



# Full wwPDB X-ray Structure Validation Report ⓘ

Dec 15, 2021 – 06:02 PM EST

PDB ID : 7T49  
Title : Structure of SARS-CoV-2 3CL protease in complex with inhibitor 10c  
Authors : Lovell, S.; Liu, L.; Battaile, K.P.; Chamandi, S.D.; Kim, Y.; Groutas, W.C.;  
Chang, K.O.  
Deposited on : 2021-12-09  
Resolution : 1.75 Å(reported)

This is a Full wwPDB X-ray Structure Validation Report for a publicly released PDB entry.

We welcome your comments at [validation@mail.wwpdb.org](mailto:validation@mail.wwpdb.org)

A user guide is available at

<https://www.wwpdb.org/validation/2017/XrayValidationReportHelp>

with specific help available everywhere you see the ⓘ symbol.

---

The following versions of software and data (see [references ⓘ](#)) were used in the production of this report:

MolProbity : 4.02b-467  
Mogul : 1.8.5 (274361), CSD as541be (2020)  
Xtriage (Phenix) : 1.13  
EDS : 2.24  
buster-report : 1.1.7 (2018)  
Percentile statistics : 20191225.v01 (using entries in the PDB archive December 25th 2019)  
Refmac : 5.8.0158  
CCP4 : 7.0.044 (Gargrove)  
Ideal geometry (proteins) : Engh & Huber (2001)  
Ideal geometry (DNA, RNA) : Parkinson et al. (1996)  
Validation Pipeline (wwPDB-VP) : 2.24

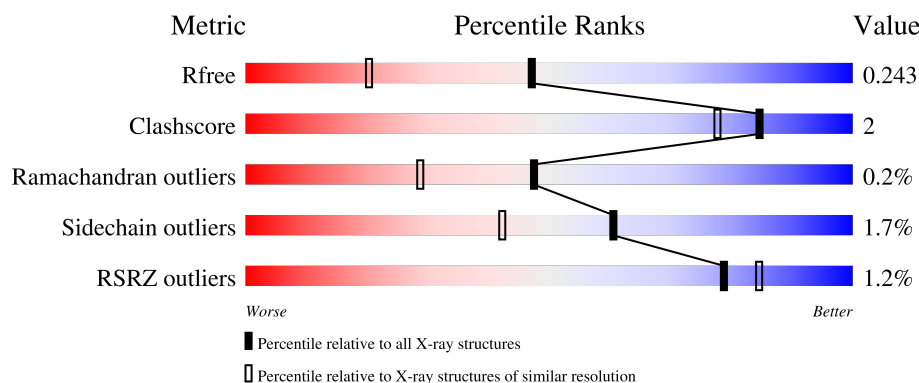
# 1 Overall quality at a glance

The following experimental techniques were used to determine the structure:

*X-RAY DIFFRACTION*

The reported resolution of this entry is 1.75 Å.

Percentile scores (ranging between 0-100) for global validation metrics of the entry are shown in the following graphic. The table shows the number of entries on which the scores are based.



Metric	Whole archive (#Entries)	Similar resolution (#Entries, resolution range(Å))
$R_{free}$	130704	2340 (1.76-1.76)
Clashscore	141614	2466 (1.76-1.76)
Ramachandran outliers	138981	2437 (1.76-1.76)
Sidechain outliers	138945	2437 (1.76-1.76)
RSRZ outliers	127900	2298 (1.76-1.76)

The table below summarises the geometric issues observed across the polymeric chains and their fit to the electron density. The red, orange, yellow and green segments of the lower bar indicate the fraction of residues that contain outliers for  $\geq 3$ , 2, 1 and 0 types of geometric quality criteria respectively. A grey segment represents the fraction of residues that are not modelled. The numeric value for each fraction is indicated below the corresponding segment, with a dot representing fractions  $\leq 5\%$ . The upper red bar (where present) indicates the fraction of residues that have poor fit to the electron density. The numeric value is given above the bar.

Mol	Chain	Length	Quality of chain
1	A	309	<div> <div style="width: 100%; height: 10px; background: linear-gradient(to right, red, orange, yellow, green, grey);"></div> <div style="display: flex; justify-content: space-between; margin-top: 2px;"> <span>%</span> <span>90%</span> <span>6%</span> <span>.</span> </div> </div>
1	B	309	<div> <div style="width: 100%; height: 10px; background: linear-gradient(to right, red, orange, yellow, green, grey);"></div> <div style="display: flex; justify-content: space-between; margin-top: 2px;"> <span>%</span> <span>91%</span> <span>6%</span> <span>.</span> </div> </div>

## 2 Entry composition

There are 4 unique types of molecules in this entry. The entry contains 4845 atoms, of which 0 are hydrogens and 0 are deuteriums.

In the tables below, the ZeroOcc column contains the number of atoms modelled with zero occupancy, the AltConf column contains the number of residues with at least one atom in alternate conformation and the Trace column contains the number of residues modelled with at most 2 atoms.

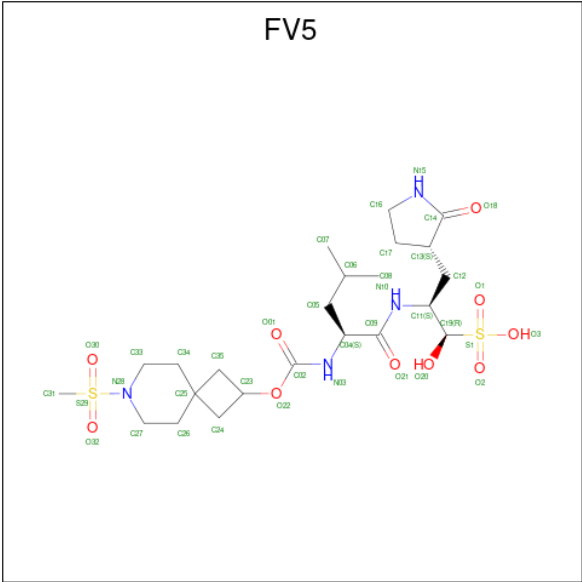
- Molecule 1 is a protein called 3C-like proteinase.

Mol	Chain	Residues	Atoms					ZeroOcc	AltConf	Trace
1	A	298	Total	C	N	O	S	0	1	0
			2230	1417	373	419	21			
1	B	300	Total	C	N	O	S	0	0	0
			2245	1425	372	426	22			

There are 8 discrepancies between the modelled and reference sequences:

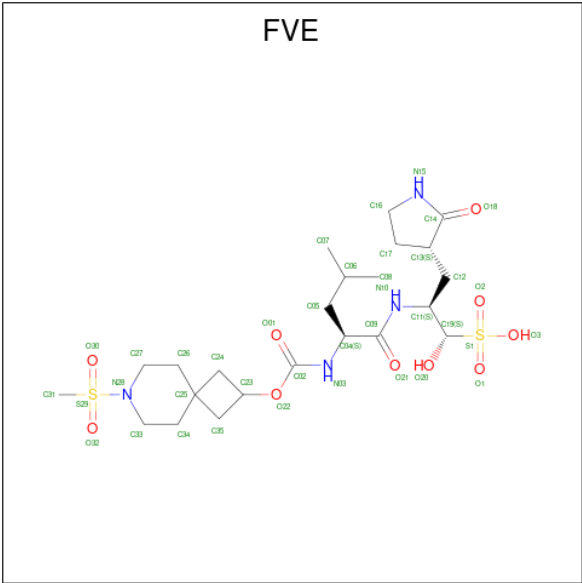
Chain	Residue	Modelled	Actual	Comment	Reference
A	-3	SER	-	expression tag	UNP P0DTD1
A	-2	ASN	-	expression tag	UNP P0DTD1
A	-1	ILE	-	expression tag	UNP P0DTD1
A	0	GLY	-	expression tag	UNP P0DTD1
B	-3	SER	-	expression tag	UNP P0DTD1
B	-2	ASN	-	expression tag	UNP P0DTD1
B	-1	ILE	-	expression tag	UNP P0DTD1
B	0	GLY	-	expression tag	UNP P0DTD1

- Molecule 2 is (1R,2S)-1-hydroxy-2-([N-([7-(methanesulfonyl)-7-azaspiro[3.5]nonan-2-yl]oxy)carbonyl]-L-leucyl]amino)-3-[(3S)-2-oxopyrrolidin-3-yl]propane-1-sulfonic acid (three-letter code: FV5) (formula: C<sub>23</sub>H<sub>40</sub>N<sub>4</sub>O<sub>10</sub>S<sub>2</sub>) (labeled as "Ligand of Interest" by depositor).



Mol	Chain	Residues	Atoms					ZeroOcc	AltConf
2	A	1	Total	C	N	O	S	0	1
			35	23	4	7	1		
2	B	1	Total	C	N	O		0	1
			26	18	3	5			

- Molecule 3 is (1S,2S)-1-hydroxy-2-([N-([7-(methanesulfonyl)-7-azaspiro[3.5]nonan-2-yl]oxy}carbonyl)-L-leucyl]amino)-3-[(3S)-2-oxopyrrolidin-3-yl]propane-1-sulfonic acid (three-letter code: FVE) (formula: C<sub>23</sub>H<sub>40</sub>N<sub>4</sub>O<sub>10</sub>S<sub>2</sub>) (labeled as "Ligand of Interest" by depositor).



Mol	Chain	Residues	Atoms					ZeroOcc	AltConf
3	A	1	Total	C	N	O	S	0	1
			35	23	4	7	1		

Continued on next page...

*Continued from previous page...*

Mol	Chain	Residues	Atoms				ZeroOcc	AltConf
3	B	1	Total	C	N	O	0	1
			26	18	3	5		

- Molecule 4 is water.

Mol	Chain	Residues	Atoms		ZeroOcc	AltConf
4	A	108	Total	O	0	0
			108	108		
4	B	140	Total	O	0	0
			140	140		

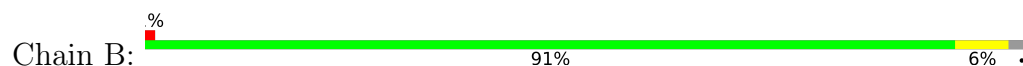
### 3 Residue-property plots [i](#)

These plots are drawn for all protein, RNA, DNA and oligosaccharide chains in the entry. The first graphic for a chain summarises the proportions of the various outlier classes displayed in the second graphic. The second graphic shows the sequence view annotated by issues in geometry and electron density. Residues are color-coded according to the number of geometric quality criteria for which they contain at least one outlier: green = 0, yellow = 1, orange = 2 and red = 3 or more. A red dot above a residue indicates a poor fit to the electron density ( $RSRZ > 2$ ). Stretches of 2 or more consecutive residues without any outlier are shown as a green connector. Residues present in the sample, but not in the model, are shown in grey.

- Molecule 1: 3C-like proteinase



- Molecule 1: 3C-like proteinase



## 4 Data and refinement statistics

Property	Value	Source
Space group	P 1 21 1	Depositor
Cell constants a, b, c, $\alpha$ , $\beta$ , $\gamma$	55.31Å 98.33Å 58.80Å 90.00° 108.15° 90.00°	Depositor
Resolution (Å)	33.44 – 1.75 49.16 – 1.75	Depositor EDS
% Data completeness (in resolution range)	98.7 (33.44-1.75) 98.8 (49.16-1.75)	Depositor EDS
$R_{merge}$	0.06	Depositor
$R_{sym}$	(Not available)	Depositor
$\langle I/\sigma(I) \rangle$ <sup>1</sup>	2.13 (at 1.75Å)	Xtriage
Refinement program	PHENIX 1.20RC2_4402	Depositor
R, $R_{free}$	0.190 , 0.241 0.195 , 0.243	Depositor DCC
$R_{free}$ test set	2788 reflections (4.69%)	wwPDB-VP
Wilson B-factor (Å <sup>2</sup> )	27.2	Xtriage
Anisotropy	0.257	Xtriage
Bulk solvent $k_{sol}$ (e/Å <sup>3</sup> ), $B_{sol}$ (Å <sup>2</sup> )	0.34 , 51.0	EDS
L-test for twinning <sup>2</sup>	$\langle  L  \rangle = 0.50$ , $\langle L^2 \rangle = 0.33$	Xtriage
Estimated twinning fraction	No twinning to report.	Xtriage
$F_o, F_c$ correlation	0.96	EDS
Total number of atoms	4845	wwPDB-VP
Average B, all atoms (Å <sup>2</sup> )	37.0	wwPDB-VP

Xtriage's analysis on translational NCS is as follows: *The largest off-origin peak in the Patterson function is 5.98% of the height of the origin peak. No significant pseudotranslation is detected.*

<sup>1</sup>Intensities estimated from amplitudes.

<sup>2</sup>Theoretical values of  $\langle |L| \rangle$ ,  $\langle L^2 \rangle$  for acentric reflections are 0.5, 0.333 respectively for untwinned datasets, and 0.375, 0.2 for perfectly twinned datasets.

## 5 Model quality

### 5.1 Standard geometry

Bond lengths and bond angles in the following residue types are not validated in this section: FVE, FV5

The Z score for a bond length (or angle) is the number of standard deviations the observed value is removed from the expected value. A bond length (or angle) with  $|Z| > 5$  is considered an outlier worth inspection. RMSZ is the root-mean-square of all Z scores of the bond lengths (or angles).

Mol	Chain	Bond lengths		Bond angles	
		RMSZ	$\# Z  > 5$	RMSZ	$\# Z  > 5$
1	A	0.50	0/2282	0.67	0/3114
1	B	0.52	0/2294	0.67	0/3128
All	All	0.51	0/4576	0.67	0/6242

There are no bond length outliers.

There are no bond angle outliers.

There are no chirality outliers.

There are no planarity outliers.

### 5.2 Too-close contacts

In the following table, the Non-H and H(model) columns list the number of non-hydrogen atoms and hydrogen atoms in the chain respectively. The H(added) column lists the number of hydrogen atoms added and optimized by MolProbity. The Clashes column lists the number of clashes within the asymmetric unit, whereas Symm-Clashes lists symmetry-related clashes.

Mol	Chain	Non-H	H(model)	H(added)	Clashes	Symm-Clashes
1	A	2230	0	2122	12	0
1	B	2245	0	2137	10	0
2	A	35	0	0	0	0
2	B	26	0	0	0	0
3	A	35	0	0	0	0
3	B	26	0	0	0	0
4	A	108	0	0	0	0
4	B	140	0	0	3	0
All	All	4845	0	4259	20	0

The all-atom clashscore is defined as the number of clashes found per 1000 atoms (including hydrogen atoms). The all-atom clashscore for this structure is 2.

All (20) close contacts within the same asymmetric unit are listed below, sorted by their clash magnitude.

Atom-1	Atom-2	Interatomic distance (Å)	Clash overlap (Å)
1:B:22:CYS:SG	1:B:61:LYS:NZ	2.50	0.85
1:A:3:PHE:CZ	1:A:296:VAL:HG22	2.30	0.67
1:B:109:GLY:HA2	1:B:200:ILE:HD13	1.78	0.65
1:A:86[A]:VAL:HG13	1:A:179:GLY:HA2	1.78	0.63
1:B:115:LEU:HD11	1:B:122:PRO:HB3	1.84	0.60
1:B:48:ASP:CB	4:B:585:HOH:O	2.55	0.53
1:A:3:PHE:HZ	1:A:296:VAL:HG22	1.74	0.51
1:A:127:GLN:O	1:B:4:ARG:NH1	2.46	0.48
1:A:106:ILE:HG23	1:A:160:CYS:HB2	1.96	0.48
1:B:3:PHE:N	4:B:506:HOH:O	2.48	0.46
1:A:86[B]:VAL:HG23	1:A:179:GLY:HA2	1.98	0.45
1:B:129:ALA:O	4:B:501:HOH:O	2.20	0.45
1:B:86:VAL:HG13	1:B:179:GLY:HA2	2.00	0.44
1:A:188:ARG:HG3	1:A:190:THR:HG23	2.00	0.44
1:A:126:TYR:HD2	1:B:6:MET:HG3	1.82	0.43
1:A:113:SER:O	1:A:149:GLY:HA2	2.18	0.43
1:A:188:ARG:CG	1:A:190:THR:HG23	2.48	0.43
1:A:58:LEU:HD22	1:A:82:MET:HB2	2.01	0.42
1:A:297:VAL:HG23	1:A:298:ARG:N	2.35	0.42
1:B:113:SER:O	1:B:149:GLY:HA2	2.20	0.42

There are no symmetry-related clashes.

## 5.3 Torsion angles ⓘ

### 5.3.1 Protein backbone ⓘ

In the following table, the Percentiles column shows the percent Ramachandran outliers of the chain as a percentile score with respect to all X-ray entries followed by that with respect to entries of similar resolution.

The Analysed column shows the number of residues for which the backbone conformation was analysed, and the total number of residues.

Mol	Chain	Analysed	Favoured	Allowed	Outliers	Percentiles	
1	A	297/309 (96%)	288 (97%)	9 (3%)	0	100	100
1	B	298/309 (96%)	291 (98%)	6 (2%)	1 (0%)	41	22
All	All	595/618 (96%)	579 (97%)	15 (2%)	1 (0%)	47	29

All (1) Ramachandran outliers are listed below:

Mol	Chain	Res	Type
1	B	301	SER

### 5.3.2 Protein sidechains ⓘ

In the following table, the Percentiles column shows the percent sidechain outliers of the chain as a percentile score with respect to all X-ray entries followed by that with respect to entries of similar resolution.

The Analysed column shows the number of residues for which the sidechain conformation was analysed, and the total number of residues.

Mol	Chain	Analysed	Rotameric	Outliers	Percentiles	
1	A	236/265 (89%)	231 (98%)	5 (2%)	53	31
1	B	239/265 (90%)	236 (99%)	3 (1%)	69	54
All	All	475/530 (90%)	467 (98%)	8 (2%)	60	42

All (8) residues with a non-rotameric sidechain are listed below:

Mol	Chain	Res	Type
1	A	27	LEU
1	A	46	SER
1	A	90	LYS
1	A	188	ARG
1	A	217	ARG
1	B	27	LEU
1	B	90	LYS
1	B	165	MET

Sometimes sidechains can be flipped to improve hydrogen bonding and reduce clashes. There are no such sidechains identified.

### 5.3.3 RNA ⓘ

There are no RNA molecules in this entry.

## 5.4 Non-standard residues in protein, DNA, RNA chains ⓘ

There are no non-standard protein/DNA/RNA residues in this entry.

## 5.5 Carbohydrates [i](#)

There are no monosaccharides in this entry.

## 5.6 Ligand geometry [i](#)

4 ligands are modelled in this entry.

In the following table, the Counts columns list the number of bonds (or angles) for which Mogul statistics could be retrieved, the number of bonds (or angles) that are observed in the model and the number of bonds (or angles) that are defined in the Chemical Component Dictionary. The Link column lists molecule types, if any, to which the group is linked. The Z score for a bond length (or angle) is the number of standard deviations the observed value is removed from the expected value. A bond length (or angle) with  $|Z| > 2$  is considered an outlier worth inspection. RMSZ is the root-mean-square of all Z scores of the bond lengths (or angles).

Mol	Type	Chain	Res	Link	Bond lengths			Bond angles		
					Counts	RMSZ	# Z  > 2	Counts	RMSZ	# Z  > 2
2	FV5	A	401[A]	1	37,37,41	1.98	9 (24%)	41,54,62	2.41	7 (17%)
3	FVE	B	402[B]	1	27,27,41	2.32	8 (29%)	33,36,62	1.87	8 (24%)
2	FV5	B	401[A]	1	27,27,41	2.37	10 (37%)	33,36,62	1.83	5 (15%)
3	FVE	A	402[B]	1	37,37,41	1.86	8 (21%)	41,54,62	2.30	8 (19%)

In the following table, the Chirals column lists the number of chiral outliers, the number of chiral centers analysed, the number of these observed in the model and the number defined in the Chemical Component Dictionary. Similar counts are reported in the Torsion and Rings columns. '-' means no outliers of that kind were identified.

Mol	Type	Chain	Res	Link	Chirals	Torsions	Rings
2	FV5	A	401[A]	1	-	5/32/64/72	0/3/3/3
3	FVE	B	402[B]	1	-	3/26/42/72	0/2/2/3
2	FV5	B	401[A]	1	-	3/26/42/72	0/2/2/3
3	FVE	A	402[B]	1	-	5/32/64/72	0/3/3/3

All (35) bond length outliers are listed below:

Mol	Chain	Res	Type	Atoms	Z	Observed(Å)	Ideal(Å)
3	B	402[B]	FVE	C14-N15	7.65	1.41	1.33
2	B	401[A]	FV5	C14-N15	7.46	1.41	1.33
3	A	402[B]	FVE	C14-N15	6.66	1.40	1.33
2	A	401[A]	FV5	C14-N15	6.64	1.40	1.33
3	B	402[B]	FVE	C24-C23	5.17	1.58	1.53
2	A	401[A]	FV5	S29-N28	4.95	1.69	1.63

*Continued on next page...*

*Continued from previous page...*

Mol	Chain	Res	Type	Atoms	Z	Observed(Å)	Ideal(Å)
3	A	402[B]	FVE	S29-N28	4.78	1.69	1.63
2	B	401[A]	FV5	C24-C23	4.43	1.57	1.53
2	B	401[A]	FV5	O22-C02	3.97	1.42	1.35
2	A	401[A]	FV5	O22-C02	3.87	1.41	1.35
3	B	402[B]	FVE	O22-C02	3.68	1.41	1.35
2	A	401[A]	FV5	C24-C25	3.59	1.57	1.54
2	B	401[A]	FV5	C35-C23	3.31	1.56	1.53
2	B	401[A]	FV5	C09-N10	3.14	1.40	1.34
3	B	402[B]	FVE	C02-N03	3.12	1.42	1.34
3	B	402[B]	FVE	C35-C23	3.04	1.56	1.53
2	B	401[A]	FV5	C02-N03	2.99	1.42	1.34
3	A	402[B]	FVE	O22-C23	-2.89	1.39	1.46
3	B	402[B]	FVE	C09-N10	2.85	1.40	1.34
3	A	402[B]	FVE	C24-C25	2.82	1.57	1.54
2	B	401[A]	FV5	C19-C11	2.78	1.57	1.52
3	A	402[B]	FVE	C13-C14	2.78	1.55	1.52
2	A	401[A]	FV5	C04-N03	2.62	1.51	1.45
2	A	401[A]	FV5	C13-C14	2.61	1.55	1.52
3	A	402[B]	FVE	O22-C02	2.54	1.39	1.35
2	B	401[A]	FV5	C12-C11	2.35	1.59	1.53
2	A	401[A]	FV5	C02-N03	2.34	1.40	1.34
2	A	401[A]	FV5	O18-C14	-2.23	1.19	1.23
2	B	401[A]	FV5	C13-C14	2.19	1.54	1.52
3	A	402[B]	FVE	O18-C14	-2.18	1.19	1.23
2	B	401[A]	FV5	O18-C14	-2.13	1.19	1.23
3	A	402[B]	FVE	C09-N10	2.10	1.38	1.34
3	B	402[B]	FVE	O18-C14	-2.08	1.19	1.23
3	B	402[B]	FVE	C12-C11	2.04	1.58	1.53
2	A	401[A]	FV5	O22-C23	-2.02	1.41	1.46

All (28) bond angle outliers are listed below:

Mol	Chain	Res	Type	Atoms	Z	Observed(°)	Ideal(°)
2	A	401[A]	FV5	C26-C27-N28	9.49	120.85	109.14
3	A	402[B]	FVE	C26-C27-N28	9.35	120.67	109.14
2	A	401[A]	FV5	C33-N28-S29	6.32	124.08	116.30
3	A	402[B]	FVE	C33-N28-S29	6.07	123.77	116.30
3	B	402[B]	FVE	O22-C02-N03	5.28	117.17	110.32
3	B	402[B]	FVE	C25-C35-C23	5.28	93.58	88.39
2	B	401[A]	FV5	C25-C35-C23	5.19	93.49	88.39
2	B	401[A]	FV5	O22-C02-N03	5.06	116.88	110.32
2	A	401[A]	FV5	C34-C33-N28	4.77	115.01	109.14

*Continued on next page...*

*Continued from previous page...*

Mol	Chain	Res	Type	Atoms	Z	Observed(°)	Ideal(°)
2	A	401[A]	FV5	C31-S29-N28	4.62	111.35	107.36
3	A	402[B]	FVE	C34-C33-N28	4.59	114.80	109.14
3	A	402[B]	FVE	C31-S29-N28	4.15	110.95	107.36
2	B	401[A]	FV5	C25-C24-C23	4.07	92.39	88.39
2	A	401[A]	FV5	O22-C02-N03	3.95	115.45	110.32
3	B	402[B]	FVE	C25-C24-C23	3.88	92.20	88.39
3	A	402[B]	FVE	O22-C02-N03	3.49	114.85	110.32
3	B	402[B]	FVE	O22-C02-O01	-2.89	120.18	124.53
2	A	401[A]	FV5	O22-C02-O01	-2.81	120.30	124.53
2	B	401[A]	FV5	O22-C02-O01	-2.74	120.41	124.53
3	A	402[B]	FVE	O22-C02-O01	-2.61	120.60	124.53
3	B	402[B]	FVE	C12-C13-C14	-2.34	107.74	112.89
3	B	402[B]	FVE	C17-C13-C14	2.22	105.77	102.88
2	A	401[A]	FV5	C27-C26-C25	2.22	122.39	113.17
3	A	402[B]	FVE	C27-C26-C25	2.18	122.22	113.17
2	B	401[A]	FV5	C04-C09-N10	2.09	121.30	116.70
3	B	402[B]	FVE	C04-C09-N10	2.06	121.23	116.70
3	A	402[B]	FVE	C27-N28-S29	2.04	118.82	116.30
3	B	402[B]	FVE	O20-C19-C11	-2.04	106.69	111.95

There are no chirality outliers.

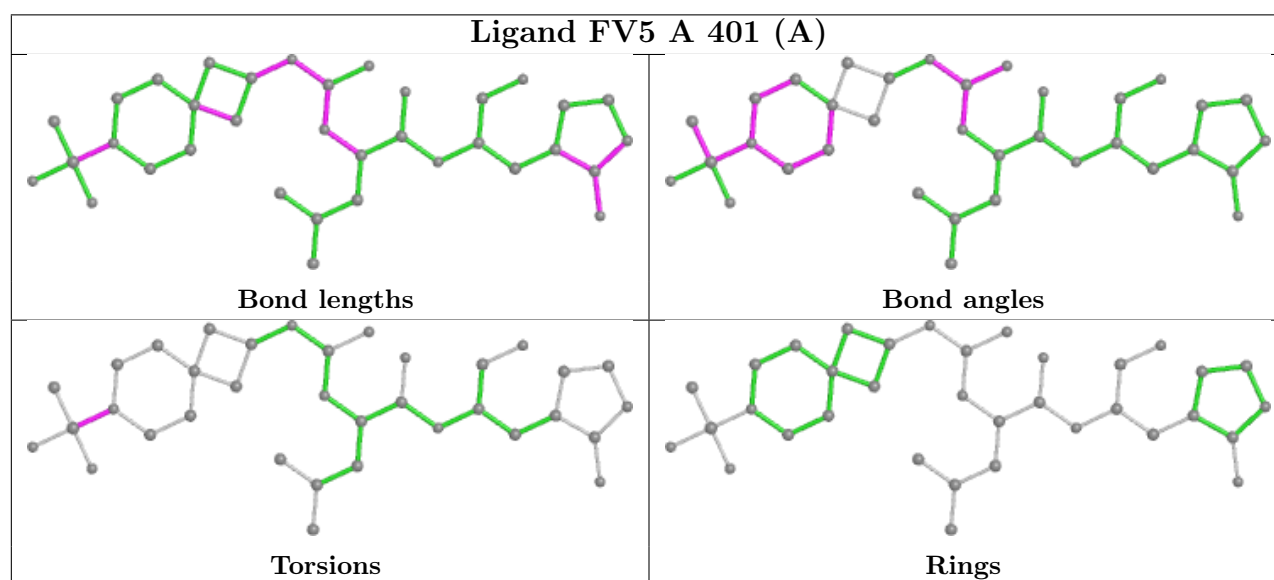
All (16) torsion outliers are listed below:

Mol	Chain	Res	Type	Atoms
2	A	401[A]	FV5	C27-N28-S29-C31
2	A	401[A]	FV5	C27-N28-S29-O32
2	A	401[A]	FV5	C33-N28-S29-C31
2	A	401[A]	FV5	C33-N28-S29-O32
3	A	402[B]	FVE	C33-N28-S29-C31
3	A	402[B]	FVE	C33-N28-S29-O32
3	A	402[B]	FVE	C27-N28-S29-C31
3	A	402[B]	FVE	C27-N28-S29-O32
3	B	402[B]	FVE	N03-C02-O22-C23
3	B	402[B]	FVE	O01-C02-O22-C23
2	B	401[A]	FV5	N03-C02-O22-C23
2	B	401[A]	FV5	O01-C02-O22-C23
2	A	401[A]	FV5	C33-N28-S29-O30
3	A	402[B]	FVE	C33-N28-S29-O30
2	B	401[A]	FV5	C24-C23-O22-C02
3	B	402[B]	FVE	C24-C23-O22-C02

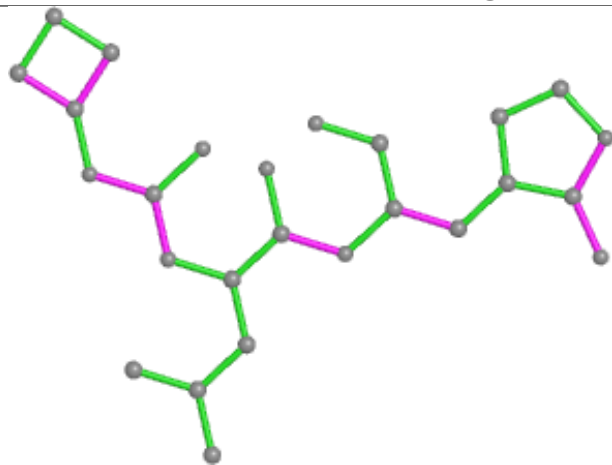
There are no ring outliers.

No monomer is involved in short contacts.

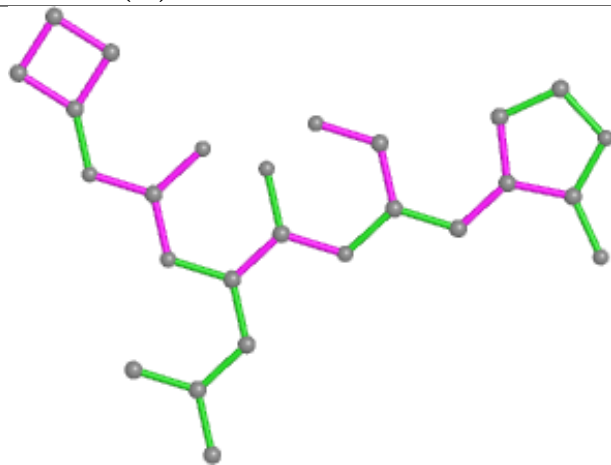
The following is a two-dimensional graphical depiction of Mogul quality analysis of bond lengths, bond angles, torsion angles, and ring geometry for all instances of the Ligand of Interest. In addition, ligands with molecular weight > 250 and outliers as shown on the validation Tables will also be included. For torsion angles, if less than 5% of the Mogul distribution of torsion angles is within 10 degrees of the torsion angle in question, then that torsion angle is considered an outlier. Any bond that is central to one or more torsion angles identified as an outlier by Mogul will be highlighted in the graph. For rings, the root-mean-square deviation (RMSD) between the ring in question and similar rings identified by Mogul is calculated over all ring torsion angles. If the average RMSD is greater than 60 degrees and the minimal RMSD between the ring in question and any Mogul-identified rings is also greater than 60 degrees, then that ring is considered an outlier. The outliers are highlighted in purple. The color gray indicates Mogul did not find sufficient equivalents in the CSD to analyse the geometry.



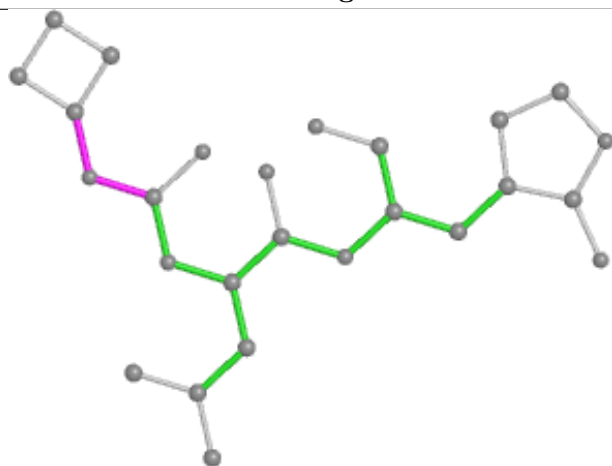
## Ligand FVE B 402 (B)



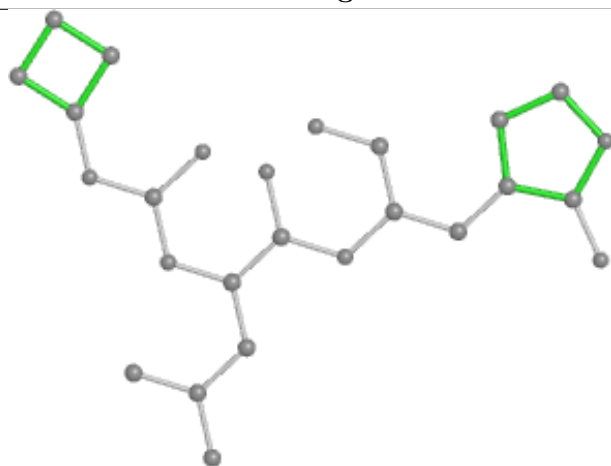
Bond lengths



Bond angles

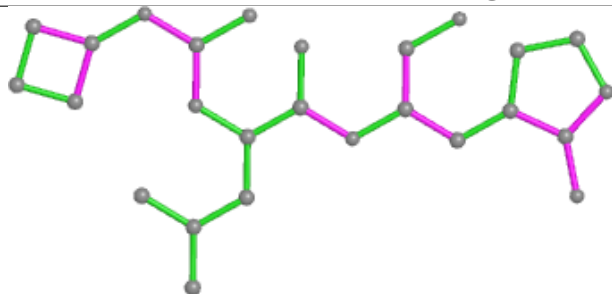


Torsions

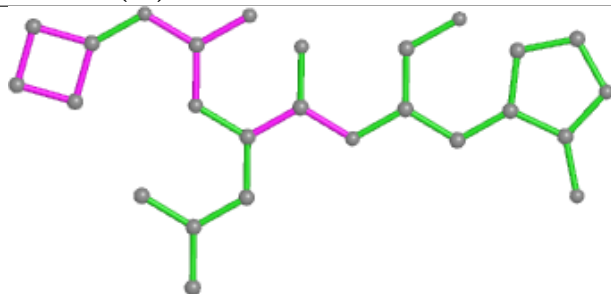


Rings

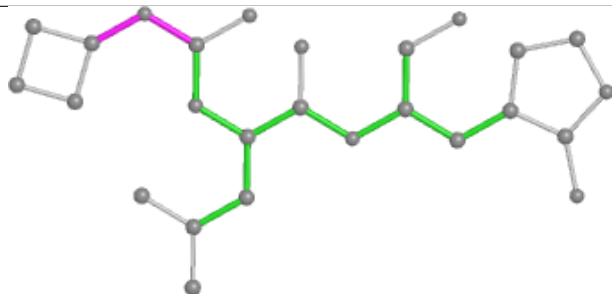
## Ligand FV5 B 401 (A)



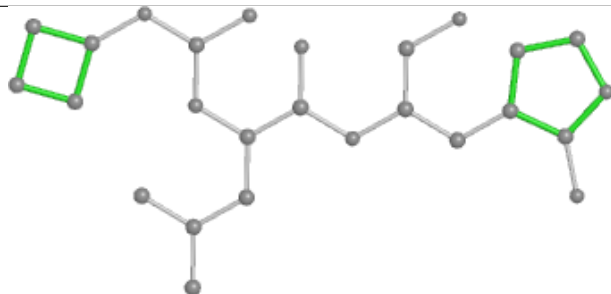
Bond lengths



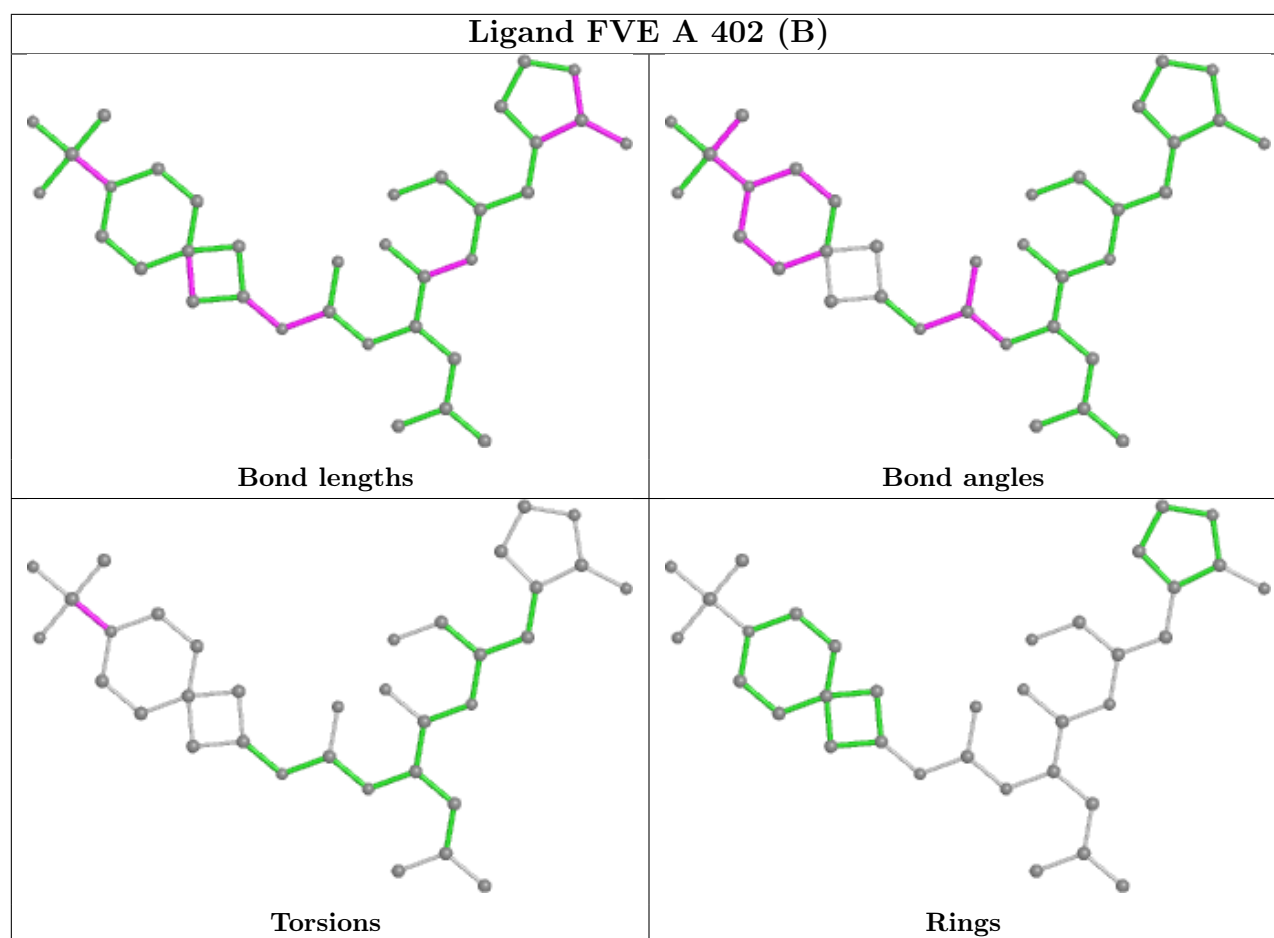
Bond angles



Torsions



Rings



## 5.7 Other polymers [i](#)

There are no such residues in this entry.

## 5.8 Polymer linkage issues [i](#)

There are no chain breaks in this entry.

## 6 Fit of model and data [i](#)

### 6.1 Protein, DNA and RNA chains [i](#)

In the following table, the column labelled ‘#RSRZ > 2’ contains the number (and percentage) of RSRZ outliers, followed by percent RSRZ outliers for the chain as percentile scores relative to all X-ray entries and entries of similar resolution. The OWAB column contains the minimum, median, 95<sup>th</sup> percentile and maximum values of the occupancy-weighted average B-factor per residue. The column labelled ‘Q < 0.9’ lists the number of (and percentage) of residues with an average occupancy less than 0.9.

Mol	Chain	Analysed	<RSRZ>	#RSRZ>2	OWAB(Å <sup>2</sup> )	Q<0.9
1	A	298/309 (96%)	-0.02	4 (1%) 77 83	23, 38, 61, 76	0
1	B	300/309 (97%)	-0.10	3 (1%) 82 87	23, 33, 55, 73	0
All	All	598/618 (96%)	-0.06	7 (1%) 79 84	23, 35, 59, 76	0

All (7) RSRZ outliers are listed below:

Mol	Chain	Res	Type	RSRZ
1	A	300	CYS	2.8
1	B	301	SER	2.7
1	A	297	VAL	2.5
1	A	3	PHE	2.4
1	A	154	TYR	2.2
1	B	191	ALA	2.0
1	B	170	GLY	2.0

### 6.2 Non-standard residues in protein, DNA, RNA chains [i](#)

There are no non-standard protein/DNA/RNA residues in this entry.

### 6.3 Carbohydrates [i](#)

There are no monosaccharides in this entry.

### 6.4 Ligands [i](#)

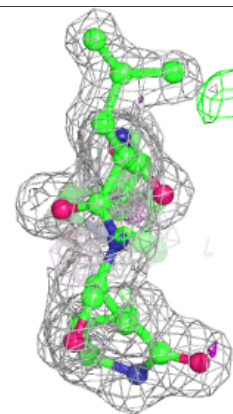
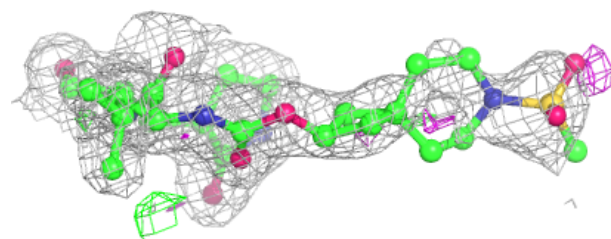
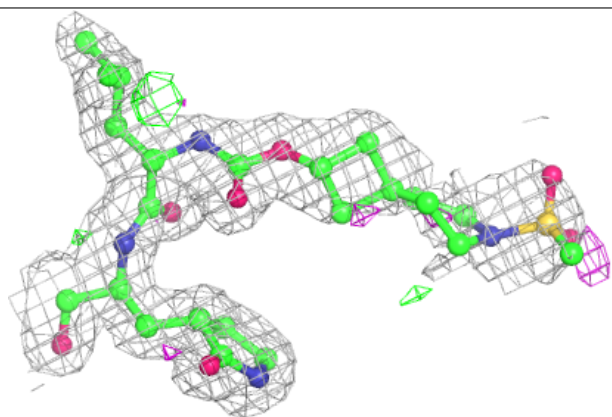
In the following table, the Atoms column lists the number of modelled atoms in the group and the number defined in the chemical component dictionary. The B-factors column lists the minimum, median, 95<sup>th</sup> percentile and maximum values of B factors of atoms in the group. The column labelled ‘Q < 0.9’ lists the number of atoms with occupancy less than 0.9.

Mol	Type	Chain	Res	Atoms	RSCC	RSR	B-factors( $\text{\AA}^2$ )	Q<0.9
3	FVE	A	402[B]	35/39	0.90	0.12	21,32,89,92	35
3	FVE	B	402[B]	26/39	0.90	0.09	24,35,43,48	26
2	FV5	A	401[A]	35/39	0.91	0.12	25,33,89,92	35
2	FV5	B	401[A]	26/39	0.91	0.10	25,35,42,47	26

The following is a graphical depiction of the model fit to experimental electron density of all instances of the Ligand of Interest. In addition, ligands with molecular weight > 250 and outliers as shown on the geometry validation Tables will also be included. Each fit is shown from different orientation to approximate a three-dimensional view.

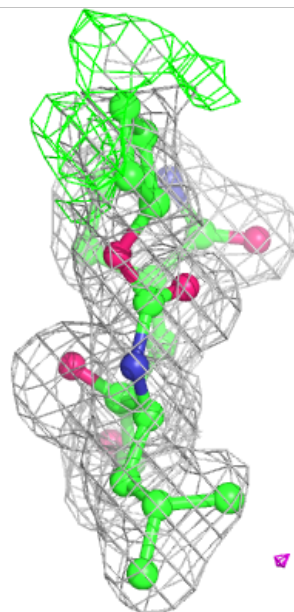
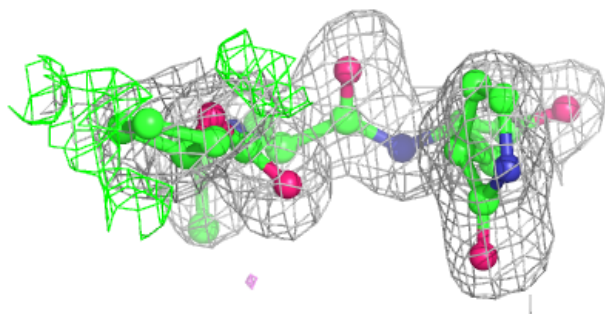
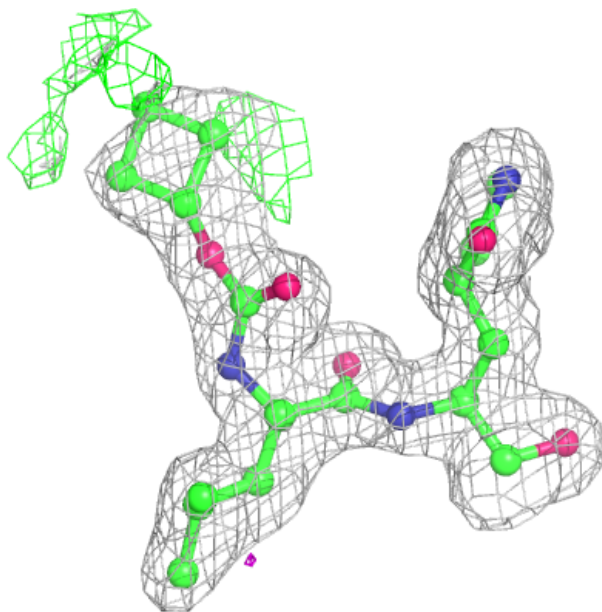
**Electron density around FVE A 402 (B):**

2mF<sub>o</sub>-DF<sub>c</sub> (at 0.7 rmsd) in gray  
mF<sub>o</sub>-DF<sub>c</sub> (at 3 rmsd) in purple (negative)  
and green (positive)



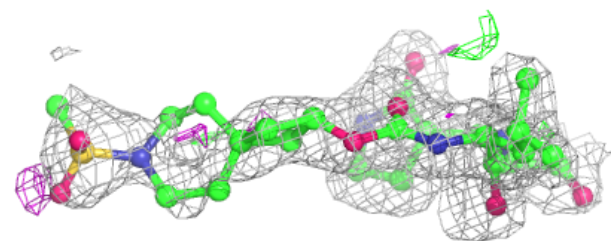
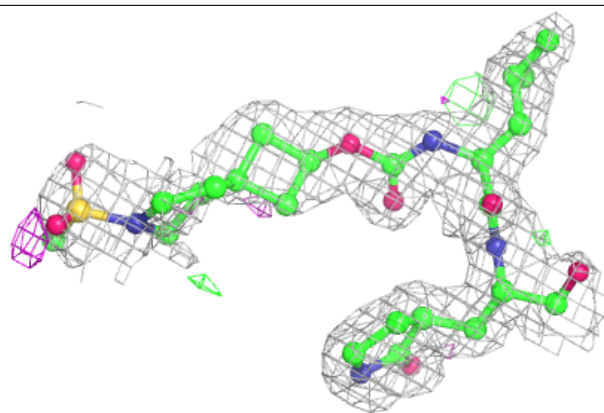
**Electron density around FVE B 402 (B):**

$2mF_o-DF_c$  (at 0.7 rmsd) in gray  
 $mF_o-DF_c$  (at 3 rmsd) in purple (negative)  
and green (positive)



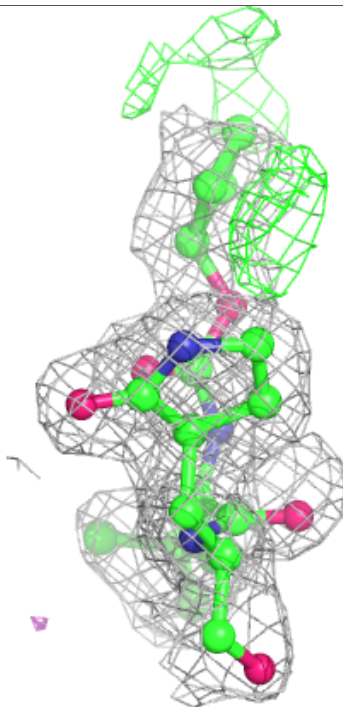
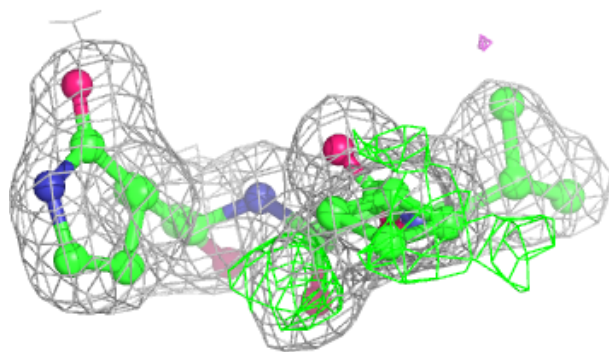
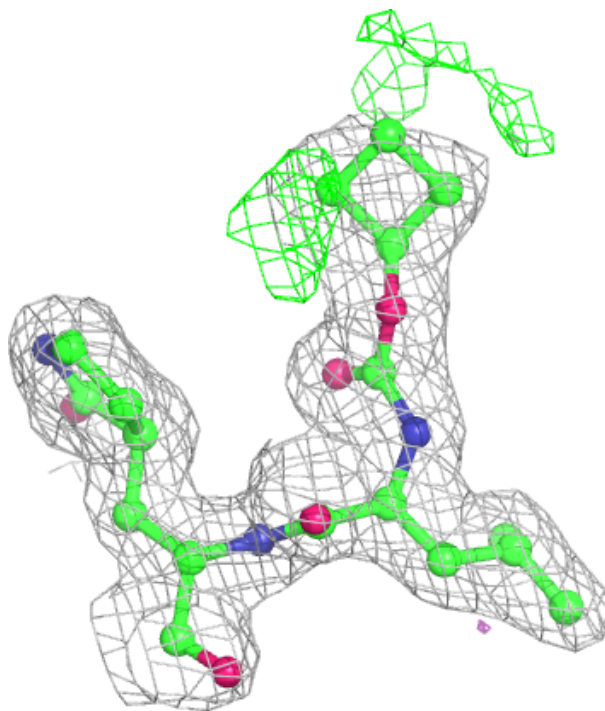
**Electron density around FV5 A 401 (A):**

$2mF_o-DF_c$  (at 0.7 rmsd) in gray  
 $mF_o-DF_c$  (at 3 rmsd) in purple (negative)  
and green (positive)



**Electron density around FV5 B 401 (A):**

$2mF_o-DF_c$  (at 0.7 rmsd) in gray  
 $mF_o-DF_c$  (at 3 rmsd) in purple (negative)  
and green (positive)



## 6.5 Other polymers [i](#)

There are no such residues in this entry.