



# wwPDB X-ray Structure Validation Summary Report ⓘ

Dec 10, 2022 – 07:42 PM EST

PDB ID : 1T5A  
Title : Human Pyruvate Kinase M2  
Authors : Dombrauckas, J.D.; Santarsiero, B.D.; Mesecar, A.D.  
Deposited on : 2004-05-03  
Resolution : 2.80 Å(reported)

This is a wwPDB X-ray Structure Validation Summary Report for a publicly released PDB entry.

We welcome your comments at [validation@mail.wwpdb.org](mailto:validation@mail.wwpdb.org)

A user guide is available at

<https://www.wwpdb.org/validation/2017/XrayValidationReportHelp>

with specific help available everywhere you see the ⓘ symbol.

The types of validation reports are described at

<http://www.wwpdb.org/validation/2017/FAQs#types>.

---

The following versions of software and data (see [references ⓘ](#)) were used in the production of this report:

MolProbity	:	4.02b-467
Mogul	:	1.8.5 (274361), CSD as541be (2020)
Xtriage (Phenix)	:	1.13
EDS	:	2.31.2
buster-report	:	1.1.7 (2018)
Percentile statistics	:	20191225.v01 (using entries in the PDB archive December 25th 2019)
Refmac	:	5.8.0158
CCP4	:	7.0.044 (Gargrove)
Ideal geometry (proteins)	:	Engh & Huber (2001)
Ideal geometry (DNA, RNA)	:	Parkinson et al. (1996)
Validation Pipeline (wwPDB-VP)	:	2.31.2

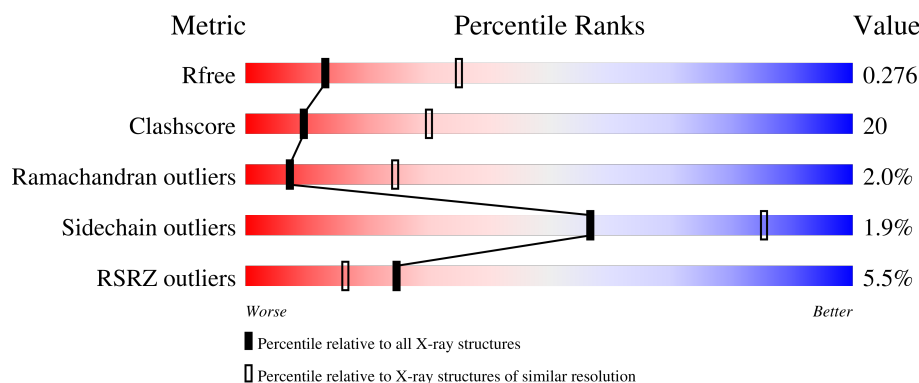
# 1 Overall quality at a glance

The following experimental techniques were used to determine the structure:

*X-RAY DIFFRACTION*

The reported resolution of this entry is 2.80 Å.

Percentile scores (ranging between 0-100) for global validation metrics of the entry are shown in the following graphic. The table shows the number of entries on which the scores are based.



Metric	Whole archive (#Entries)	Similar resolution (#Entries, resolution range(Å))
$R_{free}$	130704	3140 (2.80-2.80)
Clashscore	141614	3569 (2.80-2.80)
Ramachandran outliers	138981	3498 (2.80-2.80)
Sidechain outliers	138945	3500 (2.80-2.80)
RSRZ outliers	127900	3078 (2.80-2.80)

The table below summarises the geometric issues observed across the polymeric chains and their fit to the electron density. The red, orange, yellow and green segments of the lower bar indicate the fraction of residues that contain outliers for  $\geq 3$ , 2, 1 and 0 types of geometric quality criteria respectively. A grey segment represents the fraction of residues that are not modelled. The numeric value for each fraction is indicated below the corresponding segment, with a dot representing fractions  $\leq 5\%$ . The upper red bar (where present) indicates the fraction of residues that have poor fit to the electron density. The numeric value is given above the bar.

Mol	Chain	Length	Quality of chain
1	A	567	<div> <div>7%</div> <div>60%</div> <div>29%</div> <div>• 8%</div> </div>
1	B	567	<div> <div>6%</div> <div>62%</div> <div>27%</div> <div>• 8%</div> </div>
1	C	567	<div> <div>2%</div> <div>60%</div> <div>29%</div> <div>• 8%</div> </div>
1	D	567	<div> <div>6%</div> <div>61%</div> <div>28%</div> <div>• 8%</div> </div>

The following table lists non-polymeric compounds, carbohydrate monomers and non-standard

residues in protein, DNA, RNA chains that are outliers for geometric or electron-density-fit criteria:

Mol	Type	Chain	Res	Chirality	Geometry	Clashes	Electron density
3	OXL	C	533	-	-	X	-
7	GOL	C	705	-	-	-	X
7	GOL	C	707	-	-	X	X

## 2 Entry composition

There are 8 unique types of molecules in this entry. The entry contains 16271 atoms, of which 0 are hydrogens and 0 are deuteriums.

In the tables below, the ZeroOcc column contains the number of atoms modelled with zero occupancy, the AltConf column contains the number of residues with at least one atom in alternate conformation and the Trace column contains the number of residues modelled with at most 2 atoms.

- Molecule 1 is a protein called Pyruvate kinase, M2 isozyme.

Mol	Chain	Residues	Atoms					ZeroOcc	AltConf	Trace
1	A	519	Total	C	N	O	S	0	0	0
			3971	2496	704	746	25			
1	B	519	Total	C	N	O	S	0	0	0
			3971	2496	704	746	25			
1	C	519	Total	C	N	O	S	0	0	0
			3971	2496	704	746	25			
1	D	519	Total	C	N	O	S	0	0	0
			3971	2496	704	746	25			

There are 148 discrepancies between the modelled and reference sequences:

Chain	Residue	Modelled	Actual	Comment	Reference
A	-35	MET	-	cloning artifact	UNP P14618
A	-34	ARG	-	cloning artifact	UNP P14618
A	-33	GLY	-	cloning artifact	UNP P14618
A	-32	SER	-	cloning artifact	UNP P14618
A	-31	HIS	-	cloning artifact	UNP P14618
A	-30	HIS	-	cloning artifact	UNP P14618
A	-29	HIS	-	cloning artifact	UNP P14618
A	-28	HIS	-	cloning artifact	UNP P14618
A	-27	HIS	-	cloning artifact	UNP P14618
A	-26	HIS	-	cloning artifact	UNP P14618
A	-25	GLY	-	cloning artifact	UNP P14618
A	-24	MET	-	cloning artifact	UNP P14618
A	-23	ALA	-	cloning artifact	UNP P14618
A	-22	SER	-	cloning artifact	UNP P14618
A	-21	MET	-	cloning artifact	UNP P14618
A	-20	THR	-	cloning artifact	UNP P14618
A	-19	GLY	-	cloning artifact	UNP P14618
A	-18	GLY	-	cloning artifact	UNP P14618
A	-17	GLN	-	cloning artifact	UNP P14618
A	-16	GLN	-	cloning artifact	UNP P14618
A	-15	MET	-	cloning artifact	UNP P14618

*Continued on next page...*

*Continued from previous page...*

Chain	Residue	Modelled	Actual	Comment	Reference
A	-14	GLY	-	cloning artifact	UNP P14618
A	-13	ARG	-	cloning artifact	UNP P14618
A	-12	ASP	-	cloning artifact	UNP P14618
A	-11	LEU	-	cloning artifact	UNP P14618
A	-10	TYR	-	cloning artifact	UNP P14618
A	-9	ASP	-	cloning artifact	UNP P14618
A	-8	ASP	-	cloning artifact	UNP P14618
A	-7	ASP	-	cloning artifact	UNP P14618
A	-6	ASP	-	cloning artifact	UNP P14618
A	-5	LYS	-	cloning artifact	UNP P14618
A	-4	ASP	-	cloning artifact	UNP P14618
A	-3	HIS	-	cloning artifact	UNP P14618
A	-2	PRO	-	cloning artifact	UNP P14618
A	-1	PHE	-	cloning artifact	UNP P14618
A	0	THR	-	cloning artifact	UNP P14618
A	1	MET	-	initiating methionine	UNP P14618
B	-35	MET	-	cloning artifact	UNP P14618
B	-34	ARG	-	cloning artifact	UNP P14618
B	-33	GLY	-	cloning artifact	UNP P14618
B	-32	SER	-	cloning artifact	UNP P14618
B	-31	HIS	-	cloning artifact	UNP P14618
B	-30	HIS	-	cloning artifact	UNP P14618
B	-29	HIS	-	cloning artifact	UNP P14618
B	-28	HIS	-	cloning artifact	UNP P14618
B	-27	HIS	-	cloning artifact	UNP P14618
B	-26	HIS	-	cloning artifact	UNP P14618
B	-25	GLY	-	cloning artifact	UNP P14618
B	-24	MET	-	cloning artifact	UNP P14618
B	-23	ALA	-	cloning artifact	UNP P14618
B	-22	SER	-	cloning artifact	UNP P14618
B	-21	MET	-	cloning artifact	UNP P14618
B	-20	THR	-	cloning artifact	UNP P14618
B	-19	GLY	-	cloning artifact	UNP P14618
B	-18	GLY	-	cloning artifact	UNP P14618
B	-17	GLN	-	cloning artifact	UNP P14618
B	-16	GLN	-	cloning artifact	UNP P14618
B	-15	MET	-	cloning artifact	UNP P14618
B	-14	GLY	-	cloning artifact	UNP P14618
B	-13	ARG	-	cloning artifact	UNP P14618
B	-12	ASP	-	cloning artifact	UNP P14618
B	-11	LEU	-	cloning artifact	UNP P14618
B	-10	TYR	-	cloning artifact	UNP P14618

*Continued on next page...*

*Continued from previous page...*

Chain	Residue	Modelled	Actual	Comment	Reference
B	-9	ASP	-	cloning artifact	UNP P14618
B	-8	ASP	-	cloning artifact	UNP P14618
B	-7	ASP	-	cloning artifact	UNP P14618
B	-6	ASP	-	cloning artifact	UNP P14618
B	-5	LYS	-	cloning artifact	UNP P14618
B	-4	ASP	-	cloning artifact	UNP P14618
B	-3	HIS	-	cloning artifact	UNP P14618
B	-2	PRO	-	cloning artifact	UNP P14618
B	-1	PHE	-	cloning artifact	UNP P14618
B	0	THR	-	cloning artifact	UNP P14618
B	1	MET	-	initiating methionine	UNP P14618
C	-35	MET	-	cloning artifact	UNP P14618
C	-34	ARG	-	cloning artifact	UNP P14618
C	-33	GLY	-	cloning artifact	UNP P14618
C	-32	SER	-	cloning artifact	UNP P14618
C	-31	HIS	-	cloning artifact	UNP P14618
C	-30	HIS	-	cloning artifact	UNP P14618
C	-29	HIS	-	cloning artifact	UNP P14618
C	-28	HIS	-	cloning artifact	UNP P14618
C	-27	HIS	-	cloning artifact	UNP P14618
C	-26	HIS	-	cloning artifact	UNP P14618
C	-25	GLY	-	cloning artifact	UNP P14618
C	-24	MET	-	cloning artifact	UNP P14618
C	-23	ALA	-	cloning artifact	UNP P14618
C	-22	SER	-	cloning artifact	UNP P14618
C	-21	MET	-	cloning artifact	UNP P14618
C	-20	THR	-	cloning artifact	UNP P14618
C	-19	GLY	-	cloning artifact	UNP P14618
C	-18	GLY	-	cloning artifact	UNP P14618
C	-17	GLN	-	cloning artifact	UNP P14618
C	-16	GLN	-	cloning artifact	UNP P14618
C	-15	MET	-	cloning artifact	UNP P14618
C	-14	GLY	-	cloning artifact	UNP P14618
C	-13	ARG	-	cloning artifact	UNP P14618
C	-12	ASP	-	cloning artifact	UNP P14618
C	-11	LEU	-	cloning artifact	UNP P14618
C	-10	TYR	-	cloning artifact	UNP P14618
C	-9	ASP	-	cloning artifact	UNP P14618
C	-8	ASP	-	cloning artifact	UNP P14618
C	-7	ASP	-	cloning artifact	UNP P14618
C	-6	ASP	-	cloning artifact	UNP P14618
C	-5	LYS	-	cloning artifact	UNP P14618

*Continued on next page...*

*Continued from previous page...*

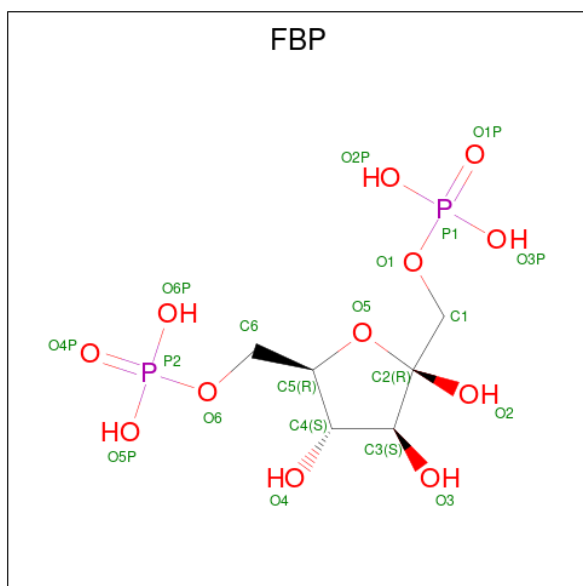
Chain	Residue	Modelled	Actual	Comment	Reference
C	-4	ASP	-	cloning artifact	UNP P14618
C	-3	HIS	-	cloning artifact	UNP P14618
C	-2	PRO	-	cloning artifact	UNP P14618
C	-1	PHE	-	cloning artifact	UNP P14618
C	0	THR	-	cloning artifact	UNP P14618
C	1	MET	-	initiating methionine	UNP P14618
D	-35	MET	-	cloning artifact	UNP P14618
D	-34	ARG	-	cloning artifact	UNP P14618
D	-33	GLY	-	cloning artifact	UNP P14618
D	-32	SER	-	cloning artifact	UNP P14618
D	-31	HIS	-	cloning artifact	UNP P14618
D	-30	HIS	-	cloning artifact	UNP P14618
D	-29	HIS	-	cloning artifact	UNP P14618
D	-28	HIS	-	cloning artifact	UNP P14618
D	-27	HIS	-	cloning artifact	UNP P14618
D	-26	HIS	-	cloning artifact	UNP P14618
D	-25	GLY	-	cloning artifact	UNP P14618
D	-24	MET	-	cloning artifact	UNP P14618
D	-23	ALA	-	cloning artifact	UNP P14618
D	-22	SER	-	cloning artifact	UNP P14618
D	-21	MET	-	cloning artifact	UNP P14618
D	-20	THR	-	cloning artifact	UNP P14618
D	-19	GLY	-	cloning artifact	UNP P14618
D	-18	GLY	-	cloning artifact	UNP P14618
D	-17	GLN	-	cloning artifact	UNP P14618
D	-16	GLN	-	cloning artifact	UNP P14618
D	-15	MET	-	cloning artifact	UNP P14618
D	-14	GLY	-	cloning artifact	UNP P14618
D	-13	ARG	-	cloning artifact	UNP P14618
D	-12	ASP	-	cloning artifact	UNP P14618
D	-11	LEU	-	cloning artifact	UNP P14618
D	-10	TYR	-	cloning artifact	UNP P14618
D	-9	ASP	-	cloning artifact	UNP P14618
D	-8	ASP	-	cloning artifact	UNP P14618
D	-7	ASP	-	cloning artifact	UNP P14618
D	-6	ASP	-	cloning artifact	UNP P14618
D	-5	LYS	-	cloning artifact	UNP P14618
D	-4	ASP	-	cloning artifact	UNP P14618
D	-3	HIS	-	cloning artifact	UNP P14618
D	-2	PRO	-	cloning artifact	UNP P14618
D	-1	PHE	-	cloning artifact	UNP P14618
D	0	THR	-	cloning artifact	UNP P14618

*Continued on next page...*

Continued from previous page...

Chain	Residue	Modelled	Actual	Comment	Reference
D	1	MET	-	initiating methionine	UNP P14618

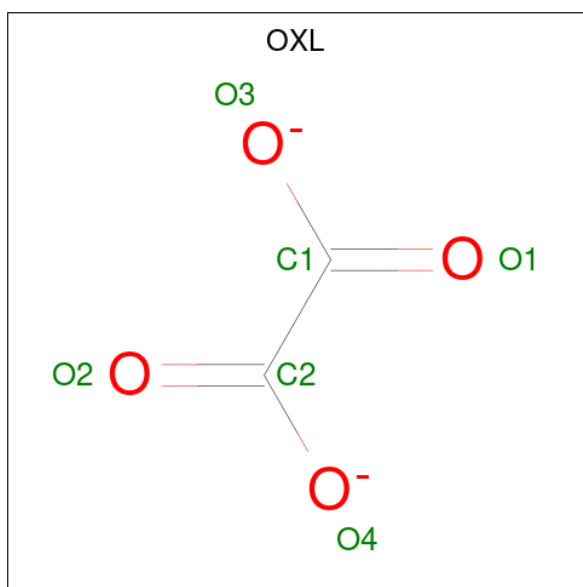
- Molecule 2 is 1,6-di-O-phosphono-beta-D-fructofuranose (three-letter code: FBP) (formula:  $C_6H_{14}O_{12}P_2$ ).



Mol	Chain	Residues	Atoms				ZeroOcc	AltConf
2	A	1	Total	C	O	P	0	0
			20	6	12	2		
2	B	1	Total	C	O	P	0	0
			20	6	12	2		
2	C	1	Total	C	O	P	0	0
			20	6	12	2		
2	D	1	Total	C	O	P	0	0
			20	6	12	2		

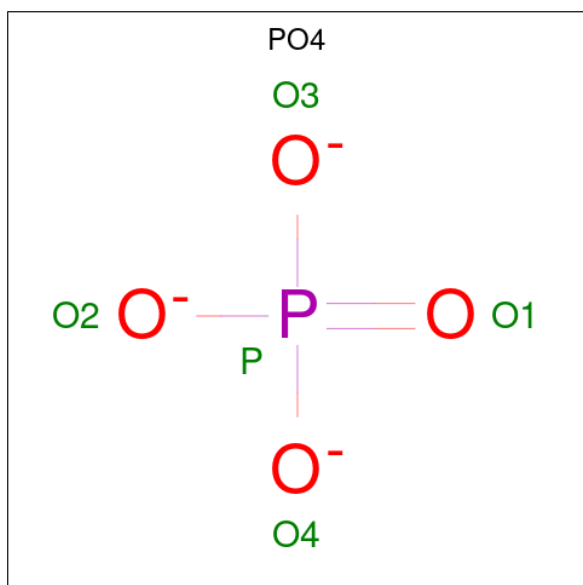
- Molecule 3 is OXALATE ION (three-letter code: OXL) (formula:  $C_2O_4$ ).





Mol	Chain	Residues	Atoms			ZeroOcc	AltConf
3	A	1	Total	C	O	0	0
			6	2	4		
3	B	1	Total	C	O	0	0
			6	2	4		
3	C	1	Total	C	O	0	0
			6	2	4		
3	D	1	Total	C	O	0	0
			6	2	4		

- Molecule 4 is PHOSPHATE ION (three-letter code: PO4) (formula:  $O_4P$ ).



Mol	Chain	Residues	Atoms	ZeroOcc	AltConf
4	A	1	Total O P 5 4 1	0	0
4	B	1	Total O P 5 4 1	0	0
4	C	1	Total O P 5 4 1	0	0
4	D	1	Total O P 5 4 1	0	0

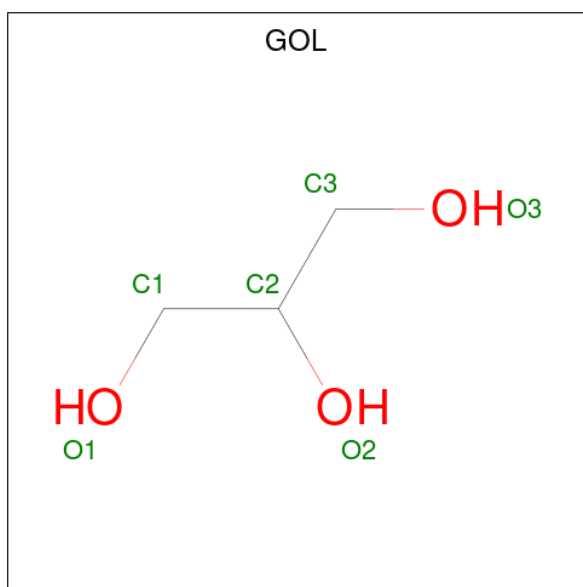
- Molecule 5 is MAGNESIUM ION (three-letter code: MG) (formula: Mg).

Mol	Chain	Residues	Atoms	ZeroOcc	AltConf
5	A	1	Total Mg 1 1	0	0
5	B	1	Total Mg 1 1	0	0
5	C	1	Total Mg 1 1	0	0
5	D	1	Total Mg 1 1	0	0

- Molecule 6 is POTASSIUM ION (three-letter code: K) (formula: K).

Mol	Chain	Residues	Atoms	ZeroOcc	AltConf
6	A	1	Total K 1 1	0	0
6	B	1	Total K 1 1	0	0
6	C	1	Total K 1 1	0	0
6	D	1	Total K 1 1	0	0

- Molecule 7 is GLYCEROL (three-letter code: GOL) (formula: C<sub>3</sub>H<sub>8</sub>O<sub>3</sub>).



Mol	Chain	Residues	Atoms			ZeroOcc	AltConf
7	A	1	Total	C	O	0	0
			6	3	3		
7	A	1	Total	C	O	0	0
			6	3	3		
7	A	1	Total	C	O	0	0
			6	3	3		
7	A	1	Total	C	O	0	0
			6	3	3		
7	A	1	Total	C	O	0	0
			6	3	3		
7	B	1	Total	C	O	0	0
			6	3	3		
7	B	1	Total	C	O	0	0
			6	3	3		
7	B	1	Total	C	O	0	0
			6	3	3		
7	B	1	Total	C	O	0	0
			6	3	3		
7	C	1	Total	C	O	0	0
			6	3	3		
7	C	1	Total	C	O	0	0
			6	3	3		
7	C	1	Total	C	O	0	0
			6	3	3		
7	C	1	Total	C	O	0	0
			6	3	3		

*Continued on next page...*

*Continued from previous page...*

Mol	Chain	Residues	Atoms	ZeroOcc	AltConf
7	C	1	Total C O 6 3 3	0	0
7	D	1	Total C O 6 3 3	0	0
7	D	1	Total C O 6 3 3	0	0
7	D	1	Total C O 6 3 3	0	0
7	D	1	Total C O 6 3 3	0	0
7	D	1	Total C O 6 3 3	0	0

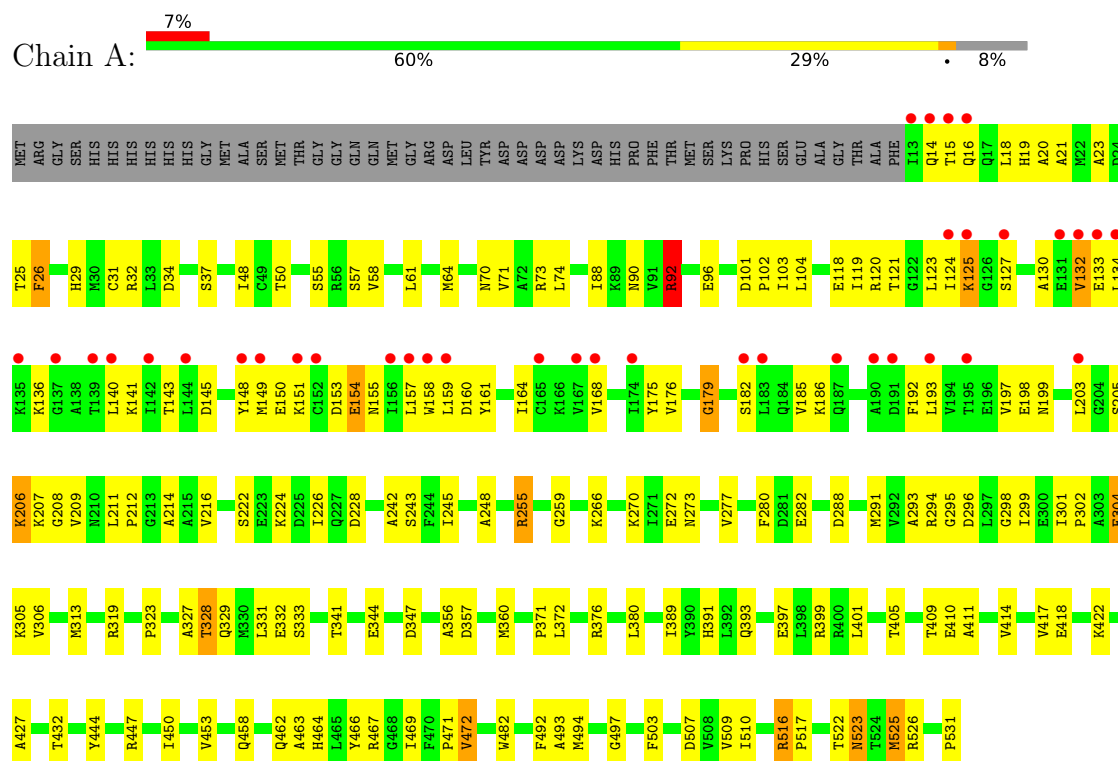
- Molecule 8 is water.

Mol	Chain	Residues	Atoms	ZeroOcc	AltConf
8	A	47	Total O 47 47	0	0
8	B	28	Total O 28 28	0	0
8	C	30	Total O 30 30	0	0
8	D	30	Total O 30 30	0	0

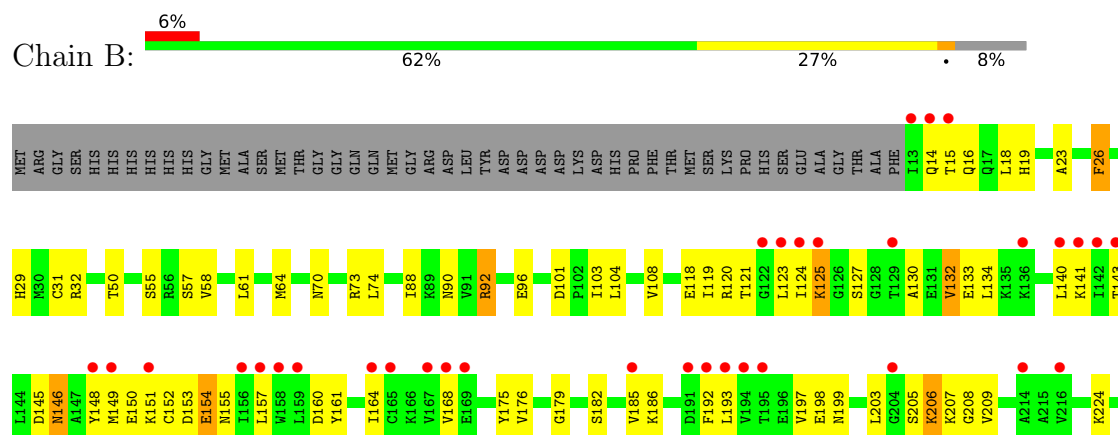
### 3 Residue-property plots

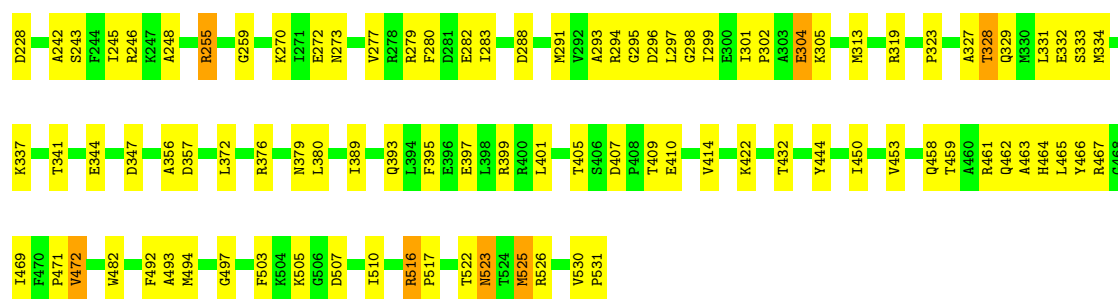
These plots are drawn for all protein, RNA, DNA and oligosaccharide chains in the entry. The first graphic for a chain summarises the proportions of the various outlier classes displayed in the second graphic. The second graphic shows the sequence view annotated by issues in geometry and electron density. Residues are color-coded according to the number of geometric quality criteria for which they contain at least one outlier: green = 0, yellow = 1, orange = 2 and red = 3 or more. A red dot above a residue indicates a poor fit to the electron density ( $RSRZ > 2$ ). Stretches of 2 or more consecutive residues without any outlier are shown as a green connector. Residues present in the sample, but not in the model, are shown in grey.

- Molecule 1: Pyruvate kinase, M2 isozyme

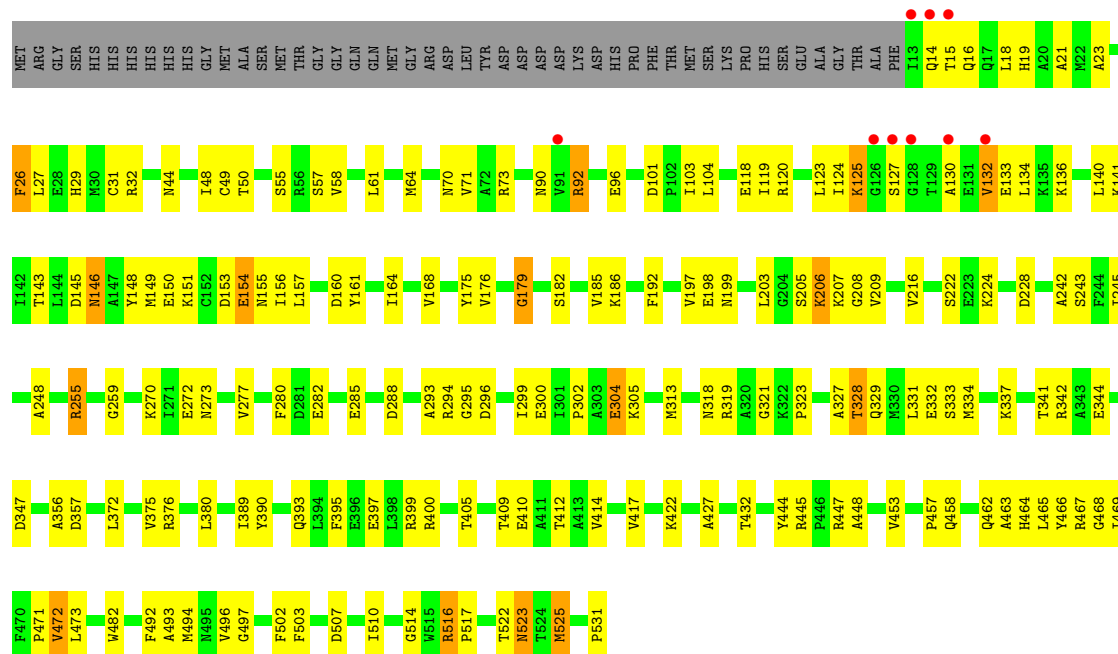


- Molecule 1: Pyruvate kinase, M2 isozyme

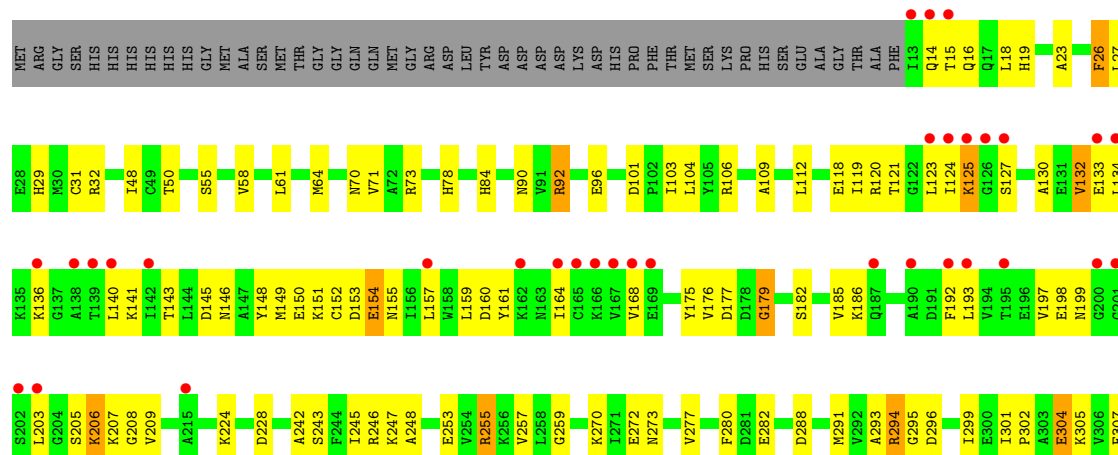


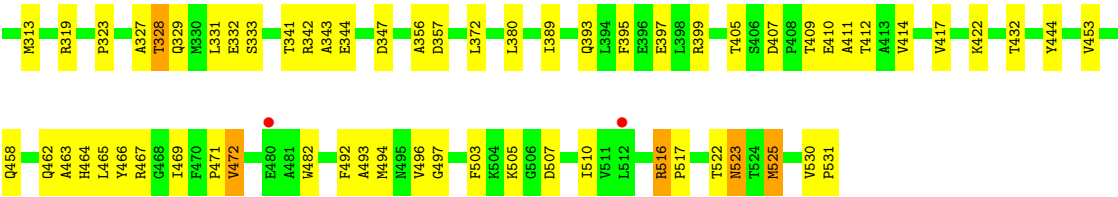


• Molecule 1: Pyruvate kinase, M2 isozyme



• Molecule 1: Pyruvate kinase, M2 isozyme





## 4 Data and refinement statistics

Property	Value	Source
Space group	P 21 21 21	Depositor
Cell constants a, b, c, $\alpha$ , $\beta$ , $\gamma$	108.21Å 145.01Å 159.26Å 90.00° 90.00° 90.00°	Depositor
Resolution (Å)	20.00 – 2.80 48.30 – 2.80	Depositor EDS
% Data completeness (in resolution range)	96.4 (20.00-2.80) 96.4 (48.30-2.80)	Depositor EDS
$R_{merge}$	0.11	Depositor
$R_{sym}$	(Not available)	Depositor
$\langle I/\sigma(I) \rangle$ <sup>1</sup>	1.25 (at 2.81Å)	Xtriage
Refinement program	CNS 1.0	Depositor
R, $R_{free}$	0.231 , 0.278 0.230 , 0.276	Depositor DCC
$R_{free}$ test set	3029 reflections (5.04%)	wwPDB-VP
Wilson B-factor (Å <sup>2</sup> )	66.9	Xtriage
Anisotropy	0.328	Xtriage
Bulk solvent $k_{sol}$ (e/Å <sup>3</sup> ), $B_{sol}$ (Å <sup>2</sup> )	0.30 , 55.0	EDS
L-test for twinning <sup>2</sup>	$\langle  L  \rangle = 0.49$ , $\langle L^2 \rangle = 0.32$	Xtriage
Estimated twinning fraction	No twinning to report.	Xtriage
$F_o, F_c$ correlation	0.93	EDS
Total number of atoms	16271	wwPDB-VP
Average B, all atoms (Å <sup>2</sup> )	67.0	wwPDB-VP

Xtriage's analysis on translational NCS is as follows: *The largest off-origin peak in the Patterson function is 3.65% of the height of the origin peak. No significant pseudotranslation is detected.*

<sup>1</sup>Intensities estimated from amplitudes.

<sup>2</sup>Theoretical values of  $\langle |L| \rangle$ ,  $\langle L^2 \rangle$  for acentric reflections are 0.5, 0.333 respectively for untwinned datasets, and 0.375, 0.2 for perfectly twinned datasets.



## 5 Model quality ⓘ

### 5.1 Standard geometry ⓘ

Bond lengths and bond angles in the following residue types are not validated in this section: K, OXL, MG, PO4, FBP, GOL

The Z score for a bond length (or angle) is the number of standard deviations the observed value is removed from the expected value. A bond length (or angle) with  $|Z| > 5$  is considered an outlier worth inspection. RMSZ is the root-mean-square of all Z scores of the bond lengths (or angles).

Mol	Chain	Bond lengths		Bond angles	
		RMSZ	# Z  >5	RMSZ	# Z  >5
1	A	0.53	0/4034	0.74	3/5448 (0.1%)
1	B	0.51	1/4034 (0.0%)	0.69	2/5448 (0.0%)
1	C	0.52	0/4034	0.69	2/5448 (0.0%)
1	D	0.50	0/4034	0.68	2/5448 (0.0%)
All	All	0.51	1/16136 (0.0%)	0.70	9/21792 (0.0%)

All (1) bond length outliers are listed below:

Mol	Chain	Res	Type	Atoms	Z	Observed(Å)	Ideal(Å)
1	B	379	ASN	CB-CG	5.22	1.63	1.51

The worst 5 of 9 bond angle outliers are listed below:

Mol	Chain	Res	Type	Atoms	Z	Observed(°)	Ideal(°)
1	A	92	ARG	NE-CZ-NH1	-14.04	113.28	120.30
1	A	92	ARG	NE-CZ-NH2	13.29	126.95	120.30
1	D	92	ARG	NE-CZ-NH1	7.58	124.09	120.30
1	A	92	ARG	CD-NE-CZ	7.46	134.04	123.60
1	B	92	ARG	NE-CZ-NH2	-6.94	116.83	120.30

There are no chirality outliers.

There are no planarity outliers.

### 5.2 Too-close contacts ⓘ

In the following table, the Non-H and H(model) columns list the number of non-hydrogen atoms and hydrogen atoms in the chain respectively. The H(added) column lists the number of hydrogen atoms added and optimized by MolProbity. The Clashes column lists the number of clashes within the asymmetric unit, whereas Symm-Clashes lists symmetry-related clashes.

Mol	Chain	Non-H	H(model)	H(added)	Clashes	Symm-Clashes
1	A	3971	0	4059	170	0
1	B	3971	0	4059	160	0
1	C	3971	0	4059	175	0
1	D	3971	0	4059	172	0
2	A	20	0	10	1	0
2	B	20	0	10	1	0
2	C	20	0	10	2	0
2	D	20	0	10	1	0
3	A	6	0	0	0	0
3	B	6	0	0	1	0
3	C	6	0	0	2	0
3	D	6	0	0	1	0
4	A	5	0	0	0	0
4	B	5	0	0	0	0
4	C	5	0	0	0	0
4	D	5	0	0	1	0
5	A	1	0	0	0	0
5	B	1	0	0	0	0
5	C	1	0	0	0	0
5	D	1	0	0	0	0
6	A	1	0	0	0	0
6	B	1	0	0	0	0
6	C	1	0	0	0	0
6	D	1	0	0	0	0
7	A	30	0	40	1	0
7	B	24	0	32	0	0
7	C	36	0	48	11	0
7	D	30	0	40	1	0
8	A	47	0	0	6	0
8	B	28	0	0	3	0
8	C	30	0	0	4	0
8	D	30	0	0	7	0
All	All	16271	0	16436	636	0

The all-atom clashscore is defined as the number of clashes found per 1000 atoms (including hydrogen atoms). The all-atom clashscore for this structure is 20.

The worst 5 of 636 close contacts within the same asymmetric unit are listed below, sorted by their clash magnitude.

Atom-1	Atom-2	Interatomic distance (Å)	Clash overlap (Å)
1:C:132:VAL:HG12	1:C:133:GLU:H	1.13	1.08
1:A:132:VAL:HG12	1:A:133:GLU:H	1.14	1.05

*Continued on next page...*

*Continued from previous page...*

Atom-1	Atom-2	Interatomic distance (Å)	Clash overlap (Å)
1:B:132:VAL:HG12	1:B:133:GLU:H	1.16	1.04
1:B:132:VAL:HG21	1:B:153:ASP:HA	1.42	1.01
1:D:132:VAL:HG12	1:D:133:GLU:H	1.19	1.00

There are no symmetry-related clashes.

## 5.3 Torsion angles [i](#)

### 5.3.1 Protein backbone [i](#)

In the following table, the Percentiles column shows the percent Ramachandran outliers of the chain as a percentile score with respect to all X-ray entries followed by that with respect to entries of similar resolution.

The Analysed column shows the number of residues for which the backbone conformation was analysed, and the total number of residues.

Mol	Chain	Analysed	Favoured	Allowed	Outliers	Percentiles	
1	A	517/567 (91%)	479 (93%)	28 (5%)	10 (2%)	8	26
1	B	517/567 (91%)	477 (92%)	30 (6%)	10 (2%)	8	26
1	C	517/567 (91%)	482 (93%)	24 (5%)	11 (2%)	7	23
1	D	517/567 (91%)	479 (93%)	27 (5%)	11 (2%)	7	23
All	All	2068/2268 (91%)	1917 (93%)	109 (5%)	42 (2%)	7	24

5 of 42 Ramachandran outliers are listed below:

Mol	Chain	Res	Type
1	A	154	GLU
1	B	154	GLU
1	C	154	GLU
1	D	154	GLU
1	A	125	LYS

### 5.3.2 Protein sidechains [i](#)

In the following table, the Percentiles column shows the percent sidechain outliers of the chain as a percentile score with respect to all X-ray entries followed by that with respect to entries of similar resolution.

The Analysed column shows the number of residues for which the sidechain conformation was

analysed, and the total number of residues.

Mol	Chain	Analysed	Rotameric	Outliers	Percentiles	
1	A	427/466 (92%)	418 (98%)	9 (2%)	53	84
1	B	427/466 (92%)	420 (98%)	7 (2%)	62	88
1	C	427/466 (92%)	419 (98%)	8 (2%)	57	85
1	D	427/466 (92%)	418 (98%)	9 (2%)	53	84
All	All	1708/1864 (92%)	1675 (98%)	33 (2%)	57	85

5 of 33 residues with a non-rotameric sidechain are listed below:

Mol	Chain	Res	Type
1	D	294	ARG
1	D	304	GLU
1	D	525	MET
1	B	304	GLU
1	B	255	ARG

Sometimes sidechains can be flipped to improve hydrogen bonding and reduce clashes. 5 of 17 such sidechains are listed below:

Mol	Chain	Res	Type
1	D	84	HIS
1	D	393	GLN
1	B	393	GLN
1	C	14	GLN
1	C	70	ASN

### 5.3.3 RNA ⓘ

There are no RNA molecules in this entry.

## 5.4 Non-standard residues in protein, DNA, RNA chains ⓘ

There are no non-standard protein/DNA/RNA residues in this entry.

## 5.5 Carbohydrates ⓘ

There are no monosaccharides in this entry.

## 5.6 Ligand geometry

Of 40 ligands modelled in this entry, 8 are monoatomic - leaving 32 for Mogul analysis.

In the following table, the Counts columns list the number of bonds (or angles) for which Mogul statistics could be retrieved, the number of bonds (or angles) that are observed in the model and the number of bonds (or angles) that are defined in the Chemical Component Dictionary. The Link column lists molecule types, if any, to which the group is linked. The Z score for a bond length (or angle) is the number of standard deviations the observed value is removed from the expected value. A bond length (or angle) with  $|Z| > 2$  is considered an outlier worth inspection. RMSZ is the root-mean-square of all Z scores of the bond lengths (or angles).

Mol	Type	Chain	Res	Link	Bond lengths			Bond angles		
					Counts	RMSZ	# $ Z  > 2$	Counts	RMSZ	# $ Z  > 2$
7	GOL	C	707	-	5,5,5	0.66	0	5,5,5	0.36	0
7	GOL	C	708	-	5,5,5	0.81	0	5,5,5	0.18	0
7	GOL	B	706	-	5,5,5	0.99	0	5,5,5	0.17	0
7	GOL	A	702	-	5,5,5	0.60	0	5,5,5	0.22	0
7	GOL	C	709	-	5,5,5	0.69	0	5,5,5	0.31	0
7	GOL	B	704	-	5,5,5	0.93	0	5,5,5	0.23	0
7	GOL	C	706	-	5,5,5	0.43	0	5,5,5	0.53	0
3	OXL	A	533	5	5,5,5	1.30	0	6,6,6	1.54	2 (33%)
3	OXL	B	533	5	5,5,5	1.25	1 (20%)	6,6,6	1.62	2 (33%)
3	OXL	D	533	5	5,5,5	1.48	0	6,6,6	1.45	2 (33%)
7	GOL	D	708	-	5,5,5	1.03	0	5,5,5	0.34	0
7	GOL	A	703	-	5,5,5	0.77	0	5,5,5	0.16	0
7	GOL	D	705	-	5,5,5	0.76	0	5,5,5	0.25	0
7	GOL	B	705	-	5,5,5	0.81	0	5,5,5	0.28	0
4	PO4	B	534	-	4,4,4	2.61	2 (50%)	6,6,6	0.91	0
3	OXL	C	533	5	5,5,5	1.25	0	6,6,6	1.63	2 (33%)
7	GOL	A	706	-	5,5,5	0.94	0	5,5,5	0.45	0
7	GOL	C	705	-	5,5,5	0.96	0	5,5,5	0.26	0
4	PO4	C	534	-	4,4,4	1.87	1 (25%)	6,6,6	1.20	0
7	GOL	A	704	-	5,5,5	0.81	0	5,5,5	0.42	0
4	PO4	D	534	-	4,4,4	2.48	1 (25%)	6,6,6	0.82	0
2	FBP	D	532	-	18,20,20	1.47	3 (16%)	23,32,32	0.88	0
7	GOL	A	705	-	5,5,5	0.81	0	5,5,5	0.13	0
7	GOL	B	703	-	5,5,5	0.64	0	5,5,5	0.28	0
7	GOL	D	707	-	5,5,5	0.62	0	5,5,5	0.24	0
2	FBP	A	532	-	18,20,20	1.47	4 (22%)	23,32,32	0.92	0
7	GOL	D	706	-	5,5,5	1.15	0	5,5,5	0.39	0
2	FBP	B	532	-	18,20,20	1.55	3 (16%)	23,32,32	1.02	3 (13%)
7	GOL	C	704	-	5,5,5	0.77	0	5,5,5	0.26	0
7	GOL	D	709	-	5,5,5	1.17	0	5,5,5	0.34	0

Mol	Type	Chain	Res	Link	Bond lengths			Bond angles		
					Counts	RMSZ	# Z  > 2	Counts	RMSZ	# Z  > 2
4	PO4	A	534	-	4,4,4	2.16	2 (50%)	6,6,6	0.96	0
2	FBP	C	532	-	18,20,20	1.53	4 (22%)	23,32,32	0.90	1 (4%)

In the following table, the Chirals column lists the number of chiral outliers, the number of chiral centers analysed, the number of these observed in the model and the number defined in the Chemical Component Dictionary. Similar counts are reported in the Torsion and Rings columns. '-' means no outliers of that kind were identified.

Mol	Type	Chain	Res	Link	Chirals	Torsions	Rings
7	GOL	C	707	-	-	3/4/4/4	-
7	GOL	C	708	-	-	2/4/4/4	-
7	GOL	B	706	-	-	4/4/4/4	-
7	GOL	A	702	-	-	2/4/4/4	-
7	GOL	C	709	-	-	4/4/4/4	-
7	GOL	B	704	-	-	4/4/4/4	-
7	GOL	C	706	-	-	3/4/4/4	-
3	OXL	A	533	5	-	0/4/4/4	-
3	OXL	B	533	5	-	0/4/4/4	-
3	OXL	D	533	5	-	0/4/4/4	-
7	GOL	D	708	-	-	0/4/4/4	-
7	GOL	A	703	-	-	3/4/4/4	-
7	GOL	D	705	-	-	4/4/4/4	-
7	GOL	B	705	-	-	2/4/4/4	-
3	OXL	C	533	5	-	0/4/4/4	-
7	GOL	A	706	-	-	4/4/4/4	-
7	GOL	C	705	-	-	2/4/4/4	-
7	GOL	A	704	-	-	4/4/4/4	-
2	FBP	D	532	-	-	2/13/32/32	0/1/1/1
7	GOL	A	705	-	-	0/4/4/4	-
7	GOL	B	703	-	-	2/4/4/4	-
7	GOL	D	707	-	-	1/4/4/4	-
2	FBP	A	532	-	-	1/13/32/32	0/1/1/1
7	GOL	D	706	-	-	2/4/4/4	-
2	FBP	B	532	-	-	1/13/32/32	0/1/1/1
7	GOL	C	704	-	-	4/4/4/4	-
7	GOL	D	709	-	-	2/4/4/4	-
2	FBP	C	532	-	-	1/13/32/32	0/1/1/1

The worst 5 of 21 bond length outliers are listed below:

Mol	Chain	Res	Type	Atoms	Z	Observed(Å)	Ideal(Å)
4	B	534	PO4	P-O1	4.57	1.61	1.50
4	D	534	PO4	P-O1	4.37	1.61	1.50
2	B	532	FBP	P1-O3P	-3.58	1.41	1.54
4	C	534	PO4	P-O1	3.52	1.59	1.50
4	A	534	PO4	P-O1	3.51	1.59	1.50

The worst 5 of 12 bond angle outliers are listed below:

Mol	Chain	Res	Type	Atoms	Z	Observed(°)	Ideal(°)
3	A	533	OXL	O3-C1-C2	2.59	120.87	113.16
3	B	533	OXL	O3-C1-C2	2.56	120.77	113.16
3	D	533	OXL	O3-C1-C2	2.47	120.51	113.16
3	B	533	OXL	O1-C1-C2	-2.38	113.15	120.78
3	C	533	OXL	O3-C1-C2	2.28	119.95	113.16

There are no chirality outliers.

5 of 57 torsion outliers are listed below:

Mol	Chain	Res	Type	Atoms
7	A	703	GOL	C1-C2-C3-O3
7	A	706	GOL	O1-C1-C2-C3
7	A	706	GOL	C1-C2-C3-O3
7	B	703	GOL	C1-C2-C3-O3
7	B	704	GOL	O1-C1-C2-C3

There are no ring outliers.

14 monomers are involved in 23 short contacts:

Mol	Chain	Res	Type	Clashes	Symm-Clashes
7	C	707	GOL	7	0
7	C	709	GOL	2	0
7	C	706	GOL	1	0
3	B	533	OXL	1	0
3	D	533	OXL	1	0
7	D	705	GOL	1	0
3	C	533	OXL	2	0
7	A	704	GOL	1	0
4	D	534	PO4	1	0
2	D	532	FBP	1	0
2	A	532	FBP	1	0

*Continued on next page...*

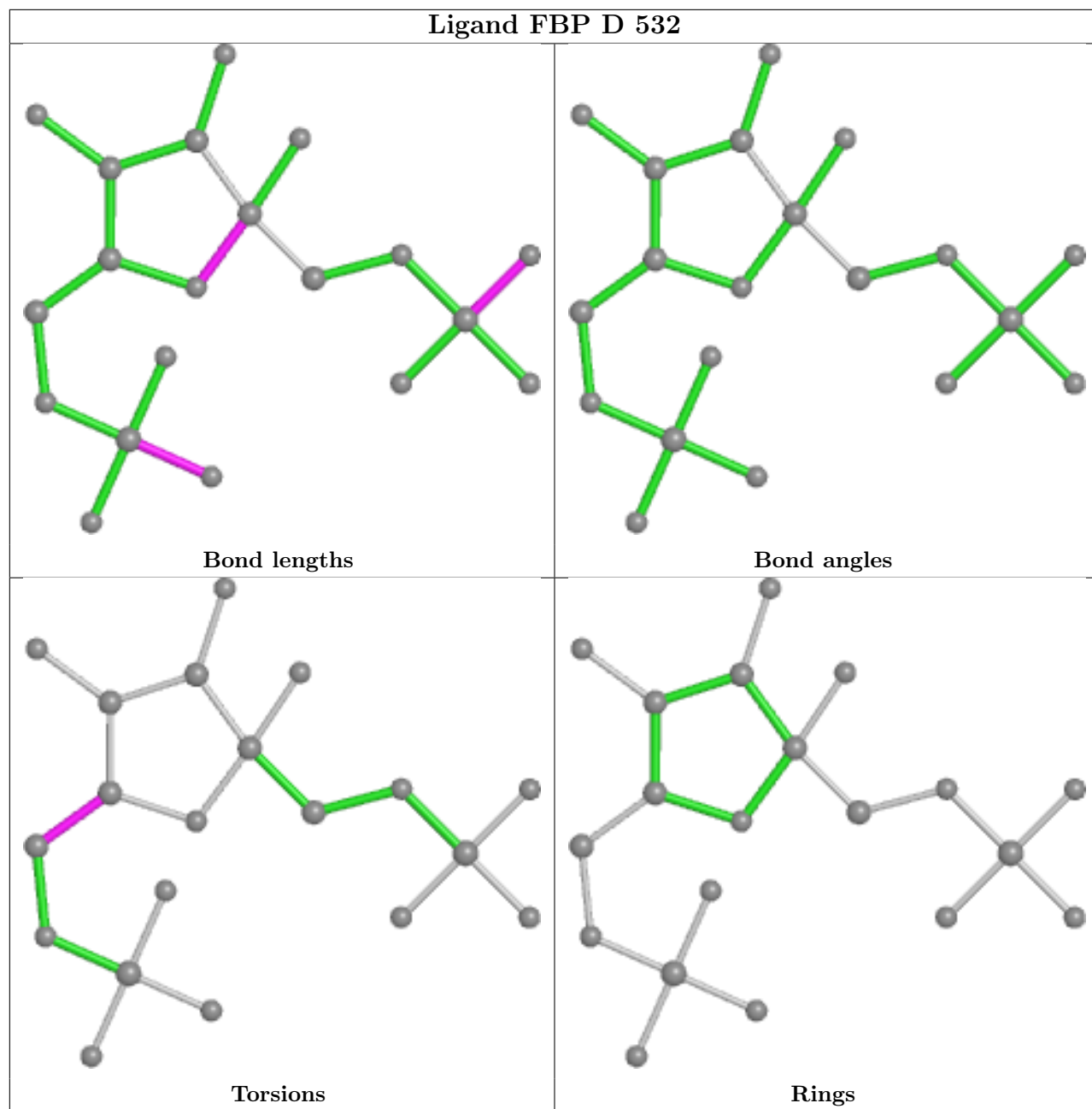
*Continued from previous page...*

Mol	Chain	Res	Type	Clashes	Symm-Clashes
2	B	532	FBP	1	0
7	C	704	GOL	1	0
2	C	532	FBP	2	0

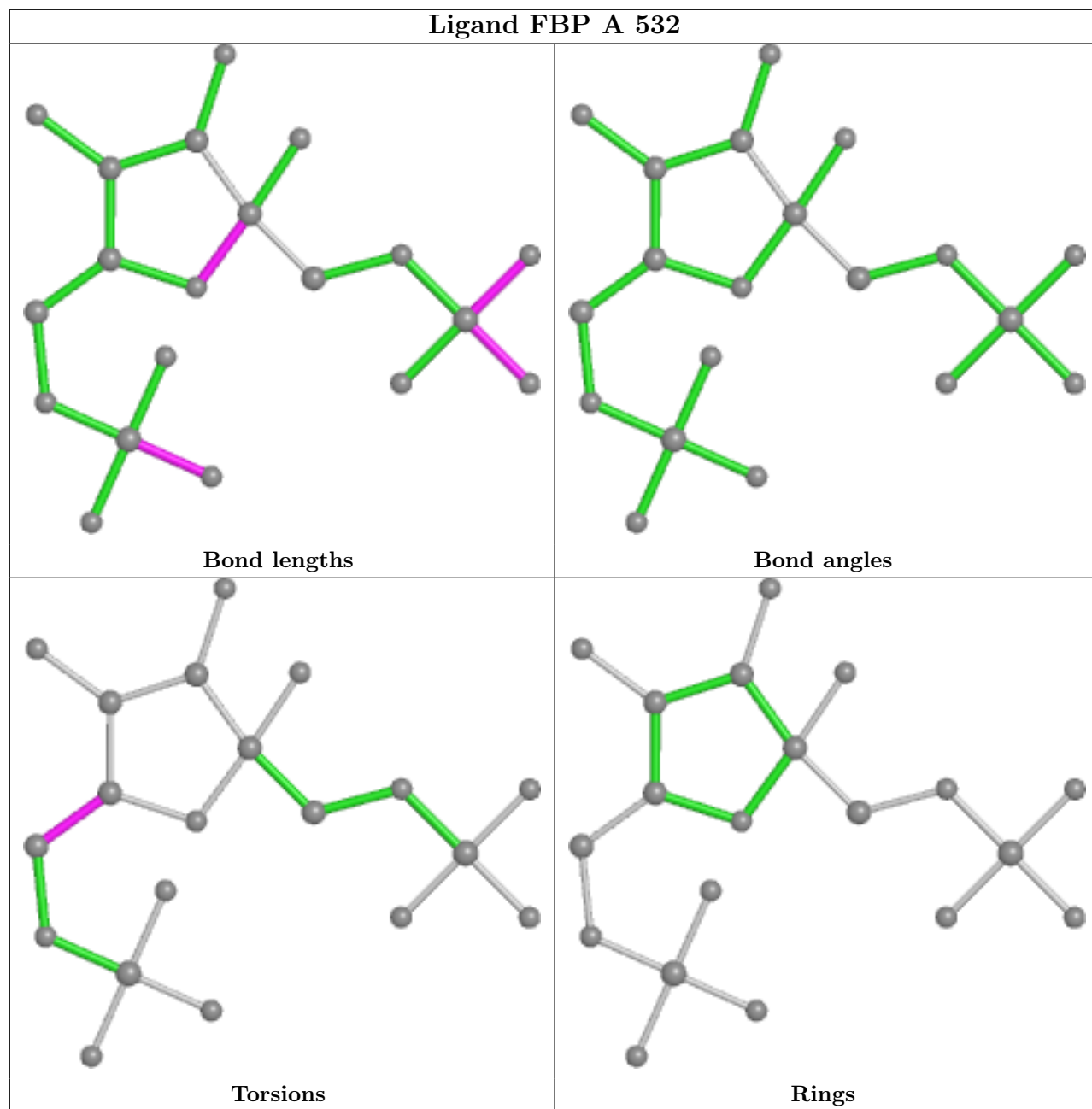
The following is a two-dimensional graphical depiction of Mogul quality analysis of bond lengths, bond angles, torsion angles, and ring geometry for all instances of the Ligand of Interest. In addition, ligands with molecular weight > 250 and outliers as shown on the validation Tables will also be included. For torsion angles, if less than 5% of the Mogul distribution of torsion angles is within 10 degrees of the torsion angle in question, then that torsion angle is considered an outlier. Any bond that is central to one or more torsion angles identified as an outlier by Mogul will be highlighted in the graph. For rings, the root-mean-square deviation (RMSD) between the ring in question and similar rings identified by Mogul is calculated over all ring torsion angles. If the average RMSD is greater than 60 degrees and the minimal RMSD between the ring in question and any Mogul-identified rings is also greater than 60 degrees, then that ring is considered an outlier. The outliers are highlighted in purple. The color gray indicates Mogul did not find sufficient equivalents in the CSD to analyse the geometry.



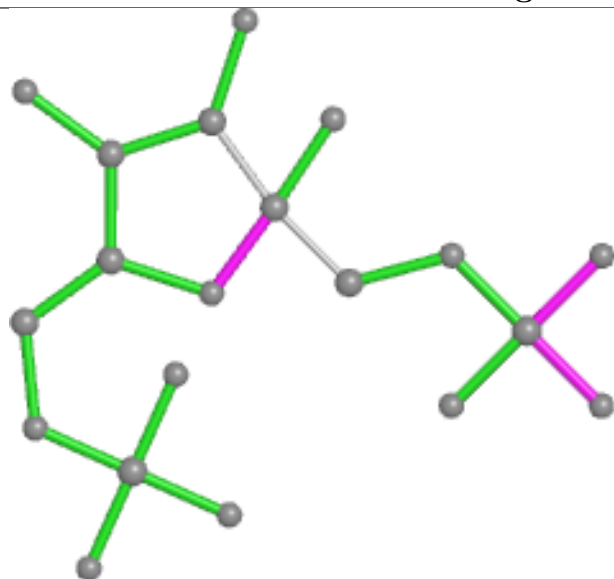
## Ligand FBP D 532



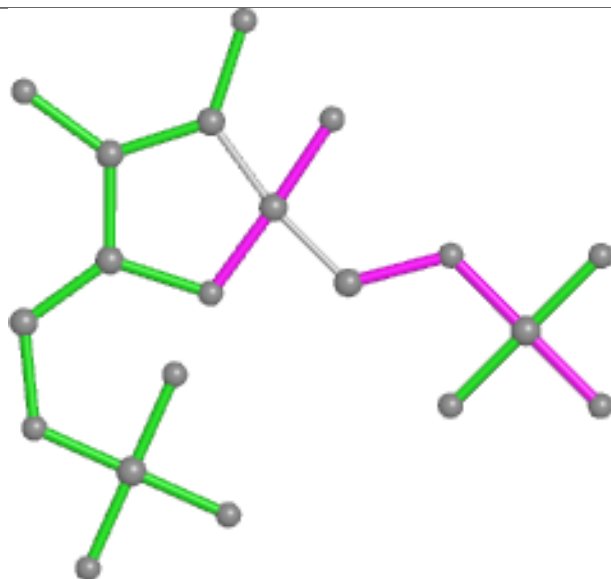
## Ligand FBP A 532



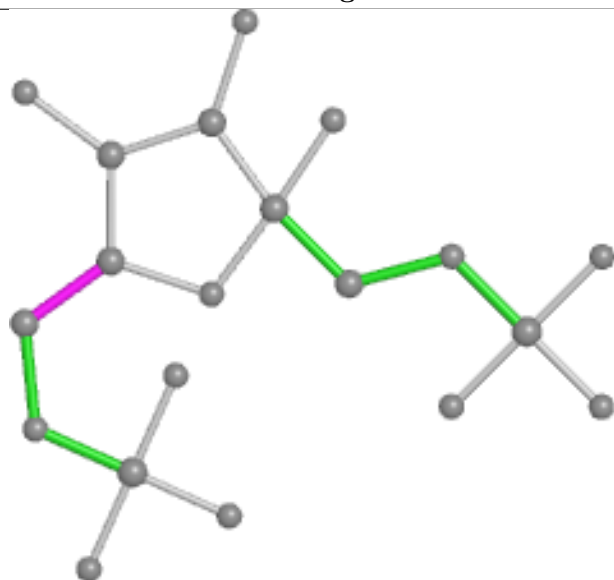
## Ligand FBP B 532



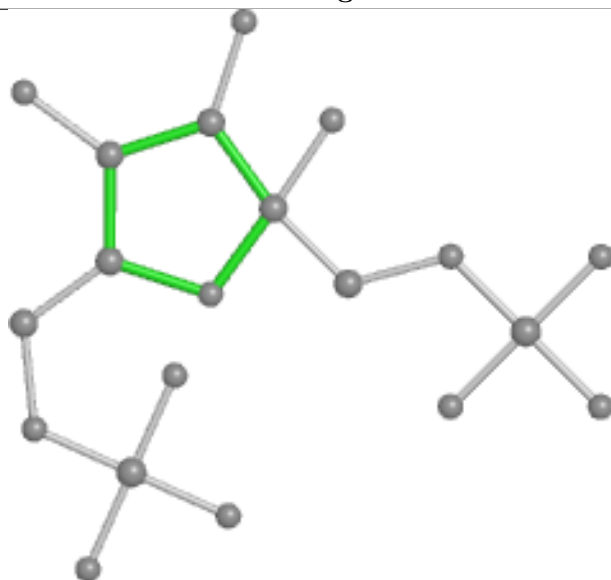
Bond lengths



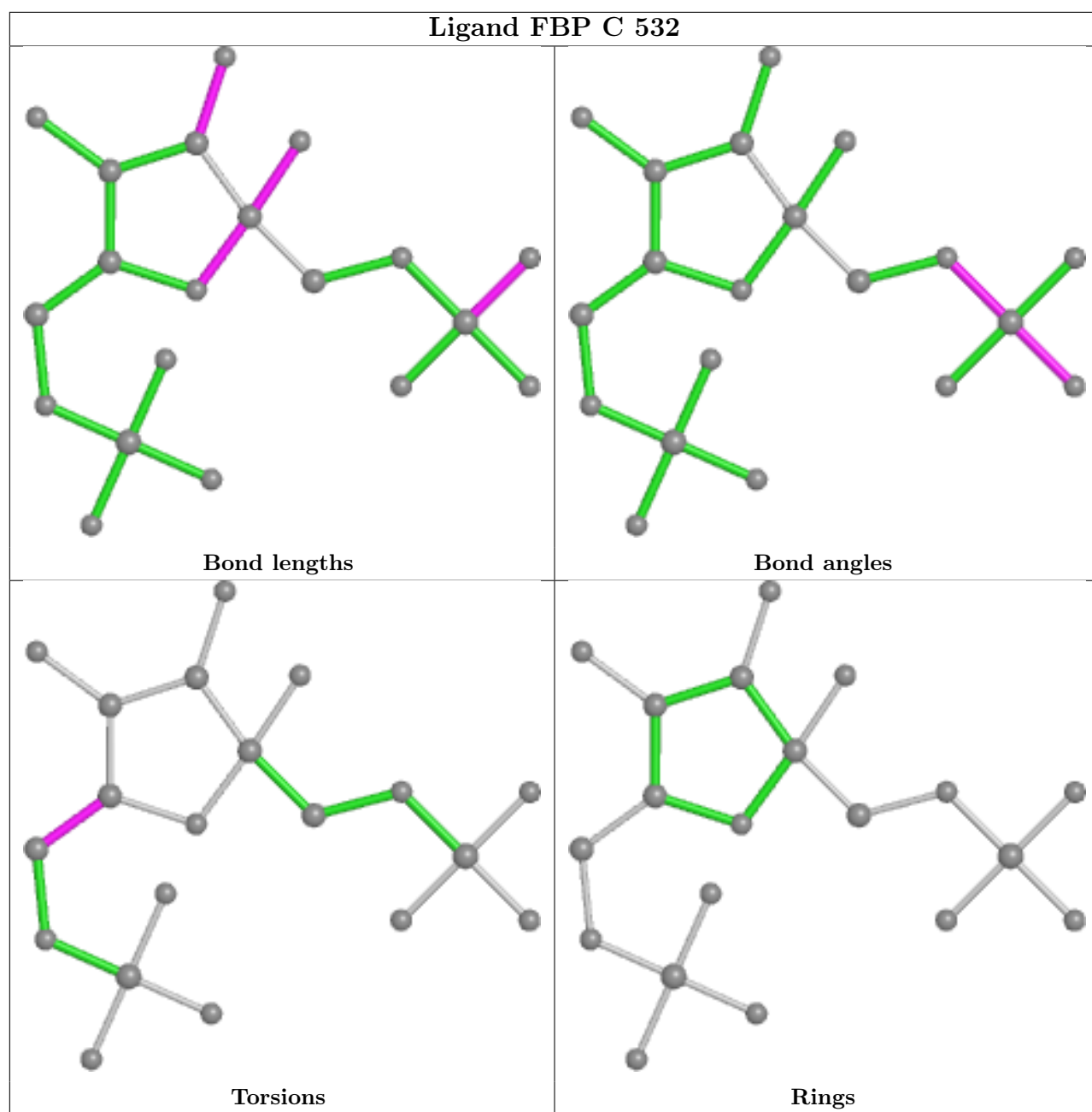
Bond angles



Torsions



Rings



## 5.7 Other polymers [i](#)

There are no such residues in this entry.

## 5.8 Polymer linkage issues [i](#)

There are no chain breaks in this entry.

## 6 Fit of model and data [i](#)

### 6.1 Protein, DNA and RNA chains [i](#)

In the following table, the column labelled ‘#RSRZ> 2’ contains the number (and percentage) of RSRZ outliers, followed by percent RSRZ outliers for the chain as percentile scores relative to all X-ray entries and entries of similar resolution. The OWAB column contains the minimum, median, 95<sup>th</sup> percentile and maximum values of the occupancy-weighted average B-factor per residue. The column labelled ‘Q< 0.9’ lists the number of (and percentage) of residues with an average occupancy less than 0.9.

Mol	Chain	Analysed	<RSRZ>	#RSRZ>2	OWAB(Å <sup>2</sup> )	Q<0.9
1	A	519/567 (91%)	0.13	37 (7%) 16 9	23, 60, 99, 99	0
1	B	519/567 (91%)	0.17	34 (6%) 18 11	29, 65, 99, 99	0
1	C	519/567 (91%)	-0.04	9 (1%) 70 63	26, 65, 97, 99	0
1	D	519/567 (91%)	0.17	35 (6%) 17 10	34, 69, 99, 99	0
All	All	2076/2268 (91%)	0.11	115 (5%) 25 16	23, 65, 99, 99	0

The worst 5 of 115 RSRZ outliers are listed below:

Mol	Chain	Res	Type	RSRZ
1	A	142	ILE	6.3
1	C	13	ILE	5.8
1	D	140	LEU	5.7
1	A	13	ILE	5.6
1	A	190	ALA	5.6

### 6.2 Non-standard residues in protein, DNA, RNA chains [i](#)

There are no non-standard protein/DNA/RNA residues in this entry.

### 6.3 Carbohydrates [i](#)

There are no monosaccharides in this entry.

### 6.4 Ligands [i](#)

In the following table, the Atoms column lists the number of modelled atoms in the group and the number defined in the chemical component dictionary. The B-factors column lists the minimum, median, 95<sup>th</sup> percentile and maximum values of B factors of atoms in the group. The column labelled ‘Q< 0.9’ lists the number of atoms with occupancy less than 0.9.

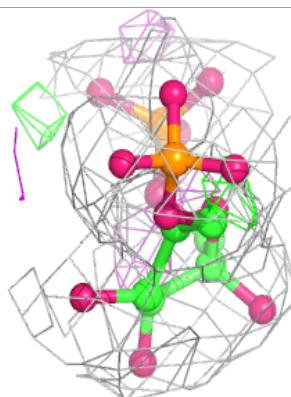
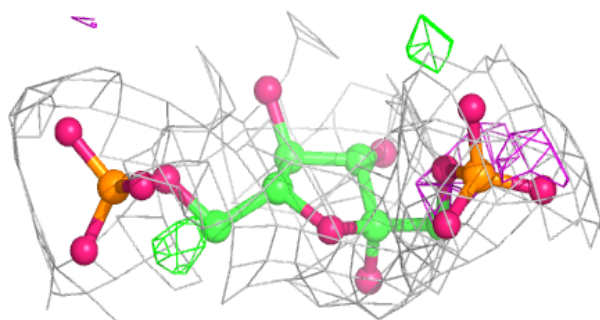
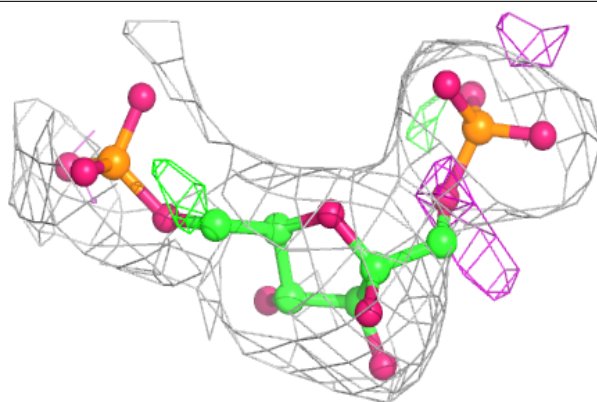
Mol	Type	Chain	Res	Atoms	RSCC	RSR	B-factors( $\text{\AA}^2$ )	Q<0.9
7	GOL	C	708	6/6	0.74	0.30	66,66,66,66	0
7	GOL	B	705	6/6	0.76	0.28	66,66,66,66	0
7	GOL	C	705	6/6	0.77	0.49	66,66,66,66	0
7	GOL	C	707	6/6	0.78	0.46	66,66,66,66	0
7	GOL	B	704	6/6	0.78	0.30	66,66,66,66	0
7	GOL	D	708	6/6	0.78	0.31	66,66,66,66	0
7	GOL	D	706	6/6	0.80	0.26	66,66,66,66	0
6	K	C	703	1/1	0.82	0.13	66,66,66,66	0
7	GOL	A	706	6/6	0.84	0.35	42,42,42,42	0
7	GOL	A	705	6/6	0.84	0.26	66,66,66,66	0
7	GOL	A	704	6/6	0.86	0.34	66,66,66,66	0
7	GOL	D	705	6/6	0.86	0.25	66,66,66,66	0
7	GOL	B	703	6/6	0.87	0.19	66,66,66,66	0
6	K	A	701	1/1	0.89	0.19	66,66,66,66	0
3	OXL	A	533	6/6	0.89	0.14	66,66,66,66	0
7	GOL	C	704	6/6	0.90	0.13	66,66,66,66	0
7	GOL	A	703	6/6	0.90	0.24	66,66,66,66	0
7	GOL	C	709	6/6	0.90	0.22	42,42,42,42	0
3	OXL	C	533	6/6	0.91	0.26	66,66,66,66	0
2	FBP	D	532	20/20	0.92	0.14	66,66,66,66	0
7	GOL	B	706	6/6	0.92	0.16	42,42,42,42	0
7	GOL	D	707	6/6	0.92	0.26	66,66,66,66	0
7	GOL	C	706	6/6	0.92	0.20	66,66,66,66	0
4	PO4	C	534	5/5	0.93	0.14	66,66,66,66	0
7	GOL	A	702	6/6	0.93	0.15	66,66,66,66	0
4	PO4	A	534	5/5	0.93	0.20	66,66,66,66	0
6	K	B	702	1/1	0.93	0.21	66,66,66,66	0
7	GOL	D	709	6/6	0.93	0.35	42,42,42,42	0
5	MG	A	601	1/1	0.94	0.22	66,66,66,66	0
5	MG	B	602	1/1	0.94	0.24	66,66,66,66	0
4	PO4	B	534	5/5	0.94	0.17	66,66,66,66	0
2	FBP	C	532	20/20	0.94	0.12	66,66,66,66	0
4	PO4	D	534	5/5	0.94	0.17	66,66,66,66	0
5	MG	D	604	1/1	0.95	0.16	66,66,66,66	0
2	FBP	B	532	20/20	0.95	0.16	66,66,66,66	0
3	OXL	D	533	6/6	0.95	0.20	66,66,66,66	0
2	FBP	A	532	20/20	0.97	0.17	66,66,66,66	0
3	OXL	B	533	6/6	0.97	0.17	66,66,66,66	0
5	MG	C	603	1/1	0.97	0.33	66,66,66,66	0
6	K	D	704	1/1	0.98	0.09	66,66,66,66	0

The following is a graphical depiction of the model fit to experimental electron density of all instances of the Ligand of Interest. In addition, ligands with molecular weight > 250 and outliers as shown on the geometry validation Tables will also be included. Each fit is shown from different

orientation to approximate a three-dimensional view.

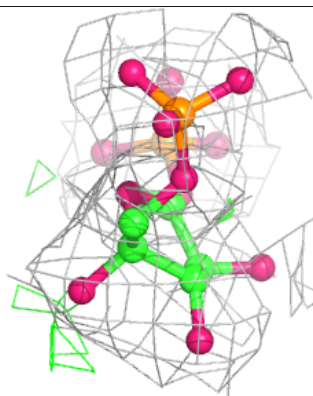
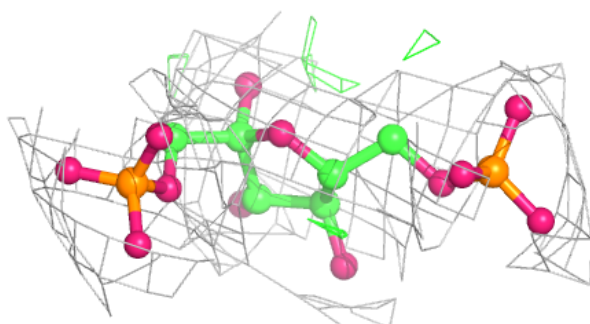
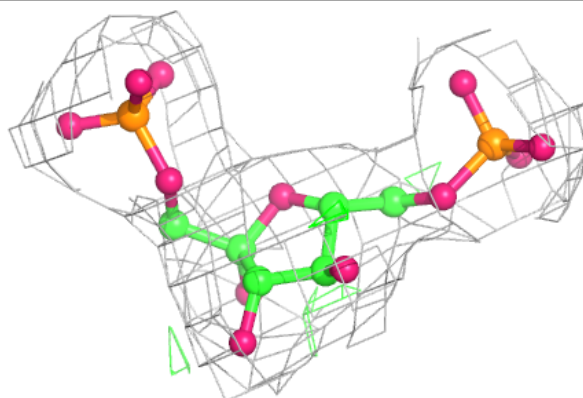
**Electron density around FBP D 532:**

$2mF_o-DF_c$  (at 0.7 rmsd) in gray  
 $mF_o-DF_c$  (at 3 rmsd) in purple (negative)  
and green (positive)



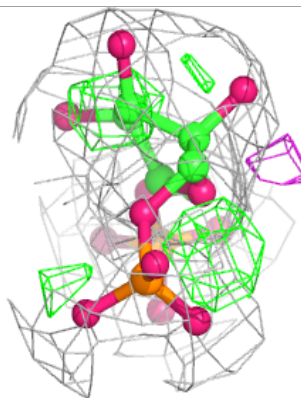
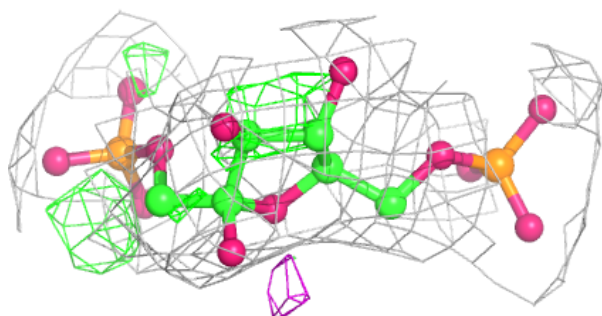
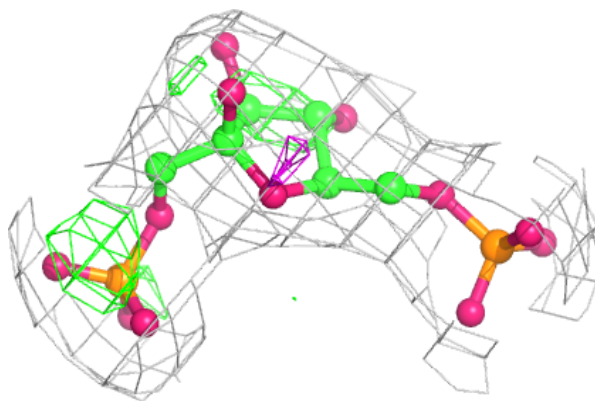
**Electron density around FBP C 532:**

$2mF_o-DF_c$  (at 0.7 rmsd) in gray  
 $mF_o-DF_c$  (at 3 rmsd) in purple (negative)  
and green (positive)

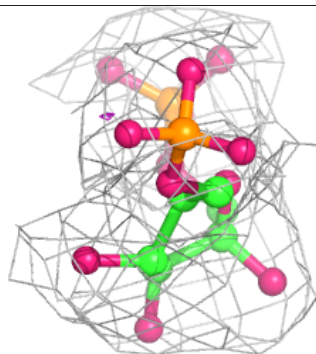
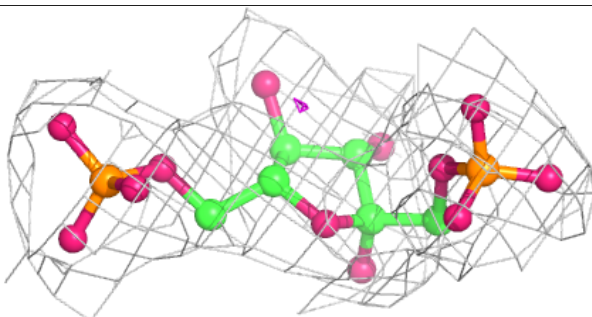
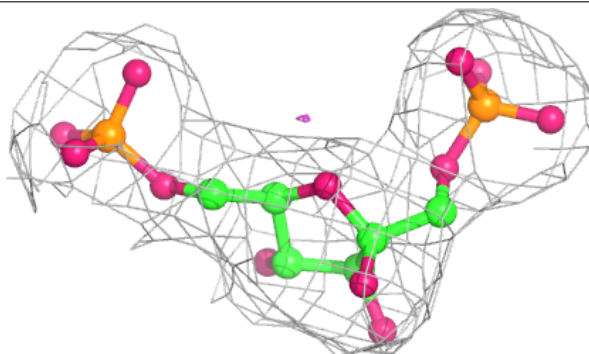


**Electron density around FBP B 532:**

$2mF_o-DF_c$  (at 0.7 rmsd) in gray  
 $mF_o-DF_c$  (at 3 rmsd) in purple (negative)  
and green (positive)

**Electron density around FBP A 532:**

$2mF_o-DF_c$  (at 0.7 rmsd) in gray  
 $mF_o-DF_c$  (at 3 rmsd) in purple (negative)  
and green (positive)





## 6.5 Other polymers [i](#)

There are no such residues in this entry.