



Full wwPDB X-ray Structure Validation Report ⓘ

May 24, 2020 – 08:52 am BST

PDB ID : 5T67
Title : x-ray structure of the KijD1 C3-methyltransferase from *Actinomadura kijani-*
ata in complex with SAH and dTDP-sugar product
Authors : Holden, H.M.; Thoden, J.B.; Dow, G.T.
Deposited on : 2016-09-01
Resolution : 1.60 Å(reported)

This is a Full wwPDB X-ray Structure Validation Report for a publicly released PDB entry.

We welcome your comments at validation@mail.wwpdb.org

A user guide is available at

<https://www.wwpdb.org/validation/2017/XrayValidationReportHelp>

with specific help available everywhere you see the ⓘ symbol.

The following versions of software and data (see [references ⓘ](#)) were used in the production of this report:

MolProbity : 4.02b-467
Mogul : 1.8.5 (274361), CSD as541be (2020)
Xtriage (Phenix) : 1.13
EDS : 2.11
buster-report : 1.1.7 (2018)
Percentile statistics : 20191225.v01 (using entries in the PDB archive December 25th 2019)
Refmac : 5.8.0158
CCP4 : 7.0.044 (Gargrove)
Ideal geometry (proteins) : Engh & Huber (2001)
Ideal geometry (DNA, RNA) : Parkinson et al. (1996)
Validation Pipeline (wwPDB-VP) : 2.11

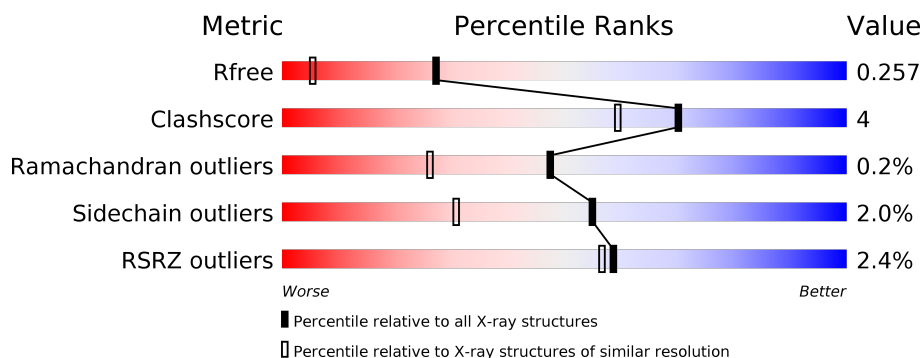
1 Overall quality at a glance

The following experimental techniques were used to determine the structure:

X-RAY DIFFRACTION

The reported resolution of this entry is 1.60 Å.

Percentile scores (ranging between 0-100) for global validation metrics of the entry are shown in the following graphic. The table shows the number of entries on which the scores are based.



Metric	Whole archive (#Entries)	Similar resolution (#Entries, resolution range(Å))
R_{free}	130704	3398 (1.60-1.60)
Clashscore	141614	3665 (1.60-1.60)
Ramachandran outliers	138981	3564 (1.60-1.60)
Sidechain outliers	138945	3563 (1.60-1.60)
RSRZ outliers	127900	3321 (1.60-1.60)

The table below summarises the geometric issues observed across the polymeric chains and their fit to the electron density. The red, orange, yellow and green segments on the lower bar indicate the fraction of residues that contain outliers for ≥ 3 , 2, 1 and 0 types of geometric quality criteria respectively. A grey segment represents the fraction of residues that are not modelled. The numeric value for each fraction is indicated below the corresponding segment, with a dot representing fractions $\leq 5\%$. The upper red bar (where present) indicates the fraction of residues that have poor fit to the electron density. The numeric value is given above the bar.

Mol	Chain	Length	Quality of chain
1	A	416	
1	B	416	

2 Entry composition

There are 8 unique types of molecules in this entry. The entry contains 7249 atoms, of which 0 are hydrogens and 0 are deuteriums.

In the tables below, the ZeroOcc column contains the number of atoms modelled with zero occupancy, the AltConf column contains the number of residues with at least one atom in alternate conformation and the Trace column contains the number of residues modelled with at most 2 atoms.

- Molecule 1 is a protein called Sugar 3-C-methyl transferase.

Mol	Chain	Residues	Atoms					ZeroOcc	AltConf	Trace
1	A	405	Total	C	N	O	S	0	5	0
			3180	2009	564	591	16			
1	B	402	Total	C	N	O	S	0	3	0
			3142	1987	558	580	17			

There are 4 discrepancies between the modelled and reference sequences:

Chain	Residue	Modelled	Actual	Comment	Reference
A	-1	GLY	-	expression tag	UNP B3TMQ9
A	0	HIS	-	expression tag	UNP B3TMQ9
B	-1	GLY	-	expression tag	UNP B3TMQ9
B	0	HIS	-	expression tag	UNP B3TMQ9

- Molecule 2 is ZINC ION (three-letter code: ZN) (formula: Zn).

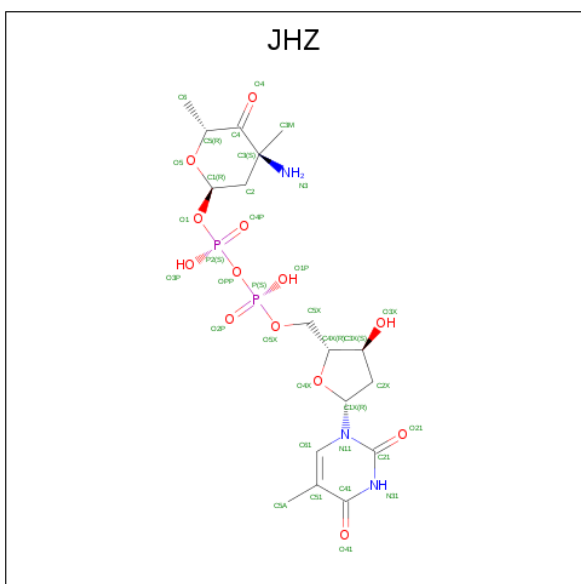
Mol	Chain	Residues	Atoms		ZeroOcc	AltConf
2	B	1	Total	Zn	0	0
			1	1		
2	A	1	Total	Zn	0	0
			1	1		

- Molecule 3 is S-ADENOSYL-L-HOMOCYSTEINE (three-letter code: SAH) (formula: C₁₄H₂₀N₆O₅S).



Mol	Chain	Residues	Atoms					ZeroOcc	AltConf
3	A	1	Total	C	N	O	S	0	0
			26	14	6	5	1		
3	B	1	Total	C	N	O	S	0	0
			26	14	6	5	1		

- Molecule 4 is (2R,4S,6R)-4-amino-4,6-dimethyl-5-oxotetrahydro-2H-pyran-2-yl [(2R,3S,5R)-3-hydroxy-5-(5-methyl-2,4-dioxo-3,4-dihydropyrimidin-1(2H)-yl)tetrahydrofuran-2-yl]methyl dihydrogen diphosphate (non-preferred name) (three-letter code: JHZ) (formula: C₁₇H₂₇N₃O₁₃P₂).



Mol	Chain	Residues	Atoms					ZeroOcc	AltConf
4	A	1	Total	C	N	O	P	0	0
			35	17	3	13	2		
4	B	1	Total	C	N	O	P	0	0
			35	17	3	13	2		

- Molecule 5 is 1,2-ETHANEDIOL (three-letter code: EDO) (formula: C₂H₆O₂).



Mol	Chain	Residues	Atoms			ZeroOcc	AltConf
5	A	1	Total	C	O	0	0
			4	2	2		
5	A	1	Total	C	O	0	0
			4	2	2		
5	A	1	Total	C	O	0	0
			4	2	2		
5	B	1	Total	C	O	0	0
			4	2	2		

- Molecule 6 is MAGNESIUM ION (three-letter code: MG) (formula: Mg).

Mol	Chain	Residues	Atoms		ZeroOcc	AltConf
6	A	2	Total	Mg	0	0
			2	2		

- Molecule 7 is CHLORIDE ION (three-letter code: CL) (formula: Cl).

Mol	Chain	Residues	Atoms		ZeroOcc	AltConf
7	A	1	Total 1	Cl 1	0	0

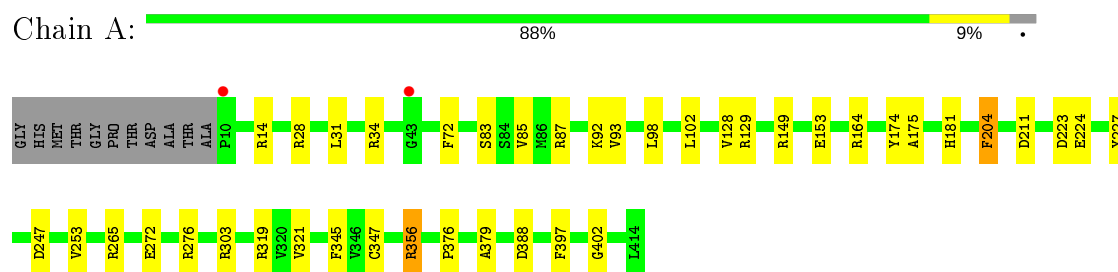
- Molecule 8 is water.

Mol	Chain	Residues	Atoms		ZeroOcc	AltConf
8	A	488	Total 488	O 488	0	0
8	B	296	Total 296	O 296	0	0

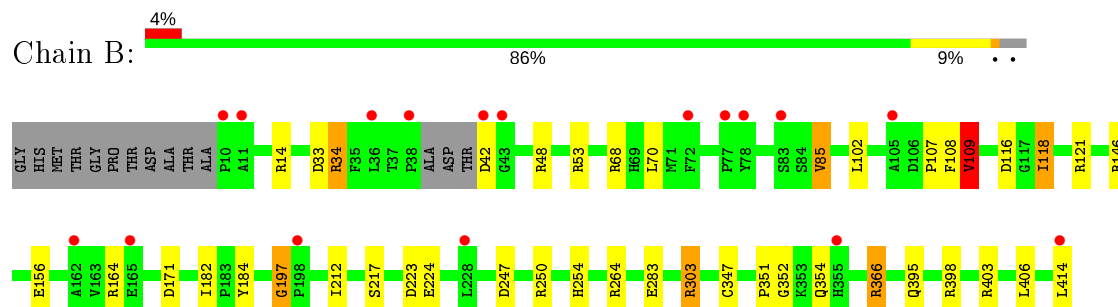
3 Residue-property plots

These plots are drawn for all protein, RNA and DNA chains in the entry. The first graphic for a chain summarises the proportions of the various outlier classes displayed in the second graphic. The second graphic shows the sequence view annotated by issues in geometry and electron density. Residues are color-coded according to the number of geometric quality criteria for which they contain at least one outlier: green = 0, yellow = 1, orange = 2 and red = 3 or more. A red dot above a residue indicates a poor fit to the electron density ($RSRZ > 2$). Stretches of 2 or more consecutive residues without any outlier are shown as a green connector. Residues present in the sample, but not in the model, are shown in grey.

- Molecule 1: Sugar 3-C-methyl transferase



- Molecule 1: Sugar 3-C-methyl transferase



4 Data and refinement statistics

Property	Value	Source
Space group	P 21 21 21	Depositor
Cell constants a, b, c, α , β , γ	51.09Å 108.89Å 142.78Å 90.00° 90.00° 90.00°	Depositor
Resolution (Å)	30.00 – 1.60 29.85 – 1.60	Depositor EDS
% Data completeness (in resolution range)	96.5 (30.00-1.60) 96.5 (29.85-1.60)	Depositor EDS
R_{merge}	(Not available)	Depositor
R_{sym}	0.08	Depositor
$\langle I/\sigma(I) \rangle$ ¹	1.66 (at 1.60Å)	Xtriage
Refinement program	REFMAC 5.8.0124	Depositor
R, R_{free}	0.198 , 0.249 0.207 , 0.257	Depositor DCC
R_{free} test set	5084 reflections (4.98%)	wwPDB-VP
Wilson B-factor (Å ²)	12.6	Xtriage
Anisotropy	0.186	Xtriage
Bulk solvent k_{sol} (e/Å ³), B_{sol} (Å ²)	0.34 , 48.7	EDS
L-test for twinning ²	$\langle L \rangle = 0.47$, $\langle L^2 \rangle = 0.30$	Xtriage
Estimated twinning fraction	No twinning to report.	Xtriage
F_o, F_c correlation	0.95	EDS
Total number of atoms	7249	wwPDB-VP
Average B, all atoms (Å ²)	22.0	wwPDB-VP

Xtriage's analysis on translational NCS is as follows: *The largest off-origin peak in the Patterson function is 4.59% of the height of the origin peak. No significant pseudotranslation is detected.*

¹Intensities estimated from amplitudes.

²Theoretical values of $\langle |L| \rangle$, $\langle L^2 \rangle$ for acentric reflections are 0.5, 0.333 respectively for untwinned datasets, and 0.375, 0.2 for perfectly twinned datasets.

5 Model quality ⓘ

5.1 Standard geometry ⓘ

Bond lengths and bond angles in the following residue types are not validated in this section: ZN, SAH, CL, MG, EDO, JHZ

The Z score for a bond length (or angle) is the number of standard deviations the observed value is removed from the expected value. A bond length (or angle) with $|Z| > 5$ is considered an outlier worth inspection. RMSZ is the root-mean-square of all Z scores of the bond lengths (or angles).

Mol	Chain	Bond lengths		Bond angles	
		RMSZ	# Z >5	RMSZ	# Z >5
1	A	0.76	0/3267	1.15	18/4435 (0.4%)
1	B	0.60	0/3222	1.06	11/4371 (0.3%)
All	All	0.68	0/6489	1.11	29/8806 (0.3%)

There are no bond length outliers.

All (29) bond angle outliers are listed below:

Mol	Chain	Res	Type	Atoms	Z	Observed(°)	Ideal(°)
1	B	109	VAL	CB-CA-C	-9.56	93.24	111.40
1	B	223	ASP	CB-CG-OD2	7.75	125.27	118.30
1	B	250	ARG	NE-CZ-NH2	-7.52	116.54	120.30
1	B	118	ILE	CB-CA-C	-7.40	96.80	111.60
1	A	247	ASP	CB-CG-OD1	7.20	124.78	118.30
1	A	265	ARG	NE-CZ-NH2	-6.93	116.83	120.30
1	A	388	ASP	CB-CG-OD1	6.66	124.29	118.30
1	A	87	ARG	NE-CZ-NH1	6.57	123.58	120.30
1	B	250	ARG	NE-CZ-NH1	6.57	123.58	120.30
1	A	164	ARG	NE-CZ-NH1	-6.55	117.03	120.30
1	A	149	ARG	NE-CZ-NH1	6.44	123.52	120.30
1	A	28	ARG	NE-CZ-NH2	6.41	123.51	120.30
1	A	303	ARG	NE-CZ-NH2	-6.32	117.14	120.30
1	B	48	ARG	NE-CZ-NH1	6.06	123.33	120.30
1	A	356	ARG	NE-CZ-NH2	-5.95	117.33	120.30
1	A	211	ASP	CB-CG-OD2	5.71	123.44	118.30
1	B	303	ARG	NE-CZ-NH1	-5.54	117.53	120.30
1	B	164	ARG	NE-CZ-NH1	5.52	123.06	120.30
1	A	164	ARG	NE-CZ-NH2	5.48	123.04	120.30
1	B	247	ASP	CB-CG-OD1	5.36	123.12	118.30
1	A	227	TYR	CB-CG-CD1	-5.35	117.79	121.00
1	B	146	ARG	NE-CZ-NH1	5.24	122.92	120.30

Continued on next page...

Continued from previous page...

Mol	Chain	Res	Type	Atoms	Z	Observed(°)	Ideal(°)
1	A	223	ASP	CB-CG-OD2	5.12	122.91	118.30
1	B	53	ARG	NE-CZ-NH1	5.11	122.85	120.30
1	A	129	ARG	NE-CZ-NH2	5.10	122.85	120.30
1	A	265	ARG	NE-CZ-NH1	5.08	122.84	120.30
1	A	28	ARG	NE-CZ-NH1	-5.07	117.77	120.30
1	A	204	PHE	CB-CG-CD1	5.05	124.34	120.80
1	A	253	VAL	CG1-CB-CG2	5.04	118.97	110.90

There are no chirality outliers.

There are no planarity outliers.

5.2 Too-close contacts ⓘ

In the following table, the Non-H and H(model) columns list the number of non-hydrogen atoms and hydrogen atoms in the chain respectively. The H(added) column lists the number of hydrogen atoms added and optimized by MolProbity. The Clashes column lists the number of clashes within the asymmetric unit, whereas Symm-Clashes lists symmetry related clashes.

Mol	Chain	Non-H	H(model)	H(added)	Clashes	Symm-Clashes
1	A	3180	0	3092	26	0
1	B	3142	0	3049	21	0
2	A	1	0	0	0	0
2	B	1	0	0	0	0
3	A	26	0	19	1	0
3	B	26	0	19	0	0
4	A	35	0	25	0	0
4	B	35	0	25	1	0
5	A	12	0	18	0	0
5	B	4	0	6	0	0
6	A	2	0	0	0	0
7	A	1	0	0	0	0
8	A	488	0	0	6	0
8	B	296	0	0	2	1
All	All	7249	0	6253	46	1

The all-atom clashscore is defined as the number of clashes found per 1000 atoms (including hydrogen atoms). The all-atom clashscore for this structure is 4.

All (46) close contacts within the same asymmetric unit are listed below, sorted by their clash magnitude.

Atom-1	Atom-2	Interatomic distance (Å)	Clash overlap (Å)
1:A:83:SER:HB3	8:A:927:HOH:O	1.61	0.98
1:A:83:SER:CB	8:A:927:HOH:O	2.17	0.88
1:A:31:LEU:HD12	1:A:34:ARG:HG3	1.58	0.84
1:A:98:LEU:HD23	1:A:102:LEU:HD11	1.67	0.74
1:A:31:LEU:CD1	1:A:34:ARG:HG3	2.23	0.67
1:A:153:GLU:OE2	8:A:601:HOH:O	2.13	0.66
1:A:321[A]:VAL:HG22	1:A:376:PRO:HG3	1.77	0.65
1:A:98:LEU:CD2	1:A:128:VAL:HG21	2.28	0.64
1:A:345:PHE:HE1	1:A:347[A]:CYS:HG	1.45	0.62
1:B:254:HIS:CE1	4:B:503:JHZ:H6	2.37	0.60
1:A:321[A]:VAL:CG2	1:A:376:PRO:HG3	2.35	0.56
1:B:406:LEU:HD13	1:B:414:LEU:HD12	1.88	0.55
1:B:197:GLY:O	1:B:264:ARG:NH1	2.35	0.55
1:B:34:ARG:NH2	1:B:70:LEU:O	2.40	0.54
1:A:356:ARG:NH1	8:A:606:HOH:O	2.40	0.54
1:A:276[A]:ARG:CG	1:A:276[A]:ARG:HH11	2.22	0.53
1:B:347[A]:CYS:HA	1:B:366:ARG:O	2.10	0.52
1:B:395:GLN:OE1	1:B:398:ARG:NH1	2.44	0.50
1:A:272:GLU:OE1	1:A:276[A]:ARG:NH2	2.45	0.49
1:A:93:VAL:HG11	1:A:174:TYR:CZ	2.48	0.48
1:B:108:PHE:N	1:B:171:ASP:OD2	2.45	0.48
1:A:83:SER:HB2	8:A:927:HOH:O	1.95	0.48
1:A:98:LEU:HD22	1:A:128:VAL:HG21	1.95	0.47
1:A:181:HIS:HA	1:A:224:GLU:O	2.15	0.47
1:A:345:PHE:HE1	1:A:347[A]:CYS:SG	2.37	0.47
1:B:107:PRO:HA	1:B:171:ASP:OD2	2.16	0.46
1:B:116:ASP:OD1	1:B:116:ASP:C	2.55	0.46
1:A:276[A]:ARG:NH1	1:A:276[A]:ARG:CG	2.77	0.45
1:B:33:ASP:OD2	1:B:224:GLU:OE2	2.34	0.45
1:B:406:LEU:HD13	1:B:414:LEU:CD1	2.47	0.45
1:B:102:LEU:CD1	1:B:109:VAL:HG22	2.46	0.45
1:B:347[B]:CYS:HA	1:B:366:ARG:O	2.17	0.45
1:B:351:PRO:HA	1:B:354:GLN:OE1	2.17	0.44
1:A:319:ARG:HG2	8:A:943:HOH:O	2.18	0.44
1:A:175:ALA:O	1:A:204:PHE:HA	2.17	0.43
1:B:102:LEU:HD11	1:B:109:VAL:HG22	1.99	0.43
1:B:107:PRO:CA	1:B:171:ASP:OD2	2.65	0.43
1:B:403:ARG:HG2	8:B:788:HOH:O	2.20	0.42
1:B:102:LEU:HD23	1:B:171:ASP:HB2	2.01	0.42
1:B:212:ILE:HA	1:B:217:SER:OG	2.19	0.41
1:B:182:ILE:HG23	1:B:184:TYR:CZ	2.54	0.41
1:A:85:VAL:HG21	8:B:857:HOH:O	2.20	0.41

Continued on next page...

Continued from previous page...

Atom-1	Atom-2	Interatomic distance (Å)	Clash overlap (Å)
1:A:397:PHE:CE2	1:A:402:GLY:HA3	2.56	0.41
1:A:72:PHE:CD1	3:A:502:SAH:H2'	2.56	0.41
1:A:92:LYS:HE2	1:B:85:VAL:HG12	2.03	0.40

All (1) symmetry-related close contacts are listed below. The label for Atom-2 includes the symmetry operator and encoded unit-cell translations to be applied.

Atom-1	Atom-2	Interatomic distance (Å)	Clash overlap (Å)
8:B:856:HOH:O	8:B:895:HOH:O[1_455]	2.03	0.17

5.3 Torsion angles ⓘ

5.3.1 Protein backbone ⓘ

In the following table, the Percentiles column shows the percent Ramachandran outliers of the chain as a percentile score with respect to all X-ray entries followed by that with respect to entries of similar resolution.

The Analysed column shows the number of residues for which the backbone conformation was analysed, and the total number of residues.

Mol	Chain	Analysed	Favoured	Allowed	Outliers	Percentiles	
1	A	408/416 (98%)	404 (99%)	4 (1%)	0	100	100
1	B	401/416 (96%)	390 (97%)	9 (2%)	2 (0%)	29	11
All	All	809/832 (97%)	794 (98%)	13 (2%)	2 (0%)	47	26

All (2) Ramachandran outliers are listed below:

Mol	Chain	Res	Type
1	B	197	GLY
1	B	352	GLY

5.3.2 Protein sidechains ⓘ

In the following table, the Percentiles column shows the percent sidechain outliers of the chain as a percentile score with respect to all X-ray entries followed by that with respect to entries of similar resolution.

The Analysed column shows the number of residues for which the sidechain conformation was

analysed, and the total number of residues.

Mol	Chain	Analysed	Rotameric	Outliers	Percentiles	
1	A	330/332 (99%)	329 (100%)	1 (0%)	92	87
1	B	324/332 (98%)	312 (96%)	12 (4%)	34	11
All	All	654/664 (98%)	641 (98%)	13 (2%)	55	31

All (13) residues with a non-rotameric sidechain are listed below:

Mol	Chain	Res	Type
1	A	14	ARG
1	B	14	ARG
1	B	34	ARG
1	B	42	ASP
1	B	68	ARG
1	B	85	VAL
1	B	109	VAL
1	B	118	ILE
1	B	121	ARG
1	B	156	GLU
1	B	283	GLU
1	B	303	ARG
1	B	366	ARG

Some sidechains can be flipped to improve hydrogen bonding and reduce clashes. There are no such sidechains identified.

5.3.3 RNA ⓘ

There are no RNA molecules in this entry.

5.4 Non-standard residues in protein, DNA, RNA chains ⓘ

There are no non-standard protein/DNA/RNA residues in this entry.

5.5 Carbohydrates ⓘ

There are no carbohydrates in this entry.

5.6 Ligand geometry

Of 13 ligands modelled in this entry, 5 are monoatomic - leaving 8 for Mogul analysis.

In the following table, the Counts columns list the number of bonds (or angles) for which Mogul statistics could be retrieved, the number of bonds (or angles) that are observed in the model and the number of bonds (or angles) that are defined in the Chemical Component Dictionary. The Link column lists molecule types, if any, to which the group is linked. The Z score for a bond length (or angle) is the number of standard deviations the observed value is removed from the expected value. A bond length (or angle) with $|Z| > 2$ is considered an outlier worth inspection. RMSZ is the root-mean-square of all Z scores of the bond lengths (or angles).

Mol	Type	Chain	Res	Link	Bond lengths			Bond angles		
					Counts	RMSZ	# Z > 2	Counts	RMSZ	# Z > 2
3	SAH	B	502	-	21,28,28	1.08	2 (9%)	20,40,40	1.91	7 (35%)
5	EDO	B	504	-	3,3,3	0.54	0	2,2,2	0.41	0
5	EDO	A	504	-	3,3,3	0.52	0	2,2,2	0.09	0
4	JHZ	A	503	-	27,37,37	1.27	2 (7%)	34,58,58	2.25	7 (20%)
5	EDO	A	506	-	3,3,3	0.52	0	2,2,2	0.19	0
3	SAH	A	502	-	21,28,28	1.22	2 (9%)	20,40,40	2.54	9 (45%)
5	EDO	A	505	-	3,3,3	0.45	0	2,2,2	0.55	0
4	JHZ	B	503	-	27,37,37	1.12	1 (3%)	34,58,58	1.75	7 (20%)

In the following table, the Chirals column lists the number of chiral outliers, the number of chiral centers analysed, the number of these observed in the model and the number defined in the Chemical Component Dictionary. Similar counts are reported in the Torsion and Rings columns. '-' means no outliers of that kind were identified.

Mol	Type	Chain	Res	Link	Chirals	Torsions	Rings
3	SAH	B	502	-	-	0/7/31/31	0/3/3/3
5	EDO	B	504	-	-	1/1/1/1	-
5	EDO	A	504	-	-	1/1/1/1	-
4	JHZ	A	503	-	-	3/18/52/52	0/3/3/3
5	EDO	A	506	-	-	0/1/1/1	-
3	SAH	A	502	-	-	2/7/31/31	0/3/3/3
5	EDO	A	505	-	-	0/1/1/1	-
4	JHZ	B	503	-	-	4/18/52/52	0/3/3/3

All (7) bond length outliers are listed below:

Mol	Chain	Res	Type	Atoms	Z	Observed(Å)	Ideal(Å)
4	B	503	JHZ	O41-C41	4.47	1.35	1.24
4	A	503	JHZ	O41-C41	4.25	1.35	1.24
3	A	502	SAH	C4-N3	-2.50	1.32	1.35

Continued on next page...

Continued from previous page...

Mol	Chain	Res	Type	Atoms	Z	Observed(Å)	Ideal(Å)
3	B	502	SAH	O4'-C1'	2.50	1.44	1.41
4	A	503	JHZ	C3-C4	-2.37	1.49	1.55
3	B	502	SAH	C5-C4	2.11	1.46	1.40
3	A	502	SAH	C5-C4	2.06	1.46	1.40

All (30) bond angle outliers are listed below:

Mol	Chain	Res	Type	Atoms	Z	Observed(°)	Ideal(°)
4	A	503	JHZ	O5-C1-O1	-8.05	100.84	111.36
4	A	503	JHZ	O1-C1-C2	5.72	114.79	107.11
3	A	502	SAH	N3-C2-N1	-5.54	120.01	128.68
3	A	502	SAH	C2-N1-C6	5.39	127.97	118.75
4	B	503	JHZ	C41-N31-C21	5.11	119.45	115.14
3	B	502	SAH	N3-C2-N1	-4.95	120.94	128.68
4	A	503	JHZ	O4-C4-C3	-4.22	115.04	121.54
4	B	503	JHZ	C1-O5-C5	-4.13	109.33	113.83
4	B	503	JHZ	OPP-P2-O1	-3.78	94.86	102.48
3	A	502	SAH	N6-C6-N1	3.40	125.62	118.57
4	A	503	JHZ	O4-C4-C5	3.29	125.93	120.02
3	B	502	SAH	C4-C5-N7	-3.24	106.02	109.40
3	A	502	SAH	C1'-N9-C4	-3.22	120.98	126.64
3	A	502	SAH	C5-C6-N1	-3.22	113.05	120.35
3	A	502	SAH	O2'-C2'-C3'	3.18	122.12	111.82
4	A	503	JHZ	O4X-C4X-C5X	-2.90	99.84	109.37
4	B	503	JHZ	O4-C4-C5	2.75	124.95	120.02
4	B	503	JHZ	O4-C4-C3	-2.73	117.33	121.54
3	B	502	SAH	O4'-C4'-C3'	2.70	110.45	105.11
4	A	503	JHZ	O5-C5-C6	-2.66	101.69	109.53
3	B	502	SAH	C2-N1-C6	2.61	123.22	118.75
4	B	503	JHZ	O3P-P2-O4P	2.59	125.05	112.24
3	A	502	SAH	O3'-C3'-C4'	2.51	118.31	111.05
4	A	503	JHZ	C51-C61-N11	-2.31	119.71	122.19
3	A	502	SAH	C4-C5-N7	-2.29	107.01	109.40
3	B	502	SAH	O4'-C1'-C2'	-2.14	103.80	106.93
4	B	503	JHZ	O1P-P-O5X	2.12	117.59	107.75
3	B	502	SAH	C5-C6-N6	2.08	123.51	120.35
3	B	502	SAH	C5'-SD-CG	2.02	108.34	102.27
3	A	502	SAH	C4'-C5'-SD	-2.00	106.58	113.78

There are no chirality outliers.

All (11) torsion outliers are listed below:

Mol	Chain	Res	Type	Atoms
4	A	503	JHZ	O4X-C1X-N11-C61
4	B	503	JHZ	O4X-C1X-N11-C61
5	A	504	EDO	O1-C1-C2-O2
4	A	503	JHZ	P2-OPP-P-O5X
4	B	503	JHZ	P2-OPP-P-O5X
4	B	503	JHZ	O4X-C4X-C5X-O5X
5	B	504	EDO	O1-C1-C2-O2
3	A	502	SAH	CB-CG-SD-C5'
3	A	502	SAH	C-CA-CB-CG
4	A	503	JHZ	O4X-C4X-C5X-O5X
4	B	503	JHZ	C3X-C4X-C5X-O5X

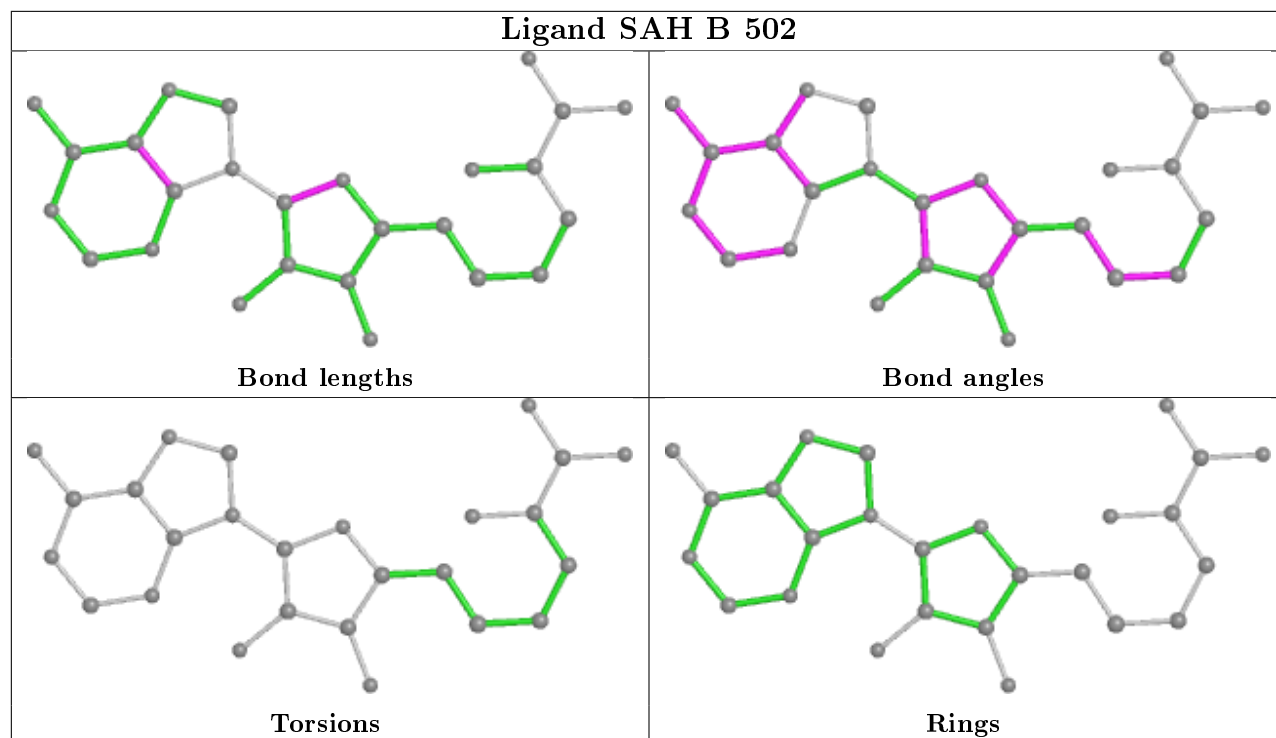
There are no ring outliers.

2 monomers are involved in 2 short contacts:

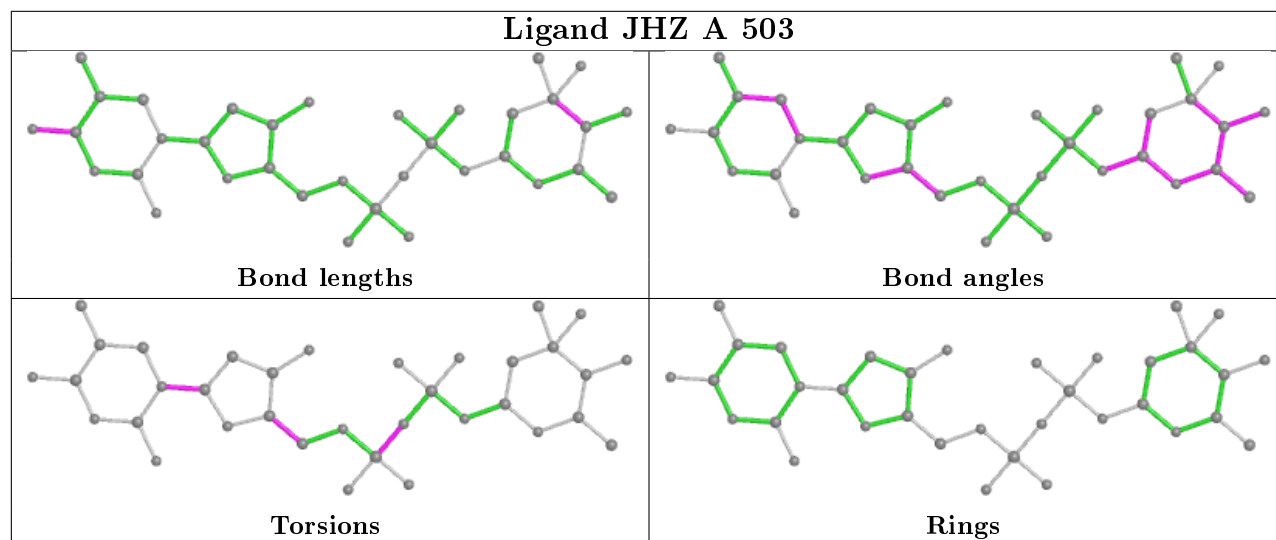
Mol	Chain	Res	Type	Clashes	Symm-Clashes
3	A	502	SAH	1	0
4	B	503	JHZ	1	0

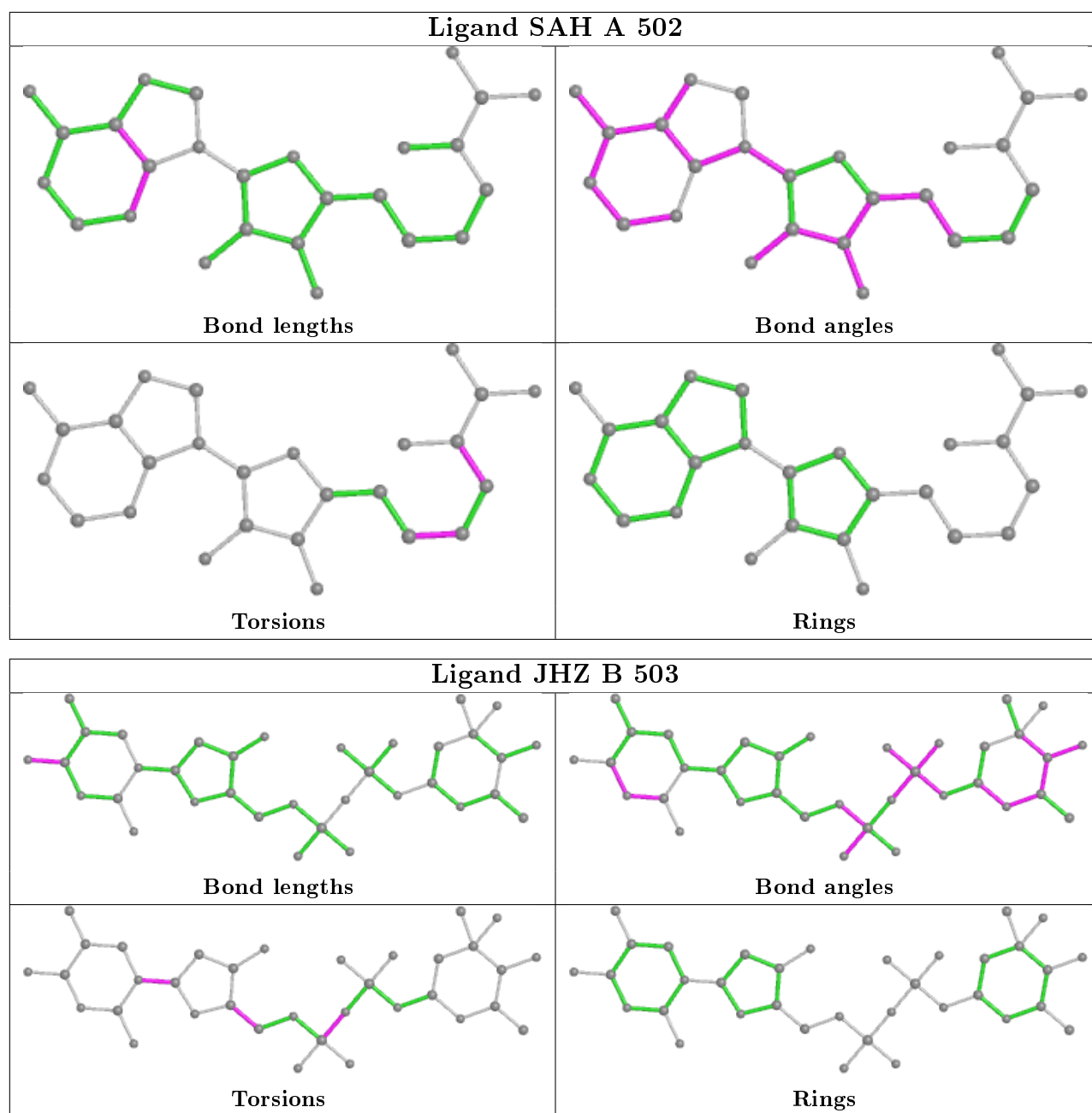
The following is a two-dimensional graphical depiction of Mogul quality analysis of bond lengths, bond angles, torsion angles, and ring geometry for all instances of the Ligand of Interest. In addition, ligands with molecular weight > 250 and outliers as shown on the validation Tables will also be included. For torsion angles, if less than 5% of the Mogul distribution of torsion angles is within 10 degrees of the torsion angle in question, then that torsion angle is considered an outlier. Any bond that is central to one or more torsion angles identified as an outlier by Mogul will be highlighted in the graph. For rings, the root-mean-square deviation (RMSD) between the ring in question and similar rings identified by Mogul is calculated over all ring torsion angles. If the average RMSD is greater than 60 degrees and the minimal RMSD between the ring in question and any Mogul-identified rings is also greater than 60 degrees, then that ring is considered an outlier. The outliers are highlighted in purple. The color gray indicates Mogul did not find sufficient equivalents in the CSD to analyse the geometry.

Ligand SAH B 502



Ligand JHZ A 503





5.7 Other polymers [i](#)

There are no such residues in this entry.

5.8 Polymer linkage issues [i](#)

There are no chain breaks in this entry.

6 Fit of model and data [i](#)

6.1 Protein, DNA and RNA chains [i](#)

In the following table, the column labelled ‘#RSRZ> 2’ contains the number (and percentage) of RSRZ outliers, followed by percent RSRZ outliers for the chain as percentile scores relative to all X-ray entries and entries of similar resolution. The OWAB column contains the minimum, median, 95th percentile and maximum values of the occupancy-weighted average B-factor per residue. The column labelled ‘Q< 0.9’ lists the number of (and percentage) of residues with an average occupancy less than 0.9.

Mol	Chain	Analysed	<RSRZ>	#RSRZ>2	OWAB(Å ²)	Q<0.9
1	A	405/416 (97%)	-0.31	2 (0%) 91 90	6, 13, 28, 68	0
1	B	402/416 (96%)	0.38	17 (4%) 36 33	12, 26, 51, 67	0
All	All	807/832 (96%)	0.04	19 (2%) 59 56	6, 19, 46, 68	0

All (19) RSRZ outliers are listed below:

Mol	Chain	Res	Type	RSRZ
1	B	105	ALA	4.6
1	B	36	LEU	4.2
1	A	10	PRO	4.0
1	B	10	PRO	3.6
1	B	42	ASP	3.2
1	B	83	SER	3.1
1	B	77	PRO	3.1
1	B	78	TYR	3.0
1	B	72	PHE	2.9
1	B	355	HIS	2.8
1	B	43	GLY	2.8
1	A	43	GLY	2.7
1	B	162	ALA	2.6
1	B	165	GLU	2.6
1	B	11	ALA	2.5
1	B	38	PRO	2.3
1	B	198	PRO	2.3
1	B	228	LEU	2.2
1	B	414	LEU	2.2

6.2 Non-standard residues in protein, DNA, RNA chains [i](#)

There are no non-standard protein/DNA/RNA residues in this entry.

6.3 Carbohydrates ⓘ

There are no carbohydrates in this entry.

6.4 Ligands ⓘ

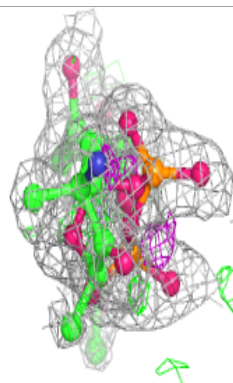
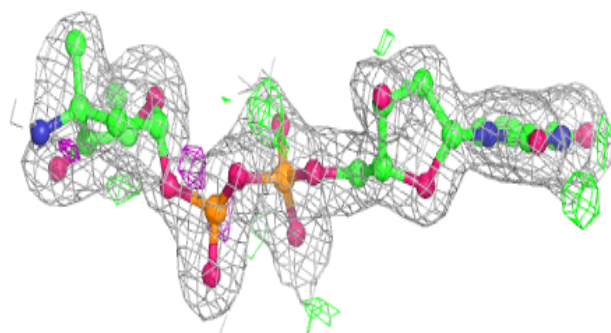
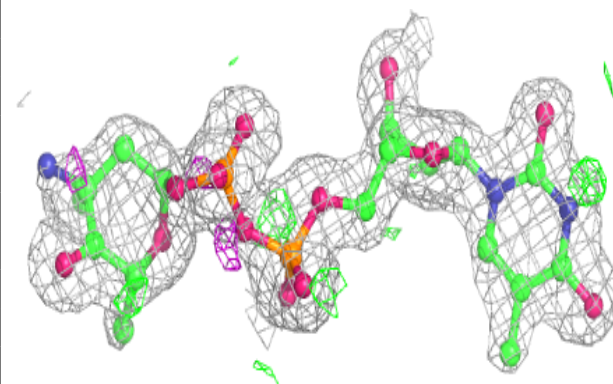
In the following table, the Atoms column lists the number of modelled atoms in the group and the number defined in the chemical component dictionary. The B-factors column lists the minimum, median, 95th percentile and maximum values of B factors of atoms in the group. The column labelled 'Q< 0.9' lists the number of atoms with occupancy less than 0.9.

Mol	Type	Chain	Res	Atoms	RSCC	RSR	B-factors(\AA^2)	Q<0.9
5	EDO	A	506	4/4	0.80	0.13	39,39,42,42	0
5	EDO	B	504	4/4	0.86	0.19	28,28,34,36	0
5	EDO	A	504	4/4	0.88	0.22	38,42,42,42	0
4	JHZ	B	503	35/35	0.93	0.11	20,30,36,40	0
3	SAH	B	502	26/26	0.94	0.10	16,20,22,24	0
7	CL	A	509	1/1	0.94	0.06	40,40,40,40	0
5	EDO	A	505	4/4	0.94	0.08	20,24,27,29	0
6	MG	A	508	1/1	0.94	0.14	34,34,34,34	0
3	SAH	A	502	26/26	0.98	0.10	6,8,10,12	0
6	MG	A	507	1/1	0.98	0.08	26,26,26,26	0
2	ZN	B	501	1/1	0.99	0.03	22,22,22,22	0
2	ZN	A	501	1/1	0.99	0.03	17,17,17,17	0
4	JHZ	A	503	35/35	0.99	0.08	6,10,14,17	0

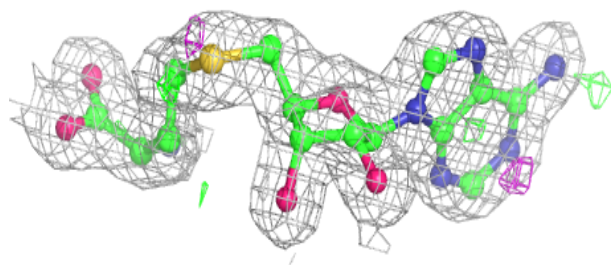
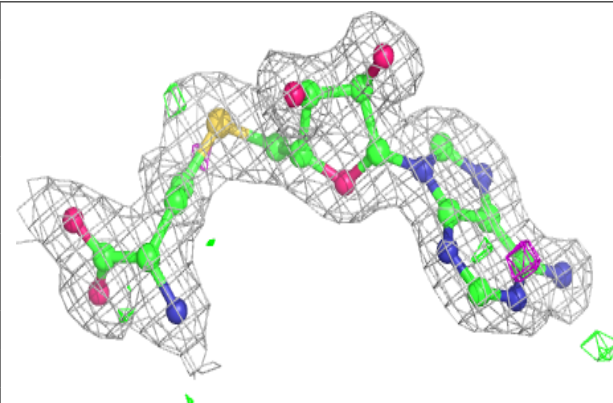
The following is a graphical depiction of the model fit to experimental electron density of all instances of the Ligand of Interest. In addition, ligands with molecular weight > 250 and outliers as shown on the geometry validation Tables will also be included. Each fit is shown from different orientation to approximate a three-dimensional view.

Electron density around JHZ B 503:

$2mF_o-DF_c$ (at 0.7 rmsd) in gray
 mF_o-DF_c (at 3 rmsd) in purple (negative)
and green (positive)

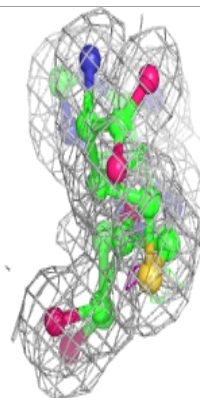
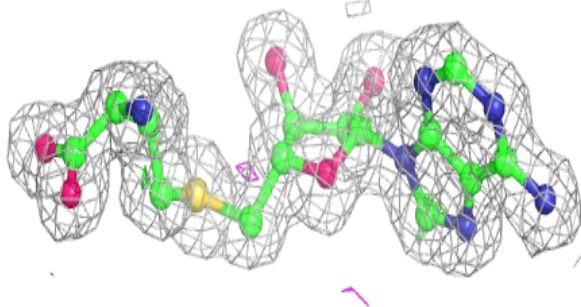
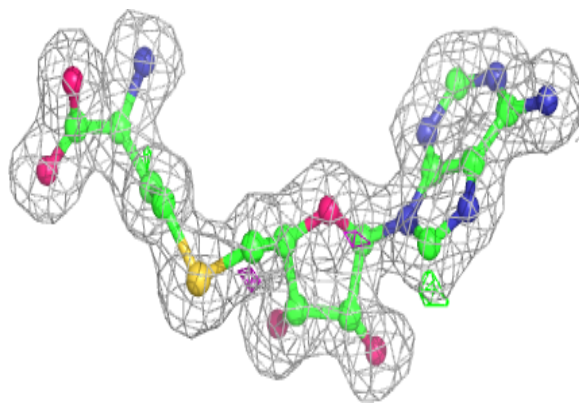
**Electron density around SAH B 502:**

$2mF_o-DF_c$ (at 0.7 rmsd) in gray
 mF_o-DF_c (at 3 rmsd) in purple (negative)
and green (positive)

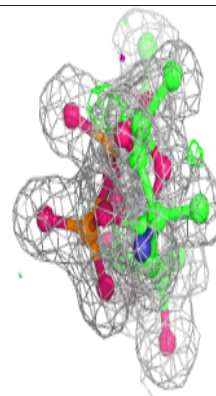
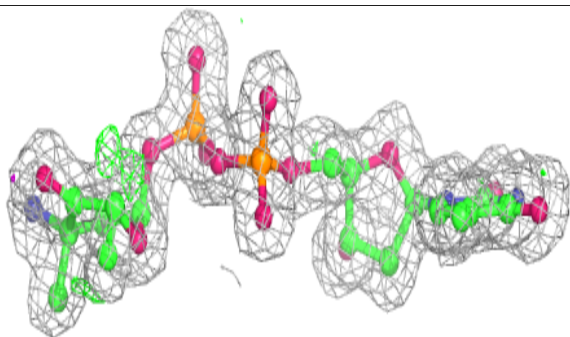
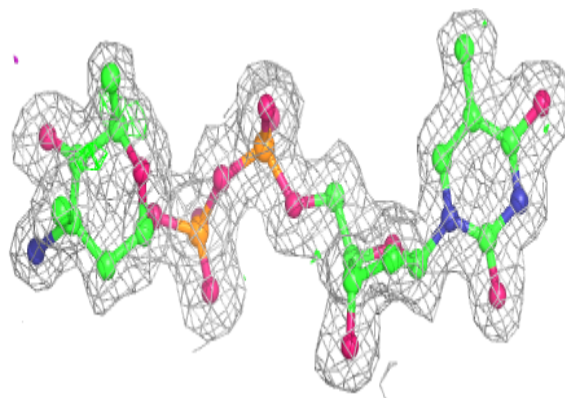


Electron density around SAH A 502:

$2mF_o-DF_c$ (at 0.7 rmsd) in gray
 mF_o-DF_c (at 3 rmsd) in purple (negative)
and green (positive)

**Electron density around JHZ A 503:**

$2mF_o-DF_c$ (at 0.7 rmsd) in gray
 mF_o-DF_c (at 3 rmsd) in purple (negative)
and green (positive)



6.5 Other polymers

There are no such residues in this entry.