



Full wwPDB X-ray Structure Validation Report ⓘ

Aug 9, 2020 – 05:51 AM BST

PDB ID : 6T8V
Title : Complement factor B in complex with (S)-5,7-Dimethyl-4-((2-phenylpiperidin-1-yl)methyl)-1H-indole
Authors : Mainolfi, N.; Ehara, T.; Karki, R.G.; Anderson, K.; Mac Sweeney, A.; Wiesmann, C.; Adams, C.; Mainolfi, N.; Liao, S.-M.; Argikar, U.A.; Jendza, K.; Zhang, C.; Powers, J.; Klosowski, D.W.; Crowley, M.; Kawanami, T.; Ding, J.; April, M.; Forster, C.; Serrano-Wu, M.; Capparelli, M.; Ramqaj, R.; Solovay, C.; Cumin, F.; Smith, T.M.; Ferrara, L.; Lee, W.; Long, D.; Prentiss, M.; De Erkenez, A.; Yang, L.; Fang, L.; Sellner, H.; Sirockin, F.; Valeur, E.; Erbel, P.; Ramage, P.; Gerhartz, B.; Schubart, A.; Flohr, S.; Gradoux, N.; Feifel, R.; Vogg, B.; Wiesmann, C.; Maibaum, J.; Eder, J.; Sedrani, R.; Harrison, R.A.; Mogi, M.; Jaffee, B.D.; Adams, C.M.
Deposited on : 2019-10-25
Resolution : 2.29 Å(reported)

This is a Full wwPDB X-ray Structure Validation Report for a publicly released PDB entry.

We welcome your comments at validation@mail.wwpdb.org

A user guide is available at

<https://www.wwpdb.org/validation/2017/XrayValidationReportHelp>

with specific help available everywhere you see the ⓘ symbol.

The following versions of software and data (see [references ⓘ](#)) were used in the production of this report:

MolProbity : 4.02b-467
Mogul : 1.8.5 (274361), CSD as541be (2020)
Xtriage (Phenix) : 1.13
EDS : 2.13.1
buster-report : 1.1.7 (2018)
Percentile statistics : 20191225.v01 (using entries in the PDB archive December 25th 2019)
Refmac : 5.8.0158

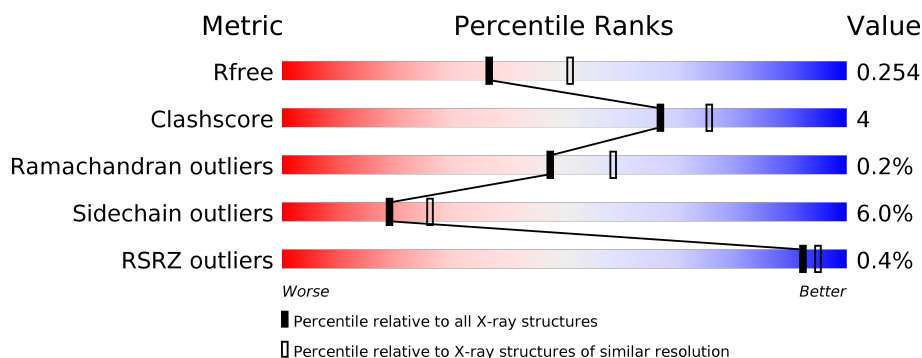
1 Overall quality at a glance

The following experimental techniques were used to determine the structure:

X-RAY DIFFRACTION

The reported resolution of this entry is 2.29 Å.

Percentile scores (ranging between 0-100) for global validation metrics of the entry are shown in the following graphic. The table shows the number of entries on which the scores are based.



Metric	Whole archive (#Entries)	Similar resolution (#Entries, resolution range(Å))
R_{free}	130704	5042 (2.30-2.30)
Clashscore	141614	5643 (2.30-2.30)
Ramachandran outliers	138981	5575 (2.30-2.30)
Sidechain outliers	138945	5575 (2.30-2.30)
RSRZ outliers	127900	4938 (2.30-2.30)

The table below summarises the geometric issues observed across the polymeric chains and their fit to the electron density. The red, orange, yellow and green segments on the lower bar indicate the fraction of residues that contain outliers for ≥ 3 , 2, 1 and 0 types of geometric quality criteria respectively. A grey segment represents the fraction of residues that are not modelled. The numeric value for each fraction is indicated below the corresponding segment, with a dot representing fractions $\leq 5\%$. The upper red bar (where present) indicates the fraction of residues that have poor fit to the electron density. The numeric value is given above the bar.

Mol	Chain	Length	Quality of chain
1	AAA	291	 88% 9% ..
1	BBB	291	 82% 11% • 5%

CCP4 : 7.0.044 (Gargrove)
 Ideal geometry (proteins) : Engh & Huber (2001)
 Ideal geometry (DNA, RNA) : Parkinson et al. (1996)
 Validation Pipeline (wwPDB-VP) : 2.13.1

2 Entry composition [i](#)

There are 5 unique types of molecules in this entry. The entry contains 4632 atoms, of which 0 are hydrogens and 0 are deuteriums.

In the tables below, the ZeroOcc column contains the number of atoms modelled with zero occupancy, the AltConf column contains the number of residues with at least one atom in alternate conformation and the Trace column contains the number of residues modelled with at most 2 atoms.

- Molecule 1 is a protein called Complement factor B.

Mol	Chain	Residues	Atoms					ZeroOcc	AltConf	Trace
1	AAA	287	Total	C	N	O	S	0	2	0
			2266	1438	396	420	12			
1	BBB	275	Total	C	N	O	S	0	5	0
			2176	1387	371	406	12			

- Molecule 2 is SULFATE ION (three-letter code: SO4) (formula: O₄S).



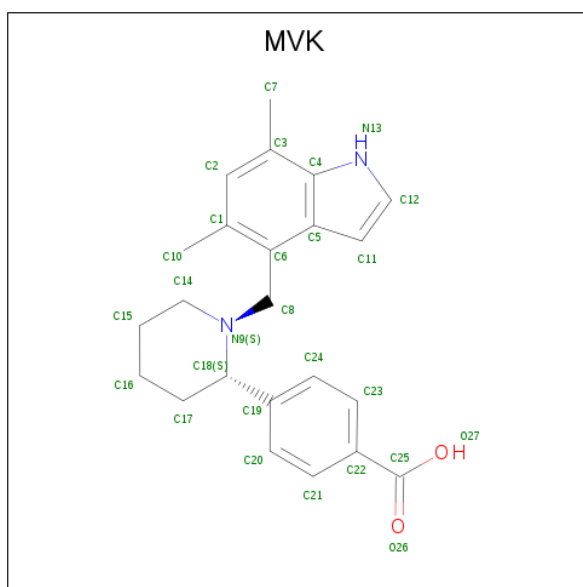
Mol	Chain	Residues	Atoms			ZeroOcc	AltConf
2	AAA	1	Total	O	S	0	0
			5	4	1		
2	AAA	1	Total	O	S	0	0
			5	4	1		
2	BBB	1	Total	O	S	0	0
			5	4	1		
2	BBB	1	Total	O	S	0	0
			5	4	1		

Continued on next page...

Continued from previous page...

Mol	Chain	Residues	Atoms			ZeroOcc	AltConf
2	BBB	1	Total	O	S	0	0
			5	4	1		

- Molecule 3 is 4-[(2 {S})-1-[(5,7-dimethyl-1 {H}-indol-4-yl)methyl]piperidin-2-yl]benzoic acid (three-letter code: MVK) (formula: C₂₃H₂₆N₂O₂) (labeled as "Ligand of Interest" by author).



Mol	Chain	Residues	Atoms				ZeroOcc	AltConf
3	AAA	1	Total	C	N	O	0	0
			27	23	2	2		
3	BBB	1	Total	C	N	O	0	0
			27	23	2	2		

- Molecule 4 is ZINC ION (three-letter code: ZN) (formula: Zn).

Mol	Chain	Residues	Atoms		ZeroOcc	AltConf
4	BBB	2	Total	Zn	0	0
			2	2		

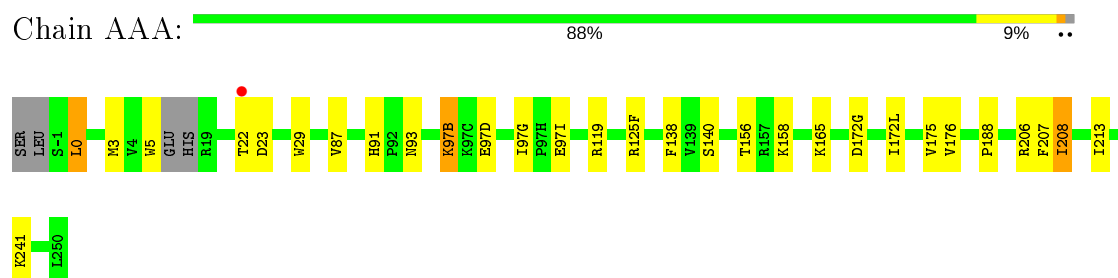
- Molecule 5 is water.

Mol	Chain	Residues	Atoms		ZeroOcc	AltConf
5	AAA	55	Total	O	0	0
			55	55		
5	BBB	54	Total	O	0	0
			54	54		

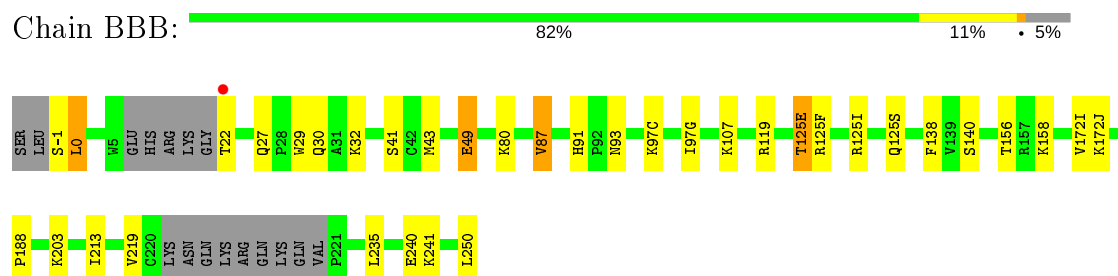
3 Residue-property plots [i](#)

These plots are drawn for all protein, RNA, DNA and oligosaccharide chains in the entry. The first graphic for a chain summarises the proportions of the various outlier classes displayed in the second graphic. The second graphic shows the sequence view annotated by issues in geometry and electron density. Residues are color-coded according to the number of geometric quality criteria for which they contain at least one outlier: green = 0, yellow = 1, orange = 2 and red = 3 or more. A red dot above a residue indicates a poor fit to the electron density ($RSRZ > 2$). Stretches of 2 or more consecutive residues without any outlier are shown as a green connector. Residues present in the sample, but not in the model, are shown in grey.

- Molecule 1: Complement factor B



- Molecule 1: Complement factor B



4 Data and refinement statistics

Property	Value	Source
Space group	P 1 21 1	Depositor
Cell constants a, b, c, α , β , γ	54.65Å 97.49Å 61.98Å 90.00° 100.47° 90.00°	Depositor
Resolution (Å)	48.74 – 2.29 48.74 – 2.29	Depositor EDS
% Data completeness (in resolution range)	99.2 (48.74-2.29) 99.2 (48.74-2.29)	Depositor EDS
R_{merge}	0.10	Depositor
R_{sym}	(Not available)	Depositor
$\langle I/\sigma(I) \rangle$ ¹	3.29 (at 2.29Å)	Xtriage
Refinement program	REFMAC 5.8.0257	Depositor
R, R_{free}	0.202 , 0.254 0.202 , 0.254	Depositor DCC
R_{free} test set	1428 reflections (5.00%)	wwPDB-VP
Wilson B-factor (Å ²)	24.4	Xtriage
Anisotropy	0.064	Xtriage
Bulk solvent k_{sol} (e/Å ³), B_{sol} (Å ²)	0.31 , 33.4	EDS
L-test for twinning ²	$\langle L \rangle = 0.49$, $\langle L^2 \rangle = 0.32$	Xtriage
Estimated twinning fraction	No twinning to report.	Xtriage
F_o, F_c correlation	0.93	EDS
Total number of atoms	4632	wwPDB-VP
Average B, all atoms (Å ²)	24.0	wwPDB-VP

Xtriage's analysis on translational NCS is as follows: *The largest off-origin peak in the Patterson function is 4.88% of the height of the origin peak. No significant pseudotranslation is detected.*

¹Intensities estimated from amplitudes.

²Theoretical values of $\langle |L| \rangle$, $\langle L^2 \rangle$ for acentric reflections are 0.5, 0.333 respectively for untwinned datasets, and 0.375, 0.2 for perfectly twinned datasets.

5 Model quality

5.1 Standard geometry

Bond lengths and bond angles in the following residue types are not validated in this section: ZN, MVK, SO4

The Z score for a bond length (or angle) is the number of standard deviations the observed value is removed from the expected value. A bond length (or angle) with $|Z| > 5$ is considered an outlier worth inspection. RMSZ is the root-mean-square of all Z scores of the bond lengths (or angles).

Mol	Chain	Bond lengths		Bond angles	
		RMSZ	$\# Z > 5$	RMSZ	$\# Z > 5$
1	AAA	0.38	0/2322	0.74	0/3143
1	BBB	0.39	0/2235	0.77	0/3024
All	All	0.38	0/4557	0.75	0/6167

There are no bond length outliers.

There are no bond angle outliers.

There are no chirality outliers.

There are no planarity outliers.

5.2 Too-close contacts

In the following table, the Non-H and H(model) columns list the number of non-hydrogen atoms and hydrogen atoms in the chain respectively. The H(added) column lists the number of hydrogen atoms added and optimized by MolProbity. The Clashes column lists the number of clashes within the asymmetric unit, whereas Symm-Clashes lists symmetry related clashes.

Mol	Chain	Non-H	H(model)	H(added)	Clashes	Symm-Clashes
1	AAA	2266	0	2237	15	0
1	BBB	2176	0	2159	21	0
2	AAA	10	0	0	0	0
2	BBB	15	0	0	0	0
3	AAA	27	0	0	0	0
3	BBB	27	0	0	0	0
4	BBB	2	0	0	0	0
5	AAA	55	0	0	0	0
5	BBB	54	0	0	1	0
All	All	4632	0	4396	35	0

The all-atom clashscore is defined as the number of clashes found per 1000 atoms (including

hydrogen atoms). The all-atom clashscore for this structure is 4.

All (35) close contacts within the same asymmetric unit are listed below, sorted by their clash magnitude.

Atom-1	Atom-2	Interatomic distance (Å)	Clash overlap (Å)
1:AAA:91:HIS:HD2	1:AAA:93:ASN:H	1.33	0.77
1:BBB:91:HIS:HD2	1:BBB:93:ASN:H	1.33	0.75
1:AAA:0:LEU:HD12	1:AAA:125(F):ARG:NH2	2.13	0.63
1:BBB:125(E):THR:HG22	1:BBB:125(S):GLN:NE2	2.13	0.63
1:BBB:97(G):ILE:CG1	1:BBB:172(I):VAL:HG21	2.29	0.62
1:AAA:208:ILE:HD12	1:AAA:208:ILE:N	2.16	0.60
1:BBB:97(G):ILE:HG12	1:BBB:172(I):VAL:HG21	1.83	0.59
1:AAA:207:PHE:C	1:AAA:208:ILE:HD12	2.25	0.56
1:BBB:30:GLN:HG3	1:BBB:43:MET:HE3	1.88	0.55
1:AAA:0:LEU:HG	1:AAA:3:MET:HE3	1.90	0.53
1:BBB:27:GLN:NE2	1:BBB:29:TRP:HE1	2.06	0.53
1:AAA:158:LYS:HB3	1:AAA:188:PRO:HG2	1.93	0.51
1:AAA:138:PHE:HB2	1:AAA:213:ILE:HD11	1.92	0.51
1:BBB:138:PHE:HB2	1:BBB:213:ILE:HD11	1.93	0.49
1:AAA:3:MET:HE2	1:AAA:206[A]:ARG:CZ	2.43	0.48
1:BBB:0:LEU:HD11	1:BBB:125(F):ARG:HD3	1.97	0.47
1:AAA:91:HIS:CD2	1:AAA:93:ASN:H	2.22	0.47
1:AAA:208:ILE:CD1	1:AAA:208:ILE:N	2.78	0.47
1:BBB:158:LYS:HB3	1:BBB:188:PRO:HG2	1.97	0.46
1:BBB:97(G):ILE:HG13	1:BBB:172(I):VAL:HG21	1.97	0.45
1:BBB:91:HIS:CD2	1:BBB:93:ASN:H	2.22	0.45
1:BBB:27:GLN:NE2	1:BBB:29:TRP:NE1	2.64	0.45
1:BBB:241:LYS:HD3	1:BBB:241:LYS:HA	1.82	0.45
1:BBB:0:LEU:HA	1:BBB:0:LEU:HD12	1.74	0.45
1:BBB:49[A]:GLU:HG2	1:BBB:49[A]:GLU:H	1.50	0.44
1:BBB:87[A]:VAL:HG13	1:BBB:107:LYS:HB3	2.00	0.44
1:BBB:235:LEU:HD23	1:BBB:235:LEU:HA	1.89	0.43
1:AAA:172(L):ILE:HA	1:AAA:172(L):ILE:HD12	1.93	0.42
1:AAA:175:VAL:HG23	1:AAA:176:VAL:HG23	2.01	0.42
1:BBB:97(C):LYS:HG3	1:BBB:97(C):LYS:HZ3	1.77	0.42
1:BBB:203:LYS:HE2	5:BBB:434:HOH:O	2.20	0.41
1:AAA:97(D):GLU:HG3	1:BBB:250:LEU:OXT	2.21	0.41
1:AAA:97(B):LYS:HB3	1:AAA:97(G):ILE:HB	2.02	0.41
1:AAA:241:LYS:HD3	1:AAA:241:LYS:HA	1.81	0.41
1:BBB:125(E):THR:HG22	1:BBB:125(S):GLN:HE21	1.81	0.40

There are no symmetry-related clashes.

5.3 Torsion angles

5.3.1 Protein backbone

In the following table, the Percentiles column shows the percent Ramachandran outliers of the chain as a percentile score with respect to all X-ray entries followed by that with respect to entries of similar resolution.

The Analysed column shows the number of residues for which the backbone conformation was analysed, and the total number of residues.

Mol	Chain	Analysed	Favoured	Allowed	Outliers	Percentiles	
1	AAA	285/291 (98%)	276 (97%)	8 (3%)	1 (0%)	34	42
1	BBB	274/291 (94%)	268 (98%)	6 (2%)	0	100	100
All	All	559/582 (96%)	544 (97%)	14 (2%)	1 (0%)	47	58

All (1) Ramachandran outliers are listed below:

Mol	Chain	Res	Type
1	AAA	23	ASP

5.3.2 Protein sidechains

In the following table, the Percentiles column shows the percent sidechain outliers of the chain as a percentile score with respect to all X-ray entries followed by that with respect to entries of similar resolution.

The Analysed column shows the number of residues for which the sidechain conformation was analysed, and the total number of residues.

Mol	Chain	Analysed	Rotameric	Outliers	Percentiles	
1	AAA	247/256 (96%)	234 (95%)	13 (5%)	22	31
1	BBB	240/256 (94%)	221 (92%)	19 (8%)	12	15
All	All	487/512 (95%)	455 (93%)	32 (7%)	19	22

All (32) residues with a non-rotameric sidechain are listed below:

Mol	Chain	Res	Type
1	AAA	0	LEU
1	AAA	5	TRP
1	AAA	22	THR
1	AAA	29	TRP
1	AAA	87	VAL

Continued on next page...

Continued from previous page...

Mol	Chain	Res	Type
1	AAA	97(B)	LYS
1	AAA	97(I)	GLU
1	AAA	119	ARG
1	AAA	140	SER
1	AAA	156	THR
1	AAA	165	LYS
1	AAA	172(G)	ASP
1	AAA	208	ILE
1	BBB	-1	SER
1	BBB	0	LEU
1	BBB	22	THR
1	BBB	32	LYS
1	BBB	41[A]	SER
1	BBB	41[B]	SER
1	BBB	49[A]	GLU
1	BBB	49[B]	GLU
1	BBB	80	LYS
1	BBB	87[A]	VAL
1	BBB	87[B]	VAL
1	BBB	119	ARG
1	BBB	125(E)	THR
1	BBB	125(I)	ARG
1	BBB	140	SER
1	BBB	156	THR
1	BBB	172(J)	LYS
1	BBB	219	VAL
1	BBB	240	GLU

Some sidechains can be flipped to improve hydrogen bonding and reduce clashes. There are no such sidechains identified.

5.3.3 RNA ⓘ

There are no RNA molecules in this entry.

5.4 Non-standard residues in protein, DNA, RNA chains ⓘ

There are no non-standard protein/DNA/RNA residues in this entry.

5.5 Carbohydrates [i](#)

There are no monosaccharides in this entry.

5.6 Ligand geometry [i](#)

Of 9 ligands modelled in this entry, 2 are monoatomic - leaving 7 for Mogul analysis.

In the following table, the Counts columns list the number of bonds (or angles) for which Mogul statistics could be retrieved, the number of bonds (or angles) that are observed in the model and the number of bonds (or angles) that are defined in the Chemical Component Dictionary. The Link column lists molecule types, if any, to which the group is linked. The Z score for a bond length (or angle) is the number of standard deviations the observed value is removed from the expected value. A bond length (or angle) with $|Z| > 2$ is considered an outlier worth inspection. RMSZ is the root-mean-square of all Z scores of the bond lengths (or angles).

Mol	Type	Chain	Res	Link	Bond lengths			Bond angles		
					Counts	RMSZ	# $ Z > 2$	Counts	RMSZ	# $ Z > 2$
2	SO4	BBB	301	-	4,4,4	0.33	0	6,6,6	0.16	0
2	SO4	AAA	301	-	4,4,4	0.34	0	6,6,6	0.13	0
2	SO4	BBB	302	-	4,4,4	0.32	0	6,6,6	0.13	0
2	SO4	BBB	303	-	4,4,4	0.36	0	6,6,6	0.11	0
3	MVK	BBB	306	-	25,30,30	2.22	9 (36%)	31,43,43	2.23	10 (32%)
3	MVK	AAA	303	-	25,30,30	2.60	4 (16%)	31,43,43	3.15	17 (54%)
2	SO4	AAA	302	-	4,4,4	0.36	0	6,6,6	0.07	0

In the following table, the Chirals column lists the number of chiral outliers, the number of chiral centers analysed, the number of these observed in the model and the number defined in the Chemical Component Dictionary. Similar counts are reported in the Torsion and Rings columns. '-' means no outliers of that kind were identified.

Mol	Type	Chain	Res	Link	Chirals	Torsions	Rings
3	MVK	BBB	306	-	-	0/8/23/23	0/4/4/4
3	MVK	AAA	303	-	-	1/8/23/23	0/4/4/4

All (13) bond length outliers are listed below:

Mol	Chain	Res	Type	Atoms	Z	Observed(Å)	Ideal(Å)
3	AAA	303	MVK	C8-C6	9.08	1.57	1.51
3	BBB	306	MVK	C8-C6	5.71	1.55	1.51
3	AAA	303	MVK	C8-N9	4.24	1.54	1.47
3	AAA	303	MVK	C22-C25	4.10	1.51	1.47
3	AAA	303	MVK	C18-N9	4.04	1.57	1.47
3	BBB	306	MVK	C2-C3	3.96	1.44	1.37

Continued on next page...

Continued from previous page...

Mol	Chain	Res	Type	Atoms	Z	Observed(Å)	Ideal(Å)
3	BBB	306	MVK	C22-C25	3.81	1.51	1.47
3	BBB	306	MVK	C8-N9	3.74	1.53	1.47
3	BBB	306	MVK	C18-N9	2.68	1.54	1.47
3	BBB	306	MVK	C1-C6	2.37	1.44	1.40
3	BBB	306	MVK	C7-C3	2.28	1.55	1.51
3	BBB	306	MVK	C2-C1	2.23	1.42	1.39
3	BBB	306	MVK	C10-C1	2.08	1.55	1.51

All (27) bond angle outliers are listed below:

Mol	Chain	Res	Type	Atoms	Z	Observed(°)	Ideal(°)
3	AAA	303	MVK	C1-C6-C5	-10.08	113.51	119.76
3	AAA	303	MVK	C8-N9-C18	6.78	122.31	111.77
3	BBB	306	MVK	C1-C6-C5	-6.69	115.61	119.76
3	AAA	303	MVK	C17-C18-N9	4.41	116.15	110.23
3	BBB	306	MVK	C8-C6-C1	4.23	126.13	119.75
3	BBB	306	MVK	C17-C18-N9	4.10	115.73	110.23
3	AAA	303	MVK	C6-C8-N9	4.06	119.86	112.84
3	BBB	306	MVK	C8-N9-C18	3.62	117.40	111.77
3	AAA	303	MVK	C7-C3-C4	3.61	123.53	120.03
3	AAA	303	MVK	C8-C6-C1	3.49	125.02	119.75
3	AAA	303	MVK	C16-C17-C18	-3.43	102.07	111.57
3	BBB	306	MVK	C11-C5-C4	-3.30	101.57	106.63
3	AAA	303	MVK	C8-N9-C14	3.19	116.64	110.77
3	AAA	303	MVK	C11-C5-C4	-3.16	101.78	106.63
3	BBB	306	MVK	C15-C16-C17	-3.15	104.99	111.42
3	AAA	303	MVK	C10-C1-C2	-3.04	113.87	119.49
3	AAA	303	MVK	C15-C16-C17	-3.04	105.22	111.42
3	AAA	303	MVK	C2-C1-C6	3.03	122.40	118.87
3	AAA	303	MVK	C24-C19-C20	2.66	121.61	118.29
3	BBB	306	MVK	C6-C8-N9	2.54	117.24	112.84
3	BBB	306	MVK	C8-N9-C14	2.38	115.16	110.77
3	BBB	306	MVK	C10-C1-C2	-2.35	115.14	119.49
3	BBB	306	MVK	C8-C6-C5	-2.26	118.24	120.96
3	AAA	303	MVK	C14-N9-C18	2.16	115.58	111.27
3	AAA	303	MVK	C21-C20-C19	-2.07	119.11	121.20
3	AAA	303	MVK	C23-C22-C25	-2.06	117.60	120.37
3	AAA	303	MVK	C23-C24-C19	-2.06	119.12	121.20

There are no chirality outliers.

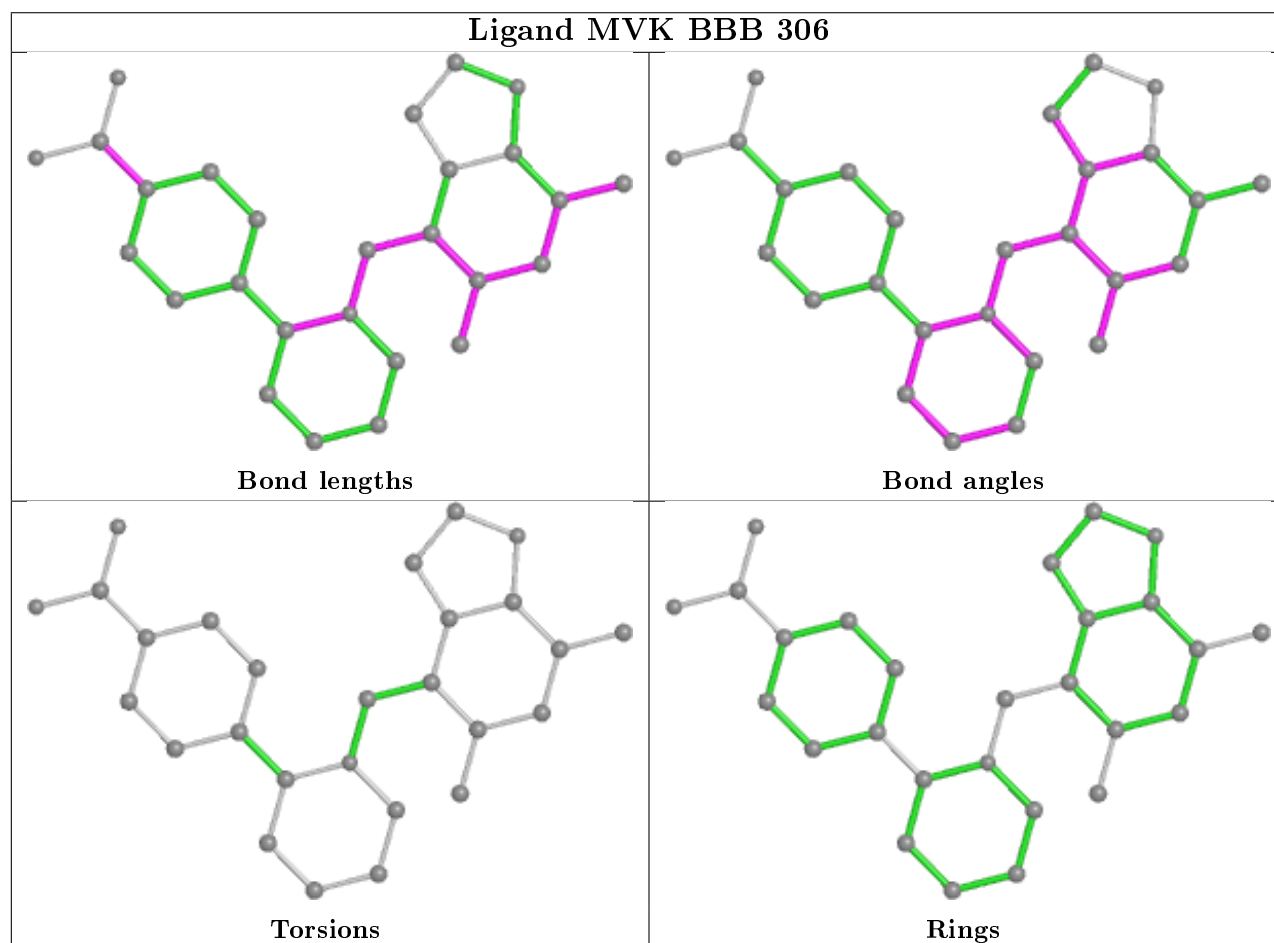
All (1) torsion outliers are listed below:

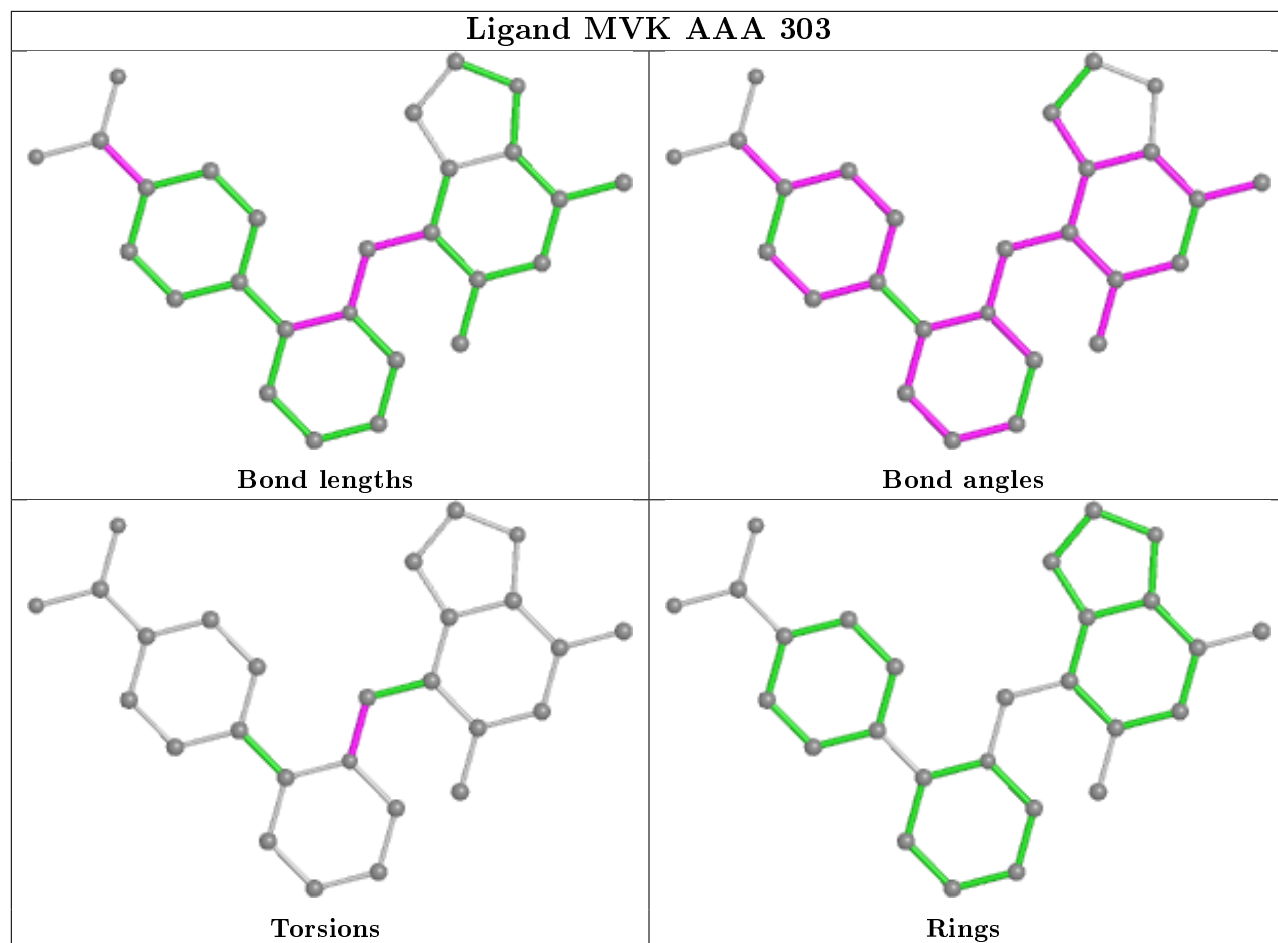
Mol	Chain	Res	Type	Atoms
3	AAA	303	MVK	C6-C8-N9-C14

There are no ring outliers.

No monomer is involved in short contacts.

The following is a two-dimensional graphical depiction of Mogul quality analysis of bond lengths, bond angles, torsion angles, and ring geometry for all instances of the Ligand of Interest. In addition, ligands with molecular weight > 250 and outliers as shown on the validation Tables will also be included. For torsion angles, if less than 5% of the Mogul distribution of torsion angles is within 10 degrees of the torsion angle in question, then that torsion angle is considered an outlier. Any bond that is central to one or more torsion angles identified as an outlier by Mogul will be highlighted in the graph. For rings, the root-mean-square deviation (RMSD) between the ring in question and similar rings identified by Mogul is calculated over all ring torsion angles. If the average RMSD is greater than 60 degrees and the minimal RMSD between the ring in question and any Mogul-identified rings is also greater than 60 degrees, then that ring is considered an outlier. The outliers are highlighted in purple. The color gray indicates Mogul did not find sufficient equivalents in the CSD to analyse the geometry.





5.7 Other polymers [i](#)

There are no such residues in this entry.

5.8 Polymer linkage issues [i](#)

There are no chain breaks in this entry.

6 Fit of model and data [i](#)

6.1 Protein, DNA and RNA chains [i](#)

In the following table, the column labelled ‘#RSRZ> 2’ contains the number (and percentage) of RSRZ outliers, followed by percent RSRZ outliers for the chain as percentile scores relative to all X-ray entries and entries of similar resolution. The OWAB column contains the minimum, median, 95th percentile and maximum values of the occupancy-weighted average B-factor per residue. The column labelled ‘Q< 0.9’ lists the number of (and percentage) of residues with an average occupancy less than 0.9.

Mol	Chain	Analysed	<RSRZ>	#RSRZ>2	OWAB(Å ²)	Q<0.9
1	AAA	287/291 (98%)	-0.20	1 (0%) 94 96	9, 21, 49, 78	0
1	BBB	275/291 (94%)	-0.18	1 (0%) 92 95	10, 22, 50, 80	0
All	All	562/582 (96%)	-0.19	2 (0%) 92 95	9, 21, 50, 80	0

All (2) RSRZ outliers are listed below:

Mol	Chain	Res	Type	RSRZ
1	BBB	22	THR	2.6
1	AAA	22	THR	2.4

6.2 Non-standard residues in protein, DNA, RNA chains [i](#)

There are no non-standard protein/DNA/RNA residues in this entry.

6.3 Carbohydrates [i](#)

There are no monosaccharides in this entry.

6.4 Ligands [i](#)

In the following table, the Atoms column lists the number of modelled atoms in the group and the number defined in the chemical component dictionary. The B-factors column lists the minimum, median, 95th percentile and maximum values of B factors of atoms in the group. The column labelled ‘Q< 0.9’ lists the number of atoms with occupancy less than 0.9.

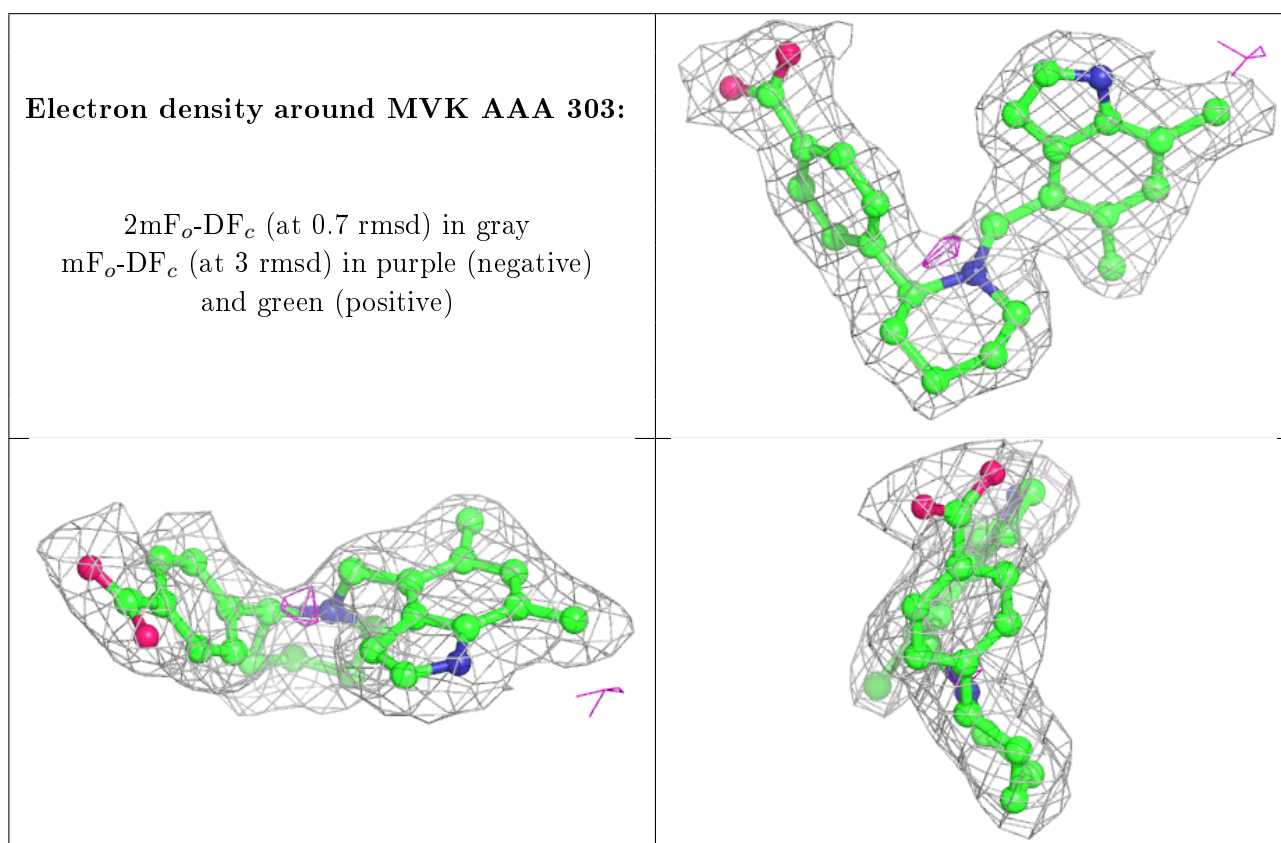
Mol	Type	Chain	Res	Atoms	RSCC	RSR	B-factors(Å ²)	Q<0.9
2	SO4	AAA	302	5/5	0.85	0.25	86,86,91,98	0
2	SO4	BBB	303	5/5	0.92	0.28	55,63,71,77	0
3	MVK	AAA	303	27/27	0.93	0.14	15,22,31,34	0

Continued on next page...

Continued from previous page...

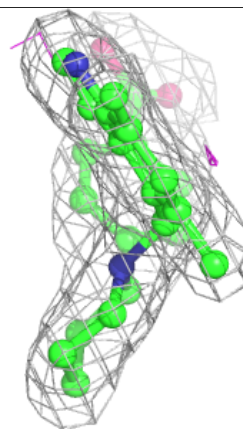
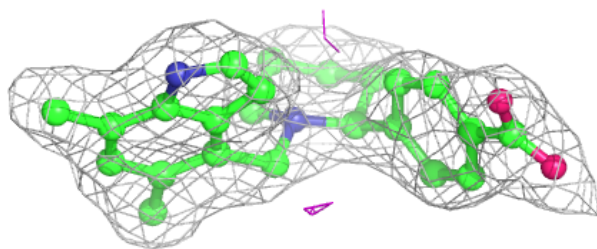
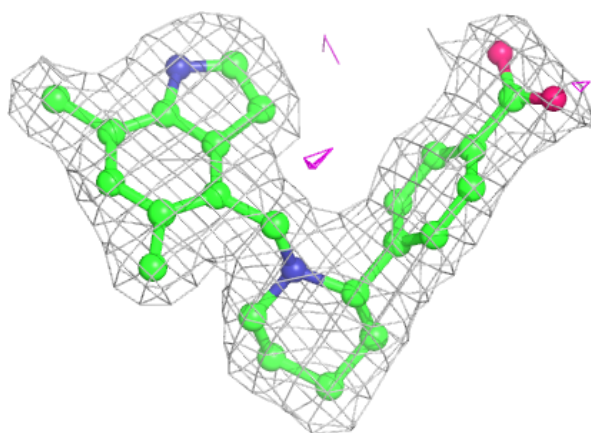
Mol	Type	Chain	Res	Atoms	RSCC	RSR	B-factors(\AA^2)	Q<0.9
2	SO4	BBB	302	5/5	0.94	0.15	50,53,54,55	0
3	MVK	BBB	306	27/27	0.94	0.14	14,23,31,35	0
2	SO4	AAA	301	5/5	0.95	0.13	58,63,67,67	0
2	SO4	BBB	301	5/5	0.96	0.14	36,36,38,40	0
4	ZN	BBB	304	1/1	0.99	0.10	18,18,18,18	0
4	ZN	BBB	305	1/1	0.99	0.10	20,20,20,20	0

The following is a graphical depiction of the model fit to experimental electron density of all instances of the Ligand of Interest. In addition, ligands with molecular weight > 250 and outliers as shown on the geometry validation Tables will also be included. Each fit is shown from different orientation to approximate a three-dimensional view.



Electron density around MVK BBB 306:

$2mF_o - DF_c$ (at 0.7 rmsd) in gray
 $mF_o - DF_c$ (at 3 rmsd) in purple (negative)
and green (positive)



6.5 Other polymers [i](#)

There are no such residues in this entry.