



# Full wwPDB X-ray Structure Validation Report ⓘ

Dec 12, 2022 – 03:08 PM EST

PDB ID : 7T9V  
Title : Crystal structure of hSTING with the agonist, SHR171032  
Authors : Chowdhury, R.; Miller, M.  
Deposited on : 2021-12-20  
Resolution : 2.68 Å(reported)

This is a Full wwPDB X-ray Structure Validation Report for a publicly released PDB entry.

We welcome your comments at [validation@mail.wwpdb.org](mailto:validation@mail.wwpdb.org)

A user guide is available at

<https://www.wwpdb.org/validation/2017/XrayValidationReportHelp>

with specific help available everywhere you see the ⓘ symbol.

The types of validation reports are described at

<http://www.wwpdb.org/validation/2017/FAQs#types>.

---

The following versions of software and data (see [references ⓘ](#)) were used in the production of this report:

MolProbity : 4.02b-467  
Mogul : 1.8.5 (274361), CSD as541be (2020)  
Xtriage (Phenix) : 1.13  
EDS : 2.31.2  
buster-report : 1.1.7 (2018)  
Percentile statistics : 20191225.v01 (using entries in the PDB archive December 25th 2019)  
Refmac : 5.8.0158  
CCP4 : 7.0.044 (Gargrove)  
Ideal geometry (proteins) : Engh & Huber (2001)  
Ideal geometry (DNA, RNA) : Parkinson et al. (1996)  
Validation Pipeline (wwPDB-VP) : 2.31.2

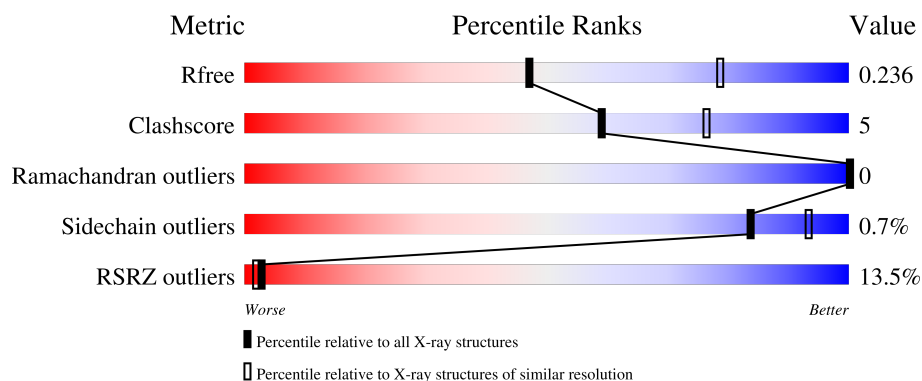
# 1 Overall quality at a glance

The following experimental techniques were used to determine the structure:

*X-RAY DIFFRACTION*

The reported resolution of this entry is 2.68 Å.

Percentile scores (ranging between 0-100) for global validation metrics of the entry are shown in the following graphic. The table shows the number of entries on which the scores are based.



Metric	Whole archive (#Entries)	Similar resolution (#Entries, resolution range(Å))
$R_{free}$	130704	3863 (2.70-2.66)
Clashscore	141614	4210 (2.70-2.66)
Ramachandran outliers	138981	4141 (2.70-2.66)
Sidechain outliers	138945	4141 (2.70-2.66)
RSRZ outliers	127900	3780 (2.70-2.66)

The table below summarises the geometric issues observed across the polymeric chains and their fit to the electron density. The red, orange, yellow and green segments of the lower bar indicate the fraction of residues that contain outliers for  $\geq 3$ , 2, 1 and 0 types of geometric quality criteria respectively. A grey segment represents the fraction of residues that are not modelled. The numeric value for each fraction is indicated below the corresponding segment, with a dot representing fractions  $\leq 5\%$ . The upper red bar (where present) indicates the fraction of residues that have poor fit to the electron density. The numeric value is given above the bar.

Mol	Chain	Length	Quality of chain
1	A	198	<div> <div>12%</div> <div>80%</div> <div>11%</div> <div>9%</div> </div>
1	B	198	<div> <div>13%</div> <div>83%</div> <div>9%</div> <div>9%</div> </div>

## 2 Entry composition

There are 4 unique types of molecules in this entry. The entry contains 3002 atoms, of which 0 are hydrogens and 0 are deuteriums.

In the tables below, the ZeroOcc column contains the number of atoms modelled with zero occupancy, the AltConf column contains the number of residues with at least one atom in alternate conformation and the Trace column contains the number of residues modelled with at most 2 atoms.

- Molecule 1 is a protein called Stimulator of interferon genes protein.

Mol	Chain	Residues	Atoms					ZeroOcc	AltConf	Trace
1	A	181	Total	C	N	O	S	0	3	0
			1444	912	250	275	7			
1	B	181	Total	C	N	O	S	0	2	0
			1438	909	249	273	7			

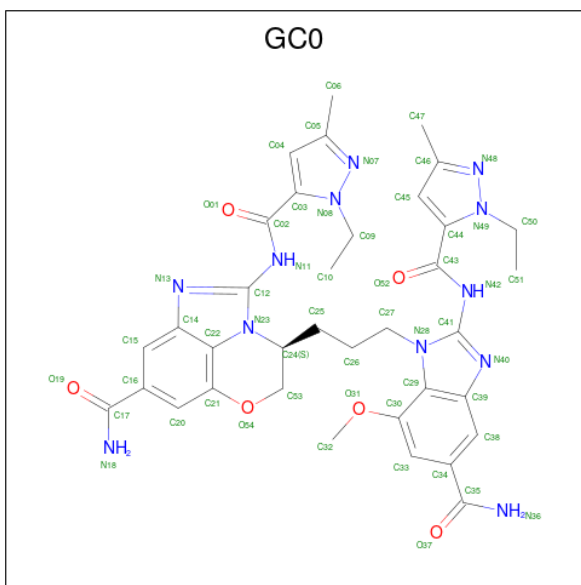
There are 2 discrepancies between the modelled and reference sequences:

Chain	Residue	Modelled	Actual	Comment	Reference
A	148	MET	-	initiating methionine	UNP Q86WV6
B	148	MET	-	initiating methionine	UNP Q86WV6

- Molecule 2 is CALCIUM ION (three-letter code: CA) (formula: Ca).

Mol	Chain	Residues	Atoms		ZeroOcc	AltConf
2	A	1	Total	Ca	0	0
			1	1		
2	B	1	Total	Ca	0	0
			1	1		

- Molecule 3 is (3S,4S)-4-(3-{5-carbamoyl-2-[(1-ethyl-3-methyl-1H-pyrazole-5-carbonyl)amino]-7-methoxy-1H-benzimidazol-1-yl}propyl)-2-[(1-ethyl-3-methyl-1H-pyrazole-5-carbonyl)amino]-4,5-dihydroimidazo[1,5,4-de][1,4]benzoxazine-8-carboxamide (three-letter code: GC0) (formula: C<sub>36</sub>H<sub>40</sub>N<sub>12</sub>O<sub>6</sub>) (labeled as "Ligand of Interest" by depositor).



Mol	Chain	Residues	Atoms				ZeroOcc	AltConf
3	A	1	Total	C	N	O	0	0
			54	36	12	6		

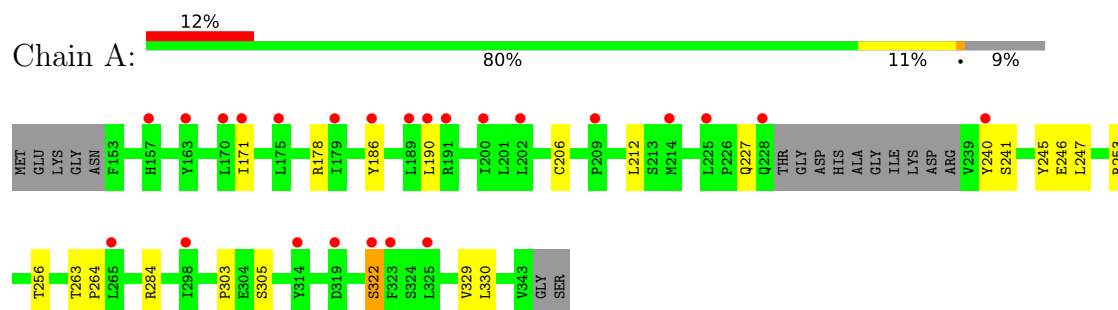
- Molecule 4 is water.

Mol	Chain	Residues	Atoms	ZeroOcc	AltConf
4	A	33	Total O 33 33	0	0
4	B	31	Total O 31 31	0	0

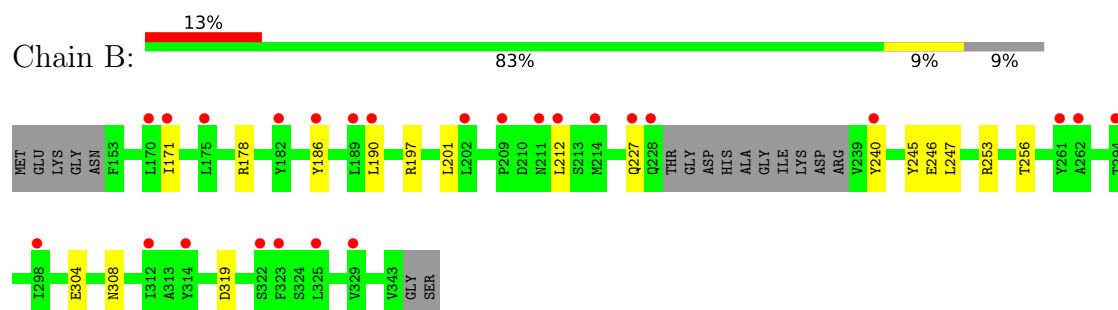
### 3 Residue-property plots [i](#)

These plots are drawn for all protein, RNA, DNA and oligosaccharide chains in the entry. The first graphic for a chain summarises the proportions of the various outlier classes displayed in the second graphic. The second graphic shows the sequence view annotated by issues in geometry and electron density. Residues are color-coded according to the number of geometric quality criteria for which they contain at least one outlier: green = 0, yellow = 1, orange = 2 and red = 3 or more. A red dot above a residue indicates a poor fit to the electron density ( $RSRZ > 2$ ). Stretches of 2 or more consecutive residues without any outlier are shown as a green connector. Residues present in the sample, but not in the model, are shown in grey.

- Molecule 1: Stimulator of interferon genes protein



- Molecule 1: Stimulator of interferon genes protein



## 4 Data and refinement statistics

Property	Value	Source
Space group	C 1 2 1	Depositor
Cell constants a, b, c, $\alpha$ , $\beta$ , $\gamma$	91.31Å 80.88Å 73.13Å 90.00° 89.99° 90.00°	Depositor
Resolution (Å)	60.55 – 2.68 60.54 – 2.68	Depositor EDS
% Data completeness (in resolution range)	94.5 (60.55-2.68) 94.6 (60.54-2.68)	Depositor EDS
$R_{merge}$	(Not available)	Depositor
$R_{sym}$	0.11	Depositor
$\langle I/\sigma(I) \rangle$ <sup>1</sup>	1.65 (at 2.69Å)	Xtriage
Refinement program	PHENIX 1.14_3260	Depositor
R, $R_{free}$	0.205 , 0.235 0.217 , 0.236	Depositor DCC
$R_{free}$ test set	739 reflections (5.18%)	wwPDB-VP
Wilson B-factor (Å <sup>2</sup> )	71.5	Xtriage
Anisotropy	0.608	Xtriage
Bulk solvent $k_{sol}$ (e/Å <sup>3</sup> ), $B_{sol}$ (Å <sup>2</sup> )	0.35 , 78.4	EDS
L-test for twinning <sup>2</sup>	$\langle  L  \rangle = 0.50$ , $\langle L^2 \rangle = 0.34$	Xtriage
Estimated twinning fraction	0.467 for -h,-k,l	Xtriage
$F_o, F_c$ correlation	0.95	EDS
Total number of atoms	3002	wwPDB-VP
Average B, all atoms (Å <sup>2</sup> )	98.0	wwPDB-VP

Xtriage's analysis on translational NCS is as follows: *The largest off-origin peak in the Patterson function is 7.80% of the height of the origin peak. No significant pseudotranslation is detected.*

<sup>1</sup>Intensities estimated from amplitudes.

<sup>2</sup>Theoretical values of  $\langle |L| \rangle$ ,  $\langle L^2 \rangle$  for acentric reflections are 0.5, 0.333 respectively for untwinned datasets, and 0.375, 0.2 for perfectly twinned datasets.

## 5 Model quality [i](#)

### 5.1 Standard geometry [i](#)

Bond lengths and bond angles in the following residue types are not validated in this section: GC0, CA

The Z score for a bond length (or angle) is the number of standard deviations the observed value is removed from the expected value. A bond length (or angle) with  $|Z| > 5$  is considered an outlier worth inspection. RMSZ is the root-mean-square of all Z scores of the bond lengths (or angles).

Mol	Chain	Bond lengths		Bond angles	
		RMSZ	$\# Z  > 5$	RMSZ	$\# Z  > 5$
1	A	0.29	0/1472	0.49	0/2001
1	B	0.29	0/1465	0.49	0/1990
All	All	0.29	0/2937	0.49	0/3991

There are no bond length outliers.

There are no bond angle outliers.

There are no chirality outliers.

There are no planarity outliers.

### 5.2 Too-close contacts [i](#)

In the following table, the Non-H and H(model) columns list the number of non-hydrogen atoms and hydrogen atoms in the chain respectively. The H(added) column lists the number of hydrogen atoms added and optimized by MolProbity. The Clashes column lists the number of clashes within the asymmetric unit, whereas Symm-Clashes lists symmetry-related clashes.

Mol	Chain	Non-H	H(model)	H(added)	Clashes	Symm-Clashes
1	A	1444	0	1378	15	0
1	B	1438	0	1381	12	0
2	A	1	0	0	0	0
2	B	1	0	0	0	0
3	A	54	0	0	1	0
4	A	33	0	0	0	0
4	B	31	0	0	0	0
All	All	3002	0	2759	27	0

The all-atom clashscore is defined as the number of clashes found per 1000 atoms (including hydrogen atoms). The all-atom clashscore for this structure is 5.

All (27) close contacts within the same asymmetric unit are listed below, sorted by their clash magnitude.

Atom-1	Atom-2	Interatomic distance (Å)	Clash overlap (Å)
1:A:186:TYR:OH	1:A:253:ARG:NH1	2.24	0.70
1:B:186:TYR:OH	1:B:253:ARG:NH1	2.26	0.69
1:A:246:GLU:OE1	1:A:253:ARG:NE	2.26	0.67
1:A:227:GLN:NE2	1:A:240:TYR:O	2.28	0.66
1:A:247:LEU:HD23	1:A:330:LEU:HG	1.79	0.64
1:B:190:LEU:HD13	1:B:253:ARG:HH12	1.66	0.60
1:B:246:GLU:OE1	1:B:253:ARG:NE	2.36	0.57
1:B:227:GLN:NE2	1:B:240:TYR:O	2.38	0.55
1:A:247:LEU:HD21	1:A:329:VAL:CG1	2.37	0.53
1:A:247:LEU:HD21	1:A:329:VAL:HB	1.89	0.53
1:A:190:LEU:HD13	1:A:253:ARG:HH12	1.74	0.53
1:A:322:SER:O	1:A:322:SER:OG	2.25	0.52
1:B:171:ILE:HD11	1:B:178:ARG:NH1	2.25	0.51
1:A:212:LEU:HD12	1:A:245:TYR:CZ	2.47	0.49
1:A:171:ILE:HD11	1:A:178:ARG:NH1	2.29	0.48
1:A:206:CYS:SG	1:A:284:ARG:HD3	2.54	0.48
1:B:304:GLU:O	1:B:308:ASN:ND2	2.45	0.48
1:B:212:LEU:HD12	1:B:245:TYR:CZ	2.48	0.48
1:A:241:SER:O	3:A:402:GC0:N18	2.46	0.48
1:B:246:GLU:OE1	1:B:253:ARG:NH2	2.49	0.46
1:A:186:TYR:OH	1:A:256:THR:HG21	2.17	0.45
1:B:247:LEU:HD22	1:B:247:LEU:N	2.35	0.41
1:A:263:THR:N	1:A:264:PRO:CD	2.84	0.41
1:B:197:ARG:HA	1:B:308:ASN:O	2.21	0.41
1:B:186:TYR:OH	1:B:256:THR:HG21	2.21	0.40
1:B:201:LEU:CD1	1:B:212:LEU:HD21	2.51	0.40
1:A:303:PRO:C	1:A:305:SER:H	2.25	0.40

There are no symmetry-related clashes.

## 5.3 Torsion angles

### 5.3.1 Protein backbone

In the following table, the Percentiles column shows the percent Ramachandran outliers of the chain as a percentile score with respect to all X-ray entries followed by that with respect to entries of similar resolution.

The Analysed column shows the number of residues for which the backbone conformation was analysed, and the total number of residues.



Mol	Chain	Analysed	Favoured	Allowed	Outliers	Percentiles	
1	A	180/198 (91%)	173 (96%)	7 (4%)	0	100	100
1	B	179/198 (90%)	171 (96%)	8 (4%)	0	100	100
All	All	359/396 (91%)	344 (96%)	15 (4%)	0	100	100

There are no Ramachandran outliers to report.

### 5.3.2 Protein sidechains ⓘ

In the following table, the Percentiles column shows the percent sidechain outliers of the chain as a percentile score with respect to all X-ray entries followed by that with respect to entries of similar resolution.

The Analysed column shows the number of residues for which the sidechain conformation was analysed, and the total number of residues.

Mol	Chain	Analysed	Rotameric	Outliers	Percentiles	
1	A	152/172 (88%)	151 (99%)	1 (1%)	84	93
1	B	151/172 (88%)	150 (99%)	1 (1%)	84	93
All	All	303/344 (88%)	301 (99%)	2 (1%)	84	93

All (2) residues with a non-rotameric sidechain are listed below:

Mol	Chain	Res	Type
1	A	322	SER
1	B	319	ASP

Sometimes sidechains can be flipped to improve hydrogen bonding and reduce clashes. There are no such sidechains identified.

### 5.3.3 RNA ⓘ

There are no RNA molecules in this entry.

## 5.4 Non-standard residues in protein, DNA, RNA chains ⓘ

There are no non-standard protein/DNA/RNA residues in this entry.

## 5.5 Carbohydrates [i](#)

There are no monosaccharides in this entry.

## 5.6 Ligand geometry [i](#)

Of 3 ligands modelled in this entry, 2 are monoatomic - leaving 1 for Mogul analysis.

In the following table, the Counts columns list the number of bonds (or angles) for which Mogul statistics could be retrieved, the number of bonds (or angles) that are observed in the model and the number of bonds (or angles) that are defined in the Chemical Component Dictionary. The Link column lists molecule types, if any, to which the group is linked. The Z score for a bond length (or angle) is the number of standard deviations the observed value is removed from the expected value. A bond length (or angle) with  $|Z| > 2$  is considered an outlier worth inspection. RMSZ is the root-mean-square of all Z scores of the bond lengths (or angles).

Mol	Type	Chain	Res	Link	Bond lengths			Bond angles		
					Counts	RMSZ	# Z  > 2	Counts	RMSZ	# Z  > 2
3	GC0	A	402	-	48,60,60	2.87	21 (43%)	55,89,89	1.86	16 (29%)

In the following table, the Chirals column lists the number of chiral outliers, the number of chiral centers analysed, the number of these observed in the model and the number defined in the Chemical Component Dictionary. Similar counts are reported in the Torsion and Rings columns. '-' means no outliers of that kind were identified.

Mol	Type	Chain	Res	Link	Chirals	Torsions	Rings
3	GC0	A	402	-	-	5/26/45/45	0/6/7/7

All (21) bond length outliers are listed below:

Mol	Chain	Res	Type	Atoms	Z	Observed(Å)	Ideal(Å)
3	A	402	GC0	C35-N36	9.36	1.50	1.33
3	A	402	GC0	C17-N18	8.01	1.48	1.33
3	A	402	GC0	C34-C35	5.51	1.58	1.50
3	A	402	GC0	O54-C21	5.33	1.43	1.37
3	A	402	GC0	C43-N42	4.96	1.48	1.35
3	A	402	GC0	C41-N42	3.65	1.49	1.36
3	A	402	GC0	C21-C22	-3.62	1.37	1.42
3	A	402	GC0	C12-N11	3.61	1.49	1.36
3	A	402	GC0	C02-N11	3.18	1.44	1.35
3	A	402	GC0	C20-C16	3.04	1.43	1.39
3	A	402	GC0	C16-C17	3.01	1.55	1.50
3	A	402	GC0	C20-C21	2.91	1.46	1.37
3	A	402	GC0	C15-C16	2.82	1.42	1.37

*Continued on next page...*

*Continued from previous page...*

Mol	Chain	Res	Type	Atoms	Z	Observed(Å)	Ideal(Å)
3	A	402	GC0	O37-C35	-2.78	1.18	1.24
3	A	402	GC0	O19-C17	-2.73	1.18	1.24
3	A	402	GC0	O01-C02	-2.72	1.17	1.23
3	A	402	GC0	O52-C43	-2.57	1.18	1.23
3	A	402	GC0	C26-C27	2.57	1.61	1.51
3	A	402	GC0	O31-C30	2.11	1.40	1.36
3	A	402	GC0	C15-C14	2.01	1.45	1.41
3	A	402	GC0	C47-C46	2.00	1.55	1.50

All (16) bond angle outliers are listed below:

Mol	Chain	Res	Type	Atoms	Z	Observed(°)	Ideal(°)
3	A	402	GC0	C09-N08-N07	4.94	124.71	116.79
3	A	402	GC0	C05-N07-N08	4.06	107.00	104.21
3	A	402	GC0	C46-N48-N49	3.94	106.92	104.21
3	A	402	GC0	C50-N49-N48	3.70	122.72	116.79
3	A	402	GC0	O54-C21-C20	3.27	122.08	117.05
3	A	402	GC0	C09-N08-C03	-3.22	125.11	128.97
3	A	402	GC0	C32-O31-C30	-3.19	113.29	117.75
3	A	402	GC0	O31-C30-C29	2.90	119.75	115.38
3	A	402	GC0	C06-C05-N07	2.84	125.73	120.07
3	A	402	GC0	O01-C02-N11	-2.33	118.39	123.71
3	A	402	GC0	C03-N08-N07	-2.26	110.18	111.93
3	A	402	GC0	O37-C35-N36	-2.06	119.65	122.58
3	A	402	GC0	O54-C53-C24	2.05	113.74	110.79
3	A	402	GC0	C44-N49-N48	-2.03	110.35	111.93
3	A	402	GC0	C47-C46-N48	2.01	124.08	120.07
3	A	402	GC0	C20-C21-C22	-2.01	117.65	120.15

There are no chirality outliers.

All (5) torsion outliers are listed below:

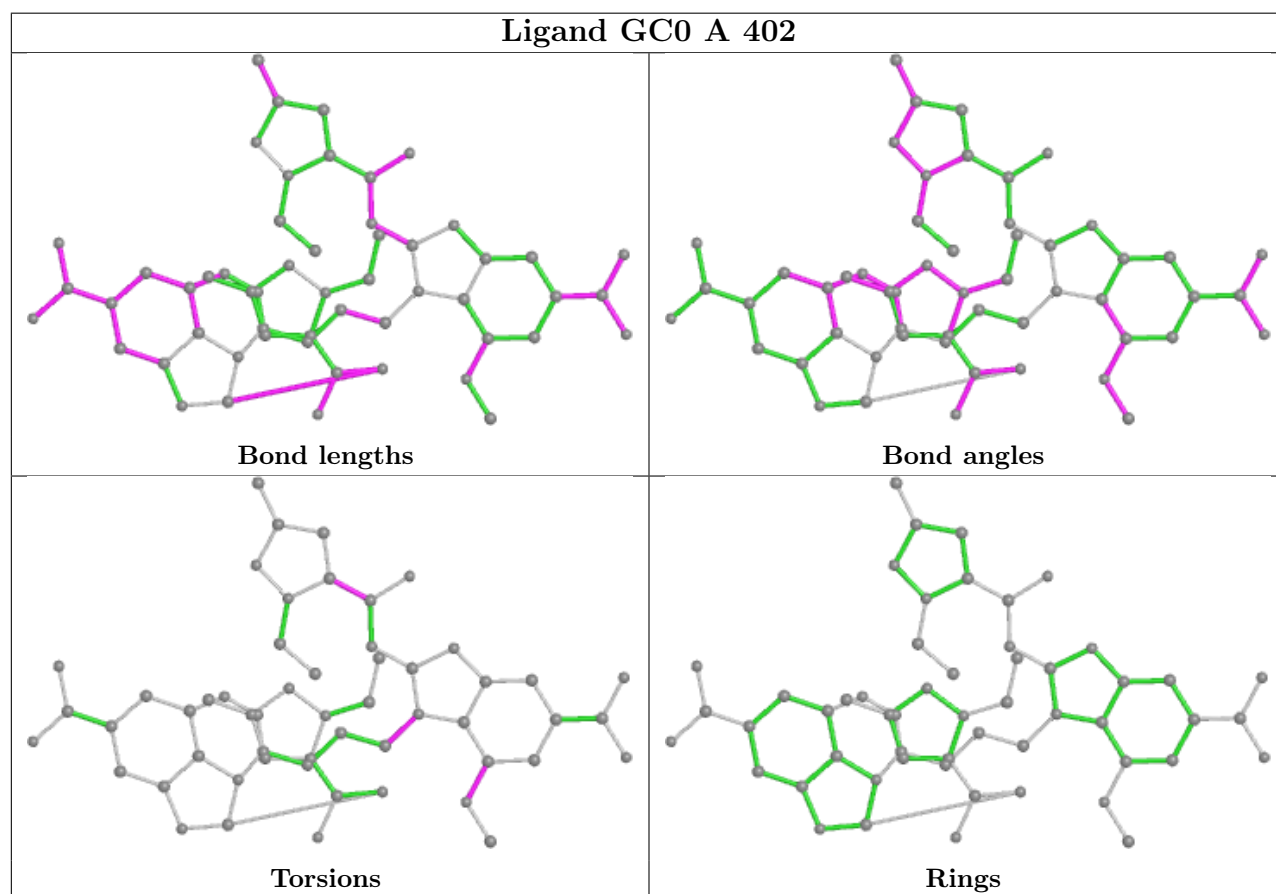
Mol	Chain	Res	Type	Atoms
3	A	402	GC0	C26-C27-N28-C29
3	A	402	GC0	C26-C27-N28-C41
3	A	402	GC0	C29-C30-O31-C32
3	A	402	GC0	C33-C30-O31-C32
3	A	402	GC0	O52-C43-C44-C45

There are no ring outliers.

1 monomer is involved in 1 short contact:

Mol	Chain	Res	Type	Clashes	Symm-Clashes
3	A	402	GC0	1	0

The following is a two-dimensional graphical depiction of Mogul quality analysis of bond lengths, bond angles, torsion angles, and ring geometry for all instances of the Ligand of Interest. In addition, ligands with molecular weight > 250 and outliers as shown on the validation Tables will also be included. For torsion angles, if less than 5% of the Mogul distribution of torsion angles is within 10 degrees of the torsion angle in question, then that torsion angle is considered an outlier. Any bond that is central to one or more torsion angles identified as an outlier by Mogul will be highlighted in the graph. For rings, the root-mean-square deviation (RMSD) between the ring in question and similar rings identified by Mogul is calculated over all ring torsion angles. If the average RMSD is greater than 60 degrees and the minimal RMSD between the ring in question and any Mogul-identified rings is also greater than 60 degrees, then that ring is considered an outlier. The outliers are highlighted in purple. The color gray indicates Mogul did not find sufficient equivalents in the CSD to analyse the geometry.



## 5.7 Other polymers ⓘ

There are no such residues in this entry.

## 5.8 Polymer linkage issues ⓘ

There are no chain breaks in this entry.

## 6 Fit of model and data

### 6.1 Protein, DNA and RNA chains

In the following table, the column labelled ‘#RSRZ> 2’ contains the number (and percentage) of RSRZ outliers, followed by percent RSRZ outliers for the chain as percentile scores relative to all X-ray entries and entries of similar resolution. The OWAB column contains the minimum, median, 95<sup>th</sup> percentile and maximum values of the occupancy-weighted average B-factor per residue. The column labelled ‘Q< 0.9’ lists the number of (and percentage) of residues with an average occupancy less than 0.9.

Mol	Chain	Analysed	<RSRZ>	#RSRZ>2		OWAB(Å <sup>2</sup> )	Q<0.9
1	A	181/198 (91%)	0.81	24 (13%)	3 2	60, 89, 146, 223	0
1	B	181/198 (91%)	0.75	25 (13%)	2 2	62, 90, 149, 195	0
All	All	362/396 (91%)	0.78	49 (13%)	3 2	60, 90, 151, 223	0

All (49) RSRZ outliers are listed below:

Mol	Chain	Res	Type	RSRZ
1	A	240	TYR	8.2
1	A	322	SER	5.1
1	B	240	TYR	5.0
1	B	322	SER	4.9
1	A	186	TYR	4.6
1	B	323	PHE	4.1
1	A	323	PHE	3.8
1	B	186	TYR	3.8
1	A	228	GLN	3.7
1	A	214	MET	3.5
1	A	171	ILE	3.5
1	B	214	MET	3.5
1	B	175	LEU	3.4
1	A	175	LEU	3.4
1	B	189	LEU	3.4
1	B	182	TYR	3.4
1	A	225	LEU	3.4
1	B	228	GLN	3.3
1	A	319	ASP	3.2
1	B	170	LEU	3.2
1	A	189	LEU	3.1
1	B	227	GLN	3.1
1	A	202	LEU	2.9
1	B	212	LEU	2.8

*Continued on next page...*

*Continued from previous page...*

Mol	Chain	Res	Type	RSRZ
1	A	190	LEU	2.8
1	B	312	ILE	2.7
1	B	325	LEU	2.7
1	B	190	LEU	2.7
1	B	261	TYR	2.7
1	A	265	LEU	2.6
1	B	202	LEU	2.6
1	B	314	TYR	2.5
1	B	209	PRO	2.5
1	A	157[A]	HIS	2.4
1	A	325	LEU	2.4
1	A	298	ILE	2.4
1	A	170	LEU	2.3
1	B	329	VAL	2.3
1	B	171	ILE	2.2
1	A	200	ILE	2.2
1	B	298	ILE	2.2
1	B	211	ASN	2.2
1	A	179	ILE	2.2
1	A	163	TYR	2.2
1	A	314	TYR	2.1
1	B	262	ALA	2.1
1	A	191	ARG	2.1
1	A	209	PRO	2.0
1	B	294	THR	2.0

## 6.2 Non-standard residues in protein, DNA, RNA chains ⓘ

There are no non-standard protein/DNA/RNA residues in this entry.

## 6.3 Carbohydrates ⓘ

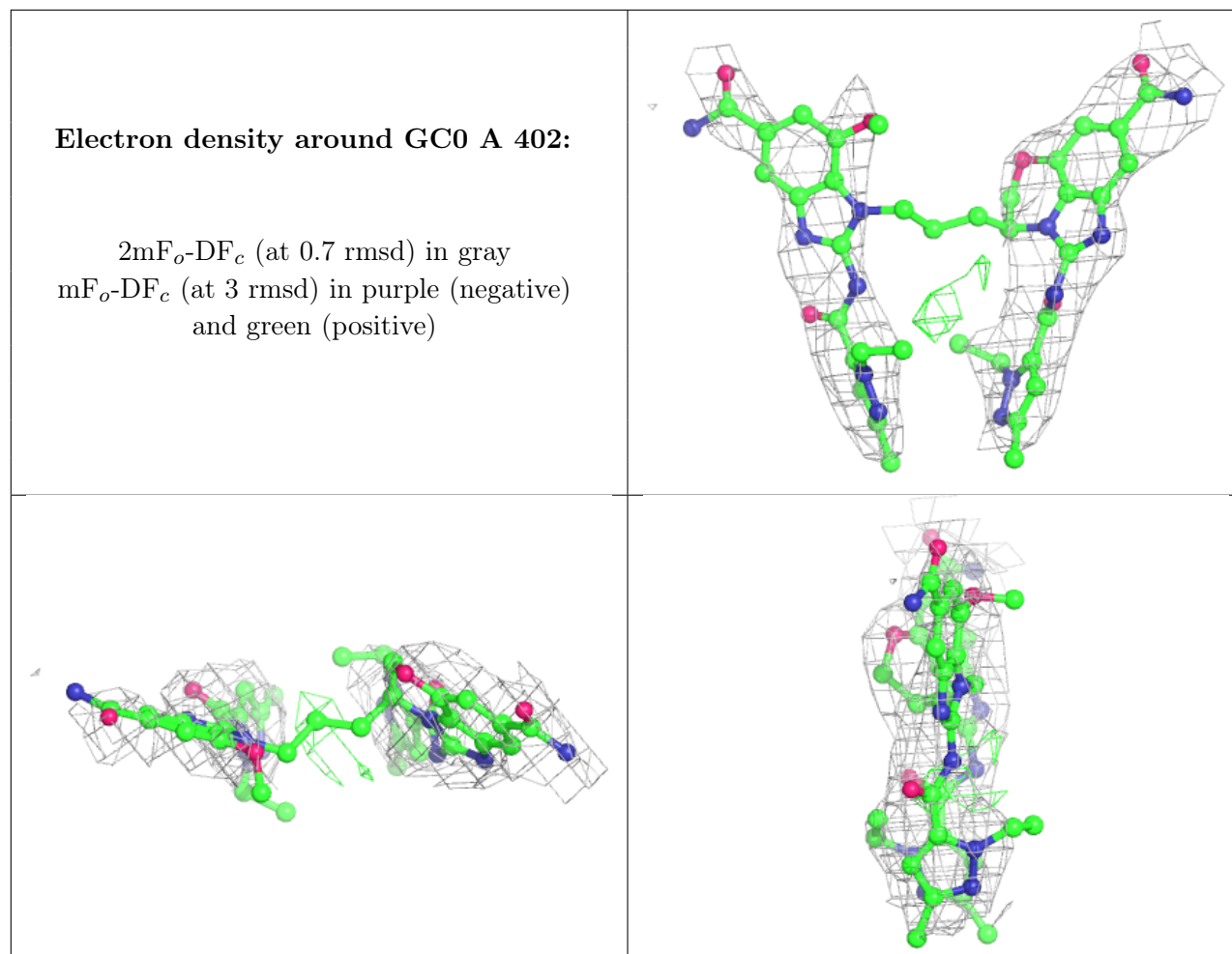
There are no monosaccharides in this entry.

## 6.4 Ligands ⓘ

In the following table, the Atoms column lists the number of modelled atoms in the group and the number defined in the chemical component dictionary. The B-factors column lists the minimum, median, 95<sup>th</sup> percentile and maximum values of B factors of atoms in the group. The column labelled 'Q< 0.9' lists the number of atoms with occupancy less than 0.9.

Mol	Type	Chain	Res	Atoms	RSCC	RSR	B-factors( $\text{\AA}^2$ )	Q<0.9
3	GC0	A	402	54/54	0.84	0.30	107,151,188,200	0
2	CA	B	401	1/1	0.94	0.18	104,104,104,104	0
2	CA	A	401	1/1	0.96	0.15	97,97,97,97	0

The following is a graphical depiction of the model fit to experimental electron density of all instances of the Ligand of Interest. In addition, ligands with molecular weight > 250 and outliers as shown on the geometry validation Tables will also be included. Each fit is shown from different orientation to approximate a three-dimensional view.



## 6.5 Other polymers [i](#)

There are no such residues in this entry.