



Full wwPDB X-ray Structure Validation Report ⓘ

May 24, 2020 – 05:15 am BST

PDB ID : 1TFZ
Title : Structural basis for herbicidal inhibitor selectivity revealed by comparison of crystal structures of plant and mammalian 4-hydroxyphenylpyruvate dioxygenases
Authors : Yang, C.; Pflugrath, J.W.; Camper, D.L.; Foster, M.L.; Pernich, D.J.; Walsh, T.A.
Deposited on : 2004-05-27
Resolution : 1.80 Å(reported)

This is a Full wwPDB X-ray Structure Validation Report for a publicly released PDB entry.

We welcome your comments at validation@mail.wwpdb.org

A user guide is available at

<https://www.wwpdb.org/validation/2017/XrayValidationReportHelp>

with specific help available everywhere you see the ⓘ symbol.

The following versions of software and data (see [references ⓘ](#)) were used in the production of this report:

MolProbity	:	4.02b-467
Mogul	:	1.8.5 (274361), CSD as541be (2020)
Xtriage (Phenix)	:	NOT EXECUTED
EDS	:	NOT EXECUTED
buster-report	:	1.1.7 (2018)
Percentile statistics	:	20191225.v01 (using entries in the PDB archive December 25th 2019)
Ideal geometry (proteins)	:	Engh & Huber (2001)
Ideal geometry (DNA, RNA)	:	Parkinson et al. (1996)
Validation Pipeline (wwPDB-VP)	:	2.11

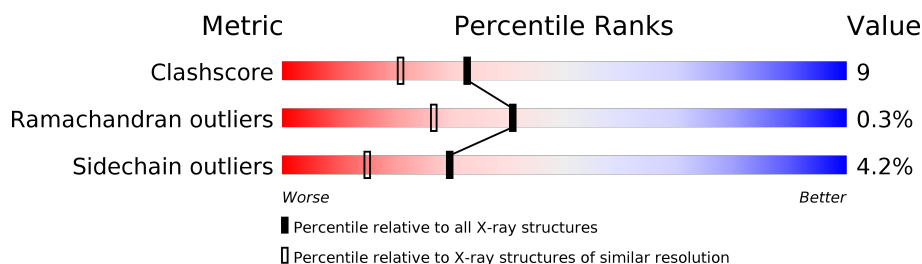
1 Overall quality at a glance

The following experimental techniques were used to determine the structure:

X-RAY DIFFRACTION

The reported resolution of this entry is 1.80 Å.

Percentile scores (ranging between 0-100) for global validation metrics of the entry are shown in the following graphic. The table shows the number of entries on which the scores are based.



Metric	Whole archive (#Entries)	Similar resolution (#Entries, resolution range(Å))
Clashscore	141614	6793 (1.80-1.80)
Ramachandran outliers	138981	6697 (1.80-1.80)
Sidechain outliers	138945	6696 (1.80-1.80)

The table below summarises the geometric issues observed across the polymeric chains and their fit to the electron density. The red, orange, yellow and green segments on the lower bar indicate the fraction of residues that contain outliers for ≥ 3 , 2, 1 and 0 types of geometric quality criteria respectively. A grey segment represents the fraction of residues that are not modelled. The numeric value for each fraction is indicated below the corresponding segment, with a dot representing fractions $\leq 5\%$.

Note EDS was not executed.

Mol	Chain	Length	Quality of chain
1	A	424	

2 Entry composition [i](#)

There are 4 unique types of molecules in this entry. The entry contains 3057 atoms, of which 0 are hydrogens and 0 are deuteriums.

In the tables below, the ZeroOcc column contains the number of atoms modelled with zero occupancy, the AltConf column contains the number of residues with at least one atom in alternate conformation and the Trace column contains the number of residues modelled with at most 2 atoms.

- Molecule 1 is a protein called 4-hydroxyphenylpyruvate dioxygenase.

Mol	Chain	Residues	Atoms					ZeroOcc	AltConf	Trace
1	A	364	Total	C	N	O	S	0	2	0
			2823	1798	481	531	13			

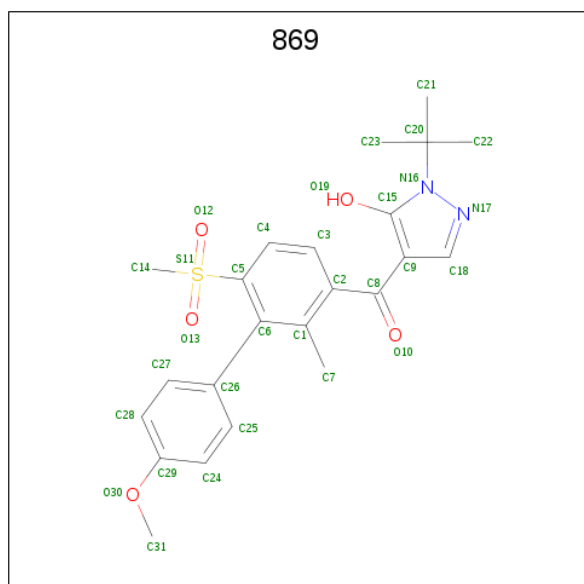
There is a discrepancy between the modelled and reference sequences:

Chain	Residue	Modelled	Actual	Comment	Reference
A	1	MET	-	INITIATING METHIONINE	UNP P93836

- Molecule 2 is FE (III) ION (three-letter code: FE) (formula: Fe).

Mol	Chain	Residues	Atoms		ZeroOcc	AltConf
2	A	1	Total	Fe	0	0
			1	1		

- Molecule 3 is (1-TERT-BUTYL-5-HYDROXY-1H-PYRAZOL-4-YL)[6-(METHYLSULFONYL)-4'-METHOXY-2-METHYL-1,1'-BIPHENYL-3-YL]METHANONE (three-letter code: 869) (formula: C₂₃H₂₆N₂O₅S).



Mol	Chain	Residues	Atoms					ZeroOcc	AltConf
3	A	1	Total	C	N	O	S	0	0
			31	23	2	5	1		

- Molecule 4 is water.

Mol	Chain	Residues	Atoms		ZeroOcc	AltConf
4	A	202	Total	O	0	0
			202	202		

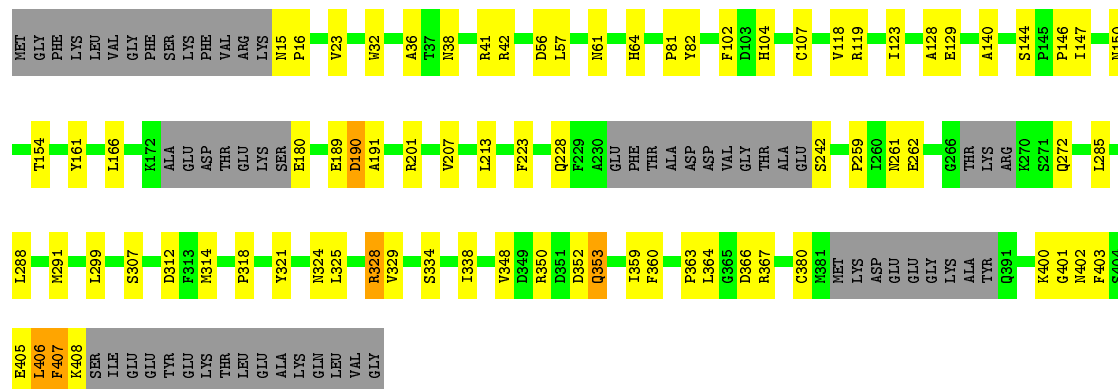
3 Residue-property plots [i](#)

These plots are drawn for all protein, RNA and DNA chains in the entry. The first graphic for a chain summarises the proportions of the various outlier classes displayed in the second graphic. The second graphic shows the sequence view annotated by issues in geometry. Residues are color-coded according to the number of geometric quality criteria for which they contain at least one outlier: green = 0, yellow = 1, orange = 2 and red = 3 or more. Stretches of 2 or more consecutive residues without any outlier are shown as a green connector. Residues present in the sample, but not in the model, are shown in grey.

Note EDS was not executed.

- Molecule 1: 4-hydroxyphenylpyruvate dioxygenase

Chain A: 



4 Data and refinement statistics

Xtriage (Phenix) and EDS were not executed - this section is therefore incomplete.

Property	Value	Source
Space group	C 1 2 1	Depositor
Cell constants a, b, c, α , β , γ	77.40 Å 83.70 Å 63.30 Å 90.00° 102.40° 90.00°	Depositor
Resolution (Å)	15.00 – 1.80	Depositor
% Data completeness (in resolution range)	(Not available) (15.00-1.80)	Depositor
R_{merge}	0.05	Depositor
R_{sym}	(Not available)	Depositor
Refinement program	REFMAC 5.1	Depositor
R, R_{free}	0.215 , 0.289	Depositor
Estimated twinning fraction	No twinning to report.	Xtriage
Total number of atoms	3057	wwPDB-VP
Average B, all atoms (Å ²)	18.0	wwPDB-VP

5 Model quality [i](#)

5.1 Standard geometry [i](#)

Bond lengths and bond angles in the following residue types are not validated in this section: 869, FE

The Z score for a bond length (or angle) is the number of standard deviations the observed value is removed from the expected value. A bond length (or angle) with $|Z| > 5$ is considered an outlier worth inspection. RMSZ is the root-mean-square of all Z scores of the bond lengths (or angles).

Mol	Chain	Bond lengths		Bond angles	
		RMSZ	$\# Z > 5$	RMSZ	$\# Z > 5$
1	A	0.50	0/2896	0.75	1/3911 (0.0%)

There are no bond length outliers.

All (1) bond angle outliers are listed below:

Mol	Chain	Res	Type	Atoms	Z	Observed($^{\circ}$)	Ideal($^{\circ}$)
1	A	407	PHE	CB-CG-CD1	-5.95	116.64	120.80

There are no chirality outliers.

There are no planarity outliers.

5.2 Too-close contacts [i](#)

In the following table, the Non-H and H(model) columns list the number of non-hydrogen atoms and hydrogen atoms in the chain respectively. The H(added) column lists the number of hydrogen atoms added and optimized by MolProbity. The Clashes column lists the number of clashes within the asymmetric unit, whereas Symm-Clashes lists symmetry related clashes.

Mol	Chain	Non-H	H(model)	H(added)	Clashes	Symm-Clashes
1	A	2823	0	2767	48	6
2	A	1	0	0	0	0
3	A	31	0	25	6	0
4	A	202	0	0	3	10
All	All	3057	0	2792	48	13

The all-atom clashscore is defined as the number of clashes found per 1000 atoms (including hydrogen atoms). The all-atom clashscore for this structure is 9.

All (48) close contacts within the same asymmetric unit are listed below, sorted by their clash

magnitude.

Atom-1	Atom-2	Interatomic distance (Å)	Clash overlap (Å)
1:A:353:GLN:HB3	1:A:380:CYS:SG	2.11	0.91
1:A:325:LEU:HD11	1:A:348:VAL:HB	1.63	0.81
1:A:329:VAL:HG12	1:A:350:ARG:HD2	1.67	0.76
1:A:352:ASP:O	1:A:353:GLN:HB2	1.86	0.75
1:A:321:TYR:HB2	1:A:408:LYS:HZ1	1.55	0.71
1:A:123[B]:ILE:HD12	1:A:166:LEU:HD11	1.76	0.66
1:A:81:PRO:HB2	1:A:104:HIS:HD2	1.61	0.66
1:A:403:PHE:CE1	3:A:551:869:H18	2.31	0.66
1:A:321:TYR:HB2	1:A:408:LYS:NZ	2.10	0.66
1:A:272:GLN:NE2	1:A:272:GLN:H	1.96	0.62
1:A:15:ASN:HB3	1:A:16:PRO:HD2	1.83	0.60
1:A:402:ASN:O	1:A:406:LEU:HB2	2.04	0.57
1:A:324:ASN:O	1:A:328:ARG:HG2	2.05	0.57
1:A:318:PRO:HD2	1:A:408:LYS:NZ	2.20	0.57
1:A:146:PRO:HD2	4:A:652:HOH:O	2.04	0.56
1:A:403:PHE:HE1	3:A:551:869:H18	1.70	0.56
1:A:405:GLU:O	1:A:408:LYS:HG2	2.05	0.56
1:A:56:ASP:HB2	1:A:82:TYR:OH	2.06	0.56
1:A:299:LEU:HD11	1:A:359:ILE:HG21	1.87	0.56
1:A:104:HIS:HB3	4:A:637:HOH:O	2.06	0.55
1:A:140:ALA:HB2	1:A:223:PHE:CG	2.42	0.55
1:A:128:ALA:HB3	1:A:154:THR:HG22	1.89	0.55
1:A:213:LEU:HB2	1:A:262:GLU:HB3	1.89	0.55
1:A:81:PRO:HB3	1:A:102:PHE:HZ	1.73	0.53
1:A:400:LYS:HE2	3:A:551:869:H233	1.91	0.51
1:A:118:VAL:HG21	1:A:285:LEU:HD23	1.92	0.51
1:A:407:PHE:O	1:A:408:LYS:HB2	2.10	0.51
1:A:81:PRO:HD3	1:A:107:CYS:SG	2.52	0.49
1:A:23:VAL:HG13	1:A:123[B]:ILE:HG21	1.94	0.49
1:A:261:ASN:HD21	3:A:551:869:H213	1.77	0.49
1:A:15:ASN:HB3	1:A:16:PRO:CD	2.43	0.48
1:A:190:ASP:HB3	1:A:191:ALA:H	1.26	0.48
1:A:147:ILE:HD13	4:A:680:HOH:O	2.15	0.46
1:A:57:LEU:HG	1:A:82:TYR:CZ	2.50	0.45
1:A:207:VAL:HG22	1:A:259:PRO:HB2	1.97	0.45
1:A:285:LEU:HD21	1:A:288:LEU:HD21	1.99	0.45
1:A:334:SER:O	1:A:338:ILE:HG13	2.17	0.44
1:A:259:PRO:HB3	3:A:551:869:H221	1.99	0.44
1:A:15:ASN:CB	1:A:16:PRO:CD	2.96	0.44
1:A:314:MET:HG3	1:A:360:PHE:O	2.17	0.43
1:A:32:TRP:CE3	1:A:107:CYS:HA	2.54	0.42

Continued on next page...

Continued from previous page...

Atom-1	Atom-2	Interatomic distance (Å)	Clash overlap (Å)
1:A:403:PHE:CZ	3:A:551:869:H18	2.54	0.42
1:A:81:PRO:HB3	1:A:102:PHE:CZ	2.55	0.42
1:A:201:ARG:HB2	1:A:291[A]:MET:SD	2.60	0.42
1:A:272:GLN:CD	1:A:272:GLN:H	2.24	0.41
1:A:32:TRP:CE2	1:A:119:ARG:HG2	2.56	0.41
1:A:401:GLY:O	1:A:405:GLU:HG2	2.21	0.41
1:A:61:ASN:HD21	1:A:64:HIS:CD2	2.38	0.41

All (13) symmetry-related close contacts are listed below. The label for Atom-2 includes the symmetry operator and encoded unit-cell translations to be applied.

Atom-1	Atom-2	Interatomic distance (Å)	Clash overlap (Å)
4:A:743:HOH:O	4:A:743:HOH:O[2_656]	1.17	1.03
4:A:638:HOH:O	4:A:638:HOH:O[2_656]	1.38	0.82
4:A:585:HOH:O	4:A:620:HOH:O[2_656]	1.58	0.62
4:A:628:HOH:O	4:A:700:HOH:O[2_656]	1.70	0.50
1:A:367:ARG:NH2	4:A:632:HOH:O[2_656]	1.82	0.38
4:A:580:HOH:O	4:A:664:HOH:O[2_656]	1.91	0.29
4:A:741:HOH:O	4:A:752:HOH:O[2_656]	1.97	0.23
1:A:367:ARG:NE	4:A:612:HOH:O[2_656]	1.99	0.21
1:A:41:ARG:NH2	1:A:312:ASP:OD2[2_656]	2.06	0.14
1:A:36:ALA:N	1:A:366:ASP:OD2[2_656]	2.08	0.12
4:A:713:HOH:O	4:A:733:HOH:O[4_656]	2.17	0.03
1:A:38:ASN:ND2	1:A:364:LEU:O[2_656]	2.17	0.03
1:A:307:SER:O	4:A:629:HOH:O[2_656]	2.18	0.02

5.3 Torsion angles [i](#)

5.3.1 Protein backbone [i](#)

In the following table, the Percentiles column shows the percent Ramachandran outliers of the chain as a percentile score with respect to all X-ray entries followed by that with respect to entries of similar resolution.

The Analysed column shows the number of residues for which the backbone conformation was analysed, and the total number of residues.

Mol	Chain	Analysed	Favoured	Allowed	Outliers	Percentiles
1	A	356/424 (84%)	339 (95%)	16 (4%)	1 (0%)	41 27

All (1) Ramachandran outliers are listed below:

Mol	Chain	Res	Type
1	A	353	GLN

5.3.2 Protein sidechains ⓘ

In the following table, the Percentiles column shows the percent sidechain outliers of the chain as a percentile score with respect to all X-ray entries followed by that with respect to entries of similar resolution.

The Analysed column shows the number of residues for which the sidechain conformation was analysed, and the total number of residues.

Mol	Chain	Analysed	Rotameric	Outliers	Percentiles	
1	A	308/356 (86%)	295 (96%)	13 (4%)	30	15

All (13) residues with a non-rotameric sidechain are listed below:

Mol	Chain	Res	Type
1	A	42	ARG
1	A	129	GLU
1	A	144	SER
1	A	150	ASN
1	A	161	TYR
1	A	180	GLU
1	A	189	GLU
1	A	190	ASP
1	A	228	GLN
1	A	242	SER
1	A	328	ARG
1	A	363	PRO
1	A	406	LEU

Some sidechains can be flipped to improve hydrogen bonding and reduce clashes. All (7) such sidechains are listed below:

Mol	Chain	Res	Type
1	A	150	ASN
1	A	245	ASN
1	A	261	ASN
1	A	265	HIS
1	A	272	GLN
1	A	280	ASN

Continued on next page...

Continued from previous page...

Mol	Chain	Res	Type
1	A	324	ASN

5.3.3 RNA ⓘ

There are no RNA molecules in this entry.

5.4 Non-standard residues in protein, DNA, RNA chains ⓘ

There are no non-standard protein/DNA/RNA residues in this entry.

5.5 Carbohydrates ⓘ

There are no carbohydrates in this entry.

5.6 Ligand geometry ⓘ

Of 2 ligands modelled in this entry, 1 is monoatomic - leaving 1 for Mogul analysis.

In the following table, the Counts columns list the number of bonds (or angles) for which Mogul statistics could be retrieved, the number of bonds (or angles) that are observed in the model and the number of bonds (or angles) that are defined in the Chemical Component Dictionary. The Link column lists molecule types, if any, to which the group is linked. The Z score for a bond length (or angle) is the number of standard deviations the observed value is removed from the expected value. A bond length (or angle) with $|Z| > 2$ is considered an outlier worth inspection. RMSZ is the root-mean-square of all Z scores of the bond lengths (or angles).

Mol	Type	Chain	Res	Link	Bond lengths			Bond angles		
					Counts	RMSZ	$\# Z > 2$	Counts	RMSZ	$\# Z > 2$
3	869	A	551	2	28,33,33	3.15	9 (32%)	36,51,51	2.27	7 (19%)

In the following table, the Chirals column lists the number of chiral outliers, the number of chiral centers analysed, the number of these observed in the model and the number defined in the Chemical Component Dictionary. Similar counts are reported in the Torsion and Rings columns. '-' means no outliers of that kind were identified.

Mol	Type	Chain	Res	Link	Chirals	Torsions	Rings
3	869	A	551	2	-	2/22/26/26	0/3/3/3

All (9) bond length outliers are listed below:

Mol	Chain	Res	Type	Atoms	Z	Observed(Å)	Ideal(Å)
3	A	551	869	C5-S11	-11.46	1.61	1.77
3	A	551	869	C6-C26	-6.70	1.37	1.50
3	A	551	869	C6-C5	5.77	1.46	1.41
3	A	551	869	C7-C1	-4.49	1.42	1.51
3	A	551	869	O19-C15	2.65	1.40	1.32
3	A	551	869	C9-C8	2.57	1.55	1.50
3	A	551	869	C4-C5	2.52	1.42	1.39
3	A	551	869	O12-S11	-2.15	1.38	1.44
3	A	551	869	O13-S11	-2.05	1.38	1.44

All (7) bond angle outliers are listed below:

Mol	Chain	Res	Type	Atoms	Z	Observed(°)	Ideal(°)
3	A	551	869	O12-S11-O13	-7.01	105.85	117.92
3	A	551	869	C14-S11-C5	6.44	114.66	105.11
3	A	551	869	C18-C9-C8	-5.29	117.93	127.45
3	A	551	869	C18-N17-N16	4.44	108.86	104.23
3	A	551	869	C31-O30-C29	-3.57	109.76	117.51
3	A	551	869	O10-C8-C2	-2.94	114.68	119.82
3	A	551	869	C23-C20-C22	-2.04	106.35	110.05

There are no chirality outliers.

All (2) torsion outliers are listed below:

Mol	Chain	Res	Type	Atoms
3	A	551	869	C24-C29-O30-C31
3	A	551	869	C28-C29-O30-C31

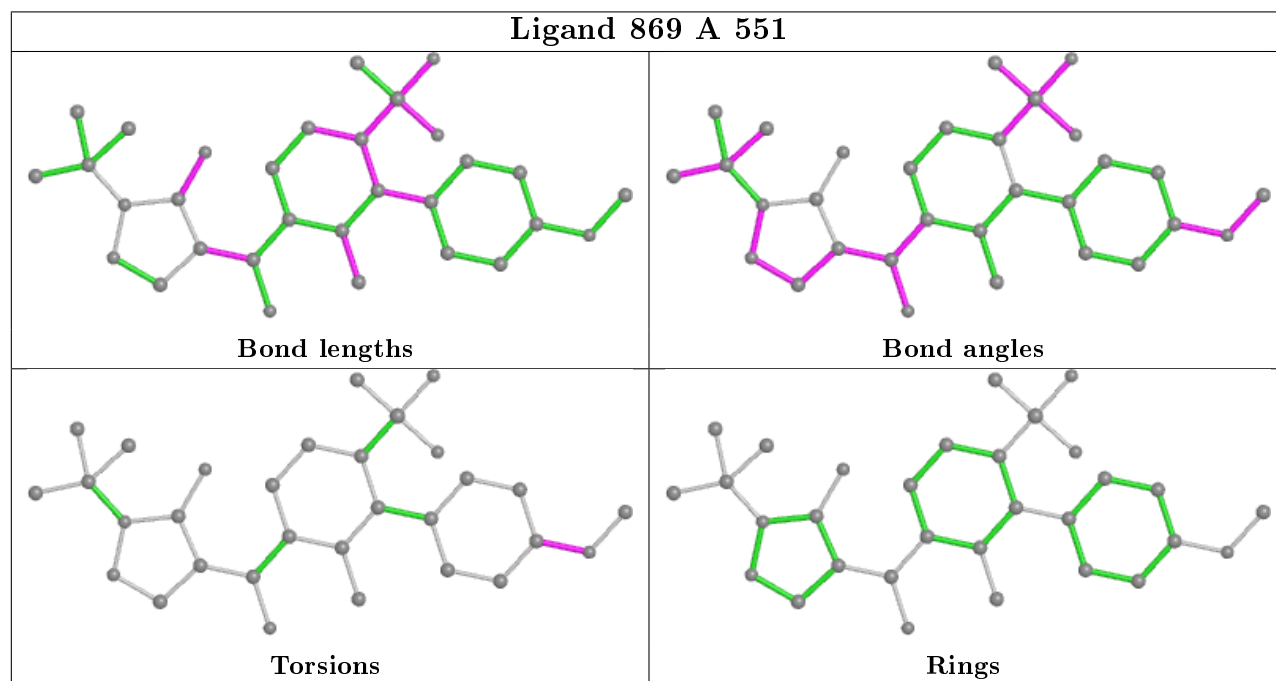
There are no ring outliers.

1 monomer is involved in 6 short contacts:

Mol	Chain	Res	Type	Clashes	Symm-Clashes
3	A	551	869	6	0

The following is a two-dimensional graphical depiction of Mogul quality analysis of bond lengths, bond angles, torsion angles, and ring geometry for all instances of the Ligand of Interest. In addition, ligands with molecular weight > 250 and outliers as shown on the validation Tables will also be included. For torsion angles, if less than 5% of the Mogul distribution of torsion angles is within 10 degrees of the torsion angle in question, then that torsion angle is considered an outlier. Any bond that is central to one or more torsion angles identified as an outlier by Mogul will be highlighted in the graph. For rings, the root-mean-square deviation (RMSD) between the ring in question and similar rings identified by Mogul is calculated over all ring torsion angles. If the

average RMSD is greater than 60 degrees and the minimal RMSD between the ring in question and any Mogul-identified rings is also greater than 60 degrees, then that ring is considered an outlier. The outliers are highlighted in purple. The color gray indicates Mogul did not find sufficient equivalents in the CSD to analyse the geometry.



5.7 Other polymers [i](#)

There are no such residues in this entry.

5.8 Polymer linkage issues [i](#)

There are no chain breaks in this entry.

6 Fit of model and data ⓘ

6.1 Protein, DNA and RNA chains ⓘ

EDS was not executed - this section is therefore empty.

6.2 Non-standard residues in protein, DNA, RNA chains ⓘ

EDS was not executed - this section is therefore empty.

6.3 Carbohydrates ⓘ

EDS was not executed - this section is therefore empty.

6.4 Ligands ⓘ

EDS was not executed - this section is therefore empty.

6.5 Other polymers ⓘ

EDS was not executed - this section is therefore empty.