



wwPDB X-ray Structure Validation Summary Report ⓘ

Aug 9, 2020 – 03:48 AM BST

PDB ID : 3THD
Title : Crystal structure of human beta-galactosidase in complex with 1-deoxygalactonojirimycin
Authors : Ohto, U.; Shimizu, T.
Deposited on : 2011-08-18
Resolution : 1.79 Å(reported)

This is a wwPDB X-ray Structure Validation Summary Report for a publicly released PDB entry.

We welcome your comments at validation@mail.wwpdb.org

A user guide is available at

<https://www.wwpdb.org/validation/2017/XrayValidationReportHelp>

with specific help available everywhere you see the ⓘ symbol.

The following versions of software and data (see [references ⓘ](#)) were used in the production of this report:

MolProbity : 4.02b-467
Mogul : 1.8.5 (274361), CSD as541be (2020)
Xtriage (Phenix) : 1.13
EDS : 2.13.1
Percentile statistics : 20191225.v01 (using entries in the PDB archive December 25th 2019)
Refmac : 5.8.0158
CCP4 : 7.0.044 (Gargrove)
Ideal geometry (proteins) : Engh & Huber (2001)
Ideal geometry (DNA, RNA) : Parkinson et al. (1996)
Validation Pipeline (wwPDB-VP) : 2.13.1

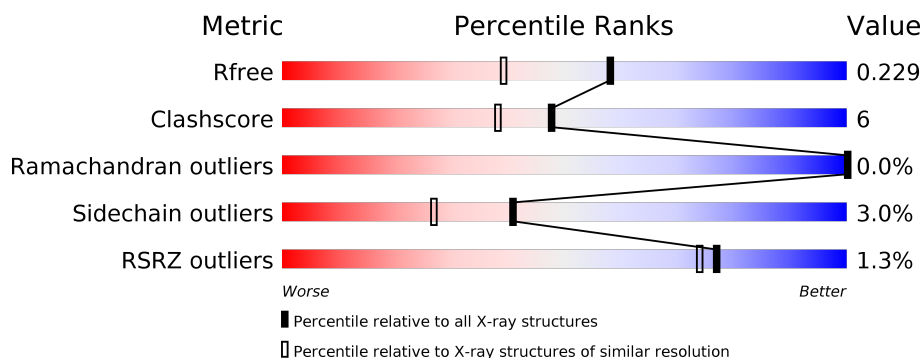
1 Overall quality at a glance

The following experimental techniques were used to determine the structure:

X-RAY DIFFRACTION

The reported resolution of this entry is 1.79 Å.

Percentile scores (ranging between 0-100) for global validation metrics of the entry are shown in the following graphic. The table shows the number of entries on which the scores are based.



Metric	Whole archive (#Entries)	Similar resolution (#Entries, resolution range(Å))
R_{free}	130704	5950 (1.80-1.80)
Clashscore	141614	6793 (1.80-1.80)
Ramachandran outliers	138981	6697 (1.80-1.80)
Sidechain outliers	138945	6696 (1.80-1.80)
RSRZ outliers	127900	5850 (1.80-1.80)

The table below summarises the geometric issues observed across the polymeric chains and their fit to the electron density. The red, orange, yellow and green segments on the lower bar indicate the fraction of residues that contain outliers for ≥ 3 , 2, 1 and 0 types of geometric quality criteria respectively. A grey segment represents the fraction of residues that are not modelled. The numeric value for each fraction is indicated below the corresponding segment, with a dot representing fractions $\leq 5\%$. The upper red bar (where present) indicates the fraction of residues that have poor fit to the electron density. The numeric value is given above the bar.

Mol	Chain	Length	Quality of chain
1	A	654	<div> <div>%</div> <div> <div></div> <div>79%</div> <div>11%</div> <div>7%</div> </div> </div>
1	B	654	<div> <div>%</div> <div> <div></div> <div>82%</div> <div>10%</div> <div>7%</div> </div> </div>
1	C	654	<div> <div>%</div> <div> <div></div> <div>80%</div> <div>11%</div> <div>8%</div> </div> </div>
1	D	654	<div> <div>2%</div> <div> <div></div> <div>82%</div> <div>9%</div> <div>8%</div> </div> </div>

The following table lists non-polymeric compounds, carbohydrate monomers and non-standard residues in protein, DNA, RNA chains that are outliers for geometric or electron-density-fit crite-

ria:

Mol	Type	Chain	Res	Chirality	Geometry	Clashes	Electron density
2	NAG	D	703	-	-	-	X
6	EDO	D	1101	-	-	X	-

2 Entry composition [i](#)

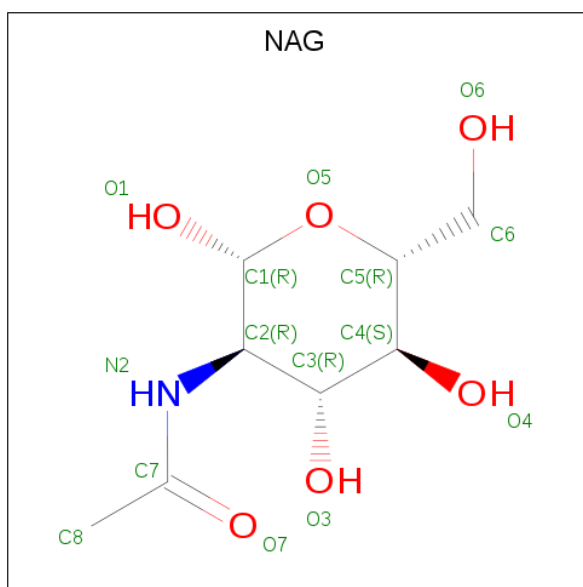
There are 7 unique types of molecules in this entry. The entry contains 21969 atoms, of which 0 are hydrogens and 0 are deuteriums.

In the tables below, the ZeroOcc column contains the number of atoms modelled with zero occupancy, the AltConf column contains the number of residues with at least one atom in alternate conformation and the Trace column contains the number of residues modelled with at most 2 atoms.

- Molecule 1 is a protein called Beta-galactosidase.

Mol	Chain	Residues	Atoms					ZeroOcc	AltConf	Trace
1	A	605	Total	C	N	O	S	0	8	0
			4875	3161	803	893	18			
1	B	605	Total	C	N	O	S	0	5	0
			4850	3146	800	887	17			
1	C	602	Total	C	N	O	S	0	9	0
			4861	3153	798	893	17			
1	D	602	Total	C	N	O	S	0	9	0
			4855	3149	798	890	18			

- Molecule 2 is 2-acetamido-2-deoxy-beta-D-glucopyranose (three-letter code: NAG) (formula: $C_8H_{15}NO_6$).



Mol	Chain	Residues	Atoms				ZeroOcc	AltConf
2	A	1	Total	C	N	O	0	0
			14	8	1	5		
2	A	1	Total	C	N	O	0	0
			14	8	1	5		

Continued on next page...

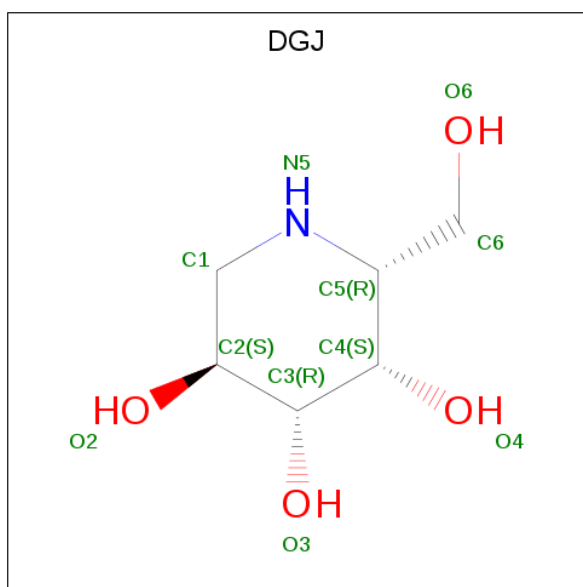
Continued from previous page...

Mol	Chain	Residues	Atoms				ZeroOcc	AltConf
2	A	1	Total	C	N	O	0	0
			14	8	1	5		
2	A	1	Total	C	N	O	0	0
			14	8	1	5		
2	B	1	Total	C	N	O	0	0
			14	8	1	5		
2	B	1	Total	C	N	O	0	0
			14	8	1	5		
2	B	1	Total	C	N	O	0	0
			14	8	1	5		
2	B	1	Total	C	N	O	0	0
			14	8	1	5		
2	C	1	Total	C	N	O	0	0
			14	8	1	5		
2	C	1	Total	C	N	O	0	0
			14	8	1	5		
2	C	1	Total	C	N	O	0	0
			14	8	1	5		
2	C	1	Total	C	N	O	0	0
			14	8	1	5		
2	D	1	Total	C	N	O	0	0
			14	8	1	5		
2	D	1	Total	C	N	O	0	0
			14	8	1	5		
2	D	1	Total	C	N	O	0	0
			14	8	1	5		

- Molecule 3 is CHLORIDE ION (three-letter code: CL) (formula: Cl).

Mol	Chain	Residues	Atoms		ZeroOcc	AltConf
3	B	1	Total	Cl	0	0
			1	1		
3	A	1	Total	Cl	0	0
			1	1		
3	D	1	Total	Cl	0	0
			1	1		
3	C	1	Total	Cl	0	0
			1	1		

- Molecule 4 is (2R,3S,4R,5S)-2-(hydroxymethyl)piperidine-3,4,5-triol (three-letter code: DGJ) (formula: C₆H₁₃NO₄).



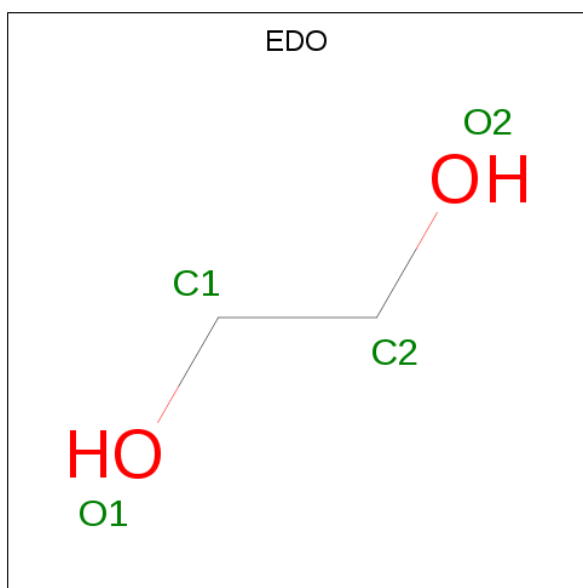
Mol	Chain	Residues	Atoms				ZeroOcc	AltConf
4	A	1	Total	C	N	O	0	0
			11	6	1	4		
4	B	1	Total	C	N	O	0	0
			11	6	1	4		
4	C	1	Total	C	N	O	0	0
			11	6	1	4		
4	D	1	Total	C	N	O	0	0
			11	6	1	4		

- Molecule 5 is SULFATE ION (three-letter code: SO4) (formula: O₄S).



Mol	Chain	Residues	Atoms	ZeroOcc	AltConf
5	A	1	Total O S 5 4 1	0	0
5	A	1	Total O S 5 4 1	0	0
5	B	1	Total O S 5 4 1	0	0
5	B	1	Total O S 5 4 1	0	0
5	C	1	Total O S 5 4 1	0	0
5	C	1	Total O S 5 4 1	0	0
5	D	1	Total O S 5 4 1	0	0
5	D	1	Total O S 5 4 1	0	0

- Molecule 6 is 1,2-ETHANEDIOL (three-letter code: EDO) (formula: $C_2H_6O_2$).



Mol	Chain	Residues	Atoms	ZeroOcc	AltConf
6	A	1	Total C O 4 2 2	0	0
6	A	1	Total C O 4 2 2	0	0
6	B	1	Total C O 4 2 2	0	0
6	B	1	Total C O 4 2 2	0	0

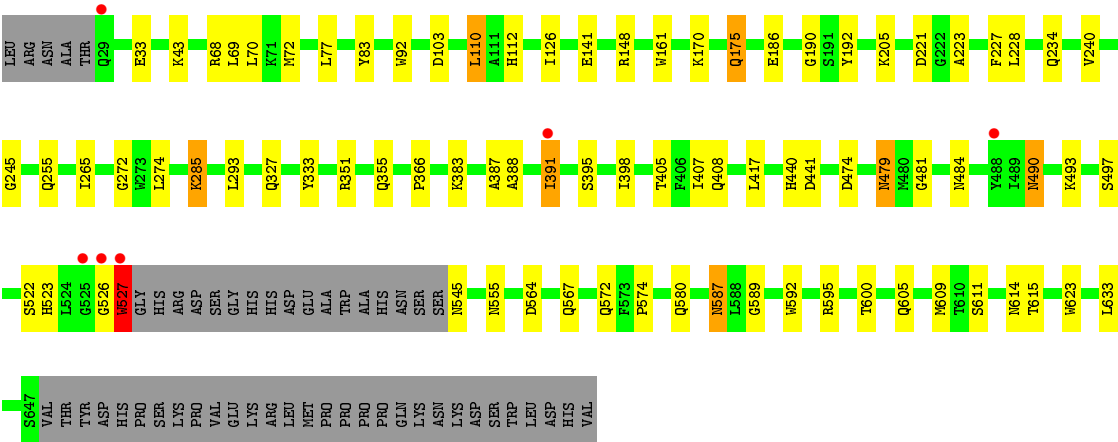
Continued on next page...

Continued from previous page...

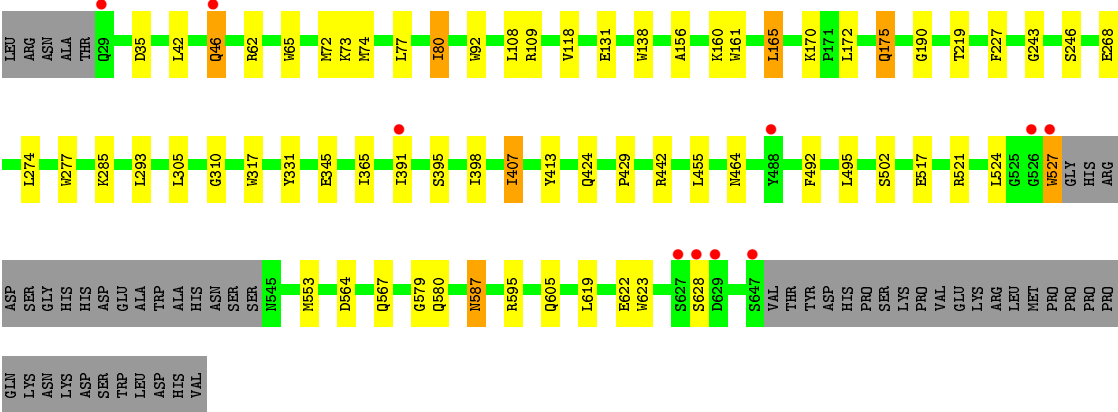
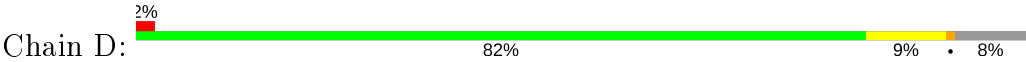
Mol	Chain	Residues	Atoms			ZeroOcc	AltConf
6	C	1	Total	C	O	0	0
			4	2	2		
6	C	1	Total	C	O	0	0
			4	2	2		
6	D	1	Total	C	O	0	0
			4	2	2		
6	D	1	Total	C	O	0	0
			4	2	2		

- Molecule 7 is water.

Mol	Chain	Residues	Atoms		ZeroOcc	AltConf
7	A	555	Total	O	0	0
			555	555		
7	B	603	Total	O	0	0
			603	603		
7	C	529	Total	O	0	0
			529	529		
7	D	497	Total	O	0	0
			497	497		



• Molecule 1: Beta-galactosidase



4 Data and refinement statistics

Property	Value	Source
Space group	P 1 21 1	Depositor
Cell constants a, b, c, α , β , γ	94.79 Å 116.00 Å 140.33 Å 90.00° 92.22° 90.00°	Depositor
Resolution (Å)	29.29 – 1.79 29.29 – 1.79	Depositor EDS
% Data completeness (in resolution range)	92.8 (29.29-1.79) 92.9 (29.29-1.79)	Depositor EDS
R_{merge}	(Not available)	Depositor
R_{sym}	(Not available)	Depositor
$\langle I/\sigma(I) \rangle$ ¹	3.17 (at 1.79 Å)	Xtriage
Refinement program	REFMAC 5.6.0117	Depositor
R, R_{free}	0.198 , 0.228 0.200 , 0.229	Depositor DCC
R_{free} test set	13274 reflections (5.06%)	wwPDB-VP
Wilson B-factor (Å ²)	13.4	Xtriage
Anisotropy	0.228	Xtriage
Bulk solvent k_{sol} (e/Å ³), B_{sol} (Å ²)	0.36 , 31.1	EDS
L-test for twinning ²	$\langle L \rangle = 0.46$, $\langle L^2 \rangle = 0.29$	Xtriage
Estimated twinning fraction	0.068 for h,-k,-l	Xtriage
F_o, F_c correlation	0.93	EDS
Total number of atoms	21969	wwPDB-VP
Average B, all atoms (Å ²)	20.0	wwPDB-VP

Xtriage's analysis on translational NCS is as follows: *The largest off-origin peak in the Patterson function is 3.05% of the height of the origin peak. No significant pseudotranslation is detected.*

¹Intensities estimated from amplitudes.

²Theoretical values of $\langle |L| \rangle$, $\langle L^2 \rangle$ for acentric reflections are 0.5, 0.333 respectively for untwinned datasets, and 0.375, 0.2 for perfectly twinned datasets.

5 Model quality [i](#)

5.1 Standard geometry [i](#)

Bond lengths and bond angles in the following residue types are not validated in this section: DGJ, SO4, EDO, NAG, CL

The Z score for a bond length (or angle) is the number of standard deviations the observed value is removed from the expected value. A bond length (or angle) with $|Z| > 5$ is considered an outlier worth inspection. RMSZ is the root-mean-square of all Z scores of the bond lengths (or angles).

Mol	Chain	Bond lengths		Bond angles	
		RMSZ	$\# Z > 5$	RMSZ	$\# Z > 5$
1	A	0.71	3/5026 (0.1%)	0.74	1/6857 (0.0%)
1	B	0.73	3/5001 (0.1%)	0.72	0/6823
1	C	0.69	3/5011 (0.1%)	0.71	2/6838 (0.0%)
1	D	0.69	6/5004 (0.1%)	0.71	1/6828 (0.0%)
All	All	0.71	15/20042 (0.1%)	0.72	4/27346 (0.0%)

The worst 5 of 15 bond length outliers are listed below:

Mol	Chain	Res	Type	Atoms	Z	Observed(Å)	Ideal(Å)
1	D	277	TRP	CD2-CE2	5.84	1.48	1.41
1	B	138	TRP	CD2-CE2	5.61	1.48	1.41
1	D	527	TRP	CD2-CE2	5.47	1.48	1.41
1	C	527	TRP	CD2-CE2	5.46	1.48	1.41
1	B	509	TRP	CD2-CE2	5.44	1.47	1.41

All (4) bond angle outliers are listed below:

Mol	Chain	Res	Type	Atoms	Z	Observed($^{\circ}$)	Ideal($^{\circ}$)
1	A	104	VAL	CB-CA-C	-7.95	96.31	111.40
1	C	68	ARG	NE-CZ-NH1	5.46	123.03	120.30
1	C	103	ASP	CB-CG-OD1	5.21	122.99	118.30
1	D	305	LEU	CB-CG-CD2	-5.13	102.28	111.00

There are no chirality outliers.

There are no planarity outliers.

5.2 Too-close contacts ⓘ

In the following table, the Non-H and H(model) columns list the number of non-hydrogen atoms and hydrogen atoms in the chain respectively. The H(added) column lists the number of hydrogen atoms added and optimized by MolProbity. The Clashes column lists the number of clashes within the asymmetric unit, whereas Symm-Clashes lists symmetry related clashes.

Mol	Chain	Non-H	H(model)	H(added)	Clashes	Symm-Clashes
1	A	4875	0	4728	75	0
1	B	4850	0	4710	41	0
1	C	4861	0	4713	66	0
1	D	4855	0	4722	48	0
2	A	56	0	52	0	0
2	B	56	0	52	3	0
2	C	56	0	52	1	0
2	D	56	0	52	0	0
3	A	1	0	0	0	0
3	B	1	0	0	0	0
3	C	1	0	0	0	0
3	D	1	0	0	0	0
4	A	11	0	13	0	0
4	B	11	0	13	0	0
4	C	11	0	13	0	0
4	D	11	0	13	1	0
5	A	10	0	0	1	0
5	B	10	0	0	1	0
5	C	10	0	0	0	0
5	D	10	0	0	0	0
6	A	8	0	12	4	0
6	B	8	0	12	2	0
6	C	8	0	12	2	0
6	D	8	0	12	5	0
7	A	555	0	0	17	0
7	B	603	0	0	22	0
7	C	529	0	0	20	0
7	D	497	0	0	15	0
All	All	21969	0	19181	236	0

The all-atom clashscore is defined as the number of clashes found per 1000 atoms (including hydrogen atoms). The all-atom clashscore for this structure is 6.

The worst 5 of 236 close contacts within the same asymmetric unit are listed below, sorted by their clash magnitude.

Atom-1	Atom-2	Interatomic distance (Å)	Clash overlap (Å)
1:C:228:LEU:HD11	7:C:1610:HOH:O	1.48	1.14
1:A:409[A]:VAL:CG1	1:A:513:PRO:HG3	1.76	1.13
1:D:243:GLY:H	6:D:1101:EDO:H11	1.16	1.07
1:C:609:MET:SD	7:C:1351:HOH:O	2.16	1.02
1:B:252:PHE:HZ	7:B:1872:HOH:O	1.44	1.01

There are no symmetry-related clashes.

5.3 Torsion angles [i](#)

5.3.1 Protein backbone [i](#)

In the following table, the Percentiles column shows the percent Ramachandran outliers of the chain as a percentile score with respect to all X-ray entries followed by that with respect to entries of similar resolution.

The Analysed column shows the number of residues for which the backbone conformation was analysed, and the total number of residues.

Mol	Chain	Analysed	Favoured	Allowed	Outliers	Percentiles	
1	A	609/654 (93%)	591 (97%)	17 (3%)	1 (0%)	47	33
1	B	606/654 (93%)	586 (97%)	20 (3%)	0	100	100
1	C	607/654 (93%)	589 (97%)	18 (3%)	0	100	100
1	D	607/654 (93%)	591 (97%)	16 (3%)	0	100	100
All	All	2429/2616 (93%)	2357 (97%)	71 (3%)	1 (0%)	100	100

All (1) Ramachandran outliers are listed below:

Mol	Chain	Res	Type
1	A	611	SER

5.3.2 Protein sidechains [i](#)

In the following table, the Percentiles column shows the percent sidechain outliers of the chain as a percentile score with respect to all X-ray entries followed by that with respect to entries of similar resolution.

The Analysed column shows the number of residues for which the sidechain conformation was analysed, and the total number of residues.

Mol	Chain	Analysed	Rotameric	Outliers	Percentiles	
1	A	526/563 (93%)	506 (96%)	20 (4%)	33	18
1	B	523/563 (93%)	511 (98%)	12 (2%)	50	37
1	C	525/563 (93%)	508 (97%)	17 (3%)	39	25
1	D	525/563 (93%)	509 (97%)	16 (3%)	41	27
All	All	2099/2252 (93%)	2034 (97%)	65 (3%)	41	25

5 of 65 residues with a non-rotameric sidechain are listed below:

Mol	Chain	Res	Type
1	B	553	MET
1	C	175[B]	GLN
1	D	495	LEU
1	B	605	GLN
1	C	110	LEU

Some sidechains can be flipped to improve hydrogen bonding and reduce clashes. 5 of 39 such sidechains are listed below:

Mol	Chain	Res	Type
1	B	279	GLN
1	B	459	ASN
1	D	572	GLN
1	B	321	ASN
1	B	355	GLN

5.3.3 RNA ⓘ

There are no RNA molecules in this entry.

5.4 Non-standard residues in protein, DNA, RNA chains ⓘ

There are no non-standard protein/DNA/RNA residues in this entry.

5.5 Carbohydrates ⓘ

There are no monosaccharides in this entry.

5.6 Ligand geometry

Of 40 ligands modelled in this entry, 4 are monoatomic - leaving 36 for Mogul analysis.

In the following table, the Counts columns list the number of bonds (or angles) for which Mogul statistics could be retrieved, the number of bonds (or angles) that are observed in the model and the number of bonds (or angles) that are defined in the Chemical Component Dictionary. The Link column lists molecule types, if any, to which the group is linked. The Z score for a bond length (or angle) is the number of standard deviations the observed value is removed from the expected value. A bond length (or angle) with $|Z| > 2$ is considered an outlier worth inspection. RMSZ is the root-mean-square of all Z scores of the bond lengths (or angles).

Mol	Type	Chain	Res	Link	Bond lengths			Bond angles		
					Counts	RMSZ	# Z > 2	Counts	RMSZ	# Z > 2
2	NAG	C	703	1	14,14,15	0.41	0	17,19,21	1.59	3 (17%)
5	SO4	C	1001	-	4,4,4	0.40	0	6,6,6	0.12	0
2	NAG	B	702	1	14,14,15	0.71	0	17,19,21	1.17	0
5	SO4	A	1002	-	4,4,4	0.52	0	6,6,6	0.29	0
5	SO4	D	1002	-	4,4,4	0.36	0	6,6,6	0.28	0
2	NAG	A	702	1	14,14,15	0.43	0	17,19,21	0.99	1 (5%)
4	DGJ	C	900	-	11,11,11	1.65	3 (27%)	13,15,15	2.04	7 (53%)
4	DGJ	A	900	-	11,11,11	1.26	1 (9%)	13,15,15	2.85	6 (46%)
2	NAG	D	703	1	14,14,15	0.65	0	17,19,21	1.35	2 (11%)
2	NAG	D	702	1	14,14,15	0.74	0	17,19,21	1.26	2 (11%)
2	NAG	C	702	1	14,14,15	0.60	0	17,19,21	1.39	3 (17%)
2	NAG	D	704	1	14,14,15	0.47	0	17,19,21	1.40	2 (11%)
2	NAG	C	701	1	14,14,15	0.57	0	17,19,21	1.34	3 (17%)
5	SO4	B	1001	-	4,4,4	0.32	0	6,6,6	0.18	0
2	NAG	A	704	1	14,14,15	0.54	0	17,19,21	1.17	1 (5%)
2	NAG	A	703	1	14,14,15	0.62	0	17,19,21	2.13	4 (23%)
2	NAG	C	704	1	14,14,15	0.44	0	17,19,21	0.96	0
5	SO4	B	1002	-	4,4,4	0.51	0	6,6,6	0.57	0
2	NAG	A	701	1	14,14,15	0.70	0	17,19,21	2.05	5 (29%)
6	EDO	D	1101	-	3,3,3	0.34	0	2,2,2	0.82	0
6	EDO	C	1102	-	3,3,3	1.01	0	2,2,2	0.14	0
4	DGJ	D	900	-	11,11,11	1.17	1 (9%)	13,15,15	3.13	7 (53%)
5	SO4	C	1002	-	4,4,4	0.38	0	6,6,6	0.23	0
2	NAG	B	703	1	14,14,15	0.73	0	17,19,21	2.41	9 (52%)
4	DGJ	B	900	-	11,11,11	1.74	3 (27%)	13,15,15	2.68	6 (46%)
6	EDO	B	1102	-	3,3,3	0.70	0	2,2,2	1.22	0
5	SO4	D	1001	-	4,4,4	0.37	0	6,6,6	0.16	0
6	EDO	A	1102	-	3,3,3	0.51	0	2,2,2	0.67	0
6	EDO	A	1101	-	3,3,3	0.32	0	2,2,2	1.38	0

Mol	Type	Chain	Res	Link	Bond lengths			Bond angles		
					Counts	RMSZ	# Z > 2	Counts	RMSZ	# Z > 2
6	EDO	D	1102	-	3,3,3	0.71	0	2,2,2	0.26	0
6	EDO	B	1101	-	3,3,3	0.64	0	2,2,2	0.76	0
2	NAG	B	701	1	14,14,15	0.73	0	17,19,21	1.98	7 (41%)
6	EDO	C	1101	-	3,3,3	0.27	0	2,2,2	0.99	0
2	NAG	D	701	1	14,14,15	0.46	0	17,19,21	1.24	2 (11%)
2	NAG	B	704	1	14,14,15	0.50	0	17,19,21	1.17	2 (11%)
5	SO4	A	1001	-	4,4,4	0.36	0	6,6,6	0.25	0

In the following table, the Chirals column lists the number of chiral outliers, the number of chiral centers analysed, the number of these observed in the model and the number defined in the Chemical Component Dictionary. Similar counts are reported in the Torsion and Rings columns. '-' means no outliers of that kind were identified.

Mol	Type	Chain	Res	Link	Chirals	Torsions	Rings
2	NAG	C	703	1	-	2/6/23/26	0/1/1/1
6	EDO	A	1102	-	-	0/1/1/1	-
2	NAG	B	702	1	-	0/6/23/26	0/1/1/1
2	NAG	A	702	1	-	0/6/23/26	0/1/1/1
4	DGJ	C	900	-	-	0/2/19/19	0/1/1/1
4	DGJ	A	900	-	-	0/2/19/19	0/1/1/1
2	NAG	D	703	1	-	2/6/23/26	0/1/1/1
2	NAG	D	702	1	-	0/6/23/26	0/1/1/1
2	NAG	C	702	1	-	0/6/23/26	0/1/1/1
2	NAG	D	704	1	-	0/6/23/26	0/1/1/1
2	NAG	C	701	1	-	1/6/23/26	0/1/1/1
2	NAG	A	704	1	-	0/6/23/26	0/1/1/1
2	NAG	A	703	1	-	0/6/23/26	0/1/1/1
2	NAG	C	704	1	-	0/6/23/26	0/1/1/1
2	NAG	A	701	1	-	2/6/23/26	0/1/1/1
6	EDO	D	1101	-	-	1/1/1/1	-
4	DGJ	D	900	-	-	0/2/19/19	0/1/1/1
2	NAG	B	703	1	-	0/6/23/26	0/1/1/1
4	DGJ	B	900	-	-	0/2/19/19	0/1/1/1
6	EDO	B	1102	-	-	1/1/1/1	-
6	EDO	A	1101	-	-	0/1/1/1	-
6	EDO	D	1102	-	-	0/1/1/1	-
6	EDO	B	1101	-	-	1/1/1/1	-
2	NAG	B	701	1	-	0/6/23/26	0/1/1/1
6	EDO	C	1101	-	-	0/1/1/1	-
2	NAG	D	701	1	-	2/6/23/26	0/1/1/1
2	NAG	B	704	1	-	0/6/23/26	0/1/1/1

Continued on next page...

Continued from previous page...

Mol	Type	Chain	Res	Link	Chirals	Torsions	Rings
6	EDO	C	1102	-	-	0/1/1/1	-

The worst 5 of 8 bond length outliers are listed below:

Mol	Chain	Res	Type	Atoms	Z	Observed(Å)	Ideal(Å)
4	B	900	DGJ	C1-C2	3.49	1.55	1.52
4	C	900	DGJ	C4-C3	-3.02	1.44	1.52
4	C	900	DGJ	C1-C2	2.99	1.55	1.52
4	C	900	DGJ	C5-N5	2.93	1.51	1.47
4	B	900	DGJ	C5-N5	2.55	1.51	1.47

The worst 5 of 72 bond angle outliers are listed below:

Mol	Chain	Res	Type	Atoms	Z	Observed(°)	Ideal(°)
4	A	900	DGJ	C4-C5-N5	-6.03	97.04	109.14
4	D	900	DGJ	C4-C5-N5	-5.98	97.16	109.14
2	B	703	NAG	C1-O5-C5	5.75	119.99	112.19
4	D	900	DGJ	C2-C3-C4	-5.28	101.75	110.89
4	A	900	DGJ	O4-C4-C3	5.24	122.47	110.35

There are no chirality outliers.

5 of 12 torsion outliers are listed below:

Mol	Chain	Res	Type	Atoms
2	D	703	NAG	O5-C5-C6-O6
2	D	703	NAG	C4-C5-C6-O6
2	C	703	NAG	O5-C5-C6-O6
6	D	1101	EDO	O1-C1-C2-O2
6	B	1102	EDO	O1-C1-C2-O2

There are no ring outliers.

11 monomers are involved in 20 short contacts:

Mol	Chain	Res	Type	Clashes	Symm-Clashes
5	A	1002	SO4	1	0
2	C	702	NAG	1	0
5	B	1002	SO4	1	0
6	D	1101	EDO	5	0
4	D	900	DGJ	1	0
2	B	703	NAG	3	0
6	B	1102	EDO	1	0

Continued on next page...

Continued from previous page...

Mol	Chain	Res	Type	Clashes	Symm-Clashes
6	A	1102	EDO	1	0
6	A	1101	EDO	3	0
6	B	1101	EDO	1	0
6	C	1101	EDO	2	0

5.7 Other polymers [i](#)

There are no such residues in this entry.

5.8 Polymer linkage issues [i](#)

There are no chain breaks in this entry.

6 Fit of model and data [i](#)

6.1 Protein, DNA and RNA chains [i](#)

In the following table, the column labelled ‘#RSRZ> 2’ contains the number (and percentage) of RSRZ outliers, followed by percent RSRZ outliers for the chain as percentile scores relative to all X-ray entries and entries of similar resolution. The OWAB column contains the minimum, median, 95th percentile and maximum values of the occupancy-weighted average B-factor per residue. The column labelled ‘Q< 0.9’ lists the number of (and percentage) of residues with an average occupancy less than 0.9.

Mol	Chain	Analysed	<RSRZ>	#RSRZ>2	OWAB(Å ²)	Q<0.9
1	A	605/654 (92%)	-0.25	6 (0%) 82 80	7, 16, 31, 69	0
1	B	605/654 (92%)	-0.30	9 (1%) 73 70	7, 15, 29, 62	0
1	C	602/654 (92%)	-0.18	6 (0%) 82 80	8, 18, 39, 61	0
1	D	602/654 (92%)	-0.09	10 (1%) 70 66	8, 19, 43, 73	0
All	All	2414/2616 (92%)	-0.20	31 (1%) 77 74	7, 17, 38, 73	0

The worst 5 of 31 RSRZ outliers are listed below:

Mol	Chain	Res	Type	RSRZ
1	B	646	SER	5.1
1	C	527	TRP	5.0
1	A	29	GLN	4.8
1	D	628	SER	4.5
1	D	527	TRP	4.3

6.2 Non-standard residues in protein, DNA, RNA chains [i](#)

There are no non-standard protein/DNA/RNA residues in this entry.

6.3 Carbohydrates [i](#)

There are no monosaccharides in this entry.

6.4 Ligands [i](#)

In the following table, the Atoms column lists the number of modelled atoms in the group and the number defined in the chemical component dictionary. The B-factors column lists the minimum, median, 95th percentile and maximum values of B factors of atoms in the group. The column labelled ‘Q< 0.9’ lists the number of atoms with occupancy less than 0.9.

Mol	Type	Chain	Res	Atoms	RSCC	RSR	B-factors(\AA^2)	Q<0.9
2	NAG	C	701	14/15	0.60	0.30	51,58,62,64	0
2	NAG	D	703	14/15	0.64	0.41	55,62,64,66	0
2	NAG	D	701	14/15	0.75	0.28	52,59,62,64	0
6	EDO	C	1101	4/4	0.82	0.19	16,20,23,26	0
6	EDO	A	1101	4/4	0.82	0.21	16,16,21,24	0
2	NAG	A	704	14/15	0.84	0.22	31,37,42,44	0
2	NAG	C	702	14/15	0.86	0.14	25,29,31,33	0
2	NAG	D	702	14/15	0.86	0.15	24,26,29,32	0
5	SO4	D	1001	5/5	0.88	0.13	62,63,64,65	0
2	NAG	B	704	14/15	0.89	0.16	28,34,40,43	0
6	EDO	D	1101	4/4	0.90	0.12	12,15,16,20	0
6	EDO	B	1101	4/4	0.91	0.12	17,17,22,27	0
2	NAG	B	703	14/15	0.91	0.13	20,24,34,34	0
2	NAG	A	703	14/15	0.92	0.14	19,23,32,36	0
6	EDO	B	1102	4/4	0.92	0.12	9,16,16,21	0
2	NAG	C	703	14/15	0.93	0.17	23,25,29,32	0
5	SO4	A	1001	5/5	0.93	0.13	55,57,57,61	0
5	SO4	A	1002	5/5	0.94	0.16	30,35,37,40	0
5	SO4	C	1002	5/5	0.95	0.15	28,32,35,36	0
5	SO4	C	1001	5/5	0.95	0.13	52,52,53,56	0
2	NAG	D	704	14/15	0.95	0.09	11,15,17,19	0
2	NAG	B	701	14/15	0.95	0.08	5,8,16,17	0
2	NAG	A	702	14/15	0.96	0.07	11,15,19,19	0
5	SO4	B	1002	5/5	0.96	0.13	32,32,37,41	0
2	NAG	A	701	14/15	0.96	0.08	6,9,15,17	0
2	NAG	B	702	14/15	0.97	0.05	11,13,16,16	0
5	SO4	B	1001	5/5	0.97	0.14	55,55,56,57	0
5	SO4	D	1002	5/5	0.97	0.12	30,32,34,37	0
6	EDO	C	1102	4/4	0.97	0.09	9,12,17,21	0
2	NAG	C	704	14/15	0.97	0.09	10,11,15,16	0
4	DGJ	C	900	11/11	0.98	0.07	4,5,5,7	0
6	EDO	A	1102	4/4	0.98	0.09	7,10,11,15	0
4	DGJ	B	900	11/11	0.98	0.06	2,2,4,4	0
6	EDO	D	1102	4/4	0.98	0.09	10,13,13,18	0
4	DGJ	A	900	11/11	0.98	0.05	2,3,4,5	0
4	DGJ	D	900	11/11	0.99	0.04	2,5,6,6	0
3	CL	A	801	1/1	1.00	0.04	7,7,7,7	0
3	CL	D	801	1/1	1.00	0.02	6,6,6,6	0
3	CL	C	801	1/1	1.00	0.02	6,6,6,6	0
3	CL	B	801	1/1	1.00	0.02	5,5,5,5	0

6.5 Other polymers [i](#)

There are no such residues in this entry.