



wwPDB X-ray Structure Validation Summary Report ⓘ

Aug 8, 2020 – 08:33 PM BST

PDB ID : 6TKV
Title : Crystal structure of the human FUT8 in complex with GDP and a biantennary complex N-glycan
Authors : Garcia-Garcia, A.; Ceballos-Laita, L.; Serna, L.; Artschwager, R.; Reichardt, N.C.; Corzana, F.; Hurtado-Guerrero, R.
Deposited on : 2019-11-29
Resolution : 1.95 Å(reported)

This is a wwPDB X-ray Structure Validation Summary Report for a publicly released PDB entry.

We welcome your comments at validation@mail.wwpdb.org

A user guide is available at

<https://www.wwpdb.org/validation/2017/XrayValidationReportHelp>

with specific help available everywhere you see the ⓘ symbol.

The following versions of software and data (see [references ⓘ](#)) were used in the production of this report:

MolProbity	:	4.02b-467
Mogul	:	1.8.5 (274361), CSD as541be (2020)
Xtriage (Phenix)	:	1.13
EDS	:	2.13.1
buster-report	:	1.1.7 (2018)
Percentile statistics	:	20191225.v01 (using entries in the PDB archive December 25th 2019)
Refmac	:	5.8.0158
CCP4	:	7.0.044 (Gargrove)
Ideal geometry (proteins)	:	Engh & Huber (2001)
Ideal geometry (DNA, RNA)	:	Parkinson et al. (1996)
Validation Pipeline (wwPDB-VP)	:	2.13.1

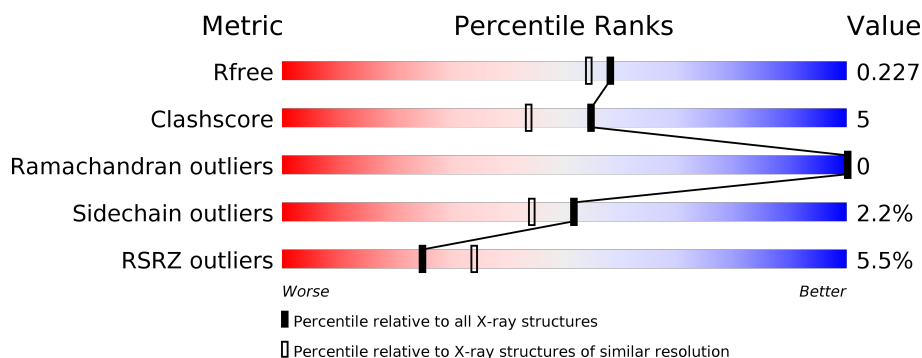
1 Overall quality at a glance

The following experimental techniques were used to determine the structure:

X-RAY DIFFRACTION

The reported resolution of this entry is 1.95 Å.

Percentile scores (ranging between 0-100) for global validation metrics of the entry are shown in the following graphic. The table shows the number of entries on which the scores are based.



Metric	Whole archive (#Entries)	Similar resolution (#Entries, resolution range(Å))
R_{free}	130704	2580 (1.96-1.96)
Clashscore	141614	2705 (1.96-1.96)
Ramachandran outliers	138981	2678 (1.96-1.96)
Sidechain outliers	138945	2678 (1.96-1.96)
RSRZ outliers	127900	2539 (1.96-1.96)

The table below summarises the geometric issues observed across the polymeric chains and their fit to the electron density. The red, orange, yellow and green segments on the lower bar indicate the fraction of residues that contain outliers for ≥ 3 , 2, 1 and 0 types of geometric quality criteria respectively. A grey segment represents the fraction of residues that are not modelled. The numeric value for each fraction is indicated below the corresponding segment, with a dot representing fractions $\leq 5\%$. The upper red bar (where present) indicates the fraction of residues that have poor fit to the electron density. The numeric value is given above the bar.

Mol	Chain	Length	Quality of chain
1	A	468	<div> <div>4%</div> <div> <div></div> <div>87%</div> <div>11%</div> </div> </div>
2	B	453	<div> <div>7%</div> <div> <div></div> <div>87%</div> <div>12%</div> </div> </div>
3	C	7	<div> <div>57%</div> <div>43%</div> </div>
3	D	7	<div> <div>71%</div> <div>29%</div> </div>

The following table lists non-polymeric compounds, carbohydrate monomers and non-standard residues in protein, DNA, RNA chains that are outliers for geometric or electron-density-fit crite-

ria:

Mol	Type	Chain	Res	Chirality	Geometry	Clashes	Electron density
5	GOL	B	604	-	-	X	-

2 Entry composition

There are 6 unique types of molecules in this entry. The entry contains 8353 atoms, of which 0 are hydrogens and 0 are deuteriums.

In the tables below, the ZeroOcc column contains the number of atoms modelled with zero occupancy, the AltConf column contains the number of residues with at least one atom in alternate conformation and the Trace column contains the number of residues modelled with at most 2 atoms.

- Molecule 1 is a protein called Alpha-(1,6)-fucosyltransferase.

Mol	Chain	Residues	Atoms					ZeroOcc	AltConf	Trace
1	A	468	Total	C	N	O	S	0	1	0
			3810	2425	670	700	15			

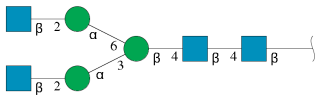
- Molecule 2 is a protein called Alpha-(1,6)-fucosyltransferase.

Mol	Chain	Residues	Atoms					ZeroOcc	AltConf	Trace
2	B	453	Total	C	N	O	S	0	2	0
			3701	2359	649	679	14			

There are 15 discrepancies between the modelled and reference sequences:

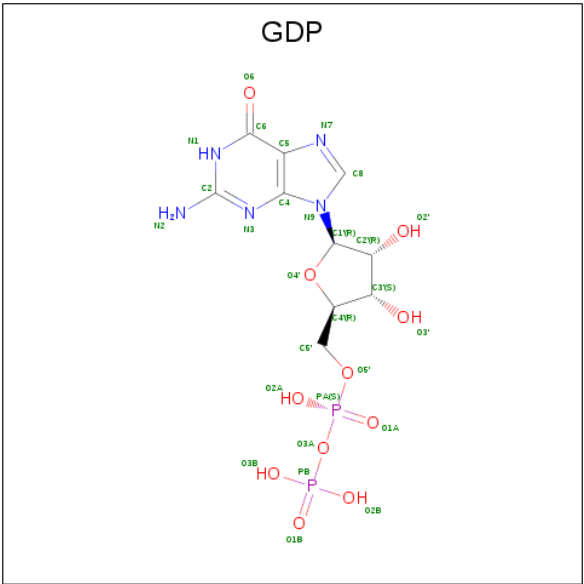
Chain	Residue	Modelled	Actual	Comment	Reference
B	?	-	ASN	deletion	UNP Q9BYC5
B	?	-	SER	deletion	UNP Q9BYC5
B	?	-	ILE	deletion	UNP Q9BYC5
B	?	-	SER	deletion	UNP Q9BYC5
B	?	-	TRP	deletion	UNP Q9BYC5
B	?	-	SER	deletion	UNP Q9BYC5
B	?	-	ALA	deletion	UNP Q9BYC5
B	?	-	GLY	deletion	UNP Q9BYC5
B	?	-	LEU	deletion	UNP Q9BYC5
B	?	-	HIS	deletion	UNP Q9BYC5
B	?	-	ASN	deletion	UNP Q9BYC5
B	?	-	ARG	deletion	UNP Q9BYC5
B	?	-	TYR	deletion	UNP Q9BYC5
B	?	-	THR	deletion	UNP Q9BYC5
B	?	-	GLU	deletion	UNP Q9BYC5

- Molecule 3 is an oligosaccharide called 2-acetamido-2-deoxy-beta-D-glucopyranose-(1-2)-alpha-D-mannopyranose-(1-3)-[2-acetamido-2-deoxy-beta-D-glucopyranose-(1-2)-alpha-D-mannopyranose-(1-6)]beta-D-mannopyranose-(1-4)-2-acetamido-2-deoxy-beta-D-glucopyranose-(1-4)-2-acetamido-2-deoxy-beta-D-glucopyranose.



Mol	Chain	Residues	Atoms				ZeroOcc	AltConf	Trace
3	C	7	Total	C	N	O	0	0	0
			90	50	4	36			
3	D	7	Total	C	N	O	0	0	0
			90	50	4	36			

- Molecule 4 is GUANOSINE-5'-DIPHOSPHATE (three-letter code: GDP) (formula: C₁₀H₁₅N₅O₁₁P₂).





Mol	Chain	Residues	Atoms			ZeroOcc	AltConf
5	A	1	Total	C	O	0	0
			6	3	3		
5	A	1	Total	C	O	0	0
			6	3	3		
5	A	1	Total	C	O	0	0
			6	3	3		
5	A	1	Total	C	O	0	0
			6	3	3		
5	B	1	Total	C	O	0	0
			6	3	3		
5	B	1	Total	C	O	0	0
			6	3	3		
5	B	1	Total	C	O	0	0
			6	3	3		
5	B	1	Total	C	O	0	0
			6	3	3		
5	B	1	Total	C	O	0	0
			6	3	3		
5	B	1	Total	C	O	0	0
			6	3	3		
5	B	1	Total	C	O	0	0
			6	3	3		

Continued on next page...

Continued from previous page...

Mol	Chain	Residues	Atoms			ZeroOcc	AltConf
5	B	1	Total	C	O	0	0
			6	3	3		
5	B	1	Total	C	O	0	0
			6	3	3		
5	B	1	Total	C	O	0	0
			6	3	3		

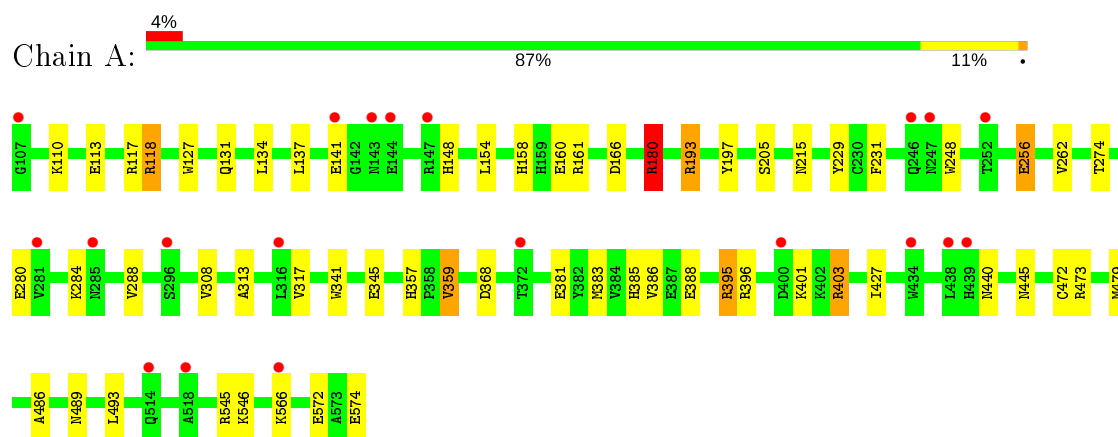
- Molecule 6 is water.

Mol	Chain	Residues	Atoms		ZeroOcc	AltConf
6	A	243	Total	O	0	0
			243	243		
6	B	261	Total	O	0	0
			261	261		

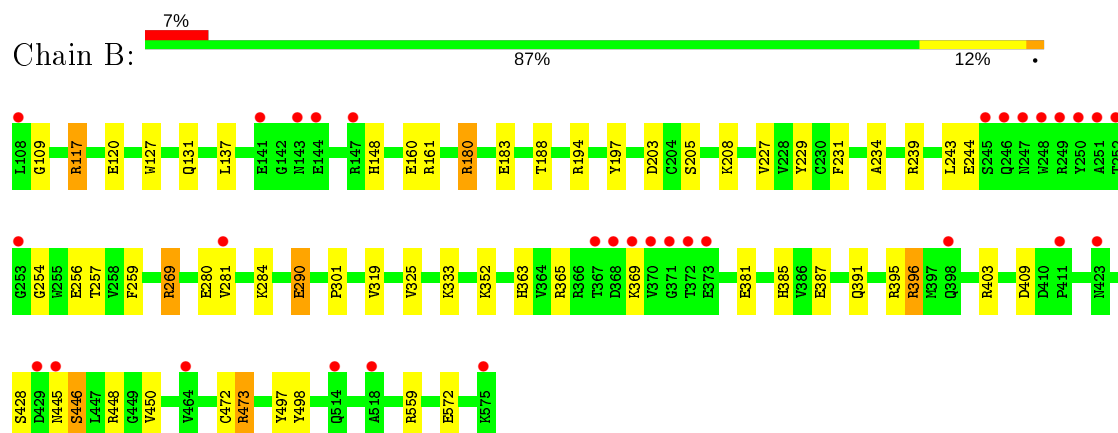
3 Residue-property plots [i](#)

These plots are drawn for all protein, RNA, DNA and oligosaccharide chains in the entry. The first graphic for a chain summarises the proportions of the various outlier classes displayed in the second graphic. The second graphic shows the sequence view annotated by issues in geometry and electron density. Residues are color-coded according to the number of geometric quality criteria for which they contain at least one outlier: green = 0, yellow = 1, orange = 2 and red = 3 or more. A red dot above a residue indicates a poor fit to the electron density ($RSRZ > 2$). Stretches of 2 or more consecutive residues without any outlier are shown as a green connector. Residues present in the sample, but not in the model, are shown in grey.

- Molecule 1: Alpha-(1,6)-fucosyltransferase



- Molecule 2: Alpha-(1,6)-fucosyltransferase



- Molecule 3: 2-acetamido-2-deoxy-beta-D-glucopyranose-(1-2)-alpha-D-mannopyranose-(1-3)-[2-acetamido-2-deoxy-beta-D-glucopyranose-(1-2)-alpha-D-mannopyranose-(1-6)]beta-D-mannopyranose-(1-4)-2-acetamido-2-deoxy-beta-D-glucopyranose-(1-4)-2-acetamido-2-deoxy-beta-D-glucopyranose



- Molecule 3: 2-acetamido-2-deoxy-beta-D-glucopyranose-(1-2)-alpha-D-mannopyranose-(1-3)-[2-acetamido-2-deoxy-beta-D-glucopyranose-(1-2)-alpha-D-mannopyranose-(1-6)]beta-D-mannopyranose-(1-4)-2-acetamido-2-deoxy-beta-D-glucopyranose-(1-4)-2-acetamido-2-deoxy-beta-D-glucopyranose

Chain D:



NAG1
NAG2
MAN3
MAN4
NAG5
MAN6
NAG7

4 Data and refinement statistics

Property	Value	Source
Space group	C 1 2 1	Depositor
Cell constants a, b, c, α , β , γ	208.04Å 68.59Å 173.92Å 90.00° 149.90° 90.00°	Depositor
Resolution (Å)	20.00 – 1.95 20.00 – 1.95	Depositor EDS
% Data completeness (in resolution range)	99.1 (20.00-1.95) 99.3 (20.00-1.95)	Depositor EDS
R_{merge}	0.13	Depositor
R_{sym}	(Not available)	Depositor
$\langle I/\sigma(I) \rangle$ ¹	1.62 (at 1.96Å)	Xtriage
Refinement program	REFMAC 5.8.0258	Depositor
R, R_{free}	0.185 , 0.219 0.194 , 0.227	Depositor DCC
R_{free} test set	3478 reflections (3.93%)	wwPDB-VP
Wilson B-factor (Å ²)	31.0	Xtriage
Anisotropy	0.539	Xtriage
Bulk solvent k_{sol} (e/Å ³), B_{sol} (Å ²)	0.42 , 59.5	EDS
L-test for twinning ²	$\langle L \rangle = 0.50$, $\langle L^2 \rangle = 0.33$	Xtriage
Estimated twinning fraction	No twinning to report.	Xtriage
F_o, F_c correlation	0.96	EDS
Total number of atoms	8353	wwPDB-VP
Average B, all atoms (Å ²)	39.0	wwPDB-VP

Xtriage's analysis on translational NCS is as follows: *The largest off-origin peak in the Patterson function is 4.07% of the height of the origin peak. No significant pseudotranslation is detected.*

¹Intensities estimated from amplitudes.

²Theoretical values of $\langle |L| \rangle$, $\langle L^2 \rangle$ for acentric reflections are 0.5, 0.333 respectively for untwinned datasets, and 0.375, 0.2 for perfectly twinned datasets.

5 Model quality [i](#)

5.1 Standard geometry [i](#)

Bond lengths and bond angles in the following residue types are not validated in this section: GDP, GOL, BMA, NAG, MAN

The Z score for a bond length (or angle) is the number of standard deviations the observed value is removed from the expected value. A bond length (or angle) with $|Z| > 5$ is considered an outlier worth inspection. RMSZ is the root-mean-square of all Z scores of the bond lengths (or angles).

Mol	Chain	Bond lengths		Bond angles	
		RMSZ	# Z >5	RMSZ	# Z >5
1	A	0.88	7/3913 (0.2%)	1.28	26/5304 (0.5%)
2	B	0.89	6/3799 (0.2%)	1.25	26/5148 (0.5%)
All	All	0.88	13/7712 (0.2%)	1.27	52/10452 (0.5%)

Chiral center outliers are detected by calculating the chiral volume of a chiral center and verifying if the center is modelled as a planar moiety or with the opposite hand. A planarity outlier is detected by checking planarity of atoms in a peptide group, atoms in a mainchain group or atoms of a sidechain that are expected to be planar.

Mol	Chain	#Chirality outliers	#Planarity outliers
1	A	0	1
2	B	0	2
All	All	0	3

The worst 5 of 13 bond length outliers are listed below:

Mol	Chain	Res	Type	Atoms	Z	Observed(Å)	Ideal(Å)
1	A	388	GLU	CD-OE1	7.37	1.33	1.25
2	B	473	ARG	CD-NE	-6.70	1.35	1.46
2	B	120	GLU	CD-OE1	6.46	1.32	1.25
1	A	256	GLU	CD-OE1	6.30	1.32	1.25
1	A	160	GLU	CD-OE1	6.20	1.32	1.25

The worst 5 of 52 bond angle outliers are listed below:

Mol	Chain	Res	Type	Atoms	Z	Observed(°)	Ideal(°)
2	B	473	ARG	NE-CZ-NH2	-28.16	106.22	120.30
1	A	180	ARG	NE-CZ-NH2	-27.12	106.74	120.30
2	B	180	ARG	NE-CZ-NH2	-23.95	108.33	120.30
1	A	117	ARG	NE-CZ-NH2	-21.57	109.52	120.30

Continued on next page...

Continued from previous page...

Mol	Chain	Res	Type	Atoms	Z	Observed(°)	Ideal(°)
2	B	180	ARG	NE-CZ-NH1	19.66	130.13	120.30

There are no chirality outliers.

All (3) planarity outliers are listed below:

Mol	Chain	Res	Type	Group
1	A	180	ARG	Sidechain
2	B	180	ARG	Sidechain
2	B	428	SER	Peptide

5.2 Too-close contacts [i](#)

In the following table, the Non-H and H(model) columns list the number of non-hydrogen atoms and hydrogen atoms in the chain respectively. The H(added) column lists the number of hydrogen atoms added and optimized by MolProbity. The Clashes column lists the number of clashes within the asymmetric unit, whereas Symm-Clashes lists symmetry related clashes.

Mol	Chain	Non-H	H(model)	H(added)	Clashes	Symm-Clashes
1	A	3810	0	3723	37	1
2	B	3701	0	3628	39	0
3	C	90	0	76	2	0
3	D	90	0	76	1	0
4	A	28	0	12	0	0
4	B	28	0	12	2	0
5	A	24	0	32	6	0
5	B	78	0	104	9	0
6	A	243	0	0	9	1
6	B	261	0	0	7	1
All	All	8353	0	7663	81	2

The all-atom clashscore is defined as the number of clashes found per 1000 atoms (including hydrogen atoms). The all-atom clashscore for this structure is 5.

The worst 5 of 81 close contacts within the same asymmetric unit are listed below, sorted by their clash magnitude.

Atom-1	Atom-2	Interatomic distance (Å)	Clash overlap (Å)
2:B:385:HIS:HE2	5:B:604:GOL:H32	1.39	0.86
2:B:244:GLU:OE2	2:B:269:ARG:HD2	1.86	0.75
1:A:110:LYS:HB3	5:A:603:GOL:H2	1.73	0.70

Continued on next page...

Continued from previous page...

Atom-1	Atom-2	Interatomic distance (Å)	Clash overlap (Å)
2:B:365:ARG:NH1	2:B:409:ASP:OD2	2.27	0.68
1:A:403:ARG:HD2	1:A:427:ILE:HD11	1.77	0.67

All (2) symmetry-related close contacts are listed below. The label for Atom-2 includes the symmetry operator and encoded unit-cell translations to be applied.

Atom-1	Atom-2	Interatomic distance (Å)	Clash overlap (Å)
1:A:545:ARG:O	1:A:545:ARG:O[2_656]	1.91	0.29
6:A:881:HOH:O	6:B:757:HOH:O[2_555]	2.18	0.02

5.3 Torsion angles [i](#)

5.3.1 Protein backbone [i](#)

In the following table, the Percentiles column shows the percent Ramachandran outliers of the chain as a percentile score with respect to all X-ray entries followed by that with respect to entries of similar resolution.

The Analysed column shows the number of residues for which the backbone conformation was analysed, and the total number of residues.

Mol	Chain	Analysed	Favoured	Allowed	Outliers	Percentiles	
1	A	467/468 (100%)	456 (98%)	11 (2%)	0	100	100
2	B	451/453 (100%)	437 (97%)	14 (3%)	0	100	100
All	All	918/921 (100%)	893 (97%)	25 (3%)	0	100	100

There are no Ramachandran outliers to report.

5.3.2 Protein sidechains [i](#)

In the following table, the Percentiles column shows the percent sidechain outliers of the chain as a percentile score with respect to all X-ray entries followed by that with respect to entries of similar resolution.

The Analysed column shows the number of residues for which the sidechain conformation was analysed, and the total number of residues.

Mol	Chain	Analysed	Rotameric	Outliers	Percentiles	
1	A	411/410 (100%)	400 (97%)	11 (3%)	44	34

Continued on next page...

Continued from previous page...

Mol	Chain	Analysed	Rotameric	Outliers	Percentiles	
2	B	400/398 (100%)	393 (98%)	7 (2%)	59	53
All	All	811/808 (100%)	793 (98%)	18 (2%)	52	44

5 of 18 residues with a non-rotameric sidechain are listed below:

Mol	Chain	Res	Type
1	A	359	VAL
1	A	401	LYS
2	B	301	PRO
1	A	284	LYS
1	A	308	VAL

Some sidechains can be flipped to improve hydrogen bonding and reduce clashes. 5 of 8 such sidechains are listed below:

Mol	Chain	Res	Type
1	A	391	GLN
2	B	148	HIS
1	A	439	HIS
1	A	357	HIS
1	A	430	ASN

5.3.3 RNA ⓘ

There are no RNA molecules in this entry.

5.4 Non-standard residues in protein, DNA, RNA chains ⓘ

There are no non-standard protein/DNA/RNA residues in this entry.

5.5 Carbohydrates ⓘ

14 monosaccharides are modelled in this entry.

In the following table, the Counts columns list the number of bonds (or angles) for which Mogul statistics could be retrieved, the number of bonds (or angles) that are observed in the model and the number of bonds (or angles) that are defined in the Chemical Component Dictionary. The Link column lists molecule types, if any, to which the group is linked. The Z score for a bond length (or angle) is the number of standard deviations the observed value is removed from the

expected value. A bond length (or angle) with $|Z| > 2$ is considered an outlier worth inspection. RMSZ is the root-mean-square of all Z scores of the bond lengths (or angles).

Mol	Type	Chain	Res	Link	Bond lengths			Bond angles		
					Counts	RMSZ	# Z > 2	Counts	RMSZ	# Z > 2
3	NAG	C	1	3	15,15,15	1.05	0	21,21,21	1.91	5 (23%)
3	NAG	C	2	3	14,14,15	2.24	3 (21%)	17,19,21	2.56	9 (52%)
3	BMA	C	3	3	11,11,12	2.27	3 (27%)	15,15,17	1.30	1 (6%)
3	MAN	C	4	3	11,11,12	2.03	3 (27%)	15,15,17	1.29	2 (13%)
3	NAG	C	5	3	14,14,15	0.87	0	17,19,21	1.33	2 (11%)
3	MAN	C	6	3	11,11,12	2.72	7 (63%)	15,15,17	1.34	3 (20%)
3	NAG	C	7	3	14,14,15	2.65	4 (28%)	17,19,21	2.31	7 (41%)
3	NAG	D	1	3	15,15,15	1.88	3 (20%)	21,21,21	4.47	9 (42%)
3	NAG	D	2	3	14,14,15	1.74	4 (28%)	17,19,21	1.42	3 (17%)
3	BMA	D	3	3	11,11,12	2.51	4 (36%)	15,15,17	1.81	4 (26%)
3	MAN	D	4	3	11,11,12	2.13	3 (27%)	15,15,17	1.33	2 (13%)
3	NAG	D	5	3	14,14,15	1.78	2 (14%)	17,19,21	1.30	2 (11%)
3	MAN	D	6	3	11,11,12	2.17	3 (27%)	15,15,17	1.59	4 (26%)
3	NAG	D	7	3	14,14,15	1.71	3 (21%)	17,19,21	1.77	6 (35%)

In the following table, the Chirals column lists the number of chiral outliers, the number of chiral centers analysed, the number of these observed in the model and the number defined in the Chemical Component Dictionary. Similar counts are reported in the Torsion and Rings columns. '-' means no outliers of that kind were identified.

Mol	Type	Chain	Res	Link	Chirals	Torsions	Rings
3	NAG	C	1	3	-	0/6/26/26	0/1/1/1
3	NAG	C	2	3	-	2/6/23/26	0/1/1/1
3	BMA	C	3	3	-	0/2/19/22	0/1/1/1
3	MAN	C	4	3	-	0/2/19/22	0/1/1/1
3	NAG	C	5	3	-	0/6/23/26	0/1/1/1
3	MAN	C	6	3	-	0/2/19/22	0/1/1/1
3	NAG	C	7	3	-	2/6/23/26	0/1/1/1
3	NAG	D	1	3	-	1/6/26/26	0/1/1/1
3	NAG	D	2	3	-	0/6/23/26	0/1/1/1
3	BMA	D	3	3	-	0/2/19/22	0/1/1/1
3	MAN	D	4	3	-	0/2/19/22	0/1/1/1
3	NAG	D	5	3	-	0/6/23/26	0/1/1/1
3	MAN	D	6	3	-	0/2/19/22	0/1/1/1
3	NAG	D	7	3	-	2/6/23/26	0/1/1/1

The worst 5 of 42 bond length outliers are listed below:

Mol	Chain	Res	Type	Atoms	Z	Observed(Å)	Ideal(Å)
3	C	7	NAG	O5-C1	7.75	1.56	1.43
3	C	2	NAG	C1-C2	-6.36	1.42	1.52
3	C	3	BMA	O5-C5	5.86	1.55	1.43
3	D	5	NAG	C1-C2	5.24	1.60	1.52
3	D	4	MAN	O3-C3	-5.11	1.30	1.43

The worst 5 of 59 bond angle outliers are listed below:

Mol	Chain	Res	Type	Atoms	Z	Observed(°)	Ideal(°)
3	D	1	NAG	C1-C2-C3	-12.39	93.65	110.54
3	D	1	NAG	C1-O5-C5	-11.07	92.78	113.66
3	D	1	NAG	O5-C1-C2	8.09	117.65	109.52
3	C	7	NAG	C1-O5-C5	5.58	119.75	112.19
3	C	2	NAG	O7-C7-N2	5.57	132.20	121.95

There are no chirality outliers.

5 of 7 torsion outliers are listed below:

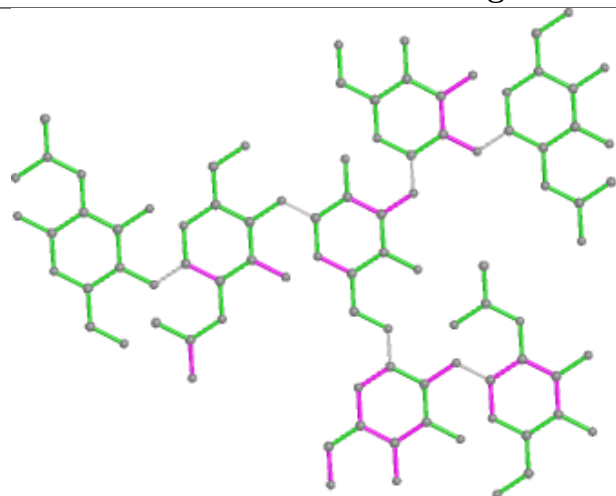
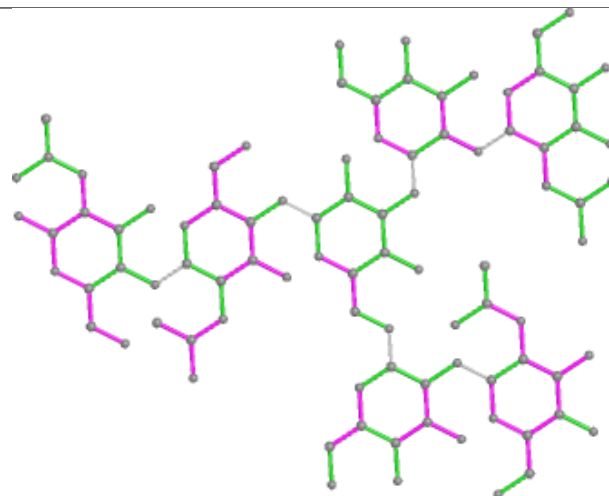
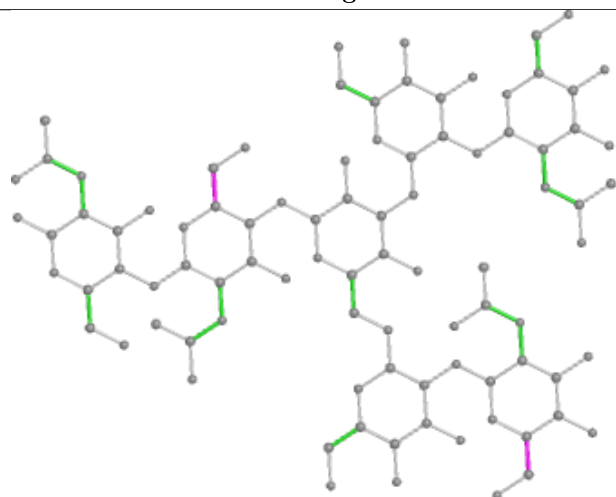
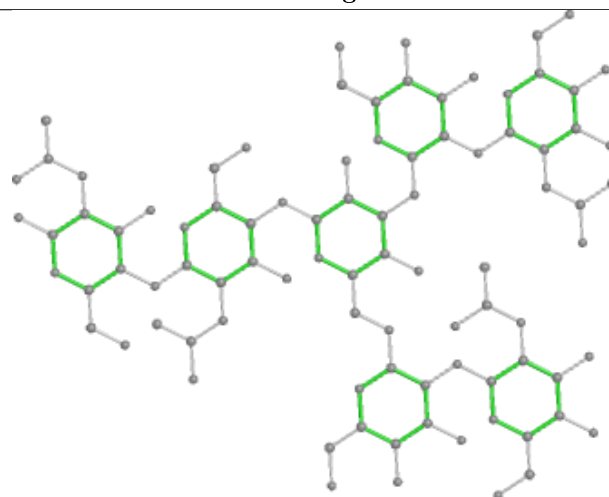
Mol	Chain	Res	Type	Atoms
3	C	2	NAG	O5-C5-C6-O6
3	D	7	NAG	C4-C5-C6-O6
3	C	2	NAG	C4-C5-C6-O6
3	C	7	NAG	C4-C5-C6-O6
3	C	7	NAG	O5-C5-C6-O6

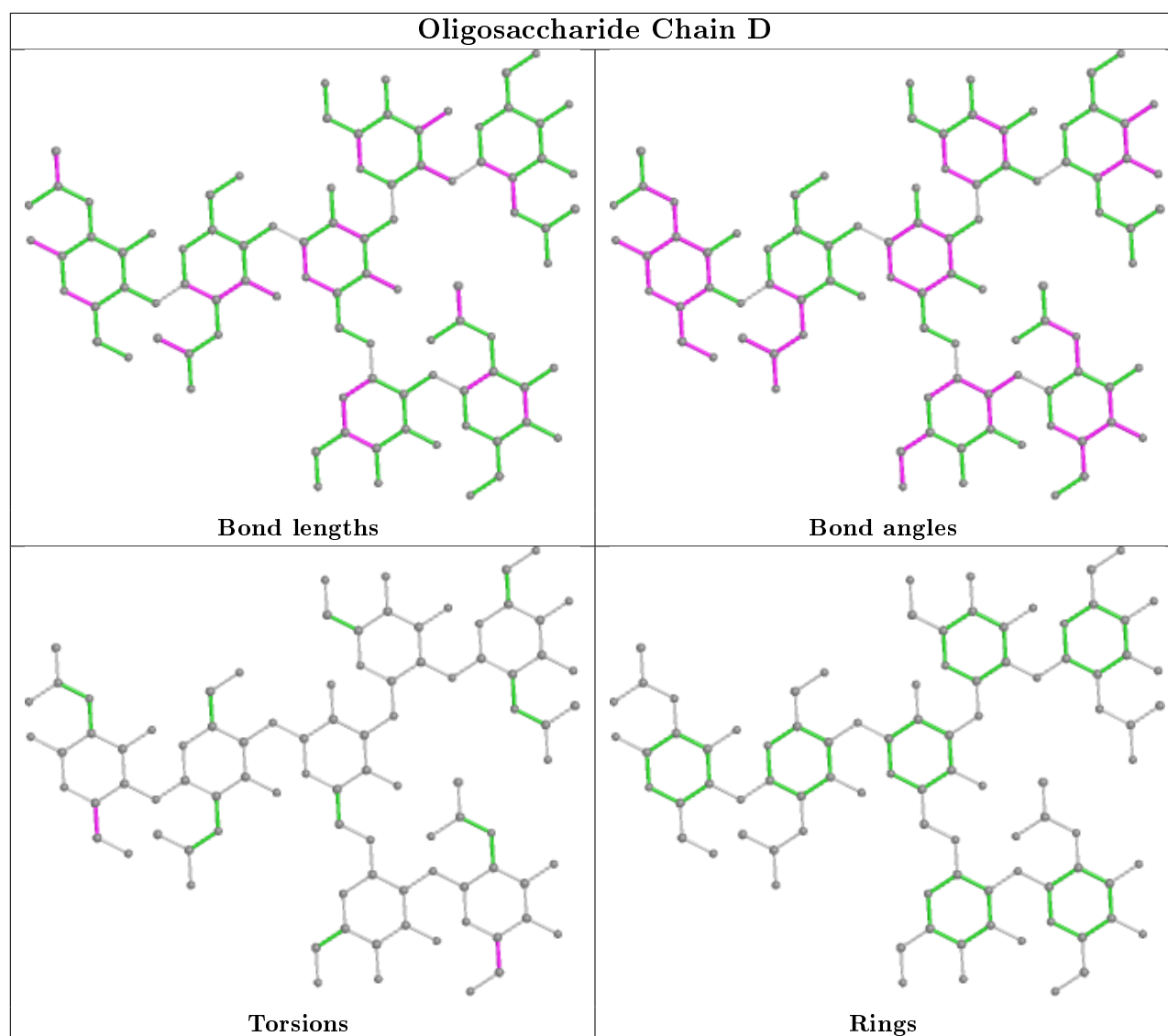
There are no ring outliers.

5 monomers are involved in 3 short contacts:

Mol	Chain	Res	Type	Clashes	Symm-Clashes
3	D	2	NAG	1	0
3	C	7	NAG	2	0
3	C	6	MAN	1	0
3	C	2	NAG	1	0
3	D	7	NAG	1	0

The following is a two-dimensional graphical depiction of Mogul quality analysis of bond lengths, bond angles, torsion angles, and ring geometry for oligosaccharide.

Oligosaccharide Chain C**Bond lengths****Bond angles****Torsions****Rings**



5.6 Ligand geometry [i](#)

19 ligands are modelled in this entry.

In the following table, the Counts columns list the number of bonds (or angles) for which Mogul statistics could be retrieved, the number of bonds (or angles) that are observed in the model and the number of bonds (or angles) that are defined in the Chemical Component Dictionary. The Link column lists molecule types, if any, to which the group is linked. The Z score for a bond length (or angle) is the number of standard deviations the observed value is removed from the expected value. A bond length (or angle) with $|Z| > 2$ is considered an outlier worth inspection. RMSZ is the root-mean-square of all Z scores of the bond lengths (or angles).

Mol	Type	Chain	Res	Link	Bond lengths			Bond angles		
					Counts	RMSZ	$\# Z > 2$	Counts	RMSZ	$\# Z > 2$
5	GOL	B	614	-	5,5,5	0.19	0	5,5,5	0.40	0
4	GDP	B	601	-	24,30,30	1.36	3 (12%)	31,47,47	2.14	10 (32%)

Mol	Type	Chain	Res	Link	Bond lengths			Bond angles		
					Counts	RMSZ	# Z > 2	Counts	RMSZ	# Z > 2
5	GOL	A	602	-	5,5,5	0.12	0	5,5,5	0.20	0
5	GOL	B	604	-	5,5,5	0.17	0	5,5,5	0.40	0
5	GOL	B	610	-	5,5,5	0.17	0	5,5,5	0.37	0
5	GOL	B	608	-	5,5,5	0.20	0	5,5,5	0.51	0
5	GOL	A	605	-	5,5,5	0.22	0	5,5,5	0.46	0
5	GOL	B	613	-	5,5,5	0.11	0	5,5,5	0.41	0
5	GOL	B	602	-	5,5,5	0.15	0	5,5,5	0.37	0
4	GDP	A	601	-	24,30,30	1.15	0	31,47,47	2.33	11 (35%)
5	GOL	B	606	-	5,5,5	0.16	0	5,5,5	0.38	0
5	GOL	B	609	-	5,5,5	0.10	0	5,5,5	0.25	0
5	GOL	A	604	-	5,5,5	0.14	0	5,5,5	0.14	0
5	GOL	B	612	-	5,5,5	0.15	0	5,5,5	0.62	0
5	GOL	A	603	-	5,5,5	0.17	0	5,5,5	0.49	0
5	GOL	B	603	-	5,5,5	0.10	0	5,5,5	0.34	0
5	GOL	B	611	-	5,5,5	0.17	0	5,5,5	0.38	0
5	GOL	B	605	-	5,5,5	0.10	0	5,5,5	0.29	0
5	GOL	B	607	-	5,5,5	0.17	0	5,5,5	0.43	0

In the following table, the Chirals column lists the number of chiral outliers, the number of chiral centers analysed, the number of these observed in the model and the number defined in the Chemical Component Dictionary. Similar counts are reported in the Torsion and Rings columns. '-' means no outliers of that kind were identified.

Mol	Type	Chain	Res	Link	Chirals	Torsions	Rings
5	GOL	B	614	-	-	4/4/4/4	-
4	GDP	B	601	-	-	7/12/32/32	0/3/3/3
5	GOL	A	602	-	-	2/4/4/4	-
5	GOL	B	604	-	-	0/4/4/4	-
5	GOL	B	610	-	-	2/4/4/4	-
5	GOL	B	608	-	-	2/4/4/4	-
5	GOL	A	605	-	-	4/4/4/4	-
5	GOL	B	613	-	-	4/4/4/4	-
5	GOL	B	602	-	-	1/4/4/4	-
4	GDP	A	601	-	-	4/12/32/32	0/3/3/3
5	GOL	B	606	-	-	4/4/4/4	-
5	GOL	B	609	-	-	2/4/4/4	-
5	GOL	A	604	-	-	0/4/4/4	-
5	GOL	B	612	-	-	3/4/4/4	-
5	GOL	A	603	-	-	2/4/4/4	-

Continued on next page...

Continued from previous page...

Mol	Type	Chain	Res	Link	Chirals	Torsions	Rings
5	GOL	B	603	-	-	3/4/4/4	-
5	GOL	B	611	-	-	3/4/4/4	-
5	GOL	B	605	-	-	2/4/4/4	-
5	GOL	B	607	-	-	4/4/4/4	-

All (3) bond length outliers are listed below:

Mol	Chain	Res	Type	Atoms	Z	Observed(Å)	Ideal(Å)
4	B	601	GDP	C6-C5	3.11	1.46	1.41
4	B	601	GDP	C2-N1	-2.33	1.31	1.35
4	B	601	GDP	C8-N7	2.16	1.38	1.34

The worst 5 of 21 bond angle outliers are listed below:

Mol	Chain	Res	Type	Atoms	Z	Observed(°)	Ideal(°)
4	B	601	GDP	C6-C5-C4	-6.27	114.81	120.80
4	A	601	GDP	C6-C5-C4	-6.18	114.90	120.80
4	A	601	GDP	C6-N1-C2	5.65	124.91	115.93
4	B	601	GDP	C2-N3-C4	5.09	121.17	115.36
4	A	601	GDP	C5-C6-N1	-4.42	117.39	123.43

There are no chirality outliers.

5 of 53 torsion outliers are listed below:

Mol	Chain	Res	Type	Atoms
5	B	614	GOL	C1-C2-C3-O3
4	B	601	GDP	PA-O3A-PB-O3B
5	A	602	GOL	O1-C1-C2-C3
5	B	610	GOL	O1-C1-C2-C3
5	B	608	GOL	O1-C1-C2-O2

There are no ring outliers.

9 monomers are involved in 17 short contacts:

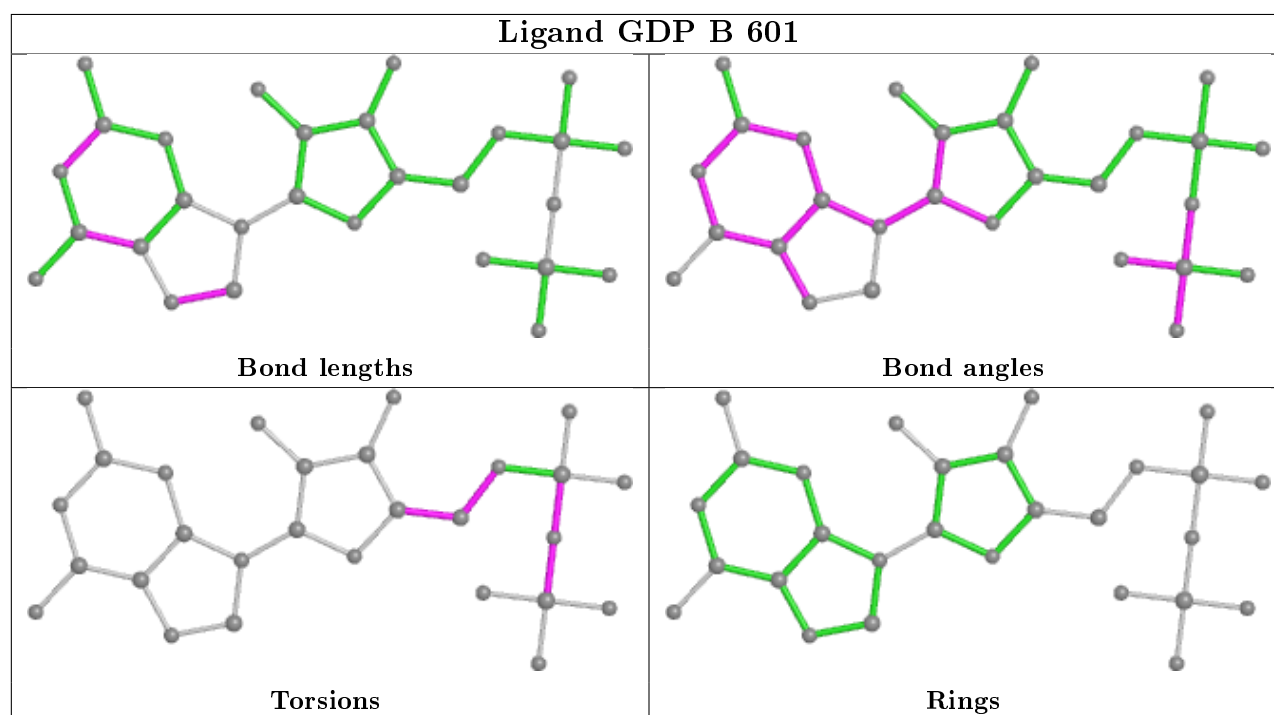
Mol	Chain	Res	Type	Clashes	Symm-Clashes
4	B	601	GDP	2	0
5	A	602	GOL	2	0
5	B	604	GOL	4	0
5	B	610	GOL	3	0
5	A	605	GOL	1	0

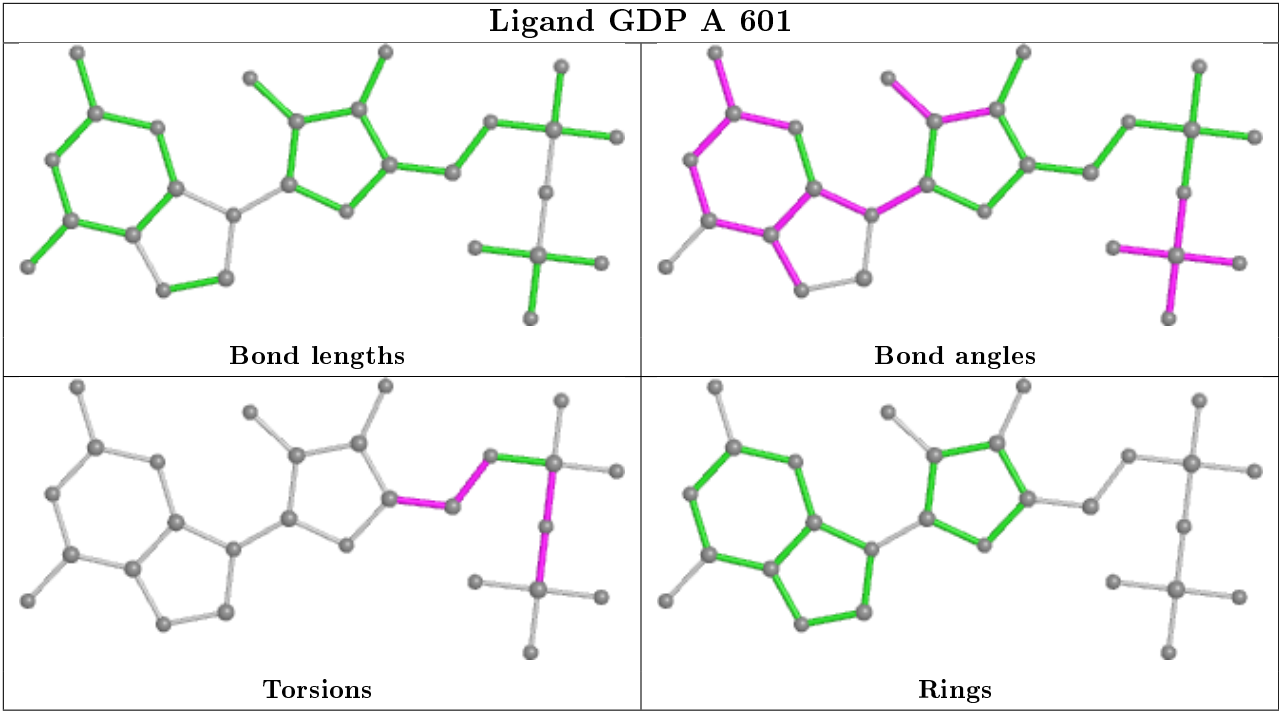
Continued on next page...

Continued from previous page...

Mol	Chain	Res	Type	Clashes	Symm-Clashes
5	B	613	GOL	1	0
5	B	606	GOL	1	0
5	A	604	GOL	1	0
5	A	603	GOL	2	0

The following is a two-dimensional graphical depiction of Mogul quality analysis of bond lengths, bond angles, torsion angles, and ring geometry for all instances of the Ligand of Interest. In addition, ligands with molecular weight > 250 and outliers as shown on the validation Tables will also be included. For torsion angles, if less than 5% of the Mogul distribution of torsion angles is within 10 degrees of the torsion angle in question, then that torsion angle is considered an outlier. Any bond that is central to one or more torsion angles identified as an outlier by Mogul will be highlighted in the graph. For rings, the root-mean-square deviation (RMSD) between the ring in question and similar rings identified by Mogul is calculated over all ring torsion angles. If the average RMSD is greater than 60 degrees and the minimal RMSD between the ring in question and any Mogul-identified rings is also greater than 60 degrees, then that ring is considered an outlier. The outliers are highlighted in purple. The color gray indicates Mogul did not find sufficient equivalents in the CSD to analyse the geometry.





5.7 Other polymers ⓘ

There are no such residues in this entry.

5.8 Polymer linkage issues ⓘ

The following chains have linkage breaks:

Mol	Chain	Number of breaks
2	B	1

All chain breaks are listed below:

Model	Chain	Residue-1	Atom-1	Residue-2	Atom-2	Distance (Å)
1	B	429:ASP	C	445:ASN	N	11.79

6 Fit of model and data [i](#)

6.1 Protein, DNA and RNA chains [i](#)

In the following table, the column labelled ‘#RSRZ> 2’ contains the number (and percentage) of RSRZ outliers, followed by percent RSRZ outliers for the chain as percentile scores relative to all X-ray entries and entries of similar resolution. The OWAB column contains the minimum, median, 95th percentile and maximum values of the occupancy-weighted average B-factor per residue. The column labelled ‘Q< 0.9’ lists the number of (and percentage) of residues with an average occupancy less than 0.9.

Mol	Chain	Analysed	<RSRZ>	#RSRZ>2	OWAB(Å ²)	Q<0.9
1	A	468/468 (100%)	0.15	20 (4%) 35 45	25, 37, 55, 69	0
2	B	453/453 (100%)	0.23	31 (6%) 17 25	24, 33, 62, 97	0
All	All	921/921 (100%)	0.19	51 (5%) 25 34	24, 35, 59, 97	0

The worst 5 of 51 RSRZ outliers are listed below:

Mol	Chain	Res	Type	RSRZ
2	B	370	VAL	9.4
2	B	445	ASN	6.9
2	B	372	THR	6.0
2	B	252	THR	5.9
2	B	246	GLN	5.8

6.2 Non-standard residues in protein, DNA, RNA chains [i](#)

There are no non-standard protein/DNA/RNA residues in this entry.

6.3 Carbohydrates [i](#)

In the following table, the Atoms column lists the number of modelled atoms in the group and the number defined in the chemical component dictionary. The B-factors column lists the minimum, median, 95th percentile and maximum values of B factors of atoms in the group. The column labelled ‘Q< 0.9’ lists the number of atoms with occupancy less than 0.9.

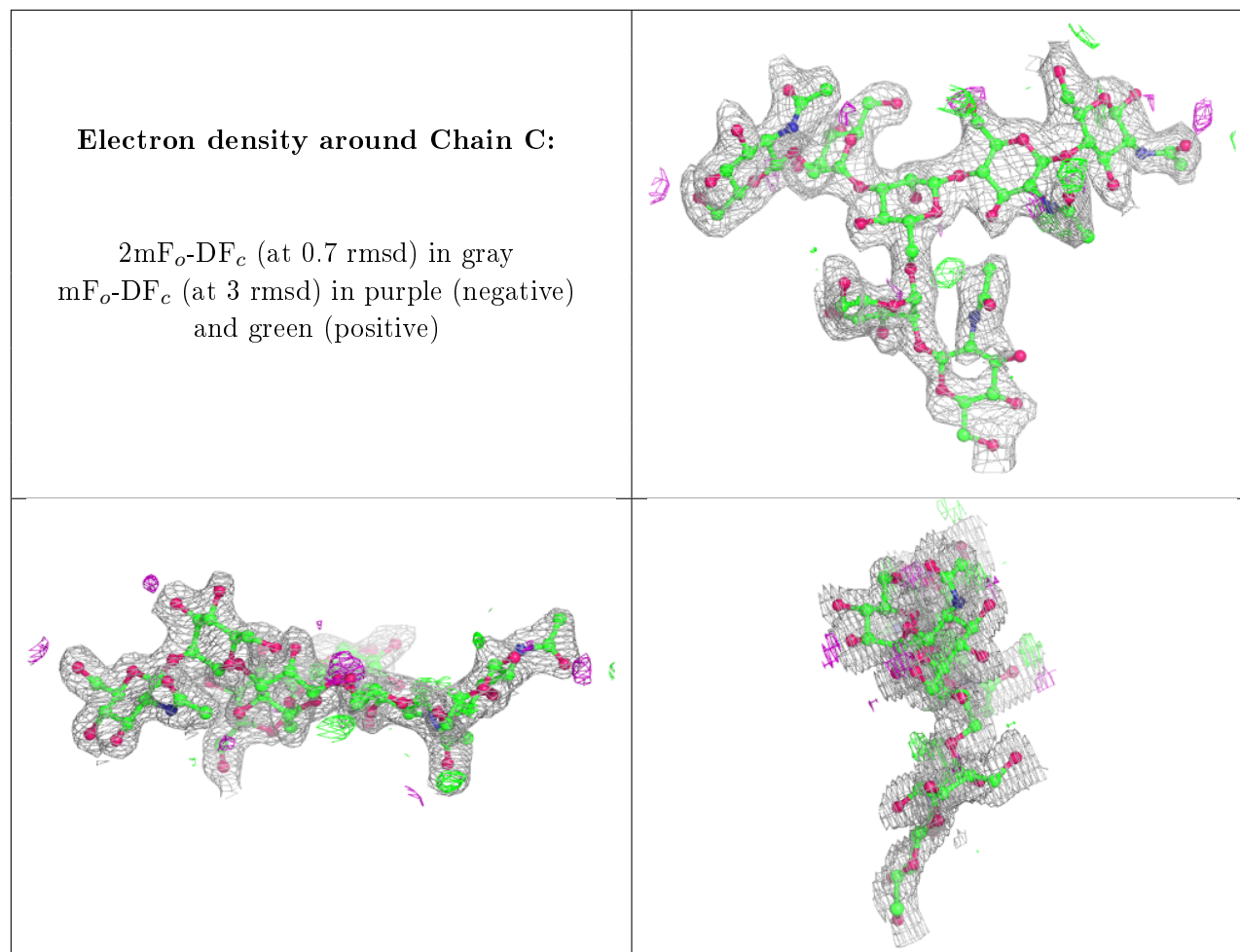
Mol	Type	Chain	Res	Atoms	RSCC	RSR	B-factors(Å ²)	Q<0.9
3	NAG	C	7	14/15	0.70	0.31	67,73,78,79	0
3	MAN	C	6	11/12	0.78	0.19	47,50,55,62	0
3	NAG	D	7	14/15	0.79	0.31	52,57,61,69	0
3	MAN	D	6	11/12	0.84	0.14	38,41,43,45	0
3	NAG	C	1	15/15	0.88	0.17	44,47,49,57	0

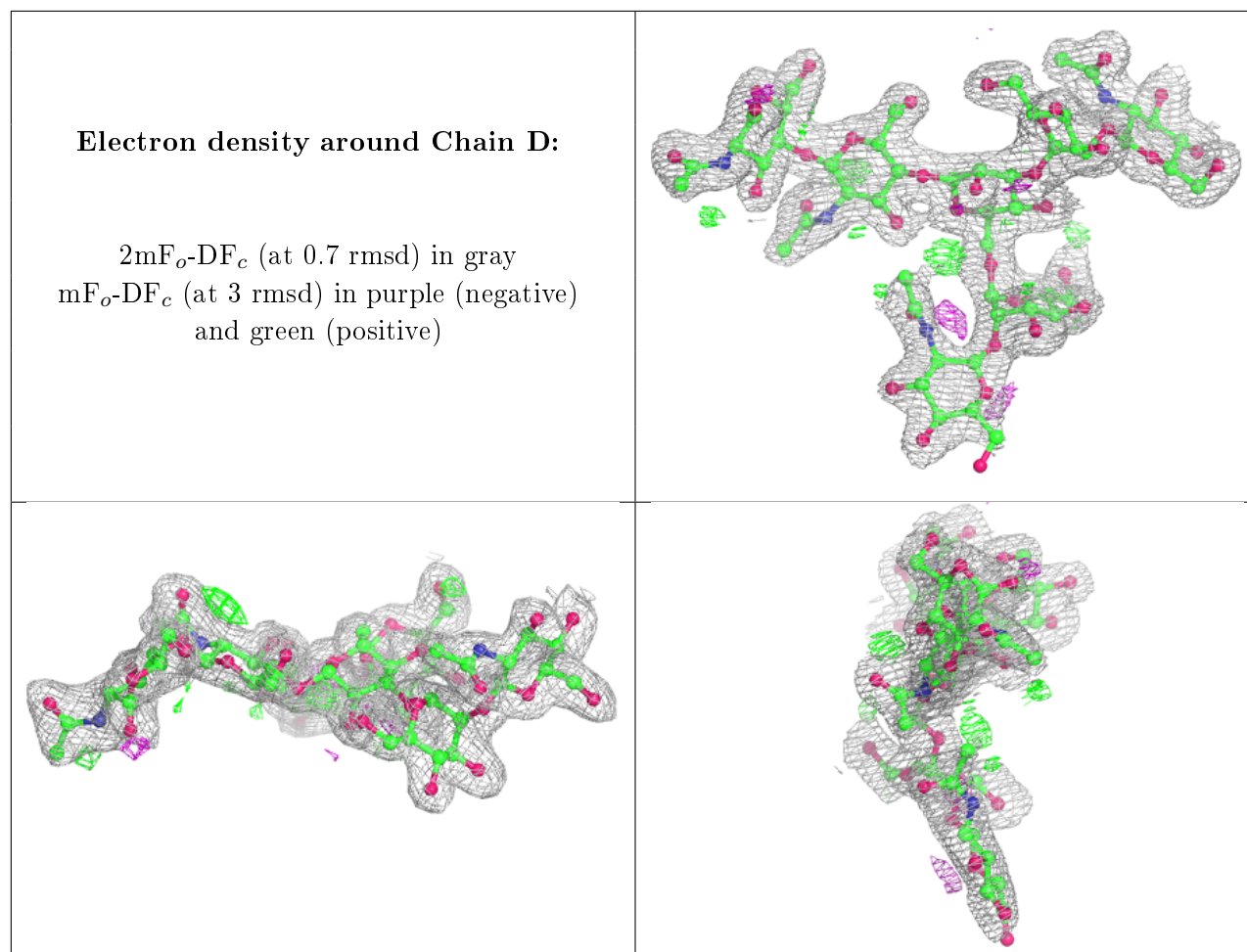
Continued on next page...

Continued from previous page...

Mol	Type	Chain	Res	Atoms	RSCC	RSR	B-factors(\AA^2)	Q<0.9
3	NAG	C	2	14/15	0.89	0.12	44,48,51,55	0
3	BMA	D	3	11/12	0.90	0.08	32,33,34,36	0
3	NAG	D	1	15/15	0.92	0.12	37,42,45,47	0
3	MAN	D	4	11/12	0.93	0.16	33,35,37,38	0
3	NAG	C	5	14/15	0.94	0.10	35,36,38,42	0
3	NAG	D	2	14/15	0.95	0.08	34,36,38,41	0
3	BMA	C	3	11/12	0.95	0.08	39,40,41,46	0
3	MAN	C	4	11/12	0.95	0.15	39,41,44,45	0
3	NAG	D	5	14/15	0.96	0.07	29,30,33,34	0

The following is a graphical depiction of the model fit to experimental electron density for oligosaccharide. Each fit is shown from different orientation to approximate a three-dimensional view.





6.4 Ligands [i](#)

In the following table, the Atoms column lists the number of modelled atoms in the group and the number defined in the chemical component dictionary. The B-factors column lists the minimum, median, 95th percentile and maximum values of B factors of atoms in the group. The column labelled 'Q< 0.9' lists the number of atoms with occupancy less than 0.9.

Mol	Type	Chain	Res	Atoms	RSCC	RSR	B-factors(Å ²)	Q<0.9
5	GOL	A	605	6/6	0.72	0.21	57,66,71,73	0
5	GOL	B	608	6/6	0.76	0.25	63,67,70,72	0
5	GOL	A	603	6/6	0.81	0.32	45,56,58,63	0
5	GOL	B	606	6/6	0.82	0.15	54,56,58,60	0
5	GOL	B	602	6/6	0.82	0.17	67,71,72,74	0
5	GOL	B	607	6/6	0.84	0.19	53,62,65,65	0
4	GDP	B	601	28/28	0.85	0.20	49,62,67,68	0
5	GOL	B	611	6/6	0.85	0.16	58,63,66,66	0
5	GOL	B	610	6/6	0.85	0.38	58,66,72,80	0
5	GOL	B	604	6/6	0.86	0.24	60,64,65,69	0
5	GOL	B	612	6/6	0.87	0.14	57,60,65,69	0

Continued on next page...

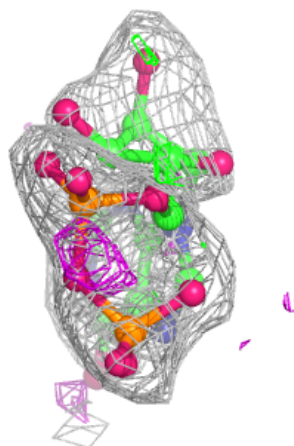
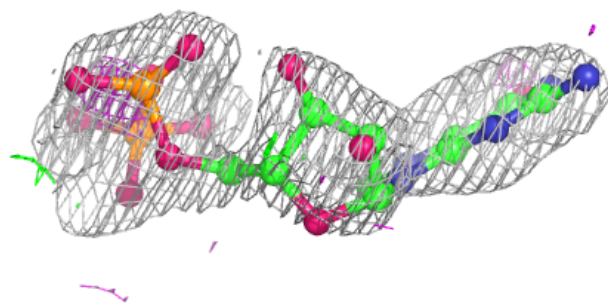
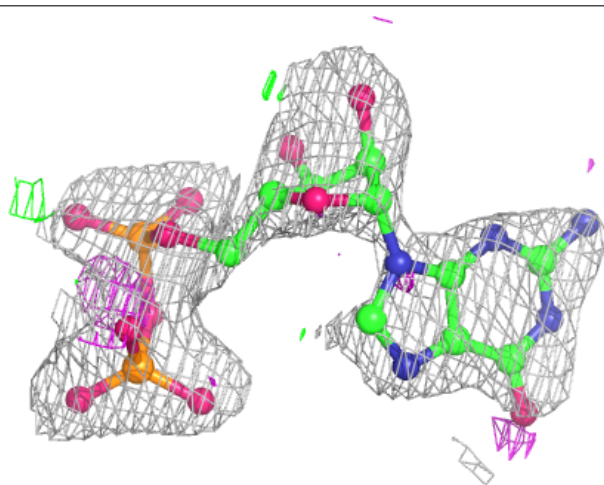
Continued from previous page...

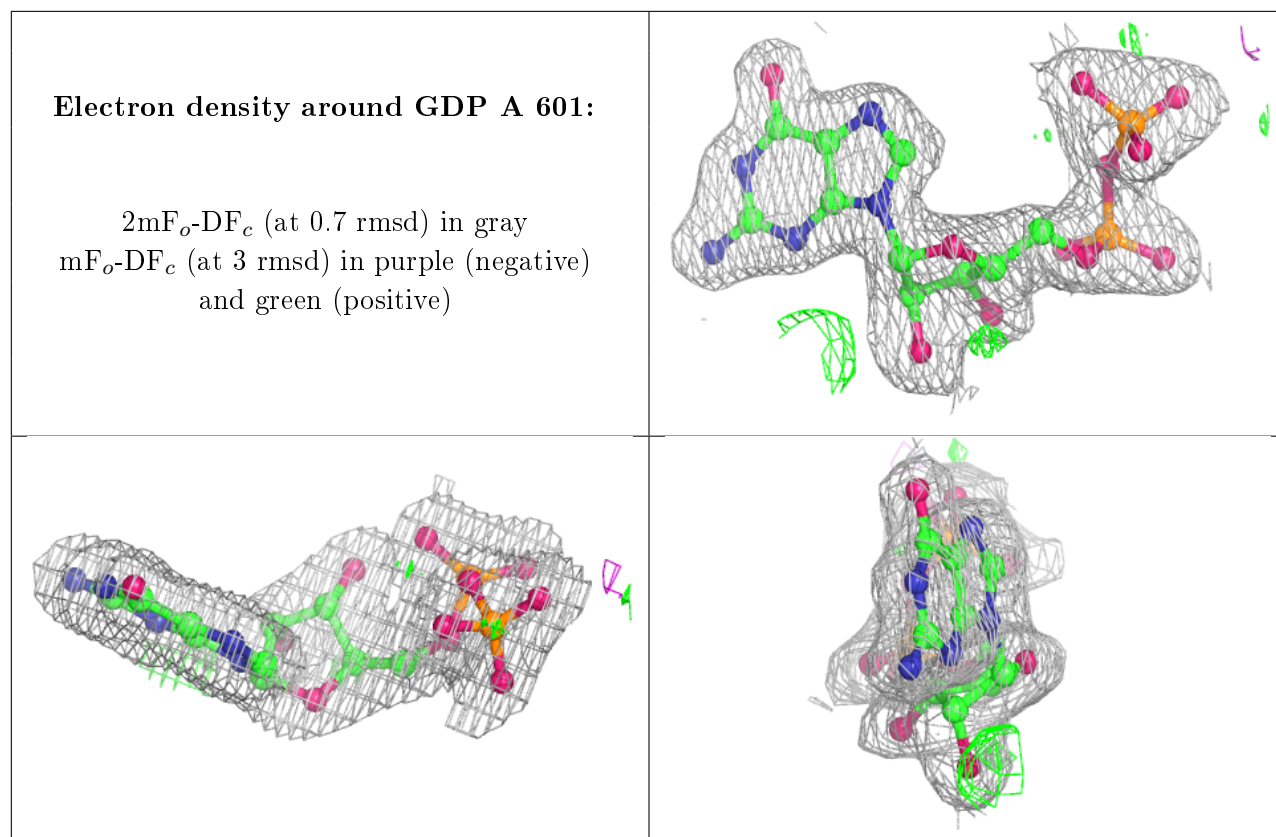
Mol	Type	Chain	Res	Atoms	RSCC	RSR	B-factors(\AA^2)	Q<0.9
5	GOL	B	609	6/6	0.87	0.16	67,69,73,77	0
5	GOL	A	602	6/6	0.89	0.18	52,59,61,61	0
5	GOL	B	614	6/6	0.91	0.22	59,61,61,62	0
5	GOL	A	604	6/6	0.91	0.13	54,60,64,67	0
5	GOL	B	613	6/6	0.92	0.14	60,62,63,64	0
5	GOL	B	605	6/6	0.93	0.23	56,63,66,67	0
5	GOL	B	603	6/6	0.94	0.16	47,51,52,56	0
4	GDP	A	601	28/28	0.97	0.12	30,32,35,37	0

The following is a graphical depiction of the model fit to experimental electron density of all instances of the Ligand of Interest. In addition, ligands with molecular weight > 250 and outliers as shown on the geometry validation Tables will also be included. Each fit is shown from different orientation to approximate a three-dimensional view.

Electron density around GDP B 601:

2mF_o-DF_c (at 0.7 rmsd) in gray
mF_o-DF_c (at 3 rmsd) in purple (negative)
and green (positive)





6.5 Other polymers [i](#)

There are no such residues in this entry.