



Full wwPDB X-ray Structure Validation Report ⓘ

May 13, 2020 – 03:26 am BST

PDB ID : 4TLB
Title : Crystal structure of N-terminal C1 domain of KaiC
Authors : Abe, J.; Hiyama, T.B.; Mukaiyama, A.; Son, S.; Akiyama, S.
Deposited on : 2014-05-29
Resolution : 1.98 Å(reported)

This is a Full wwPDB X-ray Structure Validation Report for a publicly released PDB entry.

We welcome your comments at validation@mail.wwpdb.org

A user guide is available at

<https://www.wwpdb.org/validation/2017/XrayValidationReportHelp>

with specific help available everywhere you see the ⓘ symbol.

The following versions of software and data (see [references ⓘ](#)) were used in the production of this report:

MolProbity : 4.02b-467
Mogul : 1.8.5 (274361), CSD as541be (2020)
Xtriage (Phenix) : 1.13
EDS : 2.11
buster-report : 1.1.7 (2018)
Percentile statistics : 20191225.v01 (using entries in the PDB archive December 25th 2019)
Refmac : 5.8.0158
CCP4 : 7.0.044 (Gargrove)
Ideal geometry (proteins) : Engh & Huber (2001)
Ideal geometry (DNA, RNA) : Parkinson et al. (1996)
Validation Pipeline (wwPDB-VP) : 2.11

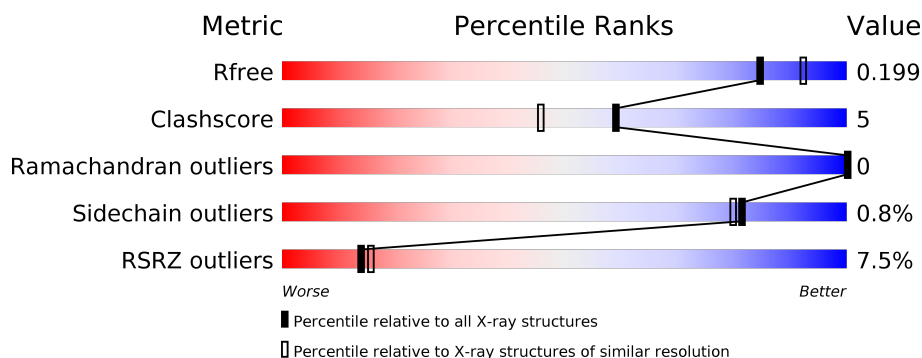
1 Overall quality at a glance

The following experimental techniques were used to determine the structure:

X-RAY DIFFRACTION

The reported resolution of this entry is 1.98 Å.

Percentile scores (ranging between 0-100) for global validation metrics of the entry are shown in the following graphic. The table shows the number of entries on which the scores are based.



Metric	Whole archive (#Entries)	Similar resolution (#Entries, resolution range(Å))
R_{free}	130704	11647 (2.00-1.96)
Clashscore	141614	1014 (1.98-1.98)
Ramachandran outliers	138981	1006 (1.98-1.98)
Sidechain outliers	138945	1006 (1.98-1.98)
RSRZ outliers	127900	11410 (2.00-1.96)

The table below summarises the geometric issues observed across the polymeric chains and their fit to the electron density. The red, orange, yellow and green segments on the lower bar indicate the fraction of residues that contain outliers for ≥ 3 , 2, 1 and 0 types of geometric quality criteria respectively. A grey segment represents the fraction of residues that are not modelled. The numeric value for each fraction is indicated below the corresponding segment, with a dot representing fractions $\leq 5\%$. The upper red bar (where present) indicates the fraction of residues that have poor fit to the electron density. The numeric value is given above the bar.

Mol	Chain	Length	Quality of chain
1	A	253	<div> <div>9%</div> <div> <div></div> <div>76%</div> <div>13%</div> <div>11%</div> </div> </div>
1	B	253	<div> <div>4%</div> <div> <div></div> <div>76%</div> <div>11%</div> <div>12%</div> </div> </div>
1	C	253	<div> <div>7%</div> <div> <div></div> <div>82%</div> <div>7%</div> <div>11%</div> </div> </div>
1	D	253	<div> <div>6%</div> <div> <div></div> <div>81%</div> <div>9%</div> <div>10%</div> </div> </div>
1	E	253	<div> <div>9%</div> <div> <div></div> <div>77%</div> <div>11%</div> <div>10%</div> </div> </div>
1	F	253	<div> <div>4%</div> <div> <div></div> <div>81%</div> <div>6%</div> <div>13%</div> </div> </div>

2 Entry composition

There are 5 unique types of molecules in this entry. The entry contains 12055 atoms, of which 0 are hydrogens and 0 are deuteriums.

In the tables below, the ZeroOcc column contains the number of atoms modelled with zero occupancy, the AltConf column contains the number of residues with at least one atom in alternate conformation and the Trace column contains the number of residues modelled with at most 2 atoms.

- Molecule 1 is a protein called Circadian clock protein kinase KaiC.

Mol	Chain	Residues	Atoms					ZeroOcc	AltConf	Trace
1	A	224	Total	C	N	O	S	0	5	0
			1803	1153	311	335	4			
1	B	222	Total	C	N	O	S	0	7	0
			1799	1155	309	329	6			
1	C	225	Total	C	N	O	S	0	6	0
			1828	1168	318	338	4			
1	D	228	Total	C	N	O	S	0	9	0
			1847	1181	317	345	4			
1	E	227	Total	C	N	O	S	0	10	0
			1855	1190	318	343	4			
1	F	220	Total	C	N	O	S	0	3	0
			1760	1127	303	326	4			

There are 6 discrepancies between the modelled and reference sequences:

Chain	Residue	Modelled	Actual	Comment	Reference
A	146	PRO	SER	engineered mutation	UNP Q79PF4
B	146	PRO	SER	engineered mutation	UNP Q79PF4
C	146	PRO	SER	engineered mutation	UNP Q79PF4
D	146	PRO	SER	engineered mutation	UNP Q79PF4
E	146	PRO	SER	engineered mutation	UNP Q79PF4
F	146	PRO	SER	engineered mutation	UNP Q79PF4

- Molecule 2 is MAGNESIUM ION (three-letter code: MG) (formula: Mg).

Mol	Chain	Residues	Atoms		ZeroOcc	AltConf
2	D	1	Total	Mg	0	0
			1	1		
2	E	1	Total	Mg	0	0
			1	1		
2	B	1	Total	Mg	0	0
			1	1		

Continued on next page...

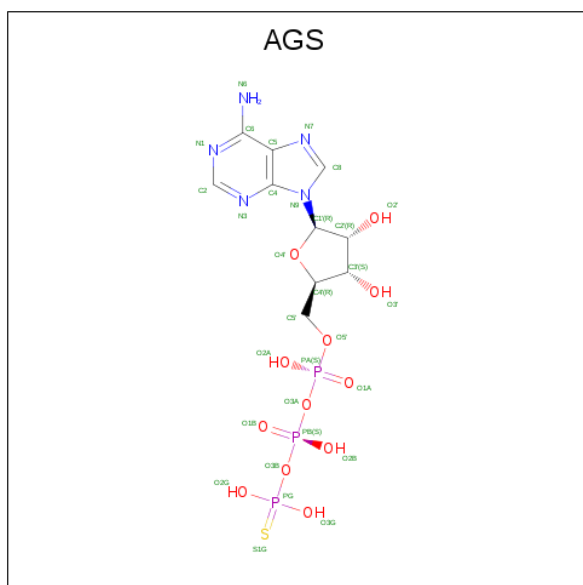
Continued from previous page...

Mol	Chain	Residues	Atoms		ZeroOcc	AltConf
2	C	1	Total	Mg	0	0
			1	1		
2	A	1	Total	Mg	0	0
			1	1		
2	F	1	Total	Mg	0	0
			1	1		

- Molecule 3 is CHLORIDE ION (three-letter code: CL) (formula: Cl).

Mol	Chain	Residues	Atoms		ZeroOcc	AltConf
3	D	1	Total	Cl	0	0
			1	1		
3	E	1	Total	Cl	0	0
			1	1		
3	B	1	Total	Cl	0	0
			1	1		
3	C	1	Total	Cl	0	0
			1	1		
3	A	1	Total	Cl	0	0
			1	1		
3	F	1	Total	Cl	0	0
			1	1		

- Molecule 4 is PHOSPHOTHIOPHOSPHORIC ACID-ADENYLATE ESTER (three-letter code: AGS) (formula: C₁₀H₁₆N₅O₁₂P₃S).



Mol	Chain	Residues	Atoms						ZeroOcc	AltConf
4	A	1	Total 31	C 10	N 5	O 12	P 3	S 1	0	0
4	B	1	Total 31	C 10	N 5	O 12	P 3	S 1	0	0
4	C	1	Total 31	C 10	N 5	O 12	P 3	S 1	0	0
4	D	1	Total 31	C 10	N 5	O 12	P 3	S 1	0	0
4	E	1	Total 31	C 10	N 5	O 12	P 3	S 1	0	0
4	F	1	Total 31	C 10	N 5	O 12	P 3	S 1	0	0

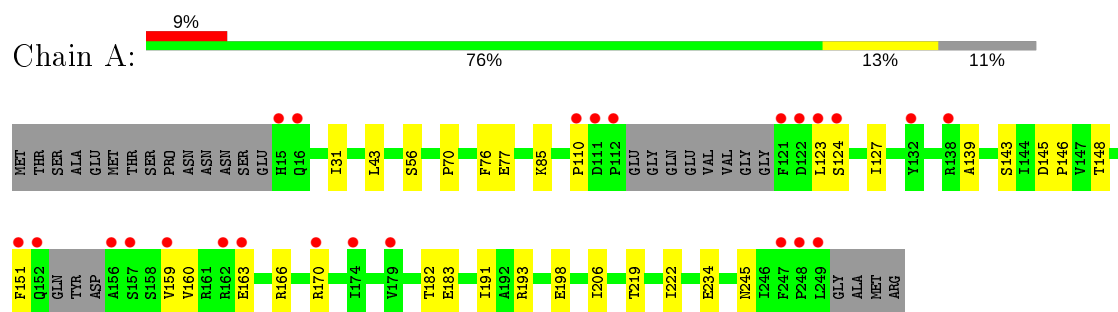
- Molecule 5 is water.

Mol	Chain	Residues	Atoms		ZeroOcc	AltConf
5	A	126	Total 126	O 126	0	0
5	B	183	Total 183	O 183	0	0
5	C	160	Total 160	O 160	0	0
5	D	171	Total 171	O 171	0	0
5	E	163	Total 163	O 163	0	0
5	F	162	Total 162	O 162	0	0

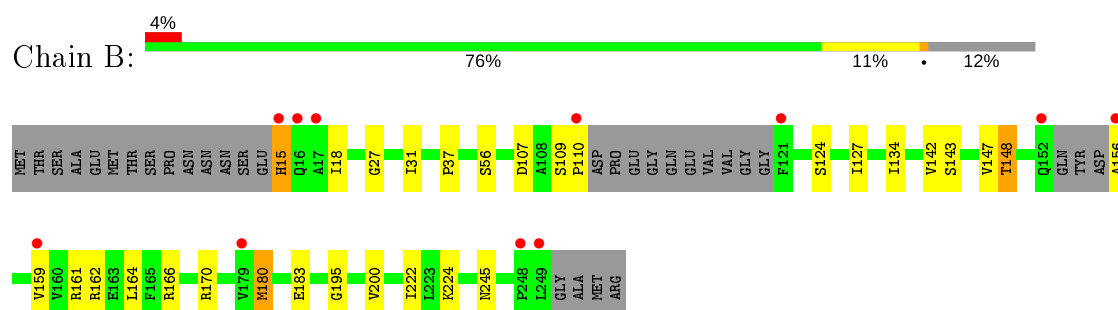
3 Residue-property plots [i](#)

These plots are drawn for all protein, RNA and DNA chains in the entry. The first graphic for a chain summarises the proportions of the various outlier classes displayed in the second graphic. The second graphic shows the sequence view annotated by issues in geometry and electron density. Residues are color-coded according to the number of geometric quality criteria for which they contain at least one outlier: green = 0, yellow = 1, orange = 2 and red = 3 or more. A red dot above a residue indicates a poor fit to the electron density ($RSRZ > 2$). Stretches of 2 or more consecutive residues without any outlier are shown as a green connector. Residues present in the sample, but not in the model, are shown in grey.

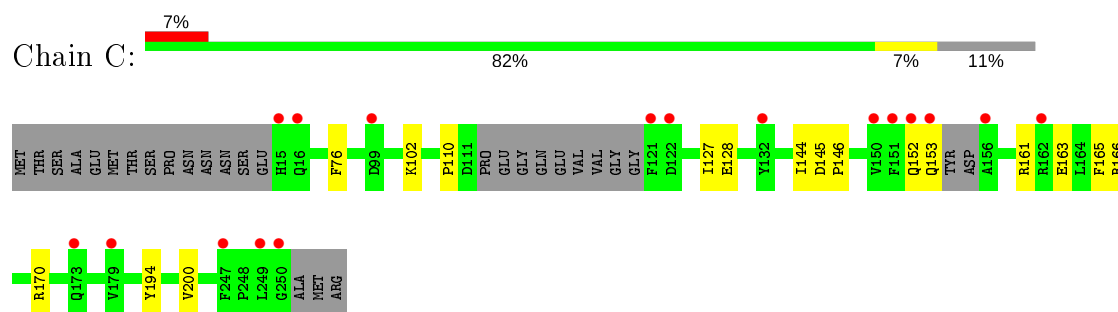
- Molecule 1: Circadian clock protein kinase KaiC



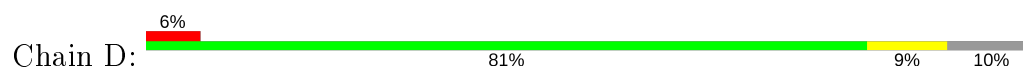
- Molecule 1: Circadian clock protein kinase KaiC

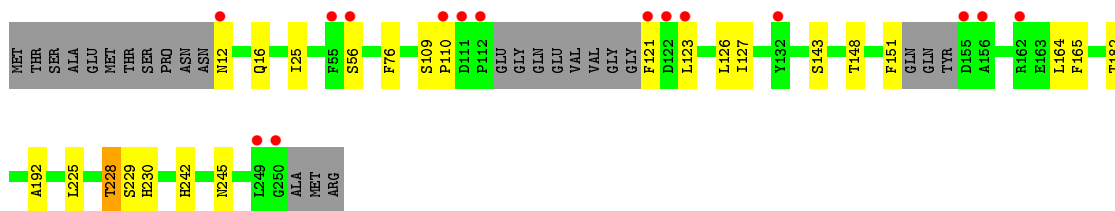


- Molecule 1: Circadian clock protein kinase KaiC

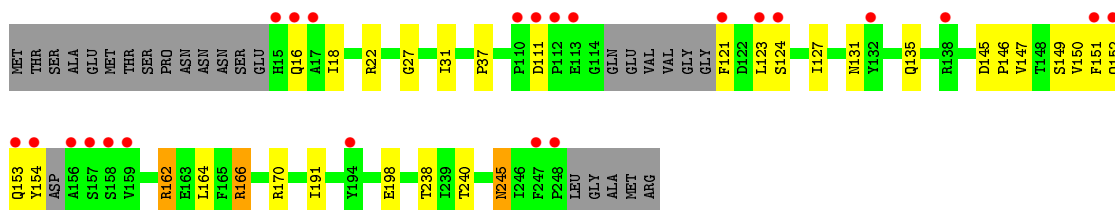
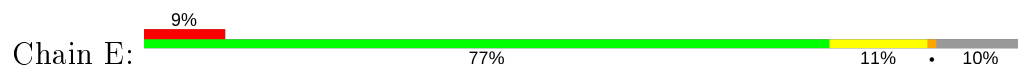


- Molecule 1: Circadian clock protein kinase KaiC

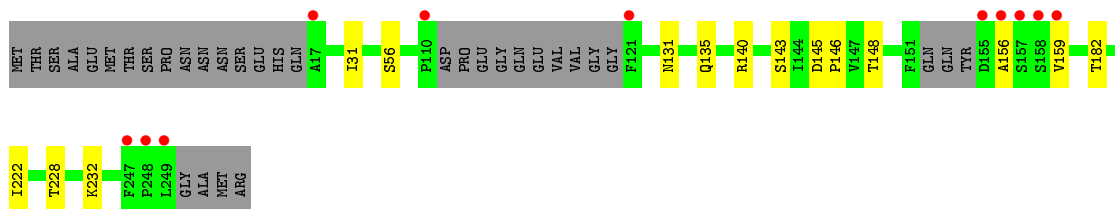
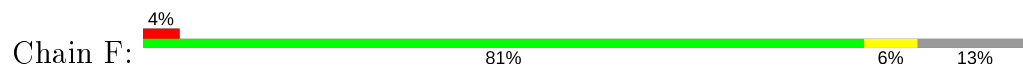




- Molecule 1: Circadian clock protein kinase KaiC



- Molecule 1: Circadian clock protein kinase KaiC



4 Data and refinement statistics

Property	Value	Source
Space group	P 21 21 21	Depositor
Cell constants a, b, c, α , β , γ	80.06Å 133.56Å 150.84Å 90.00° 90.00° 90.00°	Depositor
Resolution (Å)	29.43 – 1.98 29.43 – 1.98	Depositor EDS
% Data completeness (in resolution range)	99.6 (29.43-1.98) 99.6 (29.43-1.98)	Depositor EDS
R_{merge}	(Not available)	Depositor
R_{sym}	(Not available)	Depositor
$\langle I/\sigma(I) \rangle$ ¹	13.76 (at 1.98Å)	Xtriage
Refinement program	PHENIX (phenix.refine: 1.8.4_1496)	Depositor
R, R_{free}	0.163 , 0.199 0.164 , 0.199	Depositor DCC
R_{free} test set	5612 reflections (5.01%)	wwPDB-VP
Wilson B-factor (Å ²)	19.8	Xtriage
Anisotropy	0.075	Xtriage
Bulk solvent k_{sol} (e/Å ³), B_{sol} (Å ²)	0.35 , 54.6	EDS
L-test for twinning ²	$\langle L \rangle = 0.50$, $\langle L^2 \rangle = 0.33$	Xtriage
Estimated twinning fraction	No twinning to report.	Xtriage
F_o, F_c correlation	0.96	EDS
Total number of atoms	12055	wwPDB-VP
Average B, all atoms (Å ²)	28.0	wwPDB-VP

Xtriage's analysis on translational NCS is as follows: *The largest off-origin peak in the Patterson function is 3.10% of the height of the origin peak. No significant pseudotranslation is detected.*

¹Intensities estimated from amplitudes.

²Theoretical values of $\langle |L| \rangle$, $\langle L^2 \rangle$ for acentric reflections are 0.5, 0.333 respectively for untwinned datasets, and 0.375, 0.2 for perfectly twinned datasets.

5 Model quality [i](#)

5.1 Standard geometry [i](#)

Bond lengths and bond angles in the following residue types are not validated in this section: MG, AGS, CL

The Z score for a bond length (or angle) is the number of standard deviations the observed value is removed from the expected value. A bond length (or angle) with $|Z| > 5$ is considered an outlier worth inspection. RMSZ is the root-mean-square of all Z scores of the bond lengths (or angles).

Mol	Chain	Bond lengths		Bond angles	
		RMSZ	$\# Z > 5$	RMSZ	$\# Z > 5$
1	A	0.37	0/1850	0.53	0/2496
1	B	0.42	0/1851	0.56	0/2495
1	C	0.42	0/1872	0.57	0/2524
1	D	0.41	0/1907	0.56	0/2574
1	E	0.44	0/1919	0.57	1/2590 (0.0%)
1	F	0.45	0/1799	0.58	0/2427
All	All	0.42	0/11198	0.56	1/15106 (0.0%)

Chiral center outliers are detected by calculating the chiral volume of a chiral center and verifying if the center is modelled as a planar moiety or with the opposite hand. A planarity outlier is detected by checking planarity of atoms in a peptide group, atoms in a mainchain group or atoms of a sidechain that are expected to be planar.

Mol	Chain	#Chirality outliers	#Planarity outliers
1	B	0	1

There are no bond length outliers.

All (1) bond angle outliers are listed below:

Mol	Chain	Res	Type	Atoms	Z	Observed($^{\circ}$)	Ideal($^{\circ}$)
1	E	166	ARG	NE-CZ-NH1	-5.89	117.35	120.30

There are no chirality outliers.

All (1) planarity outliers are listed below:

Mol	Chain	Res	Type	Group
1	B	15	HIS	Peptide

5.2 Too-close contacts ⓘ

In the following table, the Non-H and H(model) columns list the number of non-hydrogen atoms and hydrogen atoms in the chain respectively. The H(added) column lists the number of hydrogen atoms added and optimized by MolProbity. The Clashes column lists the number of clashes within the asymmetric unit, whereas Symm-Clashes lists symmetry related clashes.

Mol	Chain	Non-H	H(model)	H(added)	Clashes	Symm-Clashes
1	A	1803	0	1832	20	0
1	B	1799	0	1848	22	0
1	C	1828	0	1854	11	0
1	D	1847	0	1881	20	0
1	E	1855	0	1891	28	0
1	F	1760	0	1793	10	0
2	A	1	0	0	0	0
2	B	1	0	0	0	0
2	C	1	0	0	0	0
2	D	1	0	0	0	0
2	E	1	0	0	0	0
2	F	1	0	0	0	0
3	A	1	0	0	0	0
3	B	1	0	0	0	0
3	C	1	0	0	0	0
3	D	1	0	0	0	0
3	E	1	0	0	0	0
3	F	1	0	0	0	0
4	A	31	0	12	1	0
4	B	31	0	12	0	0
4	C	31	0	12	0	0
4	D	31	0	12	0	0
4	E	31	0	12	0	0
4	F	31	0	12	0	0
5	A	126	0	0	2	0
5	B	183	0	0	1	0
5	C	160	0	0	1	0
5	D	171	0	0	2	0
5	E	163	0	0	1	0
5	F	162	0	0	3	0
All	All	12055	0	11171	105	0

The all-atom clashscore is defined as the number of clashes found per 1000 atoms (including hydrogen atoms). The all-atom clashscore for this structure is 5.

All (105) close contacts within the same asymmetric unit are listed below, sorted by their clash magnitude.

Atom-1	Atom-2	Interatomic distance (Å)	Clash overlap (Å)
1:E:162:ARG:HH12	1:E:166:ARG:HH12	1.33	0.76
1:E:123:LEU:HD23	1:E:166:ARG:HE	1.49	0.76
1:C:128:GLU:OE2	1:C:170:ARG:NH2	2.19	0.75
1:A:127:ILE:HG21	1:A:170:ARG:HD3	1.67	0.75
1:B:124:SER:HB3	1:B:166:ARG:HH22	1.52	0.74
1:E:162:ARG:HH12	1:E:166:ARG:NH1	1.87	0.72
1:E:162:ARG:HG2	1:E:162:ARG:HH11	1.54	0.72
1:E:238:THR:OG1	1:E:245[B]:ASN:OD1	2.08	0.71
1:A:193:ARG:NH1	1:B:195:GLY:O	2.28	0.66
1:B:164:LEU:HD11	1:B:180[B]:MET:HE1	1.77	0.66
1:B:110:PRO:HG2	1:C:165:PHE:CE2	2.30	0.66
1:E:22:ARG:NH2	5:E:543:HOH:O	2.28	0.66
1:C:163:GLU:OE2	1:C:166:ARG:NH2	2.30	0.65
1:E:127:ILE:HD13	1:E:170:ARG:HD3	1.79	0.63
1:E:162:ARG:NH1	1:E:166:ARG:HH12	1.96	0.62
1:A:77:GLU:OE2	1:B:161:ARG:NH2	2.31	0.62
1:D:151:PHE:HZ	1:D:164[B]:LEU:HG	1.63	0.62
1:E:162:ARG:HH12	1:E:166:ARG:NH2	1.98	0.61
1:E:162:ARG:NH1	1:E:166:ARG:HH22	1.98	0.61
1:D:16:GLN:HB2	1:D:228[B]:THR:HG23	1.83	0.61
1:E:162:ARG:HG2	1:E:162:ARG:NH1	2.15	0.61
1:A:76:PHE:O	1:A:110:PRO:HD3	2.01	0.60
1:E:162:ARG:HH12	1:E:166:ARG:HH22	1.49	0.60
1:E:162:ARG:HH12	1:E:166:ARG:CZ	2.16	0.57
4:A:303:AGS:O3G	1:B:224:LYS:NZ	2.36	0.56
1:C:152:GLN:HA	1:C:194:TYR:OH	2.05	0.56
1:D:182[B]:THR:HG21	1:D:192:ALA:HB1	1.87	0.56
1:B:18:ILE:HD12	1:B:37:PRO:HB3	1.88	0.56
1:E:123:LEU:HD23	1:E:166:ARG:NE	2.21	0.55
1:E:240:THR:HG23	1:E:245[B]:ASN:HD21	1.70	0.55
1:D:12:ASN:ND2	5:D:401:HOH:O	2.38	0.55
1:B:148:THR:HG21	1:B:183:GLU:H	1.72	0.54
1:E:153:GLN:HG3	1:E:154:TYR:CD2	2.42	0.54
1:E:121:PHE:CE2	1:E:150:VAL:HG13	2.43	0.54
1:D:25:ILE:O	5:D:560:HOH:O	2.18	0.54
1:D:16:GLN:OE1	1:D:228[B]:THR:HG21	2.09	0.53
1:A:85:LYS:HE3	1:B:18:ILE:HG22	1.90	0.52
1:F:56[A]:SER:HB2	1:F:143:SER:HB3	1.92	0.52
1:E:16:GLN:HA	1:E:16:GLN:NE2	2.25	0.52
1:B:127:ILE:CG2	1:B:170:ARG:HG2	2.39	0.52
1:A:148:THR:HG21	1:A:183:GLU:H	1.75	0.52
1:F:228[B]:THR:HG23	5:F:544:HOH:O	2.09	0.51

Continued on next page...

Continued from previous page...

Atom-1	Atom-2	Interatomic distance (Å)	Clash overlap (Å)
1:E:191[B]:ILE:HG21	1:E:198:GLU:HB3	1.91	0.51
1:A:124:SER:OG	1:A:166:ARG:NH2	2.44	0.51
1:A:245:ASN:HB2	5:A:474:HOH:O	2.10	0.50
1:D:151:PHE:CZ	1:D:164[B]:LEU:HG	2.45	0.50
1:F:232:LYS:NZ	5:F:533:HOH:O	2.40	0.49
1:B:107:ASP:OD1	1:B:109:SER:HB2	2.12	0.49
1:F:140:ARG:NH1	5:F:549:HOH:O	2.45	0.49
1:B:156:ALA:O	1:B:159:VAL:HG12	2.13	0.49
1:D:76:PHE:O	1:D:110:PRO:HD3	2.13	0.48
1:E:131:ASN:O	1:E:135:GLN:HG2	2.14	0.48
1:D:56[A]:SER:HB2	1:D:143:SER:HB3	1.96	0.47
1:B:56[A]:SER:HB2	1:B:143:SER:HB3	1.97	0.47
1:E:27:GLY:O	1:E:31[B]:ILE:HG12	2.14	0.47
1:D:225[B]:LEU:HD23	1:D:230:HIS:HB3	1.97	0.47
1:D:225[B]:LEU:HD11	1:D:228[B]:THR:HB	1.97	0.47
1:D:12:ASN:OD1	1:D:16:GLN:NE2	2.48	0.47
1:F:31:ILE:HG22	1:F:222:ILE:HD12	1.96	0.47
1:B:27:GLY:O	1:B:31[B]:ILE:HG12	2.15	0.47
1:B:159:VAL:HG23	1:B:162:ARG:NH2	2.30	0.47
1:F:148:THR:HG23	1:F:182:THR:HG22	1.96	0.47
1:B:127:ILE:HG23	1:B:170:ARG:HG2	1.96	0.46
1:C:127:ILE:CG2	1:C:170:ARG:HG2	2.45	0.46
1:C:128:GLU:CD	1:C:170:ARG:HH22	2.18	0.46
1:D:228[B]:THR:HG22	1:D:229:SER:N	2.30	0.46
1:A:70:PRO:HB2	1:A:139:ALA:HA	1.99	0.45
1:A:123:LEU:O	1:A:127:ILE:HG13	2.17	0.45
1:A:77:GLU:OE1	1:B:200:VAL:HG12	2.16	0.44
1:F:156:ALA:HB3	1:F:159:VAL:HG12	1.99	0.44
1:D:121:PHE:HE2	1:D:126:LEU:HD22	1.83	0.44
1:A:31:ILE:HG22	1:A:222:ILE:HD12	2.00	0.43
1:E:124:SER:HA	1:E:127:ILE:HD12	2.00	0.43
1:E:149:SER:HA	1:E:152:GLN:HB2	2.00	0.43
1:C:161:ARG:HG3	1:C:200:VAL:HG11	2.00	0.43
1:A:191:ILE:HG23	1:A:206[B]:ILE:HD11	2.00	0.43
1:C:110:PRO:HG2	1:D:165:PHE:CE2	2.53	0.43
1:E:121:PHE:N	1:E:153:GLN:HE22	2.17	0.43
1:E:151:PHE:CZ	1:E:164:LEU:HD13	2.54	0.43
1:F:145:ASP:HA	1:F:146:PRO:HA	1.82	0.43
1:A:198:GLU:OE2	5:A:522:HOH:O	2.21	0.43
1:D:76:PHE:O	1:D:109:SER:HA	2.19	0.42
1:C:145:ASP:HA	1:C:146:PRO:HA	1.84	0.42

Continued on next page...

Continued from previous page...

Atom-1	Atom-2	Interatomic distance (Å)	Clash overlap (Å)
1:D:148:THR:OG1	1:D:182[B]:THR:HG23	2.19	0.42
1:F:56[B]:SER:HB3	1:F:143:SER:HB3	2.01	0.42
1:A:56[A]:SER:HB2	1:A:143:SER:HB3	2.02	0.42
1:A:151:PHE:HB3	1:A:160:VAL:HG22	2.02	0.42
1:B:245:ASN:HB2	5:B:406:HOH:O	2.19	0.41
1:D:123:LEU:HD23	1:D:127:ILE:HG13	2.02	0.41
1:B:134:ILE:HD11	1:B:142:VAL:HG21	2.02	0.41
1:E:18:ILE:HG12	1:E:37:PRO:HB3	2.02	0.41
1:A:145:ASP:HA	1:A:146:PRO:HA	1.84	0.41
1:A:159:VAL:O	1:A:163:GLU:HG2	2.20	0.41
1:F:131:ASN:O	1:F:135:GLN:HG2	2.19	0.41
1:C:76:PHE:HE2	1:C:144:ILE:HG23	1.86	0.41
1:E:145:ASP:HA	1:E:146:PRO:HA	1.85	0.41
1:E:166:ARG:HB2	1:E:166:ARG:NH1	2.36	0.41
1:B:56[B]:SER:HB3	1:B:143:SER:HB3	2.01	0.41
1:A:219:THR:HB	1:A:234:GLU:HB3	2.02	0.41
1:B:31[A]:ILE:HG22	1:B:222:ILE:HD12	2.03	0.41
1:D:242[B]:HIS:ND1	1:D:245:ASN:OD1	2.53	0.41
1:A:43:LEU:HD11	1:A:182:THR:CG2	2.51	0.41
1:B:147:VAL:HG11	1:B:180[B]:MET:HE3	2.03	0.40
1:C:102:LYS:HE2	5:C:501:HOH:O	2.21	0.40
1:D:164[B]:LEU:HA	1:D:164[B]:LEU:HD23	1.95	0.40

There are no symmetry-related clashes.

5.3 Torsion angles [i](#)

5.3.1 Protein backbone [i](#)

In the following table, the Percentiles column shows the percent Ramachandran outliers of the chain as a percentile score with respect to all X-ray entries followed by that with respect to entries of similar resolution.

The Analysed column shows the number of residues for which the backbone conformation was analysed, and the total number of residues.

Mol	Chain	Analysed	Favoured	Allowed	Outliers	Percentiles	
1	A	223/253 (88%)	218 (98%)	5 (2%)	0	100	100
1	B	223/253 (88%)	215 (96%)	8 (4%)	0	100	100
1	C	225/253 (89%)	219 (97%)	6 (3%)	0	100	100

Continued on next page...

Continued from previous page...

Mol	Chain	Analysed	Favoured	Allowed	Outliers	Percentiles	
1	D	231/253 (91%)	224 (97%)	7 (3%)	0	100	100
1	E	231/253 (91%)	226 (98%)	5 (2%)	0	100	100
1	F	217/253 (86%)	212 (98%)	5 (2%)	0	100	100
All	All	1350/1518 (89%)	1314 (97%)	36 (3%)	0	100	100

There are no Ramachandran outliers to report.

5.3.2 Protein sidechains ⓘ

In the following table, the Percentiles column shows the percent sidechain outliers of the chain as a percentile score with respect to all X-ray entries followed by that with respect to entries of similar resolution.

The Analysed column shows the number of residues for which the sidechain conformation was analysed, and the total number of residues.

Mol	Chain	Analysed	Rotameric	Outliers	Percentiles	
1	A	199/217 (92%)	199 (100%)	0	100	100
1	B	199/217 (92%)	195 (98%)	4 (2%)	55	48
1	C	200/217 (92%)	199 (100%)	1 (0%)	88	87
1	D	206/217 (95%)	204 (99%)	2 (1%)	76	73
1	E	206/217 (95%)	201 (98%)	5 (2%)	49	41
1	F	193/217 (89%)	193 (100%)	0	100	100
All	All	1203/1302 (92%)	1191 (99%)	12 (1%)	81	73

All (12) residues with a non-rotameric sidechain are listed below:

Mol	Chain	Res	Type
1	B	15	HIS
1	B	148	THR
1	B	180[A]	MET
1	B	180[B]	MET
1	C	153	GLN
1	D	228[A]	THR
1	D	228[B]	THR
1	E	111	ASP
1	E	147	VAL
1	E	162	ARG

Continued on next page...

Continued from previous page...

Mol	Chain	Res	Type
1	E	245[A]	ASN
1	E	245[B]	ASN

Some sidechains can be flipped to improve hydrogen bonding and reduce clashes. All (1) such sidechains are listed below:

Mol	Chain	Res	Type
1	E	16	GLN

5.3.3 RNA [i](#)

There are no RNA molecules in this entry.

5.4 Non-standard residues in protein, DNA, RNA chains [i](#)

There are no non-standard protein/DNA/RNA residues in this entry.

5.5 Carbohydrates [i](#)

There are no carbohydrates in this entry.

5.6 Ligand geometry [i](#)

Of 18 ligands modelled in this entry, 12 are monoatomic - leaving 6 for Mogul analysis.

In the following table, the Counts columns list the number of bonds (or angles) for which Mogul statistics could be retrieved, the number of bonds (or angles) that are observed in the model and the number of bonds (or angles) that are defined in the Chemical Component Dictionary. The Link column lists molecule types, if any, to which the group is linked. The Z score for a bond length (or angle) is the number of standard deviations the observed value is removed from the expected value. A bond length (or angle) with $|Z| > 2$ is considered an outlier worth inspection. RMSZ is the root-mean-square of all Z scores of the bond lengths (or angles).

Mol	Type	Chain	Res	Link	Bond lengths			Bond angles		
					Counts	RMSZ	$\# Z > 2$	Counts	RMSZ	$\# Z > 2$
4	AGS	F	301	2	26,33,33	0.74	0	26,52,52	1.01	2 (7%)
4	AGS	B	303	2	26,33,33	0.78	0	26,52,52	0.94	2 (7%)
4	AGS	E	303	2	26,33,33	0.62	0	26,52,52	1.02	2 (7%)
4	AGS	D	303	2	26,33,33	0.78	1 (3%)	26,52,52	0.99	3 (11%)
4	AGS	A	303	2	26,33,33	0.74	0	26,52,52	0.89	2 (7%)

Mol	Type	Chain	Res	Link	Bond lengths			Bond angles		
					Counts	RMSZ	# Z > 2	Counts	RMSZ	# Z > 2
4	AGS	C	303	2	26,33,33	0.77	0	26,52,52	1.04	2 (7%)

In the following table, the Chirals column lists the number of chiral outliers, the number of chiral centers analysed, the number of these observed in the model and the number defined in the Chemical Component Dictionary. Similar counts are reported in the Torsion and Rings columns. '-' means no outliers of that kind were identified.

Mol	Type	Chain	Res	Link	Chirals	Torsions	Rings
4	AGS	F	301	2	-	7/17/38/38	0/3/3/3
4	AGS	B	303	2	-	6/17/38/38	0/3/3/3
4	AGS	E	303	2	-	5/17/38/38	0/3/3/3
4	AGS	D	303	2	-	8/17/38/38	0/3/3/3
4	AGS	A	303	2	-	7/17/38/38	0/3/3/3
4	AGS	C	303	2	-	3/17/38/38	0/3/3/3

All (1) bond length outliers are listed below:

Mol	Chain	Res	Type	Atoms	Z	Observed(Å)	Ideal(Å)
4	D	303	AGS	PG-S1G	2.09	1.95	1.90

All (13) bond angle outliers are listed below:

Mol	Chain	Res	Type	Atoms	Z	Observed(°)	Ideal(°)
4	F	301	AGS	O2G-PG-O3B	3.14	115.11	104.64
4	D	303	AGS	O2G-PG-O3B	2.84	114.12	104.64
4	C	303	AGS	O2G-PG-O3B	2.65	113.48	104.64
4	E	303	AGS	O2G-PG-O3B	2.60	113.33	104.64
4	B	303	AGS	C5-C6-N6	2.47	124.10	120.35
4	A	303	AGS	C5-C6-N6	2.46	124.09	120.35
4	E	303	AGS	C5-C6-N6	2.40	124.00	120.35
4	B	303	AGS	O2G-PG-O3B	2.33	112.41	104.64
4	C	303	AGS	C5-C6-N6	2.33	123.89	120.35
4	D	303	AGS	C5-C6-N6	2.32	123.88	120.35
4	F	301	AGS	C5-C6-N6	2.27	123.81	120.35
4	A	303	AGS	O2G-PG-O3B	2.18	111.91	104.64
4	D	303	AGS	C4-C5-N7	2.04	111.53	109.40

There are no chirality outliers.

All (36) torsion outliers are listed below:

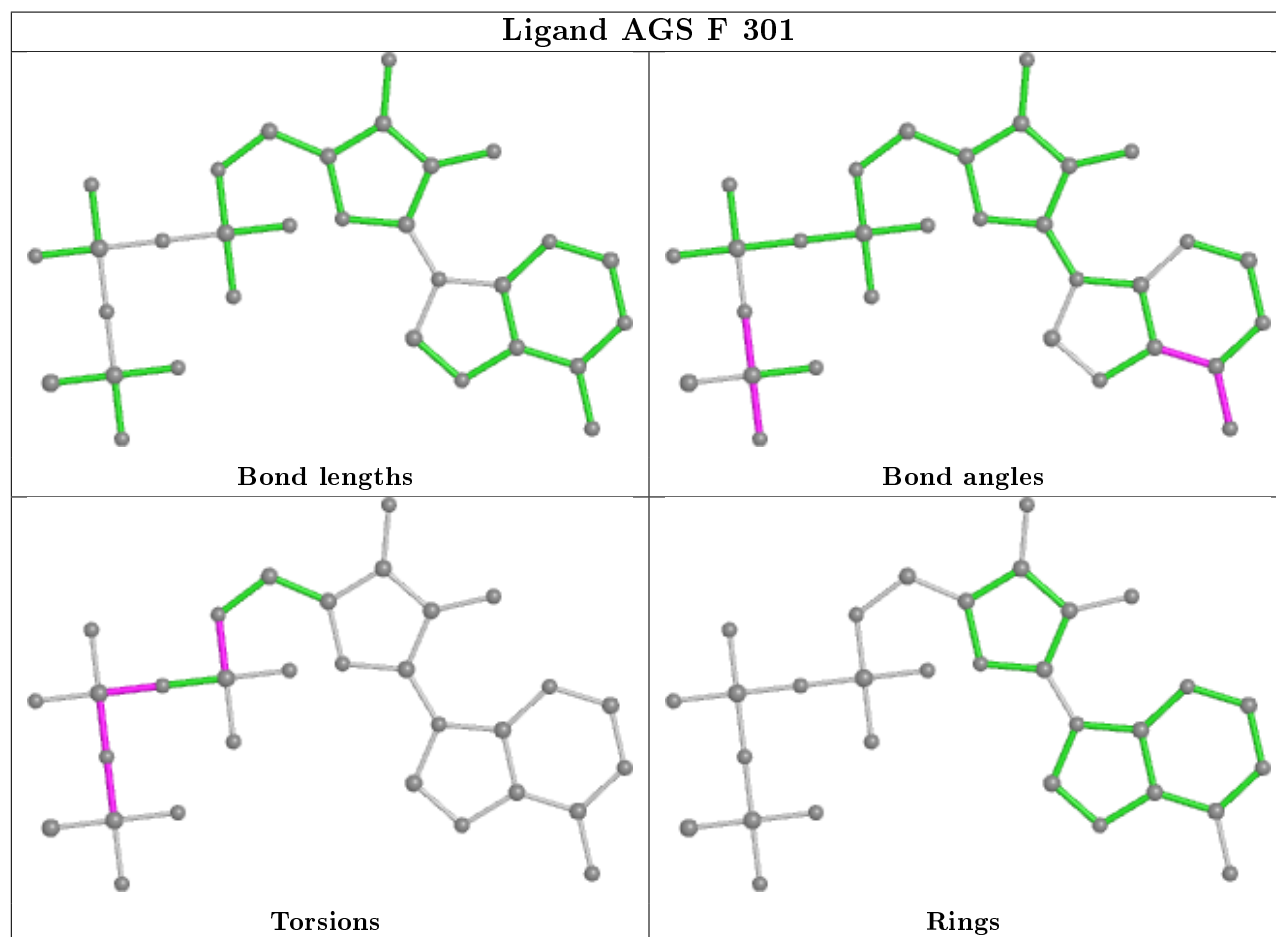
Mol	Chain	Res	Type	Atoms
4	F	301	AGS	PB-O3B-PG-O2G
4	F	301	AGS	PB-O3B-PG-O3G
4	D	303	AGS	PB-O3B-PG-O2G
4	D	303	AGS	PB-O3B-PG-O3G
4	D	303	AGS	C5'-O5'-PA-O1A
4	B	303	AGS	PB-O3B-PG-O2G
4	B	303	AGS	PB-O3B-PG-O3G
4	B	303	AGS	C5'-O5'-PA-O2A
4	E	303	AGS	PB-O3B-PG-O2G
4	E	303	AGS	PB-O3B-PG-O3G
4	A	303	AGS	PB-O3B-PG-O2G
4	A	303	AGS	PB-O3B-PG-O3G
4	A	303	AGS	C5'-O5'-PA-O2A
4	B	303	AGS	PA-O3A-PB-O1B
4	C	303	AGS	PA-O3A-PB-O1B
4	F	301	AGS	C5'-O5'-PA-O3A
4	D	303	AGS	C5'-O5'-PA-O3A
4	B	303	AGS	C5'-O5'-PA-O3A
4	A	303	AGS	C5'-O5'-PA-O3A
4	F	301	AGS	C5'-O5'-PA-O2A
4	D	303	AGS	C5'-O5'-PA-O2A
4	B	303	AGS	C5'-O5'-PA-O1A
4	E	303	AGS	PA-O3A-PB-O2B
4	A	303	AGS	PA-O3A-PB-O2B
4	D	303	AGS	PG-O3B-PB-O2B
4	C	303	AGS	PB-O3B-PG-O3G
4	D	303	AGS	PA-O3A-PB-O1B
4	D	303	AGS	PA-O3A-PB-O2B
4	C	303	AGS	PA-O3A-PB-O2B
4	F	301	AGS	PG-O3B-PB-O2B
4	E	303	AGS	PG-O3B-PB-O1B
4	E	303	AGS	C5'-O5'-PA-O3A
4	F	301	AGS	PA-O3A-PB-O2B
4	A	303	AGS	PA-O3A-PB-O1B
4	F	301	AGS	C5'-O5'-PA-O1A
4	A	303	AGS	C5'-O5'-PA-O1A

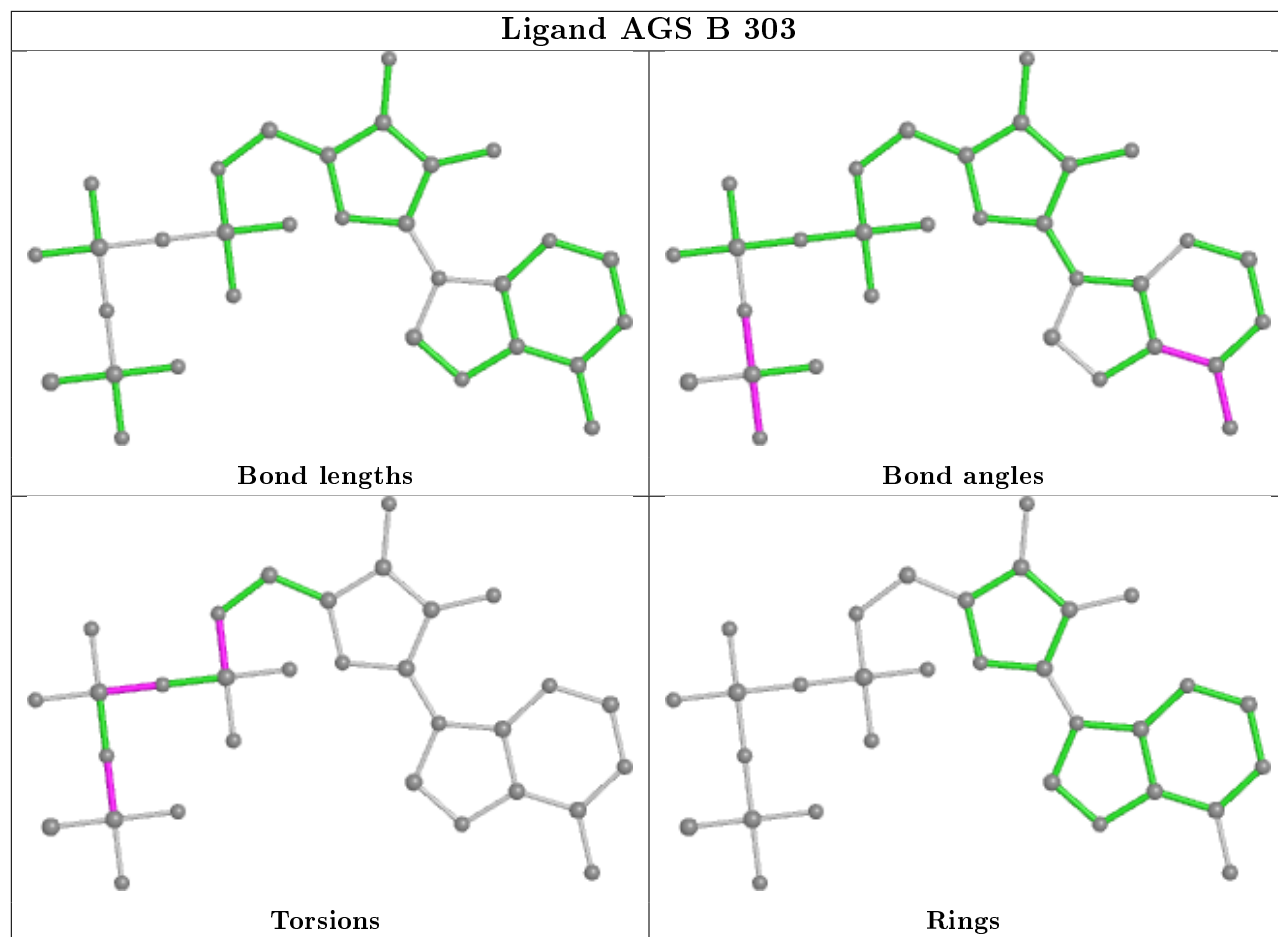
There are no ring outliers.

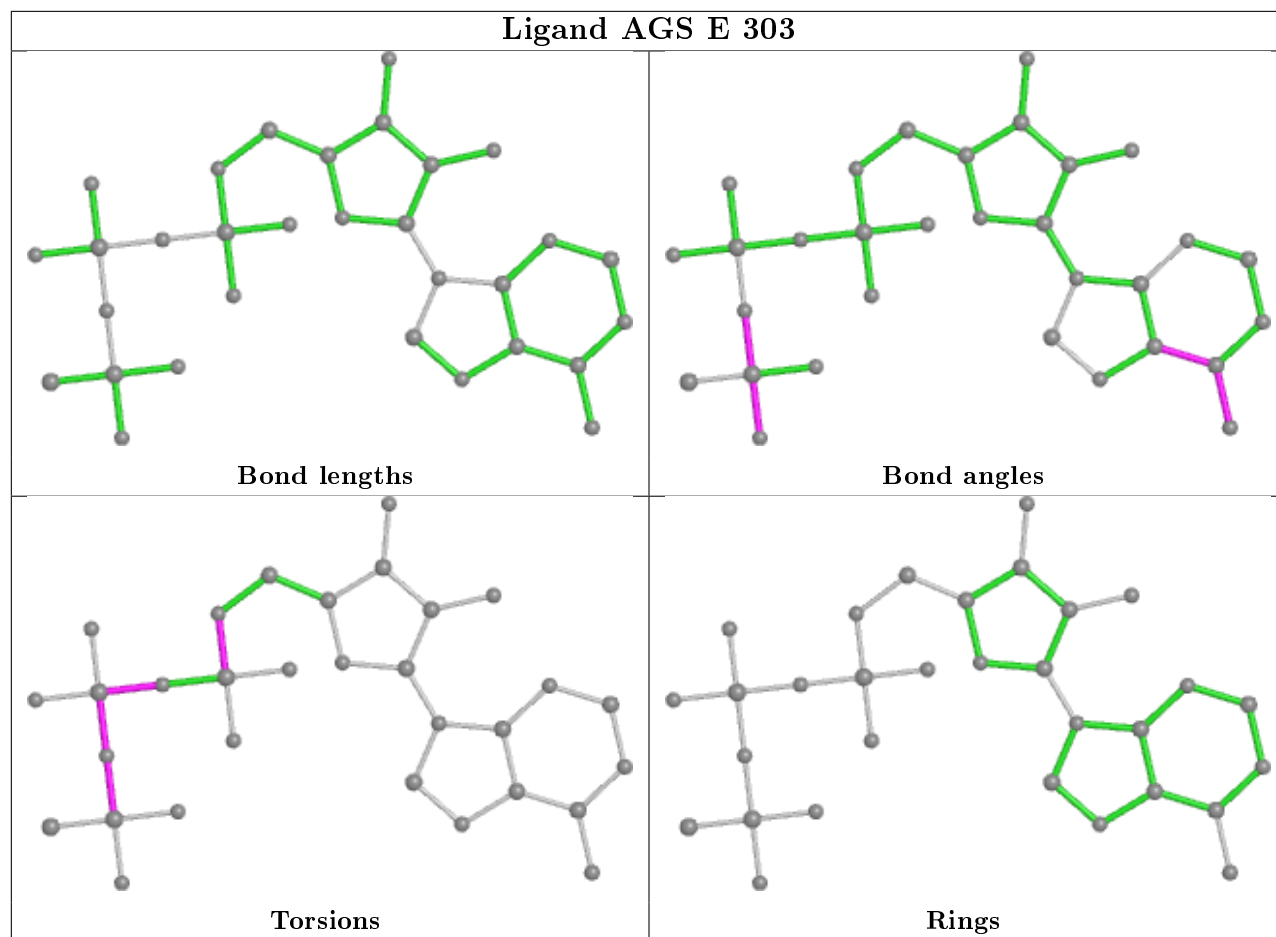
1 monomer is involved in 1 short contact:

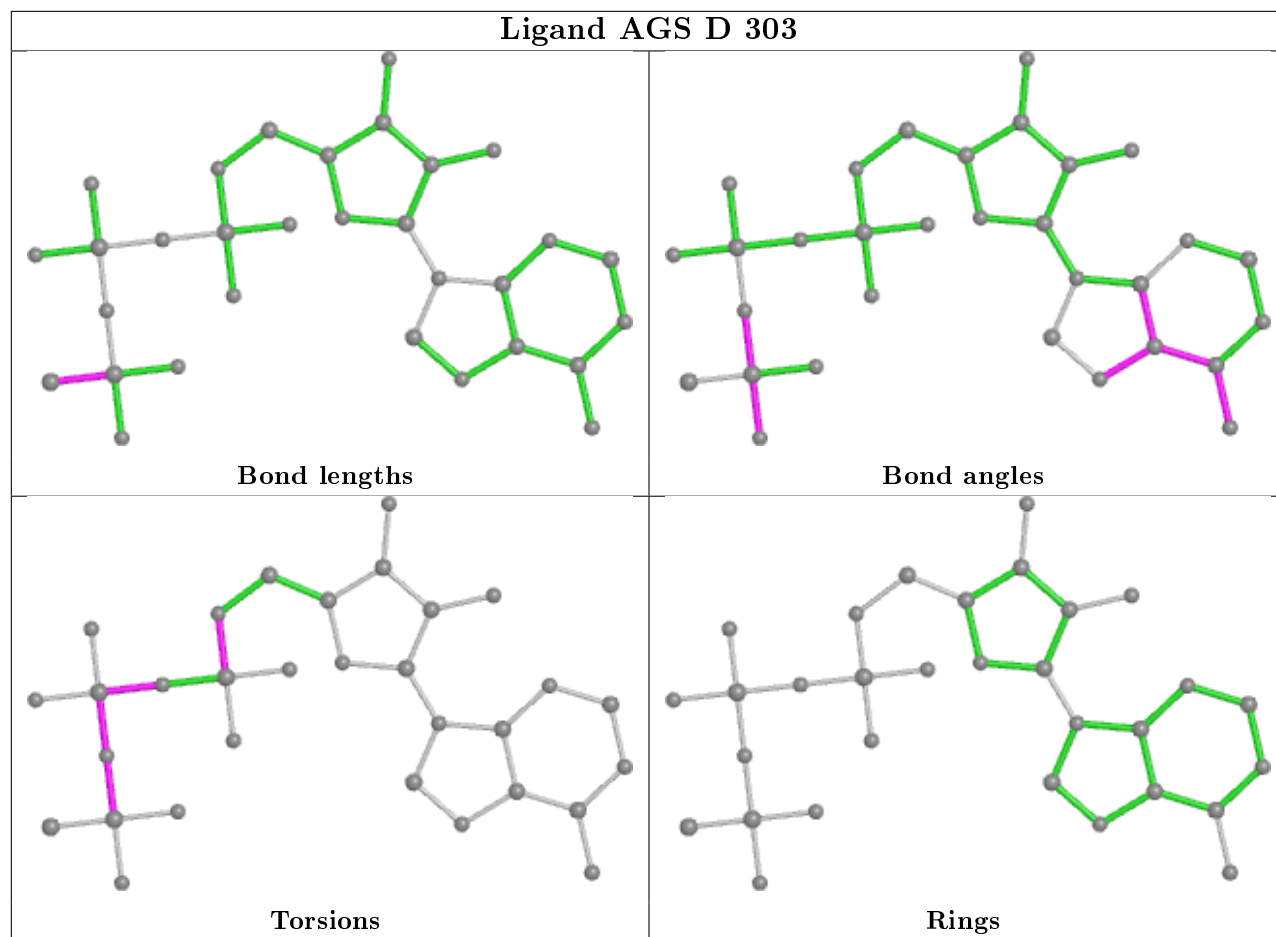
Mol	Chain	Res	Type	Clashes	Symm-Clashes
4	A	303	AGS	1	0

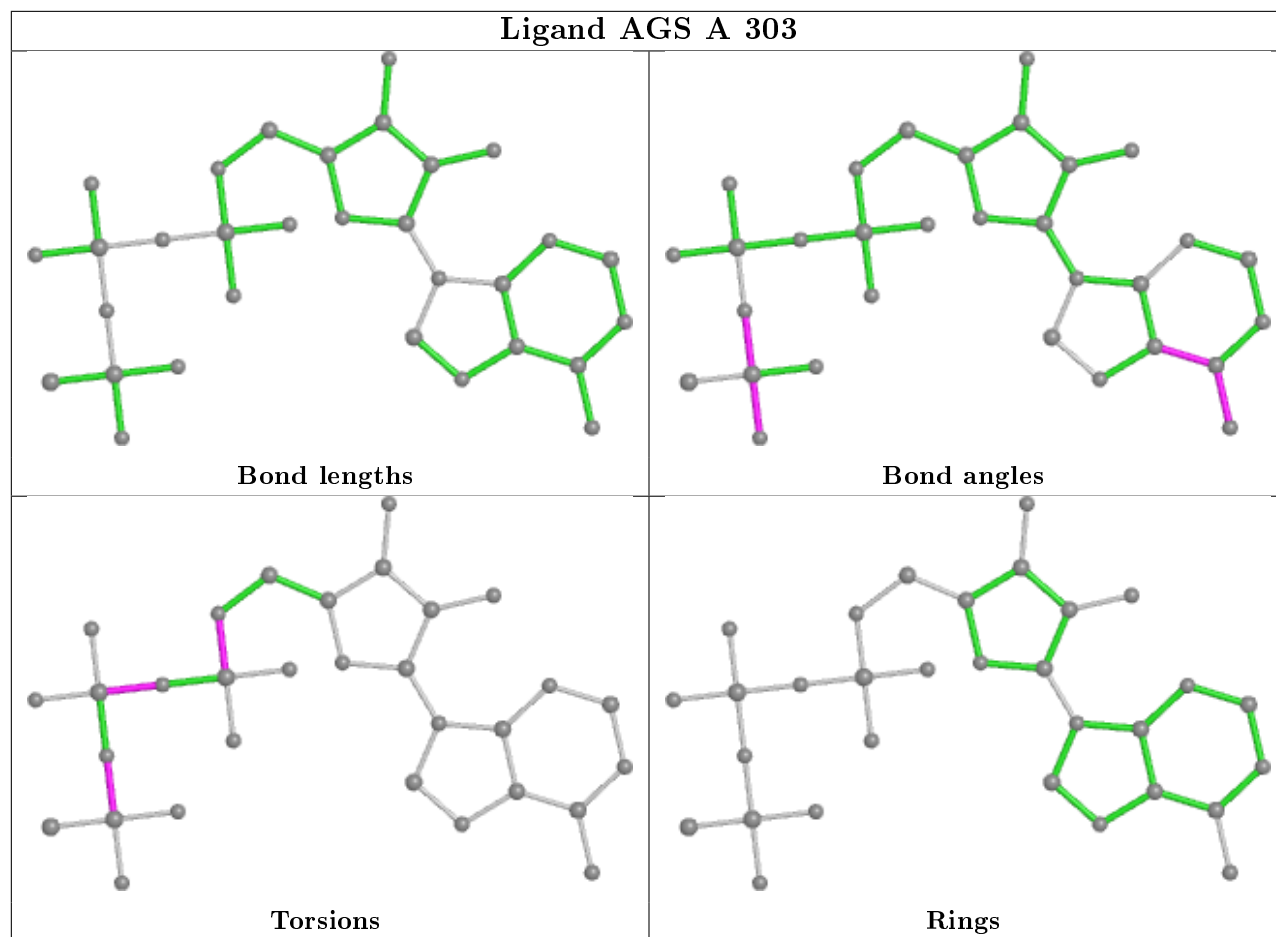
The following is a two-dimensional graphical depiction of Mogul quality analysis of bond lengths, bond angles, torsion angles, and ring geometry for all instances of the Ligand of Interest. In addition, ligands with molecular weight > 250 and outliers as shown on the validation Tables will also be included. For torsion angles, if less than 5% of the Mogul distribution of torsion angles is within 10 degrees of the torsion angle in question, then that torsion angle is considered an outlier. Any bond that is central to one or more torsion angles identified as an outlier by Mogul will be highlighted in the graph. For rings, the root-mean-square deviation (RMSD) between the ring in question and similar rings identified by Mogul is calculated over all ring torsion angles. If the average RMSD is greater than 60 degrees and the minimal RMSD between the ring in question and any Mogul-identified rings is also greater than 60 degrees, then that ring is considered an outlier. The outliers are highlighted in purple. The color gray indicates Mogul did not find sufficient equivalents in the CSD to analyse the geometry.

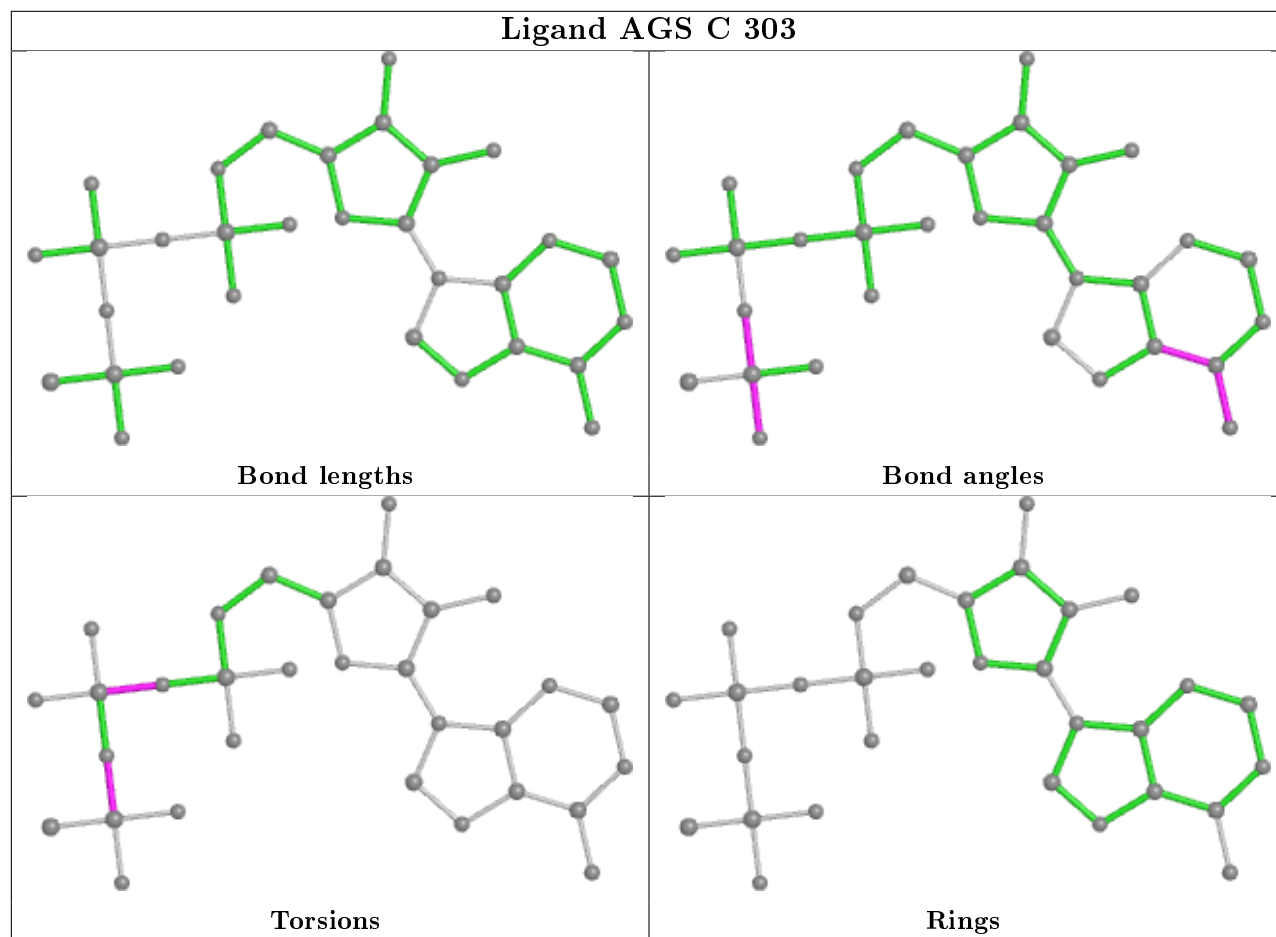












5.7 Other polymers [i](#)

There are no such residues in this entry.

5.8 Polymer linkage issues [i](#)

There are no chain breaks in this entry.

6 Fit of model and data ⓘ

6.1 Protein, DNA and RNA chains ⓘ

In the following table, the column labelled ‘#RSRZ> 2’ contains the number (and percentage) of RSRZ outliers, followed by percent RSRZ outliers for the chain as percentile scores relative to all X-ray entries and entries of similar resolution. The OWAB column contains the minimum, median, 95th percentile and maximum values of the occupancy-weighted average B-factor per residue. The column labelled ‘Q< 0.9’ lists the number of (and percentage) of residues with an average occupancy less than 0.9.

Mol	Chain	Analysed	<RSRZ>	#RSRZ>2	OWAB(Å ²)	Q<0.9
1	A	224/253 (88%)	0.51	24 (10%) 6 6	13, 31, 65, 99	0
1	B	222/253 (87%)	0.16	11 (4%) 28 31	12, 22, 51, 99	0
1	C	225/253 (88%)	0.15	17 (7%) 13 15	11, 22, 55, 99	0
1	D	228/253 (90%)	0.25	15 (6%) 18 20	10, 21, 54, 109	0
1	E	227/253 (89%)	0.28	23 (10%) 7 7	9, 22, 63, 118	0
1	F	220/253 (86%)	0.17	11 (5%) 28 31	9, 22, 54, 94	0
All	All	1346/1518 (88%)	0.25	101 (7%) 14 16	9, 23, 60, 118	0

All (101) RSRZ outliers are listed below:

Mol	Chain	Res	Type	RSRZ
1	D	250	GLY	16.4
1	E	15	HIS	9.5
1	E	154	TYR	8.5
1	F	110	PRO	8.1
1	E	151	PHE	7.9
1	A	249	LEU	7.6
1	D	12	ASN	6.4
1	D	249	LEU	6.2
1	B	121	PHE	5.7
1	F	121	PHE	5.7
1	A	132	TYR	5.4
1	C	247	PHE	5.4
1	D	121	PHE	5.4
1	A	121	PHE	5.3
1	B	15	HIS	5.2
1	A	15	HIS	5.1
1	C	249	LEU	5.0
1	A	111	ASP	5.0
1	C	152	GLN	4.9

Continued on next page...

Continued from previous page...

Mol	Chain	Res	Type	RSRZ
1	A	112	PRO	4.9
1	E	121	PHE	4.7
1	B	16	GLN	4.6
1	B	152	GLN	4.6
1	C	156	ALA	4.5
1	C	250	GLY	4.3
1	E	16	GLN	4.3
1	B	248	PRO	4.2
1	E	156	ALA	4.2
1	E	153	GLN	4.1
1	C	151	PHE	4.1
1	D	110	PRO	4.1
1	A	123	LEU	4.0
1	E	247	PHE	3.9
1	F	156	ALA	3.9
1	C	153	GLN	3.9
1	F	249	LEU	3.9
1	F	158	SER	3.8
1	D	112	PRO	3.6
1	C	121	PHE	3.6
1	E	152	GLN	3.6
1	A	159	VAL	3.6
1	A	248	PRO	3.6
1	E	112	PRO	3.6
1	B	159	VAL	3.5
1	D	123	LEU	3.4
1	F	155	ASP	3.3
1	D	122	ASP	3.3
1	D	156	ALA	3.3
1	B	110	PRO	3.2
1	E	111	ASP	3.2
1	D	155	ASP	3.1
1	B	249	LEU	3.1
1	F	248	PRO	3.1
1	E	132	TYR	3.1
1	A	110	PRO	3.0
1	A	152	GLN	2.9
1	F	159	VAL	2.9
1	E	159	VAL	2.9
1	A	156	ALA	2.9
1	E	124	SER	2.8
1	A	162	ARG	2.8

Continued on next page...

Continued from previous page...

Mol	Chain	Res	Type	RSRZ
1	B	17	ALA	2.8
1	D	56[A]	SER	2.8
1	F	247	PHE	2.8
1	E	110	PRO	2.7
1	A	138	ARG	2.7
1	D	111	ASP	2.7
1	A	174	ILE	2.7
1	E	123	LEU	2.7
1	C	122	ASP	2.6
1	E	17	ALA	2.6
1	A	157	SER	2.6
1	F	157	SER	2.6
1	E	248	PRO	2.6
1	E	158	SER	2.6
1	C	173	GLN	2.5
1	A	16	GLN	2.5
1	B	156	ALA	2.5
1	A	151	PHE	2.5
1	E	113	GLU	2.5
1	D	55	PHE	2.4
1	A	163	GLU	2.4
1	C	162	ARG	2.4
1	C	16	GLN	2.3
1	A	122	ASP	2.3
1	A	170	ARG	2.3
1	A	179	VAL	2.3
1	C	132[A]	TYR	2.3
1	A	124	SER	2.3
1	E	157	SER	2.3
1	E	194	TYR	2.2
1	D	162	ARG	2.2
1	E	138	ARG	2.2
1	A	247	PHE	2.1
1	C	99	ASP	2.1
1	C	150	VAL	2.1
1	B	179	VAL	2.1
1	C	179	VAL	2.1
1	D	132	TYR	2.0
1	F	17	ALA	2.0
1	C	15	HIS	2.0

6.2 Non-standard residues in protein, DNA, RNA chains [i](#)

There are no non-standard protein/DNA/RNA residues in this entry.

6.3 Carbohydrates [i](#)

There are no carbohydrates in this entry.

6.4 Ligands [i](#)

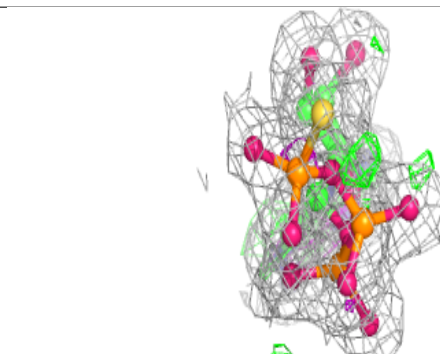
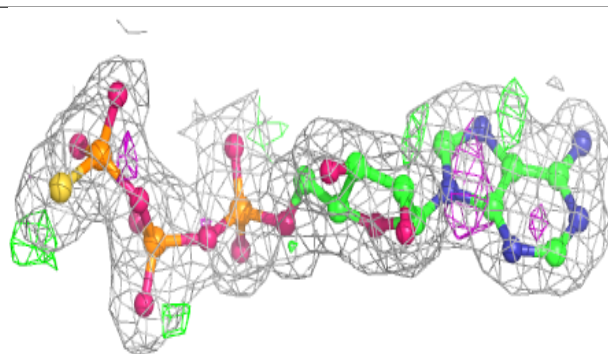
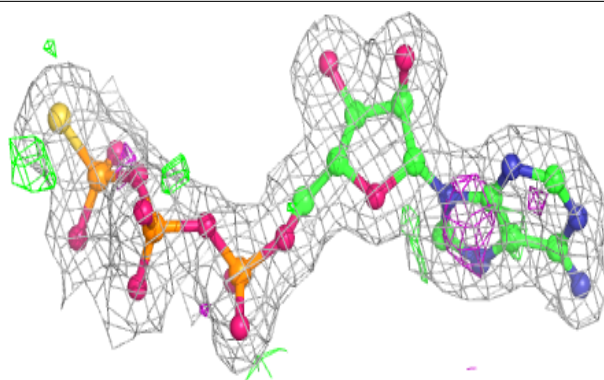
In the following table, the Atoms column lists the number of modelled atoms in the group and the number defined in the chemical component dictionary. The B-factors column lists the minimum, median, 95th percentile and maximum values of B factors of atoms in the group. The column labelled 'Q< 0.9' lists the number of atoms with occupancy less than 0.9.

Mol	Type	Chain	Res	Atoms	RSCC	RSR	B-factors(\AA^2)	Q<0.9
4	AGS	E	303	31/31	0.97	0.10	9,14,20,24	0
4	AGS	D	303	31/31	0.98	0.09	10,15,23,24	0
4	AGS	B	303	31/31	0.98	0.10	12,15,22,23	0
4	AGS	F	301	31/31	0.98	0.09	12,15,24,31	0
2	MG	D	301	1/1	0.98	0.11	19,19,19,19	0
4	AGS	A	303	31/31	0.98	0.09	15,20,28,28	0
2	MG	A	301	1/1	0.98	0.09	20,20,20,20	0
2	MG	E	301	1/1	0.98	0.04	16,16,16,16	0
2	MG	F	302	1/1	0.99	0.12	16,16,16,16	0
4	AGS	C	303	31/31	0.99	0.08	11,14,18,20	0
2	MG	B	301	1/1	0.99	0.12	14,14,14,14	0
3	CL	D	302	1/1	0.99	0.03	14,14,14,14	0
2	MG	C	301	1/1	0.99	0.04	16,16,16,16	0
3	CL	E	302	1/1	0.99	0.06	16,16,16,16	0
3	CL	C	302	1/1	1.00	0.03	16,16,16,16	0
3	CL	A	302	1/1	1.00	0.03	20,20,20,20	0
3	CL	B	302	1/1	1.00	0.06	20,20,20,20	0
3	CL	F	303	1/1	1.00	0.03	17,17,17,17	0

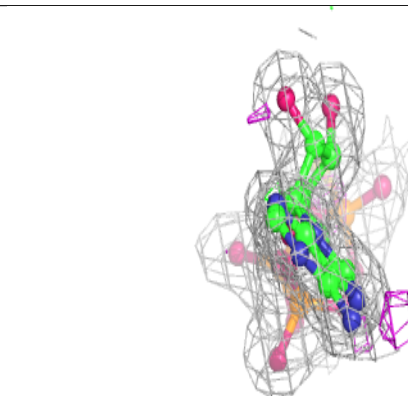
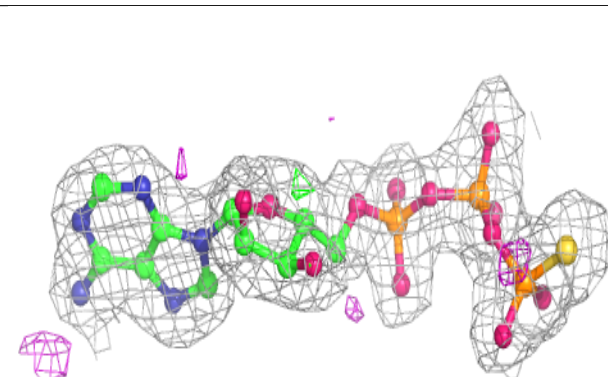
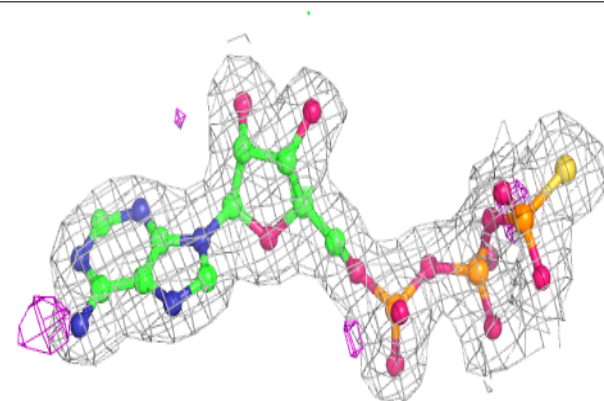
The following is a graphical depiction of the model fit to experimental electron density of all instances of the Ligand of Interest. In addition, ligands with molecular weight > 250 and outliers as shown on the geometry validation Tables will also be included. Each fit is shown from different orientation to approximate a three-dimensional view.

Electron density around AGS E 303:

$2mF_o-DF_c$ (at 0.7 rmsd) in gray
 mF_o-DF_c (at 3 rmsd) in purple (negative)
and green (positive)

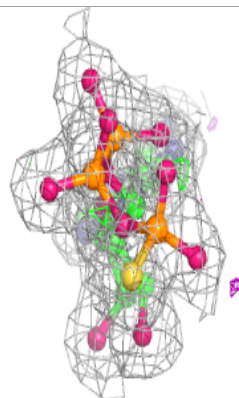
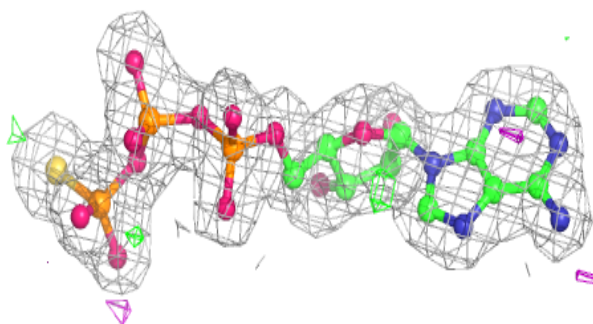
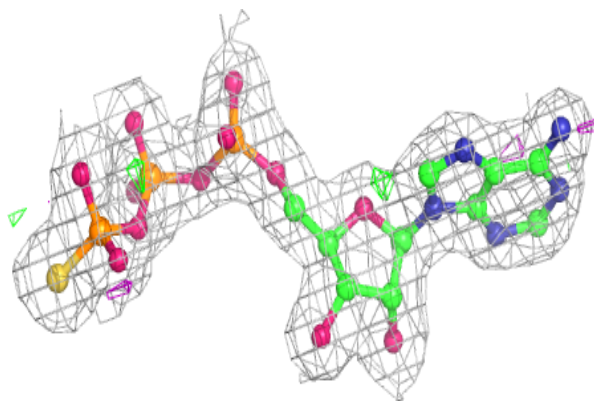
**Electron density around AGS D 303:**

$2mF_o-DF_c$ (at 0.7 rmsd) in gray
 mF_o-DF_c (at 3 rmsd) in purple (negative)
and green (positive)

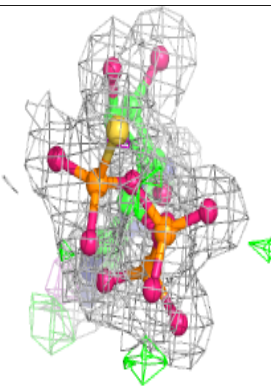
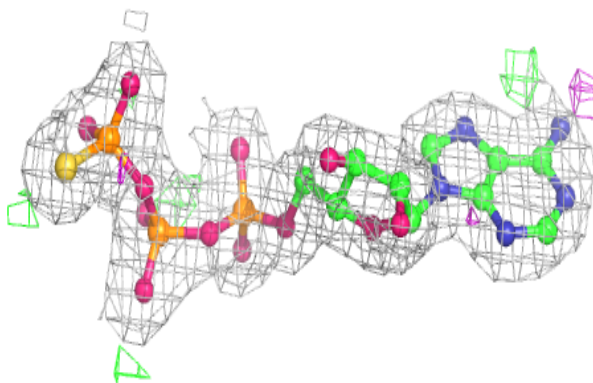
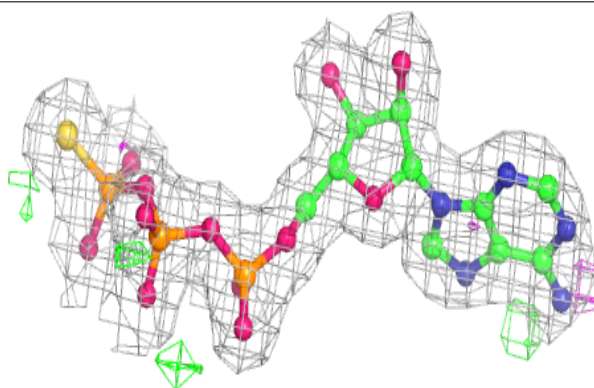


Electron density around AGS B 303:

$2mF_o-DF_c$ (at 0.7 rmsd) in gray
 mF_o-DF_c (at 3 rmsd) in purple (negative)
and green (positive)

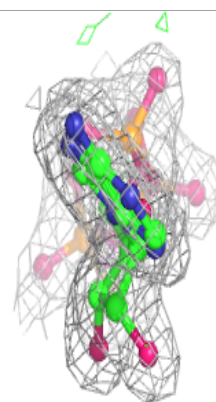
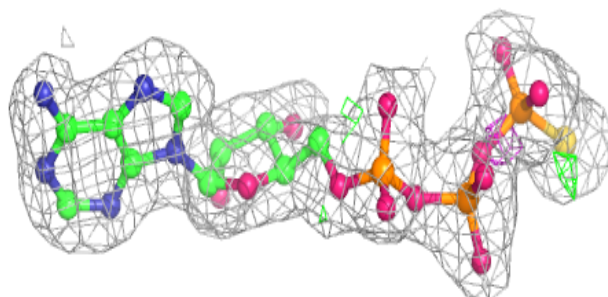
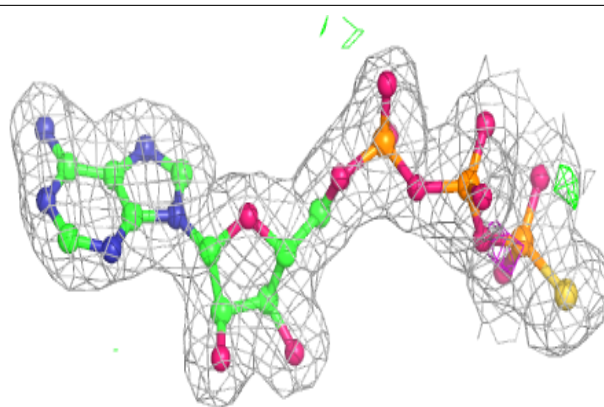
**Electron density around AGS F 301:**

$2mF_o-DF_c$ (at 0.7 rmsd) in gray
 mF_o-DF_c (at 3 rmsd) in purple (negative)
and green (positive)

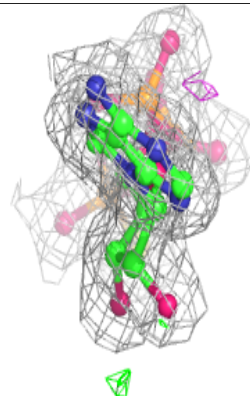
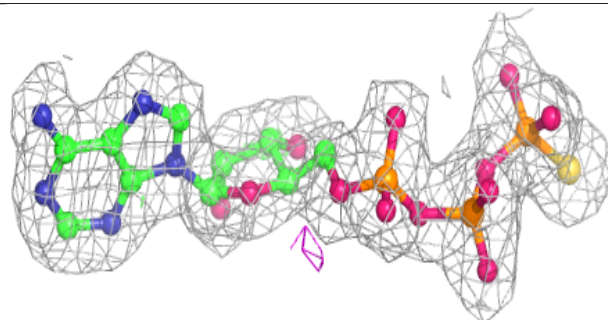
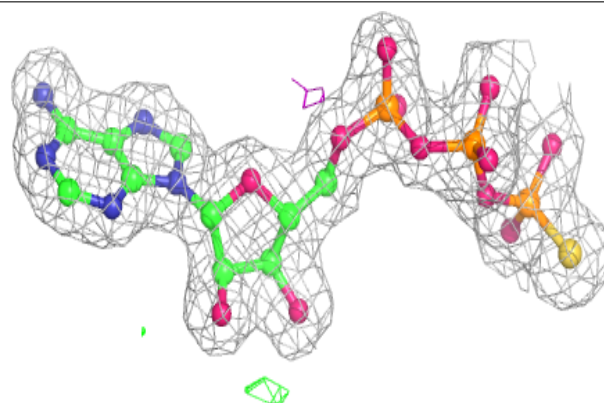


Electron density around AGS A 303:

$2mF_o-DF_c$ (at 0.7 rmsd) in gray
 mF_o-DF_c (at 3 rmsd) in purple (negative)
and green (positive)

**Electron density around AGS C 303:**

$2mF_o-DF_c$ (at 0.7 rmsd) in gray
 mF_o-DF_c (at 3 rmsd) in purple (negative)
and green (positive)



6.5 Other polymers

There are no such residues in this entry.