



Full wwPDB EM Validation Report ⓘ

Nov 22, 2022 – 04:49 AM EST

PDB ID : 7TMP
EMDB ID : EMD-25998
Title : V1 complex lacking subunit C from *Saccharomyces cerevisiae*, State 2
Authors : Vasanthakumar, T.; Keon, K.A.; Bueler, S.A.; Jaskolka, M.C.; Rubinstein, J.L.
Deposited on : 2022-01-19
Resolution : 3.30 Å(reported)

This is a Full wwPDB EM Validation Report for a publicly released PDB entry.

We welcome your comments at validation@mail.wwpdb.org

A user guide is available at

<https://www.wwpdb.org/validation/2017/EMValidationReportHelp>
with specific help available everywhere you see the ⓘ symbol.

The types of validation reports are described at

<http://www.wwpdb.org/validation/2017/FAQs#types>.

The following versions of software and data (see [references ⓘ](#)) were used in the production of this report:

EMDB validation analysis : 0.0.1.dev43
Mogul : 1.8.5 (274361), CSD as541be (2020)
MolProbity : 4.02b-467
buster-report : 1.1.7 (2018)
Percentile statistics : 20191225.v01 (using entries in the PDB archive December 25th 2019)
MapQ : 1.9.9
Ideal geometry (proteins) : Engh & Huber (2001)
Ideal geometry (DNA, RNA) : Parkinson et al. (1996)
Validation Pipeline (wwPDB-VP) : 2.31.3

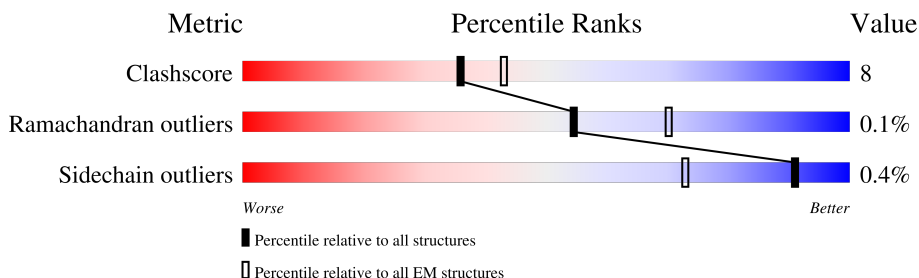
1 Overall quality at a glance

The following experimental techniques were used to determine the structure:

ELECTRON MICROSCOPY

The reported resolution of this entry is 3.30 Å.

Percentile scores (ranging between 0-100) for global validation metrics of the entry are shown in the following graphic. The table shows the number of entries on which the scores are based.





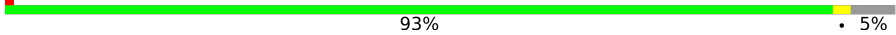




Metric	Whole archive (#Entries)	EM structures (#Entries)
Clashscore	158937	4297
Ramachandran outliers	154571	4023
Sidechain outliers	154315	3826

The table below summarises the geometric issues observed across the polymeric chains and their fit to the map. The red, orange, yellow and green segments of the bar indicate the fraction of residues that contain outliers for ≥ 3 , 2, 1 and 0 types of geometric quality criteria respectively. A grey segment represents the fraction of residues that are not modelled. The numeric value for each fraction is indicated below the corresponding segment, with a dot representing fractions $\leq 5\%$. The upper red bar (where present) indicates the fraction of residues that have poor fit to the EM map (all-atom inclusion $< 40\%$). The numeric value is given above the bar.

Mol	Chain	Length	Quality of chain
1	A	639	
1	C	639	
1	E	639	
2	B	517	
2	D	517	
2	F	517	
3	G	233	
3	I	233	

Continued on next page...

Continued from previous page...

Mol	Chain	Length	Quality of chain
3	K	233	 74%10%16%
4	H	114	 71%25%
4	J	114	 93%5%
4	L	114	 73%23%
5	M	256	 78%6%16%
6	N	118	 92%6%
7	P	478	 92%8%9%

2 Entry composition

There are 9 unique types of molecules in this entry. The entry contains 32105 atoms, of which 0 are hydrogens and 0 are deuteriums.

In the tables below, the AltConf column contains the number of residues with at least one atom in alternate conformation and the Trace column contains the number of residues modelled with at most 2 atoms.

- Molecule 1 is a protein called H(+)-transporting two-sector ATPase.

Mol	Chain	Residues	Atoms					AltConf	Trace
1	A	593	Total	C	N	O	S	0	0
			4228	2738	743	729	18		
1	C	592	Total	C	N	O	S	0	0
			4098	2659	715	709	15		
1	E	590	Total	C	N	O	S	0	0
			4169	2702	729	722	16		

There are 66 discrepancies between the modelled and reference sequences:

Chain	Residue	Modelled	Actual	Comment	Reference
A	617	ASP	-	expression tag	UNP A0A6L0YX77
A	618	TYR	-	expression tag	UNP A0A6L0YX77
A	619	LYS	-	expression tag	UNP A0A6L0YX77
A	620	ASP	-	expression tag	UNP A0A6L0YX77
A	621	HIS	-	expression tag	UNP A0A6L0YX77
A	622	ASP	-	expression tag	UNP A0A6L0YX77
A	623	GLY	-	expression tag	UNP A0A6L0YX77
A	624	ASP	-	expression tag	UNP A0A6L0YX77
A	625	TYR	-	expression tag	UNP A0A6L0YX77
A	626	LYS	-	expression tag	UNP A0A6L0YX77
A	627	ASP	-	expression tag	UNP A0A6L0YX77
A	628	HIS	-	expression tag	UNP A0A6L0YX77
A	629	ASP	-	expression tag	UNP A0A6L0YX77
A	630	ILE	-	expression tag	UNP A0A6L0YX77
A	631	ASP	-	expression tag	UNP A0A6L0YX77
A	632	TYR	-	expression tag	UNP A0A6L0YX77
A	633	LYS	-	expression tag	UNP A0A6L0YX77
A	634	ASP	-	expression tag	UNP A0A6L0YX77
A	635	ASP	-	expression tag	UNP A0A6L0YX77
A	636	ASP	-	expression tag	UNP A0A6L0YX77
A	637	ASP	-	expression tag	UNP A0A6L0YX77
A	638	LYS	-	expression tag	UNP A0A6L0YX77
C	617	ASP	-	expression tag	UNP A0A6L0YX77
C	618	TYR	-	expression tag	UNP A0A6L0YX77

Continued on next page...

Continued from previous page...

Chain	Residue	Modelled	Actual	Comment	Reference
C	619	LYS	-	expression tag	UNP A0A6L0YX77
C	620	ASP	-	expression tag	UNP A0A6L0YX77
C	621	HIS	-	expression tag	UNP A0A6L0YX77
C	622	ASP	-	expression tag	UNP A0A6L0YX77
C	623	GLY	-	expression tag	UNP A0A6L0YX77
C	624	ASP	-	expression tag	UNP A0A6L0YX77
C	625	TYR	-	expression tag	UNP A0A6L0YX77
C	626	LYS	-	expression tag	UNP A0A6L0YX77
C	627	ASP	-	expression tag	UNP A0A6L0YX77
C	628	HIS	-	expression tag	UNP A0A6L0YX77
C	629	ASP	-	expression tag	UNP A0A6L0YX77
C	630	ILE	-	expression tag	UNP A0A6L0YX77
C	631	ASP	-	expression tag	UNP A0A6L0YX77
C	632	TYR	-	expression tag	UNP A0A6L0YX77
C	633	LYS	-	expression tag	UNP A0A6L0YX77
C	634	ASP	-	expression tag	UNP A0A6L0YX77
C	635	ASP	-	expression tag	UNP A0A6L0YX77
C	636	ASP	-	expression tag	UNP A0A6L0YX77
C	637	ASP	-	expression tag	UNP A0A6L0YX77
C	638	LYS	-	expression tag	UNP A0A6L0YX77
E	617	ASP	-	expression tag	UNP A0A6L0YX77
E	618	TYR	-	expression tag	UNP A0A6L0YX77
E	619	LYS	-	expression tag	UNP A0A6L0YX77
E	620	ASP	-	expression tag	UNP A0A6L0YX77
E	621	HIS	-	expression tag	UNP A0A6L0YX77
E	622	ASP	-	expression tag	UNP A0A6L0YX77
E	623	GLY	-	expression tag	UNP A0A6L0YX77
E	624	ASP	-	expression tag	UNP A0A6L0YX77
E	625	TYR	-	expression tag	UNP A0A6L0YX77
E	626	LYS	-	expression tag	UNP A0A6L0YX77
E	627	ASP	-	expression tag	UNP A0A6L0YX77
E	628	HIS	-	expression tag	UNP A0A6L0YX77
E	629	ASP	-	expression tag	UNP A0A6L0YX77
E	630	ILE	-	expression tag	UNP A0A6L0YX77
E	631	ASP	-	expression tag	UNP A0A6L0YX77
E	632	TYR	-	expression tag	UNP A0A6L0YX77
E	633	LYS	-	expression tag	UNP A0A6L0YX77
E	634	ASP	-	expression tag	UNP A0A6L0YX77
E	635	ASP	-	expression tag	UNP A0A6L0YX77
E	636	ASP	-	expression tag	UNP A0A6L0YX77
E	637	ASP	-	expression tag	UNP A0A6L0YX77
E	638	LYS	-	expression tag	UNP A0A6L0YX77

- Molecule 2 is a protein called Vacuolar proton pump subunit B.

Mol	Chain	Residues	Atoms					AltConf	Trace
2	B	464	Total	C	N	O	S	0	0
			3380	2180	602	587	11		
2	D	459	Total	C	N	O	S	0	0
			3350	2166	592	580	12		
2	F	459	Total	C	N	O	S	0	0
			3366	2166	596	594	10		

- Molecule 3 is a protein called V-ATPase subunit E.

Mol	Chain	Residues	Atoms					AltConf	Trace
3	G	187	Total	C	N	O	S	0	0
			1237	794	228	213	2		
3	I	217	Total	C	N	O	S	0	0
			1366	872	248	244	2		
3	K	196	Total	C	N	O	S	0	0
			1265	817	233	213	2		

- Molecule 4 is a protein called V-type proton ATPase subunit G.

Mol	Chain	Residues	Atoms					AltConf	Trace
4	H	86	Total	C	N	O		0	0
			484	299	92	93			
4	J	108	Total	C	N	O		0	0
			588	364	113	111			
4	L	88	Total	C	N	O		0	0
			486	302	93	91			

- Molecule 5 is a protein called V-type proton ATPase subunit D.

Mol	Chain	Residues	Atoms					AltConf	Trace
5	M	214	Total	C	N	O	S	0	0
			1316	824	256	233	3		

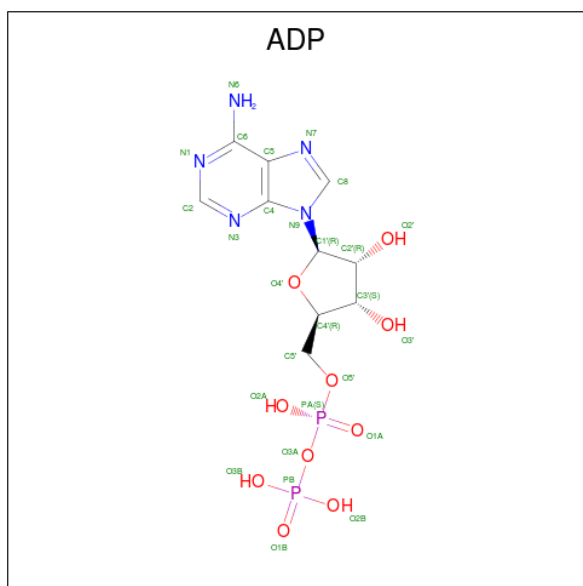
- Molecule 6 is a protein called V-type proton ATPase subunit F.

Mol	Chain	Residues	Atoms					AltConf	Trace
6	N	111	Total	C	N	O		0	0
			551	329	111	111			

- Molecule 7 is a protein called V-type proton ATPase subunit H.

Mol	Chain	Residues	Atoms				AltConf	Trace
7	P	441	Total	C	N	O	0	0
			2193	1311	441	441		

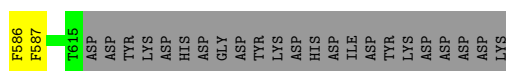
- Molecule 8 is ADENOSINE-5'-DIPHOSPHATE (three-letter code: ADP) (formula: $C_{10}H_{15}N_5O_{10}P_2$) (labeled as "Ligand of Interest" by depositor).



Mol	Chain	Residues	Atoms					AltConf
8	A	1	Total	C	N	O	P	0
			27	10	5	10	2	

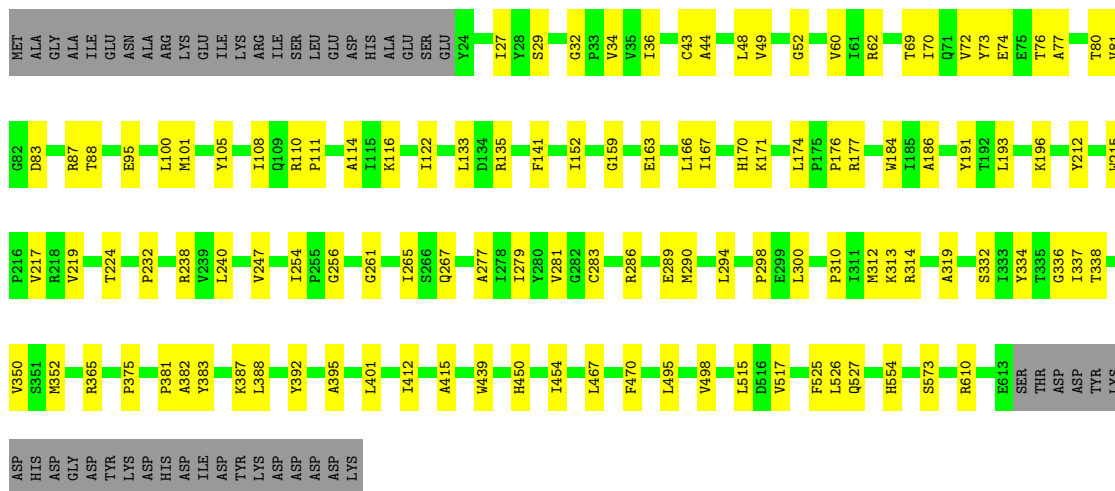
- Molecule 9 is MAGNESIUM ION (three-letter code: MG) (formula: Mg) (labeled as "Ligand of Interest" by depositor).

Mol	Chain	Residues	Atoms		AltConf
9	A	1	Total	Mg	0
			1	1	



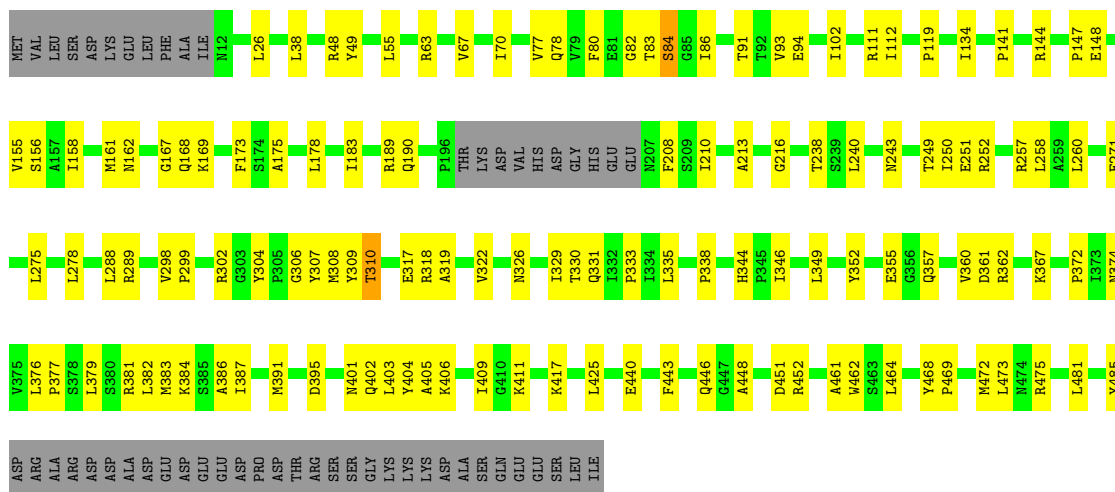
• Molecule 1: H(+)-transporting two-sector ATPase

Chain E: 74% 18% 8%



• Molecule 2: Vacuolar proton pump subunit B

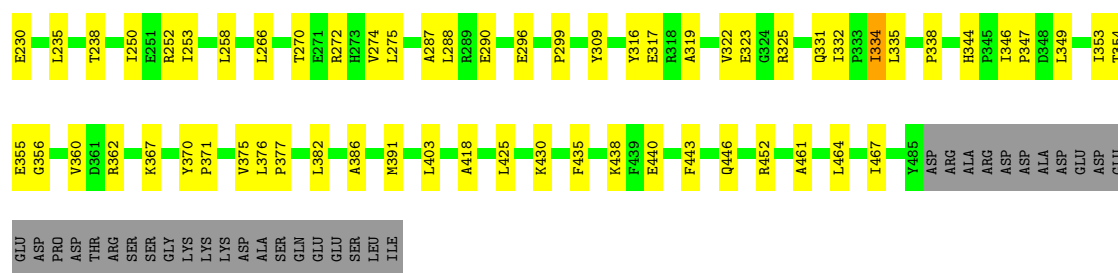
Chain B: 65% 25% 10%



• Molecule 2: Vacuolar proton pump subunit B

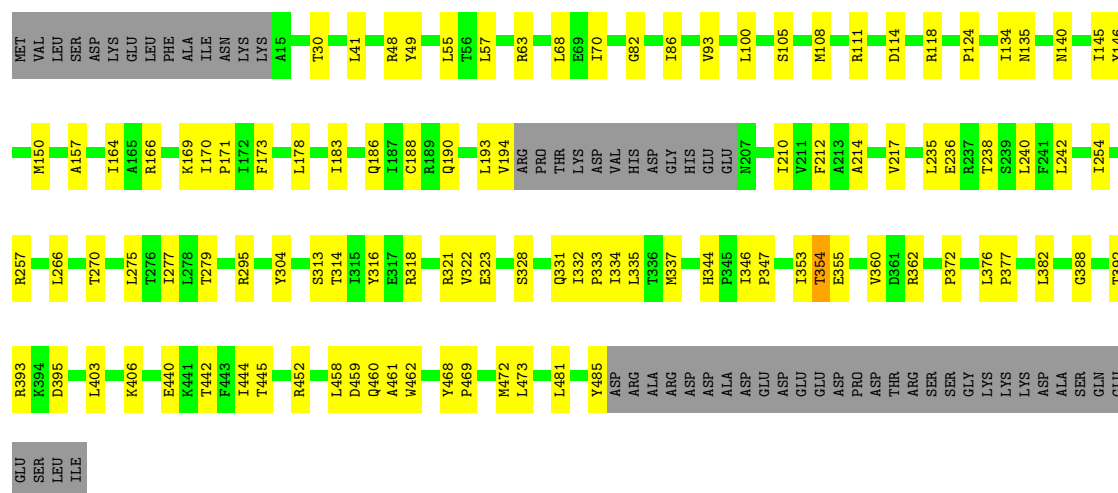
Chain D: 67% 21% 11%





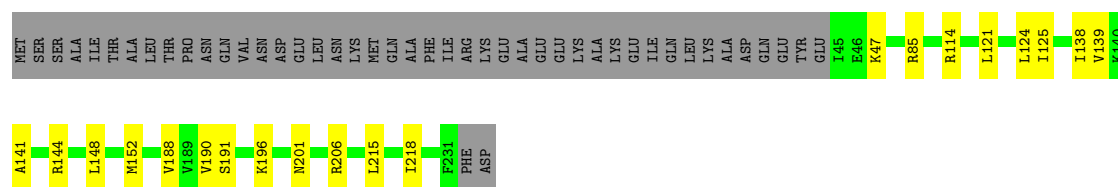
• Molecule 2: Vacuolar proton pump subunit B

Chain F: 68% 20% 11%



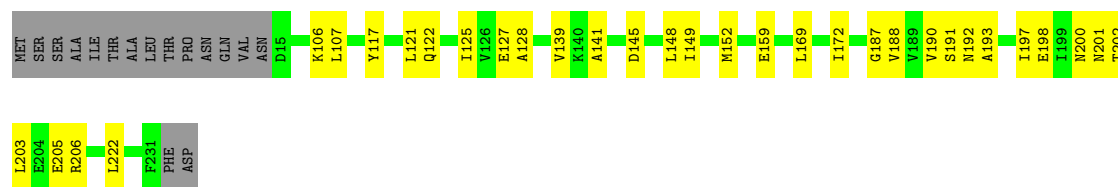
• Molecule 3: V-ATPase subunit E

Chain G: 72% 9% 20%



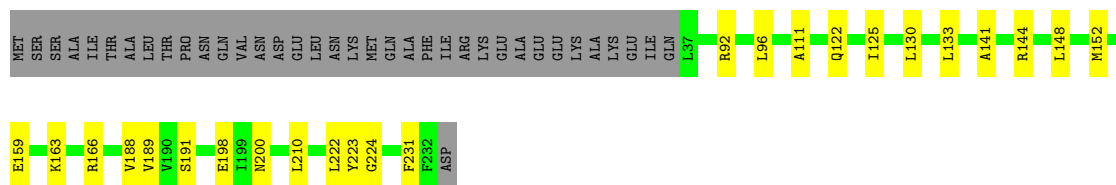
• Molecule 3: V-ATPase subunit E

Chain I: 79% 14% 7%



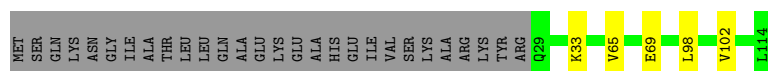
• Molecule 3: V-ATPase subunit E

Chain K:  74% 10% 16%




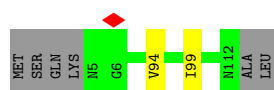
- Molecule 4: V-type proton ATPase subunit G

Chain H:  71% 0% 29%



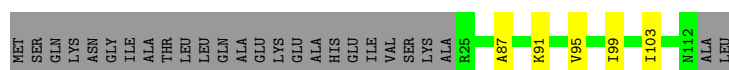
- Molecule 4: V-type proton ATPase subunit G

Chain J:  93% 0% 7%




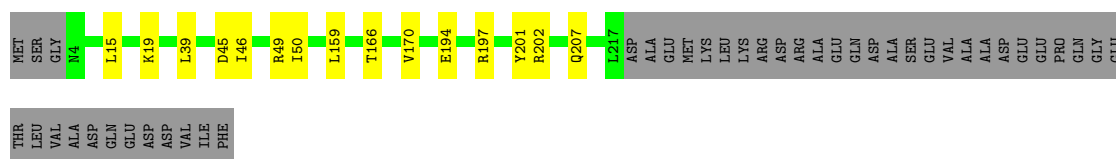
- Molecule 4: V-type proton ATPase subunit G

Chain L:  73% 0% 27%



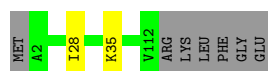
- Molecule 5: V-type proton ATPase subunit D

Chain M:  78% 6% 16%



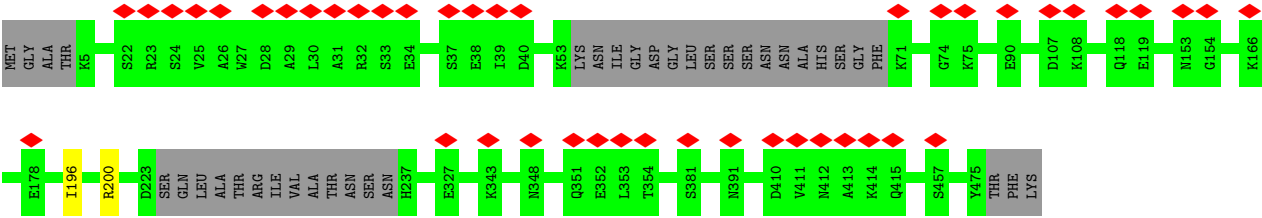
- Molecule 6: V-type proton ATPase subunit F

Chain N:  92% 0% 8%



- Molecule 7: V-type proton ATPase subunit H

Chain P:  9% 92% 8%



4 Experimental information

Property	Value	Source
EM reconstruction method	SINGLE PARTICLE	Depositor
Imposed symmetry	POINT, Not provided	
Number of particles used	127927	Depositor
Resolution determination method	FSC 0.143 CUT-OFF	Depositor
CTF correction method	PHASE FLIPPING AND AMPLITUDE CORRECTION	Depositor
Microscope	TFS KRIOS	Depositor
Voltage (kV)	300	Depositor
Electron dose ($e^-/\text{\AA}^2$)	41	Depositor
Minimum defocus (nm)	500	Depositor
Maximum defocus (nm)	2000	Depositor
Magnification	Not provided	
Image detector	FEI FALCON IV (4k x 4k)	Depositor
Maximum map value	7.835	Depositor
Minimum map value	-4.893	Depositor
Average map value	0.005	Depositor
Map value standard deviation	0.139	Depositor
Recommended contour level	0.2	Depositor
Map size (Å)	412.0, 412.0, 412.0	wwPDB
Map dimensions	400, 400, 400	wwPDB
Map angles (°)	90.0, 90.0, 90.0	wwPDB
Pixel spacing (Å)	1.03, 1.03, 1.03	Depositor

5 Model quality [i](#)

5.1 Standard geometry [i](#)

Bond lengths and bond angles in the following residue types are not validated in this section: ADP, MG

The Z score for a bond length (or angle) is the number of standard deviations the observed value is removed from the expected value. A bond length (or angle) with $|Z| > 5$ is considered an outlier worth inspection. RMSZ is the root-mean-square of all Z scores of the bond lengths (or angles).

Mol	Chain	Bond lengths		Bond angles	
		RMSZ	$\# Z > 5$	RMSZ	$\# Z > 5$
1	A	0.28	0/4326	0.49	0/5904
1	C	0.29	0/4192	0.47	0/5741
1	E	0.27	0/4266	0.48	0/5833
2	B	0.29	0/3449	0.52	0/4703
2	D	0.28	0/3418	0.51	0/4664
2	F	0.30	0/3434	0.52	0/4682
3	G	0.28	0/1247	0.45	0/1705
3	I	0.31	0/1376	0.44	0/1886
3	K	0.24	0/1276	0.43	0/1744
4	H	0.32	0/485	0.40	0/668
4	J	0.24	0/589	0.34	0/814
4	L	0.24	0/487	0.40	0/672
5	M	0.24	0/1327	0.45	0/1818
6	N	0.24	0/550	0.41	0/766
7	P	0.22	0/2190	0.33	0/3054
All	All	0.28	0/32612	0.47	0/44654

There are no bond length outliers.

There are no bond angle outliers.

There are no chirality outliers.

There are no planarity outliers.

5.2 Too-close contacts [i](#)

In the following table, the Non-H and H(model) columns list the number of non-hydrogen atoms and hydrogen atoms in the chain respectively. The H(added) column lists the number of hydrogen atoms added and optimized by MolProbity. The Clashes column lists the number of clashes within the asymmetric unit, whereas Symm-Clashes lists symmetry-related clashes.

Mol	Chain	Non-H	H(model)	H(added)	Clashes	Symm-Clashes
1	A	4228	0	3989	77	0
1	C	4098	0	3742	84	0
1	E	4169	0	3869	72	0
2	B	3380	0	3256	96	0
2	D	3350	0	3228	80	0
2	F	3366	0	3254	69	0
3	G	1237	0	1136	15	0
3	I	1366	0	1143	20	0
3	K	1265	0	1114	16	0
4	H	484	0	351	4	0
4	J	588	0	403	2	0
4	L	486	0	341	3	0
5	M	1316	0	1017	10	0
6	N	551	0	247	1	0
7	P	2193	0	939	1	0
8	A	27	0	12	1	0
9	A	1	0	0	0	0
All	All	32105	0	28041	510	0

The all-atom clashscore is defined as the number of clashes found per 1000 atoms (including hydrogen atoms). The all-atom clashscore for this structure is 8.

All (510) close contacts within the same asymmetric unit are listed below, sorted by their clash magnitude.

Atom-1	Atom-2	Interatomic distance (Å)	Clash overlap (Å)
2:D:266:LEU:O	2:D:270:THR:HB	1.76	0.85
1:C:94:VAL:HG23	1:C:217:VAL:HG22	1.60	0.84
1:A:517:VAL:HG11	1:A:554:HIS:HB2	1.64	0.78
2:B:175:ALA:H	2:B:178:LEU:HD12	1.48	0.78
1:A:375:PRO:HD2	5:M:202:ARG:HG3	1.68	0.76
2:F:313:SER:HA	2:F:353:ILE:HG21	1.68	0.76
2:B:403:LEU:HD11	2:B:461:ALA:HB1	1.70	0.73
1:A:238:ARG:NH1	1:A:538:CYS:SG	2.62	0.72
1:C:101:MET:HG2	1:C:167:ILE:HG21	1.71	0.72
2:B:417:LYS:HB2	2:B:425:LEU:HD11	1.71	0.72
3:I:125:ILE:HG12	3:I:188:VAL:HG21	1.71	0.72
1:E:100:LEU:HB3	1:E:133:LEU:HD21	1.72	0.72
2:D:150:MET:HB2	2:D:386:ALA:HB1	1.71	0.71
1:E:62:ARG:HB3	1:E:69:THR:HB	1.72	0.70
1:A:157:ILE:HD13	1:A:171:LYS:HD3	1.74	0.70
2:F:57:LEU:HD11	2:F:63:ARG:HE	1.56	0.70
2:B:469:PRO:HG2	2:B:472:MET:HG3	1.75	0.69

Continued on next page...

Continued from previous page...

Atom-1	Atom-2	Interatomic distance (Å)	Clash overlap (Å)
3:K:159:GLU:OE2	3:K:163:LYS:NZ	2.26	0.69
2:B:289:ARG:NH2	2:B:302:ARG:O	2.27	0.67
2:B:383:MET:O	2:B:387:ILE:HG22	1.95	0.67
2:D:296:GLU:O	5:M:207:GLN:NE2	2.28	0.67
3:I:202:THR:HG23	3:I:205:GLU:H	1.59	0.66
2:F:68:LEU:HD13	2:F:295:ARG:HD2	1.78	0.66
2:D:47:PRO:HB2	2:D:70:ILE:HD12	1.76	0.66
2:F:169:LYS:HB2	2:F:354:THR:HG22	1.78	0.66
2:F:235:LEU:HA	2:F:238:THR:HG22	1.78	0.66
2:B:169:LYS:NZ	2:B:355:GLU:OE2	2.23	0.65
1:C:583:SER:HA	1:C:586:PHE:HD2	1.62	0.65
1:A:513:ILE:HD11	1:A:561:VAL:HG21	1.79	0.64
1:A:80:THR:HG22	2:B:48:ARG:HG2	1.79	0.64
3:I:107:LEU:HD13	3:I:203:LEU:HB3	1.78	0.64
2:D:443:PHE:HB2	2:D:464:LEU:HD11	1.80	0.64
3:K:122:GLN:NE2	3:K:159:GLU:OE1	2.31	0.64
1:C:242:ALA:HA	1:C:478:PHE:HZ	1.62	0.63
2:F:236:GLU:HA	3:G:85:ARG:HH12	1.63	0.63
3:K:92:ARG:HH11	3:K:223:TYR:HE2	1.47	0.63
5:M:39:LEU:HD22	5:M:159:LEU:HD11	1.79	0.63
1:C:116:LYS:HD2	2:D:143:ALA:HB2	1.81	0.62
2:F:331:GLN:HG2	2:F:333:PRO:HD3	1.81	0.62
2:F:442:THR:HG22	2:F:460:GLN:HE21	1.64	0.62
1:A:170:HIS:CE1	1:A:346:GLN:HE22	2.18	0.62
3:K:141:ALA:HB2	3:K:188:VAL:HG12	1.80	0.62
2:B:360:VAL:HG13	2:B:372:PRO:HG2	1.82	0.62
1:A:286:ARG:NH2	2:B:352:TYR:O	2.32	0.62
1:C:27:ILE:HG13	1:C:83:ASP:HB2	1.82	0.62
1:C:61:ILE:HG13	1:C:71:GLN:HG3	1.80	0.62
2:F:321:ARG:HG2	2:F:328:SER:HB3	1.82	0.62
6:N:28:ILE:HA	6:N:35:LYS:HA	1.82	0.62
1:C:111:PRO:HB2	1:C:114:ALA:HB3	1.82	0.61
2:F:183:ILE:HD11	2:F:372:PRO:HD2	1.83	0.61
3:G:124:LEU:O	3:G:201:ASN:ND2	2.33	0.61
2:F:240:LEU:HD23	2:F:242:LEU:HD21	1.83	0.61
3:G:141:ALA:HB2	3:G:188:VAL:HG12	1.81	0.61
1:C:320:ASN:HD21	1:C:329:ARG:HA	1.66	0.61
3:I:139:VAL:HG22	3:I:190:VAL:HG22	1.83	0.61
2:F:188:CYS:SG	2:F:210:ILE:HG12	2.41	0.61
1:A:122:ILE:HD12	2:B:322:VAL:HG11	1.83	0.61
2:D:151:ILE:HD12	2:D:275:LEU:HD22	1.82	0.61

Continued on next page...

Continued from previous page...

Atom-1	Atom-2	Interatomic distance (Å)	Clash overlap (Å)
2:D:435:PHE:HB2	2:D:467:ILE:HD11	1.83	0.61
2:D:51:GLU:H	2:D:67:VAL:HG22	1.66	0.60
1:C:327:ALA:HA	1:C:367:ILE:HD11	1.83	0.60
2:B:468:TYR:O	2:B:485:TYR:OH	2.20	0.60
1:C:122:ILE:HD12	2:D:322:VAL:HG11	1.84	0.60
1:E:256:GLY:HA2	1:E:415:ALA:HB1	1.82	0.60
2:F:63:ARG:NH1	2:F:82:GLY:O	2.34	0.60
2:F:171:PRO:HB3	2:F:333:PRO:HG2	1.83	0.60
2:F:360:VAL:HG13	2:F:372:PRO:HG2	1.83	0.60
3:I:192:ASN:OD1	3:I:193:ALA:N	2.34	0.60
1:A:447:GLN:O	1:A:448:ARG:HG2	2.02	0.60
1:C:297:PHE:HD2	1:C:317:LEU:HD21	1.65	0.60
1:E:261:GLY:O	1:E:265:ILE:CB	2.50	0.60
1:A:438:PHE:HD2	1:A:459:SER:HA	1.67	0.59
1:C:323:ASN:OD1	2:D:317:GLU:HB2	2.00	0.59
1:C:27:ILE:HD11	1:C:51:VAL:HG13	1.84	0.59
1:C:49:VAL:HG12	1:C:87:ARG:HA	1.84	0.59
2:B:216:GLY:N	2:B:243:ASN:O	2.35	0.59
2:B:401:ASN:HB3	2:B:475:ARG:HG2	1.85	0.59
2:B:169:LYS:HE2	2:B:317:GLU:HA	1.83	0.59
1:E:27:ILE:HD12	1:E:83:ASP:HB2	1.85	0.59
1:C:96:LEU:HA	1:C:100:LEU:HD11	1.83	0.59
1:A:255:PRO:HG2	1:A:438:PHE:HE1	1.67	0.59
3:I:148:LEU:O	3:I:152:MET:HG2	2.03	0.59
1:E:232:PRO:HA	1:E:247:VAL:HA	1.83	0.59
2:D:316:TYR:O	2:D:331:GLN:NE2	2.36	0.58
1:A:217:VAL:HB	1:A:334:TYR:HB3	1.85	0.58
2:D:178:LEU:HD21	2:D:362:ARG:HG2	1.85	0.58
1:E:49:VAL:HG12	1:E:87:ARG:HA	1.85	0.58
1:A:509:ASP:O	1:A:513:ILE:HD12	2.04	0.58
1:E:29:SER:HB3	1:E:36:ILE:HB	1.85	0.58
1:A:183:THR:HG21	1:A:206:LYS:HE2	1.85	0.58
1:E:81:VAL:HG23	2:F:70:ILE:HD12	1.84	0.58
1:E:240:LEU:HD21	1:E:454:ILE:HG13	1.86	0.58
1:C:238:ARG:NH1	1:C:538:CYS:SG	2.76	0.58
1:C:293:VAL:HG23	1:C:294:LEU:HD12	1.84	0.58
1:E:52:GLY:HA2	1:E:83:ASP:HB3	1.86	0.57
1:A:450:HIS:O	1:A:450:HIS:ND1	2.37	0.57
1:C:517:VAL:HG11	1:C:554:HIS:HB2	1.86	0.57
2:D:367:LYS:NZ	2:D:440:GLU:OE2	2.30	0.57
4:H:65:VAL:O	4:H:69:GLU:N	2.35	0.57

Continued on next page...

Continued from previous page...

Atom-1	Atom-2	Interatomic distance (Å)	Clash overlap (Å)
1:A:252:THR:HB	1:A:413:VAL:HA	1.86	0.57
1:A:216:PRO:HB2	1:A:219:VAL:HG12	1.87	0.57
1:E:217:VAL:HG12	1:E:338:THR:HG21	1.86	0.56
1:A:277:ALA:HB3	1:A:350:VAL:HG22	1.88	0.56
2:B:161:MET:HG3	2:B:404:TYR:CZ	2.40	0.56
1:C:217:VAL:HG12	1:C:334:TYR:HB3	1.87	0.56
1:C:157:ILE:HD13	1:C:171:LYS:HD2	1.87	0.56
2:F:406:LYS:HD2	2:F:468:TYR:CZ	2.41	0.56
1:A:102:GLU:HG3	1:A:312:MET:HG3	1.86	0.56
1:E:277:ALA:HB3	1:E:350:VAL:HG22	1.87	0.55
2:B:63:ARG:NH1	2:B:82:GLY:O	2.39	0.55
2:B:156:SER:H	2:B:446:GLN:NE2	2.04	0.55
2:B:243:ASN:ND2	2:B:251:GLU:HG3	2.22	0.55
1:E:254:ILE:HG22	1:E:439:TRP:CE3	2.42	0.55
1:A:113:LYS:O	1:A:117:GLU:HG2	2.05	0.55
2:B:67:VAL:HG12	2:B:77:VAL:HG22	1.88	0.55
2:D:344:HIS:HB3	2:D:347:PRO:HD2	1.89	0.55
2:B:395:ASP:OD2	2:B:462:TRP:NE1	2.35	0.55
2:D:349:LEU:O	2:D:353:ILE:HD12	2.07	0.55
3:I:128:ALA:HB2	3:I:201:ASN:HD22	1.72	0.55
1:A:270:SER:HB2	1:A:278:ILE:HG21	1.89	0.55
2:D:403:LEU:HD11	2:D:461:ALA:HB1	1.89	0.55
2:B:299:PRO:HD3	5:M:201:TYR:CD2	2.42	0.55
1:C:520:LEU:HD21	1:C:581:VAL:HG11	1.87	0.55
4:L:87:ALA:O	4:L:91:LYS:HG3	2.06	0.55
2:B:178:LEU:HD21	2:B:362:ARG:HA	1.89	0.54
2:F:105:SER:H	2:F:108:MET:HE2	1.71	0.54
1:C:62:ARG:HG2	1:C:69:THR:HB	1.89	0.54
3:G:114:ARG:HH12	3:G:144:ARG:HD2	1.72	0.54
3:I:192:ASN:N	3:I:197:ILE:O	2.40	0.54
2:B:402:GLN:HE21	2:B:406:LYS:HG2	1.72	0.54
1:C:280:TYR:HB3	1:C:317:LEU:HD23	1.89	0.54
2:B:379:LEU:HD22	2:B:381:ARG:HH11	1.72	0.54
1:A:112:LEU:HD13	2:B:141:PRO:HD2	1.90	0.54
2:B:249:THR:HA	2:B:252:ARG:HD3	1.89	0.54
1:E:111:PRO:HB2	1:E:114:ALA:HB3	1.89	0.54
2:D:53:VAL:O	2:D:65:GLY:N	2.40	0.54
2:D:156:SER:OG	2:D:452:ARG:NE	2.37	0.54
2:B:155:VAL:HG13	2:B:158:ILE:HB	1.89	0.54
2:D:145:ILE:HD11	2:D:323:GLU:HA	1.90	0.54
3:G:47:LYS:HA	4:H:33:LYS:HA	1.90	0.54

Continued on next page...

Continued from previous page...

Atom-1	Atom-2	Interatomic distance (Å)	Clash overlap (Å)
2:B:178:LEU:HD13	2:B:360:VAL:HG12	1.90	0.54
2:B:189:ARG:NH1	2:B:448:ALA:O	2.41	0.54
2:D:164:ILE:HG12	2:D:170:ILE:HG21	1.90	0.54
3:I:145:ASP:O	3:I:149:ILE:HG12	2.07	0.54
1:E:95:GLU:OE1	1:E:135:ARG:NH2	2.41	0.53
1:E:573:SER:O	1:E:610:ARG:NH2	2.39	0.53
2:D:335:LEU:HD13	2:D:346:ILE:HG22	1.89	0.53
1:E:193:LEU:HD23	1:E:212:TYR:HB3	1.91	0.53
3:G:121:LEU:HD11	3:G:188:VAL:HG13	1.90	0.53
3:G:218:ILE:HD11	4:H:98:LEU:HD21	1.91	0.53
3:K:111:ALA:HB1	3:K:144:ARG:HH22	1.73	0.53
2:F:376:LEU:HB2	2:F:377:PRO:HD3	1.89	0.53
3:K:125:ILE:HG12	3:K:188:VAL:HG21	1.90	0.53
1:A:389:ALA:HA	1:A:434:ILE:HG12	1.91	0.53
1:C:52:GLY:HA2	1:C:83:ASP:HB3	1.91	0.53
2:F:214:ALA:HB3	2:F:242:LEU:HA	1.90	0.53
7:P:196:ILE:O	7:P:200:ARG:N	2.37	0.53
2:D:164:ILE:HG23	2:D:168:GLN:HE21	1.72	0.53
5:M:15:LEU:O	5:M:19:LYS:HG3	2.08	0.53
1:C:271:LYS:HD3	1:C:300:LEU:HD22	1.91	0.52
1:E:254:ILE:HG22	1:E:439:TRP:HE3	1.73	0.52
1:E:495:LEU:HB3	1:E:515:LEU:HD11	1.90	0.52
1:A:438:PHE:CD2	1:A:459:SER:HA	2.43	0.52
1:C:416:VAL:HG13	1:C:418:PRO:HD3	1.91	0.52
1:C:522:LYS:O	1:C:527:GLN:HG2	2.08	0.52
1:E:133:LEU:O	1:E:135:ARG:NE	2.37	0.52
1:A:326:VAL:HG22	2:B:310:THR:HG21	1.91	0.52
1:C:252:THR:HG22	1:C:437:VAL:HB	1.91	0.52
1:C:344:ARG:HD3	1:C:410:VAL:HG23	1.92	0.52
3:G:148:LEU:O	3:G:152:MET:HG2	2.10	0.52
1:A:496:GLU:HA	1:A:499:VAL:HG12	1.90	0.52
1:C:267:GLN:O	1:C:271:LYS:HG2	2.10	0.52
1:E:176:PRO:O	1:E:177:ARG:HG2	2.09	0.52
1:A:77:ALA:HA	2:B:49:TYR:HD2	1.75	0.52
2:B:144:ARG:NH1	2:B:319:ALA:O	2.42	0.52
2:B:147:PRO:HB3	2:B:167:GLY:H	1.74	0.52
2:B:367:LYS:NZ	2:B:440:GLU:OE1	2.41	0.52
1:E:72:VAL:HG12	1:E:74:GLU:H	1.75	0.52
2:F:445:THR:O	2:F:452:ARG:NH2	2.43	0.52
1:C:388:LEU:HD11	1:C:427:VAL:HG23	1.92	0.52
1:E:439:TRP:HB3	1:E:454:ILE:HD12	1.92	0.51

Continued on next page...

Continued from previous page...

Atom-1	Atom-2	Interatomic distance (Å)	Clash overlap (Å)
2:B:156:SER:H	2:B:446:GLN:HE22	1.57	0.51
3:I:122:GLN:NE2	3:I:159:GLU:OE1	2.43	0.51
1:A:260:CYS:HA	1:A:446:ALA:HB2	1.93	0.51
1:C:297:PHE:CD2	1:C:317:LEU:HD21	2.44	0.51
2:F:164:ILE:HG12	2:F:170:ILE:HD13	1.92	0.51
8:A:701:ADP:O1B	2:B:381:ARG:NH2	2.42	0.51
1:E:122:ILE:HD12	2:F:322:VAL:HG11	1.91	0.51
2:F:157:ALA:HB2	2:F:444:ILE:HG12	1.91	0.51
3:G:206:ARG:NH1	4:H:102:VAL:O	2.43	0.51
2:B:355:GLU:HA	2:B:381:ARG:HD3	1.92	0.51
2:D:149:GLU:O	2:D:166:ARG:N	2.40	0.51
1:C:320:ASN:ND2	1:C:329:ARG:HA	2.26	0.51
2:F:266:LEU:O	2:F:270:THR:OG1	2.28	0.51
2:B:173:PHE:CE1	2:B:335:LEU:HD22	2.46	0.51
2:D:150:MET:SD	2:D:163:SER:HB2	2.50	0.51
2:D:266:LEU:HB3	2:D:272:ARG:HD3	1.92	0.50
1:E:232:PRO:HB3	1:E:467:LEU:HD21	1.91	0.50
1:A:255:PRO:HG2	1:A:438:PHE:CE1	2.47	0.50
1:A:531:TYR:CE2	2:B:384:LYS:HD2	2.46	0.50
2:B:443:PHE:HB2	2:B:464:LEU:HD11	1.93	0.50
1:C:323:ASN:HB3	2:D:138:PRO:HB3	1.94	0.50
1:C:583:SER:O	1:C:586:PHE:N	2.45	0.50
2:B:112:ILE:HG12	2:B:240:LEU:HD12	1.93	0.50
1:C:77:ALA:O	1:C:126:ARG:NH1	2.44	0.50
2:D:102:ILE:HG21	2:D:258:LEU:HD22	1.93	0.50
2:F:335:LEU:HD11	2:F:346:ILE:HG22	1.92	0.50
2:F:403:LEU:HD11	2:F:461:ALA:HB1	1.92	0.50
5:M:46:ILE:O	5:M:50:ILE:HG12	2.10	0.50
1:A:61:ILE:HG21	1:A:371:LEU:HD11	1.93	0.50
2:D:425:LEU:O	2:D:430:LYS:NZ	2.45	0.50
2:F:186:GLN:O	2:F:190:GLN:HG2	2.12	0.50
2:B:357:GLN:NE2	2:B:377:PRO:O	2.45	0.50
2:B:406:LYS:HD2	2:B:468:TYR:CZ	2.47	0.50
1:E:525:PHE:HD2	1:E:526:LEU:HD12	1.77	0.50
2:F:178:LEU:HD13	2:F:360:VAL:HG12	1.94	0.50
1:A:376:ALA:O	5:M:202:ARG:NH2	2.44	0.50
1:A:111:PRO:HG2	1:A:114:ALA:HB3	1.94	0.50
1:E:224:THR:HG23	1:E:401:LEU:HA	1.94	0.50
1:A:40:MET:CG	1:A:87:ARG:HD3	2.42	0.49
1:A:100:LEU:O	1:A:101:MET:C	2.50	0.49
2:B:111:ARG:HH12	2:B:119:PRO:HB3	1.77	0.49

Continued on next page...

Continued from previous page...

Atom-1	Atom-2	Interatomic distance (Å)	Clash overlap (Å)
2:D:178:LEU:HD13	2:D:360:VAL:HG12	1.94	0.49
2:D:332:ILE:HG22	2:D:334:ILE:HG13	1.95	0.49
2:D:376:LEU:HB2	2:D:377:PRO:HD3	1.94	0.49
2:D:151:ILE:O	2:D:151:ILE:HG13	2.12	0.49
1:E:105:TYR:O	1:E:319:ALA:N	2.43	0.49
2:F:468:TYR:O	2:F:485:TYR:OH	2.21	0.49
1:E:298:PRO:HD3	1:E:312:MET:HE2	1.94	0.49
2:F:275:LEU:HD21	2:F:332:ILE:HD12	1.94	0.49
1:E:166:LEU:HD13	1:E:314:ARG:HD3	1.95	0.49
2:F:134:ILE:HG13	2:F:135:ASN:N	2.27	0.49
3:I:222:LEU:HG	4:J:94:VAL:HG21	1.93	0.49
1:C:104:ILE:HG12	1:C:317:LEU:HD12	1.95	0.49
2:D:220:GLU:HA	2:D:223:ARG:HH12	1.78	0.49
2:F:194:VAL:HG21	2:F:392:THR:HG22	1.94	0.49
2:F:346:ILE:HB	2:F:347:PRO:HD3	1.95	0.49
1:E:450:HIS:CD2	1:E:527:GLN:HB2	2.48	0.49
2:F:57:LEU:HD11	2:F:63:ARG:NE	2.27	0.49
1:A:29:SER:HA	2:B:70:ILE:O	2.12	0.49
1:A:155:GLY:O	1:A:406:ARG:NH2	2.44	0.49
2:B:83:THR:HA	2:B:86:ILE:HD12	1.95	0.49
1:C:177:ARG:HH22	1:C:216:PRO:HG2	1.77	0.49
1:A:226:LYS:HG2	1:A:398:ALA:HB2	1.95	0.48
1:C:232:PRO:HA	1:C:247:VAL:HA	1.95	0.48
1:E:238:ARG:NH1	1:E:525:PHE:O	2.41	0.48
1:A:324:MET:HB3	1:A:325:PRO:HD2	1.94	0.48
2:B:243:ASN:HD21	2:B:251:GLU:HG3	1.78	0.48
2:D:175:ALA:HB3	2:D:178:LEU:HG	1.94	0.48
2:D:210:ILE:HA	2:D:274:VAL:O	2.13	0.48
1:E:365:ARG:HA	1:E:381:PRO:HD3	1.94	0.48
3:I:141:ALA:HB2	3:I:188:VAL:HG12	1.95	0.48
1:A:193:LEU:HD23	1:A:212:TYR:HB3	1.96	0.48
1:A:255:PRO:HA	1:A:416:VAL:O	2.14	0.48
2:B:162:ASN:OD1	2:B:404:TYR:OH	2.31	0.48
3:I:191:SER:HA	3:I:198:GLU:HA	1.95	0.48
2:D:55:LEU:HG	2:D:93:VAL:HG22	1.94	0.48
2:D:155:VAL:HG13	2:D:371:PRO:HG3	1.95	0.48
3:I:117:TYR:OH	3:I:187:GLY:N	2.42	0.48
2:B:443:PHE:O	2:B:452:ARG:NH2	2.46	0.48
2:B:405:ALA:O	2:B:409:ILE:HG12	2.14	0.48
1:C:182:ILE:HG12	1:C:198:LEU:HD11	1.96	0.48
1:E:290:MET:O	1:E:294:LEU:HG	2.14	0.48

Continued on next page...

Continued from previous page...

Atom-1	Atom-2	Interatomic distance (Å)	Clash overlap (Å)
1:C:418:PRO:HG3	1:C:423:PHE:CE1	2.49	0.47
2:D:346:ILE:HB	2:D:347:PRO:HD3	1.94	0.47
1:C:80:THR:HB	2:D:48:ARG:HG2	1.95	0.47
1:C:98:PRO:HD2	1:C:193:LEU:HD12	1.96	0.47
1:E:80:THR:HB	2:F:48:ARG:HG2	1.95	0.47
1:C:234:LEU:HD22	1:C:540:ILE:HB	1.96	0.47
1:C:326:VAL:HG22	1:C:367:ILE:HG13	1.96	0.47
1:C:286:ARG:NH1	2:D:354:THR:O	2.47	0.47
2:F:236:GLU:HA	3:G:85:ARG:NH1	2.28	0.47
1:C:166:LEU:HD13	1:C:313:LYS:HB2	1.95	0.47
1:A:487:GLU:O	1:A:491:ASN:ND2	2.47	0.47
2:B:148:GLU:HA	2:B:386:ALA:HB2	1.96	0.47
1:E:48:LEU:O	1:E:88:THR:OG1	2.24	0.47
2:B:331:GLN:C	2:B:333:PRO:HD3	2.35	0.47
2:D:41:LEU:HD11	2:D:93:VAL:HG11	1.95	0.47
1:E:334:TYR:O	1:E:338:THR:HG22	2.14	0.47
2:F:100:LEU:HD23	2:F:254:ILE:HD11	1.96	0.47
3:I:121:LEU:HD11	3:I:188:VAL:HG13	1.97	0.47
2:B:83:THR:O	2:B:84:SER:C	2.53	0.47
1:A:111:PRO:HD3	1:A:132:ALA:HA	1.96	0.47
1:A:335:THR:O	1:A:339:LEU:HG	2.16	0.47
1:A:57:VAL:HG12	1:A:73:TYR:HD2	1.79	0.46
1:A:549:ALA:HA	1:A:604:LEU:HD21	1.97	0.46
1:C:43:CYS:SG	1:C:60:VAL:HG21	2.55	0.46
2:F:111:ARG:NH2	2:F:124:PRO:O	2.49	0.46
3:G:139:VAL:HG12	3:G:190:VAL:HG22	1.96	0.46
1:A:395:ALA:HB2	1:A:412:ILE:HG13	1.97	0.46
2:D:55:LEU:HD11	2:D:77:VAL:HG11	1.97	0.46
3:I:127:GLU:OE2	3:I:206:ARG:NH1	2.48	0.46
2:B:446:GLN:HE21	2:B:452:ARG:NH2	2.14	0.46
5:M:166:THR:O	5:M:170:VAL:HG23	2.15	0.46
2:B:161:MET:HG3	2:B:404:TYR:CE2	2.51	0.46
2:D:164:ILE:HA	2:D:168:GLN:NE2	2.30	0.46
2:F:169:LYS:HG3	2:F:355:GLU:H	1.80	0.46
2:B:86:ILE:HG23	2:B:91:THR:HG21	1.98	0.46
2:D:270:THR:HG21	2:D:272:ARG:HH11	1.80	0.46
1:E:184:TRP:HZ3	1:E:196:LYS:HE3	1.80	0.46
2:F:440:GLU:O	2:F:445:THR:OG1	2.27	0.46
3:K:148:LEU:O	3:K:152:MET:HG2	2.15	0.46
1:A:47:GLU:OE2	1:A:89:GLY:HA2	2.16	0.46
1:C:333:ILE:HG12	1:C:360:TRP:CD1	2.51	0.46

Continued on next page...

Continued from previous page...

Atom-1	Atom-2	Interatomic distance (Å)	Clash overlap (Å)
1:E:116:LYS:HB2	2:F:140:ASN:HD22	1.78	0.46
1:E:388:LEU:HD22	1:E:392:TYR:HE2	1.80	0.46
1:A:101:MET:SD	1:A:167:ILE:HG13	2.55	0.46
2:F:388:GLY:HA2	2:F:393:ARG:O	2.15	0.46
2:D:250:ILE:HD12	2:D:250:ILE:H	1.81	0.46
2:D:290:GLU:HA	1:E:382:ALA:HB1	1.97	0.46
1:E:60:VAL:HG22	1:E:70:ILE:HG12	1.97	0.46
1:E:101:MET:HG2	1:E:167:ILE:HG13	1.96	0.46
3:K:222:LEU:O	3:K:224:GLY:N	2.49	0.46
1:A:286:ARG:HG3	1:A:289:GLU:HG3	1.98	0.45
2:B:376:LEU:HB2	2:B:377:PRO:HD3	1.97	0.45
2:D:438:LYS:HB3	2:D:464:LEU:HD22	1.97	0.45
3:I:200:ASN:OD1	3:I:202:THR:HG22	2.16	0.45
2:B:391:MET:SD	2:B:391:MET:N	2.90	0.45
2:F:145:ILE:HD11	2:F:323:GLU:HA	1.97	0.45
3:I:125:ILE:HD11	3:I:149:ILE:HD12	1.98	0.45
1:A:288:ASN:HD22	2:B:355:GLU:CD	2.20	0.45
2:D:161:MET:HG3	2:D:375:VAL:HG11	1.97	0.45
3:G:125:ILE:HG12	3:G:188:VAL:HG21	1.98	0.45
5:M:45:ASP:O	5:M:49:ARG:HG3	2.17	0.45
2:B:102:ILE:HB	2:B:258:LEU:HD23	1.98	0.45
1:E:101:MET:HE2	1:E:314:ARG:HA	1.96	0.45
2:F:134:ILE:O	2:F:318:ARG:NH1	2.43	0.45
1:A:245:PRO:O	1:A:461:SER:OG	2.28	0.45
1:C:281:VAL:HG11	1:C:336:GLY:HA3	1.99	0.45
2:D:226:LYS:O	2:D:230:GLU:HG3	2.16	0.45
2:F:279:THR:HB	2:F:334:ILE:HD12	1.99	0.45
2:F:473:LEU:HD12	2:F:481:LEU:HD11	1.99	0.45
2:B:55:LEU:HG	2:B:93:VAL:HG22	1.98	0.45
1:C:584:SER:HA	1:C:587:PHE:CD2	2.52	0.45
2:D:171:PRO:HD2	2:D:356:GLY:O	2.16	0.45
2:F:146:TYR:CE1	2:F:382:LEU:HD22	2.52	0.45
2:B:298:VAL:HG23	2:B:306:GLY:H	1.81	0.45
2:B:304:TYR:CZ	2:B:346:ILE:HD11	2.52	0.45
1:C:166:LEU:HD23	1:C:314:ARG:HD3	1.99	0.45
1:C:337:ILE:HB	1:C:391:PHE:HE1	1.82	0.45
2:D:102:ILE:CG2	2:D:258:LEU:HD22	2.47	0.45
2:D:210:ILE:O	2:D:238:THR:HA	2.17	0.45
1:A:133:LEU:O	1:A:135:ARG:NH1	2.50	0.45
1:C:390:SER:O	1:C:394:ARG:HG3	2.17	0.45
2:D:104:VAL:HG21	2:D:132:LEU:HD13	1.99	0.45

Continued on next page...

Continued from previous page...

Atom-1	Atom-2	Interatomic distance (Å)	Clash overlap (Å)
1:E:73:TYR:CG	1:E:108:ILE:HD11	2.52	0.45
2:B:112:ILE:HG23	2:B:240:LEU:HB2	1.98	0.44
1:C:30:VAL:HG13	1:C:35:VAL:HG22	1.99	0.44
1:C:288:ASN:HD22	2:D:355:GLU:CD	2.18	0.44
1:E:171:LYS:HE2	1:E:171:LYS:HB2	1.65	0.44
1:A:390:SER:O	1:A:394:ARG:HG2	2.18	0.44
2:B:189:ARG:HG3	2:B:190:GLN:HG3	2.00	0.44
2:D:127:PHE:HE1	3:K:96:LEU:HD22	1.82	0.44
1:E:334:TYR:HA	1:E:337:ILE:HG22	1.99	0.44
2:F:212:PHE:HD1	2:F:277:ILE:HB	1.83	0.44
1:A:266:SER:HB3	1:A:353:ILE:HG21	1.99	0.44
1:C:95:GLU:HG2	1:C:132:ALA:HB3	1.98	0.44
1:E:279:ILE:O	1:E:352:MET:HG2	2.18	0.44
1:A:260:CYS:HA	1:A:446:ALA:CB	2.48	0.44
1:C:193:LEU:HD11	1:C:212:TYR:HB3	2.00	0.44
1:E:152:ILE:HG12	1:E:174:LEU:HD22	1.99	0.44
1:A:81:VAL:HG23	2:B:70:ILE:HD12	1.99	0.44
1:A:358:SER:HA	1:A:427:VAL:HG21	1.99	0.44
1:E:467:LEU:HD12	1:E:470:PHE:HB3	1.99	0.44
2:D:309:TYR:CD1	2:D:353:ILE:HD11	2.53	0.44
1:E:383:TYR:O	1:E:387:LYS:HG2	2.17	0.44
1:E:517:VAL:HG11	1:E:554:HIS:HB2	2.00	0.44
2:F:41:LEU:HD21	2:F:93:VAL:HB	2.00	0.44
2:B:288:LEU:HD11	2:B:307:TYR:HE1	1.82	0.44
2:D:186:GLN:O	2:D:190:GLN:HG3	2.17	0.44
2:D:418:ALA:HB3	1:E:498:VAL:HG11	2.00	0.44
2:B:183:ILE:HD11	2:B:372:PRO:HD2	1.99	0.44
2:F:344:HIS:HB3	2:F:347:PRO:HD2	2.00	0.44
1:A:356:SER:HA	1:A:415:ALA:O	2.18	0.43
2:B:161:MET:HE1	2:B:403:LEU:HD13	2.00	0.43
2:B:381:ARG:O	2:B:384:LYS:HE2	2.18	0.43
1:A:232:PRO:HG3	1:A:470:PHE:CE2	2.53	0.43
1:C:35:VAL:N	1:C:70:ILE:O	2.42	0.43
2:D:299:PRO:HG3	1:E:375:PRO:O	2.19	0.43
1:E:283:CYS:HB3	1:E:332:SER:OG	2.18	0.43
1:E:34:VAL:HG13	1:E:69:THR:HG23	1.99	0.43
2:F:316:TYR:O	2:F:331:GLN:NE2	2.51	0.43
2:B:309:TYR:HB2	2:B:349:LEU:HD12	2.00	0.43
1:E:310:PRO:HD2	1:E:313:LYS:HD2	2.00	0.43
3:K:130:LEU:O	3:K:133:LEU:HG	2.19	0.43
2:B:38:LEU:HD23	2:B:78:GLN:HB3	2.01	0.43

Continued on next page...

Continued from previous page...

Atom-1	Atom-2	Interatomic distance (Å)	Clash overlap (Å)
2:F:30:THR:HG23	3:G:196:LYS:HB3	2.00	0.43
3:K:189:VAL:HG22	3:K:200:ASN:HA	2.01	0.43
1:A:234:LEU:HD23	1:A:274:ASN:ND2	2.34	0.43
1:C:201:GLU:HA	1:C:205:LYS:HA	2.01	0.43
1:C:278:ILE:HD13	1:C:351:SER:HB3	2.00	0.43
2:D:220:GLU:HA	2:D:223:ARG:NH1	2.34	0.43
1:A:471:TYR:HB3	1:A:479:PRO:HD3	2.01	0.43
1:C:111:PRO:HD3	1:C:132:ALA:HA	2.00	0.43
1:A:25:GLY:O	1:A:85:VAL:N	2.40	0.43
1:A:234:LEU:HD11	1:A:540:ILE:HB	2.01	0.43
2:D:153:THR:HG22	2:D:155:VAL:H	1.83	0.43
2:D:164:ILE:HD13	2:D:332:ILE:HD11	2.00	0.43
2:D:178:LEU:O	2:D:180:HIS:ND1	2.52	0.43
1:E:163:GLU:OE1	1:E:170:HIS:ND1	2.51	0.43
2:F:214:ALA:HB1	2:F:217:VAL:HG22	2.00	0.43
2:F:442:THR:HG22	2:F:460:GLN:NE2	2.33	0.43
1:A:428:THR:O	1:A:432:LEU:HG	2.19	0.43
2:D:57:LEU:HD11	2:D:63:ARG:CZ	2.48	0.43
1:E:267:GLN:HG2	1:E:300:LEU:HD21	2.00	0.43
2:F:393:ARG:NH1	2:F:459:ASP:OD1	2.47	0.43
1:A:238:ARG:HD3	1:A:546:MET:SD	2.59	0.43
2:B:260:LEU:HD13	2:B:318:ARG:HD3	2.01	0.43
1:C:48:LEU:HD13	1:C:57:VAL:CG1	2.49	0.43
1:C:255:PRO:HD3	1:C:438:PHE:CE1	2.53	0.43
2:D:39:VAL:N	2:D:77:VAL:O	2.45	0.43
2:D:149:GLU:HA	2:D:391:MET:HG2	2.00	0.42
2:D:168:GLN:OE1	2:D:382:LEU:HB2	2.19	0.42
1:E:32:GLY:O	1:E:76:THR:HG21	2.18	0.42
2:B:213:ALA:HB3	2:B:278:LEU:HD23	2.00	0.42
2:B:338:PRO:HG2	2:B:344:HIS:CE1	2.54	0.42
1:C:197:ILE:HG13	1:C:211:LEU:HD12	2.01	0.42
1:C:281:VAL:HA	1:C:318:VAL:HB	2.01	0.42
2:D:111:ARG:HB2	2:D:113:PHE:CE1	2.54	0.42
2:D:253:ILE:HD11	2:D:288:LEU:N	2.34	0.42
2:B:80:PHE:HA	2:B:250:ILE:HB	2.01	0.42
2:B:411:LYS:HB3	2:B:411:LYS:HE2	1.72	0.42
2:D:252:ARG:HD2	2:D:287:ALA:HB2	2.00	0.42
2:F:114:ASP:N	2:F:118:ARG:O	2.43	0.42
3:G:138:ILE:N	3:G:191:SER:O	2.49	0.42
1:A:520:LEU:HD11	1:A:582:SER:HB2	2.01	0.42
2:B:403:LEU:HD11	2:B:461:ALA:CB	2.46	0.42

Continued on next page...

Continued from previous page...

Atom-1	Atom-2	Interatomic distance (Å)	Clash overlap (Å)
1:C:104:ILE:HG22	1:C:112:LEU:HD12	2.02	0.42
1:E:43:CYS:SG	1:E:44:ALA:N	2.93	0.42
2:B:134:ILE:HD12	2:B:257:ARG:HB2	2.01	0.42
2:B:208:PHE:HD2	2:B:275:LEU:HG	1.85	0.42
1:C:376:ALA:HB2	1:C:382:ALA:HA	2.01	0.42
2:D:31:VAL:O	2:D:88:VAL:HG13	2.20	0.42
2:D:67:VAL:HG12	2:D:77:VAL:HG22	2.01	0.42
1:E:62:ARG:O	1:E:69:THR:N	2.52	0.42
1:E:186:ALA:HB1	1:E:191:TYR:HE2	1.83	0.42
1:E:281:VAL:HG21	1:E:336:GLY:HA3	2.01	0.42
3:K:122:GLN:HB2	3:K:152:MET:SD	2.59	0.42
2:B:208:PHE:CD2	2:B:275:LEU:HG	2.55	0.42
2:B:355:GLU:OE1	2:B:382:LEU:HD11	2.19	0.42
1:C:418:PRO:HG3	1:C:423:PHE:HE1	1.84	0.42
2:D:325:ARG:HG3	3:K:231:PHE:CE2	2.54	0.42
2:F:304:TYR:CZ	2:F:346:ILE:HD11	2.54	0.42
3:G:215:LEU:HD23	3:G:215:LEU:HA	1.88	0.42
1:C:73:TYR:HD2	1:C:108:ILE:HD13	1.85	0.42
2:F:150:MET:SD	2:F:392:THR:HG21	2.59	0.42
1:A:280:TYR:HD1	1:A:353:ILE:HB	1.84	0.42
1:A:344:ARG:HB2	1:A:410:VAL:HG23	2.02	0.42
1:C:217:VAL:CG1	1:C:334:TYR:HB3	2.49	0.42
1:E:43:CYS:SG	1:E:60:VAL:HG21	2.59	0.42
2:F:178:LEU:HD21	2:F:362:ARG:HD3	2.02	0.42
5:M:194:GLU:OE1	5:M:197:ARG:NH1	2.52	0.42
1:A:40:MET:HG2	1:A:87:ARG:HD3	2.02	0.42
1:A:74:GLU:HA	1:A:325:PRO:HG3	2.02	0.42
2:F:469:PRO:HD2	2:F:472:MET:CE	2.50	0.42
2:D:338:PRO:HG3	2:D:344:HIS:CE1	2.55	0.41
1:C:416:VAL:HG21	1:C:428:THR:HG23	2.02	0.41
2:D:169:LYS:O	2:D:354:THR:HB	2.20	0.41
2:D:370:TYR:O	2:D:446:GLN:N	2.37	0.41
1:E:77:ALA:HA	2:F:49:TYR:HD2	1.85	0.41
1:E:395:ALA:HB2	1:E:412:ILE:HG13	2.02	0.41
2:F:57:LEU:CD2	2:F:86:ILE:HG12	2.50	0.41
4:L:95:VAL:O	4:L:99:ILE:HG12	2.20	0.41
1:A:100:LEU:H	1:A:100:LEU:HG	1.52	0.41
2:B:309:TYR:HD1	2:B:349:LEU:HD12	1.84	0.41
2:B:361:ASP:CB	2:B:374:ASN:HB2	2.51	0.41
1:C:359:ARG:HA	1:C:359:ARG:HD2	1.60	0.41
2:B:210:ILE:O	2:B:238:THR:HA	2.20	0.41

Continued on next page...

Continued from previous page...

Atom-1	Atom-2	Interatomic distance (Å)	Clash overlap (Å)
1:C:254:ILE:HD11	1:C:439:TRP:HE3	1.84	0.41
1:C:367:ILE:O	1:C:371:LEU:HD23	2.20	0.41
1:E:286:ARG:HD2	1:E:289:GLU:HG3	2.02	0.41
2:B:168:GLN:HB2	2:B:382:LEU:HD12	2.03	0.41
1:E:215:TRP:NE1	1:E:219:VAL:O	2.52	0.41
2:F:257:ARG:HH12	2:F:314:THR:HG21	1.85	0.41
3:K:191:SER:HA	3:K:198:GLU:HA	2.02	0.41
1:E:108:ILE:O	1:E:110:ARG:N	2.51	0.41
2:B:289:ARG:HG3	1:C:382:ALA:HB1	2.02	0.41
2:B:355:GLU:OE1	2:B:382:LEU:HD21	2.21	0.41
2:B:473:LEU:HD12	2:B:481:LEU:HD11	2.03	0.41
1:C:334:TYR:HA	1:C:337:ILE:HG22	2.03	0.41
2:D:144:ARG:NH1	2:D:319:ALA:O	2.52	0.41
2:D:168:GLN:HB3	2:D:382:LEU:HD22	2.03	0.41
2:F:166:ARG:HD3	2:F:193:LEU:HD11	2.03	0.41
1:A:334:TYR:HA	1:A:337:ILE:HG22	2.02	0.41
2:B:271:GLU:HG2	2:B:326:ASN:HB2	2.02	0.41
1:C:98:PRO:HD2	1:C:193:LEU:CD1	2.50	0.41
3:I:106:LYS:HB2	4:J:99:ILE:HD11	2.03	0.41
3:K:210:LEU:HD12	3:K:210:LEU:HA	1.89	0.41
4:L:99:ILE:O	4:L:103:ILE:HG12	2.21	0.41
1:A:61:ILE:HD11	1:A:71:GLN:HB3	2.02	0.41
2:B:374:ASN:O	2:B:377:PRO:HD2	2.21	0.41
2:B:406:LYS:HD3	2:B:406:LYS:HA	1.82	0.41
2:F:173:PHE:HB3	2:F:337:MET:SD	2.61	0.41
1:A:358:SER:HB3	1:A:417:SER:H	1.86	0.40
2:B:26:LEU:O	2:B:94:GLU:HA	2.21	0.40
2:B:451:ASP:OD1	2:B:451:ASP:N	2.52	0.40
1:C:94:VAL:HG21	1:C:338:THR:HB	2.03	0.40
2:F:458:LEU:HD23	2:F:458:LEU:HA	1.93	0.40
1:C:32:GLY:O	1:C:76:THR:HG21	2.21	0.40
2:D:110:GLY:HA2	2:D:235:LEU:O	2.21	0.40
2:F:395:ASP:OD2	2:F:462:TRP:NE1	2.47	0.40
2:B:309:TYR:HB2	2:B:349:LEU:CD1	2.51	0.40
1:C:141:PHE:CE1	1:C:159:GLY:HA3	2.56	0.40
1:C:192:THR:HG23	1:C:194:ASP:H	1.86	0.40
1:A:290:MET:SD	1:A:317:LEU:HD23	2.61	0.40
1:C:242:ALA:O	1:C:482:ARG:HD3	2.21	0.40
1:E:141:PHE:CE1	1:E:159:GLY:HA3	2.56	0.40
2:F:55:LEU:HG	2:F:93:VAL:HG22	2.04	0.40
3:I:169:LEU:HD23	3:I:172:ILE:HB	2.04	0.40

Continued on next page...

Continued from previous page...

Atom-1	Atom-2	Interatomic distance (Å)	Clash overlap (Å)
3:K:166:ARG:H	3:K:166:ARG:HG2	1.73	0.40

There are no symmetry-related clashes.

5.3 Torsion angles [i](#)

5.3.1 Protein backbone [i](#)

In the following table, the Percentiles column shows the percent Ramachandran outliers of the chain as a percentile score with respect to all PDB entries followed by that with respect to all EM entries.

The Analysed column shows the number of residues for which the backbone conformation was analysed, and the total number of residues.

Mol	Chain	Analysed	Favoured	Allowed	Outliers	Percentiles	
1	A	591/639 (92%)	566 (96%)	24 (4%)	1 (0%)	47	77
1	C	590/639 (92%)	573 (97%)	17 (3%)	0	100	100
1	E	588/639 (92%)	564 (96%)	24 (4%)	0	100	100
2	B	460/517 (89%)	438 (95%)	21 (5%)	1 (0%)	47	77
2	D	455/517 (88%)	426 (94%)	28 (6%)	1 (0%)	47	77
2	F	455/517 (88%)	436 (96%)	19 (4%)	0	100	100
3	G	185/233 (79%)	181 (98%)	4 (2%)	0	100	100
3	I	215/233 (92%)	211 (98%)	4 (2%)	0	100	100
3	K	194/233 (83%)	188 (97%)	6 (3%)	0	100	100
4	H	84/114 (74%)	84 (100%)	0	0	100	100
4	J	106/114 (93%)	103 (97%)	3 (3%)	0	100	100
4	L	86/114 (75%)	85 (99%)	1 (1%)	0	100	100
5	M	212/256 (83%)	206 (97%)	6 (3%)	0	100	100
6	N	109/118 (92%)	106 (97%)	3 (3%)	0	100	100
7	P	435/478 (91%)	429 (99%)	6 (1%)	0	100	100
All	All	4765/5361 (89%)	4596 (96%)	166 (4%)	3 (0%)	54	81

All (3) Ramachandran outliers are listed below:

Mol	Chain	Res	Type
2	B	84	SER
1	A	101	MET
2	D	334	ILE

5.3.2 Protein sidechains ⓘ

In the following table, the Percentiles column shows the percent sidechain outliers of the chain as a percentile score with respect to all PDB entries followed by that with respect to all EM entries.

The Analysed column shows the number of residues for which the sidechain conformation was analysed, and the total number of residues.

Mol	Chain	Analysed	Rotameric	Outliers	Percentiles	
1	A	373/537 (70%)	372 (100%)	1 (0%)	92	96
1	C	336/537 (63%)	332 (99%)	4 (1%)	71	83
1	E	356/537 (66%)	356 (100%)	0	100	100
2	B	312/444 (70%)	308 (99%)	4 (1%)	69	82
2	D	308/444 (69%)	308 (100%)	0	100	100
2	F	318/444 (72%)	317 (100%)	1 (0%)	92	96
3	G	93/208 (45%)	93 (100%)	0	100	100
3	I	84/208 (40%)	84 (100%)	0	100	100
3	K	83/208 (40%)	83 (100%)	0	100	100
4	H	20/94 (21%)	20 (100%)	0	100	100
4	J	18/94 (19%)	18 (100%)	0	100	100
4	L	17/94 (18%)	17 (100%)	0	100	100
5	M	69/221 (31%)	69 (100%)	0	100	100
All	All	2387/4070 (59%)	2377 (100%)	10 (0%)	91	95

All (10) residues with a non-rotameric sidechain are listed below:

Mol	Chain	Res	Type
1	A	100	LEU
2	B	308	MET
2	B	310	THR
2	B	329	ILE
2	B	330	THR
1	C	192	THR

Continued on next page...

Continued from previous page...

Mol	Chain	Res	Type
1	C	193	LEU
1	C	359	ARG
1	C	406	ARG
2	F	354	THR

Sometimes sidechains can be flipped to improve hydrogen bonding and reduce clashes. All (6) such sidechains are listed below:

Mol	Chain	Res	Type
1	A	346	GLN
2	B	402	GLN
2	B	446	GLN
2	D	168	GLN
2	D	344	HIS
2	F	460	GLN

5.3.3 RNA [i](#)

There are no RNA molecules in this entry.

5.4 Non-standard residues in protein, DNA, RNA chains [i](#)

There are no non-standard protein/DNA/RNA residues in this entry.

5.5 Carbohydrates [i](#)

There are no monosaccharides in this entry.

5.6 Ligand geometry [i](#)

Of 2 ligands modelled in this entry, 1 is monoatomic - leaving 1 for Mogul analysis.

In the following table, the Counts columns list the number of bonds (or angles) for which Mogul statistics could be retrieved, the number of bonds (or angles) that are observed in the model and the number of bonds (or angles) that are defined in the Chemical Component Dictionary. The Link column lists molecule types, if any, to which the group is linked. The Z score for a bond length (or angle) is the number of standard deviations the observed value is removed from the expected value. A bond length (or angle) with $|Z| > 2$ is considered an outlier worth inspection. RMSZ is the root-mean-square of all Z scores of the bond lengths (or angles).

Mol	Type	Chain	Res	Link	Bond lengths			Bond angles		
					Counts	RMSZ	# Z > 2	Counts	RMSZ	# Z > 2
8	ADP	A	701	9	24,29,29	0.95	1 (4%)	29,45,45	1.50	4 (13%)

In the following table, the Chirals column lists the number of chiral outliers, the number of chiral centers analysed, the number of these observed in the model and the number defined in the Chemical Component Dictionary. Similar counts are reported in the Torsion and Rings columns. '-' means no outliers of that kind were identified.

Mol	Type	Chain	Res	Link	Chirals	Torsions	Rings
8	ADP	A	701	9	-	3/12/32/32	0/3/3/3

All (1) bond length outliers are listed below:

Mol	Chain	Res	Type	Atoms	Z	Observed(Å)	Ideal(Å)
8	A	701	ADP	C5-C4	2.37	1.47	1.40

All (4) bond angle outliers are listed below:

Mol	Chain	Res	Type	Atoms	Z	Observed(°)	Ideal(°)
8	A	701	ADP	PA-O3A-PB	-3.99	119.14	132.83
8	A	701	ADP	C3'-C2'-C1'	3.27	105.90	100.98
8	A	701	ADP	N3-C2-N1	-3.08	123.86	128.68
8	A	701	ADP	C4-C5-N7	-2.56	106.73	109.40

There are no chirality outliers.

All (3) torsion outliers are listed below:

Mol	Chain	Res	Type	Atoms
8	A	701	ADP	C5'-O5'-PA-O1A
8	A	701	ADP	C5'-O5'-PA-O3A
8	A	701	ADP	C5'-O5'-PA-O2A

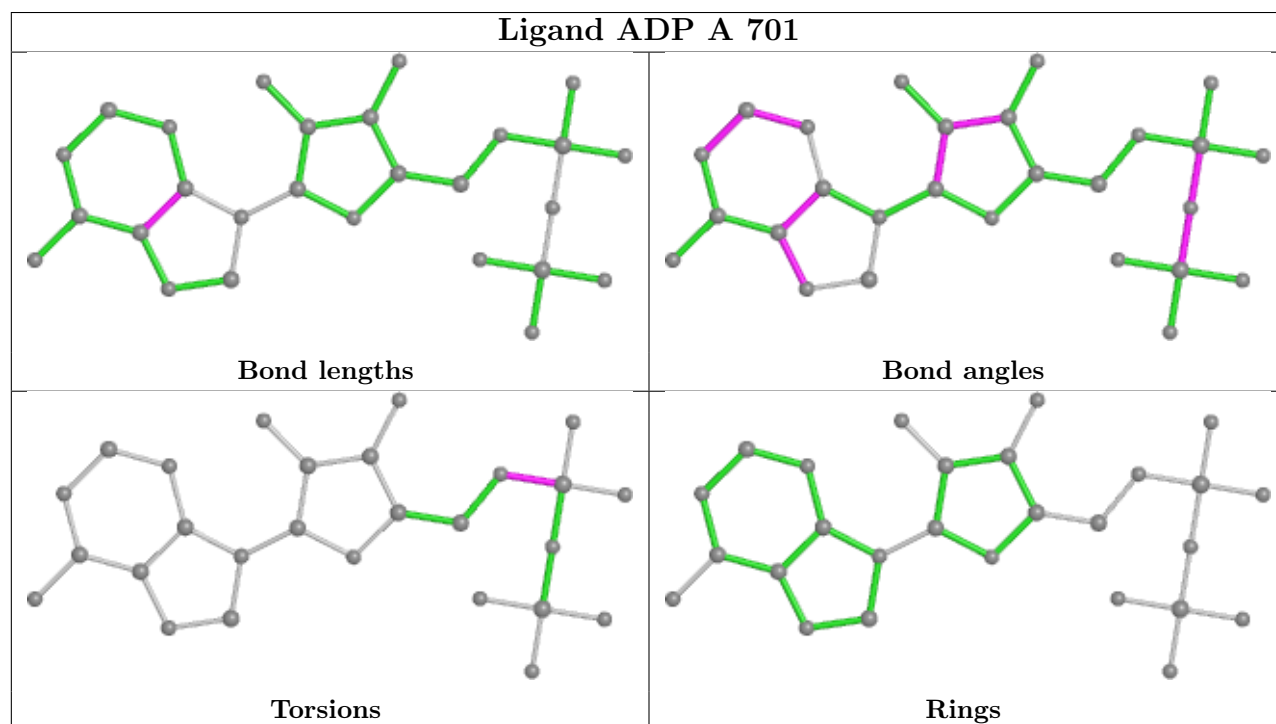
There are no ring outliers.

1 monomer is involved in 1 short contact:

Mol	Chain	Res	Type	Clashes	Symm-Clashes
8	A	701	ADP	1	0

The following is a two-dimensional graphical depiction of Mogul quality analysis of bond lengths, bond angles, torsion angles, and ring geometry for all instances of the Ligand of Interest. In addition, ligands with molecular weight > 250 and outliers as shown on the validation Tables will

also be included. For torsion angles, if less than 5% of the Mogul distribution of torsion angles is within 10 degrees of the torsion angle in question, then that torsion angle is considered an outlier. Any bond that is central to one or more torsion angles identified as an outlier by Mogul will be highlighted in the graph. For rings, the root-mean-square deviation (RMSD) between the ring in question and similar rings identified by Mogul is calculated over all ring torsion angles. If the average RMSD is greater than 60 degrees and the minimal RMSD between the ring in question and any Mogul-identified rings is also greater than 60 degrees, then that ring is considered an outlier. The outliers are highlighted in purple. The color gray indicates Mogul did not find sufficient equivalents in the CSD to analyse the geometry.



5.7 Other polymers [i](#)

There are no such residues in this entry.

5.8 Polymer linkage issues [i](#)

There are no chain breaks in this entry.

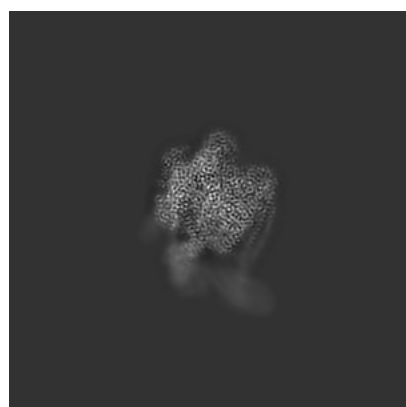
6 Map visualisation [i](#)

This section contains visualisations of the EMDB entry EMD-25998. These allow visual inspection of the internal detail of the map and identification of artifacts.

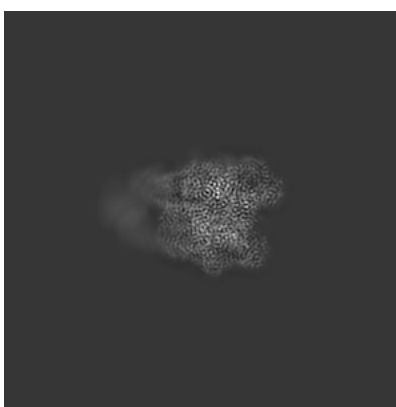
No raw map or half-maps were deposited for this entry and therefore no images, graphs, etc. pertaining to the raw map can be shown.

6.1 Orthogonal projections [i](#)

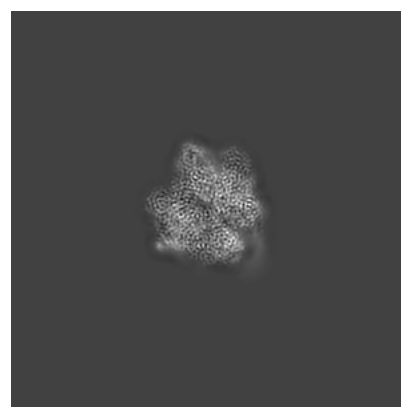
6.1.1 Primary map



X



Y

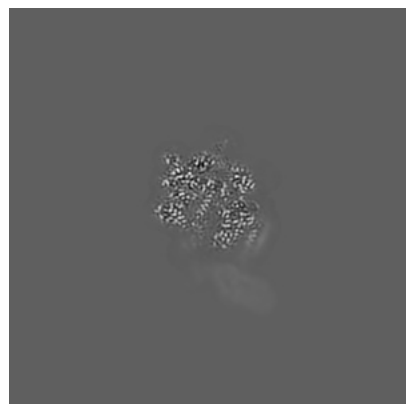


Z

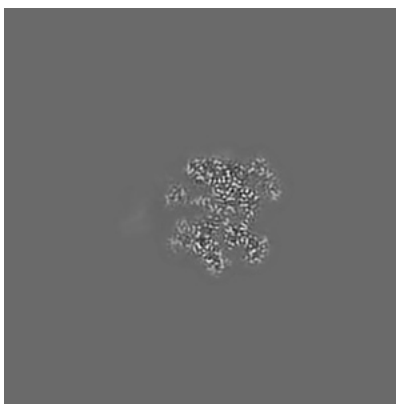
The images above show the map projected in three orthogonal directions.

6.2 Central slices [i](#)

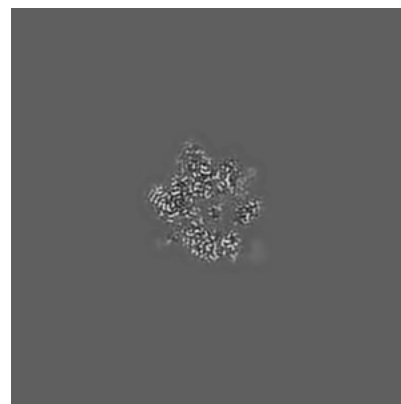
6.2.1 Primary map



X Index: 200



Y Index: 200

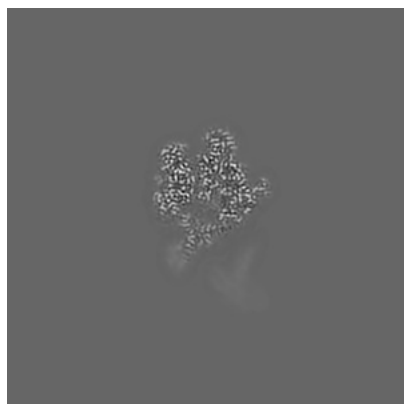


Z Index: 200

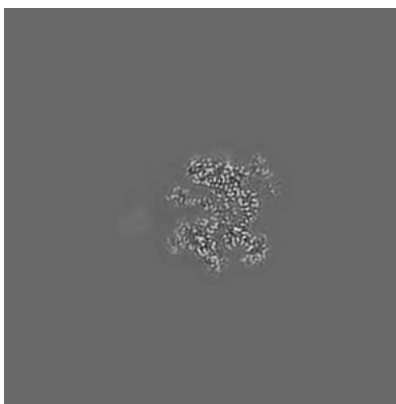
The images above show central slices of the map in three orthogonal directions.

6.3 Largest variance slices [i](#)

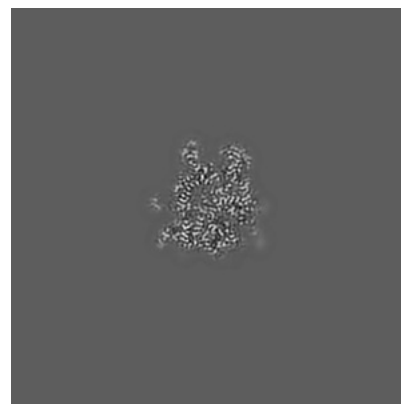
6.3.1 Primary map



X Index: 213



Y Index: 198



Z Index: 222

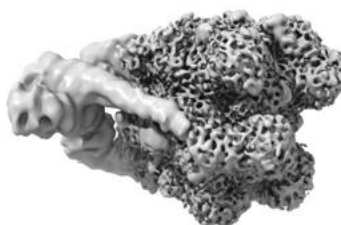
The images above show the largest variance slices of the map in three orthogonal directions.

6.4 Orthogonal surface views [i](#)

6.4.1 Primary map



X



Y



Z

The images above show the 3D surface view of the map at the recommended contour level 0.2. These images, in conjunction with the slice images, may facilitate assessment of whether an appropriate contour level has been provided.

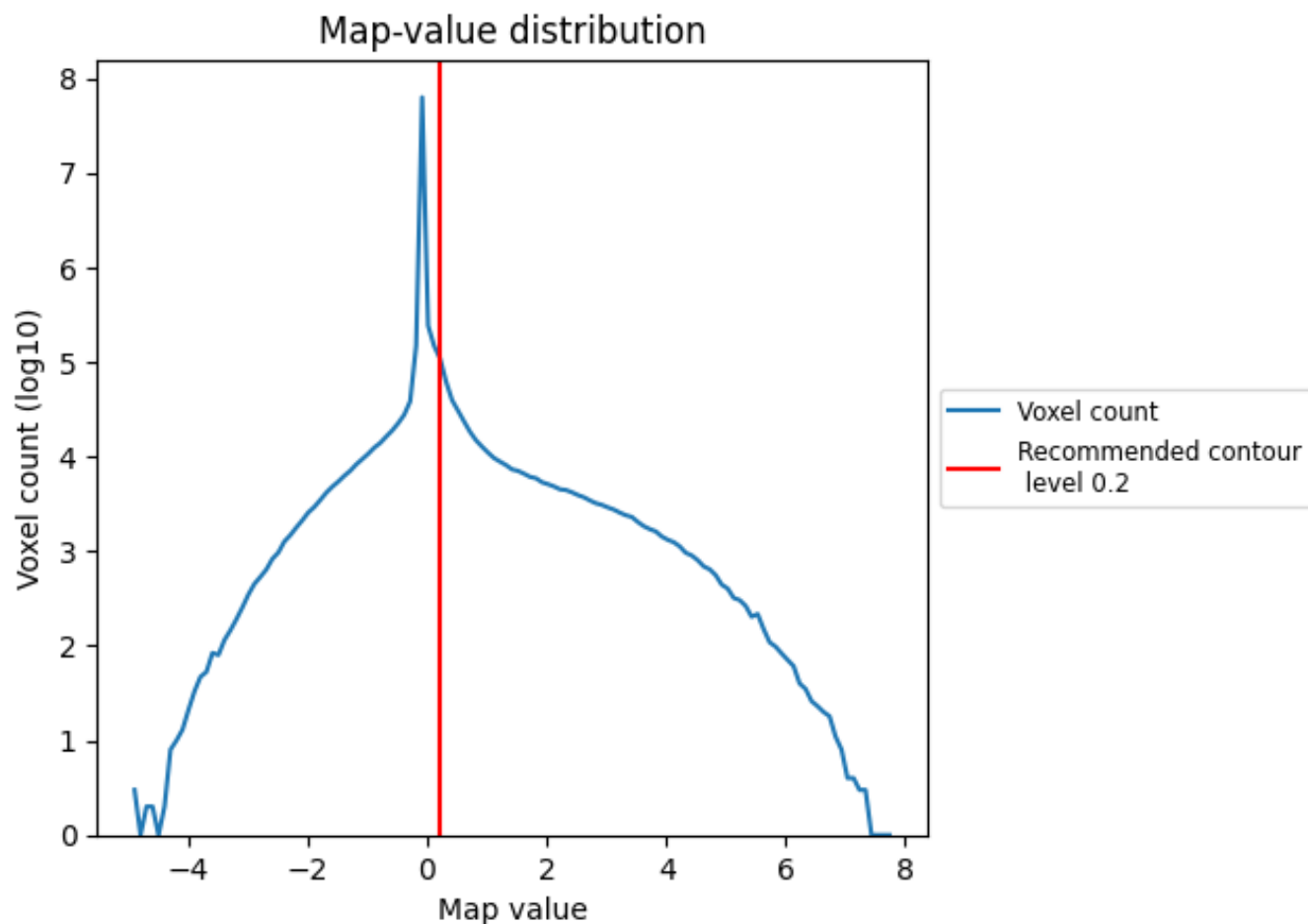
6.5 Mask visualisation

This section was not generated. No masks/segmentation were deposited.

7 Map analysis [i](#)

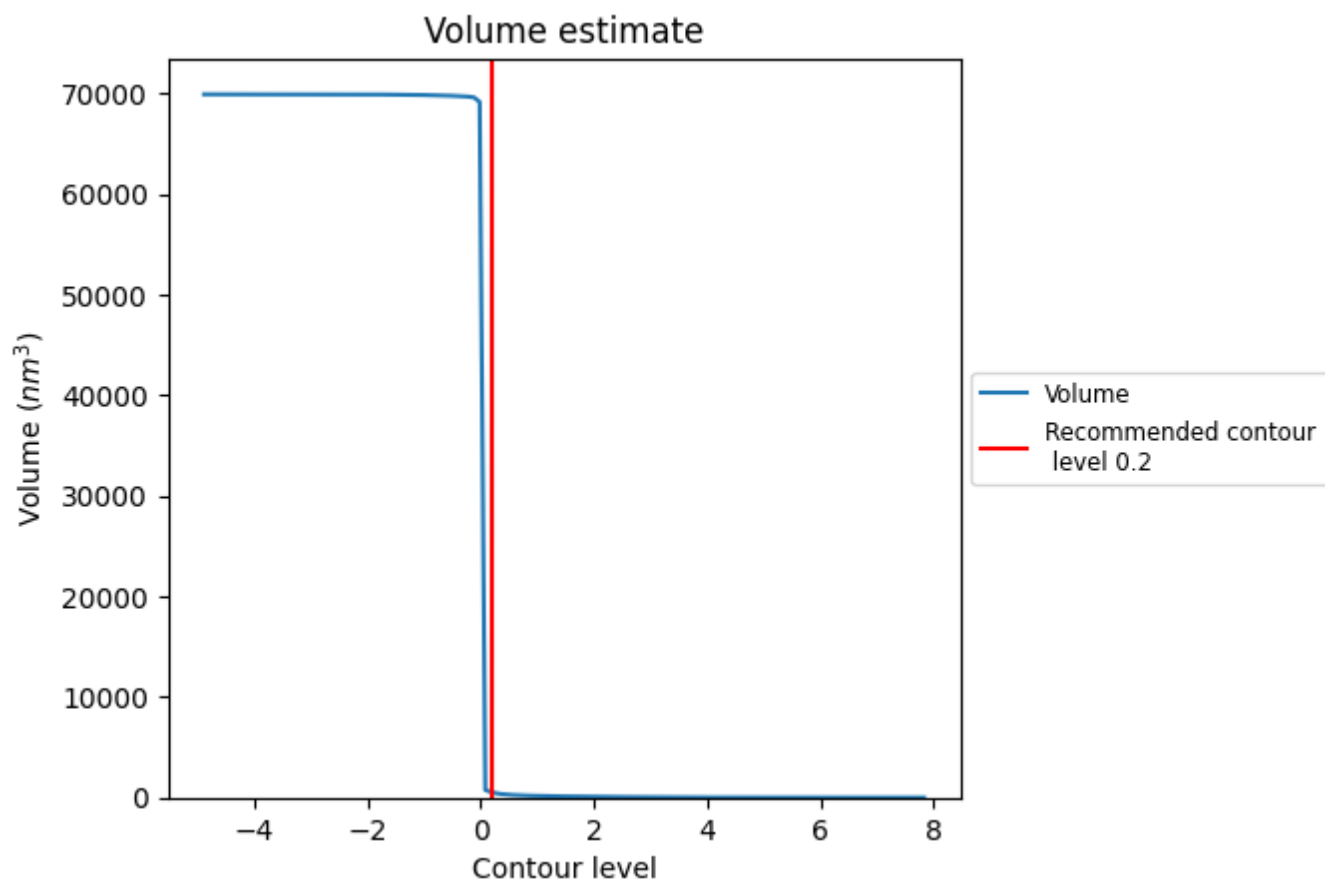
This section contains the results of statistical analysis of the map.

7.1 Map-value distribution [i](#)



The map-value distribution is plotted in 128 intervals along the x-axis. The y-axis is logarithmic. A spike in this graph at zero usually indicates that the volume has been masked.

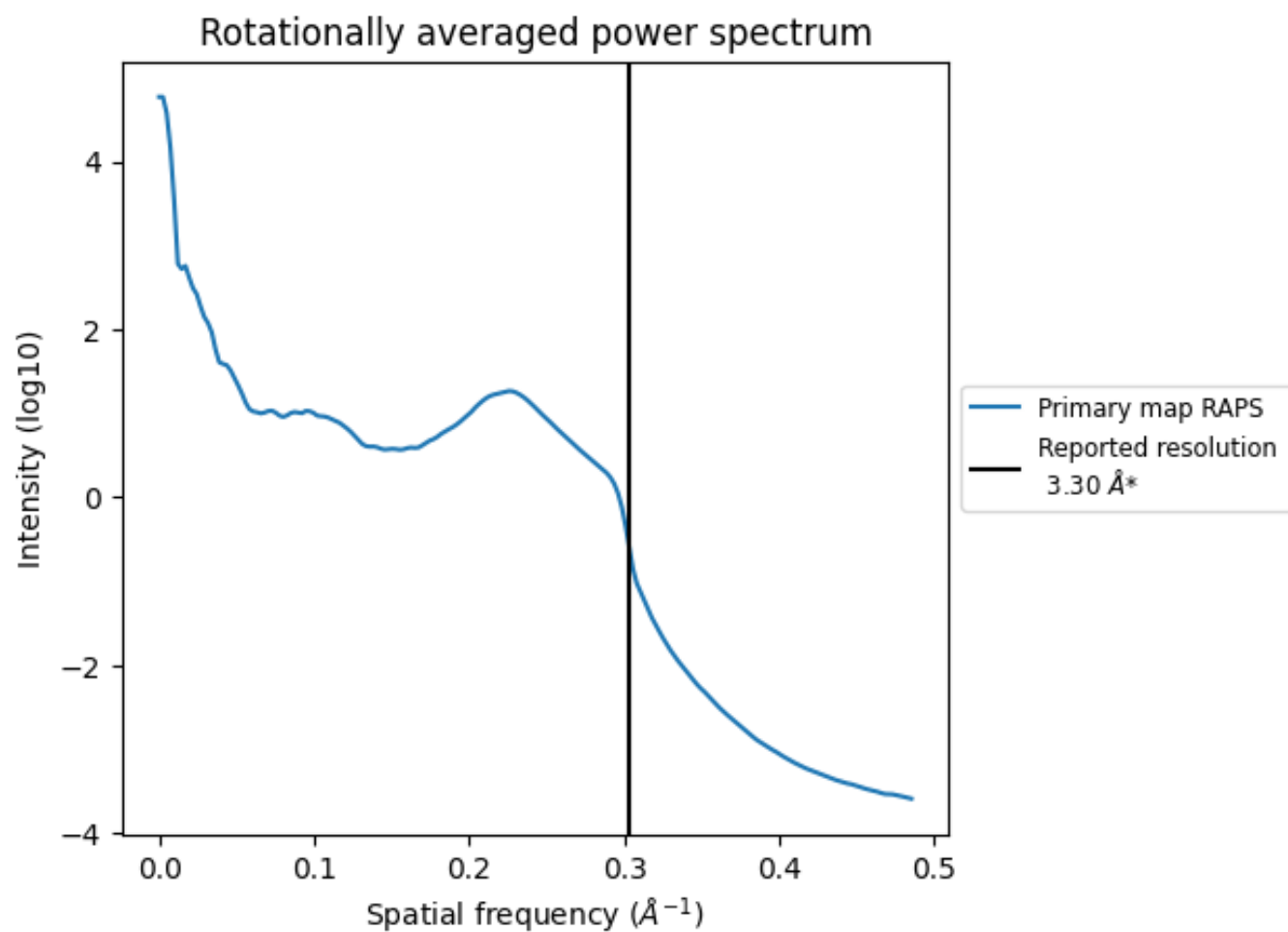
7.2 Volume estimate [i](#)



The volume at the recommended contour level is 530 nm^3 ; this corresponds to an approximate mass of 479 kDa.

The volume estimate graph shows how the enclosed volume varies with the contour level. The recommended contour level is shown as a vertical line and the intersection between the line and the curve gives the volume of the enclosed surface at the given level.

7.3 Rotationally averaged power spectrum ⓘ



*Reported resolution corresponds to spatial frequency of 0.303 Å⁻¹

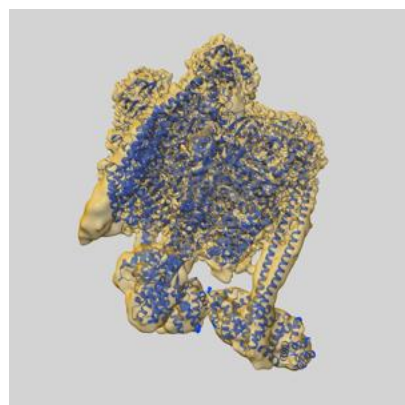
8 Fourier-Shell correlation ⓘ

This section was not generated. No FSC curve or half-maps provided.

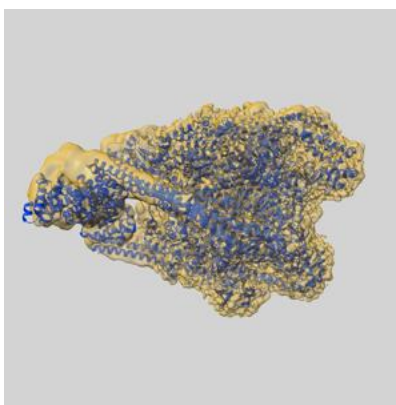
9 Map-model fit [i](#)

This section contains information regarding the fit between EMDB map EMD-25998 and PDB model 7TMP. Per-residue inclusion information can be found in section [3](#) on page [8](#).

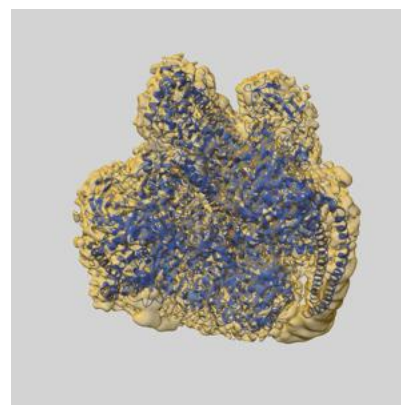
9.1 Map-model overlay [i](#)



X



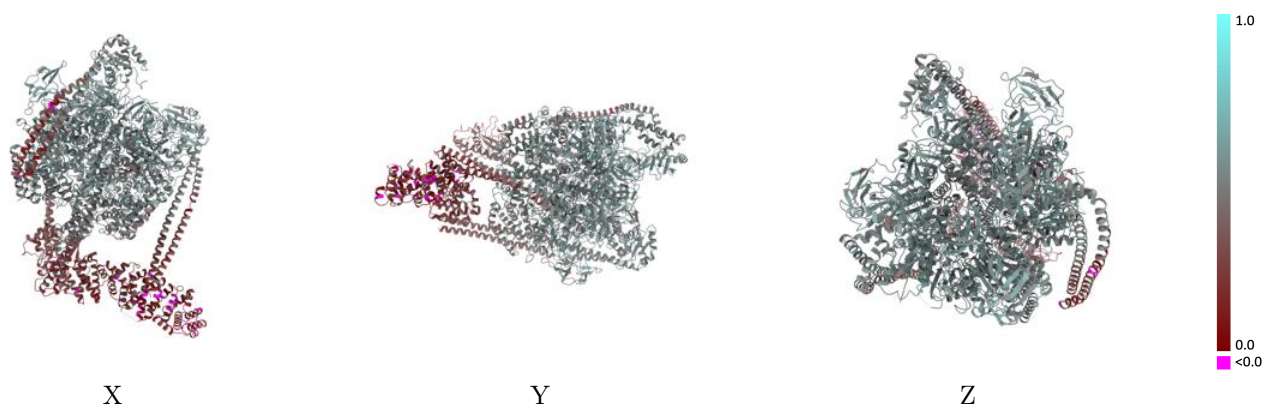
Y



Z

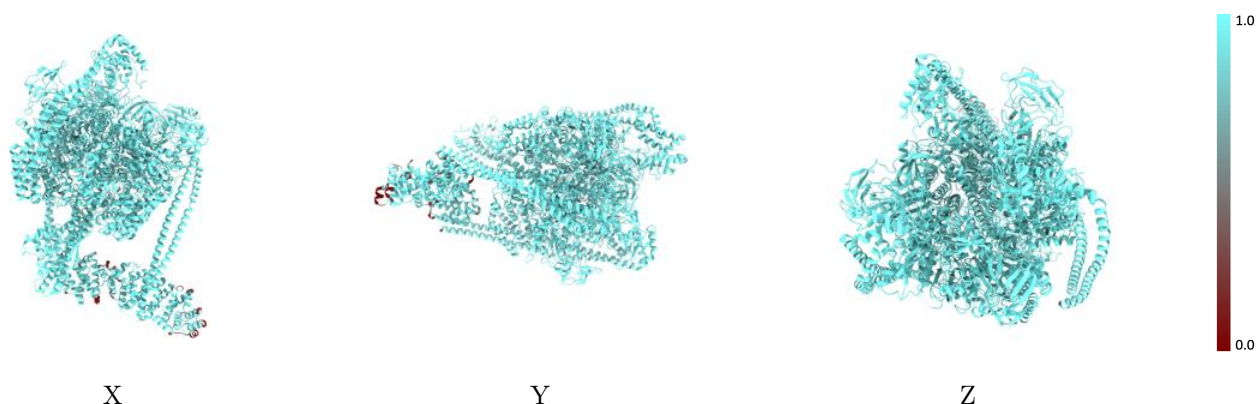
The images above show the 3D surface view of the map at the recommended contour level 0.2 at 50% transparency in yellow overlaid with a ribbon representation of the model coloured in blue. These images allow for the visual assessment of the quality of fit between the atomic model and the map.

9.2 Q-score mapped to coordinate model [i](#)



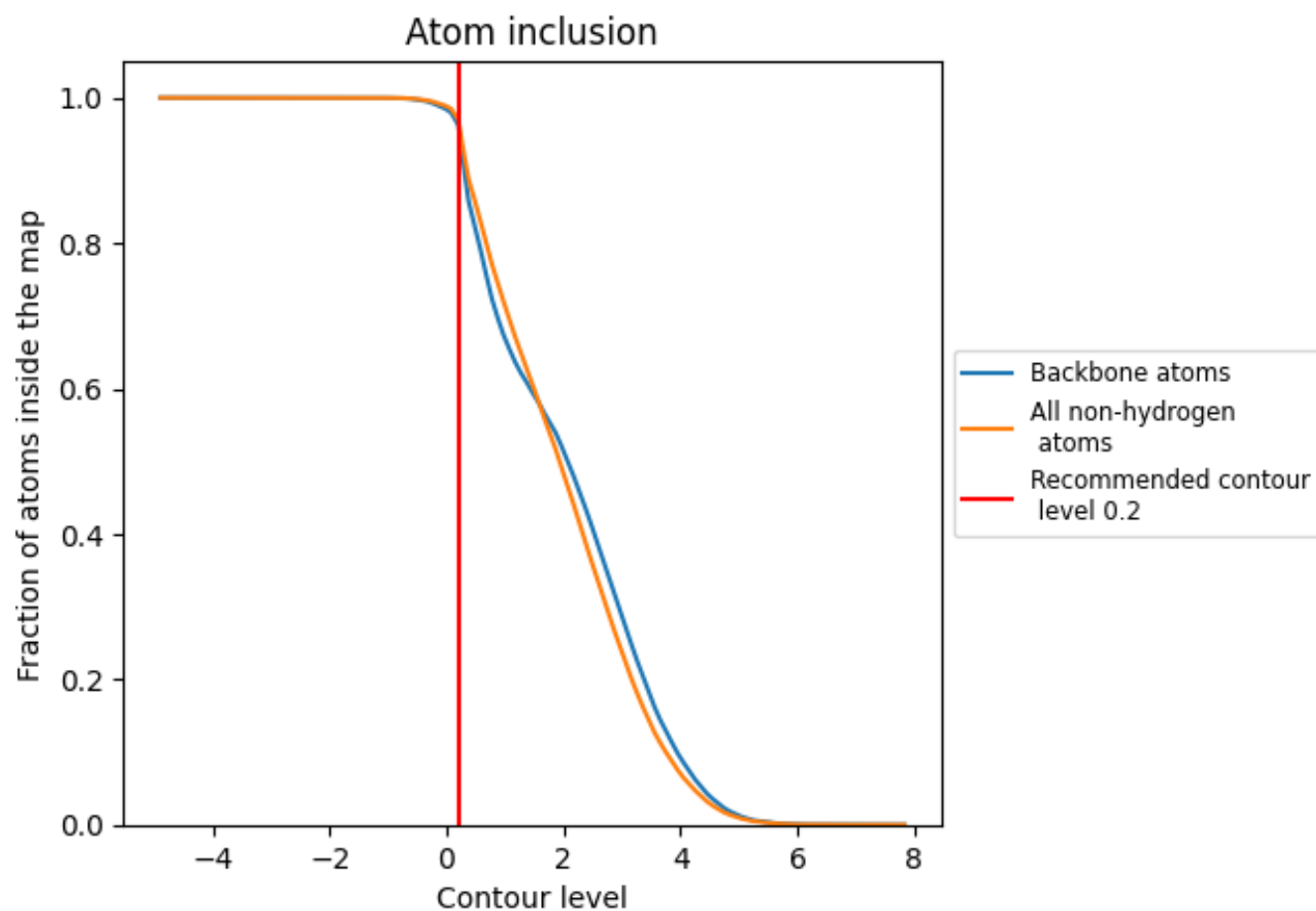
The images above show the model with each residue coloured according to its Q-score. This shows their resolvability in the map with higher Q-score values reflecting better resolvability. Please note: Q-score is calculating the resolvability of atoms, and thus high values are only expected at resolutions at which atoms can be resolved. Low Q-score values may therefore be expected for many entries.

9.3 Atom inclusion mapped to coordinate model [i](#)



The images above show the model with each residue coloured according to its atom inclusion. This shows to what extent they are inside the map at the recommended contour level (0.2).























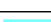

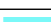







9.4 Atom inclusion [i](#)



At the recommended contour level, 96% of all backbone atoms, 97% of all non-hydrogen atoms, are inside the map.

9.5 Map-model fit summary ⓘ

The table lists the average atom inclusion at the recommended contour level (0.2) and Q-score for the entire model and for each chain.

Chain	Atom inclusion	Q-score
All	 0.9701	 0.4920
A	 0.9761	 0.5480
B	 0.9722	 0.5520
C	 0.9771	 0.5290
D	 0.9692	 0.5430
E	 0.9741	 0.5360
F	 0.9699	 0.5480
G	 0.9835	 0.5020
H	 0.9855	 0.3750
I	 0.9778	 0.4770
J	 0.9813	 0.3660
K	 0.9920	 0.4950
L	 0.9938	 0.3660
M	 0.9753	 0.4200
N	 0.9982	 0.3000
P	 0.8901	 0.1600

