



# Full wwPDB X-ray Structure Validation Report ⓘ

May 22, 2020 – 02:17 am BST

PDB ID : 3TNW  
Title : Structure of CDK2/cyclin A in complex with CAN508  
Authors : Baumli, S.; Hole, A.J.; Endicott, J.A.  
Deposited on : 2011-09-02  
Resolution : 2.00 Å(reported)

This is a Full wwPDB X-ray Structure Validation Report for a publicly released PDB entry.

We welcome your comments at [validation@mail.wwpdb.org](mailto:validation@mail.wwpdb.org)

A user guide is available at

<https://www.wwpdb.org/validation/2017/XrayValidationReportHelp>

with specific help available everywhere you see the ⓘ symbol.

---

The following versions of software and data (see [references ⓘ](#)) were used in the production of this report:

MolProbity : 4.02b-467  
Mogul : 1.8.5 (274361), CSD as541be (2020)  
Xtriage (Phenix) : 1.13  
EDS : 2.11  
Percentile statistics : 20191225.v01 (using entries in the PDB archive December 25th 2019)  
Refmac : 5.8.0158  
CCP4 : 7.0.044 (Gargrove)  
Ideal geometry (proteins) : Engh & Huber (2001)  
Ideal geometry (DNA, RNA) : Parkinson et al. (1996)  
Validation Pipeline (wwPDB-VP) : 2.11

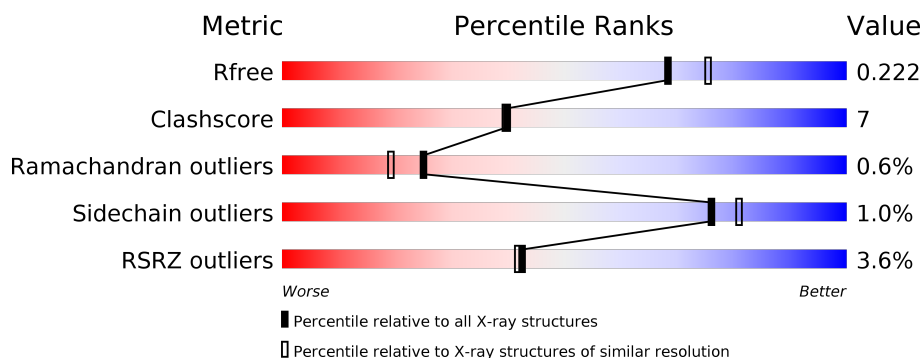
# 1 Overall quality at a glance

The following experimental techniques were used to determine the structure:

*X-RAY DIFFRACTION*

The reported resolution of this entry is 2.00 Å.

Percentile scores (ranging between 0-100) for global validation metrics of the entry are shown in the following graphic. The table shows the number of entries on which the scores are based.



Metric	Whole archive (#Entries)	Similar resolution (#Entries, resolution range(Å))
$R_{free}$	130704	8085 (2.00-2.00)
Clashscore	141614	9178 (2.00-2.00)
Ramachandran outliers	138981	9054 (2.00-2.00)
Sidechain outliers	138945	9053 (2.00-2.00)
RSRZ outliers	127900	7900 (2.00-2.00)

The table below summarises the geometric issues observed across the polymeric chains and their fit to the electron density. The red, orange, yellow and green segments on the lower bar indicate the fraction of residues that contain outliers for  $\geq 3$ , 2, 1 and 0 types of geometric quality criteria respectively. A grey segment represents the fraction of residues that are not modelled. The numeric value for each fraction is indicated below the corresponding segment, with a dot representing fractions  $\leq 5\%$ . The upper red bar (where present) indicates the fraction of residues that have poor fit to the electron density. The numeric value is given above the bar.

Mol	Chain	Length	Quality of chain
1	A	300	<div> <div>3%</div> <div> <div></div> <div>82%</div> <div>16%</div> <div>..</div> </div> </div>
1	C	300	<div> <div>4%</div> <div> <div></div> <div>81%</div> <div>16%</div> <div>..</div> </div> </div>
2	B	262	<div> <div>2%</div> <div> <div></div> <div>83%</div> <div>15%</div> <div>.</div> </div> </div>
2	D	262	<div> <div>6%</div> <div> <div></div> <div>84%</div> <div>13%</div> <div>.</div> </div> </div>

## 2 Entry composition

There are 5 unique types of molecules in this entry. The entry contains 9888 atoms, of which 0 are hydrogens and 0 are deuteriums.

In the tables below, the ZeroOcc column contains the number of atoms modelled with zero occupancy, the AltConf column contains the number of residues with at least one atom in alternate conformation and the Trace column contains the number of residues modelled with at most 2 atoms.

- Molecule 1 is a protein called Cyclin-dependent kinase 2.

Mol	Chain	Residues	Atoms						ZeroOcc	AltConf	Trace
1	A	296	Total	C	N	O	P	S	0	4	0
			2408	1565	411	423	1	8			
1	C	292	Total	C	N	O	P	S	0	3	0
			2359	1532	399	419	1	8			

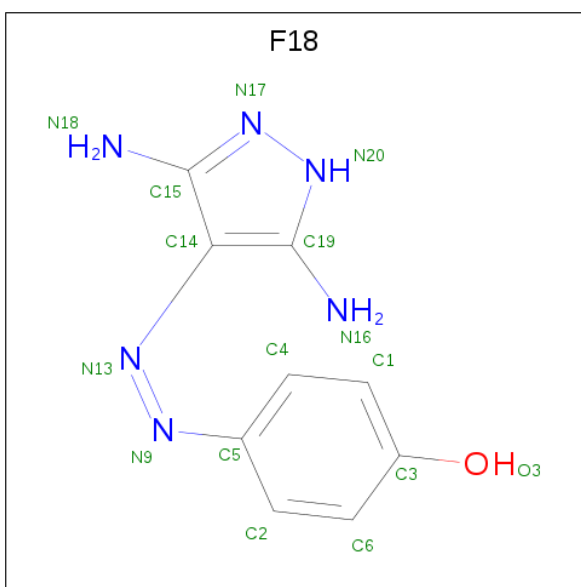
There are 4 discrepancies between the modelled and reference sequences:

Chain	Residue	Modelled	Actual	Comment	Reference
A	-1	GLY	-	EXPRESSION TAG	UNP P24941
A	0	SER	-	EXPRESSION TAG	UNP P24941
C	-1	GLY	-	EXPRESSION TAG	UNP P24941
C	0	SER	-	EXPRESSION TAG	UNP P24941

- Molecule 2 is a protein called Cyclin-A2.

Mol	Chain	Residues	Atoms					ZeroOcc	AltConf	Trace
2	B	257	Total	C	N	O	S	0	5	0
			2106	1368	339	388	11			
2	D	255	Total	C	N	O	S	0	2	0
			2069	1342	336	380	11			

- Molecule 3 is 4-[(E)-(3,5-DIAMINO-1H-PYRAZOL-4-YL)DIAZENYL]PHENOL (three-letter code: F18) (formula: C<sub>9</sub>H<sub>10</sub>N<sub>6</sub>O).



Mol	Chain	Residues	Atoms				ZeroOcc	AltConf
3	A	1	Total	C	N	O	0	0
			16	9	6	1		
3	C	1	Total	C	N	O	0	0
			16	9	6	1		

- Molecule 4 is SODIUM ION (three-letter code: NA) (formula: Na).

Mol	Chain	Residues	Atoms		ZeroOcc	AltConf
4	D	2	Total	Na	0	0
			2	2		

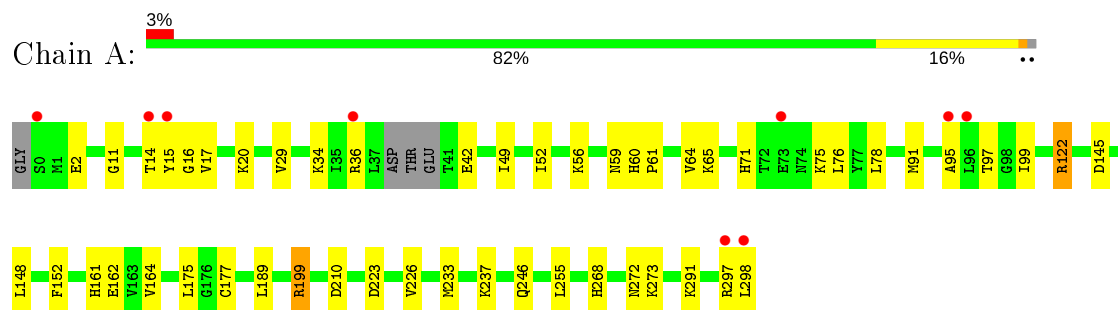
- Molecule 5 is water.

Mol	Chain	Residues	Atoms		ZeroOcc	AltConf
5	A	314	Total	O	0	0
			314	314		
5	B	262	Total	O	0	0
			262	262		
5	C	182	Total	O	0	0
			182	182		
5	D	154	Total	O	0	0
			154	154		

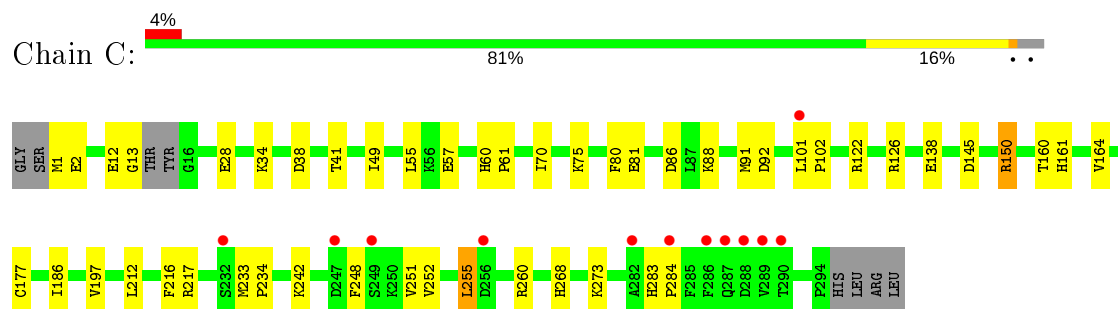
### 3 Residue-property plots [i](#)

These plots are drawn for all protein, RNA and DNA chains in the entry. The first graphic for a chain summarises the proportions of the various outlier classes displayed in the second graphic. The second graphic shows the sequence view annotated by issues in geometry and electron density. Residues are color-coded according to the number of geometric quality criteria for which they contain at least one outlier: green = 0, yellow = 1, orange = 2 and red = 3 or more. A red dot above a residue indicates a poor fit to the electron density ( $RSRZ > 2$ ). Stretches of 2 or more consecutive residues without any outlier are shown as a green connector. Residues present in the sample, but not in the model, are shown in grey.

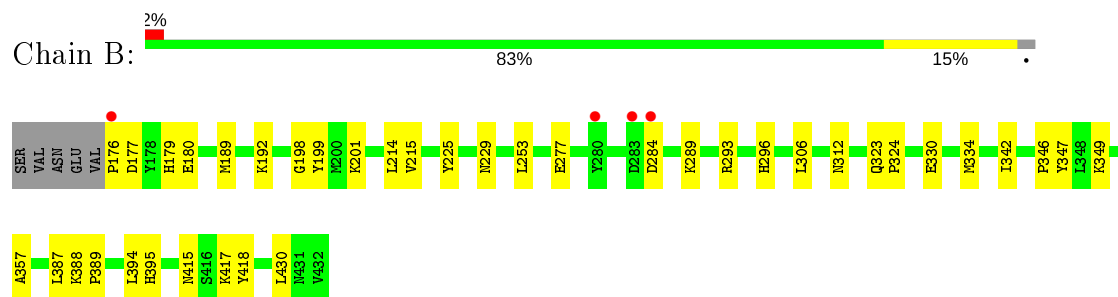
#### • Molecule 1: Cyclin-dependent kinase 2



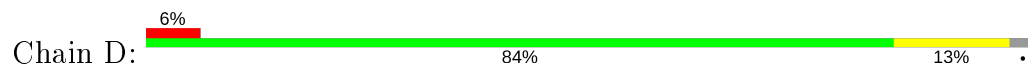
#### • Molecule 1: Cyclin-dependent kinase 2



#### • Molecule 2: Cyclin-A2



#### • Molecule 2: Cyclin-A2





## 4 Data and refinement statistics

Property	Value	Source
Space group	P 21 21 21	Depositor
Cell constants a, b, c, $\alpha$ , $\beta$ , $\gamma$	74.05Å 134.57Å 148.28Å 90.00° 90.00° 90.00°	Depositor
Resolution (Å)	42.94 – 2.00 42.94 – 2.00	Depositor EDS
% Data completeness (in resolution range)	99.7 (42.94-2.00) 99.7 (42.94-2.00)	Depositor EDS
$R_{merge}$	0.10	Depositor
$R_{sym}$	(Not available)	Depositor
$\langle I/\sigma(I) \rangle$ <sup>1</sup>	1.95 (at 2.00Å)	Xtriage
Refinement program	PHENIX 1.7.1 _743	Depositor
R, $R_{free}$	0.186 , 0.227 0.182 , 0.222	Depositor DCC
$R_{free}$ test set	5021 reflections (5.00%)	wwPDB-VP
Wilson B-factor (Å <sup>2</sup> )	29.2	Xtriage
Anisotropy	0.029	Xtriage
Bulk solvent $k_{sol}$ (e/Å <sup>3</sup> ), $B_{sol}$ (Å <sup>2</sup> )	0.35 , 50.7	EDS
L-test for twinning <sup>2</sup>	$\langle  L  \rangle = 0.48$ , $\langle L^2 \rangle = 0.31$	Xtriage
Estimated twinning fraction	No twinning to report.	Xtriage
$F_o, F_c$ correlation	0.95	EDS
Total number of atoms	9888	wwPDB-VP
Average B, all atoms (Å <sup>2</sup> )	33.0	wwPDB-VP

Xtriage's analysis on translational NCS is as follows: *The largest off-origin peak in the Patterson function is 3.32% of the height of the origin peak. No significant pseudotranslation is detected.*

<sup>1</sup>Intensities estimated from amplitudes.

<sup>2</sup>Theoretical values of  $\langle |L| \rangle$ ,  $\langle L^2 \rangle$  for acentric reflections are 0.5, 0.333 respectively for untwinned datasets, and 0.375, 0.2 for perfectly twinned datasets.

## 5 Model quality [i](#)

### 5.1 Standard geometry [i](#)

Bond lengths and bond angles in the following residue types are not validated in this section: TPO, NA, F18

The Z score for a bond length (or angle) is the number of standard deviations the observed value is removed from the expected value. A bond length (or angle) with  $|Z| > 5$  is considered an outlier worth inspection. RMSZ is the root-mean-square of all Z scores of the bond lengths (or angles).

Mol	Chain	Bond lengths		Bond angles	
		RMSZ	$\# Z  > 5$	RMSZ	$\# Z  > 5$
1	A	0.40	0/2467	0.55	0/3343
1	C	0.34	0/2415	0.49	0/3274
2	B	0.39	0/2172	0.54	0/2951
2	D	0.35	0/2123	0.48	0/2882
All	All	0.37	0/9177	0.52	0/12450

There are no bond length outliers.

There are no bond angle outliers.

There are no chirality outliers.

There are no planarity outliers.

### 5.2 Too-close contacts [i](#)

In the following table, the Non-H and H(model) columns list the number of non-hydrogen atoms and hydrogen atoms in the chain respectively. The H(added) column lists the number of hydrogen atoms added and optimized by MolProbity. The Clashes column lists the number of clashes within the asymmetric unit, whereas Symm-Clashes lists symmetry related clashes.

Mol	Chain	Non-H	H(model)	H(added)	Clashes	Symm-Clashes
1	A	2408	0	2466	50	0
1	C	2359	0	2414	36	0
2	B	2106	0	2132	27	0
2	D	2069	0	2095	28	0
3	A	16	0	10	0	0
3	C	16	0	9	0	0
4	D	2	0	0	0	0
5	A	314	0	0	12	1
5	B	262	0	0	3	0

*Continued on next page...*



*Continued from previous page...*

Mol	Chain	Non-H	H(model)	H(added)	Clashes	Symm-Clashes
5	C	182	0	0	6	0
5	D	154	0	0	2	0
All	All	9888	0	9126	132	1

The all-atom clashscore is defined as the number of clashes found per 1000 atoms (including hydrogen atoms). The all-atom clashscore for this structure is 7.

All (132) close contacts within the same asymmetric unit are listed below, sorted by their clash magnitude.

Atom-1	Atom-2	Interatomic distance (Å)	Clash overlap (Å)
1:C:217:ARG:NH1	5:C:445:HOH:O	2.07	0.87
1:A:210:ASP:OD1	5:A:869:HOH:O	1.96	0.83
1:C:252:VAL:HG11	1:C:255:LEU:HD22	1.66	0.77
1:C:251:VAL:HG12	1:C:252:VAL:HG23	1.67	0.77
1:A:71:HIS:HD2	1:A:76:LEU:HD11	1.48	0.76
1:C:28:GLU:OE2	5:C:635:HOH:O	2.07	0.73
1:C:34:LYS:HE3	1:C:75:LYS:HD3	1.74	0.70
1:A:52:ILE:HD11	1:A:78:LEU:HD21	1.73	0.69
1:A:42:GLU:OE2	5:A:354:HOH:O	2.13	0.67
1:A:14:THR:HG23	1:A:15:TYR:CD2	2.29	0.66
1:A:161[B]:HIS:O	5:A:438:HOH:O	2.13	0.65
1:A:177:CYS:SG	1:A:233:MET:HE3	2.36	0.65
2:D:346:PRO:HB2	2:D:349:LYS:HE2	1.77	0.65
1:A:199:ARG:HB2	1:A:199:ARG:CZ	2.26	0.65
2:D:327:CYS:HB3	2:D:419:HIS:CE1	2.32	0.64
1:C:126:ARG:NH2	1:C:150:ARG:HG3	2.14	0.62
1:C:161:HIS:HD2	5:C:517:HOH:O	1.82	0.62
1:A:175:LEU:HB2	1:A:233:MET:CE	2.31	0.61
2:B:346:PRO:O	2:B:349:LYS:HG2	2.00	0.61
1:A:91:MET:HG2	1:A:99:ILE:HD11	1.82	0.61
1:A:273:LYS:HG3	5:A:778:HOH:O	2.01	0.60
2:B:415:ASN:ND2	5:B:611:HOH:O	2.26	0.60
1:A:297:ARG:O	1:A:298:LEU:HB2	2.03	0.59
1:A:177:CYS:SG	1:A:233:MET:CE	2.90	0.59
1:A:71:HIS:HD2	1:A:76:LEU:CD1	2.16	0.58
1:A:175:LEU:CB	1:A:233:MET:HE2	2.34	0.58
2:D:346:PRO:O	2:D:349:LYS:HG2	2.03	0.58
1:A:268:HIS:CD2	1:A:273:LYS:HB2	2.38	0.57
1:A:71:HIS:CE1	2:B:296:HIS:CD2	2.93	0.57
1:A:11:GLY:O	1:A:17:VAL:HG23	2.04	0.56
1:C:283:HIS:CG	1:C:284:PRO:HD2	2.40	0.56

*Continued on next page...*

*Continued from previous page...*

Atom-1	Atom-2	Interatomic distance (Å)	Clash overlap (Å)
2:B:198:GLY:O	2:B:201:LYS:HG2	2.06	0.56
1:A:56:LYS:NZ	5:A:861:HOH:O	2.41	0.55
1:C:150:ARG:HD2	1:C:160:TPO:O2P	2.07	0.55
1:A:16:GLY:HA3	1:A:34:LYS:O	2.07	0.54
2:D:233:HIS:NE2	2:D:312[A]:ASN:OD1	2.40	0.54
1:C:252:VAL:HG12	1:C:255:LEU:HB2	1.90	0.54
2:D:364:LEU:HG	2:D:370:GLN:HG3	1.90	0.53
1:A:246:GLN:HG3	5:A:657:HOH:O	2.08	0.53
1:A:49:ILE:HG23	2:B:306:LEU:HD12	1.90	0.53
1:C:177:CYS:SG	5:C:339:HOH:O	2.59	0.53
1:A:71:HIS:CD2	1:A:76:LEU:HD11	2.38	0.52
1:A:122:ARG:HA	1:A:152:PHE:CE2	2.45	0.52
1:A:71:HIS:CE1	2:B:296:HIS:CE1	2.97	0.52
1:C:57:GLU:OE2	2:D:307:ALA:HB3	2.09	0.52
2:B:177:ASP:OD2	5:B:441:HOH:O	2.19	0.52
2:D:387:LEU:O	2:D:391:LEU:HD13	2.10	0.51
1:A:175:LEU:HB3	1:A:233:MET:HE2	1.93	0.51
1:A:237[A]:LYS:HD2	5:A:555:HOH:O	2.09	0.51
1:A:71:HIS:CE1	2:B:296:HIS:NE2	2.79	0.51
1:A:71:HIS:CD2	1:A:76:LEU:CD1	2.94	0.50
2:D:358:ALA:HA	2:D:391:LEU:HD11	1.93	0.50
2:B:395:HIS:HB2	2:B:430:LEU:HD11	1.95	0.49
2:D:398:TYR:CE1	2:D:426:PRO:HG3	2.47	0.49
1:C:248:PHE:HB3	1:C:260:ARG:HD2	1.95	0.49
1:A:175:LEU:CB	1:A:233:MET:CE	2.90	0.49
2:B:289:LYS:O	2:B:293:ARG:HG3	2.13	0.48
2:D:368:THR:OG1	2:D:370:GLN:HG2	2.12	0.48
2:D:401:ALA:HB3	2:D:402:PRO:HD3	1.96	0.48
1:A:34:LYS:HE3	1:A:75:LYS:HD3	1.95	0.48
1:A:297:ARG:O	1:A:298:LEU:CB	2.62	0.48
1:C:197:VAL:HG11	1:C:252:VAL:HG13	1.95	0.48
2:D:189:MET:HE2	2:D:192:LYS:HD2	1.96	0.48
1:A:95:ALA:C	1:A:97:THR:H	2.16	0.47
1:A:291:LYS:NZ	5:A:463:HOH:O	2.48	0.47
1:C:88:LYS:HA	1:C:91:MET:HE2	1.96	0.47
2:D:379:LYS:NZ	5:D:550:HOH:O	2.46	0.47
2:D:345:ASP:HA	2:D:346:PRO:HA	1.74	0.47
1:C:12:GLU:HG2	1:C:13:GLY:N	2.29	0.47
1:A:273:LYS:O	5:A:454:HOH:O	2.20	0.46
2:B:180:GLU:OE1	5:B:548:HOH:O	2.20	0.46
1:A:34:LYS:HE2	1:A:36:ARG:HE	1.80	0.46

*Continued on next page...*

*Continued from previous page...*

Atom-1	Atom-2	Interatomic distance (Å)	Clash overlap (Å)
2:D:367:VAL:HG12	2:D:368:THR:HG23	1.97	0.46
1:C:197:VAL:HG11	1:C:252:VAL:CG1	2.46	0.46
2:D:262:LEU:HD11	2:D:266:LYS:HE3	1.97	0.46
1:C:252:VAL:CG1	1:C:255:LEU:HD22	2.40	0.46
1:A:161[B]:HIS:CD2	1:A:162:GLU:CD	2.89	0.46
2:D:358:ALA:HA	2:D:391:LEU:CD1	2.46	0.46
2:B:323:GLN:HA	2:B:324:PRO:HA	1.69	0.46
1:A:20:LYS:HE3	1:A:29:VAL:HG11	1.99	0.45
1:A:223:ASP:H	1:A:226:VAL:HG22	1.80	0.45
1:A:237[B]:LYS:NZ	5:A:426:HOH:O	2.48	0.45
1:C:38:ASP:HB3	1:C:41:THR:OG1	2.17	0.45
1:A:95:ALA:O	1:A:97:THR:N	2.50	0.44
1:A:298:LEU:HB3	5:A:640:HOH:O	2.16	0.44
2:B:189:MET:HE1	2:B:192:LYS:HD2	2.00	0.44
1:A:64:VAL:O	1:A:64:VAL:HG13	2.18	0.44
1:C:268:HIS:CE1	1:C:273:LYS:HB2	2.52	0.44
1:A:71:HIS:NE2	2:B:296:HIS:CE1	2.86	0.44
2:B:347:TYR:OH	2:B:394:LEU:HA	2.18	0.44
2:D:293:ARG:NE	5:D:823:HOH:O	2.32	0.43
1:A:189:LEU:HA	1:A:189:LEU:HD23	1.89	0.43
2:B:214:LEU:HD22	2:B:253:LEU:HG	2.01	0.43
2:D:181:ASP:N	2:D:181:ASP:OD1	2.51	0.43
1:A:148:LEU:HB3	5:A:549:HOH:O	2.18	0.43
1:A:2:GLU:HG2	2:D:293:ARG:NH2	2.34	0.43
2:D:384:LEU:HA	2:D:384:LEU:HD23	1.89	0.43
1:C:126:ARG:CZ	1:C:150:ARG:HG3	2.49	0.43
1:C:81:GLU:O	1:C:81:GLU:HG3	2.19	0.43
2:D:189:MET:CE	2:D:192:LYS:HD2	2.48	0.43
2:D:248:VAL:HG12	2:D:249:LEU:O	2.18	0.43
2:B:176:PRO:HA	2:B:179:HIS:CG	2.54	0.42
1:C:101:LEU:N	1:C:102:PRO:CD	2.82	0.42
2:B:284:ASP:CG	2:B:284:ASP:O	2.58	0.42
2:B:225:TYR:HE1	2:B:277[A]:GLU:OE2	2.03	0.42
1:C:49:ILE:HG23	2:D:306:LEU:HD12	2.01	0.42
1:A:76:LEU:HD12	1:A:76:LEU:HA	1.88	0.42
1:C:1:MET:SD	1:C:70:ILE:HD12	2.60	0.42
2:B:199:TYR:C	2:B:199:TYR:CD1	2.92	0.42
1:C:55:LEU:HD13	1:C:80:PHE:HE1	1.84	0.42
2:D:189:MET:HE2	2:D:189:MET:HA	2.01	0.41
1:C:255:LEU:HD12	1:C:255:LEU:HA	1.93	0.41
1:A:60:HIS:CG	1:A:61:PRO:HD2	2.56	0.41

*Continued on next page...*

Continued from previous page...

Atom-1	Atom-2	Interatomic distance (Å)	Clash overlap (Å)
2:B:215:VAL:HG12	2:B:342:ILE:HD13	2.01	0.41
2:D:348:LEU:HD23	2:D:348:LEU:HA	1.82	0.41
2:B:417:LYS:HE3	2:B:418:TYR:OH	2.21	0.41
1:C:242:LYS:HE3	5:C:879:HOH:O	2.20	0.41
1:C:283:HIS:HA	1:C:284:PRO:HD3	1.97	0.41
2:B:229:ASN:HB3	2:B:312[A]:ASN:HD21	1.85	0.41
2:B:357:ALA:HB3	2:B:387:LEU:CD2	2.51	0.41
1:C:212:LEU:HD22	1:C:216:PHE:CZ	2.55	0.41
1:C:92:ASP:OD2	5:C:538:HOH:O	2.22	0.41
2:B:330:GLU:O	2:B:334[A]:MET:HG3	2.20	0.40
1:C:86:ASP:OD1	1:C:88:LYS:HB3	2.21	0.40
1:C:186:ILE:HA	1:C:186:ILE:HD13	1.98	0.40
2:D:275:VAL:HG21	2:D:292:LEU:HD21	2.04	0.40
2:B:293:ARG:HH22	1:C:2:GLU:HG2	1.86	0.40
1:C:60:HIS:HA	1:C:61:PRO:HD3	1.98	0.40
1:A:59[B]:ASN:OD1	1:A:65:LYS:HE3	2.22	0.40
2:B:388:LYS:HB3	2:B:389:PRO:HD3	2.03	0.40
1:C:233:MET:HA	1:C:234:PRO:HD3	1.94	0.40
2:D:387:LEU:HB3	2:D:391:LEU:HD13	2.04	0.40

All (1) symmetry-related close contacts are listed below. The label for Atom-2 includes the symmetry operator and encoded unit-cell translations to be applied.

Atom-1	Atom-2	Interatomic distance (Å)	Clash overlap (Å)
5:A:764:HOH:O	5:A:768:HOH:O[4_445]	2.16	0.04

## 5.3 Torsion angles [i](#)

### 5.3.1 Protein backbone [i](#)

In the following table, the Percentiles column shows the percent Ramachandran outliers of the chain as a percentile score with respect to all X-ray entries followed by that with respect to entries of similar resolution.

The Analysed column shows the number of residues for which the backbone conformation was analysed, and the total number of residues.

Mol	Chain	Analysed	Favoured	Allowed	Outliers	Percentiles
1	A	295/300 (98%)	285 (97%)	8 (3%)	2 (1%)	<b>22</b> <b>16</b>

Continued on next page...

*Continued from previous page...*

Mol	Chain	Analysed	Favoured	Allowed	Outliers	Percentiles	
1	C	290/300 (97%)	282 (97%)	6 (2%)	2 (1%)	22	16
2	B	260/262 (99%)	259 (100%)	1 (0%)	0	100	100
2	D	253/262 (97%)	250 (99%)	1 (0%)	2 (1%)	19	13
All	All	1098/1124 (98%)	1076 (98%)	16 (2%)	6 (0%)	25	23

All (6) Ramachandran outliers are listed below:

Mol	Chain	Res	Type
1	C	164	VAL
1	A	164	VAL
1	A	145	ASP
2	D	420	GLY
1	C	145	ASP
2	D	372	TRP

### 5.3.2 Protein sidechains ⓘ

In the following table, the Percentiles column shows the percent sidechain outliers of the chain as a percentile score with respect to all X-ray entries followed by that with respect to entries of similar resolution.

The Analysed column shows the number of residues for which the sidechain conformation was analysed, and the total number of residues.

Mol	Chain	Analysed	Rotameric	Outliers	Percentiles	
1	A	264/263 (100%)	260 (98%)	4 (2%)	65	69
1	C	259/263 (98%)	255 (98%)	4 (2%)	65	69
2	B	235/235 (100%)	235 (100%)	0	100	100
2	D	230/235 (98%)	228 (99%)	2 (1%)	78	83
All	All	988/996 (99%)	978 (99%)	10 (1%)	76	81

All (10) residues with a non-rotameric sidechain are listed below:

Mol	Chain	Res	Type
1	A	122	ARG
1	A	199	ARG
1	A	255	LEU
1	A	272	ASN
1	C	122	ARG

*Continued on next page...*

*Continued from previous page...*

Mol	Chain	Res	Type
1	C	138	GLU
1	C	150	ARG
1	C	255	LEU
2	D	181	ASP
2	D	201	LYS

Some sidechains can be flipped to improve hydrogen bonding and reduce clashes. All (2) such sidechains are listed below:

Mol	Chain	Res	Type
1	A	71	HIS
2	B	296	HIS

### 5.3.3 RNA ⓘ

There are no RNA molecules in this entry.

## 5.4 Non-standard residues in protein, DNA, RNA chains ⓘ

2 non-standard protein/DNA/RNA residues are modelled in this entry.

In the following table, the Counts columns list the number of bonds (or angles) for which Mogul statistics could be retrieved, the number of bonds (or angles) that are observed in the model and the number of bonds (or angles) that are defined in the Chemical Component Dictionary. The Link column lists molecule types, if any, to which the group is linked. The Z score for a bond length (or angle) is the number of standard deviations the observed value is removed from the expected value. A bond length (or angle) with  $|Z| > 2$  is considered an outlier worth inspection. RMSZ is the root-mean-square of all Z scores of the bond lengths (or angles).

Mol	Type	Chain	Res	Link	Bond lengths			Bond angles		
					Counts	RMSZ	$\# Z  > 2$	Counts	RMSZ	$\# Z  > 2$
1	TPO	A	160	1	8,10,11	0.97	0	10,14,16	1.40	2 (20%)
1	TPO	C	160	1	8,10,11	1.17	0	10,14,16	1.56	2 (20%)

In the following table, the Chirals column lists the number of chiral outliers, the number of chiral centers analysed, the number of these observed in the model and the number defined in the Chemical Component Dictionary. Similar counts are reported in the Torsion and Rings columns. '-' means no outliers of that kind were identified.

Mol	Type	Chain	Res	Link	Chirals	Torsions	Rings
1	TPO	A	160	1	-	0/9/11/13	-

*Continued on next page...*

*Continued from previous page...*

Mol	Type	Chain	Res	Link	Chirals	Torsions	Rings
1	TPO	C	160	1	-	0/9/11/13	-

There are no bond length outliers.

All (4) bond angle outliers are listed below:

Mol	Chain	Res	Type	Atoms	Z	Observed(°)	Ideal(°)
1	C	160	TPO	P-OG1-CB	-3.91	111.38	123.21
1	A	160	TPO	P-OG1-CB	-3.23	113.45	123.21
1	C	160	TPO	CG2-CB-CA	-2.10	109.01	113.16
1	A	160	TPO	CG2-CB-CA	-2.05	109.11	113.16

There are no chirality outliers.

There are no torsion outliers.

There are no ring outliers.

1 monomer is involved in 1 short contact:

Mol	Chain	Res	Type	Clashes	Symm-Clashes
1	C	160	TPO	1	0

## 5.5 Carbohydrates [i](#)

There are no carbohydrates in this entry.

## 5.6 Ligand geometry [i](#)

Of 4 ligands modelled in this entry, 2 are monoatomic - leaving 2 for Mogul analysis.

In the following table, the Counts columns list the number of bonds (or angles) for which Mogul statistics could be retrieved, the number of bonds (or angles) that are observed in the model and the number of bonds (or angles) that are defined in the Chemical Component Dictionary. The Link column lists molecule types, if any, to which the group is linked. The Z score for a bond length (or angle) is the number of standard deviations the observed value is removed from the expected value. A bond length (or angle) with  $|Z| > 2$  is considered an outlier worth inspection. RMSZ is the root-mean-square of all Z scores of the bond lengths (or angles).

Mol	Type	Chain	Res	Link	Bond lengths			Bond angles		
					Counts	RMSZ	# Z  > 2	Counts	RMSZ	# Z  > 2
3	F18	A	299	-	15,17,17	1.16	2 (13%)	12,23,23	0.62	0
3	F18	C	299	-	15,17,17	1.25	1 (6%)	12,23,23	0.64	0

In the following table, the Chirals column lists the number of chiral outliers, the number of chiral centers analysed, the number of these observed in the model and the number defined in the Chemical Component Dictionary. Similar counts are reported in the Torsion and Rings columns. '-' means no outliers of that kind were identified.

Mol	Type	Chain	Res	Link	Chirals	Torsions	Rings
3	F18	A	299	-	-	0/3/5/5	0/2/2/2
3	F18	C	299	-	-	0/3/5/5	0/2/2/2

All (3) bond length outliers are listed below:

Mol	Chain	Res	Type	Atoms	Z	Observed(Å)	Ideal(Å)
3	C	299	F18	C15-N18	2.41	1.40	1.34
3	A	299	F18	C14-C15	2.05	1.42	1.39
3	A	299	F18	C15-N18	2.04	1.39	1.34

There are no bond angle outliers.

There are no chirality outliers.

There are no torsion outliers.

There are no ring outliers.

No monomer is involved in short contacts.

## 5.7 Other polymers [i](#)

There are no such residues in this entry.

## 5.8 Polymer linkage issues [i](#)

There are no chain breaks in this entry.



## 6 Fit of model and data ⓘ

### 6.1 Protein, DNA and RNA chains ⓘ

In the following table, the column labelled ‘#RSRZ> 2’ contains the number (and percentage) of RSRZ outliers, followed by percent RSRZ outliers for the chain as percentile scores relative to all X-ray entries and entries of similar resolution. The OWAB column contains the minimum, median, 95<sup>th</sup> percentile and maximum values of the occupancy-weighted average B-factor per residue. The column labelled ‘Q< 0.9’ lists the number of (and percentage) of residues with an average occupancy less than 0.9.

Mol	Chain	Analysed	<RSRZ>	#RSRZ>2			OWAB(Å <sup>2</sup> )	Q<0.9
1	A	295/300 (98%)	-0.07	9 (3%)	49	48	14, 23, 59, 81	0
1	C	291/300 (97%)	-0.05	12 (4%)	37	36	22, 35, 54, 72	0
2	B	257/262 (98%)	-0.01	4 (1%)	72	70	15, 25, 46, 72	0
2	D	255/262 (97%)	0.09	15 (5%)	22	21	20, 37, 62, 82	0
All	All	1098/1124 (97%)	-0.01	40 (3%)	42	42	14, 30, 58, 82	0

All (40) RSRZ outliers are listed below:

Mol	Chain	Res	Type	RSRZ
1	A	96	LEU	8.1
2	B	284	ASP	5.5
1	C	282	ALA	4.3
1	A	298	LEU	4.2
1	C	287	GLN	4.0
1	A	0	SER	3.7
2	D	432	VAL	3.4
2	D	325	ALA	3.1
1	A	15	TYR	3.1
1	A	95	ALA	3.0
2	B	283	ASP	3.0
1	C	284	PRO	3.0
1	C	289	VAL	2.8
1	A	36	ARG	2.8
2	D	420	GLY	2.7
2	D	367	VAL	2.7
1	A	73	GLU	2.7
1	A	297	ARG	2.7
1	C	249	SER	2.6
2	B	280	TYR	2.6
1	C	288	ASP	2.5

*Continued on next page...*

*Continued from previous page...*

Mol	Chain	Res	Type	RSRZ
2	D	328	LYS	2.5
2	D	362	LEU	2.5
1	C	247	ASP	2.5
2	D	357	ALA	2.4
2	D	415	ASN	2.4
1	C	286	PHE	2.4
2	D	391	LEU	2.4
2	D	431	ASN	2.4
2	D	428	GLU	2.3
1	C	256	ASP	2.3
1	C	101	LEU	2.2
2	D	326	ASN	2.2
1	C	232	SER	2.2
2	D	395	HIS	2.2
2	D	423	LEU	2.1
2	D	430	LEU	2.1
1	A	14	THR	2.1
2	B	176	PRO	2.1
1	C	290	THR	2.1

## 6.2 Non-standard residues in protein, DNA, RNA chains [i](#)

In the following table, the Atoms column lists the number of modelled atoms in the group and the number defined in the chemical component dictionary. The B-factors column lists the minimum, median, 95<sup>th</sup> percentile and maximum values of B factors of atoms in the group. The column labelled 'Q< 0.9' lists the number of atoms with occupancy less than 0.9.

Mol	Type	Chain	Res	Atoms	RSCC	RSR	B-factors(Å <sup>2</sup> )	Q<0.9
1	TPO	C	160	11/12	0.97	0.09	27,32,34,35	0
1	TPO	A	160	11/12	0.99	0.08	18,19,24,25	0

## 6.3 Carbohydrates [i](#)

There are no carbohydrates in this entry.

## 6.4 Ligands [i](#)

In the following table, the Atoms column lists the number of modelled atoms in the group and the number defined in the chemical component dictionary. The B-factors column lists the minimum, median, 95<sup>th</sup> percentile and maximum values of B factors of atoms in the group. The column labelled 'Q< 0.9' lists the number of atoms with occupancy less than 0.9.

Mol	Type	Chain	Res	Atoms	RSCC	RSR	B-factors( $\text{\AA}^2$ )	Q<0.9
4	NA	D	1	1/1	0.92	0.31	40,40,40,40	0
3	F18	A	299	16/16	0.96	0.09	21,32,38,41	0
3	F18	C	299	16/16	0.96	0.09	27,31,36,40	0
4	NA	D	4	1/1	0.97	0.13	35,35,35,35	0

## 6.5 Other polymers [i](#)

There are no such residues in this entry.