



# Full wwPDB X-ray Structure Validation Report ⓘ

May 14, 2020 – 06:00 am BST

PDB ID : 3TNZ  
Title : Crystal structure of Mus musculus iodotyrosine deiodinase (IYD) C217A, C239A bound to FMN and mono-iodotyrosine (MIT)  
Authors : Buss, J.M.; McTamney, P.M.; Rokita, S.E.  
Deposited on : 2011-09-02  
Resolution : 2.25 Å(reported)

This is a Full wwPDB X-ray Structure Validation Report for a publicly released PDB entry.

We welcome your comments at [validation@mail.wwpdb.org](mailto:validation@mail.wwpdb.org)

A user guide is available at

<https://www.wwpdb.org/validation/2017/XrayValidationReportHelp>

with specific help available everywhere you see the ⓘ symbol.

---

The following versions of software and data (see [references ⓘ](#)) were used in the production of this report:

MolProbity : 4.02b-467  
Mogul : 1.8.5 (274361), CSD as541be (2020)  
Xtriage (Phenix) : 1.13  
EDS : 2.11  
buster-report : 1.1.7 (2018)  
Percentile statistics : 20191225.v01 (using entries in the PDB archive December 25th 2019)  
Refmac : 5.8.0158  
CCP4 : 7.0.044 (Gargrove)  
Ideal geometry (proteins) : Engh & Huber (2001)  
Ideal geometry (DNA, RNA) : Parkinson et al. (1996)  
Validation Pipeline (wwPDB-VP) : 2.11

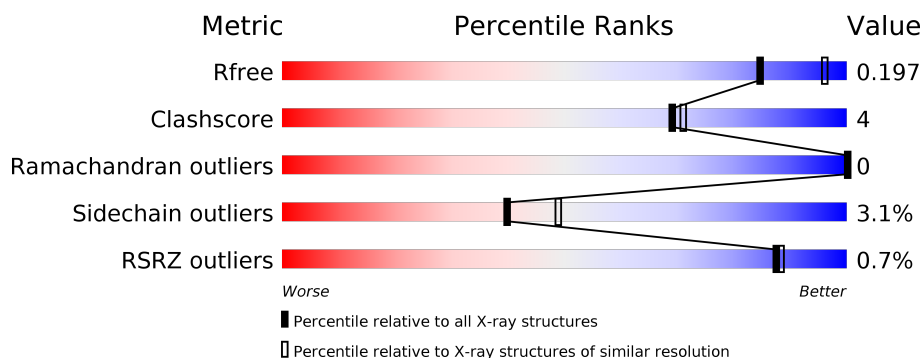
# 1 Overall quality at a glance

The following experimental techniques were used to determine the structure:

## *X-RAY DIFFRACTION*

The reported resolution of this entry is 2.25 Å.

Percentile scores (ranging between 0-100) for global validation metrics of the entry are shown in the following graphic. The table shows the number of entries on which the scores are based.



Metric	Whole archive (#Entries)	Similar resolution (#Entries, resolution range(Å))
$R_{free}$	130704	1377 (2.26-2.26)
Clashscore	141614	1487 (2.26-2.26)
Ramachandran outliers	138981	1449 (2.26-2.26)
Sidechain outliers	138945	1450 (2.26-2.26)
RSRZ outliers	127900	1356 (2.26-2.26)

The table below summarises the geometric issues observed across the polymeric chains and their fit to the electron density. The red, orange, yellow and green segments on the lower bar indicate the fraction of residues that contain outliers for  $\geq 3$ , 2, 1 and 0 types of geometric quality criteria respectively. A grey segment represents the fraction of residues that are not modelled. The numeric value for each fraction is indicated below the corresponding segment, with a dot representing fractions  $\leq 5\%$ . The upper red bar (where present) indicates the fraction of residues that have poor fit to the electron density. The numeric value is given above the bar.

Mol	Chain	Length	Quality of chain
1	A	259	<div> <div style="width: 100%; height: 10px; position: relative;"> <div style="position: absolute; top: -10px; left: 0; width: 100%;"></div> <div style="position: absolute; top: 0; left: 0; width: 100%; height: 10px;"> <div style="width: 1%; height: 10px; background-color: red;"></div> <div style="width: 76%; height: 10px; background-color: green;"></div> <div style="width: 9%; height: 10px; background-color: yellow;"></div> <div style="width: 14%; height: 10px; background-color: grey;"></div> </div> </div> <div>76% 9% 14%</div> </div>
1	B	259	<div> <div style="width: 100%; height: 10px; position: relative;"> <div style="position: absolute; top: 0; left: 0; width: 100%; height: 10px;"> <div style="width: 78%; height: 10px; background-color: green;"></div> <div style="width: 7%; height: 10px; background-color: yellow;"></div> <div style="width: 15%; height: 10px; background-color: grey;"></div> </div> </div> <div>78% 7% 15%</div> </div>

## 2 Entry composition

There are 6 unique types of molecules in this entry. The entry contains 4006 atoms, of which 0 are hydrogens and 0 are deuteriums.

In the tables below, the ZeroOcc column contains the number of atoms modelled with zero occupancy, the AltConf column contains the number of residues with at least one atom in alternate conformation and the Trace column contains the number of residues modelled with at most 2 atoms.

- Molecule 1 is a protein called Iodotyrosine dehalogenase 1.

Mol	Chain	Residues	Atoms					ZeroOcc	AltConf	Trace
1	A	222	Total	C	N	O	S	0	1	0
			1799	1153	323	316	7			
1	B	221	Total	C	N	O	S	0	0	0
			1781	1142	317	315	7			

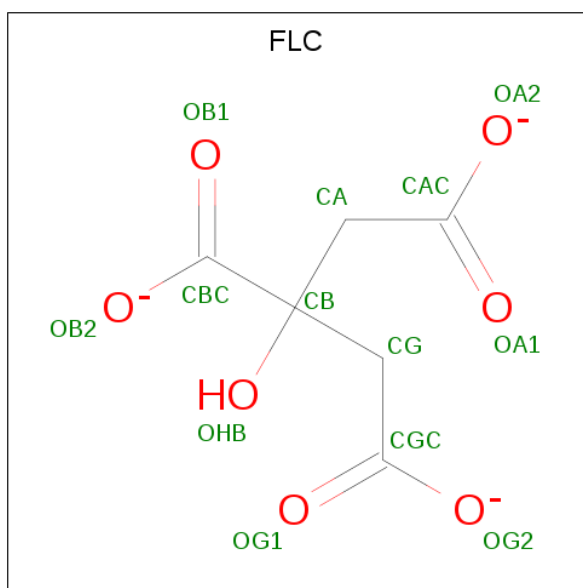
There are 18 discrepancies between the modelled and reference sequences:

Chain	Residue	Modelled	Actual	Comment	Reference
A	33	MET	-	INITIATING METHIONINE	UNP Q9DCX8
A	217	ALA	CYS	ENGINEERED MUTATION	UNP Q9DCX8
A	239	ALA	CYS	ENGINEERED MUTATION	UNP Q9DCX8
A	286	HIS	-	EXPRESSION TAG	UNP Q9DCX8
A	287	HIS	-	EXPRESSION TAG	UNP Q9DCX8
A	288	HIS	-	EXPRESSION TAG	UNP Q9DCX8
A	289	HIS	-	EXPRESSION TAG	UNP Q9DCX8
A	290	HIS	-	EXPRESSION TAG	UNP Q9DCX8
A	291	HIS	-	EXPRESSION TAG	UNP Q9DCX8
B	33	MET	-	INITIATING METHIONINE	UNP Q9DCX8
B	217	ALA	CYS	ENGINEERED MUTATION	UNP Q9DCX8
B	239	ALA	CYS	ENGINEERED MUTATION	UNP Q9DCX8
B	286	HIS	-	EXPRESSION TAG	UNP Q9DCX8
B	287	HIS	-	EXPRESSION TAG	UNP Q9DCX8
B	288	HIS	-	EXPRESSION TAG	UNP Q9DCX8
B	289	HIS	-	EXPRESSION TAG	UNP Q9DCX8
B	290	HIS	-	EXPRESSION TAG	UNP Q9DCX8
B	291	HIS	-	EXPRESSION TAG	UNP Q9DCX8

- Molecule 2 is FLAVIN MONONUCLEOTIDE (three-letter code: FMN) (formula: C<sub>17</sub>H<sub>21</sub>N<sub>4</sub>O<sub>9</sub>P).



- Molecule 4 is CITRATE ANION (three-letter code: FLC) (formula:  $C_6H_5O_7$ ).



Mol	Chain	Residues	Atoms			ZeroOcc	AltConf
4	A	1	Total	C	O	0	0
			13	6	7		
4	B	1	Total	C	O	0	0
			13	6	7		

- Molecule 5 is GLYCEROL (three-letter code: GOL) (formula:  $C_3H_8O_3$ ).



Mol	Chain	Residues	Atoms			ZeroOcc	AltConf
5	A	1	Total	C	O	0	0
			6	3	3		

*Continued on next page...*

*Continued from previous page...*

Mol	Chain	Residues	Atoms			ZeroOcc	AltConf
5	B	1	Total	C	O	0	0
			6	3	3		

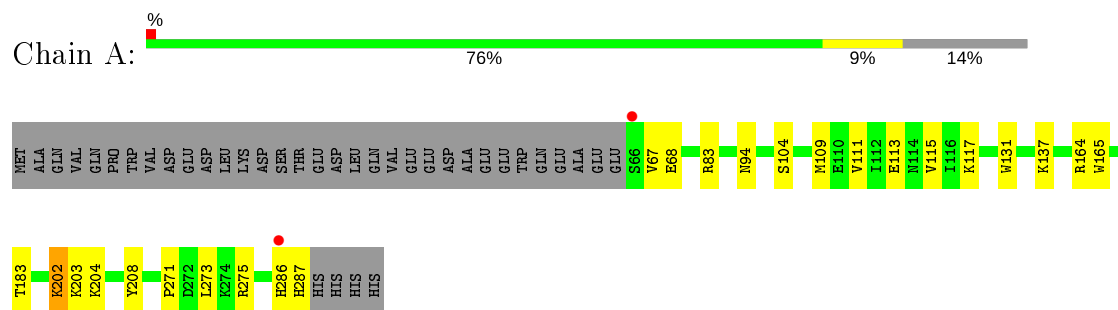
- Molecule 6 is water.

Mol	Chain	Residues	Atoms		ZeroOcc	AltConf
6	A	145	Total	O	0	0
			145	145		
6	B	153	Total	O	0	0
			153	153		

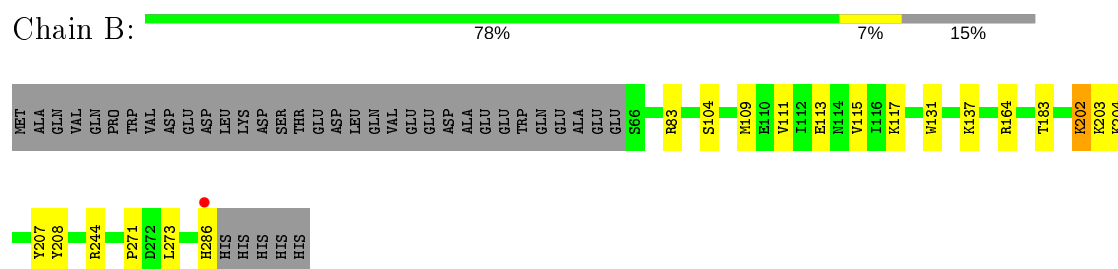
### 3 Residue-property plots [i](#)

These plots are drawn for all protein, RNA and DNA chains in the entry. The first graphic for a chain summarises the proportions of the various outlier classes displayed in the second graphic. The second graphic shows the sequence view annotated by issues in geometry and electron density. Residues are color-coded according to the number of geometric quality criteria for which they contain at least one outlier: green = 0, yellow = 1, orange = 2 and red = 3 or more. A red dot above a residue indicates a poor fit to the electron density ( $RSRZ > 2$ ). Stretches of 2 or more consecutive residues without any outlier are shown as a green connector. Residues present in the sample, but not in the model, are shown in grey.

- Molecule 1: Iodotyrosine dehalogenase 1



- Molecule 1: Iodotyrosine dehalogenase 1



## 4 Data and refinement statistics

Property	Value	Source
Space group	P 3	Depositor
Cell constants a, b, c, $\alpha$ , $\beta$ , $\gamma$	108.99 Å   108.99 Å   49.40 Å 90.00°   90.00°   120.00°	Depositor
Resolution (Å)	26.54 – 2.25 26.54 – 2.25	Depositor EDS
% Data completeness (in resolution range)	99.6 (26.54-2.25) 99.6 (26.54-2.25)	Depositor EDS
$R_{merge}$	(Not available)	Depositor
$R_{sym}$	0.15	Depositor
$\langle I/\sigma(I) \rangle$ <sup>1</sup>	1.24 (at 2.24 Å)	Xtriage
Refinement program	PHENIX (phenix.refine: 1.7.1_743)	Depositor
R, $R_{free}$	0.171 , 0.200 0.168 , 0.197	Depositor DCC
$R_{free}$ test set	1568 reflections (5.04%)	wwPDB-VP
Wilson B-factor (Å <sup>2</sup> )	24.4	Xtriage
Anisotropy	0.021	Xtriage
Bulk solvent $k_{sol}$ (e/Å <sup>3</sup> ), $B_{sol}$ (Å <sup>2</sup> )	0.34 , 24.1	EDS
L-test for twinning <sup>2</sup>	$\langle  L  \rangle = 0.50$ , $\langle L^2 \rangle = 0.33$	Xtriage
Estimated twinning fraction	0.024 for -h,-k,l 0.480 for h,-h-k,-l 0.023 for -k,-h,-l	Xtriage
$F_o, F_c$ correlation	0.96	EDS
Total number of atoms	4006	wwPDB-VP
Average B, all atoms (Å <sup>2</sup> )	27.0	wwPDB-VP

Xtriage's analysis on translational NCS is as follows: *The largest off-origin peak in the Patterson function is 4.37% of the height of the origin peak. No significant pseudotranslation is detected.*

<sup>1</sup> Intensities estimated from amplitudes.

<sup>2</sup> Theoretical values of  $\langle |L| \rangle$ ,  $\langle L^2 \rangle$  for acentric reflections are 0.5, 0.333 respectively for untwinned datasets, and 0.375, 0.2 for perfectly twinned datasets.



## 5 Model quality

### 5.1 Standard geometry

Bond lengths and bond angles in the following residue types are not validated in this section: FMN, GOL, FLC, IYR

The Z score for a bond length (or angle) is the number of standard deviations the observed value is removed from the expected value. A bond length (or angle) with  $|Z| > 5$  is considered an outlier worth inspection. RMSZ is the root-mean-square of all Z scores of the bond lengths (or angles).

Mol	Chain	Bond lengths		Bond angles	
		RMSZ	# Z  >5	RMSZ	# Z  >5
1	A	0.67	0/1843	0.67	0/2495
1	B	0.65	0/1821	0.67	0/2466
All	All	0.66	0/3664	0.67	0/4961

There are no bond length outliers.

There are no bond angle outliers.

There are no chirality outliers.

There are no planarity outliers.

### 5.2 Too-close contacts

In the following table, the Non-H and H(model) columns list the number of non-hydrogen atoms and hydrogen atoms in the chain respectively. The H(added) column lists the number of hydrogen atoms added and optimized by MolProbity. The Clashes column lists the number of clashes within the asymmetric unit, whereas Symm-Clashes lists symmetry related clashes.

Mol	Chain	Non-H	H(model)	H(added)	Clashes	Symm-Clashes
1	A	1799	0	1859	15	0
1	B	1781	0	1839	12	0
2	A	31	0	19	1	0
2	B	31	0	19	2	0
3	A	14	0	9	0	0
3	B	14	0	9	0	0
4	A	13	0	5	2	0
4	B	13	0	5	2	0
5	A	6	0	8	0	0
5	B	6	0	8	0	0
6	A	145	0	0	0	0

*Continued on next page...*

*Continued from previous page...*

Mol	Chain	Non-H	H(model)	H(added)	Clashes	Symm-Clashes
6	B	153	0	0	0	0
All	All	4006	0	3780	28	0

The all-atom clashscore is defined as the number of clashes found per 1000 atoms (including hydrogen atoms). The all-atom clashscore for this structure is 4.

All (28) close contacts within the same asymmetric unit are listed below, sorted by their clash magnitude.

Atom-1	Atom-2	Interatomic distance (Å)	Clash overlap (Å)
1:B:202:LYS:HE2	1:B:203:LYS:H	1.68	0.59
1:A:208:TYR:HB2	2:B:301:FMN:HM73	1.85	0.59
1:A:202:LYS:HE2	1:A:203:LYS:H	1.68	0.58
1:A:271:PRO:HB2	1:A:273:LEU:HG	1.85	0.58
4:B:303:FLC:OG2	4:B:303:FLC:OB2	2.21	0.58
1:B:271:PRO:HB2	1:B:273:LEU:HG	1.87	0.56
1:B:109:MET:SD	1:B:137:LYS:HD3	2.47	0.54
1:B:104:SER:HA	1:B:183:THR:O	2.10	0.51
1:A:109:MET:SD	1:A:137:LYS:HD3	2.50	0.51
1:A:83:ARG:NH2	4:B:303:FLC:OG2	2.35	0.50
4:A:303:FLC:OG2	1:B:83:ARG:NH2	2.41	0.50
1:A:104:SER:HA	1:A:183:THR:O	2.11	0.50
4:A:303:FLC:OG2	4:A:303:FLC:OB2	2.29	0.49
2:A:301:FMN:HM73	1:B:208:TYR:HB2	1.95	0.48
1:A:202:LYS:HE2	1:A:203:LYS:N	2.29	0.47
1:B:202:LYS:HE2	1:B:203:LYS:N	2.29	0.47
1:A:202:LYS:HE2	1:A:202:LYS:CA	2.45	0.47
1:B:202:LYS:HE2	1:B:202:LYS:CA	2.44	0.47
1:B:113:GLU:O	1:B:117:LYS:HG3	2.17	0.44
1:A:113:GLU:O	1:A:117:LYS:HG3	2.19	0.43
1:B:111:VAL:O	1:B:115:VAL:HG13	2.19	0.43
1:A:208:TYR:CB	2:B:301:FMN:HM73	2.48	0.42
1:A:165:TRP:HA	1:B:207:TYR:OH	2.20	0.41
1:B:202:LYS:CE	1:B:202:LYS:HA	2.49	0.41
1:A:94:ASN:O	1:A:275:ARG:NH1	2.52	0.41
1:A:67:VAL:HG22	1:A:68:GLU:N	2.36	0.41
1:A:111:VAL:O	1:A:115:VAL:HG13	2.21	0.41
1:A:202:LYS:CE	1:A:202:LYS:HA	2.51	0.40

There are no symmetry-related clashes.

## 5.3 Torsion angles

### 5.3.1 Protein backbone

In the following table, the Percentiles column shows the percent Ramachandran outliers of the chain as a percentile score with respect to all X-ray entries followed by that with respect to entries of similar resolution.

The Analysed column shows the number of residues for which the backbone conformation was analysed, and the total number of residues.

Mol	Chain	Analysed	Favoured	Allowed	Outliers	Percentiles	
1	A	221/259 (85%)	214 (97%)	7 (3%)	0	100	100
1	B	219/259 (85%)	214 (98%)	5 (2%)	0	100	100
All	All	440/518 (85%)	428 (97%)	12 (3%)	0	100	100

There are no Ramachandran outliers to report.

### 5.3.2 Protein sidechains

In the following table, the Percentiles column shows the percent sidechain outliers of the chain as a percentile score with respect to all X-ray entries followed by that with respect to entries of similar resolution.

The Analysed column shows the number of residues for which the sidechain conformation was analysed, and the total number of residues.

Mol	Chain	Analysed	Rotameric	Outliers	Percentiles	
1	A	198/231 (86%)	192 (97%)	6 (3%)	41	50
1	B	196/231 (85%)	190 (97%)	6 (3%)	40	49
All	All	394/462 (85%)	382 (97%)	12 (3%)	40	50

All (12) residues with a non-rotameric sidechain are listed below:

Mol	Chain	Res	Type
1	A	131	TRP
1	A	164	ARG
1	A	202	LYS
1	A	204	LYS
1	A	286	HIS
1	A	287	HIS
1	B	131	TRP
1	B	164	ARG

*Continued on next page...*

*Continued from previous page...*

Mol	Chain	Res	Type
1	B	202	LYS
1	B	204	LYS
1	B	244	ARG
1	B	286	HIS

Some sidechains can be flipped to improve hydrogen bonding and reduce clashes. There are no such sidechains identified.

### 5.3.3 RNA ⓘ

There are no RNA molecules in this entry.

## 5.4 Non-standard residues in protein, DNA, RNA chains ⓘ

There are no non-standard protein/DNA/RNA residues in this entry.

## 5.5 Carbohydrates ⓘ

There are no carbohydrates in this entry.

## 5.6 Ligand geometry ⓘ

8 ligands are modelled in this entry.

In the following table, the Counts columns list the number of bonds (or angles) for which Mogul statistics could be retrieved, the number of bonds (or angles) that are observed in the model and the number of bonds (or angles) that are defined in the Chemical Component Dictionary. The Link column lists molecule types, if any, to which the group is linked. The Z score for a bond length (or angle) is the number of standard deviations the observed value is removed from the expected value. A bond length (or angle) with  $|Z| > 2$  is considered an outlier worth inspection. RMSZ is the root-mean-square of all Z scores of the bond lengths (or angles).

Mol	Type	Chain	Res	Link	Bond lengths			Bond angles		
					Counts	RMSZ	$\# Z  > 2$	Counts	RMSZ	$\# Z  > 2$
2	FMN	B	301	-	31,33,33	1.11	2 (6%)	40,50,50	1.82	6 (15%)
5	GOL	A	304	-	5,5,5	0.39	0	5,5,5	0.41	0
3	IYR	B	302	-	11,14,14	0.60	0	14,19,19	1.44	2 (14%)
2	FMN	A	301	-	31,33,33	1.25	3 (9%)	40,50,50	1.87	8 (20%)
3	IYR	A	302	-	11,14,14	0.55	0	14,19,19	1.28	2 (14%)
5	GOL	B	304	-	5,5,5	0.42	0	5,5,5	0.48	0

Mol	Type	Chain	Res	Link	Bond lengths			Bond angles		
					Counts	RMSZ	# Z  > 2	Counts	RMSZ	# Z  > 2
4	FLC	B	303	-	3,12,12	3.57	3 (100%)	3,17,17	1.41	1 (33%)
4	FLC	A	303	-	3,12,12	3.55	3 (100%)	3,17,17	2.29	1 (33%)

In the following table, the Chirals column lists the number of chiral outliers, the number of chiral centers analysed, the number of these observed in the model and the number defined in the Chemical Component Dictionary. Similar counts are reported in the Torsion and Rings columns. '-' means no outliers of that kind were identified.

Mol	Type	Chain	Res	Link	Chirals	Torsions	Rings
2	FMN	B	301	-	-	0/18/18/18	0/3/3/3
5	GOL	A	304	-	-	0/4/4/4	-
3	IYR	B	302	-	-	0/4/8/8	0/1/1/1
2	FMN	A	301	-	-	0/18/18/18	0/3/3/3
3	IYR	A	302	-	-	0/4/8/8	0/1/1/1
5	GOL	B	304	-	-	2/4/4/4	-
4	FLC	B	303	-	-	3/6/16/16	-
4	FLC	A	303	-	-	3/6/16/16	-

All (11) bond length outliers are listed below:

Mol	Chain	Res	Type	Atoms	Z	Observed(Å)	Ideal(Å)
4	A	303	FLC	CG-CB	-4.20	1.49	1.54
4	B	303	FLC	CG-CB	-4.09	1.49	1.54
2	A	301	FMN	C10-N1	3.87	1.38	1.33
4	B	303	FLC	CA-CB	-3.63	1.49	1.54
4	A	303	FLC	CA-CB	-3.51	1.50	1.54
2	B	301	FMN	C10-N1	2.91	1.37	1.33
4	B	303	FLC	OHB-CB	-2.90	1.38	1.43
4	A	303	FLC	OHB-CB	-2.82	1.38	1.43
2	A	301	FMN	C4A-N5	2.54	1.37	1.33
2	A	301	FMN	C6-C5A	-2.23	1.38	1.41
2	B	301	FMN	C1'-N10	2.08	1.50	1.48

All (20) bond angle outliers are listed below:

Mol	Chain	Res	Type	Atoms	Z	Observed(°)	Ideal(°)
2	B	301	FMN	C4-N3-C2	6.80	120.89	115.14
2	A	301	FMN	C4-N3-C2	6.61	120.72	115.14
2	B	301	FMN	C1'-N10-C9A	4.80	122.07	118.29
2	A	301	FMN	C4A-C4-N3	-4.04	117.91	123.43
2	A	301	FMN	C1'-N10-C9A	4.04	121.47	118.29

*Continued on next page...*

*Continued from previous page...*

Mol	Chain	Res	Type	Atoms	Z	Observed(°)	Ideal(°)
4	A	303	FLC	CB-CA-CAC	3.93	121.28	114.98
2	B	301	FMN	C4A-C4-N3	-3.77	118.28	123.43
2	A	301	FMN	C4A-N5-C5A	3.53	120.30	116.77
3	B	302	IYR	OF-CF-CE	3.29	123.17	119.19
2	A	301	FMN	C4-C4A-C10	3.15	122.04	119.95
3	B	302	IYR	CC-CB-CA	3.00	120.45	114.22
3	A	302	IYR	CC-CB-CA	2.91	120.26	114.22
2	B	301	FMN	C4A-N5-C5A	2.52	119.29	116.77
4	B	303	FLC	CB-CA-CAC	2.41	118.84	114.98
2	A	301	FMN	C10-C4A-N5	-2.27	119.69	121.26
2	B	301	FMN	P-O5'-C5'	2.25	124.48	118.30
2	A	301	FMN	C6-C5A-N5	-2.23	116.59	119.05
3	A	302	IYR	CH-CG-CF	-2.04	118.41	120.50
2	A	301	FMN	C6-C5A-C9A	2.03	121.71	119.05
2	B	301	FMN	C9A-N10-C10	-2.02	119.26	121.91

There are no chirality outliers.

All (8) torsion outliers are listed below:

Mol	Chain	Res	Type	Atoms
4	B	303	FLC	CAC-CA-CB-CBC
4	B	303	FLC	CAC-CA-CB-OHB
4	A	303	FLC	CAC-CA-CB-CBC
4	A	303	FLC	CAC-CA-CB-OHB
4	B	303	FLC	CAC-CA-CB-CG
4	A	303	FLC	CAC-CA-CB-CG
5	B	304	GOL	O1-C1-C2-O2
5	B	304	GOL	O1-C1-C2-C3

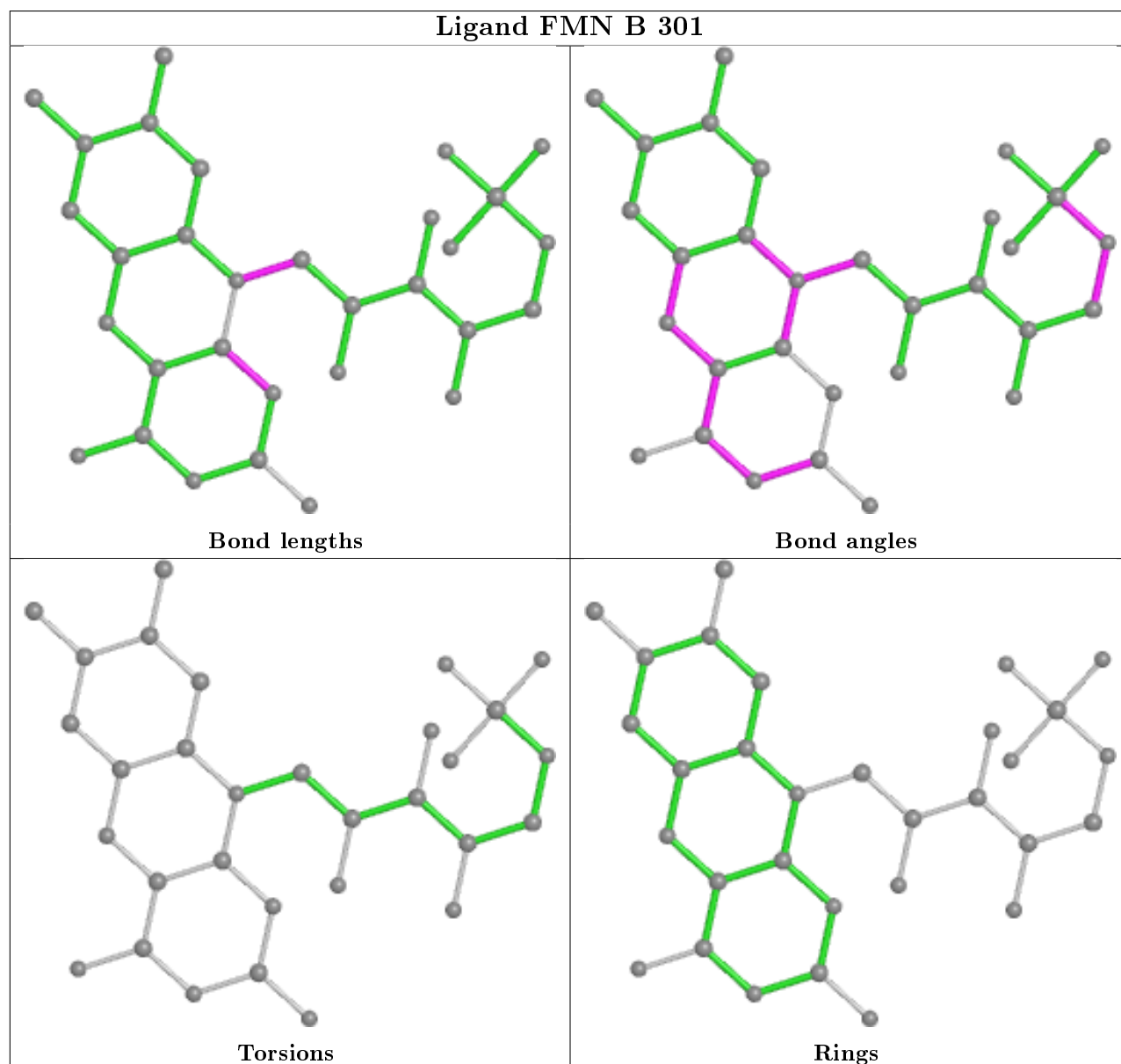
There are no ring outliers.

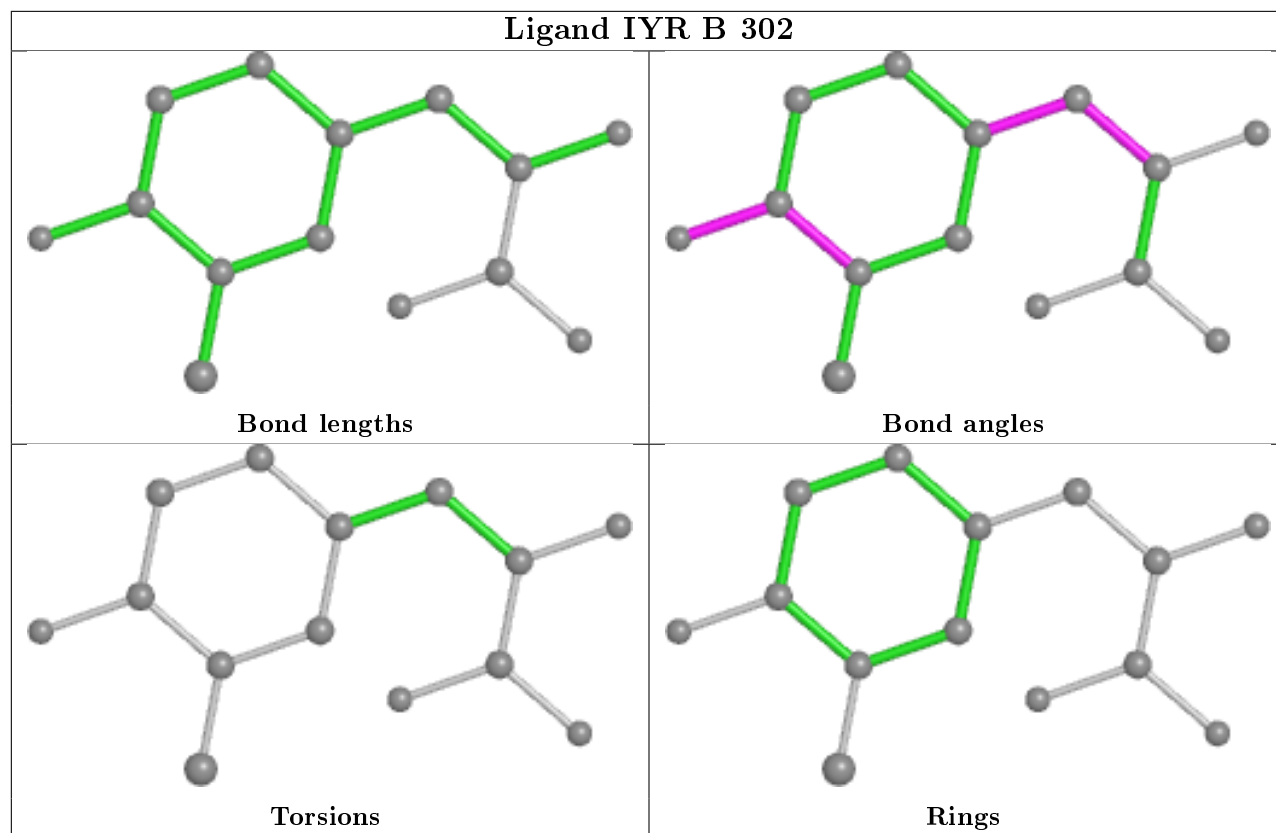
4 monomers are involved in 7 short contacts:

Mol	Chain	Res	Type	Clashes	Symm-Clashes
2	B	301	FMN	2	0
2	A	301	FMN	1	0
4	B	303	FLC	2	0
4	A	303	FLC	2	0

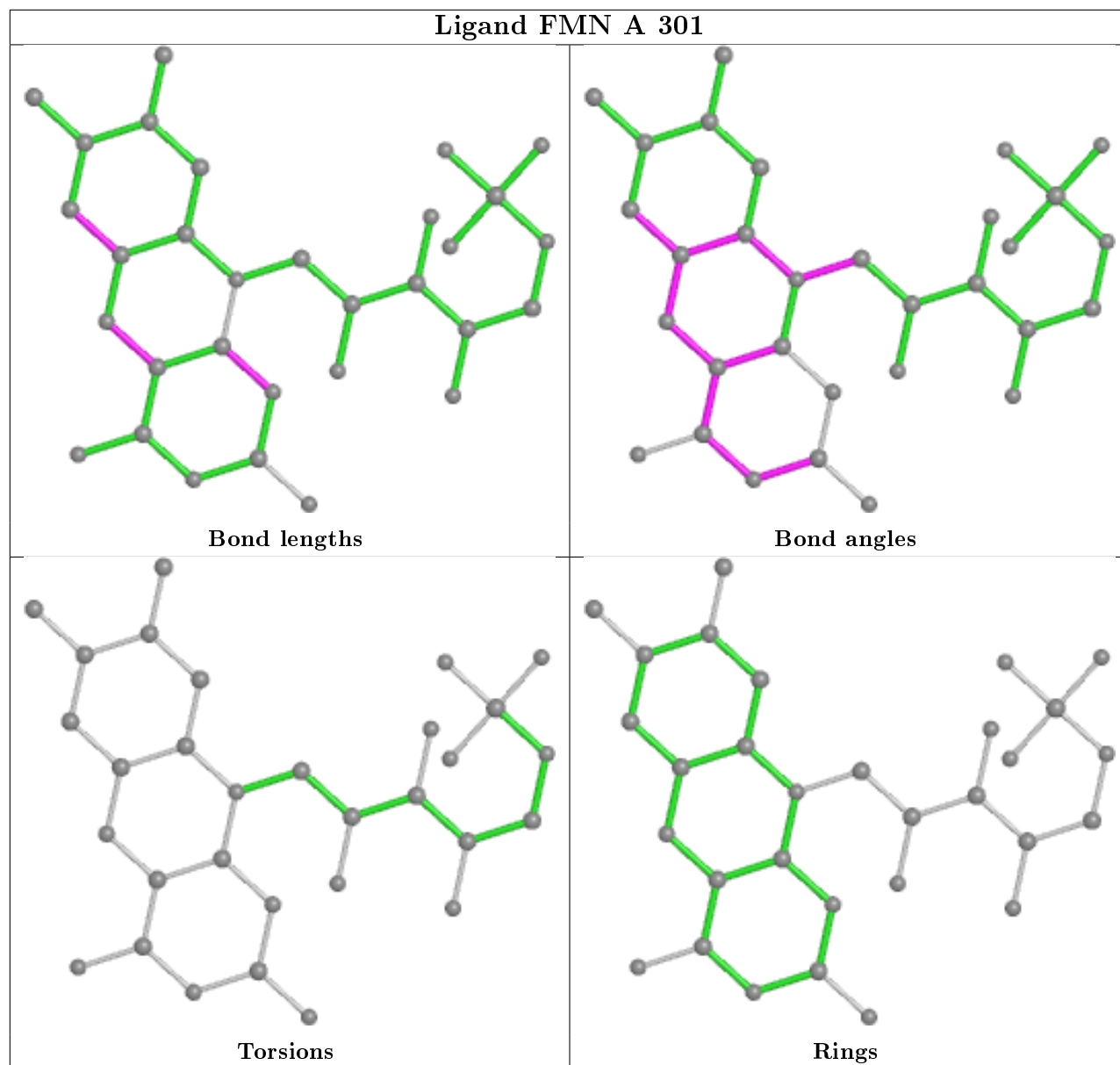
The following is a two-dimensional graphical depiction of Mogul quality analysis of bond lengths, bond angles, torsion angles, and ring geometry for all instances of the Ligand of Interest. In addition, ligands with molecular weight > 250 and outliers as shown on the validation Tables will

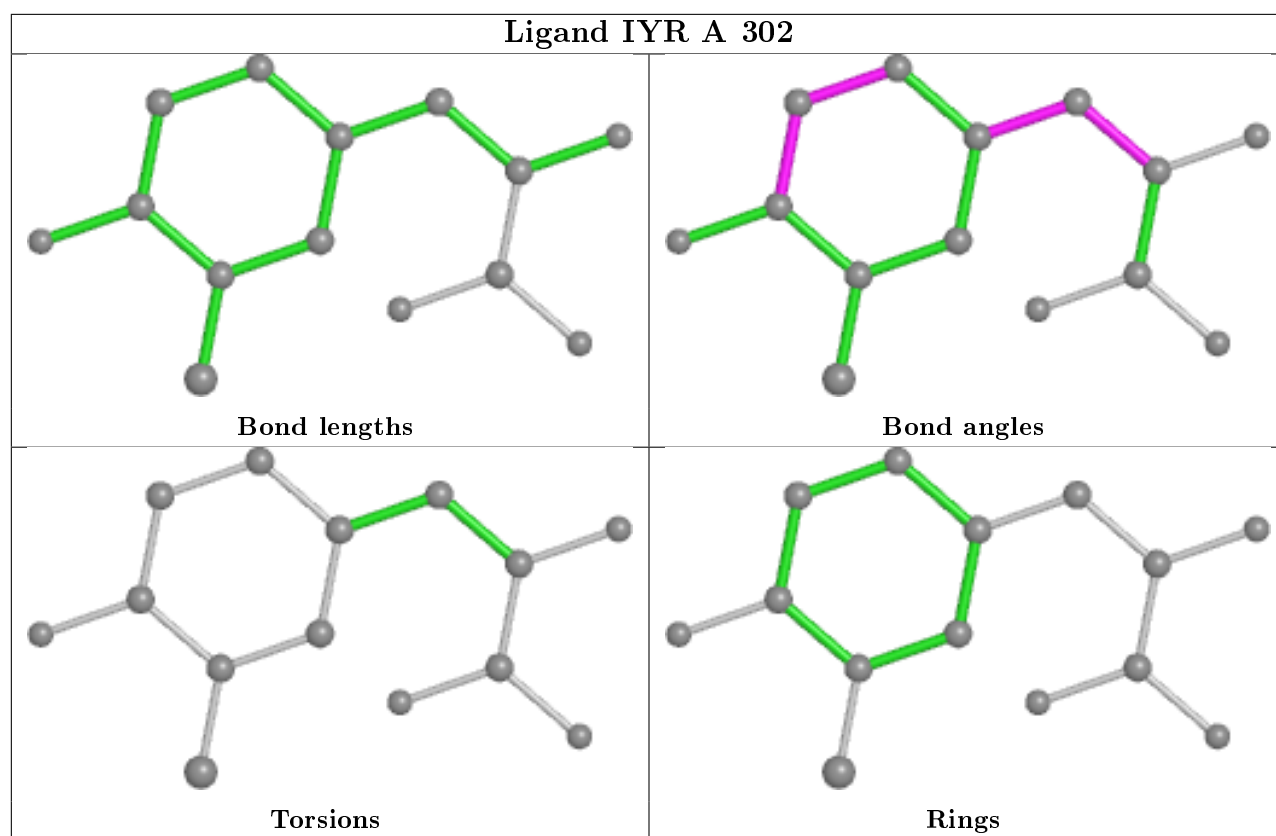
also be included. For torsion angles, if less than 5% of the Mogul distribution of torsion angles is within 10 degrees of the torsion angle in question, then that torsion angle is considered an outlier. Any bond that is central to one or more torsion angles identified as an outlier by Mogul will be highlighted in the graph. For rings, the root-mean-square deviation (RMSD) between the ring in question and similar rings identified by Mogul is calculated over all ring torsion angles. If the average RMSD is greater than 60 degrees and the minimal RMSD between the ring in question and any Mogul-identified rings is also greater than 60 degrees, then that ring is considered an outlier. The outliers are highlighted in purple. The color gray indicates Mogul did not find sufficient equivalents in the CSD to analyse the geometry.











## 5.7 Other polymers [i](#)

There are no such residues in this entry.

## 5.8 Polymer linkage issues [i](#)

There are no chain breaks in this entry.

## 6 Fit of model and data [i](#)

### 6.1 Protein, DNA and RNA chains [i](#)

In the following table, the column labelled ‘#RSRZ> 2’ contains the number (and percentage) of RSRZ outliers, followed by percent RSRZ outliers for the chain as percentile scores relative to all X-ray entries and entries of similar resolution. The OWAB column contains the minimum, median, 95<sup>th</sup> percentile and maximum values of the occupancy-weighted average B-factor per residue. The column labelled ‘Q< 0.9’ lists the number of (and percentage) of residues with an average occupancy less than 0.9.

Mol	Chain	Analysed	<RSRZ>	#RSRZ>2	OWAB(Å <sup>2</sup> )	Q<0.9
1	A	222/259 (85%)	-0.88	2 (0%) 84 85	14, 24, 44, 79	0
1	B	221/259 (85%)	-0.88	1 (0%) 91 91	14, 24, 44, 77	0
All	All	443/518 (85%)	-0.88	3 (0%) 87 88	14, 24, 44, 79	0

All (3) RSRZ outliers are listed below:

Mol	Chain	Res	Type	RSRZ
1	A	66	SER	2.6
1	A	286	HIS	2.6
1	B	286	HIS	2.1

### 6.2 Non-standard residues in protein, DNA, RNA chains [i](#)

There are no non-standard protein/DNA/RNA residues in this entry.

### 6.3 Carbohydrates [i](#)

There are no carbohydrates in this entry.

### 6.4 Ligands [i](#)

In the following table, the Atoms column lists the number of modelled atoms in the group and the number defined in the chemical component dictionary. The B-factors column lists the minimum, median, 95<sup>th</sup> percentile and maximum values of B factors of atoms in the group. The column labelled ‘Q< 0.9’ lists the number of atoms with occupancy less than 0.9.

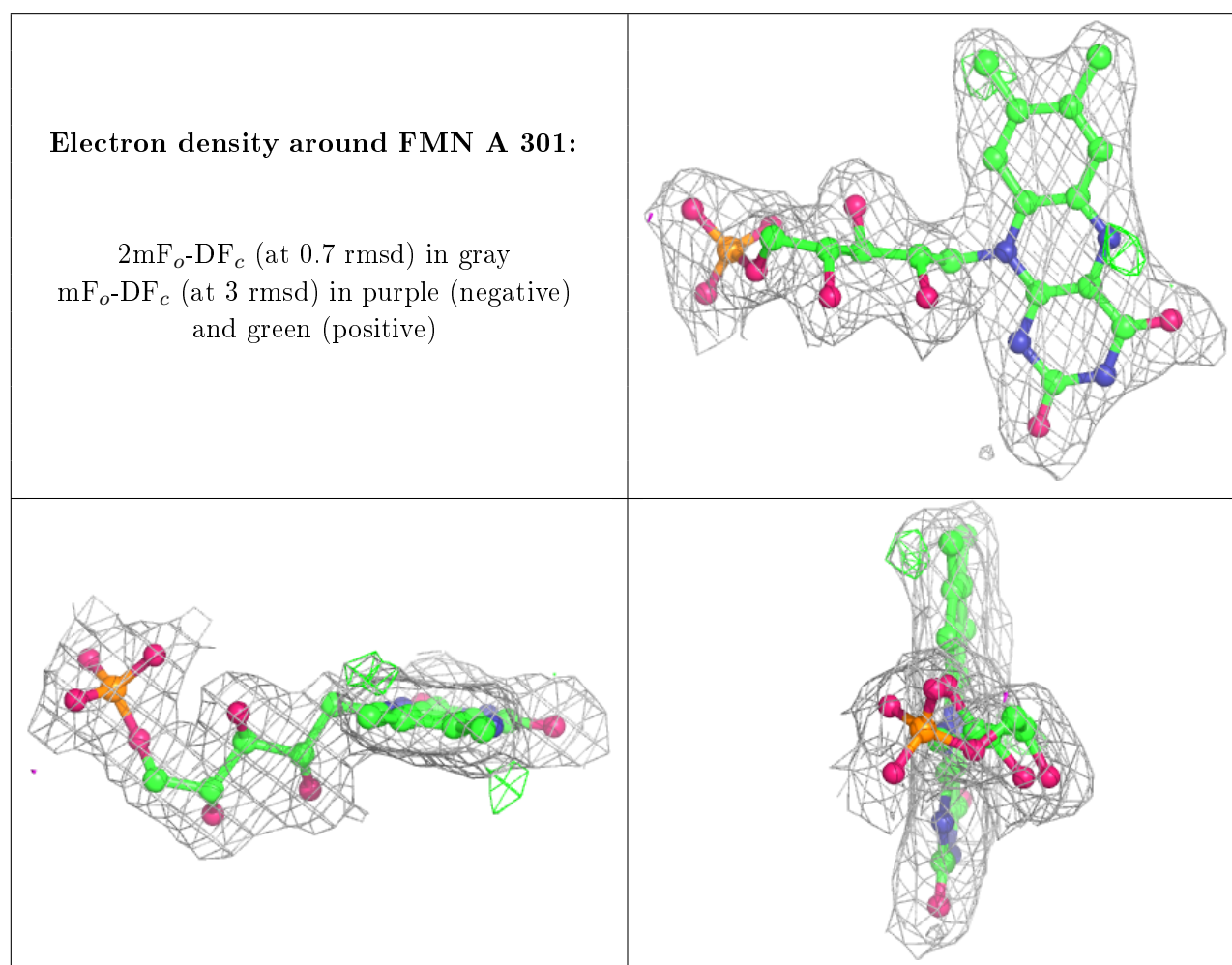
Mol	Type	Chain	Res	Atoms	RSCC	RSR	B-factors(Å <sup>2</sup> )	Q<0.9
4	FLC	A	303	13/13	0.88	0.20	43,66,75,77	0
4	FLC	B	303	13/13	0.89	0.18	42,58,71,72	0

*Continued on next page...*

*Continued from previous page...*

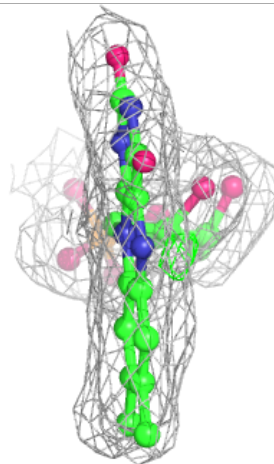
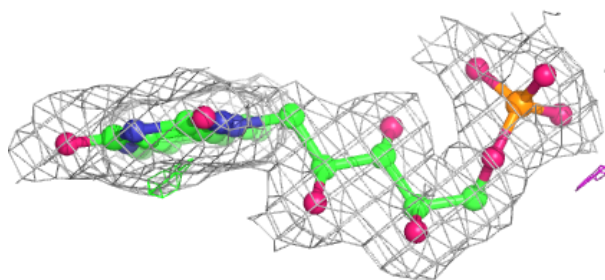
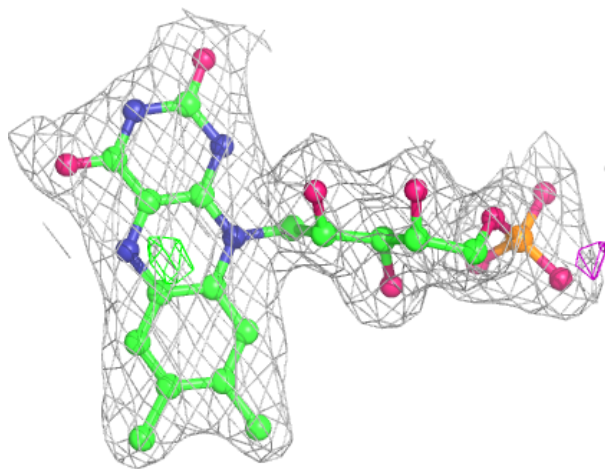
Mol	Type	Chain	Res	Atoms	RSCC	RSR	B-factors( $\text{\AA}^2$ )	Q<0.9
2	FMN	A	301	31/31	0.98	0.09	10,18,24,25	0
5	GOL	B	304	6/6	0.98	0.07	20,36,49,49	0
2	FMN	B	301	31/31	0.98	0.09	9,18,24,26	0
5	GOL	A	304	6/6	0.98	0.07	20,35,42,46	0
3	IYR	A	302	14/14	1.00	0.08	14,19,25,25	0
3	IYR	B	302	14/14	1.00	0.09	12,19,24,25	0

The following is a graphical depiction of the model fit to experimental electron density of all instances of the Ligand of Interest. In addition, ligands with molecular weight > 250 and outliers as shown on the geometry validation Tables will also be included. Each fit is shown from different orientation to approximate a three-dimensional view.



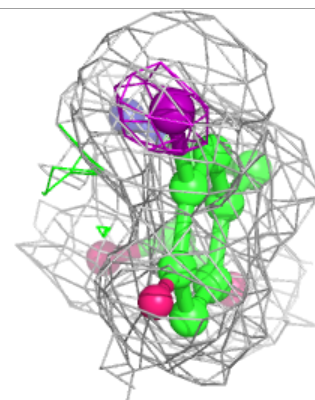
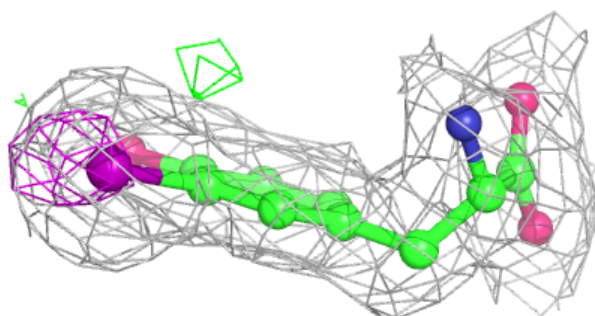
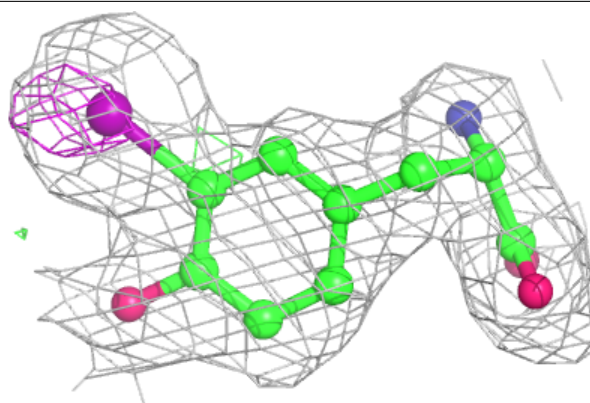
**Electron density around FMN B 301:**

$2mF_o-DF_c$  (at 0.7 rmsd) in gray  
 $mF_o-DF_c$  (at 3 rmsd) in purple (negative)  
and green (positive)

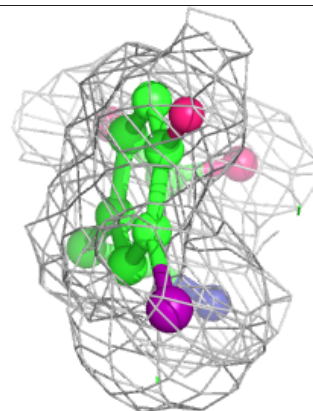
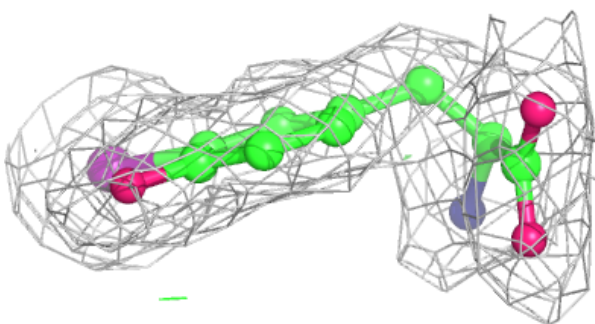
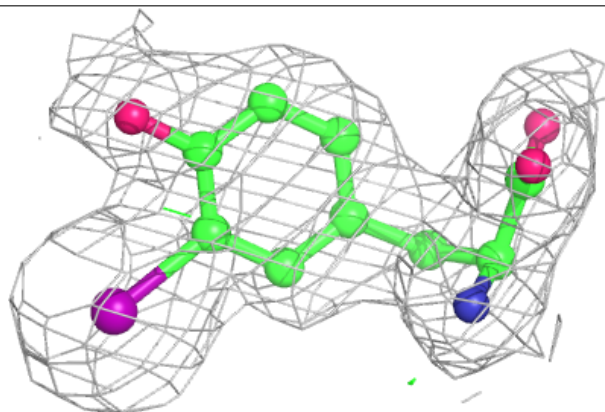


**Electron density around IYR A 302:**

$2mF_o-DF_c$  (at 0.7 rmsd) in gray  
 $mF_o-DF_c$  (at 3 rmsd) in purple (negative)  
and green (positive)

**Electron density around IYR B 302:**

$2mF_o-DF_c$  (at 0.7 rmsd) in gray  
 $mF_o-DF_c$  (at 3 rmsd) in purple (negative)  
and green (positive)



## 6.5 Other polymers [i](#)

There are no such residues in this entry.