



wwPDB X-ray Structure Validation Summary Report ⓘ

May 29, 2020 – 11:09 pm BST

PDB ID : 3TOZ
Title : 2.2 Angstrom Crystal Structure of Shikimate 5-dehydrogenase from *Listeria monocytogenes* in Complex with NAD.
Authors : Minasov, G.; Light, S.H.; Halavaty, A.; Shuvalova, L.; Papazisi, L.; Anderson, W.F.; Center for Structural Genomics of Infectious Diseases (CSGID)
Deposited on : 2011-09-06
Resolution : 2.20 Å(reported)

This is a wwPDB X-ray Structure Validation Summary Report for a publicly released PDB entry.

We welcome your comments at validation@mail.wwpdb.org

A user guide is available at

<https://www.wwpdb.org/validation/2017/XrayValidationReportHelp>

with specific help available everywhere you see the ⓘ symbol.

The following versions of software and data (see [references ⓘ](#)) were used in the production of this report:

MolProbity : 4.02b-467
Mogul : 1.8.5 (274361), CSD as541be (2020)
Xtriage (Phenix) : 1.13
EDS : 2.11
buster-report : 1.1.7 (2018)
Percentile statistics : 20191225.v01 (using entries in the PDB archive December 25th 2019)
Refmac : 5.8.0158
CCP4 : 7.0.044 (Gargrove)
Ideal geometry (proteins) : Engh & Huber (2001)
Ideal geometry (DNA, RNA) : Parkinson et al. (1996)
Validation Pipeline (wwPDB-VP) : 2.11

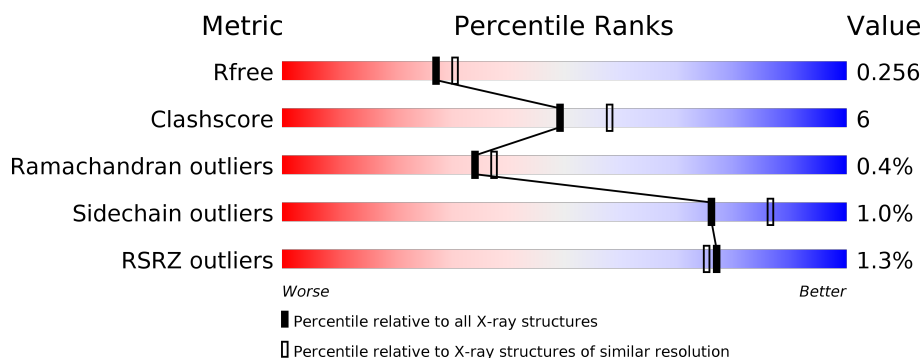
1 Overall quality at a glance

The following experimental techniques were used to determine the structure:

X-RAY DIFFRACTION

The reported resolution of this entry is 2.20 Å.

Percentile scores (ranging between 0-100) for global validation metrics of the entry are shown in the following graphic. The table shows the number of entries on which the scores are based.



Metric	Whole archive (#Entries)	Similar resolution (#Entries, resolution range(Å))
R_{free}	130704	4898 (2.20-2.20)
Clashscore	141614	5594 (2.20-2.20)
Ramachandran outliers	138981	5503 (2.20-2.20)
Sidechain outliers	138945	5504 (2.20-2.20)
RSRZ outliers	127900	4800 (2.20-2.20)

The table below summarises the geometric issues observed across the polymeric chains and their fit to the electron density. The red, orange, yellow and green segments on the lower bar indicate the fraction of residues that contain outliers for ≥ 3 , 2, 1 and 0 types of geometric quality criteria respectively. A grey segment represents the fraction of residues that are not modelled. The numeric value for each fraction is indicated below the corresponding segment, with a dot representing fractions $\leq 5\%$. The upper red bar (where present) indicates the fraction of residues that have poor fit to the electron density. The numeric value is given above the bar.

Mol	Chain	Length	Quality of chain
1	A	315	<div> <div>%</div> <div> <div></div> <div>79%</div> <div>12%</div> <div>8%</div> </div> </div>
1	B	315	<div> <div>%</div> <div> <div></div> <div>84%</div> <div>8%</div> <div>8%</div> </div> </div>
1	C	315	<div> <div>%</div> <div> <div></div> <div>77%</div> <div>14%</div> <div>9%</div> </div> </div>

2 Entry composition

There are 5 unique types of molecules in this entry. The entry contains 19603 atoms, of which 0 are hydrogens and 0 are deuteriums.

In the tables below, the ZeroOcc column contains the number of atoms modelled with zero occupancy, the AltConf column contains the number of residues with at least one atom in alternate conformation and the Trace column contains the number of residues modelled with at most 2 atoms.

- Molecule 1 is a protein called Shikimate dehydrogenase.

Mol	Chain	Residues	Atoms					ZeroOcc	AltConf	Trace
1	A	291	Total	C	N	O	S	0	7	0
			2315	1466	391	442	16			
1	B	290	Total	C	N	O	S	0	3	0
			2272	1439	382	436	15			
1	C	287	Total	C	N	O	S	0	5	0
			2269	1438	386	430	15			
1	D	289	Total	C	N	O	S	0	1	0
			2250	1427	381	428	14			
1	E	289	Total	C	N	O	S	0	3	0
			2269	1437	386	432	14			
1	F	287	Total	C	N	O	S	0	2	0
			2240	1421	376	428	15			
1	G	291	Total	C	N	O	S	0	1	0
			2263	1435	381	431	16			
1	H	291	Total	C	N	O	S	0	5	0
			2299	1457	388	439	15			

There are 192 discrepancies between the modelled and reference sequences:

Chain	Residue	Modelled	Actual	Comment	Reference
A	-23	MET	-	EXPRESSION TAG	UNP Q8Y9N5
A	-22	HIS	-	EXPRESSION TAG	UNP Q8Y9N5
A	-21	HIS	-	EXPRESSION TAG	UNP Q8Y9N5
A	-20	HIS	-	EXPRESSION TAG	UNP Q8Y9N5
A	-19	HIS	-	EXPRESSION TAG	UNP Q8Y9N5
A	-18	HIS	-	EXPRESSION TAG	UNP Q8Y9N5
A	-17	HIS	-	EXPRESSION TAG	UNP Q8Y9N5
A	-16	SER	-	EXPRESSION TAG	UNP Q8Y9N5
A	-15	SER	-	EXPRESSION TAG	UNP Q8Y9N5
A	-14	GLY	-	EXPRESSION TAG	UNP Q8Y9N5
A	-13	VAL	-	EXPRESSION TAG	UNP Q8Y9N5
A	-12	ASP	-	EXPRESSION TAG	UNP Q8Y9N5
A	-11	LEU	-	EXPRESSION TAG	UNP Q8Y9N5

Continued on next page...

Continued from previous page...

Chain	Residue	Modelled	Actual	Comment	Reference
A	-10	GLY	-	EXPRESSION TAG	UNP Q8Y9N5
A	-9	THR	-	EXPRESSION TAG	UNP Q8Y9N5
A	-8	GLU	-	EXPRESSION TAG	UNP Q8Y9N5
A	-7	ASN	-	EXPRESSION TAG	UNP Q8Y9N5
A	-6	LEU	-	EXPRESSION TAG	UNP Q8Y9N5
A	-5	TYR	-	EXPRESSION TAG	UNP Q8Y9N5
A	-4	PHE	-	EXPRESSION TAG	UNP Q8Y9N5
A	-3	GLN	-	EXPRESSION TAG	UNP Q8Y9N5
A	-2	SER	-	EXPRESSION TAG	UNP Q8Y9N5
A	-1	ASN	-	EXPRESSION TAG	UNP Q8Y9N5
A	0	ALA	-	EXPRESSION TAG	UNP Q8Y9N5
B	-23	MET	-	EXPRESSION TAG	UNP Q8Y9N5
B	-22	HIS	-	EXPRESSION TAG	UNP Q8Y9N5
B	-21	HIS	-	EXPRESSION TAG	UNP Q8Y9N5
B	-20	HIS	-	EXPRESSION TAG	UNP Q8Y9N5
B	-19	HIS	-	EXPRESSION TAG	UNP Q8Y9N5
B	-18	HIS	-	EXPRESSION TAG	UNP Q8Y9N5
B	-17	HIS	-	EXPRESSION TAG	UNP Q8Y9N5
B	-16	SER	-	EXPRESSION TAG	UNP Q8Y9N5
B	-15	SER	-	EXPRESSION TAG	UNP Q8Y9N5
B	-14	GLY	-	EXPRESSION TAG	UNP Q8Y9N5
B	-13	VAL	-	EXPRESSION TAG	UNP Q8Y9N5
B	-12	ASP	-	EXPRESSION TAG	UNP Q8Y9N5
B	-11	LEU	-	EXPRESSION TAG	UNP Q8Y9N5
B	-10	GLY	-	EXPRESSION TAG	UNP Q8Y9N5
B	-9	THR	-	EXPRESSION TAG	UNP Q8Y9N5
B	-8	GLU	-	EXPRESSION TAG	UNP Q8Y9N5
B	-7	ASN	-	EXPRESSION TAG	UNP Q8Y9N5
B	-6	LEU	-	EXPRESSION TAG	UNP Q8Y9N5
B	-5	TYR	-	EXPRESSION TAG	UNP Q8Y9N5
B	-4	PHE	-	EXPRESSION TAG	UNP Q8Y9N5
B	-3	GLN	-	EXPRESSION TAG	UNP Q8Y9N5
B	-2	SER	-	EXPRESSION TAG	UNP Q8Y9N5
B	-1	ASN	-	EXPRESSION TAG	UNP Q8Y9N5
B	0	ALA	-	EXPRESSION TAG	UNP Q8Y9N5
C	-23	MET	-	EXPRESSION TAG	UNP Q8Y9N5
C	-22	HIS	-	EXPRESSION TAG	UNP Q8Y9N5
C	-21	HIS	-	EXPRESSION TAG	UNP Q8Y9N5
C	-20	HIS	-	EXPRESSION TAG	UNP Q8Y9N5
C	-19	HIS	-	EXPRESSION TAG	UNP Q8Y9N5
C	-18	HIS	-	EXPRESSION TAG	UNP Q8Y9N5
C	-17	HIS	-	EXPRESSION TAG	UNP Q8Y9N5

Continued on next page...

Continued from previous page...

Chain	Residue	Modelled	Actual	Comment	Reference
C	-16	SER	-	EXPRESSION TAG	UNP Q8Y9N5
C	-15	SER	-	EXPRESSION TAG	UNP Q8Y9N5
C	-14	GLY	-	EXPRESSION TAG	UNP Q8Y9N5
C	-13	VAL	-	EXPRESSION TAG	UNP Q8Y9N5
C	-12	ASP	-	EXPRESSION TAG	UNP Q8Y9N5
C	-11	LEU	-	EXPRESSION TAG	UNP Q8Y9N5
C	-10	GLY	-	EXPRESSION TAG	UNP Q8Y9N5
C	-9	THR	-	EXPRESSION TAG	UNP Q8Y9N5
C	-8	GLU	-	EXPRESSION TAG	UNP Q8Y9N5
C	-7	ASN	-	EXPRESSION TAG	UNP Q8Y9N5
C	-6	LEU	-	EXPRESSION TAG	UNP Q8Y9N5
C	-5	TYR	-	EXPRESSION TAG	UNP Q8Y9N5
C	-4	PHE	-	EXPRESSION TAG	UNP Q8Y9N5
C	-3	GLN	-	EXPRESSION TAG	UNP Q8Y9N5
C	-2	SER	-	EXPRESSION TAG	UNP Q8Y9N5
C	-1	ASN	-	EXPRESSION TAG	UNP Q8Y9N5
C	0	ALA	-	EXPRESSION TAG	UNP Q8Y9N5
D	-23	MET	-	EXPRESSION TAG	UNP Q8Y9N5
D	-22	HIS	-	EXPRESSION TAG	UNP Q8Y9N5
D	-21	HIS	-	EXPRESSION TAG	UNP Q8Y9N5
D	-20	HIS	-	EXPRESSION TAG	UNP Q8Y9N5
D	-19	HIS	-	EXPRESSION TAG	UNP Q8Y9N5
D	-18	HIS	-	EXPRESSION TAG	UNP Q8Y9N5
D	-17	HIS	-	EXPRESSION TAG	UNP Q8Y9N5
D	-16	SER	-	EXPRESSION TAG	UNP Q8Y9N5
D	-15	SER	-	EXPRESSION TAG	UNP Q8Y9N5
D	-14	GLY	-	EXPRESSION TAG	UNP Q8Y9N5
D	-13	VAL	-	EXPRESSION TAG	UNP Q8Y9N5
D	-12	ASP	-	EXPRESSION TAG	UNP Q8Y9N5
D	-11	LEU	-	EXPRESSION TAG	UNP Q8Y9N5
D	-10	GLY	-	EXPRESSION TAG	UNP Q8Y9N5
D	-9	THR	-	EXPRESSION TAG	UNP Q8Y9N5
D	-8	GLU	-	EXPRESSION TAG	UNP Q8Y9N5
D	-7	ASN	-	EXPRESSION TAG	UNP Q8Y9N5
D	-6	LEU	-	EXPRESSION TAG	UNP Q8Y9N5
D	-5	TYR	-	EXPRESSION TAG	UNP Q8Y9N5
D	-4	PHE	-	EXPRESSION TAG	UNP Q8Y9N5
D	-3	GLN	-	EXPRESSION TAG	UNP Q8Y9N5
D	-2	SER	-	EXPRESSION TAG	UNP Q8Y9N5
D	-1	ASN	-	EXPRESSION TAG	UNP Q8Y9N5
D	0	ALA	-	EXPRESSION TAG	UNP Q8Y9N5
E	-23	MET	-	EXPRESSION TAG	UNP Q8Y9N5

Continued on next page...

Continued from previous page...

Chain	Residue	Modelled	Actual	Comment	Reference
E	-22	HIS	-	EXPRESSION TAG	UNP Q8Y9N5
E	-21	HIS	-	EXPRESSION TAG	UNP Q8Y9N5
E	-20	HIS	-	EXPRESSION TAG	UNP Q8Y9N5
E	-19	HIS	-	EXPRESSION TAG	UNP Q8Y9N5
E	-18	HIS	-	EXPRESSION TAG	UNP Q8Y9N5
E	-17	HIS	-	EXPRESSION TAG	UNP Q8Y9N5
E	-16	SER	-	EXPRESSION TAG	UNP Q8Y9N5
E	-15	SER	-	EXPRESSION TAG	UNP Q8Y9N5
E	-14	GLY	-	EXPRESSION TAG	UNP Q8Y9N5
E	-13	VAL	-	EXPRESSION TAG	UNP Q8Y9N5
E	-12	ASP	-	EXPRESSION TAG	UNP Q8Y9N5
E	-11	LEU	-	EXPRESSION TAG	UNP Q8Y9N5
E	-10	GLY	-	EXPRESSION TAG	UNP Q8Y9N5
E	-9	THR	-	EXPRESSION TAG	UNP Q8Y9N5
E	-8	GLU	-	EXPRESSION TAG	UNP Q8Y9N5
E	-7	ASN	-	EXPRESSION TAG	UNP Q8Y9N5
E	-6	LEU	-	EXPRESSION TAG	UNP Q8Y9N5
E	-5	TYR	-	EXPRESSION TAG	UNP Q8Y9N5
E	-4	PHE	-	EXPRESSION TAG	UNP Q8Y9N5
E	-3	GLN	-	EXPRESSION TAG	UNP Q8Y9N5
E	-2	SER	-	EXPRESSION TAG	UNP Q8Y9N5
E	-1	ASN	-	EXPRESSION TAG	UNP Q8Y9N5
E	0	ALA	-	EXPRESSION TAG	UNP Q8Y9N5
F	-23	MET	-	EXPRESSION TAG	UNP Q8Y9N5
F	-22	HIS	-	EXPRESSION TAG	UNP Q8Y9N5
F	-21	HIS	-	EXPRESSION TAG	UNP Q8Y9N5
F	-20	HIS	-	EXPRESSION TAG	UNP Q8Y9N5
F	-19	HIS	-	EXPRESSION TAG	UNP Q8Y9N5
F	-18	HIS	-	EXPRESSION TAG	UNP Q8Y9N5
F	-17	HIS	-	EXPRESSION TAG	UNP Q8Y9N5
F	-16	SER	-	EXPRESSION TAG	UNP Q8Y9N5
F	-15	SER	-	EXPRESSION TAG	UNP Q8Y9N5
F	-14	GLY	-	EXPRESSION TAG	UNP Q8Y9N5
F	-13	VAL	-	EXPRESSION TAG	UNP Q8Y9N5
F	-12	ASP	-	EXPRESSION TAG	UNP Q8Y9N5
F	-11	LEU	-	EXPRESSION TAG	UNP Q8Y9N5
F	-10	GLY	-	EXPRESSION TAG	UNP Q8Y9N5
F	-9	THR	-	EXPRESSION TAG	UNP Q8Y9N5
F	-8	GLU	-	EXPRESSION TAG	UNP Q8Y9N5
F	-7	ASN	-	EXPRESSION TAG	UNP Q8Y9N5
F	-6	LEU	-	EXPRESSION TAG	UNP Q8Y9N5
F	-5	TYR	-	EXPRESSION TAG	UNP Q8Y9N5

Continued on next page...

Continued from previous page...

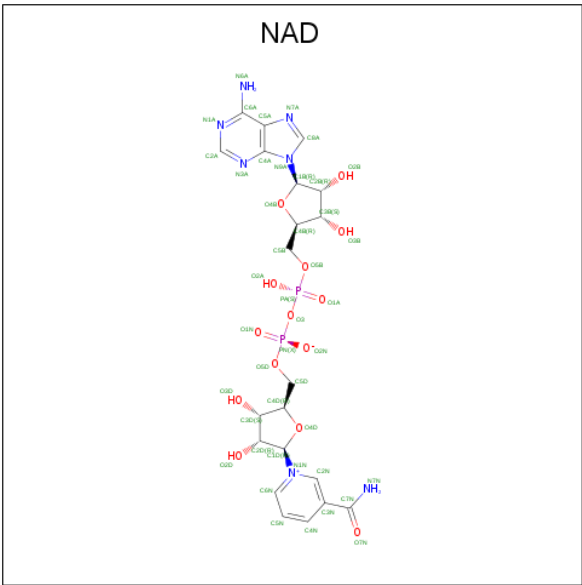
Chain	Residue	Modelled	Actual	Comment	Reference
F	-4	PHE	-	EXPRESSION TAG	UNP Q8Y9N5
F	-3	GLN	-	EXPRESSION TAG	UNP Q8Y9N5
F	-2	SER	-	EXPRESSION TAG	UNP Q8Y9N5
F	-1	ASN	-	EXPRESSION TAG	UNP Q8Y9N5
F	0	ALA	-	EXPRESSION TAG	UNP Q8Y9N5
G	-23	MET	-	EXPRESSION TAG	UNP Q8Y9N5
G	-22	HIS	-	EXPRESSION TAG	UNP Q8Y9N5
G	-21	HIS	-	EXPRESSION TAG	UNP Q8Y9N5
G	-20	HIS	-	EXPRESSION TAG	UNP Q8Y9N5
G	-19	HIS	-	EXPRESSION TAG	UNP Q8Y9N5
G	-18	HIS	-	EXPRESSION TAG	UNP Q8Y9N5
G	-17	HIS	-	EXPRESSION TAG	UNP Q8Y9N5
G	-16	SER	-	EXPRESSION TAG	UNP Q8Y9N5
G	-15	SER	-	EXPRESSION TAG	UNP Q8Y9N5
G	-14	GLY	-	EXPRESSION TAG	UNP Q8Y9N5
G	-13	VAL	-	EXPRESSION TAG	UNP Q8Y9N5
G	-12	ASP	-	EXPRESSION TAG	UNP Q8Y9N5
G	-11	LEU	-	EXPRESSION TAG	UNP Q8Y9N5
G	-10	GLY	-	EXPRESSION TAG	UNP Q8Y9N5
G	-9	THR	-	EXPRESSION TAG	UNP Q8Y9N5
G	-8	GLU	-	EXPRESSION TAG	UNP Q8Y9N5
G	-7	ASN	-	EXPRESSION TAG	UNP Q8Y9N5
G	-6	LEU	-	EXPRESSION TAG	UNP Q8Y9N5
G	-5	TYR	-	EXPRESSION TAG	UNP Q8Y9N5
G	-4	PHE	-	EXPRESSION TAG	UNP Q8Y9N5
G	-3	GLN	-	EXPRESSION TAG	UNP Q8Y9N5
G	-2	SER	-	EXPRESSION TAG	UNP Q8Y9N5
G	-1	ASN	-	EXPRESSION TAG	UNP Q8Y9N5
G	0	ALA	-	EXPRESSION TAG	UNP Q8Y9N5
H	-23	MET	-	EXPRESSION TAG	UNP Q8Y9N5
H	-22	HIS	-	EXPRESSION TAG	UNP Q8Y9N5
H	-21	HIS	-	EXPRESSION TAG	UNP Q8Y9N5
H	-20	HIS	-	EXPRESSION TAG	UNP Q8Y9N5
H	-19	HIS	-	EXPRESSION TAG	UNP Q8Y9N5
H	-18	HIS	-	EXPRESSION TAG	UNP Q8Y9N5
H	-17	HIS	-	EXPRESSION TAG	UNP Q8Y9N5
H	-16	SER	-	EXPRESSION TAG	UNP Q8Y9N5
H	-15	SER	-	EXPRESSION TAG	UNP Q8Y9N5
H	-14	GLY	-	EXPRESSION TAG	UNP Q8Y9N5
H	-13	VAL	-	EXPRESSION TAG	UNP Q8Y9N5
H	-12	ASP	-	EXPRESSION TAG	UNP Q8Y9N5
H	-11	LEU	-	EXPRESSION TAG	UNP Q8Y9N5

Continued on next page...

Continued from previous page...

Chain	Residue	Modelled	Actual	Comment	Reference
H	-10	GLY	-	EXPRESSION TAG	UNP Q8Y9N5
H	-9	THR	-	EXPRESSION TAG	UNP Q8Y9N5
H	-8	GLU	-	EXPRESSION TAG	UNP Q8Y9N5
H	-7	ASN	-	EXPRESSION TAG	UNP Q8Y9N5
H	-6	LEU	-	EXPRESSION TAG	UNP Q8Y9N5
H	-5	TYR	-	EXPRESSION TAG	UNP Q8Y9N5
H	-4	PHE	-	EXPRESSION TAG	UNP Q8Y9N5
H	-3	GLN	-	EXPRESSION TAG	UNP Q8Y9N5
H	-2	SER	-	EXPRESSION TAG	UNP Q8Y9N5
H	-1	ASN	-	EXPRESSION TAG	UNP Q8Y9N5
H	0	ALA	-	EXPRESSION TAG	UNP Q8Y9N5

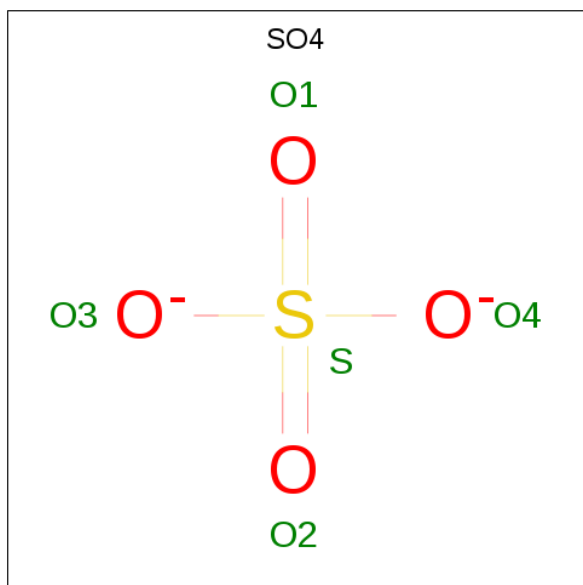
- Molecule 2 is NICOTINAMIDE-ADENINE-DINUCLEOTIDE (three-letter code: NAD) (formula: C₂₁H₂₇N₇O₁₄P₂).



Continued from previous page...

Mol	Chain	Residues	Atoms					ZeroOcc	AltConf
2	F	1	Total	C	N	O	P	0	0
			44	21	7	14	2		
2	G	1	Total	C	N	O	P	0	0
			44	21	7	14	2		
2	H	1	Total	C	N	O	P	0	0
			44	21	7	14	2		

- Molecule 3 is SULFATE ION (three-letter code: SO4) (formula: O₄S).



Mol	Chain	Residues	Atoms			ZeroOcc	AltConf
3	A	1	Total	O	S	0	0
			5	4	1		
3	A	1	Total	O	S	0	0
			5	4	1		
3	B	1	Total	O	S	0	0
			5	4	1		
3	B	1	Total	O	S	0	0
			5	4	1		
3	B	1	Total	O	S	0	0
			5	4	1		
3	F	1	Total	O	S	0	0
			5	4	1		
3	G	1	Total	O	S	0	0
			5	4	1		
3	H	1	Total	O	S	0	0
			5	4	1		

- Molecule 4 is CHLORIDE ION (three-letter code: CL) (formula: Cl).

Mol	Chain	Residues	Atoms		ZeroOcc	AltConf
4	H	1	Total 1	Cl 1	0	0
4	C	2	Total 2	Cl 2	0	0
4	E	1	Total 1	Cl 1	0	0

- Molecule 5 is water.

Mol	Chain	Residues	Atoms		ZeroOcc	AltConf
5	A	120	Total 121	O 121	0	1
5	B	121	Total 125	O 125	0	5
5	C	132	Total 136	O 136	0	4
5	D	99	Total 99	O 99	0	0
5	E	155	Total 159	O 159	0	4
5	F	144	Total 147	O 147	0	3
5	G	104	Total 105	O 105	0	1
5	H	135	Total 138	O 138	0	3

SEQUENCE-PLOTS INFOmissingINFO

3 Data and refinement statistics

Property	Value	Source
Space group	P 1 21 1	Depositor
Cell constants a, b, c, α , β , γ	70.13Å 78.43Å 214.83Å 90.00° 90.49° 90.00°	Depositor
Resolution (Å)	29.63 – 2.20 29.63 – 2.20	Depositor EDS
% Data completeness (in resolution range)	98.2 (29.63-2.20) 98.2 (29.63-2.20)	Depositor EDS
R_{merge}	0.10	Depositor
R_{sym}	(Not available)	Depositor
$\langle I/\sigma(I) \rangle$ ¹	3.32 (at 2.20Å)	Xtriage
Refinement program	REFMAC 5.5.0109	Depositor
R, R_{free}	0.195 , 0.256 0.198 , 0.256	Depositor DCC
R_{free} test set	5836 reflections (5.01%)	wwPDB-VP
Wilson B-factor (Å ²)	32.6	Xtriage
Anisotropy	0.773	Xtriage
Bulk solvent k_{sol} (e/Å ³), B_{sol} (Å ²)	0.31 , 39.4	EDS
L-test for twinning ²	$\langle L \rangle = 0.49$, $\langle L^2 \rangle = 0.32$	Xtriage
Estimated twinning fraction	0.022 for h,-k,-l	Xtriage
F_o, F_c correlation	0.95	EDS
Total number of atoms	19603	wwPDB-VP
Average B, all atoms (Å ²)	41.0	wwPDB-VP

Xtriage's analysis on translational NCS is as follows: *The analyses of the Patterson function reveals a significant off-origin peak that is 23.81 % of the origin peak, indicating pseudo-translational symmetry. The chance of finding a peak of this or larger height randomly in a structure without pseudo-translational symmetry is equal to 4.3343e-03. The detected translational NCS is most likely also responsible for the elevated intensity ratio.*

¹Intensities estimated from amplitudes.

²Theoretical values of $\langle |L| \rangle$, $\langle L^2 \rangle$ for acentric reflections are 0.5, 0.333 respectively for untwinned datasets, and 0.375, 0.2 for perfectly twinned datasets.

4 Model quality [i](#)

4.1 Standard geometry [i](#)

Bond lengths and bond angles in the following residue types are not validated in this section: SO4, NAD, CL

The Z score for a bond length (or angle) is the number of standard deviations the observed value is removed from the expected value. A bond length (or angle) with $|Z| > 5$ is considered an outlier worth inspection. RMSZ is the root-mean-square of all Z scores of the bond lengths (or angles).

Mol	Chain	Bond lengths		Bond angles	
		RMSZ	# Z >5	RMSZ	# Z >5
1	A	0.56	0/2354	0.72	0/3178
1	B	0.53	0/2311	0.72	0/3121
1	C	0.63	0/2310	0.74	0/3120
1	D	0.49	0/2290	0.72	0/3092
1	E	0.55	0/2309	0.71	0/3117
1	F	0.58	0/2279	0.74	1/3078 (0.0%)
1	G	0.52	0/2302	0.71	0/3108
1	H	0.60	0/2339	0.74	0/3157
All	All	0.56	0/18494	0.72	1/24971 (0.0%)

There are no bond length outliers.

All (1) bond angle outliers are listed below:

Mol	Chain	Res	Type	Atoms	Z	Observed(°)	Ideal(°)
1	F	162	ARG	CB-CA-C	-5.21	99.97	110.40

There are no chirality outliers.

There are no planarity outliers.

4.2 Too-close contacts [i](#)

In the following table, the Non-H and H(model) columns list the number of non-hydrogen atoms and hydrogen atoms in the chain respectively. The H(added) column lists the number of hydrogen atoms added and optimized by MolProbity. The Clashes column lists the number of clashes within the asymmetric unit, whereas Symm-Clashes lists symmetry related clashes.

Mol	Chain	Non-H	H(model)	H(added)	Clashes	Symm-Clashes
1	A	2315	0	2330	40	0
1	B	2272	0	2281	25	0

Continued on next page...

Continued from previous page...

Mol	Chain	Non-H	H(model)	H(added)	Clashes	Symm-Clashes
1	C	2269	0	2277	27	0
1	D	2250	0	2263	34	0
1	E	2269	0	2278	22	0
1	F	2240	0	2252	26	0
1	G	2263	0	2285	38	0
1	H	2299	0	2312	34	0
2	A	44	0	26	2	0
2	B	44	0	26	0	0
2	C	44	0	26	0	0
2	D	44	0	26	0	0
2	E	44	0	26	0	0
2	F	44	0	26	0	0
2	G	44	0	26	0	0
2	H	44	0	26	0	0
3	A	10	0	0	0	0
3	B	15	0	0	0	0
3	F	5	0	0	0	0
3	G	5	0	0	1	0
3	H	5	0	0	0	0
4	C	2	0	0	0	0
4	E	1	0	0	0	0
4	H	1	0	0	0	0
5	A	121	0	0	4	0
5	B	125	0	0	0	0
5	C	136	0	0	1	0
5	D	99	0	0	1	0
5	E	159	0	0	2	0
5	F	147	0	0	3	0
5	G	105	0	0	0	0
5	H	138	0	0	1	0
All	All	19603	0	18486	220	0

The all-atom clashscore is defined as the number of clashes found per 1000 atoms (including hydrogen atoms). The all-atom clashscore for this structure is 6.

The worst 5 of 220 close contacts within the same asymmetric unit are listed below, sorted by their clash magnitude.

Atom-1	Atom-2	Interatomic distance (Å)	Clash overlap (Å)
1:C:35:ALA:HB2	1:C:286:ILE:HD11	1.45	0.97
1:B:150:ALA:HB1	1:B:181:THR:HG21	1.49	0.94
1:H:35:ALA:HB2	1:H:286:ILE:HD11	1.51	0.93

Continued on next page...

Continued from previous page...

Atom-1	Atom-2	Interatomic distance (Å)	Clash overlap (Å)
1:A:262[A]:LEU:HD11	1:A:291:PHE:CE2	2.06	0.90
1:F:194[A]:GLU:CD	1:F:194[A]:GLU:H	1.79	0.86

There are no symmetry-related clashes.

4.3 Torsion angles [i](#)

4.3.1 Protein backbone [i](#)

In the following table, the Percentiles column shows the percent Ramachandran outliers of the chain as a percentile score with respect to all X-ray entries followed by that with respect to entries of similar resolution.

The Analysed column shows the number of residues for which the backbone conformation was analysed, and the total number of residues.

Mol	Chain	Analysed	Favoured	Allowed	Outliers	Percentiles	
1	A	296/315 (94%)	285 (96%)	9 (3%)	2 (1%)	22	22
1	B	291/315 (92%)	282 (97%)	8 (3%)	1 (0%)	41	46
1	C	290/315 (92%)	283 (98%)	6 (2%)	1 (0%)	41	46
1	D	288/315 (91%)	278 (96%)	8 (3%)	2 (1%)	22	22
1	E	290/315 (92%)	284 (98%)	5 (2%)	1 (0%)	41	46
1	F	287/315 (91%)	280 (98%)	6 (2%)	1 (0%)	41	46
1	G	290/315 (92%)	284 (98%)	5 (2%)	1 (0%)	41	46
1	H	294/315 (93%)	287 (98%)	6 (2%)	1 (0%)	41	46
All	All	2326/2520 (92%)	2263 (97%)	53 (2%)	10 (0%)	34	37

5 of 10 Ramachandran outliers are listed below:

Mol	Chain	Res	Type
1	B	23	ILE
1	D	192	ASP
1	F	23	ILE
1	H	23	ILE
1	A	23	ILE

4.3.2 Protein sidechains [i](#)

In the following table, the Percentiles column shows the percent sidechain outliers of the chain as a percentile score with respect to all X-ray entries followed by that with respect to entries of similar resolution.

The Analysed column shows the number of residues for which the sidechain conformation was analysed, and the total number of residues.

Mol	Chain	Analysed	Rotameric	Outliers	Percentiles	
1	A	249/263 (95%)	248 (100%)	1 (0%)	91	96
1	B	244/263 (93%)	242 (99%)	2 (1%)	81	90
1	C	243/263 (92%)	240 (99%)	3 (1%)	71	83
1	D	241/263 (92%)	236 (98%)	5 (2%)	53	67
1	E	243/263 (92%)	239 (98%)	4 (2%)	62	76
1	F	240/263 (91%)	237 (99%)	3 (1%)	69	81
1	G	243/263 (92%)	243 (100%)	0	100	100
1	H	247/263 (94%)	245 (99%)	2 (1%)	81	90
All	All	1950/2104 (93%)	1930 (99%)	20 (1%)	76	86

5 of 20 residues with a non-rotameric sidechain are listed below:

Mol	Chain	Res	Type
1	D	198	LYS
1	D	265	MET
1	F	241	LYS
1	D	104	ASP
1	D	113	ASP

Some sidechains can be flipped to improve hydrogen bonding and reduce clashes. All (5) such sidechains are listed below:

Mol	Chain	Res	Type
1	A	193	HIS
1	C	126	HIS
1	D	32	HIS
1	D	161	ASN
1	E	193	HIS

4.3.3 RNA [i](#)

There are no RNA molecules in this entry.

4.4 Non-standard residues in protein, DNA, RNA chains [i](#)

There are no non-standard protein/DNA/RNA residues in this entry.

4.5 Carbohydrates [i](#)

There are no carbohydrates in this entry.

4.6 Ligand geometry [i](#)

Of 20 ligands modelled in this entry, 4 are monoatomic - leaving 16 for Mogul analysis.

In the following table, the Counts columns list the number of bonds (or angles) for which Mogul statistics could be retrieved, the number of bonds (or angles) that are observed in the model and the number of bonds (or angles) that are defined in the Chemical Component Dictionary. The Link column lists molecule types, if any, to which the group is linked. The Z score for a bond length (or angle) is the number of standard deviations the observed value is removed from the expected value. A bond length (or angle) with $|Z| > 2$ is considered an outlier worth inspection. RMSZ is the root-mean-square of all Z scores of the bond lengths (or angles).

Mol	Type	Chain	Res	Link	Bond lengths			Bond angles		
					Counts	RMSZ	# $ Z > 2$	Counts	RMSZ	# $ Z > 2$
3	SO4	B	294	-	4,4,4	0.11	0	6,6,6	0.17	0
2	NAD	E	292	-	42,48,48	0.89	2 (4%)	50,73,73	1.24	5 (10%)
3	SO4	G	293	-	4,4,4	0.12	0	6,6,6	0.26	0
3	SO4	B	293	-	4,4,4	0.11	0	6,6,6	0.26	0
3	SO4	F	293	-	4,4,4	0.17	0	6,6,6	0.20	0
3	SO4	A	294	-	4,4,4	0.15	0	6,6,6	0.09	0
2	NAD	G	292	-	42,48,48	0.88	2 (4%)	50,73,73	1.32	5 (10%)
3	SO4	B	295	-	4,4,4	0.13	0	6,6,6	0.06	0
2	NAD	H	292	-	42,48,48	0.88	1 (2%)	50,73,73	1.14	4 (8%)
3	SO4	H	294	-	4,4,4	0.17	0	6,6,6	0.16	0
2	NAD	D	292	-	42,48,48	0.90	3 (7%)	50,73,73	1.08	3 (6%)
2	NAD	A	292	-	42,48,48	0.84	2 (4%)	50,73,73	1.20	5 (10%)
2	NAD	F	292	-	42,48,48	0.86	3 (7%)	50,73,73	1.17	4 (8%)
2	NAD	C	292	-	42,48,48	0.89	2 (4%)	50,73,73	1.26	4 (8%)
3	SO4	A	293	-	4,4,4	0.18	0	6,6,6	0.26	0
2	NAD	B	292	-	42,48,48	0.81	1 (2%)	50,73,73	1.22	5 (10%)

In the following table, the Chirals column lists the number of chiral outliers, the number of chiral centers analysed, the number of these observed in the model and the number defined in the Chemical Component Dictionary. Similar counts are reported in the Torsion and Rings columns.

'-' means no outliers of that kind were identified.

Mol	Type	Chain	Res	Link	Chirals	Torsions	Rings
2	NAD	E	292	-	-	5/26/62/62	0/5/5/5
2	NAD	H	292	-	-	3/26/62/62	0/5/5/5
2	NAD	G	292	-	-	5/26/62/62	0/5/5/5
2	NAD	D	292	-	-	3/26/62/62	0/5/5/5
2	NAD	A	292	-	-	5/26/62/62	0/5/5/5
2	NAD	F	292	-	-	3/26/62/62	0/5/5/5
2	NAD	C	292	-	-	5/26/62/62	0/5/5/5
2	NAD	B	292	-	-	4/26/62/62	0/5/5/5

The worst 5 of 16 bond length outliers are listed below:

Mol	Chain	Res	Type	Atoms	Z	Observed(Å)	Ideal(Å)
2	E	292	NAD	C5A-C4A	2.52	1.47	1.40
2	D	292	NAD	O4D-C1D	2.46	1.44	1.41
2	D	292	NAD	O4B-C1B	2.44	1.44	1.41
2	A	292	NAD	C5A-C4A	2.38	1.47	1.40
2	D	292	NAD	C5A-C4A	2.37	1.47	1.40

The worst 5 of 35 bond angle outliers are listed below:

Mol	Chain	Res	Type	Atoms	Z	Observed(°)	Ideal(°)
2	A	292	NAD	N3A-C2A-N1A	-4.62	121.46	128.68
2	G	292	NAD	N3A-C2A-N1A	-4.53	121.60	128.68
2	F	292	NAD	N3A-C2A-N1A	-4.51	121.63	128.68
2	B	292	NAD	N3A-C2A-N1A	-4.39	121.82	128.68
2	D	292	NAD	N3A-C2A-N1A	-4.13	122.22	128.68

There are no chirality outliers.

5 of 33 torsion outliers are listed below:

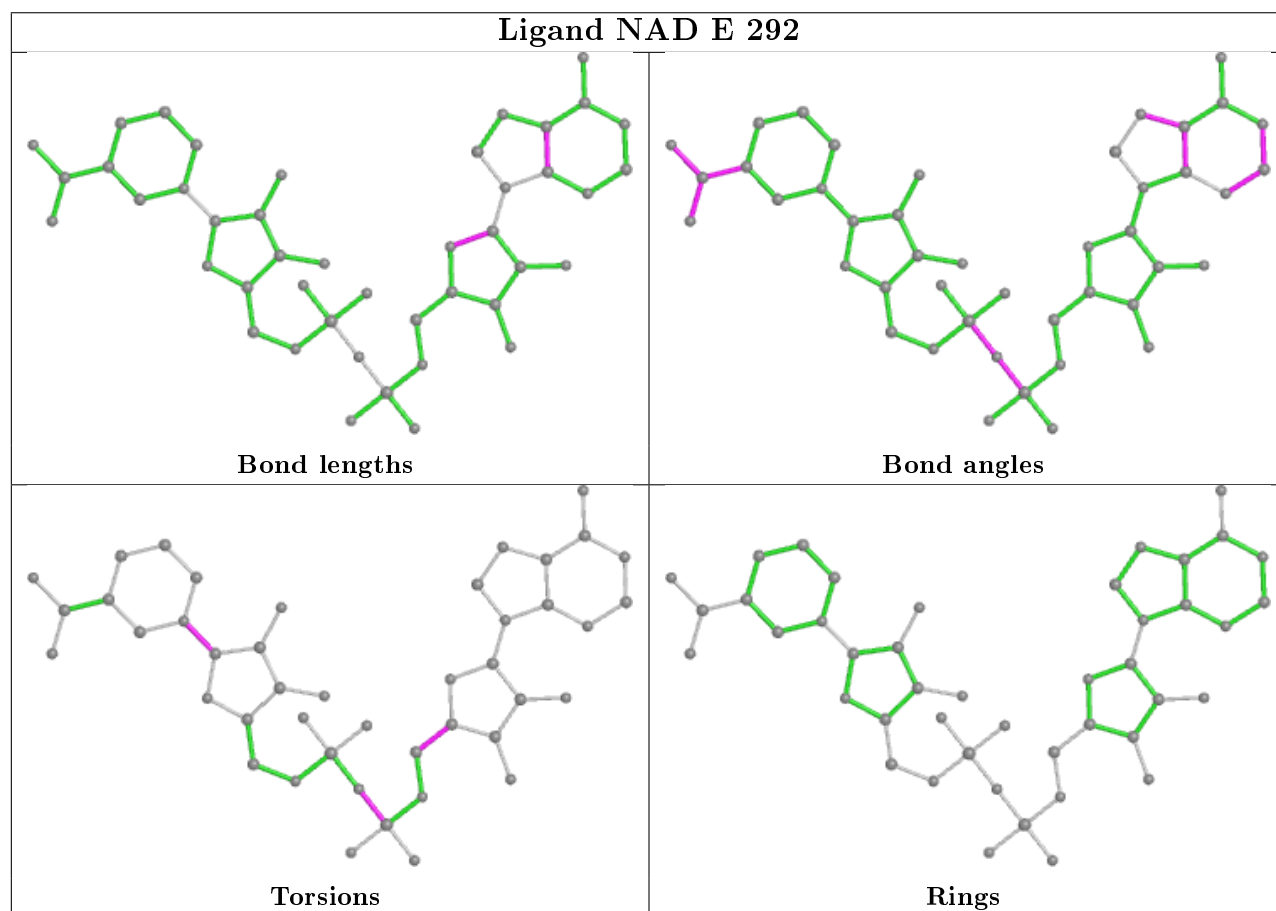
Mol	Chain	Res	Type	Atoms
2	E	292	NAD	O4D-C1D-N1N-C6N
2	H	292	NAD	O4D-C1D-N1N-C6N
2	G	292	NAD	O4D-C1D-N1N-C6N
2	A	292	NAD	O4D-C1D-N1N-C6N
2	F	292	NAD	O4D-C1D-N1N-C6N

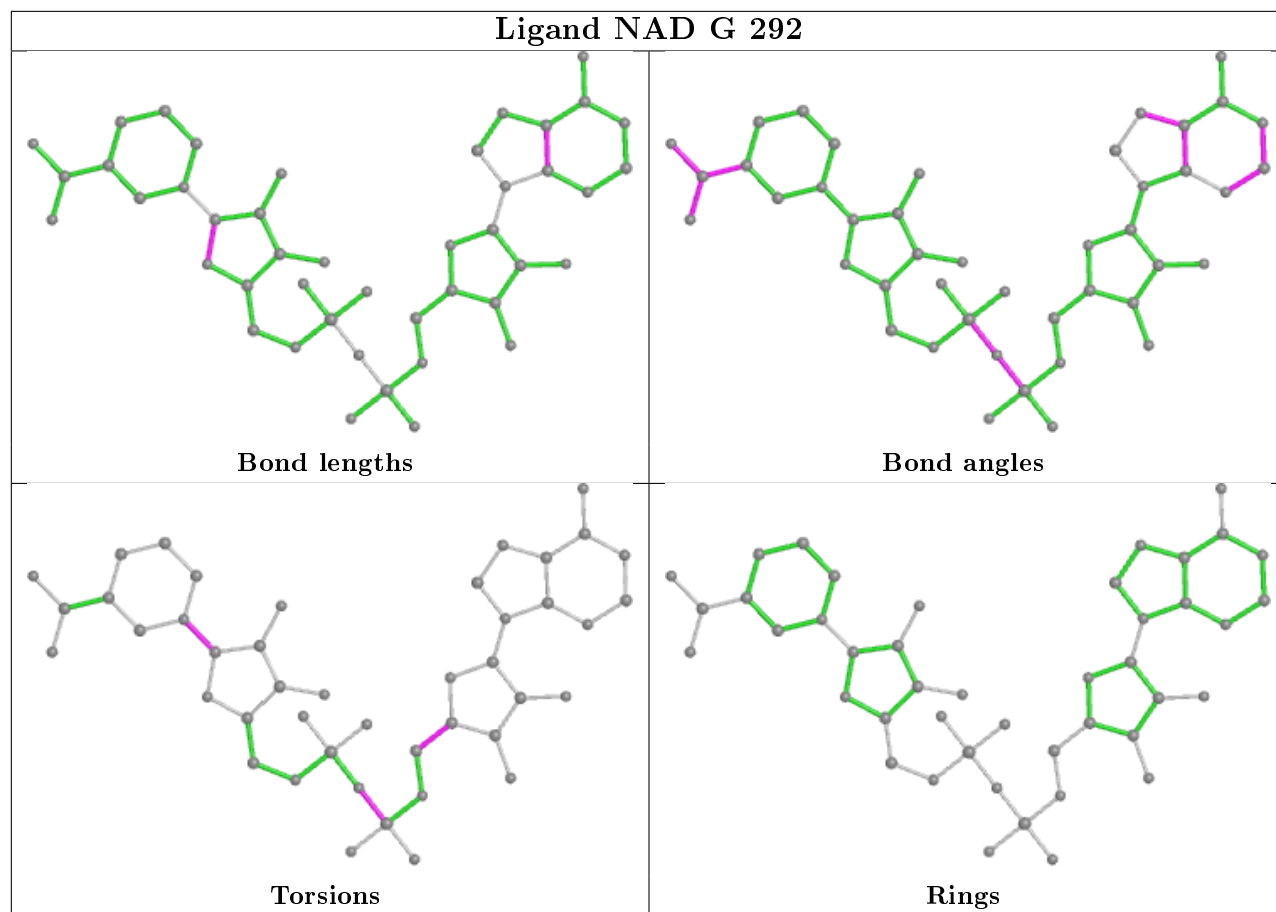
There are no ring outliers.

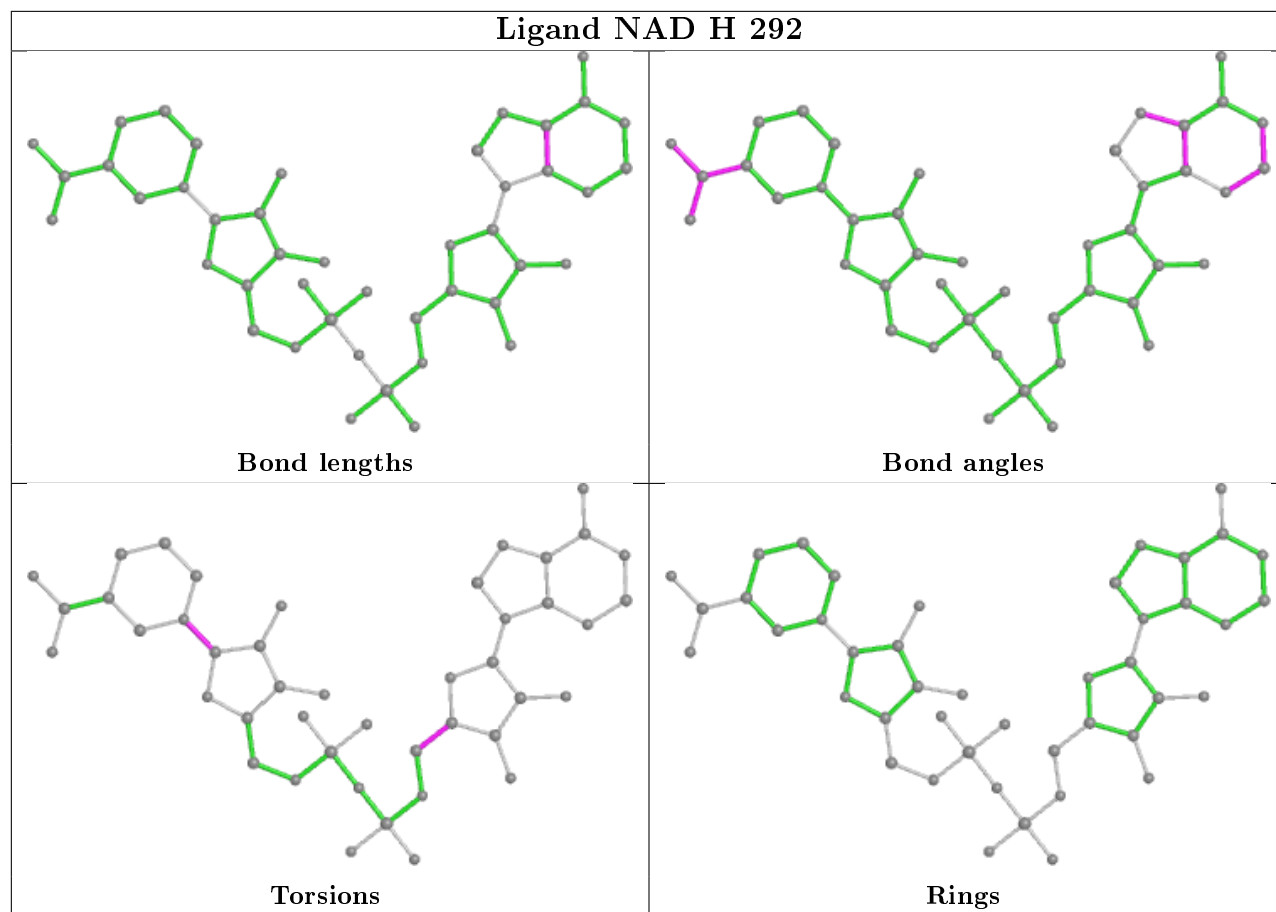
2 monomers are involved in 3 short contacts:

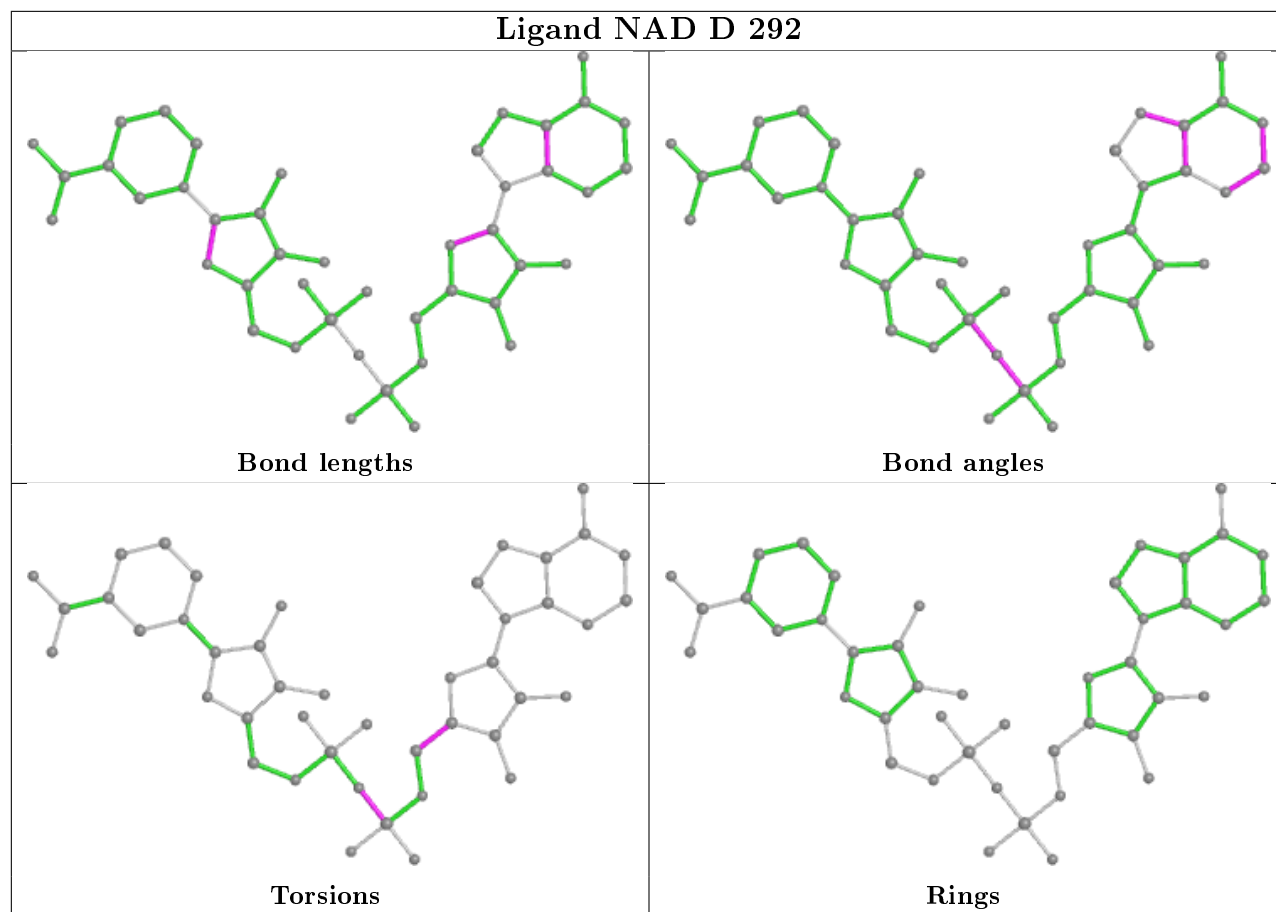
Mol	Chain	Res	Type	Clashes	Symm-Clashes
3	G	293	SO4	1	0
2	A	292	NAD	2	0

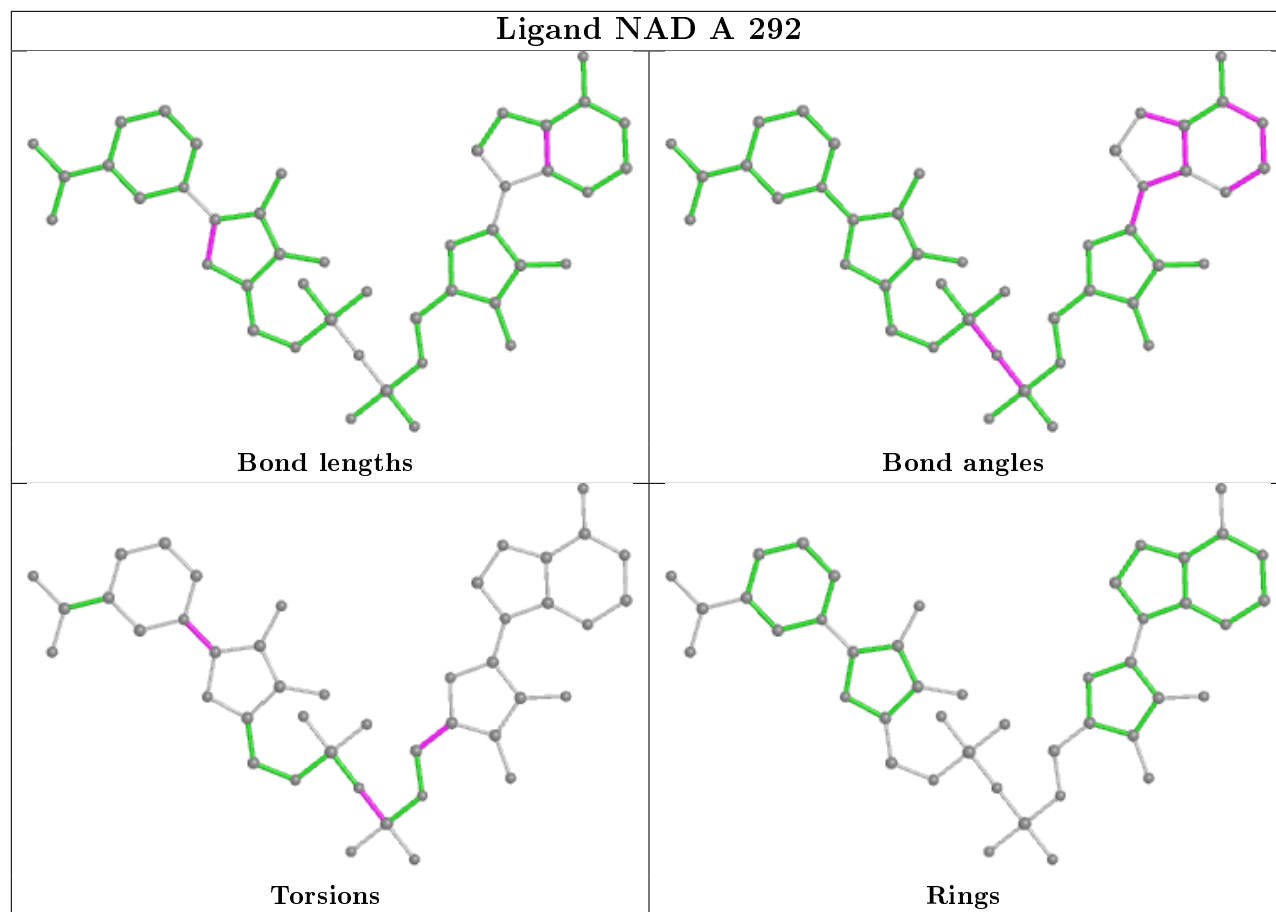
The following is a two-dimensional graphical depiction of Mogul quality analysis of bond lengths, bond angles, torsion angles, and ring geometry for all instances of the Ligand of Interest. In addition, ligands with molecular weight > 250 and outliers as shown on the validation Tables will also be included. For torsion angles, if less than 5% of the Mogul distribution of torsion angles is within 10 degrees of the torsion angle in question, then that torsion angle is considered an outlier. Any bond that is central to one or more torsion angles identified as an outlier by Mogul will be highlighted in the graph. For rings, the root-mean-square deviation (RMSD) between the ring in question and similar rings identified by Mogul is calculated over all ring torsion angles. If the average RMSD is greater than 60 degrees and the minimal RMSD between the ring in question and any Mogul-identified rings is also greater than 60 degrees, then that ring is considered an outlier. The outliers are highlighted in purple. The color gray indicates Mogul did not find sufficient equivalents in the CSD to analyse the geometry.

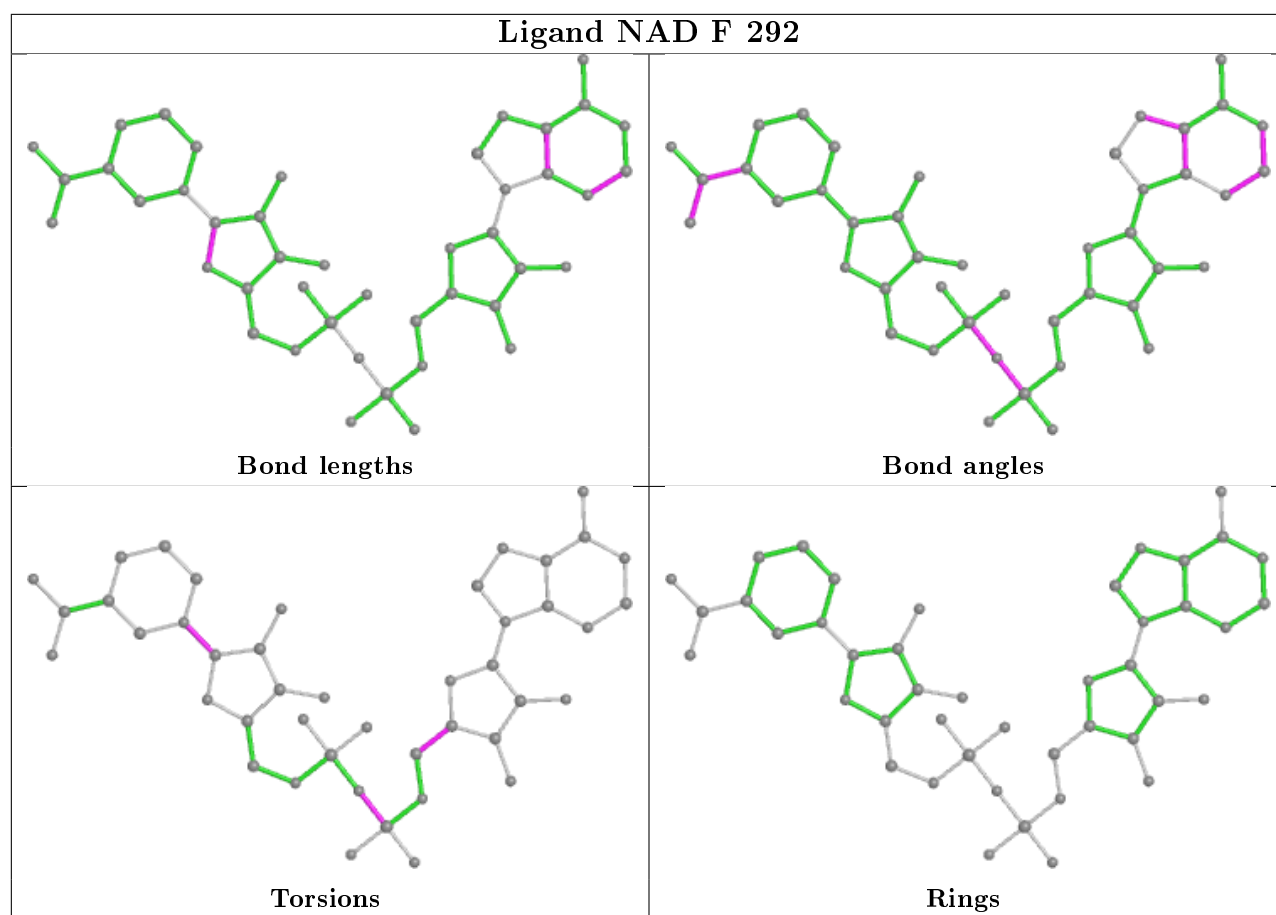


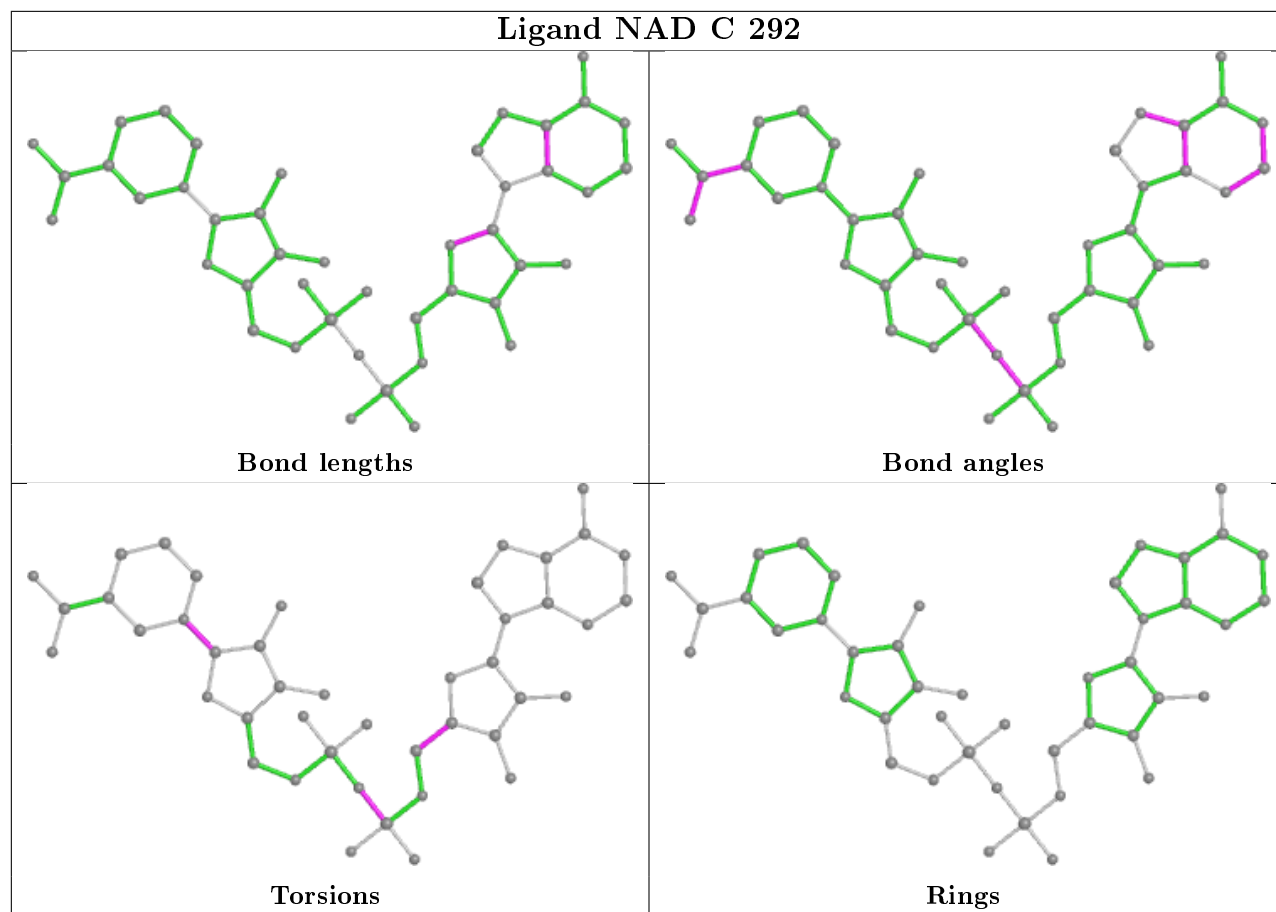


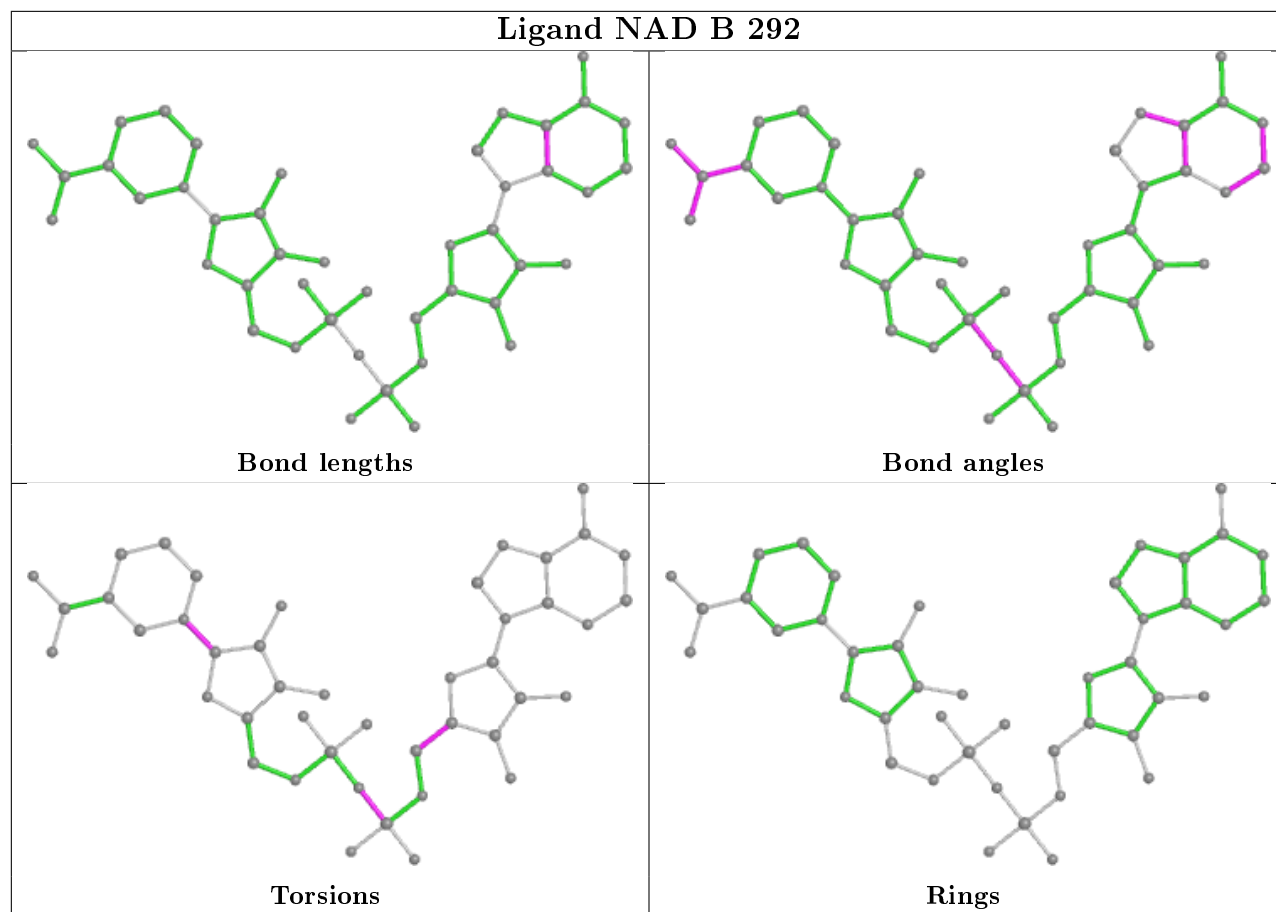












4.7 Other polymers [i](#)

There are no such residues in this entry.

4.8 Polymer linkage issues [i](#)

There are no chain breaks in this entry.

5 Fit of model and data ⓘ

5.1 Protein, DNA and RNA chains ⓘ

In the following table, the column labelled ‘#RSRZ> 2’ contains the number (and percentage) of RSRZ outliers, followed by percent RSRZ outliers for the chain as percentile scores relative to all X-ray entries and entries of similar resolution. The OWAB column contains the minimum, median, 95th percentile and maximum values of the occupancy-weighted average B-factor per residue. The column labelled ‘Q< 0.9’ lists the number of (and percentage) of residues with an average occupancy less than 0.9.

Mol	Chain	Analysed	<RSRZ>	#RSRZ>2	OWAB(Å ²)	Q<0.9
1	A	291/315 (92%)	-0.32	2 (0%) 87 86	23, 38, 60, 70	0
1	B	290/315 (92%)	-0.34	2 (0%) 87 86	24, 39, 58, 79	0
1	C	287/315 (91%)	-0.36	3 (1%) 82 81	23, 36, 58, 73	0
1	D	289/315 (91%)	-0.06	7 (2%) 59 56	26, 46, 87, 104	0
1	E	289/315 (91%)	-0.50	4 (1%) 75 73	24, 36, 51, 73	0
1	F	287/315 (91%)	-0.39	2 (0%) 87 86	25, 36, 49, 67	0
1	G	291/315 (92%)	-0.17	3 (1%) 82 81	27, 42, 68, 77	0
1	H	291/315 (92%)	-0.37	6 (2%) 63 61	25, 35, 52, 83	0
All	All	2315/2520 (91%)	-0.31	29 (1%) 77 75	23, 38, 65, 104	0

The worst 5 of 29 RSRZ outliers are listed below:

Mol	Chain	Res	Type	RSRZ
1	C	291	PHE	6.4
1	B	2	THR	5.4
1	G	291	PHE	4.7
1	H	291	PHE	3.6
1	C	5	ILE	3.6

5.2 Non-standard residues in protein, DNA, RNA chains ⓘ

There are no non-standard protein/DNA/RNA residues in this entry.

5.3 Carbohydrates ⓘ

There are no carbohydrates in this entry.

5.4 Ligands ⓘ

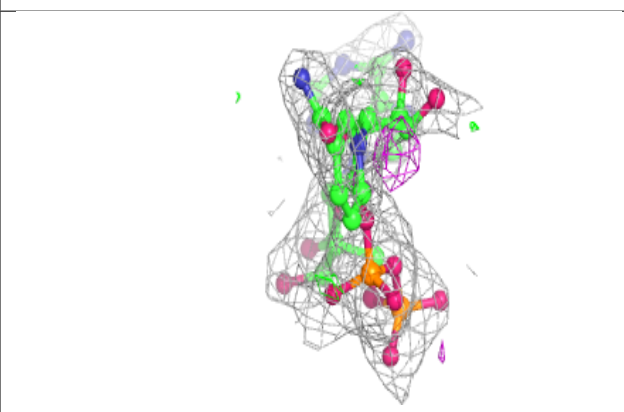
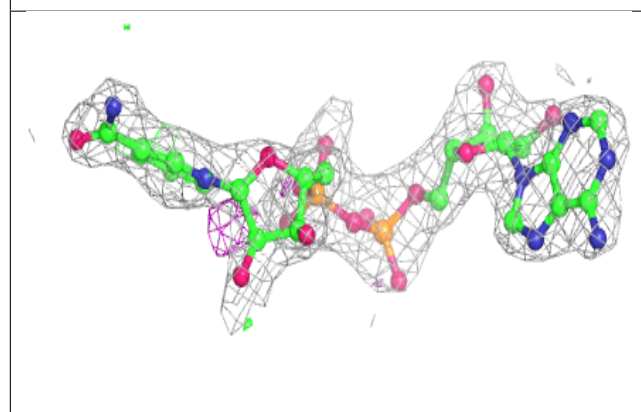
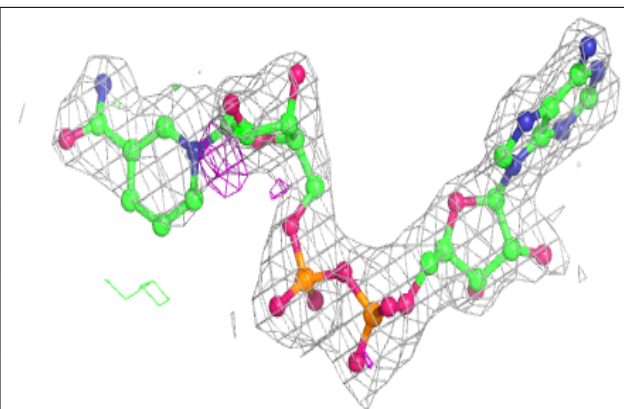
In the following table, the Atoms column lists the number of modelled atoms in the group and the number defined in the chemical component dictionary. The B-factors column lists the minimum, median, 95th percentile and maximum values of B factors of atoms in the group. The column labelled 'Q<0.9' lists the number of atoms with occupancy less than 0.9.

Mol	Type	Chain	Res	Atoms	RSCC	RSR	B-factors(Å ²)	Q<0.9
4	CL	E	293	1/1	0.82	0.10	51,51,51,51	1
3	SO4	A	294	5/5	0.86	0.26	107,107,108,109	0
2	NAD	A	292	44/44	0.90	0.16	49,55,62,64	0
4	CL	C	294	1/1	0.92	0.12	47,47,47,47	1
3	SO4	B	293	5/5	0.92	0.14	70,71,73,76	0
3	SO4	B	295	5/5	0.93	0.17	89,89,90,91	0
3	SO4	F	293	5/5	0.93	0.25	74,76,77,78	0
2	NAD	D	292	44/44	0.93	0.12	39,47,68,69	0
3	SO4	H	294	5/5	0.93	0.14	44,45,47,49	5
3	SO4	A	293	5/5	0.94	0.11	69,71,72,73	0
2	NAD	G	292	44/44	0.95	0.10	33,43,53,54	0
2	NAD	F	292	44/44	0.95	0.10	39,45,51,51	0
4	CL	H	293	1/1	0.95	0.24	48,48,48,48	1
4	CL	C	293	1/1	0.95	0.12	70,70,70,70	0
2	NAD	B	292	44/44	0.95	0.10	36,42,47,48	0
3	SO4	B	294	5/5	0.96	0.20	76,77,77,81	0
2	NAD	H	292	44/44	0.96	0.10	33,38,42,45	0
2	NAD	E	292	44/44	0.97	0.07	25,33,38,39	0
3	SO4	G	293	5/5	0.97	0.14	54,60,63,64	0
2	NAD	C	292	44/44	0.97	0.08	27,33,37,40	0

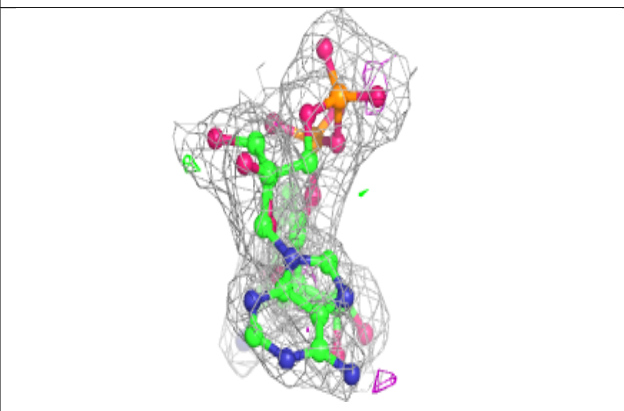
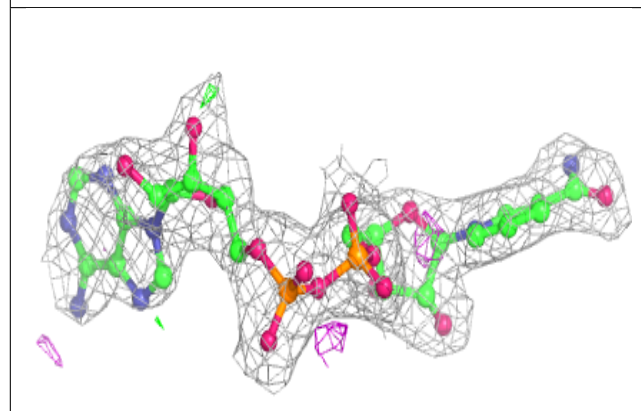
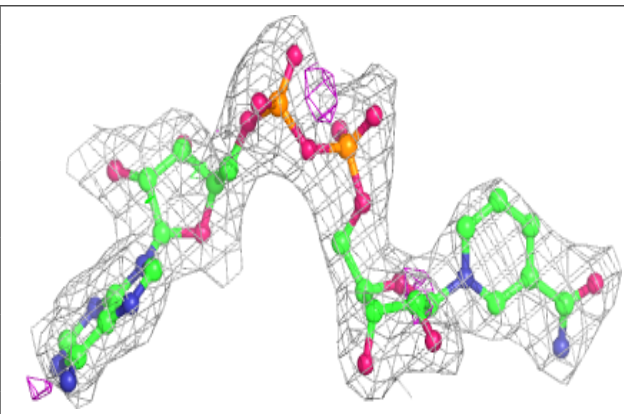
The following is a graphical depiction of the model fit to experimental electron density of all instances of the Ligand of Interest. In addition, ligands with molecular weight > 250 and outliers as shown on the geometry validation Tables will also be included. Each fit is shown from different orientation to approximate a three-dimensional view.

Electron density around NAD A 292:

$2mF_o-DF_c$ (at 0.7 rmsd) in gray
 mF_o-DF_c (at 3 rmsd) in purple (negative)
and green (positive)

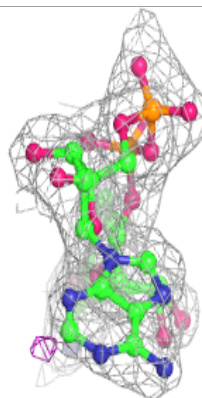
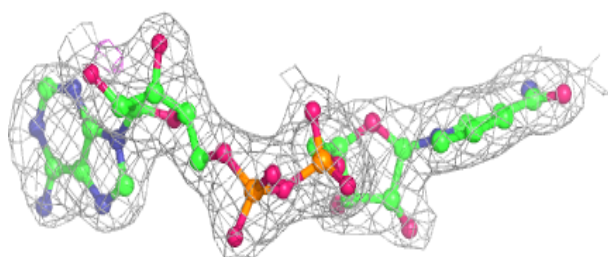
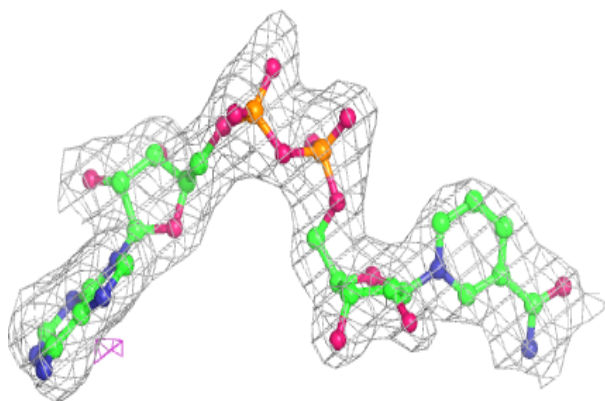
**Electron density around NAD D 292:**

$2mF_o-DF_c$ (at 0.7 rmsd) in gray
 mF_o-DF_c (at 3 rmsd) in purple (negative)
and green (positive)

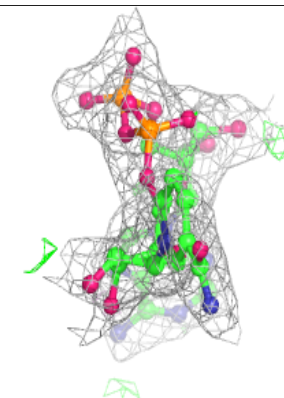
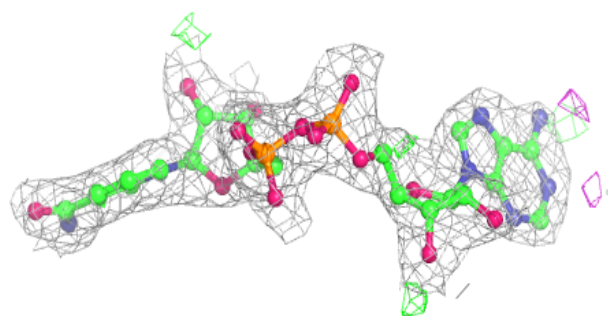
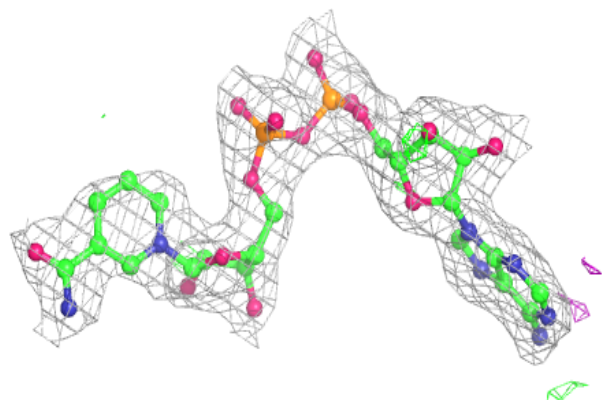


Electron density around NAD G 292:

$2mF_o-DF_c$ (at 0.7 rmsd) in gray
 mF_o-DF_c (at 3 rmsd) in purple (negative)
and green (positive)

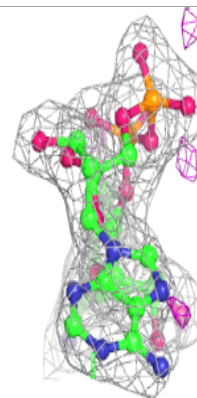
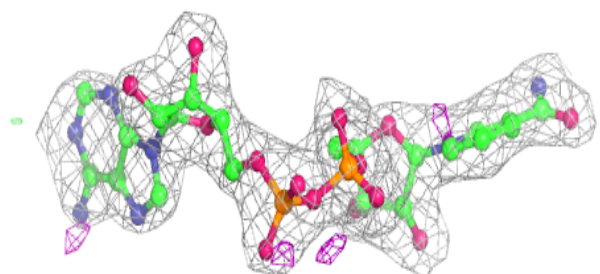
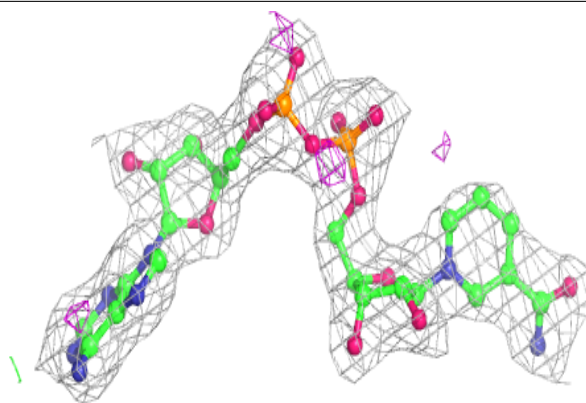
**Electron density around NAD F 292:**

$2mF_o-DF_c$ (at 0.7 rmsd) in gray
 mF_o-DF_c (at 3 rmsd) in purple (negative)
and green (positive)

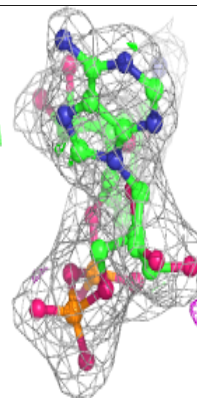
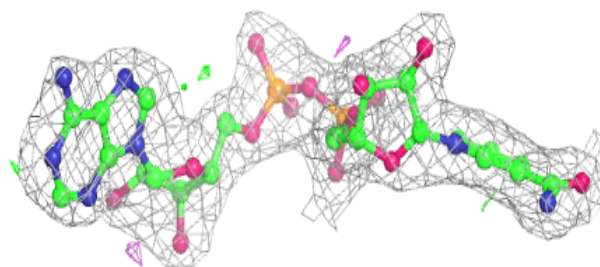
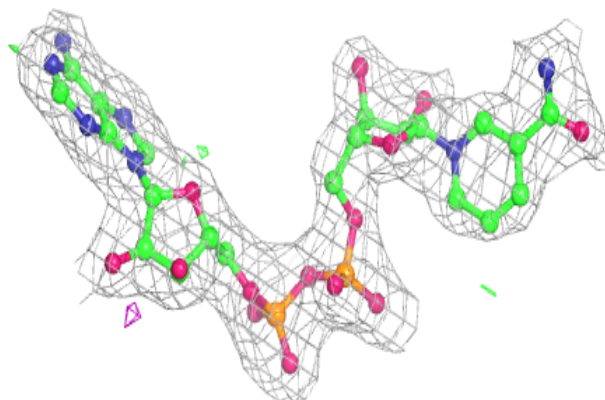


Electron density around NAD B 292:

$2mF_o-DF_c$ (at 0.7 rmsd) in gray
 mF_o-DF_c (at 3 rmsd) in purple (negative)
and green (positive)

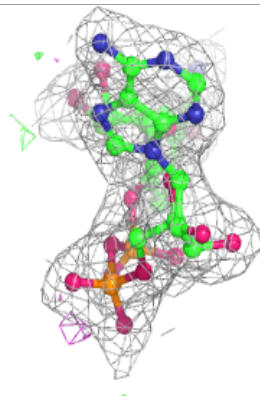
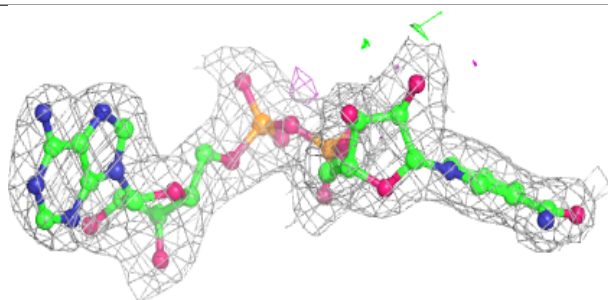
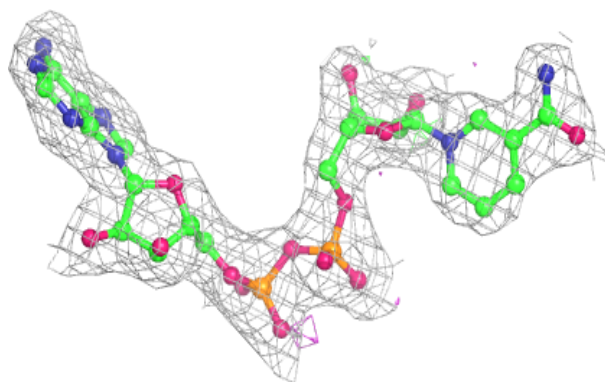
**Electron density around NAD H 292:**

$2mF_o-DF_c$ (at 0.7 rmsd) in gray
 mF_o-DF_c (at 3 rmsd) in purple (negative)
and green (positive)

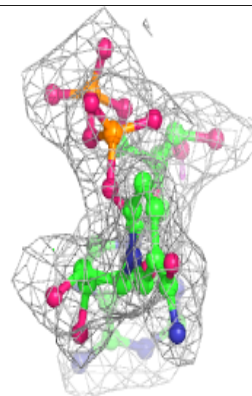
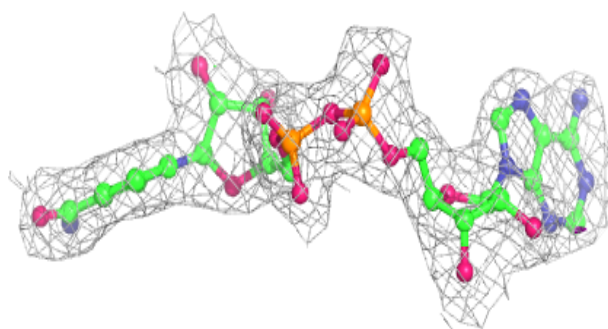
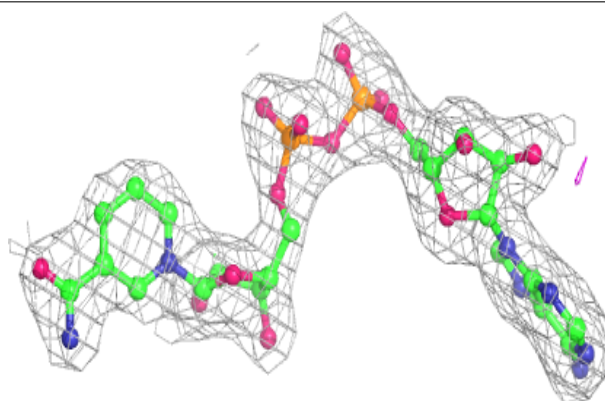


Electron density around NAD E 292:

$2mF_o-DF_c$ (at 0.7 rmsd) in gray
 mF_o-DF_c (at 3 rmsd) in purple (negative)
and green (positive)

**Electron density around NAD C 292:**

$2mF_o-DF_c$ (at 0.7 rmsd) in gray
 mF_o-DF_c (at 3 rmsd) in purple (negative)
and green (positive)



5.5 Other polymers [i](#)

There are no such residues in this entry.