



# Full wwPDB X-ray Structure Validation Report ⓘ

May 16, 2020 – 07:51 am BST

PDB ID : 5TS2  
Title : Crystal structure of a phosphopantetheine adenylyltransferase (CoaD, PPAT) from *Pseudomonas aeruginosa* bound to dephospho coenzyme A  
Authors : Seattle Structural Genomics Center for Infectious Disease (SSGCID)  
Deposited on : 2016-10-27  
Resolution : 2.30 Å(reported)

This is a Full wwPDB X-ray Structure Validation Report for a publicly released PDB entry.

We welcome your comments at [validation@mail.wwpdb.org](mailto:validation@mail.wwpdb.org)

A user guide is available at

<https://www.wwpdb.org/validation/2017/XrayValidationReportHelp>

with specific help available everywhere you see the ⓘ symbol.

---

The following versions of software and data (see [references ⓘ](#)) were used in the production of this report:

MolProbity : 4.02b-467  
Mogul : 1.8.5 (274361), CSD as541be (2020)  
Xtriage (Phenix) : 1.13  
EDS : 2.11  
buster-report : 1.1.7 (2018)  
Percentile statistics : 20191225.v01 (using entries in the PDB archive December 25th 2019)  
Refmac : 5.8.0158  
CCP4 : 7.0.044 (Gargrove)  
Ideal geometry (proteins) : Engh & Huber (2001)  
Ideal geometry (DNA, RNA) : Parkinson et al. (1996)  
Validation Pipeline (wwPDB-VP) : 2.11

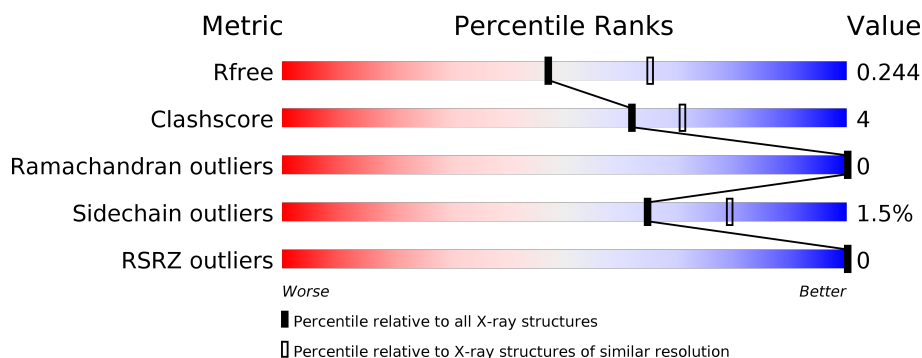
# 1 Overall quality at a glance

The following experimental techniques were used to determine the structure:

*X-RAY DIFFRACTION*

The reported resolution of this entry is 2.30 Å.

Percentile scores (ranging between 0-100) for global validation metrics of the entry are shown in the following graphic. The table shows the number of entries on which the scores are based.



Metric	Whole archive (#Entries)	Similar resolution (#Entries, resolution range(Å))
$R_{free}$	130704	5042 (2.30-2.30)
Clashscore	141614	5643 (2.30-2.30)
Ramachandran outliers	138981	5575 (2.30-2.30)
Sidechain outliers	138945	5575 (2.30-2.30)
RSRZ outliers	127900	4938 (2.30-2.30)

The table below summarises the geometric issues observed across the polymeric chains and their fit to the electron density. The red, orange, yellow and green segments on the lower bar indicate the fraction of residues that contain outliers for  $\geq 3$ , 2, 1 and 0 types of geometric quality criteria respectively. A grey segment represents the fraction of residues that are not modelled. The numeric value for each fraction is indicated below the corresponding segment, with a dot representing fractions  $\leq 5\%$ . The upper red bar (where present) indicates the fraction of residues that have poor fit to the electron density. The numeric value is given above the bar.

Mol	Chain	Length	Quality of chain
1	A	167	<div> <div>87%</div> <div>12%</div> <div>.</div> </div>
1	B	167	<div> <div>88%</div> <div>7%</div> <div>5%</div> </div>
1	C	167	<div> <div>86%</div> <div>13%</div> <div>.</div> </div>
1	D	167	<div> <div>84%</div> <div>11%</div> <div>5%</div> </div>
1	E	167	<div> <div>90%</div> <div>8%</div> <div>.</div> </div>
1	F	167	<div> <div>85%</div> <div>10%</div> <div>5%</div> </div>

## 2 Entry composition

There are 5 unique types of molecules in this entry. The entry contains 7991 atoms, of which 0 are hydrogens and 0 are deuteriums.

In the tables below, the ZeroOcc column contains the number of atoms modelled with zero occupancy, the AltConf column contains the number of residues with at least one atom in alternate conformation and the Trace column contains the number of residues modelled with at most 2 atoms.

- Molecule 1 is a protein called Phosphopantetheine adenylyltransferase.

Mol	Chain	Residues	Atoms					ZeroOcc	AltConf	Trace
1	A	165	Total	C	N	O	S	0	1	0
			1288	827	232	226	3			
1	B	158	Total	C	N	O	S	0	2	0
			1227	790	213	221	3			
1	C	165	Total	C	N	O	S	0	0	0
			1283	823	231	226	3			
1	D	159	Total	C	N	O	S	0	1	0
			1232	793	212	224	3			
1	E	165	Total	C	N	O	S	0	0	0
			1274	818	228	225	3			
1	F	159	Total	C	N	O	S	0	0	0
			1221	786	214	219	2			

There are 48 discrepancies between the modelled and reference sequences:

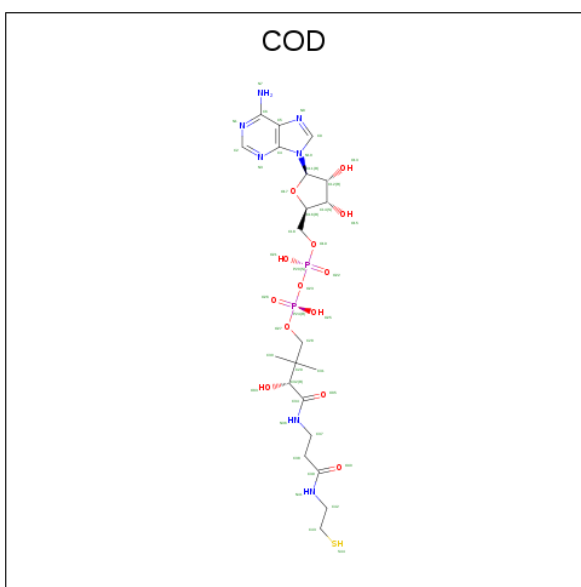
Chain	Residue	Modelled	Actual	Comment	Reference
A	-7	MET	-	initiating methionine	UNP B7V2S6
A	-6	ALA	-	expression tag	UNP B7V2S6
A	-5	HIS	-	expression tag	UNP B7V2S6
A	-4	HIS	-	expression tag	UNP B7V2S6
A	-3	HIS	-	expression tag	UNP B7V2S6
A	-2	HIS	-	expression tag	UNP B7V2S6
A	-1	HIS	-	expression tag	UNP B7V2S6
A	0	HIS	-	expression tag	UNP B7V2S6
B	-7	MET	-	initiating methionine	UNP B7V2S6
B	-6	ALA	-	expression tag	UNP B7V2S6
B	-5	HIS	-	expression tag	UNP B7V2S6
B	-4	HIS	-	expression tag	UNP B7V2S6
B	-3	HIS	-	expression tag	UNP B7V2S6
B	-2	HIS	-	expression tag	UNP B7V2S6
B	-1	HIS	-	expression tag	UNP B7V2S6
B	0	HIS	-	expression tag	UNP B7V2S6
C	-7	MET	-	initiating methionine	UNP B7V2S6

*Continued on next page...*

*Continued from previous page...*

Chain	Residue	Modelled	Actual	Comment	Reference
C	-6	ALA	-	expression tag	UNP B7V2S6
C	-5	HIS	-	expression tag	UNP B7V2S6
C	-4	HIS	-	expression tag	UNP B7V2S6
C	-3	HIS	-	expression tag	UNP B7V2S6
C	-2	HIS	-	expression tag	UNP B7V2S6
C	-1	HIS	-	expression tag	UNP B7V2S6
C	0	HIS	-	expression tag	UNP B7V2S6
D	-7	MET	-	initiating methionine	UNP B7V2S6
D	-6	ALA	-	expression tag	UNP B7V2S6
D	-5	HIS	-	expression tag	UNP B7V2S6
D	-4	HIS	-	expression tag	UNP B7V2S6
D	-3	HIS	-	expression tag	UNP B7V2S6
D	-2	HIS	-	expression tag	UNP B7V2S6
D	-1	HIS	-	expression tag	UNP B7V2S6
D	0	HIS	-	expression tag	UNP B7V2S6
E	-7	MET	-	initiating methionine	UNP B7V2S6
E	-6	ALA	-	expression tag	UNP B7V2S6
E	-5	HIS	-	expression tag	UNP B7V2S6
E	-4	HIS	-	expression tag	UNP B7V2S6
E	-3	HIS	-	expression tag	UNP B7V2S6
E	-2	HIS	-	expression tag	UNP B7V2S6
E	-1	HIS	-	expression tag	UNP B7V2S6
E	0	HIS	-	expression tag	UNP B7V2S6
F	-7	MET	-	initiating methionine	UNP B7V2S6
F	-6	ALA	-	expression tag	UNP B7V2S6
F	-5	HIS	-	expression tag	UNP B7V2S6
F	-4	HIS	-	expression tag	UNP B7V2S6
F	-3	HIS	-	expression tag	UNP B7V2S6
F	-2	HIS	-	expression tag	UNP B7V2S6
F	-1	HIS	-	expression tag	UNP B7V2S6
F	0	HIS	-	expression tag	UNP B7V2S6

- Molecule 2 is DEPHOSPHO COENZYME A (three-letter code: COD) (formula:  $C_{21}H_{35}N_7O_{13}P_2S$ ).



Mol	Chain	Residues	Atoms						ZeroOcc	AltConf
2	A	1	Total 44	C 21	N 7	O 13	P 2	S 1	0	0
2	B	1	Total 44	C 21	N 7	O 13	P 2	S 1	0	0
2	C	1	Total 44	C 21	N 7	O 13	P 2	S 1	0	0
2	D	1	Total 44	C 21	N 7	O 13	P 2	S 1	0	0
2	E	1	Total 44	C 21	N 7	O 13	P 2	S 1	0	0
2	F	1	Total 44	C 21	N 7	O 13	P 2	S 1	0	0

- Molecule 3 is CALCIUM ION (three-letter code: CA) (formula: Ca).

Mol	Chain	Residues	Atoms		ZeroOcc	AltConf
3	A	1	Total	Ca	0	0
			1	1		
3	E	1	Total	Ca	0	0
			1	1		

- Molecule 4 is CHLORIDE ION (three-letter code: CL) (formula: Cl).

Mol	Chain	Residues	Atoms		ZeroOcc	AltConf
4	D	2	Total	Cl	0	0
			2	2		

*Continued on next page...*

*Continued from previous page...*

Mol	Chain	Residues	Atoms		ZeroOcc	AltConf
4	E	1	Total 1	Cl 1	0	0
4	B	2	Total 2	Cl 2	0	0
4	C	3	Total 3	Cl 3	0	0
4	A	1	Total 1	Cl 1	0	0
4	F	2	Total 2	Cl 2	0	0


- Molecule 5 is water.

Mol	Chain	Residues	Atoms		ZeroOcc	AltConf
5	A	36	Total 36	O 36	0	0
5	B	21	Total 21	O 21	0	0
5	C	28	Total 28	O 28	0	0
5	D	44	Total 44	O 44	0	0
5	E	30	Total 30	O 30	0	0
5	F	30	Total 30	O 30	0	0

### 3 Residue-property plots [i](#)

These plots are drawn for all protein, RNA and DNA chains in the entry. The first graphic for a chain summarises the proportions of the various outlier classes displayed in the second graphic. The second graphic shows the sequence view annotated by issues in geometry and electron density. Residues are color-coded according to the number of geometric quality criteria for which they contain at least one outlier: green = 0, yellow = 1, orange = 2 and red = 3 or more. A red dot above a residue indicates a poor fit to the electron density ( $RSRZ > 2$ ). Stretches of 2 or more consecutive residues without any outlier are shown as a green connector. Residues present in the sample, but not in the model, are shown in grey.

- Molecule 1: Phosphopantetheine adenylyltransferase

Chain A: 




- Molecule 1: Phosphopantetheine adenylyltransferase

Chain B: 




- Molecule 1: Phosphopantetheine adenylyltransferase

Chain C: 



- Molecule 1: Phosphopantetheine adenylyltransferase

Chain D: 




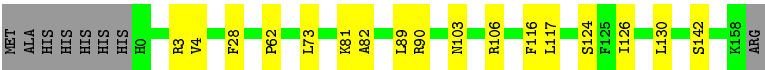
- Molecule 1: Phosphopantetheine adenylyltransferase

Chain E: 



- Molecule 1: Phosphopantetheine adenylyltransferase

Chain F: 





## 4 Data and refinement statistics

Property	Value	Source
Space group	P 21 21 21	Depositor
Cell constants a, b, c, $\alpha$ , $\beta$ , $\gamma$	98.38Å 101.35Å 105.71Å 90.00° 90.00° 90.00°	Depositor
Resolution (Å)	46.87 – 2.30 46.86 – 2.30	Depositor EDS
% Data completeness (in resolution range)	97.5 (46.87-2.30) 97.5 (46.86-2.30)	Depositor EDS
$R_{merge}$	0.06	Depositor
$R_{sym}$	(Not available)	Depositor
$\langle I/\sigma(I) \rangle$ <sup>1</sup>	2.78 (at 2.29Å)	Xtriage
Refinement program	PHENIX	Depositor
R, $R_{free}$	0.180 , 0.244 0.180 , 0.244	Depositor DCC
$R_{free}$ test set	2159 reflections (4.65%)	wwPDB-VP
Wilson B-factor (Å <sup>2</sup> )	43.2	Xtriage
Anisotropy	0.277	Xtriage
Bulk solvent $k_{sol}$ (e/Å <sup>3</sup> ), $B_{sol}$ (Å <sup>2</sup> )	0.32 , 38.4	EDS
L-test for twinning <sup>2</sup>	$\langle  L  \rangle = 0.48$ , $\langle L^2 \rangle = 0.32$	Xtriage
Estimated twinning fraction	0.022 for k,h,-l	Xtriage
$F_o, F_c$ correlation	0.95	EDS
Total number of atoms	7991	wwPDB-VP
Average B, all atoms (Å <sup>2</sup> )	51.0	wwPDB-VP

Xtriage's analysis on translational NCS is as follows: *The largest off-origin peak in the Patterson function is 3.09% of the height of the origin peak. No significant pseudotranslation is detected.*

<sup>1</sup>Intensities estimated from amplitudes.

<sup>2</sup>Theoretical values of  $\langle |L| \rangle$ ,  $\langle L^2 \rangle$  for acentric reflections are 0.5, 0.333 respectively for untwinned datasets, and 0.375, 0.2 for perfectly twinned datasets.

## 5 Model quality [i](#)

### 5.1 Standard geometry [i](#)

Bond lengths and bond angles in the following residue types are not validated in this section: CA, COD, CL

The Z score for a bond length (or angle) is the number of standard deviations the observed value is removed from the expected value. A bond length (or angle) with  $|Z| > 5$  is considered an outlier worth inspection. RMSZ is the root-mean-square of all Z scores of the bond lengths (or angles).

Mol	Chain	Bond lengths		Bond angles	
		RMSZ	$\# Z  > 5$	RMSZ	$\# Z  > 5$
1	A	0.38	0/1325	0.55	0/1801
1	B	0.40	0/1261	0.54	0/1716
1	C	0.41	0/1316	0.54	0/1787
1	D	0.44	0/1262	0.60	0/1714
1	E	0.38	0/1307	0.55	0/1778
1	F	0.38	0/1249	0.55	0/1697
All	All	0.40	0/7720	0.55	0/10493

There are no bond length outliers.

There are no bond angle outliers.

There are no chirality outliers.

There are no planarity outliers.

### 5.2 Too-close contacts [i](#)

In the following table, the Non-H and H(model) columns list the number of non-hydrogen atoms and hydrogen atoms in the chain respectively. The H(added) column lists the number of hydrogen atoms added and optimized by MolProbity. The Clashes column lists the number of clashes within the asymmetric unit, whereas Symm-Clashes lists symmetry related clashes.

Mol	Chain	Non-H	H(model)	H(added)	Clashes	Symm-Clashes
1	A	1288	0	1259	12	0
1	B	1227	0	1208	8	0
1	C	1283	0	1256	15	0
1	D	1232	0	1219	12	0
1	E	1274	0	1237	9	0
1	F	1221	0	1203	16	0
2	A	44	0	33	2	0

*Continued on next page...*

*Continued from previous page...*

Mol	Chain	Non-H	H(model)	H(added)	Clashes	Symm-Clashes
2	B	44	0	33	5	0
2	C	44	0	32	4	0
2	D	44	0	32	3	0
2	E	44	0	32	3	0
2	F	44	0	32	2	0
3	A	1	0	0	0	0
3	E	1	0	0	0	0
4	A	1	0	0	0	0
4	B	2	0	0	0	0
4	C	3	0	0	0	0
4	D	2	0	0	0	0
4	E	1	0	0	0	0
4	F	2	0	0	0	0
5	A	36	0	0	0	0
5	B	21	0	0	0	0
5	C	28	0	0	0	0
5	D	44	0	0	0	0
5	E	30	0	0	0	0
5	F	30	0	0	2	0
All	All	7991	0	7576	67	0

The all-atom clashscore is defined as the number of clashes found per 1000 atoms (including hydrogen atoms). The all-atom clashscore for this structure is 4.

All (67) close contacts within the same asymmetric unit are listed below, sorted by their clash magnitude.

Atom-1	Atom-2	Interatomic distance (Å)	Clash overlap (Å)
1:A:3:ARG:NH2	1:A:80:GLN:O	2.19	0.76
1:C:-5:HIS:HB2	1:F:62:PRO:HG3	1.71	0.72
1:D:90:ARG:HD2	1:D:124:SER:O	1.99	0.61
1:E:90:ARG:HD2	1:E:124:SER:O	2.02	0.58
1:E:3:ARG:NH2	1:E:80:GLN:O	2.38	0.57
1:C:130:LEU:HD22	2:E:201:COD:H431	1.85	0.57
1:F:3:ARG:HD2	1:F:81:LYS:O	2.05	0.57
1:A:126:ILE:O	2:A:201:COD:N7	2.33	0.57
1:C:118:THR:HG23	1:F:106:ARG:HH12	1.70	0.56
1:E:87:ARG:CZ	2:E:201:COD:HC14	2.37	0.55
1:F:103:ASN:OD1	5:F:301:HOH:O	2.18	0.55
1:D:119:PRO:HG3	2:D:201:COD:HC2	1.88	0.54
1:C:3:ARG:HD3	1:C:81:LYS:O	2.07	0.54
1:F:126:ILE:O	2:F:201:COD:N7	2.36	0.54

*Continued on next page...*

*Continued from previous page...*

Atom-1	Atom-2	Interatomic distance (Å)	Clash overlap (Å)
1:A:94:ASP:OD1	1:A:96:GLU:HG2	2.08	0.53
1:C:8:GLY:HA3	2:C:201:COD:H182	1.91	0.52
2:D:201:COD:H431	1:F:130:LEU:HD22	1.92	0.52
1:F:4:VAL:HG21	1:F:28:PHE:CG	2.46	0.51
1:C:90:ARG:HD3	2:C:201:COD:C6	2.41	0.51
1:F:89:LEU:HB2	1:F:116:PHE:HB3	1.92	0.50
1:D:55:GLN:HG3	1:D:66:VAL:HB	1.94	0.49
1:E:89:LEU:HB2	1:E:116:PHE:HB3	1.93	0.49
1:F:142:SER:HB3	5:F:329:HOH:O	2.11	0.49
1:B:89:LEU:HB2	1:B:116:PHE:HB3	1.95	0.49
1:B:119:PRO:HG3	2:B:201:COD:HC2	1.94	0.48
1:C:89:LEU:HB2	1:C:116:PHE:HB3	1.95	0.48
1:B:3:ARG:NH2	1:B:32:ILE:HD11	2.27	0.48
1:A:91:ALA:HA	1:D:99:PHE:CE2	2.49	0.48
1:E:3:ARG:HB3	1:E:82:ALA:HA	1.95	0.47
1:A:89:LEU:HB2	1:A:116:PHE:HB3	1.95	0.47
1:D:57:VAL:HG22	1:D:146:HIS:CG	2.49	0.47
1:A:116:PHE:HB2	1:D:116:PHE:HB2	1.97	0.47
1:B:100:GLN:OE1	1:D:127:SER:HB2	2.15	0.47
1:C:-5:HIS:CB	1:F:62:PRO:HG3	2.42	0.46
1:B:91:ALA:HA	1:E:99:PHE:CE2	2.50	0.46
1:A:67:VAL:HG11	1:A:76:PHE:HZ	1.81	0.45
1:E:73:LEU:HB2	2:E:201:COD:H371	1.98	0.45
1:E:3:ARG:NH2	1:E:32:ILE:HD11	2.32	0.45
1:F:73:LEU:HB2	2:F:201:COD:H371	1.99	0.45
2:C:201:COD:HC12	2:C:201:COD:HC9	1.60	0.44
1:D:89:LEU:HB2	1:D:116:PHE:HB3	2.00	0.44
1:C:118:THR:HG23	1:F:106:ARG:NH1	2.32	0.43
1:B:108:LEU:HD11	1:D:134:ILE:HD13	2.00	0.43
1:A:101:LEU:HD12	1:A:101:LEU:HA	1.75	0.43
1:C:103:ASN:O	1:C:107:GLN:HG2	2.18	0.43
1:B:119:PRO:HG3	2:B:201:COD:C2	2.49	0.43
1:C:90:ARG:HD2	1:C:124:SER:O	2.17	0.43
1:D:130:LEU:HA	1:D:130:LEU:HD23	1.86	0.42
1:E:117:LEU:HA	1:E:117:LEU:HD23	1.83	0.42
1:D:122:LYS:HE3	1:D:123:TYR:CZ	2.54	0.42
2:B:201:COD:HC12	2:B:201:COD:HC9	1.53	0.42
2:B:201:COD:H301	2:B:201:COD:N36	2.34	0.42
1:C:40:LYS:HA	1:C:40:LYS:HD2	1.77	0.42
1:B:73:LEU:HB2	2:B:201:COD:H371	2.02	0.42
1:A:4:VAL:HG21	1:A:28:PHE:CG	2.55	0.42

*Continued on next page...*

Continued from previous page...

Atom-1	Atom-2	Interatomic distance (Å)	Clash overlap (Å)
2:D:201:COD:HC9	2:D:201:COD:HC12	1.64	0.41
1:F:3:ARG:HB3	1:F:82:ALA:HA	2.02	0.41
1:A:38:SER:N	1:A:39:PRO:HD3	2.36	0.41
1:A:134:ILE:HD13	1:C:108:LEU:HD11	2.02	0.41
1:C:67:VAL:HG11	1:C:76:PHE:HZ	1.85	0.41
1:F:90:ARG:HD2	1:F:124:SER:O	2.21	0.40
2:A:201:COD:HC9	2:A:201:COD:HC12	1.48	0.40
1:D:96:GLU:HG2	1:D:97:TYR:N	2.35	0.40
1:F:117:LEU:HD23	1:F:117:LEU:HA	1.94	0.40
1:A:55:GLN:HG3	1:A:66:VAL:HB	2.03	0.40
1:C:119:PRO:HG3	2:C:201:COD:C2	2.52	0.40
1:F:89:LEU:HD12	1:F:89:LEU:HA	1.97	0.40

There are no symmetry-related clashes.

## 5.3 Torsion angles ⓘ

### 5.3.1 Protein backbone ⓘ

In the following table, the Percentiles column shows the percent Ramachandran outliers of the chain as a percentile score with respect to all X-ray entries followed by that with respect to entries of similar resolution.

The Analysed column shows the number of residues for which the backbone conformation was analysed, and the total number of residues.

Mol	Chain	Analysed	Favoured	Allowed	Outliers	Percentiles	
1	A	164/167 (98%)	164 (100%)	0	0	100	100
1	B	158/167 (95%)	157 (99%)	1 (1%)	0	100	100
1	C	163/167 (98%)	163 (100%)	0	0	100	100
1	D	158/167 (95%)	157 (99%)	1 (1%)	0	100	100
1	E	163/167 (98%)	162 (99%)	1 (1%)	0	100	100
1	F	157/167 (94%)	157 (100%)	0	0	100	100
All	All	963/1002 (96%)	960 (100%)	3 (0%)	0	100	100

There are no Ramachandran outliers to report.

### 5.3.2 Protein sidechains [i](#)

In the following table, the Percentiles column shows the percent sidechain outliers of the chain as a percentile score with respect to all X-ray entries followed by that with respect to entries of similar resolution.

The Analysed column shows the number of residues for which the sidechain conformation was analysed, and the total number of residues.

Mol	Chain	Analysed	Rotameric	Outliers	Percentiles	
1	A	134/142 (94%)	132 (98%)	2 (2%)	65	79
1	B	128/142 (90%)	126 (98%)	2 (2%)	62	78
1	C	133/142 (94%)	129 (97%)	4 (3%)	41	57
1	D	129/142 (91%)	127 (98%)	2 (2%)	62	78
1	E	131/142 (92%)	129 (98%)	2 (2%)	65	79
1	F	126/142 (89%)	126 (100%)	0	100	100
All	All	781/852 (92%)	769 (98%)	12 (2%)	65	79

All (12) residues with a non-rotameric sidechain are listed below:

Mol	Chain	Res	Type
1	A	104	MET
1	A	128	SER
1	B	2	ASN
1	B	65	GLU
1	C	41	LYS
1	C	78	LYS
1	C	101	LEU
1	C	128	SER
1	D	121	GLU
1	D	128	SER
1	E	118	THR
1	E	128	SER

Some sidechains can be flipped to improve hydrogen bonding and reduce clashes. There are no such sidechains identified.

### 5.3.3 RNA [i](#)

There are no RNA molecules in this entry.

## 5.4 Non-standard residues in protein, DNA, RNA chains [i](#)

There are no non-standard protein/DNA/RNA residues in this entry.

## 5.5 Carbohydrates [i](#)

There are no carbohydrates in this entry.

## 5.6 Ligand geometry [i](#)

Of 19 ligands modelled in this entry, 13 are monoatomic - leaving 6 for Mogul analysis.

In the following table, the Counts columns list the number of bonds (or angles) for which Mogul statistics could be retrieved, the number of bonds (or angles) that are observed in the model and the number of bonds (or angles) that are defined in the Chemical Component Dictionary. The Link column lists molecule types, if any, to which the group is linked. The Z score for a bond length (or angle) is the number of standard deviations the observed value is removed from the expected value. A bond length (or angle) with  $|Z| > 2$  is considered an outlier worth inspection. RMSZ is the root-mean-square of all Z scores of the bond lengths (or angles).

Mol	Type	Chain	Res	Link	Bond lengths			Bond angles		
					Counts	RMSZ	$\# Z  > 2$	Counts	RMSZ	$\# Z  > 2$
2	COD	D	201	-	37,46,46	3.06	15 (40%)	46,68,68	4.26	8 (17%)
2	COD	C	201	-	37,46,46	3.07	14 (37%)	46,68,68	4.26	6 (13%)
2	COD	F	201	-	37,46,46	3.05	14 (37%)	46,68,68	4.20	10 (21%)
2	COD	E	201	-	37,46,46	3.05	13 (35%)	46,68,68	4.19	8 (17%)
2	COD	B	201	-	37,46,46	3.01	14 (37%)	46,68,68	4.21	5 (10%)
2	COD	A	201	-	37,46,46	3.08	13 (35%)	46,68,68	4.23	8 (17%)

In the following table, the Chirals column lists the number of chiral outliers, the number of chiral centers analysed, the number of these observed in the model and the number defined in the Chemical Component Dictionary. Similar counts are reported in the Torsion and Rings columns. '-' means no outliers of that kind were identified.

Mol	Type	Chain	Res	Link	Chirals	Torsions	Rings
2	COD	D	201	-	-	11/39/59/59	0/3/3/3
2	COD	C	201	-	-	10/39/59/59	0/3/3/3
2	COD	F	201	-	-	14/39/59/59	0/3/3/3
2	COD	E	201	-	-	11/39/59/59	0/3/3/3
2	COD	B	201	-	-	14/39/59/59	0/3/3/3
2	COD	A	201	-	-	8/39/59/59	0/3/3/3

All (83) bond length outliers are listed below:

Mol	Chain	Res	Type	Atoms	Z	Observed(Å)	Ideal(Å)
2	D	201	COD	O17-C11	-8.17	1.29	1.41
2	A	201	COD	O17-C11	-8.15	1.29	1.41
2	C	201	COD	O17-C11	-8.03	1.29	1.41
2	F	201	COD	O17-C11	-7.74	1.30	1.41
2	A	201	COD	C34-N36	7.74	1.50	1.33
2	E	201	COD	O17-C11	-7.56	1.30	1.41
2	F	201	COD	C34-N36	7.55	1.50	1.33
2	D	201	COD	O17-C16	7.40	1.61	1.45
2	B	201	COD	O17-C11	-7.37	1.30	1.41
2	C	201	COD	C34-N36	7.29	1.49	1.33
2	E	201	COD	O17-C16	7.28	1.61	1.45
2	B	201	COD	C34-N36	7.27	1.49	1.33
2	C	201	COD	O17-C16	7.23	1.61	1.45
2	D	201	COD	C39-N41	7.17	1.49	1.33
2	F	201	COD	O17-C16	7.14	1.61	1.45
2	A	201	COD	O17-C16	7.13	1.60	1.45
2	E	201	COD	C34-N36	7.09	1.49	1.33
2	B	201	COD	O17-C16	7.08	1.60	1.45
2	D	201	COD	C34-N36	7.06	1.49	1.33
2	E	201	COD	C14-C16	-7.05	1.35	1.53
2	A	201	COD	C39-N41	7.02	1.49	1.33
2	E	201	COD	C39-N41	7.01	1.49	1.33
2	C	201	COD	C14-C16	-6.89	1.35	1.53
2	A	201	COD	C14-C16	-6.88	1.35	1.53
2	B	201	COD	C39-N41	6.87	1.49	1.33
2	F	201	COD	C39-N41	6.77	1.48	1.33
2	C	201	COD	C39-N41	6.77	1.48	1.33
2	F	201	COD	C14-C16	-6.73	1.35	1.53
2	B	201	COD	C14-C16	-6.72	1.35	1.53
2	D	201	COD	C14-C16	-6.72	1.35	1.53
2	B	201	COD	C12-C11	3.30	1.58	1.53
2	E	201	COD	C6-N7	3.10	1.45	1.34
2	F	201	COD	C12-C11	3.06	1.58	1.53
2	F	201	COD	C6-N7	3.05	1.45	1.34
2	A	201	COD	C6-N7	3.00	1.45	1.34
2	D	201	COD	C6-N7	2.98	1.44	1.34
2	B	201	COD	C6-N7	2.94	1.44	1.34
2	C	201	COD	C6-N7	2.93	1.44	1.34
2	F	201	COD	C38-C39	2.87	1.56	1.51
2	C	201	COD	C38-C39	2.86	1.56	1.51
2	B	201	COD	O15-C14	2.84	1.49	1.43
2	B	201	COD	C5-C4	-2.83	1.33	1.40

*Continued on next page...*



*Continued from previous page...*

Mol	Chain	Res	Type	Atoms	Z	Observed(Å)	Ideal(Å)
2	C	201	COD	C12-C11	2.78	1.58	1.53
2	C	201	COD	O15-C14	2.77	1.49	1.43
2	B	201	COD	C38-C39	2.77	1.56	1.51
2	C	201	COD	O13-C12	-2.77	1.36	1.43
2	D	201	COD	O15-C14	2.77	1.49	1.43
2	F	201	COD	C5-C4	-2.76	1.33	1.40
2	E	201	COD	O13-C12	-2.76	1.36	1.43
2	E	201	COD	O35-C34	-2.75	1.17	1.23
2	D	201	COD	C5-C4	-2.74	1.33	1.40
2	D	201	COD	O13-C12	-2.73	1.36	1.43
2	A	201	COD	C5-C4	-2.72	1.33	1.40
2	C	201	COD	C5-C4	-2.72	1.33	1.40
2	A	201	COD	C12-C11	2.71	1.57	1.53
2	A	201	COD	O15-C14	2.70	1.49	1.43
2	F	201	COD	O15-C14	2.68	1.49	1.43
2	E	201	COD	C38-C39	2.63	1.56	1.51
2	F	201	COD	O13-C12	-2.62	1.36	1.43
2	E	201	COD	C5-C4	-2.58	1.34	1.40
2	D	201	COD	C12-C11	2.57	1.57	1.53
2	E	201	COD	C12-C11	2.55	1.57	1.53
2	A	201	COD	O13-C12	-2.51	1.37	1.43
2	B	201	COD	O13-C12	-2.47	1.37	1.43
2	C	201	COD	P24-O27	2.47	1.69	1.59
2	E	201	COD	O15-C14	2.45	1.48	1.43
2	D	201	COD	O35-C34	-2.41	1.18	1.23
2	C	201	COD	O40-C39	-2.31	1.18	1.23
2	A	201	COD	O35-C34	-2.30	1.18	1.23
2	F	201	COD	P24-O27	2.26	1.68	1.59
2	C	201	COD	O35-C34	-2.25	1.18	1.23
2	E	201	COD	P24-O27	2.22	1.68	1.59
2	B	201	COD	P24-O27	2.22	1.68	1.59
2	B	201	COD	O40-C39	-2.19	1.18	1.23
2	B	201	COD	O35-C34	-2.18	1.19	1.23
2	F	201	COD	O40-C39	-2.18	1.18	1.23
2	D	201	COD	P24-O27	2.17	1.68	1.59
2	F	201	COD	O35-C34	-2.13	1.19	1.23
2	A	201	COD	C38-C39	2.12	1.55	1.51
2	D	201	COD	O40-C39	-2.06	1.19	1.23
2	D	201	COD	C2-N3	2.05	1.35	1.32
2	D	201	COD	C38-C39	2.02	1.55	1.51
2	A	201	COD	O40-C39	-2.01	1.19	1.23

All (45) bond angle outliers are listed below:

Mol	Chain	Res	Type	Atoms	Z	Observed(°)	Ideal(°)
2	B	201	COD	C5-C6-N7	17.63	147.14	120.35
2	C	201	COD	C5-C6-N7	17.50	146.94	120.35
2	D	201	COD	C11-N10-C4	17.49	157.36	126.64
2	E	201	COD	C11-N10-C4	17.28	156.99	126.64
2	A	201	COD	C11-N10-C4	17.25	156.94	126.64
2	F	201	COD	C11-N10-C4	17.16	156.79	126.64
2	C	201	COD	C11-N10-C4	17.04	156.58	126.64
2	A	201	COD	C5-C6-N7	16.89	146.02	120.35
2	F	201	COD	C5-C6-N7	16.84	145.94	120.35
2	D	201	COD	C5-C6-N7	16.77	145.84	120.35
2	E	201	COD	C5-C6-N7	16.67	145.69	120.35
2	B	201	COD	C11-N10-C4	16.30	155.29	126.64
2	B	201	COD	N7-C6-N1	-12.60	92.43	118.57
2	C	201	COD	N7-C6-N1	-12.33	92.98	118.57
2	D	201	COD	N7-C6-N1	-12.24	93.16	118.57
2	F	201	COD	N7-C6-N1	-12.05	93.56	118.57
2	A	201	COD	N7-C6-N1	-11.96	93.74	118.57
2	E	201	COD	N7-C6-N1	-11.45	94.81	118.57
2	D	201	COD	N3-C2-N1	-6.15	119.07	128.68
2	B	201	COD	N3-C2-N1	-5.99	119.32	128.68
2	C	201	COD	N3-C2-N1	-5.89	119.47	128.68
2	A	201	COD	N3-C2-N1	-5.84	119.55	128.68
2	E	201	COD	N3-C2-N1	-5.77	119.66	128.68
2	F	201	COD	N3-C2-N1	-5.67	119.81	128.68
2	E	201	COD	C14-C12-C11	-3.91	95.09	100.98
2	A	201	COD	C37-C38-C39	-3.85	105.94	112.36
2	D	201	COD	C37-C38-C39	-3.82	105.99	112.36
2	A	201	COD	C43-C42-N41	-3.34	104.67	112.31
2	D	201	COD	C30-C29-C32	2.99	114.00	108.82
2	F	201	COD	C38-C39-N41	2.75	121.05	116.42
2	C	201	COD	O27-C28-C29	2.72	114.92	110.55
2	D	201	COD	O17-C11-C12	-2.48	103.31	106.93
2	F	201	COD	C32-C34-N36	2.47	121.49	116.58
2	F	201	COD	C43-C42-N41	-2.42	106.78	112.31
2	F	201	COD	O40-C39-N41	-2.40	118.48	123.01
2	D	201	COD	O27-C28-C29	2.36	114.34	110.55
2	E	201	COD	C37-C38-C39	-2.34	108.47	112.36
2	B	201	COD	C14-C12-C11	-2.31	97.50	100.98
2	C	201	COD	C43-C42-N41	-2.27	107.11	112.31
2	A	201	COD	C32-C34-N36	2.17	120.90	116.58
2	E	201	COD	C38-C39-N41	2.14	120.02	116.42
2	A	201	COD	C14-C12-C11	-2.09	97.83	100.98
2	E	201	COD	C32-C34-N36	2.09	120.74	116.58

Continued on next page...

*Continued from previous page...*

Mol	Chain	Res	Type	Atoms	Z	Observed(°)	Ideal(°)
2	F	201	COD	C42-N41-C39	-2.07	118.99	122.84
2	F	201	COD	C37-C38-C39	-2.04	108.96	112.36

There are no chirality outliers.

All (68) torsion outliers are listed below:

Mol	Chain	Res	Type	Atoms
2	D	201	COD	C18-O19-P20-O22
2	D	201	COD	C28-O27-P24-O25
2	D	201	COD	C28-O27-P24-O26
2	D	201	COD	O33-C32-C34-N36
2	D	201	COD	N41-C42-C43-S44
2	C	201	COD	C18-O19-P20-O23
2	C	201	COD	C28-O27-P24-O23
2	C	201	COD	C28-O27-P24-O25
2	C	201	COD	C28-O27-P24-O26
2	F	201	COD	C18-O19-P20-O23
2	F	201	COD	O27-C28-C29-C32
2	F	201	COD	O33-C32-C34-N36
2	F	201	COD	N41-C42-C43-S44
2	E	201	COD	C14-C16-C18-O19
2	E	201	COD	O17-C16-C18-O19
2	E	201	COD	C18-O19-P20-O21
2	E	201	COD	C18-O19-P20-O22
2	E	201	COD	C18-O19-P20-O23
2	E	201	COD	C28-O27-P24-O23
2	E	201	COD	C28-O27-P24-O25
2	E	201	COD	C28-O27-P24-O26
2	E	201	COD	N41-C42-C43-S44
2	B	201	COD	C18-O19-P20-O23
2	B	201	COD	C28-O27-P24-O23
2	B	201	COD	O33-C32-C34-N36
2	B	201	COD	N41-C42-C43-S44
2	A	201	COD	C18-O19-P20-O23
2	A	201	COD	C28-O27-P24-O25
2	A	201	COD	C28-O27-P24-O26
2	F	201	COD	O17-C16-C18-O19
2	F	201	COD	C14-C16-C18-O19
2	C	201	COD	O17-C16-C18-O19
2	D	201	COD	O33-C32-C34-O35
2	F	201	COD	O33-C32-C34-O35
2	B	201	COD	O33-C32-C34-O35

*Continued on next page...*

*Continued from previous page...*

Mol	Chain	Res	Type	Atoms
2	F	201	COD	O27-C28-C29-C30
2	F	201	COD	O27-C28-C29-C31
2	B	201	COD	C29-C32-C34-O35
2	B	201	COD	C29-C32-C34-N36
2	D	201	COD	P24-O23-P20-O19
2	D	201	COD	C18-O19-P20-O23
2	A	201	COD	C28-O27-P24-O23
2	D	201	COD	P20-O23-P24-O25
2	C	201	COD	C18-O19-P20-O21
2	C	201	COD	C18-O19-P20-O22
2	F	201	COD	C18-O19-P20-O21
2	F	201	COD	C18-O19-P20-O22
2	B	201	COD	C18-O19-P20-O21
2	B	201	COD	C18-O19-P20-O22
2	B	201	COD	C28-O27-P24-O25
2	A	201	COD	C18-O19-P20-O22
2	F	201	COD	P20-O23-P24-O25
2	E	201	COD	P20-O23-P24-O25
2	B	201	COD	P20-O23-P24-O25
2	D	201	COD	O17-C16-C18-O19
2	F	201	COD	P20-O23-P24-O26
2	A	201	COD	P24-O23-P20-O22
2	B	201	COD	O17-C16-C18-O19
2	C	201	COD	O33-C32-C34-O35
2	C	201	COD	C14-C16-C18-O19
2	D	201	COD	C28-O27-P24-O23
2	F	201	COD	C28-O27-P24-O23
2	C	201	COD	P20-O23-P24-O25
2	E	201	COD	P20-O23-P24-O26
2	B	201	COD	P20-O23-P24-O26
2	A	201	COD	C18-O19-P20-O21
2	B	201	COD	C14-C16-C18-O19
2	A	201	COD	O17-C16-C18-O19

There are no ring outliers.

6 monomers are involved in 19 short contacts:

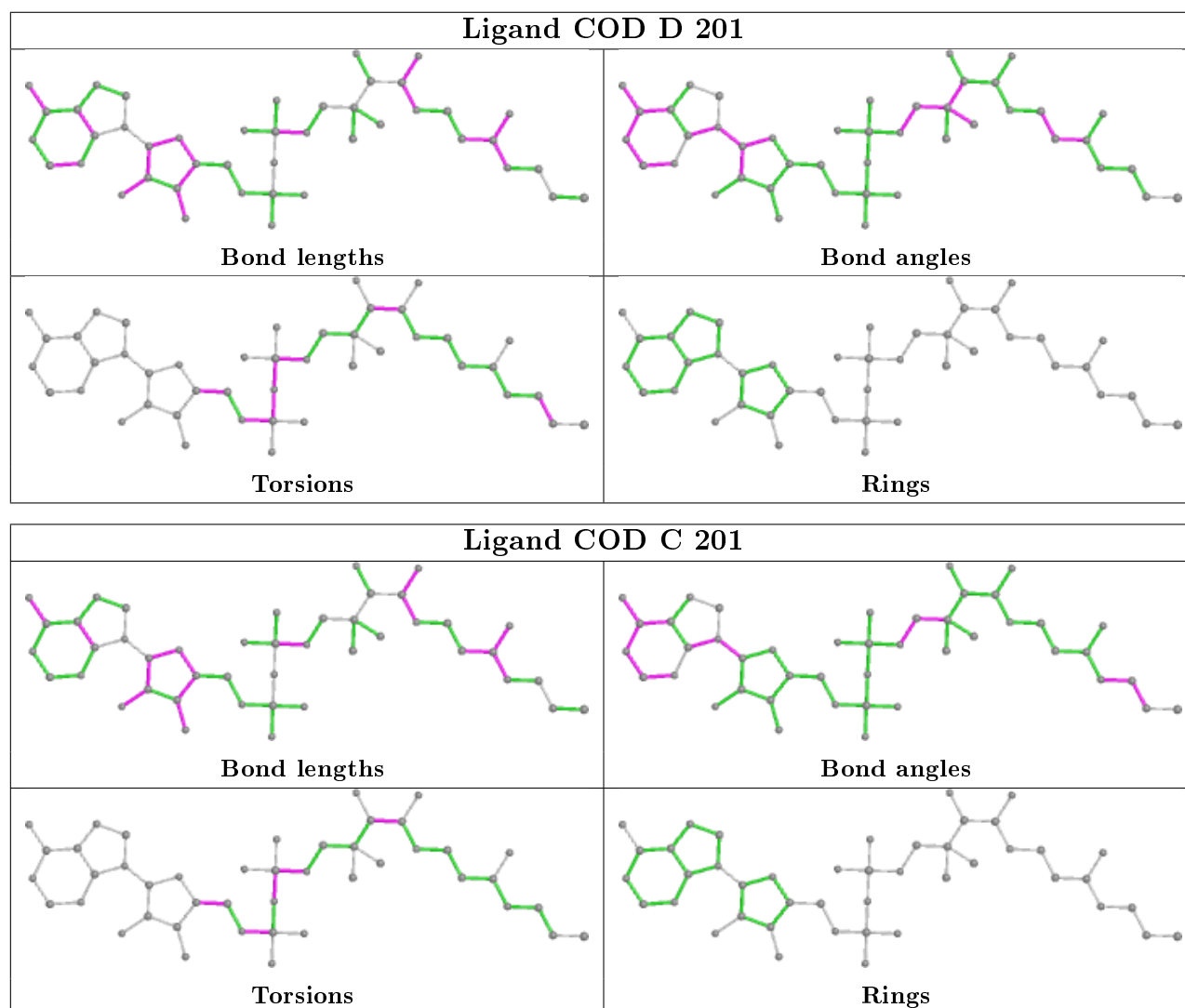
Mol	Chain	Res	Type	Clashes	Symm-Clashes
2	D	201	COD	3	0
2	C	201	COD	4	0
2	F	201	COD	2	0
2	E	201	COD	3	0

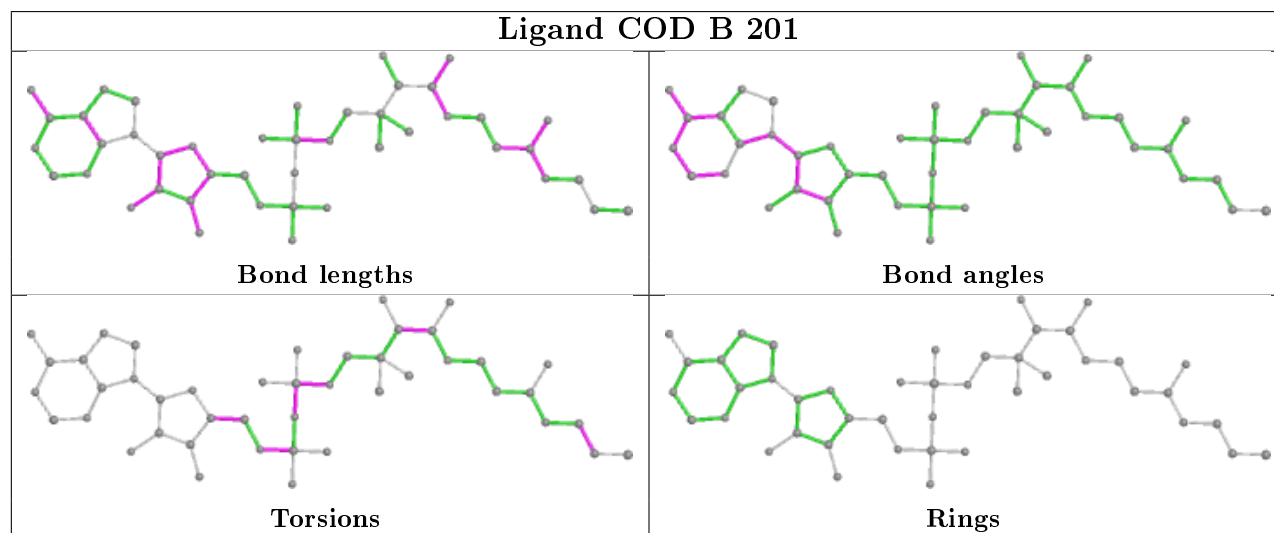
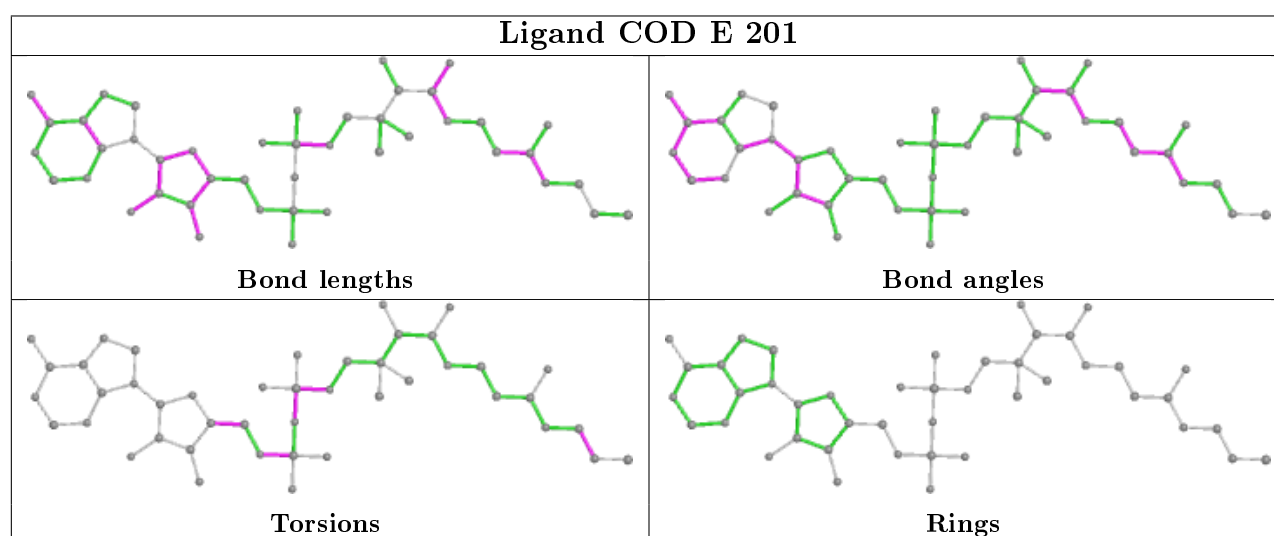
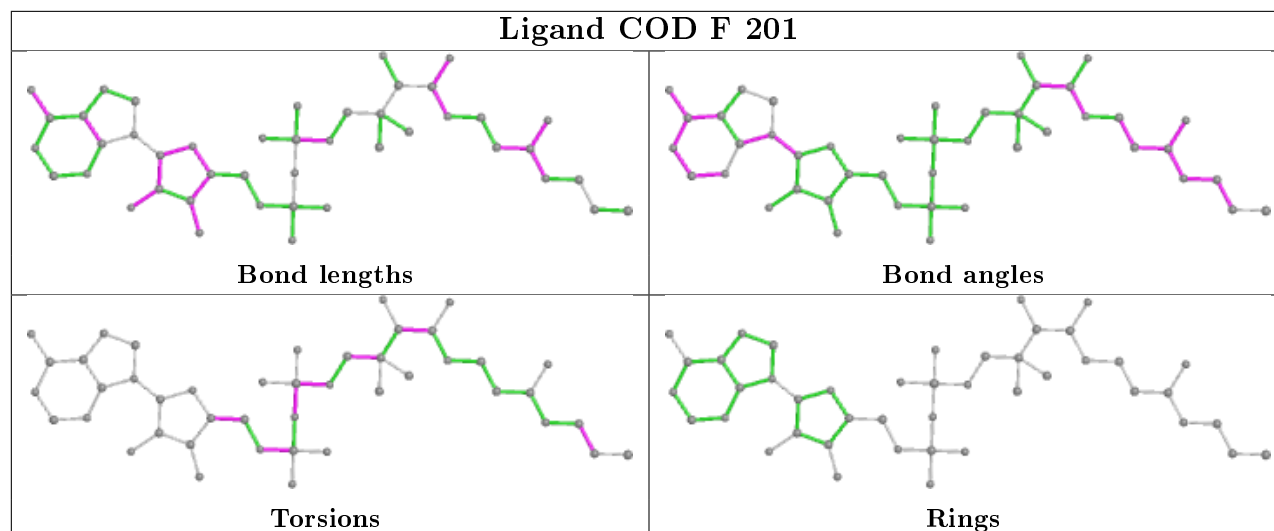
*Continued on next page...*

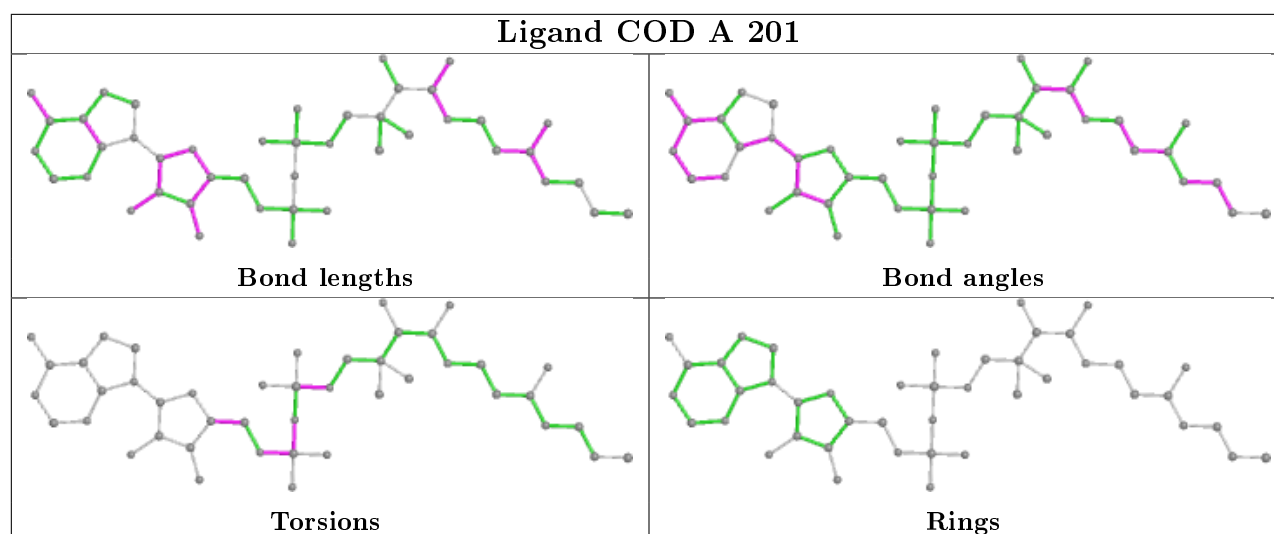
*Continued from previous page...*

Mol	Chain	Res	Type	Clashes	Symm-Clashes
2	B	201	COD	5	0
2	A	201	COD	2	0

The following is a two-dimensional graphical depiction of Mogul quality analysis of bond lengths, bond angles, torsion angles, and ring geometry for all instances of the Ligand of Interest. In addition, ligands with molecular weight > 250 and outliers as shown on the validation Tables will also be included. For torsion angles, if less than 5% of the Mogul distribution of torsion angles is within 10 degrees of the torsion angle in question, then that torsion angle is considered an outlier. Any bond that is central to one or more torsion angles identified as an outlier by Mogul will be highlighted in the graph. For rings, the root-mean-square deviation (RMSD) between the ring in question and similar rings identified by Mogul is calculated over all ring torsion angles. If the average RMSD is greater than 60 degrees and the minimal RMSD between the ring in question and any Mogul-identified rings is also greater than 60 degrees, then that ring is considered an outlier. The outliers are highlighted in purple. The color gray indicates Mogul did not find sufficient equivalents in the CSD to analyse the geometry.







## 5.7 Other polymers [i](#)

There are no such residues in this entry.

## 5.8 Polymer linkage issues [i](#)

There are no chain breaks in this entry.

## 6 Fit of model and data [i](#)

### 6.1 Protein, DNA and RNA chains [i](#)

In the following table, the column labelled ‘#RSRZ> 2’ contains the number (and percentage) of RSRZ outliers, followed by percent RSRZ outliers for the chain as percentile scores relative to all X-ray entries and entries of similar resolution. The OWAB column contains the minimum, median, 95<sup>th</sup> percentile and maximum values of the occupancy-weighted average B-factor per residue. The column labelled ‘Q< 0.9’ lists the number of (and percentage) of residues with an average occupancy less than 0.9.

Mol	Chain	Analysed	<RSRZ>	#RSRZ>2	OWAB(Å <sup>2</sup> )	Q<0.9
1	A	165/167 (98%)	-0.44	0 100 100	36, 49, 67, 79	0
1	B	158/167 (94%)	-0.38	0 100 100	34, 49, 69, 94	0
1	C	165/167 (98%)	-0.37	0 100 100	36, 51, 70, 86	0
1	D	159/167 (95%)	-0.39	0 100 100	26, 42, 65, 84	0
1	E	165/167 (98%)	-0.48	0 100 100	36, 51, 65, 92	0
1	F	159/167 (95%)	-0.40	0 100 100	32, 49, 78, 91	0
All	All	971/1002 (96%)	-0.41	0 100 100	26, 49, 70, 94	0

There are no RSRZ outliers to report.

### 6.2 Non-standard residues in protein, DNA, RNA chains [i](#)

There are no non-standard protein/DNA/RNA residues in this entry.

### 6.3 Carbohydrates [i](#)

There are no carbohydrates in this entry.

### 6.4 Ligands [i](#)

In the following table, the Atoms column lists the number of modelled atoms in the group and the number defined in the chemical component dictionary. The B-factors column lists the minimum, median, 95<sup>th</sup> percentile and maximum values of B factors of atoms in the group. The column labelled ‘Q< 0.9’ lists the number of atoms with occupancy less than 0.9.

Mol	Type	Chain	Res	Atoms	RSCC	RSR	B-factors(Å <sup>2</sup> )	Q<0.9
3	CA	E	202	1/1	0.76	0.12	127,127,127,127	0

*Continued on next page...*



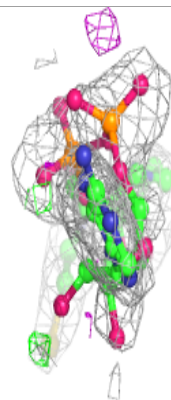
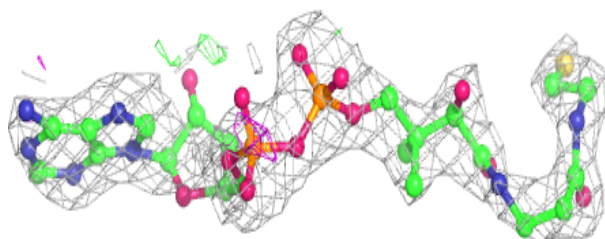
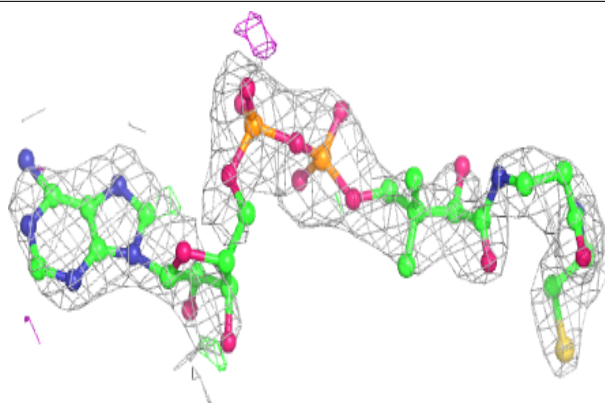
*Continued from previous page...*

Mol	Type	Chain	Res	Atoms	RSCC	RSR	B-factors( $\text{\AA}^2$ )	Q<0.9
2	COD	A	201	44/44	0.85	0.23	36,62,93,106	44
4	CL	F	202	1/1	0.85	0.19	80,80,80,80	0
2	COD	F	201	44/44	0.86	0.18	35,74,94,103	44
2	COD	B	201	44/44	0.88	0.17	46,75,96,105	0
2	COD	E	201	44/44	0.89	0.18	30,60,93,95	44
2	COD	D	201	44/44	0.89	0.14	30,58,86,91	0
2	COD	C	201	44/44	0.92	0.15	33,66,99,103	44
4	CL	B	202	1/1	0.93	0.12	62,62,62,62	0
4	CL	B	203	1/1	0.94	0.18	64,64,64,64	0
4	CL	A	203	1/1	0.94	0.14	61,61,61,61	0
4	CL	E	203	1/1	0.95	0.08	62,62,62,62	0
4	CL	D	202	1/1	0.95	0.15	65,65,65,65	0
4	CL	C	204	1/1	0.97	0.10	66,66,66,66	0
4	CL	C	202	1/1	0.97	0.17	67,67,67,67	0
4	CL	D	203	1/1	0.97	0.12	61,61,61,61	0
4	CL	F	203	1/1	0.97	0.09	92,92,92,92	0
4	CL	C	203	1/1	0.99	0.05	56,56,56,56	0
3	CA	A	202	1/1	1.00	0.16	24,24,24,24	0

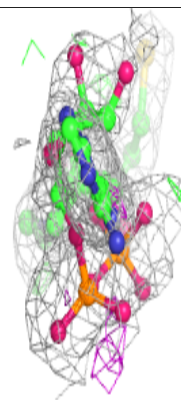
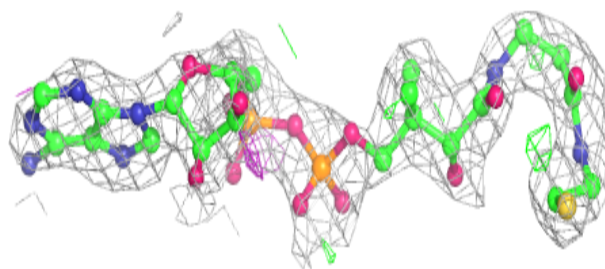
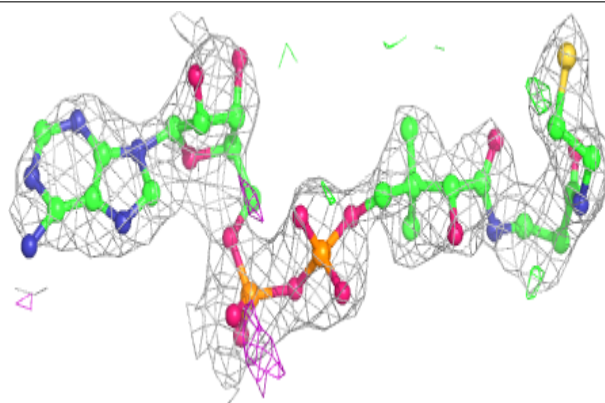
The following is a graphical depiction of the model fit to experimental electron density of all instances of the Ligand of Interest. In addition, ligands with molecular weight > 250 and outliers as shown on the geometry validation Tables will also be included. Each fit is shown from different orientation to approximate a three-dimensional view.

**Electron density around COD A 201:**

$2mF_o-DF_c$  (at 0.7 rmsd) in gray  
 $mF_o-DF_c$  (at 3 rmsd) in purple (negative)  
and green (positive)

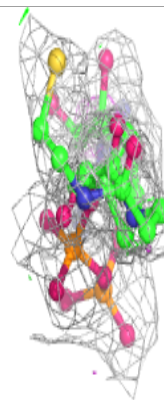
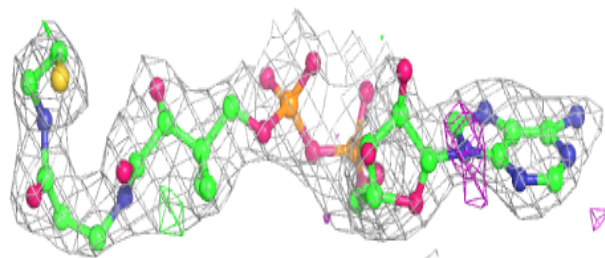
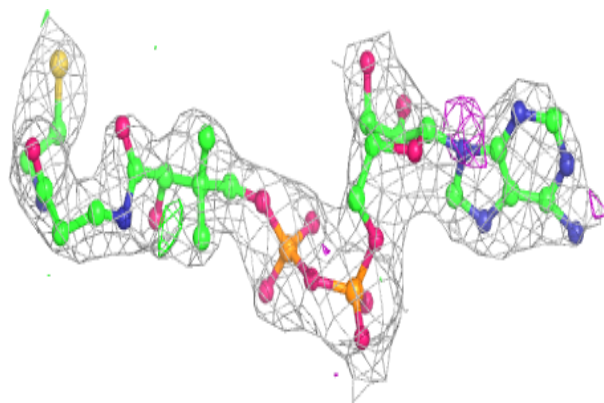
**Electron density around COD F 201:**

$2mF_o-DF_c$  (at 0.7 rmsd) in gray  
 $mF_o-DF_c$  (at 3 rmsd) in purple (negative)  
and green (positive)

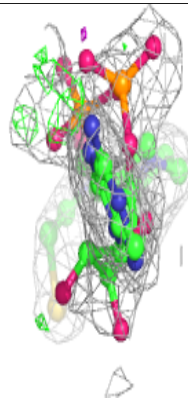
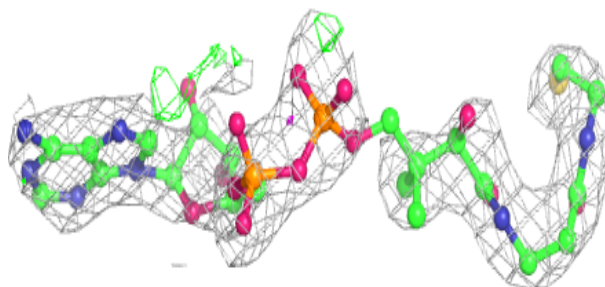
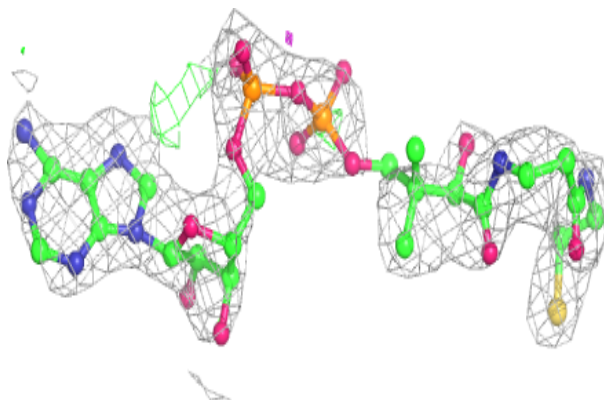


**Electron density around COD B 201:**

$2mF_o-DF_c$  (at 0.7 rmsd) in gray  
 $mF_o-DF_c$  (at 3 rmsd) in purple (negative)  
and green (positive)

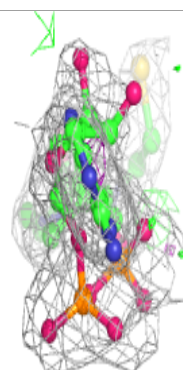
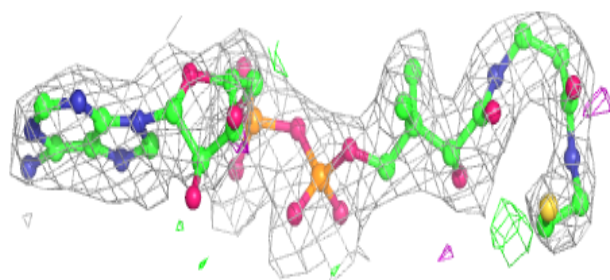
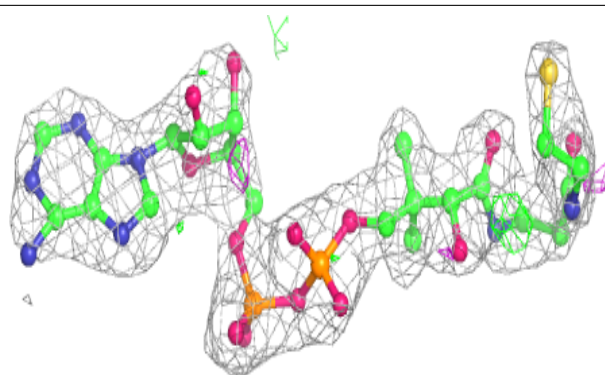
**Electron density around COD E 201:**

$2mF_o-DF_c$  (at 0.7 rmsd) in gray  
 $mF_o-DF_c$  (at 3 rmsd) in purple (negative)  
and green (positive)

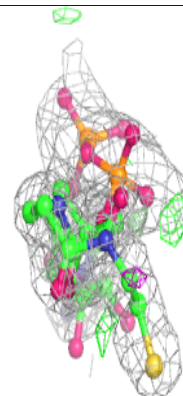
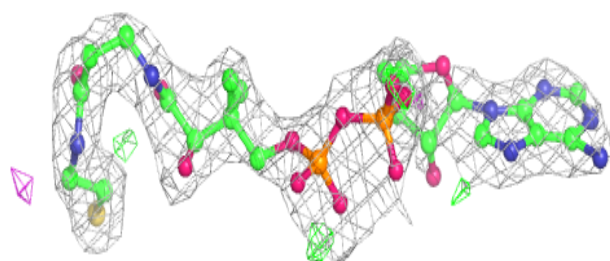
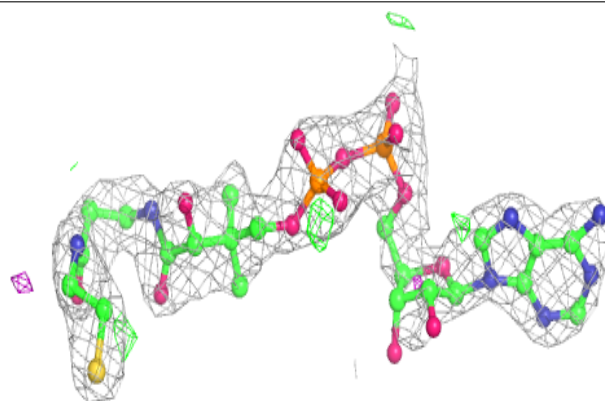


**Electron density around COD D 201:**

$2mF_o-DF_c$  (at 0.7 rmsd) in gray  
 $mF_o-DF_c$  (at 3 rmsd) in purple (negative)  
and green (positive)

**Electron density around COD C 201:**

$2mF_o-DF_c$  (at 0.7 rmsd) in gray  
 $mF_o-DF_c$  (at 3 rmsd) in purple (negative)  
and green (positive)



## 6.5 Other polymers

There are no such residues in this entry.