



Full wwPDB X-ray Structure Validation Report ⓘ

Aug 6, 2020 – 06:06 PM BST

PDB ID : 4TX8
Title : Crystal Structure of a Family GH18 Chitinase from *Chromobacterium violaceum*
Authors : Pereira, H.M.; Lobo, M.D.P.; Brandao-Neto, J.; Grangeiro, T.B.
Deposited on : 2014-07-02
Resolution : 2.17 Å(reported)

This is a Full wwPDB X-ray Structure Validation Report for a publicly released PDB entry.

We welcome your comments at validation@mail.wwpdb.org

A user guide is available at

<https://www.wwpdb.org/validation/2017/XrayValidationReportHelp>

with specific help available everywhere you see the ⓘ symbol.

The following versions of software and data (see [references ⓘ](#)) were used in the production of this report:

MolProbity : 4.02b-467
Mogul : 1.8.5 (274361), CSD as541be (2020)
Xtriage (Phenix) : 1.13
EDS : 2.13.1
Percentile statistics : 20191225.v01 (using entries in the PDB archive December 25th 2019)
Refmac : 5.8.0158
CCP4 : 7.0.044 (Gargrove)
Ideal geometry (proteins) : Engh & Huber (2001)
Ideal geometry (DNA, RNA) : Parkinson et al. (1996)
Validation Pipeline (wwPDB-VP) : 2.13.1

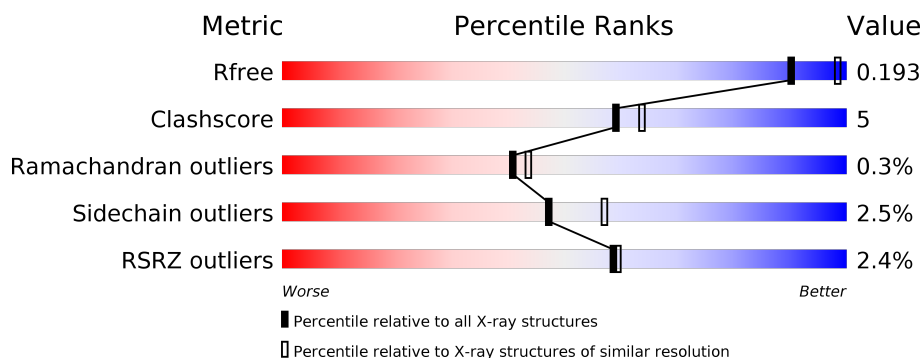
1 Overall quality at a glance

The following experimental techniques were used to determine the structure:

X-RAY DIFFRACTION

The reported resolution of this entry is 2.17 Å.

Percentile scores (ranging between 0-100) for global validation metrics of the entry are shown in the following graphic. The table shows the number of entries on which the scores are based.



Metric	Whole archive (#Entries)	Similar resolution (#Entries, resolution range(Å))
R_{free}	130704	6864 (2.20-2.16)
Clashscore	141614	7689 (2.20-2.16)
Ramachandran outliers	138981	7564 (2.20-2.16)
Sidechain outliers	138945	7564 (2.20-2.16)
RSRZ outliers	127900	6738 (2.20-2.16)

The table below summarises the geometric issues observed across the polymeric chains and their fit to the electron density. The red, orange, yellow and green segments on the lower bar indicate the fraction of residues that contain outliers for ≥ 3 , 2, 1 and 0 types of geometric quality criteria respectively. A grey segment represents the fraction of residues that are not modelled. The numeric value for each fraction is indicated below the corresponding segment, with a dot representing fractions $\leq 5\%$. The upper red bar (where present) indicates the fraction of residues that have poor fit to the electron density. The numeric value is given above the bar.

Mol	Chain	Length	Quality of chain
1	A	439	<div> <div>2%</div> <div>78%</div> <div>7%</div> <div>15%</div> </div>

The following table lists non-polymeric compounds, carbohydrate monomers and non-standard residues in protein, DNA, RNA chains that are outliers for geometric or electron-density-fit criteria:

Mol	Type	Chain	Res	Chirality	Geometry	Clashes	Electron density
5	FLC	A	504	-	-	X	X
5	FLC	A	505	-	-	-	X

Continued on next page...

Continued from previous page...

Mol	Type	Chain	Res	Chirality	Geometry	Clashes	Electron density
5	FLC	A	506	-	-	X	X
5	FLC	A	507	-	-	X	X

2 Entry composition [i](#)

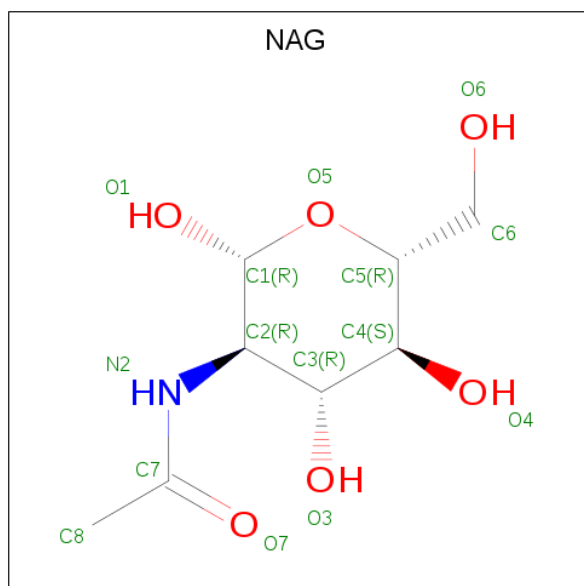
There are 6 unique types of molecules in this entry. The entry contains 3133 atoms, of which 0 are hydrogens and 0 are deuteriums.

In the tables below, the ZeroOcc column contains the number of atoms modelled with zero occupancy, the AltConf column contains the number of residues with at least one atom in alternate conformation and the Trace column contains the number of residues modelled with at most 2 atoms.

- Molecule 1 is a protein called Probable chitinase A.

Mol	Chain	Residues	Atoms					ZeroOcc	AltConf	Trace
1	A	374	Total	C	N	O	S	0	2	0
			2772	1765	471	528	8			

- Molecule 2 is 2-acetamido-2-deoxy-beta-D-glucopyranose (three-letter code: NAG) (formula: $C_8H_{15}NO_6$).



Mol	Chain	Residues	Atoms				ZeroOcc	AltConf
2	A	1	Total	C	N	O	0	0
			15	8	1	6		

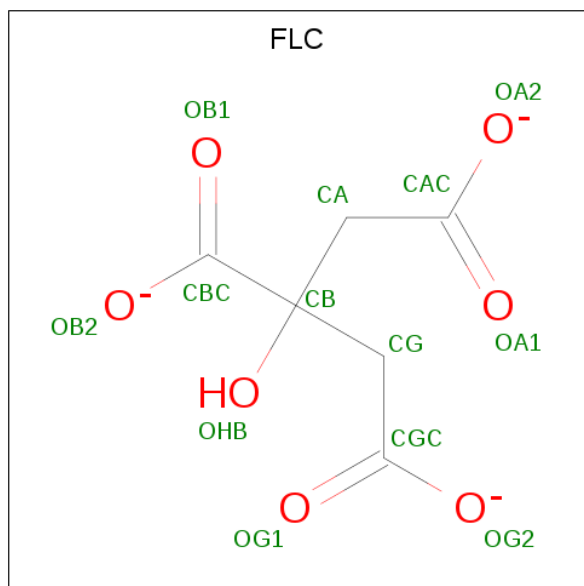
- Molecule 3 is MAGNESIUM ION (three-letter code: MG) (formula: Mg).

Mol	Chain	Residues	Atoms		ZeroOcc	AltConf
3	A	1	Total	Mg	0	0
			1	1		

- Molecule 4 is CALCIUM ION (three-letter code: CA) (formula: Ca).

Mol	Chain	Residues	Atoms	ZeroOcc	AltConf
4	A	1	Total Ca 1 1	0	0

- Molecule 5 is CITRATE ANION (three-letter code: FLC) (formula: $C_6H_5O_7$).

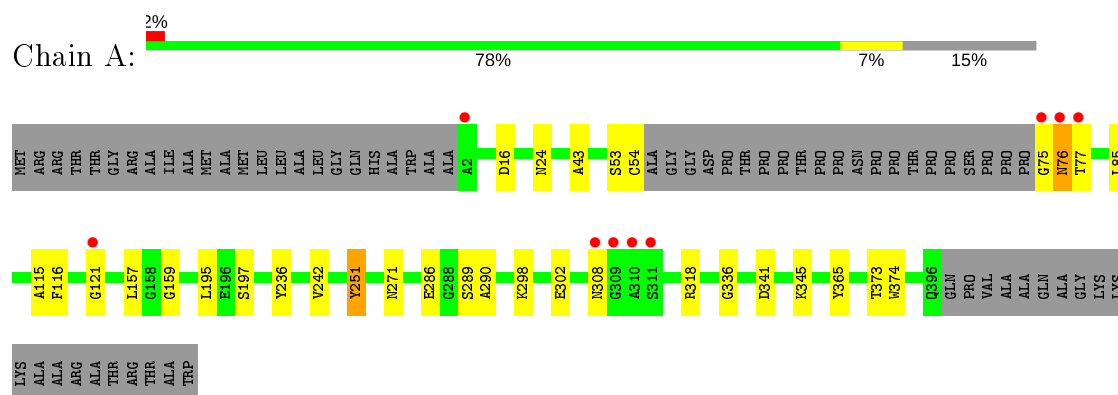


Mol	Chain	Residues	Atoms	ZeroOcc	AltConf
5	A	1	Total C O 13 6 7	0	0
5	A	1	Total C O 13 6 7	0	0
5	A	1	Total C O 13 6 7	0	0
5	A	1	Total C O 13 6 7	0	0

- Molecule 6 is water.

Mol	Chain	Residues	Atoms	ZeroOcc	AltConf
6	A	292	Total O 292 292	0	0

- Molecule 1: Probable chitinase A



4 Data and refinement statistics

Property	Value	Source
Space group	P 43 21 2	Depositor
Cell constants a, b, c, α , β , γ	120.48Å 120.48Å 106.41Å 90.00° 90.00° 90.00°	Depositor
Resolution (Å)	48.67 – 2.17 48.67 – 2.17	Depositor EDS
% Data completeness (in resolution range)	96.3 (48.67-2.17) 96.3 (48.67-2.17)	Depositor EDS
R_{merge}	0.07	Depositor
R_{sym}	(Not available)	Depositor
$\langle I/\sigma(I) \rangle$ ¹	2.29 (at 2.18Å)	Xtriage
Refinement program	PHENIX (phenix.refine: 1.9_1692)	Depositor
R, R_{free}	0.168 , 0.191 0.173 , 0.193	Depositor DCC
R_{free} test set	2026 reflections (5.01%)	wwPDB-VP
Wilson B-factor (Å ²)	32.9	Xtriage
Anisotropy	0.422	Xtriage
Bulk solvent k_{sol} (e/Å ³), B_{sol} (Å ²)	0.34 , 45.3	EDS
L-test for twinning ²	$\langle L \rangle = 0.48$, $\langle L^2 \rangle = 0.31$	Xtriage
Estimated twinning fraction	No twinning to report.	Xtriage
F_o, F_c correlation	0.96	EDS
Total number of atoms	3133	wwPDB-VP
Average B, all atoms (Å ²)	36.0	wwPDB-VP

Xtriage's analysis on translational NCS is as follows: *The largest off-origin peak in the Patterson function is 3.07% of the height of the origin peak. No significant pseudotranslation is detected.*

¹Intensities estimated from amplitudes.

²Theoretical values of $\langle |L| \rangle$, $\langle L^2 \rangle$ for acentric reflections are 0.5, 0.333 respectively for untwinned datasets, and 0.375, 0.2 for perfectly twinned datasets.

5 Model quality

5.1 Standard geometry

Bond lengths and bond angles in the following residue types are not validated in this section: FLC, CA, MG, NAG

The Z score for a bond length (or angle) is the number of standard deviations the observed value is removed from the expected value. A bond length (or angle) with $|Z| > 5$ is considered an outlier worth inspection. RMSZ is the root-mean-square of all Z scores of the bond lengths (or angles).

Mol	Chain	Bond lengths		Bond angles	
		RMSZ	# Z >5	RMSZ	# Z >5
1	A	0.24	0/2850	0.43	0/3893

There are no bond length outliers.

There are no bond angle outliers.

There are no chirality outliers.

There are no planarity outliers.

5.2 Too-close contacts

In the following table, the Non-H and H(model) columns list the number of non-hydrogen atoms and hydrogen atoms in the chain respectively. The H(added) column lists the number of hydrogen atoms added and optimized by MolProbity. The Clashes column lists the number of clashes within the asymmetric unit, whereas Symm-Clashes lists symmetry related clashes.

Mol	Chain	Non-H	H(model)	H(added)	Clashes	Symm-Clashes
1	A	2772	0	2667	23	1
2	A	15	0	15	1	0
3	A	1	0	0	0	0
4	A	1	0	0	0	0
5	A	52	0	20	13	1
6	A	292	0	0	5	1
All	All	3133	0	2702	26	2

The all-atom clashscore is defined as the number of clashes found per 1000 atoms (including hydrogen atoms). The all-atom clashscore for this structure is 5.

All (26) close contacts within the same asymmetric unit are listed below, sorted by their clash magnitude.

Atom-1	Atom-2	Interatomic distance (Å)	Clash overlap (Å)
1:A:290:ALA:H	5:A:507:FLC:HG1	1.41	0.85
5:A:504:FLC:HG1	6:A:601:HOH:O	1.81	0.79
1:A:271:ASN:HB3	5:A:504:FLC:HA2	1.66	0.76
1:A:24:ASN:ND2	2:A:501:NAG:O4	2.20	0.75
5:A:504:FLC:OB2	6:A:601:HOH:O	2.06	0.74
5:A:506:FLC:OB2	6:A:602:HOH:O	2.09	0.71
1:A:302:GLU:OE2	1:A:365:TYR:OH	2.20	0.60
1:A:197:SER:HB3	5:A:506:FLC:HG1	1.84	0.59
1:A:289:SER:HB2	5:A:507:FLC:HG2	1.85	0.58
1:A:159:GLY:N	5:A:506:FLC:OA1	2.28	0.50
1:A:159:GLY:H	5:A:506:FLC:CAC	2.23	0.49
1:A:286:GLU:HG2	1:A:336:GLY:HA2	1.93	0.49
1:A:197:SER:CB	5:A:506:FLC:HG1	2.41	0.49
1:A:16:ASP:OD1	6:A:837:HOH:O	2.20	0.48
1:A:75:GLY:HA3	1:A:76:ASN:HA	1.53	0.47
1:A:115:ALA:HA	1:A:116:PHE:HA	1.71	0.46
1:A:290:ALA:H	5:A:507:FLC:CG	2.22	0.46
1:A:345:LYS:NZ	5:A:507:FLC:OHB	2.48	0.46
1:A:24:ASN:ND2	1:A:53:SER:HA	2.30	0.46
1:A:115:ALA:HB1	1:A:116:PHE:CE2	2.51	0.45
1:A:298:LYS:O	1:A:302:GLU:HG2	2.16	0.45
1:A:374:TRP:HB2	5:A:505:FLC:OG1	2.17	0.45
1:A:236:TYR:HB3	1:A:251:TYR:HB2	1.99	0.44
1:A:77:THR:HG23	1:A:318:ARG:HH22	1.84	0.43
1:A:341[B]:ASP:OD1	6:A:697:HOH:O	2.21	0.42
1:A:157:LEU:HB3	1:A:195:LEU:HD23	2.00	0.41

All (2) symmetry-related close contacts are listed below. The label for Atom-2 includes the symmetry operator and encoded unit-cell translations to be applied.

Atom-1	Atom-2	Interatomic distance (Å)	Clash overlap (Å)
1:A:43:ALA:O	5:A:504:FLC:OHB[7_555]	2.07	0.13
6:A:611:HOH:O	6:A:622:HOH:O[7_555]	2.18	0.02

5.3 Torsion angles [i](#)

5.3.1 Protein backbone [i](#)

In the following table, the Percentiles column shows the percent Ramachandran outliers of the chain as a percentile score with respect to all X-ray entries followed by that with respect to entries of similar resolution.

The Analysed column shows the number of residues for which the backbone conformation was analysed, and the total number of residues.

Mol	Chain	Analysed	Favoured	Allowed	Outliers	Percentiles	
1	A	372/439 (85%)	362 (97%)	9 (2%)	1 (0%)	41	43

All (1) Ramachandran outliers are listed below:

Mol	Chain	Res	Type
1	A	121	GLY

5.3.2 Protein sidechains ⓘ

In the following table, the Percentiles column shows the percent sidechain outliers of the chain as a percentile score with respect to all X-ray entries followed by that with respect to entries of similar resolution.

The Analysed column shows the number of residues for which the sidechain conformation was analysed, and the total number of residues.

Mol	Chain	Analysed	Rotameric	Outliers	Percentiles	
1	A	284/328 (87%)	277 (98%)	7 (2%)	47	57

All (7) residues with a non-rotameric sidechain are listed below:

Mol	Chain	Res	Type
1	A	54	CYS
1	A	76	ASN
1	A	85	LEU
1	A	242	VAL
1	A	251	TYR
1	A	308	ASN
1	A	373	THR

Some sidechains can be flipped to improve hydrogen bonding and reduce clashes. All (1) such sidechains are listed below:

Mol	Chain	Res	Type
1	A	24	ASN

5.3.3 RNA ⓘ

There are no RNA molecules in this entry.

5.4 Non-standard residues in protein, DNA, RNA chains [i](#)

There are no non-standard protein/DNA/RNA residues in this entry.

5.5 Carbohydrates [i](#)

There are no monosaccharides in this entry.

5.6 Ligand geometry [i](#)

Of 7 ligands modelled in this entry, 2 are monoatomic - leaving 5 for Mogul analysis.

In the following table, the Counts columns list the number of bonds (or angles) for which Mogul statistics could be retrieved, the number of bonds (or angles) that are observed in the model and the number of bonds (or angles) that are defined in the Chemical Component Dictionary. The Link column lists molecule types, if any, to which the group is linked. The Z score for a bond length (or angle) is the number of standard deviations the observed value is removed from the expected value. A bond length (or angle) with $|Z| > 2$ is considered an outlier worth inspection. RMSZ is the root-mean-square of all Z scores of the bond lengths (or angles).

Mol	Type	Chain	Res	Link	Bond lengths			Bond angles		
					Counts	RMSZ	# Z > 2	Counts	RMSZ	# Z > 2
5	FLC	A	504	-	3,12,12	3.35	3 (100%)	3,17,17	2.44	2 (66%)
5	FLC	A	506	-	3,12,12	3.71	3 (100%)	3,17,17	2.26	2 (66%)
5	FLC	A	505	-	3,12,12	3.44	3 (100%)	3,17,17	2.71	2 (66%)
2	NAG	A	501	-	15,15,15	0.26	0	21,21,21	0.28	0
5	FLC	A	507	-	3,12,12	3.53	3 (100%)	3,17,17	2.71	2 (66%)

In the following table, the Chirals column lists the number of chiral outliers, the number of chiral centers analysed, the number of these observed in the model and the number defined in the Chemical Component Dictionary. Similar counts are reported in the Torsion and Rings columns. '-' means no outliers of that kind were identified.

Mol	Type	Chain	Res	Link	Chirals	Torsions	Rings
5	FLC	A	504	-	-	5/6/16/16	-
5	FLC	A	506	-	-	1/6/16/16	-
5	FLC	A	505	-	-	3/6/16/16	-
2	NAG	A	501	-	-	2/6/26/26	0/1/1/1
5	FLC	A	507	-	-	6/6/16/16	-

All (12) bond length outliers are listed below:

Mol	Chain	Res	Type	Atoms	Z	Observed(Å)	Ideal(Å)
5	A	506	FLC	CG-CB	-4.25	1.48	1.54
5	A	507	FLC	CG-CB	-3.86	1.49	1.54
5	A	504	FLC	CA-CB	-3.78	1.49	1.54
5	A	506	FLC	CA-CB	-3.67	1.49	1.54
5	A	505	FLC	CA-CB	-3.66	1.49	1.54
5	A	507	FLC	CA-CB	-3.50	1.50	1.54
5	A	505	FLC	CG-CB	-3.35	1.50	1.54
5	A	505	FLC	OHB-CB	-3.30	1.38	1.43
5	A	507	FLC	OHB-CB	-3.20	1.38	1.43
5	A	504	FLC	OHB-CB	-3.18	1.38	1.43
5	A	506	FLC	OHB-CB	-3.12	1.38	1.43
5	A	504	FLC	CG-CB	-3.03	1.50	1.54

All (8) bond angle outliers are listed below:

Mol	Chain	Res	Type	Atoms	Z	Observed(°)	Ideal(°)
5	A	507	FLC	CB-CG-CGC	4.23	121.76	114.98
5	A	505	FLC	CB-CG-CGC	4.09	121.54	114.98
5	A	504	FLC	CB-CA-CAC	3.54	120.65	114.98
5	A	506	FLC	CB-CG-CGC	3.34	120.34	114.98
5	A	504	FLC	CB-CG-CGC	2.32	118.69	114.98
5	A	505	FLC	CB-CA-CAC	2.15	118.43	114.98
5	A	506	FLC	CB-CA-CAC	2.04	118.24	114.98
5	A	507	FLC	CB-CA-CAC	2.02	118.21	114.98

There are no chirality outliers.

All (17) torsion outliers are listed below:

Mol	Chain	Res	Type	Atoms
5	A	504	FLC	CA-CB-CG-CGC
5	A	504	FLC	CBC-CB-CG-CGC
5	A	504	FLC	OHB-CB-CG-CGC
5	A	507	FLC	CAC-CA-CB-CBC
5	A	507	FLC	CA-CB-CG-CGC
5	A	507	FLC	CBC-CB-CG-CGC
5	A	507	FLC	OHB-CB-CG-CGC
2	A	501	NAG	O5-C5-C6-O6
2	A	501	NAG	C4-C5-C6-O6
5	A	507	FLC	CAC-CA-CB-CG
5	A	507	FLC	CAC-CA-CB-OHB
5	A	505	FLC	CAC-CA-CB-CG
5	A	505	FLC	CAC-CA-CB-OHB

Continued on next page...

Continued from previous page...

Mol	Chain	Res	Type	Atoms
5	A	506	FLC	CAC-CA-CB-CBC
5	A	504	FLC	CAC-CA-CB-CBC
5	A	505	FLC	CAC-CA-CB-CBC
5	A	504	FLC	CAC-CA-CB-OHB

There are no ring outliers.

5 monomers are involved in 15 short contacts:

Mol	Chain	Res	Type	Clashes	Symm-Clashes
5	A	504	FLC	3	1
5	A	506	FLC	5	0
5	A	505	FLC	1	0
2	A	501	NAG	1	0
5	A	507	FLC	4	0

5.7 Other polymers [i](#)

There are no such residues in this entry.

5.8 Polymer linkage issues [i](#)

There are no chain breaks in this entry.

6 Fit of model and data [i](#)

6.1 Protein, DNA and RNA chains [i](#)

In the following table, the column labelled ‘#RSRZ> 2’ contains the number (and percentage) of RSRZ outliers, followed by percent RSRZ outliers for the chain as percentile scores relative to all X-ray entries and entries of similar resolution. The OWAB column contains the minimum, median, 95th percentile and maximum values of the occupancy-weighted average B-factor per residue. The column labelled ‘Q< 0.9’ lists the number of (and percentage) of residues with an average occupancy less than 0.9.

Mol	Chain	Analysed	<RSRZ>	#RSRZ>2	OWAB(Å ²)	Q<0.9
1	A	374/439 (85%)	-0.36	9 (2%) 59 59	21, 31, 56, 87	0

All (9) RSRZ outliers are listed below:

Mol	Chain	Res	Type	RSRZ
1	A	311	SER	5.0
1	A	309	GLY	5.0
1	A	75	GLY	3.4
1	A	310	ALA	3.4
1	A	76	ASN	2.9
1	A	121	GLY	2.7
1	A	2	ALA	2.3
1	A	77	THR	2.3
1	A	308	ASN	2.3

6.2 Non-standard residues in protein, DNA, RNA chains [i](#)

There are no non-standard protein/DNA/RNA residues in this entry.

6.3 Carbohydrates [i](#)

There are no monosaccharides in this entry.

6.4 Ligands [i](#)

In the following table, the Atoms column lists the number of modelled atoms in the group and the number defined in the chemical component dictionary. The B-factors column lists the minimum, median, 95th percentile and maximum values of B factors of atoms in the group. The column labelled ‘Q< 0.9’ lists the number of atoms with occupancy less than 0.9.

Mol	Type	Chain	Res	Atoms	RSCC	RSR	B-factors(\AA^2)	Q<0.9
5	FLC	A	507	13/13	0.25	0.67	107,116,127,128	0
2	NAG	A	501	15/15	0.28	0.30	80,91,100,103	0
5	FLC	A	506	13/13	0.47	0.60	100,103,111,113	0
5	FLC	A	505	13/13	0.61	0.42	102,109,111,112	0
5	FLC	A	504	13/13	0.70	0.48	104,106,108,110	0
3	MG	A	502	1/1	0.96	0.08	52,52,52,52	0
4	CA	A	503	1/1	0.98	0.06	48,48,48,48	0

6.5 Other polymers [i](#)

There are no such residues in this entry.