



# Full wwPDB X-ray Structure Validation Report ⓘ

May 13, 2020 – 04:01 pm BST

PDB ID : 3TYQ  
Title : SAR development and discovery of potent indole-based inhibitors of the hepatitis c virus NS5B polymerase  
Authors : Lesburg, C.A.; Chen, K.X.  
Deposited on : 2011-09-26  
Resolution : 1.60 Å(reported)

This is a Full wwPDB X-ray Structure Validation Report for a publicly released PDB entry.

We welcome your comments at [validation@mail.wwpdb.org](mailto:validation@mail.wwpdb.org)

A user guide is available at

<https://www.wwpdb.org/validation/2017/XrayValidationReportHelp>

with specific help available everywhere you see the ⓘ symbol.

---

The following versions of software and data (see [references ⓘ](#)) were used in the production of this report:

MolProbity : 4.02b-467  
Mogul : 1.8.5 (274361), CSD as541be (2020)  
Xtriage (Phenix) : 1.13  
EDS : 2.11  
buster-report : 1.1.7 (2018)  
Percentile statistics : 20191225.v01 (using entries in the PDB archive December 25th 2019)  
Refmac : 5.8.0158  
CCP4 : 7.0.044 (Gargrove)  
Ideal geometry (proteins) : Engh & Huber (2001)  
Ideal geometry (DNA, RNA) : Parkinson et al. (1996)  
Validation Pipeline (wwPDB-VP) : 2.11

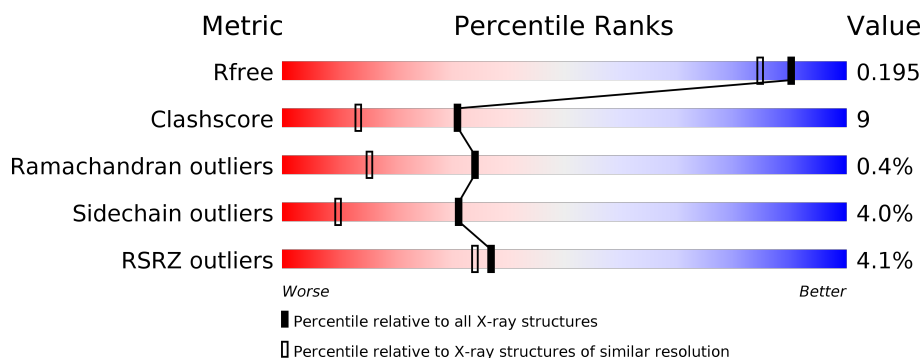
# 1 Overall quality at a glance

The following experimental techniques were used to determine the structure:

## *X-RAY DIFFRACTION*

The reported resolution of this entry is 1.60 Å.

Percentile scores (ranging between 0-100) for global validation metrics of the entry are shown in the following graphic. The table shows the number of entries on which the scores are based.



Metric	Whole archive (#Entries)	Similar resolution (#Entries, resolution range(Å))
$R_{free}$	130704	3398 (1.60-1.60)
Clashscore	141614	3665 (1.60-1.60)
Ramachandran outliers	138981	3564 (1.60-1.60)
Sidechain outliers	138945	3563 (1.60-1.60)
RSRZ outliers	127900	3321 (1.60-1.60)

The table below summarises the geometric issues observed across the polymeric chains and their fit to the electron density. The red, orange, yellow and green segments on the lower bar indicate the fraction of residues that contain outliers for  $\geq 3$ , 2, 1 and 0 types of geometric quality criteria respectively. A grey segment represents the fraction of residues that are not modelled. The numeric value for each fraction is indicated below the corresponding segment, with a dot representing fractions  $\leq 5\%$ . The upper red bar (where present) indicates the fraction of residues that have poor fit to the electron density. The numeric value is given above the bar.

Mol	Chain	Length	Quality of chain
1	A	576	<div> <div>2%</div> <div> <div></div> <div>87%</div> <div>9%</div> <div>..</div> </div> </div>
1	B	576	<div> <div>6%</div> <div> <div></div> <div>83%</div> <div>11%</div> <div>..</div> </div> </div>

The following table lists non-polymeric compounds, carbohydrate monomers and non-standard residues in protein, DNA, RNA chains that are outliers for geometric or electron-density-fit criteria:

Mol	Type	Chain	Res	Chirality	Geometry	Clashes	Electron density
3	PO4	B	578	-	X	X	-

## 2 Entry composition

There are 4 unique types of molecules in this entry. The entry contains 10546 atoms, of which 0 are hydrogens and 0 are deuteriums.

In the tables below, the ZeroOcc column contains the number of atoms modelled with zero occupancy, the AltConf column contains the number of residues with at least one atom in alternate conformation and the Trace column contains the number of residues modelled with at most 2 atoms.

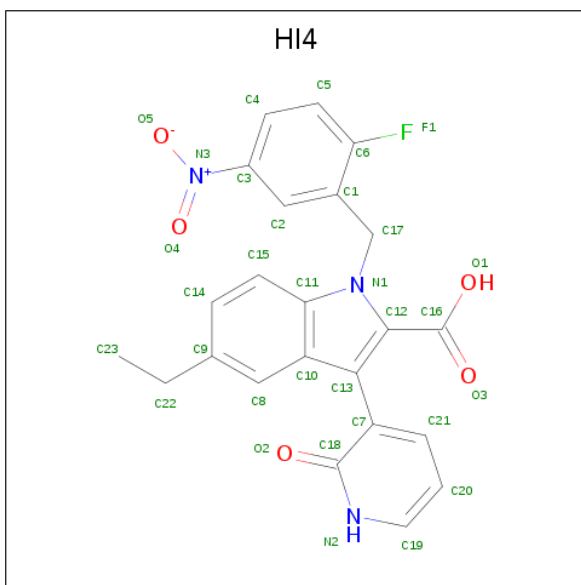
- Molecule 1 is a protein called RNA-directed RNA polymerase.

Mol	Chain	Residues	Atoms					ZeroOcc	AltConf	Trace
1	A	563	Total	C	N	O	S	0	5	0
			4419	2780	785	820	34			
1	B	558	Total	C	N	O	S	0	4	0
			4371	2751	773	813	34			

There are 16 discrepancies between the modelled and reference sequences:

Chain	Residue	Modelled	Actual	Comment	Reference
A	440	GLY	GLU	CONFLICT	UNP O92972
A	520	ILE	THR	CONFLICT	UNP O92972
A	571	GLU	-	EXPRESSION TAG	UNP O92972
A	572	ASN	-	EXPRESSION TAG	UNP O92972
A	573	LEU	-	EXPRESSION TAG	UNP O92972
A	574	TYR	-	EXPRESSION TAG	UNP O92972
A	575	PHE	-	EXPRESSION TAG	UNP O92972
A	576	GLN	-	EXPRESSION TAG	UNP O92972
B	440	GLY	GLU	CONFLICT	UNP O92972
B	520	ILE	THR	CONFLICT	UNP O92972
B	571	GLU	-	EXPRESSION TAG	UNP O92972
B	572	ASN	-	EXPRESSION TAG	UNP O92972
B	573	LEU	-	EXPRESSION TAG	UNP O92972
B	574	TYR	-	EXPRESSION TAG	UNP O92972
B	575	PHE	-	EXPRESSION TAG	UNP O92972
B	576	GLN	-	EXPRESSION TAG	UNP O92972

- Molecule 2 is 5-ethyl-1-(2-fluoro-5-nitrobenzyl)-3-(2-oxo-1,2-dihydropyridin-3-yl)-1H-indole-2-carboxylic acid (three-letter code: HI4) (formula: C<sub>23</sub>H<sub>18</sub>FN<sub>3</sub>O<sub>5</sub>).



Mol	Chain	Residues	Atoms				ZeroOcc	AltConf
2	A	1	Total	C	N	O	0	1
			62	46	6	10		
2	B	1	Total	C	N	O	0	1
			62	46	6	10		

- Molecule 3 is PHOSPHATE ION (three-letter code: PO4) (formula: O<sub>4</sub>P).



Mol	Chain	Residues	Atoms			ZeroOcc	AltConf
3	A	1	Total	O	P	0	0
			5	4	1		
3	A	1	Total	O	P	0	0
			5	4	1		

Continued on next page...

*Continued from previous page...*

Mol	Chain	Residues	Atoms			ZeroOcc	AltConf
3	B	1	Total	O	P	0	0
			5	4	1		

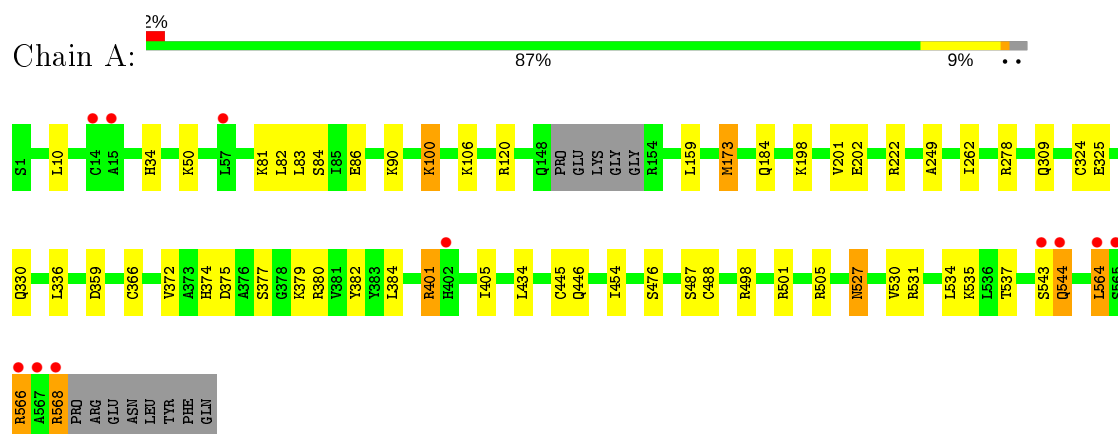
- Molecule 4 is water.

Mol	Chain	Residues	Atoms		ZeroOcc	AltConf
4	A	880	Total	O	0	0
			880	880		
4	B	737	Total	O	0	0
			737	737		

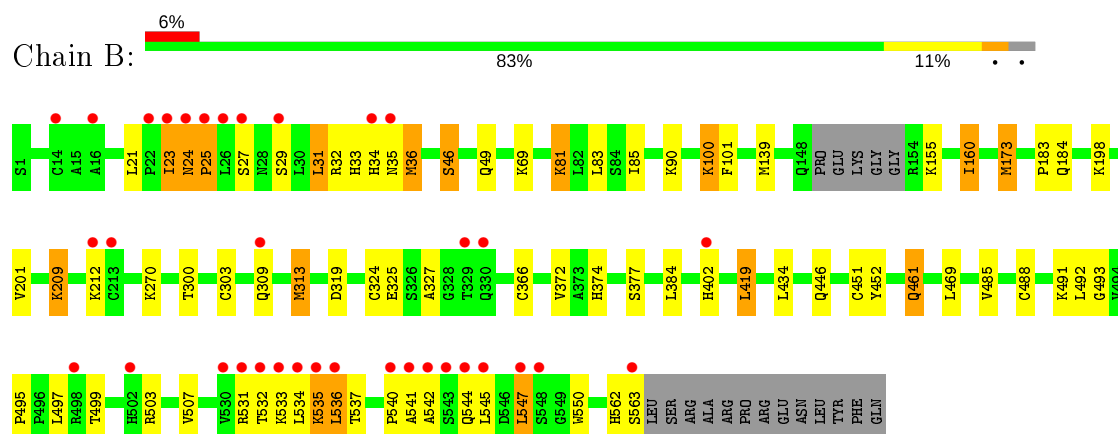
### 3 Residue-property plots [i](#)

These plots are drawn for all protein, RNA and DNA chains in the entry. The first graphic for a chain summarises the proportions of the various outlier classes displayed in the second graphic. The second graphic shows the sequence view annotated by issues in geometry and electron density. Residues are color-coded according to the number of geometric quality criteria for which they contain at least one outlier: green = 0, yellow = 1, orange = 2 and red = 3 or more. A red dot above a residue indicates a poor fit to the electron density ( $RSRZ > 2$ ). Stretches of 2 or more consecutive residues without any outlier are shown as a green connector. Residues present in the sample, but not in the model, are shown in grey.

#### • Molecule 1: RNA-directed RNA polymerase



#### • Molecule 1: RNA-directed RNA polymerase



## 4 Data and refinement statistics

Property	Value	Source
Space group	P 21 21 21	Depositor
Cell constants a, b, c, $\alpha$ , $\beta$ , $\gamma$	90.03Å 106.86Å 134.55Å 90.00° 90.00° 90.00°	Depositor
Resolution (Å)	20.00 – 1.60 41.35 – 1.60	Depositor EDS
% Data completeness (in resolution range)	99.1 (20.00-1.60) 99.4 (41.35-1.60)	Depositor EDS
$R_{merge}$	0.05	Depositor
$R_{sym}$	(Not available)	Depositor
$\langle I/\sigma(I) \rangle$ <sup>1</sup>	4.27 (at 1.60Å)	Xtriage
Refinement program	BUSTER-TNT 2.1.1	Depositor
R, $R_{free}$	0.168 , 0.195 0.165 , 0.195	Depositor DCC
$R_{free}$ test set	8511 reflections (5.01%)	wwPDB-VP
Wilson B-factor (Å <sup>2</sup> )	17.2	Xtriage
Anisotropy	0.470	Xtriage
Bulk solvent $k_{sol}$ (e/Å <sup>3</sup> ), $B_{sol}$ (Å <sup>2</sup> )	0.36 , 56.7	EDS
L-test for twinning <sup>2</sup>	$\langle  L  \rangle = 0.50$ , $\langle L^2 \rangle = 0.34$	Xtriage
Estimated twinning fraction	No twinning to report.	Xtriage
$F_o, F_c$ correlation	0.97	EDS
Total number of atoms	10546	wwPDB-VP
Average B, all atoms (Å <sup>2</sup> )	24.0	wwPDB-VP

Xtriage's analysis on translational NCS is as follows: *The largest off-origin peak in the Patterson function is 2.85% of the height of the origin peak. No significant pseudotranslation is detected.*

<sup>1</sup>Intensities estimated from amplitudes.

<sup>2</sup>Theoretical values of  $\langle |L| \rangle$ ,  $\langle L^2 \rangle$  for acentric reflections are 0.5, 0.333 respectively for untwinned datasets, and 0.375, 0.2 for perfectly twinned datasets.



## 5 Model quality [i](#)

### 5.1 Standard geometry [i](#)

Bond lengths and bond angles in the following residue types are not validated in this section: PO4, HI4

The Z score for a bond length (or angle) is the number of standard deviations the observed value is removed from the expected value. A bond length (or angle) with  $|Z| > 5$  is considered an outlier worth inspection. RMSZ is the root-mean-square of all Z scores of the bond lengths (or angles).

Mol	Chain	Bond lengths		Bond angles	
		RMSZ	$\# Z  > 5$	RMSZ	$\# Z  > 5$
1	A	0.67	1/4513 (0.0%)	0.78	2/6122 (0.0%)
1	B	0.61	0/4465	0.76	3/6058 (0.0%)
All	All	0.64	1/8978 (0.0%)	0.77	5/12180 (0.0%)

All (1) bond length outliers are listed below:

Mol	Chain	Res	Type	Atoms	Z	Observed(Å)	Ideal(Å)
1	A	173	MET	SD-CE	-5.09	1.49	1.77

All (5) bond angle outliers are listed below:

Mol	Chain	Res	Type	Atoms	Z	Observed(°)	Ideal(°)
1	B	24	ASN	C-N-CD	-7.88	103.27	120.60
1	B	31	LEU	CA-CB-CG	6.31	129.82	115.30
1	B	173	MET	CG-SD-CE	-6.15	90.36	100.20
1	A	173	MET	CG-SD-CE	-5.55	91.31	100.20
1	A	401	ARG	NE-CZ-NH1	-5.01	117.79	120.30

There are no chirality outliers.

There are no planarity outliers.

### 5.2 Too-close contacts [i](#)

In the following table, the Non-H and H(model) columns list the number of non-hydrogen atoms and hydrogen atoms in the chain respectively. The H(added) column lists the number of hydrogen atoms added and optimized by MolProbity. The Clashes column lists the number of clashes within the asymmetric unit, whereas Symm-Clashes lists symmetry related clashes.

Mol	Chain	Non-H	H(model)	H(added)	Clashes	Symm-Clashes
1	A	4419	0	4434	57	1
1	B	4371	0	4379	98	0
2	A	62	0	34	4	0
2	B	62	0	34	4	0
3	A	10	0	0	1	0
3	B	5	0	0	2	0
4	A	880	0	0	36	0
4	B	737	0	0	21	1
All	All	10546	0	8881	163	1

The all-atom clashscore is defined as the number of clashes found per 1000 atoms (including hydrogen atoms). The all-atom clashscore for this structure is 9.

All (163) close contacts within the same asymmetric unit are listed below, sorted by their clash magnitude.

Atom-1	Atom-2	Interatomic distance (Å)	Clash overlap (Å)
1:B:24:ASN:HD21	1:B:27:SER:H	1.03	0.95
1:B:160:ILE:HG12	4:B:1613:HOH:O	1.71	0.91
1:B:434:LEU:HD12	1:B:507:VAL:HG13	1.54	0.90
1:A:405:ILE:HG13	1:A:446:GLN:HE21	1.38	0.89
1:B:24:ASN:ND2	1:B:27:SER:H	1.74	0.86
1:A:527:ASN:HD21	1:A:534:LEU:H	1.22	0.85
1:B:139:MET:O	4:B:1613:HOH:O	1.95	0.83
1:B:461:GLN:HG2	1:B:541:ALA:HB3	1.59	0.82
1:A:530:VAL:HG12	4:A:1606:HOH:O	1.80	0.80
1:A:201[A]:VAL:HG22	1:A:384:LEU:HG	1.64	0.80
1:B:23:ILE:HD12	1:B:23:ILE:H	1.44	0.80
1:A:505:ARG:NH1	4:A:1606:HOH:O	2.14	0.79
1:B:100:LYS:HG3	1:B:101:PHE:CD1	2.18	0.79
1:B:452:TYR:HD2	1:B:563:SER:HB2	1.49	0.77
1:B:25:PRO:HB2	4:B:1612:HOH:O	1.85	0.76
1:A:544:GLN:HG3	4:A:1498:HOH:O	1.85	0.76
1:B:309:GLN:HE22	1:B:327:ALA:HB2	1.50	0.75
1:B:488:CYS:HB2	4:B:1168:HOH:O	1.86	0.74
3:B:578:PO4:O2	4:B:1475:HOH:O	2.08	0.72
1:A:359:ASP:HB2	4:A:1441:HOH:O	1.89	0.72
1:A:84:SER:OG	1:A:86:GLU:HG2	1.89	0.71
1:B:461:GLN:H	1:B:461:GLN:NE2	1.89	0.71
1:B:461:GLN:HB3	1:B:542:ALA:HA	1.73	0.70
1:B:563:SER:HB3	4:B:710:HOH:O	1.91	0.70
1:A:405:ILE:HG13	1:A:446:GLN:NE2	2.04	0.70
1:B:461:GLN:HG2	1:B:541:ALA:CB	2.21	0.69

*Continued on next page...*

*Continued from previous page...*

Atom-1	Atom-2	Interatomic distance (Å)	Clash overlap (Å)
1:A:405:ILE:HD12	1:A:446:GLN:HG3	1.73	0.69
1:A:222:ARG:HD3	4:A:1351:HOH:O	1.94	0.68
1:A:531:ARG:HD2	4:A:840:HOH:O	1.93	0.68
1:B:531:ARG:HG3	1:B:531:ARG:HH11	1.59	0.68
1:B:452:TYR:CD2	1:B:563:SER:HB2	2.29	0.68
1:B:461:GLN:H	1:B:461:GLN:HE21	1.43	0.66
1:B:46:SER:HA	1:B:49:GLN:HE21	1.61	0.66
1:B:503:ARG:O	1:B:507:VAL:HG23	1.96	0.66
1:A:90:LYS:HE2	4:A:1488:HOH:O	1.96	0.66
1:B:531:ARG:NH1	1:B:531:ARG:HG3	2.09	0.65
1:A:488:CYS:HB2	4:A:1153:HOH:O	1.96	0.65
1:A:90:LYS:HG2	4:A:1505:HOH:O	1.96	0.65
1:B:535:LYS:HG2	1:B:537:THR:HG23	1.79	0.65
1:B:24:ASN:HD21	1:B:27:SER:N	1.87	0.64
1:B:32:ARG:HD3	1:B:493:GLY:O	1.97	0.64
1:A:50:LYS:HD3	4:A:1557:HOH:O	1.98	0.64
1:B:309:GLN:OE1	4:B:749:HOH:O	2.13	0.64
1:A:501:ARG:NH2	4:A:1609:HOH:O	1.85	0.63
1:B:488:CYS:O	1:B:492:LEU:HD23	1.98	0.63
1:A:106:LYS:HD2	4:A:817:HOH:O	1.98	0.62
1:A:498:ARG:HB3	4:A:1609:HOH:O	1.99	0.62
1:A:198:LYS:O	1:A:201[B]:VAL:HG12	1.99	0.62
1:B:545:LEU:HB3	1:B:547:LEU:CD2	2.29	0.61
1:B:160:ILE:CG1	4:B:1613:HOH:O	2.39	0.61
1:A:445:CYS:SG	1:A:454:ILE:HD12	2.41	0.61
2:A:577[A]:HI4:C16	2:A:577[A]:HI4:H2	2.31	0.60
1:A:405:ILE:CG1	1:A:446:GLN:HE21	2.13	0.60
1:B:535:LYS:HD3	1:B:537:THR:HG23	1.84	0.60
1:A:568:ARG:HG2	4:A:999:HOH:O	2.01	0.59
1:B:23:ILE:HD12	1:B:23:ILE:N	2.15	0.59
1:B:434:LEU:HD12	1:B:507:VAL:CG1	2.32	0.59
1:B:535:LYS:O	1:B:536:LEU:HB2	2.02	0.59
1:B:309:GLN:NE2	1:B:327:ALA:HB2	2.16	0.58
1:B:545:LEU:HB3	1:B:547:LEU:HD21	1.84	0.58
1:A:325:GLU:HG3	4:A:861:HOH:O	2.03	0.58
1:A:498:ARG:NH1	4:A:1214:HOH:O	2.26	0.58
1:B:492:LEU:HD22	1:B:492:LEU:N	2.17	0.58
1:B:434:LEU:CD1	1:B:507:VAL:HG13	2.28	0.58
1:A:498:ARG:CB	4:A:1609:HOH:O	2.52	0.57
1:A:262:ILE:HD11	4:A:1313:HOH:O	2.03	0.57
1:B:201:VAL:HG22	1:B:384:LEU:HG	1.87	0.57

*Continued on next page...*

*Continued from previous page...*

Atom-1	Atom-2	Interatomic distance (Å)	Clash overlap (Å)
1:B:34:HIS:HD2	4:B:1424:HOH:O	1.87	0.56
2:B:577[A]:HI4:C16	2:B:577[A]:HI4:H2	2.36	0.56
1:B:34:HIS:CD2	1:B:35:ASN:ND2	2.75	0.55
1:B:535:LYS:CD	1:B:537:THR:HG23	2.37	0.55
1:A:106:LYS:HG2	4:A:1178:HOH:O	2.06	0.55
1:A:198:LYS:HE2	4:A:969:HOH:O	2.07	0.54
1:B:535:LYS:CG	1:B:537:THR:HG23	2.37	0.54
2:B:577[A]:HI4:O1	2:B:577[A]:HI4:H2	2.07	0.54
1:B:366[B]:CYS:HA	2:B:577[B]:HI4:H5	1.88	0.54
1:B:81:LYS:NZ	1:B:81:LYS:HB3	2.23	0.53
1:A:198:LYS:NZ	4:A:1254:HOH:O	2.38	0.53
1:A:34:HIS:HD2	4:A:779:HOH:O	1.92	0.53
1:B:23:ILE:H	1:B:23:ILE:CD1	2.05	0.53
1:A:375:ASP:OD2	1:A:379:LYS:HG2	2.09	0.52
3:B:578:PO4:P	4:B:1475:HOH:O	2.68	0.52
1:B:24:ASN:OD1	1:B:27:SER:HB3	2.10	0.52
1:B:32:ARG:HD2	1:B:32:ARG:N	2.25	0.52
3:A:578:PO4:P	4:A:1606:HOH:O	2.67	0.52
1:B:300:THR:HA	1:B:313:MET:HE3	1.92	0.52
1:B:33:HIS:O	1:B:36:MET:HG3	2.10	0.51
1:B:100:LYS:HD3	1:B:101:PHE:CE1	2.45	0.51
1:B:374:HIS:HE1	4:B:1254:HOH:O	1.93	0.51
1:B:547:LEU:HD12	1:B:550:TRP:CE2	2.46	0.51
1:A:120:ARG:HD3	4:A:1568:HOH:O	2.10	0.51
1:B:531:ARG:HH11	1:B:531:ARG:CG	2.23	0.51
1:B:309:GLN:CG	1:B:325:GLU:HB3	2.41	0.50
1:B:461:GLN:CG	1:B:541:ALA:HB3	2.35	0.50
1:B:69:LYS:HE3	4:B:1053:HOH:O	2.11	0.50
1:A:100:LYS:NZ	4:A:1103:HOH:O	2.45	0.49
1:B:325:GLU:HG3	4:B:1012:HOH:O	2.12	0.49
1:B:183:PRO:HG2	4:B:990:HOH:O	2.12	0.49
2:A:577[A]:HI4:O3	2:A:577[A]:HI4:H2	2.12	0.49
1:A:375:ASP:CG	1:A:379:LYS:HG2	2.33	0.49
1:B:100:LYS:HG3	1:B:101:PHE:CE1	2.48	0.49
1:B:309:GLN:O	1:B:324:CYS:HB2	2.13	0.49
1:A:535:LYS:HE2	1:A:537:THR:CG2	2.43	0.49
1:B:270:LYS:HE2	4:B:1537:HOH:O	2.13	0.48
1:B:535:LYS:HD3	1:B:537:THR:CG2	2.44	0.48
1:A:434:LEU:HD23	1:A:434:LEU:C	2.34	0.48
1:B:540:PRO:HB2	4:B:987:HOH:O	2.12	0.48
1:A:82:LEU:HD13	1:A:249:ALA:HB2	1.94	0.48

*Continued on next page...*

*Continued from previous page...*

Atom-1	Atom-2	Interatomic distance (Å)	Clash overlap (Å)
1:B:491:LYS:HE3	4:B:1414:HOH:O	2.13	0.48
1:A:566:ARG:NH2	4:A:1129:HOH:O	2.46	0.48
1:B:34:HIS:CD2	1:B:35:ASN:HD22	2.31	0.47
1:B:35:ASN:HB2	4:B:1183:HOH:O	2.14	0.47
1:B:100:LYS:CD	1:B:101:PHE:CE1	2.98	0.47
1:A:366[B]:CYS:SG	2:A:577[B]:HI4:C11	3.03	0.46
1:A:530:VAL:CG1	4:A:1606:HOH:O	2.51	0.46
1:B:300:THR:HA	1:B:313:MET:CE	2.45	0.46
1:B:492:LEU:CD2	1:B:492:LEU:N	2.78	0.46
1:B:85:ILE:HG12	1:B:173:MET:SD	2.56	0.46
1:B:531:ARG:NH2	4:B:1039:HOH:O	2.49	0.46
1:A:380:ARG:HD3	4:A:1340:HOH:O	2.15	0.45
1:B:309:GLN:HG2	1:B:325:GLU:HB3	1.97	0.45
1:B:535:LYS:HG2	1:B:536:LEU:N	2.32	0.45
1:B:545:LEU:CB	1:B:547:LEU:HD21	2.46	0.45
1:A:530:VAL:CB	4:A:1606:HOH:O	2.65	0.45
1:B:446:GLN:NE2	1:B:451[B]:CYS:SG	2.83	0.45
1:B:419:LEU:CD2	1:B:485:VAL:HG11	2.47	0.45
1:A:309:GLN:O	1:A:324:CYS:HB2	2.17	0.44
1:A:330:GLN:HG2	4:A:719:HOH:O	2.16	0.44
1:A:501:ARG:HD3	4:A:1004:HOH:O	2.16	0.44
1:A:372:VAL:HG22	1:A:382:TYR:CD1	2.53	0.44
1:A:81:LYS:HE3	4:A:1206:HOH:O	2.17	0.44
1:A:278:ARG:NE	4:A:701:HOH:O	2.21	0.44
1:B:545:LEU:HD23	4:B:961:HOH:O	2.17	0.44
1:B:319:ASP:CB	2:B:577[A]:HI4:H5	2.47	0.44
1:B:33:HIS:CB	1:B:36:MET:HG3	2.47	0.44
1:A:564:LEU:HA	1:A:564:LEU:HD22	1.65	0.44
1:B:209:LYS:N	1:B:209:LYS:HD2	2.27	0.44
1:B:100:LYS:HB2	1:B:100:LYS:HE2	1.58	0.43
1:B:32:ARG:NH2	1:B:495:PRO:HG3	2.33	0.43
1:A:201[B]:VAL:HG13	1:A:202:GLU:N	2.33	0.43
1:B:100:LYS:CG	1:B:101:PHE:CE1	3.01	0.43
1:A:564:LEU:HD22	4:A:586:HOH:O	2.19	0.43
1:B:419:LEU:C	1:B:419:LEU:HD23	2.38	0.43
1:B:309:GLN:HG3	1:B:325:GLU:HB3	2.01	0.43
1:A:544:GLN:H	1:A:544:GLN:HG2	1.61	0.43
1:B:419:LEU:HD21	1:B:497:LEU:HD11	2.01	0.43
1:B:545:LEU:HB3	1:B:547:LEU:HD22	1.98	0.43
1:B:541:ALA:HA	1:B:544:GLN:CD	2.39	0.42
1:A:83:LEU:HB2	1:A:173:MET:HA	2.00	0.42

*Continued on next page...*

Continued from previous page...

Atom-1	Atom-2	Interatomic distance (Å)	Clash overlap (Å)
1:B:535:LYS:CD	1:B:537:THR:CG2	2.98	0.42
1:A:81:LYS:HE2	4:A:1531:HOH:O	2.19	0.42
1:B:32:ARG:CZ	1:B:495:PRO:HG3	2.50	0.42
1:B:303:CYS:SG	1:B:313:MET:CE	3.08	0.42
1:B:83:LEU:HB2	1:B:173:MET:HA	2.02	0.42
1:B:366[B]:CYS:SG	1:B:366[B]:CYS:O	2.77	0.41
2:A:577[B]:HI4:H5	4:A:1286:HOH:O	2.20	0.41
1:B:545:LEU:CB	1:B:547:LEU:CD2	2.99	0.41
1:B:33:HIS:HB3	1:B:36:MET:HG3	2.02	0.41
1:A:374:HIS:CD2	1:A:476:SER:HB2	2.55	0.41
1:B:24:ASN:HA	1:B:25:PRO:HD3	1.81	0.41
1:B:562:HIS:HB3	1:B:563:SER:H	1.56	0.41
1:A:401:ARG:HH11	1:A:401:ARG:HD3	1.69	0.41
1:B:198:LYS:NZ	4:B:1453:HOH:O	2.44	0.40

All (1) symmetry-related close contacts are listed below. The label for Atom-2 includes the symmetry operator and encoded unit-cell translations to be applied.

Atom-1	Atom-2	Interatomic distance (Å)	Clash overlap (Å)
1:A:401:ARG:NH1	4:B:1475:HOH:O[2_565]	1.95	0.25

## 5.3 Torsion angles

### 5.3.1 Protein backbone

In the following table, the Percentiles column shows the percent Ramachandran outliers of the chain as a percentile score with respect to all X-ray entries followed by that with respect to entries of similar resolution.

The Analysed column shows the number of residues for which the backbone conformation was analysed, and the total number of residues.

Mol	Chain	Analysed	Favoured	Allowed	Outliers	Percentiles	
1	A	564/576 (98%)	557 (99%)	7 (1%)	0	100	100
1	B	558/576 (97%)	544 (98%)	10 (2%)	4 (1%)	22	7
All	All	1122/1152 (97%)	1101 (98%)	17 (2%)	4 (0%)	34	15

All (4) Ramachandran outliers are listed below:

Mol	Chain	Res	Type
1	B	535	LYS
1	B	532	THR
1	B	536	LEU
1	B	25	PRO

### 5.3.2 Protein sidechains ⓘ

In the following table, the Percentiles column shows the percent sidechain outliers of the chain as a percentile score with respect to all X-ray entries followed by that with respect to entries of similar resolution.

The Analysed column shows the number of residues for which the sidechain conformation was analysed, and the total number of residues.

Mol	Chain	Analysed	Rotameric	Outliers	Percentiles	
1	A	484/490 (99%)	471 (97%)	13 (3%)	44	20
1	B	479/490 (98%)	454 (95%)	25 (5%)	23	6
All	All	963/980 (98%)	925 (96%)	38 (4%)	31	10

All (38) residues with a non-rotameric sidechain are listed below:

Mol	Chain	Res	Type
1	A	10	LEU
1	A	100	LYS
1	A	159	LEU
1	A	184	GLN
1	A	336	LEU
1	A	377	SER
1	A	487	SER
1	A	527	ASN
1	A	543	SER
1	A	544	GLN
1	A	564	LEU
1	A	566	ARG
1	A	568	ARG
1	B	21	LEU
1	B	23	ILE
1	B	29	SER
1	B	31	LEU
1	B	36	MET
1	B	46	SER
1	B	81	LYS

*Continued on next page...*

*Continued from previous page...*

Mol	Chain	Res	Type
1	B	90	LYS
1	B	100	LYS
1	B	155	LYS
1	B	160	ILE
1	B	184	GLN
1	B	209	LYS
1	B	212	LYS
1	B	313	MET
1	B	372	VAL
1	B	377	SER
1	B	402	HIS
1	B	419	LEU
1	B	461	GLN
1	B	469	LEU
1	B	499	THR
1	B	533	LYS
1	B	534	LEU
1	B	547	LEU

Some sidechains can be flipped to improve hydrogen bonding and reduce clashes. All (17) such sidechains are listed below:

Mol	Chain	Res	Type
1	A	34	HIS
1	A	35	ASN
1	A	49	GLN
1	A	309	GLN
1	A	374	HIS
1	A	446	GLN
1	A	514	GLN
1	A	527	ASN
1	A	544	GLN
1	B	24	ASN
1	B	34	HIS
1	B	35	ASN
1	B	49	GLN
1	B	374	HIS
1	B	436	GLN
1	B	446	GLN
1	B	461	GLN



### 5.3.3 RNA ⓘ

There are no RNA molecules in this entry.

## 5.4 Non-standard residues in protein, DNA, RNA chains ⓘ

There are no non-standard protein/DNA/RNA residues in this entry.

## 5.5 Carbohydrates ⓘ

There are no carbohydrates in this entry.

## 5.6 Ligand geometry ⓘ

7 ligands are modelled in this entry.

In the following table, the Counts columns list the number of bonds (or angles) for which Mogul statistics could be retrieved, the number of bonds (or angles) that are observed in the model and the number of bonds (or angles) that are defined in the Chemical Component Dictionary. The Link column lists molecule types, if any, to which the group is linked. The Z score for a bond length (or angle) is the number of standard deviations the observed value is removed from the expected value. A bond length (or angle) with  $|Z| > 2$  is considered an outlier worth inspection. RMSZ is the root-mean-square of all Z scores of the bond lengths (or angles).

Mol	Type	Chain	Res	Link	Bond lengths			Bond angles		
					Counts	RMSZ	# $ Z  > 2$	Counts	RMSZ	# $ Z  > 2$
2	HI4	A	577[A]	-	26,34,35	1.58	5 (19%)	30,49,51	1.07	2 (6%)
2	HI4	B	577[A]	-	26,34,35	1.55	6 (23%)	30,49,51	1.09	2 (6%)
2	HI4	B	577[B]	-	26,34,35	1.50	6 (23%)	30,49,51	1.09	2 (6%)
3	PO4	A	579	-	4,4,4	1.66	1 (25%)	6,6,6	0.78	0
3	PO4	B	578	-	4,4,4	3.03	2 (50%)	6,6,6	1.86	2 (33%)
2	HI4	A	577[B]	-	26,34,35	1.57	5 (19%)	30,49,51	1.07	2 (6%)
3	PO4	A	578	-	4,4,4	2.78	3 (75%)	6,6,6	0.63	0

In the following table, the Chirals column lists the number of chiral outliers, the number of chiral centers analysed, the number of these observed in the model and the number defined in the Chemical Component Dictionary. Similar counts are reported in the Torsion and Rings columns. '-' means no outliers of that kind were identified.

Mol	Type	Chain	Res	Link	Chirals	Torsions	Rings
2	HI4	A	577[A]	-	-	0/12/18/18	0/4/4/4

*Continued on next page...*

*Continued from previous page...*

Mol	Type	Chain	Res	Link	Chirals	Torsions	Rings
2	HI4	B	577[A]	-	-	2/12/18/18	0/4/4/4
2	HI4	B	577[B]	-	-	2/12/18/18	0/4/4/4
2	HI4	A	577[B]	-	-	4/12/18/18	0/4/4/4

All (28) bond length outliers are listed below:

Mol	Chain	Res	Type	Atoms	Z	Observed(Å)	Ideal(Å)
3	B	578	PO4	P-O1	5.19	1.63	1.50
3	A	578	PO4	P-O1	3.94	1.60	1.50
2	B	577[A]	HI4	C18-N2	3.73	1.39	1.33
2	B	577[B]	HI4	C18-N2	3.64	1.39	1.33
2	A	577[A]	HI4	C18-N2	3.59	1.39	1.33
2	A	577[B]	HI4	C18-N2	3.55	1.39	1.33
2	A	577[A]	HI4	C18-C7	3.38	1.52	1.43
2	A	577[B]	HI4	C18-C7	3.34	1.52	1.43
2	A	577[B]	HI4	C20-C21	3.12	1.45	1.38
2	A	577[A]	HI4	C20-C21	3.12	1.45	1.38
3	A	578	PO4	P-O3	3.08	1.63	1.54
3	A	579	PO4	P-O1	2.98	1.57	1.50
2	B	577[A]	HI4	C18-C7	2.97	1.51	1.43
2	B	577[B]	HI4	C18-C7	2.94	1.51	1.43
2	B	577[A]	HI4	C7-C13	-2.89	1.44	1.49
2	B	577[B]	HI4	C7-C13	-2.70	1.44	1.49
2	B	577[A]	HI4	C20-C21	2.69	1.44	1.38
2	B	577[B]	HI4	C20-C21	2.64	1.44	1.38
2	A	577[A]	HI4	C7-C13	-2.44	1.45	1.49
3	B	578	PO4	P-O4	2.39	1.61	1.54
3	A	578	PO4	P-O4	2.38	1.61	1.54
2	A	577[B]	HI4	C7-C13	-2.35	1.45	1.49
2	B	577[A]	HI4	C13-C10	-2.30	1.41	1.47
2	B	577[B]	HI4	C13-C10	-2.26	1.41	1.47
2	A	577[B]	HI4	C15-C14	2.16	1.41	1.36
2	A	577[A]	HI4	C15-C14	2.14	1.41	1.36
2	B	577[A]	HI4	C15-C14	2.12	1.41	1.36
2	B	577[B]	HI4	C15-C14	2.10	1.41	1.36

All (10) bond angle outliers are listed below:

Mol	Chain	Res	Type	Atoms	Z	Observed(°)	Ideal(°)
2	B	577[B]	HI4	C19-N2-C18	2.94	123.47	116.43
2	A	577[B]	HI4	C19-N2-C18	2.88	123.31	116.43

*Continued on next page...*

*Continued from previous page...*

Mol	Chain	Res	Type	Atoms	Z	Observed(°)	Ideal(°)
2	B	577[A]	HI4	C19-N2-C18	2.87	123.30	116.43
3	B	578	PO4	O4-P-O2	-2.86	98.79	107.97
2	A	577[B]	HI4	C3-C2-C1	-2.84	119.55	121.16
2	A	577[A]	HI4	C19-N2-C18	2.83	123.20	116.43
3	B	578	PO4	O4-P-O3	2.80	116.97	107.97
2	B	577[A]	HI4	C3-C2-C1	-2.42	119.78	121.16
2	A	577[A]	HI4	C3-C2-C1	-2.40	119.80	121.16
2	B	577[B]	HI4	C20-C19-N2	-2.07	120.04	123.43

There are no chirality outliers.

All (8) torsion outliers are listed below:

Mol	Chain	Res	Type	Atoms
2	B	577[A]	HI4	C2-C3-N3-O4
2	B	577[A]	HI4	C4-C3-N3-O4
2	A	577[B]	HI4	C2-C3-N3-O4
2	A	577[B]	HI4	C4-C3-N3-O4
2	A	577[B]	HI4	C6-C1-C17-N1
2	A	577[B]	HI4	C2-C1-C17-N1
2	B	577[B]	HI4	C2-C3-N3-O4
2	B	577[B]	HI4	C4-C3-N3-O4

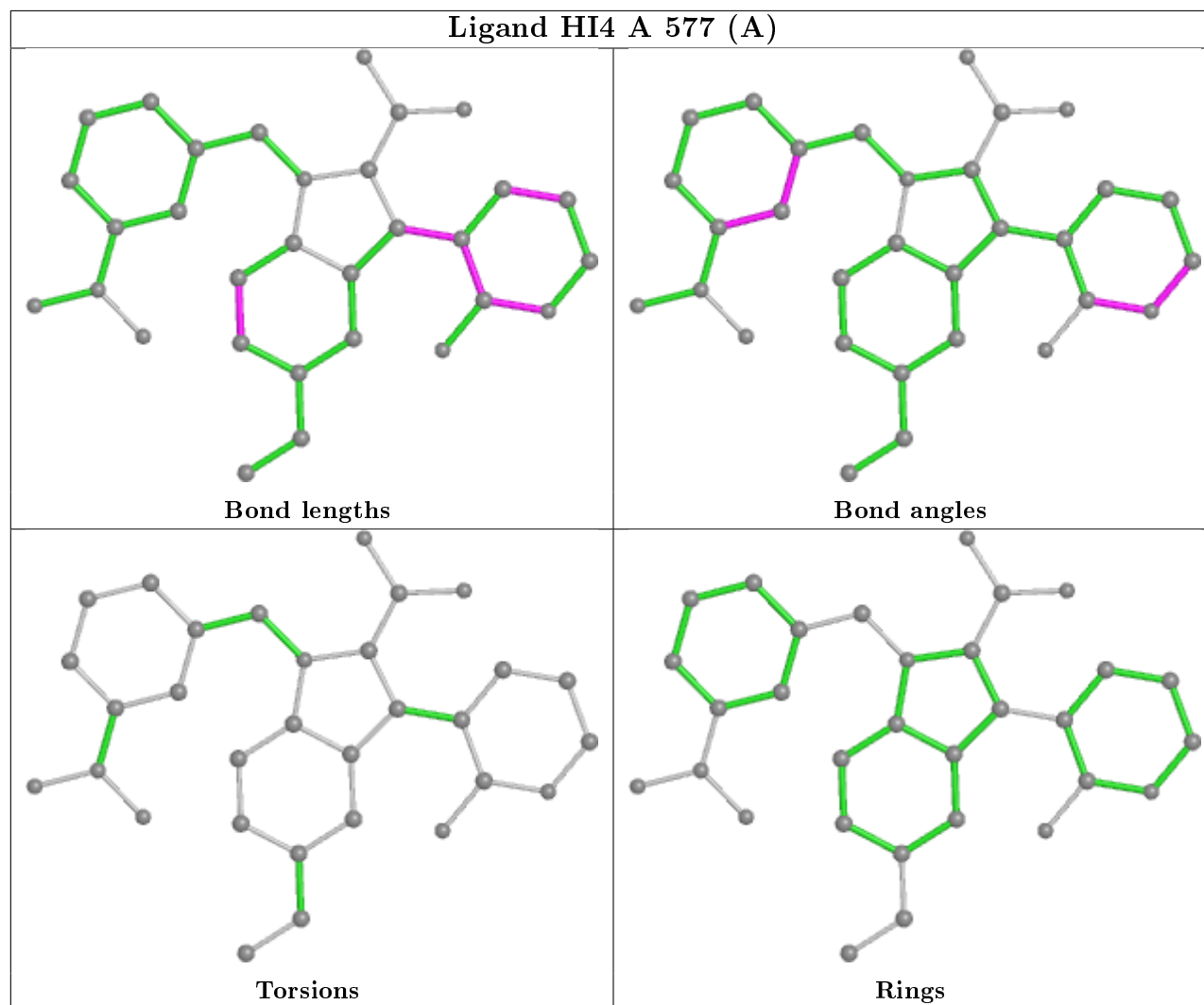
There are no ring outliers.

6 monomers are involved in 11 short contacts:

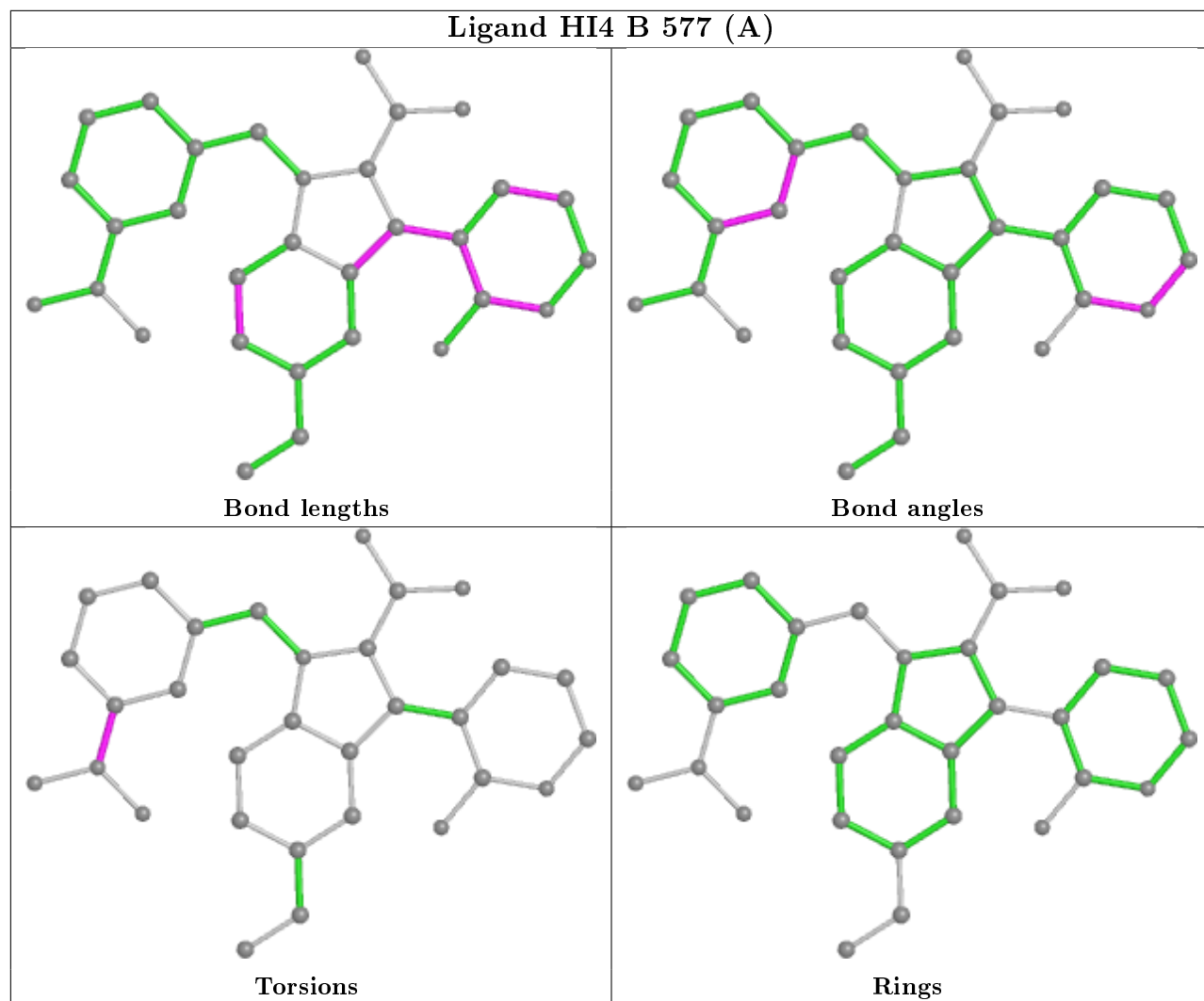
Mol	Chain	Res	Type	Clashes	Symm-Clashes
2	A	577[A]	HI4	2	0
2	B	577[A]	HI4	3	0
2	B	577[B]	HI4	1	0
3	B	578	PO4	2	0
2	A	577[B]	HI4	2	0
3	A	578	PO4	1	0

The following is a two-dimensional graphical depiction of Mogul quality analysis of bond lengths, bond angles, torsion angles, and ring geometry for all instances of the Ligand of Interest. In addition, ligands with molecular weight > 250 and outliers as shown on the validation Tables will also be included. For torsion angles, if less than 5% of the Mogul distribution of torsion angles is within 10 degrees of the torsion angle in question, then that torsion angle is considered an outlier. Any bond that is central to one or more torsion angles identified as an outlier by Mogul will be highlighted in the graph. For rings, the root-mean-square deviation (RMSD) between the ring in question and similar rings identified by Mogul is calculated over all ring torsion angles. If the average RMSD is greater than 60 degrees and the minimal RMSD between the ring in question and

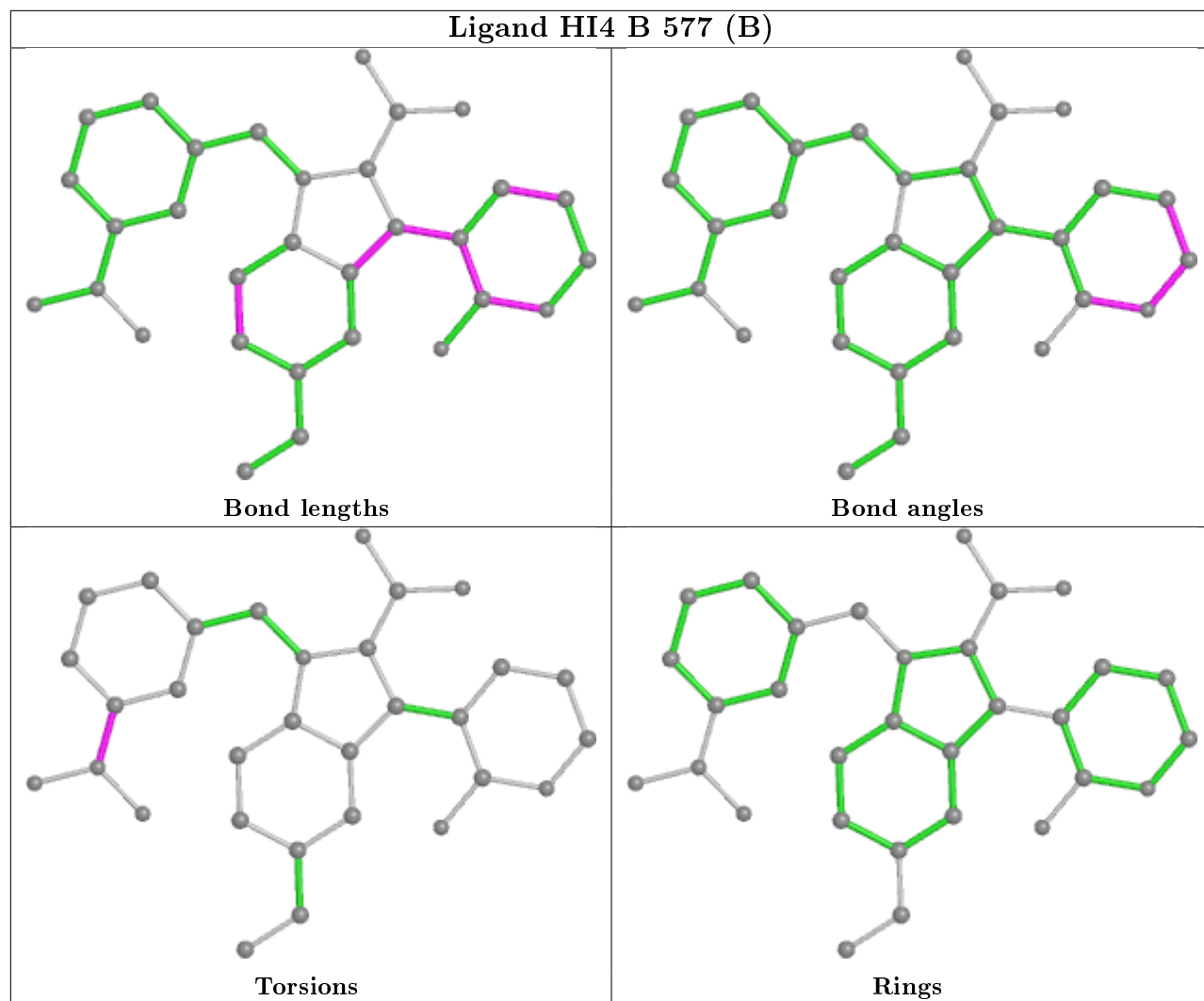
any Mogul-identified rings is also greater than 60 degrees, then that ring is considered an outlier. The outliers are highlighted in purple. The color gray indicates Mogul did not find sufficient equivalents in the CSD to analyse the geometry.

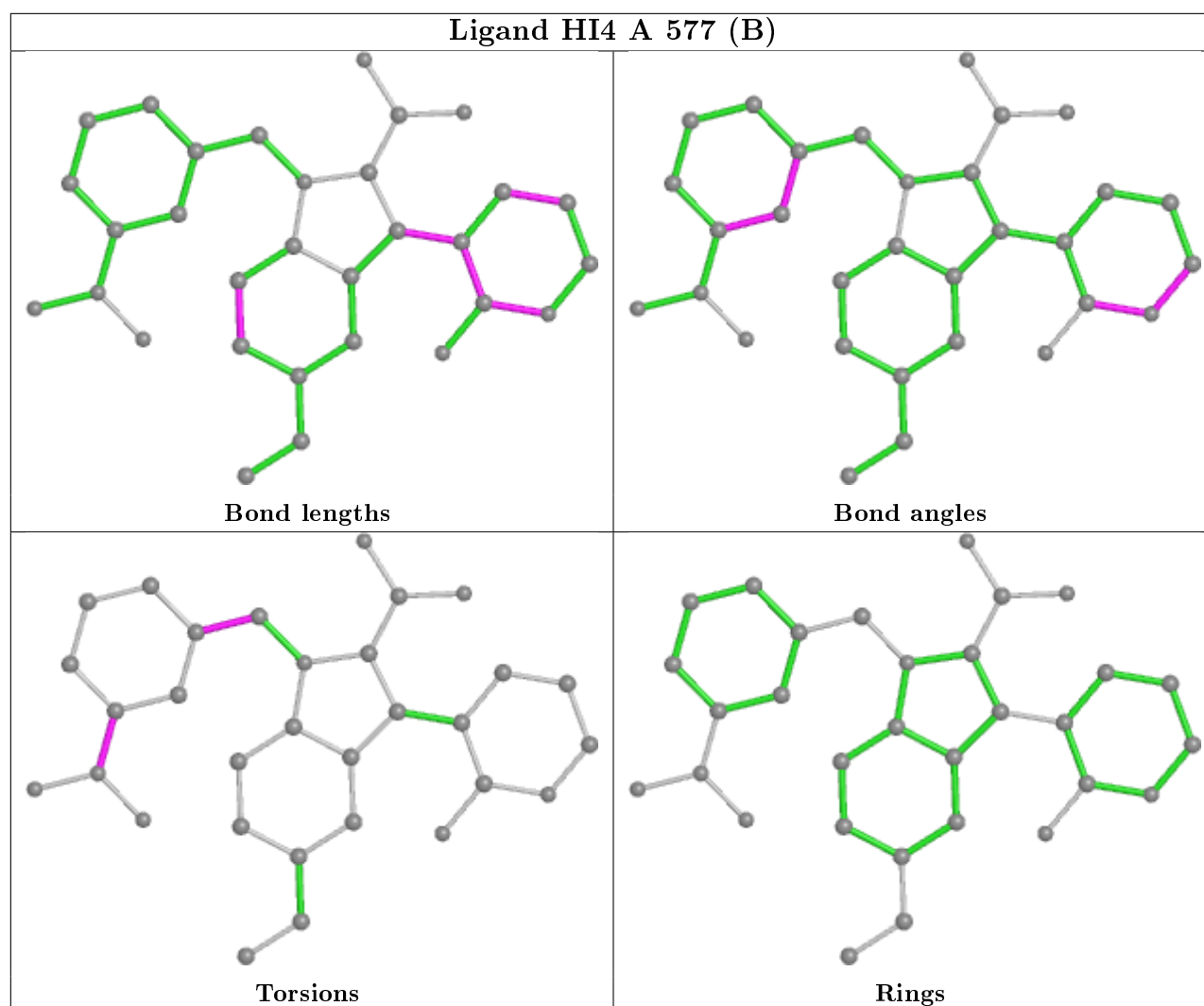


## Ligand HI4 B 577 (A)



## Ligand HI4 B 577 (B)





## 5.7 Other polymers [i](#)

There are no such residues in this entry.

## 5.8 Polymer linkage issues [i](#)

There are no chain breaks in this entry.

## 6 Fit of model and data ⓘ

### 6.1 Protein, DNA and RNA chains ⓘ

In the following table, the column labelled ‘#RSRZ> 2’ contains the number (and percentage) of RSRZ outliers, followed by percent RSRZ outliers for the chain as percentile scores relative to all X-ray entries and entries of similar resolution. The OWAB column contains the minimum, median, 95<sup>th</sup> percentile and maximum values of the occupancy-weighted average B-factor per residue. The column labelled ‘Q< 0.9’ lists the number of (and percentage) of residues with an average occupancy less than 0.9.

Mol	Chain	Analysed	<RSRZ>	#RSRZ>2	OWAB(Å <sup>2</sup> )	Q<0.9
1	A	563/576 (97%)	-0.21	11 (1%) 65 64	11, 18, 37, 86	0
1	B	558/576 (96%)	0.01	35 (6%) 20 18	12, 21, 49, 85	0
All	All	1121/1152 (97%)	-0.10	46 (4%) 37 34	11, 19, 43, 86	0

All (46) RSRZ outliers are listed below:

Mol	Chain	Res	Type	RSRZ
1	B	26	LEU	13.9
1	B	23	ILE	10.4
1	B	563	SER	10.4
1	B	25	PRO	7.5
1	B	548	SER	7.2
1	B	545	LEU	6.2
1	A	568	ARG	6.2
1	B	531	ARG	5.9
1	A	567	ALA	5.8
1	B	544	GLN	5.6
1	B	24	ASN	5.5
1	B	29	SER	4.6
1	B	532	THR	4.4
1	B	542	ALA	4.1
1	B	22	PRO	3.8
1	B	14	CYS	3.6
1	B	535	LYS	3.6
1	A	57	LEU	3.6
1	B	534	LEU	3.5
1	B	27	SER	3.4
1	B	543	SER	3.3
1	B	402	HIS	3.3
1	B	540	PRO	3.3
1	B	212	LYS	3.2

*Continued on next page...*



*Continued from previous page...*

Mol	Chain	Res	Type	RSRZ
1	B	213	CYS	3.2
1	A	544	GLN	3.1
1	B	16	ALA	3.1
1	B	502	HIS	3.0
1	B	547	LEU	3.0
1	B	530	VAL	2.8
1	B	330	GLN	2.8
1	A	566	ARG	2.8
1	A	15	ALA	2.8
1	A	14	CYS	2.7
1	B	34	HIS	2.7
1	B	533	LYS	2.6
1	A	564	LEU	2.6
1	B	536	LEU	2.4
1	B	541	ALA	2.4
1	B	498	ARG	2.4
1	A	543	SER	2.4
1	A	402	HIS	2.3
1	B	35	ASN	2.3
1	B	329	THR	2.3
1	B	309	GLN	2.2
1	A	565	SER	2.2

## 6.2 Non-standard residues in protein, DNA, RNA chains [i](#)

There are no non-standard protein/DNA/RNA residues in this entry.

## 6.3 Carbohydrates [i](#)

There are no carbohydrates in this entry.

## 6.4 Ligands [i](#)

In the following table, the Atoms column lists the number of modelled atoms in the group and the number defined in the chemical component dictionary. The B-factors column lists the minimum, median, 95<sup>th</sup> percentile and maximum values of B factors of atoms in the group. The column labelled 'Q< 0.9' lists the number of atoms with occupancy less than 0.9.

Mol	Type	Chain	Res	Atoms	RSCC	RSR	B-factors(Å <sup>2</sup> )	Q<0.9
3	PO4	B	578	5/5	0.76	0.26	47,48,52,52	0

*Continued on next page...*

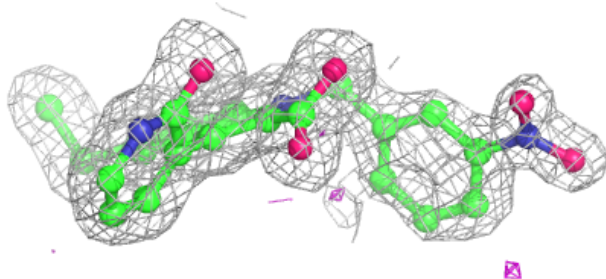
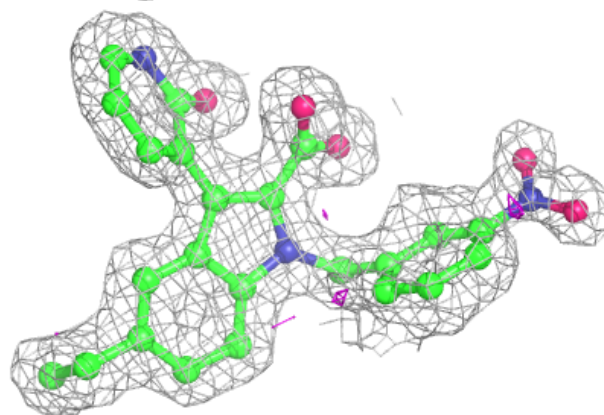
Continued from previous page...

Mol	Type	Chain	Res	Atoms	RSCC	RSR	B-factors( $\text{\AA}^2$ )	Q<0.9
3	PO4	A	579	5/5	0.93	0.18	65,69,71,72	0
2	HI4	B	577[B]	31/32	0.95	0.10	14,16,23,25	31
2	HI4	A	577[A]	31/32	0.95	0.13	11,14,29,36	31
2	HI4	B	577[A]	31/32	0.95	0.10	14,17,35,40	31
2	HI4	A	577[B]	31/32	0.95	0.13	12,15,23,29	31
3	PO4	A	578	5/5	0.98	0.07	19,20,22,24	0

The following is a graphical depiction of the model fit to experimental electron density of all instances of the Ligand of Interest. In addition, ligands with molecular weight > 250 and outliers as shown on the geometry validation Tables will also be included. Each fit is shown from different orientation to approximate a three-dimensional view.

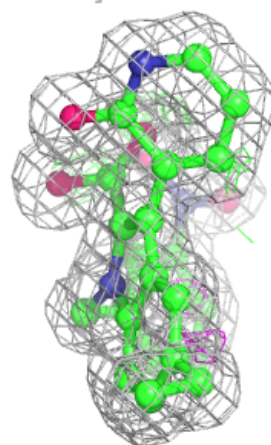
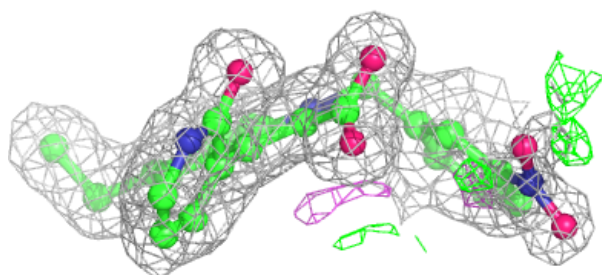
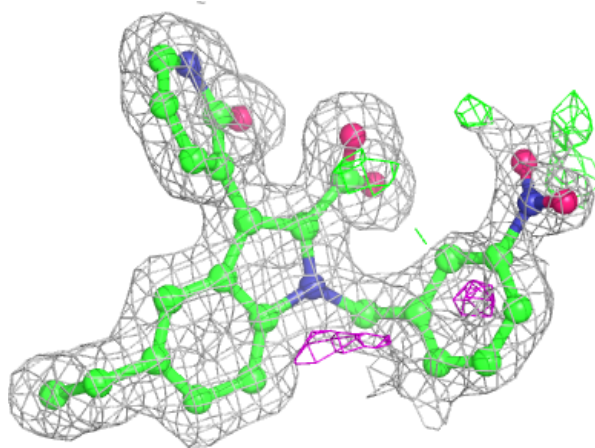
**Electron density around HI4 B 577 (B):**

2mF<sub>o</sub>-DF<sub>c</sub> (at 0.7 rmsd) in gray  
mF<sub>o</sub>-DF<sub>c</sub> (at 3 rmsd) in purple (negative)  
and green (positive)



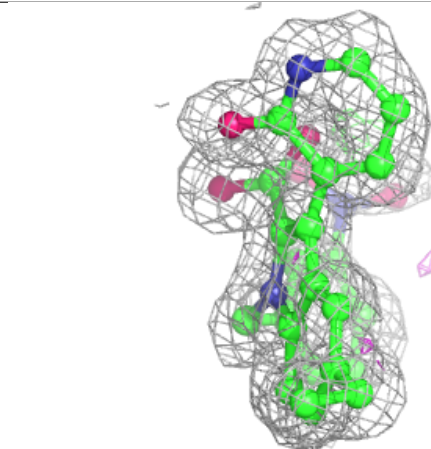
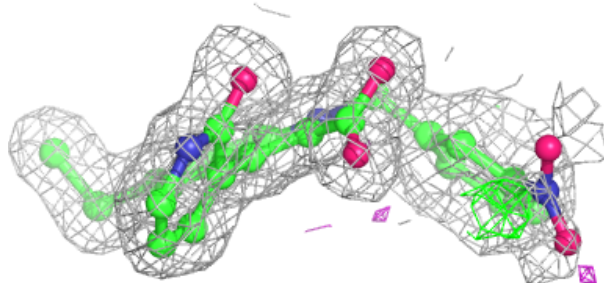
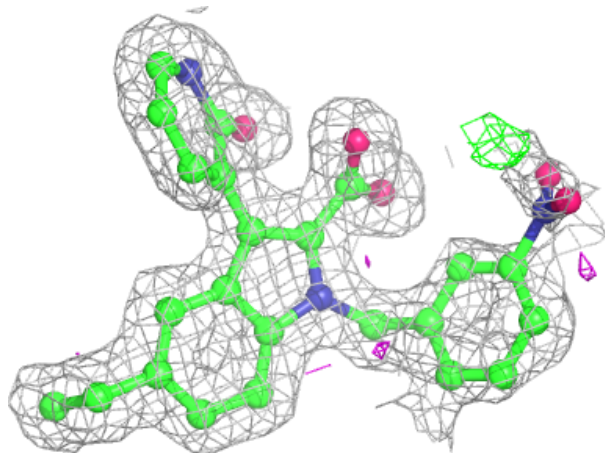
**Electron density around HI4 A 577 (A):**

$2mF_o-DF_c$  (at 0.7 rmsd) in gray  
 $mF_o-DF_c$  (at 3 rmsd) in purple (negative)  
and green (positive)



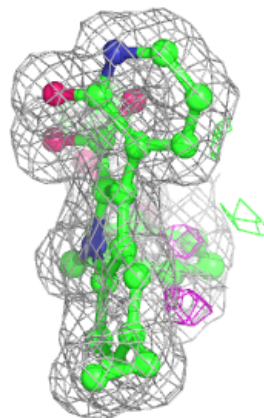
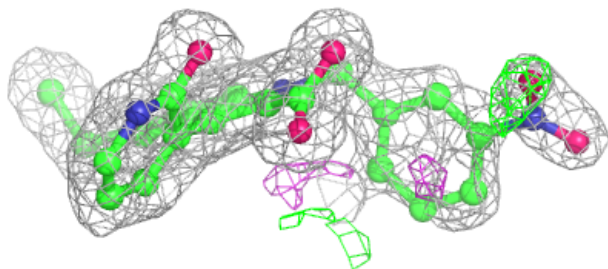
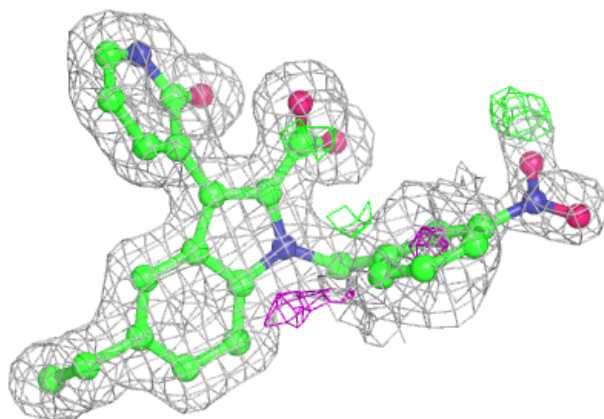
**Electron density around HI4 B 577 (A):**

$2mF_o-DF_c$  (at 0.7 rmsd) in gray  
 $mF_o-DF_c$  (at 3 rmsd) in purple (negative)  
and green (positive)



**Electron density around HI4 A 577 (B):**

$2mF_o-DF_c$  (at 0.7 rmsd) in gray  
 $mF_o-DF_c$  (at 3 rmsd) in purple (negative)  
and green (positive)



## 6.5 Other polymers [i](#)

There are no such residues in this entry.