



Full wwPDB X-ray Structure Validation Report ⓘ

May 24, 2020 – 05:05 pm BST

PDB ID : 6TZ7
Title : Crystal Structure of Aspergillus fumigatus Calcineurin A, Calcineurin B, FKBP12 and FK506 (Tacrolimus)
Authors : Fox III, D.; Horanyi, P.S.
Deposited on : 2019-08-10
Resolution : 2.50 Å(reported)

This is a Full wwPDB X-ray Structure Validation Report for a publicly released PDB entry.

We welcome your comments at validation@mail.wwpdb.org

A user guide is available at

<https://www.wwpdb.org/validation/2017/XrayValidationReportHelp>

with specific help available everywhere you see the ⓘ symbol.

The following versions of software and data (see [references ⓘ](#)) were used in the production of this report:

MolProbity : 4.02b-467
Mogul : 1.8.5 (274361), CSD as541be (2020)
Xtriage (Phenix) : 1.13
EDS : 2.11
buster-report : 1.1.7 (2018)
Percentile statistics : 20191225.v01 (using entries in the PDB archive December 25th 2019)
Refmac : 5.8.0158
CCP4 : 7.0.044 (Gargrove)
Ideal geometry (proteins) : Engh & Huber (2001)
Ideal geometry (DNA, RNA) : Parkinson et al. (1996)
Validation Pipeline (wwPDB-VP) : 2.11

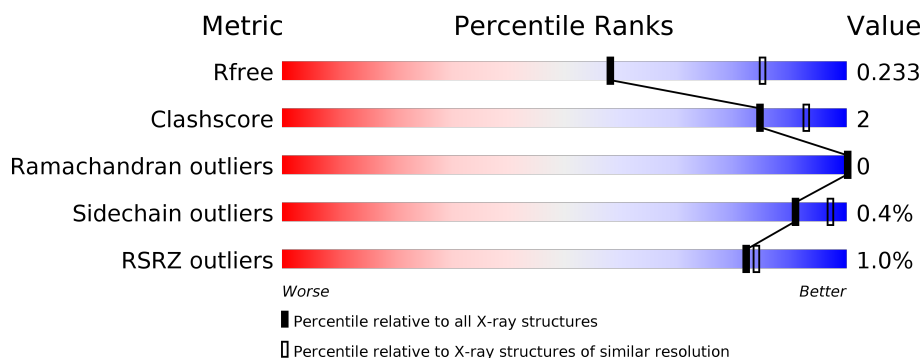
1 Overall quality at a glance

The following experimental techniques were used to determine the structure:

X-RAY DIFFRACTION

The reported resolution of this entry is 2.50 Å.

Percentile scores (ranging between 0-100) for global validation metrics of the entry are shown in the following graphic. The table shows the number of entries on which the scores are based.



Metric	Whole archive (#Entries)	Similar resolution (#Entries, resolution range(Å))
R_{free}	130704	4661 (2.50-2.50)
Clashscore	141614	5346 (2.50-2.50)
Ramachandran outliers	138981	5231 (2.50-2.50)
Sidechain outliers	138945	5233 (2.50-2.50)
RSRZ outliers	127900	4559 (2.50-2.50)

The table below summarises the geometric issues observed across the polymeric chains and their fit to the electron density. The red, orange, yellow and green segments on the lower bar indicate the fraction of residues that contain outliers for ≥ 3 , 2, 1 and 0 types of geometric quality criteria respectively. A grey segment represents the fraction of residues that are not modelled. The numeric value for each fraction is indicated below the corresponding segment, with a dot representing fractions $\leq 5\%$. The upper red bar (where present) indicates the fraction of residues that have poor fit to the electron density. The numeric value is given above the bar.

Mol	Chain	Length	Quality of chain
1	A	388	
2	B	174	
3	C	127	

2 Entry composition

There are 10 unique types of molecules in this entry. The entry contains 4821 atoms, of which 0 are hydrogens and 0 are deuteriums.

In the tables below, the ZeroOcc column contains the number of atoms modelled with zero occupancy, the AltConf column contains the number of residues with at least one atom in alternate conformation and the Trace column contains the number of residues modelled with at most 2 atoms.

- Molecule 1 is a protein called Serine/threonine-protein phosphatase 2B catalytic subunit.

Mol	Chain	Residues	Atoms					ZeroOcc	AltConf	Trace
1	A	358	Total	C	N	O	S	0	1	0
			2879	1868	477	514	20			

There are 19 discrepancies between the modelled and reference sequences:

Chain	Residue	Modelled	Actual	Comment	Reference
A	-17	MET	-	expression tag	UNP Q4WUR1
A	-16	GLY	-	expression tag	UNP Q4WUR1
A	-15	SER	-	expression tag	UNP Q4WUR1
A	-14	SER	-	expression tag	UNP Q4WUR1
A	-13	HIS	-	expression tag	UNP Q4WUR1
A	-12	HIS	-	expression tag	UNP Q4WUR1
A	-11	HIS	-	expression tag	UNP Q4WUR1
A	-10	HIS	-	expression tag	UNP Q4WUR1
A	-9	HIS	-	expression tag	UNP Q4WUR1
A	-8	HIS	-	expression tag	UNP Q4WUR1
A	-7	SER	-	expression tag	UNP Q4WUR1
A	-6	SER	-	expression tag	UNP Q4WUR1
A	-5	GLY	-	expression tag	UNP Q4WUR1
A	-4	LEU	-	expression tag	UNP Q4WUR1
A	-3	VAL	-	expression tag	UNP Q4WUR1
A	-2	PRO	-	expression tag	UNP Q4WUR1
A	-1	ARG	-	expression tag	UNP Q4WUR1
A	0	GLY	-	expression tag	UNP Q4WUR1
A	1	SER	-	expression tag	UNP Q4WUR1

- Molecule 2 is a protein called Calcineurin Ca²⁺-binding regulatory subunit CnaB.

Mol	Chain	Residues	Atoms					ZeroOcc	AltConf	Trace
2	B	122	Total	C	N	O	S	0	0	0
			875	552	141	176	6			

There is a discrepancy between the modelled and reference sequences:

Chain	Residue	Modelled	Actual	Comment	Reference
B	20	MET	-	expression tag	UNP Q4WDF2

- Molecule 3 is a protein called FK506-binding protein 1A.

Mol	Chain	Residues	Atoms					ZeroOcc	AltConf	Trace
3	C	117	Total	C	N	O	S	0	1	0
			889	565	151	172	1			

There are 16 discrepancies between the modelled and reference sequences:

Chain	Residue	Modelled	Actual	Comment	Reference
C	-14	MET	-	expression tag	UNP Q4WLV6
C	-13	GLY	-	expression tag	UNP Q4WLV6
C	-12	LEU	-	expression tag	UNP Q4WLV6
C	-11	ASN	-	expression tag	UNP Q4WLV6
C	-10	ASP	-	expression tag	UNP Q4WLV6
C	-9	ILE	-	expression tag	UNP Q4WLV6
C	-8	PHE	-	expression tag	UNP Q4WLV6
C	-7	GLU	-	expression tag	UNP Q4WLV6
C	-6	ALA	-	expression tag	UNP Q4WLV6
C	-5	GLN	-	expression tag	UNP Q4WLV6
C	-4	LYS	-	expression tag	UNP Q4WLV6
C	-3	ILE	-	expression tag	UNP Q4WLV6
C	-2	GLU	-	expression tag	UNP Q4WLV6
C	-1	TRP	-	expression tag	UNP Q4WLV6
C	0	HIS	-	expression tag	UNP Q4WLV6
C	1	GLU	-	expression tag	UNP Q4WLV6

- Molecule 4 is ZINC ION (three-letter code: ZN) (formula: Zn).

Mol	Chain	Residues	Atoms		ZeroOcc	AltConf
4	A	1	Total	Zn	0	0
			1	1		

- Molecule 5 is FE (III) ION (three-letter code: FE) (formula: Fe).

Mol	Chain	Residues	Atoms		ZeroOcc	AltConf
5	A	1	Total	Fe	0	0
			1	1		

- Molecule 6 is PHOSPHATE ION (three-letter code: PO4) (formula: O₄P).



Mol	Chain	Residues	Atoms			ZeroOcc	AltConf
6	A	1	Total	O	P	0	0
			5	4	1		

- Molecule 7 is 1,2-ETHANEDIOL (three-letter code: EDO) (formula: C₂H₆O₂).

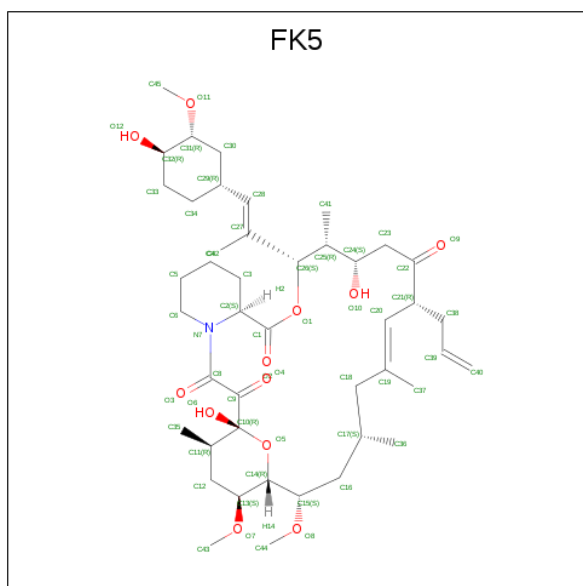


Mol	Chain	Residues	Atoms			ZeroOcc	AltConf
7	A	1	Total	C	O	0	0
			4	2	2		
7	A	1	Total	C	O	0	0
			4	2	2		

- Molecule 8 is CALCIUM ION (three-letter code: CA) (formula: Ca).

Mol	Chain	Residues	Atoms	ZeroOcc	AltConf
8	B	3	Total Ca 3 3	0	0

- Molecule 9 is 8-DEETHYL-8-[BUT-3-ENYL]-ASCOMYCIN (three-letter code: FK5) (formula: $C_{44}H_{69}NO_{12}$) (labeled as "Ligand of Interest" by author).



Mol	Chain	Residues	Atoms	ZeroOcc	AltConf
9	C	1	Total C N O 57 44 1 12	0	0

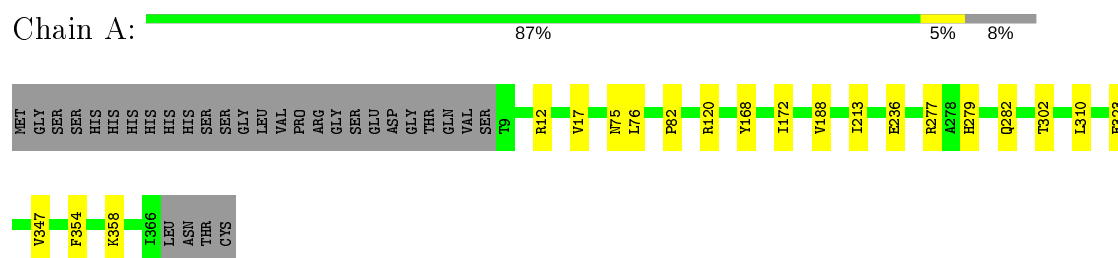
- Molecule 10 is water.

Mol	Chain	Residues	Atoms	ZeroOcc	AltConf
10	A	76	Total O 76 76	0	0
10	B	8	Total O 8 8	0	0
10	C	19	Total O 19 19	0	0

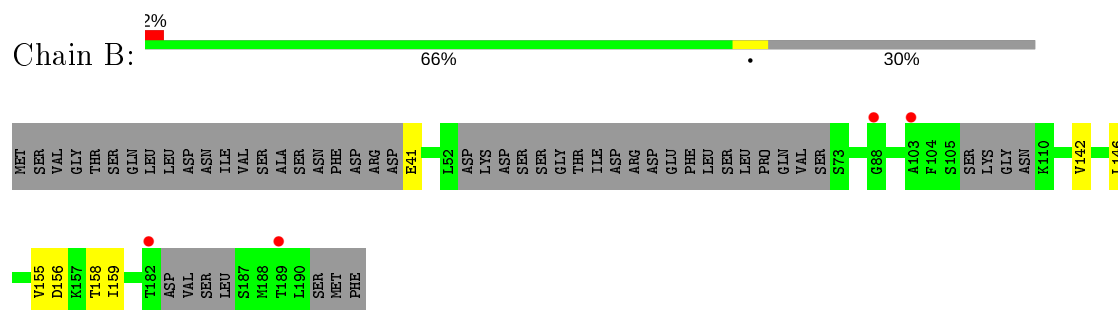
3 Residue-property plots [i](#)

These plots are drawn for all protein, RNA and DNA chains in the entry. The first graphic for a chain summarises the proportions of the various outlier classes displayed in the second graphic. The second graphic shows the sequence view annotated by issues in geometry and electron density. Residues are color-coded according to the number of geometric quality criteria for which they contain at least one outlier: green = 0, yellow = 1, orange = 2 and red = 3 or more. A red dot above a residue indicates a poor fit to the electron density ($RSRZ > 2$). Stretches of 2 or more consecutive residues without any outlier are shown as a green connector. Residues present in the sample, but not in the model, are shown in grey.

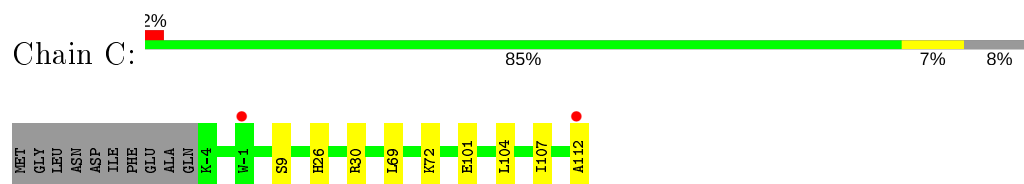
- Molecule 1: Serine/threonine-protein phosphatase 2B catalytic subunit



- Molecule 2: Calcineurin Ca²⁺-binding regulatory subunit CnaB



- Molecule 3: FK506-binding protein 1A



4 Data and refinement statistics

Property	Value	Source
Space group	P 1 21 1	Depositor
Cell constants a, b, c, α , β , γ	59.24Å 94.46Å 69.83Å 90.00° 109.28° 90.00°	Depositor
Resolution (Å)	48.12 – 2.50 48.12 – 2.50	Depositor EDS
% Data completeness (in resolution range)	99.9 (48.12-2.50) 99.9 (48.12-2.50)	Depositor EDS
R_{merge}	0.10	Depositor
R_{sym}	(Not available)	Depositor
$\langle I/\sigma(I) \rangle$ ¹	2.42 (at 2.51Å)	Xtriage
Refinement program	PHENIX dev_1803	Depositor
R, R_{free}	0.200 , 0.232 0.201 , 0.233	Depositor DCC
R_{free} test set	1258 reflections (4.99%)	wwPDB-VP
Wilson B-factor (Å ²)	38.3	Xtriage
Anisotropy	0.296	Xtriage
Bulk solvent k_{sol} (e/Å ³), B_{sol} (Å ²)	0.31 , 43.1	EDS
L-test for twinning ²	$\langle L \rangle = 0.49$, $\langle L^2 \rangle = 0.32$	Xtriage
Estimated twinning fraction	No twinning to report.	Xtriage
F_o, F_c correlation	0.94	EDS
Total number of atoms	4821	wwPDB-VP
Average B, all atoms (Å ²)	46.0	wwPDB-VP

Xtriage's analysis on translational NCS is as follows: *The largest off-origin peak in the Patterson function is 5.39% of the height of the origin peak. No significant pseudotranslation is detected.*

¹Intensities estimated from amplitudes.

²Theoretical values of $\langle |L| \rangle$, $\langle L^2 \rangle$ for acentric reflections are 0.5, 0.333 respectively for untwinned datasets, and 0.375, 0.2 for perfectly twinned datasets.

5 Model quality [i](#)

5.1 Standard geometry [i](#)

Bond lengths and bond angles in the following residue types are not validated in this section: ZN, PO4, EDO, FE, CA, FK5

The Z score for a bond length (or angle) is the number of standard deviations the observed value is removed from the expected value. A bond length (or angle) with $|Z| > 5$ is considered an outlier worth inspection. RMSZ is the root-mean-square of all Z scores of the bond lengths (or angles).

Mol	Chain	Bond lengths		Bond angles	
		RMSZ	$\# Z > 5$	RMSZ	$\# Z > 5$
1	A	0.21	0/2972	0.36	0/4048
2	B	0.21	0/882	0.33	0/1188
3	C	0.21	0/914	0.38	0/1242
All	All	0.21	0/4768	0.36	0/6478

There are no bond length outliers.

There are no bond angle outliers.

There are no chirality outliers.

There are no planarity outliers.

5.2 Too-close contacts [i](#)

In the following table, the Non-H and H(model) columns list the number of non-hydrogen atoms and hydrogen atoms in the chain respectively. The H(added) column lists the number of hydrogen atoms added and optimized by MolProbity. The Clashes column lists the number of clashes within the asymmetric unit, whereas Symm-Clashes lists symmetry related clashes.

Mol	Chain	Non-H	H(model)	H(added)	Clashes	Symm-Clashes
1	A	2879	0	2721	12	0
2	B	875	0	755	4	0
3	C	889	0	850	4	0
4	A	1	0	0	0	0
5	A	1	0	0	0	0
6	A	5	0	0	0	0
7	A	8	0	12	0	0
8	B	3	0	0	0	0
9	C	57	0	69	3	0
10	A	76	0	0	0	0

Continued on next page...

Continued from previous page...

Mol	Chain	Non-H	H(model)	H(added)	Clashes	Symm-Clashes
10	B	8	0	0	0	0
10	C	19	0	0	0	0
All	All	4821	0	4407	21	0

The all-atom clashscore is defined as the number of clashes found per 1000 atoms (including hydrogen atoms). The all-atom clashscore for this structure is 2.

All (21) close contacts within the same asymmetric unit are listed below, sorted by their clash magnitude.

Atom-1	Atom-2	Interatomic distance (Å)	Clash overlap (Å)
3:C:69:LEU:HG	3:C:112:ALA:HB2	1.82	0.62
3:C:9:SER:HB3	3:C:72:LYS:HB2	1.84	0.59
1:A:82:PRO:HB3	1:A:323:GLU:HG3	1.85	0.59
1:A:347:VAL:HG22	2:B:158:THR:HG21	1.84	0.58
1:A:75:ASN:ND2	1:A:213:ILE:O	2.37	0.57
1:A:236:GLU:N	1:A:236:GLU:OE1	2.42	0.52
3:C:104:LEU:HD21	3:C:107:ILE:HD11	1.92	0.51
1:A:120:ARG:HB3	1:A:310:LEU:HD21	1.91	0.51
1:A:282:GLN:HE21	1:A:302:THR:HG21	1.76	0.51
1:A:168:TYR:HB3	1:A:172:ILE:HG13	1.94	0.49
1:A:12:ARG:NH2	1:A:17:VAL:O	2.34	0.47
2:B:142:VAL:HG11	2:B:146:LEU:HB2	1.97	0.46
1:A:277:ARG:NH2	1:A:279:HIS:HB3	2.30	0.46
1:A:76:LEU:HD11	1:A:188:VAL:HG23	1.97	0.46
9:C:201:FK5:H371	9:C:201:FK5:H21	1.83	0.43
1:A:12:ARG:NH1	2:B:156:ASP:OD2	2.51	0.43
3:C:30:ARG:NH1	3:C:101:GLU:OE2	2.49	0.42
9:C:201:FK5:H29	9:C:201:FK5:H421	1.78	0.42
1:A:354:PHE:CZ	1:A:358:LYS:HE2	2.55	0.42
9:C:201:FK5:H413	9:C:201:FK5:H232	1.90	0.41
2:B:155:VAL:O	2:B:159:ILE:HG12	2.21	0.40

There are no symmetry-related clashes.

5.3 Torsion angles ⓘ

5.3.1 Protein backbone ⓘ

In the following table, the Percentiles column shows the percent Ramachandran outliers of the chain as a percentile score with respect to all X-ray entries followed by that with respect to entries of similar resolution.

The Analysed column shows the number of residues for which the backbone conformation was analysed, and the total number of residues.

Mol	Chain	Analysed	Favoured	Allowed	Outliers	Percentiles	
1	A	357/388 (92%)	338 (95%)	19 (5%)	0	100	100
2	B	114/174 (66%)	112 (98%)	2 (2%)	0	100	100
3	C	116/127 (91%)	114 (98%)	2 (2%)	0	100	100
All	All	587/689 (85%)	564 (96%)	23 (4%)	0	100	100

There are no Ramachandran outliers to report.

5.3.2 Protein sidechains ⓘ

In the following table, the Percentiles column shows the percent sidechain outliers of the chain as a percentile score with respect to all X-ray entries followed by that with respect to entries of similar resolution.

The Analysed column shows the number of residues for which the sidechain conformation was analysed, and the total number of residues.

Mol	Chain	Analysed	Rotameric	Outliers	Percentiles	
1	A	300/345 (87%)	300 (100%)	0	100	100
2	B	79/157 (50%)	78 (99%)	1 (1%)	69	87
3	C	93/106 (88%)	92 (99%)	1 (1%)	73	89
All	All	472/608 (78%)	470 (100%)	2 (0%)	91	97

All (2) residues with a non-rotameric sidechain are listed below:

Mol	Chain	Res	Type
2	B	41	GLU
3	C	26	HIS

Some sidechains can be flipped to improve hydrogen bonding and reduce clashes. All (2) such sidechains are listed below:

Mol	Chain	Res	Type
1	A	64	HIS
1	A	282	GLN

5.3.3 RNA ⓘ

There are no RNA molecules in this entry.

5.4 Non-standard residues in protein, DNA, RNA chains ⓘ

There are no non-standard protein/DNA/RNA residues in this entry.

5.5 Carbohydrates ⓘ

There are no carbohydrates in this entry.

5.6 Ligand geometry ⓘ

Of 9 ligands modelled in this entry, 5 are monoatomic - leaving 4 for Mogul analysis.

In the following table, the Counts columns list the number of bonds (or angles) for which Mogul statistics could be retrieved, the number of bonds (or angles) that are observed in the model and the number of bonds (or angles) that are defined in the Chemical Component Dictionary. The Link column lists molecule types, if any, to which the group is linked. The Z score for a bond length (or angle) is the number of standard deviations the observed value is removed from the expected value. A bond length (or angle) with $|Z| > 2$ is considered an outlier worth inspection. RMSZ is the root-mean-square of all Z scores of the bond lengths (or angles).

Mol	Type	Chain	Res	Link	Bond lengths			Bond angles		
					Counts	RMSZ	$\# Z > 2$	Counts	RMSZ	$\# Z > 2$
7	EDO	A	404	-	3,3,3	0.46	0	2,2,2	0.30	0
7	EDO	A	405	-	3,3,3	0.45	0	2,2,2	0.36	0
9	FK5	C	201	-	54,60,60	3.55	10 (18%)	64,86,86	1.61	10 (15%)
6	PO4	A	403	5,4	4,4,4	0.92	0	6,6,6	0.41	0

In the following table, the Chirals column lists the number of chiral outliers, the number of chiral centers analysed, the number of these observed in the model and the number defined in the Chemical Component Dictionary. Similar counts are reported in the Torsion and Rings columns. '-' means no outliers of that kind were identified.

Mol	Type	Chain	Res	Link	Chirals	Torsions	Rings
7	EDO	A	404	-	-	0/1/1/1	-
7	EDO	A	405	-	-	0/1/1/1	-
9	FK5	C	201	-	-	5/68/114/114	0/3/4/4

All (10) bond length outliers are listed below:

Mol	Chain	Res	Type	Atoms	Z	Observed(Å)	Ideal(Å)
9	C	201	FK5	O9-C22	11.44	1.41	1.21
9	C	201	FK5	O4-C9	10.80	1.41	1.22
9	C	201	FK5	C8-C9	-10.64	1.40	1.53
9	C	201	FK5	C20-C19	9.22	1.47	1.33
9	C	201	FK5	O3-C8	8.66	1.41	1.23
9	C	201	FK5	O2-C1	8.01	1.41	1.21
9	C	201	FK5	C28-C27	6.71	1.47	1.33
9	C	201	FK5	O1-C1	-3.67	1.25	1.34
9	C	201	FK5	O6-C10	3.62	1.45	1.39
9	C	201	FK5	C40-C39	2.80	1.47	1.28

All (10) bond angle outliers are listed below:

Mol	Chain	Res	Type	Atoms	Z	Observed(°)	Ideal(°)
9	C	201	FK5	C21-C20-C19	-6.68	120.80	127.64
9	C	201	FK5	O1-C1-C2	4.91	121.60	110.78
9	C	201	FK5	O1-C26-C25	2.98	109.32	105.91
9	C	201	FK5	O1-C1-O2	-2.66	118.97	123.94
9	C	201	FK5	C42-C27-C26	2.61	120.19	115.68
9	C	201	FK5	O2-C1-C2	-2.25	119.43	124.49
9	C	201	FK5	C6-N7-C2	2.17	120.37	115.80
9	C	201	FK5	C24-C23-C22	-2.17	109.26	114.19
9	C	201	FK5	O3-C8-C9	2.13	119.78	116.28
9	C	201	FK5	C12-C11-C10	2.07	112.52	110.47

There are no chirality outliers.

All (5) torsion outliers are listed below:

Mol	Chain	Res	Type	Atoms
9	C	201	FK5	C15-C16-C17-C36
9	C	201	FK5	C36-C17-C18-C19
9	C	201	FK5	C19-C20-C21-C22
9	C	201	FK5	C13-C14-C15-O8
9	C	201	FK5	C13-C14-C15-C16

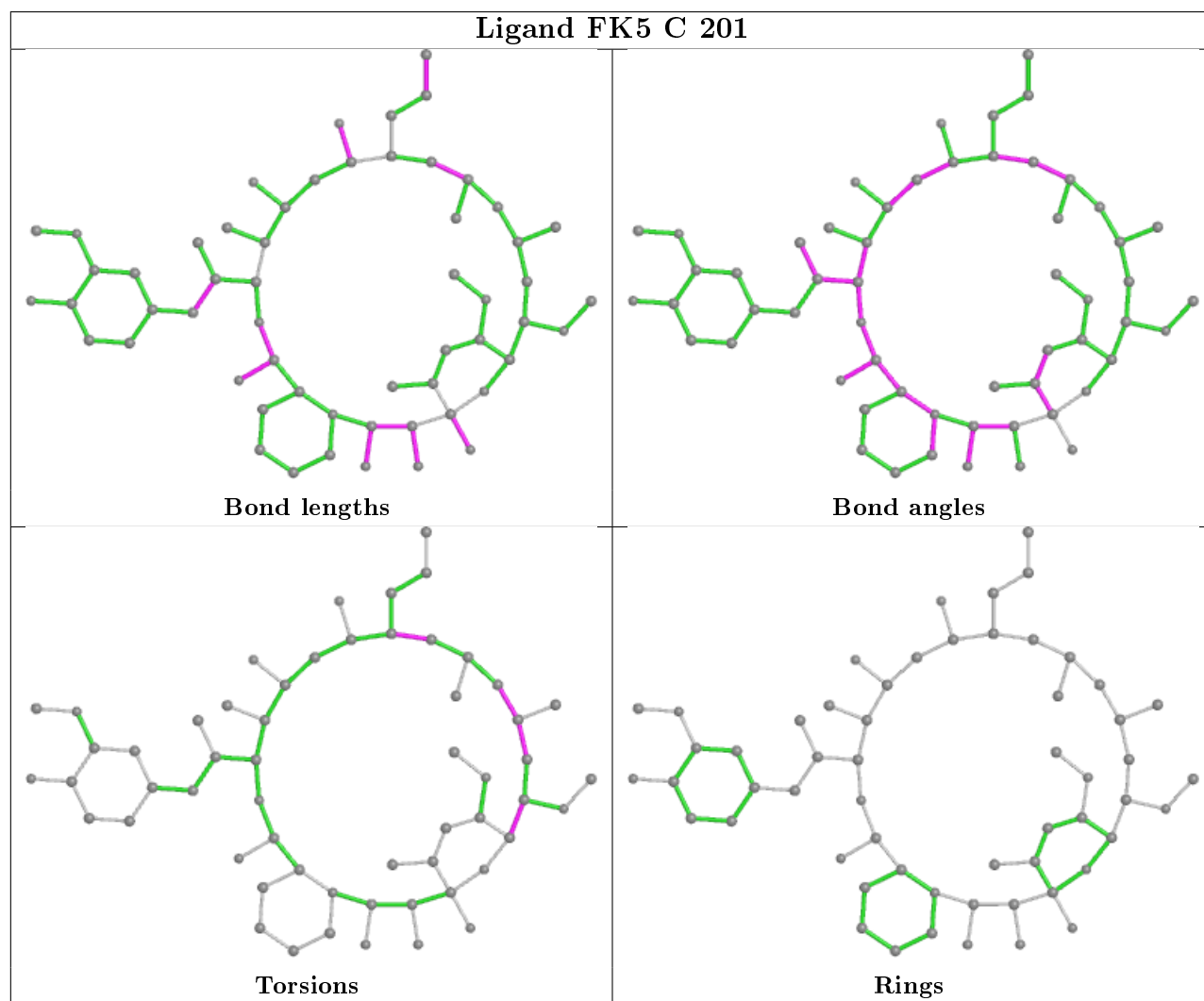
There are no ring outliers.

1 monomer is involved in 3 short contacts:

Mol	Chain	Res	Type	Clashes	Symm-Clashes
9	C	201	FK5	3	0

The following is a two-dimensional graphical depiction of Mogul quality analysis of bond lengths,

bond angles, torsion angles, and ring geometry for all instances of the Ligand of Interest. In addition, ligands with molecular weight > 250 and outliers as shown on the validation Tables will also be included. For torsion angles, if less than 5% of the Mogul distribution of torsion angles is within 10 degrees of the torsion angle in question, then that torsion angle is considered an outlier. Any bond that is central to one or more torsion angles identified as an outlier by Mogul will be highlighted in the graph. For rings, the root-mean-square deviation (RMSD) between the ring in question and similar rings identified by Mogul is calculated over all ring torsion angles. If the average RMSD is greater than 60 degrees and the minimal RMSD between the ring in question and any Mogul-identified rings is also greater than 60 degrees, then that ring is considered an outlier. The outliers are highlighted in purple. The color gray indicates Mogul did not find sufficient equivalents in the CSD to analyse the geometry.



5.7 Other polymers ⓘ

There are no such residues in this entry.

5.8 Polymer linkage issues

There are no chain breaks in this entry.

6 Fit of model and data ⓘ

6.1 Protein, DNA and RNA chains ⓘ

In the following table, the column labelled ‘#RSRZ> 2’ contains the number (and percentage) of RSRZ outliers, followed by percent RSRZ outliers for the chain as percentile scores relative to all X-ray entries and entries of similar resolution. The OWAB column contains the minimum, median, 95th percentile and maximum values of the occupancy-weighted average B-factor per residue. The column labelled ‘Q< 0.9’ lists the number of (and percentage) of residues with an average occupancy less than 0.9.

Mol	Chain	Analysed	<RSRZ>	#RSRZ>2	OWAB(Å ²)	Q<0.9
1	A	358/388 (92%)	-0.12	0 100 100	27, 41, 69, 86	0
2	B	122/174 (70%)	0.07	4 (3%) 46 50	27, 61, 108, 127	0
3	C	117/127 (92%)	-0.22	2 (1%) 70 72	29, 41, 60, 81	0
All	All	597/689 (86%)	-0.10	6 (1%) 82 84	27, 43, 83, 127	0

All (6) RSRZ outliers are listed below:

Mol	Chain	Res	Type	RSRZ
3	C	112	ALA	3.3
2	B	88	GLY	3.2
2	B	189	THR	2.8
3	C	-1	TRP	2.5
2	B	103	ALA	2.4
2	B	182	THR	2.1

6.2 Non-standard residues in protein, DNA, RNA chains ⓘ

There are no non-standard protein/DNA/RNA residues in this entry.

6.3 Carbohydrates ⓘ

There are no carbohydrates in this entry.

6.4 Ligands ⓘ

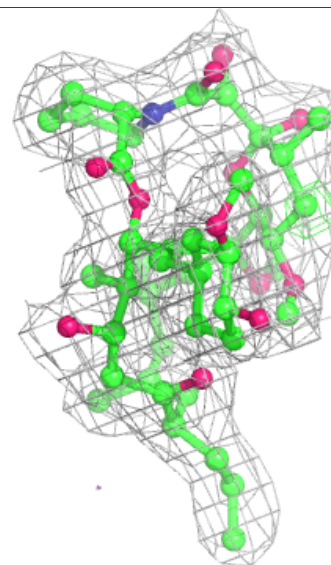
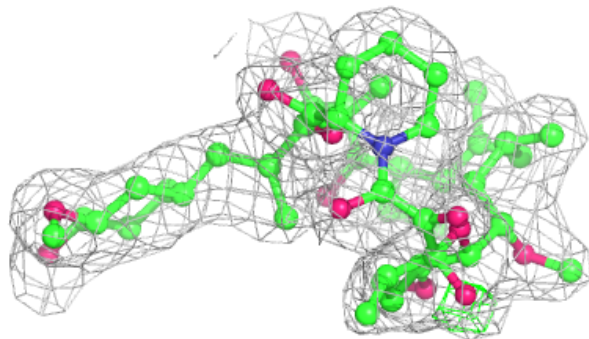
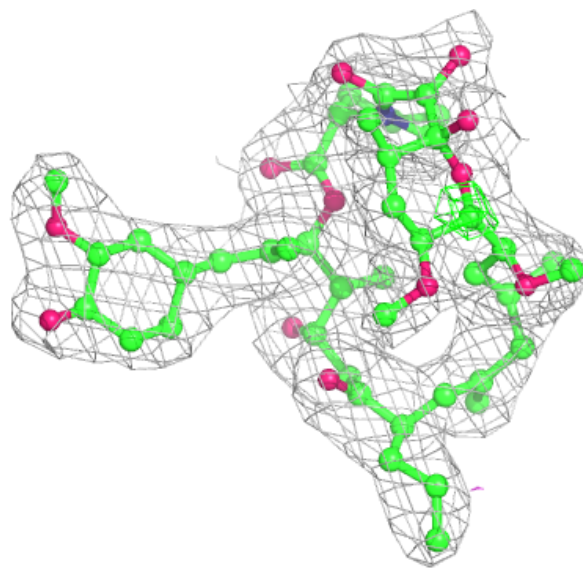
In the following table, the Atoms column lists the number of modelled atoms in the group and the number defined in the chemical component dictionary. The B-factors column lists the minimum, median, 95th percentile and maximum values of B factors of atoms in the group. The column labelled ‘Q< 0.9’ lists the number of atoms with occupancy less than 0.9.

Mol	Type	Chain	Res	Atoms	RSCC	RSR	B-factors(\AA^2)	Q<0.9
7	EDO	A	404	4/4	0.91	0.16	51,53,55,56	0
8	CA	B	203	1/1	0.92	0.06	102,102,102,102	0
7	EDO	A	405	4/4	0.94	0.26	64,65,65,65	0
8	CA	B	202	1/1	0.94	0.10	49,49,49,49	0
9	FK5	C	201	57/57	0.95	0.14	21,36,42,44	0
5	FE	A	402	1/1	0.96	0.13	42,42,42,42	1
8	CA	B	201	1/1	0.97	0.11	49,49,49,49	0
6	PO4	A	403	5/5	0.98	0.12	45,50,54,56	0
4	ZN	A	401	1/1	0.99	0.12	48,48,48,48	0

The following is a graphical depiction of the model fit to experimental electron density of all instances of the Ligand of Interest. In addition, ligands with molecular weight > 250 and outliers as shown on the geometry validation Tables will also be included. Each fit is shown from different orientation to approximate a three-dimensional view.

Electron density around FK5 C 201:

$2mF_o-DF_c$ (at 0.7 rmsd) in gray
 mF_o-DF_c (at 3 rmsd) in purple (negative)
and green (positive)



6.5 Other polymers [i](#)

There are no such residues in this entry.