



wwPDB X-ray Structure Validation Summary Report ⓘ

Aug 21, 2020 – 10:56 AM BST

PDB ID : 6U0P
Title : Crystal structure of PieE, the flavin-dependent monooxygenase involved in the biosynthesis of piericidin A1
Authors : Shi, R.; Manenda, M.; Picard, M.-E.
Deposited on : 2019-08-14
Resolution : 2.02 Å(reported)

This is a wwPDB X-ray Structure Validation Summary Report for a publicly released PDB entry.

We welcome your comments at validation@mail.wwpdb.org

A user guide is available at

<https://www.wwpdb.org/validation/2017/XrayValidationReportHelp>

with specific help available everywhere you see the ⓘ symbol.

The following versions of software and data (see [references ⓘ](#)) were used in the production of this report:

MolProbity : 4.02b-467
Mogul : 1.8.5 (274361), CSD as541be (2020)
Xtriage (Phenix) : 1.13
EDS : 2.13.1
buster-report : 1.1.7 (2018)
Percentile statistics : 20191225.v01 (using entries in the PDB archive December 25th 2019)
Refmac : 5.8.0158
CCP4 : 7.0.044 (Gargrove)
Ideal geometry (proteins) : Engh & Huber (2001)
Ideal geometry (DNA, RNA) : Parkinson et al. (1996)
Validation Pipeline (wwPDB-VP) : 2.13.1

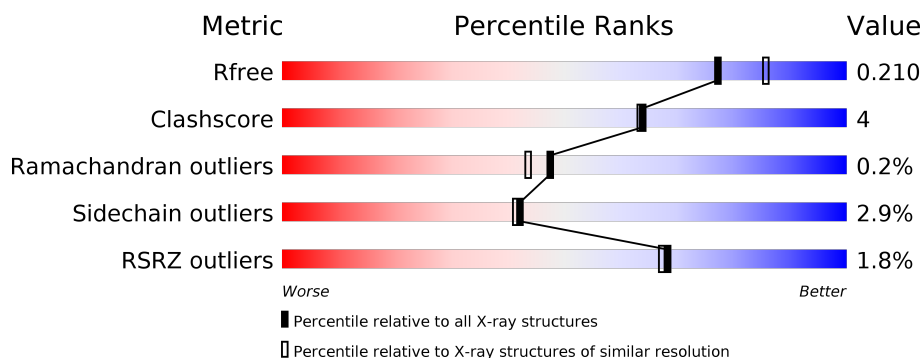
1 Overall quality at a glance ⓘ

The following experimental techniques were used to determine the structure:

X-RAY DIFFRACTION

The reported resolution of this entry is 2.02 Å.

Percentile scores (ranging between 0-100) for global validation metrics of the entry are shown in the following graphic. The table shows the number of entries on which the scores are based.



Metric	Whole archive (#Entries)	Similar resolution (#Entries, resolution range(Å))
R_{free}	130704	10434 (2.04-2.00)
Clashscore	141614	11643 (2.04-2.00)
Ramachandran outliers	138981	11493 (2.04-2.00)
Sidechain outliers	138945	11492 (2.04-2.00)
RSRZ outliers	127900	10220 (2.04-2.00)

The table below summarises the geometric issues observed across the polymeric chains and their fit to the electron density. The red, orange, yellow and green segments on the lower bar indicate the fraction of residues that contain outliers for ≥ 3 , 2, 1 and 0 types of geometric quality criteria respectively. A grey segment represents the fraction of residues that are not modelled. The numeric value for each fraction is indicated below the corresponding segment, with a dot representing fractions $\leq 5\%$. The upper red bar (where present) indicates the fraction of residues that have poor fit to the electron density. The numeric value is given above the bar.

Mol	Chain	Length	Quality of chain
1	A	601	<div> <div>3%</div> <div> <div></div> <div>89%</div> <div>8%</div> <div></div> </div> <div></div> </div>
1	B	601	<div> <div>2%</div> <div> <div></div> <div>84%</div> <div>12%</div> <div></div> </div> <div></div> </div>
1	C	601	<div> <div>2%</div> <div> <div></div> <div>88%</div> <div>9%</div> <div></div> </div> <div></div> </div>
1	D	601	<div> <div>2%</div> <div> <div></div> <div>86%</div> <div>9%</div> <div></div> </div> <div></div> </div>
1	E	601	<div> <div>0%</div> <div> <div></div> <div>86%</div> <div>9%</div> <div></div> </div> <div></div> </div>
1	F	601	<div> <div>2%</div> <div> <div></div> <div>88%</div> <div>7%</div> <div></div> </div> <div></div> </div>

2 Entry composition

There are 7 unique types of molecules in this entry. The entry contains 29588 atoms, of which 0 are hydrogens and 0 are deuteriums.

In the tables below, the ZeroOcc column contains the number of atoms modelled with zero occupancy, the AltConf column contains the number of residues with at least one atom in alternate conformation and the Trace column contains the number of residues modelled with at most 2 atoms.

- Molecule 1 is a protein called 2,4-dichlorophenol 6-monooxygenase.

Mol	Chain	Residues	Atoms					ZeroOcc	AltConf	Trace
1	A	581	Total	C	N	O	S	0	0	0
			4434	2770	830	824	10			
1	B	579	Total	C	N	O	S	0	0	0
			4423	2764	828	821	10			
1	C	585	Total	C	N	O	S	0	0	0
			4470	2791	840	829	10			
1	D	578	Total	C	N	O	S	0	0	0
			4416	2759	827	820	10			
1	E	579	Total	C	N	O	S	0	1	0
			4431	2768	831	822	10			
1	F	579	Total	C	N	O	S	0	0	0
			4426	2765	828	823	10			

There are 18 discrepancies between the modelled and reference sequences:

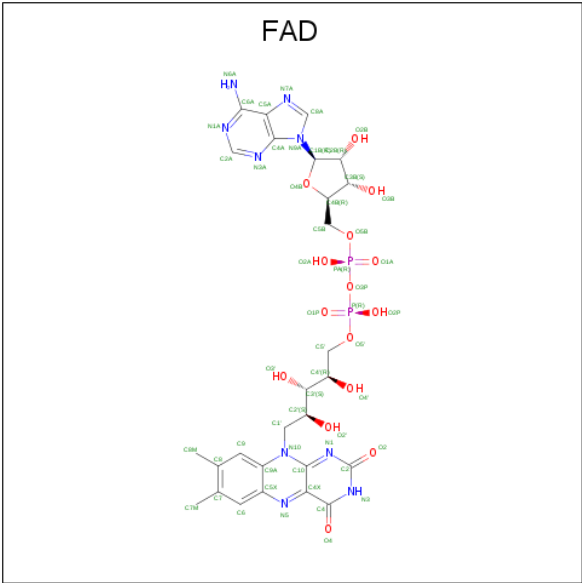
Chain	Residue	Modelled	Actual	Comment	Reference
A	-2	GLY	-	expression tag	UNP W0C4C9
A	-1	SER	-	expression tag	UNP W0C4C9
A	0	HIS	-	expression tag	UNP W0C4C9
B	-2	GLY	-	expression tag	UNP W0C4C9
B	-1	SER	-	expression tag	UNP W0C4C9
B	0	HIS	-	expression tag	UNP W0C4C9
C	-2	GLY	-	expression tag	UNP W0C4C9
C	-1	SER	-	expression tag	UNP W0C4C9
C	0	HIS	-	expression tag	UNP W0C4C9
D	-2	GLY	-	expression tag	UNP W0C4C9
D	-1	SER	-	expression tag	UNP W0C4C9
D	0	HIS	-	expression tag	UNP W0C4C9
E	-2	GLY	-	expression tag	UNP W0C4C9
E	-1	SER	-	expression tag	UNP W0C4C9
E	0	HIS	-	expression tag	UNP W0C4C9
F	-2	GLY	-	expression tag	UNP W0C4C9
F	-1	SER	-	expression tag	UNP W0C4C9

Continued on next page...

Continued from previous page...

Chain	Residue	Modelled	Actual	Comment	Reference
F	0	HIS	-	expression tag	UNP W0C4C9

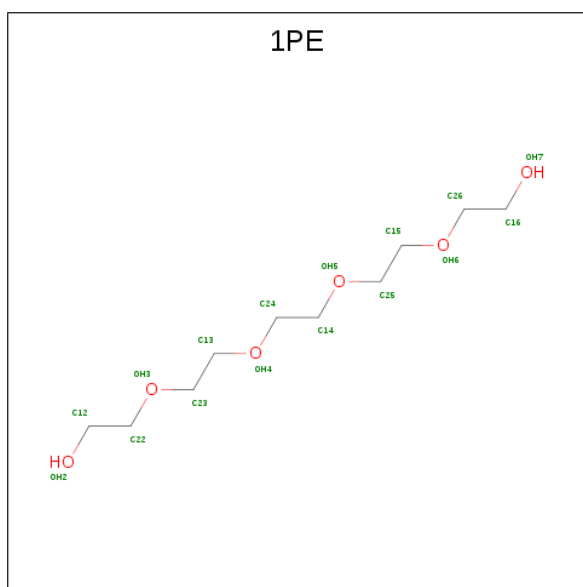
- Molecule 2 is FLAVIN-ADENINE DINUCLEOTIDE (three-letter code: FAD) (formula: C₂₇H₃₃N₉O₁₅P₂) (labeled as "Ligand of Interest" by author).





Mol	Chain	Residues	Atoms			ZeroOcc	AltConf
3	A	1	Total	C	O	0	0
			10	6	4		
3	A	1	Total	C	O	0	0
			10	6	4		
3	B	1	Total	C	O	0	0
			10	6	4		
3	B	1	Total	C	O	0	0
			10	6	4		
3	C	1	Total	C	O	0	0
			10	6	4		
3	C	1	Total	C	O	0	0
			10	6	4		
3	D	1	Total	C	O	0	0
			10	6	4		
3	D	1	Total	C	O	0	0
			10	6	4		
3	E	1	Total	C	O	0	0
			10	6	4		
3	E	1	Total	C	O	0	0
			10	6	4		
3	F	1	Total	C	O	0	0
			10	6	4		
3	F	1	Total	C	O	0	0
			10	6	4		

- Molecule 4 is PENTAETHYLENE GLYCOL (three-letter code: 1PE) (formula: C₁₀H₂₂O₆).



Mol	Chain	Residues	Atoms			ZeroOcc	AltConf
4	A	1	Total	C	O	0	0
			16	10	6		
4	B	1	Total	C	O	0	0
			16	10	6		
4	C	1	Total	C	O	0	0
			16	10	6		
4	D	1	Total	C	O	0	0
			16	10	6		
4	E	1	Total	C	O	0	0
			16	10	6		
4	F	1	Total	C	O	0	0
			16	10	6		

- Molecule 5 is CHLORIDE ION (three-letter code: CL) (formula: Cl).

Mol	Chain	Residues	Atoms		ZeroOcc	AltConf
5	D	2	Total	Cl	0	0
			2	2		
5	E	2	Total	Cl	0	0
			2	2		
5	B	1	Total	Cl	0	0
			1	1		
5	C	2	Total	Cl	0	0
			2	2		
5	A	2	Total	Cl	0	0
			2	2		
5	F	1	Total	Cl	0	0
			1	1		

- Molecule 6 is GLYCEROL (three-letter code: GOL) (formula: $C_3H_8O_3$).



Mol	Chain	Residues	Atoms			ZeroOcc	AltConf
6	A	1	Total	C	O	0	0
			6	3	3		
6	A	1	Total	C	O	0	0
			6	3	3		
6	B	1	Total	C	O	0	0
			6	3	3		
6	B	1	Total	C	O	0	0
			6	3	3		
6	B	1	Total	C	O	0	0
			6	3	3		
6	B	1	Total	C	O	0	0
			6	3	3		
6	C	1	Total	C	O	0	0
			6	3	3		
6	C	1	Total	C	O	0	0
			6	3	3		
6	D	1	Total	C	O	0	0
			6	3	3		
6	D	1	Total	C	O	0	0
			6	3	3		
6	D	1	Total	C	O	0	0
			6	3	3		
6	E	1	Total	C	O	0	0
			6	3	3		

Continued on next page...

Continued from previous page...

Mol	Chain	Residues	Atoms			ZeroOcc	AltConf
6	E	1	Total	C	O	0	0
			6	3	3		
6	E	1	Total	C	O	0	0
			6	3	3		
6	F	1	Total	C	O	0	0
			6	3	3		
6	F	1	Total	C	O	0	0
			6	3	3		

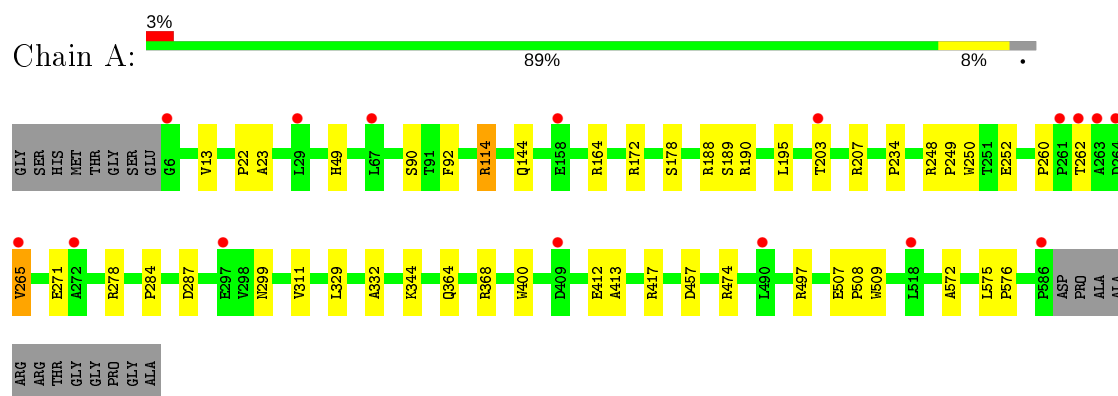
- Molecule 7 is water.

Mol	Chain	Residues	Atoms		ZeroOcc	AltConf
7	A	325	Total	O	0	0
			325	325		
7	B	362	Total	O	0	0
			362	362		
7	C	466	Total	O	0	0
			466	466		
7	D	411	Total	O	0	0
			411	411		
7	E	449	Total	O	0	0
			449	449		
7	F	329	Total	O	0	0
			329	329		

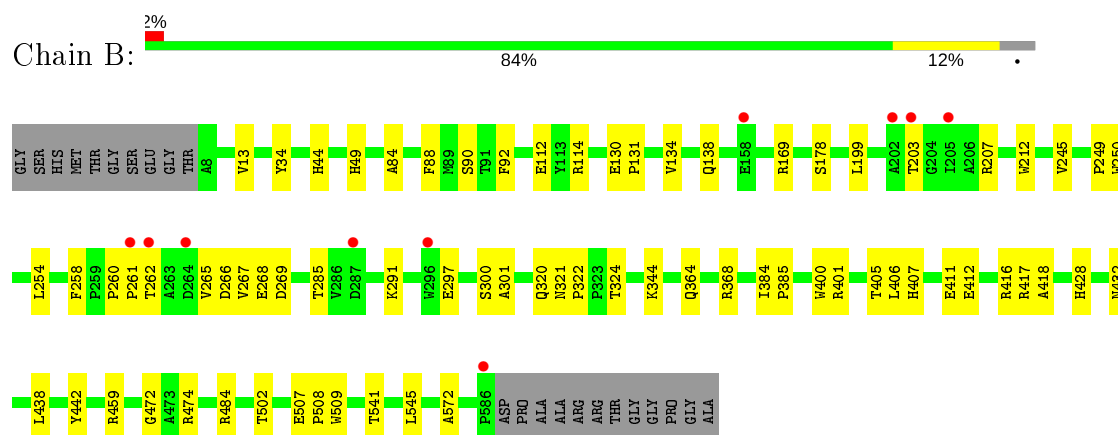
3 Residue-property plots [i](#)

These plots are drawn for all protein, RNA, DNA and oligosaccharide chains in the entry. The first graphic for a chain summarises the proportions of the various outlier classes displayed in the second graphic. The second graphic shows the sequence view annotated by issues in geometry and electron density. Residues are color-coded according to the number of geometric quality criteria for which they contain at least one outlier: green = 0, yellow = 1, orange = 2 and red = 3 or more. A red dot above a residue indicates a poor fit to the electron density ($RSRZ > 2$). Stretches of 2 or more consecutive residues without any outlier are shown as a green connector. Residues present in the sample, but not in the model, are shown in grey.

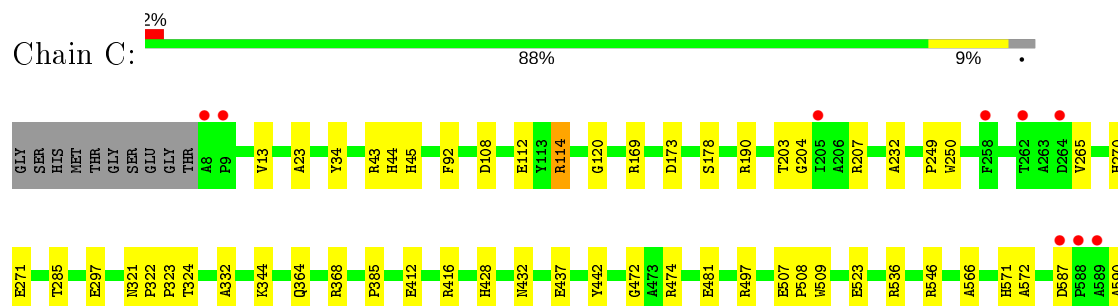
- Molecule 1: 2,4-dichlorophenol 6-monooxygenase



- Molecule 1: 2,4-dichlorophenol 6-monooxygenase



- Molecule 1: 2,4-dichlorophenol 6-monooxygenase



4 Data and refinement statistics

Property	Value	Source
Space group	P 21 21 21	Depositor
Cell constants a, b, c, α , β , γ	91.57Å 187.41Å 241.28Å 90.00° 90.00° 90.00°	Depositor
Resolution (Å)	49.34 – 2.02 49.34 – 2.02	Depositor EDS
% Data completeness (in resolution range)	99.8 (49.34-2.02) 99.8 (49.34-2.02)	Depositor EDS
R_{merge}	0.11	Depositor
R_{sym}	(Not available)	Depositor
$\langle I/\sigma(I) \rangle$ ¹	2.14 (at 2.01Å)	Xtriage
Refinement program	REFMAC 5.8.0238	Depositor
R, R_{free}	0.170 , 0.204 0.179 , 0.210	Depositor DCC
R_{free} test set	13453 reflections (4.97%)	wwPDB-VP
Wilson B-factor (Å ²)	29.6	Xtriage
Anisotropy	0.441	Xtriage
Bulk solvent k_{sol} (e/Å ³), B_{sol} (Å ²)	0.34 , 48.1	EDS
L-test for twinning ²	$\langle L \rangle = 0.49$, $\langle L^2 \rangle = 0.33$	Xtriage
Estimated twinning fraction	No twinning to report.	Xtriage
F_o, F_c correlation	0.96	EDS
Total number of atoms	29588	wwPDB-VP
Average B, all atoms (Å ²)	37.0	wwPDB-VP

Xtriage's analysis on translational NCS is as follows: *The largest off-origin peak in the Patterson function is 3.14% of the height of the origin peak. No significant pseudotranslation is detected.*

¹Intensities estimated from amplitudes.

²Theoretical values of $\langle |L| \rangle$, $\langle L^2 \rangle$ for acentric reflections are 0.5, 0.333 respectively for untwinned datasets, and 0.375, 0.2 for perfectly twinned datasets.

5 Model quality ⓘ

5.1 Standard geometry ⓘ

Bond lengths and bond angles in the following residue types are not validated in this section: GOL, PGE, 1PE, FAD, CL

The Z score for a bond length (or angle) is the number of standard deviations the observed value is removed from the expected value. A bond length (or angle) with $|Z| > 5$ is considered an outlier worth inspection. RMSZ is the root-mean-square of all Z scores of the bond lengths (or angles).

Mol	Chain	Bond lengths		Bond angles	
		RMSZ	# $ Z > 5$	RMSZ	# $ Z > 5$
1	A	0.77	0/4548	0.88	0/6209
1	B	0.75	0/4537	0.87	0/6194
1	C	0.77	2/4585 (0.0%)	0.92	2/6259 (0.0%)
1	D	0.75	1/4529 (0.0%)	0.92	3/6182 (0.0%)
1	E	0.77	3/4547 (0.1%)	0.92	2/6206 (0.0%)
1	F	0.75	2/4540 (0.0%)	0.88	2/6197 (0.0%)
All	All	0.76	8/27286 (0.0%)	0.90	9/37247 (0.0%)

The worst 5 of 8 bond length outliers are listed below:

Mol	Chain	Res	Type	Atoms	Z	Observed(Å)	Ideal(Å)
1	F	112	GLU	CD-OE1	8.98	1.35	1.25
1	D	112	GLU	CD-OE1	7.82	1.34	1.25
1	C	112	GLU	CD-OE1	7.66	1.34	1.25
1	C	437	GLU	CD-OE2	6.96	1.33	1.25
1	E	112	GLU	CD-OE1	6.92	1.33	1.25

The worst 5 of 9 bond angle outliers are listed below:

Mol	Chain	Res	Type	Atoms	Z	Observed(°)	Ideal(°)
1	C	114	ARG	NE-CZ-NH2	-8.04	116.28	120.30
1	F	114	ARG	NE-CZ-NH2	-6.51	117.05	120.30
1	D	536	ARG	NE-CZ-NH1	5.88	123.24	120.30
1	C	546	ARG	NE-CZ-NH2	-5.70	117.45	120.30
1	E	168	ARG	NE-CZ-NH1	5.68	123.14	120.30

There are no chirality outliers.

There are no planarity outliers.

5.2 Too-close contacts ⓘ

In the following table, the Non-H and H(model) columns list the number of non-hydrogen atoms and hydrogen atoms in the chain respectively. The H(added) column lists the number of hydrogen atoms added and optimized by MolProbity. The Clashes column lists the number of clashes within the asymmetric unit, whereas Symm-Clashes lists symmetry related clashes.

Mol	Chain	Non-H	H(model)	H(added)	Clashes	Symm-Clashes
1	A	4434	0	4307	26	0
1	B	4423	0	4297	45	0
1	C	4470	0	4344	39	0
1	D	4416	0	4290	41	0
1	E	4431	0	4310	42	0
1	F	4426	0	4297	35	0
2	A	53	0	31	0	0
2	B	53	0	31	1	0
2	C	53	0	31	3	0
2	D	53	0	31	1	0
2	E	53	0	31	2	0
2	F	53	0	31	1	0
3	A	20	0	28	1	0
3	B	20	0	28	1	0
3	C	20	0	28	3	0
3	D	20	0	28	1	0
3	E	20	0	28	2	0
3	F	20	0	28	1	0
4	A	16	0	22	0	0
4	B	16	0	22	2	0
4	C	16	0	22	4	0
4	D	16	0	22	2	0
4	E	16	0	22	0	0
4	F	16	0	22	5	0
5	A	2	0	0	0	0
5	B	1	0	0	0	0
5	C	2	0	0	0	0
5	D	2	0	0	0	0
5	E	2	0	0	0	0
5	F	1	0	0	0	0
6	A	12	0	16	1	0
6	B	24	0	32	3	0
6	C	12	0	16	1	0
6	D	24	0	32	4	0
6	E	18	0	24	4	0
6	F	12	0	16	2	0
7	A	325	0	0	2	0

Continued on next page...

Continued from previous page...

Mol	Chain	Non-H	H(model)	H(added)	Clashes	Symm-Clashes
7	B	362	0	0	10	0
7	C	466	0	0	8	0
7	D	411	0	0	10	0
7	E	449	0	0	10	0
7	F	329	0	0	10	0
All	All	29588	0	26467	228	0

The all-atom clashscore is defined as the number of clashes found per 1000 atoms (including hydrogen atoms). The all-atom clashscore for this structure is 4.

The worst 5 of 228 close contacts within the same asymmetric unit are listed below, sorted by their clash magnitude.

Atom-1	Atom-2	Interatomic distance (Å)	Clash overlap (Å)
1:F:502:THR:HB	7:F:716:HOH:O	1.51	1.09
1:A:114:ARG:HD3	7:A:773:HOH:O	1.59	1.01
6:D:609:GOL:H11	7:D:960:HOH:O	1.67	0.94
1:E:502:THR:HB	7:E:809:HOH:O	1.69	0.93
4:C:604:1PE:H262	7:C:924:HOH:O	1.75	0.86

There are no symmetry-related clashes.

5.3 Torsion angles [i](#)

5.3.1 Protein backbone [i](#)

In the following table, the Percentiles column shows the percent Ramachandran outliers of the chain as a percentile score with respect to all X-ray entries followed by that with respect to entries of similar resolution.

The Analysed column shows the number of residues for which the backbone conformation was analysed, and the total number of residues.

Mol	Chain	Analysed	Favoured	Allowed	Outliers	Percentiles	
1	A	579/601 (96%)	566 (98%)	12 (2%)	1 (0%)	47	43
1	B	577/601 (96%)	563 (98%)	12 (2%)	2 (0%)	41	36
1	C	583/601 (97%)	574 (98%)	8 (1%)	1 (0%)	47	43
1	D	576/601 (96%)	566 (98%)	10 (2%)	0	100	100
1	E	578/601 (96%)	569 (98%)	7 (1%)	2 (0%)	41	36

Continued on next page...

Continued from previous page...

Mol	Chain	Analysed	Favoured	Allowed	Outliers	Percentiles
1	F	577/601 (96%)	565 (98%)	11 (2%)	1 (0%)	47 43
All	All	3470/3606 (96%)	3403 (98%)	60 (2%)	7 (0%)	47 43

5 of 7 Ramachandran outliers are listed below:

Mol	Chain	Res	Type
1	C	591	ARG
1	A	90	SER
1	B	90	SER
1	E	262	THR
1	F	90	SER

5.3.2 Protein sidechains ⓘ

In the following table, the Percentiles column shows the percent sidechain outliers of the chain as a percentile score with respect to all X-ray entries followed by that with respect to entries of similar resolution.

The Analysed column shows the number of residues for which the sidechain conformation was analysed, and the total number of residues.

Mol	Chain	Analysed	Rotameric	Outliers	Percentiles
1	A	448/460 (97%)	434 (97%)	14 (3%)	40 38
1	B	447/460 (97%)	437 (98%)	10 (2%)	52 53
1	C	451/460 (98%)	441 (98%)	10 (2%)	52 53
1	D	446/460 (97%)	431 (97%)	15 (3%)	37 35
1	E	448/460 (97%)	435 (97%)	13 (3%)	42 41
1	F	448/460 (97%)	433 (97%)	15 (3%)	38 36
All	All	2688/2760 (97%)	2611 (97%)	77 (3%)	42 41

5 of 77 residues with a non-rotameric sidechain are listed below:

Mol	Chain	Res	Type
1	D	12	ARG
1	D	322	PRO
1	F	401	ARG
1	D	92	PHE
1	D	262	THR

Some sidechains can be flipped to improve hydrogen bonding and reduce clashes. 5 of 14 such sidechains are listed below:

Mol	Chain	Res	Type
1	C	44	HIS
1	C	428	HIS
1	E	428	HIS
1	B	428	HIS
1	E	321	ASN

5.3.3 RNA ⓘ

There are no RNA molecules in this entry.

5.4 Non-standard residues in protein, DNA, RNA chains ⓘ

There are no non-standard protein/DNA/RNA residues in this entry.

5.5 Carbohydrates ⓘ

There are no monosaccharides in this entry.

5.6 Ligand geometry ⓘ

Of 51 ligands modelled in this entry, 10 are monoatomic - leaving 41 for Mogul analysis.

In the following table, the Counts columns list the number of bonds (or angles) for which Mogul statistics could be retrieved, the number of bonds (or angles) that are observed in the model and the number of bonds (or angles) that are defined in the Chemical Component Dictionary. The Link column lists molecule types, if any, to which the group is linked. The Z score for a bond length (or angle) is the number of standard deviations the observed value is removed from the expected value. A bond length (or angle) with $|Z| > 2$ is considered an outlier worth inspection. RMSZ is the root-mean-square of all Z scores of the bond lengths (or angles).

Mol	Type	Chain	Res	Link	Bond lengths			Bond angles		
					Counts	RMSZ	$\# Z > 2$	Counts	RMSZ	$\# Z > 2$
6	GOL	C	608	-	5,5,5	0.18	0	5,5,5	0.45	0
2	FAD	A	601	-	51,58,58	2.23	12 (23%)	60,89,89	2.53	12 (20%)
6	GOL	D	608	-	5,5,5	0.15	0	5,5,5	0.46	0
6	GOL	B	609	-	5,5,5	0.18	0	5,5,5	0.48	0
3	PGE	D	603	-	9,9,9	0.38	0	8,8,8	0.21	0
3	PGE	E	603	-	9,9,9	0.52	0	8,8,8	0.43	0
2	FAD	D	601	-	51,58,58	2.38	10 (19%)	60,89,89	2.44	17 (28%)

Mol	Type	Chain	Res	Link	Bond lengths			Bond angles		
					Counts	RMSZ	# Z > 2	Counts	RMSZ	# Z > 2
3	PGE	C	602	-	9,9,9	0.15	0	8,8,8	0.12	0
2	FAD	E	601	-	51,58,58	2.34	11 (21%)	60,89,89	2.45	13 (21%)
3	PGE	A	603	-	9,9,9	0.37	0	8,8,8	0.16	0
6	GOL	A	607	-	5,5,5	0.30	0	5,5,5	0.54	0
6	GOL	C	607	-	5,5,5	0.39	0	5,5,5	0.96	0
3	PGE	B	602	-	9,9,9	0.35	0	8,8,8	0.31	0
6	GOL	B	607	-	5,5,5	0.38	0	5,5,5	0.94	0
6	GOL	E	609	-	5,5,5	0.19	0	5,5,5	0.50	0
3	PGE	C	603	-	9,9,9	0.45	0	8,8,8	0.37	0
6	GOL	D	609	-	5,5,5	0.27	0	5,5,5	0.57	0
6	GOL	E	607	-	5,5,5	0.34	0	5,5,5	0.89	0
3	PGE	A	602	-	9,9,9	0.55	0	8,8,8	0.40	0
3	PGE	F	603	-	9,9,9	0.28	0	8,8,8	0.29	0
2	FAD	B	601	-	51,58,58	2.58	12 (23%)	60,89,89	2.30	13 (21%)
6	GOL	F	607	-	5,5,5	0.23	0	5,5,5	0.52	0
6	GOL	A	608	-	5,5,5	0.13	0	5,5,5	0.43	0
2	FAD	C	601	-	51,58,58	2.60	12 (23%)	60,89,89	2.15	18 (30%)
3	PGE	D	602	-	9,9,9	0.27	0	8,8,8	0.18	0
4	1PE	C	604	-	15,15,15	0.91	0	14,14,14	1.07	1 (7%)
4	1PE	E	604	-	15,15,15	0.89	0	14,14,14	1.03	2 (14%)
4	1PE	D	604	-	15,15,15	0.77	0	14,14,14	0.74	0
3	PGE	B	603	-	9,9,9	0.27	0	8,8,8	0.15	0
2	FAD	F	602	-	51,58,58	2.38	9 (17%)	60,89,89	2.68	15 (25%)
3	PGE	F	604	-	9,9,9	0.47	0	8,8,8	0.29	0
6	GOL	D	610	-	5,5,5	0.27	0	5,5,5	0.99	0
6	GOL	B	606	-	5,5,5	0.22	0	5,5,5	0.51	0
6	GOL	B	608	-	5,5,5	0.15	0	5,5,5	0.44	0
6	GOL	D	607	-	5,5,5	0.22	0	5,5,5	0.49	0
4	1PE	F	605	-	15,15,15	0.83	0	14,14,14	0.81	0
6	GOL	E	608	-	5,5,5	0.23	0	5,5,5	0.58	0
4	1PE	A	604	-	15,15,15	0.70	0	14,14,14	0.48	0
4	1PE	B	604	-	15,15,15	0.76	0	14,14,14	0.67	0
3	PGE	E	602	-	9,9,9	0.60	0	8,8,8	0.48	0
6	GOL	F	601	-	5,5,5	0.21	0	5,5,5	0.46	0

In the following table, the Chirals column lists the number of chiral outliers, the number of chiral centers analysed, the number of these observed in the model and the number defined in the Chemical Component Dictionary. Similar counts are reported in the Torsion and Rings columns. '-' means no outliers of that kind were identified.

Mol	Type	Chain	Res	Link	Chirals	Torsions	Rings
6	GOL	C	608	-	-	4/4/4/4	-
2	FAD	A	601	-	-	3/30/50/50	0/6/6/6
6	GOL	D	608	-	-	2/4/4/4	-
6	GOL	B	609	-	-	0/4/4/4	-
3	PGE	D	603	-	-	5/7/7/7	-
3	PGE	E	603	-	-	4/7/7/7	-
2	FAD	D	601	-	-	3/30/50/50	0/6/6/6
3	PGE	C	602	-	-	2/7/7/7	-
2	FAD	E	601	-	-	3/30/50/50	0/6/6/6
3	PGE	A	603	-	-	2/7/7/7	-
6	GOL	A	607	-	-	2/4/4/4	-
6	GOL	C	607	-	-	4/4/4/4	-
3	PGE	B	602	-	-	6/7/7/7	-
6	GOL	B	607	-	-	0/4/4/4	-
6	GOL	E	609	-	-	4/4/4/4	-
3	PGE	C	603	-	-	3/7/7/7	-
6	GOL	D	609	-	-	3/4/4/4	-
6	GOL	E	607	-	-	1/4/4/4	-
3	PGE	A	602	-	-	3/7/7/7	-
3	PGE	F	603	-	-	1/7/7/7	-
2	FAD	B	601	-	-	2/30/50/50	0/6/6/6
6	GOL	F	607	-	-	2/4/4/4	-
6	GOL	A	608	-	-	4/4/4/4	-
2	FAD	C	601	-	-	1/30/50/50	0/6/6/6
3	PGE	D	602	-	-	5/7/7/7	-
4	1PE	C	604	-	-	7/13/13/13	-
4	1PE	E	604	-	-	9/13/13/13	-
4	1PE	D	604	-	-	6/13/13/13	-
3	PGE	B	603	-	-	4/7/7/7	-
2	FAD	F	602	-	-	3/30/50/50	0/6/6/6
3	PGE	F	604	-	-	5/7/7/7	-
6	GOL	D	610	-	-	0/4/4/4	-
6	GOL	B	606	-	-	4/4/4/4	-
6	GOL	B	608	-	-	4/4/4/4	-
6	GOL	D	607	-	-	2/4/4/4	-
4	1PE	F	605	-	-	5/13/13/13	-

Continued on next page...

Continued from previous page...

Mol	Type	Chain	Res	Link	Chirals	Torsions	Rings
6	GOL	E	608	-	-	3/4/4/4	-
4	1PE	A	604	-	-	5/13/13/13	-
4	1PE	B	604	-	-	7/13/13/13	-
3	PGE	E	602	-	-	6/7/7/7	-
6	GOL	F	601	-	-	2/4/4/4	-

The worst 5 of 66 bond length outliers are listed below:

Mol	Chain	Res	Type	Atoms	Z	Observed(Å)	Ideal(Å)
2	B	601	FAD	C4X-C10	12.30	1.51	1.38
2	C	601	FAD	C4X-C10	12.26	1.51	1.38
2	D	601	FAD	C4X-C10	11.98	1.50	1.38
2	E	601	FAD	C4X-C10	11.60	1.50	1.38
2	F	602	FAD	C4X-C10	11.53	1.50	1.38

The worst 5 of 91 bond angle outliers are listed below:

Mol	Chain	Res	Type	Atoms	Z	Observed(°)	Ideal(°)
2	F	602	FAD	C4-C4X-C10	-10.95	112.70	119.95
2	F	602	FAD	C4-N3-C2	10.38	123.91	115.14
2	D	601	FAD	C4-N3-C2	9.45	123.12	115.14
2	A	601	FAD	C4-C4X-C10	-9.04	113.96	119.95
2	E	601	FAD	C4-C4X-C10	-8.55	114.29	119.95

There are no chirality outliers.

5 of 141 torsion outliers are listed below:

Mol	Chain	Res	Type	Atoms
6	C	608	GOL	O1-C1-C2-O2
6	C	608	GOL	O1-C1-C2-C3
2	A	601	FAD	C5'-O5'-P-O2P
2	A	601	FAD	C5'-O5'-P-O3P
2	D	601	FAD	C5'-O5'-P-O2P

There are no ring outliers.

27 monomers are involved in 45 short contacts:

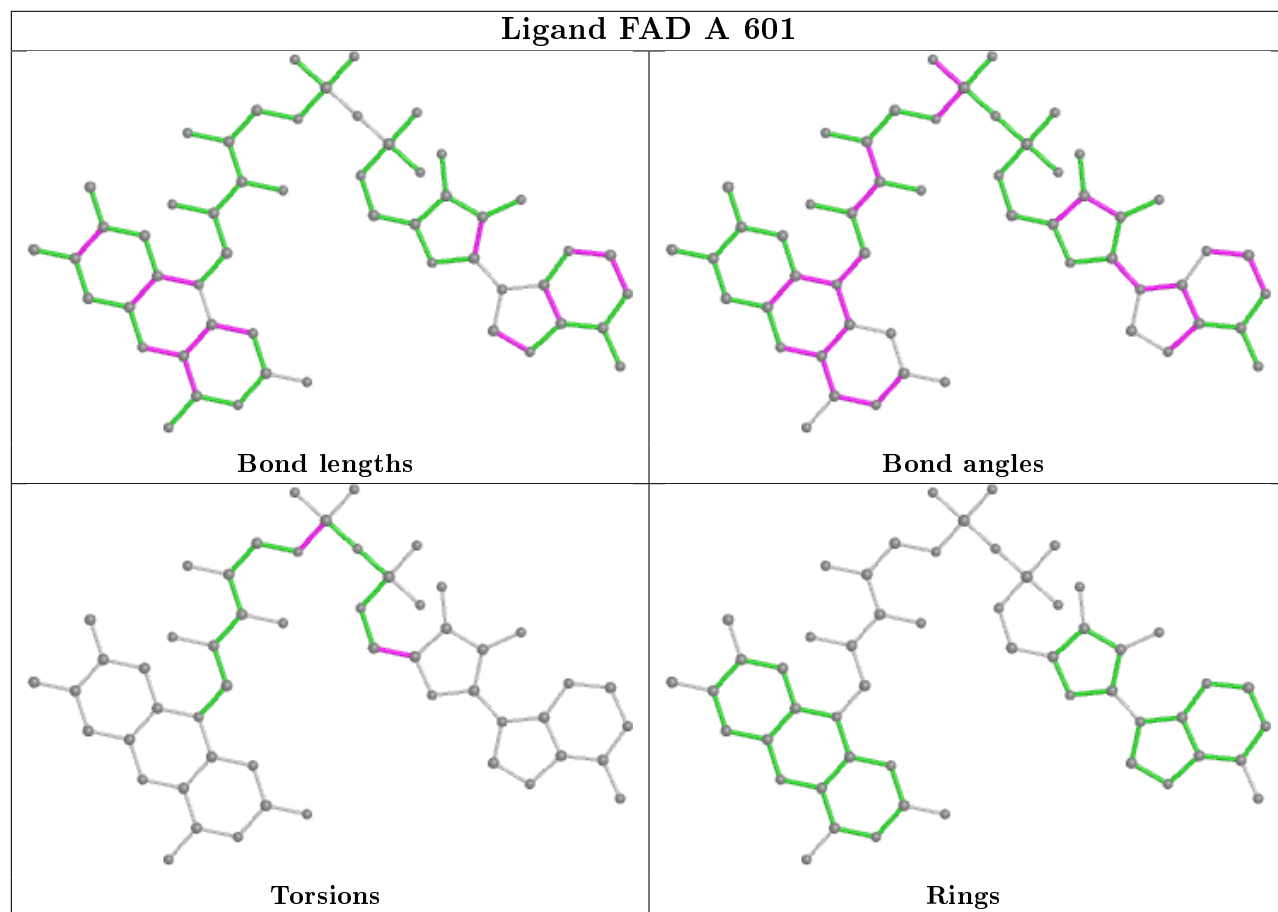
Mol	Chain	Res	Type	Clashes	Symm-Clashes
6	B	609	GOL	2	0
3	E	603	PGE	1	0

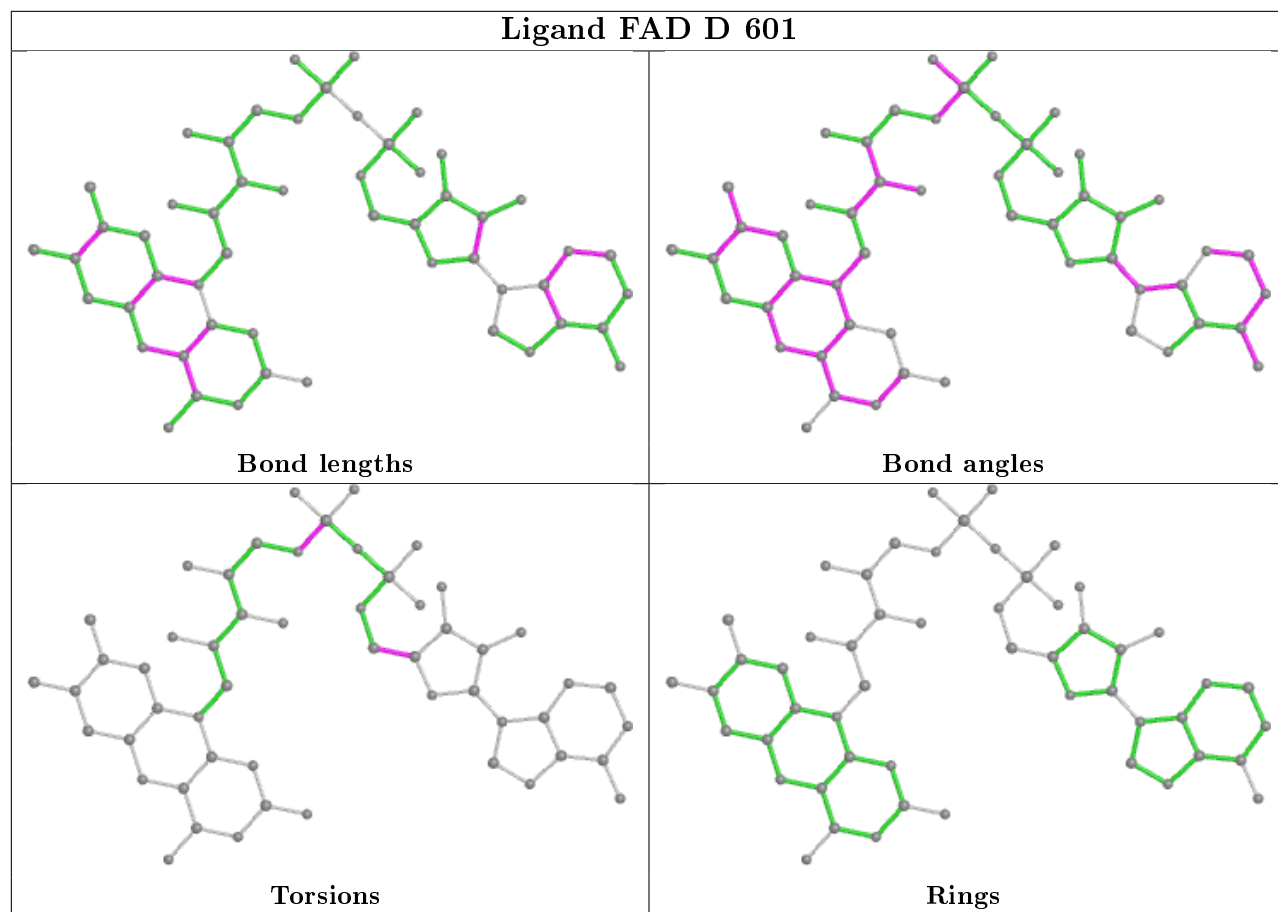
Continued on next page...

Continued from previous page...

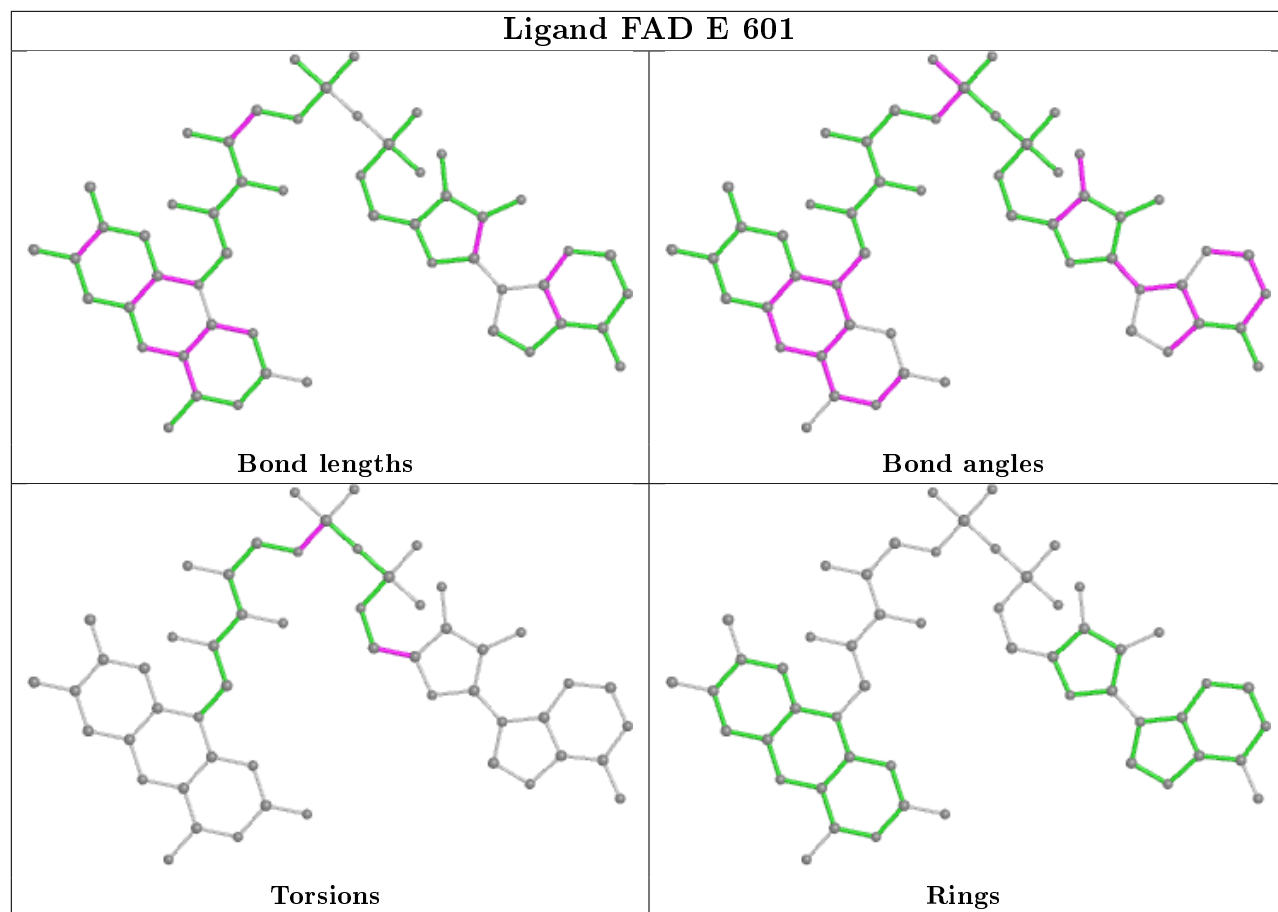
Mol	Chain	Res	Type	Clashes	Symm-Clashes
2	D	601	FAD	1	0
3	C	602	PGE	1	0
2	E	601	FAD	2	0
6	C	607	GOL	1	0
3	C	603	PGE	2	0
6	D	609	GOL	1	0
6	E	607	GOL	1	0
3	A	602	PGE	1	0
2	B	601	FAD	1	0
6	A	608	GOL	1	0
2	C	601	FAD	3	0
3	D	602	PGE	1	0
4	C	604	1PE	4	0
4	D	604	1PE	2	0
3	B	603	PGE	1	0
2	F	602	FAD	1	0
3	F	604	PGE	1	0
6	D	610	GOL	2	0
6	B	606	GOL	1	0
6	D	607	GOL	1	0
4	F	605	1PE	5	0
6	E	608	GOL	3	0
4	B	604	1PE	2	0
3	E	602	PGE	1	0
6	F	601	GOL	2	0

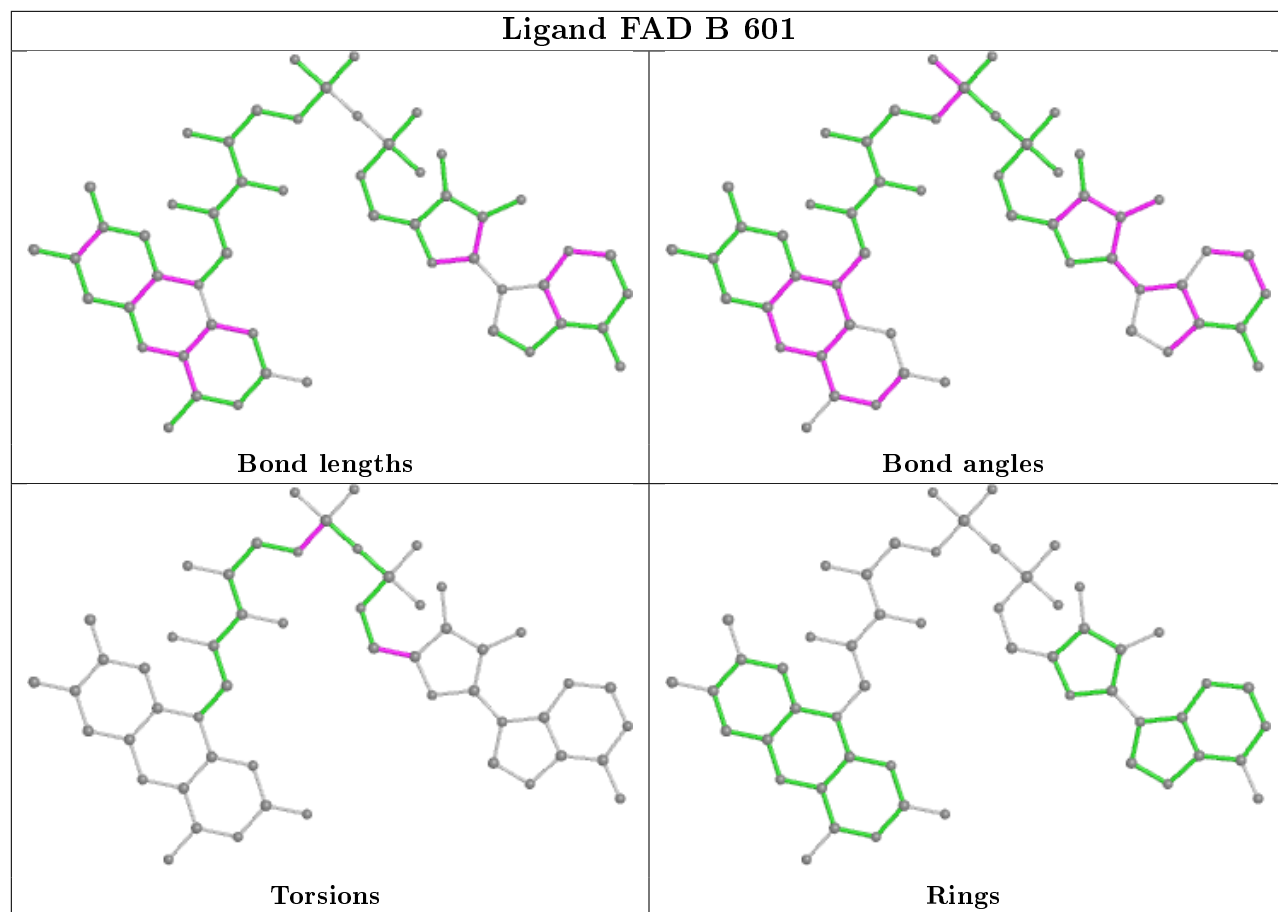
The following is a two-dimensional graphical depiction of Mogul quality analysis of bond lengths, bond angles, torsion angles, and ring geometry for all instances of the Ligand of Interest. In addition, ligands with molecular weight > 250 and outliers as shown on the validation Tables will also be included. For torsion angles, if less than 5% of the Mogul distribution of torsion angles is within 10 degrees of the torsion angle in question, then that torsion angle is considered an outlier. Any bond that is central to one or more torsion angles identified as an outlier by Mogul will be highlighted in the graph. For rings, the root-mean-square deviation (RMSD) between the ring in question and similar rings identified by Mogul is calculated over all ring torsion angles. If the average RMSD is greater than 60 degrees and the minimal RMSD between the ring in question and any Mogul-identified rings is also greater than 60 degrees, then that ring is considered an outlier. The outliers are highlighted in purple. The color gray indicates Mogul did not find sufficient equivalents in the CSD to analyse the geometry.

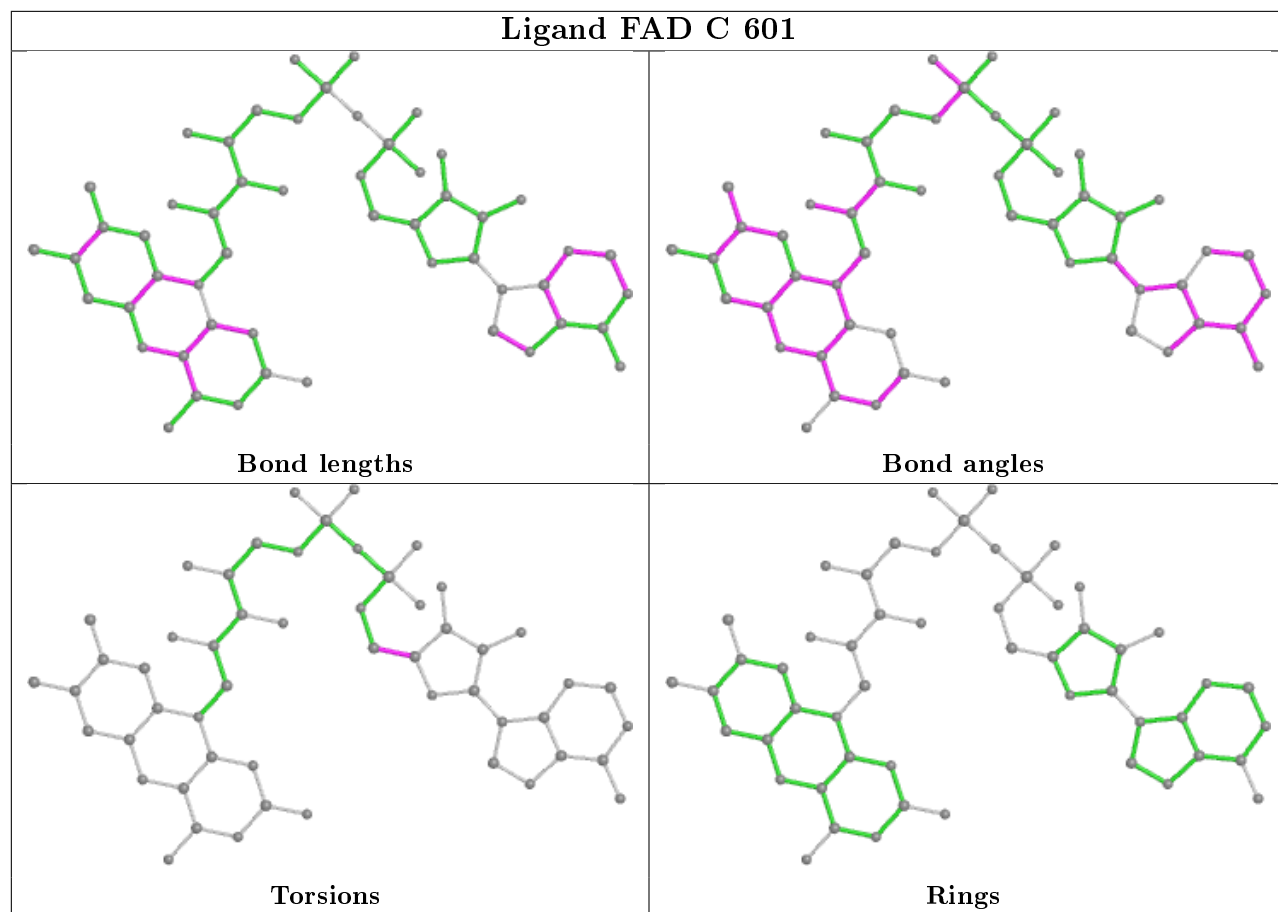


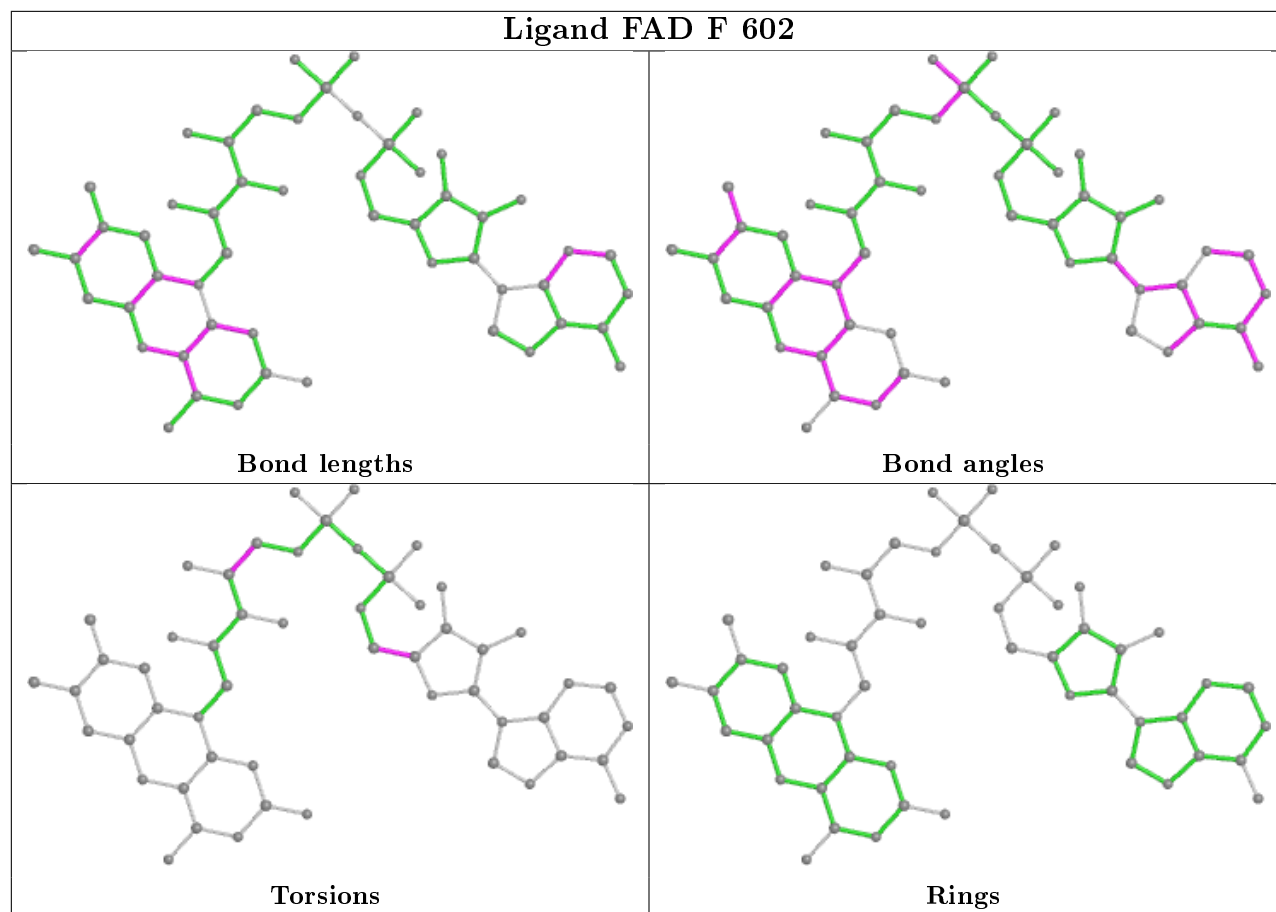


Ligand FAD E 601









5.7 Other polymers [i](#)

There are no such residues in this entry.

5.8 Polymer linkage issues [i](#)

There are no chain breaks in this entry.

6 Fit of model and data [i](#)

6.1 Protein, DNA and RNA chains [i](#)

In the following table, the column labelled ‘#RSRZ> 2’ contains the number (and percentage) of RSRZ outliers, followed by percent RSRZ outliers for the chain as percentile scores relative to all X-ray entries and entries of similar resolution. The OWAB column contains the minimum, median, 95th percentile and maximum values of the occupancy-weighted average B-factor per residue. The column labelled ‘Q< 0.9’ lists the number of (and percentage) of residues with an average occupancy less than 0.9.

Mol	Chain	Analysed	<RSRZ>	#RSRZ>2	OWAB(Å ²)	Q<0.9
1	A	581/601 (96%)	-0.03	16 (2%) 53 52	23, 36, 63, 111	0
1	B	579/601 (96%)	-0.13	10 (1%) 70 69	20, 34, 66, 109	0
1	C	585/601 (97%)	-0.23	10 (1%) 70 69	16, 28, 54, 81	0
1	D	578/601 (96%)	-0.15	10 (1%) 70 69	19, 32, 63, 95	0
1	E	579/601 (96%)	-0.21	4 (0%) 87 87	17, 30, 55, 85	0
1	F	579/601 (96%)	-0.05	13 (2%) 62 61	21, 37, 66, 92	0
All	All	3481/3606 (96%)	-0.13	63 (1%) 68 67	16, 33, 63, 111	0

The worst 5 of 63 RSRZ outliers are listed below:

Mol	Chain	Res	Type	RSRZ
1	B	264	ASP	4.9
1	C	8	ALA	4.3
1	D	264	ASP	4.3
1	F	586	PRO	4.1
1	D	413	ALA	4.0

6.2 Non-standard residues in protein, DNA, RNA chains [i](#)

There are no non-standard protein/DNA/RNA residues in this entry.

6.3 Carbohydrates [i](#)

There are no monosaccharides in this entry.

6.4 Ligands ⓘ

In the following table, the Atoms column lists the number of modelled atoms in the group and the number defined in the chemical component dictionary. The B-factors column lists the minimum, median, 95th percentile and maximum values of B factors of atoms in the group. The column labelled 'Q< 0.9' lists the number of atoms with occupancy less than 0.9.

Mol	Type	Chain	Res	Atoms	RSCC	RSR	B-factors(Å ²)	Q<0.9
3	PGE	D	603	10/10	0.70	0.25	60,68,70,71	0
3	PGE	C	603	10/10	0.77	0.22	44,53,57,62	0
3	PGE	E	603	10/10	0.78	0.33	51,56,63,64	0
6	GOL	B	609	6/6	0.80	0.23	47,57,59,63	0
3	PGE	F	604	10/10	0.80	0.23	42,56,64,65	0
4	1PE	E	604	16/16	0.81	0.19	41,51,63,67	0
3	PGE	A	603	10/10	0.81	0.23	56,61,67,69	0
6	GOL	D	610	6/6	0.81	0.18	51,55,57,61	0
4	1PE	B	604	16/16	0.81	0.20	49,56,62,62	0
6	GOL	B	607	6/6	0.82	0.18	52,59,65,66	0
6	GOL	F	607	6/6	0.83	0.16	62,65,66,68	0
6	GOL	A	608	6/6	0.83	0.27	52,58,61,64	0
4	1PE	F	605	16/16	0.84	0.19	45,52,66,68	0
4	1PE	D	604	16/16	0.85	0.18	41,53,61,62	0
4	1PE	A	604	16/16	0.86	0.21	41,54,61,61	0
6	GOL	C	608	6/6	0.86	0.18	51,53,56,57	0
3	PGE	B	603	10/10	0.87	0.25	57,60,68,71	0
6	GOL	C	607	6/6	0.87	0.19	46,49,57,57	0
3	PGE	E	602	10/10	0.87	0.24	40,44,47,49	0
6	GOL	E	607	6/6	0.88	0.21	46,59,61,63	0
6	GOL	D	609	6/6	0.88	0.20	44,45,49,50	0
6	GOL	B	608	6/6	0.89	0.18	49,54,56,58	0
6	GOL	D	607	6/6	0.89	0.17	53,58,59,62	0
6	GOL	E	609	6/6	0.89	0.19	52,56,57,65	0
6	GOL	A	607	6/6	0.89	0.13	50,58,58,65	0
4	1PE	C	604	16/16	0.89	0.15	38,50,61,63	0
3	PGE	F	603	10/10	0.89	0.17	46,50,54,57	0
6	GOL	D	608	6/6	0.90	0.17	52,62,66,66	0
6	GOL	B	606	6/6	0.90	0.24	46,53,55,55	0
5	CL	C	606	1/1	0.91	0.10	60,60,60,60	0
6	GOL	E	608	6/6	0.92	0.13	38,48,49,52	0
3	PGE	B	602	10/10	0.92	0.18	43,47,48,52	0
6	GOL	F	601	6/6	0.92	0.19	48,50,53,57	0
3	PGE	A	602	10/10	0.93	0.20	42,48,52,52	0
3	PGE	D	602	10/10	0.93	0.18	41,47,50,52	0
5	CL	A	605	1/1	0.94	0.24	48,48,48,48	0
5	CL	D	606	1/1	0.94	0.07	55,55,55,55	0

Continued on next page...

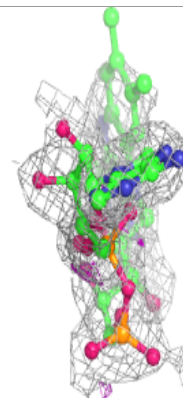
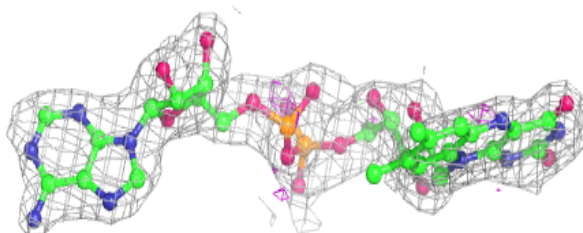
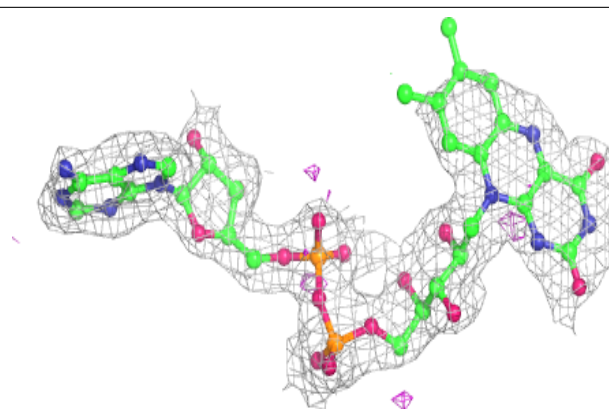
Continued from previous page...

Mol	Type	Chain	Res	Atoms	RSCC	RSR	B-factors(\AA^2)	Q<0.9
2	FAD	B	601	53/53	0.95	0.15	33,47,73,76	0
5	CL	E	605	1/1	0.95	0.12	43,43,43,43	0
2	FAD	F	602	53/53	0.95	0.14	37,50,73,75	0
3	PGE	C	602	10/10	0.95	0.15	40,43,47,50	0
5	CL	D	605	1/1	0.96	0.11	41,41,41,41	0
2	FAD	A	601	53/53	0.96	0.11	30,43,64,71	0
5	CL	B	605	1/1	0.96	0.12	45,45,45,45	0
2	FAD	E	601	53/53	0.96	0.11	25,37,66,72	0
2	FAD	C	601	53/53	0.97	0.10	25,35,59,62	0
5	CL	E	606	1/1	0.97	0.06	46,46,46,46	0
5	CL	A	606	1/1	0.97	0.09	51,51,51,51	0
5	CL	F	606	1/1	0.97	0.20	51,51,51,51	0
2	FAD	D	601	53/53	0.97	0.10	30,41,64,71	0
5	CL	C	605	1/1	0.98	0.16	41,41,41,41	0

The following is a graphical depiction of the model fit to experimental electron density of all instances of the Ligand of Interest. In addition, ligands with molecular weight > 250 and outliers as shown on the geometry validation Tables will also be included. Each fit is shown from different orientation to approximate a three-dimensional view.

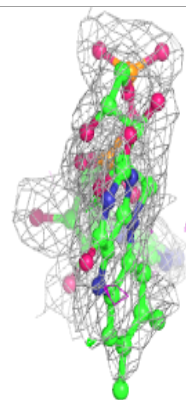
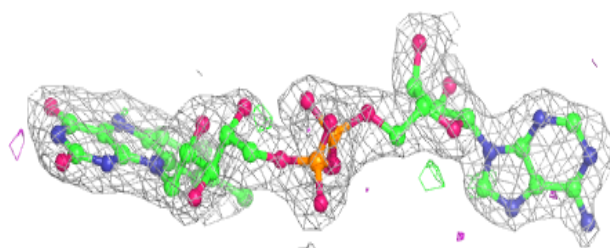
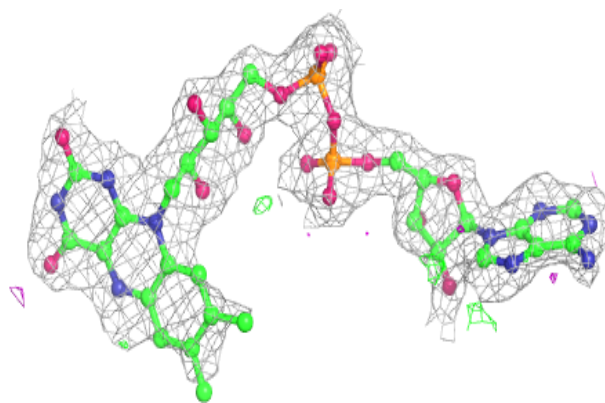
Electron density around FAD B 601:

2mF_o-DF_c (at 0.7 rmsd) in gray
mF_o-DF_c (at 3 rmsd) in purple (negative)
and green (positive)

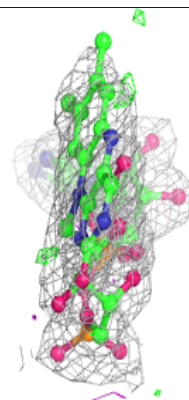
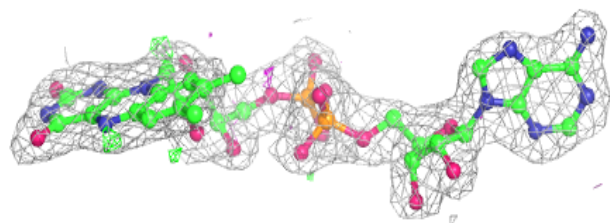
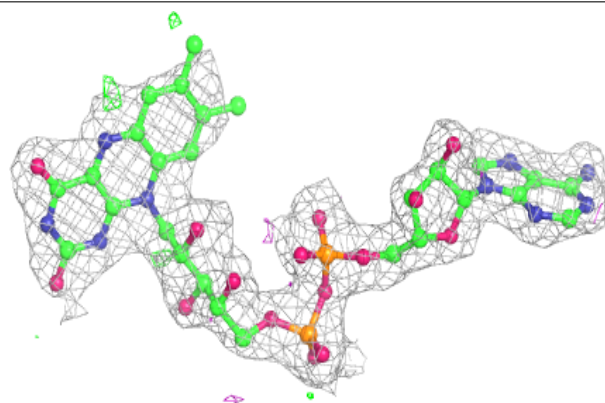


Electron density around FAD F 602:

$2mF_o - DF_c$ (at 0.7 rmsd) in gray
 $mF_o - DF_c$ (at 3 rmsd) in purple (negative)
and green (positive)

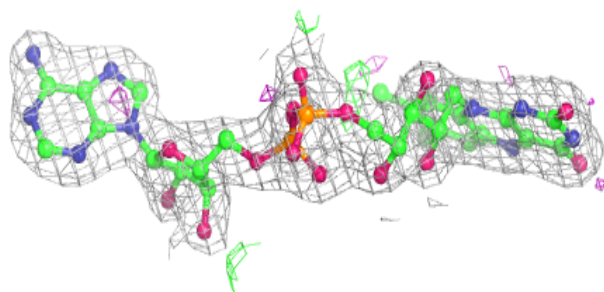
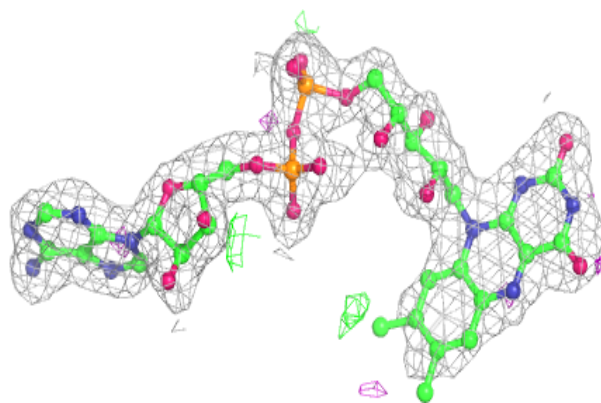
**Electron density around FAD A 601:**

$2mF_o - DF_c$ (at 0.7 rmsd) in gray
 $mF_o - DF_c$ (at 3 rmsd) in purple (negative)
and green (positive)

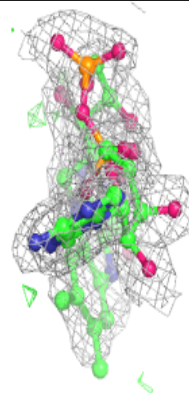
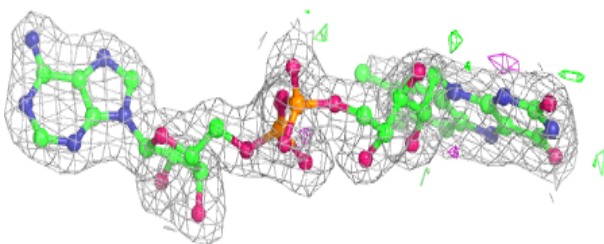
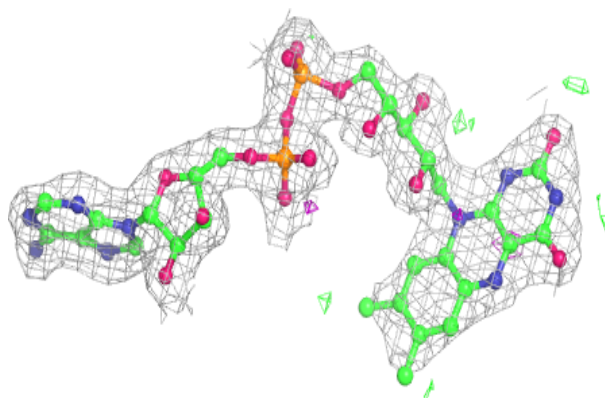


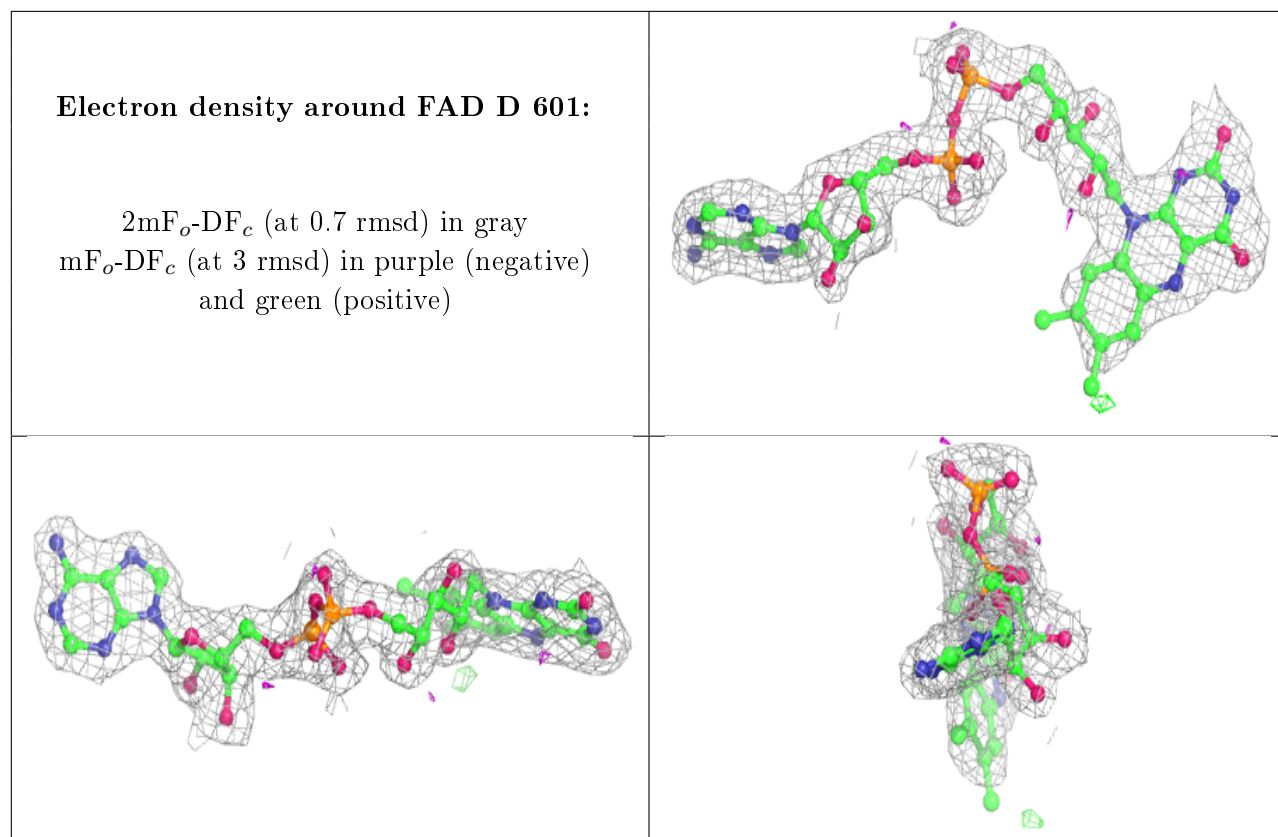
Electron density around FAD E 601:

$2mF_o-DF_c$ (at 0.7 rmsd) in gray
 mF_o-DF_c (at 3 rmsd) in purple (negative)
and green (positive)

**Electron density around FAD C 601:**

$2mF_o-DF_c$ (at 0.7 rmsd) in gray
 mF_o-DF_c (at 3 rmsd) in purple (negative)
and green (positive)





6.5 Other polymers [i](#)

There are no such residues in this entry.