



# Full wwPDB X-ray Structure Validation Report ⓘ

Aug 6, 2020 – 11:37 PM BST

PDB ID : 5U43  
Title : Human PPARdelta ligand-binding domain in complexed with specific agonist 12  
Authors : Wu, C.-C.; Baiga, T.J.; Downes, M.; La Clair, J.J.; Atkins, A.R.; Richard, S.B.; Stockley-Noel, T.A.; Bowman, M.E.; Evans, R.M.; Noel, J.P.  
Deposited on : 2016-12-03  
Resolution : 1.90 Å(reported)

This is a Full wwPDB X-ray Structure Validation Report for a publicly released PDB entry.

We welcome your comments at [validation@mail.wwpdb.org](mailto:validation@mail.wwpdb.org)

A user guide is available at

<https://www.wwpdb.org/validation/2017/XrayValidationReportHelp>

with specific help available everywhere you see the ⓘ symbol.

---

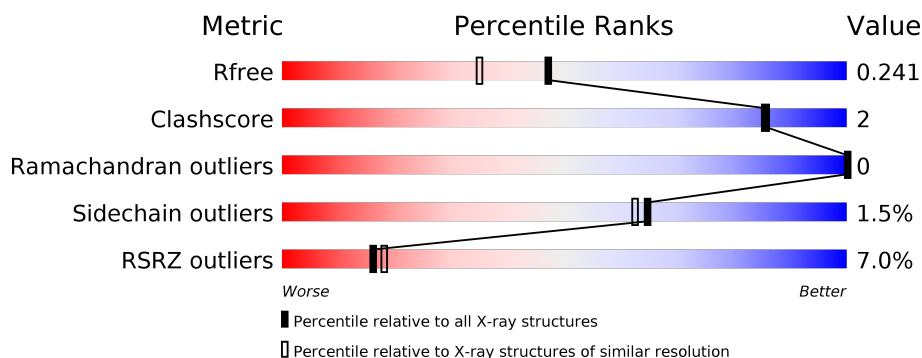
The following versions of software and data (see [references ⓘ](#)) were used in the production of this report:

MolProbity : 4.02b-467  
Mogul : 1.8.5 (274361), CSD as541be (2020)  
Xtriage (Phenix) : 1.13  
EDS : 2.13.1  
buster-report : 1.1.7 (2018)  
Percentile statistics : 20191225.v01 (using entries in the PDB archive December 25th 2019)  
Refmac : 5.8.0158  
CCP4 : 7.0.044 (Gargrove)  
Ideal geometry (proteins) : Engh & Huber (2001)  
Ideal geometry (DNA, RNA) : Parkinson et al. (1996)  
Validation Pipeline (wwPDB-VP) : 2.13.1

i

## X-RAY DIFFRACTION

Percentile scores (ranging between 0-100) for global validation metrics of the entry are shown in the following graphic. The table shows the number of entries on which the scores are based.



<b>Metric</b>	<b>Whole archive (#Entries)</b>	<b>Similar resolution (#Entries, resolution range(Å))</b>
R <sub>free</sub>	130704	6207 (1.90-1.90)
Clashscore	141614	6847 (1.90-1.90)
Ramachandran outliers	138981	6760 (1.90-1.90)
Sidechain outliers	138945	6760 (1.90-1.90)
RSRZ outliers	127900	6082 (1.90-1.90)

The table below summarises the geometric issues observed across the polymeric chains and their fit to the electron density. The red, orange, yellow and green segments on the lower bar indicate the fraction of residues that contain outliers for  $\geq 3$ , 2, 1 and 0 types of geometric quality criteria respectively. A grey segment represents the fraction of residues that are not modelled. The numeric value for each fraction is indicated below the corresponding segment, with a dot representing fractions  $\leq 5\%$ . The upper red bar (where present) indicates the fraction of residues that have poor fit to the electron density. The numeric value is given above the bar.

Mol	Chain	Length	Quality of chain
1	A	272	<div> <div>6%</div> <div>91%</div> <div>7%</div> </div>
1	B	272	<div> <div>8%</div> <div>87%</div> <div>9%</div> </div>

## 2 Entry composition [i](#)

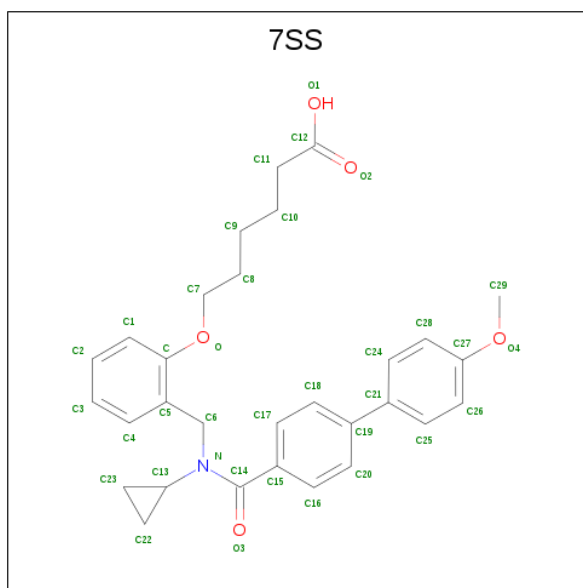
There are 6 unique types of molecules in this entry. The entry contains 9398 atoms, of which 4639 are hydrogens and 0 are deuteriums.

In the tables below, the ZeroOcc column contains the number of atoms modelled with zero occupancy, the AltConf column contains the number of residues with at least one atom in alternate conformation and the Trace column contains the number of residues modelled with at most 2 atoms.

- Molecule 1 is a protein called Peroxisome proliferator-activated receptor delta.

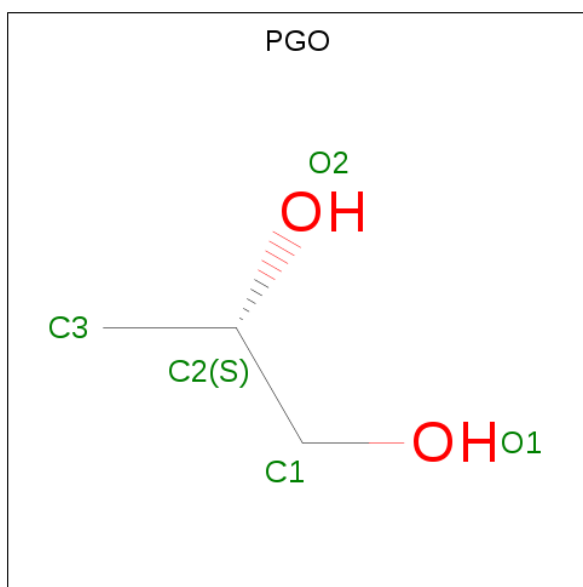
Mol	Chain	Residues	Atoms						ZeroOcc	AltConf	Trace
1	A	266	Total	C	H	N	O	S	0	16	0
			4449	1424	2254	370	392	9			
1	B	262	Total	C	H	N	O	S	0	5	0
			4289	1374	2171	355	378	11			

- Molecule 2 is 6-(2-([cyclopropyl(4'-methoxy[1,1'-biphenyl]-4-carbonyl)amino)methyl]phenoxy)hexanoic acid (three-letter code: 7SS) (formula: C<sub>30</sub>H<sub>33</sub>NO<sub>5</sub>).



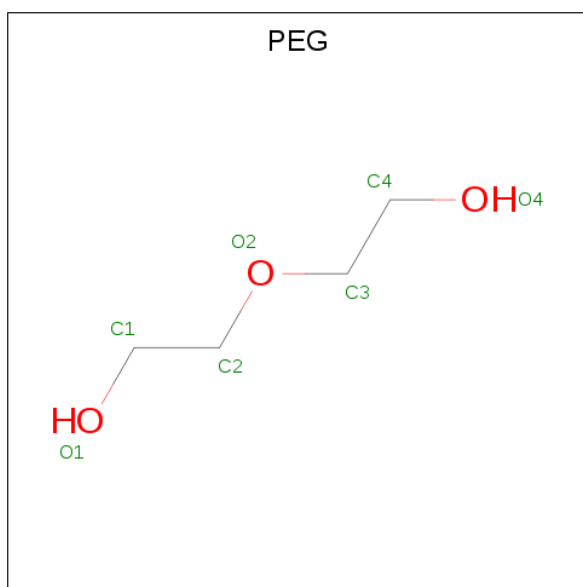
Mol	Chain	Residues	Atoms					ZeroOcc	AltConf
2	A	1	Total	C	H	N	O	0	0
			68	30	32	1	5		
2	B	1	Total	C	H	N	O	0	0
			68	30	32	1	5		

- Molecule 3 is S-1,2-PROPANEDIOL (three-letter code: PGO) (formula: C<sub>3</sub>H<sub>8</sub>O<sub>2</sub>).



Mol	Chain	Residues	Atoms				ZeroOcc	AltConf
3	A	1	Total	C	H	O	0	1
			26	6	16	4		
3	B	1	Total	C	H	O	0	0
			13	3	8	2		
3	B	1	Total	C	H	O	0	0
			13	3	8	2		

- Molecule 4 is DI(HYDROXYETHYL)ETHER (three-letter code: PEG) (formula:  $C_4H_{10}O_3$ ).



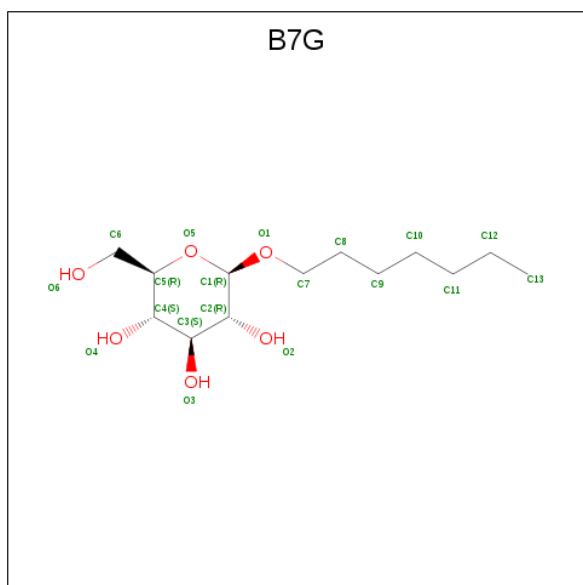
Mol	Chain	Residues	Atoms				ZeroOcc	AltConf
4	A	1	Total	C	H	O	0	1
			34	8	20	6		

Continued on next page...

*Continued from previous page...*

Mol	Chain	Residues	Atoms				ZeroOcc	AltConf
4	A	1	Total	C	H	O	0	0
			17	4	10	3		
4	B	1	Total	C	H	O	0	0
			17	4	10	3		

- Molecule 5 is heptyl beta-D-glucopyranoside (three-letter code: B7G) (formula: C<sub>13</sub>H<sub>26</sub>O<sub>6</sub>).



Mol	Chain	Residues	Atoms				ZeroOcc	AltConf
5	A	1	Total	C	H	O	0	0
			45	13	26	6		
5	A	1	Total	C	H	O	0	0
			45	13	26	6		
5	B	1	Total	C	H	O	0	0
			45	13	26	6		

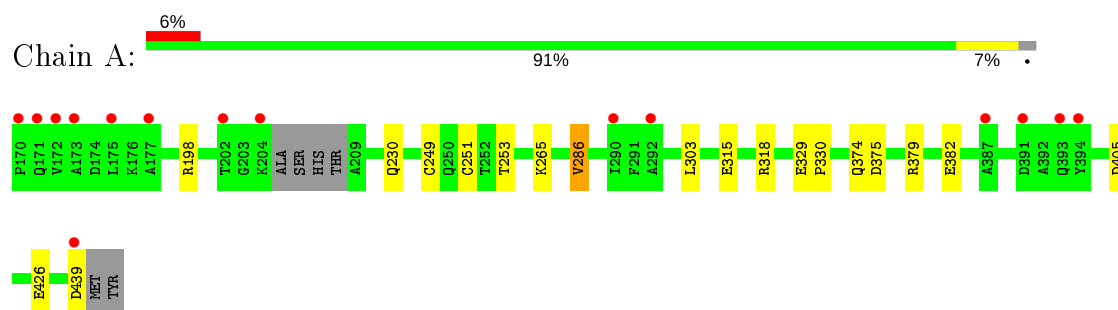
- Molecule 6 is water.

Mol	Chain	Residues	Atoms		ZeroOcc	AltConf
6	A	163	Total	O	0	0
			163	163		
6	B	106	Total	O	0	0
			106	106		

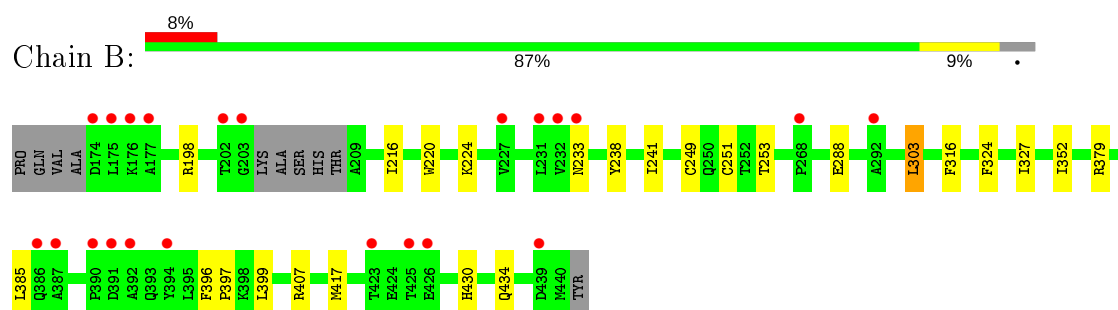
### 3 Residue-property plots [i](#)

These plots are drawn for all protein, RNA, DNA and oligosaccharide chains in the entry. The first graphic for a chain summarises the proportions of the various outlier classes displayed in the second graphic. The second graphic shows the sequence view annotated by issues in geometry and electron density. Residues are color-coded according to the number of geometric quality criteria for which they contain at least one outlier: green = 0, yellow = 1, orange = 2 and red = 3 or more. A red dot above a residue indicates a poor fit to the electron density ( $RSRZ > 2$ ). Stretches of 2 or more consecutive residues without any outlier are shown as a green connector. Residues present in the sample, but not in the model, are shown in grey.

- Molecule 1: Peroxisome proliferator-activated receptor delta



- Molecule 1: Peroxisome proliferator-activated receptor delta



## 4 Data and refinement statistics

Property	Value	Source
Space group	P 1 21 1	Depositor
Cell constants a, b, c, $\alpha$ , $\beta$ , $\gamma$	39.64Å 95.01Å 96.32Å 90.00° 97.60° 90.00°	Depositor
Resolution (Å)	35.41 – 1.90 35.41 – 1.80	Depositor EDS
% Data completeness (in resolution range)	97.0 (35.41-1.90) 93.9 (35.41-1.80)	Depositor EDS
$R_{merge}$	(Not available)	Depositor
$R_{sym}$	(Not available)	Depositor
$\langle I/\sigma(I) \rangle$ <sup>1</sup>	3.10 (at 1.81Å)	Xtriage
Refinement program	PHENIX (1.10.1 _2155: ???)	Depositor
R, $R_{free}$	0.186 , 0.238 0.188 , 0.241	Depositor DCC
$R_{free}$ test set	1846 reflections (3.00%)	wwPDB-VP
Wilson B-factor (Å <sup>2</sup> )	23.9	Xtriage
Anisotropy	0.510	Xtriage
Bulk solvent $k_{sol}$ (e/Å <sup>3</sup> ), $B_{sol}$ (Å <sup>2</sup> )	0.42 , 56.1	EDS
L-test for twinning <sup>2</sup>	$\langle  L  \rangle = 0.49$ , $\langle L^2 \rangle = 0.32$	Xtriage
Estimated twinning fraction	No twinning to report.	Xtriage
$F_o, F_c$ correlation	0.96	EDS
Total number of atoms	9398	wwPDB-VP
Average B, all atoms (Å <sup>2</sup> )	42.0	wwPDB-VP

Xtriage's analysis on translational NCS is as follows: *The largest off-origin peak in the Patterson function is 10.21% of the height of the origin peak. No significant pseudotranslation is detected.*

<sup>1</sup>Intensities estimated from amplitudes.

<sup>2</sup>Theoretical values of  $\langle |L| \rangle$ ,  $\langle L^2 \rangle$  for acentric reflections are 0.5, 0.333 respectively for untwinned datasets, and 0.375, 0.2 for perfectly twinned datasets.

## 5 Model quality

### 5.1 Standard geometry

Bond lengths and bond angles in the following residue types are not validated in this section: PGO, 7SS, PEG, B7G

The Z score for a bond length (or angle) is the number of standard deviations the observed value is removed from the expected value. A bond length (or angle) with  $|Z| > 5$  is considered an outlier worth inspection. RMSZ is the root-mean-square of all Z scores of the bond lengths (or angles).

Mol	Chain	Bond lengths		Bond angles	
		RMSZ	$\# Z  > 5$	RMSZ	$\# Z  > 5$
1	A	0.59	0/2316	0.74	4/3131 (0.1%)
1	B	0.54	1/2202 (0.0%)	0.65	3/2973 (0.1%)
All	All	0.57	1/4518 (0.0%)	0.70	7/6104 (0.1%)

All (1) bond length outliers are listed below:

Mol	Chain	Res	Type	Atoms	Z	Observed(Å)	Ideal(Å)
1	B	251	CYS	CB-SG	-5.99	1.72	1.82

All (7) bond angle outliers are listed below:

Mol	Chain	Res	Type	Atoms	Z	Observed(°)	Ideal(°)
1	A	198	ARG	NE-CZ-NH2	-9.08	115.76	120.30
1	A	286	VAL	CG1-CB-CG2	9.05	125.39	110.90
1	A	198	ARG	NE-CZ-NH1	7.72	124.16	120.30
1	B	379	ARG	NE-CZ-NH2	-5.87	117.37	120.30
1	A	405	ASP	CB-CG-OD1	5.50	123.25	118.30
1	B	379	ARG	NE-CZ-NH1	5.40	123.00	120.30
1	B	303	LEU	CA-CB-CG	5.06	126.94	115.30

There are no chirality outliers.

There are no planarity outliers.

### 5.2 Too-close contacts

In the following table, the Non-H and H(model) columns list the number of non-hydrogen atoms and hydrogen atoms in the chain respectively. The H(added) column lists the number of hydrogen atoms added and optimized by MolProbity. The Clashes column lists the number of clashes within the asymmetric unit, whereas Symm-Clashes lists symmetry related clashes.



Mol	Chain	Non-H	H(model)	H(added)	Clashes	Symm-Clashes
1	A	2195	2254	2171	8	2
1	B	2118	2171	2127	12	2
2	A	36	32	0	0	0
2	B	36	32	0	0	0
3	A	10	16	16	0	0
3	B	10	16	16	0	0
4	A	21	30	30	0	0
4	B	7	10	10	0	0
5	A	38	52	52	1	0
5	B	19	26	26	0	0
6	A	163	0	0	1	0
6	B	106	0	0	0	0
All	All	4759	4639	4448	20	2

The all-atom clashscore is defined as the number of clashes found per 1000 atoms (including hydrogen atoms). The all-atom clashscore for this structure is 2.

All (20) close contacts within the same asymmetric unit are listed below, sorted by their clash magnitude.

Atom-1	Atom-2	Interatomic distance (Å)	Clash overlap (Å)
1:A:249:CYS:O	1:A:253:THR:HG23	2.00	0.62
1:B:249:CYS:O	1:B:253:THR:HG23	2.07	0.54
1:A:251:CYS:SG	5:A:505:B7G:H82	2.50	0.52
1:A:375:ASP:O	1:A:379:ARG:HG3	2.10	0.51
1:A:265:LYS:NZ	6:A:604:HOH:O	2.43	0.51
1:B:216:ILE:HG12	1:B:241:ILE:HD12	1.95	0.49
1:B:220:TRP:CZ2	1:B:224:LYS:HD2	2.48	0.48
1:B:216:ILE:HG12	1:B:241:ILE:CD1	2.44	0.46
1:B:396:PHE:HB3	1:B:397:PRO:HD3	1.98	0.45
1:B:288:GLU:OE2	1:B:407:ARG:HG2	2.17	0.44
1:B:385:LEU:HD11	1:B:399:LEU:HD12	2.00	0.44
1:A:230:GLN:HG2	1:A:251:CYS:SG	2.57	0.44
1:B:233:ASN:N	1:B:233:ASN:OD1	2.50	0.43
1:B:324:PHE:O	1:B:327:ILE:HG22	2.20	0.42
1:B:327:ILE:HD11	1:B:417:MET:SD	2.59	0.42
1:A:329:GLU:N	1:A:330:PRO:CD	2.82	0.42
1:B:241:ILE:HD11	1:B:316:PHE:HZ	1.85	0.41
1:B:430:HIS:O	1:B:434:GLN:HG3	2.20	0.41
1:A:315[A]:GLU:OE2	1:A:318[A]:ARG:NH1	2.54	0.41

All (2) symmetry-related close contacts are listed below. The label for Atom-2 includes the symmetry operator and encoded unit-cell translations to be applied.

Atom-1	Atom-2	Interatomic distance (Å)	Clash overlap (Å)
1:A:382:GLU:OE1	1:B:238:TYR:HH[2_547]	1.51	0.09
1:A:382:GLU:OE1	1:B:238:TYR:OH[2_547]	2.16	0.04

## 5.3 Torsion angles [i](#)

### 5.3.1 Protein backbone [i](#)

In the following table, the Percentiles column shows the percent Ramachandran outliers of the chain as a percentile score with respect to all X-ray entries followed by that with respect to entries of similar resolution.

The Analysed column shows the number of residues for which the backbone conformation was analysed, and the total number of residues.

Mol	Chain	Analysed	Favoured	Allowed	Outliers	Percentiles	
1	A	277/272 (102%)	274 (99%)	3 (1%)	0	100	100
1	B	263/272 (97%)	255 (97%)	8 (3%)	0	100	100
All	All	540/544 (99%)	529 (98%)	11 (2%)	0	100	100

There are no Ramachandran outliers to report.

### 5.3.2 Protein sidechains [i](#)

In the following table, the Percentiles column shows the percent sidechain outliers of the chain as a percentile score with respect to all X-ray entries followed by that with respect to entries of similar resolution.

The Analysed column shows the number of residues for which the sidechain conformation was analysed, and the total number of residues.

Mol	Chain	Analysed	Rotameric	Outliers	Percentiles	
1	A	248/240 (103%)	244 (98%)	4 (2%)	62	60
1	B	237/240 (99%)	234 (99%)	3 (1%)	69	68
All	All	485/480 (101%)	478 (99%)	7 (1%)	65	65

All (7) residues with a non-rotameric sidechain are listed below:

Mol	Chain	Res	Type
1	A	286	VAL
1	A	303	LEU

*Continued on next page...*

*Continued from previous page...*

Mol	Chain	Res	Type
1	A	426	GLU
1	A	439	ASP
1	B	198	ARG
1	B	303	LEU
1	B	352	ILE

Some sidechains can be flipped to improve hydrogen bonding and reduce clashes. There are no such sidechains identified.

### 5.3.3 RNA [i](#)

There are no RNA molecules in this entry.

## 5.4 Non-standard residues in protein, DNA, RNA chains [i](#)

There are no non-standard protein/DNA/RNA residues in this entry.

## 5.5 Carbohydrates [i](#)

There are no monosaccharides in this entry.

## 5.6 Ligand geometry [i](#)

13 ligands are modelled in this entry.

In the following table, the Counts columns list the number of bonds (or angles) for which Mogul statistics could be retrieved, the number of bonds (or angles) that are observed in the model and the number of bonds (or angles) that are defined in the Chemical Component Dictionary. The Link column lists molecule types, if any, to which the group is linked. The Z score for a bond length (or angle) is the number of standard deviations the observed value is removed from the expected value. A bond length (or angle) with  $|Z| > 2$  is considered an outlier worth inspection. RMSZ is the root-mean-square of all Z scores of the bond lengths (or angles).

Mol	Type	Chain	Res	Link	Bond lengths			Bond angles		
					Counts	RMSZ	$\# Z  > 2$	Counts	RMSZ	$\# Z  > 2$
5	B7G	A	506	-	19,19,19	0.87	1 (5%)	24,24,24	1.30	2 (8%)
3	PGO	B	505	-	3,4,4	0.24	0	1,4,4	0.00	0
2	7SS	A	501	-	36,39,39	0.86	2 (5%)	46,52,52	1.30	6 (13%)
4	PEG	A	503[B]	-	6,6,6	0.61	0	5,5,5	0.29	0
3	PGO	A	502[B]	-	3,4,4	0.27	0	1,4,4	0.66	0

Mol	Type	Chain	Res	Link	Bond lengths			Bond angles		
					Counts	RMSZ	# Z  > 2	Counts	RMSZ	# Z  > 2
4	PEG	B	504	-	6,6,6	0.58	0	5,5,5	0.47	0
5	B7G	B	501	-	19,19,19	0.93	0	24,24,24	1.38	4 (16%)
3	PGO	B	503	-	3,4,4	0.27	0	1,4,4	0.01	0
3	PGO	A	502[A]	-	3,4,4	0.27	0	1,4,4	0.57	0
5	B7G	A	505	-	19,19,19	0.98	1 (5%)	24,24,24	1.22	1 (4%)
2	7SS	B	502	-	36,39,39	0.78	2 (5%)	46,52,52	1.33	5 (10%)
4	PEG	A	503[A]	-	6,6,6	0.54	0	5,5,5	0.49	0
4	PEG	A	504	-	6,6,6	0.51	0	5,5,5	0.25	0

In the following table, the Chirals column lists the number of chiral outliers, the number of chiral centers analysed, the number of these observed in the model and the number defined in the Chemical Component Dictionary. Similar counts are reported in the Torsion and Rings columns. '-' means no outliers of that kind were identified.

Mol	Type	Chain	Res	Link	Chirals	Torsions	Rings
5	B7G	A	506	-	-	3/10/30/30	0/1/1/1
3	PGO	B	505	-	-	1/2/2/2	-
2	7SS	A	501	-	-	5/29/33/33	0/4/4/4
4	PEG	A	503[B]	-	-	2/4/4/4	-
3	PGO	A	502[B]	-	-	2/2/2/2	-
4	PEG	B	504	-	-	2/4/4/4	-
5	B7G	B	501	-	-	2/10/30/30	0/1/1/1
3	PGO	B	503	-	-	2/2/2/2	-
3	PGO	A	502[A]	-	-	2/2/2/2	-
5	B7G	A	505	-	-	9/10/30/30	0/1/1/1
2	7SS	B	502	-	-	5/29/33/33	0/4/4/4
4	PEG	A	503[A]	-	-	1/4/4/4	-
4	PEG	A	504	-	-	2/4/4/4	-

All (6) bond length outliers are listed below:

Mol	Chain	Res	Type	Atoms	Z	Observed(Å)	Ideal(Å)
5	A	505	B7G	O5-C1	2.30	1.47	1.41
2	A	501	7SS	C14-N	-2.26	1.29	1.34
2	A	501	7SS	C23-C13	2.22	1.53	1.48
2	B	502	7SS	C16-C20	2.15	1.42	1.38
5	A	506	B7G	O5-C1	2.07	1.47	1.41
2	B	502	7SS	C14-N	-2.01	1.30	1.34

All (18) bond angle outliers are listed below:

Mol	Chain	Res	Type	Atoms	Z	Observed(°)	Ideal(°)
5	A	505	B7G	C7-O1-C1	4.33	121.03	113.84
5	A	506	B7G	O1-C1-C2	3.83	114.28	108.30
5	B	501	B7G	O1-C1-C2	3.65	114.00	108.30
2	A	501	7SS	C6-N-C14	3.51	126.72	116.97
2	B	502	7SS	C6-N-C14	3.48	126.65	116.97
2	B	502	7SS	O3-C14-C15	-3.25	113.90	120.23
2	A	501	7SS	C13-N-C14	-3.16	113.66	123.21
2	A	501	7SS	C15-C14-N	3.01	124.74	118.77
2	B	502	7SS	C15-C14-N	2.97	124.66	118.77
2	B	502	7SS	C13-N-C14	-2.95	114.32	123.21
5	B	501	B7G	C6-C5-C4	-2.78	106.50	113.00
2	A	501	7SS	O3-C14-C15	-2.54	115.28	120.23
5	A	506	B7G	O5-C5-C4	2.24	113.77	109.69
2	B	502	7SS	C4-C5-C	2.21	121.29	118.37
5	B	501	B7G	O2-C2-C1	-2.09	104.96	110.05
2	A	501	7SS	C16-C15-C14	-2.06	115.06	120.29
5	B	501	B7G	O5-C5-C4	2.02	113.36	109.69
2	A	501	7SS	C16-C20-C19	-2.02	118.23	121.13

There are no chirality outliers.

All (38) torsion outliers are listed below:

Mol	Chain	Res	Type	Atoms
2	A	501	7SS	C22-C13-N-C6
2	A	501	7SS	C22-C13-N-C14
2	A	501	7SS	C23-C13-N-C14
3	A	502[B]	PGO	O1-C1-C2-C3
3	A	502[B]	PGO	O1-C1-C2-O2
3	A	502[A]	PGO	O1-C1-C2-C3
3	A	502[A]	PGO	O1-C1-C2-O2
5	A	505	B7G	O5-C1-O1-C7
5	A	505	B7G	C2-C1-O1-C7
2	B	502	7SS	C22-C13-N-C6
2	B	502	7SS	C22-C13-N-C14
2	B	502	7SS	C23-C13-N-C14
5	A	505	B7G	C4-C5-C6-O6
5	A	505	B7G	O5-C5-C6-O6
5	A	506	B7G	O1-C7-C8-C9
4	A	503[B]	PEG	O1-C1-C2-O2
5	B	501	B7G	C9-C10-C11-C12
4	A	503[B]	PEG	O2-C3-C4-O4

*Continued on next page...*

*Continued from previous page...*

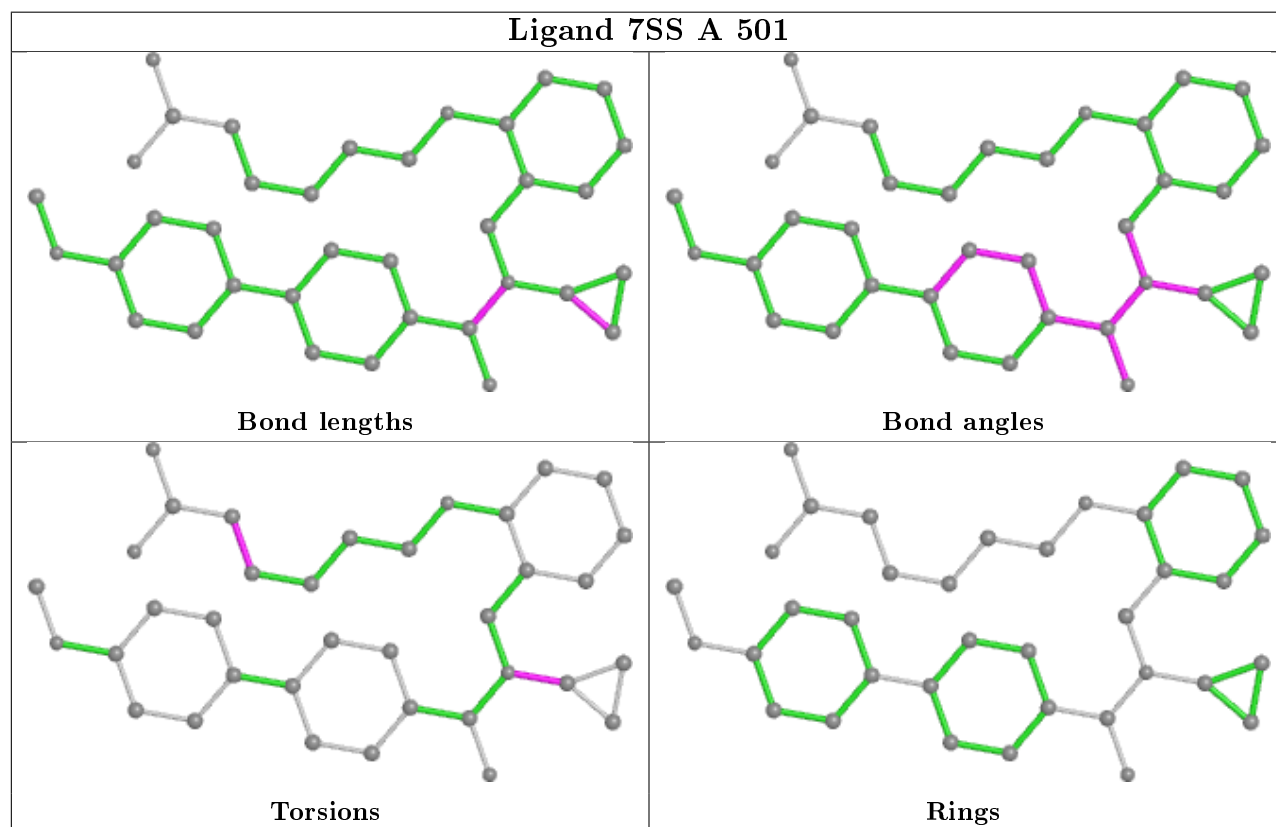
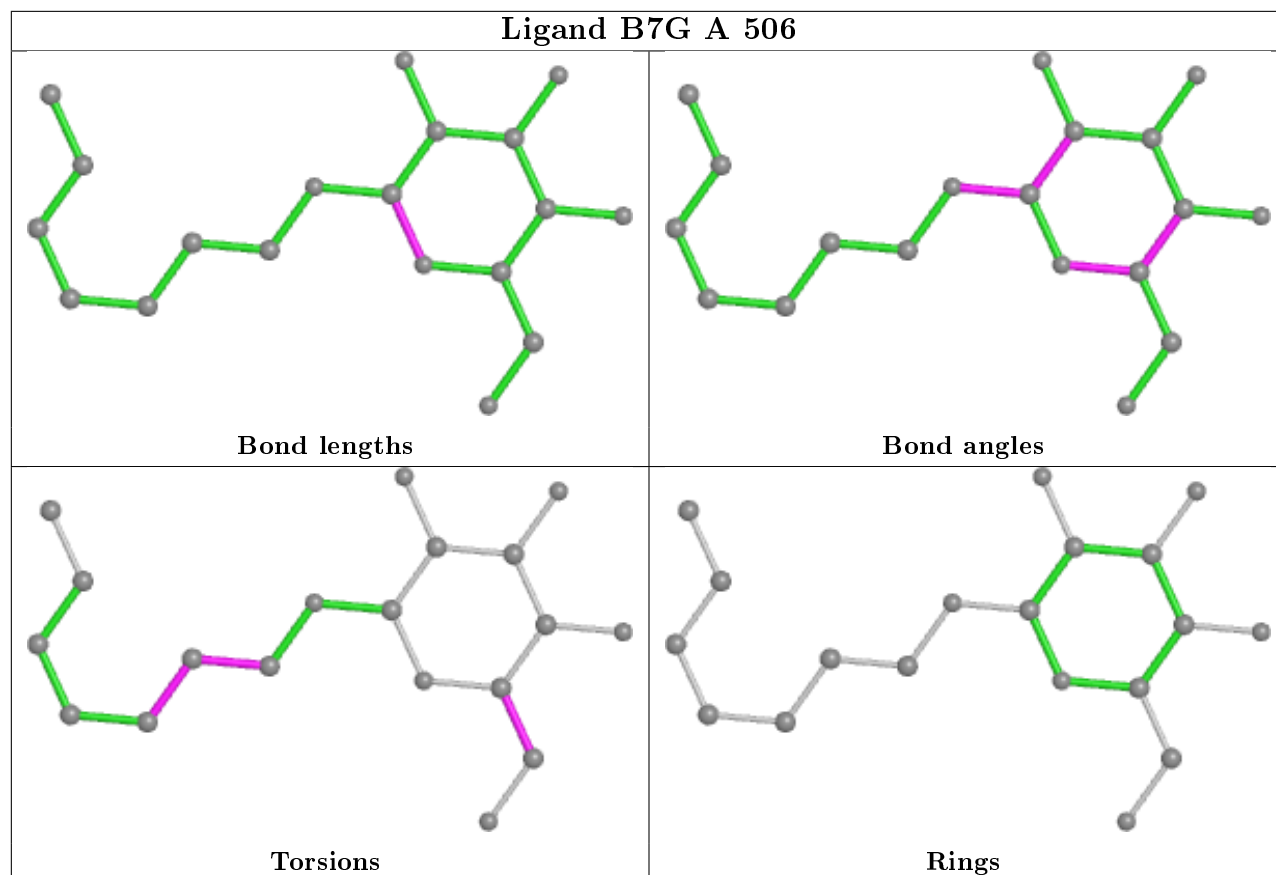
Mol	Chain	Res	Type	Atoms
4	A	503[A]	PEG	O1-C1-C2-O2
5	A	506	B7G	C7-C8-C9-C10
5	A	505	B7G	C7-C8-C9-C10
5	A	505	B7G	C11-C10-C9-C8
5	A	505	B7G	O1-C7-C8-C9
4	A	504	PEG	O1-C1-C2-O2
5	A	505	B7G	C10-C11-C12-C13
5	A	506	B7G	C4-C5-C6-O6
3	B	503	PGO	O1-C1-C2-O2
4	B	504	PEG	C1-C2-O2-C3
3	B	503	PGO	O1-C1-C2-C3
4	A	504	PEG	C1-C2-O2-C3
5	B	501	B7G	C7-C8-C9-C10
2	A	501	7SS	C23-C13-N-C6
5	A	505	B7G	C8-C7-O1-C1
2	B	502	7SS	C7-C8-C9-C10
2	A	501	7SS	C9-C10-C11-C12
2	B	502	7SS	C9-C10-C11-C12
3	B	505	PGO	O1-C1-C2-O2
4	B	504	PEG	O1-C1-C2-O2

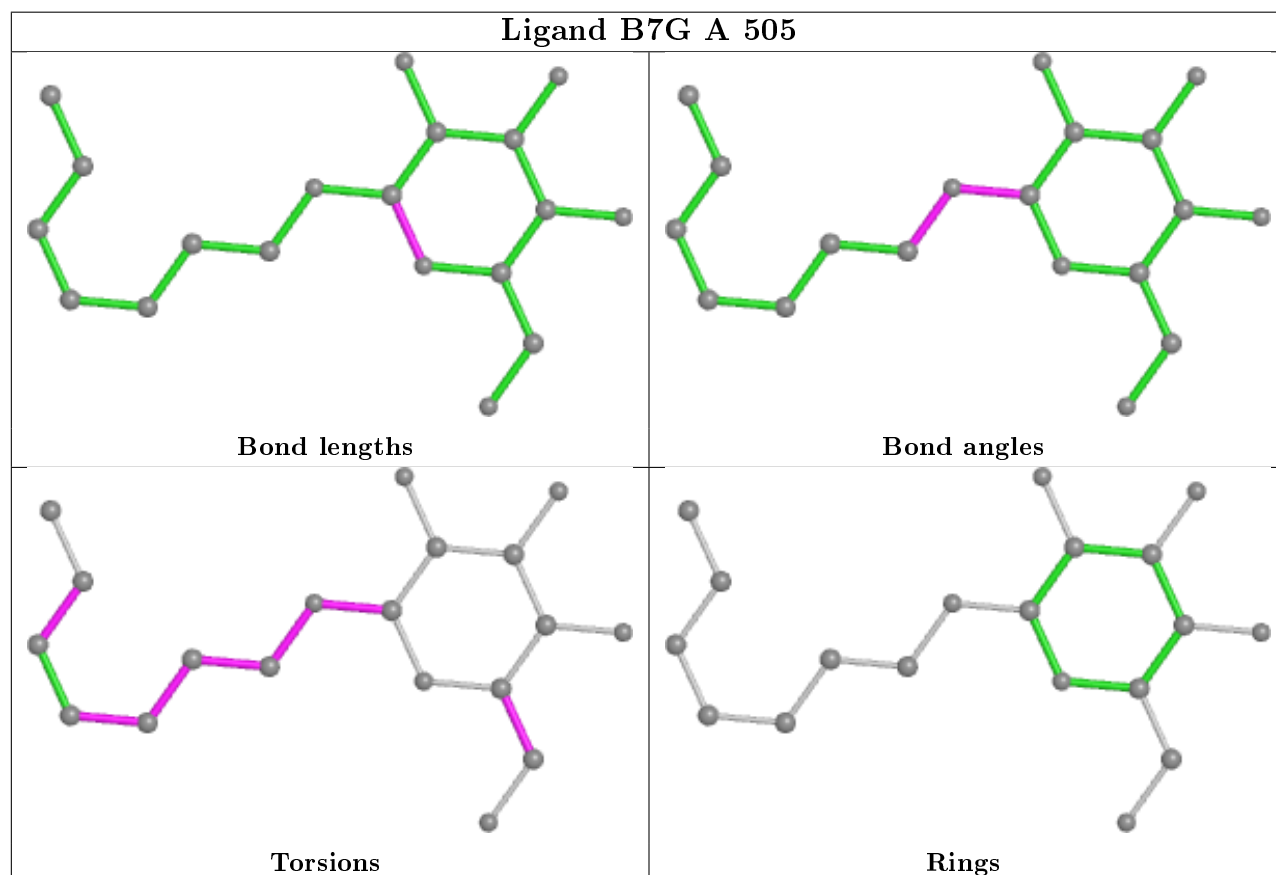
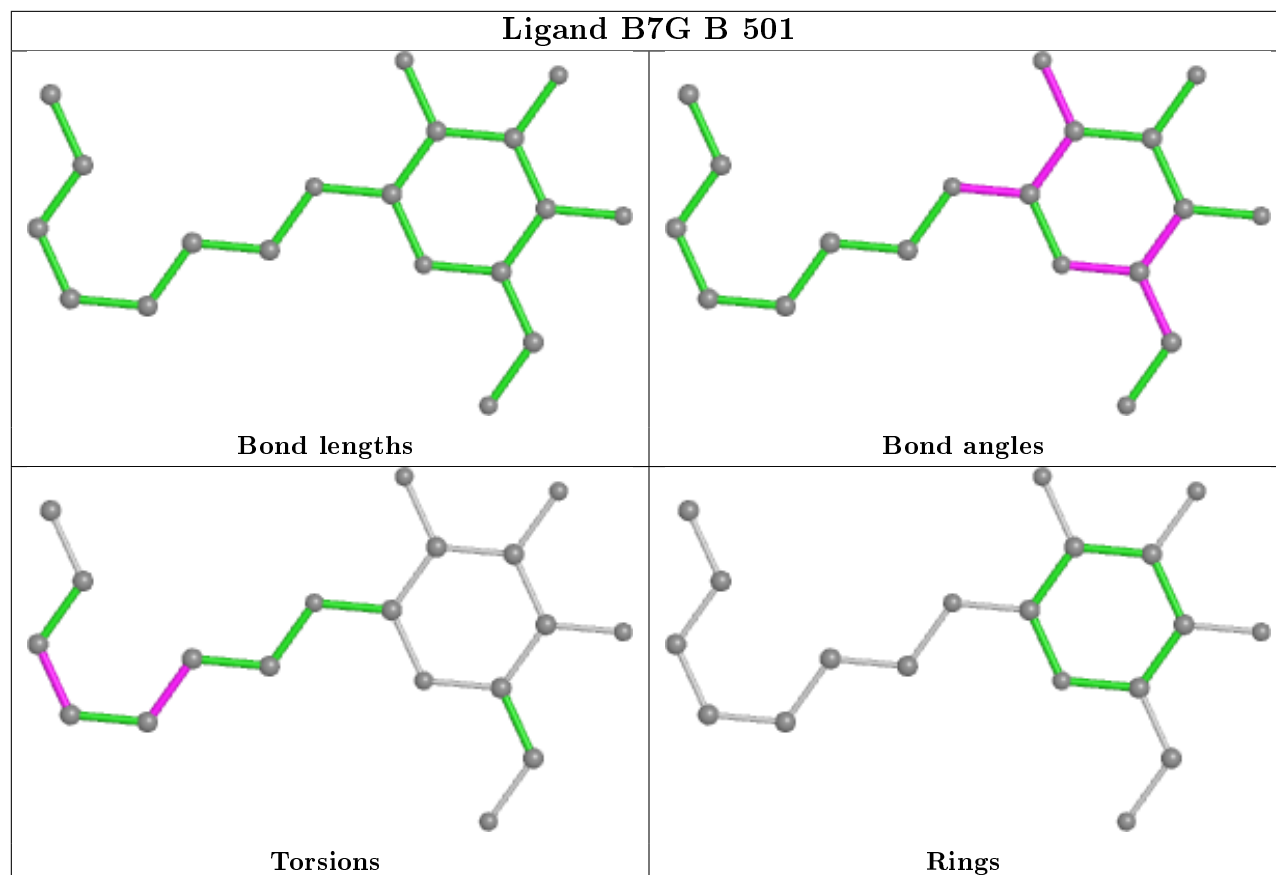
There are no ring outliers.

1 monomer is involved in 1 short contact:

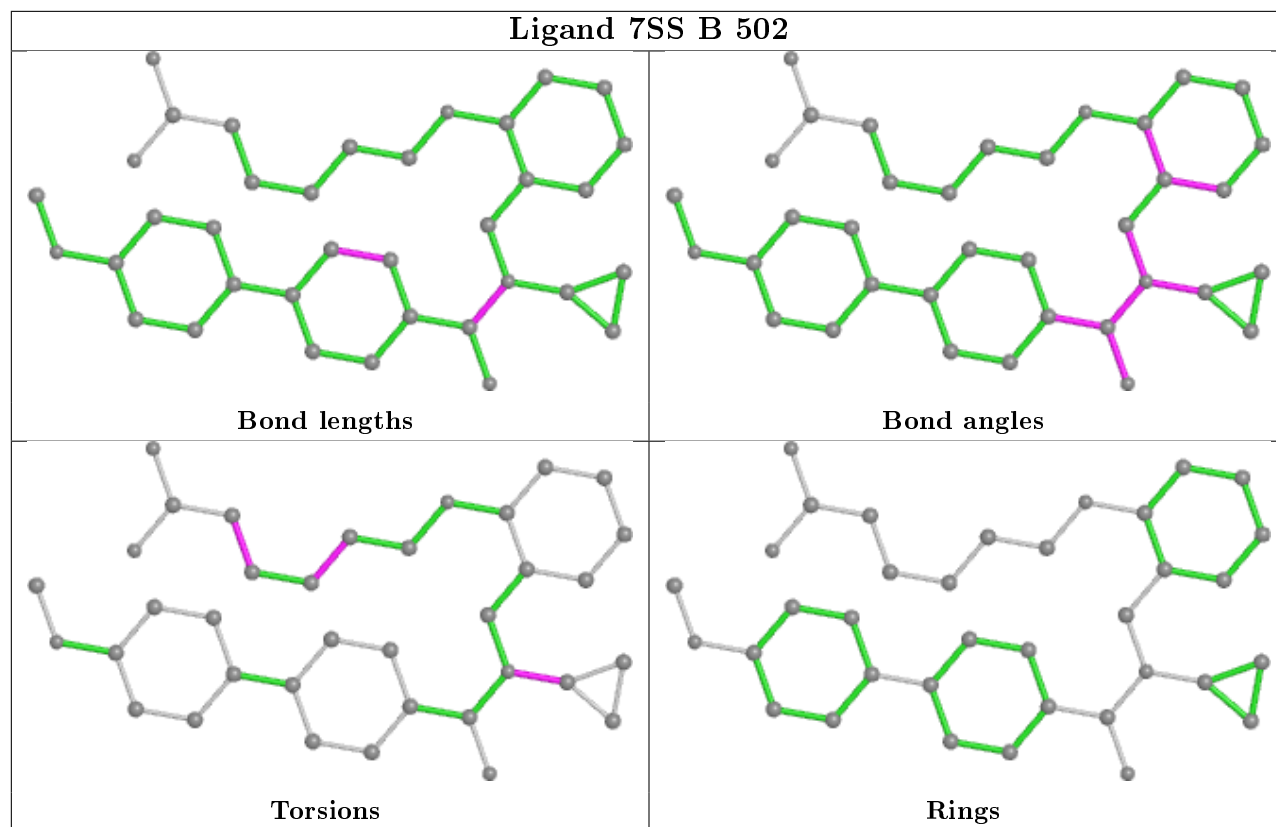
Mol	Chain	Res	Type	Clashes	Symm-Clashes
5	A	505	B7G	1	0

The following is a two-dimensional graphical depiction of Mogul quality analysis of bond lengths, bond angles, torsion angles, and ring geometry for all instances of the Ligand of Interest. In addition, ligands with molecular weight > 250 and outliers as shown on the validation Tables will also be included. For torsion angles, if less than 5% of the Mogul distribution of torsion angles is within 10 degrees of the torsion angle in question, then that torsion angle is considered an outlier. Any bond that is central to one or more torsion angles identified as an outlier by Mogul will be highlighted in the graph. For rings, the root-mean-square deviation (RMSD) between the ring in question and similar rings identified by Mogul is calculated over all ring torsion angles. If the average RMSD is greater than 60 degrees and the minimal RMSD between the ring in question and any Mogul-identified rings is also greater than 60 degrees, then that ring is considered an outlier. The outliers are highlighted in purple. The color gray indicates Mogul did not find sufficient equivalents in the CSD to analyse the geometry.









## 5.7 Other polymers [i](#)

There are no such residues in this entry.

## 5.8 Polymer linkage issues [i](#)

There are no chain breaks in this entry.

## 6 Fit of model and data ⓘ

### 6.1 Protein, DNA and RNA chains ⓘ

In the following table, the column labelled ‘#RSRZ> 2’ contains the number (and percentage) of RSRZ outliers, followed by percent RSRZ outliers for the chain as percentile scores relative to all X-ray entries and entries of similar resolution. The OWAB column contains the minimum, median, 95<sup>th</sup> percentile and maximum values of the occupancy-weighted average B-factor per residue. The column labelled ‘Q< 0.9’ lists the number of (and percentage) of residues with an average occupancy less than 0.9.

Mol	Chain	Analysed	<RSRZ>	#RSRZ>2	OWAB(Å <sup>2</sup> )	Q<0.9
1	A	266/272 (97%)	0.21	15 (5%) 24 27	16, 30, 63, 92	0
1	B	262/272 (96%)	0.32	22 (8%) 11 12	16, 34, 69, 126	0
All	All	528/544 (97%)	0.26	37 (7%) 16 18	16, 32, 69, 126	0

All (37) RSRZ outliers are listed below:

Mol	Chain	Res	Type	RSRZ
1	A	172	VAL	6.4
1	A	173	ALA	4.5
1	B	392	ALA	4.2
1	B	391	ASP	3.9
1	B	203	GLY	3.8
1	A	175	LEU	3.6
1	A	204	LYS	3.5
1	B	425	THR	3.2
1	B	227	VAL	3.2
1	B	202	THR	3.1
1	B	174	ASP	3.1
1	A	177	ALA	3.0
1	B	268	PRO	2.9
1	B	439	ASP	2.8
1	B	390	PRO	2.6
1	B	387	ALA	2.6
1	B	233	ASN	2.6
1	A	393	GLN	2.6
1	A	170	PRO	2.6
1	B	423	THR	2.6
1	A	171	GLN	2.6
1	B	176	LYS	2.5
1	A	391	ASP	2.5
1	B	232	VAL	2.5

*Continued on next page...*

*Continued from previous page...*

Mol	Chain	Res	Type	RSRZ
1	B	175	LEU	2.5
1	A	394	TYR	2.4
1	B	386	GLN	2.3
1	A	439	ASP	2.2
1	B	231	LEU	2.2
1	B	394	TYR	2.2
1	A	387	ALA	2.2
1	B	177	ALA	2.2
1	A	292	ALA	2.1
1	A	202	THR	2.1
1	B	426	GLU	2.0
1	A	290	ILE	2.0
1	B	292	ALA	2.0

## 6.2 Non-standard residues in protein, DNA, RNA chains [i](#)

There are no non-standard protein/DNA/RNA residues in this entry.

## 6.3 Carbohydrates [i](#)

There are no monosaccharides in this entry.

## 6.4 Ligands [i](#)

In the following table, the Atoms column lists the number of modelled atoms in the group and the number defined in the chemical component dictionary. The B-factors column lists the minimum, median, 95<sup>th</sup> percentile and maximum values of B factors of atoms in the group. The column labelled 'Q< 0.9' lists the number of atoms with occupancy less than 0.9.

Mol	Type	Chain	Res	Atoms	RSCC	RSR	B-factors( $\text{\AA}^2$ )	Q<0.9
4	PEG	B	504	7/7	0.60	0.33	70,85,113,113	0
5	B7G	A	505	19/19	0.61	0.22	45,71,125,145	0
4	PEG	A	503[B]	7/7	0.67	0.28	41,58,69,69	17
4	PEG	A	503[A]	7/7	0.67	0.28	29,54,70,70	17
5	B7G	A	506	19/19	0.80	0.15	28,44,56,66	0
3	PGO	A	502[A]	5/5	0.81	0.32	32,44,53,53	13
3	PGO	A	502[B]	5/5	0.81	0.32	38,46,51,52	13
3	PGO	B	503	5/5	0.81	0.31	51,67,94,113	0
5	B7G	B	501	19/19	0.83	0.15	29,41,62,63	0
3	PGO	B	505	5/5	0.84	0.16	49,65,73,84	0

*Continued on next page...*

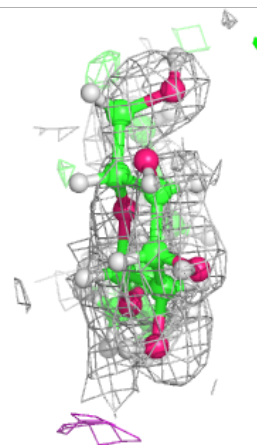
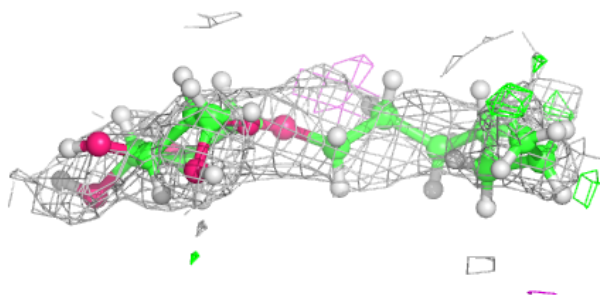
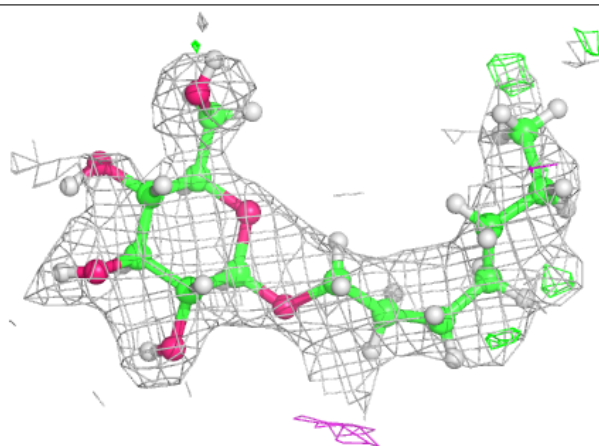
*Continued from previous page...*

Mol	Type	Chain	Res	Atoms	RSCC	RSR	B-factors( $\text{\AA}^2$ )	Q<0.9
4	PEG	A	504	7/7	0.88	0.14	48,62,116,116	0
2	7SS	B	502	36/36	0.92	0.15	18,37,70,84	0
2	7SS	A	501	36/36	0.94	0.11	15,24,38,38	0

The following is a graphical depiction of the model fit to experimental electron density of all instances of the Ligand of Interest. In addition, ligands with molecular weight > 250 and outliers as shown on the geometry validation Tables will also be included. Each fit is shown from different orientation to approximate a three-dimensional view.

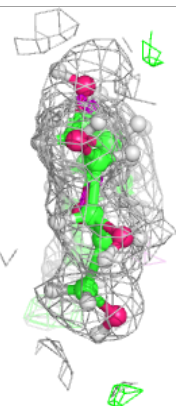
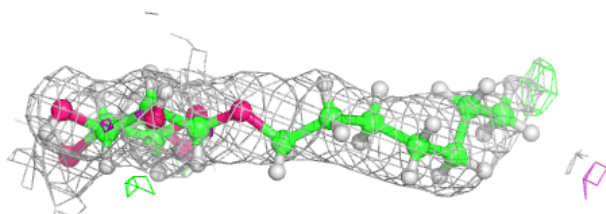
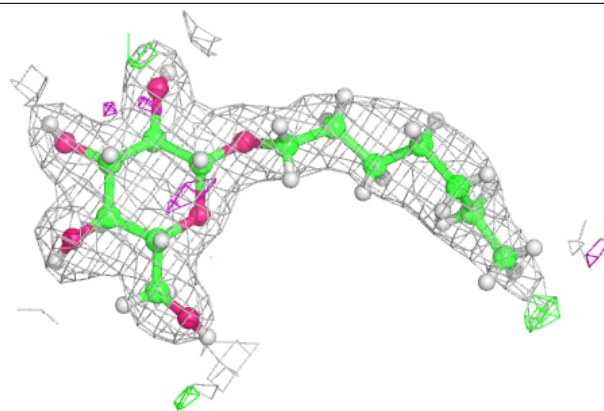
**Electron density around B7G A 505:**

2mF<sub>o</sub>-DF<sub>c</sub> (at 0.7 rmsd) in gray  
mF<sub>o</sub>-DF<sub>c</sub> (at 3 rmsd) in purple (negative)  
and green (positive)

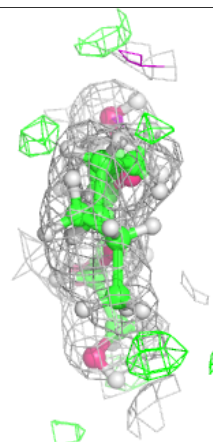
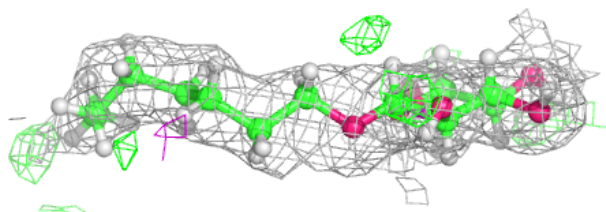
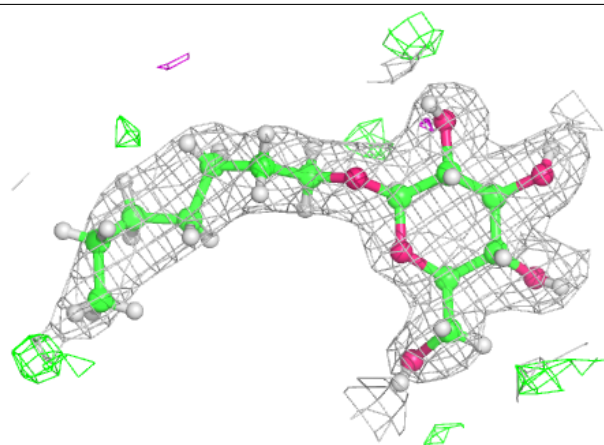


**Electron density around B7G A 506:**

$2mF_o-DF_c$  (at 0.7 rmsd) in gray  
 $mF_o-DF_c$  (at 3 rmsd) in purple (negative)  
and green (positive)

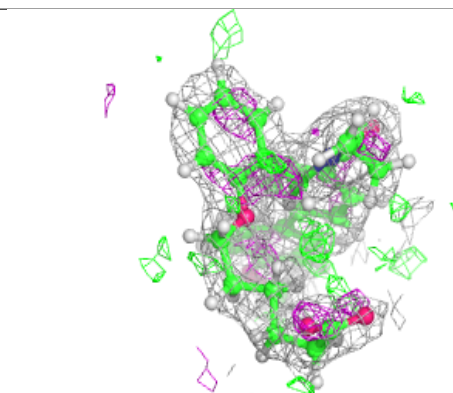
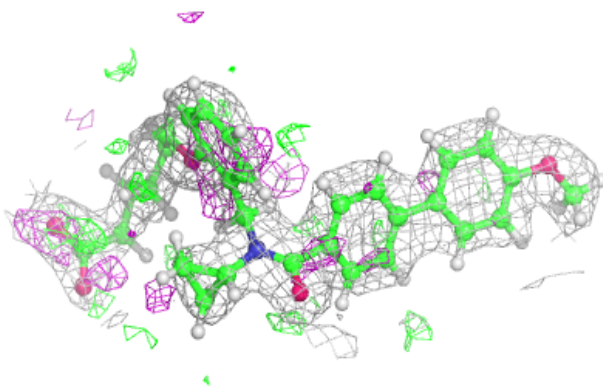
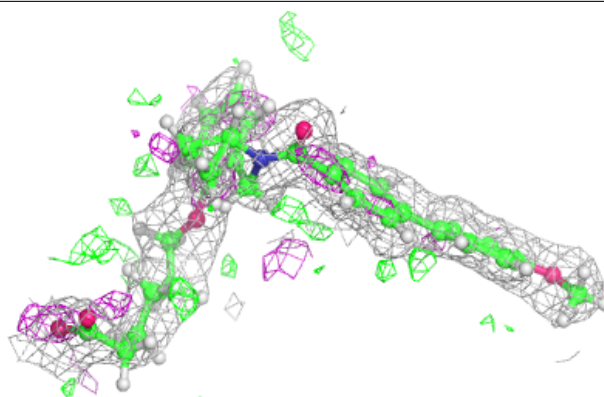
**Electron density around B7G B 501:**

$2mF_o-DF_c$  (at 0.7 rmsd) in gray  
 $mF_o-DF_c$  (at 3 rmsd) in purple (negative)  
and green (positive)

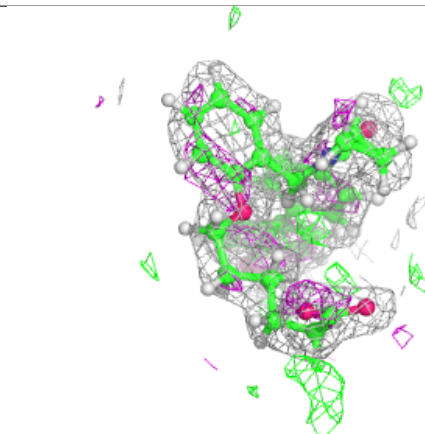
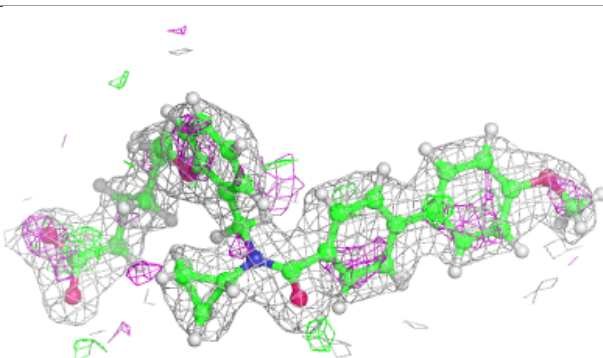
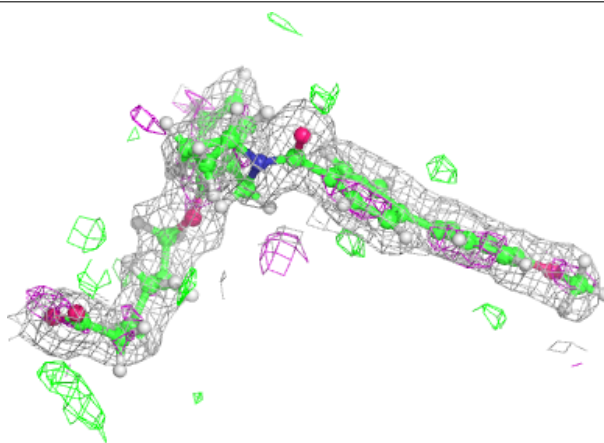


**Electron density around 7SS B 502:**

$2mF_o-DF_c$  (at 0.7 rmsd) in gray  
 $mF_o-DF_c$  (at 3 rmsd) in purple (negative)  
and green (positive)

**Electron density around 7SS A 501:**

$2mF_o-DF_c$  (at 0.7 rmsd) in gray  
 $mF_o-DF_c$  (at 3 rmsd) in purple (negative)  
and green (positive)



## 6.5 Other polymers [i](#)

There are no such residues in this entry.