



# Full wwPDB X-ray Structure Validation Report ⓘ

Aug 10, 2020 – 08:24 AM BST

PDB ID : 4U5I  
Title : Complex structure of mutant CtCel5E (E314A) with xylobiose  
Authors : Guo, R.T.; Huang, C.H.; Wu, T.H.  
Deposited on : 2014-07-25  
Resolution : 2.50 Å(reported)

This is a Full wwPDB X-ray Structure Validation Report for a publicly released PDB entry.

We welcome your comments at [validation@mail.wwpdb.org](mailto:validation@mail.wwpdb.org)

A user guide is available at

<https://www.wwpdb.org/validation/2017/XrayValidationReportHelp>

with specific help available everywhere you see the ⓘ symbol.

---

The following versions of software and data (see [references ⓘ](#)) were used in the production of this report:

MolProbity : 4.02b-467  
Mogul : 1.8.5 (274361), CSD as541be (2020)  
Xtriage (Phenix) : 1.13  
EDS : 2.13.1  
Percentile statistics : 20191225.v01 (using entries in the PDB archive December 25th 2019)  
Refmac : 5.8.0158  
CCP4 : 7.0.044 (Gargrove)  
Ideal geometry (proteins) : Engh & Huber (2001)  
Ideal geometry (DNA, RNA) : Parkinson et al. (1996)  
Validation Pipeline (wwPDB-VP) : 2.13.1

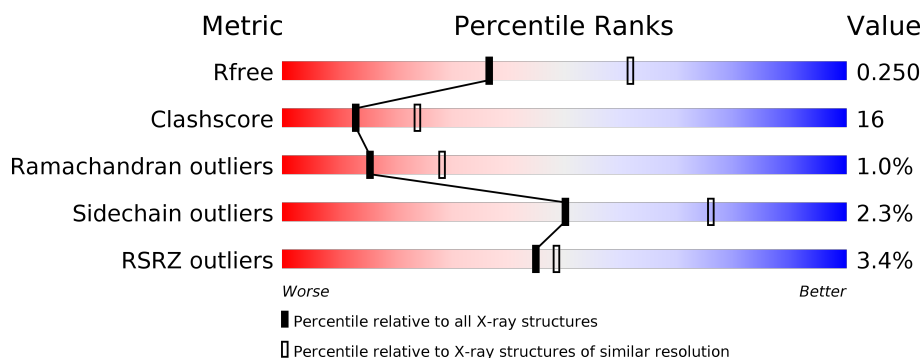
# 1 Overall quality at a glance

The following experimental techniques were used to determine the structure:

## *X-RAY DIFFRACTION*

The reported resolution of this entry is 2.50 Å.

Percentile scores (ranging between 0-100) for global validation metrics of the entry are shown in the following graphic. The table shows the number of entries on which the scores are based.



Metric	Whole archive (#Entries)	Similar resolution (#Entries, resolution range(Å))
$R_{free}$	130704	4661 (2.50-2.50)
Clashscore	141614	5346 (2.50-2.50)
Ramachandran outliers	138981	5231 (2.50-2.50)
Sidechain outliers	138945	5233 (2.50-2.50)
RSRZ outliers	127900	4559 (2.50-2.50)

The table below summarises the geometric issues observed across the polymeric chains and their fit to the electron density. The red, orange, yellow and green segments on the lower bar indicate the fraction of residues that contain outliers for  $\geq 3$ , 2, 1 and 0 types of geometric quality criteria respectively. A grey segment represents the fraction of residues that are not modelled. The numeric value for each fraction is indicated below the corresponding segment, with a dot representing fractions  $\leq 5\%$ . The upper red bar (where present) indicates the fraction of residues that have poor fit to the electron density. The numeric value is given above the bar.

Mol	Chain	Length	Quality of chain
1	A	403	<div> <div>%</div> <div> <div></div> <div>51%</div> <div>21%</div> <div>27%</div> </div> </div>
1	B	403	<div> <div>4%</div> <div> <div></div> <div>48%</div> <div>24%</div> <div>•</div> <div>27%</div> </div> </div>
2	C	2	<div> <div>50%</div> <div>50%</div> </div>
2	D	2	<div> <div>50%</div> <div>50%</div> </div>

The following table lists non-polymeric compounds, carbohydrate monomers and non-standard residues in protein, DNA, RNA chains that are outliers for geometric or electron-density-fit crite-

ria:

Mol	Type	Chain	Res	Chirality	Geometry	Clashes	Electron density
2	XYP	C	2	-	-	-	X
2	XYP	D	2	-	-	-	X

## 2 Entry composition [i](#)

There are 3 unique types of molecules in this entry. The entry contains 5213 atoms, of which 0 are hydrogens and 0 are deuteriums.

In the tables below, the ZeroOcc column contains the number of atoms modelled with zero occupancy, the AltConf column contains the number of residues with at least one atom in alternate conformation and the Trace column contains the number of residues modelled with at most 2 atoms.

- Molecule 1 is a protein called Endoglucanase H.

Mol	Chain	Residues	Atoms					ZeroOcc	AltConf	Trace
1	A	295	Total	C	N	O	S	0	0	0
			2451	1576	407	457	11			
1	B	296	Total	C	N	O	S	0	0	0
			2464	1584	410	459	11			

There are 78 discrepancies between the modelled and reference sequences:

Chain	Residue	Modelled	Actual	Comment	Reference
A	1	MET	-	expression tag	UNP P16218
A	2	GLY	-	expression tag	UNP P16218
A	3	SER	-	expression tag	UNP P16218
A	4	SER	-	expression tag	UNP P16218
A	5	HIS	-	expression tag	UNP P16218
A	6	HIS	-	expression tag	UNP P16218
A	7	HIS	-	expression tag	UNP P16218
A	8	HIS	-	expression tag	UNP P16218
A	9	HIS	-	expression tag	UNP P16218
A	10	HIS	-	expression tag	UNP P16218
A	11	SER	-	expression tag	UNP P16218
A	12	SER	-	expression tag	UNP P16218
A	13	GLY	-	expression tag	UNP P16218
A	14	LEU	-	expression tag	UNP P16218
A	15	VAL	-	expression tag	UNP P16218
A	16	PRO	-	expression tag	UNP P16218
A	17	ARG	-	expression tag	UNP P16218
A	18	GLY	-	expression tag	UNP P16218
A	19	SER	-	expression tag	UNP P16218
A	20	HIS	-	expression tag	UNP P16218
A	21	MET	-	expression tag	UNP P16218
A	22	ALA	-	expression tag	UNP P16218
A	23	SER	-	expression tag	UNP P16218
A	24	MET	-	expression tag	UNP P16218
A	25	THR	-	expression tag	UNP P16218

*Continued on next page...*

*Continued from previous page...*

Chain	Residue	Modelled	Actual	Comment	Reference
A	26	GLY	-	expression tag	UNP P16218
A	27	GLY	-	expression tag	UNP P16218
A	28	GLN	-	expression tag	UNP P16218
A	29	GLN	-	expression tag	UNP P16218
A	30	MET	-	expression tag	UNP P16218
A	31	GLY	-	expression tag	UNP P16218
A	32	ARG	-	expression tag	UNP P16218
A	33	ILE	-	expression tag	UNP P16218
A	34	GLU	-	expression tag	UNP P16218
A	35	GLY	-	expression tag	UNP P16218
A	36	ARG	-	expression tag	UNP P16218
A	37	GLU	-	expression tag	UNP P16218
A	38	PHE	-	expression tag	UNP P16218
A	314	ALA	GLU	engineered mutation	UNP P16218
B	1	MET	-	expression tag	UNP P16218
B	2	GLY	-	expression tag	UNP P16218
B	3	SER	-	expression tag	UNP P16218
B	4	SER	-	expression tag	UNP P16218
B	5	HIS	-	expression tag	UNP P16218
B	6	HIS	-	expression tag	UNP P16218
B	7	HIS	-	expression tag	UNP P16218
B	8	HIS	-	expression tag	UNP P16218
B	9	HIS	-	expression tag	UNP P16218
B	10	HIS	-	expression tag	UNP P16218
B	11	SER	-	expression tag	UNP P16218
B	12	SER	-	expression tag	UNP P16218
B	13	GLY	-	expression tag	UNP P16218
B	14	LEU	-	expression tag	UNP P16218
B	15	VAL	-	expression tag	UNP P16218
B	16	PRO	-	expression tag	UNP P16218
B	17	ARG	-	expression tag	UNP P16218
B	18	GLY	-	expression tag	UNP P16218
B	19	SER	-	expression tag	UNP P16218
B	20	HIS	-	expression tag	UNP P16218
B	21	MET	-	expression tag	UNP P16218
B	22	ALA	-	expression tag	UNP P16218
B	23	SER	-	expression tag	UNP P16218
B	24	MET	-	expression tag	UNP P16218
B	25	THR	-	expression tag	UNP P16218
B	26	GLY	-	expression tag	UNP P16218
B	27	GLY	-	expression tag	UNP P16218
B	28	GLN	-	expression tag	UNP P16218

*Continued on next page...*

Continued from previous page...

Chain	Residue	Modelled	Actual	Comment	Reference
B	29	GLN	-	expression tag	UNP P16218
B	30	MET	-	expression tag	UNP P16218
B	31	GLY	-	expression tag	UNP P16218
B	32	ARG	-	expression tag	UNP P16218
B	33	ILE	-	expression tag	UNP P16218
B	34	GLU	-	expression tag	UNP P16218
B	35	GLY	-	expression tag	UNP P16218
B	36	ARG	-	expression tag	UNP P16218
B	37	GLU	-	expression tag	UNP P16218
B	38	PHE	-	expression tag	UNP P16218
B	314	ALA	GLU	engineered mutation	UNP P16218

- Molecule 2 is an oligosaccharide called beta-D-xylopyranose-(1-4)-beta-D-xylopyranose.



Mol	Chain	Residues	Atoms			ZeroOcc	AltConf	Trace
2	C	2	Total	C	O	0	0	0
			19	10	9			
2	D	2	Total	C	O	0	0	0
			19	10	9			

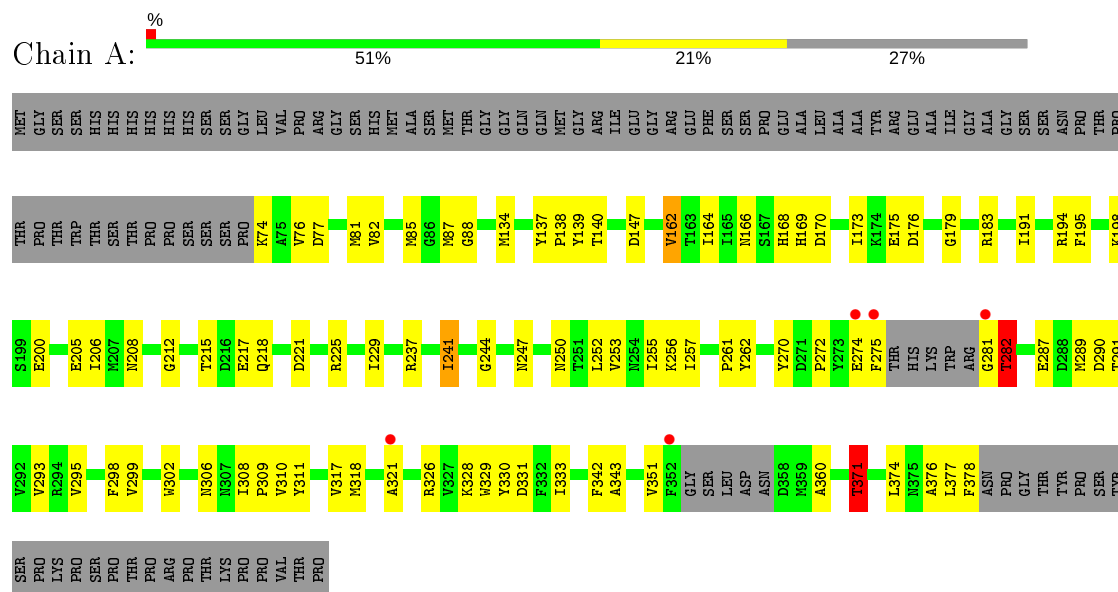
- Molecule 3 is water.

Mol	Chain	Residues	Atoms		ZeroOcc	AltConf
3	A	154	Total	O	0	0
			154	154		
3	B	106	Total	O	0	0
			106	106		

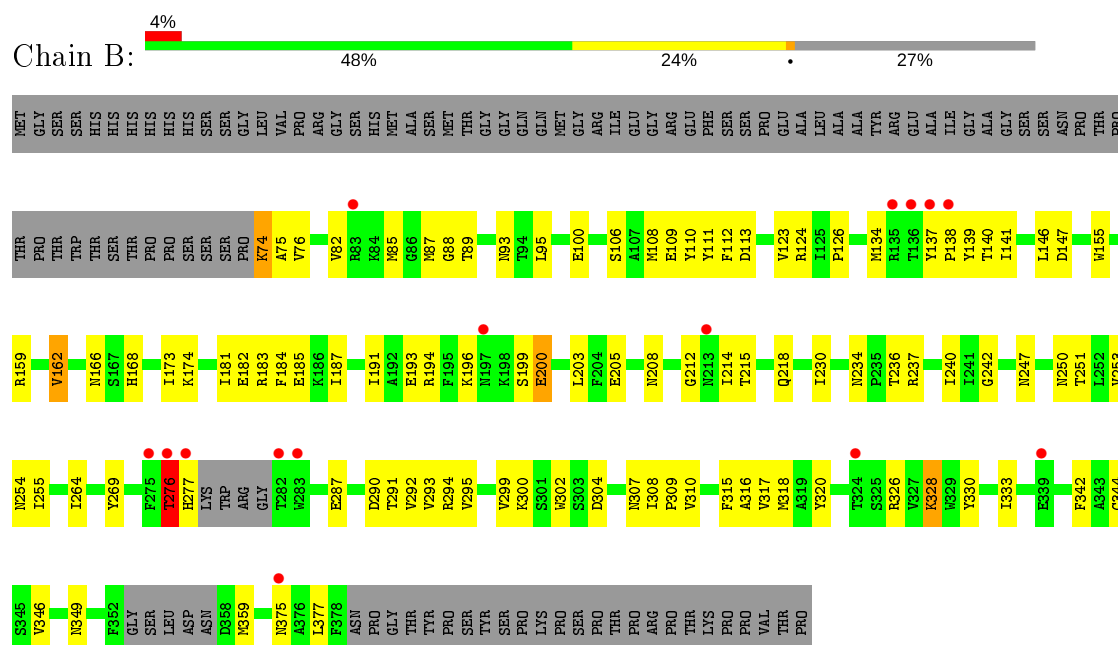
### 3 Residue-property plots

These plots are drawn for all protein, RNA, DNA and oligosaccharide chains in the entry. The first graphic for a chain summarises the proportions of the various outlier classes displayed in the second graphic. The second graphic shows the sequence view annotated by issues in geometry and electron density. Residues are color-coded according to the number of geometric quality criteria for which they contain at least one outlier: green = 0, yellow = 1, orange = 2 and red = 3 or more. A red dot above a residue indicates a poor fit to the electron density ( $RSRZ > 2$ ). Stretches of 2 or more consecutive residues without any outlier are shown as a green connector. Residues present in the sample, but not in the model, are shown in grey.

#### • Molecule 1: Endoglucanase H



#### • Molecule 1: Endoglucanase H




- Molecule 2: beta-D-xylopyranose-(1-4)-beta-D-xylopyranose

Chain C:  50% 50%

XP1  
XP2

- Molecule 2: beta-D-xylopyranose-(1-4)-beta-D-xylopyranose

Chain D:  50% 50%

XP1  
XP2



## 4 Data and refinement statistics

Property	Value	Source
Space group	P 43 21 2	Depositor
Cell constants a, b, c, $\alpha$ , $\beta$ , $\gamma$	75.02Å 75.02Å 256.18Å 90.00° 90.00° 90.00°	Depositor
Resolution (Å)	25.00 – 2.50 19.91 – 2.50	Depositor EDS
% Data completeness (in resolution range)	92.2 (25.00-2.50) 92.3 (19.91-2.50)	Depositor EDS
$R_{merge}$	(Not available)	Depositor
$R_{sym}$	0.08	Depositor
$\langle I/\sigma(I) \rangle$ <sup>1</sup>	3.71 (at 2.50Å)	Xtriage
Refinement program	CNS 1.21	Depositor
R, $R_{free}$	0.205 , 0.252 0.205 , 0.250	Depositor DCC
$R_{free}$ test set	1167 reflections (4.79%)	wwPDB-VP
Wilson B-factor (Å <sup>2</sup> )	48.2	Xtriage
Anisotropy	0.042	Xtriage
Bulk solvent $k_{sol}$ (e/Å <sup>3</sup> ), $B_{sol}$ (Å <sup>2</sup> )	0.34 , 42.0	EDS
L-test for twinning <sup>2</sup>	$\langle  L  \rangle = 0.49$ , $\langle L^2 \rangle = 0.33$	Xtriage
Estimated twinning fraction	No twinning to report.	Xtriage
$F_o, F_c$ correlation	0.95	EDS
Total number of atoms	5213	wwPDB-VP
Average B, all atoms (Å <sup>2</sup> )	51.0	wwPDB-VP

Xtriage's analysis on translational NCS is as follows: *The largest off-origin peak in the Patterson function is 3.33% of the height of the origin peak. No significant pseudotranslation is detected.*

<sup>1</sup>Intensities estimated from amplitudes.

<sup>2</sup>Theoretical values of  $\langle |L| \rangle$ ,  $\langle L^2 \rangle$  for acentric reflections are 0.5, 0.333 respectively for untwinned datasets, and 0.375, 0.2 for perfectly twinned datasets.

## 5 Model quality [i](#)

### 5.1 Standard geometry [i](#)

Bond lengths and bond angles in the following residue types are not validated in this section: XYP

The Z score for a bond length (or angle) is the number of standard deviations the observed value is removed from the expected value. A bond length (or angle) with  $|Z| > 5$  is considered an outlier worth inspection. RMSZ is the root-mean-square of all Z scores of the bond lengths (or angles).

Mol	Chain	Bond lengths		Bond angles	
		RMSZ	$\# Z  > 5$	RMSZ	$\# Z  > 5$
1	A	0.38	0/2519	0.62	1/3415 (0.0%)
1	B	0.37	0/2533	0.60	1/3435 (0.0%)
All	All	0.37	0/5052	0.61	2/6850 (0.0%)

There are no bond length outliers.

All (2) bond angle outliers are listed below:

Mol	Chain	Res	Type	Atoms	Z	Observed(°)	Ideal(°)
1	B	162	VAL	N-CA-C	-5.45	96.27	111.00
1	A	162	VAL	N-CA-C	-5.22	96.91	111.00

There are no chirality outliers.

There are no planarity outliers.

### 5.2 Too-close contacts [i](#)

In the following table, the Non-H and H(model) columns list the number of non-hydrogen atoms and hydrogen atoms in the chain respectively. The H(added) column lists the number of hydrogen atoms added and optimized by MolProbity. The Clashes column lists the number of clashes within the asymmetric unit, whereas Symm-Clashes lists symmetry related clashes.

Mol	Chain	Non-H	H(model)	H(added)	Clashes	Symm-Clashes
1	A	2451	0	2318	80	0
1	B	2464	0	2329	85	0
2	C	19	0	0	1	0
2	D	19	0	0	1	0
3	A	154	0	0	11	0
3	B	106	0	0	4	0
All	All	5213	0	4647	157	0

The all-atom clashscore is defined as the number of clashes found per 1000 atoms (including hydrogen atoms). The all-atom clashscore for this structure is 16.

All (157) close contacts within the same asymmetric unit are listed below, sorted by their clash magnitude.

Atom-1	Atom-2	Interatomic distance (Å)	Clash overlap (Å)
1:A:134:MET:HE2	1:A:140:THR:H	1.06	1.10
1:B:276:THR:HG22	1:B:277:HIS:H	1.24	1.02
1:A:82:VAL:HG21	1:A:309:PRO:HB2	1.44	0.98
1:B:82:VAL:HG21	1:B:309:PRO:HB2	1.48	0.94
1:A:134:MET:HE2	1:A:140:THR:N	1.86	0.90
1:A:170:ASP:O	1:A:173:ILE:HG22	1.73	0.87
1:A:134:MET:CE	1:A:140:THR:H	1.89	0.86
1:B:74:LYS:O	1:B:200:GLU:HG2	1.81	0.79
1:A:333:ILE:HG22	3:A:745:HOH:O	1.86	0.75
1:A:82:VAL:HG13	1:A:343:ALA:HB2	1.69	0.74
1:B:181:ILE:O	1:B:185:GLU:HG3	1.89	0.73
1:B:276:THR:CG2	1:B:277:HIS:H	2.04	0.70
1:B:134:MET:HE2	1:B:140:THR:H	1.57	0.69
1:A:318:MET:HG2	3:A:746:HOH:O	1.93	0.68
1:B:291:THR:O	1:B:295:VAL:HG23	1.93	0.68
1:A:87:MET:HE2	1:A:88:GLY:N	2.09	0.67
1:A:147:ASP:OD1	1:A:194:ARG:NH2	2.26	0.67
1:A:255:ILE:HD13	1:B:295:VAL:HG22	1.75	0.66
1:A:221:ASP:O	1:A:225:ARG:HG2	1.96	0.66
1:B:276:THR:HG22	1:B:277:HIS:N	2.04	0.65
1:B:85:MET:HG2	1:B:162:VAL:HG11	1.78	0.64
1:A:257:ILE:HG21	1:A:308:ILE:CD1	2.28	0.64
1:B:317:VAL:O	1:B:317:VAL:HG22	1.98	0.64
1:B:315:PHE:HD2	1:B:333:ILE:HG21	1.64	0.63
1:A:87:MET:HE2	1:A:88:GLY:H	1.62	0.63
1:A:81:MET:O	1:A:85:MET:HG3	2.01	0.61
1:B:134:MET:CE	1:B:140:THR:H	2.15	0.60
1:A:281:GLY:O	1:A:282:THR:HG22	2.01	0.60
1:B:134:MET:HE2	1:B:140:THR:HB	1.84	0.59
1:B:74:LYS:HG3	1:B:200:GLU:HG3	1.85	0.58
1:A:326:ARG:HG2	1:A:330:TYR:HE2	1.68	0.58
1:A:257:ILE:HG21	1:A:308:ILE:HD11	1.85	0.57
1:B:134:MET:HE2	1:B:140:THR:CB	2.35	0.57
1:B:174:LYS:NZ	1:B:212:GLY:HA3	2.19	0.56
1:A:255:ILE:HG13	1:B:250:ASN:HA	1.87	0.56
1:A:252:LEU:C	1:A:252:LEU:HD23	2.26	0.56
1:B:290:ASP:HB3	3:B:699:HOH:O	2.06	0.55

*Continued on next page...*

*Continued from previous page...*

Atom-1	Atom-2	Interatomic distance (Å)	Clash overlap (Å)
1:B:310:VAL:HB	1:B:342:PHE:CD1	2.41	0.55
1:B:87:MET:HE1	1:B:346:VAL:HB	1.88	0.55
1:A:255:ILE:HD11	1:B:251:THR:OG1	2.07	0.55
1:B:307:ASN:O	1:B:308:ILE:HD13	2.06	0.54
1:A:198:LYS:O	1:A:237:ARG:NH2	2.36	0.54
1:A:74:LYS:N	3:A:703:HOH:O	2.40	0.54
1:A:206:ILE:HD12	1:A:241:ILE:HG22	1.89	0.54
1:A:317:VAL:HG21	2:C:1:XYP:O5	2.08	0.54
1:A:85:MET:HG2	1:A:162:VAL:HG11	1.89	0.54
1:A:317:VAL:HG22	1:A:317:VAL:O	2.07	0.54
1:B:316:ALA:HB1	1:B:330:TYR:CZ	2.42	0.54
1:A:333:ILE:CG2	3:A:745:HOH:O	2.49	0.53
1:B:299:VAL:HG12	1:B:310:VAL:HG21	1.91	0.53
1:A:326:ARG:HG2	1:A:330:TYR:CE2	2.43	0.53
1:A:87:MET:SD	1:A:377:LEU:HD22	2.49	0.53
1:A:256:LYS:NZ	3:A:737:HOH:O	2.42	0.52
1:A:298:PHE:HB2	3:A:716:HOH:O	2.07	0.52
1:B:214:ILE:HG13	1:B:218:GLN:OE1	2.10	0.52
1:B:242:GLY:O	1:B:254:ASN:ND2	2.43	0.52
1:A:191:ILE:O	1:A:195:PHE:HD1	1.93	0.52
1:A:374:LEU:HD22	1:A:378:PHE:HE2	1.74	0.52
1:B:315:PHE:CD2	1:B:333:ILE:HG21	2.45	0.52
1:A:310:VAL:HB	1:A:342:PHE:CD1	2.45	0.52
1:B:290:ASP:O	1:B:293:VAL:HG12	2.10	0.52
1:A:217:GLU:HG2	1:A:218:GLN:N	2.25	0.52
1:A:289:MET:O	1:A:293:VAL:HG13	2.09	0.51
1:B:187:ILE:O	1:B:191:ILE:HG13	2.10	0.51
1:B:276:THR:HA	3:B:677:HOH:O	2.10	0.51
1:A:176:ASP:OD2	1:A:179:GLY:HA3	2.09	0.51
1:A:76:VAL:HG21	1:A:200:GLU:OE2	2.10	0.51
1:B:264:ILE:HG12	1:B:309:PRO:HG2	1.93	0.51
1:A:329:TRP:CZ2	1:A:333:ILE:HD11	2.46	0.51
1:A:255:ILE:HD13	1:B:295:VAL:CG2	2.41	0.51
1:B:215:THR:OG1	1:B:218:GLN:HG3	2.12	0.50
1:B:320:TYR:CD2	1:B:326:ARG:HG3	2.47	0.50
1:A:290:ASP:O	1:A:293:VAL:HG22	2.11	0.50
1:B:87:MET:HE2	1:B:88:GLY:O	2.11	0.50
1:A:137:TYR:CD1	1:A:138:PRO:HA	2.46	0.50
1:A:225:ARG:O	1:A:229:ILE:HG12	2.12	0.49
1:B:137:TYR:CG	1:B:138:PRO:HA	2.47	0.49
1:B:253:VAL:HB	1:B:302:TRP:CD1	2.47	0.49

*Continued on next page...*

*Continued from previous page...*

Atom-1	Atom-2	Interatomic distance (Å)	Clash overlap (Å)
1:B:93:ASN:ND2	1:B:349:ASN:HB2	2.27	0.49
1:B:74:LYS:O	1:B:76:VAL:HG23	2.12	0.49
1:A:212:GLY:HA2	1:A:270:TYR:OH	2.11	0.49
1:A:291:THR:O	1:A:295:VAL:HG23	2.12	0.49
1:B:205:GLU:HA	1:B:240:ILE:HB	1.93	0.49
1:B:300:LYS:HE3	1:B:304:ASP:OD2	2.13	0.48
1:B:315:PHE:CE1	1:B:344:CYS:HB3	2.48	0.48
1:B:166:ASN:HB3	1:B:205:GLU:HB3	1.95	0.48
1:B:108:MET:HB2	1:B:111:TYR:CE1	2.49	0.48
1:B:174:LYS:HZ3	1:B:212:GLY:HA3	1.78	0.47
1:B:317:VAL:O	1:B:317:VAL:CG2	2.62	0.47
1:A:253:VAL:HB	1:A:302:TRP:CD1	2.49	0.47
1:B:146:LEU:HD22	1:B:194:ARG:HG2	1.96	0.47
1:B:126:PRO:HB3	1:B:168:HIS:CD2	2.50	0.47
1:A:255:ILE:HG21	1:B:291:THR:HG23	1.95	0.47
1:B:173:ILE:HD12	1:B:184:PHE:HB2	1.96	0.47
1:B:194:ARG:HD3	3:B:643:HOH:O	2.12	0.47
1:B:75:ALA:HB2	1:B:236:THR:HG21	1.96	0.47
1:B:173:ILE:HD12	1:B:184:PHE:CB	2.45	0.46
1:A:291:THR:HG23	1:B:255:ILE:HG21	1.97	0.46
1:B:328:LYS:HB2	1:B:328:LYS:NZ	2.31	0.46
1:A:166:ASN:HB3	1:A:205:GLU:HB3	1.98	0.46
1:A:317:VAL:C	1:A:318:MET:HG3	2.35	0.46
1:B:139:TYR:CD1	1:B:183:ARG:HG3	2.50	0.46
1:A:371:THR:HB	3:A:721:HOH:O	2.13	0.46
1:B:292:VAL:HG11	1:B:333:ILE:CD1	2.46	0.46
1:A:287:GLU:HG2	3:A:743:HOH:O	2.16	0.46
1:B:317:VAL:HG21	2:D:1:XYP:O5	2.15	0.46
1:A:274:GLU:O	1:A:275:PHE:HB2	2.16	0.46
1:A:282:THR:HG21	1:A:321:ALA:HB2	1.98	0.45
1:A:261:PRO:HG2	1:A:262:TYR:CD2	2.51	0.45
1:B:147:ASP:OD1	1:B:194:ARG:NH2	2.32	0.45
1:B:330:TYR:HD2	1:B:377:LEU:HD21	1.80	0.45
1:B:247:ASN:HA	1:B:269:TYR:CE1	2.51	0.45
1:A:87:MET:HE2	1:A:88:GLY:O	2.16	0.45
1:B:87:MET:CE	1:B:346:VAL:HB	2.46	0.45
1:A:317:VAL:HG13	1:A:317:VAL:O	2.16	0.45
1:A:331:ASP:HB2	1:A:376:ALA:HB1	1.99	0.45
1:A:139:TYR:CD1	1:A:183:ARG:HG3	2.52	0.45
1:B:193:GLU:OE2	1:B:196:LYS:HD3	2.16	0.45
1:A:247:ASN:HB3	1:A:270:TYR:O	2.16	0.45

*Continued on next page...*

*Continued from previous page...*

Atom-1	Atom-2	Interatomic distance (Å)	Clash overlap (Å)
1:A:175:GLU:HB3	3:A:731:HOH:O	2.15	0.45
1:A:306:ASN:O	1:A:308:ILE:HG13	2.16	0.45
1:B:124:ARG:O	1:B:126:PRO:HD3	2.16	0.45
1:B:196:LYS:HA	1:B:234:ASN:OD1	2.17	0.45
1:A:274:GLU:O	1:A:274:GLU:HG2	2.17	0.44
1:A:270:TYR:CE2	1:A:272:PRO:HG3	2.52	0.44
1:B:141:ILE:HD11	1:B:187:ILE:HG23	1.98	0.44
1:B:193:GLU:O	1:B:196:LYS:HG2	2.17	0.44
1:B:74:LYS:HA	1:B:200:GLU:HG2	1.99	0.44
1:A:255:ILE:CD1	1:B:295:VAL:HG22	2.46	0.43
1:B:89:THR:O	1:B:123:VAL:HA	2.18	0.43
1:B:199:SER:O	1:B:237:ARG:NH2	2.51	0.43
1:A:244:GLY:HA3	1:A:252:LEU:O	2.18	0.43
1:A:374:LEU:HA	1:A:374:LEU:HD23	1.88	0.43
1:A:215:THR:OG1	1:A:218:GLN:HG3	2.18	0.43
1:B:109:GLU:HG3	1:B:155:TRP:CG	2.54	0.43
1:B:95:LEU:HD23	1:B:100:GLU:HG3	2.01	0.42
1:A:164:ILE:HD12	1:A:164:ILE:N	2.34	0.42
1:A:194:ARG:HD3	3:A:634:HOH:O	2.20	0.42
1:B:230:ILE:O	1:B:234:ASN:HB2	2.19	0.42
1:A:241:ILE:HD13	1:A:241:ILE:H	1.84	0.42
1:B:110:TYR:HA	1:B:113:ASP:OD2	2.20	0.42
1:A:134:MET:HE3	1:A:138:PRO:HD2	2.01	0.42
1:A:311:TYR:HA	1:A:343:ALA:O	2.20	0.42
1:B:112:PHE:HB3	1:B:159:ARG:HD2	2.01	0.42
1:A:250:ASN:HA	1:B:255:ILE:HG12	2.02	0.42
1:B:359:MET:HG3	1:B:359:MET:O	2.20	0.41
1:B:234:ASN:HB3	1:B:237:ARG:HB3	2.02	0.41
1:A:299:VAL:O	1:A:302:TRP:HB3	2.21	0.41
1:A:351:VAL:H	1:A:360:ALA:HB2	1.85	0.41
1:A:76:VAL:HG23	3:A:601:HOH:O	2.20	0.41
1:A:168:HIS:O	1:A:169:HIS:HB2	2.20	0.41
1:B:126:PRO:HB3	1:B:168:HIS:CG	2.55	0.41
1:B:294:ARG:NH1	3:B:699:HOH:O	2.52	0.41
1:B:139:TYR:HE2	1:B:182:GLU:HG2	1.86	0.40
1:B:166:ASN:OD1	1:B:166:ASN:C	2.60	0.40
1:A:134:MET:CE	1:A:138:PRO:HD2	2.51	0.40
1:B:287:GLU:HA	1:B:290:ASP:OD2	2.21	0.40

There are no symmetry-related clashes.

## 5.3 Torsion angles [i](#)

### 5.3.1 Protein backbone [i](#)

In the following table, the Percentiles column shows the percent Ramachandran outliers of the chain as a percentile score with respect to all X-ray entries followed by that with respect to entries of similar resolution.

The Analysed column shows the number of residues for which the backbone conformation was analysed, and the total number of residues.

Mol	Chain	Analysed	Favoured	Allowed	Outliers	Percentiles	
1	A	289/403 (72%)	270 (93%)	16 (6%)	3 (1%)	15	28
1	B	290/403 (72%)	267 (92%)	20 (7%)	3 (1%)	15	28
All	All	579/806 (72%)	537 (93%)	36 (6%)	6 (1%)	15	28

All (6) Ramachandran outliers are listed below:

Mol	Chain	Res	Type
1	B	276	THR
1	A	208	ASN
1	A	371	THR
1	A	282	THR
1	B	106	SER
1	B	208	ASN

### 5.3.2 Protein sidechains [i](#)

In the following table, the Percentiles column shows the percent sidechain outliers of the chain as a percentile score with respect to all X-ray entries followed by that with respect to entries of similar resolution.

The Analysed column shows the number of residues for which the sidechain conformation was analysed, and the total number of residues.

Mol	Chain	Analysed	Rotameric	Outliers	Percentiles	
1	A	261/353 (74%)	256 (98%)	5 (2%)	57	80
1	B	263/353 (74%)	256 (97%)	7 (3%)	44	71
All	All	524/706 (74%)	512 (98%)	12 (2%)	50	76

All (12) residues with a non-rotameric sidechain are listed below:

Mol	Chain	Res	Type
1	A	77	ASP
1	A	241	ILE
1	A	282	THR
1	A	328	LYS
1	A	371	THR
1	B	74	LYS
1	B	200	GLU
1	B	203	LEU
1	B	276	THR
1	B	318	MET
1	B	328	LYS
1	B	375	ASN

Some sidechains can be flipped to improve hydrogen bonding and reduce clashes. All (7) such sidechains are listed below:

Mol	Chain	Res	Type
1	A	168	HIS
1	A	180	ASN
1	B	168	HIS
1	B	180	ASN
1	B	197	ASN
1	B	268	HIS
1	B	375	ASN

### 5.3.3 RNA ⓘ

There are no RNA molecules in this entry.

## 5.4 Non-standard residues in protein, DNA, RNA chains ⓘ

There are no non-standard protein/DNA/RNA residues in this entry.

## 5.5 Carbohydrates ⓘ

4 monosaccharides are modelled in this entry.

In the following table, the Counts columns list the number of bonds (or angles) for which Mogul statistics could be retrieved, the number of bonds (or angles) that are observed in the model and the number of bonds (or angles) that are defined in the Chemical Component Dictionary. The Link column lists molecule types, if any, to which the group is linked. The Z score for a bond length (or angle) is the number of standard deviations the observed value is removed from the



expected value. A bond length (or angle) with  $|Z| > 2$  is considered an outlier worth inspection. RMSZ is the root-mean-square of all Z scores of the bond lengths (or angles).

Mol	Type	Chain	Res	Link	Bond lengths			Bond angles		
					Counts	RMSZ	$\# Z  > 2$	Counts	RMSZ	$\# Z  > 2$
2	XYP	C	1	2	10,10,10	1.50	1 (10%)	14,14,14	2.39	2 (14%)
2	XYP	C	2	2	9,9,10	2.01	4 (44%)	10,12,14	1.27	2 (20%)
2	XYP	D	1	2	10,10,10	1.57	3 (30%)	14,14,14	2.47	2 (14%)
2	XYP	D	2	2	9,9,10	1.87	4 (44%)	10,12,14	1.24	2 (20%)

In the following table, the Chirals column lists the number of chiral outliers, the number of chiral centers analysed, the number of these observed in the model and the number defined in the Chemical Component Dictionary. Similar counts are reported in the Torsion and Rings columns. '-' means no outliers of that kind were identified.

Mol	Type	Chain	Res	Link	Chirals	Torsions	Rings
2	XYP	C	1	2	-	-	0/1/1/1
2	XYP	C	2	2	-	-	0/1/1/1
2	XYP	D	1	2	-	-	0/1/1/1
2	XYP	D	2	2	-	-	0/1/1/1

All (12) bond length outliers are listed below:

Mol	Chain	Res	Type	Atoms	Z	Observed(Å)	Ideal(Å)
2	D	2	XYP	C1-C2	2.98	1.59	1.52
2	C	2	XYP	C5-C4	2.81	1.58	1.52
2	C	2	XYP	C2-C3	2.80	1.56	1.52
2	D	2	XYP	C2-C3	2.65	1.56	1.52
2	C	2	XYP	C4-C3	2.51	1.56	1.52
2	D	2	XYP	C4-C3	2.47	1.56	1.52
2	C	2	XYP	C1-C2	2.45	1.57	1.52
2	C	1	XYP	O5-C1	2.42	1.46	1.43
2	D	1	XYP	C5-C4	2.28	1.57	1.52
2	D	1	XYP	C1-C2	2.14	1.57	1.52
2	D	1	XYP	C4-C3	2.06	1.55	1.52
2	D	2	XYP	C5-C4	2.01	1.56	1.52

All (8) bond angle outliers are listed below:

Mol	Chain	Res	Type	Atoms	Z	Observed(°)	Ideal(°)
2	D	1	XYP	O4-C4-C3	-8.68	92.75	110.14
2	C	1	XYP	O4-C4-C3	-8.42	93.26	110.14
2	C	2	XYP	C4-C3-C2	-3.18	107.14	110.92

*Continued on next page...*

*Continued from previous page...*

Mol	Chain	Res	Type	Atoms	Z	Observed(°)	Ideal(°)
2	D	2	XYP	C4-C3-C2	-2.97	107.39	110.92
2	D	1	XYP	C4-C3-C2	-2.68	106.25	110.89
2	C	1	XYP	C4-C3-C2	-2.43	106.69	110.89
2	D	2	XYP	C5-C4-C3	-2.39	106.73	109.67
2	C	2	XYP	C5-C4-C3	-2.26	106.89	109.67

There are no chirality outliers.

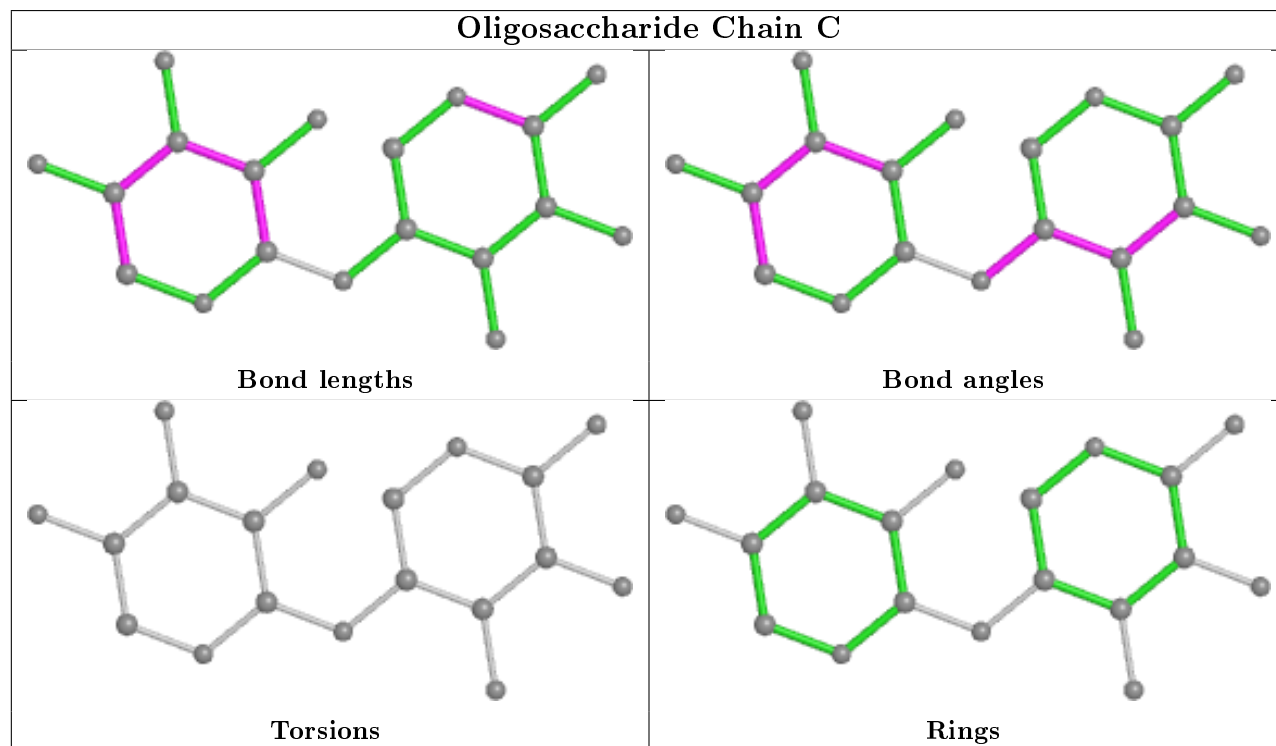
There are no torsion outliers.

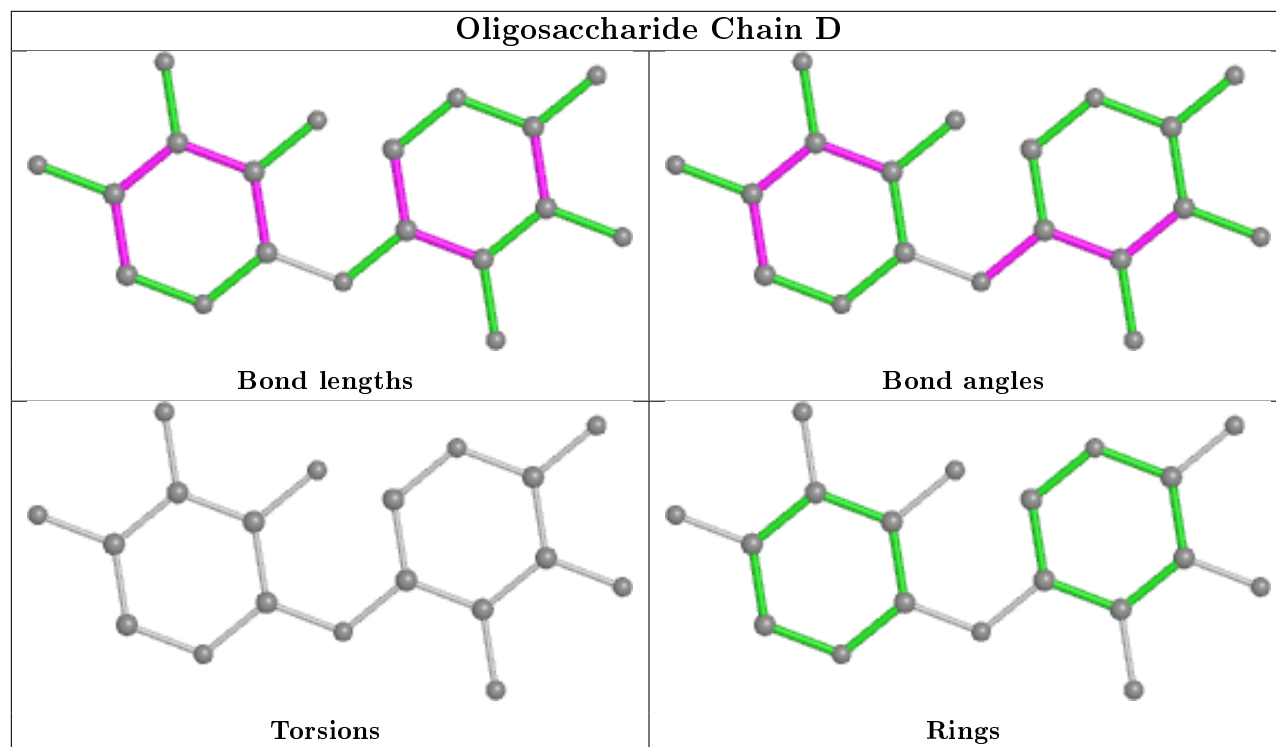
There are no ring outliers.

2 monomers are involved in 2 short contacts:

Mol	Chain	Res	Type	Clashes	Symm-Clashes
2	D	1	XYP	1	0
2	C	1	XYP	1	0

The following is a two-dimensional graphical depiction of Mogul quality analysis of bond lengths, bond angles, torsion angles, and ring geometry for oligosaccharide.





## 5.6 Ligand geometry [i](#)

There are no ligands in this entry.

## 5.7 Other polymers [i](#)

There are no such residues in this entry.

## 5.8 Polymer linkage issues [i](#)

There are no chain breaks in this entry.

## 6 Fit of model and data ⓘ

### 6.1 Protein, DNA and RNA chains ⓘ

In the following table, the column labelled ‘#RSRZ> 2’ contains the number (and percentage) of RSRZ outliers, followed by percent RSRZ outliers for the chain as percentile scores relative to all X-ray entries and entries of similar resolution. The OWAB column contains the minimum, median, 95<sup>th</sup> percentile and maximum values of the occupancy-weighted average B-factor per residue. The column labelled ‘Q< 0.9’ lists the number of (and percentage) of residues with an average occupancy less than 0.9.

Mol	Chain	Analysed	<RSRZ>	#RSRZ>2	OWAB(Å <sup>2</sup> )	Q<0.9
1	A	295/403 (73%)	-0.18	5 (1%) 70 72	31, 44, 71, 89	0
1	B	296/403 (73%)	0.15	15 (5%) 28 29	35, 51, 86, 102	0
All	All	591/806 (73%)	-0.01	20 (3%) 45 48	31, 48, 76, 102	0

All (20) RSRZ outliers are listed below:

Mol	Chain	Res	Type	RSRZ
1	B	276	THR	5.7
1	B	83	ARG	3.8
1	B	283	TRP	3.3
1	B	275	PHE	3.3
1	B	282	THR	3.2
1	A	352	PHE	3.2
1	B	213	ASN	3.1
1	A	275	PHE	3.1
1	B	137	TYR	3.1
1	B	339	GLU	3.1
1	B	135	ARG	2.9
1	B	277	HIS	2.7
1	A	321	ALA	2.7
1	B	375	ASN	2.6
1	A	274	GLU	2.5
1	B	136	THR	2.5
1	A	281	GLY	2.4
1	B	197	ASN	2.2
1	B	324	THR	2.1
1	B	138	PRO	2.0

## 6.2 Non-standard residues in protein, DNA, RNA chains ⓘ

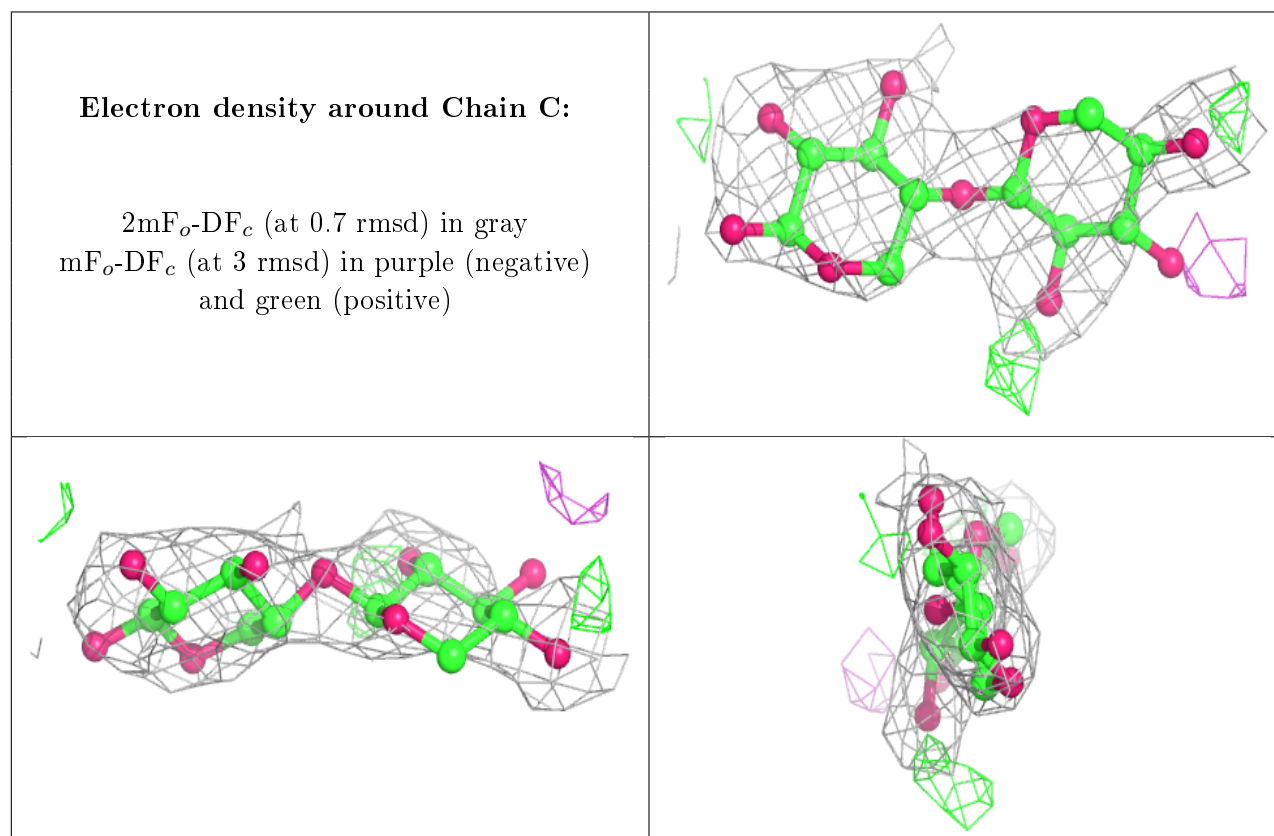
There are no non-standard protein/DNA/RNA residues in this entry.

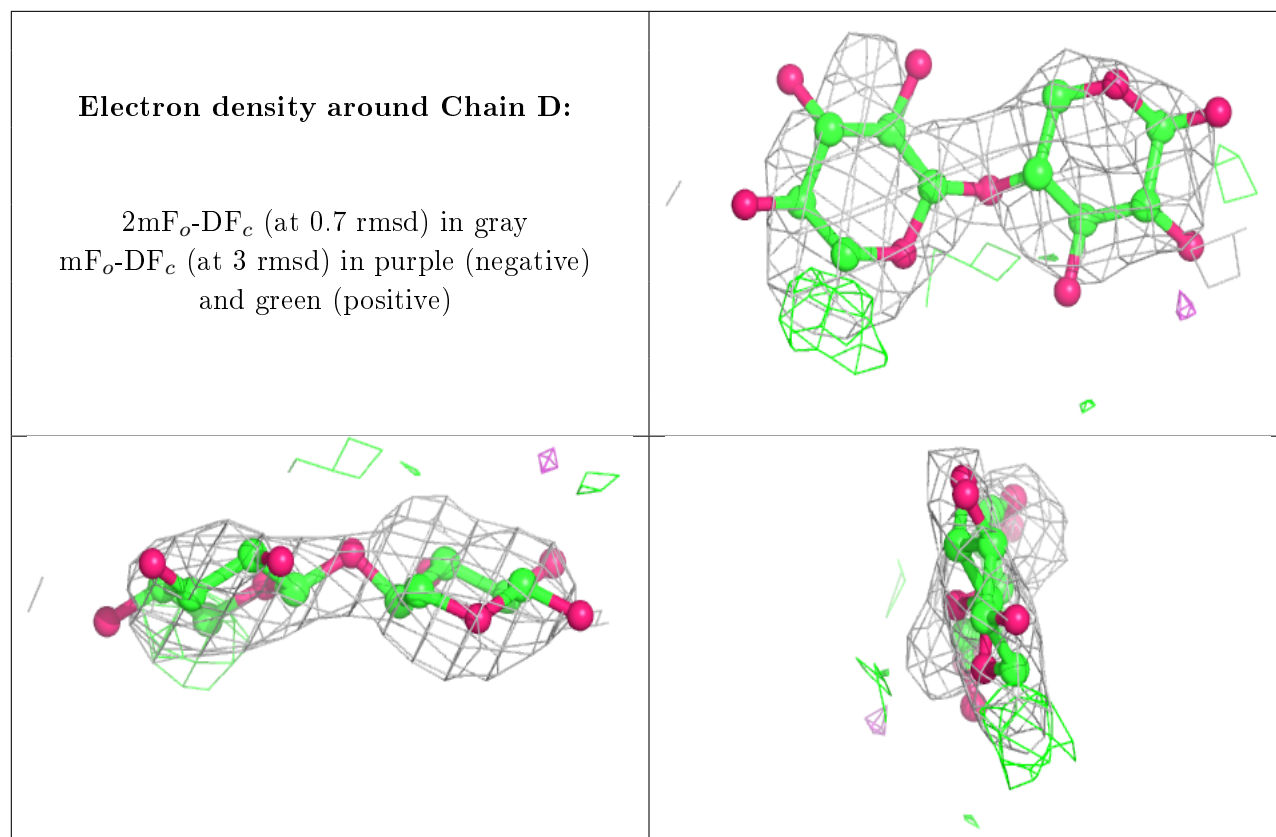
## 6.3 Carbohydrates ⓘ

In the following table, the Atoms column lists the number of modelled atoms in the group and the number defined in the chemical component dictionary. The B-factors column lists the minimum, median, 95<sup>th</sup> percentile and maximum values of B factors of atoms in the group. The column labelled 'Q< 0.9' lists the number of atoms with occupancy less than 0.9.

Mol	Type	Chain	Res	Atoms	RSCC	RSR	B-factors(Å <sup>2</sup> )	Q<0.9
2	XYP	C	2	9/10	0.67	0.48	90,92,93,95	0
2	XYP	D	2	9/10	0.76	0.41	105,106,107,107	0
2	XYP	D	1	10/10	0.86	0.41	103,103,104,105	0
2	XYP	C	1	10/10	0.89	0.22	82,84,86,88	0

The following is a graphical depiction of the model fit to experimental electron density for oligosaccharide. Each fit is shown from different orientation to approximate a three-dimensional view.





## 6.4 Ligands [i](#)

There are no ligands in this entry.

## 6.5 Other polymers [i](#)

There are no such residues in this entry.