



wwPDB EM Validation Summary Report ⓘ

Nov 2, 2022 – 08:41 PM EDT

PDB ID : 5U6Y
EMDB ID : EMD-8514
Title : Pseudo-atomic model of the CaMKIIa holoenzyme.
Authors : Myers, J.; Reichow, S.L.
Deposited on : 2016-12-09
Resolution : 20.00 Å (reported)
Based on initial models : 51G3, 2VZ6

This is a wwPDB EM Validation Summary Report for a publicly released PDB entry.

We welcome your comments at validation@mail.wwpdb.org

A user guide is available at

<https://www.wwpdb.org/validation/2017/EMValidationReportHelp>
with specific help available everywhere you see the ⓘ symbol.

The types of validation reports are described at

<http://www.wwpdb.org/validation/2017/FAQs#types>.

The following versions of software and data (see [references ⓘ](#)) were used in the production of this report:

EMDB validation analysis : 0.0.1.dev43
MolProbity : 4.02b-467
Percentile statistics : 20191225.v01 (using entries in the PDB archive December 25th 2019)
MapQ : 1.9.9
Ideal geometry (proteins) : Engh & Huber (2001)
Ideal geometry (DNA, RNA) : Parkinson et al. (1996)
Validation Pipeline (wwPDB-VP) : 2.31.2

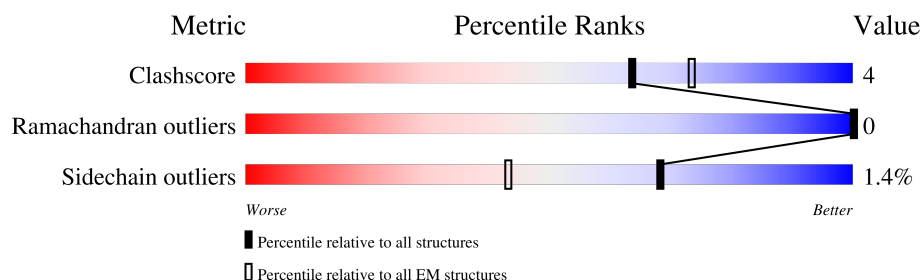
1 Overall quality at a glance

The following experimental techniques were used to determine the structure:

ELECTRON MICROSCOPY

The reported resolution of this entry is 20.00 Å.

Percentile scores (ranging between 0-100) for global validation metrics of the entry are shown in the following graphic. The table shows the number of entries on which the scores are based.







Metric	Whole archive (#Entries)	EM structures (#Entries)
Clashscore	158937	4297
Ramachandran outliers	154571	4023
Sidechain outliers	154315	3826

The table below summarises the geometric issues observed across the polymeric chains and their fit to the map. The red, orange, yellow and green segments of the bar indicate the fraction of residues that contain outliers for ≥ 3 , 2, 1 and 0 types of geometric quality criteria respectively. A grey segment represents the fraction of residues that are not modelled. The numeric value for each fraction is indicated below the corresponding segment, with a dot representing fractions $\leq 5\%$. The upper red bar (where present) indicates the fraction of residues that have poor fit to the EM map (all-atom inclusion $< 40\%$). The numeric value is given above the bar.

Mol	Chain	Length	Quality of chain
1	A	461	<div> <div>21%</div> <div>89%</div> <div>10%</div> </div>
1	B	461	<div> <div>23%</div> <div>87%</div> <div>12%</div> </div>
1	C	461	<div> <div>22%</div> <div>89%</div> <div>10%</div> </div>
1	D	461	<div> <div>22%</div> <div>87%</div> <div>12%</div> </div>
1	E	461	<div> <div>21%</div> <div>87%</div> <div>12%</div> </div>
1	F	461	<div> <div>21%</div> <div>88%</div> <div>11%</div> </div>
1	G	461	<div> <div>22%</div> <div>87%</div> <div>12%</div> </div>
1	H	461	<div> <div>23%</div> <div>88%</div> <div>11%</div> </div>

Continued on next page...

Continued from previous page...

Mol	Chain	Length	Quality of chain
1	I	461	
1	J	461	
1	K	461	
1	L	461	

2 Entry composition

There is only 1 type of molecule in this entry. The entry contains 87197 atoms, of which 43301 are hydrogens and 0 are deuteriums.

In the tables below, the AltConf column contains the number of residues with at least one atom in alternate conformation and the Trace column contains the number of residues modelled with at most 2 atoms.

- Molecule 1 is a protein called Calcium/calmodulin-dependent protein kinase type II subunit alpha.

Mol	Chain	Residues	Atoms						AltConf	Trace
1	A	459	Total	C	H	N	O	S	3	0
			7248	2321	3590	644	676	17		
1	B	459	Total	C	H	N	O	S	3	0
			7251	2321	3593	644	676	17		
1	C	459	Total	C	H	N	O	S	3	0
			7280	2321	3622	644	676	17		
1	D	459	Total	C	H	N	O	S	3	0
			7248	2321	3590	644	676	17		
1	E	459	Total	C	H	N	O	S	3	0
			7254	2321	3596	644	676	17		
1	F	459	Total	C	H	N	O	S	3	0
			7267	2321	3609	644	676	17		
1	G	459	Total	C	H	N	O	S	3	0
			7272	2321	3614	644	676	17		
1	H	459	Total	C	H	N	O	S	3	0
			7284	2321	3626	644	676	17		
1	I	459	Total	C	H	N	O	S	3	0
			7284	2321	3626	644	676	17		
1	J	459	Total	C	H	N	O	S	3	0
			7272	2321	3614	644	676	17		
1	K	459	Total	C	H	N	O	S	3	0
			7272	2321	3614	644	676	17		
1	L	459	Total	C	H	N	O	S	3	0
			7265	2321	3607	644	676	17		

There are 24 discrepancies between the modelled and reference sequences:

Chain	Residue	Modelled	Actual	Comment	Reference
A	0	MET	-	initiating methionine	UNP P11275
A	324	SER	ASN	conflict	UNP P11275
B	0	MET	-	initiating methionine	UNP P11275
B	324	SER	ASN	conflict	UNP P11275
C	0	MET	-	initiating methionine	UNP P11275

Continued on next page...

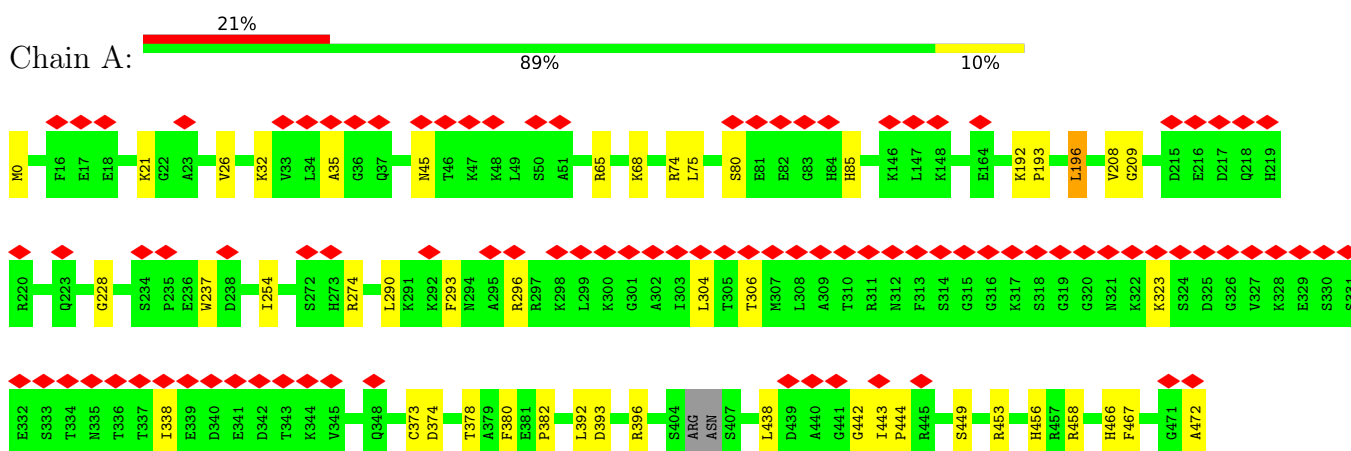
Continued from previous page...

Chain	Residue	Modelled	Actual	Comment	Reference
C	324	SER	ASN	conflict	UNP P11275
D	0	MET	-	initiating methionine	UNP P11275
D	324	SER	ASN	conflict	UNP P11275
E	0	MET	-	initiating methionine	UNP P11275
E	324	SER	ASN	conflict	UNP P11275
F	0	MET	-	initiating methionine	UNP P11275
F	324	SER	ASN	conflict	UNP P11275
G	0	MET	-	initiating methionine	UNP P11275
G	324	SER	ASN	conflict	UNP P11275
H	0	MET	-	initiating methionine	UNP P11275
H	324	SER	ASN	conflict	UNP P11275
I	0	MET	-	initiating methionine	UNP P11275
I	324	SER	ASN	conflict	UNP P11275
J	0	MET	-	initiating methionine	UNP P11275
J	324	SER	ASN	conflict	UNP P11275
K	0	MET	-	initiating methionine	UNP P11275
K	324	SER	ASN	conflict	UNP P11275
L	0	MET	-	initiating methionine	UNP P11275
L	324	SER	ASN	conflict	UNP P11275

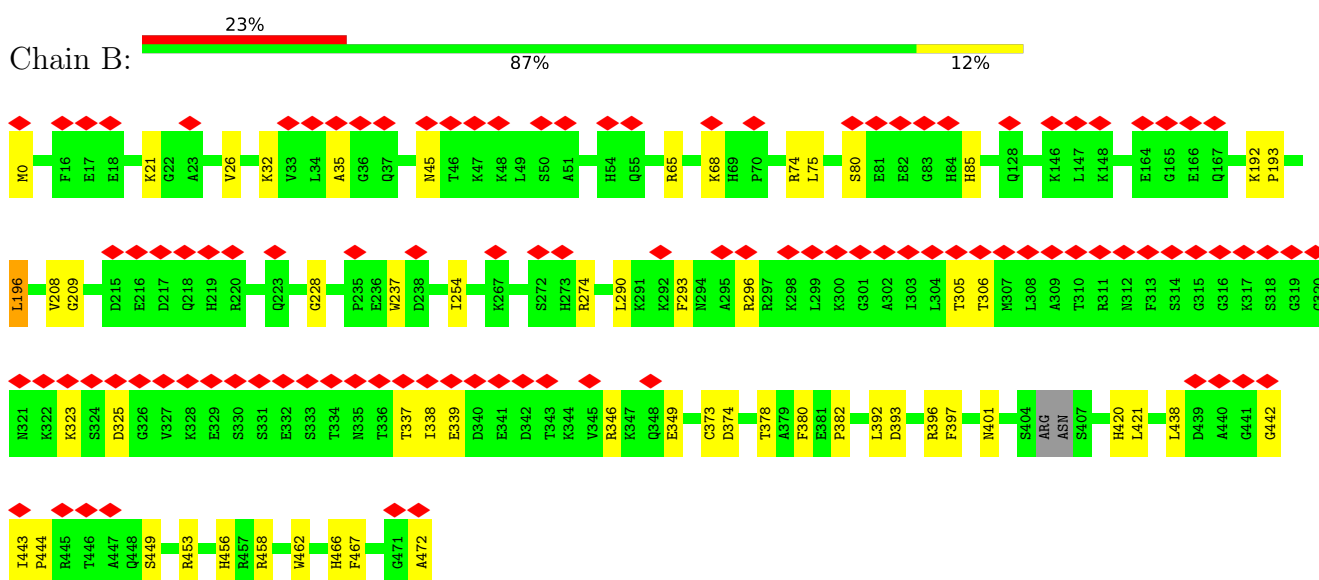
3 Residue-property plots

These plots are drawn for all protein, RNA, DNA and oligosaccharide chains in the entry. The first graphic for a chain summarises the proportions of the various outlier classes displayed in the second graphic. The second graphic shows the sequence view annotated by issues in geometry and atom inclusion in map density. Residues are color-coded according to the number of geometric quality criteria for which they contain at least one outlier: green = 0, yellow = 1, orange = 2 and red = 3 or more. A red diamond above a residue indicates a poor fit to the EM map for this residue (all-atom inclusion < 40%). Stretches of 2 or more consecutive residues without any outlier are shown as a green connector. Residues present in the sample, but not in the model, are shown in grey.

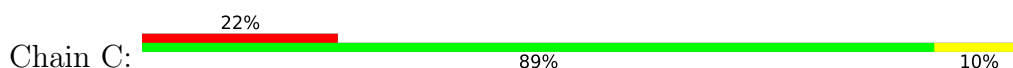
- Molecule 1: Calcium/calmodulin-dependent protein kinase type II subunit alpha

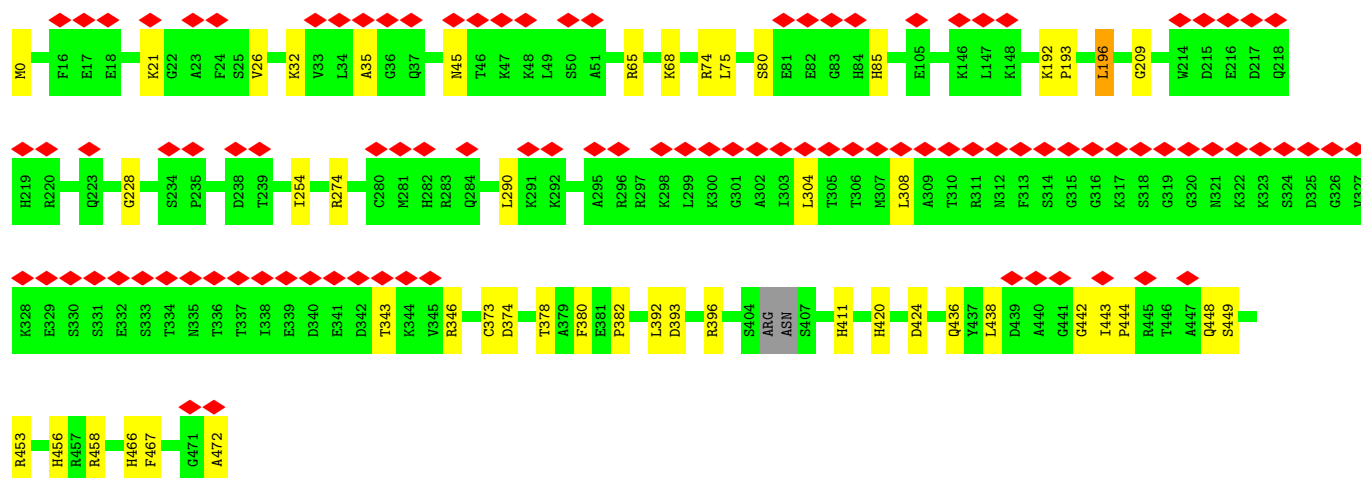


- Molecule 1: Calcium/calmodulin-dependent protein kinase type II subunit alpha

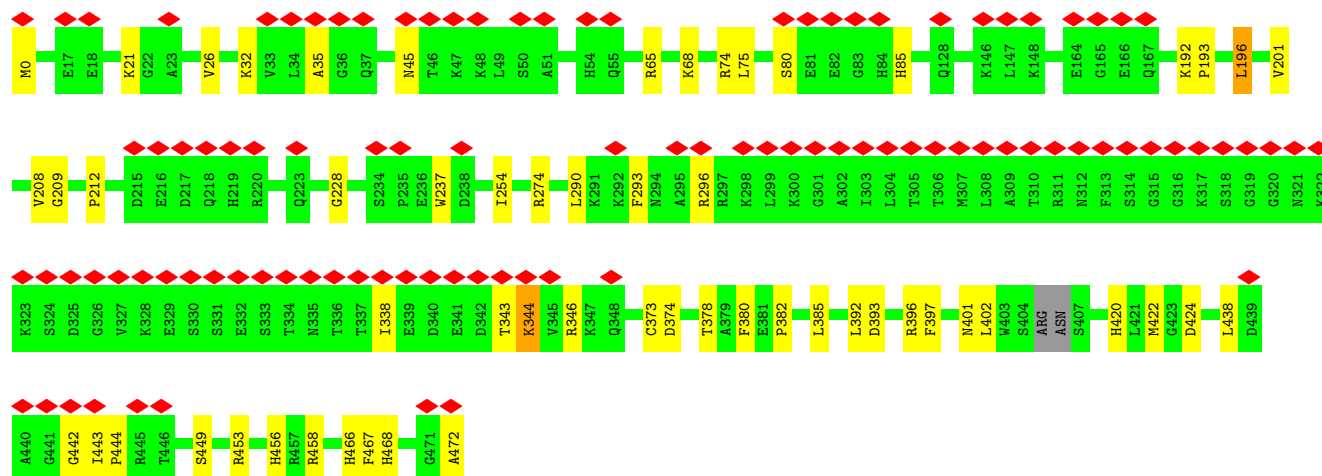
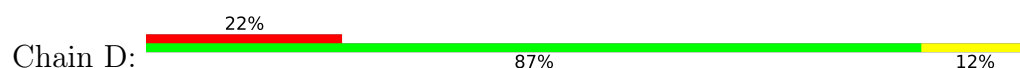


- Molecule 1: Calcium/calmodulin-dependent protein kinase type II subunit alpha

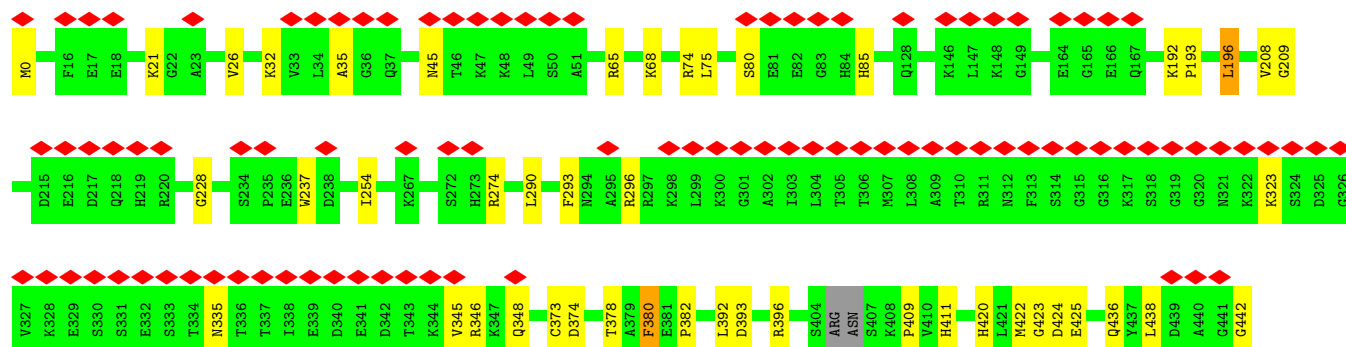
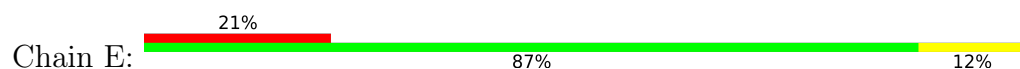




- Molecule 1: Calcium/calmodulin-dependent protein kinase type II subunit alpha

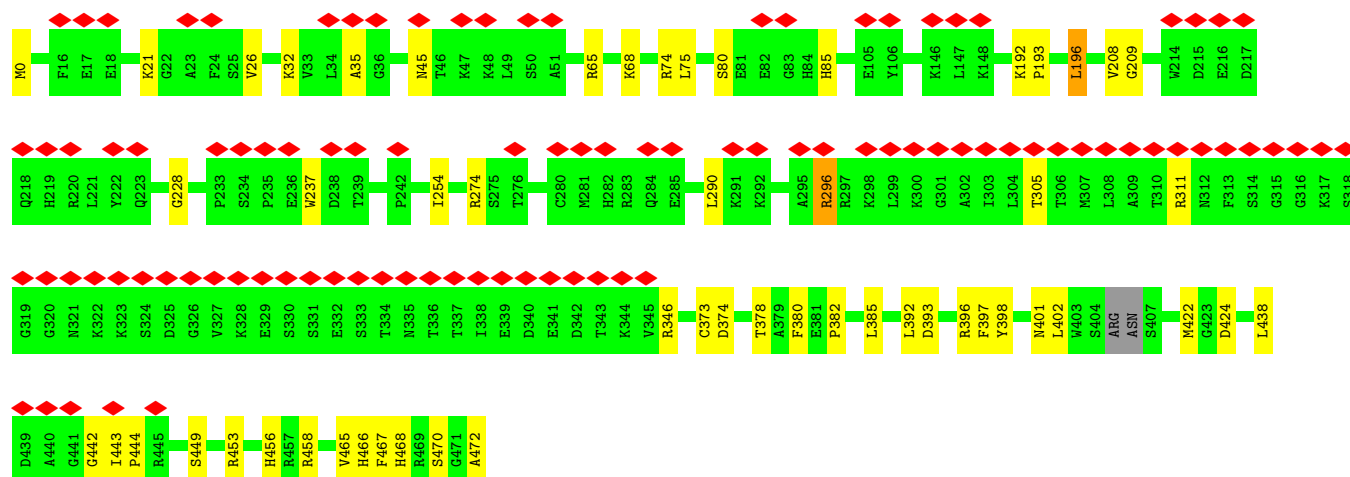
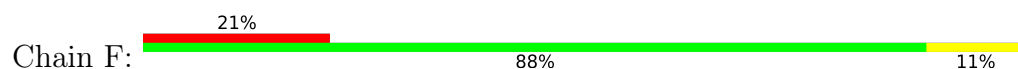


- Molecule 1: Calcium/calmodulin-dependent protein kinase type II subunit alpha

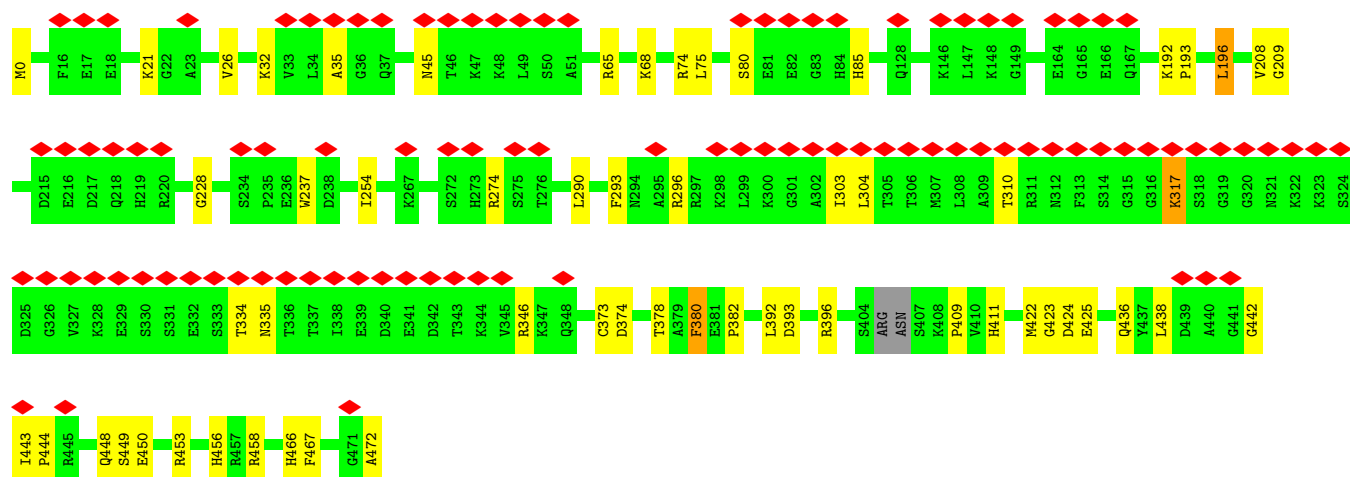
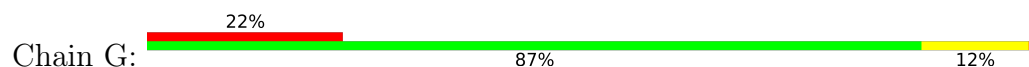




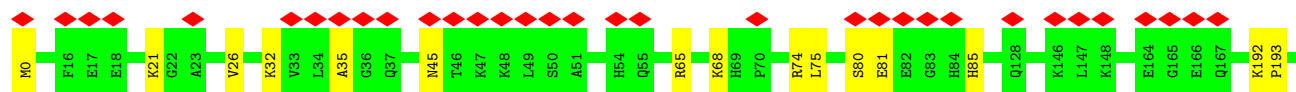
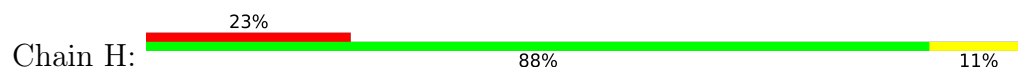
- Molecule 1: Calcium/calmodulin-dependent protein kinase type II subunit alpha

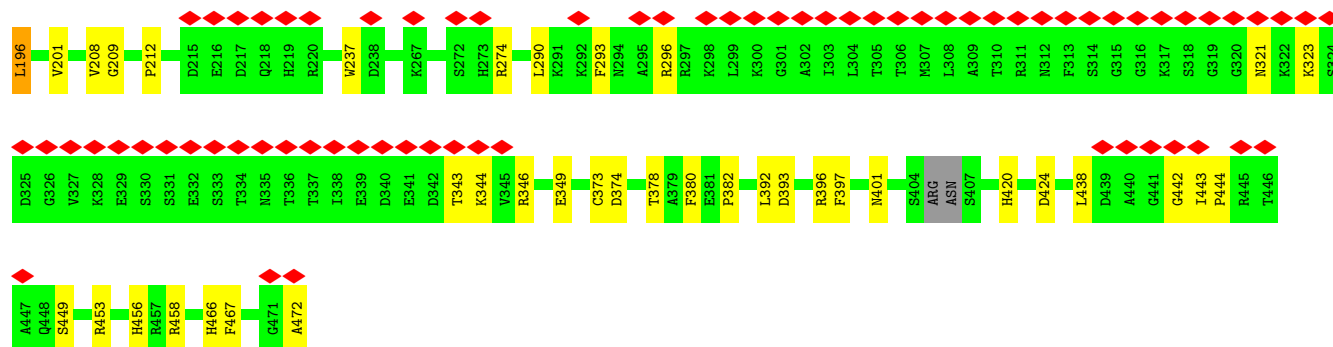


- Molecule 1: Calcium/calmodulin-dependent protein kinase type II subunit alpha

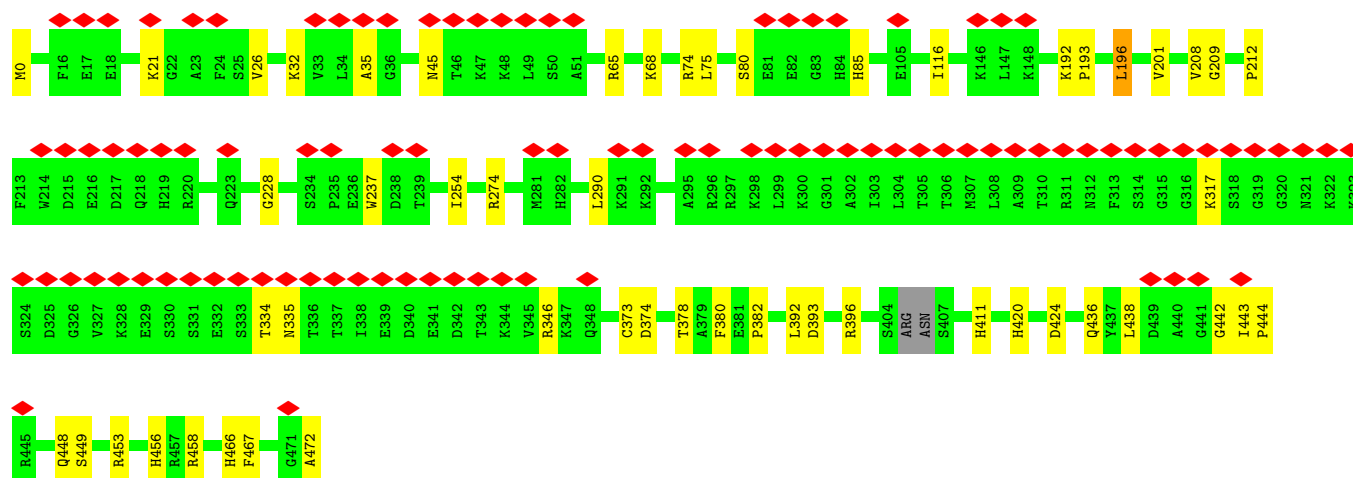
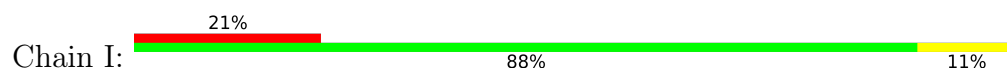


- Molecule 1: Calcium/calmodulin-dependent protein kinase type II subunit alpha

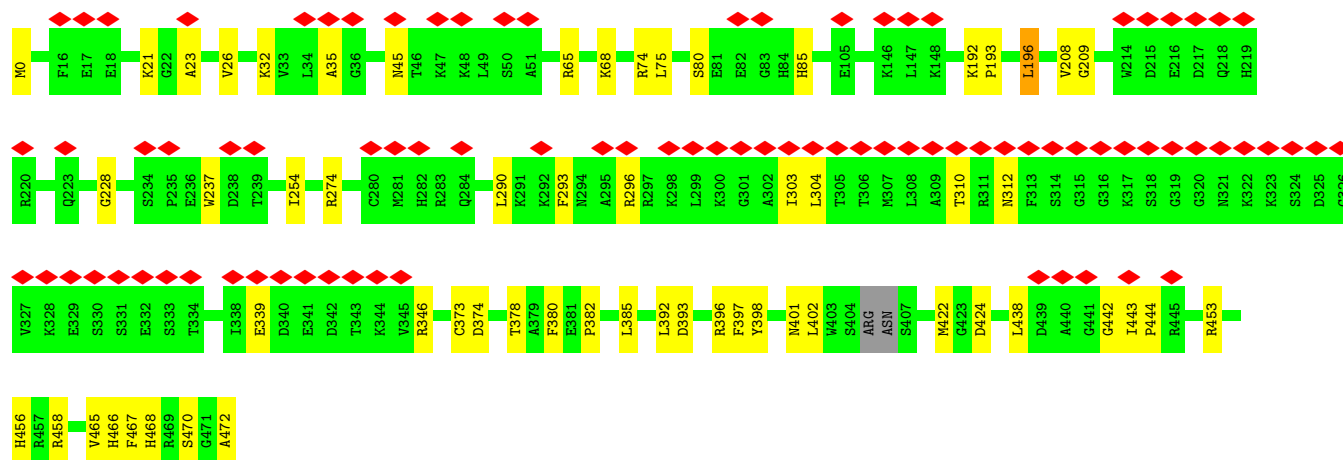
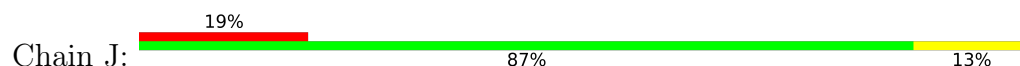




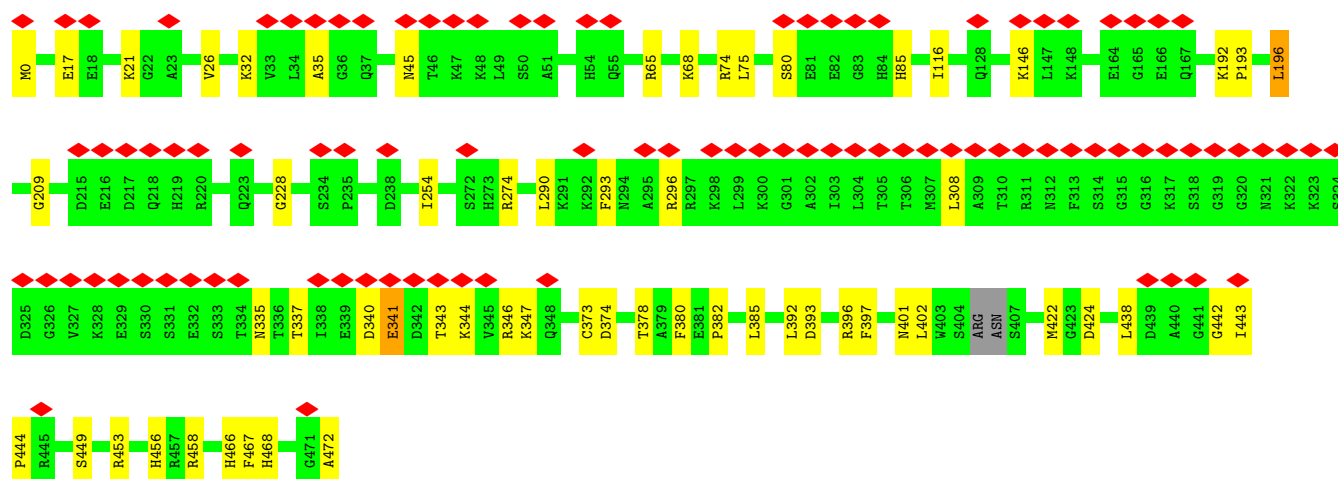
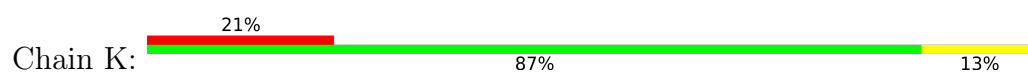
- Molecule 1: Calcium/calmodulin-dependent protein kinase type II subunit alpha



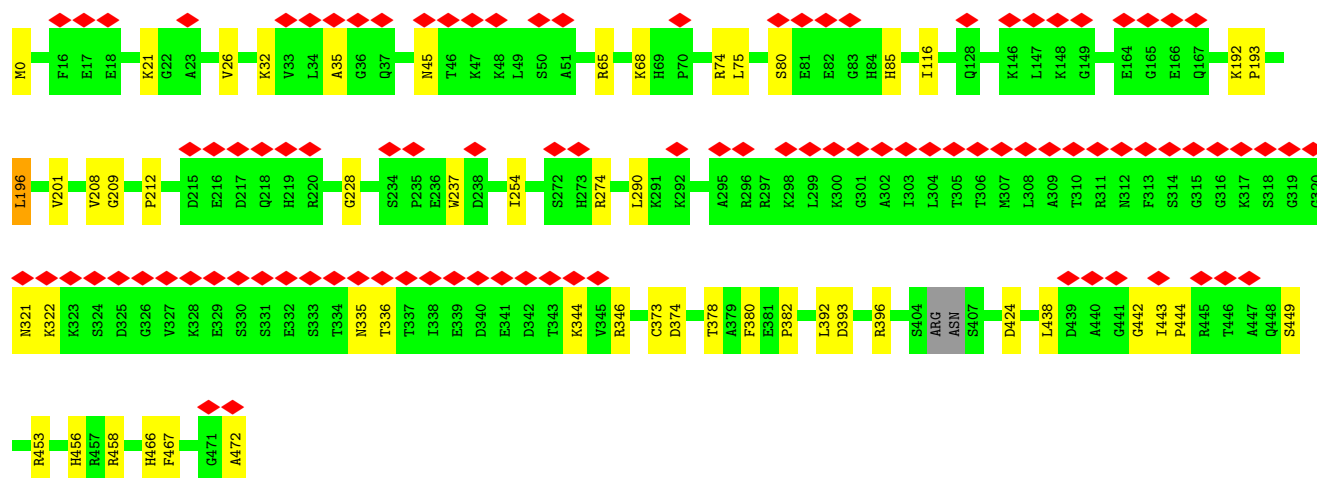
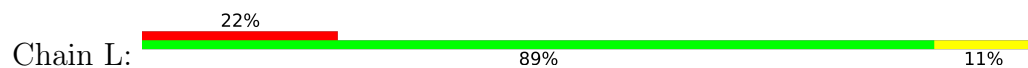
- Molecule 1: Calcium/calmodulin-dependent protein kinase type II subunit alpha



- Molecule 1: Calcium/calmodulin-dependent protein kinase type II subunit alpha



- Molecule 1: Calcium/calmodulin-dependent protein kinase type II subunit alpha



4 Experimental information

Property	Value	Source
EM reconstruction method	SINGLE PARTICLE	Depositor
Imposed symmetry	POINT, D6	Depositor
Number of particles used	2000	Depositor
Resolution determination method	FSC 0.143 CUT-OFF	Depositor
CTF correction method	PHASE FLIPPING AND AMPLITUDE CORRECTION; Performed in EMAN2	Depositor
Microscope	FEI TECNAI 12	Depositor
Voltage (kV)	120	Depositor
Electron dose ($e^-/\text{\AA}^2$)	20	Depositor
Minimum defocus (nm)	Not provided	
Maximum defocus (nm)	Not provided	
Magnification	49000	Depositor
Image detector	FEI EAGLE (2k x 2k)	Depositor
Maximum map value	0.770	Depositor
Minimum map value	-1.184	Depositor
Average map value	0.000	Depositor
Map value standard deviation	0.026	Depositor
Recommended contour level	0.12	Depositor
Map size (Å)	559.36, 559.36, 559.36	wwPDB
Map dimensions	128, 128, 128	wwPDB
Map angles (°)	90.0, 90.0, 90.0	wwPDB
Pixel spacing (Å)	4.37, 4.37, 4.37	Depositor

5 Model quality [i](#)

5.1 Standard geometry [i](#)

The Z score for a bond length (or angle) is the number of standard deviations the observed value is removed from the expected value. A bond length (or angle) with $|Z| > 5$ is considered an outlier worth inspection. RMSZ is the root-mean-square of all Z scores of the bond lengths (or angles).

Mol	Chain	Bond lengths		Bond angles	
		RMSZ	$\# Z > 5$	RMSZ	$\# Z > 5$
1	A	0.66	0/3742	0.73	2/5057 (0.0%)
1	B	0.66	0/3742	0.73	2/5057 (0.0%)
1	C	0.64	0/3742	0.73	2/5057 (0.0%)
1	D	0.65	0/3742	0.73	2/5057 (0.0%)
1	E	0.66	0/3742	0.74	2/5057 (0.0%)
1	F	0.66	0/3742	0.74	2/5057 (0.0%)
1	G	0.66	0/3742	0.74	2/5057 (0.0%)
1	H	0.65	0/3742	0.73	2/5057 (0.0%)
1	I	0.63	0/3742	0.73	2/5057 (0.0%)
1	J	0.65	0/3742	0.72	2/5057 (0.0%)
1	K	0.66	0/3742	0.73	2/5057 (0.0%)
1	L	0.67	0/3742	0.74	2/5057 (0.0%)
All	All	0.65	0/44904	0.73	24/60684 (0.0%)

There are no bond length outliers.

The worst 5 of 24 bond angle outliers are listed below:

Mol	Chain	Res	Type	Atoms	Z	Observed(°)	Ideal(°)
1	C	274	ARG	NE-CZ-NH1	-8.07	116.27	120.30
1	L	274	ARG	NE-CZ-NH1	-7.98	116.31	120.30
1	G	274	ARG	NE-CZ-NH1	-7.96	116.32	120.30
1	F	274	ARG	NE-CZ-NH1	-7.92	116.34	120.30
1	J	274	ARG	NE-CZ-NH1	-7.92	116.34	120.30

There are no chirality outliers.

There are no planarity outliers.

5.2 Too-close contacts [i](#)

In the following table, the Non-H and H(model) columns list the number of non-hydrogen atoms and hydrogen atoms in the chain respectively. The H(added) column lists the number of hydrogen

atoms added and optimized by MolProbity. The Clashes column lists the number of clashes within the asymmetric unit, whereas Symm-Clashes lists symmetry-related clashes.

Mol	Chain	Non-H	H(model)	H(added)	Clashes	Symm-Clashes
1	A	3658	3590	3619	24	0
1	B	3658	3593	3619	40	0
1	C	3658	3622	3619	30	0
1	D	3658	3590	3619	38	0
1	E	3658	3596	3619	40	0
1	F	3658	3609	3619	42	0
1	G	3658	3614	3616	41	0
1	H	3658	3626	3619	32	0
1	I	3658	3626	3619	33	0
1	J	3658	3614	3619	45	0
1	K	3658	3614	3619	43	0
1	L	3658	3607	3619	29	0
All	All	43896	43301	43425	378	0

The all-atom clashscore is defined as the number of clashes found per 1000 atoms (including hydrogen atoms). The all-atom clashscore for this structure is 4.

The worst 5 of 378 close contacts within the same asymmetric unit are listed below, sorted by their clash magnitude.

Atom-1	Atom-2	Interatomic distance (Å)	Clash overlap (Å)
1:B:346:ARG:HB2	1:B:421:LEU:HD13	1.36	1.06
1:E:374:ASP:OD2	1:E:458:ARG:NH1	1.90	1.05
1:H:374:ASP:OD2	1:H:458:ARG:NH1	1.90	1.04
1:J:374:ASP:OD2	1:J:458:ARG:NH1	1.90	1.04
1:K:374:ASP:OD2	1:K:458:ARG:NH1	1.90	1.04

There are no symmetry-related clashes.

5.3 Torsion angles [i](#)

5.3.1 Protein backbone [i](#)

In the following table, the Percentiles column shows the percent Ramachandran outliers of the chain as a percentile score with respect to all PDB entries followed by that with respect to all EM entries.

The Analysed column shows the number of residues for which the backbone conformation was analysed, and the total number of residues.

Mol	Chain	Analysed	Favoured	Allowed	Outliers	Percentiles	
1	A	455/461 (99%)	437 (96%)	18 (4%)	0	100	100
1	B	455/461 (99%)	436 (96%)	19 (4%)	0	100	100
1	C	455/461 (99%)	437 (96%)	18 (4%)	0	100	100
1	D	455/461 (99%)	433 (95%)	22 (5%)	0	100	100
1	E	455/461 (99%)	440 (97%)	15 (3%)	0	100	100
1	F	455/461 (99%)	437 (96%)	18 (4%)	0	100	100
1	G	455/461 (99%)	435 (96%)	20 (4%)	0	100	100
1	H	455/461 (99%)	439 (96%)	16 (4%)	0	100	100
1	I	455/461 (99%)	438 (96%)	17 (4%)	0	100	100
1	J	455/461 (99%)	434 (95%)	21 (5%)	0	100	100
1	K	455/461 (99%)	439 (96%)	16 (4%)	0	100	100
1	L	455/461 (99%)	438 (96%)	17 (4%)	0	100	100
All	All	5460/5532 (99%)	5243 (96%)	217 (4%)	0	100	100

There are no Ramachandran outliers to report.

5.3.2 Protein sidechains ⓘ

In the following table, the Percentiles column shows the percent sidechain outliers of the chain as a percentile score with respect to all PDB entries followed by that with respect to all EM entries.

The Analysed column shows the number of residues for which the sidechain conformation was analysed, and the total number of residues.

Mol	Chain	Analysed	Rotameric	Outliers	Percentiles	
1	A	391/393 (100%)	386 (99%)	5 (1%)	69	81
1	B	391/393 (100%)	384 (98%)	7 (2%)	59	77
1	C	391/393 (100%)	385 (98%)	6 (2%)	65	80
1	D	391/393 (100%)	385 (98%)	6 (2%)	65	80
1	E	391/393 (100%)	386 (99%)	5 (1%)	69	81
1	F	391/393 (100%)	385 (98%)	6 (2%)	65	80
1	G	391/393 (100%)	383 (98%)	8 (2%)	55	74
1	H	391/393 (100%)	385 (98%)	6 (2%)	65	80
1	I	391/393 (100%)	386 (99%)	5 (1%)	69	81

Continued on next page...

Continued from previous page...

Mol	Chain	Analysed	Rotameric	Outliers	Percentiles	
1	J	391/393 (100%)	386 (99%)	5 (1%)	69	81
1	K	391/393 (100%)	386 (99%)	5 (1%)	69	81
1	L	391/393 (100%)	387 (99%)	4 (1%)	76	86
All	All	4692/4716 (100%)	4624 (99%)	68 (1%)	68	80

5 of 68 residues with a non-rotameric sidechain are listed below:

Mol	Chain	Res	Type
1	J	310	THR
1	K	0	MET
1	L	45	ASN
1	E	0	MET
1	D	380	PHE

Sometimes sidechains can be flipped to improve hydrogen bonding and reduce clashes. 5 of 43 such sidechains are listed below:

Mol	Chain	Res	Type
1	H	468	HIS
1	J	468	HIS
1	I	45	ASN
1	J	45	ASN
1	K	76[B]	HIS

5.3.3 RNA [i](#)

There are no RNA molecules in this entry.

5.4 Non-standard residues in protein, DNA, RNA chains [i](#)

There are no non-standard protein/DNA/RNA residues in this entry.

5.5 Carbohydrates [i](#)

There are no monosaccharides in this entry.

5.6 Ligand geometry [i](#)

There are no ligands in this entry.

5.7 Other polymers [i](#)

There are no such residues in this entry.

5.8 Polymer linkage issues [i](#)

There are no chain breaks in this entry.

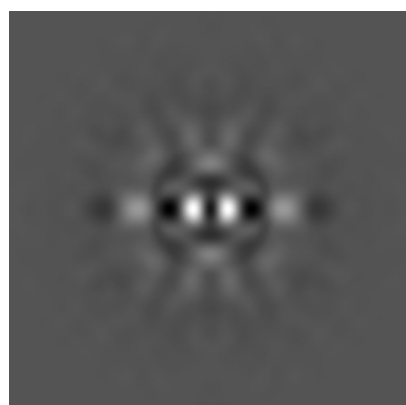
6 Map visualisation [i](#)

This section contains visualisations of the EMDB entry EMD-8514. These allow visual inspection of the internal detail of the map and identification of artifacts.

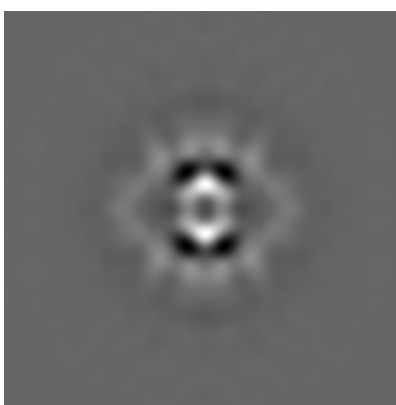
No raw map or half-maps were deposited for this entry and therefore no images, graphs, etc. pertaining to the raw map can be shown.

6.1 Orthogonal projections [i](#)

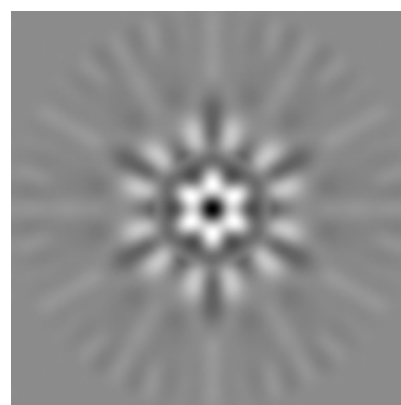
6.1.1 Primary map



X



Y

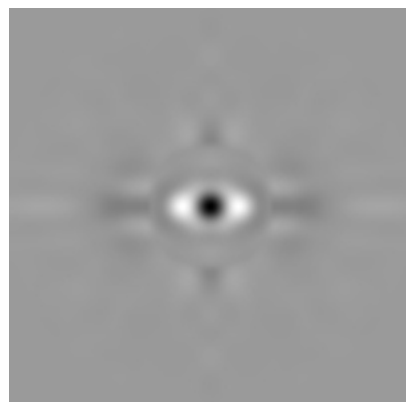


Z

The images above show the map projected in three orthogonal directions.

6.2 Central slices [i](#)

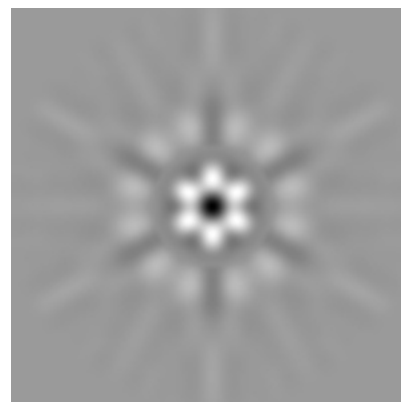
6.2.1 Primary map



X Index: 64



Y Index: 64

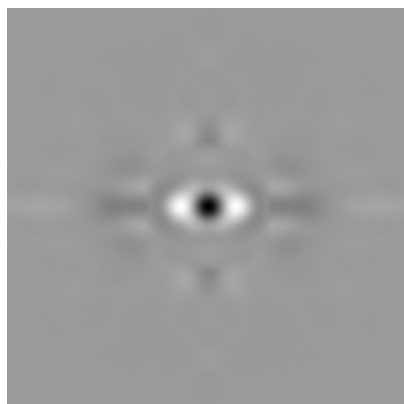


Z Index: 64

The images above show central slices of the map in three orthogonal directions.

6.3 Largest variance slices [i](#)

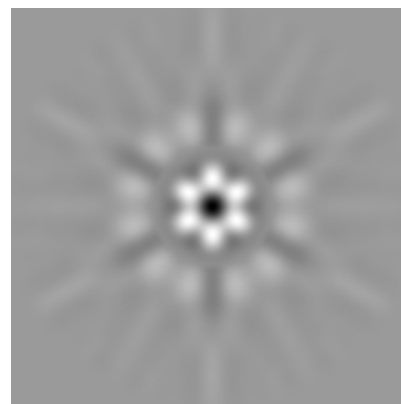
6.3.1 Primary map



X Index: 64



Y Index: 64



Z Index: 64

The images above show the largest variance slices of the map in three orthogonal directions.

6.4 Orthogonal surface views [i](#)

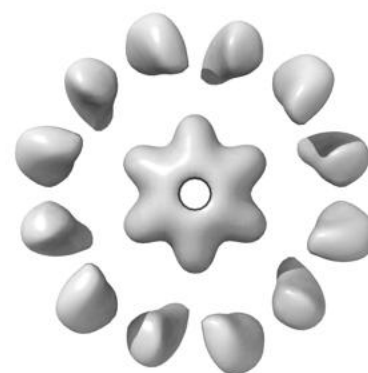
6.4.1 Primary map



X



Y



Z

The images above show the 3D surface view of the map at the recommended contour level 0.12. These images, in conjunction with the slice images, may facilitate assessment of whether an appropriate contour level has been provided.

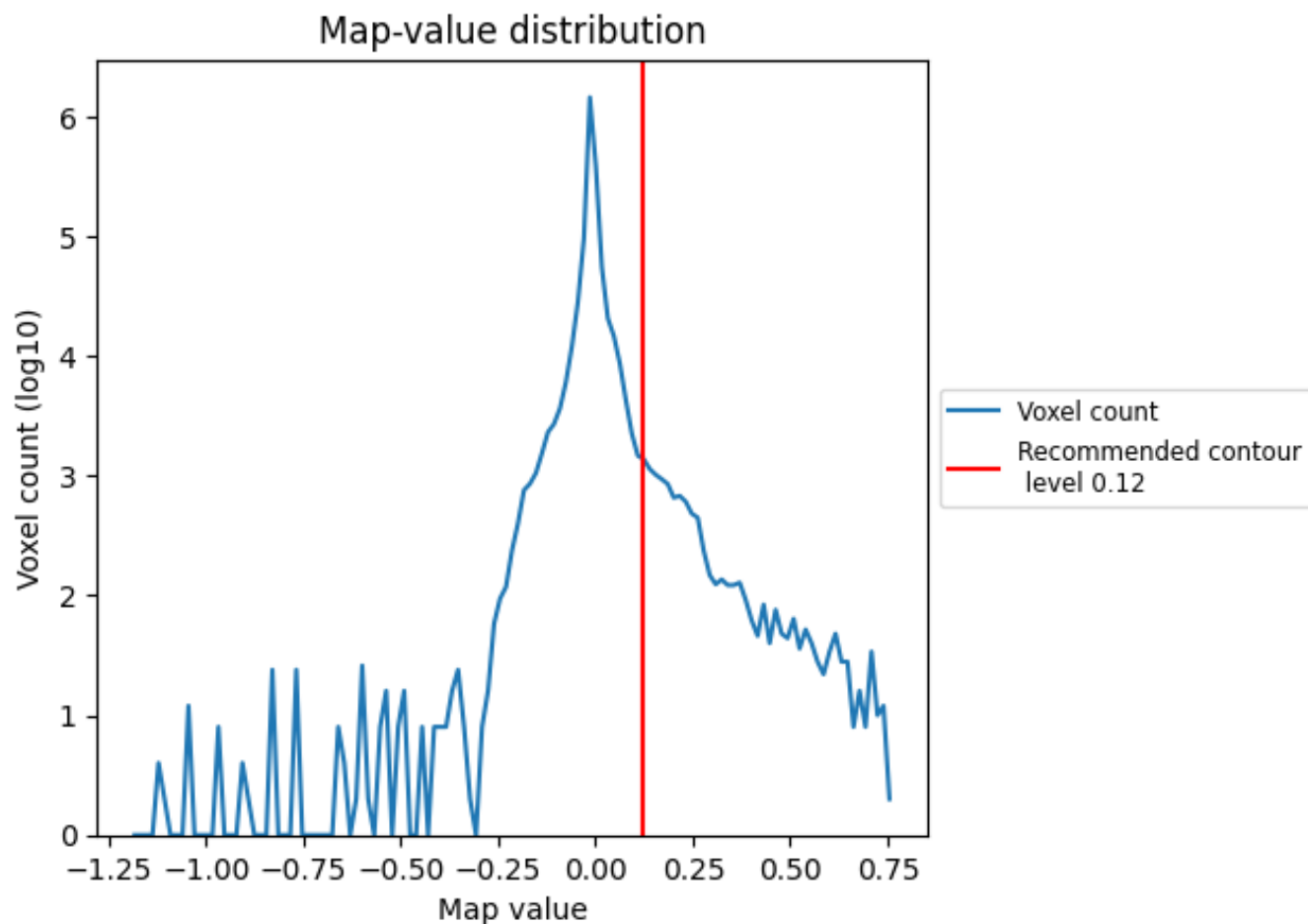
6.5 Mask visualisation

This section was not generated. No masks/segmentation were deposited.

7 Map analysis [i](#)

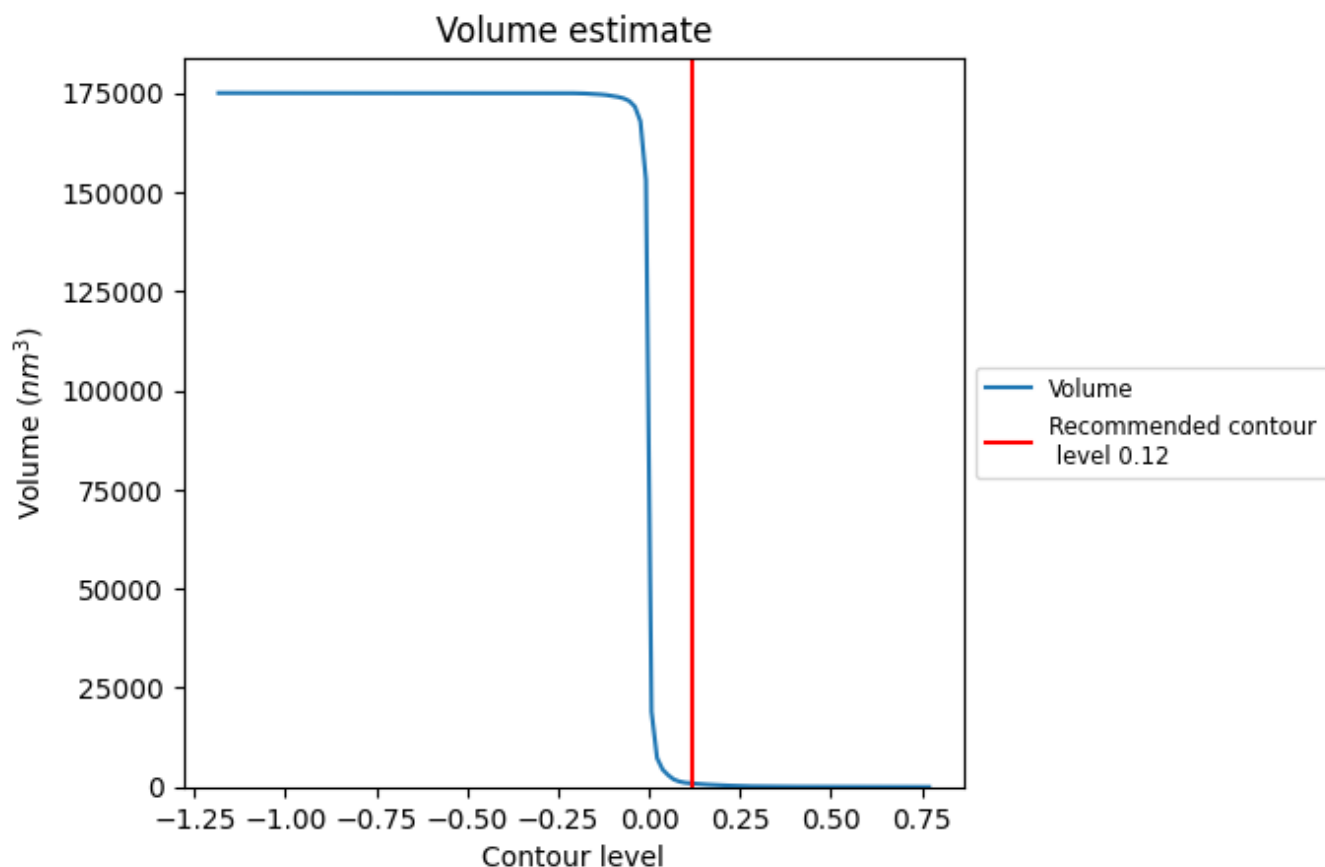
This section contains the results of statistical analysis of the map.

7.1 Map-value distribution [i](#)



The map-value distribution is plotted in 128 intervals along the x-axis. The y-axis is logarithmic. A spike in this graph at zero usually indicates that the volume has been masked.

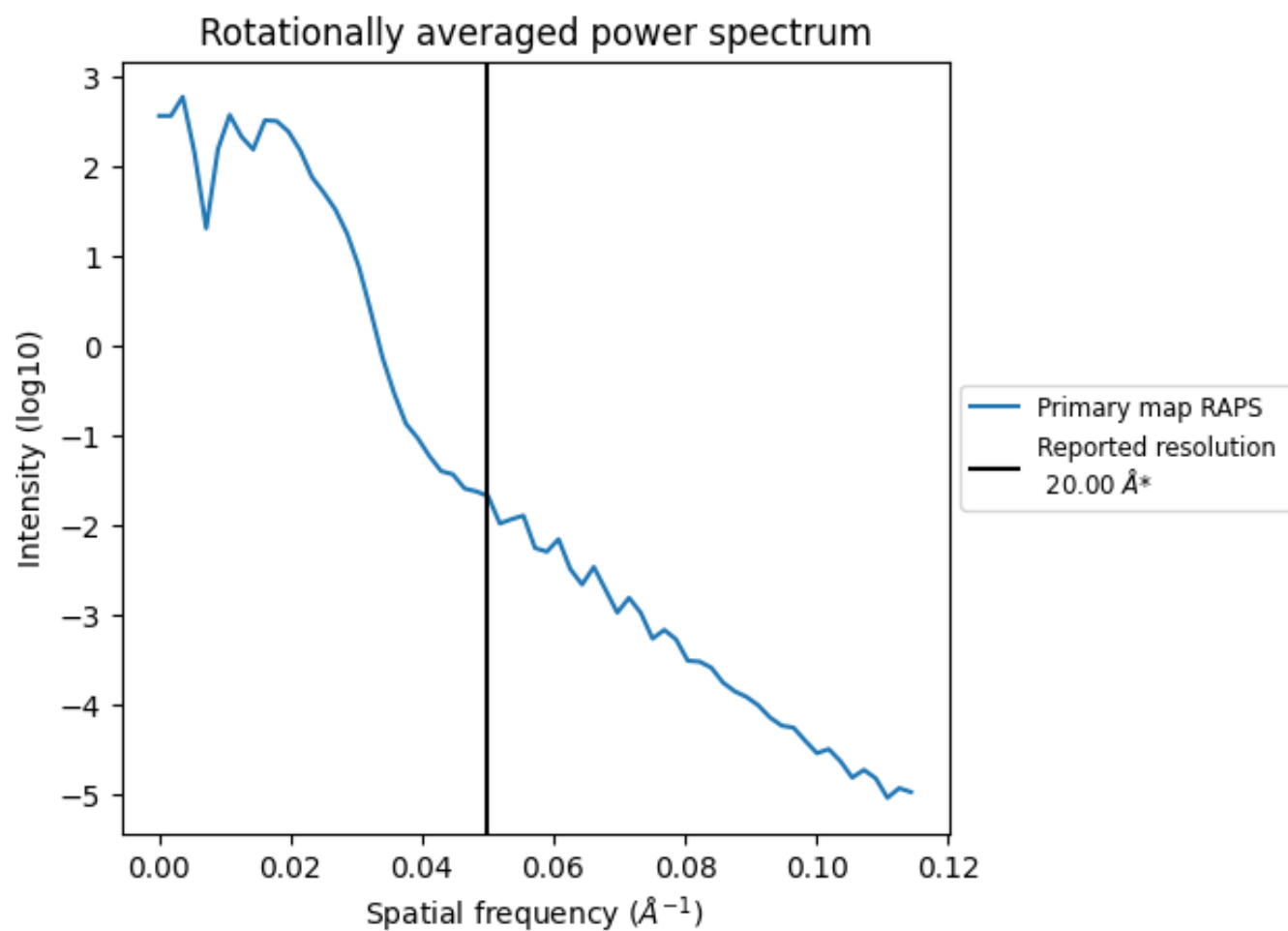
7.2 Volume estimate [i](#)



The volume at the recommended contour level is 880 nm^3 ; this corresponds to an approximate mass of 795 kDa.

The volume estimate graph shows how the enclosed volume varies with the contour level. The recommended contour level is shown as a vertical line and the intersection between the line and the curve gives the volume of the enclosed surface at the given level.

7.3 Rotationally averaged power spectrum ⓘ



*Reported resolution corresponds to spatial frequency of 0.050 Å⁻¹

8 Fourier-Shell correlation

This section was not generated. No FSC curve or half-maps provided.

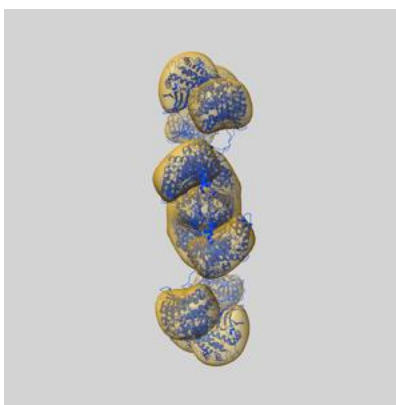
9 Map-model fit [i](#)

This section contains information regarding the fit between EMDB map EMD-8514 and PDB model 5U6Y. Per-residue inclusion information can be found in section [3](#) on page [6](#).

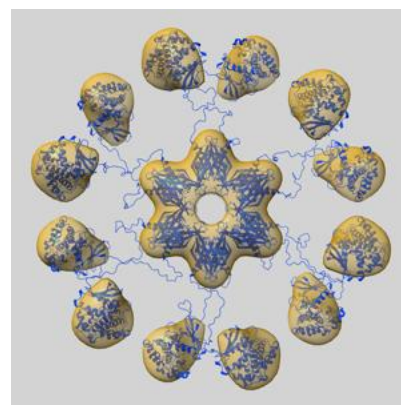
9.1 Map-model overlay [i](#)



X



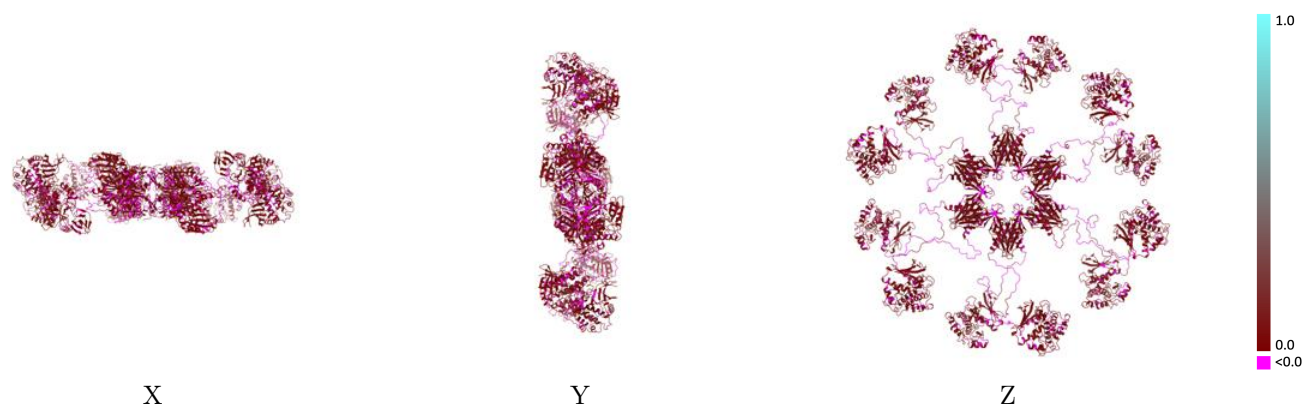
Y



Z

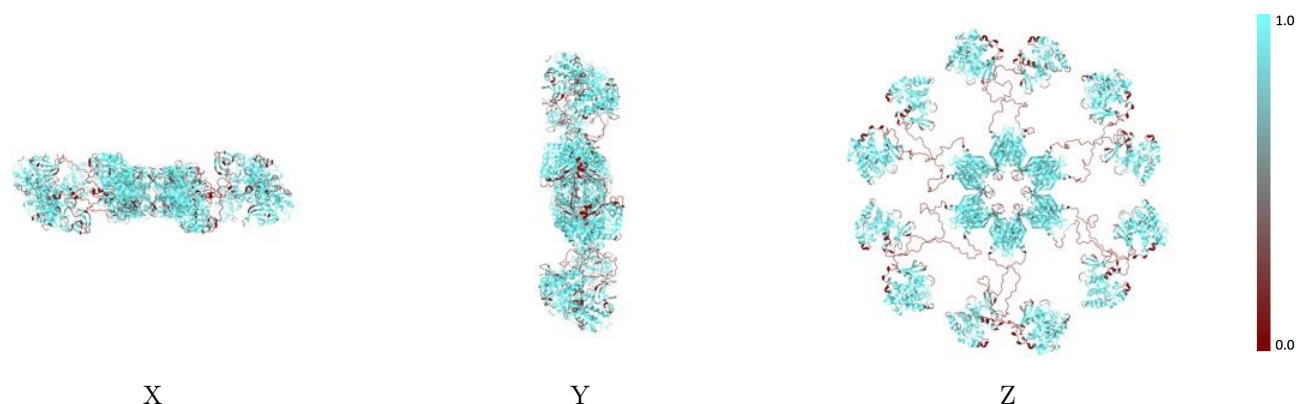
The images above show the 3D surface view of the map at the recommended contour level 0.12 at 50% transparency in yellow overlaid with a ribbon representation of the model coloured in blue. These images allow for the visual assessment of the quality of fit between the atomic model and the map.

9.2 Q-score mapped to coordinate model [i](#)



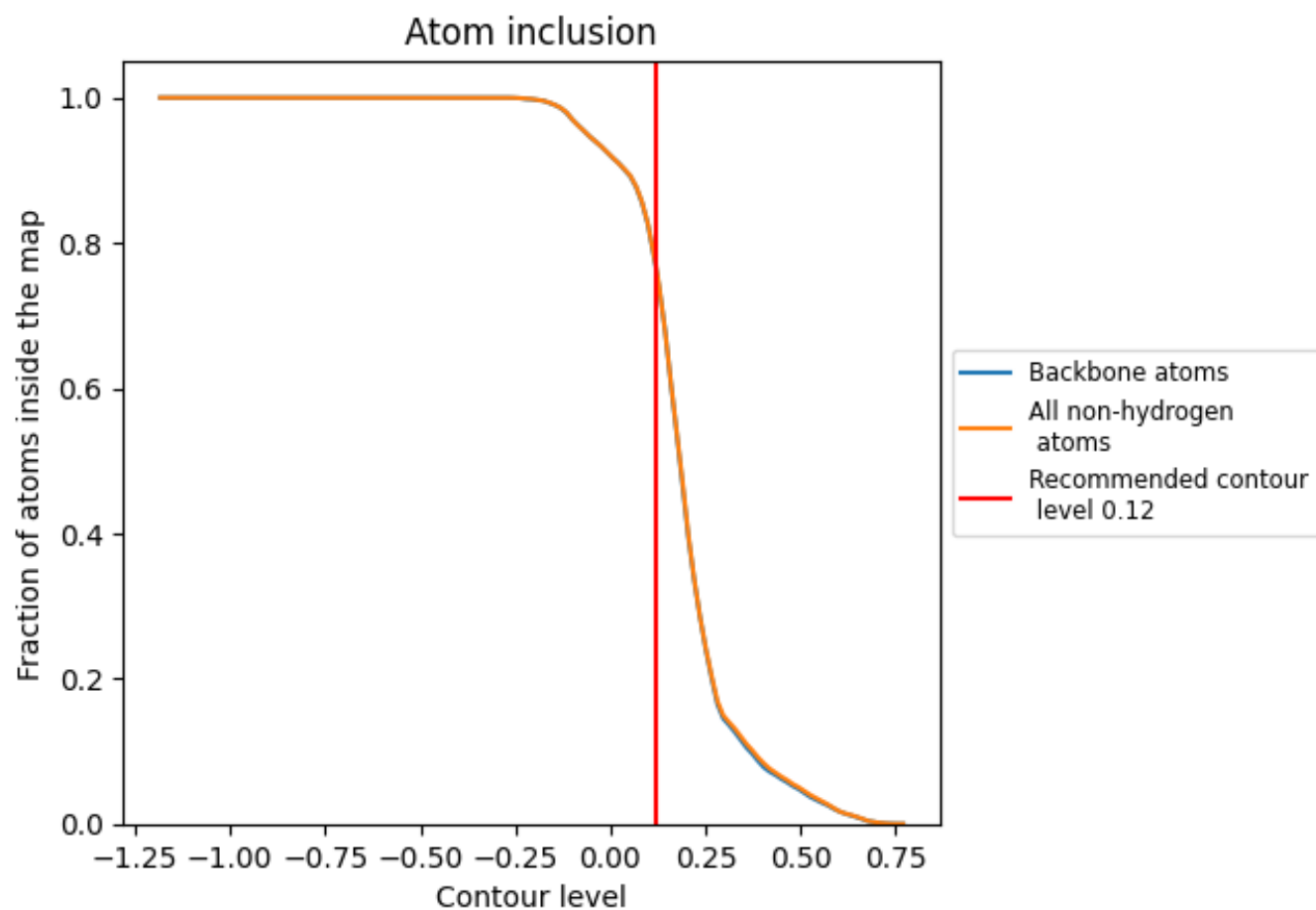
The images above show the model with each residue coloured according its Q-score. This shows their resolvability in the map with higher Q-score values reflecting better resolvability. Please note: Q-score is calculating the resolvability of atoms, and thus high values are only expected at resolutions at which atoms can be resolved. Low Q-score values may therefore be expected for many entries.

9.3 Atom inclusion mapped to coordinate model [i](#)



The images above show the model with each residue coloured according to its atom inclusion. This shows to what extent they are inside the map at the recommended contour level (0.12).



























9.4 Atom inclusion [i](#)



At the recommended contour level, 77% of all backbone atoms, 77% of all non-hydrogen atoms, are inside the map.

9.5 Map-model fit summary

The table lists the average atom inclusion at the recommended contour level (0.12) and Q-score for the entire model and for each chain.

Chain	Atom inclusion	Q-score
All	 0.7691	 0.0500
A	 0.7701	 0.0500
B	 0.7710	 0.0490
C	 0.7603	 0.0520
D	 0.7707	 0.0470
E	 0.7724	 0.0440
F	 0.7645	 0.0530
G	 0.7727	 0.0500
H	 0.7651	 0.0540
I	 0.7676	 0.0500
J	 0.7760	 0.0530
K	 0.7785	 0.0510
L	 0.7699	 0.0450

