



# Full wwPDB X-ray Structure Validation Report ⓘ

May 17, 2020 – 11:49 am BST

PDB ID : 6U9C  
Title : The 2.2 Å Crystal Structure of the Type B Chloramphenicol Acetyltransferase from *Vibrio cholerae* in the complex with Acetyl CoA  
Authors : Kim, Y.; Maltseva, N.; Stam, J.; Joachimiak, A.; Center for Structural Genomics of Infectious Diseases (CSGID)  
Deposited on : 2019-09-07  
Resolution : 2.20 Å(reported)

This is a Full wwPDB X-ray Structure Validation Report for a publicly released PDB entry.

We welcome your comments at [validation@mail.wwpdb.org](mailto:validation@mail.wwpdb.org)

A user guide is available at

<https://www.wwpdb.org/validation/2017/XrayValidationReportHelp>

with specific help available everywhere you see the ⓘ symbol.

---

The following versions of software and data (see [references ⓘ](#)) were used in the production of this report:

MolProbity : 4.02b-467  
Mogul : 1.8.5 (274361), CSD as541be (2020)  
Xtriage (Phenix) : 1.13  
EDS : 2.11  
buster-report : 1.1.7 (2018)  
Percentile statistics : 20191225.v01 (using entries in the PDB archive December 25th 2019)  
Refmac : 5.8.0158  
CCP4 : 7.0.044 (Gargrove)  
Ideal geometry (proteins) : Engh & Huber (2001)  
Ideal geometry (DNA, RNA) : Parkinson et al. (1996)  
Validation Pipeline (wwPDB-VP) : 2.11

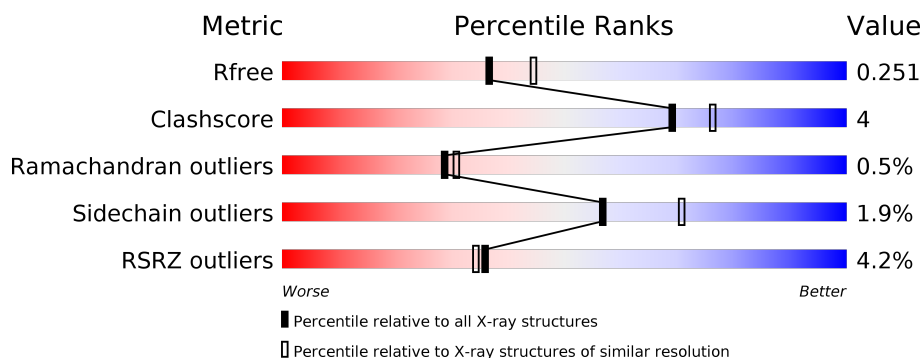
# 1 Overall quality at a glance

The following experimental techniques were used to determine the structure:

*X-RAY DIFFRACTION*

The reported resolution of this entry is 2.20 Å.

Percentile scores (ranging between 0-100) for global validation metrics of the entry are shown in the following graphic. The table shows the number of entries on which the scores are based.



Metric	Whole archive (#Entries)	Similar resolution (#Entries, resolution range(Å))
$R_{free}$	130704	4898 (2.20-2.20)
Clashscore	141614	5594 (2.20-2.20)
Ramachandran outliers	138981	5503 (2.20-2.20)
Sidechain outliers	138945	5504 (2.20-2.20)
RSRZ outliers	127900	4800 (2.20-2.20)

The table below summarises the geometric issues observed across the polymeric chains and their fit to the electron density. The red, orange, yellow and green segments on the lower bar indicate the fraction of residues that contain outliers for  $\geq 3$ , 2, 1 and 0 types of geometric quality criteria respectively. A grey segment represents the fraction of residues that are not modelled. The numeric value for each fraction is indicated below the corresponding segment, with a dot representing fractions  $\leq 5\%$ . The upper red bar (where present) indicates the fraction of residues that have poor fit to the electron density. The numeric value is given above the bar.

Mol	Chain	Length	Quality of chain
1	A	212	<div> <div>8%</div> <div> <div></div> <div>80%</div> <div>16%</div> <div>••</div> </div> </div>
1	B	212	<div> <div>4%</div> <div> <div></div> <div>91%</div> <div>8%</div> <div>•</div> </div> </div>
1	C	212	<div> <div>%</div> <div> <div></div> <div>93%</div> <div>5%</div> <div>•</div> </div> </div>

## 2 Entry composition

There are 7 unique types of molecules in this entry. The entry contains 5155 atoms, of which 0 are hydrogens and 0 are deuteriums.

In the tables below, the ZeroOcc column contains the number of atoms modelled with zero occupancy, the AltConf column contains the number of residues with at least one atom in alternate conformation and the Trace column contains the number of residues modelled with at most 2 atoms.

- Molecule 1 is a protein called Chloramphenicol acetyltransferase.

Mol	Chain	Residues	Atoms					ZeroOcc	AltConf	Trace
1	A	206	Total	C	N	O	S	0	0	0
			1634	1046	273	305	10			
1	B	209	Total	C	N	O	S	0	0	0
			1657	1059	279	309	10			
1	C	209	Total	C	N	O	S	0	0	0
			1660	1061	279	309	11			

There are 9 discrepancies between the modelled and reference sequences:

Chain	Residue	Modelled	Actual	Comment	Reference
A	-2	SER	-	expression tag	UNP Q9KMN1
A	-1	ASN	-	expression tag	UNP Q9KMN1
A	0	ALA	-	expression tag	UNP Q9KMN1
B	-2	SER	-	expression tag	UNP Q9KMN1
B	-1	ASN	-	expression tag	UNP Q9KMN1
B	0	ALA	-	expression tag	UNP Q9KMN1
C	-2	SER	-	expression tag	UNP Q9KMN1
C	-1	ASN	-	expression tag	UNP Q9KMN1
C	0	ALA	-	expression tag	UNP Q9KMN1

- Molecule 2 is CITRIC ACID (three-letter code: CIT) (formula: C<sub>6</sub>H<sub>8</sub>O<sub>7</sub>).

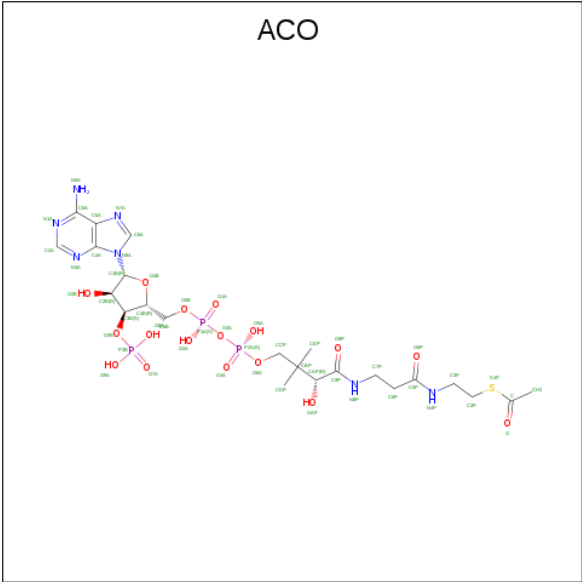


Mol	Chain	Residues	Atoms			ZeroOcc	AltConf
2	A	1	Total	C	O	0	0
			13	6	7		
2	C	1	Total	C	O	0	0
			13	6	7		

- Molecule 3 is CHLORIDE ION (three-letter code: CL) (formula: Cl).

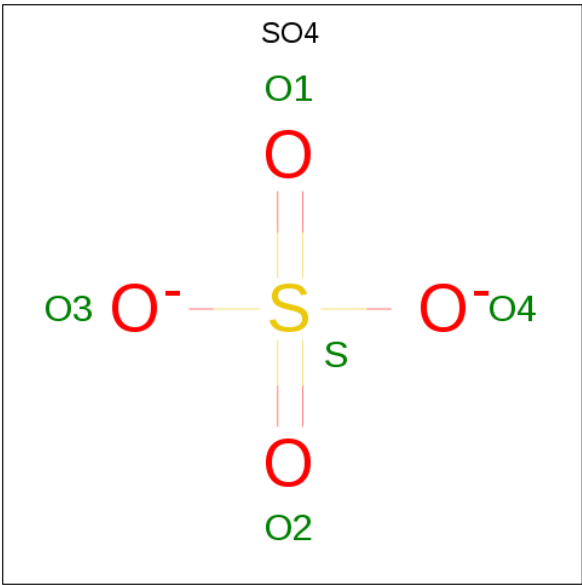
Mol	Chain	Residues	Atoms		ZeroOcc	AltConf
3	B	1	Total	Cl	0	0
			1	1		
3	A	1	Total	Cl	0	0
			1	1		

- Molecule 4 is ACETYL COENZYME \*A (three-letter code: ACO) (formula: C<sub>23</sub>H<sub>38</sub>N<sub>7</sub>O<sub>17</sub>P<sub>3</sub>S) (labeled as "Ligand of Interest" by author).



Mol	Chain	Residues	Atoms					ZeroOcc	AltConf
4	B	1	Total	C	N	O	P	0	0
			36	15	5	13	3		
4	B	1	Total	C	N	O	P	0	0
			41	17	6	15	3		
4	C	1	Total	C	N	O	P	0	0
			45	19	7	16	3		

- Molecule 5 is SULFATE ION (three-letter code: SO4) (formula: O<sub>4</sub>S).



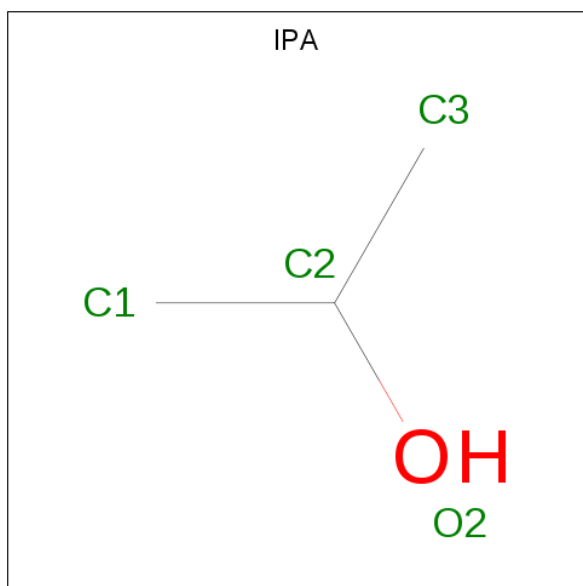
Mol	Chain	Residues	Atoms			ZeroOcc	AltConf
5	B	1	Total	O	S	0	0
			5	4	1		

Continued on next page...

Continued from previous page...

Mol	Chain	Residues	Atoms			ZeroOcc	AltConf
5	C	1	Total	O	S	0	0
			5	4	1		

- Molecule 6 is ISOPROPYL ALCOHOL (three-letter code: IPA) (formula:  $C_3H_8O$ ).



Mol	Chain	Residues	Atoms			ZeroOcc	AltConf
6	B	1	Total	C	O	0	0
			4	3	1		
6	C	1	Total	C	O	0	0
			4	3	1		

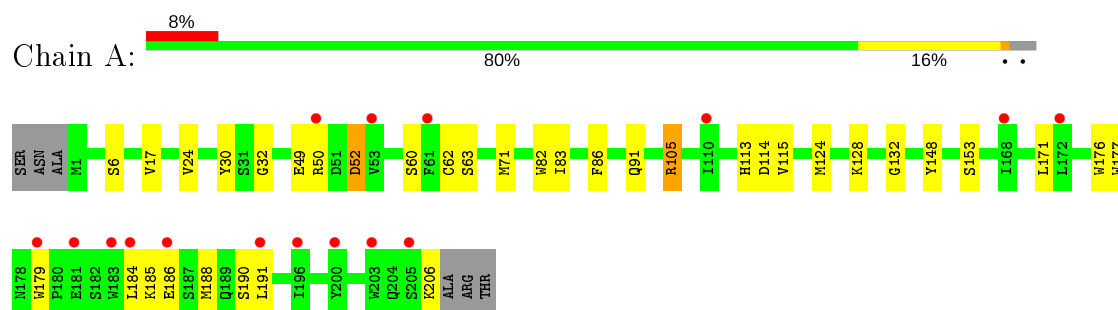
- Molecule 7 is water.

Mol	Chain	Residues	Atoms		ZeroOcc	AltConf
7	A	5	Total	O	0	0
			5	5		
7	B	21	Total	O	0	0
			21	21		
7	C	10	Total	O	0	0
			10	10		

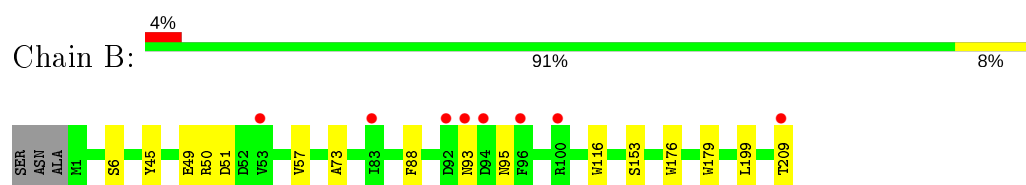
### 3 Residue-property plots [i](#)

These plots are drawn for all protein, RNA and DNA chains in the entry. The first graphic for a chain summarises the proportions of the various outlier classes displayed in the second graphic. The second graphic shows the sequence view annotated by issues in geometry and electron density. Residues are color-coded according to the number of geometric quality criteria for which they contain at least one outlier: green = 0, yellow = 1, orange = 2 and red = 3 or more. A red dot above a residue indicates a poor fit to the electron density ( $RSRZ > 2$ ). Stretches of 2 or more consecutive residues without any outlier are shown as a green connector. Residues present in the sample, but not in the model, are shown in grey.

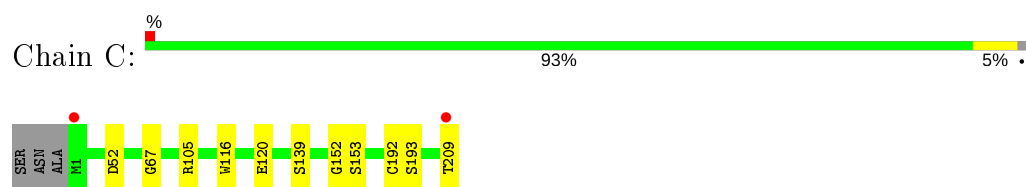
#### • Molecule 1: Chloramphenicol acetyltransferase



#### • Molecule 1: Chloramphenicol acetyltransferase



#### • Molecule 1: Chloramphenicol acetyltransferase



## 4 Data and refinement statistics

Property	Value	Source
Space group	P 31 2 1	Depositor
Cell constants a, b, c, $\alpha$ , $\beta$ , $\gamma$	101.23Å 101.23Å 126.18Å 90.00° 90.00° 120.00°	Depositor
Resolution (Å)	46.98 – 2.20 46.98 – 2.20	Depositor EDS
% Data completeness (in resolution range)	97.7 (46.98-2.20) 97.9 (46.98-2.20)	Depositor EDS
$R_{merge}$	0.11	Depositor
$R_{sym}$	(Not available)	Depositor
$\langle I/\sigma(I) \rangle$ <sup>1</sup>	2.48 (at 2.20Å)	Xtriage
Refinement program	PHENIX 1.13_2998	Depositor
R, $R_{free}$	0.206 , 0.251 0.206 , 0.251	Depositor DCC
$R_{free}$ test set	1753 reflections (4.66%)	wwPDB-VP
Wilson B-factor (Å <sup>2</sup> )	48.4	Xtriage
Anisotropy	0.674	Xtriage
Bulk solvent $k_{sol}$ (e/Å <sup>3</sup> ), $B_{sol}$ (Å <sup>2</sup> )	0.33 , 42.8	EDS
L-test for twinning <sup>2</sup>	$\langle  L  \rangle = 0.50$ , $\langle L^2 \rangle = 0.33$	Xtriage
Estimated twinning fraction	0.021 for -h,-k,l	Xtriage
$F_o, F_c$ correlation	0.96	EDS
Total number of atoms	5155	wwPDB-VP
Average B, all atoms (Å <sup>2</sup> )	70.0	wwPDB-VP

Xtriage's analysis on translational NCS is as follows: *The largest off-origin peak in the Patterson function is 11.08% of the height of the origin peak. No significant pseudotranslation is detected.*

<sup>1</sup>Intensities estimated from amplitudes.

<sup>2</sup>Theoretical values of  $\langle |L| \rangle$ ,  $\langle L^2 \rangle$  for acentric reflections are 0.5, 0.333 respectively for untwinned datasets, and 0.375, 0.2 for perfectly twinned datasets.



## 5 Model quality [i](#)

### 5.1 Standard geometry [i](#)

Bond lengths and bond angles in the following residue types are not validated in this section: IPA, ACO, SO4, CIT, CL

The Z score for a bond length (or angle) is the number of standard deviations the observed value is removed from the expected value. A bond length (or angle) with  $|Z| > 5$  is considered an outlier worth inspection. RMSZ is the root-mean-square of all Z scores of the bond lengths (or angles).

Mol	Chain	Bond lengths		Bond angles	
		RMSZ	# Z  >5	RMSZ	# Z  >5
1	A	0.36	0/1685	0.50	0/2288
1	B	0.38	0/1708	0.53	0/2319
1	C	0.39	0/1711	0.53	0/2322
All	All	0.38	0/5104	0.52	0/6929

There are no bond length outliers.

There are no bond angle outliers.

There are no chirality outliers.

There are no planarity outliers.

### 5.2 Too-close contacts [i](#)

In the following table, the Non-H and H(model) columns list the number of non-hydrogen atoms and hydrogen atoms in the chain respectively. The H(added) column lists the number of hydrogen atoms added and optimized by MolProbity. The Clashes column lists the number of clashes within the asymmetric unit, whereas Symm-Clashes lists symmetry related clashes.

Mol	Chain	Non-H	H(model)	H(added)	Clashes	Symm-Clashes
1	A	1634	0	1533	22	0
1	B	1657	0	1558	10	0
1	C	1660	0	1565	6	0
2	A	13	0	5	1	0
2	C	13	0	5	0	0
3	A	1	0	0	0	0
3	B	1	0	0	0	0
4	B	77	0	41	3	0
4	C	45	0	26	1	0
5	B	5	0	0	0	0

*Continued on next page...*

*Continued from previous page...*

Mol	Chain	Non-H	H(model)	H(added)	Clashes	Symm-Clashes
5	C	5	0	0	0	0
6	B	4	0	8	1	0
6	C	4	0	8	0	0
7	A	5	0	0	0	0
7	B	21	0	0	0	0
7	C	10	0	0	0	0
All	All	5155	0	4749	36	0

The all-atom clashscore is defined as the number of clashes found per 1000 atoms (including hydrogen atoms). The all-atom clashscore for this structure is 4.

All (36) close contacts within the same asymmetric unit are listed below, sorted by their clash magnitude.

Atom-1	Atom-2	Interatomic distance (Å)	Clash overlap (Å)
1:A:105:ARG:HG3	1:A:105:ARG:HH11	1.62	0.64
1:B:116:TRP:CH2	4:B:303:ACO:H131	2.34	0.62
1:A:188:MET:HE3	1:B:88:PHE:HB3	1.80	0.62
1:A:176:TRP:HA	1:A:179:TRP:CE2	2.36	0.60
1:A:62:CYS:SG	1:A:115:VAL:HG22	2.43	0.59
1:A:50:ARG:NH2	1:A:52:ASP:OD1	2.36	0.58
1:A:186:GLU:OE2	1:A:206:LYS:NZ	2.38	0.55
1:A:105:ARG:NH1	1:A:105:ARG:HG3	2.23	0.54
1:C:52:ASP:O	1:C:105:ARG:NH1	2.44	0.51
1:C:116:TRP:CZ2	4:C:301:ACO:H61	2.45	0.51
1:C:139:SER:OG	1:C:152:GLY:HA2	2.11	0.51
1:A:49:GLU:HG2	1:A:50:ARG:HG3	1.93	0.50
1:A:114:ASP:O	1:A:132:GLY:HA2	2.11	0.49
1:A:71:MET:HG3	1:A:124:MET:CE	2.42	0.49
1:B:51:ASP:N	1:B:51:ASP:OD1	2.43	0.49
1:A:17:VAL:HG21	1:A:24:VAL:HG11	1.96	0.47
1:A:148:TYR:CZ	1:A:171:LEU:HD23	2.50	0.47
1:B:116:TRP:HH2	4:B:303:ACO:H131	1.80	0.46
1:A:83:ILE:HG13	1:C:193:SER:O	2.16	0.45
1:B:57:VAL:HG11	6:B:305:IPA:H2	1.98	0.44
1:C:67:GLY:O	1:C:120:GLU:HA	2.18	0.43
2:A:301:CIT:O7	2:A:301:CIT:O2	2.35	0.43
4:B:303:ACO:O7A	4:B:303:ACO:O2B	2.32	0.43
1:B:199:LEU:HD12	1:B:199:LEU:HA	1.79	0.43
1:A:128:LYS:HB3	1:A:128:LYS:HE3	1.84	0.42
1:A:132:GLY:O	1:A:148:TYR:HA	2.18	0.42
1:A:184:LEU:HD23	1:A:184:LEU:HA	1.85	0.42

*Continued on next page...*

*Continued from previous page...*

Atom-1	Atom-2	Interatomic distance (Å)	Clash overlap (Å)
1:A:191:LEU:HA	1:A:191:LEU:HD23	1.83	0.42
1:B:176:TRP:HA	1:B:179:TRP:CE2	2.55	0.42
1:A:86:PHE:CZ	1:A:91:GLN:HG3	2.56	0.41
1:A:82:TRP:CZ3	1:C:192:CYS:HB3	2.56	0.41
1:A:113:HIS:CD2	1:A:177:TRP:CD1	3.08	0.41
1:B:49:GLU:HG2	1:B:50:ARG:HG3	2.02	0.41
1:B:45:TYR:O	1:B:73:ALA:HB2	2.20	0.41
1:A:30:TYR:CZ	1:A:32:GLY:HA3	2.55	0.41
1:A:185:LYS:HG2	1:B:95:ASN:CG	2.41	0.40

There are no symmetry-related clashes.

## 5.3 Torsion angles

### 5.3.1 Protein backbone

In the following table, the Percentiles column shows the percent Ramachandran outliers of the chain as a percentile score with respect to all X-ray entries followed by that with respect to entries of similar resolution.

The Analysed column shows the number of residues for which the backbone conformation was analysed, and the total number of residues.

Mol	Chain	Analysed	Favoured	Allowed	Outliers	Percentiles	
1	A	204/212 (96%)	196 (96%)	7 (3%)	1 (0%)	29	31
1	B	207/212 (98%)	199 (96%)	7 (3%)	1 (0%)	29	31
1	C	207/212 (98%)	201 (97%)	5 (2%)	1 (0%)	29	31
All	All	618/636 (97%)	596 (96%)	19 (3%)	3 (0%)	29	31

All (3) Ramachandran outliers are listed below:

Mol	Chain	Res	Type
1	A	153	SER
1	B	153	SER
1	C	153	SER

### 5.3.2 Protein sidechains ⓘ

In the following table, the Percentiles column shows the percent sidechain outliers of the chain as a percentile score with respect to all X-ray entries followed by that with respect to entries of similar resolution.

The Analysed column shows the number of residues for which the sidechain conformation was analysed, and the total number of residues.

Mol	Chain	Analysed	Rotameric	Outliers	Percentiles	
1	A	176/181 (97%)	170 (97%)	6 (3%)	37	47
1	B	178/181 (98%)	175 (98%)	3 (2%)	60	74
1	C	179/181 (99%)	178 (99%)	1 (1%)	86	93
All	All	533/543 (98%)	523 (98%)	10 (2%)	57	71

All (10) residues with a non-rotameric sidechain are listed below:

Mol	Chain	Res	Type
1	A	6	SER
1	A	52	ASP
1	A	60	SER
1	A	63	SER
1	A	105	ARG
1	A	190	SER
1	B	6	SER
1	B	93	ASN
1	B	209	THR
1	C	209	THR

Some sidechains can be flipped to improve hydrogen bonding and reduce clashes. All (2) such sidechains are listed below:

Mol	Chain	Res	Type
1	B	204	GLN
1	C	189	GLN

### 5.3.3 RNA ⓘ

There are no RNA molecules in this entry.

## 5.4 Non-standard residues in protein, DNA, RNA chains ⓘ

There are no non-standard protein/DNA/RNA residues in this entry.

## 5.5 Carbohydrates

There are no carbohydrates in this entry.

## 5.6 Ligand geometry

Of 11 ligands modelled in this entry, 2 are monoatomic - leaving 9 for Mogul analysis.

In the following table, the Counts columns list the number of bonds (or angles) for which Mogul statistics could be retrieved, the number of bonds (or angles) that are observed in the model and the number of bonds (or angles) that are defined in the Chemical Component Dictionary. The Link column lists molecule types, if any, to which the group is linked. The Z score for a bond length (or angle) is the number of standard deviations the observed value is removed from the expected value. A bond length (or angle) with  $|Z| > 2$  is considered an outlier worth inspection. RMSZ is the root-mean-square of all Z scores of the bond lengths (or angles).

Mol	Type	Chain	Res	Link	Bond lengths			Bond angles		
					Counts	RMSZ	# Z  > 2	Counts	RMSZ	# Z  > 2
5	SO4	B	304	-	4,4,4	0.16	0	6,6,6	0.10	0
4	ACO	B	301	-	33,38,53	0.88	1 (3%)	40,60,79	1.20	3 (7%)
4	ACO	C	301	-	39,47,53	0.84	1 (2%)	49,72,79	1.20	5 (10%)
2	CIT	C	302	-	3,12,12	1.38	0	3,17,17	2.00	2 (66%)
6	IPA	C	304	-	3,3,3	0.59	0	3,3,3	0.19	0
5	SO4	C	303	-	4,4,4	0.15	0	6,6,6	0.12	0
2	CIT	A	301	-	3,12,12	1.38	0	3,17,17	1.55	1 (33%)
6	IPA	B	305	-	3,3,3	0.57	0	3,3,3	0.27	0
4	ACO	B	303	-	35,43,53	0.94	1 (2%)	45,67,79	1.21	5 (11%)

In the following table, the Chirals column lists the number of chiral outliers, the number of chiral centers analysed, the number of these observed in the model and the number defined in the Chemical Component Dictionary. Similar counts are reported in the Torsion and Rings columns. '-' means no outliers of that kind were identified.

Mol	Type	Chain	Res	Link	Chirals	Torsions	Rings
4	ACO	C	301	-	-	13/40/60/67	0/3/3/3
4	ACO	B	303	-	-	10/36/56/67	0/3/3/3
2	CIT	A	301	-	-	6/6/16/16	-
2	CIT	C	302	-	-	4/6/16/16	-
4	ACO	B	301	-	-	4/24/44/67	0/3/3/3

All (3) bond length outliers are listed below:

Mol	Chain	Res	Type	Atoms	Z	Observed(Å)	Ideal(Å)
4	B	303	ACO	C5A-C4A	2.75	1.48	1.40
4	B	301	ACO	C5A-C4A	2.71	1.48	1.40
4	C	301	ACO	C5A-C4A	2.54	1.47	1.40

All (16) bond angle outliers are listed below:

Mol	Chain	Res	Type	Atoms	Z	Observed(°)	Ideal(°)
4	C	301	ACO	N3A-C2A-N1A	-3.10	123.83	128.68
4	B	301	ACO	P2A-O3A-P1A	-2.98	122.59	132.83
4	C	301	ACO	C4A-C5A-N7A	-2.96	106.31	109.40
4	B	301	ACO	C4A-C5A-N7A	-2.94	106.33	109.40
4	C	301	ACO	O4B-C1B-C2B	-2.86	102.75	106.93
4	B	303	ACO	C4A-C5A-N7A	-2.77	106.51	109.40
2	C	302	CIT	C3-C4-C5	-2.76	110.57	114.98
4	B	301	ACO	N3A-C2A-N1A	-2.70	124.45	128.68
4	B	303	ACO	N3A-C2A-N1A	-2.70	124.46	128.68
4	C	301	ACO	C7P-N8P-C9P	-2.53	118.08	122.59
2	A	301	CIT	C3-C2-C1	-2.37	111.19	114.98
4	B	303	ACO	CAP-C9P-N8P	2.22	117.77	116.32
4	C	301	ACO	P2A-O3A-P1A	-2.20	125.28	132.83
4	B	303	ACO	C3B-C2B-C1B	2.10	104.54	99.89
2	C	302	CIT	C3-C2-C1	-2.09	111.64	114.98
4	B	303	ACO	P2A-O3A-P1A	-2.05	125.80	132.83

There are no chirality outliers.

All (37) torsion outliers are listed below:

Mol	Chain	Res	Type	Atoms
4	B	301	ACO	CCP-O6A-P2A-O4A
4	B	301	ACO	CCP-O6A-P2A-O5A
4	C	301	ACO	C3B-C4B-C5B-O5B
4	C	301	ACO	C5B-O5B-P1A-O3A
4	C	301	ACO	CCP-O6A-P2A-O4A
4	C	301	ACO	CAP-C9P-N8P-C7P
2	A	301	CIT	C1-C2-C3-C6
2	A	301	CIT	C6-C3-C4-C5
4	B	303	ACO	C5B-O5B-P1A-O2A
4	B	303	ACO	OAP-CAP-CBP-CCP
4	B	303	ACO	C9P-CAP-CBP-CCP
4	B	303	ACO	OAP-CAP-CBP-CDP
4	B	303	ACO	C9P-CAP-CBP-CDP
4	B	303	ACO	OAP-CAP-CBP-CEP

*Continued on next page...*

*Continued from previous page...*

Mol	Chain	Res	Type	Atoms
4	B	303	ACO	C9P-CAP-CBP-CEP
4	C	301	ACO	O9P-C9P-N8P-C7P
4	C	301	ACO	O4B-C4B-C5B-O5B
2	A	301	CIT	O7-C3-C4-C5
4	C	301	ACO	O9P-C9P-CAP-OAP
2	A	301	CIT	C1-C2-C3-O7
2	A	301	CIT	C1-C2-C3-C4
2	A	301	CIT	C2-C3-C4-C5
2	C	302	CIT	C1-C2-C3-O7
4	B	303	ACO	C5B-O5B-P1A-O3A
4	B	301	ACO	CBP-CCP-O6A-P2A
4	C	301	ACO	C5B-O5B-P1A-O1A
4	C	301	ACO	CCP-O6A-P2A-O5A
4	B	303	ACO	C5B-O5B-P1A-O1A
2	C	302	CIT	C2-C3-C4-C5
2	C	302	CIT	O7-C3-C4-C5
2	C	302	CIT	C6-C3-C4-C5
4	C	301	ACO	O9P-C9P-CAP-CBP
4	C	301	ACO	N8P-C9P-CAP-CBP
4	B	301	ACO	CCP-O6A-P2A-O3A
4	C	301	ACO	CCP-O6A-P2A-O3A
4	C	301	ACO	CBP-CCP-O6A-P2A
4	B	303	ACO	C2B-C3B-O3B-P3B

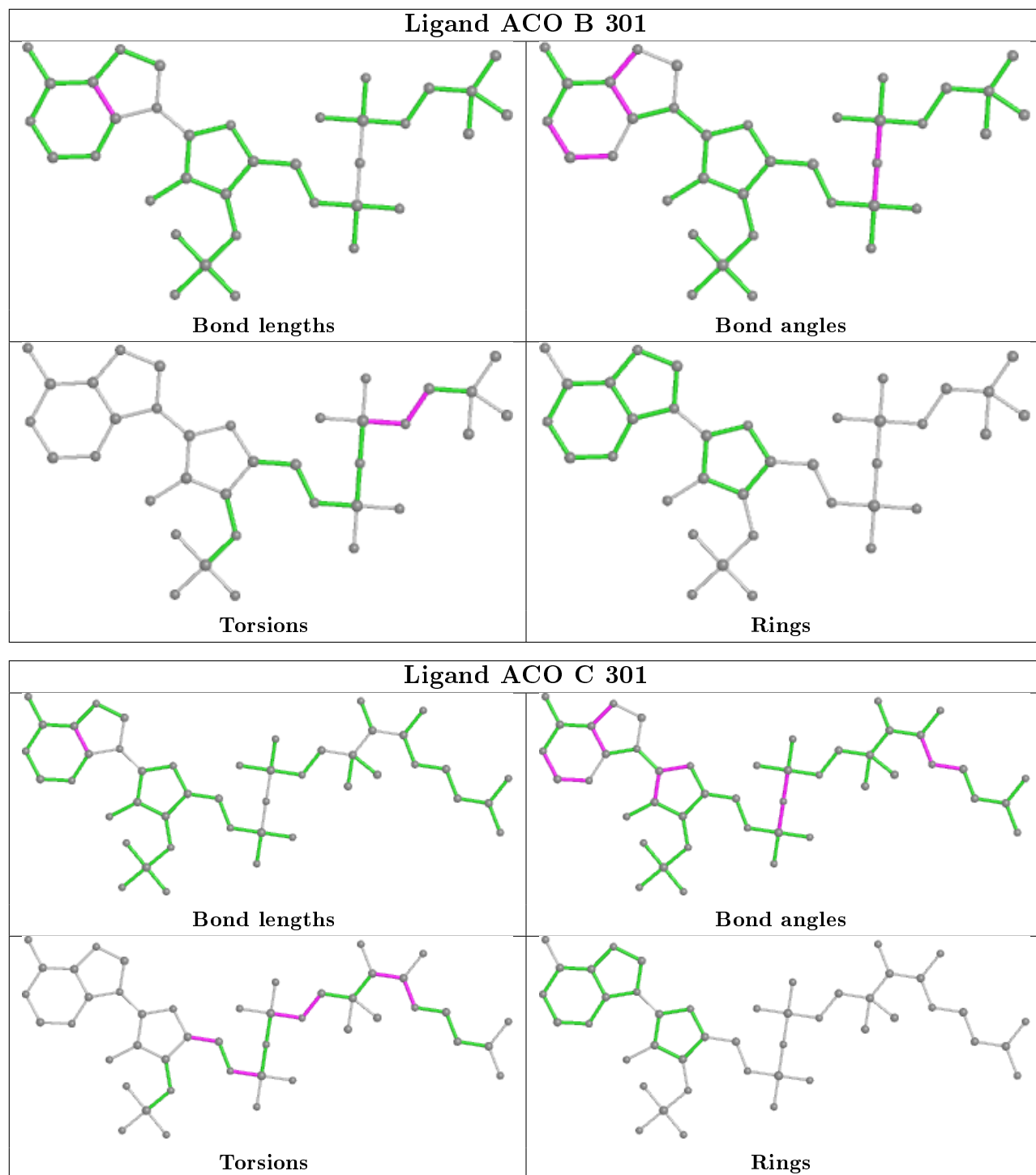
There are no ring outliers.

4 monomers are involved in 6 short contacts:

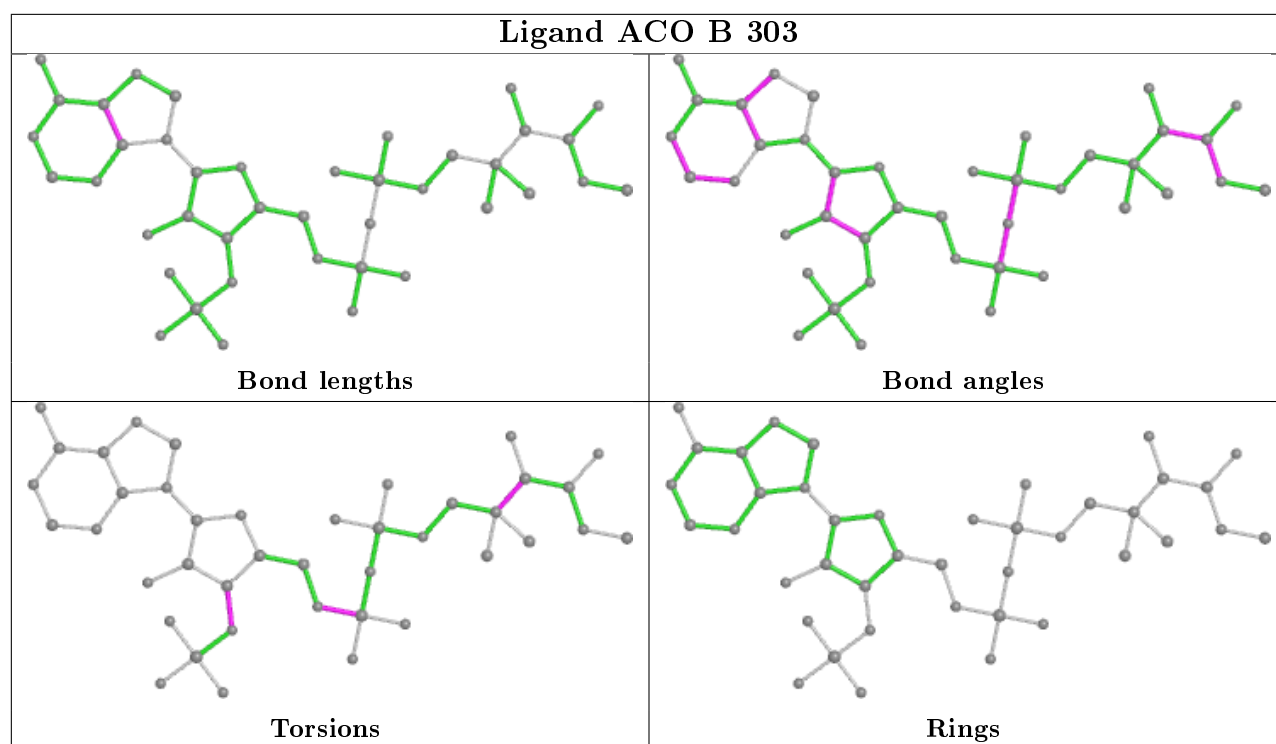
Mol	Chain	Res	Type	Clashes	Symm-Clashes
4	C	301	ACO	1	0
2	A	301	CIT	1	0
6	B	305	IPA	1	0
4	B	303	ACO	3	0

The following is a two-dimensional graphical depiction of Mogul quality analysis of bond lengths, bond angles, torsion angles, and ring geometry for all instances of the Ligand of Interest. In addition, ligands with molecular weight > 250 and outliers as shown on the validation Tables will also be included. For torsion angles, if less than 5% of the Mogul distribution of torsion angles is within 10 degrees of the torsion angle in question, then that torsion angle is considered an outlier. Any bond that is central to one or more torsion angles identified as an outlier by Mogul will be highlighted in the graph. For rings, the root-mean-square deviation (RMSD) between the ring in question and similar rings identified by Mogul is calculated over all ring torsion angles. If the average RMSD is greater than 60 degrees and the minimal RMSD between the ring in question and

any Mogul-identified rings is also greater than 60 degrees, then that ring is considered an outlier. The outliers are highlighted in purple. The color gray indicates Mogul did not find sufficient equivalents in the CSD to analyse the geometry.







## 5.7 Other polymers [i](#)

There are no such residues in this entry.

## 5.8 Polymer linkage issues [i](#)

There are no chain breaks in this entry.

## 6 Fit of model and data ⓘ

### 6.1 Protein, DNA and RNA chains ⓘ

In the following table, the column labelled ‘#RSRZ> 2’ contains the number (and percentage) of RSRZ outliers, followed by percent RSRZ outliers for the chain as percentile scores relative to all X-ray entries and entries of similar resolution. The OWAB column contains the minimum, median, 95<sup>th</sup> percentile and maximum values of the occupancy-weighted average B-factor per residue. The column labelled ‘Q< 0.9’ lists the number of (and percentage) of residues with an average occupancy less than 0.9.

Mol	Chain	Analysed	<RSRZ>	#RSRZ>2	OWAB(Å <sup>2</sup> )	Q<0.9
1	A	206/212 (97%)	0.43	16 (7%) 13 11	46, 78, 128, 155	0
1	B	209/212 (98%)	0.15	8 (3%) 40 38	42, 56, 104, 154	0
1	C	209/212 (98%)	0.07	2 (0%) 82 81	41, 54, 83, 115	0
All	All	624/636 (98%)	0.22	26 (4%) 36 34	41, 61, 117, 155	0

All (26) RSRZ outliers are listed below:

Mol	Chain	Res	Type	RSRZ
1	A	191	LEU	6.9
1	B	93	ASN	5.9
1	B	83	ILE	5.6
1	A	203	TRP	5.0
1	A	196	ILE	4.8
1	A	183	TRP	4.0
1	B	96	PHE	3.9
1	B	94	ASP	3.8
1	C	1	MET	3.6
1	A	205	SER	3.5
1	B	209	THR	3.4
1	A	200	TYR	3.3
1	C	209	THR	3.3
1	A	179	TRP	3.2
1	A	184	LEU	3.2
1	B	53	VAL	3.0
1	A	181	GLU	2.8
1	A	172	LEU	2.8
1	B	92	ASP	2.7
1	A	168	ILE	2.4
1	A	50	ARG	2.4
1	B	100	ARG	2.3
1	A	186	GLU	2.2

*Continued on next page...*

*Continued from previous page...*

Mol	Chain	Res	Type	RSRZ
1	A	110	ILE	2.1
1	A	53	VAL	2.1
1	A	61	PHE	2.0

## 6.2 Non-standard residues in protein, DNA, RNA chains [i](#)

There are no non-standard protein/DNA/RNA residues in this entry.

## 6.3 Carbohydrates [i](#)

There are no carbohydrates in this entry.

## 6.4 Ligands [i](#)

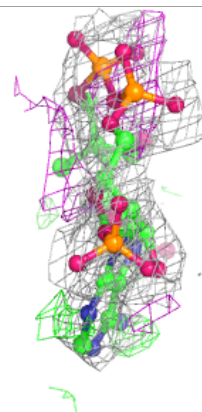
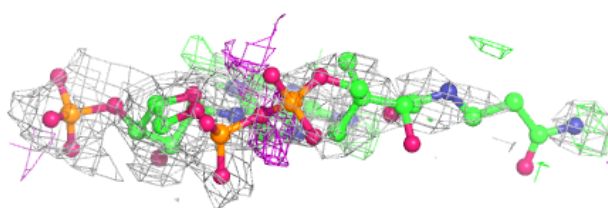
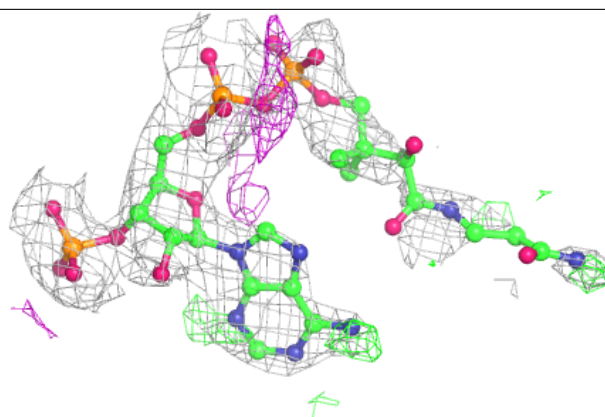
In the following table, the Atoms column lists the number of modelled atoms in the group and the number defined in the chemical component dictionary. The B-factors column lists the minimum, median, 95<sup>th</sup> percentile and maximum values of B factors of atoms in the group. The column labelled 'Q< 0.9' lists the number of atoms with occupancy less than 0.9.

Mol	Type	Chain	Res	Atoms	RSCC	RSR	B-factors(Å <sup>2</sup> )	Q<0.9
4	ACO	C	301	45/51	0.63	0.25	157,162,167,167	0
6	IPA	C	304	4/4	0.64	0.19	60,61,62,62	0
4	ACO	B	303	41/51	0.72	0.30	113,127,137,137	0
4	ACO	B	301	36/51	0.76	0.20	99,120,134,134	0
6	IPA	B	305	4/4	0.77	0.20	63,63,64,65	0
2	CIT	C	302	13/13	0.81	0.31	113,113,114,114	0
5	SO4	B	304	5/5	0.88	0.14	132,132,132,132	0
2	CIT	A	301	13/13	0.88	0.20	78,81,82,82	0
5	SO4	C	303	5/5	0.91	0.19	119,119,119,120	0
3	CL	B	302	1/1	0.98	0.25	89,89,89,89	0
3	CL	A	302	1/1	0.99	0.08	46,46,46,46	0

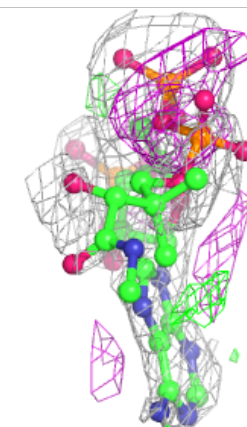
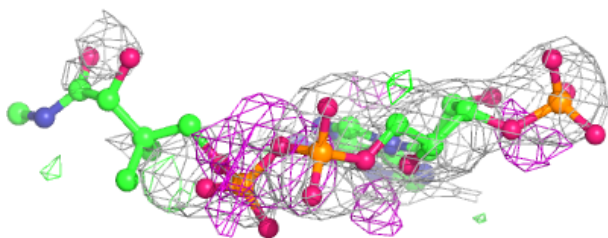
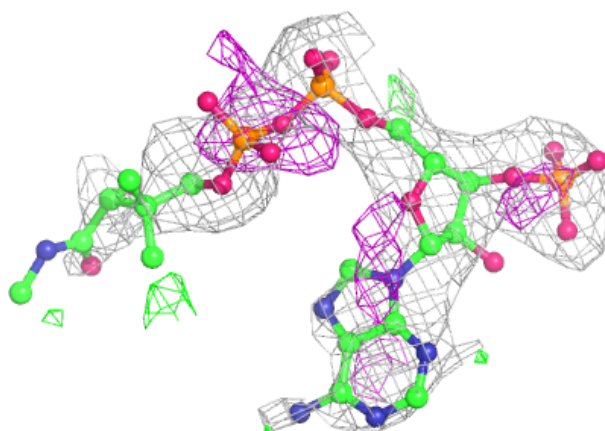
The following is a graphical depiction of the model fit to experimental electron density of all instances of the Ligand of Interest. In addition, ligands with molecular weight > 250 and outliers as shown on the geometry validation Tables will also be included. Each fit is shown from different orientation to approximate a three-dimensional view.

**Electron density around ACO C 301:**

$2mF_o-DF_c$  (at 0.7 rmsd) in gray  
 $mF_o-DF_c$  (at 3 rmsd) in purple (negative)  
and green (positive)

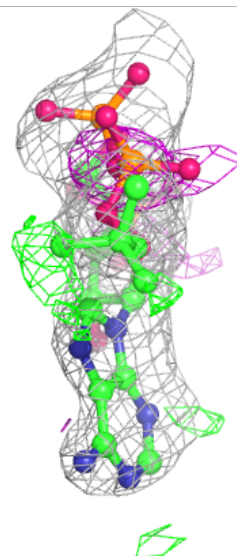
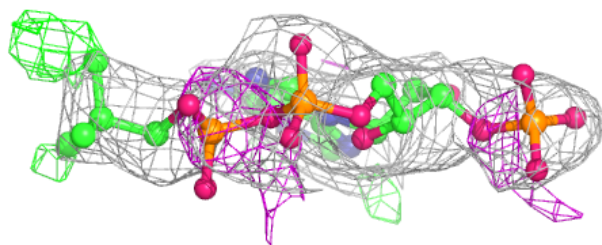
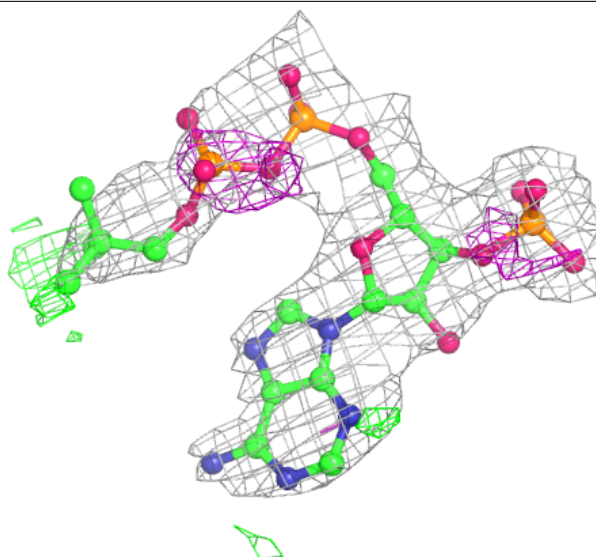
**Electron density around ACO B 303:**

$2mF_o-DF_c$  (at 0.7 rmsd) in gray  
 $mF_o-DF_c$  (at 3 rmsd) in purple (negative)  
and green (positive)



**Electron density around ACO B 301:**

$2mF_o-DF_c$  (at 0.7 rmsd) in gray  
 $mF_o-DF_c$  (at 3 rmsd) in purple (negative)  
and green (positive)



## 6.5 Other polymers ⓘ

There are no such residues in this entry.