



Full wwPDB X-ray Structure Validation Report ⓘ

May 25, 2020 – 02:36 pm BST

PDB ID : 5UAP
Title : Crystal Structure of CYP2B6 (Y226H/K262R) in complex with Bornyl Bromide
Authors : Shah, M.B.; Halpert, J.R.
Deposited on : 2016-12-19
Resolution : 2.03 Å(reported)

This is a Full wwPDB X-ray Structure Validation Report for a publicly released PDB entry.

We welcome your comments at validation@mail.wwpdb.org

A user guide is available at

<https://www.wwpdb.org/validation/2017/XrayValidationReportHelp>

with specific help available everywhere you see the ⓘ symbol.

The following versions of software and data (see [references ⓘ](#)) were used in the production of this report:

MolProbity : 4.02b-467
Mogul : 1.8.5 (274361), CSD as541be (2020)
Xtriage (Phenix) : 1.13
EDS : 2.11
buster-report : 1.1.7 (2018)
Percentile statistics : 20191225.v01 (using entries in the PDB archive December 25th 2019)
Refmac : 5.8.0158
CCP4 : 7.0.044 (Gargrove)
Ideal geometry (proteins) : Engh & Huber (2001)
Ideal geometry (DNA, RNA) : Parkinson et al. (1996)
Validation Pipeline (wwPDB-VP) : 2.11

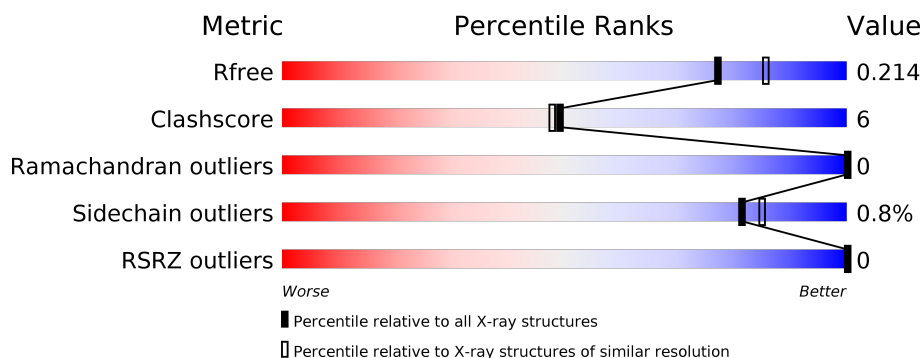
1 Overall quality at a glance

The following experimental techniques were used to determine the structure:

X-RAY DIFFRACTION

The reported resolution of this entry is 2.03 Å.

Percentile scores (ranging between 0-100) for global validation metrics of the entry are shown in the following graphic. The table shows the number of entries on which the scores are based.



Metric	Whole archive (#Entries)	Similar resolution (#Entries, resolution range(Å))
R_{free}	130704	10434 (2.04-2.00)
Clashscore	141614	11643 (2.04-2.00)
Ramachandran outliers	138981	11493 (2.04-2.00)
Sidechain outliers	138945	11492 (2.04-2.00)
RSRZ outliers	127900	10220 (2.04-2.00)

The table below summarises the geometric issues observed across the polymeric chains and their fit to the electron density. The red, orange, yellow and green segments on the lower bar indicate the fraction of residues that contain outliers for ≥ 3 , 2, 1 and 0 types of geometric quality criteria respectively. A grey segment represents the fraction of residues that are not modelled. The numeric value for each fraction is indicated below the corresponding segment, with a dot representing fractions $\leq 5\%$. The upper red bar (where present) indicates the fraction of residues that have poor fit to the electron density. The numeric value is given above the bar.

Mol	Chain	Length	Quality of chain
1	A	476	 88% 9% . .
1	B	476	 87% 9% . .

2 Entry composition

There are 5 unique types of molecules in this entry. The entry contains 8338 atoms, of which 0 are hydrogens and 0 are deuteriums.

In the tables below, the ZeroOcc column contains the number of atoms modelled with zero occupancy, the AltConf column contains the number of residues with at least one atom in alternate conformation and the Trace column contains the number of residues modelled with at most 2 atoms.

- Molecule 1 is a protein called Cytochrome P450 2B6.

Mol	Chain	Residues	Atoms					ZeroOcc	AltConf	Trace
1	A	464	Total	C	N	O	S	0	0	0
			3728	2415	637	660	16			
1	B	463	Total	C	N	O	S	0	1	0
			3727	2416	637	657	17			

There are 32 discrepancies between the modelled and reference sequences:

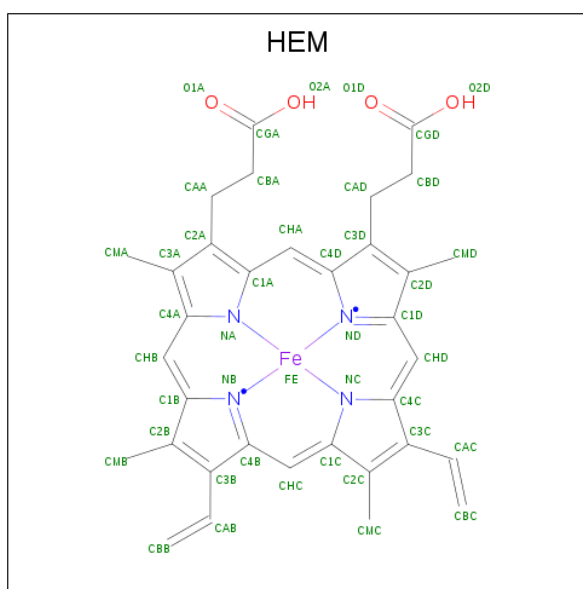
Chain	Residue	Modelled	Actual	Comment	Reference
A	20	MET	-	initiating methionine	UNP P20813
A	21	ALA	GLN	engineered mutation	UNP P20813
A	22	LYS	ARG	engineered mutation	UNP P20813
A	23	LYS	HIS	engineered mutation	UNP P20813
A	24	THR	PRO	engineered mutation	UNP P20813
A	25	SER	ASN	engineered mutation	UNP P20813
A	26	SER	THR	engineered mutation	UNP P20813
A	27	LYS	HIS	engineered mutation	UNP P20813
A	28	GLY	ASP	engineered mutation	UNP P20813
A	29	LYS	ARG	engineered mutation	UNP P20813
A	226	HIS	TYR	engineered mutation	UNP P20813
A	262	ARG	LYS	engineered mutation	UNP P20813
A	492	HIS	-	expression tag	UNP P20813
A	493	HIS	-	expression tag	UNP P20813
A	494	HIS	-	expression tag	UNP P20813
A	495	HIS	-	expression tag	UNP P20813
B	20	MET	-	initiating methionine	UNP P20813
B	21	ALA	GLN	engineered mutation	UNP P20813
B	22	LYS	ARG	engineered mutation	UNP P20813
B	23	LYS	HIS	engineered mutation	UNP P20813
B	24	THR	PRO	engineered mutation	UNP P20813
B	25	SER	ASN	engineered mutation	UNP P20813
B	26	SER	THR	engineered mutation	UNP P20813
B	27	LYS	HIS	engineered mutation	UNP P20813
B	28	GLY	ASP	engineered mutation	UNP P20813

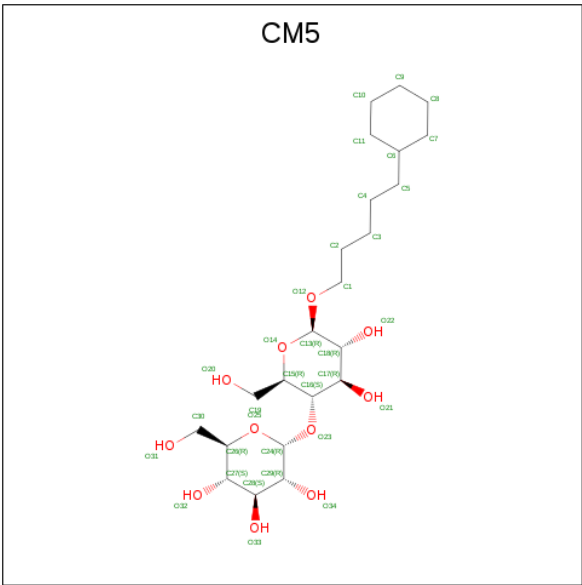
Continued on next page...

Continued from previous page...

Chain	Residue	Modelled	Actual	Comment	Reference
B	29	LYS	ARG	engineered mutation	UNP P20813
B	226	HIS	TYR	engineered mutation	UNP P20813
B	262	ARG	LYS	engineered mutation	UNP P20813
B	492	HIS	-	expression tag	UNP P20813
B	493	HIS	-	expression tag	UNP P20813
B	494	HIS	-	expression tag	UNP P20813
B	495	HIS	-	expression tag	UNP P20813

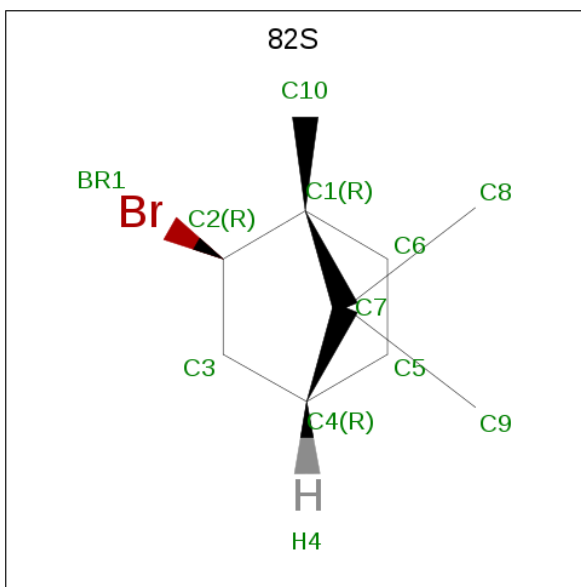
- Molecule 2 is PROTOPORPHYRIN IX CONTAINING FE (three-letter code: HEM) (formula: $C_{34}H_{32}FeN_4O_4$).





Mol	Chain	Residues	Atoms			ZeroOcc	AltConf
3	A	1	Total	C	O	0	0
			12	11	1		
3	A	1	Total	C	O	0	0
			34	23	11		
3	A	1	Total	C	O	0	0
			12	11	1		
3	B	1	Total	C	O	0	0
			12	11	1		
3	B	1	Total	C	O	0	0
			34	23	11		
3	B	1	Total	C	O	0	0
			12	11	1		

- Molecule 4 is (1R,2R,4R)-2-bromo-1,7,7-trimethylbicyclo[2.2.1]heptane (three-letter code: 82S) (formula: C₁₀H₁₇Br).



Mol	Chain	Residues	Atoms			ZeroOcc	AltConf
4	A	1	Total	Br	C	0	1
			22	2	20		
4	B	1	Total	Br	C	0	1
			22	2	20		

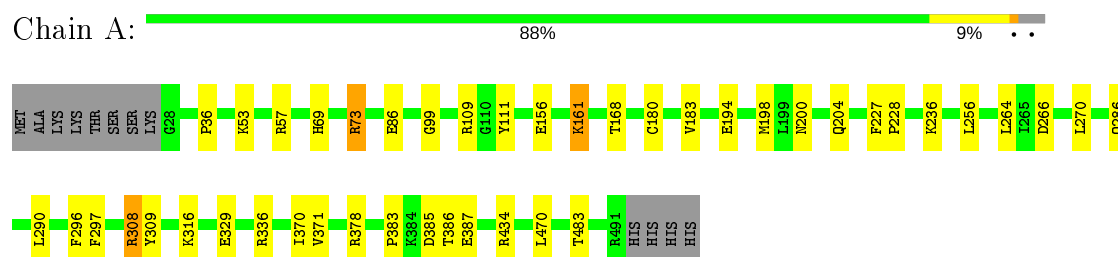
- Molecule 5 is water.

Mol	Chain	Residues	Atoms		ZeroOcc	AltConf
5	A	328	Total	O	0	0
			328	328		
5	B	309	Total	O	0	0
			309	309		

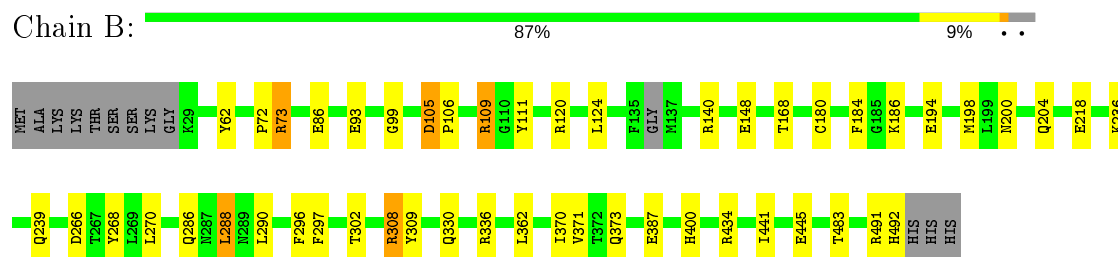
3 Residue-property plots [i](#)

These plots are drawn for all protein, RNA and DNA chains in the entry. The first graphic for a chain summarises the proportions of the various outlier classes displayed in the second graphic. The second graphic shows the sequence view annotated by issues in geometry and electron density. Residues are color-coded according to the number of geometric quality criteria for which they contain at least one outlier: green = 0, yellow = 1, orange = 2 and red = 3 or more. A red dot above a residue indicates a poor fit to the electron density ($RSRZ > 2$). Stretches of 2 or more consecutive residues without any outlier are shown as a green connector. Residues present in the sample, but not in the model, are shown in grey.

- Molecule 1: Cytochrome P450 2B6



- Molecule 1: Cytochrome P450 2B6



4 Data and refinement statistics

Property	Value	Source
Space group	P 32	Depositor
Cell constants a, b, c, α , β , γ	77.07 Å 77.07 Å 202.17 Å 90.00° 90.00° 120.00°	Depositor
Resolution (Å)	50.59 – 2.03 50.54 – 2.03	Depositor EDS
% Data completeness (in resolution range)	99.9 (50.59-2.03) 99.9 (50.54-2.03)	Depositor EDS
R_{merge}	0.14	Depositor
R_{sym}	0.14	Depositor
$\langle I/\sigma(I) \rangle$ ¹	2.66 (at 2.03 Å)	Xtriage
Refinement program	REFMAC 5.7.0029	Depositor
R, R_{free}	0.163 , 0.206 0.178 , 0.214	Depositor DCC
R_{free} test set	4325 reflections (5.01%)	wwPDB-VP
Wilson B-factor (Å ²)	25.1	Xtriage
Anisotropy	0.008	Xtriage
Bulk solvent k_{sol} (e/Å ³), B_{sol} (Å ²)	0.33 , 31.2	EDS
L-test for twinning ²	$\langle L \rangle = 0.45$, $\langle L^2 \rangle = 0.27$	Xtriage
Estimated twinning fraction	0.044 for -h,-k,l 0.478 for h,-h-k,-l 0.044 for -k,-h,-l	Xtriage
F_o, F_c correlation	0.96	EDS
Total number of atoms	8338	wwPDB-VP
Average B, all atoms (Å ²)	28.0	wwPDB-VP

Xtriage's analysis on translational NCS is as follows: *The largest off-origin peak in the Patterson function is 5.20% of the height of the origin peak. No significant pseudotranslation is detected.*

¹Intensities estimated from amplitudes.

²Theoretical values of $\langle |L| \rangle$, $\langle L^2 \rangle$ for acentric reflections are 0.5, 0.333 respectively for untwinned datasets, and 0.375, 0.2 for perfectly twinned datasets.

5 Model quality

5.1 Standard geometry

Bond lengths and bond angles in the following residue types are not validated in this section: HEM, CM5, 82S

The Z score for a bond length (or angle) is the number of standard deviations the observed value is removed from the expected value. A bond length (or angle) with $|Z| > 5$ is considered an outlier worth inspection. RMSZ is the root-mean-square of all Z scores of the bond lengths (or angles).

Mol	Chain	Bond lengths		Bond angles	
		RMSZ	$\# Z > 5$	RMSZ	$\# Z > 5$
1	A	0.97	2/3829 (0.1%)	0.99	10/5183 (0.2%)
1	B	0.98	3/3830 (0.1%)	0.98	10/5183 (0.2%)
All	All	0.97	5/7659 (0.1%)	0.98	20/10366 (0.2%)

All (5) bond length outliers are listed below:

Mol	Chain	Res	Type	Atoms	Z	Observed(Å)	Ideal(Å)
1	B	72	PRO	C-N	6.80	1.49	1.34
1	A	308	ARG	CD-NE	-6.05	1.36	1.46
1	A	434	ARG	CD-NE	-5.89	1.36	1.46
1	B	308	ARG	CD-NE	-5.75	1.36	1.46
1	B	434	ARG	CD-NE	-5.46	1.37	1.46

All (20) bond angle outliers are listed below:

Mol	Chain	Res	Type	Atoms	Z	Observed(°)	Ideal(°)
1	A	434	ARG	NE-CZ-NH2	-17.36	111.62	120.30
1	B	434	ARG	NE-CZ-NH2	-16.76	111.92	120.30
1	A	434	ARG	NE-CZ-NH1	12.10	126.35	120.30
1	A	308	ARG	NE-CZ-NH2	-11.99	114.30	120.30
1	B	434	ARG	NE-CZ-NH1	11.60	126.10	120.30
1	B	308	ARG	NE-CZ-NH2	-11.32	114.64	120.30
1	A	308	ARG	NE-CZ-NH1	11.03	125.82	120.30
1	B	308	ARG	NE-CZ-NH1	10.56	125.58	120.30
1	A	109	ARG	NE-CZ-NH1	9.97	125.29	120.30
1	B	336	ARG	NE-CZ-NH1	7.43	124.02	120.30
1	B	73	ARG	O-C-N	-7.43	106.98	121.10
1	A	109	ARG	NE-CZ-NH2	-7.21	116.69	120.30
1	A	336	ARG	NE-CZ-NH1	6.95	123.78	120.30
1	B	336	ARG	NE-CZ-NH2	-6.60	117.00	120.30

Continued on next page...

Continued from previous page...

Mol	Chain	Res	Type	Atoms	Z	Observed(°)	Ideal(°)
1	B	73	ARG	C-N-CD	6.36	141.75	128.40
1	A	336	ARG	NE-CZ-NH2	-5.82	117.39	120.30
1	A	73	ARG	O-C-N	-5.80	110.08	121.10
1	B	109	ARG	NE-CZ-NH1	5.62	123.11	120.30
1	A	73	ARG	C-N-CD	5.38	139.70	128.40
1	B	105	ASP	CB-CG-OD1	5.00	122.80	118.30

There are no chirality outliers.

There are no planarity outliers.

5.2 Too-close contacts ⓘ

In the following table, the Non-H and H(model) columns list the number of non-hydrogen atoms and hydrogen atoms in the chain respectively. The H(added) column lists the number of hydrogen atoms added and optimized by MolProbity. The Clashes column lists the number of clashes within the asymmetric unit, whereas Symm-Clashes lists symmetry related clashes.

Mol	Chain	Non-H	H(model)	H(added)	Clashes	Symm-Clashes
1	A	3728	0	3691	39	0
1	B	3727	0	3696	47	0
2	A	43	0	30	1	0
2	B	43	0	30	2	0
3	A	58	0	84	3	0
3	B	58	0	84	2	0
4	A	22	0	0	2	0
4	B	22	0	0	2	0
5	A	328	0	0	11	0
5	B	309	0	0	10	0
All	All	8338	0	7615	91	0

The all-atom clashscore is defined as the number of clashes found per 1000 atoms (including hydrogen atoms). The all-atom clashscore for this structure is 6.

All (91) close contacts within the same asymmetric unit are listed below, sorted by their clash magnitude.

Atom-1	Atom-2	Interatomic distance (Å)	Clash overlap (Å)
1:A:161:LYS:HD2	1:B:239:GLN:OE1	1.36	1.25
1:A:266:ASP:O	1:A:270:LEU:HD13	1.49	1.13
1:B:370:ILE:HD12	1:B:370:ILE:O	1.65	0.96
1:A:161:LYS:CD	1:B:239:GLN:OE1	2.20	0.88

Continued on next page...

Continued from previous page...

Atom-1	Atom-2	Interatomic distance (Å)	Clash overlap (Å)
1:B:120:ARG:O	1:B:124:LEU:HD13	1.75	0.86
1:A:194:GLU:HG3	5:A:604:HOH:O	1.73	0.86
1:A:194:GLU:OE2	5:A:601:HOH:O	1.96	0.84
4:B:505[A]:82S:BR1	4:B:505[A]:82S:C9	2.81	0.84
4:A:505[B]:82S:BR1	4:A:505[B]:82S:C9	2.82	0.83
4:A:505[A]:82S:C9	4:A:505[A]:82S:BR1	2.81	0.83
1:B:330:GLN:NE2	5:B:601:HOH:O	1.88	0.83
4:B:505[B]:82S:C9	4:B:505[B]:82S:BR1	2.81	0.82
1:A:73:ARG:HD2	1:A:387:GLU:OE1	1.79	0.81
1:A:370:ILE:O	1:A:370:ILE:HD12	1.82	0.80
1:B:73:ARG:HD2	1:B:387:GLU:OE1	1.82	0.79
3:A:503:CM5:O22	5:A:604:HOH:O	2.01	0.77
1:A:236:LYS:HE3	5:A:800:HOH:O	1.83	0.77
1:B:194:GLU:OE2	5:B:602:HOH:O	2.02	0.77
1:A:256:LEU:HD11	1:A:270:LEU:HD11	1.67	0.76
1:A:86:GLU:OE1	5:A:605:HOH:O	2.04	0.76
1:B:86:GLU:OE1	5:B:604:HOH:O	2.06	0.74
1:B:370:ILE:C	1:B:370:ILE:HD12	2.11	0.69
1:A:168:THR:OG1	1:A:308:ARG:HD3	1.94	0.68
1:B:168:THR:OG1	1:B:308:ARG:HD3	1.93	0.68
1:B:140:ARG:NH1	5:B:610:HOH:O	2.28	0.67
1:B:140:ARG:HD2	1:B:148:GLU:OE2	1.95	0.66
1:B:62:TYR:OH	5:B:606:HOH:O	2.11	0.64
1:B:370:ILE:CD1	1:B:370:ILE:O	2.41	0.63
1:B:180[B]:CYS:SG	1:B:186:LYS:O	2.56	0.63
1:A:370:ILE:C	1:A:370:ILE:HD12	2.22	0.60
1:A:371:VAL:HG21	1:A:383:PRO:O	2.00	0.60
1:A:198:MET:HG3	3:A:503:CM5:H41	1.82	0.60
1:B:236:LYS:HE3	5:B:799:HOH:O	2.01	0.59
1:B:491:ARG:O	1:B:492:HIS:CB	2.47	0.59
1:B:371:VAL:CG1	1:B:373:GLN:O	2.49	0.59
1:A:73:ARG:CD	1:A:387:GLU:OE1	2.49	0.57
1:B:73:ARG:CD	1:B:387:GLU:OE1	2.53	0.56
1:A:194:GLU:OE1	3:A:503:CM5:O22	2.22	0.56
1:A:99:GLY:CA	1:A:370:ILE:HG23	2.37	0.54
2:B:501:HEM:HBB2	2:B:501:HEM:HMB2	1.90	0.54
1:B:99:GLY:CA	1:B:370:ILE:HG23	2.38	0.53
1:B:99:GLY:N	1:B:370:ILE:HG23	2.24	0.53
1:A:256:LEU:HD11	1:A:270:LEU:CD1	2.38	0.53
1:B:99:GLY:CA	1:B:370:ILE:CG2	2.87	0.52
5:A:679:HOH:O	1:B:286:GLN:HG3	2.09	0.52

Continued on next page...

Continued from previous page...

Atom-1	Atom-2	Interatomic distance (Å)	Clash overlap (Å)
1:B:371:VAL:HG12	1:B:373:GLN:O	2.10	0.52
1:A:370:ILE:CD1	1:A:370:ILE:O	2.56	0.51
1:B:99:GLY:HA2	1:B:370:ILE:HG21	1.93	0.50
1:B:93:GLU:CB	5:B:771:HOH:O	2.59	0.50
1:B:194:GLU:HG3	5:B:880:HOH:O	2.10	0.50
1:B:200:ASN:O	1:B:204:GLN:HG2	2.11	0.50
1:B:400:HIS:HD2	5:B:898:HOH:O	1.93	0.50
1:B:111:TYR:HB2	1:B:290:LEU:HD12	1.94	0.50
1:B:198:MET:HG3	3:B:503:CM5:H41	1.94	0.50
1:B:266:ASP:O	1:B:270:LEU:HG	2.11	0.50
1:A:200:ASN:O	1:A:204:GLN:HG2	2.13	0.49
2:A:501:HEM:HMB2	2:A:501:HEM:HBB2	1.95	0.48
1:A:156:GLU:OE2	1:B:109:ARG:NH1	2.42	0.47
1:A:483:THR:HB	5:A:645:HOH:O	2.14	0.47
1:A:111:TYR:HB2	1:A:290:LEU:HD12	1.97	0.47
1:B:180[B]:CYS:SG	1:B:184:PHE:HD2	2.38	0.46
1:A:99:GLY:N	1:A:370:ILE:HG23	2.31	0.46
1:B:99:GLY:HA2	1:B:370:ILE:CG2	2.45	0.46
1:A:329:GLU:OE1	5:A:607:HOH:O	2.21	0.45
1:B:483:THR:HB	5:B:620:HOH:O	2.16	0.45
1:A:378:ARG:NH2	5:A:605:HOH:O	2.25	0.45
1:A:99:GLY:CA	1:A:370:ILE:CG2	2.95	0.44
1:A:73:ARG:NE	1:A:387:GLU:OE1	2.51	0.44
1:B:370:ILE:CD1	1:B:370:ILE:C	2.81	0.44
1:B:371:VAL:HG12	1:B:373:GLN:H	1.81	0.44
1:A:36:PRO:HG3	1:A:69:HIS:CE1	2.53	0.44
1:A:180:CYS:HG	1:A:296:PHE:HE1	1.62	0.43
1:B:105:ASP:N	1:B:106:PRO:CD	2.81	0.43
1:B:180[A]:CYS:HG	1:B:296:PHE:HE1	1.65	0.43
1:A:99:GLY:HA2	1:A:370:ILE:CG2	2.49	0.43
1:B:268:TYR:CE2	1:B:288:LEU:HB2	2.54	0.43
1:B:370:ILE:CG1	1:B:370:ILE:O	2.66	0.43
1:A:57:ARG:NH2	5:A:621:HOH:O	2.47	0.42
1:A:371:VAL:HG23	1:A:385:ASP:N	2.35	0.42
1:B:194:GLU:CD	3:B:503:CM5:H22	2.23	0.42
1:A:371:VAL:CG2	1:A:386:THR:H	2.33	0.41
1:A:286:GLN:NE2	5:A:602:HOH:O	1.98	0.41
2:B:501:HEM:HHD	2:B:501:HEM:HBC2	2.02	0.41
1:A:183:VAL:HA	1:A:264:LEU:HB3	2.03	0.41
1:B:124:LEU:HD12	1:B:124:LEU:N	2.36	0.41
1:A:227:PHE:HB3	1:A:228:PRO:HD2	2.03	0.41

Continued on next page...

Continued from previous page...

Atom-1	Atom-2	Interatomic distance (Å)	Clash overlap (Å)
1:B:73:ARG:NH2	1:B:218:GLU:OE2	2.54	0.41
1:A:316:LYS:HD3	1:A:470:LEU:HD11	2.03	0.40
1:A:53:LYS:HA	1:A:53:LYS:HD3	1.84	0.40
1:B:302:THR:HA	1:B:362:LEU:HD21	2.04	0.40
1:B:441:ILE:O	1:B:445:GLU:HG3	2.21	0.40

There are no symmetry-related clashes.

5.3 Torsion angles [i](#)

5.3.1 Protein backbone [i](#)

In the following table, the Percentiles column shows the percent Ramachandran outliers of the chain as a percentile score with respect to all X-ray entries followed by that with respect to entries of similar resolution.

The Analysed column shows the number of residues for which the backbone conformation was analysed, and the total number of residues.

Mol	Chain	Analysed	Favoured	Allowed	Outliers	Percentiles	
1	A	462/476 (97%)	448 (97%)	14 (3%)	0	100	100
1	B	460/476 (97%)	447 (97%)	13 (3%)	0	100	100
All	All	922/952 (97%)	895 (97%)	27 (3%)	0	100	100

There are no Ramachandran outliers to report.

5.3.2 Protein sidechains [i](#)

In the following table, the Percentiles column shows the percent sidechain outliers of the chain as a percentile score with respect to all X-ray entries followed by that with respect to entries of similar resolution.

The Analysed column shows the number of residues for which the sidechain conformation was analysed, and the total number of residues.

Mol	Chain	Analysed	Rotameric	Outliers	Percentiles	
1	A	399/418 (96%)	396 (99%)	3 (1%)	81	85
1	B	400/418 (96%)	397 (99%)	3 (1%)	81	85
All	All	799/836 (96%)	793 (99%)	6 (1%)	81	85

All (6) residues with a non-rotameric sidechain are listed below:

Mol	Chain	Res	Type
1	A	161	LYS
1	A	297	PHE
1	A	309	TYR
1	B	288	LEU
1	B	297	PHE
1	B	309	TYR

Some sidechains can be flipped to improve hydrogen bonding and reduce clashes. There are no such sidechains identified.

5.3.3 RNA [i](#)

There are no RNA molecules in this entry.

5.4 Non-standard residues in protein, DNA, RNA chains [i](#)

There are no non-standard protein/DNA/RNA residues in this entry.

5.5 Carbohydrates [i](#)

There are no carbohydrates in this entry.

5.6 Ligand geometry [i](#)

12 ligands are modelled in this entry.

In the following table, the Counts columns list the number of bonds (or angles) for which Mogul statistics could be retrieved, the number of bonds (or angles) that are observed in the model and the number of bonds (or angles) that are defined in the Chemical Component Dictionary. The Link column lists molecule types, if any, to which the group is linked. The Z score for a bond length (or angle) is the number of standard deviations the observed value is removed from the expected value. A bond length (or angle) with $|Z| > 2$ is considered an outlier worth inspection. RMSZ is the root-mean-square of all Z scores of the bond lengths (or angles).

Mol	Type	Chain	Res	Link	Bond lengths			Bond angles		
					Counts	RMSZ	$\# Z > 2$	Counts	RMSZ	$\# Z > 2$
4	82S	B	505[A]	-	11,12,12	1.17	1 (9%)	17,21,21	1.06	0
3	CM5	A	502	-	12,12,36	0.67	0	13,13,49	1.73	3 (23%)
3	CM5	B	504	-	12,12,36	0.31	0	13,13,49	0.90	0

Mol	Type	Chain	Res	Link	Bond lengths			Bond angles		
					Counts	RMSZ	# Z > 2	Counts	RMSZ	# Z > 2
2	HEM	A	501	1	27,50,50	1.07	2 (7%)	17,82,82	1.49	4 (23%)
4	82S	A	505[A]	-	11,12,12	1.17	1 (9%)	17,21,21	1.06	0
4	82S	A	505[B]	-	11,12,12	1.18	1 (9%)	17,21,21	1.06	0
2	HEM	B	501	1,5	27,50,50	1.27	2 (7%)	17,82,82	1.28	2 (11%)
3	CM5	A	504	-	12,12,36	0.28	0	13,13,49	1.07	2 (15%)
3	CM5	B	502	-	12,12,36	0.28	0	13,13,49	1.03	1 (7%)
3	CM5	A	503	-	36,36,36	0.71	0	49,49,49	1.67	10 (20%)
3	CM5	B	503	-	36,36,36	1.16	2 (5%)	49,49,49	2.33	10 (20%)
4	82S	B	505[B]	-	11,12,12	1.17	1 (9%)	17,21,21	1.06	0

In the following table, the Chirals column lists the number of chiral outliers, the number of chiral centers analysed, the number of these observed in the model and the number defined in the Chemical Component Dictionary. Similar counts are reported in the Torsion and Rings columns. '-' means no outliers of that kind were identified.

Mol	Type	Chain	Res	Link	Chirals	Torsions	Rings
4	82S	B	505[A]	-	-	-	0/3/2/2
3	CM5	A	502	-	-	1/6/14/65	0/1/1/3
3	CM5	B	504	-	-	1/6/14/65	0/1/1/3
2	HEM	A	501	1	-	0/6/54/54	-
4	82S	A	505[A]	-	-	-	0/3/2/2
4	82S	A	505[B]	-	-	-	0/3/2/2
2	HEM	B	501	1,5	-	0/6/54/54	-
3	CM5	A	504	-	-	5/6/14/65	0/1/1/3
3	CM5	B	502	-	-	0/6/14/65	0/1/1/3
3	CM5	A	503	-	-	3/17/65/65	0/3/3/3
3	CM5	B	503	-	-	2/17/65/65	0/3/3/3
4	82S	B	505[B]	-	-	-	0/3/2/2

All (10) bond length outliers are listed below:

Mol	Chain	Res	Type	Atoms	Z	Observed(Å)	Ideal(Å)
3	B	503	CM5	O23-C24	5.06	1.56	1.41
2	B	501	HEM	C3B-C2B	-3.84	1.35	1.40
4	A	505[B]	82S	C1-C7	-3.44	1.49	1.56
4	A	505[A]	82S	C1-C7	-3.43	1.49	1.56
4	B	505[A]	82S	C1-C7	-3.43	1.49	1.56
4	B	505[B]	82S	C1-C7	-3.42	1.49	1.56
2	A	501	HEM	C3B-C2B	-2.57	1.36	1.40

Continued on next page...

Continued from previous page...

Mol	Chain	Res	Type	Atoms	Z	Observed(Å)	Ideal(Å)
2	A	501	HEM	C4D-C3D	2.47	1.48	1.42
3	B	503	CM5	O23-C16	-2.37	1.37	1.43
2	B	501	HEM	C4B-CHC	-2.34	1.34	1.41

All (32) bond angle outliers are listed below:

Mol	Chain	Res	Type	Atoms	Z	Observed(°)	Ideal(°)
3	B	503	CM5	O23-C24-C29	-9.66	83.08	108.10
3	B	503	CM5	C24-O23-C16	6.84	134.90	117.96
3	A	503	CM5	O23-C24-O25	6.02	127.50	110.67
3	B	503	CM5	C24-O25-C26	5.67	124.81	113.69
3	A	502	CM5	C10-C11-C6	4.02	119.75	112.15
3	A	503	CM5	C8-C7-C6	3.78	119.30	112.15
3	B	503	CM5	O25-C24-C29	3.75	118.29	110.35
3	B	503	CM5	O23-C16-C17	3.66	117.01	107.28
3	A	502	CM5	C8-C7-C6	3.43	118.63	112.15
2	B	501	HEM	C3C-C4C-NC	-3.01	105.26	110.94
3	B	503	CM5	C9-C8-C7	2.86	117.25	111.42
2	A	501	HEM	CMA-C3A-C4A	-2.86	124.07	128.46
2	A	501	HEM	CBD-CAD-C3D	-2.85	107.22	112.48
3	A	503	CM5	O23-C16-C17	-2.78	99.89	107.28
3	A	503	CM5	C10-C11-C6	2.65	117.16	112.15
3	A	503	CM5	C24-O23-C16	2.40	123.89	117.96
2	A	501	HEM	CMC-C2C-C3C	2.37	129.10	124.68
3	A	503	CM5	C9-C10-C11	2.33	116.18	111.42
3	A	503	CM5	C11-C6-C7	2.31	114.99	109.33
2	A	501	HEM	C3C-C4C-NC	-2.28	106.65	110.94
3	A	503	CM5	O22-C18-C17	-2.26	105.12	110.35
2	B	501	HEM	CBD-CAD-C3D	-2.26	108.31	112.48
3	A	503	CM5	O14-C15-C19	2.23	111.97	106.44
3	B	503	CM5	O22-C18-C17	2.22	115.48	110.35
3	B	502	CM5	C8-C7-C6	2.22	116.34	112.15
3	A	502	CM5	C10-C9-C8	-2.20	104.39	111.18
3	B	503	CM5	O32-C27-C28	-2.20	105.27	110.35
3	B	503	CM5	C29-C28-C27	2.18	114.62	110.82
3	A	504	CM5	C10-C11-C6	-2.12	108.14	112.15
3	A	504	CM5	C9-C10-C11	-2.07	107.19	111.42
3	B	503	CM5	O14-C15-C19	2.07	111.58	106.44
3	A	503	CM5	O32-C27-C28	-2.04	105.64	110.35

There are no chirality outliers.

All (12) torsion outliers are listed below:

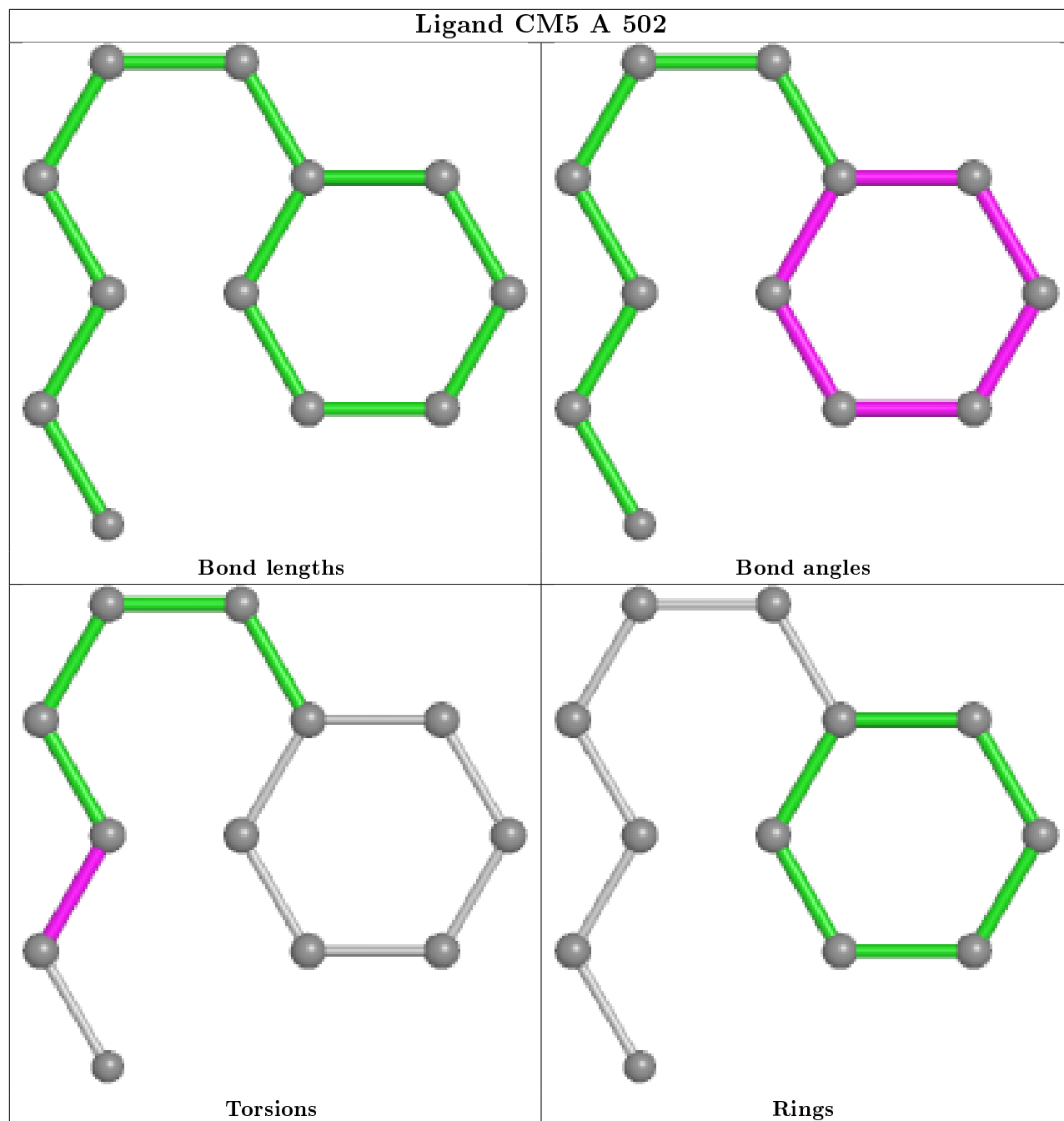
Mol	Chain	Res	Type	Atoms
3	A	504	CM5	C4-C5-C6-C11
3	B	503	CM5	C4-C5-C6-C7
3	A	504	CM5	C4-C5-C6-C7
3	A	502	CM5	O12-C1-C2-C3
3	B	504	CM5	C2-C3-C4-C5
3	A	504	CM5	O12-C1-C2-C3
3	B	503	CM5	C3-C4-C5-C6
3	A	503	CM5	O25-C24-O23-C16
3	A	503	CM5	O25-C26-C30-O31
3	A	503	CM5	C3-C4-C5-C6
3	A	504	CM5	C2-C3-C4-C5
3	A	504	CM5	C1-C2-C3-C4

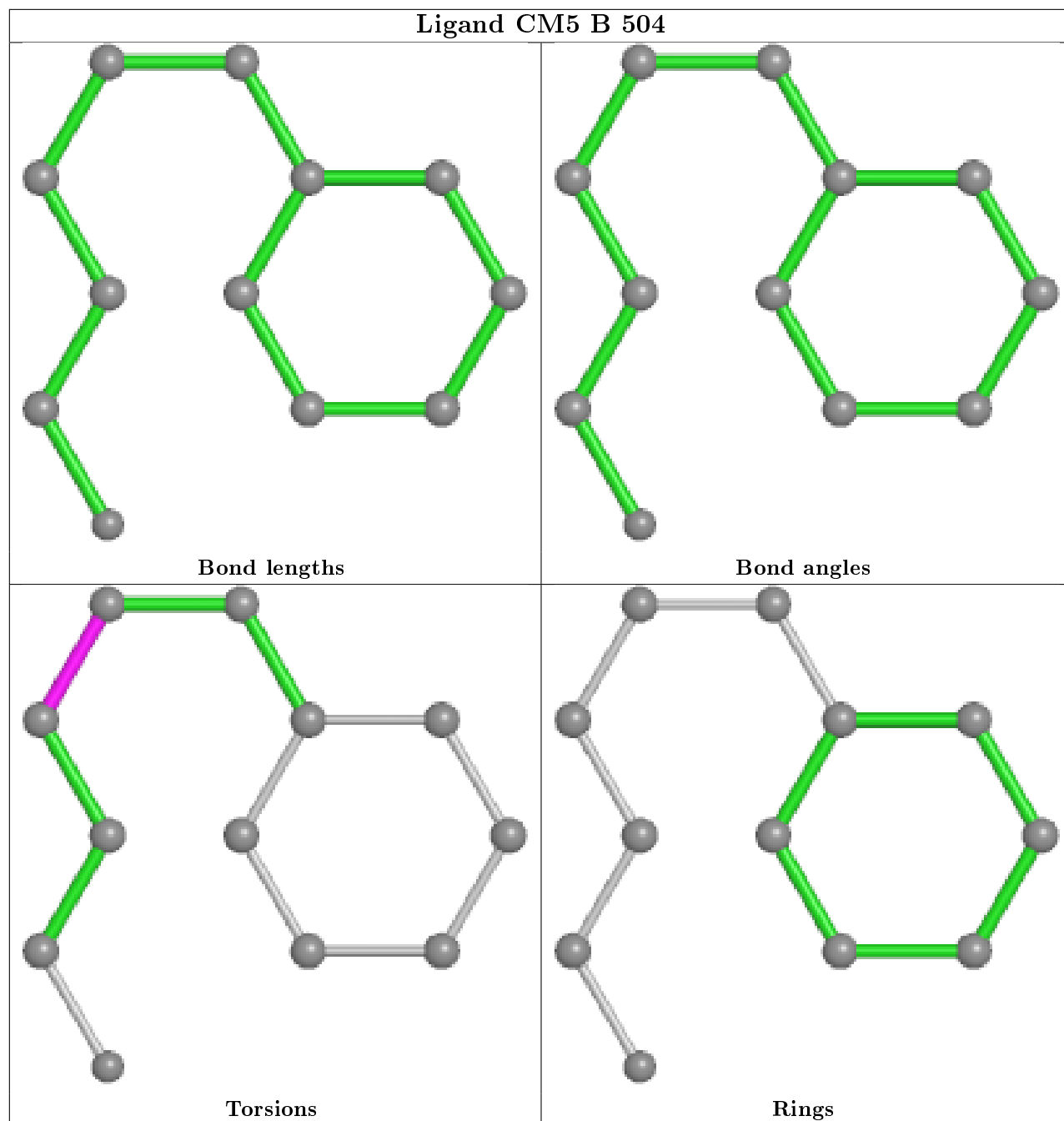
There are no ring outliers.

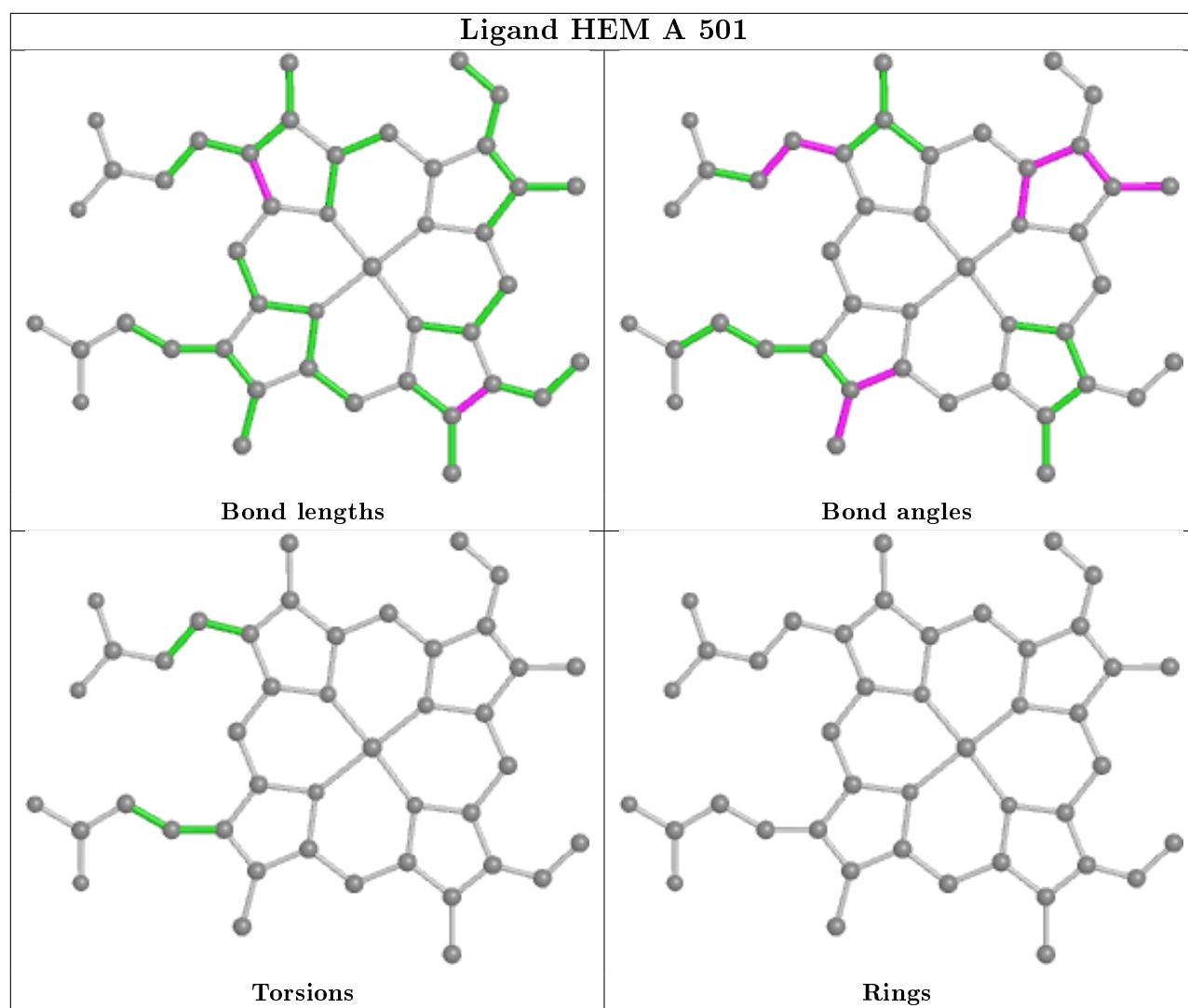
8 monomers are involved in 12 short contacts:

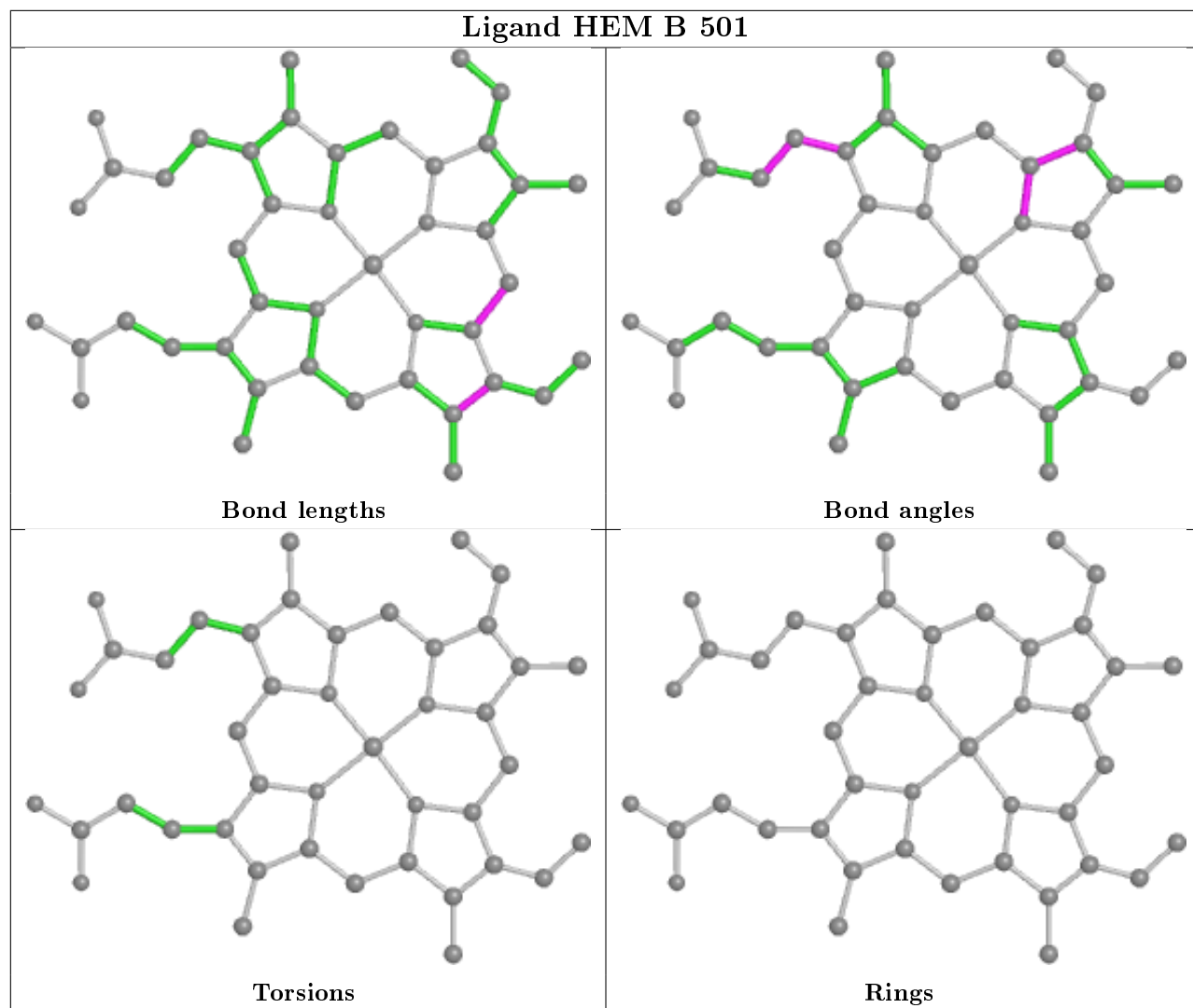
Mol	Chain	Res	Type	Clashes	Symm-Clashes
4	B	505[A]	82S	1	0
2	A	501	HEM	1	0
4	A	505[A]	82S	1	0
4	A	505[B]	82S	1	0
2	B	501	HEM	2	0
3	A	503	CM5	3	0
3	B	503	CM5	2	0
4	B	505[B]	82S	1	0

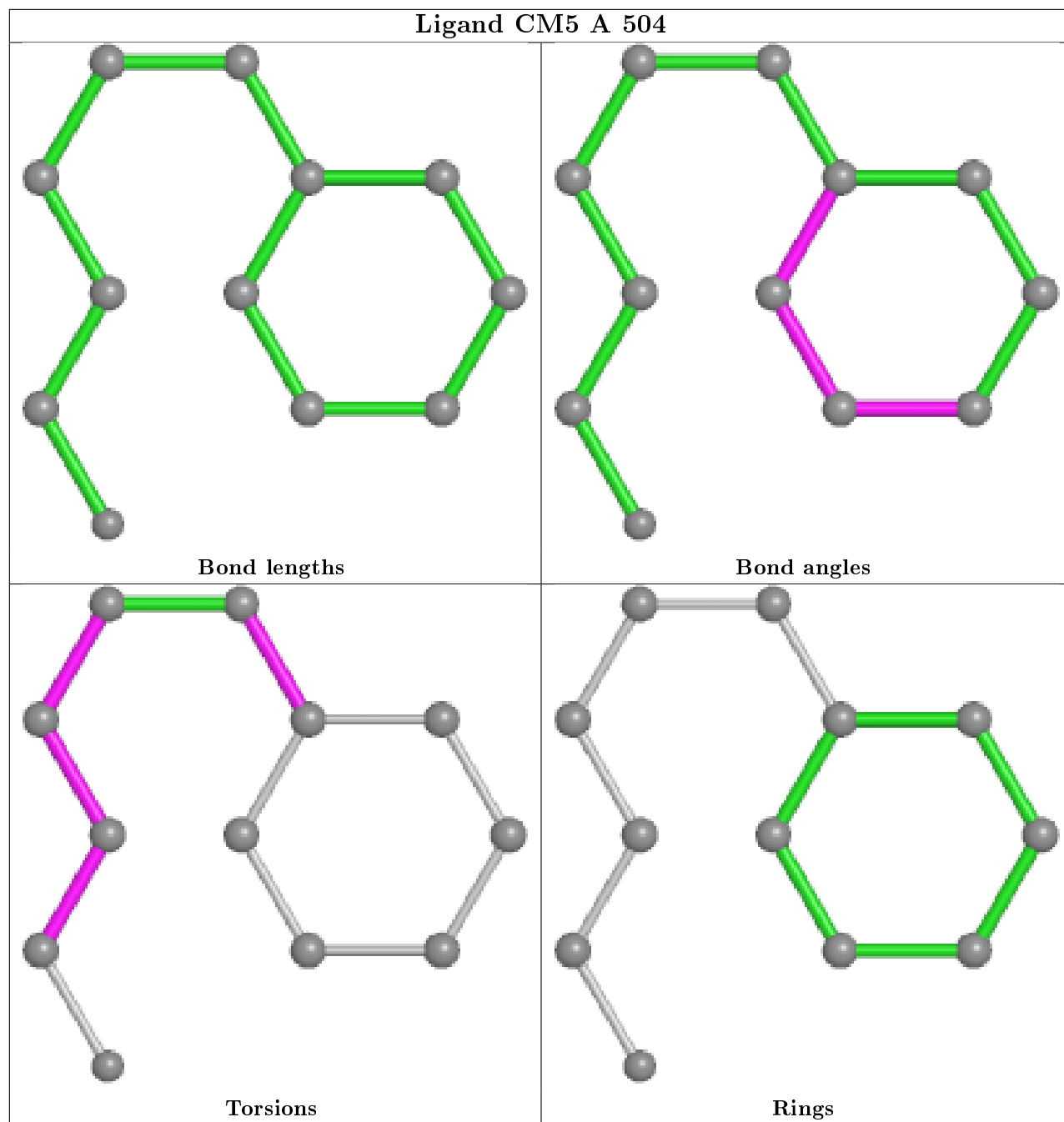
The following is a two-dimensional graphical depiction of Mogul quality analysis of bond lengths, bond angles, torsion angles, and ring geometry for all instances of the Ligand of Interest. In addition, ligands with molecular weight > 250 and outliers as shown on the validation Tables will also be included. For torsion angles, if less than 5% of the Mogul distribution of torsion angles is within 10 degrees of the torsion angle in question, then that torsion angle is considered an outlier. Any bond that is central to one or more torsion angles identified as an outlier by Mogul will be highlighted in the graph. For rings, the root-mean-square deviation (RMSD) between the ring in question and similar rings identified by Mogul is calculated over all ring torsion angles. If the average RMSD is greater than 60 degrees and the minimal RMSD between the ring in question and any Mogul-identified rings is also greater than 60 degrees, then that ring is considered an outlier. The outliers are highlighted in purple. The color gray indicates Mogul did not find sufficient equivalents in the CSD to analyse the geometry.

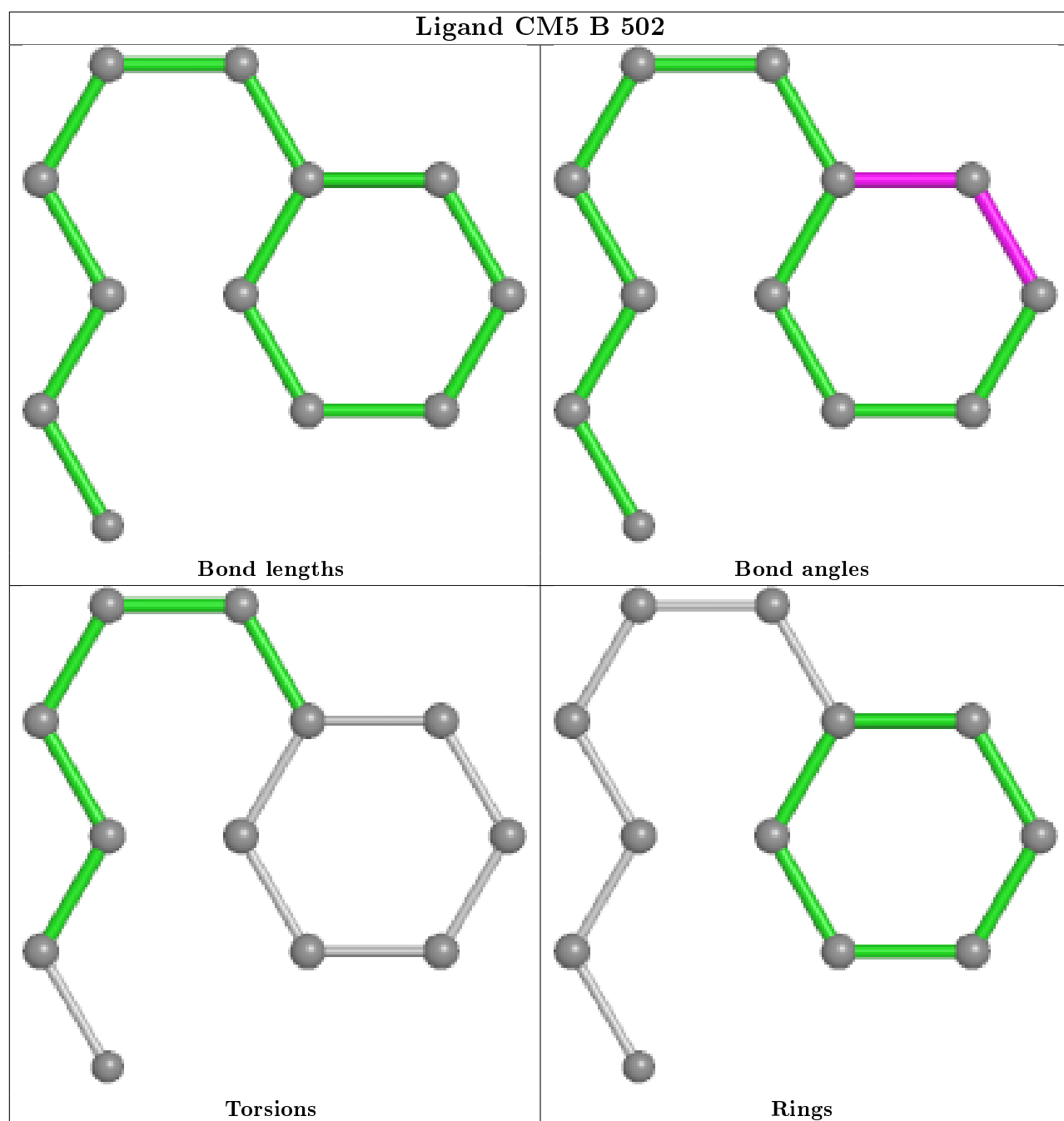


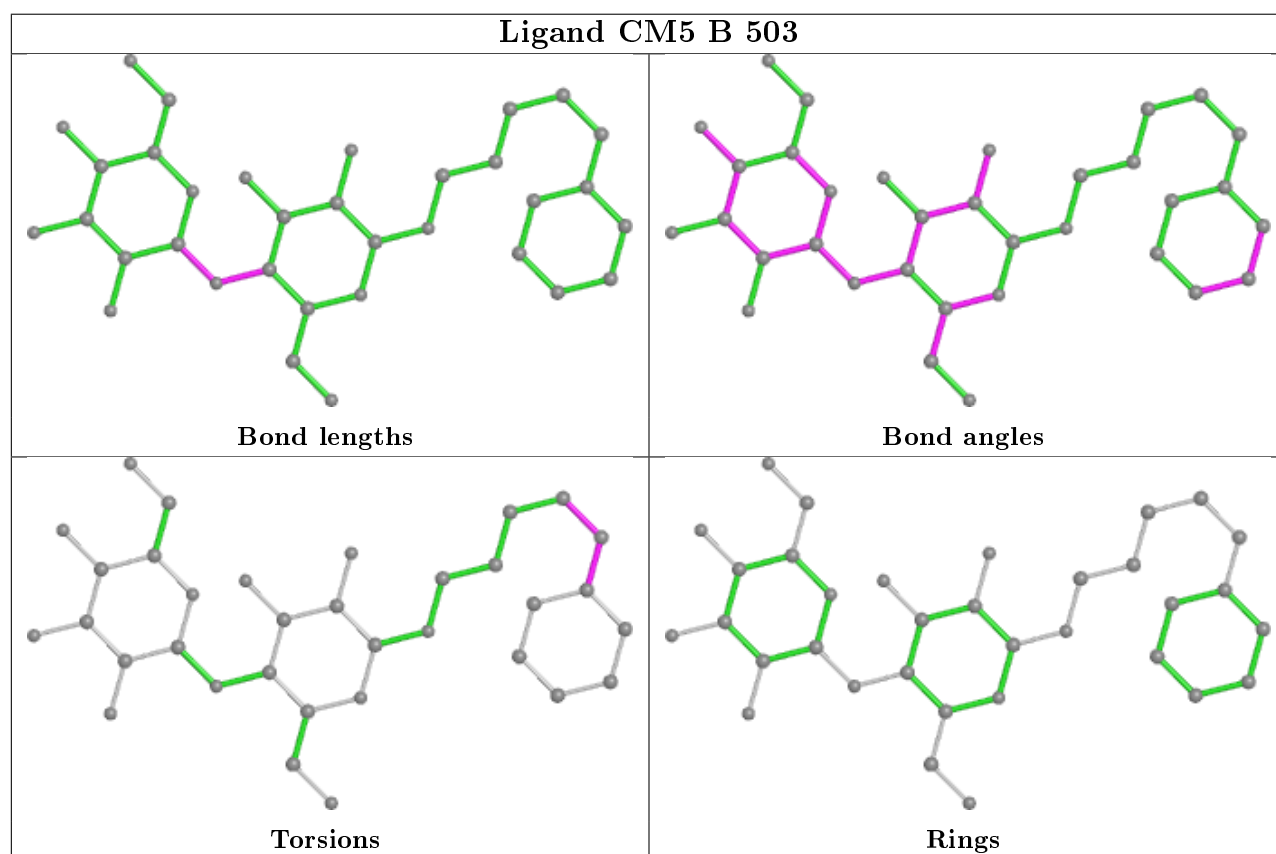
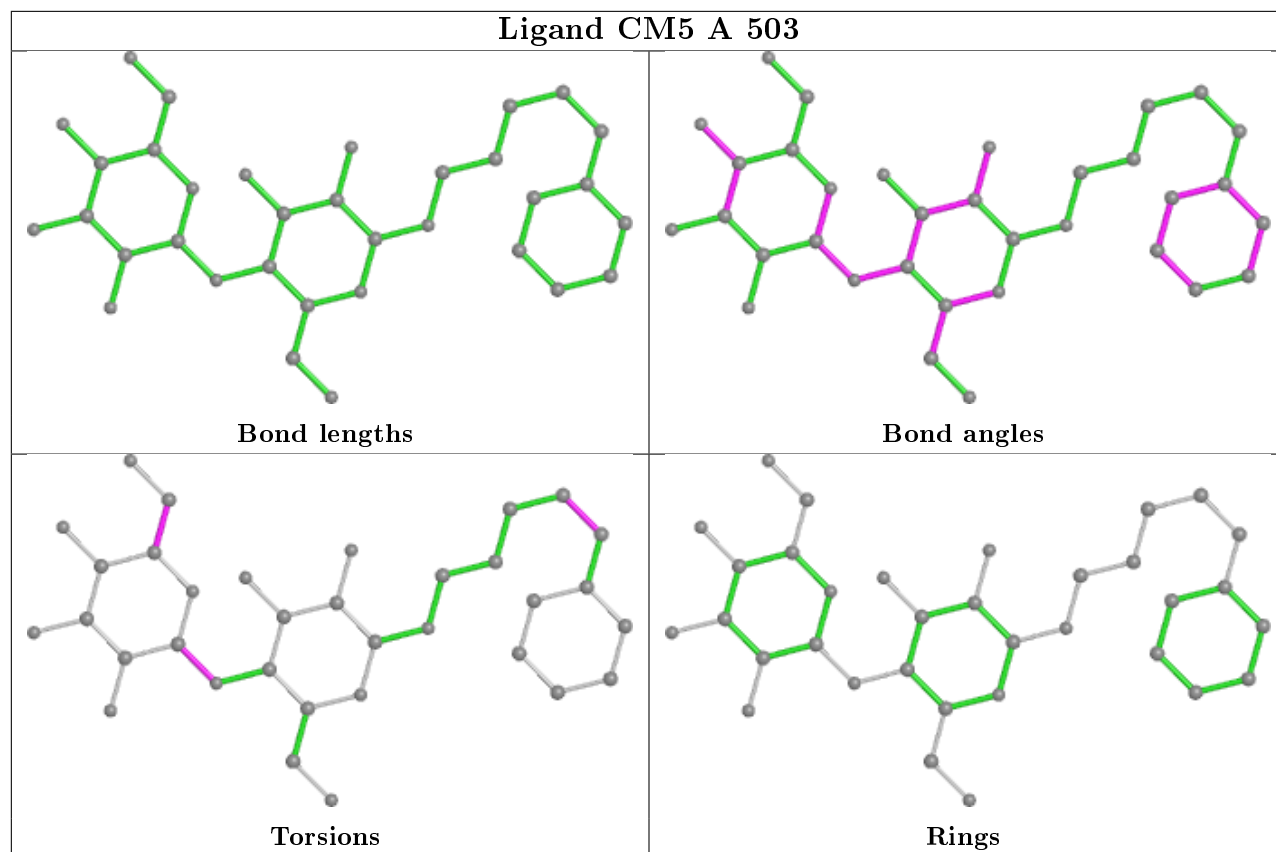












5.7 Other polymers [i](#)

There are no such residues in this entry.

5.8 Polymer linkage issues [i](#)

There are no chain breaks in this entry.

6 Fit of model and data [i](#)

6.1 Protein, DNA and RNA chains [i](#)

In the following table, the column labelled ‘#RSRZ> 2’ contains the number (and percentage) of RSRZ outliers, followed by percent RSRZ outliers for the chain as percentile scores relative to all X-ray entries and entries of similar resolution. The OWAB column contains the minimum, median, 95th percentile and maximum values of the occupancy-weighted average B-factor per residue. The column labelled ‘Q< 0.9’ lists the number of (and percentage) of residues with an average occupancy less than 0.9.

Mol	Chain	Analysed	<RSRZ>	#RSRZ>2	OWAB(Å ²)	Q<0.9
1	A	464/476 (97%)	-0.65	0 100 100	16, 25, 44, 87	9 (1%)
1	B	463/476 (97%)	-0.67	0 100 100	15, 25, 44, 74	9 (1%)
All	All	927/952 (97%)	-0.66	0 100 100	15, 25, 45, 87	18 (1%)

There are no RSRZ outliers to report.

6.2 Non-standard residues in protein, DNA, RNA chains [i](#)

There are no non-standard protein/DNA/RNA residues in this entry.

6.3 Carbohydrates [i](#)

There are no carbohydrates in this entry.

6.4 Ligands [i](#)

In the following table, the Atoms column lists the number of modelled atoms in the group and the number defined in the chemical component dictionary. The B-factors column lists the minimum, median, 95th percentile and maximum values of B factors of atoms in the group. The column labelled ‘Q< 0.9’ lists the number of atoms with occupancy less than 0.9.

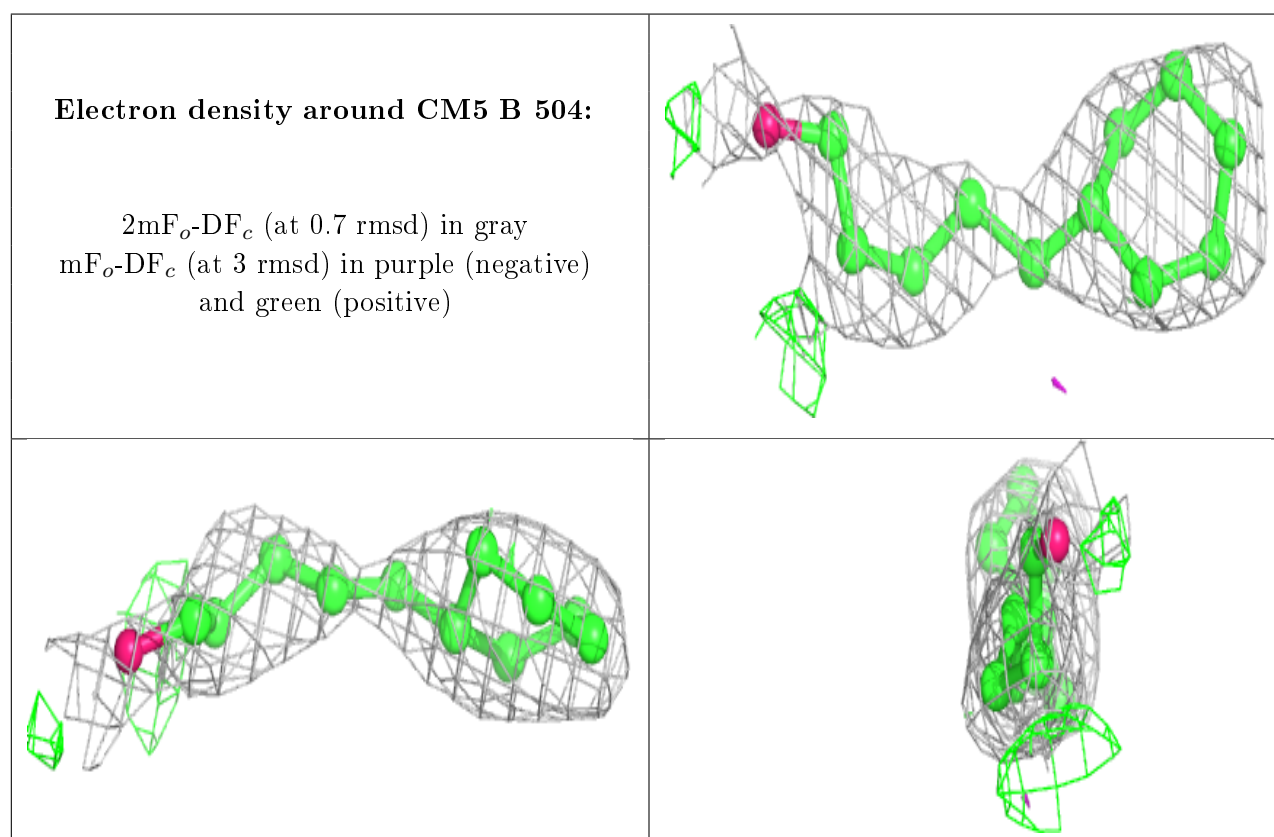
Mol	Type	Chain	Res	Atoms	RSCC	RSR	B-factors(Å ²)	Q<0.9
3	CM5	B	504	12/34	0.87	0.19	57,58,67,77	0
3	CM5	A	502	12/34	0.88	0.11	49,53,57,57	0
3	CM5	B	502	12/34	0.88	0.12	45,51,56,57	0
3	CM5	A	504	12/34	0.89	0.17	51,57,66,67	0
4	82S	A	505[B]	11/11	0.92	0.23	38,41,42,44	11
4	82S	B	505[A]	11/11	0.92	0.22	49,50,51,60	11
4	82S	A	505[A]	11/11	0.92	0.23	52,58,60,63	11

Continued on next page...

Continued from previous page...

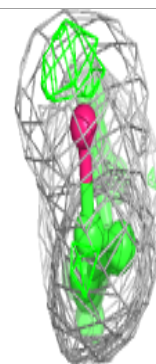
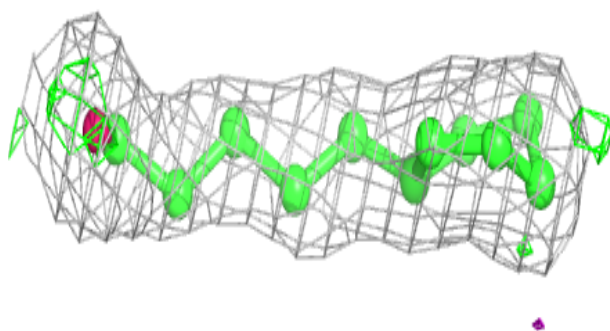
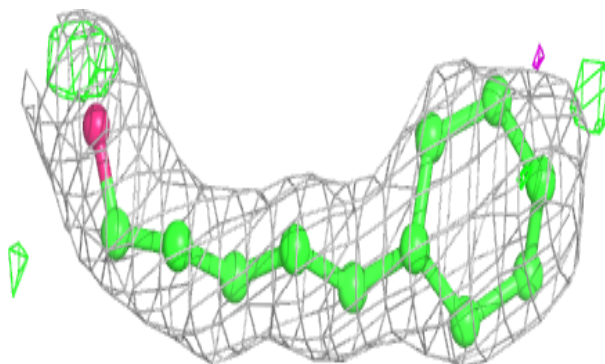
Mol	Type	Chain	Res	Atoms	RSCC	RSR	B-factors(\AA^2)	Q<0.9
3	CM5	A	503	34/34	0.92	0.15	33,47,63,66	0
4	82S	B	505[B]	11/11	0.92	0.22	37,39,42,42	11
3	CM5	B	503	34/34	0.93	0.16	33,46,61,65	0
2	HEM	B	501	43/43	0.99	0.08	15,17,19,22	0
2	HEM	A	501	43/43	0.99	0.08	15,18,19,28	0

The following is a graphical depiction of the model fit to experimental electron density of all instances of the Ligand of Interest. In addition, ligands with molecular weight > 250 and outliers as shown on the geometry validation Tables will also be included. Each fit is shown from different orientation to approximate a three-dimensional view.

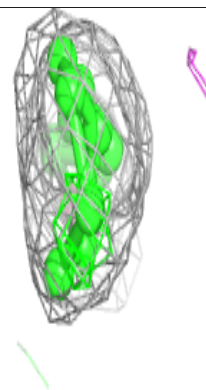
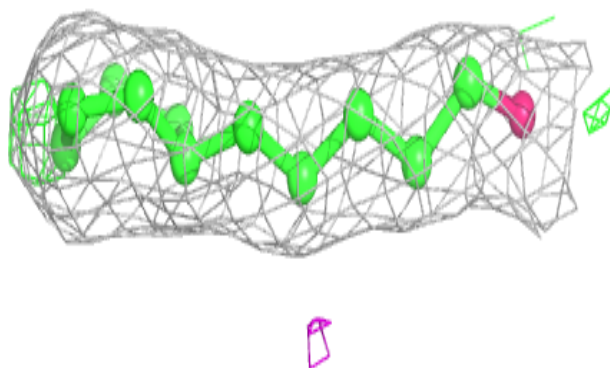
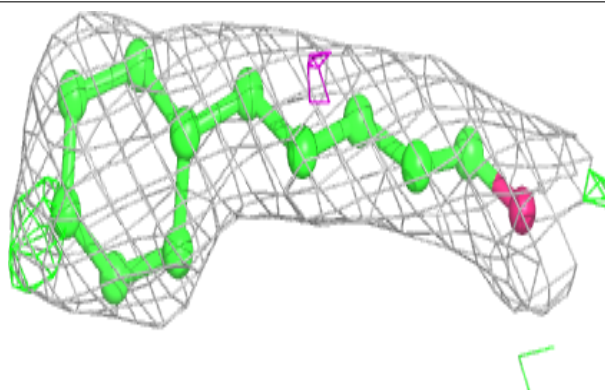


Electron density around CM5 A 502:

$2mF_o-DF_c$ (at 0.7 rmsd) in gray
 mF_o-DF_c (at 3 rmsd) in purple (negative)
and green (positive)

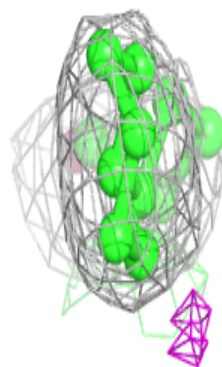
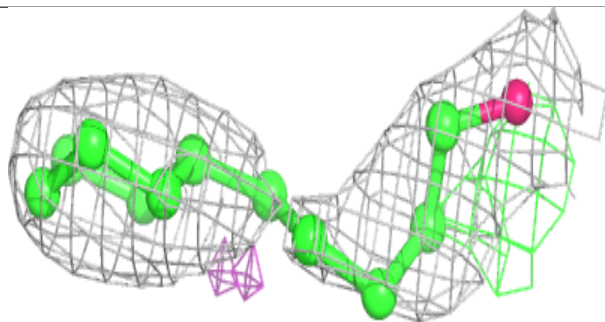
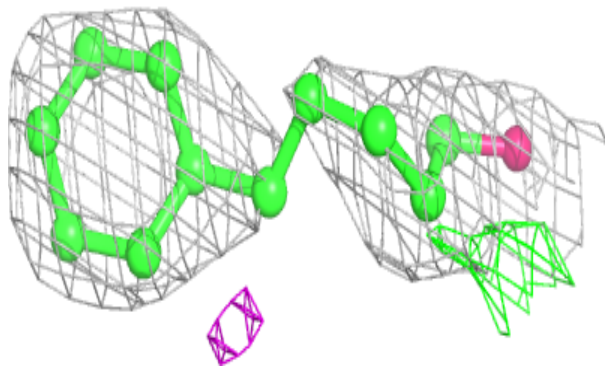
**Electron density around CM5 B 502:**

$2mF_o-DF_c$ (at 0.7 rmsd) in gray
 mF_o-DF_c (at 3 rmsd) in purple (negative)
and green (positive)

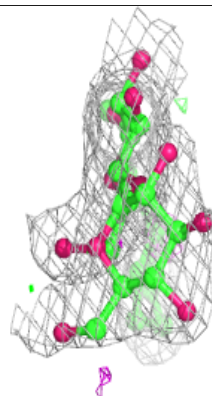
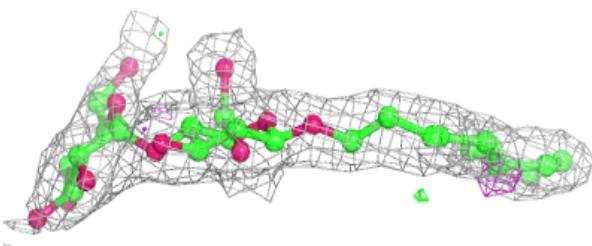
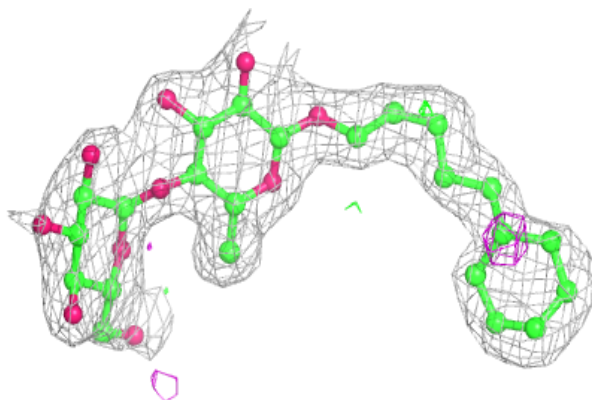


Electron density around CM5 A 504:

$2mF_o-DF_c$ (at 0.7 rmsd) in gray
 mF_o-DF_c (at 3 rmsd) in purple (negative)
and green (positive)

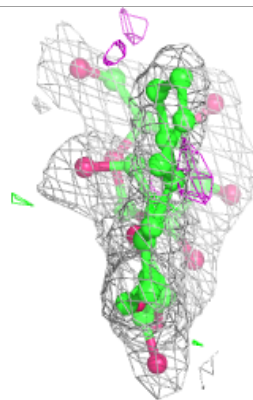
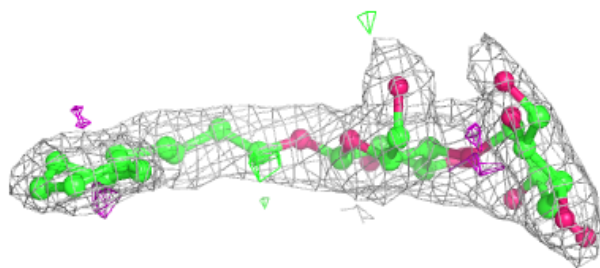
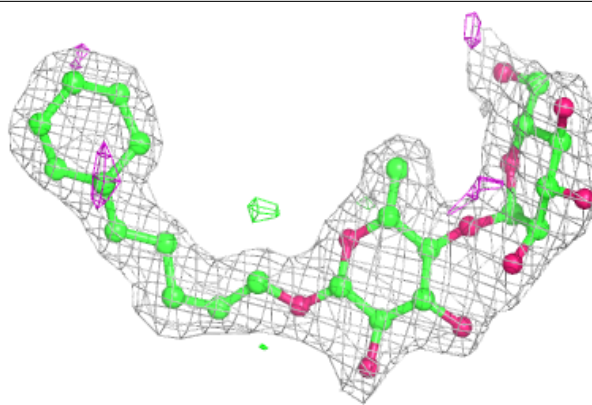
**Electron density around CM5 A 503:**

$2mF_o-DF_c$ (at 0.7 rmsd) in gray
 mF_o-DF_c (at 3 rmsd) in purple (negative)
and green (positive)



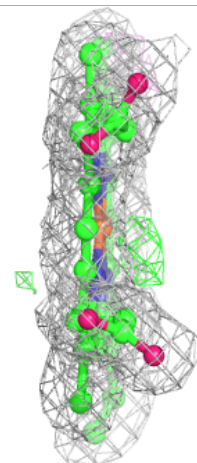
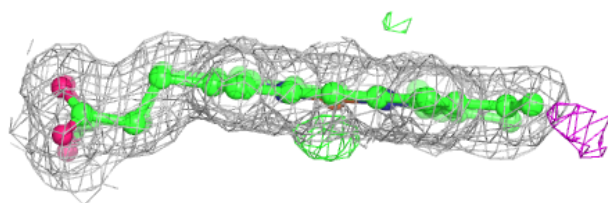
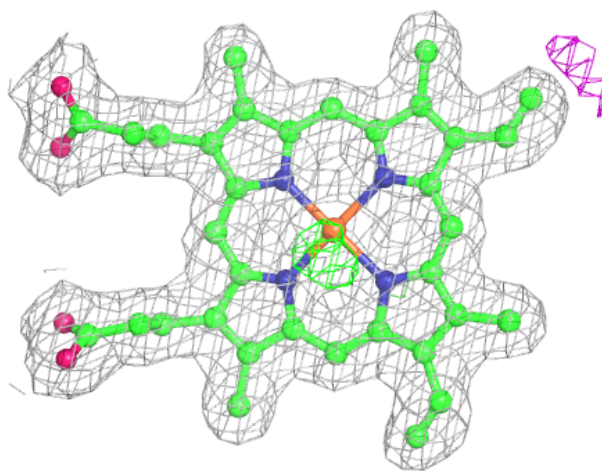
Electron density around CM5 B 503:

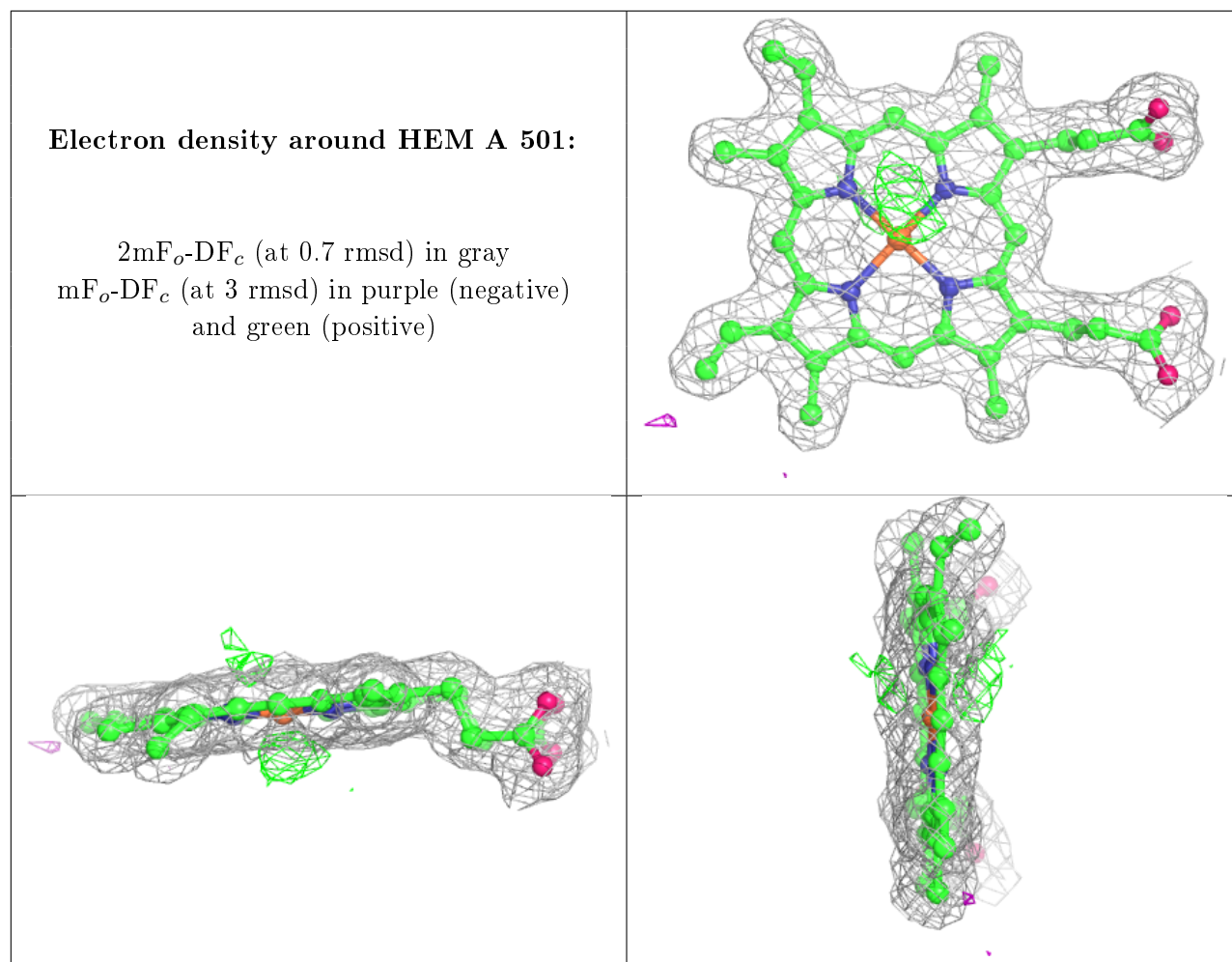
$2mF_o-DF_c$ (at 0.7 rmsd) in gray
 mF_o-DF_c (at 3 rmsd) in purple (negative)
and green (positive)



Electron density around HEM B 501:

$2mF_o-DF_c$ (at 0.7 rmsd) in gray
 mF_o-DF_c (at 3 rmsd) in purple (negative)
and green (positive)





6.5 Other polymers [i](#)

There are no such residues in this entry.