



# Full wwPDB X-ray Structure Validation Report ⓘ

Aug 22, 2020 – 01:46 PM BST

PDB ID : 4UCD  
Title : N-terminal globular domain of the RSV Nucleoprotein in complex with the Nucleoprotein Phosphoprotein interaction inhibitor M81  
Authors : Ouizougoun-Oubari, M.; Pereira, N.; Tarus, B.; Galloux, M.; Tortorici, M.-A.; Hoos, S.; Baron, B.; England, P.; Bontems, F.; Rey, F.A.; Eleouet, J.-F.; Sizun, C.; Slama-Schwok, A.; Duquerroy, S.  
Deposited on : 2014-12-03  
Resolution : 2.66 Å(reported)

This is a Full wwPDB X-ray Structure Validation Report for a publicly released PDB entry.

We welcome your comments at [validation@mail.wwpdb.org](mailto:validation@mail.wwpdb.org)

A user guide is available at

<https://www.wwpdb.org/validation/2017/XrayValidationReportHelp>

with specific help available everywhere you see the ⓘ symbol.

---

The following versions of software and data (see [references ⓘ](#)) were used in the production of this report:

MolProbity : 4.02b-467  
Mogul : 1.8.5 (274361), CSD as541be (2020)  
Xtriage (Phenix) : 1.13  
EDS : 2.13.1  
Percentile statistics : 20191225.v01 (using entries in the PDB archive December 25th 2019)  
Refmac : 5.8.0158  
CCP4 : 7.0.044 (Gargrove)  
Ideal geometry (proteins) : Engh & Huber (2001)  
Ideal geometry (DNA, RNA) : Parkinson et al. (1996)  
Validation Pipeline (wwPDB-VP) : 2.13.1

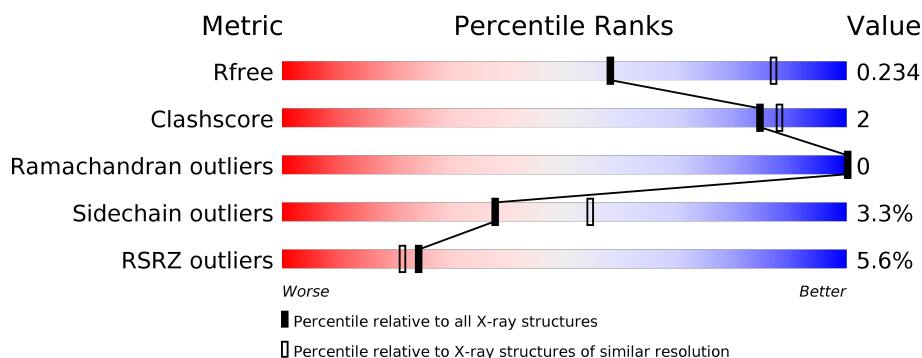
# 1 Overall quality at a glance

The following experimental techniques were used to determine the structure:

## *X-RAY DIFFRACTION*

The reported resolution of this entry is 2.66 Å.

Percentile scores (ranging between 0-100) for global validation metrics of the entry are shown in the following graphic. The table shows the number of entries on which the scores are based.



Metric	Whole archive (#Entries)	Similar resolution (#Entries, resolution range(Å))
$R_{free}$	130704	1332 (2.68-2.64)
Clashscore	141614	1374 (2.68-2.64)
Ramachandran outliers	138981	1349 (2.68-2.64)
Sidechain outliers	138945	1349 (2.68-2.64)
RSRZ outliers	127900	1318 (2.68-2.64)

The table below summarises the geometric issues observed across the polymeric chains and their fit to the electron density. The red, orange, yellow and green segments on the lower bar indicate the fraction of residues that contain outliers for  $\geq 3$ , 2, 1 and 0 types of geometric quality criteria respectively. A grey segment represents the fraction of residues that are not modelled. The numeric value for each fraction is indicated below the corresponding segment, with a dot representing fractions  $\leq 5\%$ . The upper red bar (where present) indicates the fraction of residues that have poor fit to the electron density. The numeric value is given above the bar.

Mol	Chain	Length	Quality of chain
1	A	233	<div> <div>5%</div> <div> <div></div> <div>87%</div> <div>8%</div> <div>6%</div> </div> </div>
1	B	233	<div> <div>6%</div> <div> <div></div> <div>87%</div> <div>9%</div> <div>.</div> </div> </div>

## 2 Entry composition [i](#)

There are 4 unique types of molecules in this entry. The entry contains 3531 atoms, of which 14 are hydrogens and 0 are deuteriums.

In the tables below, the ZeroOcc column contains the number of atoms modelled with zero occupancy, the AltConf column contains the number of residues with at least one atom in alternate conformation and the Trace column contains the number of residues modelled with at most 2 atoms.

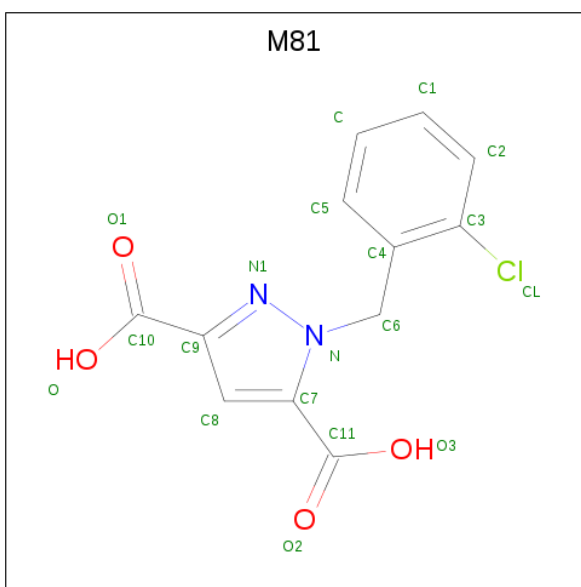
- Molecule 1 is a protein called NUCLEOPROTEIN.

Mol	Chain	Residues	Atoms					ZeroOcc	AltConf	Trace
1	A	220	Total	C	N	O	S	0	1	0
			1717	1093	299	313	12			
1	B	223	Total	C	N	O	S	0	0	0
			1737	1104	303	318	12			

There are 22 discrepancies between the modelled and reference sequences:

Chain	Residue	Modelled	Actual	Comment	Reference
A	28	MET	-	expression tag	UNP P03418
A	29	GLY	-	expression tag	UNP P03418
A	30	SER	-	expression tag	UNP P03418
A	253	LEU	-	expression tag	UNP P03418
A	254	GLU	-	expression tag	UNP P03418
A	255	HIS	-	expression tag	UNP P03418
A	256	HIS	-	expression tag	UNP P03418
A	257	HIS	-	expression tag	UNP P03418
A	258	HIS	-	expression tag	UNP P03418
A	259	HIS	-	expression tag	UNP P03418
A	260	HIS	-	expression tag	UNP P03418
B	28	MET	-	expression tag	UNP P03418
B	29	GLY	-	expression tag	UNP P03418
B	30	SER	-	expression tag	UNP P03418
B	253	LEU	-	expression tag	UNP P03418
B	254	GLU	-	expression tag	UNP P03418
B	255	HIS	-	expression tag	UNP P03418
B	256	HIS	-	expression tag	UNP P03418
B	257	HIS	-	expression tag	UNP P03418
B	258	HIS	-	expression tag	UNP P03418
B	259	HIS	-	expression tag	UNP P03418
B	260	HIS	-	expression tag	UNP P03418

- Molecule 2 is 1-[(2-chlorophenyl)methyl]pyrazole-3,5-dicarboxylic acid (three-letter code: M81) (formula: C<sub>12</sub>H<sub>9</sub>ClN<sub>2</sub>O<sub>4</sub>).



Mol	Chain	Residues	Atoms						ZeroOcc	AltConf
2	A	1	Total	C	Cl	H	N	O	0	0
			26	12	1	7	2	4		
2	B	1	Total	C	Cl	H	N	O	0	0
			26	12	1	7	2	4		

- Molecule 3 is SULFATE ION (three-letter code: SO4) (formula: O<sub>4</sub>S).



Mol	Chain	Residues	Atoms		ZeroOcc	AltConf
3	B	1	Total	O S	0	0
			5	4 1		

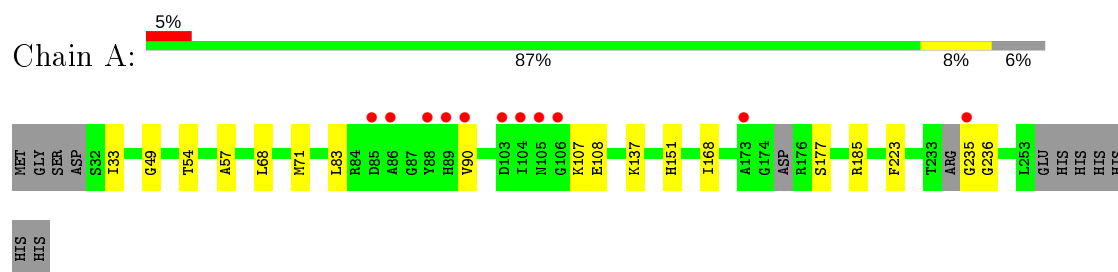
- Molecule 4 is water.

Mol	Chain	Residues	Atoms		ZeroOcc	AltConf
4	A	9	Total 9	O 9	0	0
4	B	11	Total 11	O 11	0	0

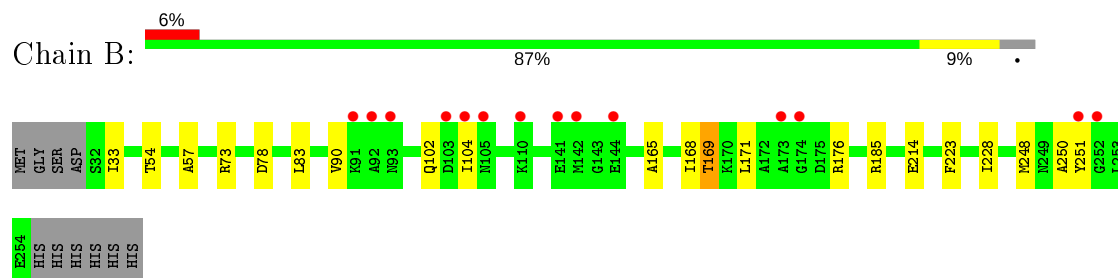
### 3 Residue-property plots [i](#)

These plots are drawn for all protein, RNA, DNA and oligosaccharide chains in the entry. The first graphic for a chain summarises the proportions of the various outlier classes displayed in the second graphic. The second graphic shows the sequence view annotated by issues in geometry and electron density. Residues are color-coded according to the number of geometric quality criteria for which they contain at least one outlier: green = 0, yellow = 1, orange = 2 and red = 3 or more. A red dot above a residue indicates a poor fit to the electron density ( $RSRZ > 2$ ). Stretches of 2 or more consecutive residues without any outlier are shown as a green connector. Residues present in the sample, but not in the model, are shown in grey.

#### • Molecule 1: NUCLEOPROTEIN



#### • Molecule 1: NUCLEOPROTEIN



## 4 Data and refinement statistics

Property	Value	Source
Space group	P 21 21 21	Depositor
Cell constants a, b, c, $\alpha$ , $\beta$ , $\gamma$	34.68Å 71.94Å 178.55Å 90.00° 90.00° 90.00°	Depositor
Resolution (Å)	20.00 – 2.66 35.97 – 2.66	Depositor EDS
% Data completeness (in resolution range)	96.6 (20.00-2.66) 97.1 (35.97-2.66)	Depositor EDS
$R_{merge}$	0.08	Depositor
$R_{sym}$	(Not available)	Depositor
$\langle I/\sigma(I) \rangle$ <sup>1</sup>	1.14 (at 2.65Å)	Xtriage
Refinement program	BUSTER 2.11.4	Depositor
R, $R_{free}$	0.174 , 0.215 0.192 , 0.234	Depositor DCC
$R_{free}$ test set	1289 reflections (9.85%)	wwPDB-VP
Wilson B-factor (Å <sup>2</sup> )	64.3	Xtriage
Anisotropy	0.307	Xtriage
Bulk solvent $k_{sol}$ (e/Å <sup>3</sup> ), $B_{sol}$ (Å <sup>2</sup> )	0.32 , 68.4	EDS
L-test for twinning <sup>2</sup>	$\langle  L  \rangle = 0.46$ , $\langle L^2 \rangle = 0.29$	Xtriage
Estimated twinning fraction	No twinning to report.	Xtriage
$F_o, F_c$ correlation	0.95	EDS
Total number of atoms	3531	wwPDB-VP
Average B, all atoms (Å <sup>2</sup> )	87.0	wwPDB-VP

Xtriage's analysis on translational NCS is as follows: *The largest off-origin peak in the Patterson function is 5.18% of the height of the origin peak. No significant pseudotranslation is detected.*

<sup>1</sup>Intensities estimated from amplitudes.

<sup>2</sup>Theoretical values of  $\langle |L| \rangle$ ,  $\langle L^2 \rangle$  for acentric reflections are 0.5, 0.333 respectively for untwinned datasets, and 0.375, 0.2 for perfectly twinned datasets.

## 5 Model quality

### 5.1 Standard geometry

Bond lengths and bond angles in the following residue types are not validated in this section: SO4, M81

The Z score for a bond length (or angle) is the number of standard deviations the observed value is removed from the expected value. A bond length (or angle) with  $|Z| > 5$  is considered an outlier worth inspection. RMSZ is the root-mean-square of all Z scores of the bond lengths (or angles).

Mol	Chain	Bond lengths		Bond angles	
		RMSZ	# Z  >5	RMSZ	# Z  >5
1	A	0.50	0/1748	0.66	0/2349
1	B	0.51	0/1766	0.61	0/2375
All	All	0.51	0/3514	0.64	0/4724

There are no bond length outliers.

There are no bond angle outliers.

There are no chirality outliers.

There are no planarity outliers.

### 5.2 Too-close contacts

In the following table, the Non-H and H(model) columns list the number of non-hydrogen atoms and hydrogen atoms in the chain respectively. The H(added) column lists the number of hydrogen atoms added and optimized by MolProbity. The Clashes column lists the number of clashes within the asymmetric unit, whereas Symm-Clashes lists symmetry related clashes.

Mol	Chain	Non-H	H(model)	H(added)	Clashes	Symm-Clashes
1	A	1717	0	1735	7	0
1	B	1737	0	1761	9	0
2	A	19	7	7	0	0
2	B	19	7	7	0	0
3	B	5	0	0	0	0
4	A	9	0	0	0	0
4	B	11	0	0	0	0
All	All	3517	14	3510	16	0

The all-atom clashscore is defined as the number of clashes found per 1000 atoms (including hydrogen atoms). The all-atom clashscore for this structure is 2.



All (16) close contacts within the same asymmetric unit are listed below, sorted by their clash magnitude.

Atom-1	Atom-2	Interatomic distance (Å)	Clash overlap (Å)
1:A:83:LEU:HD13	1:A:90:VAL:HG11	1.83	0.59
1:B:165:ALA:O	1:B:169:THR:HG23	2.05	0.57
1:B:169:THR:HG22	1:B:250:ALA:HB2	1.94	0.49
1:A:49:GLY:HA3	1:A:151:HIS:O	2.13	0.48
1:A:168:ILE:HG13	1:A:223:PHE:CD2	2.47	0.48
1:A:68:LEU:HD23	1:A:71:MET:HE3	1.96	0.47
1:A:235:GLY:HA3	1:A:236:GLY:HA3	1.66	0.47
1:B:168:ILE:HG13	1:B:223:PHE:CD2	2.50	0.47
1:B:83:LEU:HD13	1:B:90:VAL:HG11	1.97	0.47
1:B:176:ARG:HD2	1:B:214:GLU:OE2	2.17	0.45
1:A:33:ILE:HD13	1:A:90:VAL:HG12	1.98	0.44
1:B:33:ILE:HD13	1:B:90:VAL:HG12	2.00	0.44
1:B:102:GLN:HE21	1:B:104:ILE:HD11	1.82	0.44
1:B:54:THR:HB	1:B:57:ALA:HB2	2.00	0.44
1:A:54:THR:HB	1:A:57:ALA:HB2	2.03	0.41
1:B:251:TYR:CD1	1:B:251:TYR:N	2.89	0.40

There are no symmetry-related clashes.

## 5.3 Torsion angles [i](#)

### 5.3.1 Protein backbone [i](#)

In the following table, the Percentiles column shows the percent Ramachandran outliers of the chain as a percentile score with respect to all X-ray entries followed by that with respect to entries of similar resolution.

The Analysed column shows the number of residues for which the backbone conformation was analysed, and the total number of residues.

Mol	Chain	Analysed	Favoured	Allowed	Outliers	Percentiles	
1	A	215/233 (92%)	210 (98%)	5 (2%)	0	100	100
1	B	221/233 (95%)	219 (99%)	2 (1%)	0	100	100
All	All	436/466 (94%)	429 (98%)	7 (2%)	0	100	100

There are no Ramachandran outliers to report.

### 5.3.2 Protein sidechains ⓘ

In the following table, the Percentiles column shows the percent sidechain outliers of the chain as a percentile score with respect to all X-ray entries followed by that with respect to entries of similar resolution.

The Analysed column shows the number of residues for which the sidechain conformation was analysed, and the total number of residues.

Mol	Chain	Analysed	Rotameric	Outliers	Percentiles	
1	A	183/198 (92%)	178 (97%)	5 (3%)	44	63
1	B	185/198 (93%)	178 (96%)	7 (4%)	33	49
All	All	368/396 (93%)	356 (97%)	12 (3%)	38	54

All (12) residues with a non-rotameric sidechain are listed below:

Mol	Chain	Res	Type
1	A	107	LYS
1	A	108	GLU
1	A	137	LYS
1	A	177	SER
1	A	185	ARG
1	B	73	ARG
1	B	78	ASP
1	B	169	THR
1	B	171	LEU
1	B	185	ARG
1	B	228	ILE
1	B	248	MET

Some sidechains can be flipped to improve hydrogen bonding and reduce clashes. All (5) such sidechains are listed below:

Mol	Chain	Res	Type
1	A	102	GLN
1	A	207	ASN
1	A	216	HIS
1	B	102	GLN
1	B	187	ASN

### 5.3.3 RNA ⓘ

There are no RNA molecules in this entry.

## 5.4 Non-standard residues in protein, DNA, RNA chains [i](#)

There are no non-standard protein/DNA/RNA residues in this entry.

## 5.5 Carbohydrates [i](#)

There are no monosaccharides in this entry.

## 5.6 Ligand geometry [i](#)

3 ligands are modelled in this entry.

In the following table, the Counts columns list the number of bonds (or angles) for which Mogul statistics could be retrieved, the number of bonds (or angles) that are observed in the model and the number of bonds (or angles) that are defined in the Chemical Component Dictionary. The Link column lists molecule types, if any, to which the group is linked. The Z score for a bond length (or angle) is the number of standard deviations the observed value is removed from the expected value. A bond length (or angle) with  $|Z| > 2$  is considered an outlier worth inspection. RMSZ is the root-mean-square of all Z scores of the bond lengths (or angles).

Mol	Type	Chain	Res	Link	Bond lengths			Bond angles		
					Counts	RMSZ	$\# Z  > 2$	Counts	RMSZ	$\# Z  > 2$
2	M81	A	1301	-	13,20,20	0.32	0	14,28,28	0.31	0
2	M81	B	1301	-	13,20,20	0.25	0	14,28,28	0.34	0
3	SO4	B	1255	-	4,4,4	0.12	0	6,6,6	0.11	0

In the following table, the Chirals column lists the number of chiral outliers, the number of chiral centers analysed, the number of these observed in the model and the number defined in the Chemical Component Dictionary. Similar counts are reported in the Torsion and Rings columns. '-' means no outliers of that kind were identified.

Mol	Type	Chain	Res	Link	Chirals	Torsions	Rings
2	M81	A	1301	-	-	0/4/12/12	0/2/2/2
2	M81	B	1301	-	-	0/4/12/12	0/2/2/2

There are no bond length outliers.

There are no bond angle outliers.

There are no chirality outliers.

There are no torsion outliers.

There are no ring outliers.

No monomer is involved in short contacts.

## 5.7 Other polymers [i](#)

There are no such residues in this entry.

## 5.8 Polymer linkage issues [i](#)

There are no chain breaks in this entry.

## 6 Fit of model and data

### 6.1 Protein, DNA and RNA chains

In the following table, the column labelled ‘#RSRZ> 2’ contains the number (and percentage) of RSRZ outliers, followed by percent RSRZ outliers for the chain as percentile scores relative to all X-ray entries and entries of similar resolution. The OWAB column contains the minimum, median, 95<sup>th</sup> percentile and maximum values of the occupancy-weighted average B-factor per residue. The column labelled ‘Q< 0.9’ lists the number of (and percentage) of residues with an average occupancy less than 0.9.

Mol	Chain	Analysed	<RSRZ>	#RSRZ>2	OWAB(Å <sup>2</sup> )	Q<0.9
1	A	220/233 (94%)	0.14	11 (5%) 28 25	50, 78, 132, 150	1 (0%)
1	B	223/233 (95%)	0.12	14 (6%) 20 17	49, 82, 147, 187	1 (0%)
All	All	443/466 (95%)	0.13	25 (5%) 24 21	49, 81, 143, 187	2 (0%)

All (25) RSRZ outliers are listed below:

Mol	Chain	Res	Type	RSRZ
1	A	103	ASP	6.2
1	A	85	ASP	6.0
1	A	106	GLY	5.5
1	B	105	ASN	5.3
1	A	88	TYR	5.0
1	A	89[A]	HIS	5.0
1	B	173	ALA	4.9
1	B	104	ILE	4.1
1	B	93	ASN	4.0
1	A	90	VAL	3.8
1	A	105	ASN	3.4
1	B	91	LYS	3.3
1	B	174	GLY	3.1
1	A	104	ILE	3.1
1	B	251	TYR	3.0
1	A	173	ALA	2.9
1	B	144	GLU	2.9
1	B	252	GLY	2.8
1	A	235	GLY	2.8
1	B	92	ALA	2.6
1	A	86	ALA	2.4
1	B	142	MET	2.2
1	B	141	GLU	2.2
1	B	103	ASP	2.1

*Continued on next page...*

*Continued from previous page...*

Mol	Chain	Res	Type	RSRZ
1	B	110	LYS	2.0

## 6.2 Non-standard residues in protein, DNA, RNA chains [i](#)

There are no non-standard protein/DNA/RNA residues in this entry.

## 6.3 Carbohydrates [i](#)

There are no monosaccharides in this entry.

## 6.4 Ligands [i](#)

In the following table, the Atoms column lists the number of modelled atoms in the group and the number defined in the chemical component dictionary. The B-factors column lists the minimum, median, 95<sup>th</sup> percentile and maximum values of B factors of atoms in the group. The column labelled 'Q< 0.9' lists the number of atoms with occupancy less than 0.9.

Mol	Type	Chain	Res	Atoms	RSCC	RSR	B-factors( $\text{\AA}^2$ )	Q<0.9
3	SO4	B	1255	5/5	0.85	0.18	193,193,193,193	0
2	M81	B	1301	19/19	0.87	0.25	115,129,149,151	0
2	M81	A	1301	19/19	0.87	0.24	85,96,108,112	0

## 6.5 Other polymers [i](#)

There are no such residues in this entry.