



Full wwPDB X-ray Structure Validation Report ⓘ

May 22, 2020 – 07:10 am BST

PDB ID : 4UF4
Title : Crystal structure of the human CARBOXYPEPTIDASE A1 in complex with a thiirane mechanism-based inhibitor
Authors : Gallego, P.; Granados, C.; Pallares, I.; Covaleda, G.; Aviles, F.X.; Vendrell, J.; Reverter, D.
Deposited on : 2014-12-23
Resolution : 1.77 Å(reported)

This is a Full wwPDB X-ray Structure Validation Report for a publicly released PDB entry.

We welcome your comments at validation@mail.wwpdb.org

A user guide is available at

<https://www.wwpdb.org/validation/2017/XrayValidationReportHelp>

with specific help available everywhere you see the ⓘ symbol.

The following versions of software and data (see [references ⓘ](#)) were used in the production of this report:

MolProbity : 4.02b-467
Mogul : 1.8.5 (274361), CSD as541be (2020)
Xtriage (Phenix) : 1.13
EDS : 2.11
Percentile statistics : 20191225.v01 (using entries in the PDB archive December 25th 2019)
Refmac : 5.8.0158
CCP4 : 7.0.044 (Gargrove)
Ideal geometry (proteins) : Engh & Huber (2001)
Ideal geometry (DNA, RNA) : Parkinson et al. (1996)
Validation Pipeline (wwPDB-VP) : 2.11

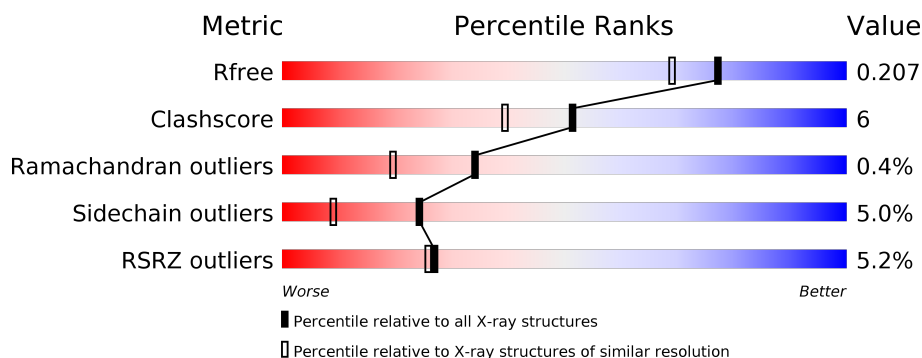
1 Overall quality at a glance ⓘ

The following experimental techniques were used to determine the structure:

X-RAY DIFFRACTION

The reported resolution of this entry is 1.77 Å.

Percentile scores (ranging between 0-100) for global validation metrics of the entry are shown in the following graphic. The table shows the number of entries on which the scores are based.



Metric	Whole archive (#Entries)	Similar resolution (#Entries, resolution range(Å))
R_{free}	130704	9185 (1.80-1.76)
Clashscore	141614	10184 (1.80-1.76)
Ramachandran outliers	138981	10051 (1.80-1.76)
Sidechain outliers	138945	10050 (1.80-1.76)
RSRZ outliers	127900	9032 (1.80-1.76)

The table below summarises the geometric issues observed across the polymeric chains and their fit to the electron density. The red, orange, yellow and green segments on the lower bar indicate the fraction of residues that contain outliers for ≥ 3 , 2, 1 and 0 types of geometric quality criteria respectively. A grey segment represents the fraction of residues that are not modelled. The numeric value for each fraction is indicated below the corresponding segment, with a dot representing fractions $\leq 5\%$. The upper red bar (where present) indicates the fraction of residues that have poor fit to the electron density. The numeric value is given above the bar.

Mol	Chain	Length	Quality of chain
1	A	419	<div> <div>2%</div> <div> <div></div> <div>82%</div> <div>11%</div> <div>• 5%</div> </div> </div>
1	B	419	<div> <div>8%</div> <div> <div></div> <div>76%</div> <div>14%</div> <div>• 6%</div> </div> </div>

2 Entry composition [i](#)

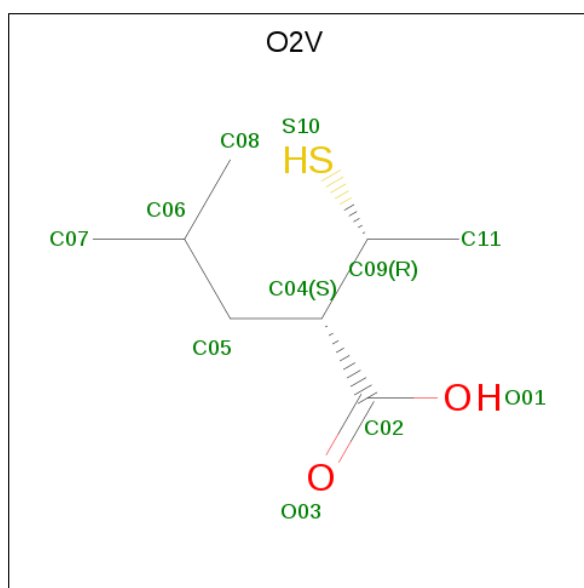
There are 4 unique types of molecules in this entry. The entry contains 6844 atoms, of which 0 are hydrogens and 0 are deuteriums.

In the tables below, the ZeroOcc column contains the number of atoms modelled with zero occupancy, the AltConf column contains the number of residues with at least one atom in alternate conformation and the Trace column contains the number of residues modelled with at most 2 atoms.

- Molecule 1 is a protein called CARBOXYPEPTIDASE A1.

Mol	Chain	Residues	Atoms					ZeroOcc	AltConf	Trace
1	A	396	Total	C	N	O	S	0	2	0
			3181	2043	523	608	7			
1	B	392	Total	C	N	O	S	0	8	0
			3195	2047	529	612	7			

- Molecule 2 is (2S)-4-methyl-2-[(1R)-1-sulfanylethyl]pentanoic acid (three-letter code: O2V) (formula: C₈H₁₆O₂S).



Mol	Chain	Residues	Atoms				ZeroOcc	AltConf
2	A	1	Total	C	O	S	0	0
			11	8	2	1		
2	B	1	Total	C	O	S	0	0
			11	8	2	1		

- Molecule 3 is ZINC ION (three-letter code: ZN) (formula: Zn).

Mol	Chain	Residues	Atoms		ZeroOcc	AltConf
3	B	2	Total 2	Zn 2	0	0
3	A	1	Total 1	Zn 1	0	0

- Molecule 4 is water.

Mol	Chain	Residues	Atoms		ZeroOcc	AltConf
4	A	241	Total 241	O 241	0	0
4	B	202	Total 202	O 202	0	0

- Molecule 1: CARBOXYPEPTIDASE A1



4 Data and refinement statistics

Property	Value	Source
Space group	P 1 21 1	Depositor
Cell constants a, b, c, α , β , γ	53.90 Å 52.54 Å 133.98 Å 90.00° 94.84° 90.00°	Depositor
Resolution (Å)	133.51 – 1.77 43.68 – 1.77	Depositor EDS
% Data completeness (in resolution range)	95.1 (133.51-1.77) 94.1 (43.68-1.77)	Depositor EDS
R_{merge}	0.07	Depositor
R_{sym}	(Not available)	Depositor
$\langle I/\sigma(I) \rangle$ ¹	1.95 (at 1.77 Å)	Xtriage
Refinement program	REFMAC 5.5.0109	Depositor
R, R_{free}	0.147 , 0.209 0.147 , 0.207	Depositor DCC
R_{free} test set	3478 reflections (5.03%)	wwPDB-VP
Wilson B-factor (Å ²)	13.5	Xtriage
Anisotropy	0.371	Xtriage
Bulk solvent k_{sol} (e/Å ³), B_{sol} (Å ²)	0.36 , 38.7	EDS
L-test for twinning ²	$\langle L \rangle = 0.47$, $\langle L^2 \rangle = 0.30$	Xtriage
Estimated twinning fraction	No twinning to report.	Xtriage
F_o, F_c correlation	0.96	EDS
Total number of atoms	6844	wwPDB-VP
Average B, all atoms (Å ²)	17.0	wwPDB-VP

Xtriage's analysis on translational NCS is as follows: *The analyses of the Patterson function reveals a significant off-origin peak that is 42.21 % of the origin peak, indicating pseudo-translational symmetry. The chance of finding a peak of this or larger height randomly in a structure without pseudo-translational symmetry is equal to 2.1102e-04.*

¹Intensities estimated from amplitudes.

²Theoretical values of $\langle |L| \rangle$, $\langle L^2 \rangle$ for acentric reflections are 0.5, 0.333 respectively for untwinned datasets, and 0.375, 0.2 for perfectly twinned datasets.

5 Model quality [i](#)

5.1 Standard geometry [i](#)

Bond lengths and bond angles in the following residue types are not validated in this section: O2V, ZN

The Z score for a bond length (or angle) is the number of standard deviations the observed value is removed from the expected value. A bond length (or angle) with $|Z| > 5$ is considered an outlier worth inspection. RMSZ is the root-mean-square of all Z scores of the bond lengths (or angles).

Mol	Chain	Bond lengths		Bond angles	
		RMSZ	# $ Z > 5$	RMSZ	# $ Z > 5$
1	A	1.14	4/3266 (0.1%)	0.94	6/4439 (0.1%)
1	B	1.13	10/3287 (0.3%)	0.94	10/4467 (0.2%)
All	All	1.14	14/6553 (0.2%)	0.94	16/8906 (0.2%)

All (14) bond length outliers are listed below:

Mol	Chain	Res	Type	Atoms	Z	Observed(Å)	Ideal(Å)
1	B	380	GLU	CD-OE2	15.23	1.42	1.25
1	A	380	GLU	CD-OE2	13.92	1.41	1.25
1	A	273	GLU	CD-OE1	7.19	1.33	1.25
1	B	412[A]	GLU	CD-OE1	-6.81	1.18	1.25
1	B	412[B]	GLU	CD-OE1	-6.81	1.18	1.25
1	B	412[A]	GLU	CG-CD	6.16	1.61	1.51
1	B	412[B]	GLU	CG-CD	6.16	1.61	1.51
1	A	273	GLU	CD-OE2	5.64	1.31	1.25
1	B	100	GLU	CD-OE2	5.60	1.31	1.25
1	A	46	GLU	CB-CG	5.45	1.62	1.52
1	B	192	PHE	CE2-CZ	5.32	1.47	1.37
1	B	273	GLU	CD-OE1	5.09	1.31	1.25
1	B	355	LYS	CE-NZ	5.04	1.61	1.49
1	B	308	TYR	CD2-CE2	5.02	1.46	1.39

All (16) bond angle outliers are listed below:

Mol	Chain	Res	Type	Atoms	Z	Observed(°)	Ideal(°)
1	B	412[A]	GLU	OE1-CD-OE2	-7.70	114.06	123.30
1	B	412[B]	GLU	OE1-CD-OE2	-7.70	114.06	123.30
1	A	67	VAL	CG1-CB-CG2	6.69	121.61	110.90
1	A	323	VAL	CG1-CB-CG2	6.54	121.36	110.90
1	A	382	ARG	NE-CZ-NH1	-6.46	117.07	120.30

Continued on next page...

Continued from previous page...

Mol	Chain	Res	Type	Atoms	Z	Observed(°)	Ideal(°)
1	A	237	ARG	NE-CZ-NH1	-6.35	117.12	120.30
1	B	323	VAL	CG1-CB-CG2	6.22	120.85	110.90
1	B	255	ARG	NE-CZ-NH2	-5.96	117.32	120.30
1	A	237	ARG	NE-CZ-NH2	5.63	123.11	120.30
1	B	380	GLU	OE1-CD-OE2	-5.59	116.59	123.30
1	B	383	ASP	CB-CG-OD1	5.55	123.29	118.30
1	B	323	VAL	CB-CA-C	5.48	121.82	111.40
1	A	255	ARG	NE-CZ-NH2	-5.44	117.58	120.30
1	B	97	LEU	CB-CG-CD1	-5.10	102.32	111.00
1	B	210	LEU	CB-CG-CD1	5.07	119.61	111.00
1	B	181	ARG	NE-CZ-NH2	-5.01	117.80	120.30

There are no chirality outliers.

There are no planarity outliers.

5.2 Too-close contacts ⓘ

In the following table, the Non-H and H(model) columns list the number of non-hydrogen atoms and hydrogen atoms in the chain respectively. The H(added) column lists the number of hydrogen atoms added and optimized by MolProbity. The Clashes column lists the number of clashes within the asymmetric unit, whereas Symm-Clashes lists symmetry related clashes.

Mol	Chain	Non-H	H(model)	H(added)	Clashes	Symm-Clashes
1	A	3181	0	3067	25	0
1	B	3195	0	3078	44	0
2	A	11	0	12	2	0
2	B	11	0	12	2	0
3	A	1	0	0	0	0
3	B	2	0	0	0	0
4	A	241	0	0	1	0
4	B	202	0	0	1	0
All	All	6844	0	6169	71	0

The all-atom clashscore is defined as the number of clashes found per 1000 atoms (including hydrogen atoms). The all-atom clashscore for this structure is 6.

All (71) close contacts within the same asymmetric unit are listed below, sorted by their clash magnitude.

Atom-1	Atom-2	Interatomic distance (Å)	Clash overlap (Å)
1:A:88:ILE:CD1	1:A:88:ILE:CG1	1.76	1.59

Continued on next page...

Continued from previous page...

Atom-1	Atom-2	Interatomic distance (Å)	Clash overlap (Å)
1:A:235:MET:HE3	1:A:389[A]:PHE:HZ	1.45	0.81
1:A:342:SER:O	1:B:386[A]:ARG:HD2	1.81	0.80
1:A:235:MET:HE3	1:A:389[A]:PHE:CZ	2.20	0.77
1:B:38:LYS:HD2	1:B:84:ILE:HD11	1.67	0.74
1:B:235:MET:HE1	1:B:389[B]:PHE:CZ	2.26	0.70
2:B:1419:O2V:C02	2:B:1419:O2V:H082	2.24	0.67
1:B:71:SER:O	1:B:75:VAL:HG13	1.96	0.65
1:B:45:LEU:HD12	1:B:47:HIS:CE1	2.35	0.61
1:B:97:LEU:O	1:B:101:GLN:N	2.33	0.60
1:B:18:GLU:HG3	4:B:2003:HOH:O	2.03	0.58
1:A:17:LYS:HE3	1:A:230:HIS:O	2.03	0.58
1:B:45:LEU:HD12	1:B:47:HIS:HE1	1.69	0.57
1:B:53:TRP:CZ2	1:B:235:MET:HE1	2.40	0.57
1:A:53:TRP:HZ2	1:A:235:MET:HE1	1.69	0.56
1:A:53:TRP:CZ2	1:A:235:MET:CE	2.89	0.55
1:B:22:GLY:O	1:B:72:ILE:HD11	2.06	0.55
1:B:315:PRO:HB2	1:B:323:VAL:HG21	1.89	0.54
1:B:281:ASN:HB3	1:B:287:LYS:HD3	1.88	0.54
1:B:19[B]:ASP:C	1:B:19[B]:ASP:OD1	2.46	0.54
2:A:1419:O2V:H082	2:A:1419:O2V:C02	2.38	0.54
1:A:53:TRP:HZ2	1:A:235:MET:CE	2.22	0.53
1:B:54:ARG:NH1	1:B:309:SER:OG	2.42	0.52
1:B:58:HIS:CE1	1:B:61:SER:HB2	2.45	0.52
1:A:21:VAL:HG23	4:A:2005:HOH:O	2.11	0.51
1:A:38:LYS:HD3	1:A:82:HIS:CD2	2.46	0.50
1:A:172:ILE:HD13	1:A:301:ALA:HB3	1.93	0.50
1:B:53:TRP:HZ2	1:B:235:MET:CE	2.26	0.49
1:B:200:TYR:CE1	1:B:207:THR:HG23	2.47	0.49
1:A:51:ASP:OD2	1:A:235:MET:HE2	2.12	0.49
1:B:79:LEU:HD12	1:B:84:ILE:HB	1.94	0.49
1:A:53:TRP:CZ2	1:A:235:MET:HE3	2.47	0.49
1:B:408:LEU:O	1:B:412[B]:GLU:HG3	2.12	0.49
1:A:142:LEU:HD11	1:A:210:LEU:HD13	1.95	0.49
1:B:27:ARG:HB2	1:B:89[A]:MET:HG3	1.94	0.48
1:A:53:TRP:CZ2	1:A:235:MET:HE1	2.47	0.48
1:B:95:SER:O	1:B:99:GLU:HB2	2.12	0.48
1:B:170:PRO:HB2	1:B:213:LEU:HD23	1.95	0.48
1:A:209:ILE:HD11	1:A:412[B]:GLU:HG2	1.96	0.48
1:B:323:VAL:HG22	1:B:369:TYR:CE2	2.49	0.48
1:B:53:TRP:CZ2	1:B:235:MET:CE	2.96	0.48
1:B:308:TYR:O	1:B:309:SER:CB	2.61	0.48

Continued on next page...

Continued from previous page...

Atom-1	Atom-2	Interatomic distance (Å)	Clash overlap (Å)
1:A:38:LYS:O	1:A:41:GLU:HB2	2.15	0.47
2:B:1419:O2V:C08	2:B:1419:O2V:C02	2.89	0.46
1:A:342:SER:HB3	1:B:386[B]:ARG:NH2	2.30	0.46
1:B:24:GLN:HG3	1:B:72:ILE:CD1	2.45	0.46
1:B:41:GLU:O	1:B:44:ASP:HB2	2.16	0.46
1:B:312:LEU:O	1:B:350:TYR:HA	2.16	0.45
1:B:24:GLN:HG3	1:B:72:ILE:HD13	1.98	0.45
1:B:270:PRO:HA	1:B:275:TYR:CG	2.52	0.45
1:A:53:TRP:HE1	1:A:235:MET:CE	2.29	0.44
1:B:97:LEU:HA	1:B:100:GLU:HB2	1.99	0.44
1:A:162:PHE:CD2	1:A:196:ILE:HG21	2.52	0.44
1:B:308:TYR:O	1:B:309:SER:HB2	2.17	0.43
1:B:73:GLN:O	1:B:77:ILE:HG13	2.18	0.43
1:B:66:ARG:HD3	1:B:235:MET:HE2	2.01	0.43
1:B:67:VAL:HA	1:B:68:PRO:HD3	1.72	0.43
1:A:386:ARG:HD3	1:A:387:TYR:CE2	2.55	0.42
1:B:235:MET:CE	1:B:389[B]:PHE:CZ	3.01	0.42
1:B:20:PHE:CZ	1:B:235:MET:HG2	2.54	0.42
1:B:58:HIS:H	1:B:58:HIS:CD2	2.36	0.42
1:A:33:GLU:O	1:A:37:GLN:HG3	2.20	0.42
1:A:229:THR:HA	1:A:233:ASN:O	2.19	0.42
1:B:69:PHE:HB3	1:B:70:PRO:HD3	2.02	0.41
2:A:1419:O2V:C08	2:A:1419:O2V:C02	2.98	0.41
1:B:183:TRP:HA	1:B:186:GLN:OE1	2.21	0.41
1:A:18:GLU:HB2	1:A:232:THR:O	2.20	0.41
1:B:315:PRO:HG2	1:B:369:TYR:HB2	2.02	0.41
1:B:313:MET:HA	1:B:351:GLY:O	2.21	0.41
1:B:53:TRP:HZ2	1:B:235:MET:HE2	1.85	0.40
1:A:407:LEU:O	1:A:411:MET:HG3	2.21	0.40

There are no symmetry-related clashes.

5.3 Torsion angles ⓘ

5.3.1 Protein backbone ⓘ

In the following table, the Percentiles column shows the percent Ramachandran outliers of the chain as a percentile score with respect to all X-ray entries followed by that with respect to entries of similar resolution.

The Analysed column shows the number of residues for which the backbone conformation was analysed, and the total number of residues.

Mol	Chain	Analysed	Favoured	Allowed	Outliers	Percentiles	
1	A	394/419 (94%)	381 (97%)	12 (3%)	1 (0%)	41	25
1	B	397/419 (95%)	381 (96%)	14 (4%)	2 (0%)	29	14
All	All	791/838 (94%)	762 (96%)	26 (3%)	3 (0%)	34	19

All (3) Ramachandran outliers are listed below:

Mol	Chain	Res	Type
1	A	309	SER
1	B	309	SER
1	B	100	GLU

5.3.2 Protein sidechains ⓘ

In the following table, the Percentiles column shows the percent sidechain outliers of the chain as a percentile score with respect to all X-ray entries followed by that with respect to entries of similar resolution.

The Analysed column shows the number of residues for which the sidechain conformation was analysed, and the total number of residues.

Mol	Chain	Analysed	Rotameric	Outliers	Percentiles	
1	A	345/360 (96%)	330 (96%)	15 (4%)	29	12
1	B	348/360 (97%)	327 (94%)	21 (6%)	19	6
All	All	693/720 (96%)	657 (95%)	36 (5%)	24	8

All (36) residues with a non-rotameric sidechain are listed below:

Mol	Chain	Res	Type
1	A	17	LYS
1	A	26	LEU
1	A	42	LEU
1	A	46	GLU
1	A	50	LEU
1	A	54	ARG
1	A	73	GLN
1	A	97	LEU
1	A	102	GLU
1	A	103	GLN
1	A	263	LEU
1	A	276	HIS
1	A	323	VAL

Continued on next page...

Continued from previous page...

Mol	Chain	Res	Type
1	A	358	TYR
1	A	374	LYS
1	B	17	LYS
1	B	18	GLU
1	B	26	LEU
1	B	29	SER
1	B	44	ASP
1	B	45	LEU
1	B	46	GLU
1	B	50	LEU
1	B	54	ARG
1	B	67	VAL
1	B	75	VAL
1	B	79	LEU
1	B	87	GLU
1	B	88	ILE
1	B	210	LEU
1	B	321	GLU
1	B	323	VAL
1	B	358	TYR
1	B	386[A]	ARG
1	B	386[B]	ARG
1	B	386[C]	ARG

Some sidechains can be flipped to improve hydrogen bonding and reduce clashes. All (6) such sidechains are listed below:

Mol	Chain	Res	Type
1	A	82	HIS
1	A	103	GLN
1	B	24	GLN
1	B	35	GLN
1	B	47	HIS
1	B	58	HIS

5.3.3 RNA ⓘ

There are no RNA molecules in this entry.

5.4 Non-standard residues in protein, DNA, RNA chains ⓘ

There are no non-standard protein/DNA/RNA residues in this entry.

5.5 Carbohydrates ⓘ

There are no carbohydrates in this entry.

5.6 Ligand geometry ⓘ

Of 5 ligands modelled in this entry, 3 are monoatomic - leaving 2 for Mogul analysis.

In the following table, the Counts columns list the number of bonds (or angles) for which Mogul statistics could be retrieved, the number of bonds (or angles) that are observed in the model and the number of bonds (or angles) that are defined in the Chemical Component Dictionary. The Link column lists molecule types, if any, to which the group is linked. The Z score for a bond length (or angle) is the number of standard deviations the observed value is removed from the expected value. A bond length (or angle) with $|Z| > 2$ is considered an outlier worth inspection. RMSZ is the root-mean-square of all Z scores of the bond lengths (or angles).

Mol	Type	Chain	Res	Link	Bond lengths			Bond angles		
					Counts	RMSZ	# Z > 2	Counts	RMSZ	# Z > 2
2	O2V	A	1419	1,3	5,10,10	1.44	1 (20%)	4,13,13	2.78	1 (25%)
2	O2V	B	1419	1,3	5,10,10	0.64	0	4,13,13	0.64	0

In the following table, the Chirals column lists the number of chiral outliers, the number of chiral centers analysed, the number of these observed in the model and the number defined in the Chemical Component Dictionary. Similar counts are reported in the Torsion and Rings columns. '-' means no outliers of that kind were identified.

Mol	Type	Chain	Res	Link	Chirals	Torsions	Rings
2	O2V	A	1419	1,3	-	3/6/12/12	-
2	O2V	B	1419	1,3	-	4/6/12/12	-

All (1) bond length outliers are listed below:

Mol	Chain	Res	Type	Atoms	Z	Observed(Å)	Ideal(Å)
2	A	1419	O2V	C05-C04	-2.50	1.51	1.54

All (1) bond angle outliers are listed below:

Mol	Chain	Res	Type	Atoms	Z	Observed(°)	Ideal(°)
2	A	1419	O2V	C04-C05-C06	-5.21	108.92	115.91

There are no chirality outliers.

All (7) torsion outliers are listed below:

Mol	Chain	Res	Type	Atoms
2	A	1419	O2V	C05-C04-C09-C11
2	A	1419	O2V	C04-C05-C06-C07
2	B	1419	O2V	C05-C04-C09-C11
2	A	1419	O2V	C04-C05-C06-C08
2	B	1419	O2V	C04-C05-C06-C08
2	B	1419	O2V	C04-C05-C06-C07
2	B	1419	O2V	C02-C04-C09-C11

There are no ring outliers.

2 monomers are involved in 4 short contacts:

Mol	Chain	Res	Type	Clashes	Symm-Clashes
2	A	1419	O2V	2	0
2	B	1419	O2V	2	0

5.7 Other polymers [i](#)

There are no such residues in this entry.

5.8 Polymer linkage issues [i](#)

There are no chain breaks in this entry.

6 Fit of model and data ⓘ

6.1 Protein, DNA and RNA chains ⓘ

In the following table, the column labelled ‘#RSRZ> 2’ contains the number (and percentage) of RSRZ outliers, followed by percent RSRZ outliers for the chain as percentile scores relative to all X-ray entries and entries of similar resolution. The OWAB column contains the minimum, median, 95th percentile and maximum values of the occupancy-weighted average B-factor per residue. The column labelled ‘Q< 0.9’ lists the number of (and percentage) of residues with an average occupancy less than 0.9.

Mol	Chain	Analysed	<RSRZ>	#RSRZ>2	OWAB(Å ²)	Q<0.9
1	A	396/419 (94%)	-0.16	9 (2%) 60 60	6, 11, 26, 52	0
1	B	392/419 (93%)	0.13	32 (8%) 11 11	6, 14, 49, 59	0
All	All	788/838 (94%)	-0.01	41 (5%) 27 26	6, 12, 40, 59	0

All (41) RSRZ outliers are listed below:

Mol	Chain	Res	Type	RSRZ
1	A	105	PHE	8.4
1	B	101	GLN	7.0
1	B	84	ILE	6.9
1	B	98	ASP	6.0
1	B	39	VAL	4.7
1	B	78	PHE	4.6
1	B	42	LEU	4.3
1	B	81	SER	4.1
1	B	247	LEU	4.0
1	A	245	GLY	3.9
1	A	244	ALA	3.8
1	B	245	GLY	3.7
1	B	77	ILE	3.5
1	B	80	GLU	3.3
1	B	38	LYS	3.3
1	B	35	GLN	3.2
1	B	34	ALA	3.2
1	B	82	HIS	3.2
1	B	86	TYR	3.2
1	B	83	GLY	3.1
1	B	31	ALA	3.1
1	B	32	ASP	3.1
1	B	30	VAL	2.8
1	B	79	LEU	2.7

Continued on next page...

Continued from previous page...

Mol	Chain	Res	Type	RSRZ
1	B	69	PHE	2.6
1	A	112	ARG	2.6
1	B	244	ALA	2.4
1	A	99	GLU	2.4
1	B	75	VAL	2.4
1	A	141	HIS	2.4
1	A	101	GLN	2.3
1	B	59	PRO	2.3
1	A	79	LEU	2.3
1	B	386[A]	ARG	2.2
1	B	44	ASP	2.2
1	B	85	SER	2.1
1	B	327[A]	ASP	2.1
1	B	100	GLU	2.1
1	B	141	HIS	2.1
1	B	29	SER	2.1
1	A	102	GLU	2.0

6.2 Non-standard residues in protein, DNA, RNA chains ⓘ

There are no non-standard protein/DNA/RNA residues in this entry.

6.3 Carbohydrates ⓘ

There are no carbohydrates in this entry.

6.4 Ligands ⓘ

In the following table, the Atoms column lists the number of modelled atoms in the group and the number defined in the chemical component dictionary. The B-factors column lists the minimum, median, 95th percentile and maximum values of B factors of atoms in the group. The column labelled 'Q< 0.9' lists the number of atoms with occupancy less than 0.9.

Mol	Type	Chain	Res	Atoms	RSCC	RSR	B-factors(\AA^2)	Q<0.9
2	O2V	A	1419	11/11	0.95	0.12	13,20,24,27	0
2	O2V	B	1419	11/11	0.97	0.12	15,23,26,28	0
3	ZN	A	1420	1/1	1.00	0.09	10,10,10,10	0
3	ZN	B	1421	1/1	1.00	0.04	13,13,13,13	0
3	ZN	B	1420	1/1	1.00	0.06	11,11,11,11	0

6.5 Other polymers

There are no such residues in this entry.