



wwPDB X-ray Structure Validation Summary Report ⓘ

Oct 31, 2021 – 09:12 AM EDT

PDB ID : 1UKS
Title : Crystal structure of F183L/F259L mutant cyclodextrin glucanotransferase complexed with a pseudo-maltotetraose derived from acarbose
Authors : Haga, K.; Kanai, R.; Sakamoto, O.; Harata, K.; Yamane, K.
Deposited on : 2003-09-01
Resolution : 1.90 Å(reported)

This is a wwPDB X-ray Structure Validation Summary Report for a publicly released PDB entry.

We welcome your comments at validation@mail.wwpdb.org

A user guide is available at

<https://www.wwpdb.org/validation/2017/XrayValidationReportHelp>

with specific help available everywhere you see the ⓘ symbol.

The following versions of software and data (see [references ⓘ](#)) were used in the production of this report:

MolProbity	:	4.02b-467
Mogul	:	1.8.5 (274361), CSD as541be (2020)
Xtriage (Phenix)	:	1.13
EDS	:	2.23.2
Percentile statistics	:	20191225.v01 (using entries in the PDB archive December 25th 2019)
Refmac	:	5.8.0158
CCP4	:	7.0.044 (Gargrove)
Ideal geometry (proteins)	:	Engh & Huber (2001)
Ideal geometry (DNA, RNA)	:	Parkinson et al. (1996)
Validation Pipeline (wwPDB-VP)	:	2.23.2

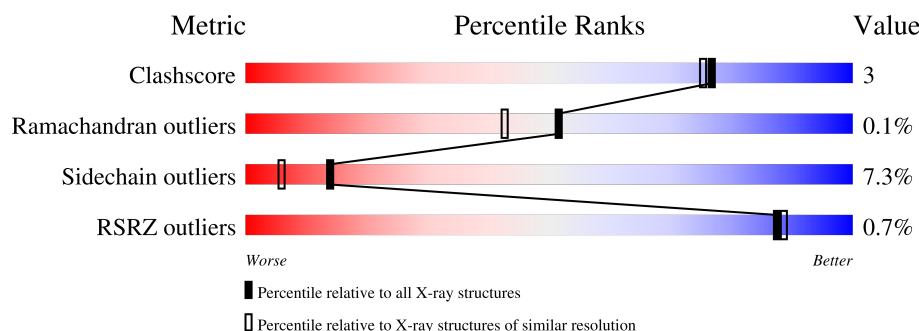
1 Overall quality at a glance

The following experimental techniques were used to determine the structure:

X-RAY DIFFRACTION

The reported resolution of this entry is 1.90 Å.

Percentile scores (ranging between 0-100) for global validation metrics of the entry are shown in the following graphic. The table shows the number of entries on which the scores are based.



Metric	Whole archive (#Entries)	Similar resolution (#Entries, resolution range(Å))
Clashscore	141614	6847 (1.90-1.90)
Ramachandran outliers	138981	6760 (1.90-1.90)
Sidechain outliers	138945	6760 (1.90-1.90)
RSRZ outliers	127900	6082 (1.90-1.90)

The table below summarises the geometric issues observed across the polymeric chains and their fit to the electron density. The red, orange, yellow and green segments of the lower bar indicate the fraction of residues that contain outliers for ≥ 3 , 2, 1 and 0 types of geometric quality criteria respectively. A grey segment represents the fraction of residues that are not modelled. The numeric value for each fraction is indicated below the corresponding segment, with a dot representing fractions $\leq 5\%$. The upper red bar (where present) indicates the fraction of residues that have poor fit to the electron density. The numeric value is given above the bar.

Mol	Chain	Length	Quality of chain
1	A	686	 84% 14% •
1	B	686	 83% 14% •
2	C	2	 100%
2	D	2	 100%

The following table lists non-polymeric compounds, carbohydrate monomers and non-standard residues in protein, DNA, RNA chains that are outliers for geometric or electron-density-fit criteria:

Mol	Type	Chain	Res	Chirality	Geometry	Clashes	Electron density
2	GAL	C	1	X	-	-	X
2	GLD	C	2	-	-	-	X
2	GAL	D	1	X	-	-	X
2	GLD	D	2	-	-	-	X
3	GLC	A	701	-	-	-	X
3	GLC	B	705	-	-	-	X
4	ACI	A	702	-	-	-	X
4	ACI	B	706	-	-	-	X

2 Entry composition

There are 6 unique types of molecules in this entry. The entry contains 11443 atoms, of which 0 are hydrogens and 0 are deuteriums.

In the tables below, the ZeroOcc column contains the number of atoms modelled with zero occupancy, the AltConf column contains the number of residues with at least one atom in alternate conformation and the Trace column contains the number of residues modelled with at most 2 atoms.

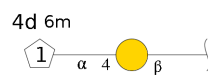
- Molecule 1 is a protein called Cyclomaltodextrin glucanotransferase.

Mol	Chain	Residues	Atoms					ZeroOcc	AltConf	Trace
1	A	686	Total	C	N	O	S	0	0	0
			5306	3348	906	1036	16			
1	B	686	Total	C	N	O	S	0	0	0
			5306	3348	906	1036	16			

There are 8 discrepancies between the modelled and reference sequences:

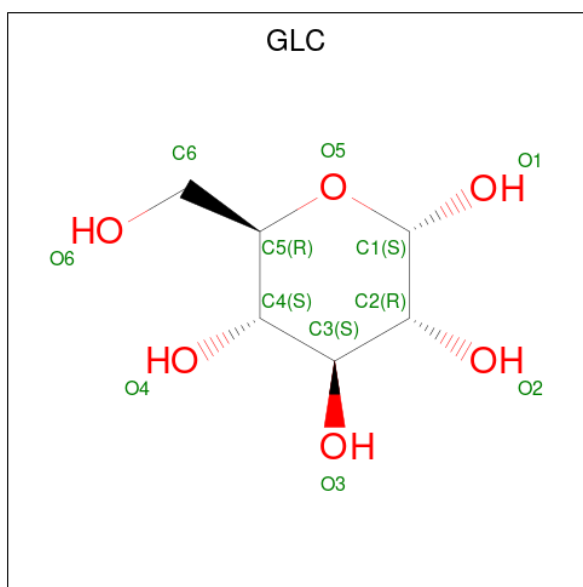
Chain	Residue	Modelled	Actual	Comment	Reference
A	183	LEU	PHE	engineered mutation	UNP P05618
A	259	LEU	PHE	engineered mutation	UNP P05618
A	452	PRO	ARG	SEE REMARK 999	UNP P05618
A	454	GLY	ALA	SEE REMARK 999	UNP P05618
B	183	LEU	PHE	engineered mutation	UNP P05618
B	259	LEU	PHE	engineered mutation	UNP P05618
B	452	PRO	ARG	SEE REMARK 999	UNP P05618
B	454	GLY	ALA	SEE REMARK 999	UNP P05618

- Molecule 2 is an oligosaccharide called 4,6-dideoxy-alpha-D-xylo-hexopyranose-(1-4)-beta-D-galactopyranose.



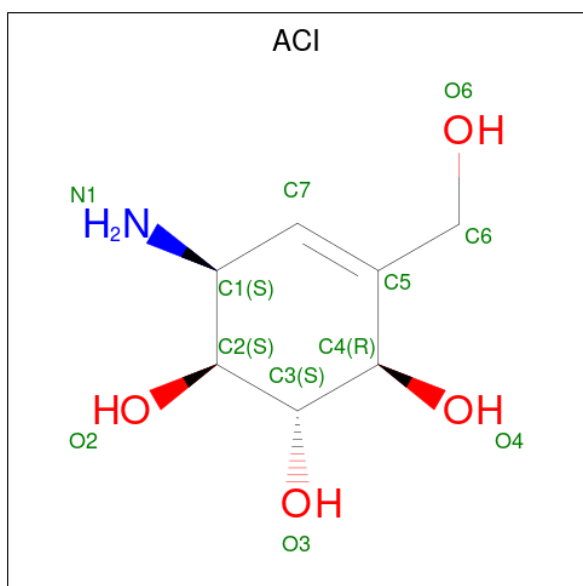
Mol	Chain	Residues	Atoms			ZeroOcc	AltConf	Trace
2	C	2	Total	C	O	0	0	0
			21	12	9			
2	D	2	Total	C	O	0	0	0
			21	12	9			

- Molecule 3 is alpha-D-glucopyranose (three-letter code: GLC) (formula: C₆H₁₂O₆).



Mol	Chain	Residues	Atoms			ZeroOcc	AltConf
3	A	1	Total	C	O	0	0
			11	6	5		
3	B	1	Total	C	O	0	0
			11	6	5		

- Molecule 4 is 6-AMINO-4-HYDROXYMETHYL-CYCLOHEX-4-ENE-1,2,3-TRIOL (three-letter code: ACI) (formula: $C_7H_{13}NO_4$).



Mol	Chain	Residues	Atoms				ZeroOcc	AltConf
4	A	1	Total	C	N	O	0	0
			12	7	1	4		

Continued on next page...

Continued from previous page...

Mol	Chain	Residues	Atoms				ZeroOcc	AltConf
4	B	1	Total	C	N	O	0	0
			12	7	1	4		

- Molecule 5 is CALCIUM ION (three-letter code: CA) (formula: Ca).

Mol	Chain	Residues	Atoms		ZeroOcc	AltConf
5	A	2	Total	Ca	0	0
			2	2		
5	B	2	Total	Ca	0	0
			2	2		

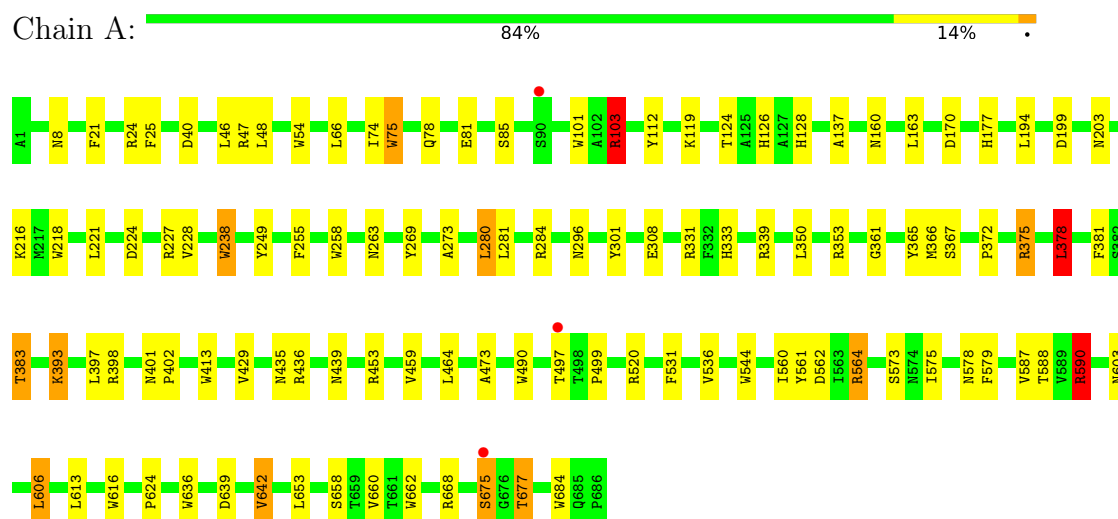
- Molecule 6 is water.

Mol	Chain	Residues	Atoms		ZeroOcc	AltConf
6	A	386	Total	O	0	0
			386	386		
6	B	353	Total	O	0	0
			353	353		

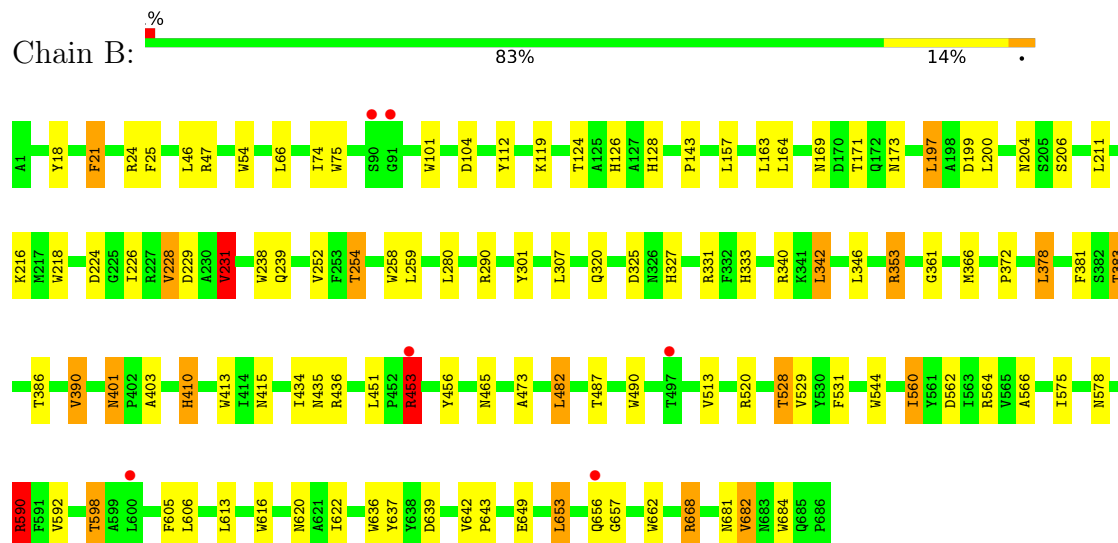
3 Residue-property plots

These plots are drawn for all protein, RNA, DNA and oligosaccharide chains in the entry. The first graphic for a chain summarises the proportions of the various outlier classes displayed in the second graphic. The second graphic shows the sequence view annotated by issues in geometry and electron density. Residues are color-coded according to the number of geometric quality criteria for which they contain at least one outlier: green = 0, yellow = 1, orange = 2 and red = 3 or more. A red dot above a residue indicates a poor fit to the electron density ($RSRZ > 2$). Stretches of 2 or more consecutive residues without any outlier are shown as a green connector. Residues present in the sample, but not in the model, are shown in grey.

• Molecule 1: Cyclomaltodextrin glucanotransferase



• Molecule 1: Cyclomaltodextrin glucanotransferase



• Molecule 2: 4,6-dideoxy-alpha-D-xylo-hexopyranose-(1-4)-beta-D-galactopyranose



GAL1
GLD2

- Molecule 2: 4,6-dideoxy-alpha-D-xylo-hexopyranose-(1-4)-beta-D-galactopyranose

Chain D:

100%

GAL1
GLD2

4 Data and refinement statistics

Property	Value	Source
Space group	P 1	Depositor
Cell constants a, b, c, α , β , γ	64.85Å 74.53Å 78.94Å 85.19° 104.86° 101.04°	Depositor
Resolution (Å)	10.00 – 1.90 19.62 – 1.86	Depositor EDS
% Data completeness (in resolution range)	78.3 (10.00-1.90) 88.3 (19.62-1.86)	Depositor EDS
R_{merge}	0.05	Depositor
R_{sym}	(Not available)	Depositor
$\langle I/\sigma(I) \rangle$ ¹	2.73 (at 1.86Å)	Xtriage
Refinement program	X-PLOR 3.1	Depositor
R, R_{free}	0.162 , 0.215 0.168 , (Not available)	Depositor DCC
R_{free} test set	No test flags present.	wwPDB-VP
Wilson B-factor (Å ²)	18.7	Xtriage
Anisotropy	0.126	Xtriage
Bulk solvent k_{sol} (e/Å ³), B_{sol} (Å ²)	0.31 , 57.0	EDS
L-test for twinning ²	$\langle L \rangle = 0.51$, $\langle L^2 \rangle = 0.34$	Xtriage
Estimated twinning fraction	No twinning to report.	Xtriage
F_o, F_c correlation	0.96	EDS
Total number of atoms	11443	wwPDB-VP
Average B, all atoms (Å ²)	18.0	wwPDB-VP

Xtriage's analysis on translational NCS is as follows: *The largest off-origin peak in the Patterson function is 5.09% of the height of the origin peak. No significant pseudotranslation is detected.*

¹Intensities estimated from amplitudes.

²Theoretical values of $\langle |L| \rangle$, $\langle L^2 \rangle$ for acentric reflections are 0.5, 0.333 respectively for untwinned datasets, and 0.375, 0.2 for perfectly twinned datasets.

5 Model quality

5.1 Standard geometry

Bond lengths and bond angles in the following residue types are not validated in this section: GLC, GAL, GLD, ACI, CA

The Z score for a bond length (or angle) is the number of standard deviations the observed value is removed from the expected value. A bond length (or angle) with $|Z| > 5$ is considered an outlier worth inspection. RMSZ is the root-mean-square of all Z scores of the bond lengths (or angles).

Mol	Chain	Bond lengths		Bond angles	
		RMSZ	# Z >5	RMSZ	# Z >5
1	A	0.76	0/5438	1.43	67/7419 (0.9%)
1	B	0.76	0/5438	1.42	68/7419 (0.9%)
All	All	0.76	0/10876	1.43	135/14838 (0.9%)

There are no bond length outliers.

The worst 5 of 135 bond angle outliers are listed below:

Mol	Chain	Res	Type	Atoms	Z	Observed(°)	Ideal(°)
1	A	668	ARG	NE-CZ-NH1	-19.39	110.60	120.30
1	B	331	ARG	NE-CZ-NH2	-16.42	112.09	120.30
1	A	668	ARG	NE-CZ-NH2	15.78	128.19	120.30
1	B	331	ARG	NE-CZ-NH1	14.11	127.35	120.30
1	A	331	ARG	NE-CZ-NH1	13.18	126.89	120.30

There are no chirality outliers.

There are no planarity outliers.

5.2 Too-close contacts

In the following table, the Non-H and H(model) columns list the number of non-hydrogen atoms and hydrogen atoms in the chain respectively. The H(added) column lists the number of hydrogen atoms added and optimized by MolProbity. The Clashes column lists the number of clashes within the asymmetric unit, whereas Symm-Clashes lists symmetry-related clashes.

Mol	Chain	Non-H	H(model)	H(added)	Clashes	Symm-Clashes
1	A	5306	0	5054	32	0
1	B	5306	0	5054	32	0
2	C	21	0	20	0	0
2	D	21	0	20	2	0

Continued on next page...

Continued from previous page...

Mol	Chain	Non-H	H(model)	H(added)	Clashes	Symm-Clashes
3	A	11	0	10	0	0
3	B	11	0	10	0	0
4	A	12	0	11	0	0
4	B	12	0	10	1	0
5	A	2	0	0	0	0
5	B	2	0	0	0	0
6	A	386	0	0	3	0
6	B	353	0	0	2	0
All	All	11443	0	10189	63	0

The all-atom clashscore is defined as the number of clashes found per 1000 atoms (including hydrogen atoms). The all-atom clashscore for this structure is 3.

The worst 5 of 63 close contacts within the same asymmetric unit are listed below, sorted by their clash magnitude.

Atom-1	Atom-2	Interatomic distance (Å)	Clash overlap (Å)
1:B:528:THR:HG23	1:B:566:ALA:HB3	1.69	0.74
1:A:560:ILE:HD12	1:A:578:ASN:HA	1.71	0.72
1:A:203:ASN:O	1:A:677:THR:HG21	1.92	0.69
1:B:231:VAL:HG22	1:B:239:GLN:HE22	1.59	0.67
1:B:226:ILE:HB	1:B:254:THR:HB	1.77	0.66

There are no symmetry-related clashes.

5.3 Torsion angles [i](#)

5.3.1 Protein backbone [i](#)

In the following table, the Percentiles column shows the percent Ramachandran outliers of the chain as a percentile score with respect to all X-ray entries followed by that with respect to entries of similar resolution.

The Analysed column shows the number of residues for which the backbone conformation was analysed, and the total number of residues.

Mol	Chain	Analysed	Favoured	Allowed	Outliers	Percentiles	
1	A	684/686 (100%)	664 (97%)	20 (3%)	0	100	100
1	B	684/686 (100%)	667 (98%)	16 (2%)	1 (0%)	51	42
All	All	1368/1372 (100%)	1331 (97%)	36 (3%)	1 (0%)	51	42

All (1) Ramachandran outliers are listed below:

Mol	Chain	Res	Type
1	B	657	GLY

5.3.2 Protein sidechains [i](#)

In the following table, the Percentiles column shows the percent sidechain outliers of the chain as a percentile score with respect to all X-ray entries followed by that with respect to entries of similar resolution.

The Analysed column shows the number of residues for which the sidechain conformation was analysed, and the total number of residues.

Mol	Chain	Analysed	Rotameric	Outliers	Percentiles	
1	A	564/564 (100%)	528 (94%)	36 (6%)	17	8
1	B	564/564 (100%)	518 (92%)	46 (8%)	11	4
All	All	1128/1128 (100%)	1046 (93%)	82 (7%)	14	6

5 of 82 residues with a non-rotameric sidechain are listed below:

Mol	Chain	Res	Type
1	B	307	LEU
1	B	513	VAL
1	B	346	LEU
1	B	401	ASN
1	B	590	ARG

Sometimes sidechains can be flipped to improve hydrogen bonding and reduce clashes. 5 of 29 such sidechains are listed below:

Mol	Chain	Res	Type
1	B	169	ASN
1	B	615	ASN
1	B	270	HIS
1	B	465	ASN
1	B	239	GLN

5.3.3 RNA [i](#)

There are no RNA molecules in this entry.

5.4 Non-standard residues in protein, DNA, RNA chains ⓘ

There are no non-standard protein/DNA/RNA residues in this entry.

5.5 Carbohydrates ⓘ

4 monosaccharides are modelled in this entry.

In the following table, the Counts columns list the number of bonds (or angles) for which Mogul statistics could be retrieved, the number of bonds (or angles) that are observed in the model and the number of bonds (or angles) that are defined in the Chemical Component Dictionary. The Link column lists molecule types, if any, to which the group is linked. The Z score for a bond length (or angle) is the number of standard deviations the observed value is removed from the expected value. A bond length (or angle) with $|Z| > 2$ is considered an outlier worth inspection. RMSZ is the root-mean-square of all Z scores of the bond lengths (or angles).

Mol	Type	Chain	Res	Link	Bond lengths			Bond angles		
					Counts	RMSZ	$\# Z > 2$	Counts	RMSZ	$\# Z > 2$
2	GAL	C	1	2	12,12,12	2.22	6 (50%)	17,17,17	2.47	7 (41%)
2	GLD	C	2	2,4	9,9,10	3.02	4 (44%)	10,12,14	1.96	3 (30%)
2	GAL	D	1	2	12,12,12	2.42	6 (50%)	17,17,17	2.46	7 (41%)
2	GLD	D	2	2,4	9,9,10	2.19	3 (33%)	10,12,14	2.09	6 (60%)

In the following table, the Chirals column lists the number of chiral outliers, the number of chiral centers analysed, the number of these observed in the model and the number defined in the Chemical Component Dictionary. Similar counts are reported in the Torsion and Rings columns. '-' means no outliers of that kind were identified.

Mol	Type	Chain	Res	Link	Chirals	Torsions	Rings
2	GAL	C	1	2	1/1/5/5	0/2/22/22	0/1/1/1
2	GLD	C	2	2,4	-	-	0/1/1/1
2	GAL	D	1	2	1/1/5/5	0/2/22/22	0/1/1/1
2	GLD	D	2	2,4	-	-	0/1/1/1

The worst 5 of 19 bond length outliers are listed below:

Mol	Chain	Res	Type	Atoms	Z	Observed(Å)	Ideal(Å)
2	C	2	GLD	O5-C5	5.07	1.48	1.43
2	C	1	GAL	C3-C2	4.03	1.62	1.52
2	C	2	GLD	O5-C1	3.94	1.50	1.43
2	C	2	GLD	C4-C5	3.79	1.58	1.51
2	C	2	GLD	C3-C2	3.74	1.57	1.52

The worst 5 of 23 bond angle outliers are listed below:

Mol	Chain	Res	Type	Atoms	Z	Observed(°)	Ideal(°)
2	D	1	GAL	O2-C2-C1	6.68	124.64	109.16
2	C	1	GAL	C1-C2-C3	-5.60	98.69	110.31
2	C	1	GAL	O2-C2-C3	5.08	122.10	110.35
2	C	2	GLD	C4-C3-C2	-4.26	105.00	110.27
2	D	1	GAL	C4-C3-C2	-3.87	104.07	110.82

All (2) chirality outliers are listed below:

Mol	Chain	Res	Type	Atom
2	C	1	GAL	C4
2	D	1	GAL	C4

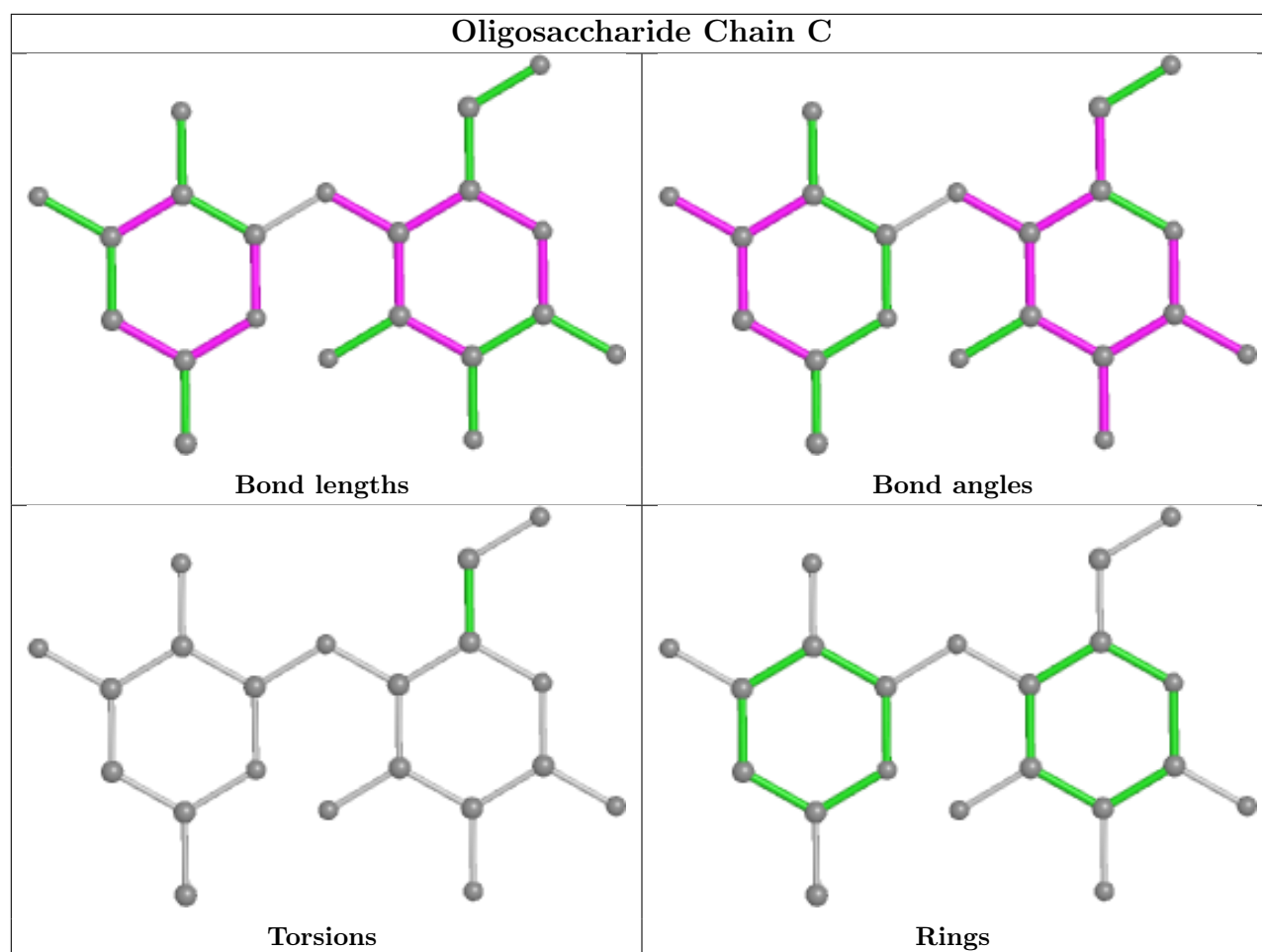
There are no torsion outliers.

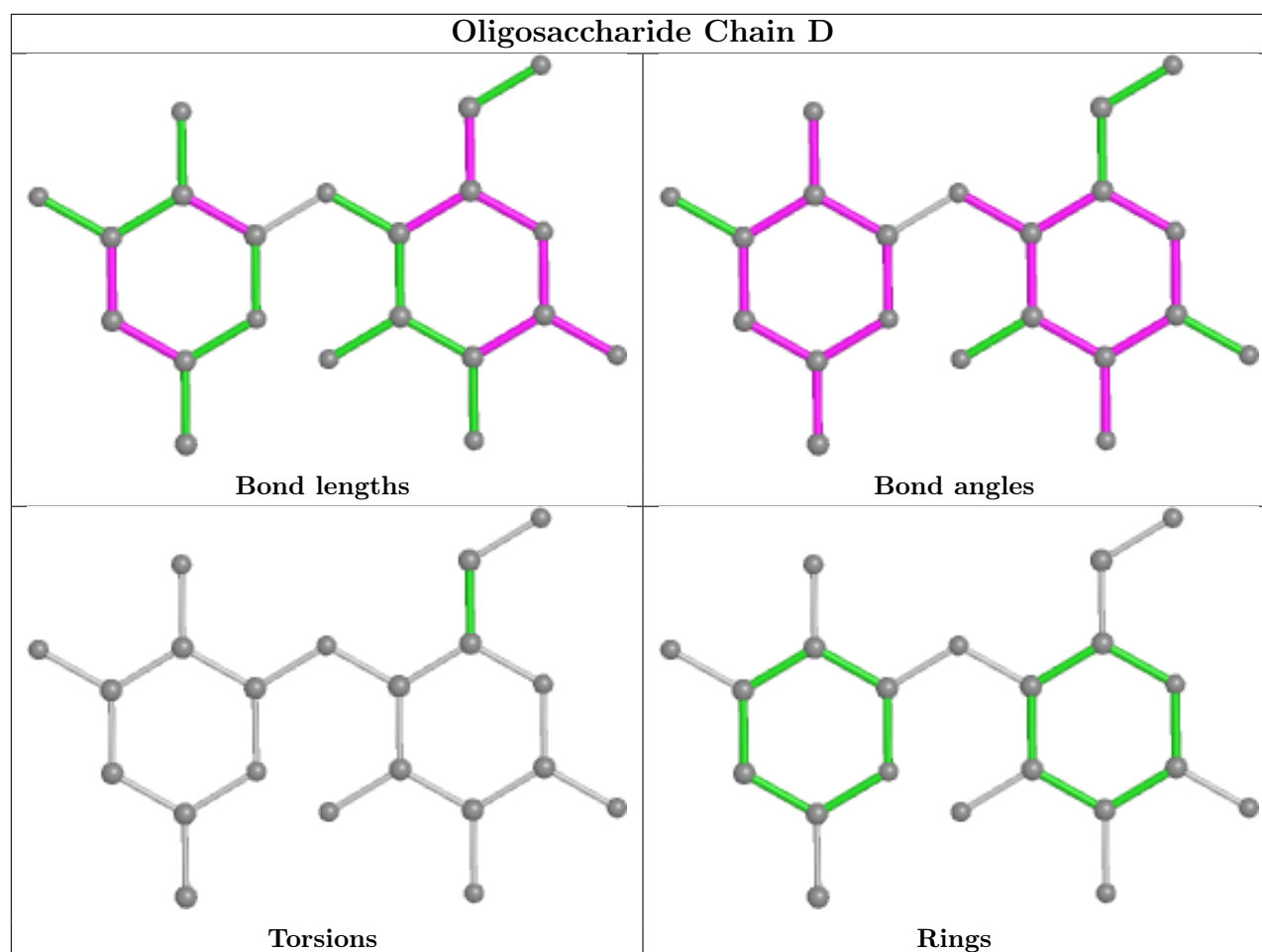
There are no ring outliers.

2 monomers are involved in 2 short contacts:

Mol	Chain	Res	Type	Clashes	Symm-Clashes
2	D	2	GLD	1	0
2	D	1	GAL	1	0

The following is a two-dimensional graphical depiction of Mogul quality analysis of bond lengths, bond angles, torsion angles, and ring geometry for oligosaccharide.





5.6 Ligand geometry [i](#)

Of 8 ligands modelled in this entry, 4 are monoatomic - leaving 4 for Mogul analysis.

In the following table, the Counts columns list the number of bonds (or angles) for which Mogul statistics could be retrieved, the number of bonds (or angles) that are observed in the model and the number of bonds (or angles) that are defined in the Chemical Component Dictionary. The Link column lists molecule types, if any, to which the group is linked. The Z score for a bond length (or angle) is the number of standard deviations the observed value is removed from the expected value. A bond length (or angle) with $|Z| > 2$ is considered an outlier worth inspection. RMSZ is the root-mean-square of all Z scores of the bond lengths (or angles).

Mol	Type	Chain	Res	Link	Bond lengths			Bond angles		
					Counts	RMSZ	$\# Z > 2$	Counts	RMSZ	$\# Z > 2$
4	ACI	B	706	3,2	12,12,12	2.48	4 (33%)	11,17,17	1.60	3 (27%)
4	ACI	A	702	3,2	12,12,12	2.64	4 (33%)	11,17,17	1.91	3 (27%)
3	GLC	A	701	4	11,11,12	1.82	4 (36%)	15,15,17	1.93	4 (26%)
3	GLC	B	705	4	11,11,12	1.59	4 (36%)	15,15,17	1.54	4 (26%)

In the following table, the Chirals column lists the number of chiral outliers, the number of chiral centers analysed, the number of these observed in the model and the number defined in the Chemical Component Dictionary. Similar counts are reported in the Torsion and Rings columns. '-' means no outliers of that kind were identified.

Mol	Type	Chain	Res	Link	Chirals	Torsions	Rings
4	ACI	B	706	3,2	-	0/2/22/22	0/1/1/1
4	ACI	A	702	3,2	-	0/2/22/22	0/1/1/1
3	GLC	A	701	4	-	2/2/19/22	0/1/1/1
3	GLC	B	705	4	-	2/2/19/22	0/1/1/1

The worst 5 of 16 bond length outliers are listed below:

Mol	Chain	Res	Type	Atoms	Z	Observed(Å)	Ideal(Å)
4	B	706	ACI	C7-C5	5.67	1.40	1.32
4	A	702	ACI	C7-C5	5.56	1.40	1.32
4	A	702	ACI	C4-C5	5.10	1.55	1.51
4	B	706	ACI	C4-C5	3.86	1.54	1.51
4	B	706	ACI	C2-C1	3.37	1.57	1.52

The worst 5 of 14 bond angle outliers are listed below:

Mol	Chain	Res	Type	Atoms	Z	Observed(°)	Ideal(°)
3	A	701	GLC	C1-O5-C5	4.83	118.73	112.19
3	A	701	GLC	O5-C1-C2	3.64	116.40	110.77
4	A	702	ACI	O6-C6-C5	-3.40	104.37	112.50
4	B	706	ACI	C7-C1-N1	-3.08	105.17	110.71
4	A	702	ACI	O4-C4-C5	-2.92	105.20	110.82

There are no chirality outliers.

All (4) torsion outliers are listed below:

Mol	Chain	Res	Type	Atoms
3	B	705	GLC	O5-C5-C6-O6
3	B	705	GLC	C4-C5-C6-O6
3	A	701	GLC	O5-C5-C6-O6
3	A	701	GLC	C4-C5-C6-O6

There are no ring outliers.

1 monomer is involved in 1 short contact:

Mol	Chain	Res	Type	Clashes	Symm-Clashes
4	B	706	ACI	1	0

5.7 Other polymers [i](#)

There are no such residues in this entry.

5.8 Polymer linkage issues [i](#)

There are no chain breaks in this entry.

6 Fit of model and data [i](#)

6.1 Protein, DNA and RNA chains [i](#)

In the following table, the column labelled ‘#RSRZ> 2’ contains the number (and percentage) of RSRZ outliers, followed by percent RSRZ outliers for the chain as percentile scores relative to all X-ray entries and entries of similar resolution. The OWAB column contains the minimum, median, 95th percentile and maximum values of the occupancy-weighted average B-factor per residue. The column labelled ‘Q< 0.9’ lists the number of (and percentage) of residues with an average occupancy less than 0.9.

Mol	Chain	Analysed	<RSRZ>	#RSRZ>2	OWAB(Å ²)	Q<0.9
1	A	686/686 (100%)	-0.53	3 (0%) 92 93	8, 15, 27, 49	0
1	B	686/686 (100%)	-0.42	6 (0%) 84 85	9, 17, 34, 54	0
All	All	1372/1372 (100%)	-0.47	9 (0%) 87 88	8, 16, 32, 54	0

The worst 5 of 9 RSRZ outliers are listed below:

Mol	Chain	Res	Type	RSRZ
1	B	600	LEU	4.7
1	A	675	SER	3.7
1	A	90	SER	3.6
1	B	497	THR	2.8
1	B	90	SER	2.8

6.2 Non-standard residues in protein, DNA, RNA chains [i](#)

There are no non-standard protein/DNA/RNA residues in this entry.

6.3 Carbohydrates [i](#)

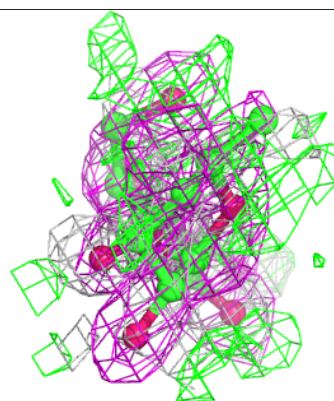
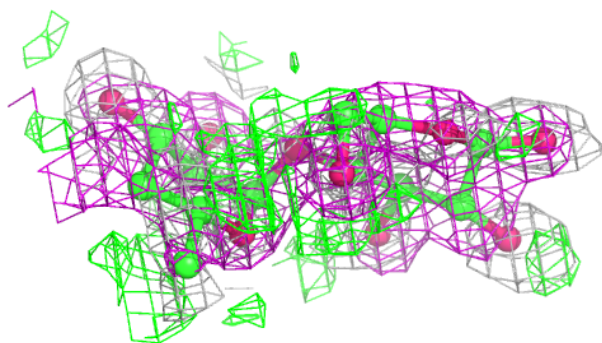
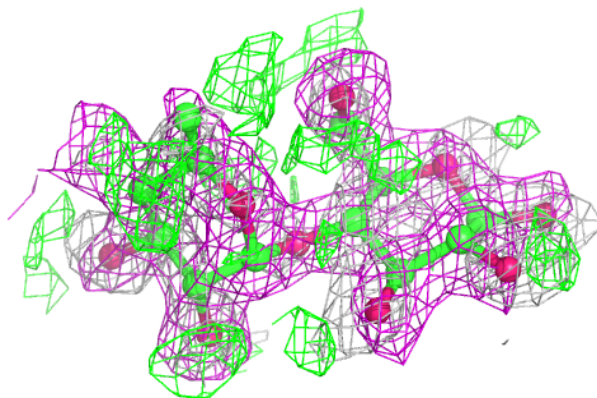
In the following table, the Atoms column lists the number of modelled atoms in the group and the number defined in the chemical component dictionary. The B-factors column lists the minimum, median, 95th percentile and maximum values of B factors of atoms in the group. The column labelled ‘Q< 0.9’ lists the number of atoms with occupancy less than 0.9.

Mol	Type	Chain	Res	Atoms	RSCC	RSR	B-factors(Å ²)	Q<0.9
2	GAL	C	1	12/12	0.50	0.51	10,16,20,28	0
2	GLD	C	2	9/10	0.61	0.56	4,12,17,17	0
2	GLD	D	2	9/10	0.65	0.69	6,12,16,22	0
2	GAL	D	1	12/12	0.69	0.66	12,13,17,17	0

The following is a graphical depiction of the model fit to experimental electron density for oligosaccharide. Each fit is shown from different orientation to approximate a three-dimensional view.

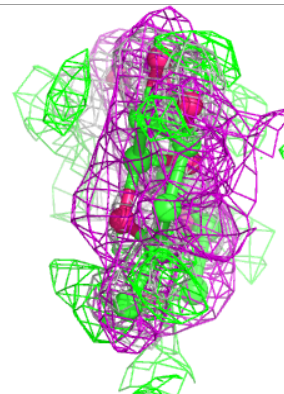
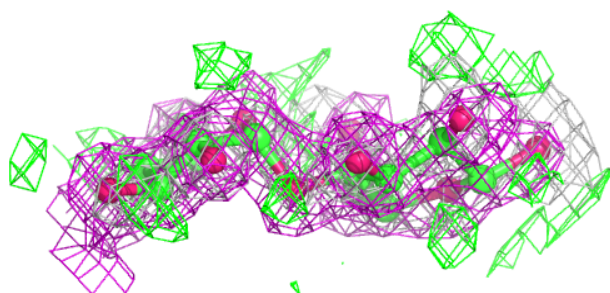
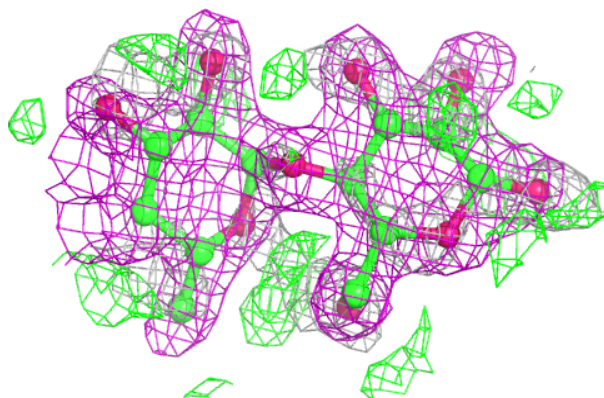
Electron density around Chain C:

$2mF_o-DF_c$ (at 0.7 rmsd) in gray
 mF_o-DF_c (at 3 rmsd) in purple (negative)
and green (positive)



Electron density around Chain D:

$2mF_o-DF_c$ (at 0.7 rmsd) in gray
 mF_o-DF_c (at 3 rmsd) in purple (negative)
and green (positive)



6.4 Ligands [i](#)

In the following table, the Atoms column lists the number of modelled atoms in the group and the number defined in the chemical component dictionary. The B-factors column lists the minimum, median, 95th percentile and maximum values of B factors of atoms in the group. The column labelled 'Q< 0.9' lists the number of atoms with occupancy less than 0.9.

Mol	Type	Chain	Res	Atoms	RSCC	RSR	B-factors(Å ²)	Q<0.9
4	ACI	B	706	12/12	0.49	0.72	9,14,22,23	0
4	ACI	A	702	12/12	0.53	0.58	11,14,17,20	0
3	GLC	A	701	11/12	0.73	0.68	10,13,16,22	0
3	GLC	B	705	11/12	0.78	0.52	12,16,20,21	0
5	CA	A	688	1/1	0.92	0.07	36,36,36,36	0
5	CA	B	690	1/1	0.93	0.07	34,34,34,34	0
5	CA	A	687	1/1	0.97	0.06	12,12,12,12	0
5	CA	B	689	1/1	0.98	0.03	15,15,15,15	0

6.5 Other polymers [i](#)

There are no such residues in this entry.