



Full wwPDB X-ray Structure Validation Report ⓘ

May 13, 2020 – 11:49 pm BST

PDB ID : 4UKD
Title : UMP/CMP KINASE FROM SLIME MOLD COMPLEXED WITH ADP,
UDP, BERYLLIUM FLUORIDE
Authors : Schlichting, I.; Reinstein, J.
Deposited on : 1997-05-20
Resolution : 2.00 Å(reported)

This is a Full wwPDB X-ray Structure Validation Report for a publicly released PDB entry.

We welcome your comments at validation@mail.wwpdb.org

A user guide is available at

<https://www.wwpdb.org/validation/2017/XrayValidationReportHelp>

with specific help available everywhere you see the ⓘ symbol.

The following versions of software and data (see [references ⓘ](#)) were used in the production of this report:

MolProbity	:	4.02b-467
Mogul	:	1.8.5 (274361), CSD as541be (2020)
Xtriage (Phenix)	:	1.13
EDS	:	2.11
buster-report	:	1.1.7 (2018)
Percentile statistics	:	20191225.v01 (using entries in the PDB archive December 25th 2019)
Refmac	:	5.8.0158
CCP4	:	7.0.044 (Gargrove)
Ideal geometry (proteins)	:	Engh & Huber (2001)
Ideal geometry (DNA, RNA)	:	Parkinson et al. (1996)
Validation Pipeline (wwPDB-VP)	:	2.11

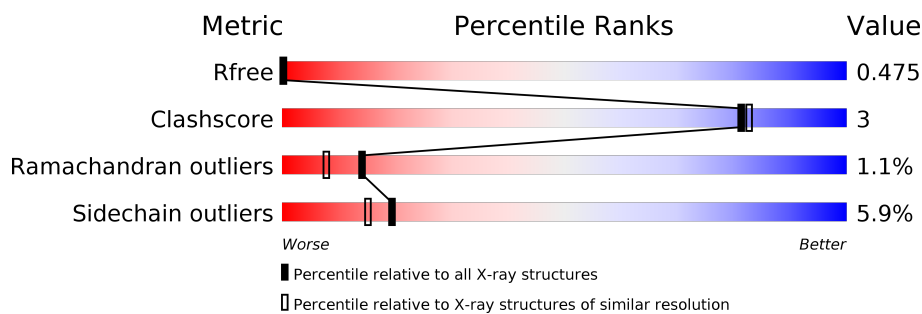
1 Overall quality at a glance

The following experimental techniques were used to determine the structure:

X-RAY DIFFRACTION

The reported resolution of this entry is 2.00 Å.

Percentile scores (ranging between 0-100) for global validation metrics of the entry are shown in the following graphic. The table shows the number of entries on which the scores are based.



Metric	Whole archive (#Entries)	Similar resolution (#Entries, resolution range(Å))
R_{free}	130704	8085 (2.00-2.00)
Clashscore	141614	9178 (2.00-2.00)
Ramachandran outliers	138981	9054 (2.00-2.00)
Sidechain outliers	138945	9053 (2.00-2.00)

The table below summarises the geometric issues observed across the polymeric chains and their fit to the electron density. The red, orange, yellow and green segments on the lower bar indicate the fraction of residues that contain outliers for ≥ 3 , 2, 1 and 0 types of geometric quality criteria respectively. A grey segment represents the fraction of residues that are not modelled. The numeric value for each fraction is indicated below the corresponding segment, with a dot representing fractions $\leq 5\%$.

Mol	Chain	Length	Quality of chain
1	A	194	

2 Entry composition [i](#)

There are 6 unique types of molecules in this entry. The entry contains 1679 atoms, of which 0 are hydrogens and 0 are deuteriums.

In the tables below, the ZeroOcc column contains the number of atoms modelled with zero occupancy, the AltConf column contains the number of residues with at least one atom in alternate conformation and the Trace column contains the number of residues modelled with at most 2 atoms.

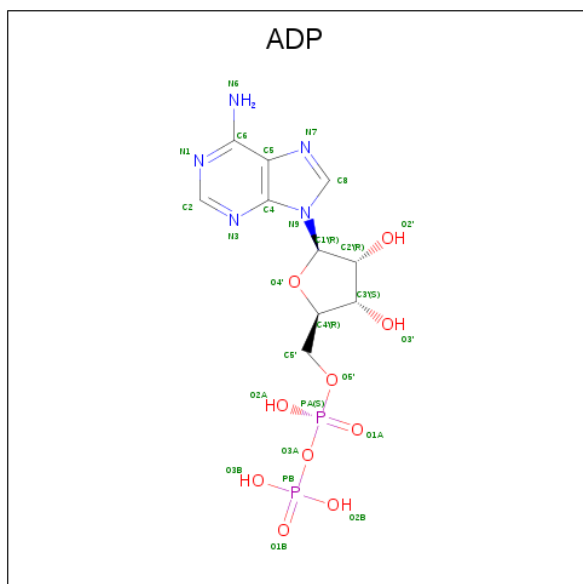
- Molecule 1 is a protein called URIDYLMONOPHOSPHATE/CYTIDYLMONOPHOSPHATE KINASE.

Mol	Chain	Residues	Atoms					ZeroOcc	AltConf	Trace
1	A	191	Total	C	N	O	S	0	0	0
			1516	952	264	293	7			

- Molecule 2 is MAGNESIUM ION (three-letter code: MG) (formula: Mg).

Mol	Chain	Residues	Atoms		ZeroOcc	AltConf
2	A	1	Total	Mg	0	0
			1	1		

- Molecule 3 is ADENOSINE-5'-DIPHOSPHATE (three-letter code: ADP) (formula: C₁₀H₁₅N₅O₁₀P₂).



-
- The image displays the chemical structure of UDP (Uridine Diphosphate). It consists of a uracil base (a pyrimidine ring with two carbonyl groups at positions 2 and 4) attached to a ribose sugar (a five-membered ring with hydroxyl groups at positions 2' and 3'). The ribose is linked to a diphosphate group (two phosphate groups connected by an oxygen atom). The diphosphate group is shown with various oxygen atoms labeled (O1A, O1B, O2A, O2B, O3A, O3B, O4, O5, O6, O7, O8, O9, O10, O11, O12, O13, O14, O15, O16, O17, O18, O19, O20, O21, O22, O23, O24, O25, O26, O27, O28, O29, O30, O31, O32, O33, O34, O35, O36, O37, O38, O39, O40, O41, O42, O43, O44, O45, O46, O47, O48, O49, O50, O51, O52, O53, O54, O55, O56, O57, O58, O59, O60, O61, O62, O63, O64, O65, O66, O67, O68, O69, O70, O71, O72, O73, O74, O75, O76, O77, O78, O79, O80, O81, O82, O83, O84, O85, O86, O87, O88, O89, O90, O91, O92, O93, O94, O95, O96, O97, O98, O99, O100, O101, O102, O103, O104, O105, O106, O107, O108, O109, O110, O111, O112, O113, O114, O115, O116, O117, O118, O119, O120, O121, O122, O123, O124, O125, O126, O127, O128, O129, O130, O131, O132, O133, O134, O135, O136, O137, O138, O139, O140, O141, O142, O143, O144, O145, O146, O147, O148, O149, O150, O151, O152, O153, O154, O155, O156, O157, O158, O159, O160, O161, O162, O163, O164, O165, O166, O167, O168, O169, O170, O171, O172, O173, O174, O175, O176, O177, O178, O179, O180, O181, O182, O183, O184, O185, O186, O187, O188, O189, O190, O191, O192, O193, O194, O195, O196, O197, O198, O199, O200, O201, O202, O203, O204, O205, O206, O207, O208, O209, O210, O211, O212, O213, O214, O215, O216, O217, O218, O219, O220, O221, O222, O223, O224, O225, O226, O227, O228, O229, O230, O231, O232, O233, O234, O235, O236, O237, O238, O239, O240, O241, O242, O243, O244, O245, O246, O247, O248, O249, O250, O251, O252, O253, O254, O255, O256, O257, O258, O259, O260, O261, O262, O263, O264, O265, O266, O267, O268, O269, O270, O271, O272, O273, O274, O275, O276, O277, O278, O279, O280, O281, O282, O283, O284, O285, O286, O287, O288, O289, O290, O291, O292, O293, O294, O295, O296, O297, O298, O299, O300, O301, O302, O303, O304, O305, O306, O307, O308, O309, O310, O311, O312, O313, O314, O315, O316, O317, O318, O319, O320, O321, O322, O323, O324, O325, O326, O327, O328, O329, O330, O331, O332, O333, O334, O335, O336, O337, O338, O339, O340, O341, O342, O343, O344, O345, O346, O347, O348, O349, O350, O351, O352, O353, O354, O355, O356, O357, O358, O359, O360, O361, O362, O363, O364, O365, O366, O367, O368, O369, O370, O371, O372, O373, O374, O375, O376, O377, O378, O379, O380, O381, O382, O383, O384, O385, O386, O387, O388, O389, O390, O391, O392, O393, O394, O395, O396, O397, O398, O399, O400, O401, O402, O403, O404, O405, O406, O407, O408, O409, O410, O411, O412, O413, O414, O415, O416, O417, O418, O419, O420, O421, O422, O423, O424, O425, O426, O427, O428, O429, O430, O431, O432, O433, O434, O435, O436, O437, O438, O439, O440, O441, O442, O443, O444, O445, O446, O447, O448, O449, O450, O451, O452, O453, O454, O455, O456, O457, O458, O459, O460, O461, O462, O463, O464, O465, O466, O467, O468, O469, O470, O471, O472, O473, O474, O475, O476, O477, O478, O479, O480, O481, O482, O483, O484, O485, O486, O487, O488, O489, O490, O491, O492, O493, O494, O495, O496, O497, O498, O499, O500, O501, O502, O503, O504, O505, O506, O507, O508, O509, O510, O511, O512, O513, O514, O515, O516, O517, O518, O519, O520, O521, O522, O523, O524, O525, O526, O527, O528, O529, O530, O531, O532, O533, O534, O535, O536, O537, O538, O539, O540, O541, O542, O543, O544, O545, O546, O547, O548, O549, O550, O551, O552, O553, O554, O555, O556, O557, O558, O559, O560, O561, O562, O563, O564, O565, O566, O567, O568, O569, O570, O571, O572, O573, O574, O575, O576, O577, O578, O579, O580, O581, O582, O583, O584, O585, O586, O587, O588, O589, O590, O591, O592, O593, O594, O595, O596, O597, O598, O599, O600, O601, O602, O603, O604, O605, O606, O607, O608, O609, O610, O611, O612, O613, O614, O615, O616, O617, O618, O619, O620, O621, O622, O623, O624, O625, O626, O627, O628, O629, O630, O631, O632, O633, O634, O635, O636, O637, O638, O639, O640, O641, O642, O643, O644, O645, O646, O647, O648, O649, O650, O651, O652, O653, O654, O655, O656, O657, O658, O659, O660, O661, O662, O663, O664, O665, O666, O667, O668, O669, O670, O671, O672, O673, O674, O675, O676, O677, O678, O679, O680, O681, O682, O683, O684, O685, O686, O687, O688, O689, O690, O691, O692, O693, O694, O695, O696, O697, O698, O699, O700, O701, O702, O703, O704, O705, O706, O707, O708, O709, O710, O711, O712, O713, O714, O715, O716, O717, O718, O719, O720, O721, O722, O723, O724, O725, O726, O727, O728, O729, O730, O731, O732, O733, O734, O735, O736, O737, O738, O739, O740, O741, O742, O743, O744, O745, O746, O747, O748, O749, O750, O751, O752, O753, O754, O755, O756, O757, O758, O759, O760, O761, O762, O763, O764, O765, O766, O767, O768, O769, O770, O771, O772, O773, O774, O775, O776, O777, O778, O779, O780, O781, O782, O783, O784, O785, O786, O787, O788, O789, O790, O791, O792, O793, O794, O795, O796, O797, O798, O799, O800, O801, O802, O803, O804, O805, O806, O807, O808, O809, O810

The diagram shows the Lewis structure of BeF₂. The central Be atom is bonded to two F atoms. The Be atom has no lone pairs. Each F atom has three lone pairs, represented by pairs of dots. The F atom on the right is labeled F1, and the F atom on the left is labeled F2.




Mol	Chain	Residues	Atoms		ZeroOcc	AltConf
6	A	107	Total 107	O 107	0	0

3 Residue-property plots [i](#)

These plots are drawn for all protein, RNA and DNA chains in the entry. The first graphic for a chain summarises the proportions of the various outlier classes displayed in the second graphic. The second graphic shows the sequence view annotated by issues in geometry. Residues are color-coded according to the number of geometric quality criteria for which they contain at least one outlier: green = 0, yellow = 1, orange = 2 and red = 3 or more. Stretches of 2 or more consecutive residues without any outlier are shown as a green connector. Residues present in the sample, but not in the model, are shown in grey.

- Molecule 1: URIDYLMONOPHOSPHATE/CYTIDYLMONOPHOSPHATE KINASE

Chain A:  82% 13% ...



4 Data and refinement statistics

Property	Value	Source
Space group	P 41 21 2	Depositor
Cell constants a, b, c, α , β , γ	78.10Å 78.10Å 101.90Å 90.00° 90.00° 90.00°	Depositor
Resolution (Å)	39.00 – 2.00 39.05 – 1.98	Depositor EDS
% Data completeness (in resolution range)	95.0 (39.00-2.00) 84.4 (39.05-1.98)	Depositor EDS
R_{merge}	0.08	Depositor
R_{sym}	(Not available)	Depositor
$\langle I/\sigma(I) \rangle$ ¹	1.40 (at 1.98Å)	Xtriage
Refinement program	X-PLOR 3.851	Depositor
R, R_{free}	0.194 , 0.212 0.467 , 0.475	Depositor DCC
R_{free} test set	913 reflections (4.76%)	wwPDB-VP
Wilson B-factor (Å ²)	24.2	Xtriage
Anisotropy	0.080	Xtriage
Bulk solvent k_{sol} (e/Å ³), B_{sol} (Å ²)	0.30 , 49.1	EDS
L-test for twinning ²	$\langle L \rangle = 0.50$, $\langle L^2 \rangle = 0.34$	Xtriage
Estimated twinning fraction	No twinning to report.	Xtriage
F_o, F_c correlation	0.67	EDS
Total number of atoms	1679	wwPDB-VP
Average B, all atoms (Å ²)	28.0	wwPDB-VP

Xtriage's analysis on translational NCS is as follows: *The largest off-origin peak in the Patterson function is 5.23% of the height of the origin peak. No significant pseudotranslation is detected.*

¹Intensities estimated from amplitudes.

²Theoretical values of $\langle |L| \rangle$, $\langle L^2 \rangle$ for acentric reflections are 0.5, 0.333 respectively for untwinned datasets, and 0.375, 0.2 for perfectly twinned datasets.

5 Model quality

5.1 Standard geometry

Bond lengths and bond angles in the following residue types are not validated in this section: BF2, MG, UDP, ADP

The Z score for a bond length (or angle) is the number of standard deviations the observed value is removed from the expected value. A bond length (or angle) with $|Z| > 5$ is considered an outlier worth inspection. RMSZ is the root-mean-square of all Z scores of the bond lengths (or angles).

Mol	Chain	Bond lengths		Bond angles	
		RMSZ	$\# Z > 5$	RMSZ	$\# Z > 5$
1	A	0.65	1/1542 (0.1%)	0.74	5/2073 (0.2%)

Chiral center outliers are detected by calculating the chiral volume of a chiral center and verifying if the center is modelled as a planar moiety or with the opposite hand. A planarity outlier is detected by checking planarity of atoms in a peptide group, atoms in a mainchain group or atoms of a sidechain that are expected to be planar.

Mol	Chain	#Chirality outliers	#Planarity outliers
1	A	0	1

All (1) bond length outliers are listed below:

Mol	Chain	Res	Type	Atoms	Z	Observed(Å)	Ideal(Å)
1	A	141	ASN	C-N	11.57	1.60	1.34

All (5) bond angle outliers are listed below:

Mol	Chain	Res	Type	Atoms	Z	Observed(°)	Ideal(°)
1	A	137	ARG	NE-CZ-NH2	7.97	124.29	120.30
1	A	42	ARG	NE-CZ-NH2	7.10	123.85	120.30
1	A	142	ILE	O-C-N	-6.16	112.84	122.70
1	A	93	ARG	NE-CZ-NH2	6.10	123.35	120.30
1	A	141	ASN	C-N-CA	-5.86	107.06	121.70

There are no chirality outliers.

All (1) planarity outliers are listed below:

Mol	Chain	Res	Type	Group
1	A	142	ILE	Mainchain

5.2 Too-close contacts ⓘ

In the following table, the Non-H and H(model) columns list the number of non-hydrogen atoms and hydrogen atoms in the chain respectively. The H(added) column lists the number of hydrogen atoms added and optimized by MolProbity. The Clashes column lists the number of clashes within the asymmetric unit, whereas Symm-Clashes lists symmetry related clashes.

Mol	Chain	Non-H	H(model)	H(added)	Clashes	Symm-Clashes
1	A	1516	0	1493	8	6
2	A	1	0	0	0	0
3	A	27	0	12	0	0
4	A	25	0	11	0	0
5	A	3	0	0	0	0
6	A	107	0	0	1	3
All	All	1679	0	1516	8	6

The all-atom clashscore is defined as the number of clashes found per 1000 atoms (including hydrogen atoms). The all-atom clashscore for this structure is 3.

All (8) close contacts within the same asymmetric unit are listed below, sorted by their clash magnitude.

Atom-1	Atom-2	Interatomic distance (Å)	Clash overlap (Å)
1:A:182:TYR:O	1:A:185:VAL:O	2.25	0.55
1:A:101:TRP:HE1	1:A:111:THR:HG21	1.76	0.50
1:A:131:ARG:HG2	1:A:135:SER:HB3	1.95	0.48
1:A:185:VAL:O	1:A:186:GLU:CB	2.62	0.48
1:A:102:GLU:O	1:A:106:LYS:HB2	2.16	0.46
1:A:182:TYR:O	1:A:182:TYR:CG	2.71	0.44
1:A:5:LYS:HA	1:A:6:PRO:HD3	1.90	0.42
1:A:93:ARG:HG3	6:A:199:HOH:O	2.20	0.42

All (6) symmetry-related close contacts are listed below. The label for Atom-2 includes the symmetry operator and encoded unit-cell translations to be applied.

Atom-1	Atom-2	Interatomic distance (Å)	Clash overlap (Å)
1:A:47:SER:OG	1:A:95:GLU:OE1[3_655]	1.82	0.38
1:A:193:GLY:O	6:A:532:HOH:O[6_564]	1.89	0.31
1:A:154:VAL:CG1	6:A:207:HOH:O[4_464]	1.95	0.25
1:A:47:SER:CB	1:A:95:GLU:OE1[3_655]	1.97	0.23
1:A:126:GLN:NE2	1:A:192:MET:O[6_464]	2.02	0.18
1:A:43:GLN:NE2	6:A:577:HOH:O[3_655]	2.10	0.10

5.3 Torsion angles [i](#)

5.3.1 Protein backbone [i](#)

In the following table, the Percentiles column shows the percent Ramachandran outliers of the chain as a percentile score with respect to all X-ray entries followed by that with respect to entries of similar resolution.

The Analysed column shows the number of residues for which the backbone conformation was analysed, and the total number of residues.

Mol	Chain	Analysed	Favoured	Allowed	Outliers	Percentiles
1	A	189/194 (97%)	182 (96%)	5 (3%)	2 (1%)	14 8

All (2) Ramachandran outliers are listed below:

Mol	Chain	Res	Type
1	A	49	SER
1	A	186	GLU

5.3.2 Protein sidechains [i](#)

In the following table, the Percentiles column shows the percent sidechain outliers of the chain as a percentile score with respect to all X-ray entries followed by that with respect to entries of similar resolution.

The Analysed column shows the number of residues for which the sidechain conformation was analysed, and the total number of residues.

Mol	Chain	Analysed	Rotameric	Outliers	Percentiles
1	A	170/173 (98%)	160 (94%)	10 (6%)	19 15

All (10) residues with a non-rotameric sidechain are listed below:

Mol	Chain	Res	Type
1	A	60	LYS
1	A	88	VAL
1	A	103	GLU
1	A	111	THR
1	A	130	LYS
1	A	137	ARG
1	A	142	ILE
1	A	158	LEU
1	A	167	ASP

Continued on next page...

Continued from previous page...

Mol	Chain	Res	Type
1	A	180	GLU

Some sidechains can be flipped to improve hydrogen bonding and reduce clashes. All (3) such sidechains are listed below:

Mol	Chain	Res	Type
1	A	22	GLN
1	A	99	ASN
1	A	164	ASN

5.3.3 RNA [i](#)

There are no RNA molecules in this entry.

5.4 Non-standard residues in protein, DNA, RNA chains [i](#)

There are no non-standard protein/DNA/RNA residues in this entry.

5.5 Carbohydrates [i](#)

There are no carbohydrates in this entry.

5.6 Ligand geometry [i](#)

Of 4 ligands modelled in this entry, 1 is monoatomic - leaving 3 for Mogul analysis.

In the following table, the Counts columns list the number of bonds (or angles) for which Mogul statistics could be retrieved, the number of bonds (or angles) that are observed in the model and the number of bonds (or angles) that are defined in the Chemical Component Dictionary. The Link column lists molecule types, if any, to which the group is linked. The Z score for a bond length (or angle) is the number of standard deviations the observed value is removed from the expected value. A bond length (or angle) with $|Z| > 2$ is considered an outlier worth inspection. RMSZ is the root-mean-square of all Z scores of the bond lengths (or angles).

Mol	Type	Chain	Res	Link	Bond lengths			Bond angles		
					Counts	RMSZ	$\# Z > 2$	Counts	RMSZ	$\# Z > 2$
3	ADP	A	195	2,5	24,29,29	1.42	5 (20%)	29,45,45	1.19	2 (6%)
5	BF2	A	501	3,2,4	0,2,2	0.00	-	-		
4	UDP	A	196	5	20,26,26	2.57	7 (35%)	25,40,40	1.84	3 (12%)

In the following table, the Chirals column lists the number of chiral outliers, the number of chiral centers analysed, the number of these observed in the model and the number defined in the Chemical Component Dictionary. Similar counts are reported in the Torsion and Rings columns. '-' means no outliers of that kind were identified.

Mol	Type	Chain	Res	Link	Chirals	Torsions	Rings
3	ADP	A	195	2,5	-	1/12/32/32	0/3/3/3
4	UDP	A	196	5	-	2/14/32/32	0/2/2/2

All (12) bond length outliers are listed below:

Mol	Chain	Res	Type	Atoms	Z	Observed(Å)	Ideal(Å)
4	A	196	UDP	C6-N1	8.48	1.46	1.35
4	A	196	UDP	O4-C4	4.04	1.34	1.24
4	A	196	UDP	PB-O2B	-2.85	1.43	1.54
3	A	195	ADP	C8-N7	-2.80	1.29	1.34
3	A	195	ADP	PA-O2A	-2.79	1.42	1.55
4	A	196	UDP	C2-N3	-2.70	1.32	1.38
3	A	195	ADP	PB-O2B	-2.64	1.44	1.54
4	A	196	UDP	O4'-C4'	-2.31	1.39	1.45
3	A	195	ADP	O2'-C2'	-2.28	1.37	1.43
4	A	196	UDP	PA-O2A	-2.26	1.44	1.55
4	A	196	UDP	PB-O1B	-2.19	1.43	1.50
3	A	195	ADP	PB-O1B	-2.06	1.43	1.50

All (5) bond angle outliers are listed below:

Mol	Chain	Res	Type	Atoms	Z	Observed(°)	Ideal(°)
4	A	196	UDP	C6-N1-C2	-6.72	110.52	121.20
3	A	195	ADP	O4'-C1'-C2'	-3.22	102.22	106.93
4	A	196	UDP	C5-C4-N3	-3.19	116.29	123.31
3	A	195	ADP	C3'-C2'-C1'	2.71	105.06	100.98
4	A	196	UDP	O4'-C4'-C3'	-2.40	100.37	105.11

There are no chirality outliers.

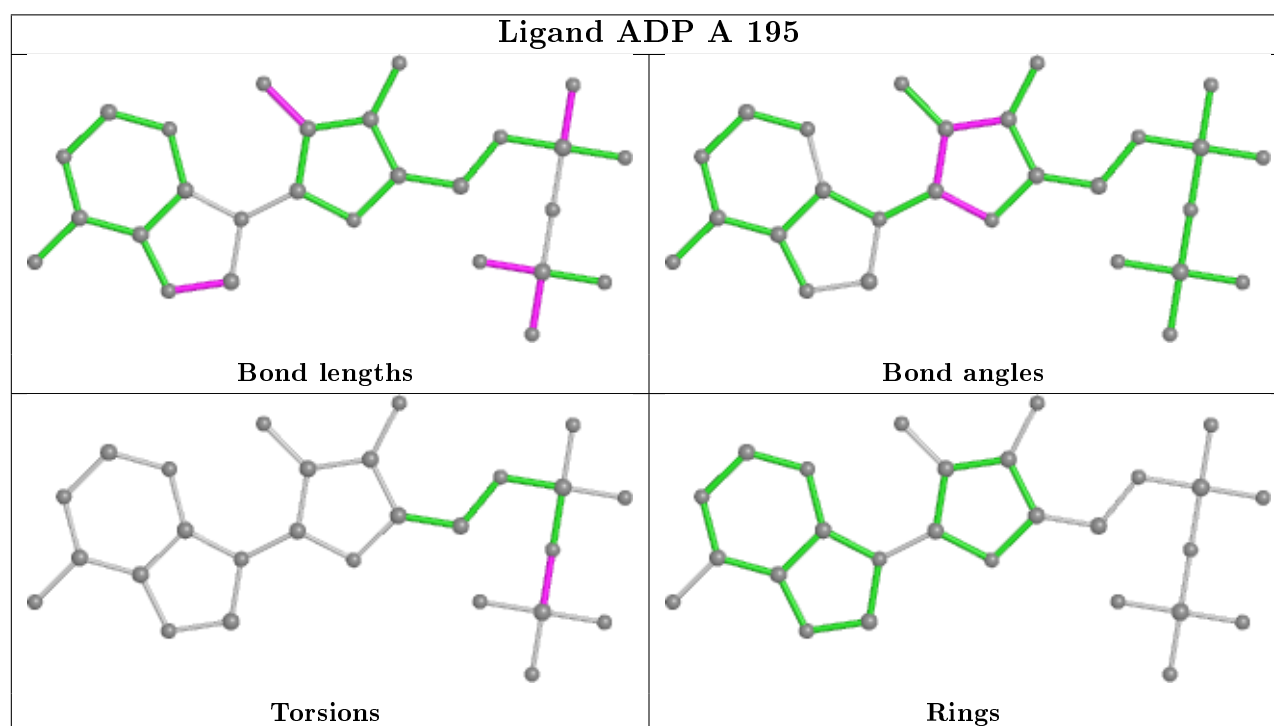
All (3) torsion outliers are listed below:

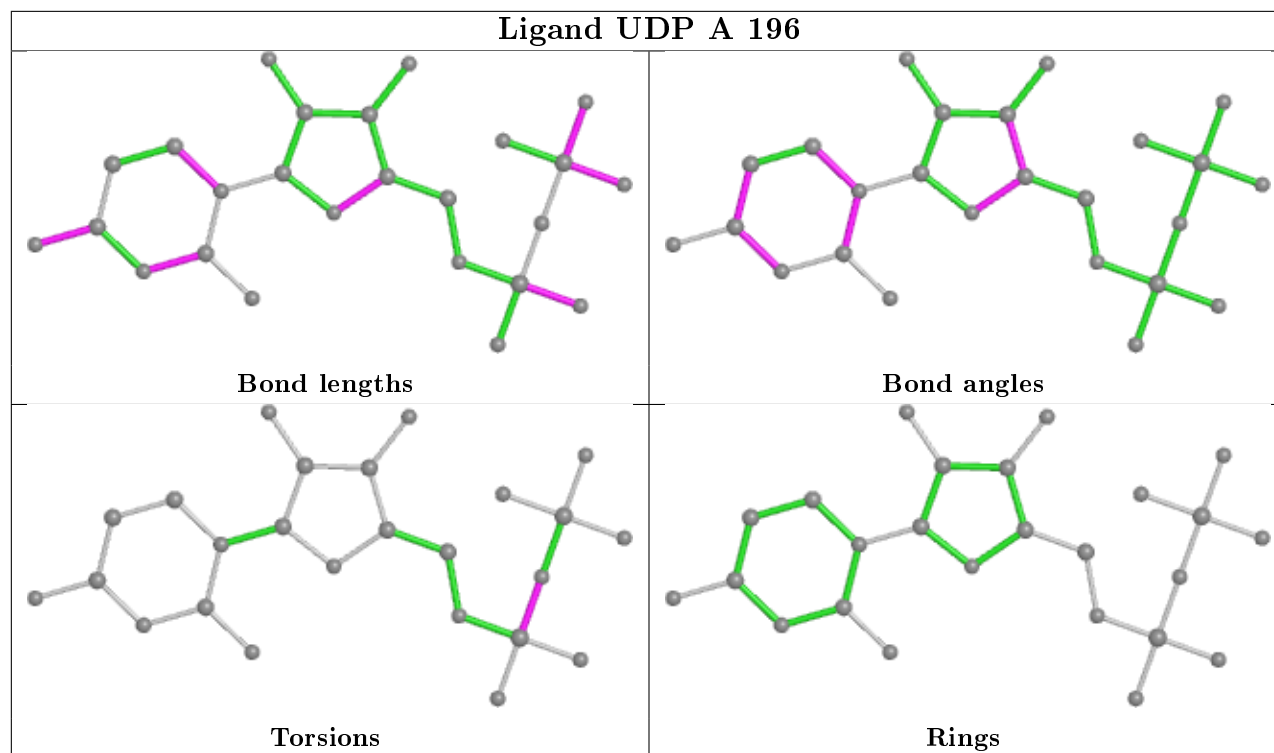
Mol	Chain	Res	Type	Atoms
4	A	196	UDP	PB-O3A-PA-O1A
4	A	196	UDP	PB-O3A-PA-O2A
3	A	195	ADP	PA-O3A-PB-O1B

There are no ring outliers.

No monomer is involved in short contacts.

The following is a two-dimensional graphical depiction of Mogul quality analysis of bond lengths, bond angles, torsion angles, and ring geometry for all instances of the Ligand of Interest. In addition, ligands with molecular weight > 250 and outliers as shown on the validation Tables will also be included. For torsion angles, if less than 5% of the Mogul distribution of torsion angles is within 10 degrees of the torsion angle in question, then that torsion angle is considered an outlier. Any bond that is central to one or more torsion angles identified as an outlier by Mogul will be highlighted in the graph. For rings, the root-mean-square deviation (RMSD) between the ring in question and similar rings identified by Mogul is calculated over all ring torsion angles. If the average RMSD is greater than 60 degrees and the minimal RMSD between the ring in question and any Mogul-identified rings is also greater than 60 degrees, then that ring is considered an outlier. The outliers are highlighted in purple. The color gray indicates Mogul did not find sufficient equivalents in the CSD to analyse the geometry.





5.7 Other polymers [i](#)

There are no such residues in this entry.

5.8 Polymer linkage issues [i](#)

The following chains have linkage breaks:

Mol	Chain	Number of breaks
1	A	1

All chain breaks are listed below:

Model	Chain	Residue-1	Atom-1	Residue-2	Atom-2	Distance (Å)
1	A	141:ASN	C	142:ILE	N	1.60

6 Fit of model and data [i](#)

6.1 Protein, DNA and RNA chains [i](#)

Unable to reproduce the depositors R factor - this section is therefore empty.

6.2 Non-standard residues in protein, DNA, RNA chains [i](#)

Unable to reproduce the depositors R factor - this section is therefore empty.

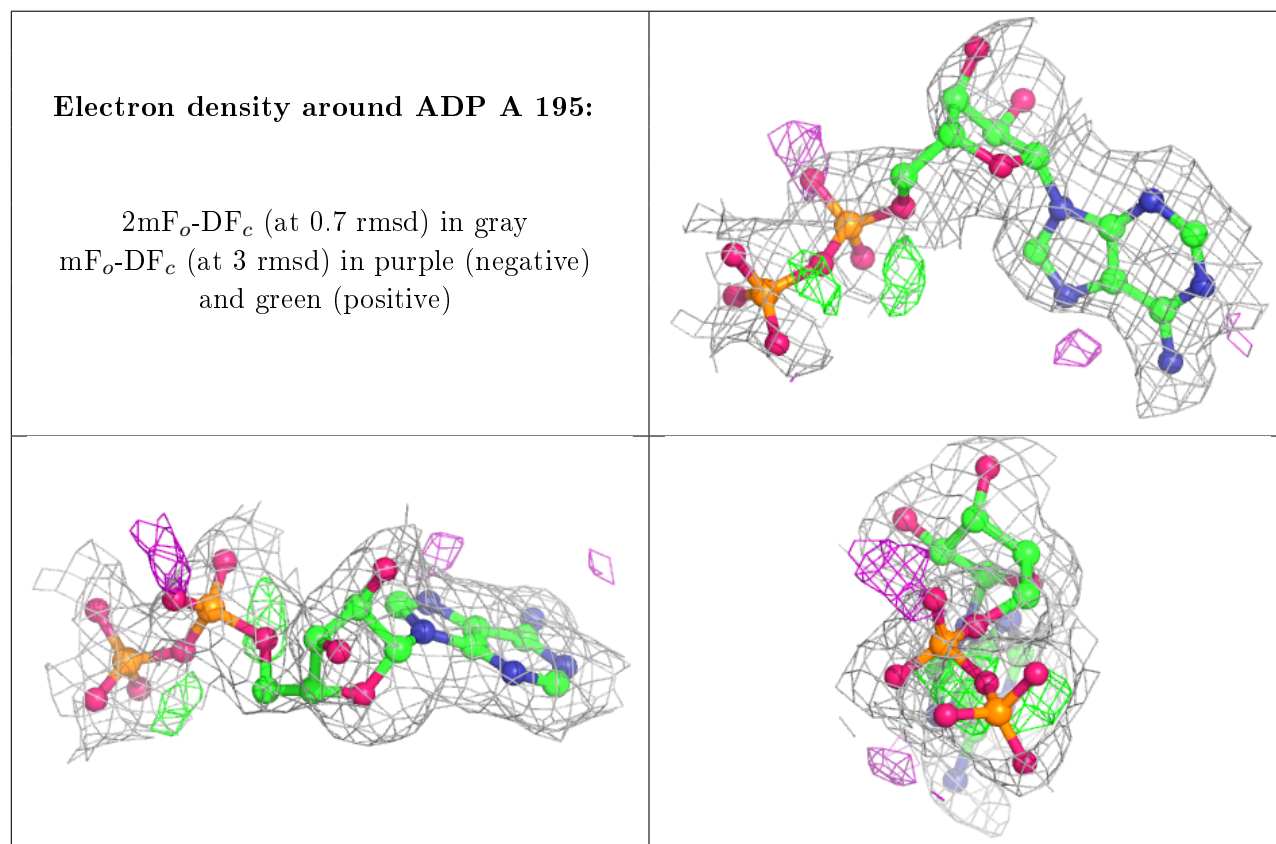
6.3 Carbohydrates [i](#)

Unable to reproduce the depositors R factor - this section is therefore empty.

6.4 Ligands [i](#)

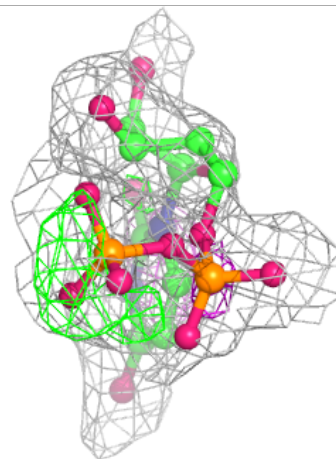
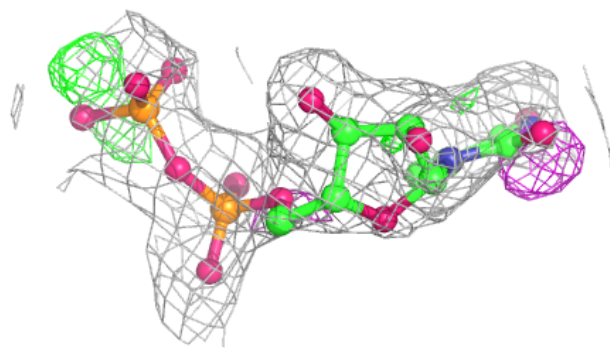
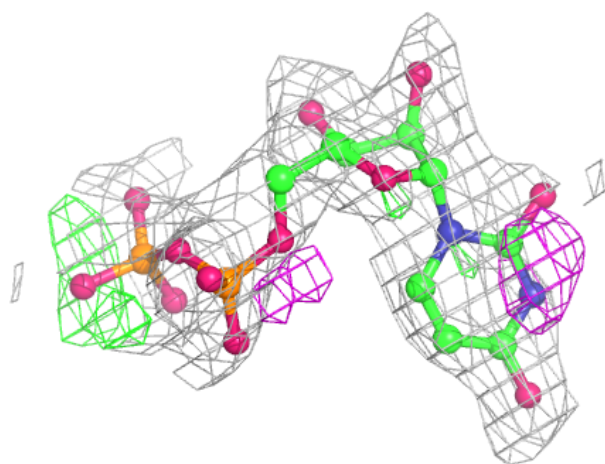
Unable to reproduce the depositors R factor - this section is therefore empty.

The following is a graphical depiction of the model fit to experimental electron density of all instances of the Ligand of Interest. In addition, ligands with molecular weight > 250 and outliers as shown on the geometry validation Tables will also be included. Each fit is shown from different orientation to approximate a three-dimensional view.



Electron density around UDP A 196:

$2mF_o-DF_c$ (at 0.7 rmsd) in gray
 mF_o-DF_c (at 3 rmsd) in purple (negative)
and green (positive)



6.5 Other polymers [i](#)

Unable to reproduce the depositor's R factor - this section is therefore empty.