



Full wwPDB X-ray Structure Validation Report ⓘ

Jul 14, 2022 – 04:24 PM EDT

PDB ID : 7UM4
Title : Crystal structure of inactive 5-HT5AR in complex with AS2674723
Authors : Zhang, S.; Roth, B.L.
Deposited on : 2022-04-06
Resolution : 2.80 Å(reported)

This is a Full wwPDB X-ray Structure Validation Report for a publicly released PDB entry.

We welcome your comments at validation@mail.wwpdb.org

A user guide is available at

<https://www.wwpdb.org/validation/2017/XrayValidationReportHelp>

with specific help available everywhere you see the ⓘ symbol.

The types of validation reports are described at <http://www.wwpdb.org/validation/2017/FAQs#types>.

The following versions of software and data (see [references ⓘ](#)) were used in the production of this report:

MolProbity : 4.02b-467
Mogul : 1.8.5 (274361), CSD as541be (2020)
Xtriage (Phenix) : 1.13
EDS : 2.29
buster-report : 1.1.7 (2018)
Percentile statistics : 20191225.v01 (using entries in the PDB archive December 25th 2019)
Refmac : 5.8.0158
CCP4 : 7.0.044 (Gargrove)
Ideal geometry (proteins) : Engh & Huber (2001)
Ideal geometry (DNA, RNA) : Parkinson et al. (1996)
Validation Pipeline (wwPDB-VP) : 2.29

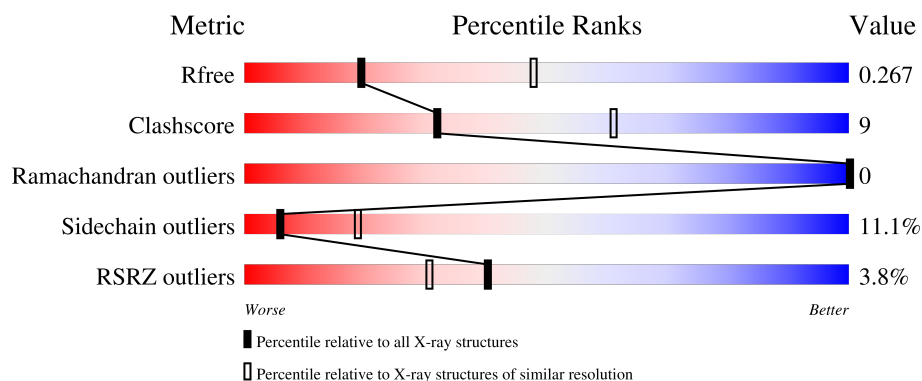
1 Overall quality at a glance

The following experimental techniques were used to determine the structure:

X-RAY DIFFRACTION

The reported resolution of this entry is 2.80 Å.

Percentile scores (ranging between 0-100) for global validation metrics of the entry are shown in the following graphic. The table shows the number of entries on which the scores are based.



Metric	Whole archive (#Entries)	Similar resolution (#Entries, resolution range(Å))
R_{free}	130704	3140 (2.80-2.80)
Clashscore	141614	3569 (2.80-2.80)
Ramachandran outliers	138981	3498 (2.80-2.80)
Sidechain outliers	138945	3500 (2.80-2.80)
RSRZ outliers	127900	3078 (2.80-2.80)

The table below summarises the geometric issues observed across the polymeric chains and their fit to the electron density. The red, orange, yellow and green segments of the lower bar indicate the fraction of residues that contain outliers for ≥ 3 , 2, 1 and 0 types of geometric quality criteria respectively. A grey segment represents the fraction of residues that are not modelled. The numeric value for each fraction is indicated below the corresponding segment, with a dot representing fractions $\leq 5\%$. The upper red bar (where present) indicates the fraction of residues that have poor fit to the electron density. The numeric value is given above the bar.

Mol	Chain	Length	Quality of chain
1	A	336	<div> <div>4%</div> <div>58%</div> <div>15%</div> <div>24%</div> </div>
2	B	200	<div> <div>2%</div> <div>74%</div> <div>22%</div> </div>

2 Entry composition [i](#)

There are 8 unique types of molecules in this entry. The entry contains 3630 atoms, of which 0 are hydrogens and 0 are deuteriums.

In the tables below, the ZeroOcc column contains the number of atoms modelled with zero occupancy, the AltConf column contains the number of residues with at least one atom in alternate conformation and the Trace column contains the number of residues modelled with at most 2 atoms.

- Molecule 1 is a protein called 5-hydroxytryptamine receptor 5A.

Mol	Chain	Residues	Atoms					ZeroOcc	AltConf	Trace
			Total	C	N	O	S			
1	A	254	1980	1320	317	329	14	0	0	0

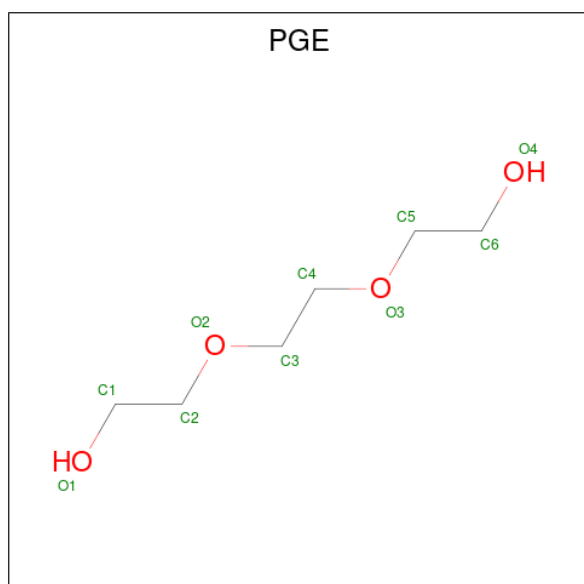
There are 2 discrepancies between the modelled and reference sequences:

Chain	Residue	Modelled	Actual	Comment	Reference
A	86	ASN	ASP	engineered mutation	UNP P47898
A	299	ALA	ILE	engineered mutation	UNP P47898

- Molecule 2 is a protein called PGS.

Mol	Chain	Residues	Atoms					ZeroOcc	AltConf	Trace
			Total	C	N	O	S			
2	B	199	1556	992	264	291	9	0	0	0

- Molecule 3 is TRIETHYLENE GLYCOL (three-letter code: PGE) (formula: C₆H₁₄O₄).



Mol	Chain	Residues	Atoms			ZeroOcc	AltConf
3	A	1	Total	C	O	0	0
			10	6	4		

- Molecule 4 is DI(HYDROXYETHYL)ETHER (three-letter code: PEG) (formula: $C_4H_{10}O_3$).



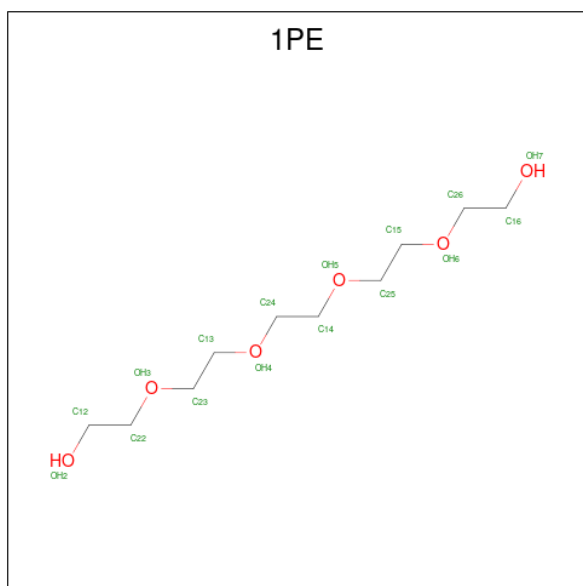
Mol	Chain	Residues	Atoms			ZeroOcc	AltConf
4	A	1	Total	C	O	0	0
			7	4	3		
4	A	1	Total	C	O	0	0
			7	4	3		
4	A	1	Total	C	O	0	0
			7	4	3		

- Molecule 5 is TETRAETHYLENE GLYCOL (three-letter code: PG4) (formula: $C_8H_{18}O_5$).



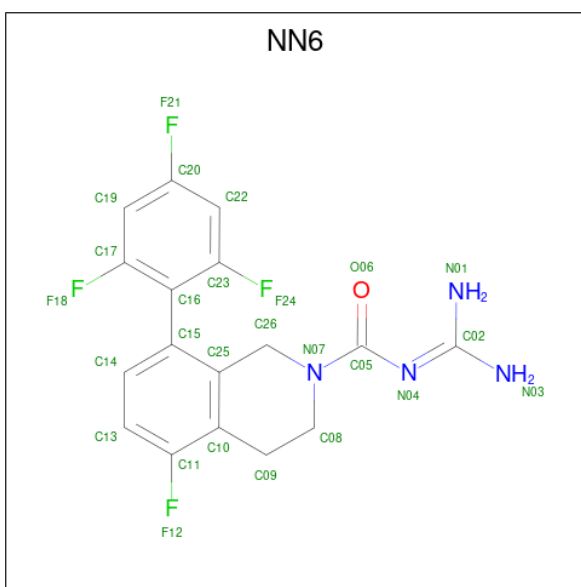
Mol	Chain	Residues	Atoms			ZeroOcc	AltConf
5	A	1	Total	C	O	0	0
			13	8	5		

- Molecule 6 is PENTAETHYLENE GLYCOL (three-letter code: 1PE) (formula: $C_{10}H_{22}O_6$).



Mol	Chain	Residues	Atoms			ZeroOcc	AltConf
6	A	1	Total	C	O	0	0
			16	10	6		

- Molecule 7 is {N}-[azanyl(azanylidene)methylidene]-5-fluoranyl-8-[2,4,6-tris(fluoranyl)phenyl]-3,4-dihydro-1 {H}-isoquinoline-2-carboxamide (three-letter code: NN6) (formula: $C_{17}H_{14}F_4N_4O$) (labeled as "Ligand of Interest" by depositor).



Mol	Chain	Residues	Atoms					ZeroOcc	AltConf
7	A	1	Total	C	F	N	O	0	0
			26	17	4	4	1		

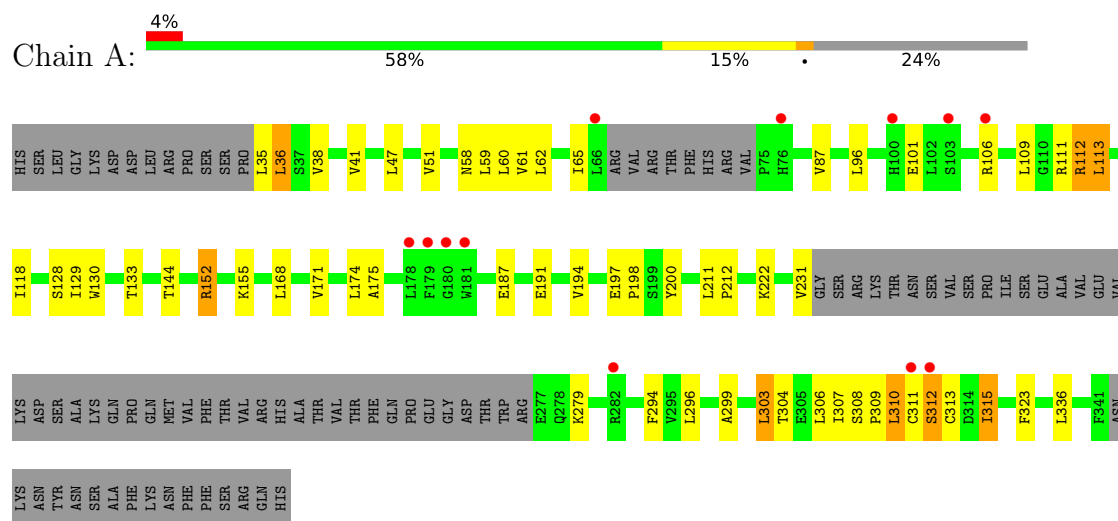
- Molecule 8 is water.

Mol	Chain	Residues	Atoms		ZeroOcc	AltConf
8	A	5	Total	O	0	0
			5	5		
8	B	3	Total	O	0	0
			3	3		

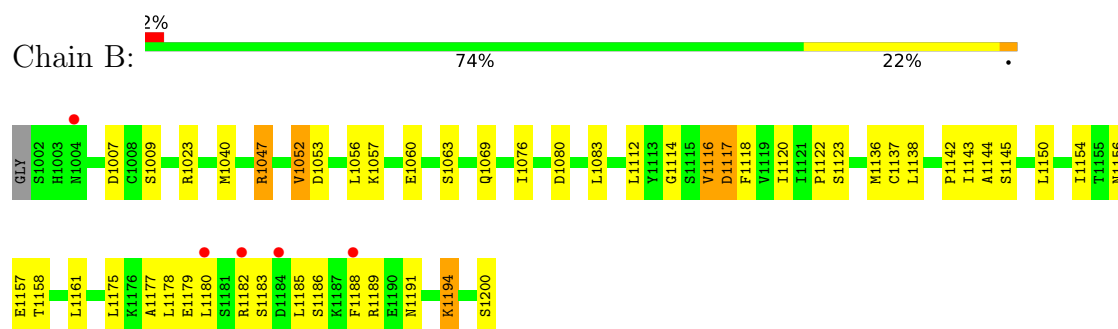
3 Residue-property plots

These plots are drawn for all protein, RNA, DNA and oligosaccharide chains in the entry. The first graphic for a chain summarises the proportions of the various outlier classes displayed in the second graphic. The second graphic shows the sequence view annotated by issues in geometry and electron density. Residues are color-coded according to the number of geometric quality criteria for which they contain at least one outlier: green = 0, yellow = 1, orange = 2 and red = 3 or more. A red dot above a residue indicates a poor fit to the electron density ($RSRZ > 2$). Stretches of 2 or more consecutive residues without any outlier are shown as a green connector. Residues present in the sample, but not in the model, are shown in grey.

• Molecule 1: 5-hydroxytryptamine receptor 5A



• Molecule 2: PGS



4 Data and refinement statistics

Property	Value	Source
Space group	P 21 21 2	Depositor
Cell constants a, b, c, α , β , γ	135.29Å 42.46Å 94.79Å 90.00° 90.00° 90.00°	Depositor
Resolution (Å)	44.73 – 2.80 44.73 – 2.80	Depositor EDS
% Data completeness (in resolution range)	97.4 (44.73-2.80) 97.5 (44.73-2.80)	Depositor EDS
R_{merge}	0.31	Depositor
R_{sym}	(Not available)	Depositor
$\langle I/\sigma(I) \rangle$ ¹	1.67 (at 2.81Å)	Xtriage
Refinement program	PHENIX 1.19.2_4158	Depositor
R, R_{free}	0.229 , 0.271 0.227 , 0.267	Depositor DCC
R_{free} test set	682 reflections (4.97%)	wwPDB-VP
Wilson B-factor (Å ²)	67.5	Xtriage
Anisotropy	0.496	Xtriage
Bulk solvent k_{sol} (e/Å ³), B_{sol} (Å ²)	0.33 , 61.0	EDS
L-test for twinning ²	$\langle L \rangle = 0.46$, $\langle L^2 \rangle = 0.29$	Xtriage
Estimated twinning fraction	No twinning to report.	Xtriage
F_o, F_c correlation	0.93	EDS
Total number of atoms	3630	wwPDB-VP
Average B, all atoms (Å ²)	67.0	wwPDB-VP

Xtriage's analysis on translational NCS is as follows: *The largest off-origin peak in the Patterson function is 5.83% of the height of the origin peak. No significant pseudotranslation is detected.*

¹Intensities estimated from amplitudes.

²Theoretical values of $\langle |L| \rangle$, $\langle L^2 \rangle$ for acentric reflections are 0.5, 0.333 respectively for untwinned datasets, and 0.375, 0.2 for perfectly twinned datasets.

5 Model quality

5.1 Standard geometry

Bond lengths and bond angles in the following residue types are not validated in this section: PGE, NN6, PG4, PEG, 1PE

The Z score for a bond length (or angle) is the number of standard deviations the observed value is removed from the expected value. A bond length (or angle) with $|Z| > 5$ is considered an outlier worth inspection. RMSZ is the root-mean-square of all Z scores of the bond lengths (or angles).

Mol	Chain	Bond lengths		Bond angles	
		RMSZ	$\# Z > 5$	RMSZ	$\# Z > 5$
1	A	0.37	0/2032	0.53	0/2777
2	B	0.35	0/1582	0.56	0/2119
All	All	0.36	0/3614	0.54	0/4896

There are no bond length outliers.

There are no bond angle outliers.

There are no chirality outliers.

There are no planarity outliers.

5.2 Too-close contacts

In the following table, the Non-H and H(model) columns list the number of non-hydrogen atoms and hydrogen atoms in the chain respectively. The H(added) column lists the number of hydrogen atoms added and optimized by MolProbity. The Clashes column lists the number of clashes within the asymmetric unit, whereas Symm-Clashes lists symmetry-related clashes.

Mol	Chain	Non-H	H(model)	H(added)	Clashes	Symm-Clashes
1	A	1980	0	2025	38	0
2	B	1556	0	1575	26	0
3	A	10	0	14	0	0
4	A	21	0	30	1	0
5	A	13	0	18	1	0
6	A	16	0	22	1	0
7	A	26	0	0	2	0
8	A	5	0	0	1	0
8	B	3	0	0	0	0
All	All	3630	0	3684	65	0

The all-atom clashscore is defined as the number of clashes found per 1000 atoms (including

hydrogen atoms). The all-atom clashscore for this structure is 9.

All (65) close contacts within the same asymmetric unit are listed below, sorted by their clash magnitude.

Atom-1	Atom-2	Interatomic distance (Å)	Clash overlap (Å)
1:A:308:SER:HB2	1:A:315:ILE:HD11	1.61	0.83
2:B:1117:ASP:HB2	2:B:1189:ARG:HH22	1.54	0.72
2:B:1023:ARG:NH1	2:B:1114:GLY:O	2.27	0.67
1:A:279:LYS:HB2	2:B:1200:SER:HB2	1.79	0.63
1:A:133:THR:HG21	1:A:212:PRO:HB2	1.79	0.62
1:A:101:GLU:OE2	7:A:1607:NN6:N01	2.33	0.62
2:B:1144:ALA:HB1	2:B:1150:LEU:HD13	1.82	0.61
2:B:1120:ILE:HG22	2:B:1122:PRO:HD3	1.85	0.59
1:A:299:ALA:O	1:A:303:LEU:HB2	2.02	0.59
1:A:308:SER:CB	1:A:315:ILE:HD11	2.31	0.58
1:A:35:LEU:HG	1:A:36:LEU:H	1.69	0.56
1:A:308:SER:N	1:A:309:PRO:HD2	2.21	0.56
1:A:133:THR:HG21	1:A:212:PRO:CB	2.35	0.56
1:A:279:LYS:H	2:B:1200:SER:HB2	1.72	0.54
2:B:1191:ASN:O	2:B:1194:LYS:HG3	2.08	0.53
1:A:308:SER:HA	1:A:312:SER:HB3	1.90	0.53
2:B:1117:ASP:HB2	2:B:1189:ARG:NH2	2.21	0.52
2:B:1007:ASP:OD1	2:B:1009:SER:OG	2.24	0.52
1:A:307:ILE:O	1:A:312:SER:HB2	2.10	0.50
2:B:1060:GLU:O	2:B:1063:SER:OG	2.27	0.50
2:B:1047:ARG:HB3	2:B:1047:ARG:NH1	2.27	0.50
1:A:129:ILE:O	1:A:133:THR:HG23	2.13	0.49
2:B:1144:ALA:O	2:B:1161:LEU:HA	2.13	0.49
1:A:47:LEU:O	1:A:51:VAL:HG23	2.13	0.48
1:A:109:LEU:HB3	1:A:113:LEU:HD21	1.94	0.48
2:B:1136:MET:HE3	2:B:1154:ILE:HG12	1.96	0.48
7:A:1607:NN6:N03	7:A:1607:NN6:O06	2.45	0.47
1:A:308:SER:HB2	1:A:315:ILE:CD1	2.38	0.47
2:B:1040:MET:HE3	2:B:1076:ILE:HD12	1.97	0.47
2:B:1080:ASP:HB3	2:B:1083:LEU:HD12	1.97	0.46
2:B:1118:PHE:CD1	2:B:1143:ILE:HD11	2.52	0.45
1:A:144:THR:CG2	1:A:222:LYS:HG2	2.48	0.44
5:A:1603:PG4:H62	4:A:1604:PEG:H42	1.99	0.44
1:A:112:ARG:HE	1:A:112:ARG:H	1.64	0.44
1:A:155:LYS:HB3	1:A:155:LYS:HE3	1.83	0.44
1:A:303:LEU:O	1:A:307:ILE:HG23	2.18	0.44
2:B:1052:VAL:O	2:B:1056:LEU:HG	2.19	0.43
1:A:303:LEU:HD22	1:A:303:LEU:HA	1.75	0.43

Continued on next page...

Continued from previous page...

Atom-1	Atom-2	Interatomic distance (Å)	Clash overlap (Å)
1:A:62:LEU:HD23	1:A:62:LEU:HA	1.90	0.43
1:A:130:TRP:CZ2	1:A:212:PRO:HD3	2.54	0.43
2:B:1118:PHE:CZ	2:B:1177:ALA:HB1	2.53	0.43
1:A:304:THR:HG21	1:A:323:PHE:HE2	1.82	0.43
1:A:308:SER:HA	1:A:315:ILE:HD11	2.00	0.43
1:A:128:SER:HB2	8:A:1704:HOH:O	2.19	0.43
2:B:1112:LEU:O	2:B:1116:VAL:HB	2.19	0.43
1:A:61:VAL:O	1:A:65:ILE:HG12	2.19	0.43
1:A:175:ALA:HB3	1:A:200:TYR:HE1	1.84	0.42
1:A:118:ILE:HD13	1:A:194:VAL:HA	2.00	0.42
1:A:308:SER:CA	1:A:315:ILE:HD11	2.49	0.42
2:B:1136:MET:HE3	2:B:1142:PRO:HG2	2.00	0.42
2:B:1047:ARG:HB3	2:B:1047:ARG:HH11	1.85	0.42
1:A:152:ARG:HD3	1:A:152:ARG:H	1.85	0.42
1:A:308:SER:N	1:A:309:PRO:CD	2.83	0.41
6:A:1605:1PE:H142	6:A:1605:1PE:H132	1.56	0.41
1:A:310:LEU:O	1:A:311:CYS:CB	2.68	0.41
1:A:58:ASN:HB3	1:A:87:VAL:HG23	2.02	0.41
2:B:1175:LEU:HD23	2:B:1175:LEU:HA	1.89	0.41
1:A:168:LEU:HA	1:A:171:VAL:HG22	2.02	0.41
1:A:187:GLU:H	1:A:187:GLU:HG2	1.65	0.41
2:B:1047:ARG:H	2:B:1047:ARG:HG2	1.60	0.41
1:A:96:LEU:HD12	1:A:96:LEU:HA	1.92	0.40
1:A:197:GLU:HG2	1:A:198:PRO:HD2	2.02	0.40
2:B:1057:LYS:HD3	2:B:1057:LYS:HA	1.96	0.40
2:B:1185:LEU:O	2:B:1189:ARG:HG3	2.21	0.40
2:B:1123:SER:O	2:B:1145:SER:OG	2.27	0.40

There are no symmetry-related clashes.

5.3 Torsion angles

5.3.1 Protein backbone

In the following table, the Percentiles column shows the percent Ramachandran outliers of the chain as a percentile score with respect to all X-ray entries followed by that with respect to entries of similar resolution.

The Analysed column shows the number of residues for which the backbone conformation was analysed, and the total number of residues.

Mol	Chain	Analysed	Favoured	Allowed	Outliers	Percentiles	
1	A	248/336 (74%)	233 (94%)	15 (6%)	0	100	100
2	B	197/200 (98%)	188 (95%)	9 (5%)	0	100	100
All	All	445/536 (83%)	421 (95%)	24 (5%)	0	100	100

There are no Ramachandran outliers to report.

5.3.2 Protein sidechains ⓘ

In the following table, the Percentiles column shows the percent sidechain outliers of the chain as a percentile score with respect to all X-ray entries followed by that with respect to entries of similar resolution.

The Analysed column shows the number of residues for which the sidechain conformation was analysed, and the total number of residues.

Mol	Chain	Analysed	Rotameric	Outliers	Percentiles	
1	A	211/293 (72%)	188 (89%)	23 (11%)	6	19
2	B	168/168 (100%)	149 (89%)	19 (11%)	6	18
All	All	379/461 (82%)	337 (89%)	42 (11%)	6	19

All (42) residues with a non-rotameric sidechain are listed below:

Mol	Chain	Res	Type
1	A	36	LEU
1	A	38	VAL
1	A	41	VAL
1	A	59	LEU
1	A	60	LEU
1	A	106	ARG
1	A	111	ARG
1	A	112	ARG
1	A	113	LEU
1	A	152	ARG
1	A	174	LEU
1	A	191	GLU
1	A	211	LEU
1	A	231	VAL
1	A	294	PHE
1	A	296	LEU
1	A	303	LEU
1	A	306	LEU

Continued on next page...

Continued from previous page...

Mol	Chain	Res	Type
1	A	310	LEU
1	A	312	SER
1	A	313	CYS
1	A	315	ILE
1	A	336	LEU
2	B	1047	ARG
2	B	1052	VAL
2	B	1053	ASP
2	B	1069	GLN
2	B	1116	VAL
2	B	1117	ASP
2	B	1137	CYS
2	B	1138	LEU
2	B	1156	ASN
2	B	1157	GLU
2	B	1158	THR
2	B	1178	LEU
2	B	1179	GLU
2	B	1180	LEU
2	B	1182	ARG
2	B	1183	SER
2	B	1186	SER
2	B	1188	PHE
2	B	1194	LYS

Sometimes sidechains can be flipped to improve hydrogen bonding and reduce clashes. There are no such sidechains identified.

5.3.3 RNA [i](#)

There are no RNA molecules in this entry.

5.4 Non-standard residues in protein, DNA, RNA chains [i](#)

There are no non-standard protein/DNA/RNA residues in this entry.

5.5 Carbohydrates [i](#)

There are no monosaccharides in this entry.

5.6 Ligand geometry

7 ligands are modelled in this entry.

In the following table, the Counts columns list the number of bonds (or angles) for which Mogul statistics could be retrieved, the number of bonds (or angles) that are observed in the model and the number of bonds (or angles) that are defined in the Chemical Component Dictionary. The Link column lists molecule types, if any, to which the group is linked. The Z score for a bond length (or angle) is the number of standard deviations the observed value is removed from the expected value. A bond length (or angle) with $|Z| > 2$ is considered an outlier worth inspection. RMSZ is the root-mean-square of all Z scores of the bond lengths (or angles).

Mol	Type	Chain	Res	Link	Bond lengths			Bond angles		
					Counts	RMSZ	# Z > 2	Counts	RMSZ	# Z > 2
6	1PE	A	1605	-	15,15,15	0.54	0	14,14,14	0.31	0
4	PEG	A	1602	-	6,6,6	0.13	0	5,5,5	0.11	0
4	PEG	A	1604	-	6,6,6	0.15	0	5,5,5	0.06	0
7	NN6	A	1607	-	27,28,28	2.97	8 (29%)	35,41,41	2.20	12 (34%)
5	PG4	A	1603	-	12,12,12	0.23	0	11,11,11	0.15	0
3	PGE	A	1601	-	9,9,9	0.31	0	8,8,8	0.37	0
4	PEG	A	1606	-	6,6,6	0.14	0	5,5,5	0.08	0

In the following table, the Chirals column lists the number of chiral outliers, the number of chiral centers analysed, the number of these observed in the model and the number defined in the Chemical Component Dictionary. Similar counts are reported in the Torsion and Rings columns. '-' means no outliers of that kind were identified.

Mol	Type	Chain	Res	Link	Chirals	Torsions	Rings
6	1PE	A	1605	-	-	4/13/13/13	-
4	PEG	A	1602	-	-	0/4/4/4	-
4	PEG	A	1604	-	-	1/4/4/4	-
7	NN6	A	1607	-	-	1/12/21/21	0/3/3/3
5	PG4	A	1603	-	-	4/10/10/10	-
3	PGE	A	1601	-	-	2/7/7/7	-
4	PEG	A	1606	-	-	0/4/4/4	-

All (8) bond length outliers are listed below:

Mol	Chain	Res	Type	Atoms	Z	Observed(Å)	Ideal(Å)
7	A	1607	NN6	C15-C16	-7.87	1.40	1.50
7	A	1607	NN6	C02-N04	-7.53	1.24	1.34
7	A	1607	NN6	C02-N03	6.42	1.45	1.33
7	A	1607	NN6	C02-N01	6.09	1.44	1.33
7	A	1607	NN6	C25-C10	-3.86	1.34	1.40

Continued on next page...

Continued from previous page...

Mol	Chain	Res	Type	Atoms	Z	Observed(Å)	Ideal(Å)
7	A	1607	NN6	O06-C05	-2.73	1.18	1.23
7	A	1607	NN6	C10-C11	2.47	1.42	1.38
7	A	1607	NN6	C05-N04	2.04	1.44	1.40

All (12) bond angle outliers are listed below:

Mol	Chain	Res	Type	Atoms	Z	Observed(°)	Ideal(°)
7	A	1607	NN6	C15-C16-C23	-5.25	117.35	122.64
7	A	1607	NN6	C09-C08-N07	4.98	115.91	110.04
7	A	1607	NN6	C23-C16-C17	4.54	119.01	114.56
7	A	1607	NN6	C02-N04-C05	4.32	122.29	118.46
7	A	1607	NN6	C17-C19-C20	3.24	120.02	116.62
7	A	1607	NN6	C19-C17-C16	-2.86	120.18	123.45
7	A	1607	NN6	C23-C22-C20	2.86	119.62	116.62
7	A	1607	NN6	C13-C11-C10	-2.82	118.91	124.02
7	A	1607	NN6	C25-C26-N07	2.71	116.54	111.75
7	A	1607	NN6	C22-C23-C16	-2.56	120.53	123.45
7	A	1607	NN6	C22-C20-C19	-2.29	120.63	123.52
7	A	1607	NN6	F18-C17-C16	2.26	122.74	119.52

There are no chirality outliers.

All (12) torsion outliers are listed below:

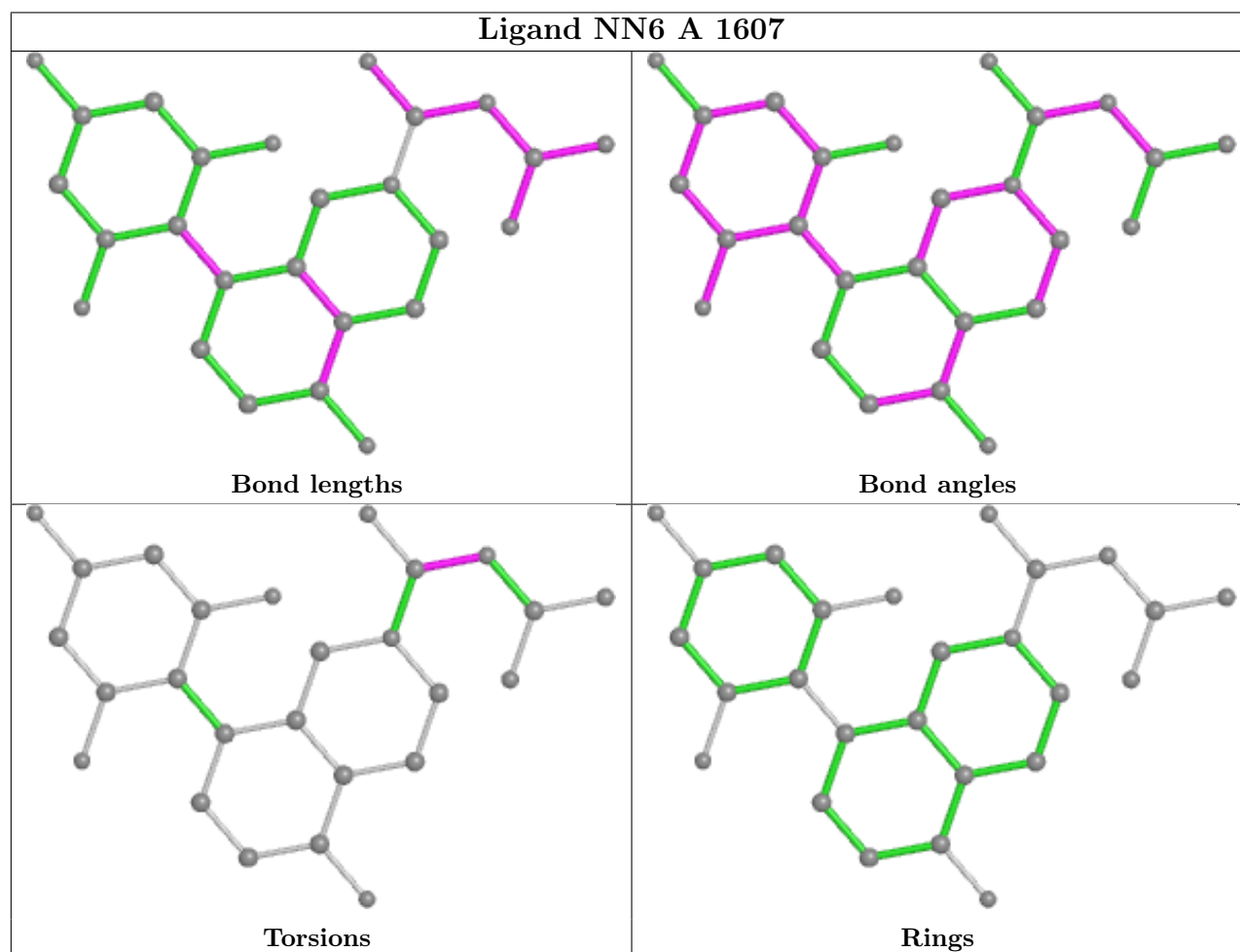
Mol	Chain	Res	Type	Atoms
6	A	1605	1PE	C14-C24-OH4-C13
6	A	1605	1PE	OH5-C14-C24-OH4
5	A	1603	PG4	O3-C5-C6-O4
6	A	1605	1PE	OH6-C15-C25-OH5
3	A	1601	PGE	O3-C5-C6-O4
4	A	1604	PEG	C4-C3-O2-C2
7	A	1607	NN6	N07-C05-N04-C02
5	A	1603	PG4	C5-C6-O4-C7
6	A	1605	1PE	C23-C13-OH4-C24
3	A	1601	PGE	C6-C5-O3-C4
5	A	1603	PG4	C6-C5-O3-C4
5	A	1603	PG4	O2-C3-C4-O3

There are no ring outliers.

4 monomers are involved in 4 short contacts:

Mol	Chain	Res	Type	Clashes	Symm-Clashes
6	A	1605	1PE	1	0
4	A	1604	PEG	1	0
7	A	1607	NN6	2	0
5	A	1603	PG4	1	0

The following is a two-dimensional graphical depiction of Mogul quality analysis of bond lengths, bond angles, torsion angles, and ring geometry for all instances of the Ligand of Interest. In addition, ligands with molecular weight > 250 and outliers as shown on the validation Tables will also be included. For torsion angles, if less than 5% of the Mogul distribution of torsion angles is within 10 degrees of the torsion angle in question, then that torsion angle is considered an outlier. Any bond that is central to one or more torsion angles identified as an outlier by Mogul will be highlighted in the graph. For rings, the root-mean-square deviation (RMSD) between the ring in question and similar rings identified by Mogul is calculated over all ring torsion angles. If the average RMSD is greater than 60 degrees and the minimal RMSD between the ring in question and any Mogul-identified rings is also greater than 60 degrees, then that ring is considered an outlier. The outliers are highlighted in purple. The color gray indicates Mogul did not find sufficient equivalents in the CSD to analyse the geometry.



5.7 Other polymers [i](#)

There are no such residues in this entry.

5.8 Polymer linkage issues [i](#)

There are no chain breaks in this entry.

6 Fit of model and data [i](#)

6.1 Protein, DNA and RNA chains [i](#)

In the following table, the column labelled ‘#RSRZ > 2’ contains the number (and percentage) of RSRZ outliers, followed by percent RSRZ outliers for the chain as percentile scores relative to all X-ray entries and entries of similar resolution. The OWAB column contains the minimum, median, 95th percentile and maximum values of the occupancy-weighted average B-factor per residue. The column labelled ‘Q < 0.9’ lists the number of (and percentage) of residues with an average occupancy less than 0.9.

Mol	Chain	Analysed	<RSRZ>	#RSRZ>2	OWAB(Å ²)	Q<0.9
1	A	254/336 (75%)	0.02	12 (4%) 31 22	46, 62, 98, 140	0
2	B	199/200 (99%)	0.05	5 (2%) 57 47	51, 65, 88, 104	0
All	All	453/536 (84%)	0.03	17 (3%) 40 30	46, 63, 94, 140	0

All (17) RSRZ outliers are listed below:

Mol	Chain	Res	Type	RSRZ
1	A	180	GLY	4.6
1	A	311	CYS	3.4
2	B	1180	LEU	3.4
1	A	179	PHE	3.2
1	A	178	LEU	2.9
1	A	106	ARG	2.8
1	A	282	ARG	2.6
2	B	1182	ARG	2.5
1	A	312	SER	2.4
2	B	1184	ASP	2.4
1	A	66	LEU	2.4
2	B	1004	ASN	2.4
2	B	1188	PHE	2.4
1	A	76	HIS	2.2
1	A	103	SER	2.1
1	A	100	HIS	2.0
1	A	181	TRP	2.0

6.2 Non-standard residues in protein, DNA, RNA chains [i](#)

There are no non-standard protein/DNA/RNA residues in this entry.

6.3 Carbohydrates [i](#)

There are no monosaccharides in this entry.

6.4 Ligands [i](#)

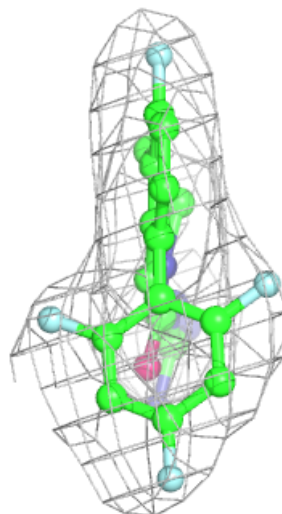
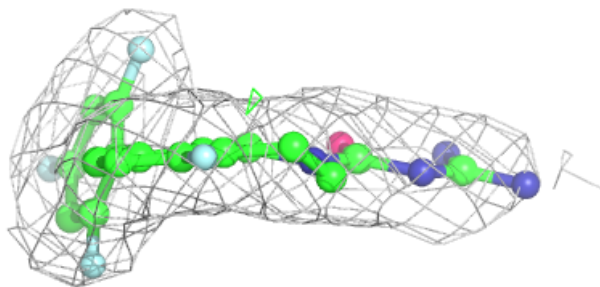
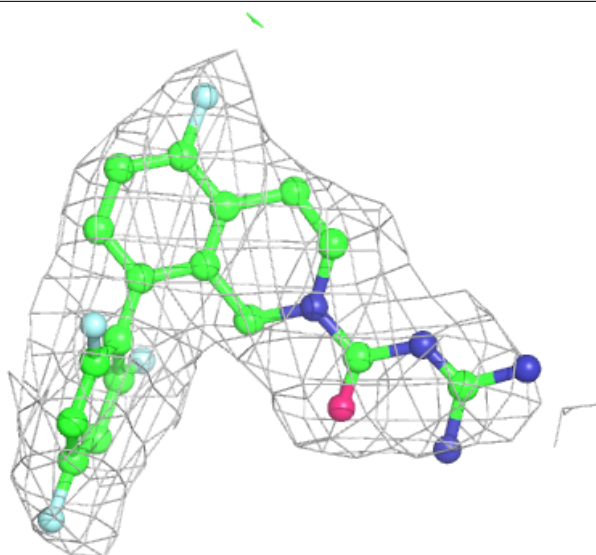
In the following table, the Atoms column lists the number of modelled atoms in the group and the number defined in the chemical component dictionary. The B-factors column lists the minimum, median, 95th percentile and maximum values of B factors of atoms in the group. The column labelled 'Q< 0.9' lists the number of atoms with occupancy less than 0.9.

Mol	Type	Chain	Res	Atoms	RSCC	RSR	B-factors(\AA^2)	Q<0.9
4	PEG	A	1604	7/7	0.72	0.21	82,86,89,95	0
4	PEG	A	1606	7/7	0.78	0.34	65,72,73,81	0
5	PG4	A	1603	13/13	0.83	0.24	65,76,79,84	0
4	PEG	A	1602	7/7	0.88	0.20	60,62,65,68	0
6	1PE	A	1605	16/16	0.88	0.28	49,63,76,77	0
3	PGE	A	1601	10/10	0.92	0.16	61,65,74,74	0
7	NN6	A	1607	26/26	0.94	0.17	52,61,69,74	0

The following is a graphical depiction of the model fit to experimental electron density of all instances of the Ligand of Interest. In addition, ligands with molecular weight > 250 and outliers as shown on the geometry validation Tables will also be included. Each fit is shown from different orientation to approximate a three-dimensional view.

Electron density around NN6 A 1607:

$2mF_o-DF_c$ (at 0.7 rmsd) in gray
 mF_o-DF_c (at 3 rmsd) in purple (negative)
and green (positive)



6.5 Other polymers [i](#)

There are no such residues in this entry.