



# Full wwPDB X-ray Structure Validation Report ⓘ

May 16, 2020 – 03:01 pm BST

PDB ID : 4UN1  
Title : Sirohaem decarboxylase AhbA/B - an enzyme with structural homology to the Lrp/AsnC transcription factor family that is part of the alternative haem biosynthesis pathway.  
Authors : Palmer, D.J.; Brown, D.G.; Warren, M.J.; Pickersgill, R.W.  
Deposited on : 2014-05-23  
Resolution : 1.97 Å(reported)

This is a Full wwPDB X-ray Structure Validation Report for a publicly released PDB entry.

We welcome your comments at [validation@mail.wwpdb.org](mailto:validation@mail.wwpdb.org)

A user guide is available at

<https://www.wwpdb.org/validation/2017/XrayValidationReportHelp>

with specific help available everywhere you see the ⓘ symbol.

---

The following versions of software and data (see [references ⓘ](#)) were used in the production of this report:

MolProbity : 4.02b-467  
Mogul : 1.8.5 (274361), CSD as541be (2020)  
Xtriage (Phenix) : 1.13  
EDS : 2.11  
buster-report : 1.1.7 (2018)  
Percentile statistics : 20191225.v01 (using entries in the PDB archive December 25th 2019)  
Refmac : 5.8.0158  
CCP4 : 7.0.044 (Gargrove)  
Ideal geometry (proteins) : Engh & Huber (2001)  
Ideal geometry (DNA, RNA) : Parkinson et al. (1996)  
Validation Pipeline (wwPDB-VP) : 2.11

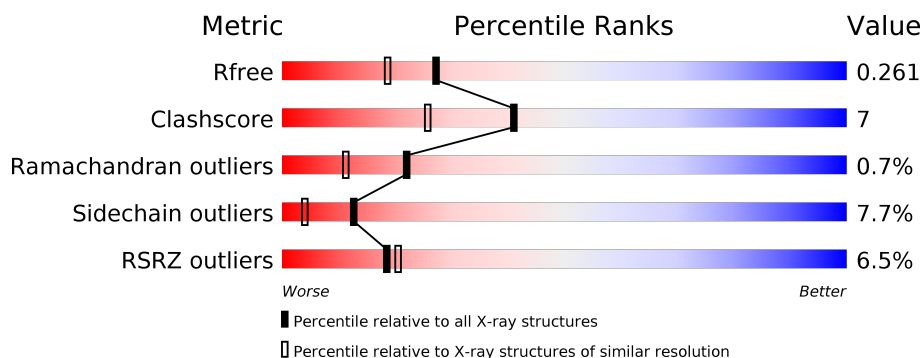
# 1 Overall quality at a glance ⓘ

The following experimental techniques were used to determine the structure:

## *X-RAY DIFFRACTION*

The reported resolution of this entry is 1.97 Å.

Percentile scores (ranging between 0-100) for global validation metrics of the entry are shown in the following graphic. The table shows the number of entries on which the scores are based.



Metric	Whole archive (#Entries)	Similar resolution (#Entries, resolution range(Å))
$R_{free}$	130704	11647 (2.00-1.96)
Clashscore	141614	1014 (1.98-1.98)
Ramachandran outliers	138981	1006 (1.98-1.98)
Sidechain outliers	138945	1006 (1.98-1.98)
RSRZ outliers	127900	11410 (2.00-1.96)

The table below summarises the geometric issues observed across the polymeric chains and their fit to the electron density. The red, orange, yellow and green segments on the lower bar indicate the fraction of residues that contain outliers for  $\geq 3$ , 2, 1 and 0 types of geometric quality criteria respectively. A grey segment represents the fraction of residues that are not modelled. The numeric value for each fraction is indicated below the corresponding segment, with a dot representing fractions  $\leq 5\%$ . The upper red bar (where present) indicates the fraction of residues that have poor fit to the electron density. The numeric value is given above the bar.

Mol	Chain	Length	Quality of chain
1	A	173	<div> <div>4%</div> <div> <div></div> <div>70%</div> <div>10%</div> <div>•</div> <div>16%</div> </div> </div>
1	C	173	<div> <div>%</div> <div> <div></div> <div>69%</div> <div>9%</div> <div>••</div> <div>20%</div> </div> </div>
2	B	179	<div> <div>12%</div> <div> <div></div> <div>71%</div> <div>16%</div> <div>••</div> <div>11%</div> </div> </div>
2	D	179	<div> <div>4%</div> <div> <div></div> <div>70%</div> <div>15%</div> <div>••</div> <div>12%</div> </div> </div>

## 2 Entry composition

There are 4 unique types of molecules in this entry. The entry contains 5119 atoms, of which 0 are hydrogens and 0 are deuteriums.

In the tables below, the ZeroOcc column contains the number of atoms modelled with zero occupancy, the AltConf column contains the number of residues with at least one atom in alternate conformation and the Trace column contains the number of residues modelled with at most 2 atoms.

- Molecule 1 is a protein called PUTATIVE TRANSCRIPTIONAL REGULATOR, ASNC FAMILY.

Mol	Chain	Residues	Atoms					ZeroOcc	AltConf	Trace
1	A	145	Total	C	N	O	S	0	0	0
			1131	719	201	207	4			
1	C	139	Total	C	N	O	S	0	0	0
			1083	687	192	201	3			

- Molecule 2 is a protein called PUTATIVE TRANSCRIPTIONAL REGULATOR, ASNC FAMILY.

Mol	Chain	Residues	Atoms					ZeroOcc	AltConf	Trace
2	B	159	Total	C	N	O	S	0	0	0
			1233	772	219	234	8			
2	D	157	Total	C	N	O	S	0	0	0
			1234	775	219	233	7			

There are 40 discrepancies between the modelled and reference sequences:

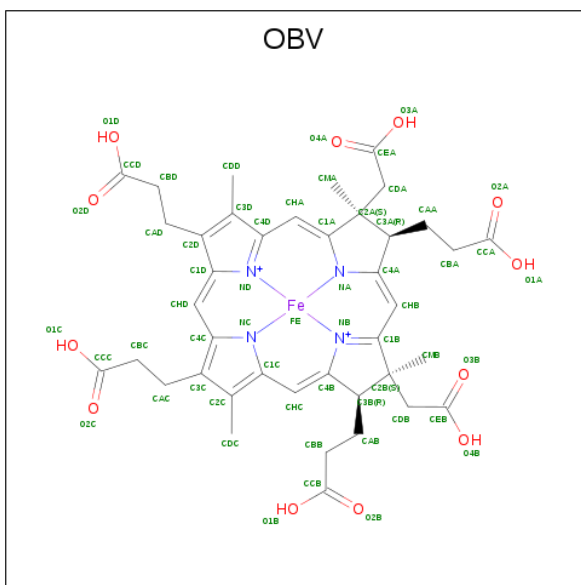
Chain	Residue	Modelled	Actual	Comment	Reference
B	-19	MET	-	expression tag	UNP B8J3A4
B	-18	GLY	-	expression tag	UNP B8J3A4
B	-17	SER	-	expression tag	UNP B8J3A4
B	-16	SER	-	expression tag	UNP B8J3A4
B	-15	HIS	-	expression tag	UNP B8J3A4
B	-14	HIS	-	expression tag	UNP B8J3A4
B	-13	HIS	-	expression tag	UNP B8J3A4
B	-12	HIS	-	expression tag	UNP B8J3A4
B	-11	HIS	-	expression tag	UNP B8J3A4
B	-10	HIS	-	expression tag	UNP B8J3A4
B	-9	SER	-	expression tag	UNP B8J3A4
B	-8	SER	-	expression tag	UNP B8J3A4
B	-7	GLY	-	expression tag	UNP B8J3A4
B	-6	LEU	-	expression tag	UNP B8J3A4
B	-5	VAL	-	expression tag	UNP B8J3A4

*Continued on next page...*

*Continued from previous page...*

Chain	Residue	Modelled	Actual	Comment	Reference
B	-4	PRO	-	expression tag	UNP B8J3A4
B	-3	ARG	-	expression tag	UNP B8J3A4
B	-2	GLY	-	expression tag	UNP B8J3A4
B	-1	SER	-	expression tag	UNP B8J3A4
B	0	HIS	-	expression tag	UNP B8J3A4
D	-19	MET	-	expression tag	UNP B8J3A4
D	-18	GLY	-	expression tag	UNP B8J3A4
D	-17	SER	-	expression tag	UNP B8J3A4
D	-16	SER	-	expression tag	UNP B8J3A4
D	-15	HIS	-	expression tag	UNP B8J3A4
D	-14	HIS	-	expression tag	UNP B8J3A4
D	-13	HIS	-	expression tag	UNP B8J3A4
D	-12	HIS	-	expression tag	UNP B8J3A4
D	-11	HIS	-	expression tag	UNP B8J3A4
D	-10	HIS	-	expression tag	UNP B8J3A4
D	-9	SER	-	expression tag	UNP B8J3A4
D	-8	SER	-	expression tag	UNP B8J3A4
D	-7	GLY	-	expression tag	UNP B8J3A4
D	-6	LEU	-	expression tag	UNP B8J3A4
D	-5	VAL	-	expression tag	UNP B8J3A4
D	-4	PRO	-	expression tag	UNP B8J3A4
D	-3	ARG	-	expression tag	UNP B8J3A4
D	-2	GLY	-	expression tag	UNP B8J3A4
D	-1	SER	-	expression tag	UNP B8J3A4
D	0	HIS	-	expression tag	UNP B8J3A4

- Molecule 3 is 12,18-DIDECARBOXY-SIROHEME (three-letter code: OBV) (formula:  $C_{40}H_{44}FeN_4O_{12}$ ).



Mol	Chain	Residues	Atoms					ZeroOcc	AltConf
3	B	1	Total 57	C 40	Fe 1	N 4	O 12	0	0
3	C	1	Total 57	C 40	Fe 1	N 4	O 12	0	0

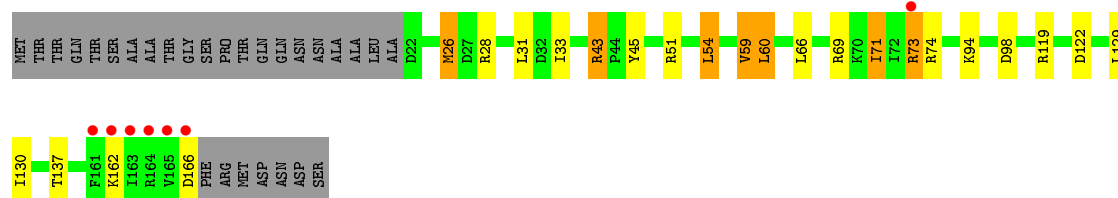
- Molecule 4 is water.

Mol	Chain	Residues	Atoms	ZeroOcc	AltConf
4	A	85	Total O 85 85	0	0
4	B	67	Total O 67 67	0	0
4	C	97	Total O 97 97	0	0
4	D	75	Total O 75 75	0	0

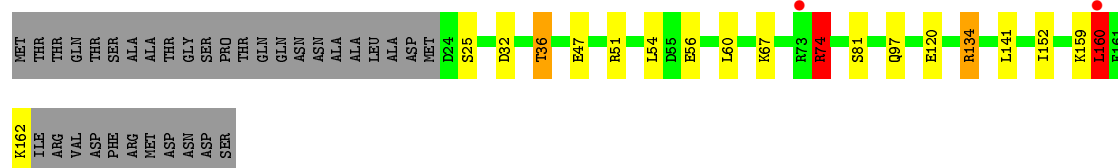
### 3 Residue-property plots [i](#)

These plots are drawn for all protein, RNA and DNA chains in the entry. The first graphic for a chain summarises the proportions of the various outlier classes displayed in the second graphic. The second graphic shows the sequence view annotated by issues in geometry and electron density. Residues are color-coded according to the number of geometric quality criteria for which they contain at least one outlier: green = 0, yellow = 1, orange = 2 and red = 3 or more. A red dot above a residue indicates a poor fit to the electron density ( $RSRZ > 2$ ). Stretches of 2 or more consecutive residues without any outlier are shown as a green connector. Residues present in the sample, but not in the model, are shown in grey.

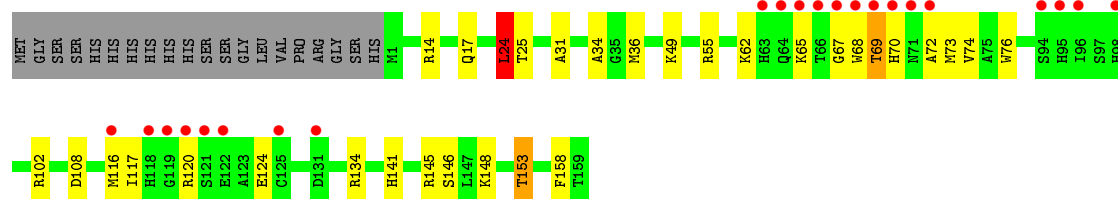
- Molecule 1: PUTATIVE TRANSCRIPTIONAL REGULATOR, ASNC FAMILY



- Molecule 1: PUTATIVE TRANSCRIPTIONAL REGULATOR, ASNC FAMILY



- Molecule 2: PUTATIVE TRANSCRIPTIONAL REGULATOR, ASNC FAMILY



- Molecule 2: PUTATIVE TRANSCRIPTIONAL REGULATOR, ASNC FAMILY





## 4 Data and refinement statistics

Property	Value	Source
Space group	P 21 21 21	Depositor
Cell constants a, b, c, $\alpha$ , $\beta$ , $\gamma$	55.30 Å 78.60 Å 150.30 Å 90.00° 90.00° 90.00°	Depositor
Resolution (Å)	45.23 – 1.97 45.23 – 1.97	Depositor EDS
% Data completeness (in resolution range)	99.2 (45.23-1.97) 99.2 (45.23-1.97)	Depositor EDS
$R_{merge}$	0.08	Depositor
$R_{sym}$	(Not available)	Depositor
$\langle I/\sigma(I) \rangle$ <sup>1</sup>	1.07 (at 1.97 Å)	Xtriage
Refinement program	REFMAC 5.7.0032	Depositor
R, $R_{free}$	0.202 , 0.257 0.208 , 0.261	Depositor DCC
$R_{free}$ test set	2333 reflections (5.00%)	wwPDB-VP
Wilson B-factor (Å <sup>2</sup> )	33.0	Xtriage
Anisotropy	0.131	Xtriage
Bulk solvent $k_{sol}$ (e/Å <sup>3</sup> ), $B_{sol}$ (Å <sup>2</sup> )	0.33 , 40.5	EDS
L-test for twinning <sup>2</sup>	$\langle  L  \rangle = 0.47$ , $\langle L^2 \rangle = 0.31$	Xtriage
Estimated twinning fraction	No twinning to report.	Xtriage
$F_o, F_c$ correlation	0.95	EDS
Total number of atoms	5119	wwPDB-VP
Average B, all atoms (Å <sup>2</sup> )	39.0	wwPDB-VP

Xtriage's analysis on translational NCS is as follows: *The largest off-origin peak in the Patterson function is 4.36% of the height of the origin peak. No significant pseudotranslation is detected.*

<sup>1</sup>Intensities estimated from amplitudes.

<sup>2</sup>Theoretical values of  $\langle |L| \rangle$ ,  $\langle L^2 \rangle$  for acentric reflections are 0.5, 0.333 respectively for untwinned datasets, and 0.375, 0.2 for perfectly twinned datasets.



## 5 Model quality

### 5.1 Standard geometry

Bond lengths and bond angles in the following residue types are not validated in this section: OBV

The Z score for a bond length (or angle) is the number of standard deviations the observed value is removed from the expected value. A bond length (or angle) with  $|Z| > 5$  is considered an outlier worth inspection. RMSZ is the root-mean-square of all Z scores of the bond lengths (or angles).

Mol	Chain	Bond lengths		Bond angles	
		RMSZ	# Z  >5	RMSZ	# Z  >5
1	A	0.87	0/1151	0.99	3/1558 (0.2%)
1	C	0.89	0/1103	1.06	6/1497 (0.4%)
2	B	0.86	0/1259	1.04	9/1704 (0.5%)
2	D	0.96	0/1262	1.07	6/1710 (0.4%)
All	All	0.89	0/4775	1.04	24/6469 (0.4%)

There are no bond length outliers.

All (24) bond angle outliers are listed below:

Mol	Chain	Res	Type	Atoms	Z	Observed(°)	Ideal(°)
2	D	145	ARG	NE-CZ-NH2	-9.45	115.58	120.30
2	D	145	ARG	NE-CZ-NH1	9.13	124.87	120.30
2	D	120	ARG	NE-CZ-NH1	8.38	124.49	120.30
1	C	134	ARG	NE-CZ-NH1	8.15	124.37	120.30
1	C	134	ARG	NE-CZ-NH2	-7.41	116.59	120.30
1	C	74	ARG	NE-CZ-NH1	7.26	123.93	120.30
2	B	134	ARG	NE-CZ-NH2	-6.79	116.90	120.30
2	D	120	ARG	NE-CZ-NH2	-6.48	117.06	120.30
1	C	74	ARG	NE-CZ-NH2	-6.46	117.07	120.30
2	B	102	ARG	NE-CZ-NH2	-6.36	117.12	120.30
2	D	145	ARG	CG-CD-NE	-6.09	99.01	111.80
2	B	55	ARG	NE-CZ-NH1	6.03	123.32	120.30
1	A	28	ARG	NE-CZ-NH1	5.92	123.26	120.30
1	C	51	ARG	NE-CZ-NH2	-5.87	117.37	120.30
2	B	134	ARG	CG-CD-NE	-5.80	99.61	111.80
1	C	160	LEU	CB-CG-CD2	5.76	120.78	111.00
2	B	34	ALA	C-N-CA	-5.75	110.21	122.30
2	D	16	VAL	CG1-CB-CG2	5.60	119.86	110.90
1	A	28	ARG	NE-CZ-NH2	-5.37	117.61	120.30
2	B	134	ARG	NE-CZ-NH1	5.33	122.96	120.30

*Continued on next page...*

*Continued from previous page...*

Mol	Chain	Res	Type	Atoms	Z	Observed(°)	Ideal(°)
1	A	74	ARG	NE-CZ-NH1	5.21	122.90	120.30
2	B	24	LEU	CB-CG-CD1	5.19	119.82	111.00
2	B	145	ARG	NE-CZ-NH1	5.07	122.83	120.30
2	B	73	MET	CG-SD-CE	-5.02	92.16	100.20

There are no chirality outliers.

There are no planarity outliers.

## 5.2 Too-close contacts

In the following table, the Non-H and H(model) columns list the number of non-hydrogen atoms and hydrogen atoms in the chain respectively. The H(added) column lists the number of hydrogen atoms added and optimized by MolProbity. The Clashes column lists the number of clashes within the asymmetric unit, whereas Symm-Clashes lists symmetry related clashes.

Mol	Chain	Non-H	H(model)	H(added)	Clashes	Symm-Clashes
1	A	1131	0	1148	16	0
1	C	1083	0	1087	16	0
2	B	1233	0	1207	14	0
2	D	1234	0	1209	23	0
3	B	57	0	38	9	0
3	C	57	0	38	6	0
4	A	85	0	0	4	0
4	B	67	0	0	2	0
4	C	97	0	0	8	0
4	D	75	0	0	3	0
All	All	5119	0	4727	68	0

The all-atom clashscore is defined as the number of clashes found per 1000 atoms (including hydrogen atoms). The all-atom clashscore for this structure is 7.

All (68) close contacts within the same asymmetric unit are listed below, sorted by their clash magnitude.

Atom-1	Atom-2	Interatomic distance (Å)	Clash overlap (Å)
4:A:2056:HOH:O	2:B:153:THR:HG21	1.58	1.03
1:A:43:ARG:HH11	1:A:43:ARG:HG2	1.35	0.92
2:D:120:ARG:NE	4:D:2055:HOH:O	2.15	0.80
3:B:1160:OBV:CDB	3:B:1160:OBV:CCB	2.67	0.72
2:B:67:GLY:O	2:B:69:THR:N	2.23	0.72
2:B:31:ALA:HB1	2:B:36:MET:O	1.92	0.70

*Continued on next page...*

*Continued from previous page...*

Atom-1	Atom-2	Interatomic distance (Å)	Clash overlap (Å)
1:C:162:LYS:HA	4:C:2096:HOH:O	1.92	0.69
3:B:1160:OBV:CCB	3:B:1160:OBV:HDB2	2.22	0.69
1:A:43:ARG:HH11	1:A:43:ARG:CG	2.05	0.68
1:C:162:LYS:C	4:C:2096:HOH:O	2.32	0.66
2:B:17:GLN:HE22	2:B:158:PHE:H	1.45	0.65
4:A:2056:HOH:O	2:B:153:THR:CG2	2.31	0.65
1:C:32:ASP:O	1:C:36:THR:HG23	1.99	0.62
1:A:43:ARG:HG2	1:A:43:ARG:NH1	2.06	0.62
2:D:120:ARG:HH11	2:D:120:ARG:HG2	1.65	0.60
2:D:135:THR:HG21	4:D:2065:HOH:O	2.03	0.59
2:B:49:LYS:NZ	4:B:2034:HOH:O	2.35	0.59
1:A:33:ILE:HD12	1:A:51:ARG:NH2	2.17	0.59
3:C:1163:OBV:O2C	2:D:116:MET:CE	2.51	0.59
2:D:73:MET:HG3	2:D:116:MET:SD	2.42	0.58
2:B:120:ARG:N	2:B:124:GLU:OE1	2.36	0.58
1:C:162:LYS:CA	4:C:2096:HOH:O	2.52	0.58
2:D:139:LYS:O	2:D:141:HIS:HD2	1.88	0.57
1:A:130:ILE:HD11	3:B:1160:OBV:HAB1	1.87	0.56
2:D:66:THR:HG22	2:D:68:TRP:O	2.06	0.56
3:C:1163:OBV:O3A	3:C:1163:OBV:HMA1	2.08	0.54
2:B:72:ALA:HB3	2:B:117:ILE:HB	1.91	0.53
3:B:1160:OBV:HDB1	3:B:1160:OBV:CCB	2.38	0.53
3:C:1163:OBV:O1C	2:D:98:HIS:HE1	1.93	0.52
1:C:74:ARG:HG2	2:D:18:ALA:O	2.10	0.51
1:A:31:LEU:HD11	1:A:71:ILE:HD11	1.92	0.51
2:D:120:ARG:HH11	2:D:120:ARG:CG	2.24	0.51
1:C:162:LYS:CB	2:D:97:SER:O	2.60	0.50
1:C:160:LEU:CB	4:C:2094:HOH:O	2.60	0.49
1:C:97:GLN:HG3	4:C:2053:HOH:O	2.12	0.49
1:A:45:TYR:HD1	1:A:59:VAL:HG22	1.76	0.49
1:A:73:ARG:HD2	2:B:62:LYS:HG2	1.95	0.49
2:B:69:THR:HG23	2:B:120:ARG:HA	1.95	0.49
1:A:60:LEU:HD12	2:B:24:LEU:HD13	1.94	0.48
1:A:66:LEU:HD22	1:A:71:ILE:HG12	1.96	0.48
1:C:160:LEU:HB2	4:C:2094:HOH:O	2.13	0.48
2:B:14:ARG:NH2	2:D:159:THR:O	2.42	0.47
1:C:81:SER:HB3	2:D:157:TYR:OH	2.15	0.47
1:A:69:ARG:HD3	4:A:2029:HOH:O	2.15	0.46
1:A:166:ASP:N	4:A:2083:HOH:O	2.45	0.46
3:C:1163:OBV:HDC2	3:C:1163:OBV:HBC1	1.98	0.46
2:D:134:ARG:HD3	4:D:2063:HOH:O	2.16	0.45

*Continued on next page...*

Continued from previous page...

Atom-1	Atom-2	Interatomic distance (Å)	Clash overlap (Å)
1:C:159:LYS:HE3	2:D:84:ASP:OD1	2.16	0.45
2:D:13:LEU:HD13	2:D:158:PHE:CZ	2.52	0.45
1:C:120:GLU:OE1	2:D:145:ARG:NH1	2.47	0.44
4:B:2009:HOH:O	2:D:159:THR:HG23	2.18	0.44
1:A:119:ARG:NH2	3:B:1160:OBV:O2D	2.51	0.43
2:D:70:HIS:CD2	2:D:122:GLU:OE1	2.70	0.43
1:C:60:LEU:HD22	2:D:24:LEU:CD2	2.49	0.43
1:C:141:LEU:HD22	1:C:152:ILE:HG21	1.99	0.42
3:B:1160:OBV:CBB	3:B:1160:OBV:HDB2	2.50	0.42
1:A:94:LYS:NZ	2:B:108:ASP:OD2	2.42	0.42
2:B:76:TRP:CE3	2:B:141:HIS:HB3	2.55	0.42
1:C:47:GLU:HG3	4:C:2024:HOH:O	2.19	0.41
1:C:56:GLU:HG2	2:D:24:LEU:HD22	2.03	0.41
1:A:26:MET:HG2	1:A:54:LEU:HD21	2.03	0.41
1:A:129:LEU:HD23	1:A:137:THR:HG23	2.02	0.41
3:B:1160:OBV:CBA	3:B:1160:OBV:HDA1	2.51	0.41
3:B:1160:OBV:CCA	3:B:1160:OBV:HDA1	2.51	0.40
3:B:1160:OBV:O1B	3:B:1160:OBV:HDB2	2.20	0.40
3:C:1163:OBV:HHA	3:C:1163:OBV:HDA2	1.85	0.40
3:C:1163:OBV:O2C	2:D:116:MET:HE3	2.19	0.40
4:C:2011:HOH:O	2:D:49:LYS:HE3	2.22	0.40

There are no symmetry-related clashes.

## 5.3 Torsion angles [i](#)

### 5.3.1 Protein backbone [i](#)

In the following table, the Percentiles column shows the percent Ramachandran outliers of the chain as a percentile score with respect to all X-ray entries followed by that with respect to entries of similar resolution.

The Analysed column shows the number of residues for which the backbone conformation was analysed, and the total number of residues.

Mol	Chain	Analysed	Favoured	Allowed	Outliers	Percentiles	
1	A	143/173 (83%)	140 (98%)	3 (2%)	0	100	100
1	C	137/173 (79%)	132 (96%)	5 (4%)	0	100	100
2	B	157/179 (88%)	142 (90%)	12 (8%)	3 (2%)	8	1
2	D	155/179 (87%)	148 (96%)	6 (4%)	1 (1%)	25	14

Continued on next page...

*Continued from previous page...*

Mol	Chain	Analysed	Favoured	Allowed	Outliers	Percentiles	
All	All	592/704 (84%)	562 (95%)	26 (4%)	4 (1%)	22	11

All (4) Ramachandran outliers are listed below:

Mol	Chain	Res	Type
2	B	68	TRP
2	B	65	LYS
2	D	62	LYS
2	B	70	HIS

### 5.3.2 Protein sidechains ⓘ

In the following table, the Percentiles column shows the percent sidechain outliers of the chain as a percentile score with respect to all X-ray entries followed by that with respect to entries of similar resolution.

The Analysed column shows the number of residues for which the sidechain conformation was analysed, and the total number of residues.

Mol	Chain	Analysed	Rotameric	Outliers	Percentiles	
1	A	120/146 (82%)	110 (92%)	10 (8%)	11	3
1	C	115/146 (79%)	108 (94%)	7 (6%)	18	8
2	B	130/152 (86%)	122 (94%)	8 (6%)	18	8
2	D	131/152 (86%)	118 (90%)	13 (10%)	8	1
All	All	496/596 (83%)	458 (92%)	38 (8%)	13	4

All (38) residues with a non-rotameric sidechain are listed below:

Mol	Chain	Res	Type
1	A	26	MET
1	A	43	ARG
1	A	54	LEU
1	A	59	VAL
1	A	60	LEU
1	A	71	ILE
1	A	73	ARG
1	A	98	ASP
1	A	122	ASP
1	A	162	LYS
2	B	24	LEU

*Continued on next page...*

*Continued from previous page...*

Mol	Chain	Res	Type
2	B	25	THR
2	B	69	THR
2	B	74	VAL
2	B	116	MET
2	B	146	SER
2	B	148	LYS
2	B	153	THR
1	C	25	SER
1	C	36	THR
1	C	54	LEU
1	C	67	LYS
1	C	74	ARG
1	C	134	ARG
1	C	160	LEU
2	D	16	VAL
2	D	32	GLU
2	D	56	ARG
2	D	63	HIS
2	D	64	GLN
2	D	79	THR
2	D	81	ASP
2	D	107	PRO
2	D	120	ARG
2	D	126	LEU
2	D	134	ARG
2	D	145	ARG
2	D	159	THR

Some sidechains can be flipped to improve hydrogen bonding and reduce clashes. All (7) such sidechains are listed below:

Mol	Chain	Res	Type
1	A	80	GLN
2	B	10	GLN
2	B	17	GLN
2	B	95	HIS
2	B	141	HIS
2	D	98	HIS
2	D	141	HIS

### 5.3.3 RNA ⓘ

There are no RNA molecules in this entry.

## 5.4 Non-standard residues in protein, DNA, RNA chains ⓘ

There are no non-standard protein/DNA/RNA residues in this entry.

## 5.5 Carbohydrates ⓘ

There are no carbohydrates in this entry.

## 5.6 Ligand geometry ⓘ

2 ligands are modelled in this entry.

In the following table, the Counts columns list the number of bonds (or angles) for which Mogul statistics could be retrieved, the number of bonds (or angles) that are observed in the model and the number of bonds (or angles) that are defined in the Chemical Component Dictionary. The Link column lists molecule types, if any, to which the group is linked. The Z score for a bond length (or angle) is the number of standard deviations the observed value is removed from the expected value. A bond length (or angle) with  $|Z| > 2$  is considered an outlier worth inspection. RMSZ is the root-mean-square of all Z scores of the bond lengths (or angles).

Mol	Type	Chain	Res	Link	Bond lengths			Bond angles		
					Counts	RMSZ	$\# Z  > 2$	Counts	RMSZ	$\# Z  > 2$
3	OBV	B	1160	1	42,64,64	2.46	14 (33%)	49,104,104	2.78	21 (42%)
3	OBV	C	1163	-	42,64,64	2.29	14 (33%)	49,104,104	2.74	23 (46%)

In the following table, the Chirals column lists the number of chiral outliers, the number of chiral centers analysed, the number of these observed in the model and the number defined in the Chemical Component Dictionary. Similar counts are reported in the Torsion and Rings columns. '-' means no outliers of that kind were identified.

Mol	Type	Chain	Res	Link	Chirals	Torsions	Rings
3	OBV	B	1160	1	-	11/18/138/138	-
3	OBV	C	1163	-	-	12/18/138/138	-

All (28) bond length outliers are listed below:

Mol	Chain	Res	Type	Atoms	Z	Observed(Å)	Ideal(Å)
3	B	1160	OBV	C4A-NA	-8.76	1.25	1.35

*Continued on next page...*

*Continued from previous page...*

Mol	Chain	Res	Type	Atoms	Z	Observed(Å)	Ideal(Å)
3	C	1163	OBV	C4A-NA	-7.99	1.26	1.35
3	B	1160	OBV	C2D-C3D	5.39	1.48	1.36
3	C	1163	OBV	C2D-C3D	4.98	1.47	1.36
3	C	1163	OBV	CHD-C1D	4.89	1.47	1.35
3	B	1160	OBV	CHD-C1D	4.88	1.47	1.35
3	B	1160	OBV	C1D-ND	-4.34	1.32	1.40
3	B	1160	OBV	C3C-C2C	3.90	1.49	1.37
3	B	1160	OBV	CHB-C4A	3.78	1.44	1.36
3	C	1163	OBV	C1D-C2D	3.76	1.51	1.45
3	C	1163	OBV	C3C-C2C	3.38	1.47	1.37
3	B	1160	OBV	CHA-C4D	3.25	1.46	1.39
3	C	1163	OBV	CHB-C4A	3.20	1.43	1.36
3	C	1163	OBV	CHB-C1B	-3.11	1.32	1.41
3	B	1160	OBV	C1C-CHC	3.07	1.49	1.41
3	C	1163	OBV	CHA-C4D	2.98	1.46	1.39
3	B	1160	OBV	C4C-CHD	2.83	1.48	1.41
3	B	1160	OBV	C1D-C2D	2.75	1.49	1.45
3	C	1163	OBV	C1D-ND	-2.66	1.35	1.40
3	C	1163	OBV	C4D-C3D	2.65	1.49	1.44
3	C	1163	OBV	FE-ND	2.62	2.11	1.97
3	B	1160	OBV	FE-NB	-2.58	1.83	1.97
3	C	1163	OBV	C4C-CHD	2.56	1.48	1.41
3	B	1160	OBV	CHB-C1B	-2.47	1.34	1.41
3	B	1160	OBV	C4D-ND	-2.13	1.34	1.38
3	C	1163	OBV	C4D-ND	-2.08	1.34	1.38
3	B	1160	OBV	FE-ND	2.04	2.08	1.97
3	C	1163	OBV	C1C-CHC	2.00	1.46	1.41

All (44) bond angle outliers are listed below:

Mol	Chain	Res	Type	Atoms	Z	Observed(°)	Ideal(°)
3	C	1163	OBV	C1C-C2C-C3C	-6.72	102.32	107.00
3	B	1160	OBV	CDB-C2B-C3B	6.69	126.32	108.39
3	B	1160	OBV	C4B-NB-C1B	6.46	109.30	106.48
3	C	1163	OBV	C3D-C4D-ND	6.37	117.51	109.88
3	B	1160	OBV	C3B-C2B-C1B	-5.78	91.00	100.92
3	B	1160	OBV	C4D-C3D-C2D	-5.76	100.90	106.96
3	B	1160	OBV	CDA-C2A-C3A	5.65	123.52	108.39
3	C	1163	OBV	C2D-C1D-ND	5.58	116.37	110.17
3	B	1160	OBV	C3D-C4D-ND	5.39	116.34	109.88
3	C	1163	OBV	C4D-C3D-C2D	-4.54	102.18	106.96
3	C	1163	OBV	C2A-C1A-CHA	-4.35	117.71	123.37

*Continued on next page...*



*Continued from previous page...*

Mol	Chain	Res	Type	Atoms	Z	Observed(°)	Ideal(°)
3	C	1163	OBV	C2B-C1B-CHB	-4.22	116.59	123.35
3	B	1160	OBV	C1C-C2C-C3C	-4.13	104.12	107.00
3	C	1163	OBV	CAB-C3B-C4B	3.98	118.20	111.19
3	C	1163	OBV	CAC-CBC-CCC	-3.81	106.27	112.67
3	C	1163	OBV	CDB-C2B-C3B	3.73	118.39	108.39
3	C	1163	OBV	CHA-C4D-ND	-3.72	120.38	124.42
3	B	1160	OBV	C1C-CHC-C4B	-3.60	122.99	130.12
3	B	1160	OBV	CHB-C4A-NA	-3.52	121.27	125.54
3	B	1160	OBV	CAB-C3B-C4B	-3.51	105.00	111.19
3	C	1163	OBV	C1D-C2D-C3D	-3.48	101.83	106.90
3	C	1163	OBV	CHD-C1D-ND	-3.37	120.21	124.38
3	C	1163	OBV	CDD-C3D-C4D	3.33	130.10	125.04
3	C	1163	OBV	CBC-CAC-C3C	-3.25	106.48	112.49
3	C	1163	OBV	CAD-C2D-C1D	3.13	130.12	124.66
3	B	1160	OBV	CHD-C1D-ND	-3.12	120.53	124.38
3	B	1160	OBV	CAD-C2D-C1D	3.01	129.91	124.66
3	C	1163	OBV	C1D-ND-C4D	-2.98	101.99	105.07
3	C	1163	OBV	CDA-C2A-C3A	2.97	116.34	108.39
3	B	1160	OBV	C3B-C4B-NB	-2.87	104.83	111.01
3	C	1163	OBV	C1C-CHC-C4B	-2.81	124.54	130.12
3	B	1160	OBV	CBC-CAC-C3C	2.70	117.47	112.49
3	C	1163	OBV	CHA-C1A-NA	2.70	128.16	124.20
3	B	1160	OBV	C2D-C1D-ND	2.70	113.17	110.17
3	B	1160	OBV	CHA-C4D-C3D	-2.67	120.80	124.98
3	B	1160	OBV	CDD-C3D-C4D	2.65	129.07	125.04
3	B	1160	OBV	CMA-C2A-CDA	-2.62	106.46	110.77
3	B	1160	OBV	C2B-C1B-NB	-2.60	106.27	111.63
3	B	1160	OBV	CMB-C2B-CDB	-2.59	106.51	110.77
3	B	1160	OBV	CMB-C2B-C3B	-2.58	107.31	112.08
3	C	1163	OBV	CMA-C2A-C3A	-2.18	108.05	112.08
3	C	1163	OBV	CDC-C2C-C3C	2.11	128.92	124.94
3	C	1163	OBV	CMB-C2B-C3B	-2.10	108.20	112.08
3	C	1163	OBV	CAA-CBA-CCA	-2.02	109.25	113.59

There are no chirality outliers.

All (23) torsion outliers are listed below:

Mol	Chain	Res	Type	Atoms
3	B	1160	OBV	C4C-C3C-CAC-CBC
3	B	1160	OBV	C2C-C3C-CAC-CBC
3	B	1160	OBV	C2D-CAD-CBD-CCD
3	B	1160	OBV	C2B-C3B-CAB-CBB

*Continued on next page...*

*Continued from previous page...*

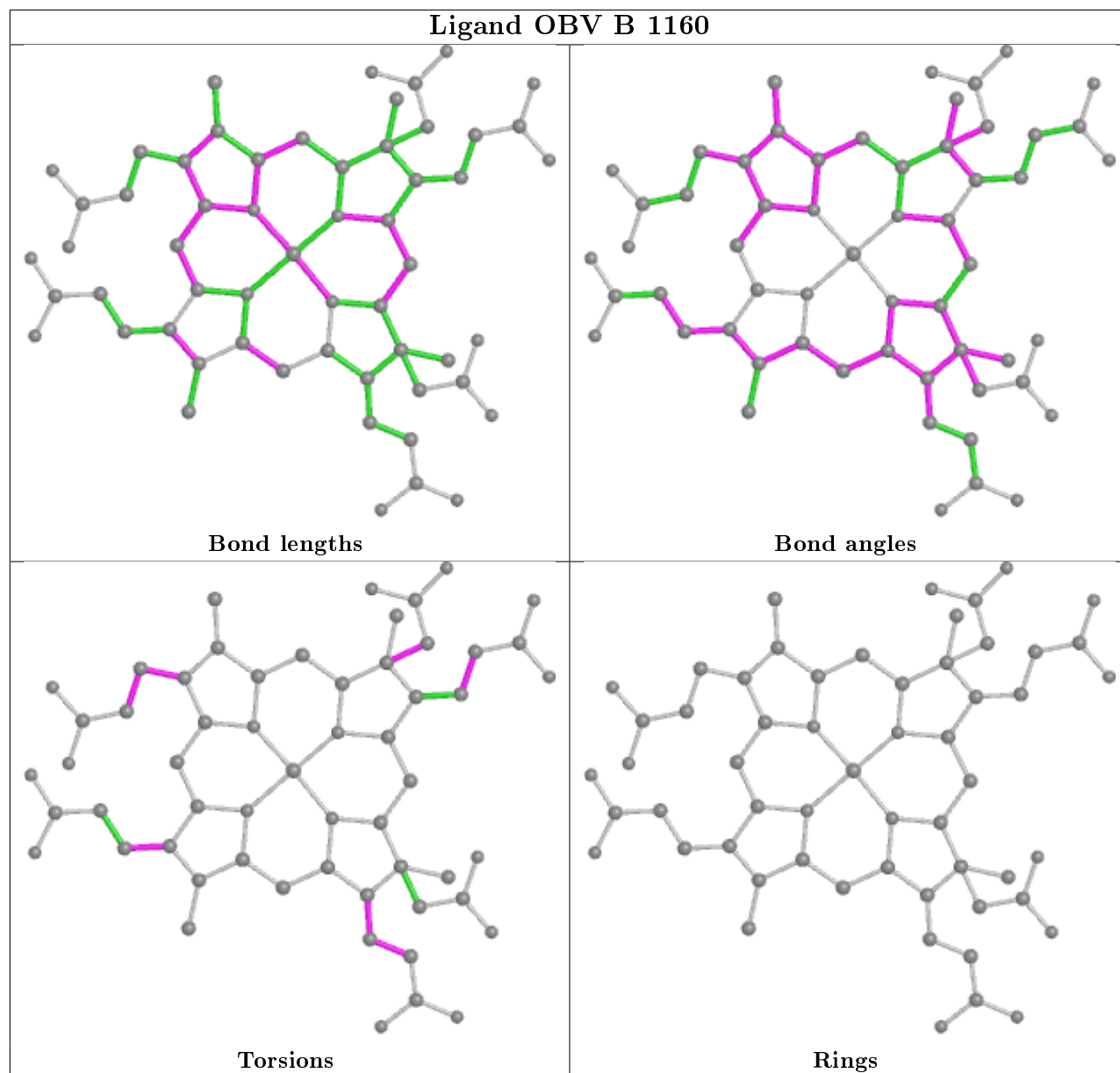
Mol	Chain	Res	Type	Atoms
3	B	1160	OBV	C1A-C2A-CDA-CEA
3	B	1160	OBV	CMA-C2A-CDA-CEA
3	B	1160	OBV	C3A-C2A-CDA-CEA
3	B	1160	OBV	C3A-CAA-CBA-CCA
3	C	1163	OBV	C4C-C3C-CAC-CBC
3	C	1163	OBV	C2C-C3C-CAC-CBC
3	C	1163	OBV	C2B-C3B-CAB-CBB
3	C	1163	OBV	C1A-C2A-CDA-CEA
3	C	1163	OBV	CMA-C2A-CDA-CEA
3	C	1163	OBV	C3A-C2A-CDA-CEA
3	B	1160	OBV	C3D-C2D-CAD-CBD
3	C	1163	OBV	C3A-CAA-CBA-CCA
3	C	1163	OBV	C4B-C3B-CAB-CBB
3	B	1160	OBV	C1D-C2D-CAD-CBD
3	C	1163	OBV	C1D-C2D-CAD-CBD
3	C	1163	OBV	C3B-CAB-CBB-CCB
3	C	1163	OBV	C3D-C2D-CAD-CBD
3	B	1160	OBV	C3B-CAB-CBB-CCB
3	C	1163	OBV	CMB-C2B-CDB-CEB

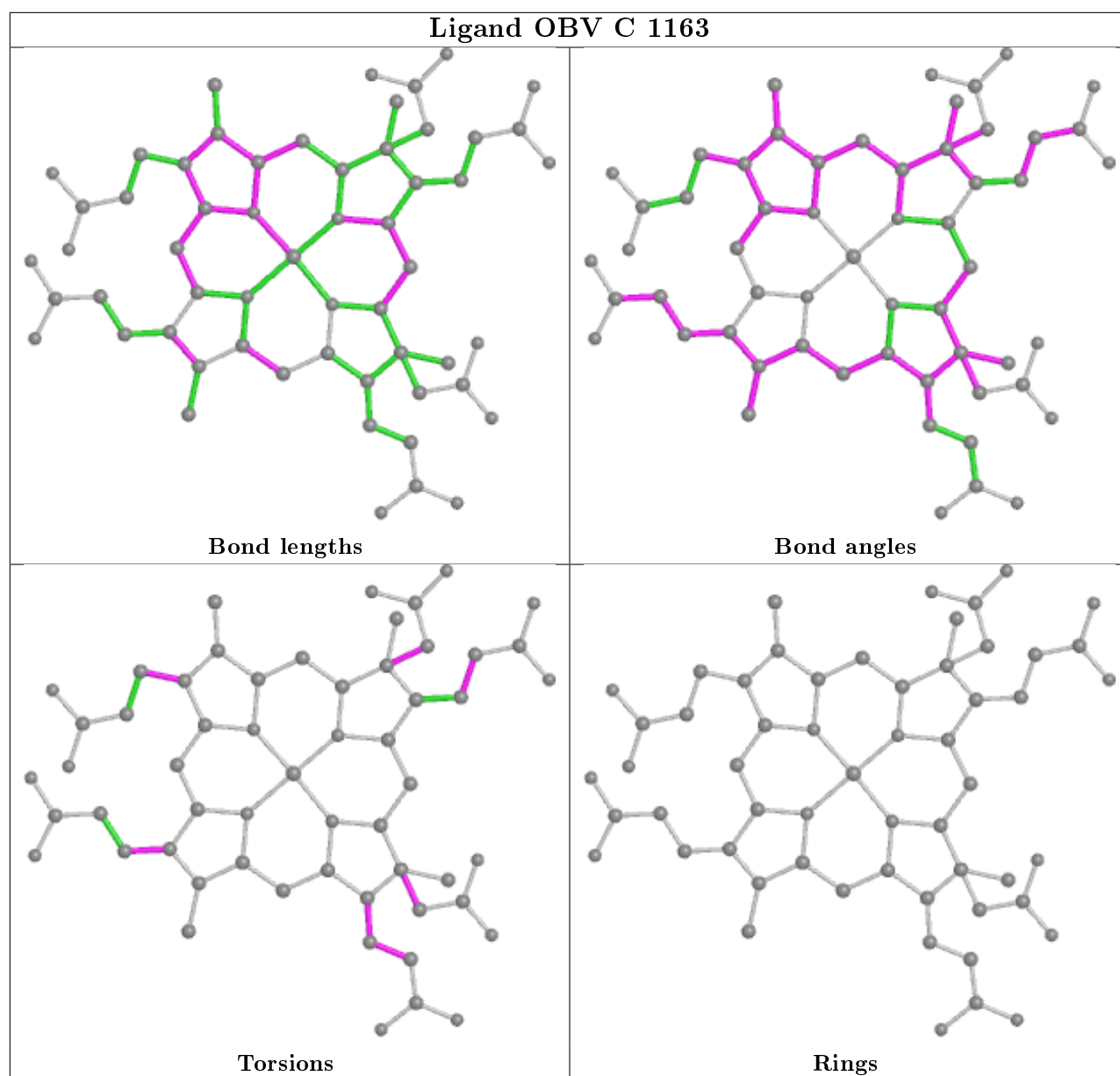
There are no ring outliers.

2 monomers are involved in 15 short contacts:

Mol	Chain	Res	Type	Clashes	Symm-Clashes
3	B	1160	OBV	9	0
3	C	1163	OBV	6	0

The following is a two-dimensional graphical depiction of Mogul quality analysis of bond lengths, bond angles, torsion angles, and ring geometry for all instances of the Ligand of Interest. In addition, ligands with molecular weight > 250 and outliers as shown on the validation Tables will also be included. For torsion angles, if less than 5% of the Mogul distribution of torsion angles is within 10 degrees of the torsion angle in question, then that torsion angle is considered an outlier. Any bond that is central to one or more torsion angles identified as an outlier by Mogul will be highlighted in the graph. For rings, the root-mean-square deviation (RMSD) between the ring in question and similar rings identified by Mogul is calculated over all ring torsion angles. If the average RMSD is greater than 60 degrees and the minimal RMSD between the ring in question and any Mogul-identified rings is also greater than 60 degrees, then that ring is considered an outlier. The outliers are highlighted in purple. The color gray indicates Mogul did not find sufficient equivalents in the CSD to analyse the geometry.





## 5.7 Other polymers [i](#)

There are no such residues in this entry.

## 5.8 Polymer linkage issues [i](#)

There are no chain breaks in this entry.

## 6 Fit of model and data ⓘ

### 6.1 Protein, DNA and RNA chains ⓘ

In the following table, the column labelled ‘#RSRZ> 2’ contains the number (and percentage) of RSRZ outliers, followed by percent RSRZ outliers for the chain as percentile scores relative to all X-ray entries and entries of similar resolution. The OWAB column contains the minimum, median, 95<sup>th</sup> percentile and maximum values of the occupancy-weighted average B-factor per residue. The column labelled ‘Q< 0.9’ lists the number of (and percentage) of residues with an average occupancy less than 0.9.

Mol	Chain	Analysed	<RSRZ>	#RSRZ>2	OWAB(Å <sup>2</sup> )	Q<0.9
1	A	145/173 (83%)	0.19	7 (4%) 30 32	23, 35, 55, 107	0
1	C	139/173 (80%)	0.08	2 (1%) 75 77	22, 35, 53, 63	0
2	B	159/179 (88%)	0.76	22 (13%) 2 3	23, 39, 93, 150	0
2	D	157/179 (87%)	0.26	8 (5%) 28 30	23, 34, 69, 115	0
All	All	600/704 (85%)	0.34	39 (6%) 18 20	22, 36, 67, 150	0

All (39) RSRZ outliers are listed below:

Mol	Chain	Res	Type	RSRZ
2	B	68	TRP	14.2
1	A	163	ILE	11.4
2	B	67	GLY	10.2
2	B	66	THR	8.1
1	A	164	ARG	6.8
2	B	63	HIS	6.0
2	B	65	LYS	6.0
2	B	64	GLN	4.9
2	D	3	HIS	4.7
2	B	72	ALA	4.3
2	D	65	LYS	4.2
2	B	71	ASN	4.1
2	D	63	HIS	3.9
2	D	64	GLN	3.5
2	B	69	THR	3.4
1	A	165	VAL	3.4
2	D	66	THR	3.3
2	B	70	HIS	3.2
2	B	120	ARG	3.0
1	A	162	LYS	3.0
2	B	95	HIS	2.9

*Continued on next page...*

*Continued from previous page...*

Mol	Chain	Res	Type	RSRZ
2	B	118	HIS	2.8
2	D	68	TRP	2.8
2	B	98	HIS	2.8
2	D	62	LYS	2.8
2	B	119	GLY	2.8
2	B	116	MET	2.8
2	B	125	CYS	2.7
1	C	160	LEU	2.7
2	B	121	SER	2.5
2	D	69	THR	2.4
2	B	122	GLU	2.4
1	A	161	PHE	2.3
1	A	73	ARG	2.3
1	A	166	ASP	2.3
2	B	94	SER	2.1
1	C	73	ARG	2.1
2	B	96	ILE	2.0
2	B	131	ASP	2.0

## 6.2 Non-standard residues in protein, DNA, RNA chains ⓘ

There are no non-standard protein/DNA/RNA residues in this entry.

## 6.3 Carbohydrates ⓘ

There are no carbohydrates in this entry.

## 6.4 Ligands ⓘ

In the following table, the Atoms column lists the number of modelled atoms in the group and the number defined in the chemical component dictionary. The B-factors column lists the minimum, median, 95<sup>th</sup> percentile and maximum values of B factors of atoms in the group. The column labelled 'Q< 0.9' lists the number of atoms with occupancy less than 0.9.

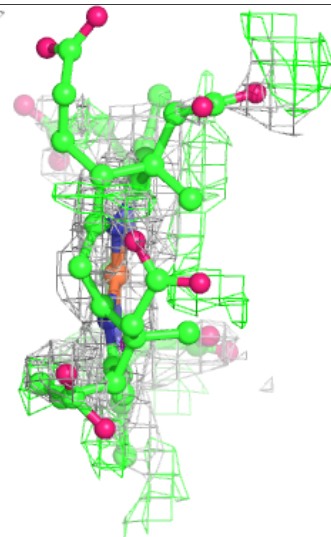
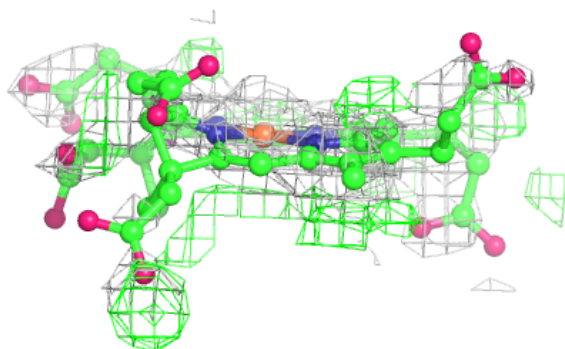
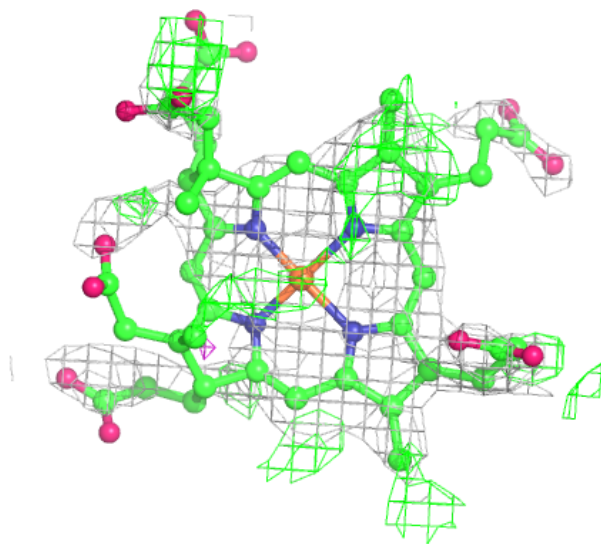
Mol	Type	Chain	Res	Atoms	RSCC	RSR	B-factors( $\text{\AA}^2$ )	Q<0.9
3	OBV	B	1160	57/57	0.79	0.36	41,56,71,77	57
3	OBV	C	1163	57/57	0.79	0.29	30,50,74,88	57

The following is a graphical depiction of the model fit to experimental electron density of all instances of the Ligand of Interest. In addition, ligands with molecular weight > 250 and outliers

as shown on the geometry validation Tables will also be included. Each fit is shown from different orientation to approximate a three-dimensional view.

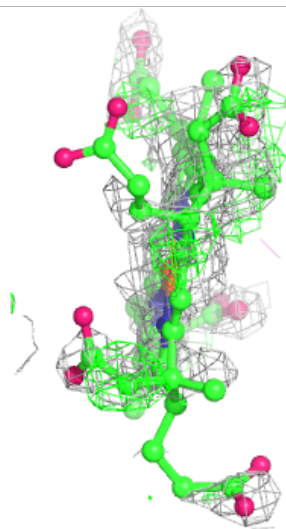
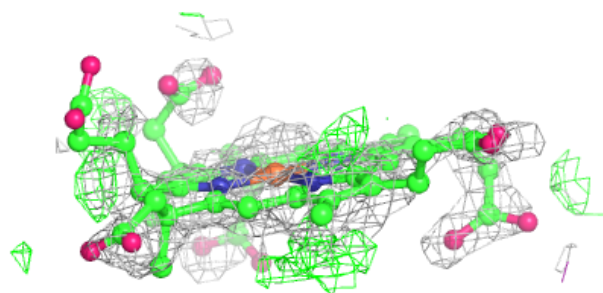
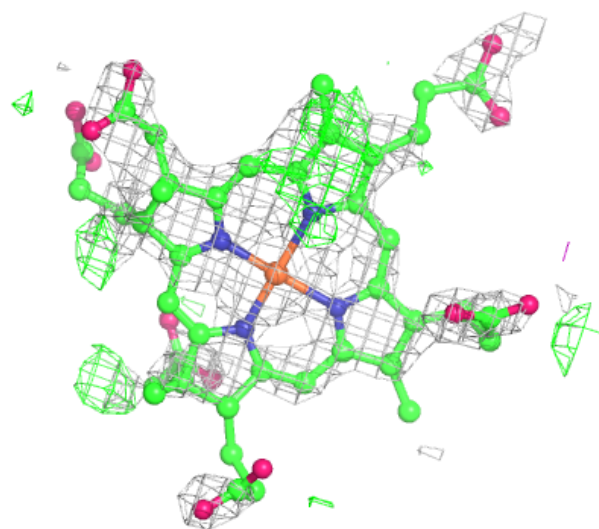
**Electron density around OBV B 1160:**

$2mF_o-DF_c$  (at 0.7 rmsd) in gray  
 $mF_o-DF_c$  (at 3 rmsd) in purple (negative)  
and green (positive)



**Electron density around OBV C 1163:**

$2mF_o-DF_c$  (at 0.7 rmsd) in gray  
 $mF_o-DF_c$  (at 3 rmsd) in purple (negative)  
and green (positive)



## 6.5 Other polymers ⓘ

There are no such residues in this entry.