



Full wwPDB EM Validation Report ⓘ

Nov 23, 2022 – 02:04 PM EST

PDB ID : 7UN9
EMDB ID : EMD-26617
Title : SfSTING with c-di-GMP double fiber
Authors : Morehouse, B.R.; Yip, M.C.J.; Keszei, A.F.A.; McNamara-Bordewick, N.K.;
Shao, S.; Kranzusch, P.J.
Deposited on : 2022-04-09
Resolution : 3.30 Å(reported)

This is a Full wwPDB EM Validation Report for a publicly released PDB entry.

We welcome your comments at validation@mail.wwpdb.org

A user guide is available at

<https://www.wwpdb.org/validation/2017/EMValidationReportHelp>
with specific help available everywhere you see the ⓘ symbol.

The types of validation reports are described at

<http://www.wwpdb.org/validation/2017/FAQs#types>.

The following versions of software and data (see [references ⓘ](#)) were used in the production of this report:

EMDB validation analysis : 0.0.1.dev43
Mogul : 1.8.5 (274361), CSD as541be (2020)
MolProbity : 4.02b-467
buster-report : 1.1.7 (2018)
Percentile statistics : 20191225.v01 (using entries in the PDB archive December 25th 2019)
MapQ : 1.9.9
Ideal geometry (proteins) : Engh & Huber (2001)
Ideal geometry (DNA, RNA) : Parkinson et al. (1996)
Validation Pipeline (wwPDB-VP) : 2.31.2

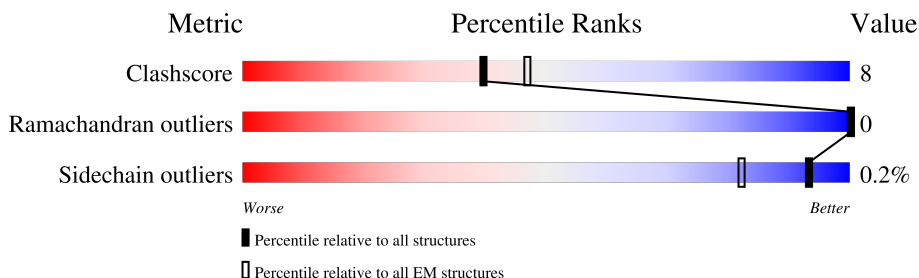
1 Overall quality at a glance

The following experimental techniques were used to determine the structure:

ELECTRON MICROSCOPY

The reported resolution of this entry is 3.30 Å.

Percentile scores (ranging between 0-100) for global validation metrics of the entry are shown in the following graphic. The table shows the number of entries on which the scores are based.



Metric	Whole archive (#Entries)	EM structures (#Entries)
Clashscore	158937	4297
Ramachandran outliers	154571	4023
Sidechain outliers	154315	3826

The table below summarises the geometric issues observed across the polymeric chains and their fit to the map. The red, orange, yellow and green segments of the bar indicate the fraction of residues that contain outliers for ≥ 3 , 2, 1 and 0 types of geometric quality criteria respectively. A grey segment represents the fraction of residues that are not modelled. The numeric value for each fraction is indicated below the corresponding segment, with a dot representing fractions $\leq 5\%$. The upper red bar (where present) indicates the fraction of residues that have poor fit to the EM map (all-atom inclusion $< 40\%$). The numeric value is given above the bar.

Mol	Chain	Length	Quality of chain
1	A	321	
1	B	321	
1	C	321	
1	D	321	
1	E	321	
1	F	321	
1	G	321	
1	H	321	

Continued on next page...

Continued from previous page...

Mol	Chain	Length	Quality of chain
1	I	321	<div><div><div></div><div></div><div></div></div><div><div></div><div></div><div></div></div><div>45%9%46%</div></div>
1	J	321	<div><div><div></div><div></div><div></div></div><div><div></div><div></div><div></div></div><div>46%9%45%</div></div>
1	K	321	<div><div><div></div><div></div><div></div></div><div><div></div><div></div><div></div></div><div>39%15%46%</div></div>
1	L	321	<div><div><div></div><div></div><div></div></div><div><div></div><div></div><div></div></div><div>45%10%45%</div></div>

2 Entry composition

There are 2 unique types of molecules in this entry. The entry contains 17675 atoms, of which 0 are hydrogens and 0 are deuteriums.

In the tables below, the AltConf column contains the number of residues with at least one atom in alternate conformation and the Trace column contains the number of residues modelled with at most 2 atoms.

- Molecule 1 is a protein called CD-NTase-associated protein 12.

Mol	Chain	Residues	Atoms					AltConf	Trace
1	A	171	Total	C	N	O	S	0	0
			1345	859	222	258	6		
1	B	177	Total	C	N	O	S	0	0
			1388	888	229	265	6		
1	G	241	Total	C	N	O	S	0	0
			1740	1102	297	335	6		
1	H	261	Total	C	N	O	S	0	0
			1980	1266	333	374	7		
1	C	171	Total	C	N	O	S	0	0
			1345	859	222	258	6		
1	D	177	Total	C	N	O	S	0	0
			1388	888	229	265	6		
1	I	172	Total	C	N	O	S	0	0
			1352	864	223	259	6		
1	J	177	Total	C	N	O	S	0	0
			1388	888	229	265	6		
1	E	171	Total	C	N	O	S	0	0
			1345	859	222	258	6		
1	F	177	Total	C	N	O	S	0	0
			1388	888	229	265	6		
1	K	172	Total	C	N	O	S	0	0
			1352	864	223	259	6		
1	L	177	Total	C	N	O	S	0	0
			1388	888	229	265	6		

There are 660 discrepancies between the modelled and reference sequences:

Chain	Residue	Modelled	Actual	Comment	Reference
A	3	UNK	-	see _pdbx_entry_details.sequence_details	UNP A0A2T5Y40
A	4	UNK	-	see _pdbx_entry_details.sequence_details	UNP A0A2T5Y40
A	5	UNK	-	see _pdbx_entry_details.sequence_details	UNP A0A2T5Y40
A	6	UNK	-	see _pdbx_entry_details.sequence_details	UNP A0A2T5Y40
A	7	UNK	-	see _pdbx_entry_details.sequence_details	UNP A0A2T5Y40
A	8	UNK	-	see _pdbx_entry_details.sequence_details	UNP A0A2T5Y40

Continued on next page

Continued from previous page...

Chain	Residue	Modelled	Actual	Comment	Reference
A	9	UNK	-	see _pdbx_entry_details.sequence_details	UNP A0A2T5Y40
A	10	UNK	-	see _pdbx_entry_details.sequence_details	UNP A0A2T5Y40
A	11	UNK	-	see _pdbx_entry_details.sequence_details	UNP A0A2T5Y40
A	12	UNK	-	see _pdbx_entry_details.sequence_details	UNP A0A2T5Y40
A	13	UNK	-	see _pdbx_entry_details.sequence_details	UNP A0A2T5Y40
A	14	UNK	-	see _pdbx_entry_details.sequence_details	UNP A0A2T5Y40
A	15	UNK	-	see _pdbx_entry_details.sequence_details	UNP A0A2T5Y40
A	16	UNK	-	see _pdbx_entry_details.sequence_details	UNP A0A2T5Y40
A	17	UNK	-	see _pdbx_entry_details.sequence_details	UNP A0A2T5Y40
A	18	UNK	-	see _pdbx_entry_details.sequence_details	UNP A0A2T5Y40
A	19	UNK	-	see _pdbx_entry_details.sequence_details	UNP A0A2T5Y40
A	20	UNK	-	see _pdbx_entry_details.sequence_details	UNP A0A2T5Y40
A	21	UNK	-	see _pdbx_entry_details.sequence_details	UNP A0A2T5Y40
A	22	UNK	-	see _pdbx_entry_details.sequence_details	UNP A0A2T5Y40
A	23	UNK	-	see _pdbx_entry_details.sequence_details	UNP A0A2T5Y40
A	24	UNK	-	see _pdbx_entry_details.sequence_details	UNP A0A2T5Y40
A	25	UNK	-	see _pdbx_entry_details.sequence_details	UNP A0A2T5Y40
A	26	UNK	-	see _pdbx_entry_details.sequence_details	UNP A0A2T5Y40
A	27	UNK	-	see _pdbx_entry_details.sequence_details	UNP A0A2T5Y40
A	28	UNK	-	see _pdbx_entry_details.sequence_details	UNP A0A2T5Y40
A	29	UNK	-	see _pdbx_entry_details.sequence_details	UNP A0A2T5Y40
A	30	UNK	-	see _pdbx_entry_details.sequence_details	UNP A0A2T5Y40
A	31	UNK	-	see _pdbx_entry_details.sequence_details	UNP A0A2T5Y40
A	32	UNK	-	see _pdbx_entry_details.sequence_details	UNP A0A2T5Y40
A	33	UNK	-	see _pdbx_entry_details.sequence_details	UNP A0A2T5Y40
A	34	UNK	-	see _pdbx_entry_details.sequence_details	UNP A0A2T5Y40
A	35	UNK	-	see _pdbx_entry_details.sequence_details	UNP A0A2T5Y40
A	36	UNK	-	see _pdbx_entry_details.sequence_details	UNP A0A2T5Y40
A	37	UNK	-	see _pdbx_entry_details.sequence_details	UNP A0A2T5Y40
A	38	UNK	-	see _pdbx_entry_details.sequence_details	UNP A0A2T5Y40
A	84	UNK	-	see _pdbx_entry_details.sequence_details	UNP A0A2T5Y40
A	85	UNK	-	see _pdbx_entry_details.sequence_details	UNP A0A2T5Y40
A	86	UNK	-	see _pdbx_entry_details.sequence_details	UNP A0A2T5Y40
A	87	UNK	-	see _pdbx_entry_details.sequence_details	UNP A0A2T5Y40
A	88	UNK	-	see _pdbx_entry_details.sequence_details	UNP A0A2T5Y40
A	89	UNK	-	see _pdbx_entry_details.sequence_details	UNP A0A2T5Y40
A	90	UNK	-	see _pdbx_entry_details.sequence_details	UNP A0A2T5Y40
A	91	UNK	-	see _pdbx_entry_details.sequence_details	UNP A0A2T5Y40
A	92	UNK	-	see _pdbx_entry_details.sequence_details	UNP A0A2T5Y40
A	93	UNK	-	see _pdbx_entry_details.sequence_details	UNP A0A2T5Y40
A	94	UNK	-	see _pdbx_entry_details.sequence_details	UNP A0A2T5Y40
A	95	UNK	-	see _pdbx_entry_details.sequence_details	UNP A0A2T5Y40

Continued on next page

Continued from previous page...

Chain	Residue	Modelled	Actual	Comment	Reference
A	96	UNK	-	see _pdbx_entry_details.sequence_details	UNP A0A2T5Y40
A	97	UNK	-	see _pdbx_entry_details.sequence_details	UNP A0A2T5Y40
A	98	UNK	-	see _pdbx_entry_details.sequence_details	UNP A0A2T5Y40
A	99	UNK	-	see _pdbx_entry_details.sequence_details	UNP A0A2T5Y40
A	100	UNK	-	see _pdbx_entry_details.sequence_details	UNP A0A2T5Y40
A	101	UNK	-	see _pdbx_entry_details.sequence_details	UNP A0A2T5Y40
A	102	UNK	-	see _pdbx_entry_details.sequence_details	UNP A0A2T5Y40
B	3	UNK	-	see _pdbx_entry_details.sequence_details	UNP A0A2T5Y40
B	4	UNK	-	see _pdbx_entry_details.sequence_details	UNP A0A2T5Y40
B	5	UNK	-	see _pdbx_entry_details.sequence_details	UNP A0A2T5Y40
B	6	UNK	-	see _pdbx_entry_details.sequence_details	UNP A0A2T5Y40
B	7	UNK	-	see _pdbx_entry_details.sequence_details	UNP A0A2T5Y40
B	8	UNK	-	see _pdbx_entry_details.sequence_details	UNP A0A2T5Y40
B	9	UNK	-	see _pdbx_entry_details.sequence_details	UNP A0A2T5Y40
B	10	UNK	-	see _pdbx_entry_details.sequence_details	UNP A0A2T5Y40
B	11	UNK	-	see _pdbx_entry_details.sequence_details	UNP A0A2T5Y40
B	12	UNK	-	see _pdbx_entry_details.sequence_details	UNP A0A2T5Y40
B	13	UNK	-	see _pdbx_entry_details.sequence_details	UNP A0A2T5Y40
B	14	UNK	-	see _pdbx_entry_details.sequence_details	UNP A0A2T5Y40
B	15	UNK	-	see _pdbx_entry_details.sequence_details	UNP A0A2T5Y40
B	16	UNK	-	see _pdbx_entry_details.sequence_details	UNP A0A2T5Y40
B	17	UNK	-	see _pdbx_entry_details.sequence_details	UNP A0A2T5Y40
B	18	UNK	-	see _pdbx_entry_details.sequence_details	UNP A0A2T5Y40
B	19	UNK	-	see _pdbx_entry_details.sequence_details	UNP A0A2T5Y40
B	20	UNK	-	see _pdbx_entry_details.sequence_details	UNP A0A2T5Y40
B	21	UNK	-	see _pdbx_entry_details.sequence_details	UNP A0A2T5Y40
B	22	UNK	-	see _pdbx_entry_details.sequence_details	UNP A0A2T5Y40
B	23	UNK	-	see _pdbx_entry_details.sequence_details	UNP A0A2T5Y40
B	24	UNK	-	see _pdbx_entry_details.sequence_details	UNP A0A2T5Y40
B	25	UNK	-	see _pdbx_entry_details.sequence_details	UNP A0A2T5Y40
B	26	UNK	-	see _pdbx_entry_details.sequence_details	UNP A0A2T5Y40
B	27	UNK	-	see _pdbx_entry_details.sequence_details	UNP A0A2T5Y40
B	28	UNK	-	see _pdbx_entry_details.sequence_details	UNP A0A2T5Y40
B	29	UNK	-	see _pdbx_entry_details.sequence_details	UNP A0A2T5Y40
B	30	UNK	-	see _pdbx_entry_details.sequence_details	UNP A0A2T5Y40
B	31	UNK	-	see _pdbx_entry_details.sequence_details	UNP A0A2T5Y40
B	32	UNK	-	see _pdbx_entry_details.sequence_details	UNP A0A2T5Y40
B	33	UNK	-	see _pdbx_entry_details.sequence_details	UNP A0A2T5Y40
B	34	UNK	-	see _pdbx_entry_details.sequence_details	UNP A0A2T5Y40
B	35	UNK	-	see _pdbx_entry_details.sequence_details	UNP A0A2T5Y40
B	36	UNK	-	see _pdbx_entry_details.sequence_details	UNP A0A2T5Y40
B	37	UNK	-	see _pdbx_entry_details.sequence_details	UNP A0A2T5Y40

Continued on next page

Continued from previous page...

Chain	Residue	Modelled	Actual	Comment	Reference
B	38	UNK	-	see _pdbx_entry_details.sequence_details	UNP A0A2T5Y40
B	84	UNK	-	see _pdbx_entry_details.sequence_details	UNP A0A2T5Y40
B	85	UNK	-	see _pdbx_entry_details.sequence_details	UNP A0A2T5Y40
B	86	UNK	-	see _pdbx_entry_details.sequence_details	UNP A0A2T5Y40
B	87	UNK	-	see _pdbx_entry_details.sequence_details	UNP A0A2T5Y40
B	88	UNK	-	see _pdbx_entry_details.sequence_details	UNP A0A2T5Y40
B	89	UNK	-	see _pdbx_entry_details.sequence_details	UNP A0A2T5Y40
B	90	UNK	-	see _pdbx_entry_details.sequence_details	UNP A0A2T5Y40
B	91	UNK	-	see _pdbx_entry_details.sequence_details	UNP A0A2T5Y40
B	92	UNK	-	see _pdbx_entry_details.sequence_details	UNP A0A2T5Y40
B	93	UNK	-	see _pdbx_entry_details.sequence_details	UNP A0A2T5Y40
B	94	UNK	-	see _pdbx_entry_details.sequence_details	UNP A0A2T5Y40
B	95	UNK	-	see _pdbx_entry_details.sequence_details	UNP A0A2T5Y40
B	96	UNK	-	see _pdbx_entry_details.sequence_details	UNP A0A2T5Y40
B	97	UNK	-	see _pdbx_entry_details.sequence_details	UNP A0A2T5Y40
B	98	UNK	-	see _pdbx_entry_details.sequence_details	UNP A0A2T5Y40
B	99	UNK	-	see _pdbx_entry_details.sequence_details	UNP A0A2T5Y40
B	100	UNK	-	see _pdbx_entry_details.sequence_details	UNP A0A2T5Y40
B	101	UNK	-	see _pdbx_entry_details.sequence_details	UNP A0A2T5Y40
B	102	UNK	-	see _pdbx_entry_details.sequence_details	UNP A0A2T5Y40
G	7	UNK	-	see _pdbx_entry_details.sequence_details	UNP A0A2T5Y40
G	8	UNK	-	see _pdbx_entry_details.sequence_details	UNP A0A2T5Y40
G	9	UNK	-	see _pdbx_entry_details.sequence_details	UNP A0A2T5Y40
G	13	UNK	-	see _pdbx_entry_details.sequence_details	UNP A0A2T5Y40
G	14	UNK	-	see _pdbx_entry_details.sequence_details	UNP A0A2T5Y40
G	15	UNK	-	see _pdbx_entry_details.sequence_details	UNP A0A2T5Y40
G	16	UNK	-	see _pdbx_entry_details.sequence_details	UNP A0A2T5Y40
G	17	UNK	-	see _pdbx_entry_details.sequence_details	UNP A0A2T5Y40
G	18	UNK	-	see _pdbx_entry_details.sequence_details	UNP A0A2T5Y40
G	19	UNK	-	see _pdbx_entry_details.sequence_details	UNP A0A2T5Y40
G	20	UNK	-	see _pdbx_entry_details.sequence_details	UNP A0A2T5Y40
G	21	UNK	-	see _pdbx_entry_details.sequence_details	UNP A0A2T5Y40
G	22	UNK	-	see _pdbx_entry_details.sequence_details	UNP A0A2T5Y40
G	23	UNK	-	see _pdbx_entry_details.sequence_details	UNP A0A2T5Y40
G	28	UNK	-	see _pdbx_entry_details.sequence_details	UNP A0A2T5Y40
G	29	UNK	-	see _pdbx_entry_details.sequence_details	UNP A0A2T5Y40
G	30	UNK	-	see _pdbx_entry_details.sequence_details	UNP A0A2T5Y40
G	31	UNK	-	see _pdbx_entry_details.sequence_details	UNP A0A2T5Y40
G	32	UNK	-	see _pdbx_entry_details.sequence_details	UNP A0A2T5Y40
G	33	UNK	-	see _pdbx_entry_details.sequence_details	UNP A0A2T5Y40
G	44	UNK	-	see _pdbx_entry_details.sequence_details	UNP A0A2T5Y40
G	45	UNK	-	see _pdbx_entry_details.sequence_details	UNP A0A2T5Y40

Continued on next page

Continued from previous page...

Chain	Residue	Modelled	Actual	Comment	Reference
G	46	UNK	-	see _pdbx_entry_details.sequence_details	UNP A0A2T5Y40
G	47	UNK	-	see _pdbx_entry_details.sequence_details	UNP A0A2T5Y40
G	48	UNK	-	see _pdbx_entry_details.sequence_details	UNP A0A2T5Y40
G	49	UNK	-	see _pdbx_entry_details.sequence_details	UNP A0A2T5Y40
G	50	UNK	-	see _pdbx_entry_details.sequence_details	UNP A0A2T5Y40
G	51	UNK	-	see _pdbx_entry_details.sequence_details	UNP A0A2T5Y40
G	52	UNK	-	see _pdbx_entry_details.sequence_details	UNP A0A2T5Y40
G	53	UNK	-	see _pdbx_entry_details.sequence_details	UNP A0A2T5Y40
G	56	UNK	-	see _pdbx_entry_details.sequence_details	UNP A0A2T5Y40
G	57	UNK	-	see _pdbx_entry_details.sequence_details	UNP A0A2T5Y40
G	58	UNK	-	see _pdbx_entry_details.sequence_details	UNP A0A2T5Y40
G	59	UNK	-	see _pdbx_entry_details.sequence_details	UNP A0A2T5Y40
G	60	UNK	-	see _pdbx_entry_details.sequence_details	UNP A0A2T5Y40
G	61	UNK	-	see _pdbx_entry_details.sequence_details	UNP A0A2T5Y40
G	97	UNK	-	see _pdbx_entry_details.sequence_details	UNP A0A2T5Y40
G	98	UNK	-	see _pdbx_entry_details.sequence_details	UNP A0A2T5Y40
G	99	UNK	-	see _pdbx_entry_details.sequence_details	UNP A0A2T5Y40
G	100	UNK	-	see _pdbx_entry_details.sequence_details	UNP A0A2T5Y40
G	101	UNK	-	see _pdbx_entry_details.sequence_details	UNP A0A2T5Y40
G	102	UNK	-	see _pdbx_entry_details.sequence_details	UNP A0A2T5Y40
G	132	UNK	-	see _pdbx_entry_details.sequence_details	UNP A0A2T5Y40
G	133	UNK	-	see _pdbx_entry_details.sequence_details	UNP A0A2T5Y40
G	134	UNK	-	see _pdbx_entry_details.sequence_details	UNP A0A2T5Y40
G	135	UNK	-	see _pdbx_entry_details.sequence_details	UNP A0A2T5Y40
G	136	UNK	-	see _pdbx_entry_details.sequence_details	UNP A0A2T5Y40
G	137	UNK	-	see _pdbx_entry_details.sequence_details	UNP A0A2T5Y40
G	138	UNK	-	see _pdbx_entry_details.sequence_details	UNP A0A2T5Y40
G	139	UNK	-	see _pdbx_entry_details.sequence_details	UNP A0A2T5Y40
G	140	UNK	-	see _pdbx_entry_details.sequence_details	UNP A0A2T5Y40
G	141	UNK	-	see _pdbx_entry_details.sequence_details	UNP A0A2T5Y40
G	142	UNK	-	see _pdbx_entry_details.sequence_details	UNP A0A2T5Y40
G	143	UNK	-	see _pdbx_entry_details.sequence_details	UNP A0A2T5Y40
G	144	UNK	-	see _pdbx_entry_details.sequence_details	UNP A0A2T5Y40
H	-1	UNK	-	see _pdbx_entry_details.sequence_details	UNP A0A2T5Y40
H	0	UNK	-	see _pdbx_entry_details.sequence_details	UNP A0A2T5Y40
H	1	UNK	-	see _pdbx_entry_details.sequence_details	UNP A0A2T5Y40
H	2	UNK	-	see _pdbx_entry_details.sequence_details	UNP A0A2T5Y40
H	3	UNK	-	see _pdbx_entry_details.sequence_details	UNP A0A2T5Y40
H	4	UNK	-	see _pdbx_entry_details.sequence_details	UNP A0A2T5Y40
H	5	UNK	-	see _pdbx_entry_details.sequence_details	UNP A0A2T5Y40
H	6	UNK	-	see _pdbx_entry_details.sequence_details	UNP A0A2T5Y40
H	7	UNK	-	see _pdbx_entry_details.sequence_details	UNP A0A2T5Y40

Continued on next page

Continued from previous page...

Chain	Residue	Modelled	Actual	Comment	Reference
H	8	UNK	-	see _pdbx_entry_details.sequence_details	UNP A0A2T5Y40
H	9	UNK	-	see _pdbx_entry_details.sequence_details	UNP A0A2T5Y40
H	10	UNK	-	see _pdbx_entry_details.sequence_details	UNP A0A2T5Y40
H	14	UNK	-	see _pdbx_entry_details.sequence_details	UNP A0A2T5Y40
H	15	UNK	-	see _pdbx_entry_details.sequence_details	UNP A0A2T5Y40
H	16	UNK	-	see _pdbx_entry_details.sequence_details	UNP A0A2T5Y40
H	17	UNK	-	see _pdbx_entry_details.sequence_details	UNP A0A2T5Y40
H	18	UNK	-	see _pdbx_entry_details.sequence_details	UNP A0A2T5Y40
H	19	UNK	-	see _pdbx_entry_details.sequence_details	UNP A0A2T5Y40
H	20	UNK	-	see _pdbx_entry_details.sequence_details	UNP A0A2T5Y40
H	21	UNK	-	see _pdbx_entry_details.sequence_details	UNP A0A2T5Y40
H	22	UNK	-	see _pdbx_entry_details.sequence_details	UNP A0A2T5Y40
H	23	UNK	-	see _pdbx_entry_details.sequence_details	UNP A0A2T5Y40
H	28	UNK	-	see _pdbx_entry_details.sequence_details	UNP A0A2T5Y40
H	29	UNK	-	see _pdbx_entry_details.sequence_details	UNP A0A2T5Y40
H	30	UNK	-	see _pdbx_entry_details.sequence_details	UNP A0A2T5Y40
H	31	UNK	-	see _pdbx_entry_details.sequence_details	UNP A0A2T5Y40
H	32	UNK	-	see _pdbx_entry_details.sequence_details	UNP A0A2T5Y40
H	33	UNK	-	see _pdbx_entry_details.sequence_details	UNP A0A2T5Y40
H	44	UNK	-	see _pdbx_entry_details.sequence_details	UNP A0A2T5Y40
H	45	UNK	-	see _pdbx_entry_details.sequence_details	UNP A0A2T5Y40
H	46	UNK	-	see _pdbx_entry_details.sequence_details	UNP A0A2T5Y40
H	47	UNK	-	see _pdbx_entry_details.sequence_details	UNP A0A2T5Y40
H	48	UNK	-	see _pdbx_entry_details.sequence_details	UNP A0A2T5Y40
H	49	UNK	-	see _pdbx_entry_details.sequence_details	UNP A0A2T5Y40
H	50	UNK	-	see _pdbx_entry_details.sequence_details	UNP A0A2T5Y40
H	51	UNK	-	see _pdbx_entry_details.sequence_details	UNP A0A2T5Y40
H	102A	UNK	-	see _pdbx_entry_details.sequence_details	UNP A0A2T5Y40
H	102B	UNK	-	see _pdbx_entry_details.sequence_details	UNP A0A2T5Y40
H	102C	UNK	-	see _pdbx_entry_details.sequence_details	UNP A0A2T5Y40
H	102D	UNK	-	see _pdbx_entry_details.sequence_details	UNP A0A2T5Y40
H	102E	UNK	-	see _pdbx_entry_details.sequence_details	UNP A0A2T5Y40
H	102F	UNK	-	see _pdbx_entry_details.sequence_details	UNP A0A2T5Y40
H	102G	UNK	-	see _pdbx_entry_details.sequence_details	UNP A0A2T5Y40
H	102H	UNK	-	see _pdbx_entry_details.sequence_details	UNP A0A2T5Y40
H	102I	UNK	-	see _pdbx_entry_details.sequence_details	UNP A0A2T5Y40
H	102J	UNK	-	see _pdbx_entry_details.sequence_details	UNP A0A2T5Y40
H	102K	UNK	-	see _pdbx_entry_details.sequence_details	UNP A0A2T5Y40
H	102L	UNK	-	see _pdbx_entry_details.sequence_details	UNP A0A2T5Y40
H	102M	UNK	-	see _pdbx_entry_details.sequence_details	UNP A0A2T5Y40
H	102N	UNK	-	see _pdbx_entry_details.sequence_details	UNP A0A2T5Y40
H	102O	UNK	-	see _pdbx_entry_details.sequence_details	UNP A0A2T5Y40

Continued on next page

Continued from previous page...

Chain	Residue	Modelled	Actual	Comment	Reference
H	102P	UNK	-	see _pdbx_entry_details.sequence_details	UNP A0A2T5Y40
H	102Q	UNK	-	see _pdbx_entry_details.sequence_details	UNP A0A2T5Y40
H	102R	UNK	-	see _pdbx_entry_details.sequence_details	UNP A0A2T5Y40
H	102S	UNK	-	see _pdbx_entry_details.sequence_details	UNP A0A2T5Y40
C	3	UNK	-	see _pdbx_entry_details.sequence_details	UNP A0A2T5Y40
C	4	UNK	-	see _pdbx_entry_details.sequence_details	UNP A0A2T5Y40
C	5	UNK	-	see _pdbx_entry_details.sequence_details	UNP A0A2T5Y40
C	6	UNK	-	see _pdbx_entry_details.sequence_details	UNP A0A2T5Y40
C	7	UNK	-	see _pdbx_entry_details.sequence_details	UNP A0A2T5Y40
C	8	UNK	-	see _pdbx_entry_details.sequence_details	UNP A0A2T5Y40
C	9	UNK	-	see _pdbx_entry_details.sequence_details	UNP A0A2T5Y40
C	10	UNK	-	see _pdbx_entry_details.sequence_details	UNP A0A2T5Y40
C	11	UNK	-	see _pdbx_entry_details.sequence_details	UNP A0A2T5Y40
C	12	UNK	-	see _pdbx_entry_details.sequence_details	UNP A0A2T5Y40
C	13	UNK	-	see _pdbx_entry_details.sequence_details	UNP A0A2T5Y40
C	14	UNK	-	see _pdbx_entry_details.sequence_details	UNP A0A2T5Y40
C	15	UNK	-	see _pdbx_entry_details.sequence_details	UNP A0A2T5Y40
C	16	UNK	-	see _pdbx_entry_details.sequence_details	UNP A0A2T5Y40
C	17	UNK	-	see _pdbx_entry_details.sequence_details	UNP A0A2T5Y40
C	18	UNK	-	see _pdbx_entry_details.sequence_details	UNP A0A2T5Y40
C	19	UNK	-	see _pdbx_entry_details.sequence_details	UNP A0A2T5Y40
C	20	UNK	-	see _pdbx_entry_details.sequence_details	UNP A0A2T5Y40
C	21	UNK	-	see _pdbx_entry_details.sequence_details	UNP A0A2T5Y40
C	22	UNK	-	see _pdbx_entry_details.sequence_details	UNP A0A2T5Y40
C	23	UNK	-	see _pdbx_entry_details.sequence_details	UNP A0A2T5Y40
C	24	UNK	-	see _pdbx_entry_details.sequence_details	UNP A0A2T5Y40
C	25	UNK	-	see _pdbx_entry_details.sequence_details	UNP A0A2T5Y40
C	26	UNK	-	see _pdbx_entry_details.sequence_details	UNP A0A2T5Y40
C	27	UNK	-	see _pdbx_entry_details.sequence_details	UNP A0A2T5Y40
C	28	UNK	-	see _pdbx_entry_details.sequence_details	UNP A0A2T5Y40
C	29	UNK	-	see _pdbx_entry_details.sequence_details	UNP A0A2T5Y40
C	30	UNK	-	see _pdbx_entry_details.sequence_details	UNP A0A2T5Y40
C	31	UNK	-	see _pdbx_entry_details.sequence_details	UNP A0A2T5Y40
C	32	UNK	-	see _pdbx_entry_details.sequence_details	UNP A0A2T5Y40
C	33	UNK	-	see _pdbx_entry_details.sequence_details	UNP A0A2T5Y40
C	34	UNK	-	see _pdbx_entry_details.sequence_details	UNP A0A2T5Y40
C	35	UNK	-	see _pdbx_entry_details.sequence_details	UNP A0A2T5Y40
C	36	UNK	-	see _pdbx_entry_details.sequence_details	UNP A0A2T5Y40
C	37	UNK	-	see _pdbx_entry_details.sequence_details	UNP A0A2T5Y40
C	38	UNK	-	see _pdbx_entry_details.sequence_details	UNP A0A2T5Y40
C	84	UNK	-	see _pdbx_entry_details.sequence_details	UNP A0A2T5Y40
C	85	UNK	-	see _pdbx_entry_details.sequence_details	UNP A0A2T5Y40

Continued on next page

Continued from previous page...

Chain	Residue	Modelled	Actual	Comment	Reference
C	86	UNK	-	see _pdbx_entry_details.sequence_details	UNP A0A2T5Y40
C	87	UNK	-	see _pdbx_entry_details.sequence_details	UNP A0A2T5Y40
C	88	UNK	-	see _pdbx_entry_details.sequence_details	UNP A0A2T5Y40
C	89	UNK	-	see _pdbx_entry_details.sequence_details	UNP A0A2T5Y40
C	90	UNK	-	see _pdbx_entry_details.sequence_details	UNP A0A2T5Y40
C	91	UNK	-	see _pdbx_entry_details.sequence_details	UNP A0A2T5Y40
C	92	UNK	-	see _pdbx_entry_details.sequence_details	UNP A0A2T5Y40
C	93	UNK	-	see _pdbx_entry_details.sequence_details	UNP A0A2T5Y40
C	94	UNK	-	see _pdbx_entry_details.sequence_details	UNP A0A2T5Y40
C	95	UNK	-	see _pdbx_entry_details.sequence_details	UNP A0A2T5Y40
C	96	UNK	-	see _pdbx_entry_details.sequence_details	UNP A0A2T5Y40
C	97	UNK	-	see _pdbx_entry_details.sequence_details	UNP A0A2T5Y40
C	98	UNK	-	see _pdbx_entry_details.sequence_details	UNP A0A2T5Y40
C	99	UNK	-	see _pdbx_entry_details.sequence_details	UNP A0A2T5Y40
C	100	UNK	-	see _pdbx_entry_details.sequence_details	UNP A0A2T5Y40
C	101	UNK	-	see _pdbx_entry_details.sequence_details	UNP A0A2T5Y40
C	102	UNK	-	see _pdbx_entry_details.sequence_details	UNP A0A2T5Y40
D	3	UNK	-	see _pdbx_entry_details.sequence_details	UNP A0A2T5Y40
D	4	UNK	-	see _pdbx_entry_details.sequence_details	UNP A0A2T5Y40
D	5	UNK	-	see _pdbx_entry_details.sequence_details	UNP A0A2T5Y40
D	6	UNK	-	see _pdbx_entry_details.sequence_details	UNP A0A2T5Y40
D	7	UNK	-	see _pdbx_entry_details.sequence_details	UNP A0A2T5Y40
D	8	UNK	-	see _pdbx_entry_details.sequence_details	UNP A0A2T5Y40
D	9	UNK	-	see _pdbx_entry_details.sequence_details	UNP A0A2T5Y40
D	10	UNK	-	see _pdbx_entry_details.sequence_details	UNP A0A2T5Y40
D	11	UNK	-	see _pdbx_entry_details.sequence_details	UNP A0A2T5Y40
D	12	UNK	-	see _pdbx_entry_details.sequence_details	UNP A0A2T5Y40
D	13	UNK	-	see _pdbx_entry_details.sequence_details	UNP A0A2T5Y40
D	14	UNK	-	see _pdbx_entry_details.sequence_details	UNP A0A2T5Y40
D	15	UNK	-	see _pdbx_entry_details.sequence_details	UNP A0A2T5Y40
D	16	UNK	-	see _pdbx_entry_details.sequence_details	UNP A0A2T5Y40
D	17	UNK	-	see _pdbx_entry_details.sequence_details	UNP A0A2T5Y40
D	18	UNK	-	see _pdbx_entry_details.sequence_details	UNP A0A2T5Y40
D	19	UNK	-	see _pdbx_entry_details.sequence_details	UNP A0A2T5Y40
D	20	UNK	-	see _pdbx_entry_details.sequence_details	UNP A0A2T5Y40
D	21	UNK	-	see _pdbx_entry_details.sequence_details	UNP A0A2T5Y40
D	22	UNK	-	see _pdbx_entry_details.sequence_details	UNP A0A2T5Y40
D	23	UNK	-	see _pdbx_entry_details.sequence_details	UNP A0A2T5Y40
D	24	UNK	-	see _pdbx_entry_details.sequence_details	UNP A0A2T5Y40
D	25	UNK	-	see _pdbx_entry_details.sequence_details	UNP A0A2T5Y40
D	26	UNK	-	see _pdbx_entry_details.sequence_details	UNP A0A2T5Y40
D	27	UNK	-	see _pdbx_entry_details.sequence_details	UNP A0A2T5Y40

Continued on next page

Continued from previous page...

Chain	Residue	Modelled	Actual	Comment	Reference
D	28	UNK	-	see _pdbx_entry_details.sequence_details	UNP A0A2T5Y40
D	29	UNK	-	see _pdbx_entry_details.sequence_details	UNP A0A2T5Y40
D	30	UNK	-	see _pdbx_entry_details.sequence_details	UNP A0A2T5Y40
D	31	UNK	-	see _pdbx_entry_details.sequence_details	UNP A0A2T5Y40
D	32	UNK	-	see _pdbx_entry_details.sequence_details	UNP A0A2T5Y40
D	33	UNK	-	see _pdbx_entry_details.sequence_details	UNP A0A2T5Y40
D	34	UNK	-	see _pdbx_entry_details.sequence_details	UNP A0A2T5Y40
D	35	UNK	-	see _pdbx_entry_details.sequence_details	UNP A0A2T5Y40
D	36	UNK	-	see _pdbx_entry_details.sequence_details	UNP A0A2T5Y40
D	37	UNK	-	see _pdbx_entry_details.sequence_details	UNP A0A2T5Y40
D	38	UNK	-	see _pdbx_entry_details.sequence_details	UNP A0A2T5Y40
D	84	UNK	-	see _pdbx_entry_details.sequence_details	UNP A0A2T5Y40
D	85	UNK	-	see _pdbx_entry_details.sequence_details	UNP A0A2T5Y40
D	86	UNK	-	see _pdbx_entry_details.sequence_details	UNP A0A2T5Y40
D	87	UNK	-	see _pdbx_entry_details.sequence_details	UNP A0A2T5Y40
D	88	UNK	-	see _pdbx_entry_details.sequence_details	UNP A0A2T5Y40
D	89	UNK	-	see _pdbx_entry_details.sequence_details	UNP A0A2T5Y40
D	90	UNK	-	see _pdbx_entry_details.sequence_details	UNP A0A2T5Y40
D	91	UNK	-	see _pdbx_entry_details.sequence_details	UNP A0A2T5Y40
D	92	UNK	-	see _pdbx_entry_details.sequence_details	UNP A0A2T5Y40
D	93	UNK	-	see _pdbx_entry_details.sequence_details	UNP A0A2T5Y40
D	94	UNK	-	see _pdbx_entry_details.sequence_details	UNP A0A2T5Y40
D	95	UNK	-	see _pdbx_entry_details.sequence_details	UNP A0A2T5Y40
D	96	UNK	-	see _pdbx_entry_details.sequence_details	UNP A0A2T5Y40
D	97	UNK	-	see _pdbx_entry_details.sequence_details	UNP A0A2T5Y40
D	98	UNK	-	see _pdbx_entry_details.sequence_details	UNP A0A2T5Y40
D	99	UNK	-	see _pdbx_entry_details.sequence_details	UNP A0A2T5Y40
D	100	UNK	-	see _pdbx_entry_details.sequence_details	UNP A0A2T5Y40
D	101	UNK	-	see _pdbx_entry_details.sequence_details	UNP A0A2T5Y40
D	102	UNK	-	see _pdbx_entry_details.sequence_details	UNP A0A2T5Y40
I	3	UNK	-	see _pdbx_entry_details.sequence_details	UNP A0A2T5Y40
I	4	UNK	-	see _pdbx_entry_details.sequence_details	UNP A0A2T5Y40
I	5	UNK	-	see _pdbx_entry_details.sequence_details	UNP A0A2T5Y40
I	6	UNK	-	see _pdbx_entry_details.sequence_details	UNP A0A2T5Y40
I	7	UNK	-	see _pdbx_entry_details.sequence_details	UNP A0A2T5Y40
I	8	UNK	-	see _pdbx_entry_details.sequence_details	UNP A0A2T5Y40
I	9	UNK	-	see _pdbx_entry_details.sequence_details	UNP A0A2T5Y40
I	10	UNK	-	see _pdbx_entry_details.sequence_details	UNP A0A2T5Y40
I	11	UNK	-	see _pdbx_entry_details.sequence_details	UNP A0A2T5Y40
I	12	UNK	-	see _pdbx_entry_details.sequence_details	UNP A0A2T5Y40
I	13	UNK	-	see _pdbx_entry_details.sequence_details	UNP A0A2T5Y40
I	14	UNK	-	see _pdbx_entry_details.sequence_details	UNP A0A2T5Y40

Continued on next page

Continued from previous page...

Chain	Residue	Modelled	Actual	Comment	Reference
I	15	UNK	-	see _pdbx_entry_details.sequence_details	UNP A0A2T5Y40
I	16	UNK	-	see _pdbx_entry_details.sequence_details	UNP A0A2T5Y40
I	17	UNK	-	see _pdbx_entry_details.sequence_details	UNP A0A2T5Y40
I	18	UNK	-	see _pdbx_entry_details.sequence_details	UNP A0A2T5Y40
I	19	UNK	-	see _pdbx_entry_details.sequence_details	UNP A0A2T5Y40
I	20	UNK	-	see _pdbx_entry_details.sequence_details	UNP A0A2T5Y40
I	21	UNK	-	see _pdbx_entry_details.sequence_details	UNP A0A2T5Y40
I	22	UNK	-	see _pdbx_entry_details.sequence_details	UNP A0A2T5Y40
I	23	UNK	-	see _pdbx_entry_details.sequence_details	UNP A0A2T5Y40
I	24	UNK	-	see _pdbx_entry_details.sequence_details	UNP A0A2T5Y40
I	25	UNK	-	see _pdbx_entry_details.sequence_details	UNP A0A2T5Y40
I	26	UNK	-	see _pdbx_entry_details.sequence_details	UNP A0A2T5Y40
I	27	UNK	-	see _pdbx_entry_details.sequence_details	UNP A0A2T5Y40
I	28	UNK	-	see _pdbx_entry_details.sequence_details	UNP A0A2T5Y40
I	29	UNK	-	see _pdbx_entry_details.sequence_details	UNP A0A2T5Y40
I	30	UNK	-	see _pdbx_entry_details.sequence_details	UNP A0A2T5Y40
I	31	UNK	-	see _pdbx_entry_details.sequence_details	UNP A0A2T5Y40
I	32	UNK	-	see _pdbx_entry_details.sequence_details	UNP A0A2T5Y40
I	33	UNK	-	see _pdbx_entry_details.sequence_details	UNP A0A2T5Y40
I	34	UNK	-	see _pdbx_entry_details.sequence_details	UNP A0A2T5Y40
I	35	UNK	-	see _pdbx_entry_details.sequence_details	UNP A0A2T5Y40
I	36	UNK	-	see _pdbx_entry_details.sequence_details	UNP A0A2T5Y40
I	37	UNK	-	see _pdbx_entry_details.sequence_details	UNP A0A2T5Y40
I	38	UNK	-	see _pdbx_entry_details.sequence_details	UNP A0A2T5Y40
I	84	UNK	-	see _pdbx_entry_details.sequence_details	UNP A0A2T5Y40
I	85	UNK	-	see _pdbx_entry_details.sequence_details	UNP A0A2T5Y40
I	86	UNK	-	see _pdbx_entry_details.sequence_details	UNP A0A2T5Y40
I	87	UNK	-	see _pdbx_entry_details.sequence_details	UNP A0A2T5Y40
I	88	UNK	-	see _pdbx_entry_details.sequence_details	UNP A0A2T5Y40
I	89	UNK	-	see _pdbx_entry_details.sequence_details	UNP A0A2T5Y40
I	90	UNK	-	see _pdbx_entry_details.sequence_details	UNP A0A2T5Y40
I	91	UNK	-	see _pdbx_entry_details.sequence_details	UNP A0A2T5Y40
I	92	UNK	-	see _pdbx_entry_details.sequence_details	UNP A0A2T5Y40
I	93	UNK	-	see _pdbx_entry_details.sequence_details	UNP A0A2T5Y40
I	94	UNK	-	see _pdbx_entry_details.sequence_details	UNP A0A2T5Y40
I	95	UNK	-	see _pdbx_entry_details.sequence_details	UNP A0A2T5Y40
I	96	UNK	-	see _pdbx_entry_details.sequence_details	UNP A0A2T5Y40
I	97	UNK	-	see _pdbx_entry_details.sequence_details	UNP A0A2T5Y40
I	98	UNK	-	see _pdbx_entry_details.sequence_details	UNP A0A2T5Y40
I	99	UNK	-	see _pdbx_entry_details.sequence_details	UNP A0A2T5Y40
I	100	UNK	-	see _pdbx_entry_details.sequence_details	UNP A0A2T5Y40
I	101	UNK	-	see _pdbx_entry_details.sequence_details	UNP A0A2T5Y40

Continued on next page

Continued from previous page...

Chain	Residue	Modelled	Actual	Comment	Reference
I	102	UNK	-	see _pdbx_entry_details.sequence_details	UNP A0A2T5Y40
J	3	UNK	-	see _pdbx_entry_details.sequence_details	UNP A0A2T5Y40
J	4	UNK	-	see _pdbx_entry_details.sequence_details	UNP A0A2T5Y40
J	5	UNK	-	see _pdbx_entry_details.sequence_details	UNP A0A2T5Y40
J	6	UNK	-	see _pdbx_entry_details.sequence_details	UNP A0A2T5Y40
J	7	UNK	-	see _pdbx_entry_details.sequence_details	UNP A0A2T5Y40
J	8	UNK	-	see _pdbx_entry_details.sequence_details	UNP A0A2T5Y40
J	9	UNK	-	see _pdbx_entry_details.sequence_details	UNP A0A2T5Y40
J	10	UNK	-	see _pdbx_entry_details.sequence_details	UNP A0A2T5Y40
J	11	UNK	-	see _pdbx_entry_details.sequence_details	UNP A0A2T5Y40
J	12	UNK	-	see _pdbx_entry_details.sequence_details	UNP A0A2T5Y40
J	13	UNK	-	see _pdbx_entry_details.sequence_details	UNP A0A2T5Y40
J	14	UNK	-	see _pdbx_entry_details.sequence_details	UNP A0A2T5Y40
J	15	UNK	-	see _pdbx_entry_details.sequence_details	UNP A0A2T5Y40
J	16	UNK	-	see _pdbx_entry_details.sequence_details	UNP A0A2T5Y40
J	17	UNK	-	see _pdbx_entry_details.sequence_details	UNP A0A2T5Y40
J	18	UNK	-	see _pdbx_entry_details.sequence_details	UNP A0A2T5Y40
J	19	UNK	-	see _pdbx_entry_details.sequence_details	UNP A0A2T5Y40
J	20	UNK	-	see _pdbx_entry_details.sequence_details	UNP A0A2T5Y40
J	21	UNK	-	see _pdbx_entry_details.sequence_details	UNP A0A2T5Y40
J	22	UNK	-	see _pdbx_entry_details.sequence_details	UNP A0A2T5Y40
J	23	UNK	-	see _pdbx_entry_details.sequence_details	UNP A0A2T5Y40
J	24	UNK	-	see _pdbx_entry_details.sequence_details	UNP A0A2T5Y40
J	25	UNK	-	see _pdbx_entry_details.sequence_details	UNP A0A2T5Y40
J	26	UNK	-	see _pdbx_entry_details.sequence_details	UNP A0A2T5Y40
J	27	UNK	-	see _pdbx_entry_details.sequence_details	UNP A0A2T5Y40
J	28	UNK	-	see _pdbx_entry_details.sequence_details	UNP A0A2T5Y40
J	29	UNK	-	see _pdbx_entry_details.sequence_details	UNP A0A2T5Y40
J	30	UNK	-	see _pdbx_entry_details.sequence_details	UNP A0A2T5Y40
J	31	UNK	-	see _pdbx_entry_details.sequence_details	UNP A0A2T5Y40
J	32	UNK	-	see _pdbx_entry_details.sequence_details	UNP A0A2T5Y40
J	33	UNK	-	see _pdbx_entry_details.sequence_details	UNP A0A2T5Y40
J	34	UNK	-	see _pdbx_entry_details.sequence_details	UNP A0A2T5Y40
J	35	UNK	-	see _pdbx_entry_details.sequence_details	UNP A0A2T5Y40
J	36	UNK	-	see _pdbx_entry_details.sequence_details	UNP A0A2T5Y40
J	37	UNK	-	see _pdbx_entry_details.sequence_details	UNP A0A2T5Y40
J	38	UNK	-	see _pdbx_entry_details.sequence_details	UNP A0A2T5Y40
J	84	UNK	-	see _pdbx_entry_details.sequence_details	UNP A0A2T5Y40
J	85	UNK	-	see _pdbx_entry_details.sequence_details	UNP A0A2T5Y40
J	86	UNK	-	see _pdbx_entry_details.sequence_details	UNP A0A2T5Y40
J	87	UNK	-	see _pdbx_entry_details.sequence_details	UNP A0A2T5Y40
J	88	UNK	-	see _pdbx_entry_details.sequence_details	UNP A0A2T5Y40

Continued on next page

Continued from previous page...

Chain	Residue	Modelled	Actual	Comment	Reference
J	89	UNK	-	see __pdbx__entry__details.sequence__details	UNP A0A2T5Y40
J	90	UNK	-	see __pdbx__entry__details.sequence__details	UNP A0A2T5Y40
J	91	UNK	-	see __pdbx__entry__details.sequence__details	UNP A0A2T5Y40
J	92	UNK	-	see __pdbx__entry__details.sequence__details	UNP A0A2T5Y40
J	93	UNK	-	see __pdbx__entry__details.sequence__details	UNP A0A2T5Y40
J	94	UNK	-	see __pdbx__entry__details.sequence__details	UNP A0A2T5Y40
J	95	UNK	-	see __pdbx__entry__details.sequence__details	UNP A0A2T5Y40
J	96	UNK	-	see __pdbx__entry__details.sequence__details	UNP A0A2T5Y40
J	97	UNK	-	see __pdbx__entry__details.sequence__details	UNP A0A2T5Y40
J	98	UNK	-	see __pdbx__entry__details.sequence__details	UNP A0A2T5Y40
J	99	UNK	-	see __pdbx__entry__details.sequence__details	UNP A0A2T5Y40
J	100	UNK	-	see __pdbx__entry__details.sequence__details	UNP A0A2T5Y40
J	101	UNK	-	see __pdbx__entry__details.sequence__details	UNP A0A2T5Y40
J	102	UNK	-	see __pdbx__entry__details.sequence__details	UNP A0A2T5Y40
E	3	UNK	-	see __pdbx__entry__details.sequence__details	UNP A0A2T5Y40
E	4	UNK	-	see __pdbx__entry__details.sequence__details	UNP A0A2T5Y40
E	5	UNK	-	see __pdbx__entry__details.sequence__details	UNP A0A2T5Y40
E	6	UNK	-	see __pdbx__entry__details.sequence__details	UNP A0A2T5Y40
E	7	UNK	-	see __pdbx__entry__details.sequence__details	UNP A0A2T5Y40
E	8	UNK	-	see __pdbx__entry__details.sequence__details	UNP A0A2T5Y40
E	9	UNK	-	see __pdbx__entry__details.sequence__details	UNP A0A2T5Y40
E	10	UNK	-	see __pdbx__entry__details.sequence__details	UNP A0A2T5Y40
E	11	UNK	-	see __pdbx__entry__details.sequence__details	UNP A0A2T5Y40
E	12	UNK	-	see __pdbx__entry__details.sequence__details	UNP A0A2T5Y40
E	13	UNK	-	see __pdbx__entry__details.sequence__details	UNP A0A2T5Y40
E	14	UNK	-	see __pdbx__entry__details.sequence__details	UNP A0A2T5Y40
E	15	UNK	-	see __pdbx__entry__details.sequence__details	UNP A0A2T5Y40
E	16	UNK	-	see __pdbx__entry__details.sequence__details	UNP A0A2T5Y40
E	17	UNK	-	see __pdbx__entry__details.sequence__details	UNP A0A2T5Y40
E	18	UNK	-	see __pdbx__entry__details.sequence__details	UNP A0A2T5Y40
E	19	UNK	-	see __pdbx__entry__details.sequence__details	UNP A0A2T5Y40
E	20	UNK	-	see __pdbx__entry__details.sequence__details	UNP A0A2T5Y40
E	21	UNK	-	see __pdbx__entry__details.sequence__details	UNP A0A2T5Y40
E	22	UNK	-	see __pdbx__entry__details.sequence__details	UNP A0A2T5Y40
E	23	UNK	-	see __pdbx__entry__details.sequence__details	UNP A0A2T5Y40
E	24	UNK	-	see __pdbx__entry__details.sequence__details	UNP A0A2T5Y40
E	25	UNK	-	see __pdbx__entry__details.sequence__details	UNP A0A2T5Y40
E	26	UNK	-	see __pdbx__entry__details.sequence__details	UNP A0A2T5Y40
E	27	UNK	-	see __pdbx__entry__details.sequence__details	UNP A0A2T5Y40
E	28	UNK	-	see __pdbx__entry__details.sequence__details	UNP A0A2T5Y40
E	29	UNK	-	see __pdbx__entry__details.sequence__details	UNP A0A2T5Y40
E	30	UNK	-	see __pdbx__entry__details.sequence__details	UNP A0A2T5Y40

Continued on next page

Continued from previous page...

Chain	Residue	Modelled	Actual	Comment	Reference
E	31	UNK	-	see _pdbx_entry_details.sequence_details	UNP A0A2T5Y40
E	32	UNK	-	see _pdbx_entry_details.sequence_details	UNP A0A2T5Y40
E	33	UNK	-	see _pdbx_entry_details.sequence_details	UNP A0A2T5Y40
E	34	UNK	-	see _pdbx_entry_details.sequence_details	UNP A0A2T5Y40
E	35	UNK	-	see _pdbx_entry_details.sequence_details	UNP A0A2T5Y40
E	36	UNK	-	see _pdbx_entry_details.sequence_details	UNP A0A2T5Y40
E	37	UNK	-	see _pdbx_entry_details.sequence_details	UNP A0A2T5Y40
E	38	UNK	-	see _pdbx_entry_details.sequence_details	UNP A0A2T5Y40
E	84	UNK	-	see _pdbx_entry_details.sequence_details	UNP A0A2T5Y40
E	85	UNK	-	see _pdbx_entry_details.sequence_details	UNP A0A2T5Y40
E	86	UNK	-	see _pdbx_entry_details.sequence_details	UNP A0A2T5Y40
E	87	UNK	-	see _pdbx_entry_details.sequence_details	UNP A0A2T5Y40
E	88	UNK	-	see _pdbx_entry_details.sequence_details	UNP A0A2T5Y40
E	89	UNK	-	see _pdbx_entry_details.sequence_details	UNP A0A2T5Y40
E	90	UNK	-	see _pdbx_entry_details.sequence_details	UNP A0A2T5Y40
E	91	UNK	-	see _pdbx_entry_details.sequence_details	UNP A0A2T5Y40
E	92	UNK	-	see _pdbx_entry_details.sequence_details	UNP A0A2T5Y40
E	93	UNK	-	see _pdbx_entry_details.sequence_details	UNP A0A2T5Y40
E	94	UNK	-	see _pdbx_entry_details.sequence_details	UNP A0A2T5Y40
E	95	UNK	-	see _pdbx_entry_details.sequence_details	UNP A0A2T5Y40
E	96	UNK	-	see _pdbx_entry_details.sequence_details	UNP A0A2T5Y40
E	97	UNK	-	see _pdbx_entry_details.sequence_details	UNP A0A2T5Y40
E	98	UNK	-	see _pdbx_entry_details.sequence_details	UNP A0A2T5Y40
E	99	UNK	-	see _pdbx_entry_details.sequence_details	UNP A0A2T5Y40
E	100	UNK	-	see _pdbx_entry_details.sequence_details	UNP A0A2T5Y40
E	101	UNK	-	see _pdbx_entry_details.sequence_details	UNP A0A2T5Y40
E	102	UNK	-	see _pdbx_entry_details.sequence_details	UNP A0A2T5Y40
F	3	UNK	-	see _pdbx_entry_details.sequence_details	UNP A0A2T5Y40
F	4	UNK	-	see _pdbx_entry_details.sequence_details	UNP A0A2T5Y40
F	5	UNK	-	see _pdbx_entry_details.sequence_details	UNP A0A2T5Y40
F	6	UNK	-	see _pdbx_entry_details.sequence_details	UNP A0A2T5Y40
F	7	UNK	-	see _pdbx_entry_details.sequence_details	UNP A0A2T5Y40
F	8	UNK	-	see _pdbx_entry_details.sequence_details	UNP A0A2T5Y40
F	9	UNK	-	see _pdbx_entry_details.sequence_details	UNP A0A2T5Y40
F	10	UNK	-	see _pdbx_entry_details.sequence_details	UNP A0A2T5Y40
F	11	UNK	-	see _pdbx_entry_details.sequence_details	UNP A0A2T5Y40
F	12	UNK	-	see _pdbx_entry_details.sequence_details	UNP A0A2T5Y40
F	13	UNK	-	see _pdbx_entry_details.sequence_details	UNP A0A2T5Y40
F	14	UNK	-	see _pdbx_entry_details.sequence_details	UNP A0A2T5Y40
F	15	UNK	-	see _pdbx_entry_details.sequence_details	UNP A0A2T5Y40
F	16	UNK	-	see _pdbx_entry_details.sequence_details	UNP A0A2T5Y40
F	17	UNK	-	see _pdbx_entry_details.sequence_details	UNP A0A2T5Y40

Continued on next page

Continued from previous page...

Chain	Residue	Modelled	Actual	Comment	Reference
F	18	UNK	-	see _pdbx_entry_details.sequence_details	UNP A0A2T5Y40
F	19	UNK	-	see _pdbx_entry_details.sequence_details	UNP A0A2T5Y40
F	20	UNK	-	see _pdbx_entry_details.sequence_details	UNP A0A2T5Y40
F	21	UNK	-	see _pdbx_entry_details.sequence_details	UNP A0A2T5Y40
F	22	UNK	-	see _pdbx_entry_details.sequence_details	UNP A0A2T5Y40
F	23	UNK	-	see _pdbx_entry_details.sequence_details	UNP A0A2T5Y40
F	24	UNK	-	see _pdbx_entry_details.sequence_details	UNP A0A2T5Y40
F	25	UNK	-	see _pdbx_entry_details.sequence_details	UNP A0A2T5Y40
F	26	UNK	-	see _pdbx_entry_details.sequence_details	UNP A0A2T5Y40
F	27	UNK	-	see _pdbx_entry_details.sequence_details	UNP A0A2T5Y40
F	28	UNK	-	see _pdbx_entry_details.sequence_details	UNP A0A2T5Y40
F	29	UNK	-	see _pdbx_entry_details.sequence_details	UNP A0A2T5Y40
F	30	UNK	-	see _pdbx_entry_details.sequence_details	UNP A0A2T5Y40
F	31	UNK	-	see _pdbx_entry_details.sequence_details	UNP A0A2T5Y40
F	32	UNK	-	see _pdbx_entry_details.sequence_details	UNP A0A2T5Y40
F	33	UNK	-	see _pdbx_entry_details.sequence_details	UNP A0A2T5Y40
F	34	UNK	-	see _pdbx_entry_details.sequence_details	UNP A0A2T5Y40
F	35	UNK	-	see _pdbx_entry_details.sequence_details	UNP A0A2T5Y40
F	36	UNK	-	see _pdbx_entry_details.sequence_details	UNP A0A2T5Y40
F	37	UNK	-	see _pdbx_entry_details.sequence_details	UNP A0A2T5Y40
F	38	UNK	-	see _pdbx_entry_details.sequence_details	UNP A0A2T5Y40
F	84	UNK	-	see _pdbx_entry_details.sequence_details	UNP A0A2T5Y40
F	85	UNK	-	see _pdbx_entry_details.sequence_details	UNP A0A2T5Y40
F	86	UNK	-	see _pdbx_entry_details.sequence_details	UNP A0A2T5Y40
F	87	UNK	-	see _pdbx_entry_details.sequence_details	UNP A0A2T5Y40
F	88	UNK	-	see _pdbx_entry_details.sequence_details	UNP A0A2T5Y40
F	89	UNK	-	see _pdbx_entry_details.sequence_details	UNP A0A2T5Y40
F	90	UNK	-	see _pdbx_entry_details.sequence_details	UNP A0A2T5Y40
F	91	UNK	-	see _pdbx_entry_details.sequence_details	UNP A0A2T5Y40
F	92	UNK	-	see _pdbx_entry_details.sequence_details	UNP A0A2T5Y40
F	93	UNK	-	see _pdbx_entry_details.sequence_details	UNP A0A2T5Y40
F	94	UNK	-	see _pdbx_entry_details.sequence_details	UNP A0A2T5Y40
F	95	UNK	-	see _pdbx_entry_details.sequence_details	UNP A0A2T5Y40
F	96	UNK	-	see _pdbx_entry_details.sequence_details	UNP A0A2T5Y40
F	97	UNK	-	see _pdbx_entry_details.sequence_details	UNP A0A2T5Y40
F	98	UNK	-	see _pdbx_entry_details.sequence_details	UNP A0A2T5Y40
F	99	UNK	-	see _pdbx_entry_details.sequence_details	UNP A0A2T5Y40
F	100	UNK	-	see _pdbx_entry_details.sequence_details	UNP A0A2T5Y40
F	101	UNK	-	see _pdbx_entry_details.sequence_details	UNP A0A2T5Y40
F	102	UNK	-	see _pdbx_entry_details.sequence_details	UNP A0A2T5Y40
K	3	UNK	-	see _pdbx_entry_details.sequence_details	UNP A0A2T5Y40
K	4	UNK	-	see _pdbx_entry_details.sequence_details	UNP A0A2T5Y40

Continued on next page

Continued from previous page...

Chain	Residue	Modelled	Actual	Comment	Reference
K	5	UNK	-	see _pdbx_entry_details.sequence_details	UNP A0A2T5Y40
K	6	UNK	-	see _pdbx_entry_details.sequence_details	UNP A0A2T5Y40
K	7	UNK	-	see _pdbx_entry_details.sequence_details	UNP A0A2T5Y40
K	8	UNK	-	see _pdbx_entry_details.sequence_details	UNP A0A2T5Y40
K	9	UNK	-	see _pdbx_entry_details.sequence_details	UNP A0A2T5Y40
K	10	UNK	-	see _pdbx_entry_details.sequence_details	UNP A0A2T5Y40
K	11	UNK	-	see _pdbx_entry_details.sequence_details	UNP A0A2T5Y40
K	12	UNK	-	see _pdbx_entry_details.sequence_details	UNP A0A2T5Y40
K	13	UNK	-	see _pdbx_entry_details.sequence_details	UNP A0A2T5Y40
K	14	UNK	-	see _pdbx_entry_details.sequence_details	UNP A0A2T5Y40
K	15	UNK	-	see _pdbx_entry_details.sequence_details	UNP A0A2T5Y40
K	16	UNK	-	see _pdbx_entry_details.sequence_details	UNP A0A2T5Y40
K	17	UNK	-	see _pdbx_entry_details.sequence_details	UNP A0A2T5Y40
K	18	UNK	-	see _pdbx_entry_details.sequence_details	UNP A0A2T5Y40
K	19	UNK	-	see _pdbx_entry_details.sequence_details	UNP A0A2T5Y40
K	20	UNK	-	see _pdbx_entry_details.sequence_details	UNP A0A2T5Y40
K	21	UNK	-	see _pdbx_entry_details.sequence_details	UNP A0A2T5Y40
K	22	UNK	-	see _pdbx_entry_details.sequence_details	UNP A0A2T5Y40
K	23	UNK	-	see _pdbx_entry_details.sequence_details	UNP A0A2T5Y40
K	24	UNK	-	see _pdbx_entry_details.sequence_details	UNP A0A2T5Y40
K	25	UNK	-	see _pdbx_entry_details.sequence_details	UNP A0A2T5Y40
K	26	UNK	-	see _pdbx_entry_details.sequence_details	UNP A0A2T5Y40
K	27	UNK	-	see _pdbx_entry_details.sequence_details	UNP A0A2T5Y40
K	28	UNK	-	see _pdbx_entry_details.sequence_details	UNP A0A2T5Y40
K	29	UNK	-	see _pdbx_entry_details.sequence_details	UNP A0A2T5Y40
K	30	UNK	-	see _pdbx_entry_details.sequence_details	UNP A0A2T5Y40
K	31	UNK	-	see _pdbx_entry_details.sequence_details	UNP A0A2T5Y40
K	32	UNK	-	see _pdbx_entry_details.sequence_details	UNP A0A2T5Y40
K	33	UNK	-	see _pdbx_entry_details.sequence_details	UNP A0A2T5Y40
K	34	UNK	-	see _pdbx_entry_details.sequence_details	UNP A0A2T5Y40
K	35	UNK	-	see _pdbx_entry_details.sequence_details	UNP A0A2T5Y40
K	36	UNK	-	see _pdbx_entry_details.sequence_details	UNP A0A2T5Y40
K	37	UNK	-	see _pdbx_entry_details.sequence_details	UNP A0A2T5Y40
K	38	UNK	-	see _pdbx_entry_details.sequence_details	UNP A0A2T5Y40
K	84	UNK	-	see _pdbx_entry_details.sequence_details	UNP A0A2T5Y40
K	85	UNK	-	see _pdbx_entry_details.sequence_details	UNP A0A2T5Y40
K	86	UNK	-	see _pdbx_entry_details.sequence_details	UNP A0A2T5Y40
K	87	UNK	-	see _pdbx_entry_details.sequence_details	UNP A0A2T5Y40
K	88	UNK	-	see _pdbx_entry_details.sequence_details	UNP A0A2T5Y40
K	89	UNK	-	see _pdbx_entry_details.sequence_details	UNP A0A2T5Y40
K	90	UNK	-	see _pdbx_entry_details.sequence_details	UNP A0A2T5Y40
K	91	UNK	-	see _pdbx_entry_details.sequence_details	UNP A0A2T5Y40

Continued on next page

Continued from previous page...

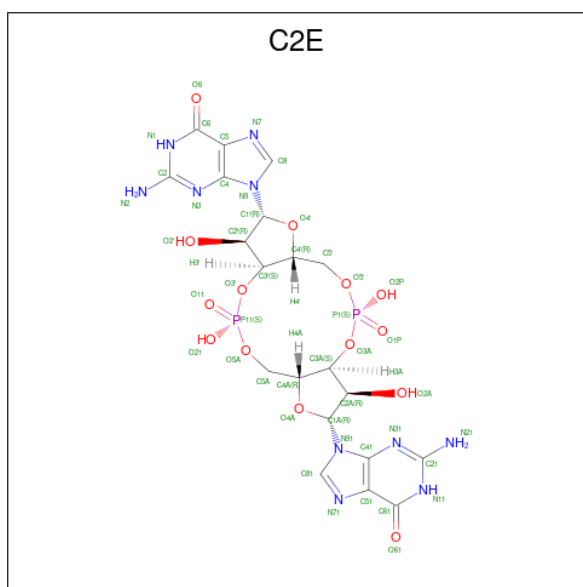
Chain	Residue	Modelled	Actual	Comment	Reference
K	92	UNK	-	see _pdbx_entry_details.sequence_details	UNP A0A2T5Y40
K	93	UNK	-	see _pdbx_entry_details.sequence_details	UNP A0A2T5Y40
K	94	UNK	-	see _pdbx_entry_details.sequence_details	UNP A0A2T5Y40
K	95	UNK	-	see _pdbx_entry_details.sequence_details	UNP A0A2T5Y40
K	96	UNK	-	see _pdbx_entry_details.sequence_details	UNP A0A2T5Y40
K	97	UNK	-	see _pdbx_entry_details.sequence_details	UNP A0A2T5Y40
K	98	UNK	-	see _pdbx_entry_details.sequence_details	UNP A0A2T5Y40
K	99	UNK	-	see _pdbx_entry_details.sequence_details	UNP A0A2T5Y40
K	100	UNK	-	see _pdbx_entry_details.sequence_details	UNP A0A2T5Y40
K	101	UNK	-	see _pdbx_entry_details.sequence_details	UNP A0A2T5Y40
K	102	UNK	-	see _pdbx_entry_details.sequence_details	UNP A0A2T5Y40
L	3	UNK	-	see _pdbx_entry_details.sequence_details	UNP A0A2T5Y40
L	4	UNK	-	see _pdbx_entry_details.sequence_details	UNP A0A2T5Y40
L	5	UNK	-	see _pdbx_entry_details.sequence_details	UNP A0A2T5Y40
L	6	UNK	-	see _pdbx_entry_details.sequence_details	UNP A0A2T5Y40
L	7	UNK	-	see _pdbx_entry_details.sequence_details	UNP A0A2T5Y40
L	8	UNK	-	see _pdbx_entry_details.sequence_details	UNP A0A2T5Y40
L	9	UNK	-	see _pdbx_entry_details.sequence_details	UNP A0A2T5Y40
L	10	UNK	-	see _pdbx_entry_details.sequence_details	UNP A0A2T5Y40
L	11	UNK	-	see _pdbx_entry_details.sequence_details	UNP A0A2T5Y40
L	12	UNK	-	see _pdbx_entry_details.sequence_details	UNP A0A2T5Y40
L	13	UNK	-	see _pdbx_entry_details.sequence_details	UNP A0A2T5Y40
L	14	UNK	-	see _pdbx_entry_details.sequence_details	UNP A0A2T5Y40
L	15	UNK	-	see _pdbx_entry_details.sequence_details	UNP A0A2T5Y40
L	16	UNK	-	see _pdbx_entry_details.sequence_details	UNP A0A2T5Y40
L	17	UNK	-	see _pdbx_entry_details.sequence_details	UNP A0A2T5Y40
L	18	UNK	-	see _pdbx_entry_details.sequence_details	UNP A0A2T5Y40
L	19	UNK	-	see _pdbx_entry_details.sequence_details	UNP A0A2T5Y40
L	20	UNK	-	see _pdbx_entry_details.sequence_details	UNP A0A2T5Y40
L	21	UNK	-	see _pdbx_entry_details.sequence_details	UNP A0A2T5Y40
L	22	UNK	-	see _pdbx_entry_details.sequence_details	UNP A0A2T5Y40
L	23	UNK	-	see _pdbx_entry_details.sequence_details	UNP A0A2T5Y40
L	24	UNK	-	see _pdbx_entry_details.sequence_details	UNP A0A2T5Y40
L	25	UNK	-	see _pdbx_entry_details.sequence_details	UNP A0A2T5Y40
L	26	UNK	-	see _pdbx_entry_details.sequence_details	UNP A0A2T5Y40
L	27	UNK	-	see _pdbx_entry_details.sequence_details	UNP A0A2T5Y40
L	28	UNK	-	see _pdbx_entry_details.sequence_details	UNP A0A2T5Y40
L	29	UNK	-	see _pdbx_entry_details.sequence_details	UNP A0A2T5Y40
L	30	UNK	-	see _pdbx_entry_details.sequence_details	UNP A0A2T5Y40
L	31	UNK	-	see _pdbx_entry_details.sequence_details	UNP A0A2T5Y40
L	32	UNK	-	see _pdbx_entry_details.sequence_details	UNP A0A2T5Y40
L	33	UNK	-	see _pdbx_entry_details.sequence_details	UNP A0A2T5Y40

Continued on next page

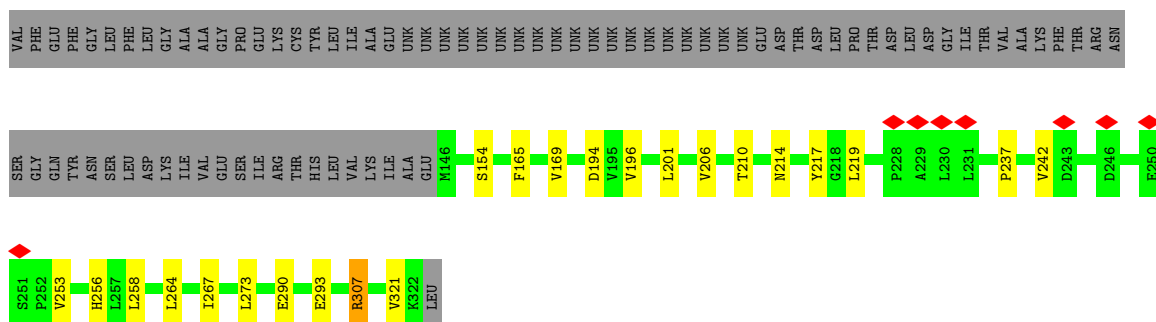
Continued from previous page...

Chain	Residue	Modelled	Actual	Comment	Reference
L	34	UNK	-	see _pdbx_entry_details.sequence_details	UNP A0A2T5Y40
L	35	UNK	-	see _pdbx_entry_details.sequence_details	UNP A0A2T5Y40
L	36	UNK	-	see _pdbx_entry_details.sequence_details	UNP A0A2T5Y40
L	37	UNK	-	see _pdbx_entry_details.sequence_details	UNP A0A2T5Y40
L	38	UNK	-	see _pdbx_entry_details.sequence_details	UNP A0A2T5Y40
L	84	UNK	-	see _pdbx_entry_details.sequence_details	UNP A0A2T5Y40
L	85	UNK	-	see _pdbx_entry_details.sequence_details	UNP A0A2T5Y40
L	86	UNK	-	see _pdbx_entry_details.sequence_details	UNP A0A2T5Y40
L	87	UNK	-	see _pdbx_entry_details.sequence_details	UNP A0A2T5Y40
L	88	UNK	-	see _pdbx_entry_details.sequence_details	UNP A0A2T5Y40
L	89	UNK	-	see _pdbx_entry_details.sequence_details	UNP A0A2T5Y40
L	90	UNK	-	see _pdbx_entry_details.sequence_details	UNP A0A2T5Y40
L	91	UNK	-	see _pdbx_entry_details.sequence_details	UNP A0A2T5Y40
L	92	UNK	-	see _pdbx_entry_details.sequence_details	UNP A0A2T5Y40
L	93	UNK	-	see _pdbx_entry_details.sequence_details	UNP A0A2T5Y40
L	94	UNK	-	see _pdbx_entry_details.sequence_details	UNP A0A2T5Y40
L	95	UNK	-	see _pdbx_entry_details.sequence_details	UNP A0A2T5Y40
L	96	UNK	-	see _pdbx_entry_details.sequence_details	UNP A0A2T5Y40
L	97	UNK	-	see _pdbx_entry_details.sequence_details	UNP A0A2T5Y40
L	98	UNK	-	see _pdbx_entry_details.sequence_details	UNP A0A2T5Y40
L	99	UNK	-	see _pdbx_entry_details.sequence_details	UNP A0A2T5Y40
L	100	UNK	-	see _pdbx_entry_details.sequence_details	UNP A0A2T5Y40
L	101	UNK	-	see _pdbx_entry_details.sequence_details	UNP A0A2T5Y40
L	102	UNK	-	see _pdbx_entry_details.sequence_details	UNP A0A2T5Y40

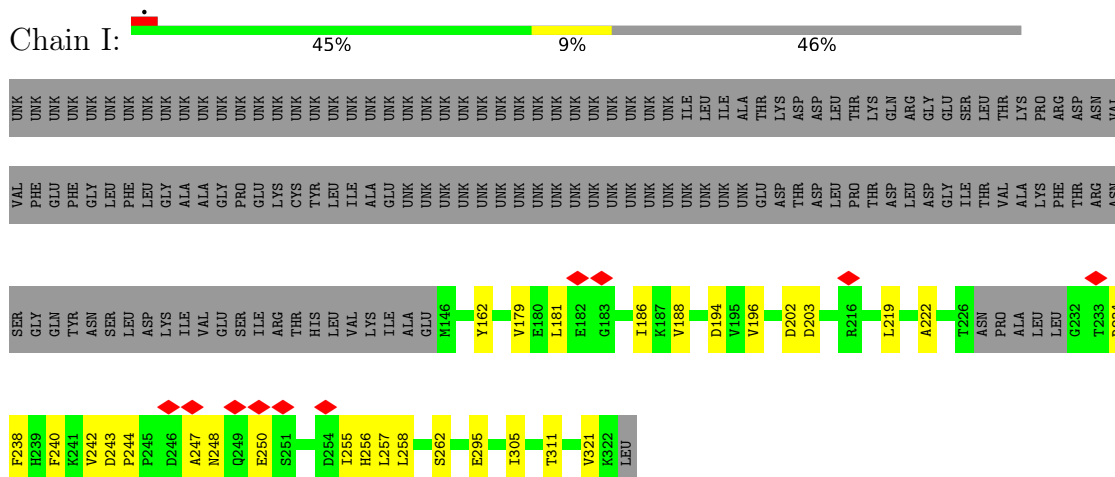
- Molecule 2 is 9,9'-[(2R,3R,3aS,5S,7aR,9R,10R,10aS,12S,14aR)-3,5,10,12-tetrahydro-5,12-dioxidoctahydro-2H,7H-difuro[3,2-d:3',2'-j][1,3,7,9,2,8]tetraoxadiphosphacyclododecine-2,9-diyl]bis(2-amino-1,9-dihydro-6H-purin-6-one) (three-letter code: C2E) (formula: C₂₀H₂₄N₁₀O₁₄P₂) (labeled as "Ligand of Interest" by depositor).



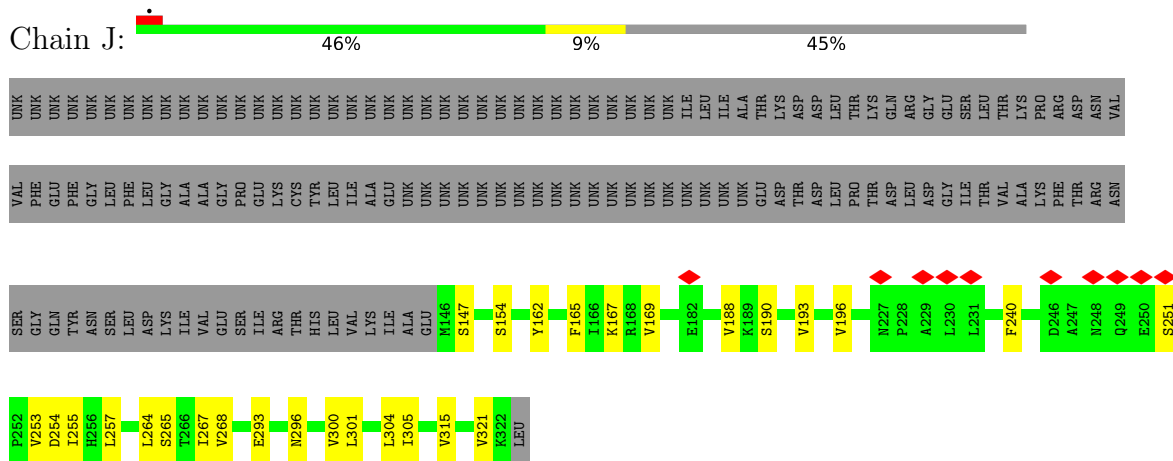
Mol	Chain	Residues	Atoms					AltConf
2	A	1	Total 46	C 20	N 10	O 14	P 2	0
2	G	1	Total 46	C 20	N 10	O 14	P 2	0
2	C	1	Total 46	C 20	N 10	O 14	P 2	0
2	I	1	Total 46	C 20	N 10	O 14	P 2	0
2	F	1	Total 46	C 20	N 10	O 14	P 2	0
2	K	1	Total 46	C 20	N 10	O 14	P 2	0



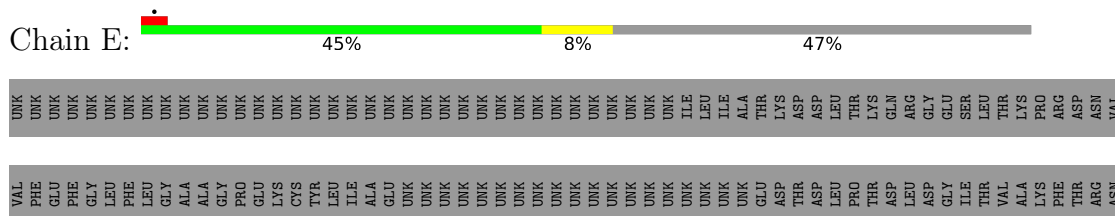
- Molecule 1: CD-NTase-associated protein 12

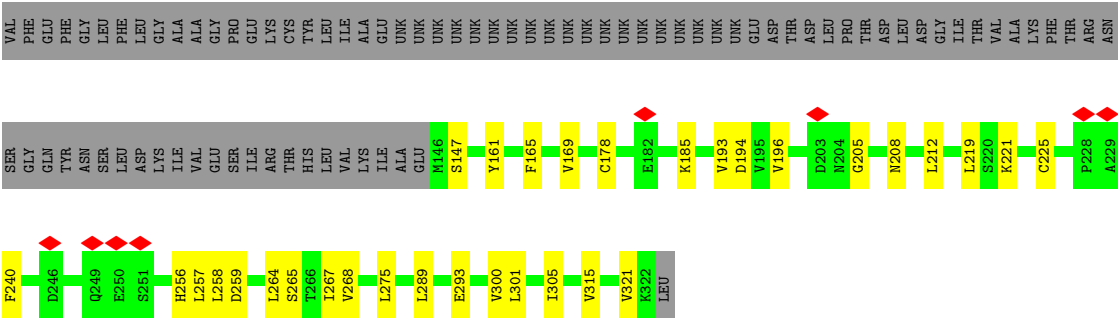


- Molecule 1: CD-NTase-associated protein 12



- Molecule 1: CD-NTase-associated protein 12





4 Experimental information

Property	Value	Source
EM reconstruction method	SINGLE PARTICLE	Depositor
Imposed symmetry	POINT, Not provided	
Number of particles used	2593147	Depositor
Resolution determination method	FSC 0.143 CUT-OFF	Depositor
CTF correction method	PHASE FLIPPING AND AMPLITUDE CORRECTION	Depositor
Microscope	FEI TITAN KRIOS	Depositor
Voltage (kV)	300	Depositor
Electron dose ($e^-/\text{\AA}^2$)	55.5	Depositor
Minimum defocus (nm)	1200	Depositor
Maximum defocus (nm)	2100	Depositor
Magnification	Not provided	
Image detector	GATAN K3 (6k x 4k)	Depositor
Maximum map value	2.448	Depositor
Minimum map value	-1.567	Depositor
Average map value	0.007	Depositor
Map value standard deviation	0.061	Depositor
Recommended contour level	0.25	Depositor
Map size (\AA)	264.0, 264.0, 264.0	wwPDB
Map dimensions	320, 320, 320	wwPDB
Map angles ($^\circ$)	90.0, 90.0, 90.0	wwPDB
Pixel spacing (\AA)	0.825, 0.825, 0.825	Depositor

5 Model quality [i](#)

5.1 Standard geometry [i](#)

Bond lengths and bond angles in the following residue types are not validated in this section: C2E

The Z score for a bond length (or angle) is the number of standard deviations the observed value is removed from the expected value. A bond length (or angle) with $|Z| > 5$ is considered an outlier worth inspection. RMSZ is the root-mean-square of all Z scores of the bond lengths (or angles).

Mol	Chain	Bond lengths		Bond angles	
		RMSZ	# Z >5	RMSZ	# Z >5
1	A	0.26	0/1368	0.47	0/1848
1	B	0.26	0/1415	0.45	0/1918
1	C	0.26	0/1368	0.46	0/1848
1	D	0.26	0/1415	0.45	0/1918
1	E	0.25	0/1368	0.46	0/1848
1	F	0.26	0/1415	0.46	0/1918
1	G	0.27	0/1492	0.48	0/2017
1	H	0.26	0/1872	0.47	0/2530
1	I	0.26	0/1377	0.47	0/1863
1	J	0.26	0/1415	0.46	0/1918
1	K	0.26	0/1377	0.48	0/1863
1	L	0.26	0/1415	0.46	0/1918
All	All	0.26	0/17297	0.47	0/23407

There are no bond length outliers.

There are no bond angle outliers.

There are no chirality outliers.

There are no planarity outliers.

5.2 Too-close contacts [i](#)

In the following table, the Non-H and H(model) columns list the number of non-hydrogen atoms and hydrogen atoms in the chain respectively. The H(added) column lists the number of hydrogen atoms added and optimized by MolProbity. The Clashes column lists the number of clashes within the asymmetric unit, whereas Symm-Clashes lists symmetry-related clashes.

Mol	Chain	Non-H	H(model)	H(added)	Clashes	Symm-Clashes
1	A	1345	0	1351	20	0

Continued on next page...

Continued from previous page...

Mol	Chain	Non-H	H(model)	H(added)	Clashes	Symm-Clashes
1	B	1388	0	1400	23	0
1	C	1345	0	1351	18	0
1	D	1388	0	1400	16	0
1	E	1345	0	1351	20	0
1	F	1388	0	1400	23	0
1	G	1740	0	1541	37	0
1	H	1980	0	1906	28	0
1	I	1352	0	1359	19	0
1	J	1388	0	1400	19	0
1	K	1352	0	1359	33	0
1	L	1388	0	1400	20	0
2	A	46	0	22	2	0
2	C	46	0	22	3	0
2	F	46	0	22	2	0
2	G	46	0	22	4	0
2	I	46	0	22	2	0
2	K	46	0	22	2	0
All	All	17675	0	17350	268	0

The all-atom clashscore is defined as the number of clashes found per 1000 atoms (including hydrogen atoms). The all-atom clashscore for this structure is 8.

All (268) close contacts within the same asymmetric unit are listed below, sorted by their clash magnitude.

Atom-1	Atom-2	Interatomic distance (Å)	Clash overlap (Å)
1:H:154:SER:OG	1:H:293:GLU:OE1	1.85	0.93
1:C:154:SER:OG	1:C:293:GLU:OE1	1.91	0.87
1:J:154:SER:OG	1:J:293:GLU:OE1	1.91	0.86
1:K:194:ASP:OD2	1:K:256:HIS:NE2	2.09	0.85
1:G:282:GLN:NE2	1:G:287:ASP:OD2	2.09	0.85
1:B:194:ASP:OD2	1:B:256:HIS:NE2	2.09	0.85
1:J:196:VAL:HG13	1:J:321:VAL:HG21	1.59	0.84
1:F:219:LEU:HD11	1:F:258:LEU:HD12	1.58	0.84
1:B:219:LEU:HD11	1:B:258:LEU:HD12	1.60	0.82
1:L:196:VAL:HG13	1:L:321:VAL:HG21	1.63	0.81
1:H:194:ASP:OD1	1:H:256:HIS:NE2	2.14	0.81
1:D:217:TYR:HB2	1:D:219:LEU:HD13	1.64	0.80
1:L:194:ASP:OD2	1:L:256:HIS:NE2	2.17	0.77
1:H:196:VAL:HG13	1:H:321:VAL:HG21	1.66	0.76
1:B:217:TYR:HB2	1:B:219:LEU:HD13	1.69	0.74
1:D:219:LEU:HD11	1:D:258:LEU:HD12	1.67	0.74

Continued on next page...

Continued from previous page...

Atom-1	Atom-2	Interatomic distance (Å)	Clash overlap (Å)
1:D:196:VAL:HG13	1:D:321:VAL:HG21	1.69	0.74
1:I:194:ASP:OD2	1:I:256:HIS:NE2	2.21	0.73
1:F:282:GLN:NE2	1:F:287:ASP:OD2	2.22	0.72
1:A:242:VAL:HG12	1:A:244:PRO:HD2	1.71	0.71
1:H:193:VAL:CG1	1:H:315:VAL:HG22	2.21	0.70
1:A:204:ASN:OD1	1:C:308:ASN:ND2	2.24	0.70
1:F:217:TYR:HB2	1:F:219:LEU:HD13	1.75	0.69
1:A:190:SER:OG	1:A:254:ASP:OD1	2.06	0.68
1:B:201:LEU:N	1:B:290:GLU:OE2	2.24	0.68
1:B:254:ASP:OD1	1:B:255:ILE:N	2.27	0.68
1:G:82:VAL:HG12	1:H:82:VAL:HG23	1.75	0.68
1:G:196:VAL:CG1	1:G:321:VAL:HG11	2.26	0.66
1:A:196:VAL:HG13	1:A:321:VAL:HG21	1.78	0.66
1:I:248:ASN:OD1	1:I:250:GLU:N	2.28	0.66
1:G:194:ASP:HB2	1:G:258:LEU:HD23	1.78	0.66
1:L:240:PHE:HB3	1:L:257:LEU:HD23	1.78	0.66
1:F:194:ASP:OD2	1:F:256:HIS:NE2	2.29	0.66
1:J:240:PHE:HB3	1:J:257:LEU:HD23	1.78	0.66
1:G:194:ASP:OD2	1:G:256:HIS:NE2	2.27	0.65
1:G:172:GLU:OE1	1:G:224:THR:HG21	1.98	0.64
1:K:305:ILE:HG23	1:K:311:THR:O	1.99	0.63
1:E:164:SER:OG	2:F:401:C2E:O1P	2.15	0.63
1:K:214:ASN:OD1	1:K:219:LEU:HD12	1.99	0.63
1:K:158:ALA:HB1	1:K:301:LEU:HD22	1.81	0.63
1:E:221:LYS:NZ	1:F:226:THR:OG1	2.33	0.62
1:B:170:CYS:SG	1:B:311:THR:HG22	2.41	0.61
1:G:202:ASP:OD1	1:G:203:ASP:N	2.34	0.61
1:D:201:LEU:N	1:D:290:GLU:OE2	2.32	0.60
1:E:196:VAL:HG13	1:E:321:VAL:HG21	1.83	0.60
1:K:201:LEU:HD21	1:K:294:LEU:HD21	1.82	0.60
1:G:262:SER:OG	2:G:401:C2E:O21	2.11	0.60
1:I:219:LEU:HD11	1:I:258:LEU:HD12	1.83	0.60
1:K:278:ASN:OD1	1:K:279:GLN:NE2	2.35	0.60
1:F:170:CYS:SG	1:F:311:THR:HG22	2.41	0.59
1:I:242:VAL:HG12	1:I:244:PRO:HD2	1.84	0.59
1:A:243:ASP:OD1	1:A:244:PRO:HD3	2.03	0.59
1:F:196:VAL:HG13	1:F:321:VAL:HG21	1.85	0.59
1:E:165:PHE:O	1:E:169:VAL:HG12	2.03	0.58
1:H:83:PHE:O	1:H:87:LEU:HD23	2.04	0.58
1:K:297:PHE:O	1:K:301:LEU:HD23	2.04	0.58
1:A:201:LEU:N	1:A:290:GLU:OE2	2.34	0.57

Continued on next page...

Continued from previous page...

Atom-1	Atom-2	Interatomic distance (Å)	Clash overlap (Å)
1:H:193:VAL:HG12	1:H:315:VAL:HG22	1.85	0.57
1:G:290:GLU:OE2	1:G:294:LEU:HD11	2.04	0.57
1:G:305:ILE:HG23	1:G:311:THR:O	2.05	0.57
1:K:152:LEU:HD11	1:K:274:TYR:CG	2.40	0.57
1:D:210:THR:O	1:D:214:ASN:ND2	2.38	0.57
1:C:196:VAL:HG13	1:C:321:VAL:HG21	1.87	0.56
1:A:165:PHE:O	1:A:169:VAL:HG12	2.06	0.56
1:J:162:TYR:CD2	1:J:304:LEU:HB3	2.40	0.56
1:A:243:ASP:OD1	1:A:244:PRO:CD	2.54	0.56
1:B:194:ASP:HB3	1:B:318:LEU:HD13	1.87	0.56
1:I:234:ARG:NH2	2:I:401:C2E:O6	2.38	0.56
1:I:196:VAL:HG13	1:I:321:VAL:HG21	1.88	0.56
1:G:234:ARG:NH2	2:G:401:C2E:O6	2.39	0.55
1:B:152:LEU:HD11	1:B:274:TYR:CG	2.42	0.55
1:I:188:VAL:HG22	1:I:255:ILE:HD12	1.89	0.55
1:E:193:VAL:CG1	1:E:315:VAL:HG22	2.37	0.54
1:A:195:VAL:CG2	1:A:317:VAL:HG22	2.38	0.54
1:C:237:PRO:O	2:C:401:C2E:N2	2.41	0.53
1:I:181:LEU:HD12	1:I:181:LEU:O	2.08	0.53
1:L:208:ASN:O	1:L:212:LEU:HD23	2.07	0.53
1:A:167:LYS:O	1:A:171:GLU:HG3	2.07	0.53
1:F:237:PRO:O	2:F:401:C2E:N11	2.40	0.53
1:E:194:ASP:OD2	1:E:256:HIS:NE2	2.41	0.53
1:F:217:TYR:CB	1:F:219:LEU:HD13	2.38	0.53
1:L:265:SER:O	1:L:268:VAL:HG12	2.09	0.53
1:A:203:ASP:OD1	1:A:204:ASN:N	2.41	0.53
1:A:215:LYS:NZ	1:C:177:GLU:OE2	2.37	0.52
1:A:280:VAL:CG2	1:D:273:LEU:HD21	2.39	0.52
1:C:195:VAL:CG2	1:C:317:VAL:HG22	2.39	0.52
1:I:305:ILE:HG23	1:I:311:THR:O	2.08	0.52
1:H:78:ARG:O	1:H:82:VAL:HG22	2.09	0.52
1:B:206:VAL:HG12	1:B:206:VAL:O	2.10	0.52
1:D:264:LEU:HD23	1:D:267:ILE:HD12	1.92	0.52
1:G:181:LEU:HD12	1:G:181:LEU:O	2.10	0.52
1:K:282:GLN:NE2	1:K:287:ASP:OD2	2.43	0.52
1:F:283:ASP:OD1	1:F:285:ASP:N	2.41	0.52
1:B:193:VAL:HG22	1:B:257:LEU:HB2	1.92	0.52
1:C:201:LEU:N	1:C:290:GLU:OE2	2.35	0.52
1:D:206:VAL:HG12	1:D:206:VAL:O	2.09	0.52
1:G:82:VAL:CG1	1:H:82:VAL:HG23	2.40	0.51
1:J:193:VAL:HG23	1:J:257:LEU:HB3	1.93	0.51

Continued on next page...

Continued from previous page...

Atom-1	Atom-2	Interatomic distance (Å)	Clash overlap (Å)
1:E:193:VAL:HG23	1:E:257:LEU:HB3	1.91	0.51
1:B:264:LEU:HD23	1:B:267:ILE:HD12	1.91	0.51
1:E:242:VAL:HG12	1:E:244:PRO:HD2	1.92	0.51
1:G:316:ASN:C	1:G:316:ASN:HD22	2.11	0.51
1:B:273:LEU:HD21	1:E:280:VAL:CG2	2.39	0.51
1:D:217:TYR:CB	1:D:219:LEU:HD13	2.39	0.51
1:I:162:TYR:OH	1:I:311:THR:OG1	2.05	0.51
1:L:185:LYS:NZ	1:L:225:CYS:SG	2.73	0.51
1:J:265:SER:O	1:J:268:VAL:HG12	2.11	0.51
1:G:195:VAL:HG11	1:G:301:LEU:CD2	2.41	0.50
1:H:240:PHE:HB3	1:H:257:LEU:HD23	1.92	0.50
1:H:81:VAL:HG13	1:H:99:LEU:HD13	1.93	0.50
1:L:161:TYR:OH	1:L:259:ASP:OD2	2.17	0.50
1:L:194:ASP:HB2	1:L:258:LEU:HD23	1.94	0.50
1:F:181:LEU:CD2	1:F:186:ILE:HD13	2.42	0.50
1:C:165:PHE:O	1:C:169:VAL:HG12	2.12	0.49
1:E:194:ASP:HB2	1:E:258:LEU:HD23	1.94	0.49
1:E:208:ASN:O	1:E:212:LEU:HD13	2.13	0.49
1:G:219:LEU:CD2	1:G:258:LEU:HD12	2.42	0.49
1:E:305:ILE:HD13	1:E:315:VAL:HG12	1.95	0.49
1:E:152:LEU:HD23	1:E:152:LEU:H	1.77	0.49
1:A:152:LEU:H	1:A:152:LEU:HD23	1.78	0.48
1:G:152:LEU:HD21	1:G:271:LEU:HD23	1.94	0.48
1:H:264:LEU:HD23	1:H:267:ILE:HD12	1.95	0.48
1:K:302:LYS:HD3	1:K:317:VAL:HG22	1.94	0.48
1:G:264:LEU:HD23	1:G:267:ILE:HD12	1.95	0.48
1:F:206:VAL:HG12	1:F:206:VAL:O	2.14	0.48
1:H:81:VAL:CG1	1:H:99:LEU:HD13	2.43	0.48
1:F:193:VAL:HG22	1:F:257:LEU:HB2	1.95	0.48
1:L:275:LEU:HD12	1:L:289:LEU:HD12	1.96	0.48
1:J:305:ILE:HD13	1:J:315:VAL:HG12	1.94	0.47
1:J:165:PHE:O	1:J:169:VAL:HG12	2.14	0.47
1:G:305:ILE:HD13	1:G:315:VAL:HG12	1.95	0.47
1:G:197:ILE:HG22	1:G:294:LEU:HD22	1.96	0.47
1:G:198:PRO:HA	1:G:321:VAL:HG12	1.96	0.47
1:H:165:PHE:O	1:H:169:VAL:HG12	2.13	0.47
1:H:219:LEU:HD21	1:H:258:LEU:HD12	1.97	0.47
1:K:158:ALA:HB1	1:K:301:LEU:CD2	2.44	0.47
1:H:254:ASP:OD2	1:H:254:ASP:N	2.48	0.47
1:E:152:LEU:HD21	1:E:293:GLU:OE2	2.14	0.47
1:K:167:LYS:HG2	1:K:171:GLU:OE1	2.15	0.47

Continued on next page...

Continued from previous page...

Atom-1	Atom-2	Interatomic distance (Å)	Clash overlap (Å)
1:B:196:VAL:HG13	1:B:321:VAL:HG21	1.97	0.47
1:J:264:LEU:HD23	1:J:267:ILE:HD12	1.96	0.47
1:J:296:ASN:O	1:J:300:VAL:HG23	2.16	0.46
2:A:401:C2E:N11	1:B:237:PRO:O	2.43	0.46
1:C:242:VAL:HG12	1:C:244:PRO:HD2	1.97	0.46
1:L:165:PHE:O	1:L:169:VAL:HG12	2.16	0.46
1:L:193:VAL:CG1	1:L:315:VAL:HG22	2.45	0.46
1:L:219:LEU:HD21	1:L:258:LEU:HD12	1.97	0.46
1:F:181:LEU:HD23	1:F:186:ILE:HD13	1.97	0.46
1:H:129:LEU:O	1:H:133:VAL:HG23	2.16	0.46
1:D:307:ARG:O	1:D:307:ARG:HD3	2.16	0.46
1:L:305:ILE:HD13	1:L:315:VAL:HG12	1.97	0.46
1:G:79:ASP:CG	1:H:82:VAL:HG11	2.35	0.46
1:F:264:LEU:HD23	1:F:267:ILE:HD12	1.98	0.46
1:G:76:LYS:HB3	1:G:77:PRO:HD3	1.98	0.46
1:K:238:PHE:CD1	1:K:257:LEU:HD22	2.51	0.46
1:G:82:VAL:HG11	1:H:79:ASP:OD1	2.16	0.45
1:E:305:ILE:HD13	1:E:315:VAL:CG1	2.47	0.45
1:J:305:ILE:HD13	1:J:315:VAL:CG1	2.47	0.45
1:L:205:GLY:HA2	1:L:268:VAL:HG11	1.99	0.45
1:A:206:VAL:HG22	1:A:206:VAL:O	2.17	0.45
1:D:194:ASP:HB2	1:D:258:LEU:HD23	1.97	0.45
1:I:262:SER:OG	2:I:401:C2E:O21	2.24	0.45
1:K:305:ILE:HG21	1:K:315:VAL:O	2.16	0.45
1:I:179:VAL:HG23	1:I:186:ILE:HG22	1.99	0.45
1:K:302:LYS:CD	1:K:317:VAL:HG22	2.45	0.45
1:H:301:LEU:O	1:H:305:ILE:HD12	2.17	0.45
1:C:279:GLN:N	1:C:279:GLN:OE1	2.50	0.45
1:J:193:VAL:HG23	1:J:257:LEU:CB	2.47	0.45
1:L:178:CYS:SG	1:L:185:LYS:NZ	2.86	0.45
1:C:161:TYR:OH	1:C:259:ASP:OD2	2.17	0.44
1:K:222:ALA:HB2	1:K:240:PHE:CE2	2.52	0.44
1:H:265:SER:O	1:H:268:VAL:HG12	2.18	0.44
1:I:243:ASP:HB3	1:I:244:PRO:HD3	1.99	0.44
1:F:293:GLU:HA	1:F:293:GLU:OE1	2.18	0.44
1:K:237:PRO:O	2:K:401:C2E:N1	2.50	0.44
1:I:222:ALA:HB2	1:I:240:PHE:CE2	2.52	0.44
1:B:206:VAL:HG11	1:B:260:ILE:HG22	2.00	0.44
1:I:295:GLU:HA	1:I:295:GLU:OE1	2.18	0.44
1:I:238:PHE:CD1	1:I:257:LEU:HD22	2.53	0.44
1:K:219:LEU:HD22	1:K:258:LEU:HD12	2.00	0.44

Continued on next page...

Continued from previous page...

Atom-1	Atom-2	Interatomic distance (Å)	Clash overlap (Å)
1:G:219:LEU:HD21	1:G:258:LEU:HD12	1.99	0.44
2:A:401:C2E:H81	2:A:401:C2E:O5A	2.17	0.44
1:D:165:PHE:CE1	1:D:169:VAL:HG21	2.53	0.44
1:I:242:VAL:HG11	1:I:247:ALA:CB	2.48	0.44
1:E:195:VAL:HG23	1:E:195:VAL:O	2.18	0.44
1:K:243:ASP:HB3	1:K:244:PRO:HD3	2.00	0.43
1:A:152:LEU:HD21	1:A:293:GLU:OE2	2.17	0.43
1:G:255:ILE:HG22	1:G:257:LEU:HD12	1.99	0.43
1:H:213:TYR:CD2	1:H:260:ILE:HD11	2.53	0.43
1:C:195:VAL:HG23	1:C:195:VAL:O	2.18	0.43
1:B:165:PHE:CE1	1:B:169:VAL:HG21	2.54	0.43
1:K:254:ASP:OD1	1:K:255:ILE:N	2.51	0.43
1:J:190:SER:OG	1:J:254:ASP:OD1	2.36	0.43
1:A:289:LEU:O	1:A:293:GLU:HG2	2.18	0.43
1:F:254:ASP:OD1	1:F:255:ILE:N	2.52	0.43
1:A:195:VAL:HG21	1:A:301:LEU:HD23	2.01	0.43
1:A:195:VAL:HG23	1:A:195:VAL:O	2.18	0.43
1:H:193:VAL:HG13	1:H:315:VAL:HG13	2.00	0.43
1:E:206:VAL:HG22	1:E:206:VAL:O	2.19	0.43
1:E:289:LEU:O	1:E:293:GLU:HG2	2.19	0.43
1:F:243:ASP:HB3	1:F:244:PRO:HD3	2.01	0.43
1:G:243:ASP:HB3	1:G:244:PRO:HD3	2.00	0.43
1:I:179:VAL:HG23	1:I:186:ILE:CG2	2.48	0.43
1:K:196:VAL:HG13	1:K:321:VAL:HG21	2.01	0.43
1:B:152:LEU:HD23	1:B:293:GLU:HG3	2.01	0.42
1:G:237:PRO:O	2:G:401:C2E:N2	2.52	0.42
1:J:162:TYR:CE1	1:J:167:LYS:HB2	2.54	0.42
1:B:217:TYR:CB	1:B:219:LEU:HD13	2.45	0.42
1:J:147:SER:OG	1:J:300:VAL:HG22	2.19	0.42
1:K:275:LEU:HD12	1:K:289:LEU:HD12	2.00	0.42
1:I:202:ASP:OD1	1:I:203:ASP:N	2.52	0.42
1:A:194:ASP:HB2	1:A:258:LEU:HD23	2.01	0.42
1:C:169:VAL:O	1:C:173:ILE:HG12	2.19	0.42
1:J:193:VAL:CG1	1:J:315:VAL:HG22	2.49	0.42
1:L:264:LEU:HD23	1:L:267:ILE:HD12	2.01	0.42
2:C:401:C2E:N11	1:D:237:PRO:O	2.44	0.42
1:F:243:ASP:HB3	1:F:244:PRO:CD	2.49	0.42
1:K:152:LEU:HD23	1:K:293:GLU:HG3	2.02	0.42
1:K:188:VAL:HG11	1:K:191:PHE:HB3	2.02	0.42
1:K:264:LEU:HD23	1:K:267:ILE:HD12	2.01	0.42
2:G:401:C2E:H81	2:G:401:C2E:O5A	2.19	0.42

Continued on next page...

Continued from previous page...

Atom-1	Atom-2	Interatomic distance (Å)	Clash overlap (Å)
1:L:301:LEU:O	1:L:305:ILE:HG13	2.19	0.42
1:B:194:ASP:HB2	1:B:258:LEU:HD23	2.02	0.42
1:C:152:LEU:HD11	1:C:293:GLU:HG3	2.01	0.42
1:C:285:ASP:O	1:C:289:LEU:HD23	2.19	0.42
1:F:201:LEU:HD11	1:F:294:LEU:HD21	2.02	0.42
1:K:226:THR:OG1	1:L:221:LYS:NZ	2.41	0.42
1:G:316:ASN:C	1:G:316:ASN:ND2	2.73	0.42
1:J:188:VAL:HG13	1:J:255:ILE:HD12	2.02	0.42
1:J:251:SER:O	1:J:253:VAL:HG23	2.20	0.42
1:G:155:THR:HG23	1:G:156:ALA:N	2.35	0.42
2:C:401:C2E:O5A	2:C:401:C2E:H81	2.19	0.42
1:K:186:ILE:HG13	1:K:186:ILE:O	2.20	0.42
1:G:195:VAL:HG11	1:G:301:LEU:HD21	2.01	0.41
1:H:23:UNK:C	1:H:133:VAL:HG11	2.50	0.41
1:F:194:ASP:HB2	1:F:258:LEU:HD23	2.02	0.41
1:H:60:ILE:O	1:H:60:ILE:HG22	2.20	0.41
1:F:283:ASP:OD1	1:F:283:ASP:C	2.59	0.41
1:B:147:SER:OG	1:B:300:VAL:HG22	2.20	0.41
1:D:194:ASP:OD2	1:D:256:HIS:NE2	2.27	0.41
1:K:219:LEU:CD2	1:K:258:LEU:HD12	2.50	0.41
1:K:234:ARG:NH2	2:K:401:C2E:O6	2.54	0.41
1:J:301:LEU:O	1:J:305:ILE:HG13	2.20	0.41
1:C:195:VAL:HG21	1:C:301:LEU:HD23	2.03	0.41
1:G:82:VAL:HB	1:H:82:VAL:HG21	2.02	0.41
1:D:242:VAL:HG13	1:D:253:VAL:HG22	2.03	0.41
1:K:152:LEU:HD11	1:K:274:TYR:CD2	2.56	0.41
1:B:152:LEU:HD12	1:B:152:LEU:N	2.36	0.41
1:G:181:LEU:HD12	1:G:182:GLU:HG2	2.03	0.41
1:K:298:ALA:O	1:K:302:LYS:HG2	2.20	0.41
1:L:147:SER:OG	1:L:300:VAL:HG22	2.20	0.41
1:K:208:ASN:O	1:K:212:LEU:HD23	2.21	0.41
1:G:305:ILE:HG21	1:G:315:VAL:O	2.22	0.40
1:E:219:LEU:HD21	1:E:258:LEU:HD12	2.03	0.40
1:G:222:ALA:HB2	1:G:240:PHE:CE2	2.55	0.40
1:G:305:ILE:CD1	1:G:315:VAL:HG12	2.51	0.40
1:D:154:SER:HB3	1:D:293:GLU:OE1	2.21	0.40
1:F:242:VAL:HG13	1:F:253:VAL:CG2	2.50	0.40
1:G:307:ARG:HA	1:G:307:ARG:HD2	1.94	0.40
1:H:77:PRO:O	1:H:81:VAL:HG23	2.21	0.40
1:H:186:ILE:O	1:H:186:ILE:HG13	2.21	0.40
1:E:264:LEU:HD23	1:E:267:ILE:HD12	2.04	0.40

Continued on next page...

Continued from previous page...

Atom-1	Atom-2	Interatomic distance (Å)	Clash overlap (Å)
1:B:206:VAL:HG11	1:B:260:ILE:CG2	2.51	0.40
1:C:152:LEU:CD1	1:C:293:GLU:HG3	2.52	0.40
1:K:282:GLN:OE1	1:K:282:GLN:HA	2.22	0.40
1:L:289:LEU:O	1:L:293:GLU:HG2	2.21	0.40
1:B:181:LEU:O	1:B:182:GLU:HG2	2.22	0.40
1:C:172:GLU:OE2	1:C:224:THR:OG1	2.24	0.40

There are no symmetry-related clashes.

5.3 Torsion angles [i](#)

5.3.1 Protein backbone [i](#)

In the following table, the Percentiles column shows the percent Ramachandran outliers of the chain as a percentile score with respect to all PDB entries followed by that with respect to all EM entries.

The Analysed column shows the number of residues for which the backbone conformation was analysed, and the total number of residues.

Mol	Chain	Analysed	Favoured	Allowed	Outliers	Percentiles	
1	A	165/321 (51%)	159 (96%)	6 (4%)	0	100	100
1	B	175/321 (54%)	169 (97%)	6 (3%)	0	100	100
1	C	165/321 (51%)	161 (98%)	4 (2%)	0	100	100
1	D	175/321 (54%)	169 (97%)	6 (3%)	0	100	100
1	E	165/321 (51%)	161 (98%)	4 (2%)	0	100	100
1	F	175/321 (54%)	169 (97%)	6 (3%)	0	100	100
1	G	180/321 (56%)	176 (98%)	4 (2%)	0	100	100
1	H	225/321 (70%)	215 (96%)	10 (4%)	0	100	100
1	I	168/321 (52%)	163 (97%)	5 (3%)	0	100	100
1	J	175/321 (54%)	169 (97%)	6 (3%)	0	100	100
1	K	168/321 (52%)	164 (98%)	4 (2%)	0	100	100
1	L	175/321 (54%)	168 (96%)	7 (4%)	0	100	100
All	All	2111/3852 (55%)	2043 (97%)	68 (3%)	0	100	100

There are no Ramachandran outliers to report.

5.3.2 Protein sidechains ⓘ

In the following table, the Percentiles column shows the percent sidechain outliers of the chain as a percentile score with respect to all PDB entries followed by that with respect to all EM entries.

The Analysed column shows the number of residues for which the sidechain conformation was analysed, and the total number of residues.

Mol	Chain	Analysed	Rotameric	Outliers	Percentiles	
1	A	152/234 (65%)	151 (99%)	1 (1%)	84	90
1	B	157/234 (67%)	157 (100%)	0	100	100
1	C	152/234 (65%)	152 (100%)	0	100	100
1	D	157/234 (67%)	156 (99%)	1 (1%)	86	91
1	E	152/234 (65%)	152 (100%)	0	100	100
1	F	157/234 (67%)	157 (100%)	0	100	100
1	G	166/234 (71%)	165 (99%)	1 (1%)	86	91
1	H	207/234 (88%)	207 (100%)	0	100	100
1	I	153/234 (65%)	153 (100%)	0	100	100
1	J	157/234 (67%)	157 (100%)	0	100	100
1	K	153/234 (65%)	153 (100%)	0	100	100
1	L	157/234 (67%)	157 (100%)	0	100	100
All	All	1920/2808 (68%)	1917 (100%)	3 (0%)	93	97

All (3) residues with a non-rotameric sidechain are listed below:

Mol	Chain	Res	Type
1	A	184	LYS
1	G	316	ASN
1	D	307	ARG

Sometimes sidechains can be flipped to improve hydrogen bonding and reduce clashes. All (4) such sidechains are listed below:

Mol	Chain	Res	Type
1	G	282	GLN
1	C	308	ASN
1	D	214	ASN
1	F	239	HIS

5.3.3 RNA ⓘ

There are no RNA molecules in this entry.

5.4 Non-standard residues in protein, DNA, RNA chains ⓘ

There are no non-standard protein/DNA/RNA residues in this entry.

5.5 Carbohydrates ⓘ

There are no monosaccharides in this entry.

5.6 Ligand geometry ⓘ

6 ligands are modelled in this entry.

In the following table, the Counts columns list the number of bonds (or angles) for which Mogul statistics could be retrieved, the number of bonds (or angles) that are observed in the model and the number of bonds (or angles) that are defined in the Chemical Component Dictionary. The Link column lists molecule types, if any, to which the group is linked. The Z score for a bond length (or angle) is the number of standard deviations the observed value is removed from the expected value. A bond length (or angle) with $|Z| > 2$ is considered an outlier worth inspection. RMSZ is the root-mean-square of all Z scores of the bond lengths (or angles).

Mol	Type	Chain	Res	Link	Bond lengths			Bond angles		
					Counts	RMSZ	# $ Z > 2$	Counts	RMSZ	# $ Z > 2$
2	C2E	G	401	-	44,52,52	4.67	19 (43%)	52,82,82	1.48	9 (17%)
2	C2E	F	401	-	44,52,52	4.67	19 (43%)	52,82,82	1.49	9 (17%)
2	C2E	A	401	-	44,52,52	4.67	19 (43%)	52,82,82	1.48	9 (17%)
2	C2E	K	401	-	44,52,52	4.67	19 (43%)	52,82,82	1.49	9 (17%)
2	C2E	C	401	-	44,52,52	4.67	19 (43%)	52,82,82	1.49	9 (17%)
2	C2E	I	401	-	44,52,52	4.67	19 (43%)	52,82,82	1.49	9 (17%)

In the following table, the Chirals column lists the number of chiral outliers, the number of chiral centers analysed, the number of these observed in the model and the number defined in the Chemical Component Dictionary. Similar counts are reported in the Torsion and Rings columns. '-' means no outliers of that kind were identified.

Mol	Type	Chain	Res	Link	Chirals	Torsions	Rings
2	C2E	G	401	-	-	3/22/62/62	0/6/7/7
2	C2E	F	401	-	-	4/22/62/62	0/6/7/7

Continued on next page...

Continued from previous page...

Mol	Type	Chain	Res	Link	Chirals	Torsions	Rings
2	C2E	A	401	-	-	4/22/62/62	0/6/7/7
2	C2E	K	401	-	-	7/22/62/62	0/6/7/7
2	C2E	C	401	-	-	3/22/62/62	0/6/7/7
2	C2E	I	401	-	-	3/22/62/62	0/6/7/7

All (114) bond length outliers are listed below:

Mol	Chain	Res	Type	Atoms	Z	Observed(Å)	Ideal(Å)
2	A	401	C2E	C2'-C1'	-15.62	1.30	1.53
2	G	401	C2E	C2'-C1'	-15.59	1.30	1.53
2	C	401	C2E	C2'-C1'	-15.58	1.30	1.53
2	I	401	C2E	C2'-C1'	-15.51	1.30	1.53
2	K	401	C2E	C2'-C1'	-15.50	1.30	1.53
2	F	401	C2E	C2'-C1'	-15.43	1.30	1.53
2	K	401	C2E	C2A-C3A	-11.19	1.28	1.52
2	G	401	C2E	C2A-C3A	-11.16	1.28	1.52
2	F	401	C2E	O4'-C1'	11.13	1.56	1.41
2	F	401	C2E	C2A-C3A	-11.13	1.28	1.52
2	C	401	C2E	C2A-C3A	-11.10	1.28	1.52
2	A	401	C2E	O4'-C1'	11.09	1.56	1.41
2	A	401	C2E	C2A-C3A	-11.08	1.28	1.52
2	C	401	C2E	O4'-C1'	11.07	1.56	1.41
2	I	401	C2E	O4'-C1'	11.07	1.56	1.41
2	I	401	C2E	C2A-C3A	-11.05	1.28	1.52
2	G	401	C2E	O4'-C1'	11.04	1.56	1.41
2	K	401	C2E	O4'-C1'	11.03	1.56	1.41
2	I	401	C2E	O4A-C1A	9.81	1.54	1.41
2	G	401	C2E	O4A-C1A	9.77	1.54	1.41
2	F	401	C2E	O4A-C1A	9.77	1.54	1.41
2	C	401	C2E	O4A-C1A	9.77	1.54	1.41
2	K	401	C2E	O4A-C1A	9.76	1.54	1.41
2	A	401	C2E	O4A-C1A	9.73	1.54	1.41
2	G	401	C2E	C3'-C4'	-9.23	1.28	1.52
2	A	401	C2E	C3'-C4'	-9.18	1.28	1.52
2	F	401	C2E	C3'-C4'	-9.18	1.28	1.52
2	K	401	C2E	C3'-C4'	-9.18	1.28	1.52
2	I	401	C2E	C3'-C4'	-9.12	1.28	1.52
2	C	401	C2E	C3'-C4'	-9.12	1.28	1.52
2	I	401	C2E	C2'-C3'	6.97	1.68	1.52
2	C	401	C2E	C2'-C3'	6.89	1.68	1.52
2	K	401	C2E	C2'-C3'	6.89	1.68	1.52

Continued on next page...

Continued from previous page...

Mol	Chain	Res	Type	Atoms	Z	Observed(Å)	Ideal(Å)
2	G	401	C2E	C2'-C3'	6.85	1.68	1.52
2	F	401	C2E	C2'-C3'	6.84	1.68	1.52
2	A	401	C2E	C2'-C3'	6.84	1.68	1.52
2	G	401	C2E	O4A-C4A	-6.81	1.29	1.45
2	C	401	C2E	O4A-C4A	-6.79	1.29	1.45
2	I	401	C2E	O4A-C4A	-6.77	1.29	1.45
2	A	401	C2E	O4A-C4A	-6.77	1.29	1.45
2	F	401	C2E	O4A-C4A	-6.75	1.29	1.45
2	K	401	C2E	O4A-C4A	-6.70	1.30	1.45
2	F	401	C2E	O4'-C4'	6.55	1.59	1.45
2	K	401	C2E	O4'-C4'	6.48	1.59	1.45
2	A	401	C2E	O4'-C4'	6.48	1.59	1.45
2	I	401	C2E	O4'-C4'	6.47	1.59	1.45
2	C	401	C2E	O4'-C4'	6.45	1.59	1.45
2	G	401	C2E	O4'-C4'	6.40	1.59	1.45
2	F	401	C2E	C2-N3	5.28	1.46	1.33
2	I	401	C2E	C2-N3	5.27	1.46	1.33
2	K	401	C2E	C2-N3	5.24	1.45	1.33
2	G	401	C2E	C2-N3	5.23	1.45	1.33
2	A	401	C2E	C2-N3	5.22	1.45	1.33
2	C	401	C2E	C2-N3	5.14	1.45	1.33
2	I	401	C2E	C21-N31	4.90	1.45	1.33
2	G	401	C2E	C21-N31	4.88	1.45	1.33
2	C	401	C2E	C21-N31	4.88	1.45	1.33
2	F	401	C2E	C21-N31	4.85	1.45	1.33
2	K	401	C2E	C21-N31	4.83	1.44	1.33
2	A	401	C2E	C21-N31	4.81	1.44	1.33
2	F	401	C2E	C3A-C4A	4.36	1.64	1.52
2	K	401	C2E	C3A-C4A	4.35	1.64	1.52
2	C	401	C2E	C3A-C4A	4.34	1.64	1.52
2	A	401	C2E	C3A-C4A	4.33	1.64	1.52
2	I	401	C2E	C3A-C4A	4.32	1.64	1.52
2	G	401	C2E	C3A-C4A	4.29	1.64	1.52
2	K	401	C2E	C4-N3	3.30	1.45	1.37
2	F	401	C2E	C4-N3	3.30	1.45	1.37
2	C	401	C2E	C41-N31	3.29	1.45	1.37
2	I	401	C2E	C4-N3	3.29	1.45	1.37
2	F	401	C2E	C41-N31	3.29	1.45	1.37
2	G	401	C2E	C41-N31	3.28	1.45	1.37
2	C	401	C2E	O2A-C2A	3.28	1.50	1.43
2	A	401	C2E	C41-N31	3.27	1.45	1.37
2	K	401	C2E	C41-N31	3.26	1.45	1.37

Continued on next page...

Continued from previous page...

Mol	Chain	Res	Type	Atoms	Z	Observed(Å)	Ideal(Å)
2	F	401	C2E	O2A-C2A	3.25	1.50	1.43
2	I	401	C2E	C41-N31	3.25	1.45	1.37
2	A	401	C2E	O2A-C2A	3.25	1.50	1.43
2	I	401	C2E	O2A-C2A	3.24	1.50	1.43
2	G	401	C2E	O2A-C2A	3.24	1.50	1.43
2	A	401	C2E	C4-N3	3.23	1.45	1.37
2	K	401	C2E	O2A-C2A	3.23	1.50	1.43
2	C	401	C2E	C4-N3	3.22	1.45	1.37
2	G	401	C2E	C4-N3	3.22	1.45	1.37
2	F	401	C2E	C2-N2	2.82	1.40	1.34
2	I	401	C2E	C2-N2	2.81	1.40	1.34
2	G	401	C2E	C2-N2	2.81	1.40	1.34
2	K	401	C2E	C2-N2	2.81	1.40	1.34
2	A	401	C2E	C2-N2	2.79	1.40	1.34
2	C	401	C2E	C2-N2	2.77	1.40	1.34
2	C	401	C2E	C2-N1	2.76	1.44	1.37
2	F	401	C2E	C2-N1	2.75	1.44	1.37
2	K	401	C2E	C2-N1	2.74	1.44	1.37
2	I	401	C2E	C2-N1	2.72	1.44	1.37
2	I	401	C2E	C61-N11	2.71	1.41	1.37
2	A	401	C2E	C2-N1	2.70	1.44	1.37
2	G	401	C2E	C2-N1	2.70	1.44	1.37
2	K	401	C2E	C61-N11	2.68	1.41	1.37
2	C	401	C2E	C61-N11	2.66	1.41	1.37
2	A	401	C2E	C61-N11	2.65	1.41	1.37
2	F	401	C2E	C61-N11	2.63	1.41	1.37
2	G	401	C2E	C61-N11	2.62	1.41	1.37
2	I	401	C2E	C21-N11	2.52	1.43	1.37
2	G	401	C2E	C21-N11	2.51	1.43	1.37
2	K	401	C2E	C21-N11	2.50	1.43	1.37
2	A	401	C2E	C21-N11	2.46	1.43	1.37
2	F	401	C2E	C21-N11	2.44	1.43	1.37
2	C	401	C2E	C21-N11	2.39	1.43	1.37
2	I	401	C2E	C21-N21	2.32	1.39	1.34
2	F	401	C2E	C21-N21	2.28	1.39	1.34
2	C	401	C2E	C21-N21	2.27	1.39	1.34
2	K	401	C2E	C21-N21	2.25	1.39	1.34
2	A	401	C2E	C21-N21	2.23	1.39	1.34
2	G	401	C2E	C21-N21	2.22	1.39	1.34

All (54) bond angle outliers are listed below:

Mol	Chain	Res	Type	Atoms	Z	Observed(°)	Ideal(°)
2	K	401	C2E	C5-C6-N1	3.56	120.24	113.95
2	G	401	C2E	C5-C6-N1	3.53	120.19	113.95
2	I	401	C2E	C5-C6-N1	3.50	120.14	113.95
2	F	401	C2E	C5-C6-N1	3.48	120.09	113.95
2	A	401	C2E	C5-C6-N1	3.47	120.09	113.95
2	C	401	C2E	C5-C6-N1	3.47	120.08	113.95
2	F	401	C2E	C51-C61-N11	3.45	120.05	113.95
2	C	401	C2E	C51-C61-N11	3.45	120.03	113.95
2	A	401	C2E	C51-C61-N11	3.42	119.99	113.95
2	G	401	C2E	C51-C61-N11	3.40	119.95	113.95
2	I	401	C2E	C51-C61-N11	3.38	119.92	113.95
2	K	401	C2E	C51-C61-N11	3.35	119.88	113.95
2	A	401	C2E	C21-N11-C61	-2.95	119.66	125.10
2	G	401	C2E	C21-N11-C61	-2.93	119.70	125.10
2	F	401	C2E	C21-N11-C61	-2.93	119.70	125.10
2	K	401	C2E	C2-N1-C6	-2.93	119.70	125.10
2	C	401	C2E	C21-N11-C61	-2.92	119.71	125.10
2	A	401	C2E	C2-N1-C6	-2.91	119.74	125.10
2	I	401	C2E	C21-N11-C61	-2.91	119.75	125.10
2	C	401	C2E	C8-N7-C5	2.91	108.53	102.99
2	G	401	C2E	C2-N1-C6	-2.91	119.75	125.10
2	G	401	C2E	C8-N7-C5	2.90	108.52	102.99
2	K	401	C2E	C21-N11-C61	-2.90	119.75	125.10
2	F	401	C2E	C8-N7-C5	2.90	108.51	102.99
2	A	401	C2E	C8-N7-C5	2.90	108.51	102.99
2	K	401	C2E	C8-N7-C5	2.90	108.50	102.99
2	F	401	C2E	C2-N1-C6	-2.89	119.77	125.10
2	I	401	C2E	C2-N1-C6	-2.89	119.78	125.10
2	C	401	C2E	C2-N1-C6	-2.89	119.78	125.10
2	I	401	C2E	C8-N7-C5	2.84	108.39	102.99
2	I	401	C2E	C3'-C2'-C1'	2.62	105.69	99.89
2	I	401	C2E	C81-N71-C51	2.56	107.87	102.99
2	K	401	C2E	C81-N71-C51	2.56	107.87	102.99
2	F	401	C2E	C81-N71-C51	2.56	107.86	102.99
2	K	401	C2E	C3'-C2'-C1'	2.54	105.52	99.89
2	G	401	C2E	C81-N71-C51	2.54	107.82	102.99
2	C	401	C2E	C81-N71-C51	2.54	107.82	102.99
2	A	401	C2E	C81-N71-C51	2.51	107.77	102.99
2	F	401	C2E	C3'-C2'-C1'	2.43	105.28	99.89
2	C	401	C2E	O61-C61-C51	-2.42	119.65	124.37
2	K	401	C2E	O6-C6-C5	-2.41	119.66	124.37
2	C	401	C2E	O6-C6-C5	-2.39	119.70	124.37
2	A	401	C2E	O61-C61-C51	-2.37	119.75	124.37

Continued on next page...

Continued from previous page...

Mol	Chain	Res	Type	Atoms	Z	Observed(°)	Ideal(°)
2	G	401	C2E	O6-C6-C5	-2.36	119.77	124.37
2	I	401	C2E	O6-C6-C5	-2.34	119.80	124.37
2	G	401	C2E	C3'-C2'-C1'	2.33	105.06	99.89
2	F	401	C2E	O61-C61-C51	-2.32	119.85	124.37
2	A	401	C2E	C3'-C2'-C1'	2.30	104.99	99.89
2	G	401	C2E	O61-C61-C51	-2.29	119.89	124.37
2	F	401	C2E	O6-C6-C5	-2.29	119.90	124.37
2	C	401	C2E	C3'-C2'-C1'	2.28	104.94	99.89
2	A	401	C2E	O6-C6-C5	-2.28	119.92	124.37
2	K	401	C2E	O61-C61-C51	-2.28	119.92	124.37
2	I	401	C2E	O61-C61-C51	-2.26	119.96	124.37

There are no chirality outliers.

All (24) torsion outliers are listed below:

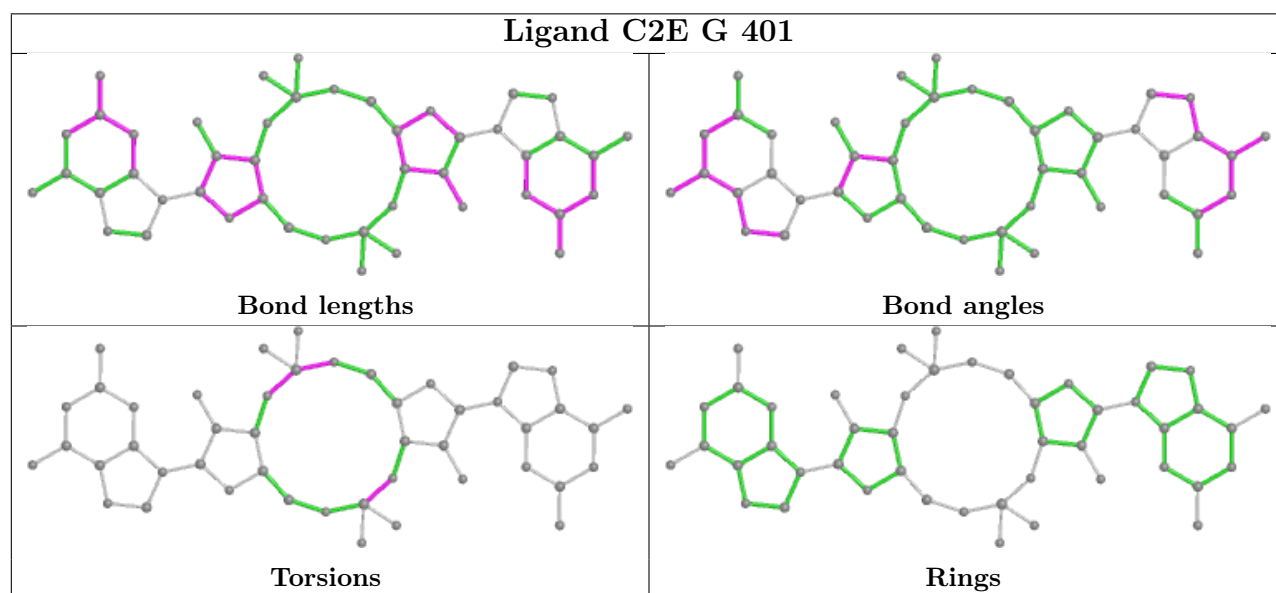
Mol	Chain	Res	Type	Atoms
2	A	401	C2E	C5A-O5A-P11-O11
2	K	401	C2E	C3'-O3'-P11-O5A
2	K	401	C2E	C5A-O5A-P11-O21
2	K	401	C2E	C5A-O5A-P11-O11
2	C	401	C2E	C3'-O3'-P11-O5A
2	F	401	C2E	C3'-O3'-P11-O5A
2	K	401	C2E	C5A-O5A-P11-O3'
2	A	401	C2E	C3'-O3'-P11-O5A
2	G	401	C2E	C3A-O3A-P1-O5'
2	K	401	C2E	C3A-O3A-P1-O5'
2	C	401	C2E	C3A-O3A-P1-O5'
2	I	401	C2E	C3A-O3A-P1-O5'
2	K	401	C2E	C3'-O3'-P11-O11
2	A	401	C2E	C3A-O3A-P1-O5'
2	G	401	C2E	C3'-O3'-P11-O5A
2	I	401	C2E	C3'-O3'-P11-O5A
2	A	401	C2E	C5A-O5A-P11-O21
2	C	401	C2E	C5A-O5A-P11-O21
2	F	401	C2E	C5A-O5A-P11-O21
2	F	401	C2E	C5A-O5A-P11-O11
2	I	401	C2E	O4A-C4A-C5A-O5A
2	F	401	C2E	C3A-O3A-P1-O5'
2	K	401	C2E	C3'-O3'-P11-O21
2	G	401	C2E	C5A-O5A-P11-O21

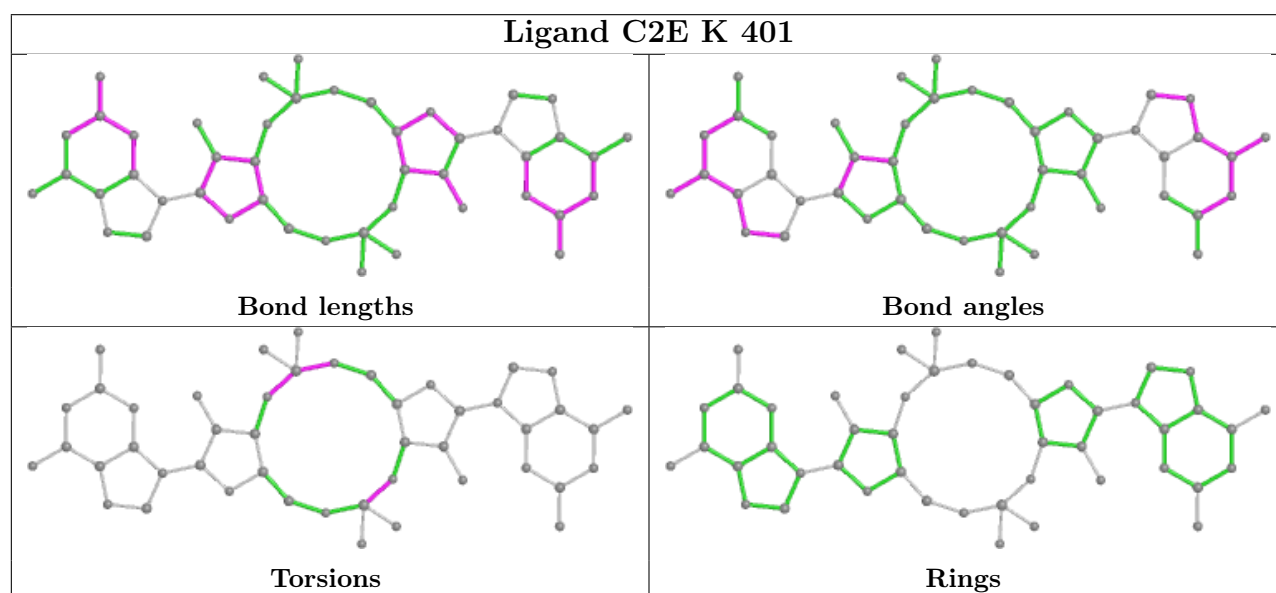
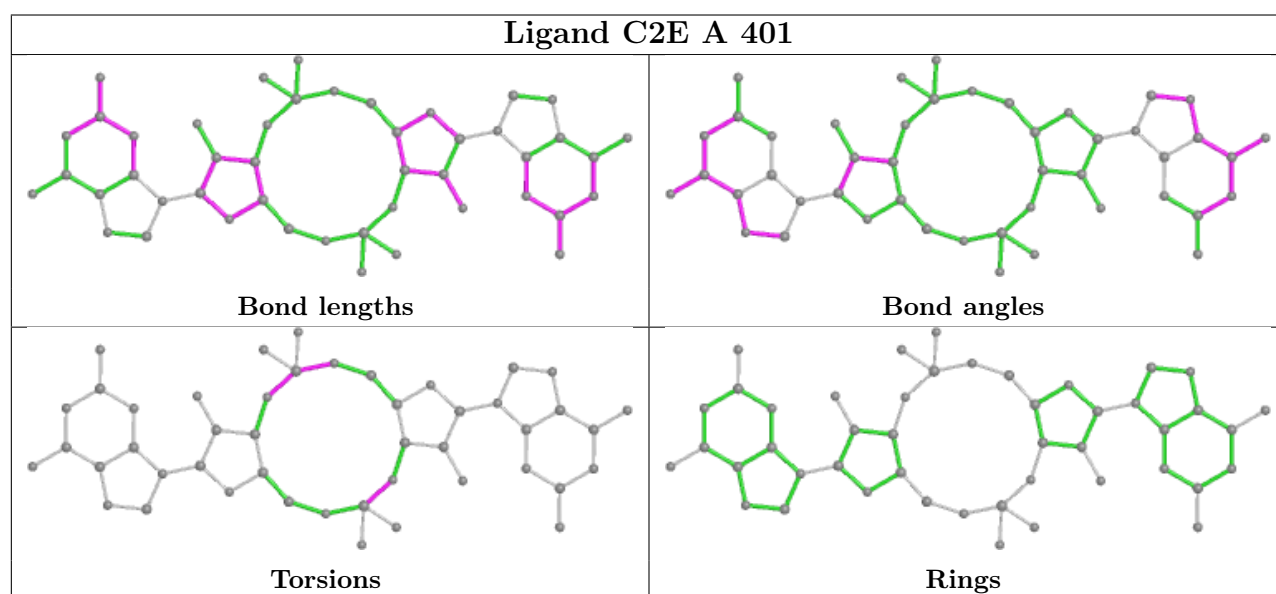
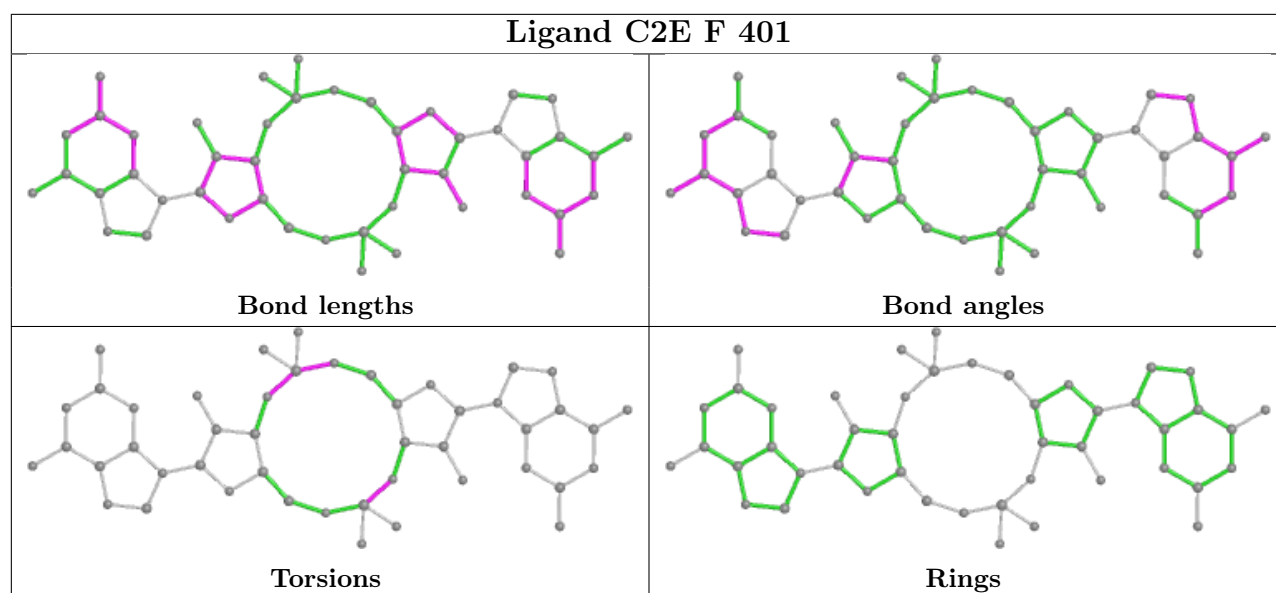
There are no ring outliers.

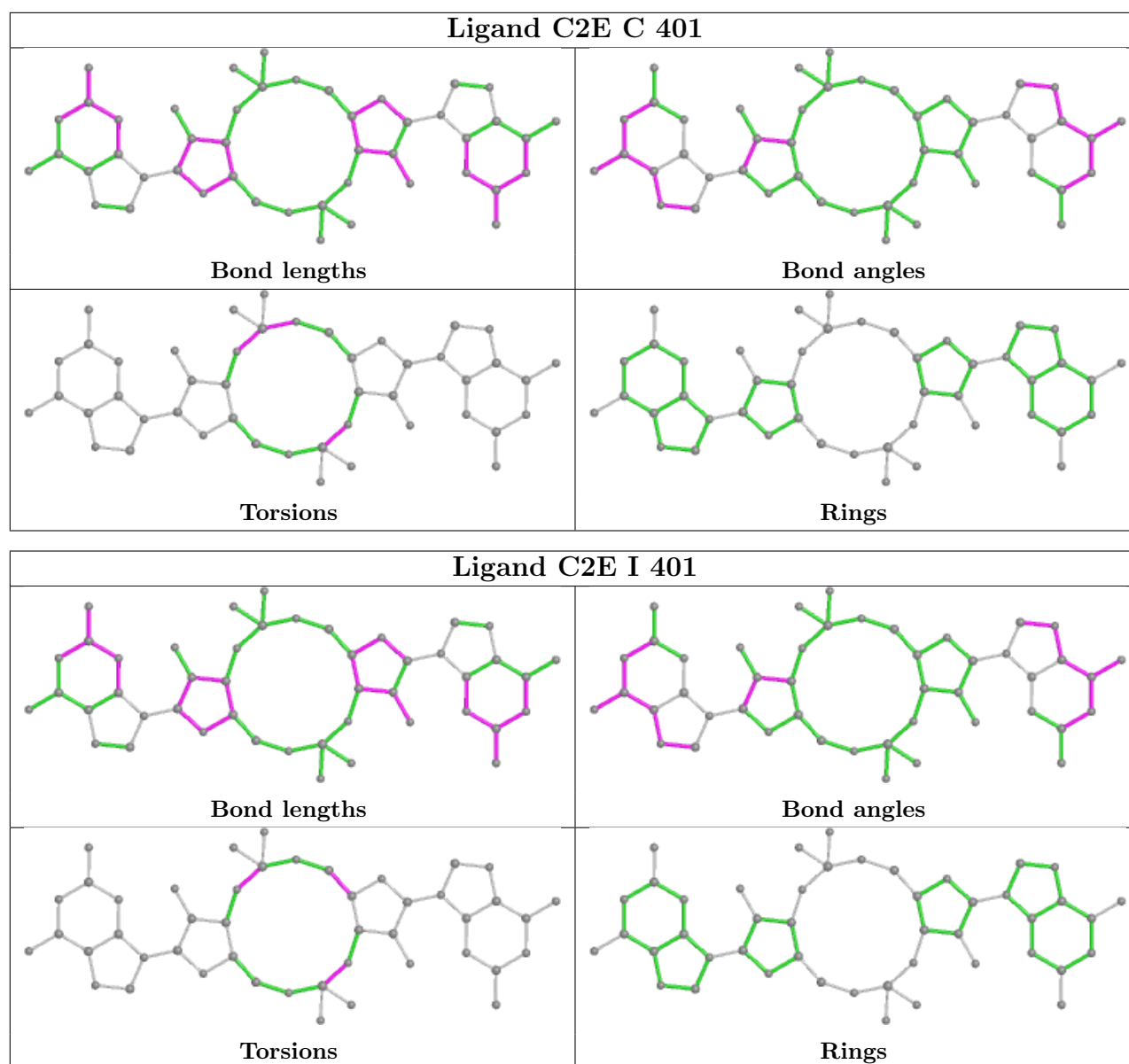
6 monomers are involved in 15 short contacts:

Mol	Chain	Res	Type	Clashes	Symm-Clashes
2	G	401	C2E	4	0
2	F	401	C2E	2	0
2	A	401	C2E	2	0
2	K	401	C2E	2	0
2	C	401	C2E	3	0
2	I	401	C2E	2	0

The following is a two-dimensional graphical depiction of Mogul quality analysis of bond lengths, bond angles, torsion angles, and ring geometry for all instances of the Ligand of Interest. In addition, ligands with molecular weight > 250 and outliers as shown on the validation Tables will also be included. For torsion angles, if less than 5% of the Mogul distribution of torsion angles is within 10 degrees of the torsion angle in question, then that torsion angle is considered an outlier. Any bond that is central to one or more torsion angles identified as an outlier by Mogul will be highlighted in the graph. For rings, the root-mean-square deviation (RMSD) between the ring in question and similar rings identified by Mogul is calculated over all ring torsion angles. If the average RMSD is greater than 60 degrees and the minimal RMSD between the ring in question and any Mogul-identified rings is also greater than 60 degrees, then that ring is considered an outlier. The outliers are highlighted in purple. The color gray indicates Mogul did not find sufficient equivalents in the CSD to analyse the geometry.







5.7 Other polymers [i](#)

There are no such residues in this entry.

5.8 Polymer linkage issues [i](#)

The following chains have linkage breaks:

Mol	Chain	Number of breaks
1	G	5
1	H	4

All chain breaks are listed below:

Model	Chain	Residue-1	Atom-1	Residue-2	Atom-2	Distance (Å)
1	H	33:UNK	C	44:UNK	N	11.77
1	G	33:UNK	C	44:UNK	N	11.26
1	H	51:UNK	C	58:ILE	N	10.56
1	G	102:UNK	C	132:UNK	N	10.36
1	H	23:UNK	C	28:UNK	N	10.11
1	G	23:UNK	C	28:UNK	N	9.29
1	G	53:UNK	C	56:UNK	N	7.06
1	G	9:UNK	C	13:UNK	N	6.35
1	H	10:UNK	C	14:UNK	N	5.47

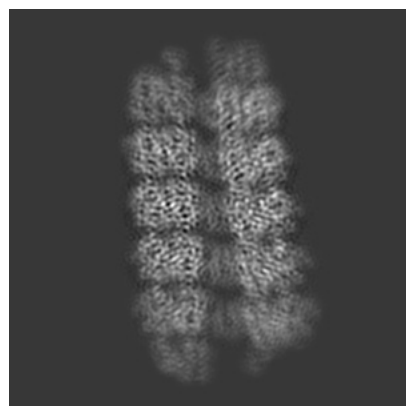
6 Map visualisation [i](#)

This section contains visualisations of the EMDB entry EMD-26617. These allow visual inspection of the internal detail of the map and identification of artifacts.

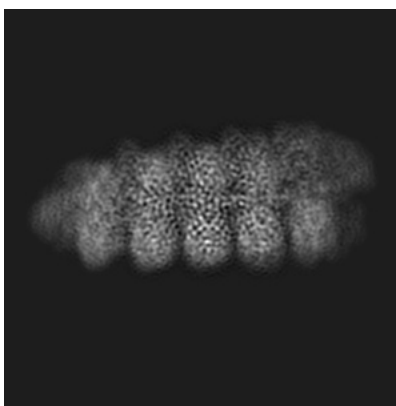
Images derived from a raw map, generated by summing the deposited half-maps, are presented below the corresponding image components of the primary map to allow further visual inspection and comparison with those of the primary map.

6.1 Orthogonal projections [i](#)

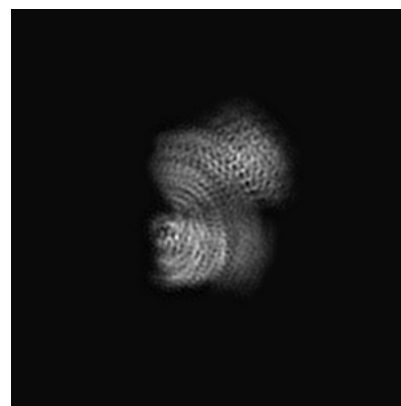
6.1.1 Primary map



X

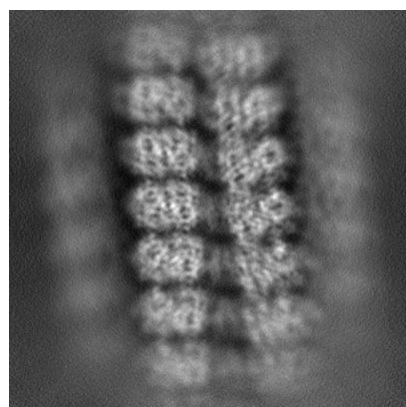


Y

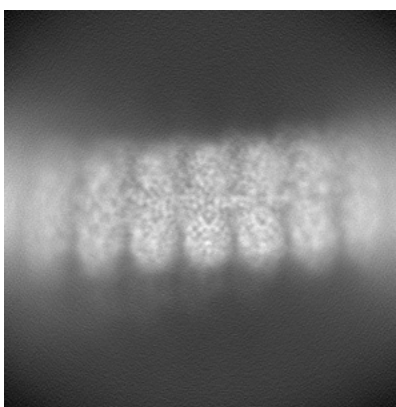


Z

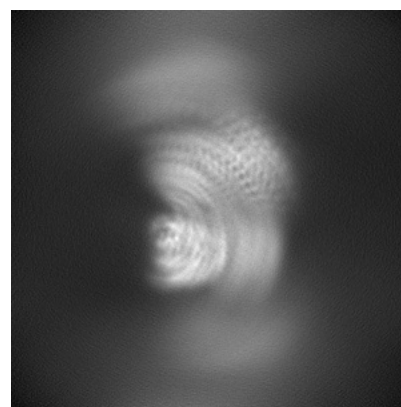
6.1.2 Raw map



X



Y

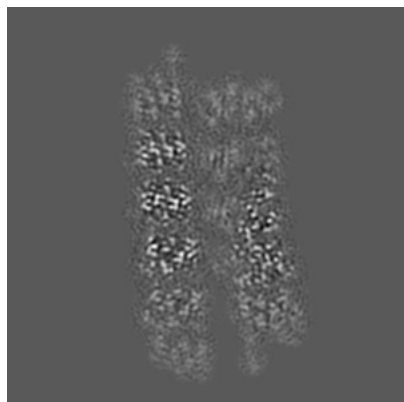


Z

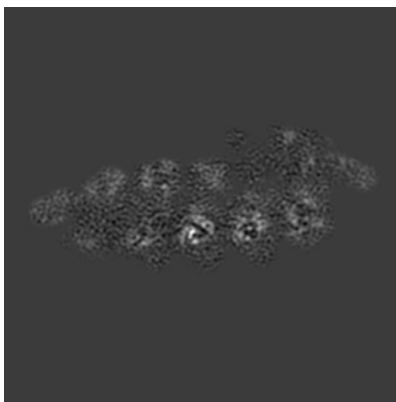
The images above show the map projected in three orthogonal directions.

6.2 Central slices [i](#)

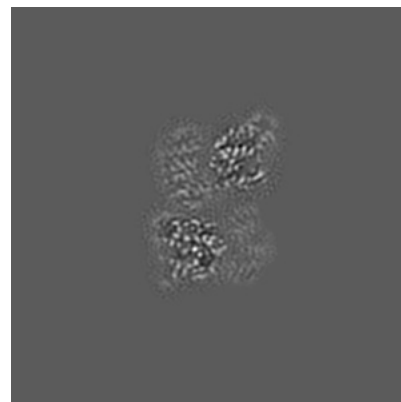
6.2.1 Primary map



X Index: 160

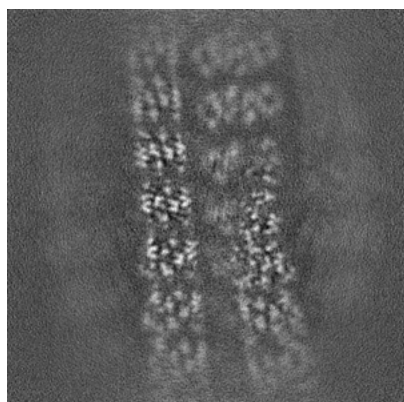


Y Index: 160

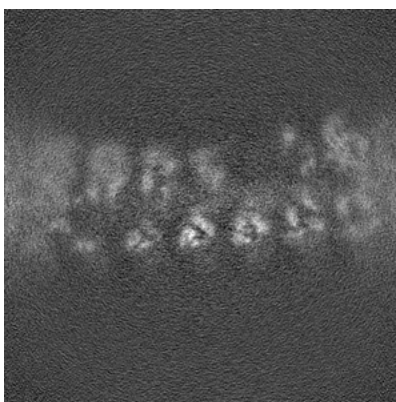


Z Index: 160

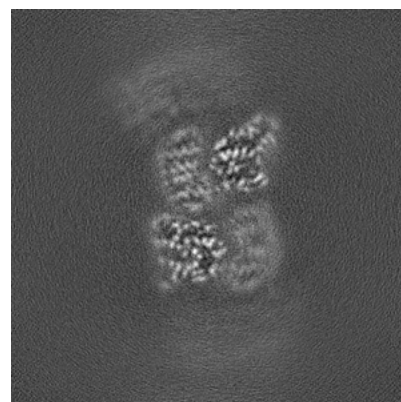
6.2.2 Raw map



X Index: 160



Y Index: 160

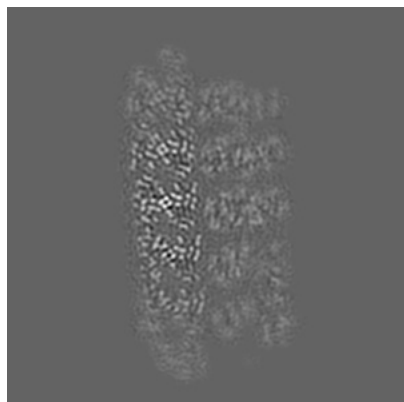


Z Index: 160

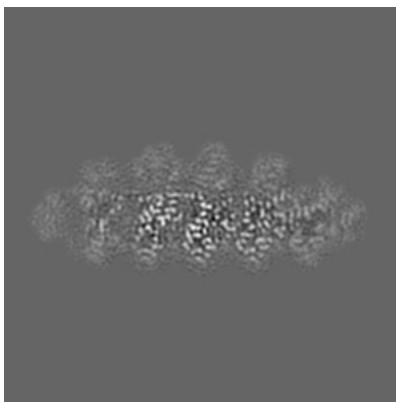
The images above show central slices of the map in three orthogonal directions.

6.3 Largest variance slices [i](#)

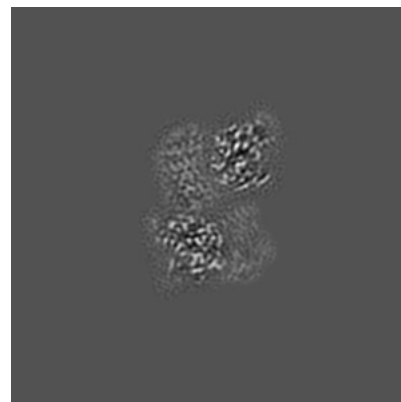
6.3.1 Primary map



X Index: 146

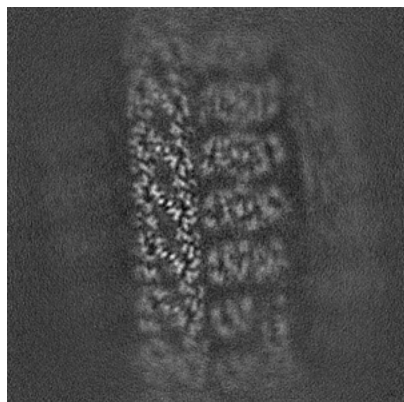


Y Index: 135

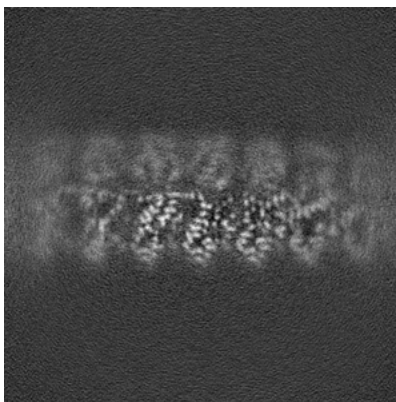


Z Index: 158

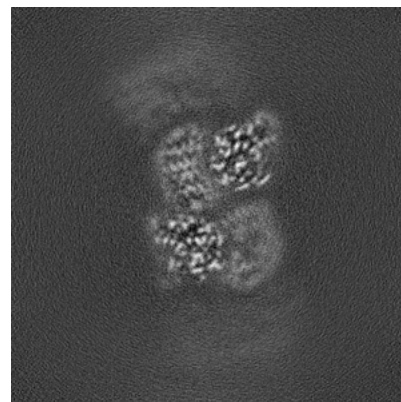
6.3.2 Raw map



X Index: 143



Y Index: 135

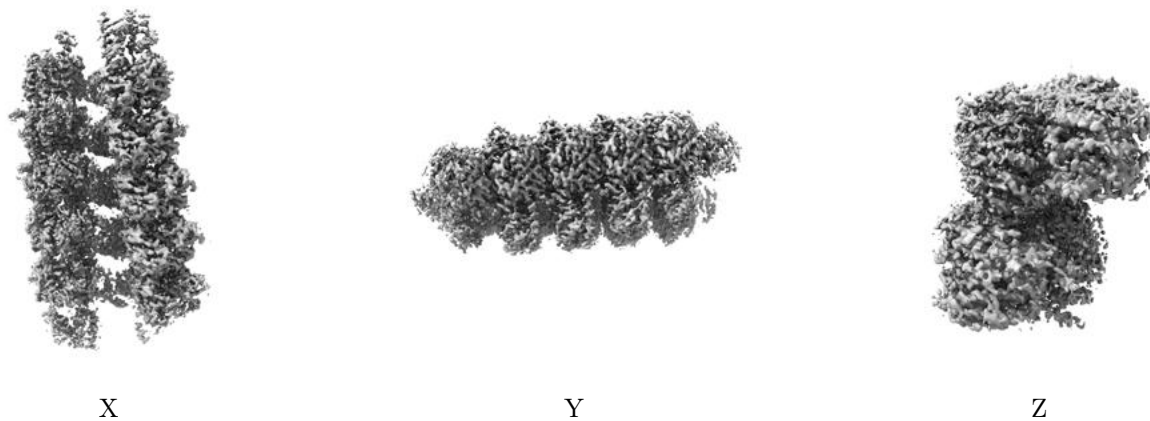


Z Index: 158

The images above show the largest variance slices of the map in three orthogonal directions.

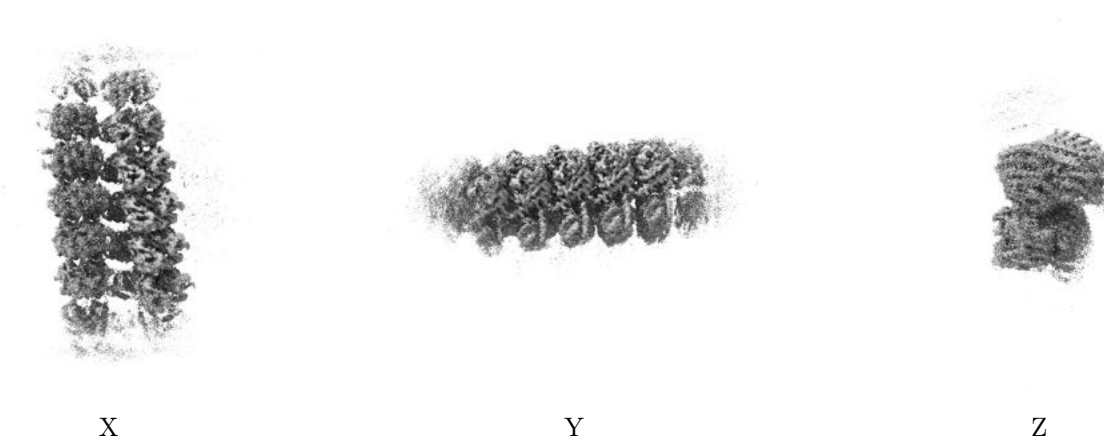
6.4 Orthogonal surface views [i](#)

6.4.1 Primary map



The images above show the 3D surface view of the map at the recommended contour level 0.25. These images, in conjunction with the slice images, may facilitate assessment of whether an appropriate contour level has been provided.

6.4.2 Raw map



These images show the 3D surface of the raw map. The raw map's contour level was selected so that its surface encloses the same volume as the primary map does at its recommended contour level.

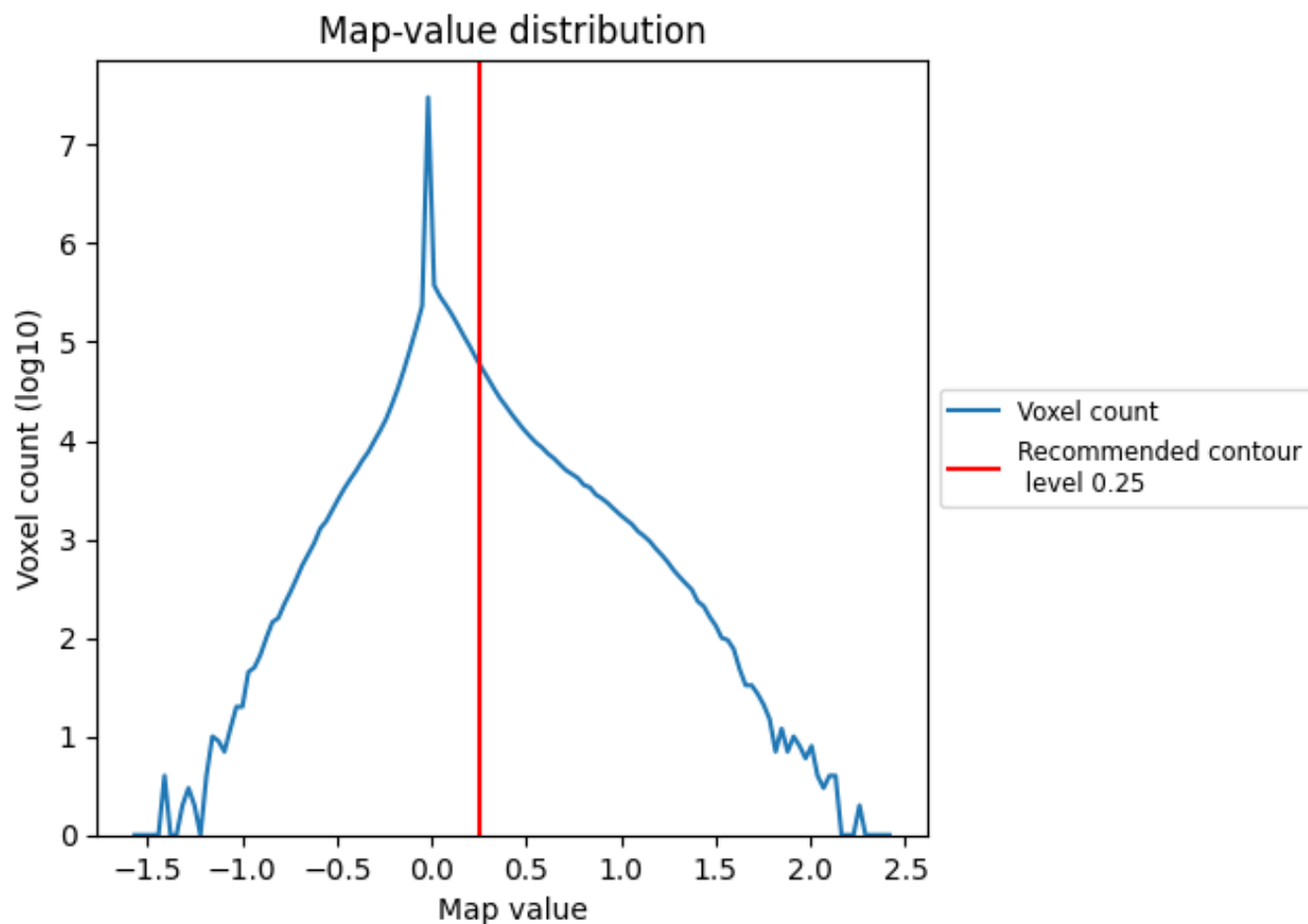
6.5 Mask visualisation [i](#)

This section was not generated. No masks/segmentation were deposited.

7 Map analysis [i](#)

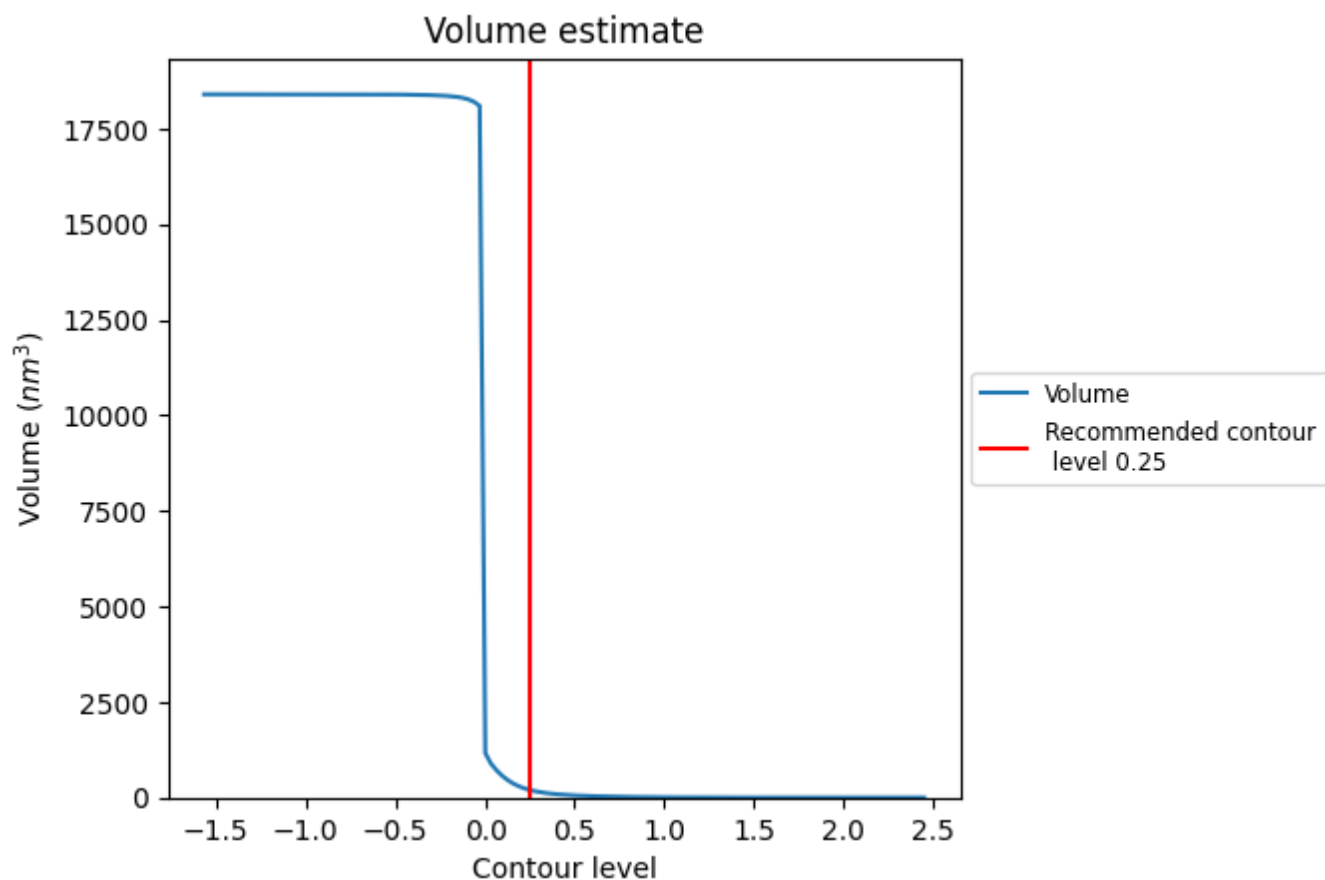
This section contains the results of statistical analysis of the map.

7.1 Map-value distribution [i](#)



The map-value distribution is plotted in 128 intervals along the x-axis. The y-axis is logarithmic. A spike in this graph at zero usually indicates that the volume has been masked.

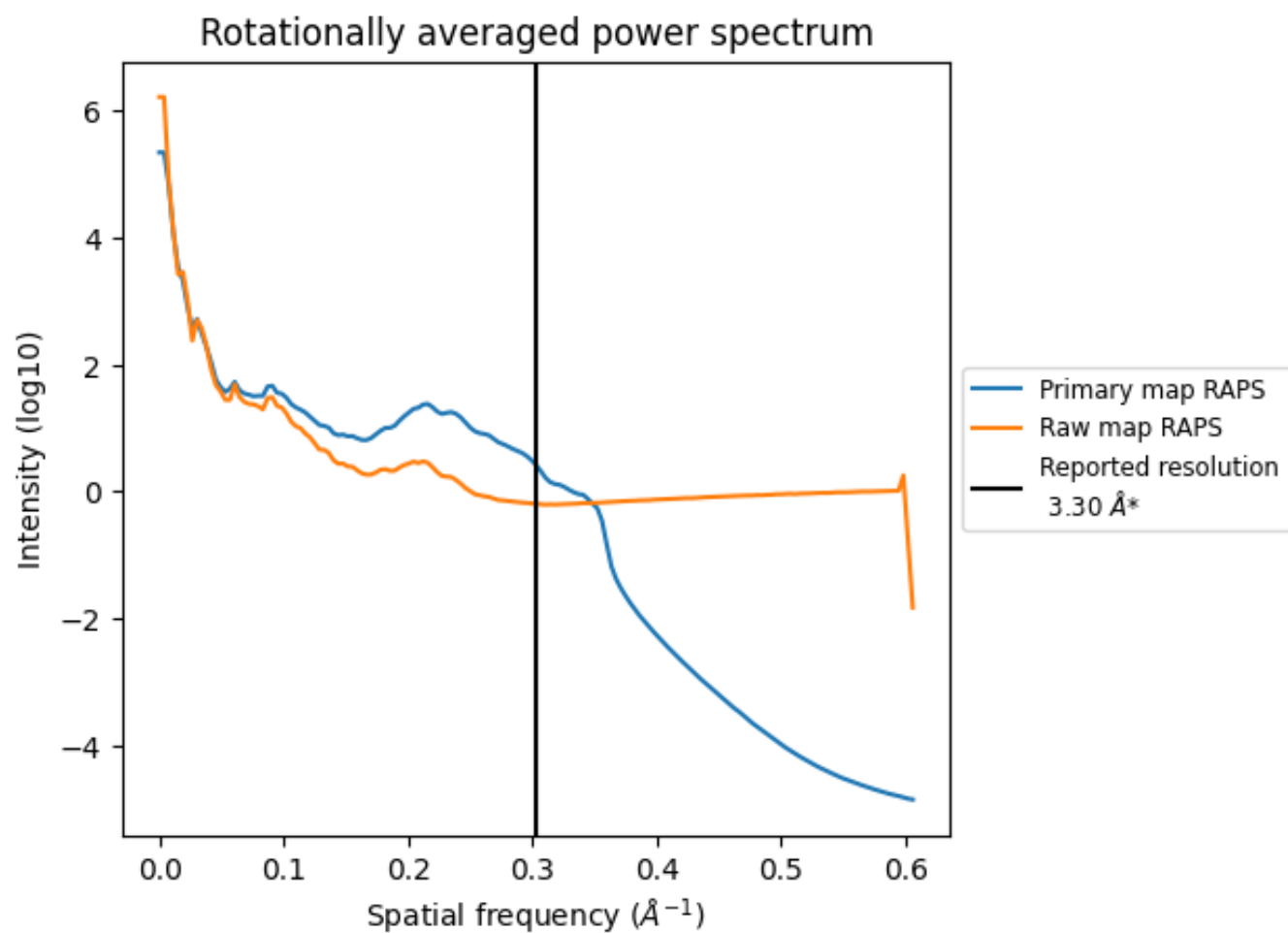
7.2 Volume estimate [i](#)



The volume at the recommended contour level is 198 nm^3 ; this corresponds to an approximate mass of 179 kDa.

The volume estimate graph shows how the enclosed volume varies with the contour level. The recommended contour level is shown as a vertical line and the intersection between the line and the curve gives the volume of the enclosed surface at the given level.

7.3 Rotationally averaged power spectrum ⓘ

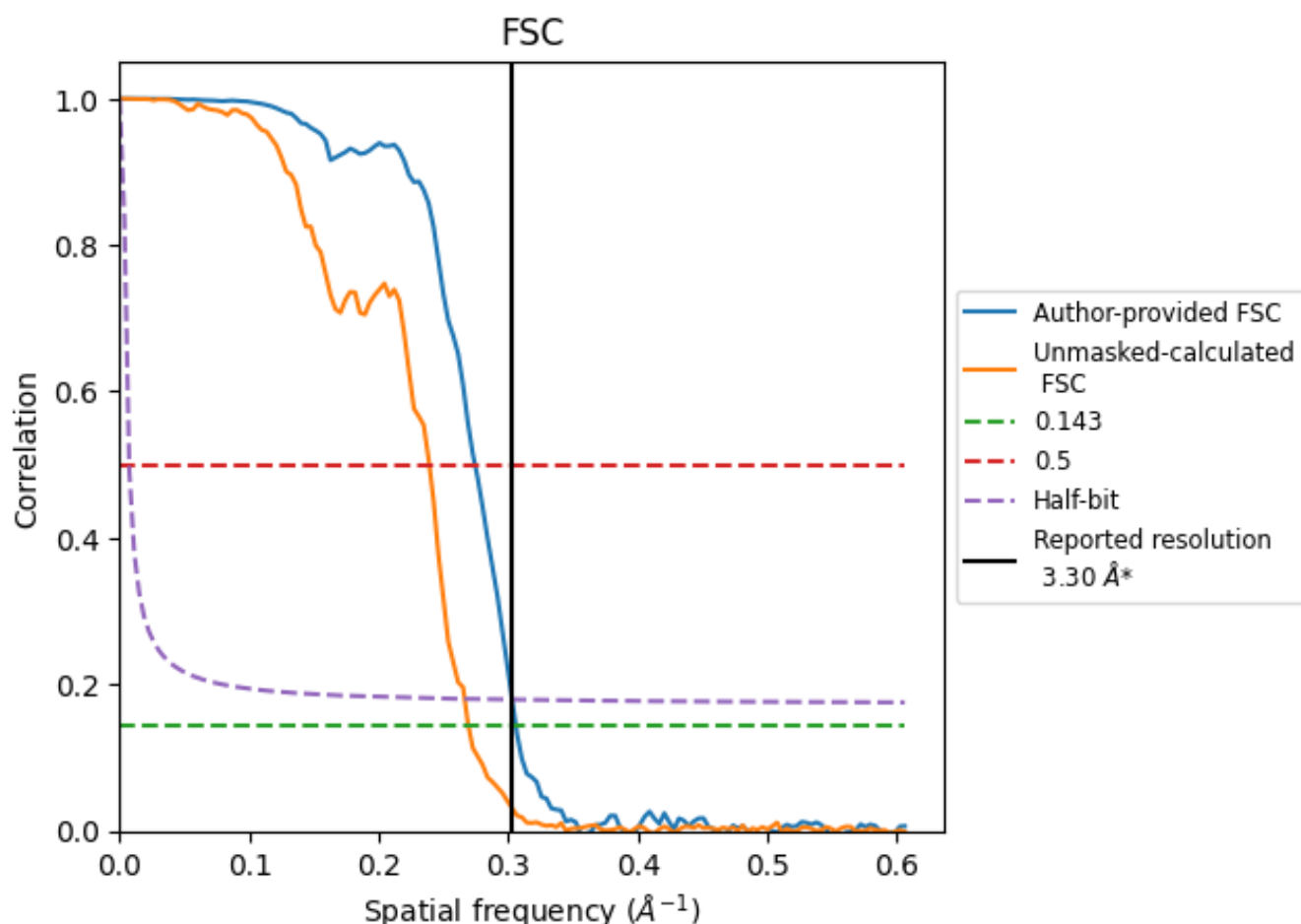


*Reported resolution corresponds to spatial frequency of 0.303 Å⁻¹

8 Fourier-Shell correlation [i](#)

Fourier-Shell Correlation (FSC) is the most commonly used method to estimate the resolution of single-particle and subtomogram-averaged maps. The shape of the curve depends on the imposed symmetry, mask and whether or not the two 3D reconstructions used were processed from a common reference. The reported resolution is shown as a black line. A curve is displayed for the half-bit criterion in addition to lines showing the 0.143 gold standard cut-off and 0.5 cut-off.

8.1 FSC [i](#)



*Reported resolution corresponds to spatial frequency of 0.303 Å⁻¹

8.2 Resolution estimates [i](#)

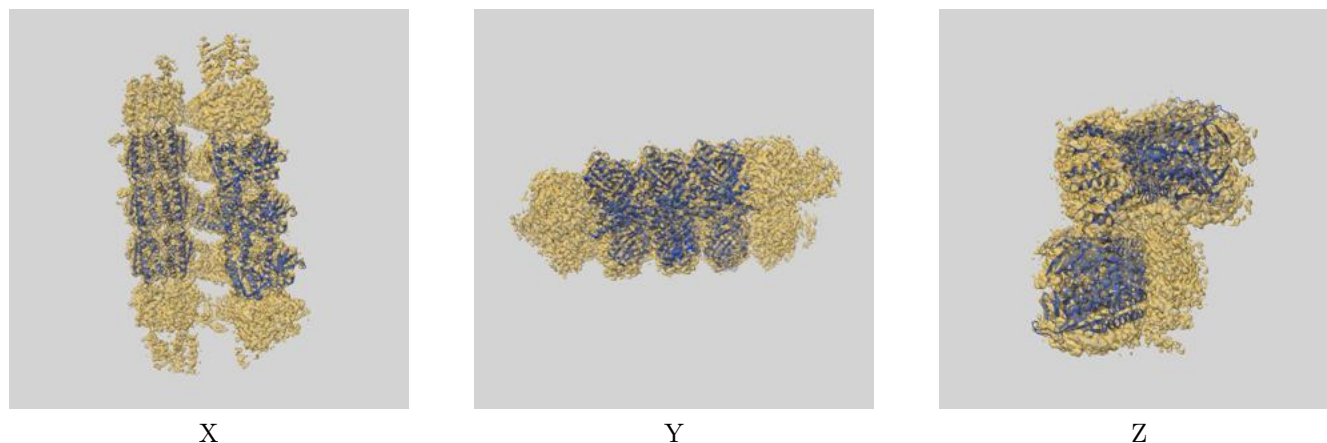
Resolution estimate (Å)	Estimation criterion (FSC cut-off)		
	0.143	0.5	Half-bit
Reported by author	3.30	-	-
Author-provided FSC curve	3.27	3.64	3.30
Unmasked-calculated*	3.71	4.18	3.75

*Resolution estimate based on FSC curve calculated by comparison of deposited half-maps. The value from deposited half-maps intersecting FSC 0.143 CUT-OFF 3.71 differs from the reported value 3.3 by more than 10 %

9 Map-model fit [i](#)

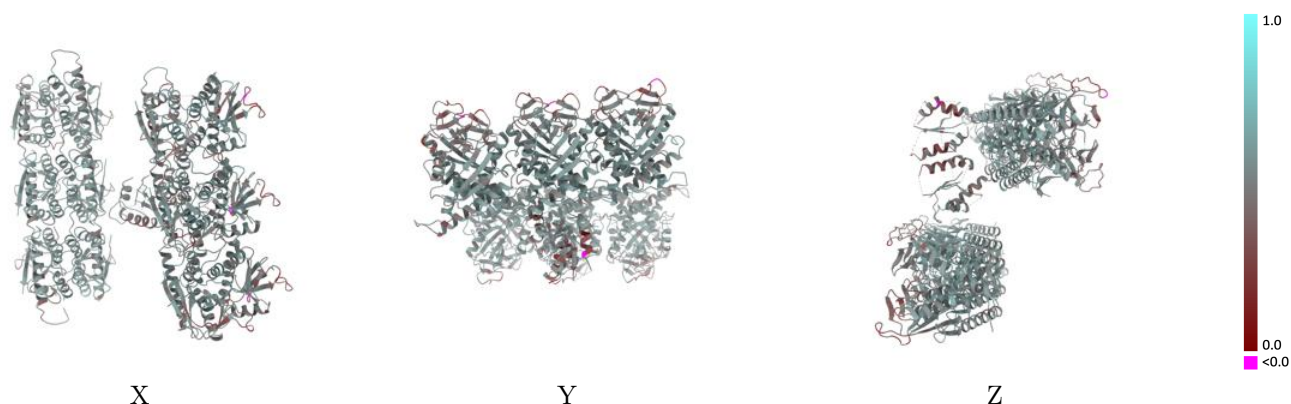
This section contains information regarding the fit between EMDB map EMD-26617 and PDB model 7UN9. Per-residue inclusion information can be found in section [3](#) on page [22](#).

9.1 Map-model overlay [i](#)



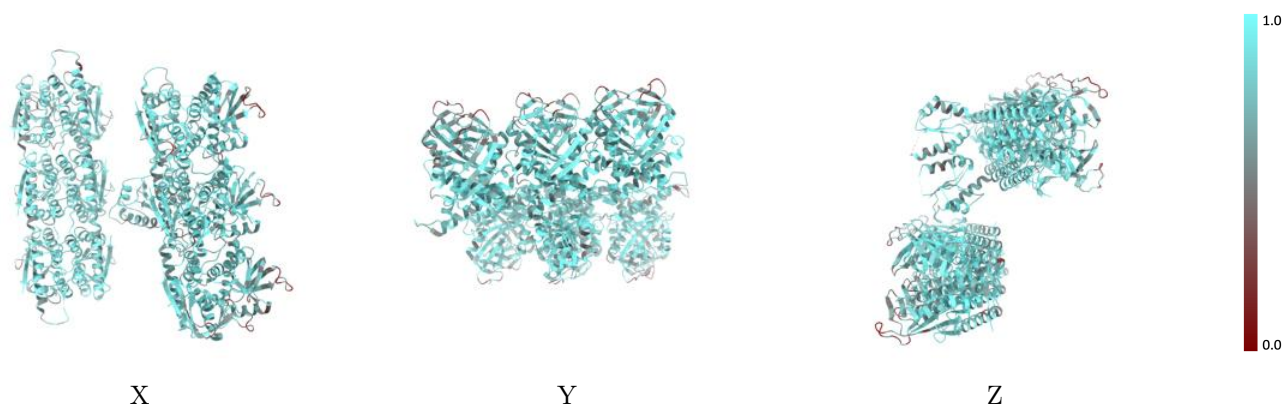
The images above show the 3D surface view of the map at the recommended contour level 0.25 at 50% transparency in yellow overlaid with a ribbon representation of the model coloured in blue. These images allow for the visual assessment of the quality of fit between the atomic model and the map.

9.2 Q-score mapped to coordinate model [i](#)



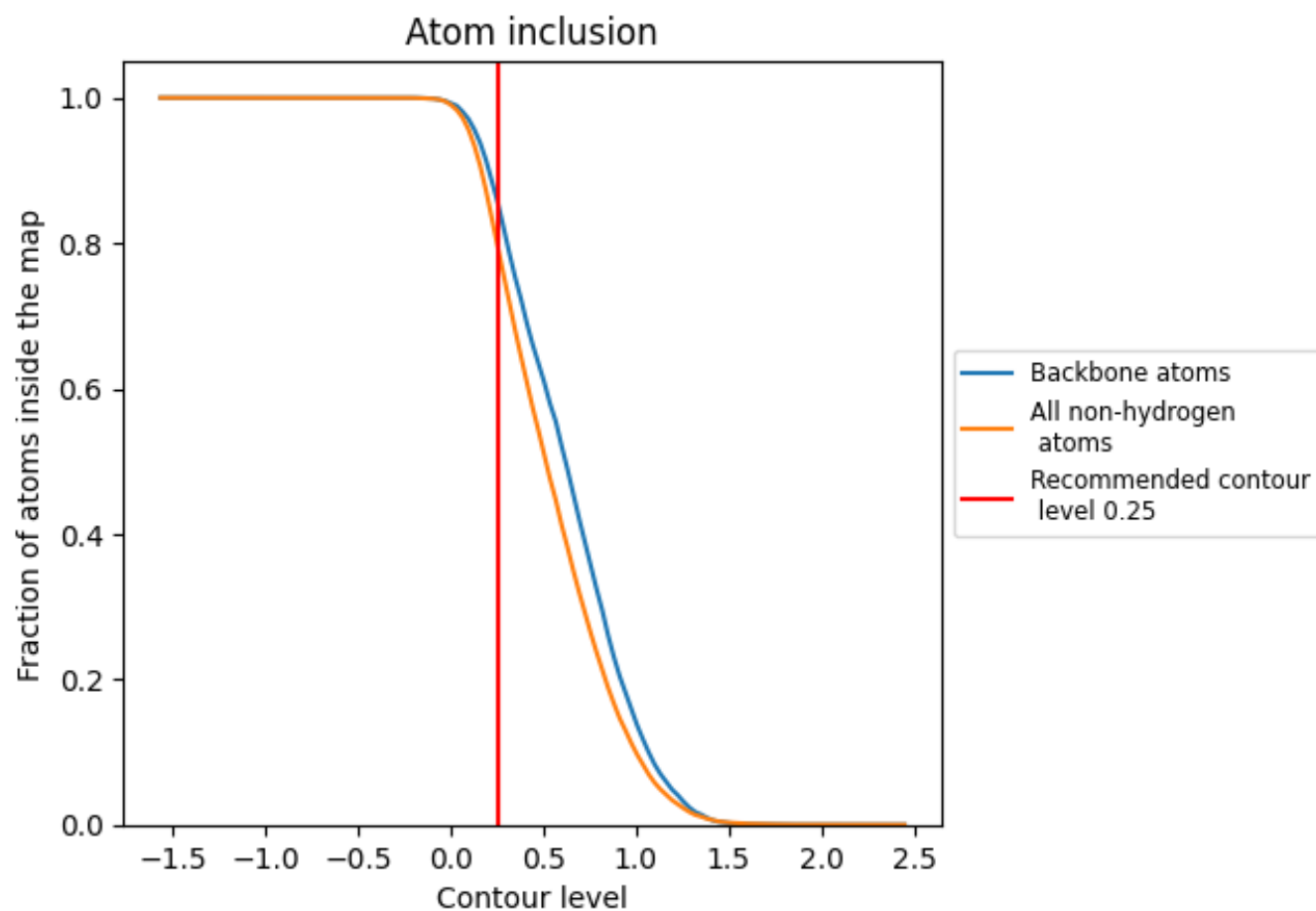
The images above show the model with each residue coloured according to its Q-score. This shows their resolvability in the map with higher Q-score values reflecting better resolvability. Please note: Q-score is calculating the resolvability of atoms, and thus high values are only expected at resolutions at which atoms can be resolved. Low Q-score values may therefore be expected for many entries.

9.3 Atom inclusion mapped to coordinate model [i](#)



The images above show the model with each residue coloured according to its atom inclusion. This shows to what extent they are inside the map at the recommended contour level (0.25).

9.4 Atom inclusion [i](#)



At the recommended contour level, 86% of all backbone atoms, 80% of all non-hydrogen atoms, are inside the map.

9.5 Map-model fit summary ⓘ

The table lists the average atom inclusion at the recommended contour level (0.25) and Q-score for the entire model and for each chain.

Chain	Atom inclusion	Q-score
All	<div><div></div></div> 0.7989	<div><div></div></div> 0.5150
A	<div><div></div></div> 0.8257	<div><div></div></div> 0.5350
B	<div><div></div></div> 0.8436	<div><div></div></div> 0.5440
C	<div><div></div></div> 0.7950	<div><div></div></div> 0.5160
D	<div><div></div></div> 0.8136	<div><div></div></div> 0.5310
E	<div><div></div></div> 0.7494	<div><div></div></div> 0.4960
F	<div><div></div></div> 0.7963	<div><div></div></div> 0.5160
G	<div><div></div></div> 0.8129	<div><div></div></div> 0.5050
H	<div><div></div></div> 0.8002	<div><div></div></div> 0.5050
I	<div><div></div></div> 0.7605	<div><div></div></div> 0.5090
J	<div><div></div></div> 0.7807	<div><div></div></div> 0.5030
K	<div><div></div></div> 0.8106	<div><div></div></div> 0.5190
L	<div><div></div></div> 0.7924	<div><div></div></div> 0.5100

1.0

0.0

<0.0