



Full wwPDB X-ray Structure Validation Report ⓘ

May 25, 2020 – 06:55 am BST

PDB ID : 1UQT
Title : Trehalose-6-phosphate from E. coli bound with UDP-2-fluoro glucose.
Authors : Gibson, R.P.; Tarling, C.A.; Roberts, S.; Withers, S.G.; Davies, G.J.
Deposited on : 2003-10-20
Resolution : 2.00 Å(reported)

This is a Full wwPDB X-ray Structure Validation Report for a publicly released PDB entry.

We welcome your comments at validation@mail.wwpdb.org

A user guide is available at

<https://www.wwpdb.org/validation/2017/XrayValidationReportHelp>

with specific help available everywhere you see the ⓘ symbol.

The following versions of software and data (see [references ⓘ](#)) were used in the production of this report:

MolProbity : 4.02b-467
Mogul : 1.8.5 (274361), CSD as541be (2020)
Xtriage (Phenix) : 1.13
EDS : 2.11
buster-report : 1.1.7 (2018)
Percentile statistics : 20191225.v01 (using entries in the PDB archive December 25th 2019)
Refmac : 5.8.0158
CCP4 : 7.0.044 (Gargrove)
Ideal geometry (proteins) : Engh & Huber (2001)
Ideal geometry (DNA, RNA) : Parkinson et al. (1996)
Validation Pipeline (wwPDB-VP) : 2.11

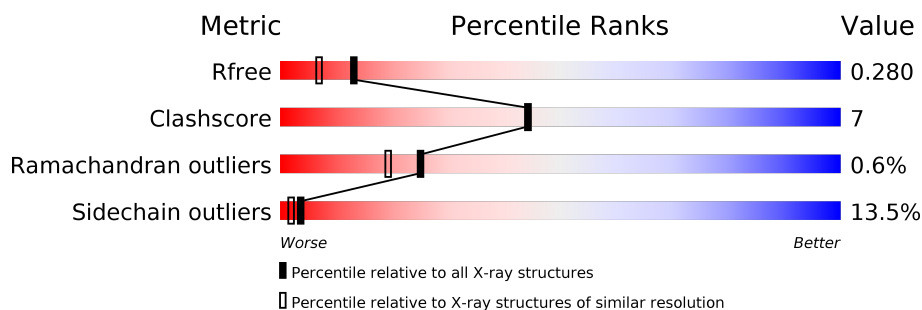
1 Overall quality at a glance

The following experimental techniques were used to determine the structure:

X-RAY DIFFRACTION

The reported resolution of this entry is 2.00 Å.

Percentile scores (ranging between 0-100) for global validation metrics of the entry are shown in the following graphic. The table shows the number of entries on which the scores are based.



Metric	Whole archive (#Entries)	Similar resolution (#Entries, resolution range(Å))
R_{free}	130704	8085 (2.00-2.00)
Clashscore	141614	9178 (2.00-2.00)
Ramachandran outliers	138981	9054 (2.00-2.00)
Sidechain outliers	138945	9053 (2.00-2.00)

The table below summarises the geometric issues observed across the polymeric chains and their fit to the electron density. The red, orange, yellow and green segments on the lower bar indicate the fraction of residues that contain outliers for ≥ 3 , 2, 1 and 0 types of geometric quality criteria respectively. A grey segment represents the fraction of residues that are not modelled. The numeric value for each fraction is indicated below the corresponding segment, with a dot representing fractions $\leq 5\%$

Mol	Chain	Length	Quality of chain
1	A	482	
1	B	482	

2 Entry composition [i](#)

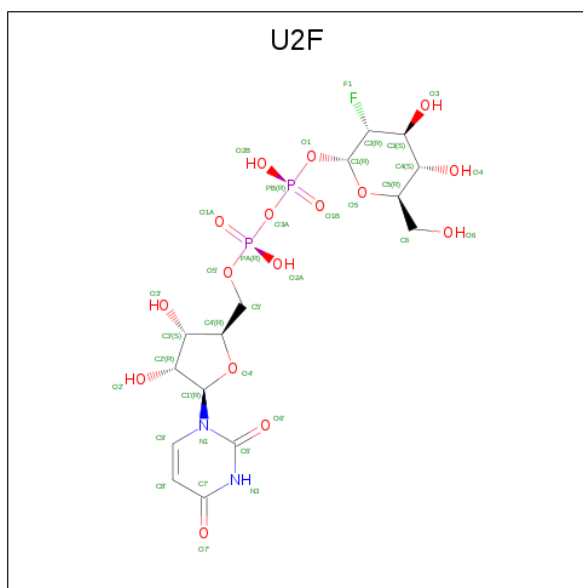
There are 3 unique types of molecules in this entry. The entry contains 7411 atoms, of which 0 are hydrogens and 0 are deuteriums.

In the tables below, the ZeroOcc column contains the number of atoms modelled with zero occupancy, the AltConf column contains the number of residues with at least one atom in alternate conformation and the Trace column contains the number of residues modelled with at most 2 atoms.

- Molecule 1 is a protein called ALPHA, ALPHA-TREHALOSE-PHOSPHATE SYNTHASE.

Mol	Chain	Residues	Atoms					ZeroOcc	AltConf	Trace
1	A	452	Total	C	N	O	S	0	0	0
			3625	2329	631	658	7			
1	B	450	Total	C	N	O	S	0	0	0
			3611	2322	629	653	7			

- Molecule 2 is URIDINE-5'-DIPHOSPHATE-2-DEOXY-2-FLUORO-ALPHA-D-GLUCOSE (three-letter code: U2F) (formula: $C_{15}H_{23}FN_2O_{16}P_2$).



Mol	Chain	Residues	Atoms					ZeroOcc	AltConf
2	A	1	Total	C	F	N	O	P	0
			36	15	1	2	16	2	
2	B	1	Total	C	F	N	O	P	0
			36	15	1	2	16	2	

- Molecule 3 is water.

Mol	Chain	Residues	Atoms		ZeroOcc	AltConf
3	A	72	Total 72	O 72	0	0
3	B	31	Total 31	O 31	0	0

4 Data and refinement statistics

Property	Value	Source
Space group	P 21 21 2	Depositor
Cell constants a, b, c, α , β , γ	88.92Å 101.52Å 118.21Å 90.00° 90.00° 90.00°	Depositor
Resolution (Å)	19.92 – 2.00 19.90 – 2.00	Depositor EDS
% Data completeness (in resolution range)	97.7 (19.92-2.00) 97.7 (19.90-2.00)	Depositor EDS
R_{merge}	0.06	Depositor
R_{sym}	(Not available)	Depositor
$\langle I/\sigma(I) \rangle$ ¹	1.69 (at 2.01Å)	Xtriage
Refinement program	REFMAC 5.1.24	Depositor
R, R_{free}	0.219 , 0.251 0.259 , 0.280	Depositor DCC
R_{free} test set	6856 reflections (5.05%)	wwPDB-VP
Wilson B-factor (Å ²)	31.0	Xtriage
Anisotropy	0.302	Xtriage
Bulk solvent k_{sol} (e/Å ³), B_{sol} (Å ²)	0.37 , 33.8	EDS
L-test for twinning ²	$\langle L \rangle = 0.50$, $\langle L^2 \rangle = 0.33$	Xtriage
Estimated twinning fraction	No twinning to report.	Xtriage
F_o, F_c correlation	0.92	EDS
Total number of atoms	7411	wwPDB-VP
Average B, all atoms (Å ²)	21.0	wwPDB-VP

Xtriage's analysis on translational NCS is as follows: *The largest off-origin peak in the Patterson function is 4.80% of the height of the origin peak. No significant pseudotranslation is detected.*

¹Intensities estimated from amplitudes.

²Theoretical values of $\langle |L| \rangle$, $\langle L^2 \rangle$ for acentric reflections are 0.5, 0.333 respectively for untwinned datasets, and 0.375, 0.2 for perfectly twinned datasets.

5 Model quality [i](#)

5.1 Standard geometry [i](#)

Bond lengths and bond angles in the following residue types are not validated in this section: U2F

The Z score for a bond length (or angle) is the number of standard deviations the observed value is removed from the expected value. A bond length (or angle) with $|Z| > 5$ is considered an outlier worth inspection. RMSZ is the root-mean-square of all Z scores of the bond lengths (or angles).

Mol	Chain	Bond lengths		Bond angles	
		RMSZ	# $ Z > 5$	RMSZ	# $ Z > 5$
1	A	0.69	0/3716	0.90	8/5051 (0.2%)
1	B	0.69	4/3702 (0.1%)	0.89	14/5032 (0.3%)
All	All	0.69	4/7418 (0.1%)	0.89	22/10083 (0.2%)

All (4) bond length outliers are listed below:

Mol	Chain	Res	Type	Atoms	Z	Observed(Å)	Ideal(Å)
1	B	363	MET	SD-CE	-10.05	1.21	1.77
1	B	124	ASP	C-O	6.96	1.36	1.23
1	B	123	ASP	CG-OD1	5.31	1.37	1.25
1	B	345	MET	SD-CE	-5.00	1.49	1.77

All (22) bond angle outliers are listed below:

Mol	Chain	Res	Type	Atoms	Z	Observed(°)	Ideal(°)
1	A	272	ARG	NE-CZ-NH2	-11.88	114.36	120.30
1	B	272	ARG	NE-CZ-NH1	9.67	125.13	120.30
1	A	272	ARG	NE-CZ-NH1	8.90	124.75	120.30
1	B	272	ARG	NE-CZ-NH2	-8.90	115.85	120.30
1	B	438	ASP	CB-CG-OD2	8.46	125.92	118.30
1	B	406	ASP	CB-CG-OD2	7.52	125.07	118.30
1	A	404	ASP	CB-CG-OD2	7.45	125.01	118.30
1	B	302	ASP	CB-CG-OD2	7.41	124.97	118.30
1	A	406	ASP	CB-CG-OD2	6.97	124.58	118.30
1	A	170	ASP	CB-CG-OD2	6.84	124.46	118.30
1	B	73	ASP	CB-CG-OD2	6.83	124.45	118.30
1	B	178	ASP	CB-CG-OD2	6.64	124.28	118.30
1	B	404	ASP	CB-CG-OD2	6.55	124.19	118.30
1	A	405	ARG	NE-CZ-NH2	-6.34	117.13	120.30
1	B	195	ASP	CB-CG-OD2	6.16	123.84	118.30

Continued on next page...

Continued from previous page...

Mol	Chain	Res	Type	Atoms	Z	Observed(°)	Ideal(°)
1	A	291	ARG	NE-CZ-NH2	-6.03	117.28	120.30
1	B	114	ASP	CB-CG-OD2	5.93	123.64	118.30
1	B	122	ASP	CB-CG-OD2	5.79	123.51	118.30
1	B	71	ASP	CB-CG-OD2	5.48	123.23	118.30
1	B	103	ASP	CB-CG-OD2	5.42	123.17	118.30
1	B	413	ASP	CB-CG-OD2	5.23	123.01	118.30
1	A	195	ASP	CB-CG-OD2	5.04	122.83	118.30

There are no chirality outliers.

There are no planarity outliers.

5.2 Too-close contacts ⓘ

In the following table, the Non-H and H(model) columns list the number of non-hydrogen atoms and hydrogen atoms in the chain respectively. The H(added) column lists the number of hydrogen atoms added and optimized by MolProbity. The Clashes column lists the number of clashes within the asymmetric unit, whereas Symm-Clashes lists symmetry related clashes.

Mol	Chain	Non-H	H(model)	H(added)	Clashes	Symm-Clashes
1	A	3625	0	3600	39	0
1	B	3611	0	3591	57	0
2	A	36	0	21	0	0
2	B	36	0	21	0	0
3	A	72	0	0	3	0
3	B	31	0	0	3	0
All	All	7411	0	7233	96	0

The all-atom clashscore is defined as the number of clashes found per 1000 atoms (including hydrogen atoms). The all-atom clashscore for this structure is 7.

All (96) close contacts within the same asymmetric unit are listed below, sorted by their clash magnitude.

Atom-1	Atom-2	Interatomic distance (Å)	Clash overlap (Å)
1:A:272:ARG:HD2	1:A:357:THR:OG1	1.68	0.94
1:B:315:ASN:HB2	3:B:2015:HOH:O	1.72	0.89
1:B:75:TYR:CD2	1:B:108:VAL:HG11	2.10	0.87
1:B:232:ILE:HG23	1:B:345:MET:HE2	1.65	0.79
1:B:261:GLU:CD	1:B:272:ARG:HH22	1.87	0.79
1:A:272:ARG:CD	1:A:357:THR:OG1	2.39	0.70
1:B:75:TYR:CG	1:B:108:VAL:HG11	2.27	0.69

Continued on next page...

Continued from previous page...

Atom-1	Atom-2	Interatomic distance (Å)	Clash overlap (Å)
1:A:349:ARG:O	3:A:2052:HOH:O	2.13	0.66
1:B:232:ILE:HG23	1:B:345:MET:CE	2.25	0.66
1:B:71:ASP:O	1:B:75:TYR:HB3	1.98	0.64
1:B:261:GLU:OE2	1:B:272:ARG:NH2	2.32	0.62
1:B:8:ASN:ND2	1:B:75:TYR:OH	2.33	0.61
1:B:263:LEU:HD21	1:B:309:ILE:HG13	1.82	0.59
1:A:261:GLU:CD	1:A:272:ARG:HH22	2.05	0.59
1:A:8:ASN:O	1:A:41:TRP:HB3	2.02	0.59
1:A:355:LEU:HG	1:A:412:LEU:HD21	1.85	0.58
1:B:272:ARG:HD2	1:B:357:THR:OG1	2.04	0.57
1:B:140:LEU:O	1:B:145:VAL:HG13	2.05	0.57
1:B:374:GLN:OE1	3:B:2021:HOH:O	2.18	0.56
1:B:41:TRP:CE2	1:B:43:GLY:HA2	2.41	0.56
1:B:2:ARG:HD3	1:B:121:GLN:HE22	1.70	0.56
1:A:401:ASN:C	1:A:401:ASN:HD22	2.09	0.55
1:B:363:MET:HE1	1:B:390:ALA:HA	1.89	0.54
1:A:8:ASN:ND2	1:A:75:TYR:OH	2.40	0.54
1:B:401:ASN:HD22	1:B:401:ASN:C	2.12	0.53
1:B:137:ALA:HB2	1:B:179:TYR:CE1	2.43	0.53
1:A:258:PHE:HZ	1:A:295:ILE:HD12	1.74	0.52
1:B:158:PRO:HG2	1:B:163:PHE:HB2	1.91	0.52
1:B:363:MET:CE	1:B:390:ALA:HA	2.39	0.52
1:B:65:PHE:CE1	1:B:112:LEU:HD11	2.45	0.52
1:B:363:MET:HE3	1:B:390:ALA:HB2	1.92	0.52
1:B:401:ASN:ND2	1:B:403:TYR:H	2.08	0.52
1:B:363:MET:HE2	1:B:368:LYS:HE3	1.92	0.51
1:B:401:ASN:HD21	1:B:403:TYR:HD1	1.58	0.51
1:A:78:GLN:O	1:A:82:ALA:HB3	2.11	0.50
1:A:437:ASN:HD22	1:A:441:HIS:HD2	1.58	0.50
1:A:212:THR:HG22	3:A:2032:HOH:O	2.12	0.49
1:A:147:ASN:HD22	1:A:147:ASN:H	1.61	0.49
1:A:163:PHE:CE2	1:A:169:TYR:HB2	2.48	0.49
1:B:59:ASN:HB3	1:B:60:ILE:HG23	1.95	0.48
1:B:92:LEU:HA	1:B:95:VAL:HG13	1.96	0.48
1:A:401:ASN:HD21	1:A:403:TYR:HD1	1.62	0.48
1:B:371:VAL:HG22	1:B:434:ILE:HD13	1.95	0.48
1:A:6:VAL:HG13	1:A:128:ILE:CD1	2.43	0.48
1:B:379:PRO:CD	1:B:424:ILE:HD13	2.45	0.47
1:A:102:TRP:CE3	1:A:168:THR:HG21	2.48	0.47
1:A:261:GLU:O	1:A:296:ALA:HA	2.14	0.47
1:A:148:ARG:HG2	1:A:453:ILE:HG13	1.97	0.46

Continued on next page...

Continued from previous page...

Atom-1	Atom-2	Interatomic distance (Å)	Clash overlap (Å)
1:B:261:GLU:O	1:B:296:ALA:HA	2.16	0.46
1:B:60:ILE:HD11	1:B:62:TRP:CZ2	2.51	0.46
1:B:6:VAL:HG13	1:B:128:ILE:CD1	2.46	0.45
1:B:60:ILE:HD11	1:B:62:TRP:CH2	2.51	0.45
1:B:363:MET:HE3	1:B:390:ALA:CA	2.46	0.45
1:B:75:TYR:CD2	1:B:108:VAL:CG1	2.92	0.45
1:A:401:ASN:HD22	1:A:403:TYR:H	1.64	0.45
1:A:261:GLU:OE2	1:A:272:ARG:NH2	2.50	0.45
1:A:401:ASN:ND2	1:A:403:TYR:H	2.15	0.45
1:A:443:GLN:O	1:A:447:ILE:HG12	2.18	0.44
1:A:72:LEU:HD22	1:A:76:TYR:HB3	1.99	0.44
1:B:138:HIS:CE1	1:B:142:LYS:HD2	2.52	0.44
1:B:8:ASN:O	1:B:41:TRP:HB3	2.18	0.44
1:A:151:PHE:HB2	1:A:179:TYR:CD1	2.53	0.44
1:A:159:THR:HB	3:A:2020:HOH:O	2.18	0.43
1:B:102:TRP:CE3	1:B:168:THR:HG21	2.52	0.43
1:A:315:ASN:HB2	3:B:2015:HOH:O	2.18	0.43
1:B:116:LEU:HD12	1:B:136:PHE:CZ	2.54	0.43
1:B:264:ASP:HB3	1:B:267:LYS:HG2	2.01	0.43
1:B:117:LEU:HB3	1:B:118:PRO:HD3	1.99	0.43
1:B:209:LYS:HB3	1:B:220:THR:O	2.18	0.43
1:B:72:LEU:HD22	1:B:76:TYR:HB3	2.00	0.43
1:A:102:TRP:CZ3	1:A:168:THR:HG21	2.53	0.43
1:A:230:LYS:HZ3	1:A:230:LYS:H	1.66	0.43
1:B:127:TRP:CD1	1:B:446:PHE:CE2	3.06	0.43
1:A:259:SER:HB3	1:A:272:ARG:HH21	1.84	0.43
1:A:6:VAL:HG13	1:A:128:ILE:HD13	2.01	0.43
1:A:258:PHE:CZ	1:A:295:ILE:HD12	2.53	0.43
1:A:230:LYS:HD2	1:A:230:LYS:N	2.34	0.42
1:B:163:PHE:CE2	1:B:169:TYR:HB2	2.54	0.42
1:A:3:LEU:O	1:A:36:GLY:HA3	2.20	0.42
1:B:2:ARG:HD3	1:B:121:GLN:NE2	2.33	0.42
1:B:303:VAL:HG22	1:B:306:TYR:HD1	1.84	0.42
1:B:401:ASN:HD22	1:B:403:TYR:H	1.66	0.42
1:B:59:ASN:HD22	1:B:59:ASN:HA	1.53	0.42
1:A:155:ILE:HB	1:A:156:PRO:CD	2.50	0.42
1:B:430:MET:O	1:B:434:ILE:HG23	2.19	0.42
1:B:207:SER:C	1:B:209:LYS:H	2.23	0.41
1:B:225:ILE:HG23	1:B:365:LEU:HD21	2.02	0.41
1:B:138:HIS:HE1	1:B:142:LYS:HD2	1.85	0.41
1:A:200:LEU:HD13	1:A:214:TRP:CZ2	2.56	0.41

Continued on next page...

Continued from previous page...

Atom-1	Atom-2	Interatomic distance (Å)	Clash overlap (Å)
1:B:41:TRP:CZ2	1:B:43:GLY:HA2	2.56	0.41
1:B:379:PRO:CD	1:B:424:ILE:CD1	2.99	0.41
1:B:134:LEU:N	1:B:135:PRO:CD	2.83	0.40
1:B:138:HIS:CE1	1:B:142:LYS:CD	3.04	0.40
1:A:230:LYS:HD2	1:A:230:LYS:H	1.86	0.40
1:A:138:HIS:HD2	1:A:178:ASP:OD2	2.05	0.40
1:A:231:GLU:O	1:A:235:GLN:HG3	2.21	0.40

There are no symmetry-related clashes.

5.3 Torsion angles [i](#)

5.3.1 Protein backbone [i](#)

In the following table, the Percentiles column shows the percent Ramachandran outliers of the chain as a percentile score with respect to all X-ray entries followed by that with respect to entries of similar resolution.

The Analysed column shows the number of residues for which the backbone conformation was analysed, and the total number of residues.

Mol	Chain	Analysed	Favoured	Allowed	Outliers	Percentiles	
1	A	448/482 (93%)	431 (96%)	14 (3%)	3 (1%)	22	16
1	B	446/482 (92%)	422 (95%)	22 (5%)	2 (0%)	34	30
All	All	894/964 (93%)	853 (95%)	36 (4%)	5 (1%)	25	19

All (5) Ramachandran outliers are listed below:

Mol	Chain	Res	Type
1	B	45	THR
1	A	364	ASN
1	B	58	GLY
1	A	13	PRO
1	A	130	ASP

5.3.2 Protein sidechains [i](#)

In the following table, the Percentiles column shows the percent sidechain outliers of the chain as a percentile score with respect to all X-ray entries followed by that with respect to entries of similar resolution.

The Analysed column shows the number of residues for which the sidechain conformation was analysed, and the total number of residues.

Mol	Chain	Analysed	Rotameric	Outliers	Percentiles	
1	A	382/407 (94%)	333 (87%)	49 (13%)	4	2
1	B	380/407 (93%)	326 (86%)	54 (14%)	3	1
All	All	762/814 (94%)	659 (86%)	103 (14%)	4	2

All (103) residues with a non-rotameric sidechain are listed below:

Mol	Chain	Res	Type
1	A	6	VAL
1	A	9	ARG
1	A	14	ASP
1	A	19	SER
1	A	32	LYS
1	A	37	LEU
1	A	47	ASN
1	A	52	LEU
1	A	53	LYS
1	A	67	LEU
1	A	72	LEU
1	A	75	TYR
1	A	92	LEU
1	A	94	LEU
1	A	95	VAL
1	A	99	ARG
1	A	116	LEU
1	A	117	LEU
1	A	123	ASP
1	A	130	ASP
1	A	142	LYS
1	A	153	LEU
1	A	159	THR
1	A	166	LEU
1	A	170	ASP
1	A	172	LEU
1	A	182	LEU
1	A	191	LEU
1	A	195	ASP
1	A	200	LEU
1	A	230	LYS
1	A	244	LEU
1	A	269	LEU

Continued on next page...

Continued from previous page...

Mol	Chain	Res	Type
1	A	272	ARG
1	A	274	LEU
1	A	280	LEU
1	A	285	GLN
1	A	291	ARG
1	A	350	TYR
1	A	355	LEU
1	A	359	LEU
1	A	360	ARG
1	A	371	VAL
1	A	384	LEU
1	A	395	THR
1	A	398	LEU
1	A	401	ASN
1	A	405	ARG
1	A	453	ILE
1	B	2	ARG
1	B	6	VAL
1	B	25	VAL
1	B	28	LEU
1	B	37	LEU
1	B	45	THR
1	B	47	ASN
1	B	48	GLU
1	B	49	ASP
1	B	50	GLN
1	B	52	LEU
1	B	56	LYS
1	B	59	ASN
1	B	61	THR
1	B	72	LEU
1	B	92	LEU
1	B	94	LEU
1	B	96	GLN
1	B	98	GLN
1	B	99	ARG
1	B	116	LEU
1	B	119	LEU
1	B	130	ASP
1	B	145	VAL
1	B	148	ARG
1	B	153	LEU

Continued on next page...

Continued from previous page...

Mol	Chain	Res	Type
1	B	166	LEU
1	B	172	LEU
1	B	173	LEU
1	B	191	LEU
1	B	194	LEU
1	B	198	SER
1	B	200	LEU
1	B	227	ILE
1	B	261	GLU
1	B	269	LEU
1	B	272	ARG
1	B	274	LEU
1	B	280	LEU
1	B	285	GLN
1	B	291	ARG
1	B	302	ASP
1	B	309	ILE
1	B	312	GLN
1	B	313	LEU
1	B	350	TYR
1	B	355	LEU
1	B	359	LEU
1	B	360	ARG
1	B	395	THR
1	B	398	LEU
1	B	401	ASN
1	B	405	ARG
1	B	434	ILE

Some sidechains can be flipped to improve hydrogen bonding and reduce clashes. All (23) such sidechains are listed below:

Mol	Chain	Res	Type
1	A	8	ASN
1	A	77	ASN
1	A	78	GLN
1	A	138	HIS
1	A	147	ASN
1	A	175	GLN
1	A	312	GLN
1	A	401	ASN
1	A	441	HIS
1	B	8	ASN

Continued on next page...

Continued from previous page...

Mol	Chain	Res	Type
1	B	47	ASN
1	B	59	ASN
1	B	66	ASN
1	B	77	ASN
1	B	96	GLN
1	B	121	GLN
1	B	138	HIS
1	B	175	GLN
1	B	255	GLN
1	B	256	ASN
1	B	307	GLN
1	B	315	ASN
1	B	401	ASN

5.3.3 RNA [i](#)

There are no RNA molecules in this entry.

5.4 Non-standard residues in protein, DNA, RNA chains [i](#)

There are no non-standard protein/DNA/RNA residues in this entry.

5.5 Carbohydrates [i](#)

There are no carbohydrates in this entry.

5.6 Ligand geometry [i](#)

2 ligands are modelled in this entry.

In the following table, the Counts columns list the number of bonds (or angles) for which Mogul statistics could be retrieved, the number of bonds (or angles) that are observed in the model and the number of bonds (or angles) that are defined in the Chemical Component Dictionary. The Link column lists molecule types, if any, to which the group is linked. The Z score for a bond length (or angle) is the number of standard deviations the observed value is removed from the expected value. A bond length (or angle) with $|Z| > 2$ is considered an outlier worth inspection. RMSZ is the root-mean-square of all Z scores of the bond lengths (or angles).

Mol	Type	Chain	Res	Link	Bond lengths			Bond angles		
					Counts	RMSZ	$\# Z > 2$	Counts	RMSZ	$\# Z > 2$
2	U2F	A	900	-	31,38,38	3.49	12 (38%)	39,58,58	3.61	10 (25%)

Mol	Type	Chain	Res	Link	Bond lengths			Bond angles		
					Counts	RMSZ	# Z > 2	Counts	RMSZ	# Z > 2
2	U2F	B	901	-	31,38,38	3.77	11 (35%)	39,58,58	3.64	12 (30%)

In the following table, the Chirals column lists the number of chiral outliers, the number of chiral centers analysed, the number of these observed in the model and the number defined in the Chemical Component Dictionary. Similar counts are reported in the Torsion and Rings columns. '-' means no outliers of that kind were identified.

Mol	Type	Chain	Res	Link	Chirals	Torsions	Rings
2	U2F	A	900	-	-	6/20/59/59	0/3/3/3
2	U2F	B	901	-	-	8/20/59/59	0/3/3/3

All (23) bond length outliers are listed below:

Mol	Chain	Res	Type	Atoms	Z	Observed(Å)	Ideal(Å)
2	B	901	U2F	C2-C3	12.95	1.64	1.52
2	A	900	U2F	C2-C3	11.39	1.62	1.52
2	B	901	U2F	C4-C5	8.77	1.71	1.53
2	A	900	U2F	C4-C5	7.79	1.69	1.53
2	A	900	U2F	O3-C3	6.08	1.57	1.43
2	B	901	U2F	O4-C4	5.95	1.57	1.43
2	A	900	U2F	O5-C1	5.83	1.56	1.41
2	B	901	U2F	O3-C3	5.55	1.56	1.43
2	A	900	U2F	O7'-C7'	-5.31	1.11	1.24
2	B	901	U2F	O5-C1	5.20	1.55	1.41
2	A	900	U2F	O4-C4	5.06	1.54	1.43
2	B	901	U2F	C2-C1	-4.23	1.48	1.52
2	A	900	U2F	C2-C1	-4.17	1.48	1.52
2	B	901	U2F	C7'-N3	4.15	1.40	1.33
2	B	901	U2F	C2'-C1'	-3.93	1.47	1.53
2	B	901	U2F	C9'-N1	3.70	1.40	1.35
2	B	901	U2F	C6-C5	3.22	1.62	1.51
2	A	900	U2F	C2'-C1'	-2.88	1.49	1.53
2	A	900	U2F	C9'-N1	2.40	1.38	1.35
2	B	901	U2F	C4-C3	2.29	1.58	1.52
2	A	900	U2F	C6-C5	2.22	1.59	1.51
2	A	900	U2F	C7'-N3	2.21	1.36	1.33
2	A	900	U2F	PA-O1A	-2.01	1.43	1.50

All (22) bond angle outliers are listed below:

Mol	Chain	Res	Type	Atoms	Z	Observed(°)	Ideal(°)
2	B	901	U2F	O3A-PB-O1	15.15	133.04	102.48
2	A	900	U2F	O3A-PB-O1	14.85	132.43	102.48
2	B	901	U2F	O1-C1-C2	12.17	130.67	108.38
2	A	900	U2F	O1-C1-C2	11.58	129.60	108.38
2	B	901	U2F	O3-C3-C2	6.47	122.52	109.68
2	A	900	U2F	O3-C3-C2	5.93	121.44	109.68
2	A	900	U2F	F1-C2-C3	-5.89	103.62	108.85
2	B	901	U2F	O5-C1-O1	-3.80	106.40	111.36
2	A	900	U2F	O5-C5-C6	3.30	114.63	106.44
2	B	901	U2F	C1-O5-C5	3.28	120.13	113.69
2	B	901	U2F	F1-C2-C1	3.12	111.06	107.57
2	A	900	U2F	O5-C1-O1	-3.04	107.39	111.36
2	B	901	U2F	C1-C2-C3	2.72	114.61	110.60
2	A	900	U2F	C1-C2-C3	2.48	114.25	110.60
2	A	900	U2F	O2B-PB-O1	-2.45	97.12	106.78
2	A	900	U2F	O2B-PB-O1B	-2.45	100.15	112.24
2	B	901	U2F	O6-C6-C5	2.41	119.55	111.29
2	A	900	U2F	C6-C5-C4	-2.39	107.41	113.00
2	B	901	U2F	O2B-PB-O1	-2.17	98.21	106.78
2	B	901	U2F	O5-C5-C6	2.09	111.63	106.44
2	B	901	U2F	O2A-PA-O5'	2.05	117.26	107.75
2	B	901	U2F	PB-O1-C1	2.03	127.58	119.74

There are no chirality outliers.

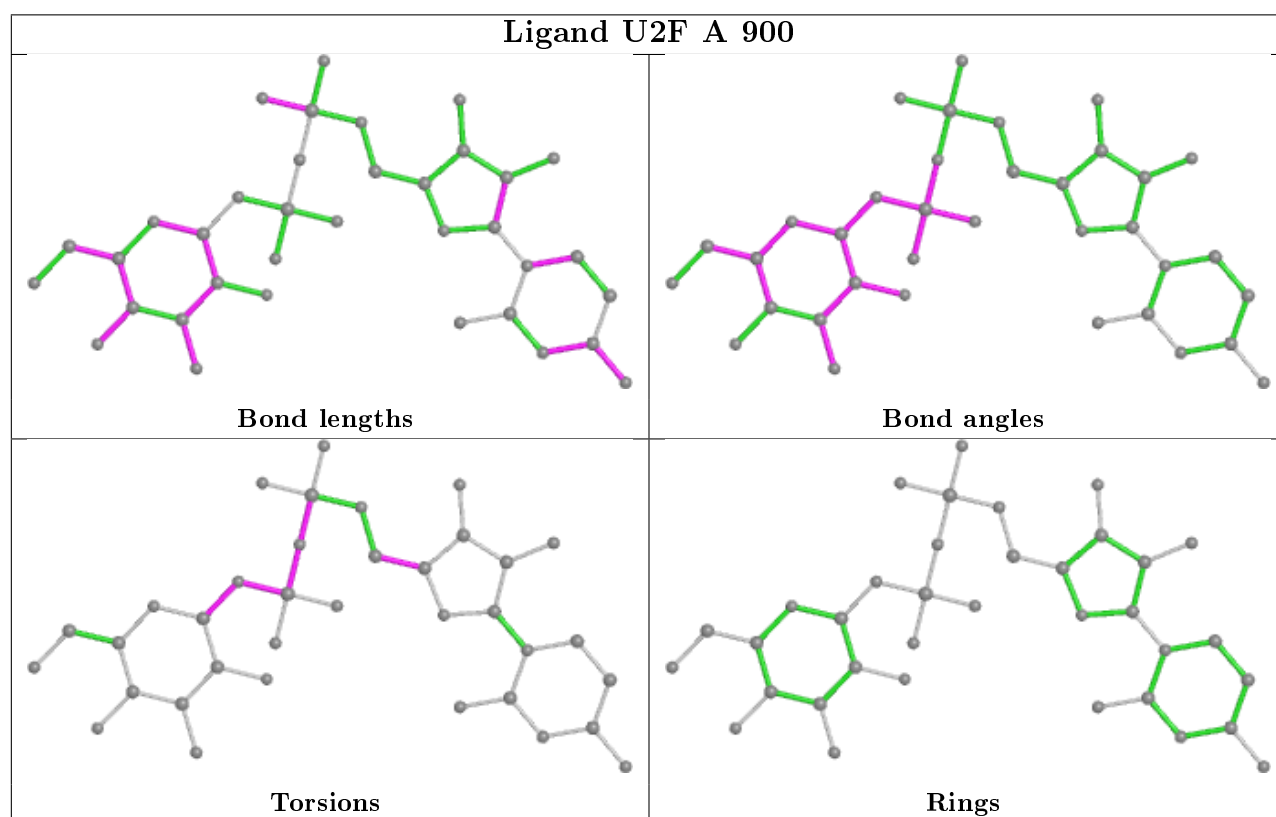
All (14) torsion outliers are listed below:

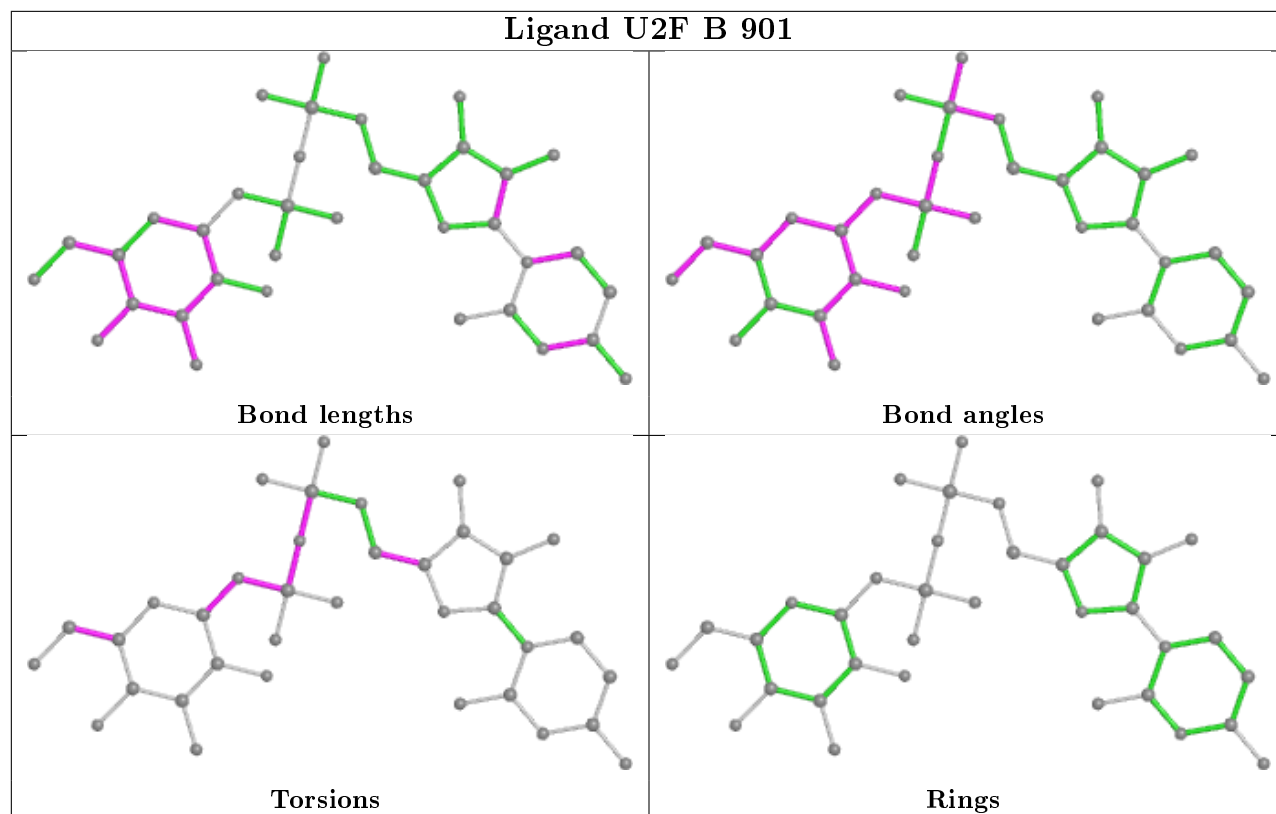
Mol	Chain	Res	Type	Atoms
2	A	900	U2F	O5-C1-O1-PB
2	A	900	U2F	PB-O3A-PA-O5'
2	B	901	U2F	O5-C1-O1-PB
2	B	901	U2F	O4'-C4'-C5'-O5'
2	B	901	U2F	C3'-C4'-C5'-O5'
2	A	900	U2F	O4'-C4'-C5'-O5'
2	A	900	U2F	C3'-C4'-C5'-O5'
2	B	901	U2F	C4-C5-C6-O6
2	B	901	U2F	O5-C5-C6-O6
2	A	900	U2F	PA-O3A-PB-O1
2	B	901	U2F	PA-O3A-PB-O1
2	B	901	U2F	PB-O3A-PA-O5'
2	B	901	U2F	C1-O1-PB-O3A
2	A	900	U2F	C1-O1-PB-O3A

There are no ring outliers.

No monomer is involved in short contacts.

The following is a two-dimensional graphical depiction of Mogul quality analysis of bond lengths, bond angles, torsion angles, and ring geometry for all instances of the Ligand of Interest. In addition, ligands with molecular weight > 250 and outliers as shown on the validation Tables will also be included. For torsion angles, if less than 5% of the Mogul distribution of torsion angles is within 10 degrees of the torsion angle in question, then that torsion angle is considered an outlier. Any bond that is central to one or more torsion angles identified as an outlier by Mogul will be highlighted in the graph. For rings, the root-mean-square deviation (RMSD) between the ring in question and similar rings identified by Mogul is calculated over all ring torsion angles. If the average RMSD is greater than 60 degrees and the minimal RMSD between the ring in question and any Mogul-identified rings is also greater than 60 degrees, then that ring is considered an outlier. The outliers are highlighted in purple. The color gray indicates Mogul did not find sufficient equivalents in the CSD to analyse the geometry.





5.7 Other polymers [i](#)

There are no such residues in this entry.

5.8 Polymer linkage issues [i](#)

There are no chain breaks in this entry.

6 Fit of model and data ⓘ

6.1 Protein, DNA and RNA chains ⓘ

Unable to reproduce the depositors R factor - this section is therefore empty.

6.2 Non-standard residues in protein, DNA, RNA chains ⓘ

Unable to reproduce the depositors R factor - this section is therefore empty.

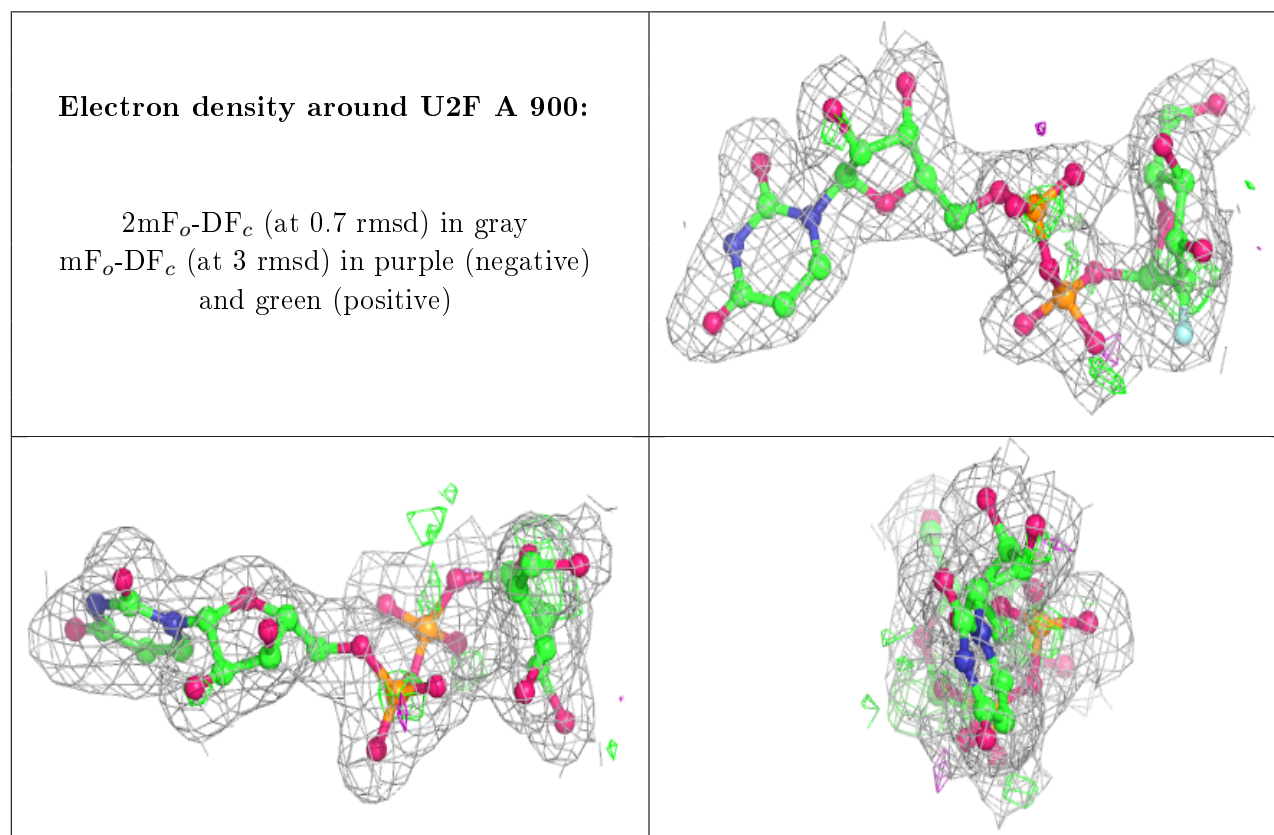
6.3 Carbohydrates ⓘ

Unable to reproduce the depositors R factor - this section is therefore empty.

6.4 Ligands ⓘ

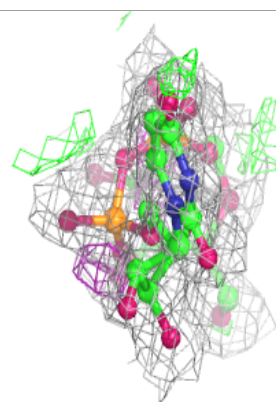
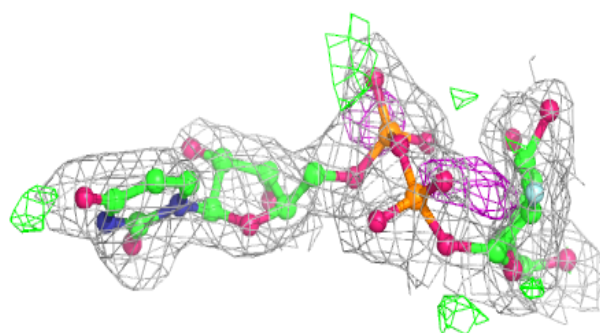
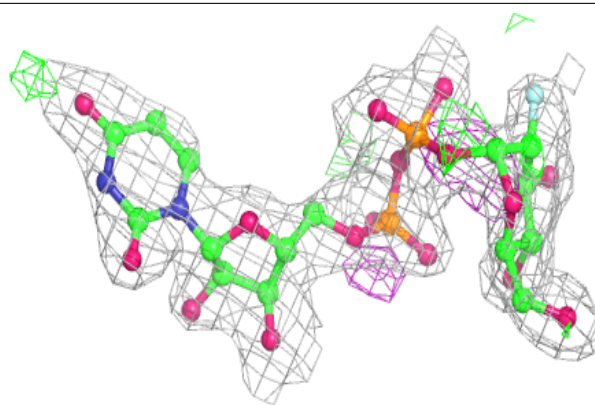
Unable to reproduce the depositors R factor - this section is therefore empty.

The following is a graphical depiction of the model fit to experimental electron density of all instances of the Ligand of Interest. In addition, ligands with molecular weight > 250 and outliers as shown on the geometry validation Tables will also be included. Each fit is shown from different orientation to approximate a three-dimensional view.



Electron density around U2F B 901:

$2mF_o-DF_c$ (at 0.7 rmsd) in gray
 mF_o-DF_c (at 3 rmsd) in purple (negative)
and green (positive)



6.5 Other polymers [i](#)

Unable to reproduce the depositors R factor - this section is therefore empty.