



Full wwPDB X-ray Structure Validation Report ⓘ

Aug 9, 2020 – 09:26 AM BST

PDB ID : 3UQD
Title : Crystal structure of the Phosphofructokinase-2 from Escherichia coli in complex with substrates and products
Authors : Pereira, H.M.; Caniuguir, A.; Baez, M.; Cabrera, R.; Babul, J.
Deposited on : 2011-11-20
Resolution : 2.14 Å(reported)

This is a Full wwPDB X-ray Structure Validation Report for a publicly released PDB entry.

We welcome your comments at validation@mail.wwpdb.org

A user guide is available at

<https://www.wwpdb.org/validation/2017/XrayValidationReportHelp>

with specific help available everywhere you see the ⓘ symbol.

The following versions of software and data (see [references ⓘ](#)) were used in the production of this report:

MolProbity	:	4.02b-467
Mogul	:	1.8.5 (274361), CSD as541be (2020)
Xtriage (Phenix)	:	1.13
EDS	:	2.13.1
buster-report	:	1.1.7 (2018)
Percentile statistics	:	20191225.v01 (using entries in the PDB archive December 25th 2019)
Refmac	:	5.8.0158
CCP4	:	7.0.044 (Gargrove)
Ideal geometry (proteins)	:	Engh & Huber (2001)
Ideal geometry (DNA, RNA)	:	Parkinson et al. (1996)
Validation Pipeline (wwPDB-VP)	:	2.13.1

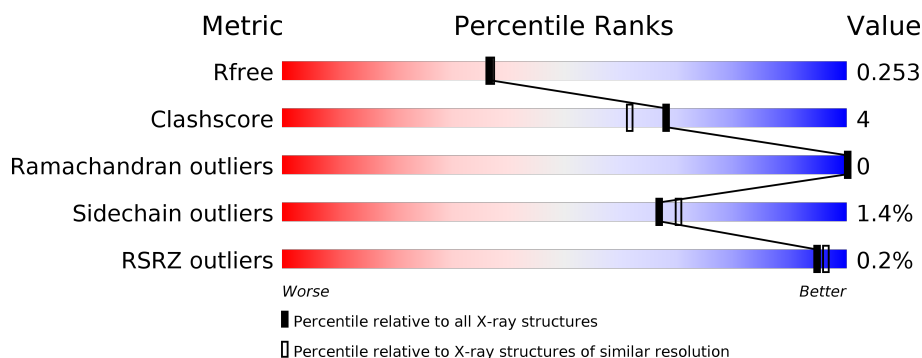
1 Overall quality at a glance

The following experimental techniques were used to determine the structure:

X-RAY DIFFRACTION

The reported resolution of this entry is 2.14 Å.

Percentile scores (ranging between 0-100) for global validation metrics of the entry are shown in the following graphic. The table shows the number of entries on which the scores are based.



Metric	Whole archive (#Entries)	Similar resolution (#Entries, resolution range(Å))
R_{free}	130704	2523 (2.16-2.12)
Clashscore	141614	2653 (2.16-2.12)
Ramachandran outliers	138981	2618 (2.16-2.12)
Sidechain outliers	138945	2617 (2.16-2.12)
RSRZ outliers	127900	2485 (2.16-2.12)

The table below summarises the geometric issues observed across the polymeric chains and their fit to the electron density. The red, orange, yellow and green segments on the lower bar indicate the fraction of residues that contain outliers for ≥ 3 , 2, 1 and 0 types of geometric quality criteria respectively. A grey segment represents the fraction of residues that are not modelled. The numeric value for each fraction is indicated below the corresponding segment, with a dot representing fractions $\leq 5\%$. The upper red bar (where present) indicates the fraction of residues that have poor fit to the electron density. The numeric value is given above the bar.

Mol	Chain	Length	Quality of chain
1	A	309	<div> <div></div> <div>91%9%</div> </div>
1	B	309	<div> <div></div> <div>92%8%</div> </div>
1	C	309	<div> <div>%</div> <div>90%10%</div> </div>
1	D	309	<div> <div></div> <div>89%11%</div> </div>

2 Entry composition [i](#)

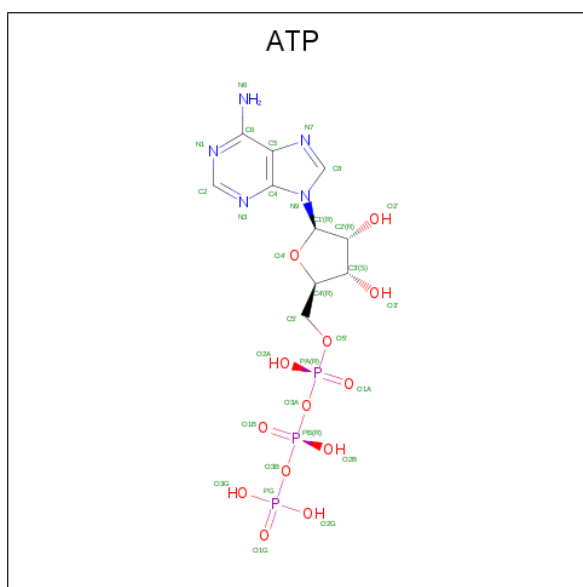
There are 7 unique types of molecules in this entry. The entry contains 10004 atoms, of which 0 are hydrogens and 0 are deuteriums.

In the tables below, the ZeroOcc column contains the number of atoms modelled with zero occupancy, the AltConf column contains the number of residues with at least one atom in alternate conformation and the Trace column contains the number of residues modelled with at most 2 atoms.

- Molecule 1 is a protein called 6-phosphofructokinase isozyme 2.

Mol	Chain	Residues	Atoms					ZeroOcc	AltConf	Trace
1	A	309	Total	C	N	O	S	0	0	0
			2273	1418	399	447	9			
1	B	309	Total	C	N	O	S	0	0	0
			2263	1412	394	448	9			
1	C	307	Total	C	N	O	S	0	1	0
			2258	1409	395	446	8			
1	D	309	Total	C	N	O	S	0	1	0
			2272	1417	398	448	9			

- Molecule 2 is ADENOSINE-5'-TRIPHOSPHATE (three-letter code: ATP) (formula: $C_{10}H_{16}N_5O_{13}P_3$).



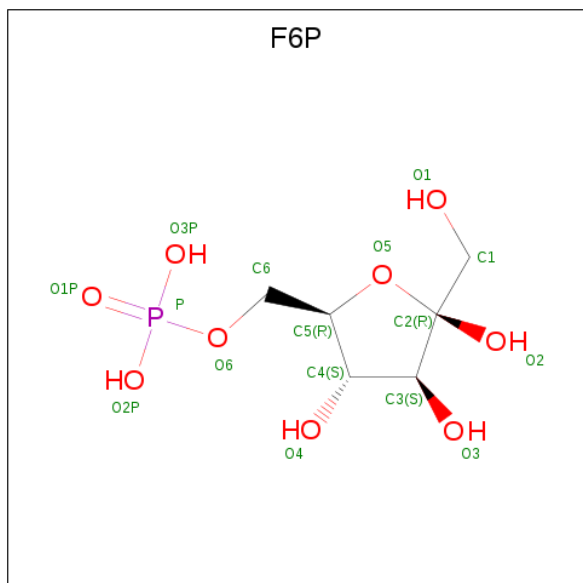
Mol	Chain	Residues	Atoms					ZeroOcc	AltConf
2	A	1	Total	C	N	O	P	0	0
			31	10	5	13	3		
2	B	1	Total	C	N	O	P	0	0
			31	10	5	13	3		

Continued on next page...

Continued from previous page...

Mol	Chain	Residues	Atoms					ZeroOcc	AltConf
2	C	1	Total	C	N	O	P	0	0
			31	10	5	13	3		
2	D	1	Total	C	N	O	P	0	0
			31	10	5	13	3		

- Molecule 3 is 6-O-phosphono-beta-D-fructofuranose (three-letter code: F6P) (formula: $C_6H_{13}O_9P$).

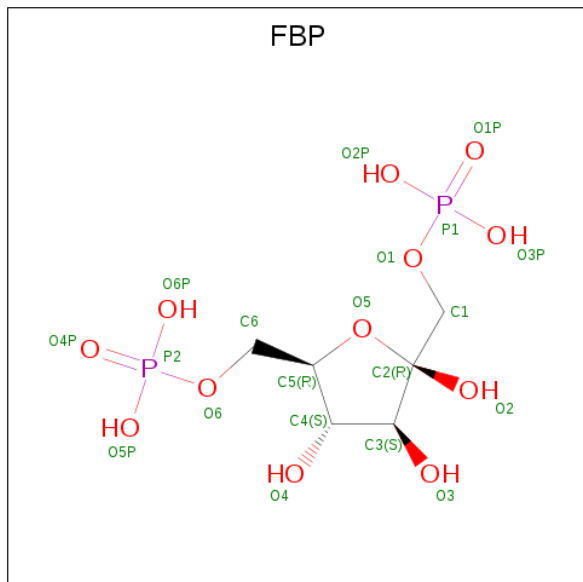


Mol	Chain	Residues	Atoms				ZeroOcc	AltConf
3	A	1	Total	C	O	P	0	0
			16	6	9	1		
3	D	1	Total	C	O	P	0	0
			16	6	9	1		

- Molecule 4 is MAGNESIUM ION (three-letter code: MG) (formula: Mg).

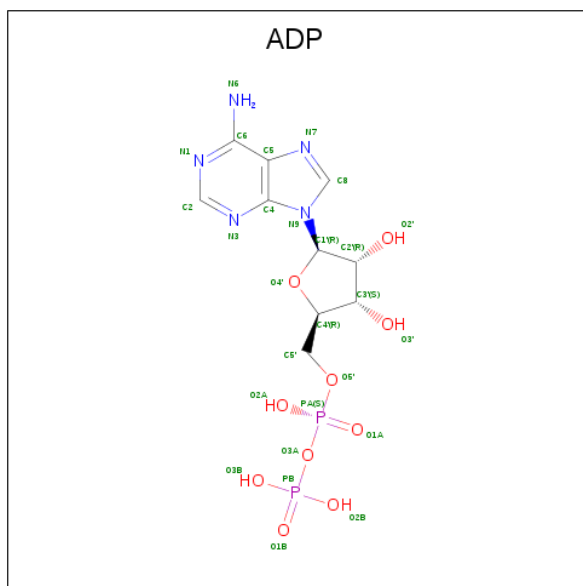
Mol	Chain	Residues	Atoms		ZeroOcc	AltConf
4	B	1	Total	Mg	0	0
			1	1		
4	A	2	Total	Mg	0	0
			2	2		
4	D	2	Total	Mg	0	0
			2	2		
4	C	1	Total	Mg	0	0
			1	1		

- Molecule 5 is 1,6-di-O-phosphono-beta-D-fructofuranose (three-letter code: FBP) (formula: $C_6H_{14}O_{12}P_2$).



Mol	Chain	Residues	Atoms				ZeroOcc	AltConf
5	B	1	Total	C	O	P	0	0
			20	6	12	2		
5	C	1	Total	C	O	P	0	0
			20	6	12	2		

- Molecule 6 is ADENOSINE-5'-DIPHOSPHATE (three-letter code: ADP) (formula: $C_{10}H_{15}N_5O_{10}P_2$).



Mol	Chain	Residues	Atoms					ZeroOcc	AltConf
6	B	1	Total	C	N	O	P	0	0
			27	10	5	10	2		
6	C	1	Total	C	N	O	P	0	0
			27	10	5	10	2		

- Molecule 7 is water.

Mol	Chain	Residues	Atoms		ZeroOcc	AltConf
7	A	199	Total	O	0	0
			199	199		
7	B	164	Total	O	0	0
			164	164		
7	C	153	Total	O	0	0
			153	153		
7	D	166	Total	O	0	0
			166	166		

3 Residue-property plots [i](#)

These plots are drawn for all protein, RNA, DNA and oligosaccharide chains in the entry. The first graphic for a chain summarises the proportions of the various outlier classes displayed in the second graphic. The second graphic shows the sequence view annotated by issues in geometry and electron density. Residues are color-coded according to the number of geometric quality criteria for which they contain at least one outlier: green = 0, yellow = 1, orange = 2 and red = 3 or more. A red dot above a residue indicates a poor fit to the electron density ($RSRZ > 2$). Stretches of 2 or more consecutive residues without any outlier are shown as a green connector. Residues present in the sample, but not in the model, are shown in grey.

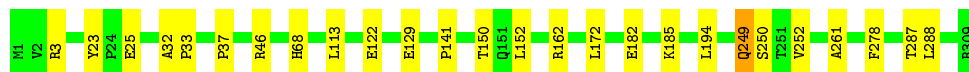
- Molecule 1: 6-phosphofructokinase isozyme 2

Chain A:  91% 9%




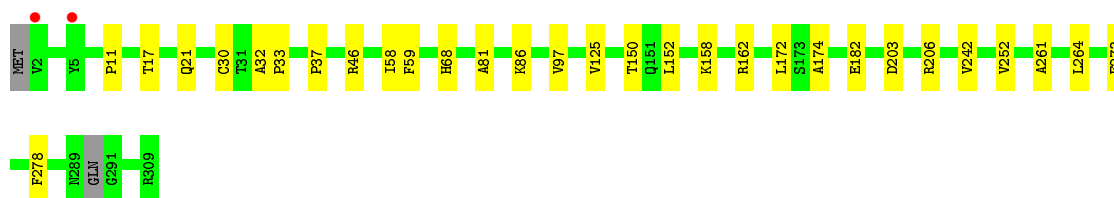
- Molecule 1: 6-phosphofructokinase isozyme 2

Chain B:  92% 8%




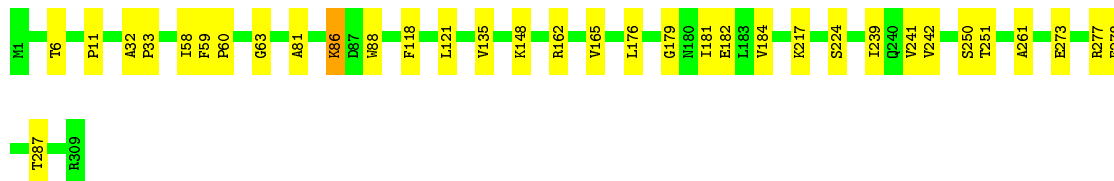
- Molecule 1: 6-phosphofructokinase isozyme 2

Chain C:  90% 10% 1%



- Molecule 1: 6-phosphofructokinase isozyme 2

Chain D:  89% 11%



4 Data and refinement statistics

Property	Value	Source
Space group	C 2 2 21	Depositor
Cell constants a, b, c, α , β , γ	69.89Å 155.19Å 224.99Å 90.00° 90.00° 90.00°	Depositor
Resolution (Å)	19.79 – 2.14 19.79 – 2.14	Depositor EDS
% Data completeness (in resolution range)	96.3 (19.79-2.14) 96.3 (19.79-2.14)	Depositor EDS
R_{merge}	0.09	Depositor
R_{sym}	(Not available)	Depositor
$\langle I/\sigma(I) \rangle$ ¹	1.54 (at 2.15Å)	Xtriage
Refinement program	PHENIX 1.7.2 _869	Depositor
R, R_{free}	0.195 , 0.255 0.195 , 0.253	Depositor DCC
R_{free} test set	3247 reflections (5.00%)	wwPDB-VP
Wilson B-factor (Å ²)	32.1	Xtriage
Anisotropy	0.350	Xtriage
Bulk solvent k_{sol} (e/Å ³), B_{sol} (Å ²)	0.31 , 50.0	EDS
L-test for twinning ²	$\langle L \rangle = 0.45$, $\langle L^2 \rangle = 0.28$	Xtriage
Estimated twinning fraction	No twinning to report.	Xtriage
F_o, F_c correlation	0.95	EDS
Total number of atoms	10004	wwPDB-VP
Average B, all atoms (Å ²)	38.0	wwPDB-VP

Xtriage's analysis on translational NCS is as follows: *The largest off-origin peak in the Patterson function is 3.29% of the height of the origin peak. No significant pseudotranslation is detected.*

¹Intensities estimated from amplitudes.

²Theoretical values of $\langle |L| \rangle$, $\langle L^2 \rangle$ for acentric reflections are 0.5, 0.333 respectively for untwinned datasets, and 0.375, 0.2 for perfectly twinned datasets.

5 Model quality [i](#)

5.1 Standard geometry [i](#)

Bond lengths and bond angles in the following residue types are not validated in this section: MG, FBP, ATP, ADP, F6P

The Z score for a bond length (or angle) is the number of standard deviations the observed value is removed from the expected value. A bond length (or angle) with $|Z| > 5$ is considered an outlier worth inspection. RMSZ is the root-mean-square of all Z scores of the bond lengths (or angles).

Mol	Chain	Bond lengths		Bond angles	
		RMSZ	$\# Z > 5$	RMSZ	$\# Z > 5$
1	A	0.25	0/2305	0.44	0/3130
1	B	0.25	0/2295	0.42	0/3119
1	C	0.24	0/2292	0.43	0/3113
1	D	0.24	0/2307	0.43	0/3134
All	All	0.24	0/9199	0.43	0/12496

There are no bond length outliers.

There are no bond angle outliers.

There are no chirality outliers.

There are no planarity outliers.

5.2 Too-close contacts [i](#)

In the following table, the Non-H and H(model) columns list the number of non-hydrogen atoms and hydrogen atoms in the chain respectively. The H(added) column lists the number of hydrogen atoms added and optimized by MolProbity. The Clashes column lists the number of clashes within the asymmetric unit, whereas Symm-Clashes lists symmetry related clashes.

Mol	Chain	Non-H	H(model)	H(added)	Clashes	Symm-Clashes
1	A	2273	0	2309	14	0
1	B	2263	0	2285	15	0
1	C	2258	0	2283	13	0
1	D	2272	0	2303	20	0
2	A	31	0	12	0	0
2	B	31	0	12	3	0
2	C	31	0	11	2	0
2	D	31	0	11	1	0
3	A	16	0	11	0	0

Continued on next page...

Continued from previous page...

Mol	Chain	Non-H	H(model)	H(added)	Clashes	Symm-Clashes
3	D	16	0	11	2	0
4	A	2	0	0	0	0
4	B	1	0	0	0	0
4	C	1	0	0	0	0
4	D	2	0	0	0	0
5	B	20	0	10	2	0
5	C	20	0	10	0	0
6	B	27	0	12	2	0
6	C	27	0	12	1	0
7	A	199	0	0	1	0
7	B	164	0	0	8	0
7	C	153	0	0	1	0
7	D	166	0	0	2	0
All	All	10004	0	9292	71	0

The all-atom clashscore is defined as the number of clashes found per 1000 atoms (including hydrogen atoms). The all-atom clashscore for this structure is 4.

All (71) close contacts within the same asymmetric unit are listed below, sorted by their clash magnitude.

Atom-1	Atom-2	Interatomic distance (Å)	Clash overlap (Å)
2:B:404:ATP:O2'	7:B:561:HOH:O	1.59	1.19
1:C:242:VAL:HG21	1:D:242:VAL:HG21	1.53	0.89
1:A:60:PRO:HG3	1:A:121:LEU:HD11	1.66	0.77
1:D:60:PRO:HG3	1:D:121:LEU:HD11	1.66	0.76
1:D:176:LEU:HD21	1:D:184:VAL:HG11	1.69	0.74
1:B:25:GLU:OE1	7:B:617:HOH:O	2.08	0.71
6:C:403:ADP:O3B	7:C:611:HOH:O	2.08	0.70
6:B:402:ADP:O2A	7:B:640:HOH:O	2.14	0.65
1:A:116:ASP:OD1	1:A:119:ARG:NH1	2.24	0.64
1:C:125:VAL:HG11	1:C:152:LEU:HD21	1.80	0.64
1:B:122:GLU:HG3	1:B:152:LEU:HD13	1.80	0.63
1:D:239:ILE:HD12	1:D:273:GLU:HA	1.80	0.63
1:C:162:ARG:HB3	1:C:182:GLU:HG3	1.80	0.63
1:A:11:PRO:HG3	1:A:59:PHE:HB2	1.82	0.61
1:D:165:VAL:HB	1:D:184:VAL:HG12	1.81	0.61
1:A:195:VAL:HG21	1:A:208:ALA:HB1	1.84	0.58
1:C:37:PRO:HB2	1:C:46:ARG:HD2	1.86	0.57
5:B:401:FBP:O1P	7:B:541:HOH:O	2.18	0.57
6:B:402:ADP:O3B	7:B:541:HOH:O	2.18	0.57
3:D:402:F6P:H12	7:D:654:HOH:O	2.04	0.56

Continued on next page...

Continued from previous page...

Atom-1	Atom-2	Interatomic distance (Å)	Clash overlap (Å)
1:B:37:PRO:HB2	1:B:46:ARG:HD2	1.88	0.55
1:A:162:ARG:HB3	1:A:182:GLU:HG3	1.90	0.54
1:C:21:GLN:HA	1:C:97:VAL:HG13	1.91	0.53
1:B:122:GLU:OE1	7:B:629:HOH:O	2.19	0.52
1:C:203:ASP:OD2	1:C:206:ARG:NH2	2.44	0.51
1:D:6:THR:HG22	1:D:135:VAL:HB	1.92	0.51
1:C:150:THR:HG21	1:C:174:ALA:HB1	1.92	0.50
2:B:404:ATP:O4'	2:B:404:ATP:O1A	2.30	0.50
1:D:162:ARG:HB3	1:D:182:GLU:HG3	1.94	0.50
1:D:241:VAL:HG21	1:D:277:ARG:HG2	1.93	0.49
2:C:401:ATP:O4'	2:C:401:ATP:O1A	2.30	0.49
1:A:17:THR:OG1	1:A:30:CYS:HB3	2.11	0.49
1:D:86:LYS:HA	1:D:86:LYS:HE3	1.95	0.49
1:B:162:ARG:HB3	1:B:182:GLU:HG3	1.94	0.48
1:B:261:ALA:HB1	1:B:278:PHE:CD2	2.48	0.47
1:A:247:LYS:HG2	7:B:615:HOH:O	2.15	0.47
1:D:63:GLY:HA3	1:D:88:TRP:CD2	2.50	0.47
1:C:261:ALA:HB1	1:C:278:PHE:CD2	2.51	0.46
1:D:11:PRO:HG3	1:D:59:PHE:HB2	1.96	0.46
3:D:402:F6P:O1P	7:D:502:HOH:O	2.21	0.46
1:A:122:GLU:HG3	1:A:152:LEU:HD13	1.98	0.46
1:B:113:LEU:HD12	1:B:141:PRO:HG2	1.97	0.46
2:C:401:ATP:O2A	2:C:401:ATP:O3B	2.34	0.46
1:C:11:PRO:HG3	1:C:59:PHE:HB2	1.98	0.45
1:D:179:GLY:HA2	1:D:217:LYS:HA	1.97	0.45
1:B:23:TYR:CD1	2:B:404:ATP:H1'	2.51	0.45
1:A:261:ALA:HB1	1:A:278:PHE:CD2	2.52	0.45
1:D:250:SER:O	1:D:287:THR:HA	2.16	0.45
1:B:185:LYS:N	7:B:646:HOH:O	2.42	0.44
1:D:224[A]:SER:OG	2:D:401:ATP:H5'2	2.17	0.44
1:A:265:LYS:NZ	7:A:609:HOH:O	2.51	0.43
1:D:32:ALA:HA	1:D:33:PRO:HD3	1.85	0.43
1:D:251:THR:HA	1:D:287:THR:HG22	2.01	0.43
1:A:176:LEU:HD21	1:A:184:VAL:HG11	1.99	0.43
1:B:172:LEU:HG	1:B:194:LEU:HD21	2.01	0.43
1:C:32:ALA:HA	1:C:33:PRO:HD3	1.88	0.42
1:D:176:LEU:HD23	1:D:181:ILE:HG13	2.01	0.42
1:C:58:ILE:HG12	1:C:81:ALA:HB3	2.01	0.42
1:C:158:LYS:HB3	1:C:158:LYS:HE2	1.89	0.42
1:A:50:HIS:O	1:A:297:HIS:HB2	2.20	0.41
1:A:195:VAL:HG12	1:A:197:ARG:HG2	2.01	0.41

Continued on next page...

Continued from previous page...

Atom-1	Atom-2	Interatomic distance (Å)	Clash overlap (Å)
1:D:118:PHE:CE2	1:D:148:LYS:HB3	2.55	0.41
1:B:3:ARG:HD3	1:B:129:GLU:OE2	2.20	0.41
1:D:261:ALA:HB1	1:D:278:PHE:CD2	2.55	0.41
1:B:249:GLN:HB3	1:B:250:SER:H	1.61	0.41
1:C:17:THR:OG1	1:C:30:CYS:HB3	2.21	0.41
1:A:145:LYS:HE2	1:A:145:LYS:HB3	1.85	0.40
1:B:252:VAL:HG13	5:B:401:FBP:H12	2.02	0.40
1:B:32:ALA:HA	1:B:33:PRO:HD3	1.83	0.40
1:D:58:ILE:HG12	1:D:81:ALA:HB3	2.03	0.40
1:B:250:SER:O	1:B:287:THR:HA	2.22	0.40

There are no symmetry-related clashes.

5.3 Torsion angles [i](#)

5.3.1 Protein backbone [i](#)

In the following table, the Percentiles column shows the percent Ramachandran outliers of the chain as a percentile score with respect to all X-ray entries followed by that with respect to entries of similar resolution.

The Analysed column shows the number of residues for which the backbone conformation was analysed, and the total number of residues.

Mol	Chain	Analysed	Favoured	Allowed	Outliers	Percentiles	
1	A	307/309 (99%)	304 (99%)	3 (1%)	0	100	100
1	B	307/309 (99%)	301 (98%)	6 (2%)	0	100	100
1	C	304/309 (98%)	294 (97%)	10 (3%)	0	100	100
1	D	308/309 (100%)	302 (98%)	6 (2%)	0	100	100
All	All	1226/1236 (99%)	1201 (98%)	25 (2%)	0	100	100

There are no Ramachandran outliers to report.

5.3.2 Protein sidechains [i](#)

In the following table, the Percentiles column shows the percent sidechain outliers of the chain as a percentile score with respect to all X-ray entries followed by that with respect to entries of similar resolution.

The Analysed column shows the number of residues for which the sidechain conformation was analysed, and the total number of residues.

Mol	Chain	Analysed	Rotameric	Outliers	Percentiles	
1	A	243/244 (100%)	240 (99%)	3 (1%)	71	74
1	B	241/244 (99%)	237 (98%)	4 (2%)	60	63
1	C	241/244 (99%)	235 (98%)	6 (2%)	47	47
1	D	243/244 (100%)	242 (100%)	1 (0%)	91	93
All	All	968/976 (99%)	954 (99%)	14 (1%)	67	70

All (14) residues with a non-rotameric sidechain are listed below:

Mol	Chain	Res	Type
1	A	68	HIS
1	A	252	VAL
1	A	264	LEU
1	B	68	HIS
1	B	150	THR
1	B	249	GLN
1	B	288	LEU
1	C	68	HIS
1	C	86	LYS
1	C	172	LEU
1	C	252	VAL
1	C	264	LEU
1	C	273	GLU
1	D	86	LYS

Some sidechains can be flipped to improve hydrogen bonding and reduce clashes. There are no such sidechains identified.

5.3.3 RNA ⓘ

There are no RNA molecules in this entry.

5.4 Non-standard residues in protein, DNA, RNA chains ⓘ

There are no non-standard protein/DNA/RNA residues in this entry.

5.5 Carbohydrates [i](#)

There are no monosaccharides in this entry.

5.6 Ligand geometry [i](#)

Of 16 ligands modelled in this entry, 6 are monoatomic - leaving 10 for Mogul analysis.

In the following table, the Counts columns list the number of bonds (or angles) for which Mogul statistics could be retrieved, the number of bonds (or angles) that are observed in the model and the number of bonds (or angles) that are defined in the Chemical Component Dictionary. The Link column lists molecule types, if any, to which the group is linked. The Z score for a bond length (or angle) is the number of standard deviations the observed value is removed from the expected value. A bond length (or angle) with $|Z| > 2$ is considered an outlier worth inspection. RMSZ is the root-mean-square of all Z scores of the bond lengths (or angles).

Mol	Type	Chain	Res	Link	Bond lengths			Bond angles		
					Counts	RMSZ	# Z > 2	Counts	RMSZ	# Z > 2
2	ATP	A	401	4	26,33,33	1.65	6 (23%)	31,52,52	1.46	5 (16%)
5	FBP	C	402	-	18,20,20	1.47	4 (22%)	23,32,32	0.83	0
3	F6P	A	402	-	15,16,16	0.99	1 (6%)	17,25,25	0.85	0
6	ADP	C	403	4	24,29,29	0.93	1 (4%)	29,45,45	1.25	3 (10%)
3	F6P	D	402	-	15,16,16	0.62	0	17,25,25	0.88	0
5	FBP	B	401	-	18,20,20	1.62	6 (33%)	23,32,32	1.14	1 (4%)
2	ATP	D	401	4	26,33,33	1.71	7 (26%)	31,52,52	1.37	3 (9%)
6	ADP	B	402	4	24,29,29	0.97	1 (4%)	29,45,45	1.18	3 (10%)
2	ATP	B	404	4	26,33,33	1.65	6 (23%)	31,52,52	1.65	6 (19%)
2	ATP	C	401	-	26,33,33	1.71	7 (26%)	31,52,52	1.60	5 (16%)

In the following table, the Chirals column lists the number of chiral outliers, the number of chiral centers analysed, the number of these observed in the model and the number defined in the Chemical Component Dictionary. Similar counts are reported in the Torsion and Rings columns. '-' means no outliers of that kind were identified.

Mol	Type	Chain	Res	Link	Chirals	Torsions	Rings
2	ATP	A	401	4	-	1/18/38/38	0/3/3/3
5	FBP	C	402	-	-	4/13/32/32	0/1/1/1
3	F6P	A	402	-	-	6/9/28/28	0/1/1/1
6	ADP	C	403	4	-	2/12/32/32	0/3/3/3
3	F6P	D	402	-	-	3/9/28/28	0/1/1/1
5	FBP	B	401	-	-	4/13/32/32	0/1/1/1

Continued on next page...

Continued from previous page...

Mol	Type	Chain	Res	Link	Chirals	Torsions	Rings
2	ATP	D	401	4	-	1/18/38/38	0/3/3/3
6	ADP	B	402	4	-	1/12/32/32	0/3/3/3
2	ATP	B	404	4	-	4/18/38/38	0/3/3/3
2	ATP	C	401	-	-	5/18/38/38	0/3/3/3

All (39) bond length outliers are listed below:

Mol	Chain	Res	Type	Atoms	Z	Observed(Å)	Ideal(Å)
2	B	404	ATP	C6-N6	4.59	1.50	1.34
2	C	401	ATP	C6-N6	4.59	1.50	1.34
2	A	401	ATP	C6-N6	4.59	1.50	1.34
2	D	401	ATP	C6-N6	4.53	1.50	1.34
2	C	401	ATP	C2'-C1'	-3.75	1.48	1.53
2	A	401	ATP	C2'-C1'	-3.51	1.48	1.53
2	B	404	ATP	C2'-C1'	-3.48	1.48	1.53
2	D	401	ATP	C2'-C1'	-3.45	1.48	1.53
5	C	402	FBP	C4-C5	-3.09	1.45	1.53
5	B	401	FBP	O5-C2	-2.99	1.38	1.43
5	B	401	FBP	C4-C5	-2.96	1.45	1.53
5	C	402	FBP	O5-C2	-2.87	1.38	1.43
3	A	402	F6P	O2-C2	2.86	1.45	1.40
2	D	401	ATP	O2'-C2'	-2.63	1.36	1.43
2	C	401	ATP	O2'-C2'	-2.61	1.36	1.43
5	B	401	FBP	P2-O4P	2.60	1.58	1.50
2	B	404	ATP	O2'-C2'	-2.55	1.37	1.43
5	C	402	FBP	O3-C3	-2.50	1.37	1.42
6	C	403	ADP	C5-C4	2.45	1.47	1.40
2	D	401	ATP	C2'-C3'	-2.45	1.46	1.53
2	B	404	ATP	C3'-C4'	-2.39	1.46	1.53
2	A	401	ATP	C2'-C3'	-2.37	1.46	1.53
6	B	402	ADP	C5-C4	2.36	1.47	1.40
2	D	401	ATP	O3'-C3'	-2.35	1.37	1.43
5	B	401	FBP	P1-O1P	2.34	1.58	1.50
2	C	401	ATP	C2'-C3'	-2.33	1.47	1.53
2	C	401	ATP	PB-O1B	2.33	1.59	1.50
2	A	401	ATP	O2'-C2'	-2.31	1.37	1.43
5	B	401	FBP	O3-C3	-2.31	1.38	1.42
2	C	401	ATP	C3'-C4'	-2.30	1.47	1.53
2	B	404	ATP	O3'-C3'	-2.30	1.37	1.43
2	C	401	ATP	O3'-C3'	-2.27	1.37	1.43
2	B	404	ATP	C2'-C3'	-2.27	1.47	1.53
2	A	401	ATP	C3'-C4'	-2.26	1.47	1.53

Continued on next page...

Continued from previous page...

Mol	Chain	Res	Type	Atoms	Z	Observed(Å)	Ideal(Å)
2	A	401	ATP	O3'-C3'	-2.20	1.37	1.43
2	D	401	ATP	PB-O1B	2.20	1.58	1.50
2	D	401	ATP	C3'-C4'	-2.15	1.47	1.53
5	C	402	FBP	C4-C3	-2.09	1.44	1.52
5	B	401	FBP	C4-C3	-2.04	1.44	1.52

All (26) bond angle outliers are listed below:

Mol	Chain	Res	Type	Atoms	Z	Observed(°)	Ideal(°)
2	A	401	ATP	N3-C2-N1	-4.88	121.05	128.68
2	B	404	ATP	N3-C2-N1	-4.64	121.42	128.68
2	C	401	ATP	N3-C2-N1	-4.56	121.55	128.68
2	D	401	ATP	N3-C2-N1	-4.48	121.67	128.68
2	C	401	ATP	PB-O3B-PG	-3.71	120.11	132.83
2	B	404	ATP	PA-O3A-PB	-3.62	120.39	132.83
2	C	401	ATP	PA-O3A-PB	-3.50	120.81	132.83
2	B	404	ATP	C3'-C2'-C1'	3.36	106.04	100.98
2	B	404	ATP	PB-O3B-PG	-3.23	121.73	132.83
6	C	403	ADP	N3-C2-N1	-3.17	123.72	128.68
6	B	402	ADP	N3-C2-N1	-3.14	123.76	128.68
5	B	401	FBP	O2P-P1-O1	2.96	114.60	106.73
6	C	403	ADP	PA-O3A-PB	-2.78	123.30	132.83
6	B	402	ADP	C4-C5-N7	-2.61	106.68	109.40
6	B	402	ADP	PA-O3A-PB	-2.55	124.08	132.83
2	D	401	ATP	PB-O3B-PG	-2.54	124.10	132.83
2	A	401	ATP	PB-O3B-PG	-2.51	124.21	132.83
2	D	401	ATP	O5'-C5'-C4'	2.48	117.53	108.99
2	A	401	ATP	O5'-C5'-C4'	2.41	117.28	108.99
2	C	401	ATP	O5'-C5'-C4'	2.39	117.22	108.99
2	A	401	ATP	O2G-PG-O3B	2.35	112.52	104.64
2	B	404	ATP	O5'-C5'-C4'	2.32	116.98	108.99
6	C	403	ADP	C4-C5-N7	-2.30	107.01	109.40
2	C	401	ATP	C4-C5-N7	-2.26	107.04	109.40
2	A	401	ATP	PA-O3A-PB	-2.22	125.20	132.83
2	B	404	ATP	C4-C5-N7	-2.12	107.19	109.40

There are no chirality outliers.

All (31) torsion outliers are listed below:

Mol	Chain	Res	Type	Atoms
3	A	402	F6P	O1-C1-C2-C3
3	A	402	F6P	O1-C1-C2-O5

Continued on next page...

Continued from previous page...

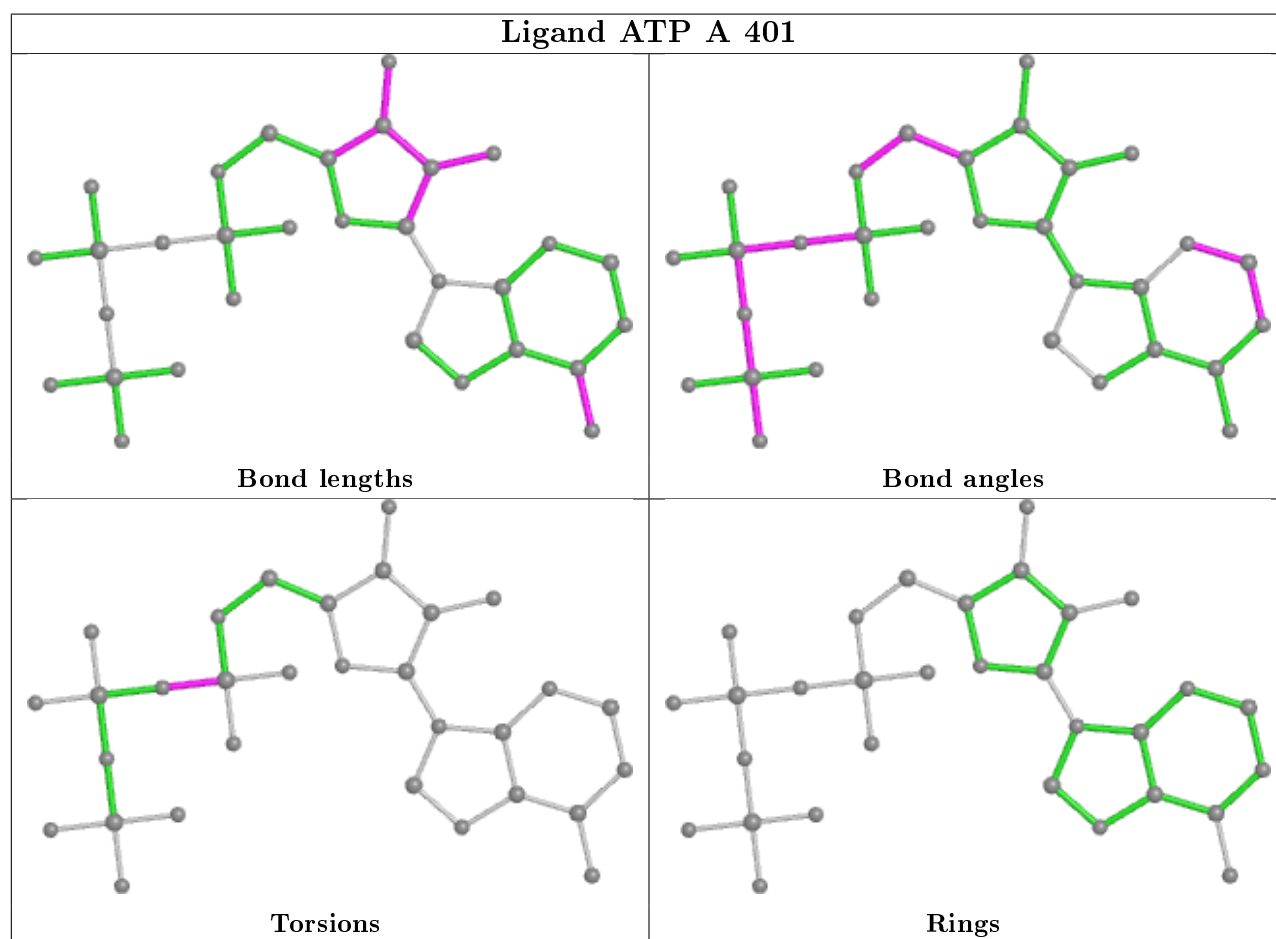
Mol	Chain	Res	Type	Atoms
3	A	402	F6P	C4-C5-C6-O6
3	A	402	F6P	O5-C5-C6-O6
3	A	402	F6P	C6-O6-P-O2P
6	C	403	ADP	PA-O3A-PB-O2B
5	B	401	FBP	C1-O1-P1-O3P
5	C	402	FBP	O1-C1-C2-O2
5	C	402	FBP	C6-O6-P2-O4P
5	C	402	FBP	C6-O6-P2-O6P
2	B	404	ATP	C5'-O5'-PA-O2A
2	B	404	ATP	C5'-O5'-PA-O3A
2	C	401	ATP	C5'-O5'-PA-O1A
2	C	401	ATP	O4'-C4'-C5'-O5'
2	C	401	ATP	C3'-C4'-C5'-O5'
2	C	401	ATP	C4'-C5'-O5'-PA
3	A	402	F6P	O1-C1-C2-O2
2	B	404	ATP	C4'-C5'-O5'-PA
3	D	402	F6P	O1-C1-C2-C3
5	B	401	FBP	C1-O1-P1-O2P
5	C	402	FBP	C6-O6-P2-O5P
2	C	401	ATP	C5'-O5'-PA-O3A
3	D	402	F6P	O1-C1-C2-O2
5	B	401	FBP	C1-O1-P1-O1P
2	B	404	ATP	PB-O3A-PA-O1A
5	B	401	FBP	O1-C1-C2-C3
6	C	403	ADP	PA-O3A-PB-O1B
6	B	402	ADP	PA-O3A-PB-O2B
3	D	402	F6P	O1-C1-C2-O5
2	A	401	ATP	PB-O3A-PA-O1A
2	D	401	ATP	PB-O3A-PA-O2A

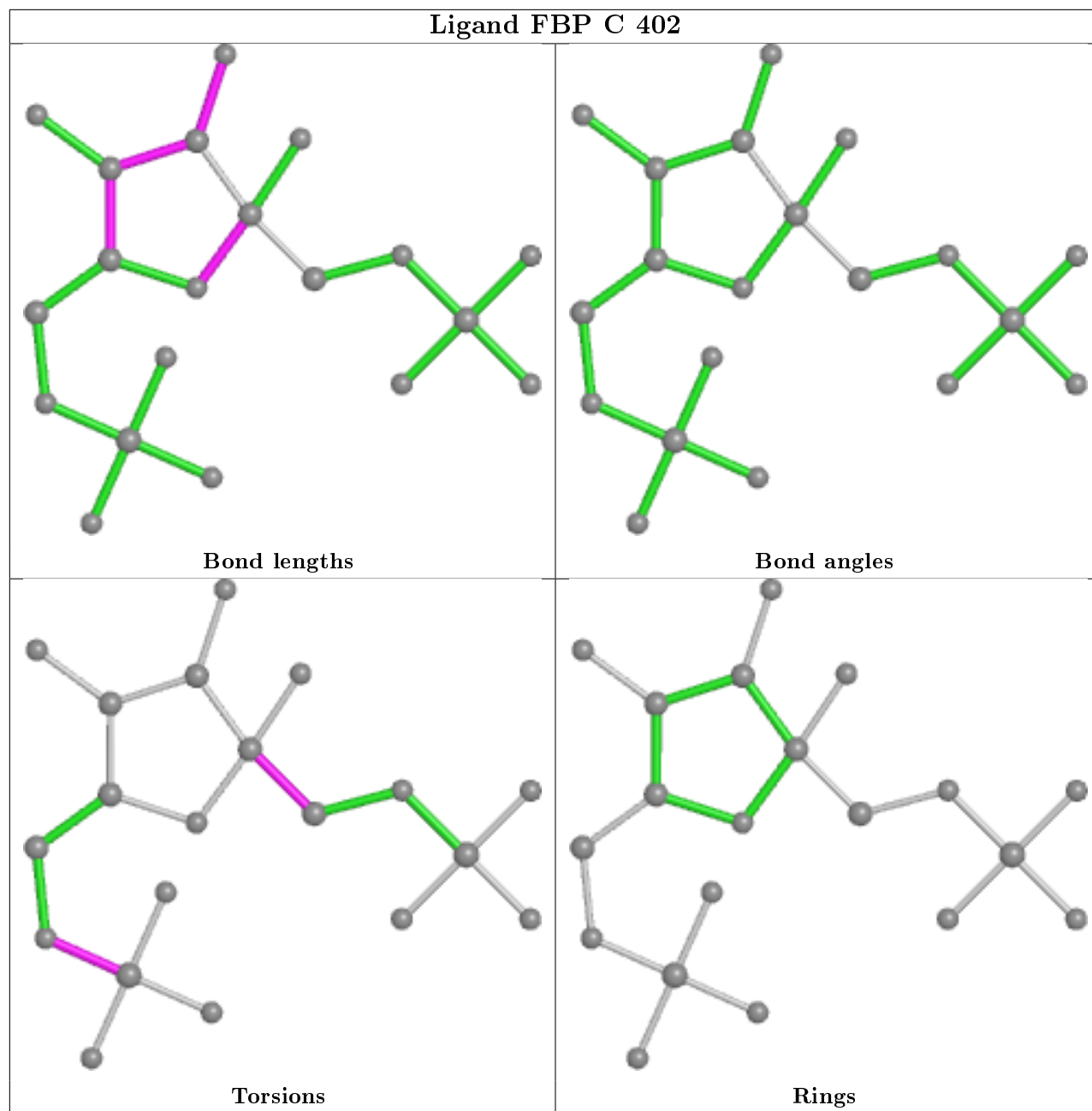
There are no ring outliers.

7 monomers are involved in 13 short contacts:

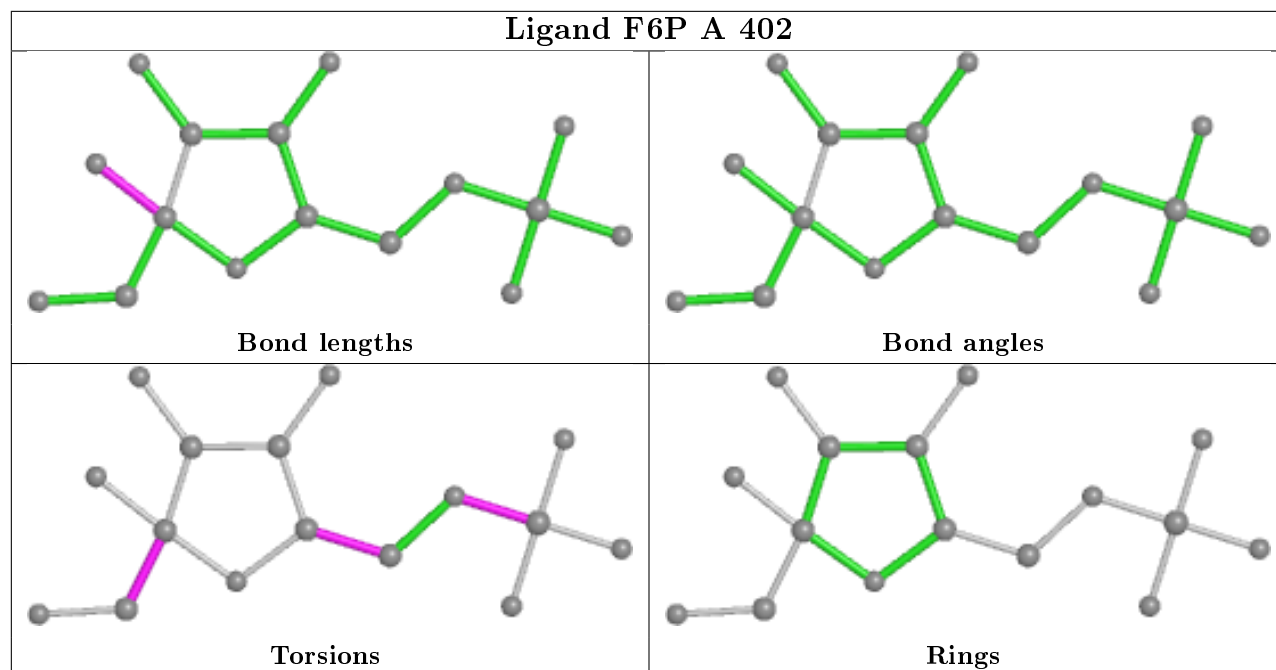
Mol	Chain	Res	Type	Clashes	Symm-Clashes
6	C	403	ADP	1	0
3	D	402	F6P	2	0
5	B	401	FBP	2	0
2	D	401	ATP	1	0
6	B	402	ADP	2	0
2	B	404	ATP	3	0
2	C	401	ATP	2	0

The following is a two-dimensional graphical depiction of Mogul quality analysis of bond lengths, bond angles, torsion angles, and ring geometry for all instances of the Ligand of Interest. In addition, ligands with molecular weight > 250 and outliers as shown on the validation Tables will also be included. For torsion angles, if less than 5% of the Mogul distribution of torsion angles is within 10 degrees of the torsion angle in question, then that torsion angle is considered an outlier. Any bond that is central to one or more torsion angles identified as an outlier by Mogul will be highlighted in the graph. For rings, the root-mean-square deviation (RMSD) between the ring in question and similar rings identified by Mogul is calculated over all ring torsion angles. If the average RMSD is greater than 60 degrees and the minimal RMSD between the ring in question and any Mogul-identified rings is also greater than 60 degrees, then that ring is considered an outlier. The outliers are highlighted in purple. The color gray indicates Mogul did not find sufficient equivalents in the CSD to analyse the geometry.

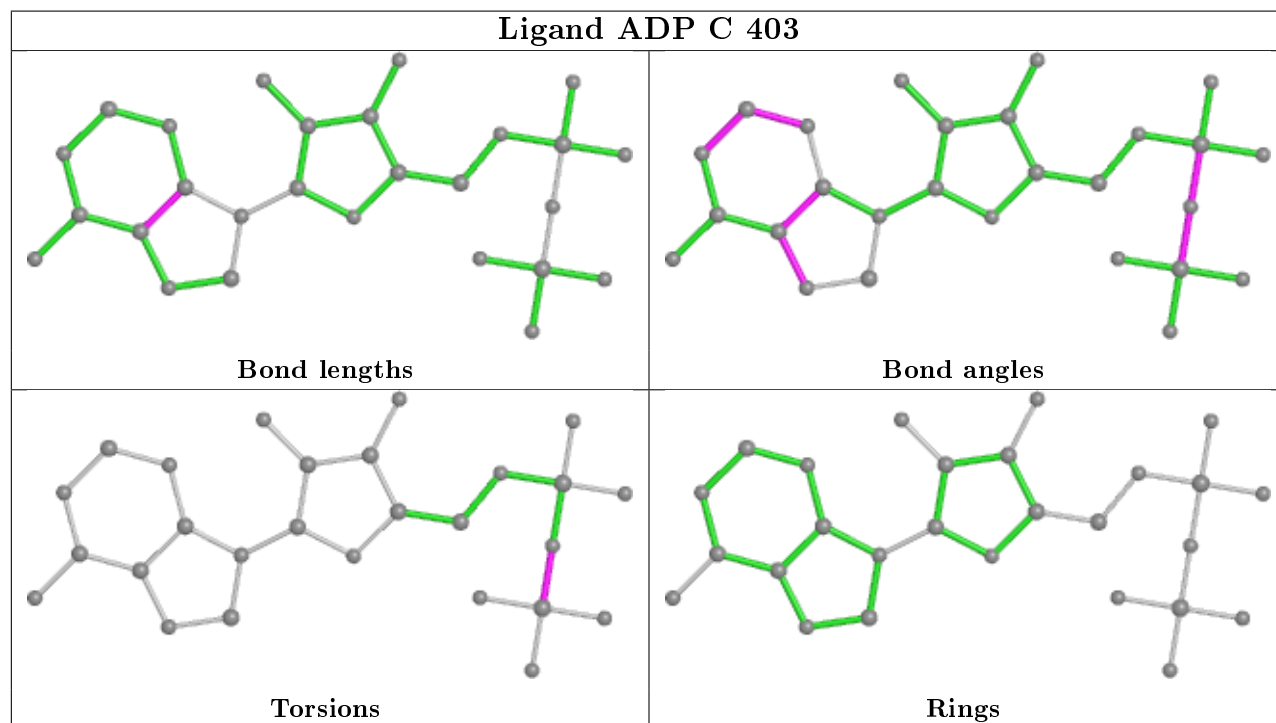


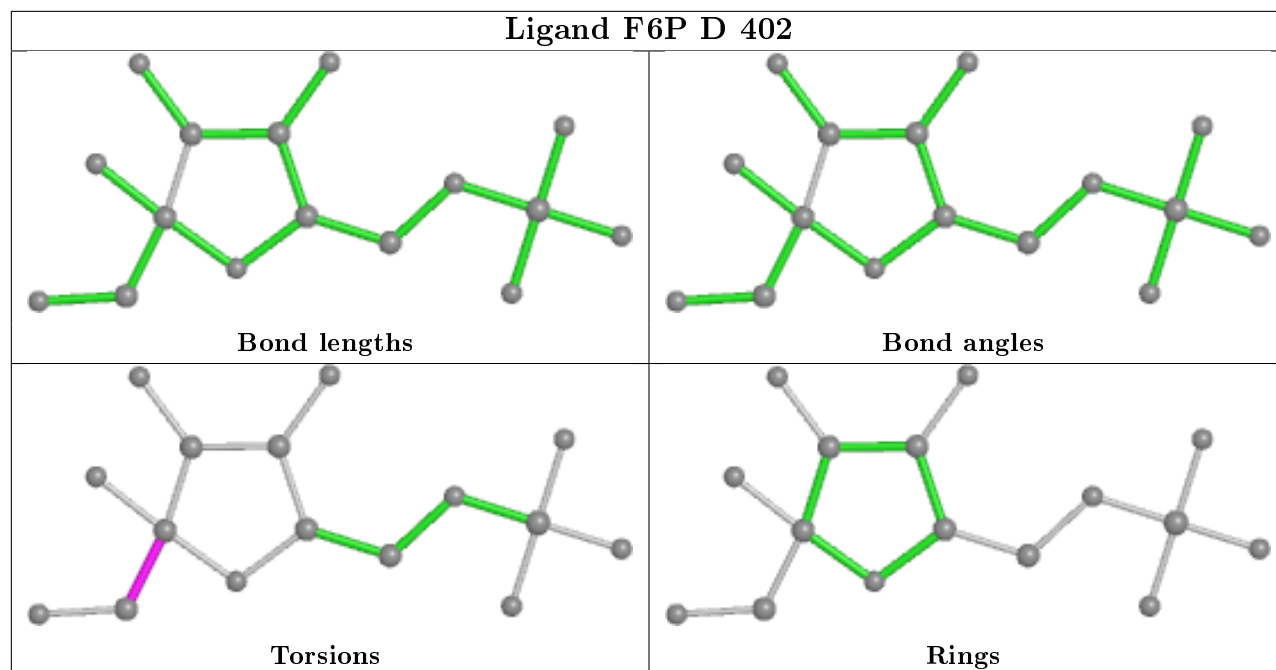


Ligand F6P A 402

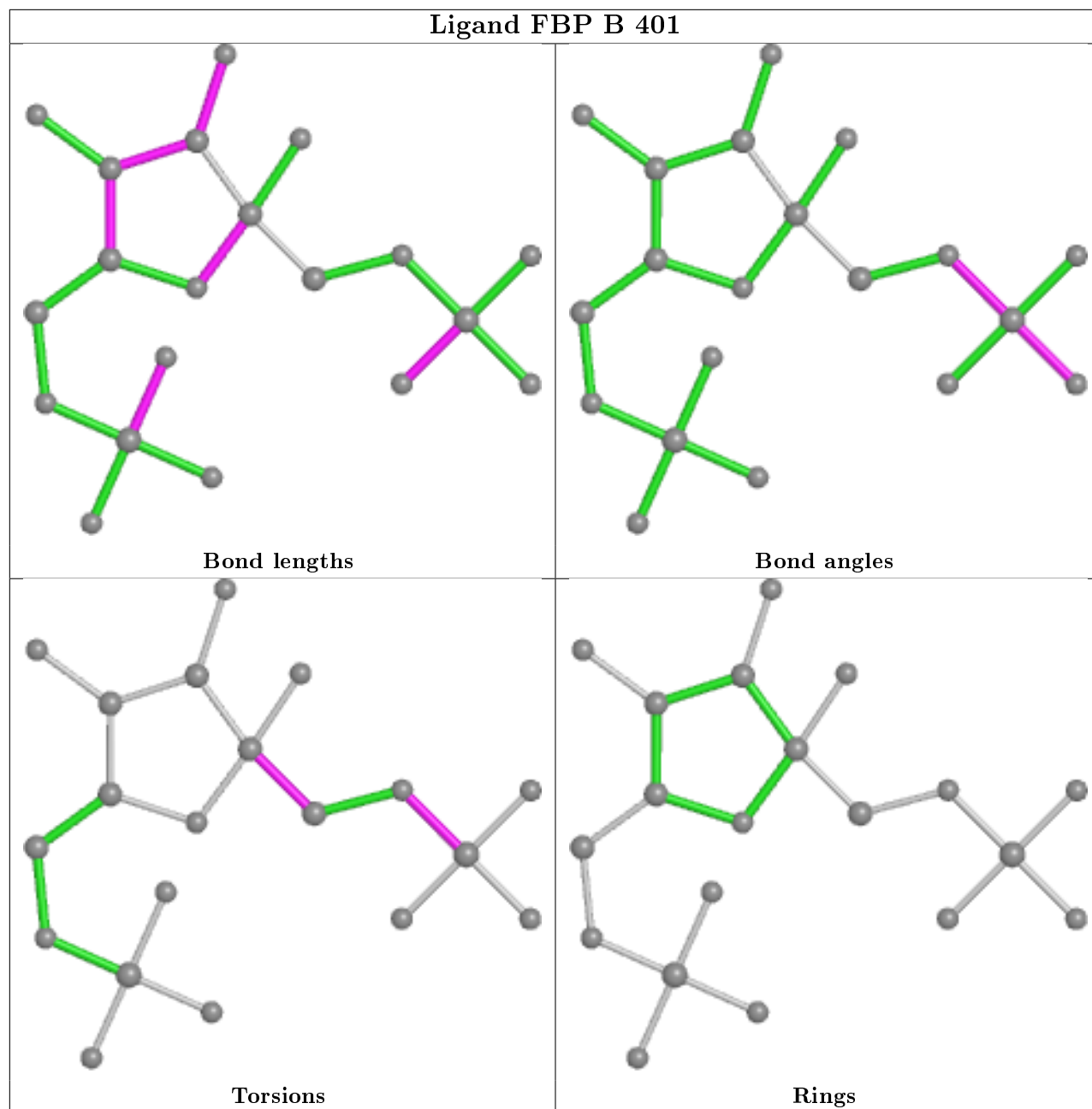


Ligand ADP C 403

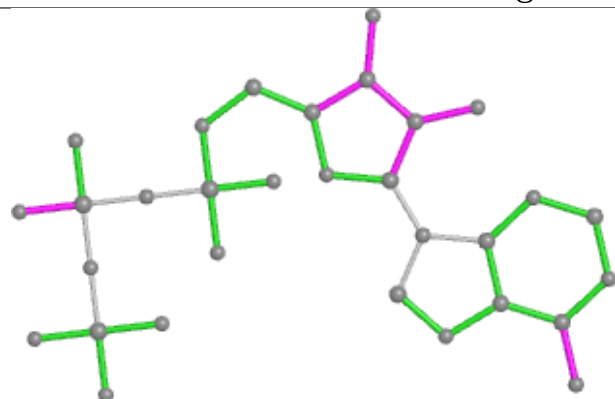




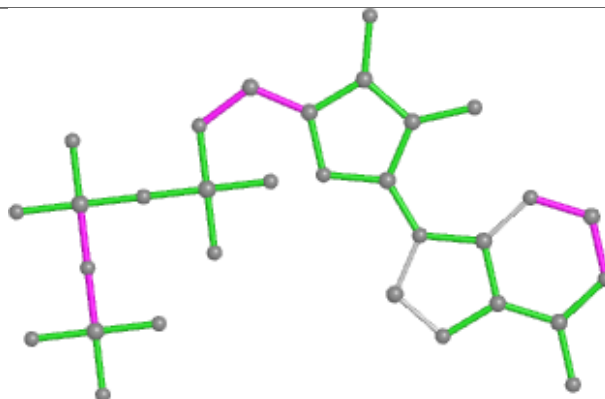
Ligand FBP B 401



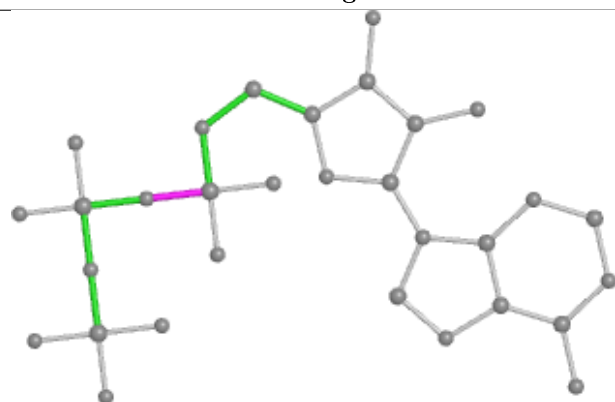
Ligand ATP D 401



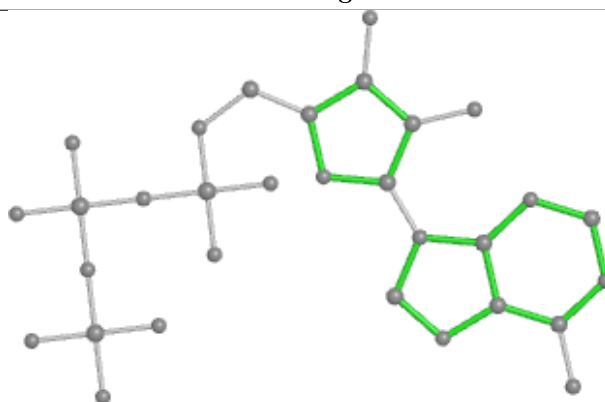
Bond lengths



Bond angles

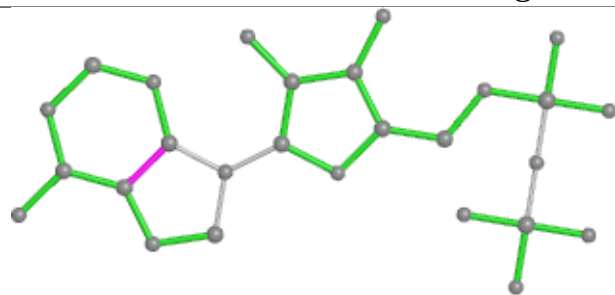


Torsions

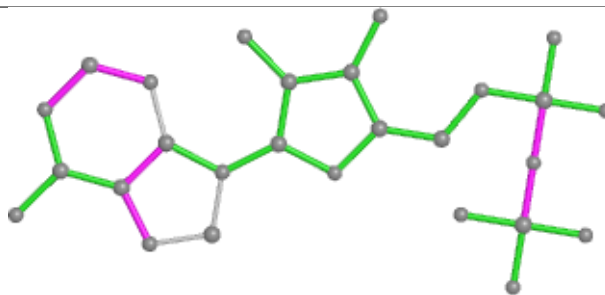


Rings

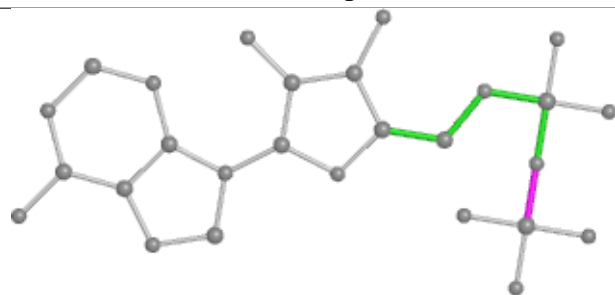
Ligand ADP B 402



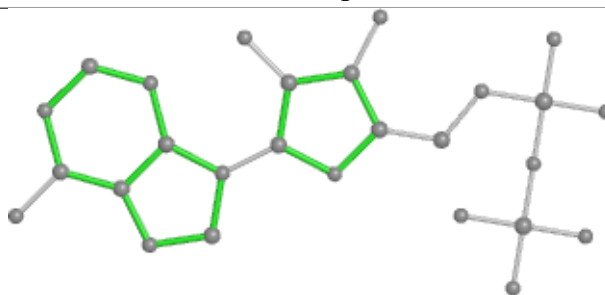
Bond lengths



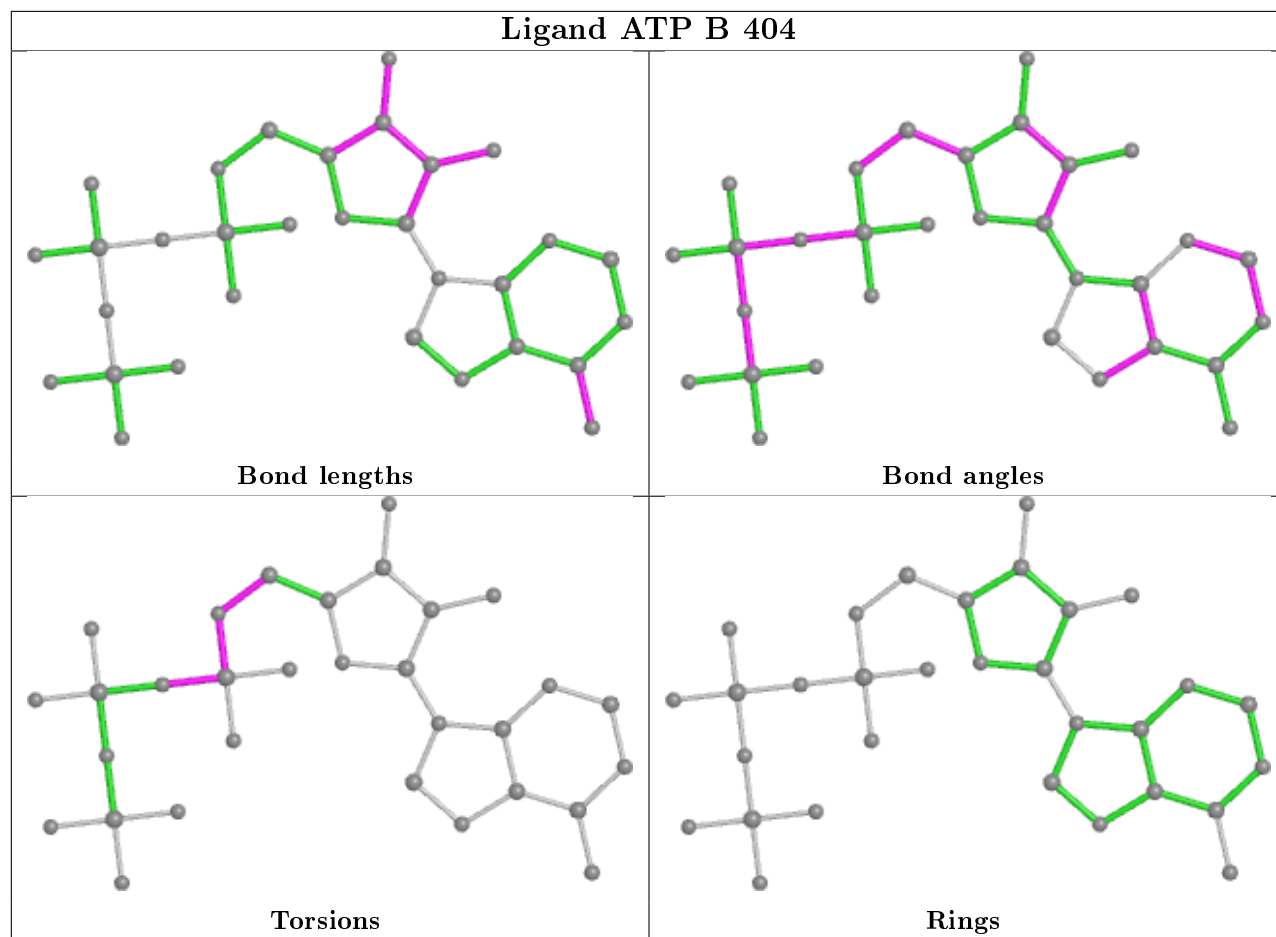
Bond angles

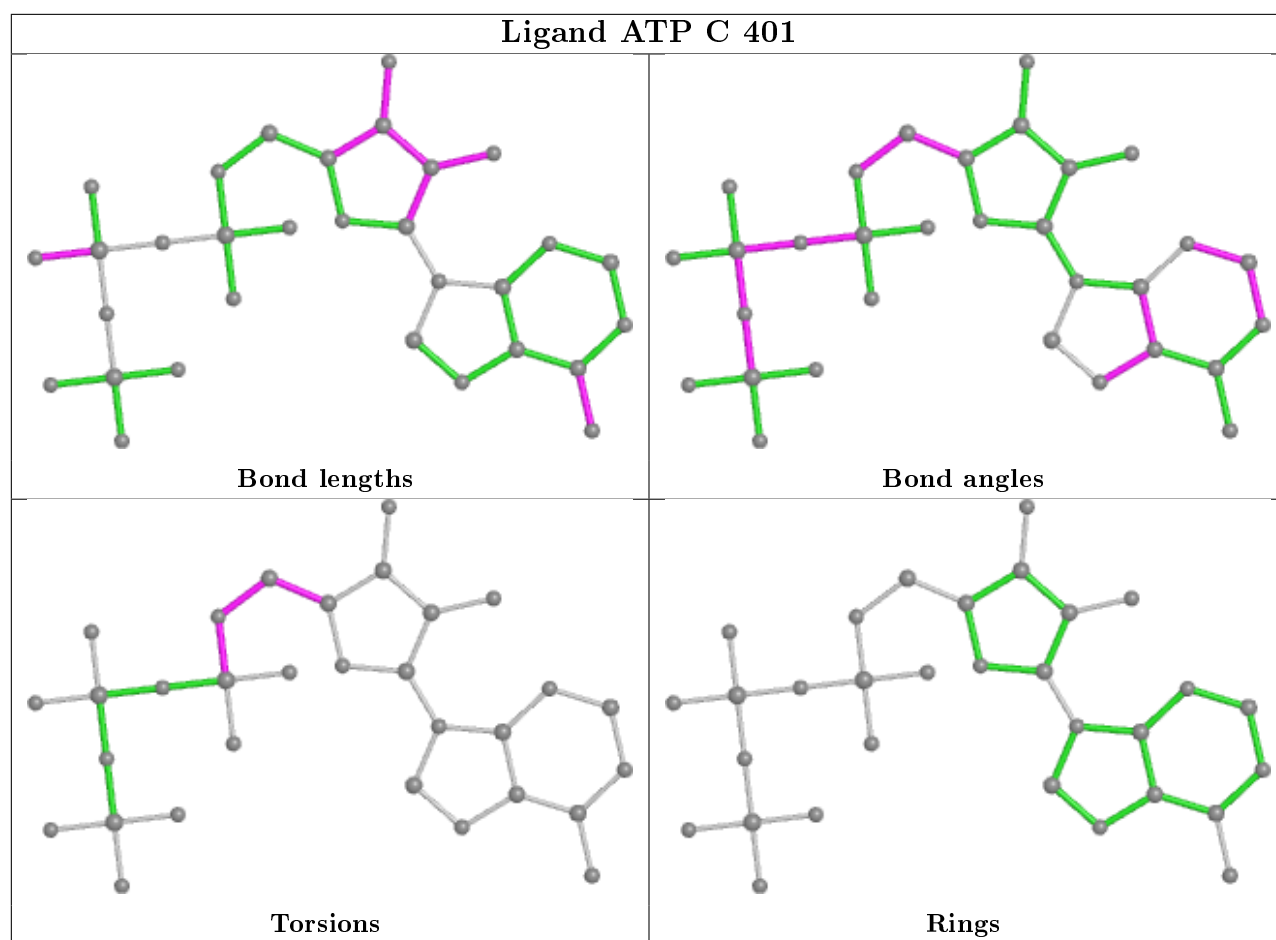


Torsions



Rings





5.7 Other polymers [i](#)

There are no such residues in this entry.

5.8 Polymer linkage issues [i](#)

There are no chain breaks in this entry.

6 Fit of model and data [i](#)

6.1 Protein, DNA and RNA chains [i](#)

In the following table, the column labelled ‘#RSRZ> 2’ contains the number (and percentage) of RSRZ outliers, followed by percent RSRZ outliers for the chain as percentile scores relative to all X-ray entries and entries of similar resolution. The OWAB column contains the minimum, median, 95th percentile and maximum values of the occupancy-weighted average B-factor per residue. The column labelled ‘Q< 0.9’ lists the number of (and percentage) of residues with an average occupancy less than 0.9.

Mol	Chain	Analysed	<RSRZ>	#RSRZ>2	OWAB(Å ²)	Q<0.9
1	A	309/309 (100%)	-0.39	0 100 100	16, 32, 55, 71	0
1	B	309/309 (100%)	-0.34	0 100 100	20, 34, 59, 76	0
1	C	307/309 (99%)	-0.20	2 (0%) 87 90	18, 40, 62, 90	0
1	D	309/309 (100%)	-0.28	0 100 100	21, 38, 59, 90	1 (0%)
All	All	1234/1236 (99%)	-0.30	2 (0%) 95 96	16, 36, 59, 90	1 (0%)

All (2) RSRZ outliers are listed below:

Mol	Chain	Res	Type	RSRZ
1	C	2	VAL	5.1
1	C	5	TYR	2.4

6.2 Non-standard residues in protein, DNA, RNA chains [i](#)

There are no non-standard protein/DNA/RNA residues in this entry.

6.3 Carbohydrates [i](#)

There are no monosaccharides in this entry.

6.4 Ligands [i](#)

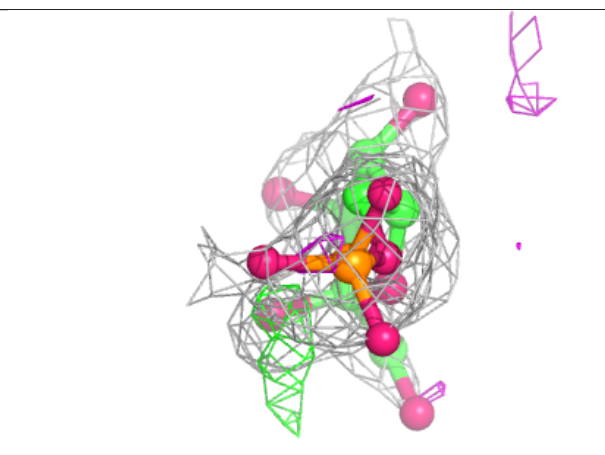
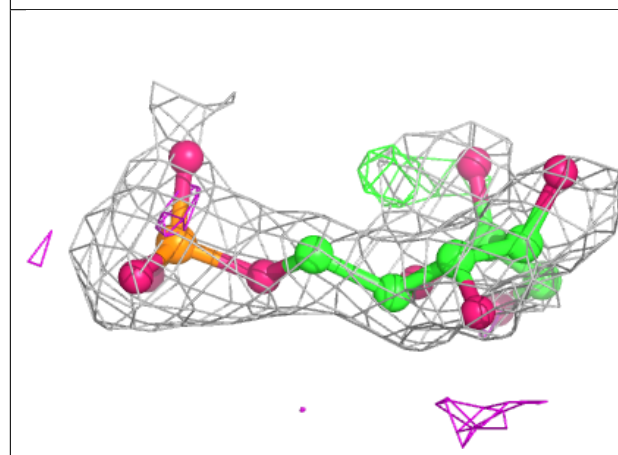
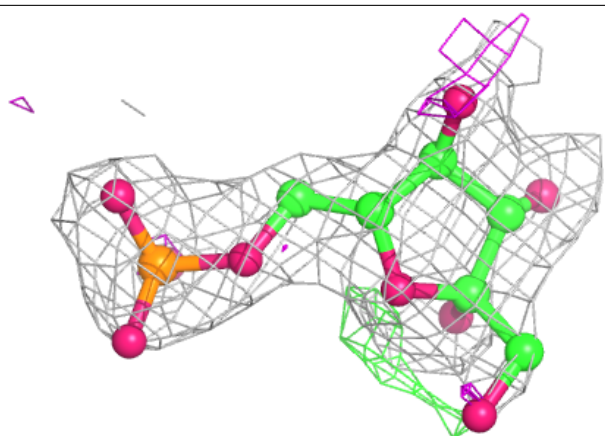
In the following table, the Atoms column lists the number of modelled atoms in the group and the number defined in the chemical component dictionary. The B-factors column lists the minimum, median, 95th percentile and maximum values of B factors of atoms in the group. The column labelled ‘Q< 0.9’ lists the number of atoms with occupancy less than 0.9.

Mol	Type	Chain	Res	Atoms	RSCC	RSR	B-factors(\AA^2)	Q<0.9
4	MG	A	403	1/1	0.43	0.27	39,39,39,39	0
4	MG	D	403	1/1	0.52	0.26	57,57,57,57	0
4	MG	B	403	1/1	0.60	0.32	50,50,50,50	0
4	MG	C	404	1/1	0.78	0.20	57,57,57,57	0
4	MG	A	404	1/1	0.79	0.10	69,69,69,69	0
3	F6P	D	402	16/16	0.83	0.22	31,37,45,46	16
4	MG	D	404	1/1	0.84	0.19	55,55,55,55	0
2	ATP	B	404	31/31	0.90	0.17	41,56,146,146	0
3	F6P	A	402	16/16	0.92	0.14	31,37,45,46	16
2	ATP	C	401	31/31	0.92	0.15	32,47,115,118	0
6	ADP	C	403	27/27	0.96	0.09	30,34,41,61	0
5	FBP	B	401	20/20	0.96	0.09	16,25,36,36	0
5	FBP	C	402	20/20	0.96	0.10	18,24,36,39	20
6	ADP	B	402	27/27	0.97	0.07	17,25,31,36	0
2	ATP	D	401	31/31	0.98	0.08	15,23,30,32	0
2	ATP	A	401	31/31	0.98	0.08	12,20,27,33	0

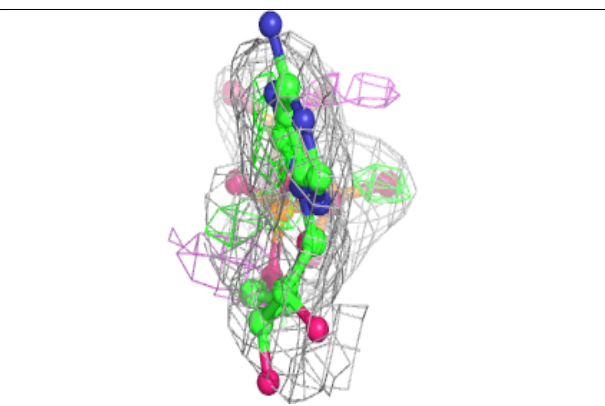
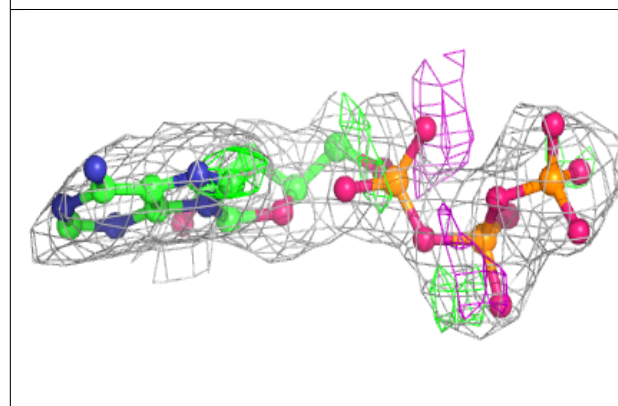
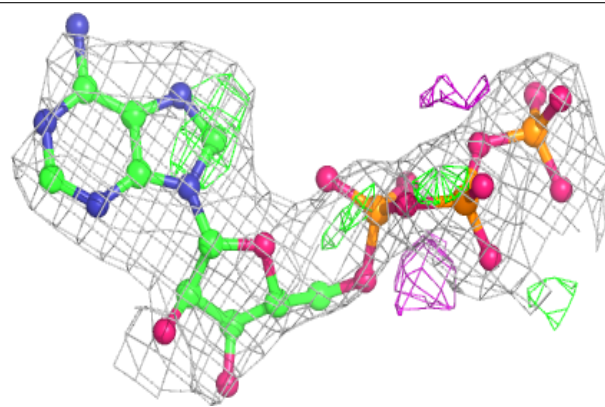
The following is a graphical depiction of the model fit to experimental electron density of all instances of the Ligand of Interest. In addition, ligands with molecular weight > 250 and outliers as shown on the geometry validation Tables will also be included. Each fit is shown from different orientation to approximate a three-dimensional view.

Electron density around F6P D 402:

$2mF_o-DF_c$ (at 0.7 rmsd) in gray
 mF_o-DF_c (at 3 rmsd) in purple (negative)
and green (positive)

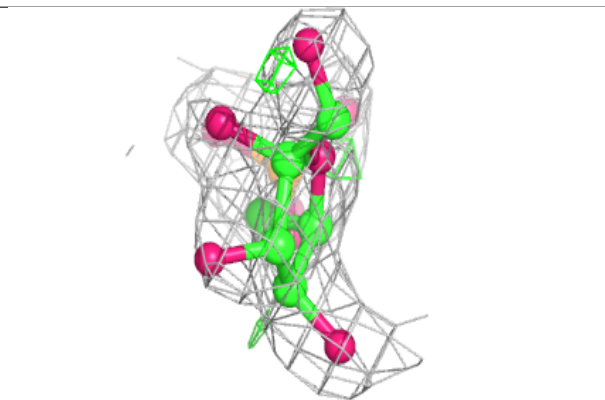
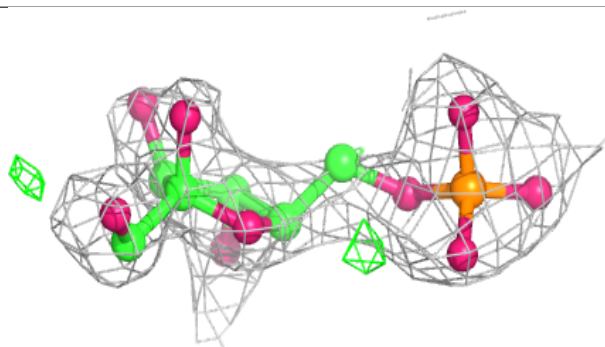
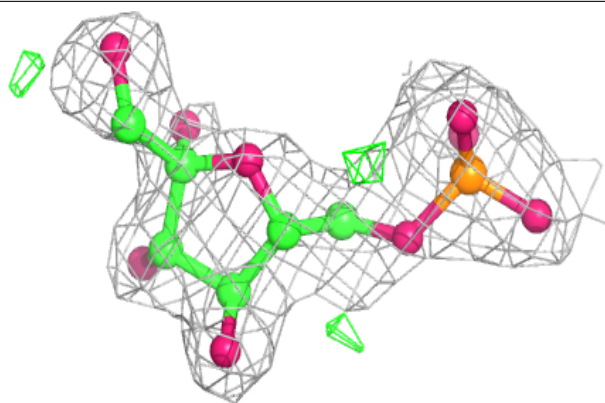
**Electron density around ATP B 404:**

$2mF_o-DF_c$ (at 0.7 rmsd) in gray
 mF_o-DF_c (at 3 rmsd) in purple (negative)
and green (positive)

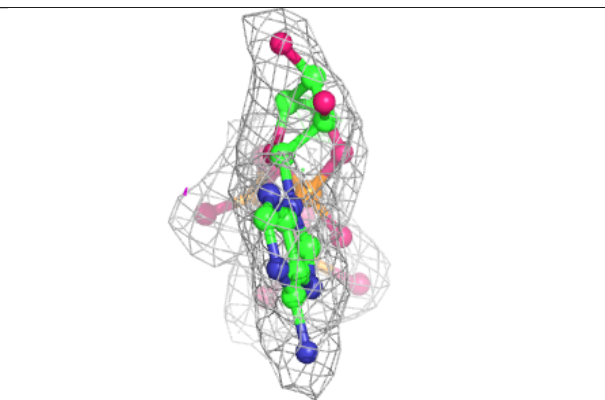
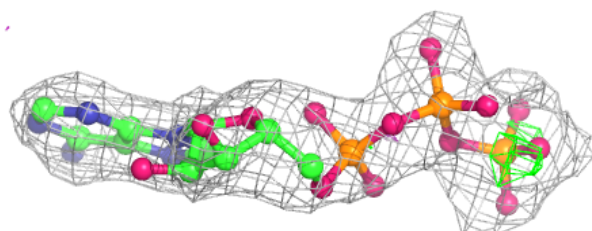
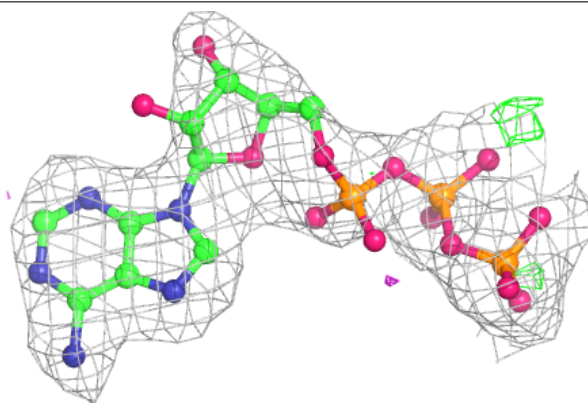


Electron density around F6P A 402:

$2mF_o-DF_c$ (at 0.7 rmsd) in gray
 mF_o-DF_c (at 3 rmsd) in purple (negative)
and green (positive)

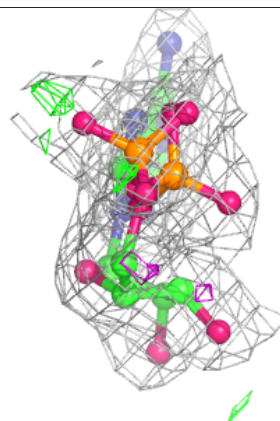
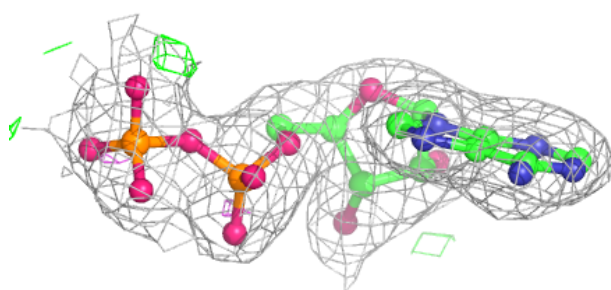
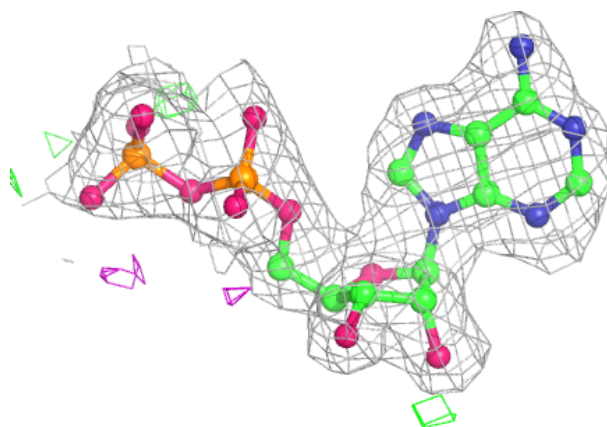
**Electron density around ATP C 401:**

$2mF_o-DF_c$ (at 0.7 rmsd) in gray
 mF_o-DF_c (at 3 rmsd) in purple (negative)
and green (positive)



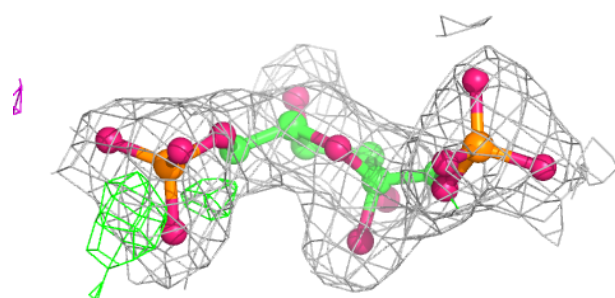
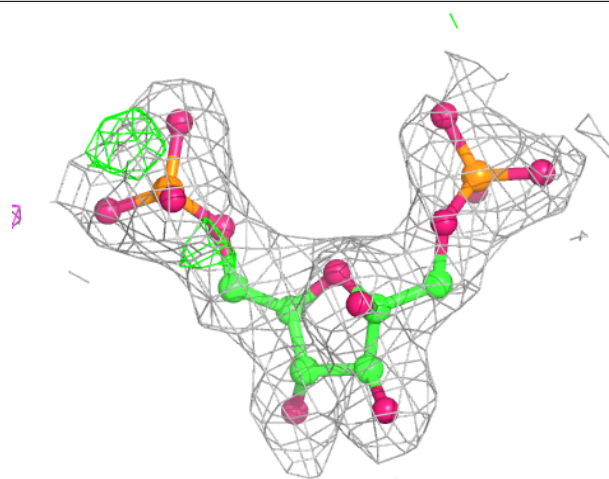
Electron density around ADP C 403:

$2mF_o-DF_c$ (at 0.7 rmsd) in gray
 mF_o-DF_c (at 3 rmsd) in purple (negative)
and green (positive)



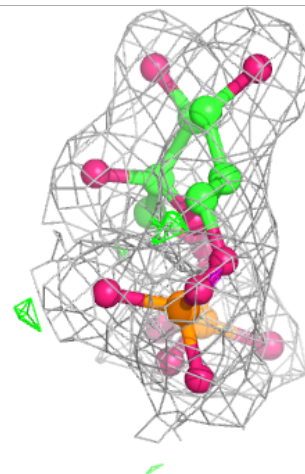
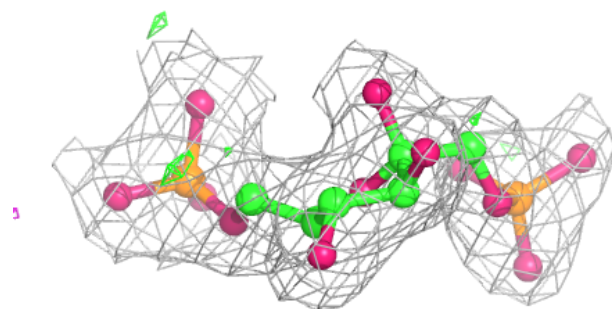
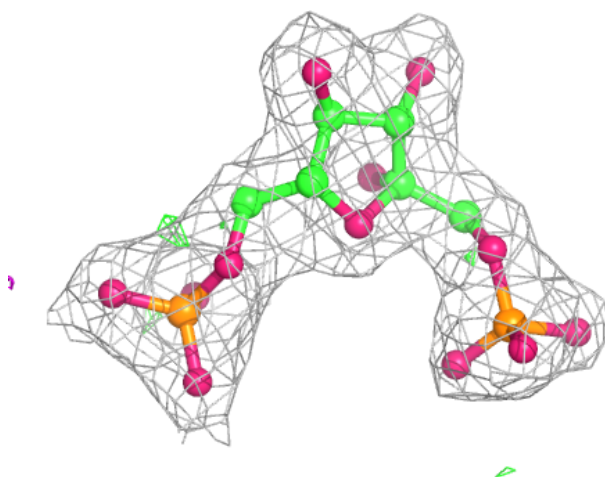
Electron density around FBP B 401:

$2mF_o-DF_c$ (at 0.7 rmsd) in gray
 mF_o-DF_c (at 3 rmsd) in purple (negative)
and green (positive)



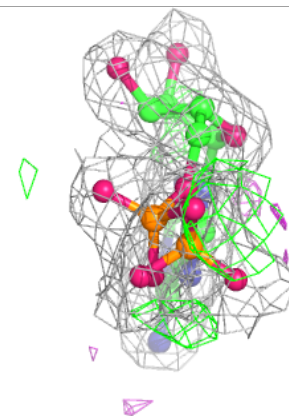
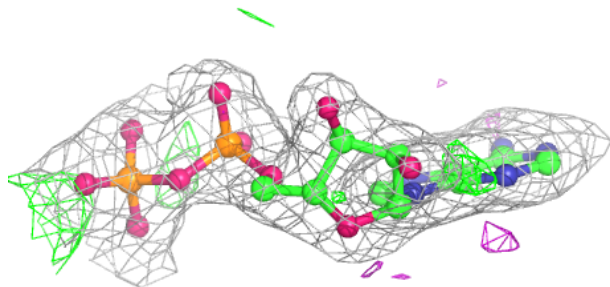
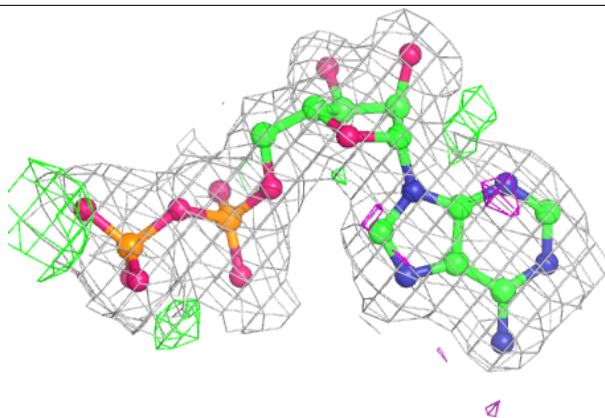
Electron density around FBP C 402:

$2mF_o-DF_c$ (at 0.7 rmsd) in gray
 mF_o-DF_c (at 3 rmsd) in purple (negative)
and green (positive)

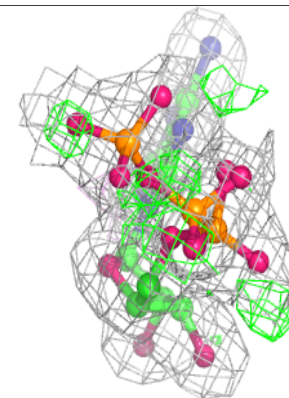
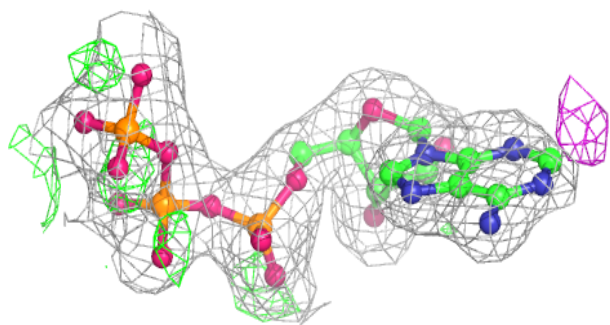
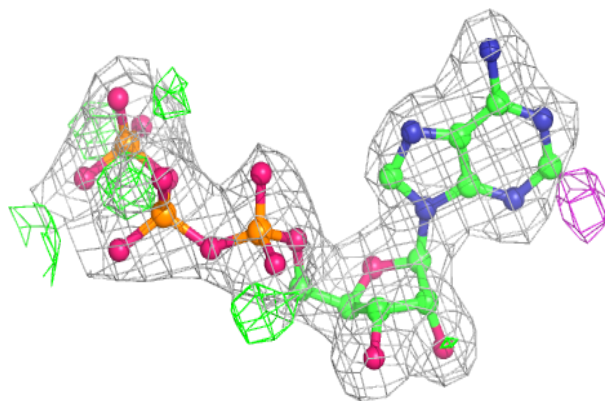


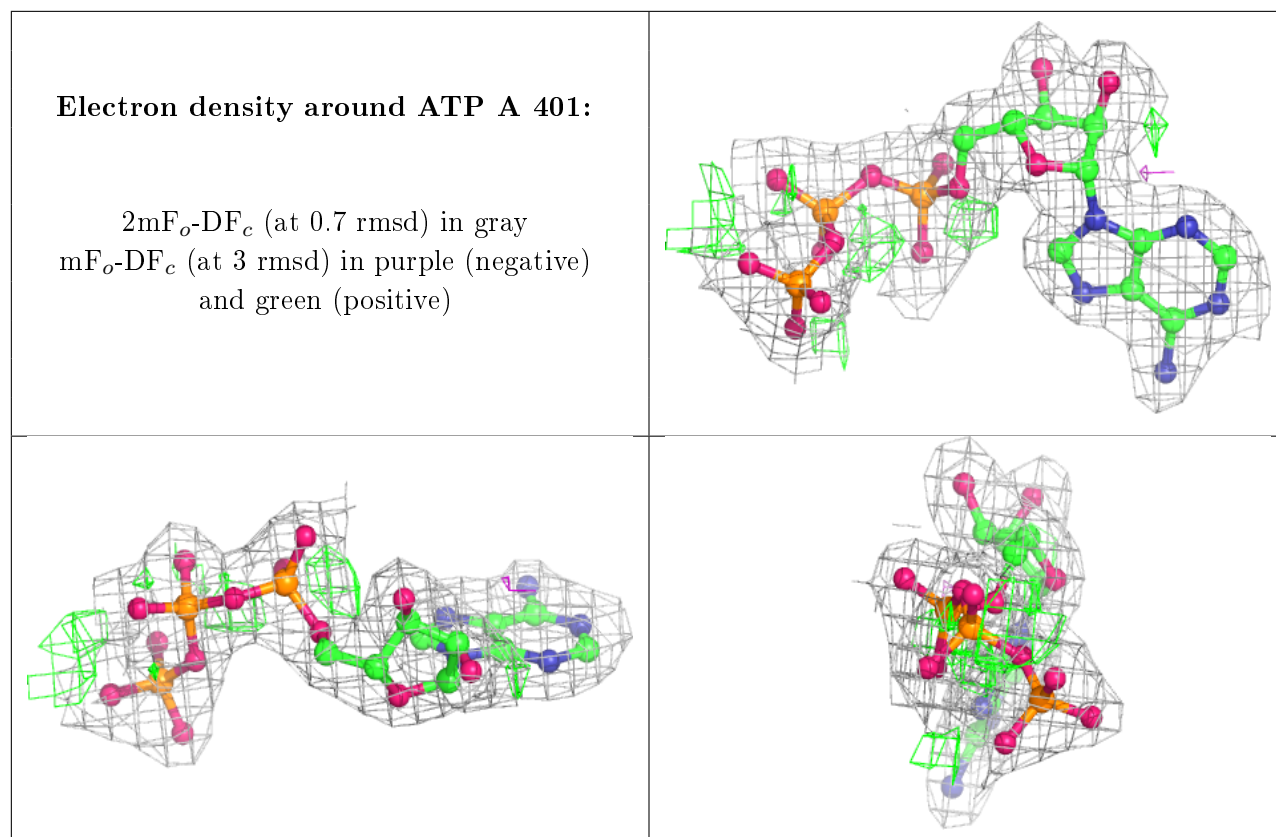
Electron density around ADP B 402:

$2mF_o-DF_c$ (at 0.7 rmsd) in gray
 mF_o-DF_c (at 3 rmsd) in purple (negative)
and green (positive)

**Electron density around ATP D 401:**

$2mF_o-DF_c$ (at 0.7 rmsd) in gray
 mF_o-DF_c (at 3 rmsd) in purple (negative)
and green (positive)





6.5 Other polymers [i](#)

There are no such residues in this entry.