



Full wwPDB X-ray Structure Validation Report ⓘ

Aug 9, 2020 – 01:01 AM BST

PDB ID : 6URH
Title : Crystal structure of broadly neutralizing antibody AR3X in complex with Hepatitis C virus envelope glycoprotein E2 ectodomain
Authors : Flyak, A.I.; Bjorkman, P.J.
Deposited on : 2019-10-23
Resolution : 2.20 Å(reported)

This is a Full wwPDB X-ray Structure Validation Report for a publicly released PDB entry.

We welcome your comments at validation@mail.wwpdb.org

A user guide is available at

<https://www.wwpdb.org/validation/2017/XrayValidationReportHelp>

with specific help available everywhere you see the ⓘ symbol.

The following versions of software and data (see [references ⓘ](#)) were used in the production of this report:

MolProbity : 4.02b-467
Mogul : 1.8.5 (274361), CSD as541be (2020)
Xtriage (Phenix) : 1.13
EDS : 2.13.1
Percentile statistics : 20191225.v01 (using entries in the PDB archive December 25th 2019)
Refmac : 5.8.0158
CCP4 : 7.0.044 (Gargrove)
Ideal geometry (proteins) : Engh & Huber (2001)
Ideal geometry (DNA, RNA) : Parkinson et al. (1996)
Validation Pipeline (wwPDB-VP) : 2.13.1

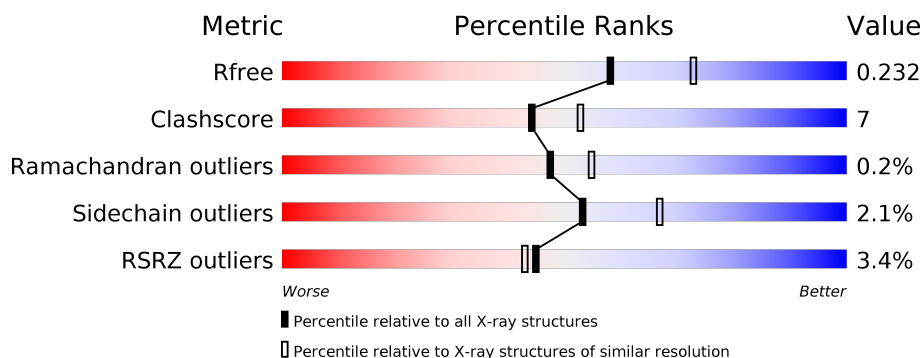
1 Overall quality at a glance

The following experimental techniques were used to determine the structure:

X-RAY DIFFRACTION

The reported resolution of this entry is 2.20 Å.

Percentile scores (ranging between 0-100) for global validation metrics of the entry are shown in the following graphic. The table shows the number of entries on which the scores are based.



Metric	Whole archive (#Entries)	Similar resolution (#Entries, resolution range(Å))
R_{free}	130704	4898 (2.20-2.20)
Clashscore	141614	5594 (2.20-2.20)
Ramachandran outliers	138981	5503 (2.20-2.20)
Sidechain outliers	138945	5504 (2.20-2.20)
RSRZ outliers	127900	4800 (2.20-2.20)

The table below summarises the geometric issues observed across the polymeric chains and their fit to the electron density. The red, orange, yellow and green segments on the lower bar indicate the fraction of residues that contain outliers for ≥ 3 , 2, 1 and 0 types of geometric quality criteria respectively. A grey segment represents the fraction of residues that are not modelled. The numeric value for each fraction is indicated below the corresponding segment, with a dot representing fractions $\leq 5\%$. The upper red bar (where present) indicates the fraction of residues that have poor fit to the electron density. The numeric value is given above the bar.

Mol	Chain	Length	Quality of chain
1	C	264	<div> <div>5%</div> <div> <div></div> <div>47%</div> <div>13%</div> <div>•</div> <div>39%</div> </div> </div>
2	H	254	<div> <div>2%</div> <div> <div></div> <div>86%</div> <div>9%</div> <div>5%</div> </div> </div>
3	L	214	<div> <div></div> <div> <div>86%</div> <div>14%</div> </div> </div>
4	A	2	<div> <div></div> <div> <div>50%</div> <div>50%</div> </div> </div>
5	B	4	<div> <div></div> <div> <div>50%</div> <div>50%</div> </div> </div>
6	D	4	<div> <div></div> <div> <div>50%</div> <div>50%</div> </div> </div>

Continued on next page...

Continued from previous page...

Mol	Chain	Length	Quality of chain
7	E	7	 <div>29% 71%</div>

The following table lists non-polymeric compounds, carbohydrate monomers and non-standard residues in protein, DNA, RNA chains that are outliers for geometric or electron-density-fit criteria:

Mol	Type	Chain	Res	Chirality	Geometry	Clashes	Electron density
5	MAN	B	4	-	-	-	X
6	MAN	D	4	-	-	-	X

2 Entry composition

There are 9 unique types of molecules in this entry. The entry contains 5124 atoms, of which 0 are hydrogens and 0 are deuteriums.

In the tables below, the ZeroOcc column contains the number of atoms modelled with zero occupancy, the AltConf column contains the number of residues with at least one atom in alternate conformation and the Trace column contains the number of residues modelled with at most 2 atoms.

- Molecule 1 is a protein called HCV envelope glycoprotein E2.

Mol	Chain	Residues	Atoms					ZeroOcc	AltConf	Trace
1	C	161	Total	C	N	O	S	0	0	0
			1255	801	219	221	14			

There are 2 discrepancies between the modelled and reference sequences:

Chain	Residue	Modelled	Actual	Comment	Reference
C	646	ILE	-	expression tag	UNP A0A2P0NE21
C	647	GLY	-	expression tag	UNP A0A2P0NE21

- Molecule 2 is a protein called AR3X Heavy Chain.

Mol	Chain	Residues	Atoms					ZeroOcc	AltConf	Trace
2	H	242	Total	C	N	O	S	0	0	0
			1819	1140	311	356	12			

- Molecule 3 is a protein called AR3X Light Chain.

Mol	Chain	Residues	Atoms					ZeroOcc	AltConf	Trace
3	L	213	Total	C	N	O	S	2	0	0
			1623	1012	277	330	4			

- Molecule 4 is an oligosaccharide called 2-acetamido-2-deoxy-beta-D-glucopyranose-(1-4)-2-acetamido-2-deoxy-beta-D-glucopyranose.



Mol	Chain	Residues	Atoms				ZeroOcc	AltConf	Trace
4	A	2	Total	C	N	O	0	0	0
			28	16	2	10			

- Molecule 5 is an oligosaccharide called alpha-D-mannopyranose-(1-6)-beta-D-mannopyranose-(1-3)-2-acetamido-2-deoxy-beta-D-glucopyranose-(1-4)-2-acetamido-2-deoxy-beta-D-glucopyranose.



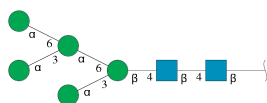
Mol	Chain	Residues	Atoms				ZeroOcc	AltConf	Trace
5	B	4	Total	C	N	O	0	0	0
			50	28	2	20			

- Molecule 6 is an oligosaccharide called alpha-D-mannopyranose-(1-6)-beta-D-mannopyranose-(1-4)-2-acetamido-2-deoxy-beta-D-glucopyranose-(1-4)-2-acetamido-2-deoxy-beta-D-glucopyranose.



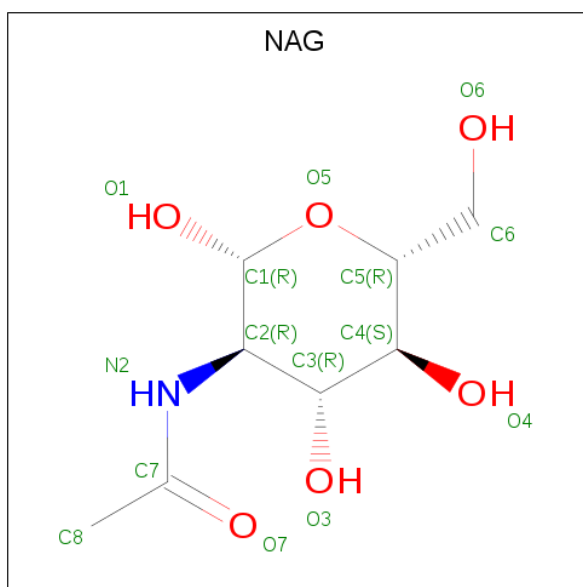
Mol	Chain	Residues	Atoms				ZeroOcc	AltConf	Trace
6	D	4	Total	C	N	O	0	0	0
			50	28	2	20			

- Molecule 7 is an oligosaccharide called alpha-D-mannopyranose-(1-3)-[alpha-D-mannopyranose-(1-6)]alpha-D-mannopyranose-(1-6)-[alpha-D-mannopyranose-(1-3)]beta-D-mannopyranose-(1-4)-2-acetamido-2-deoxy-beta-D-glucopyranose-(1-4)-2-acetamido-2-deoxy-beta-D-glucopyranose.



Mol	Chain	Residues	Atoms				ZeroOcc	AltConf	Trace
7	E	7	Total	C	N	O	0	0	0
			83	46	2	35			

- Molecule 8 is 2-acetamido-2-deoxy-beta-D-glucopyranose (three-letter code: NAG) (formula: C₈H₁₅NO₆).



Mol	Chain	Residues	Atoms				ZeroOcc	AltConf
8	C	1	Total	C	N	O	0	0
			14	8	1	5		

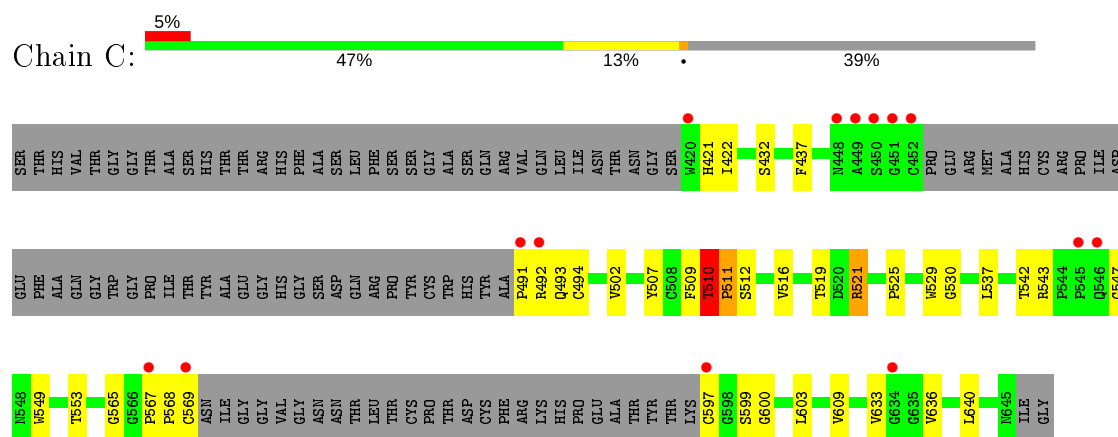
- Molecule 9 is water.

Mol	Chain	Residues	Atoms		ZeroOcc	AltConf
9	C	40	Total	O	0	0
			40	40		
9	H	91	Total	O	0	0
			91	91		
9	L	71	Total	O	0	0
			71	71		

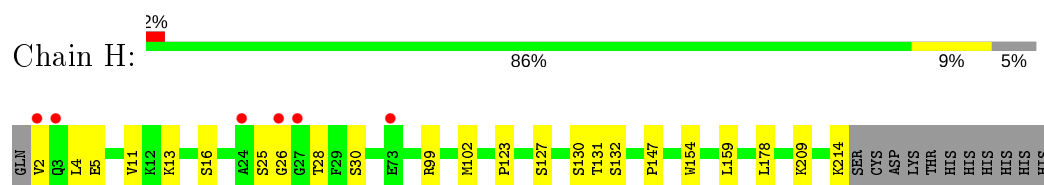
3 Residue-property plots [i](#)

These plots are drawn for all protein, RNA, DNA and oligosaccharide chains in the entry. The first graphic for a chain summarises the proportions of the various outlier classes displayed in the second graphic. The second graphic shows the sequence view annotated by issues in geometry and electron density. Residues are color-coded according to the number of geometric quality criteria for which they contain at least one outlier: green = 0, yellow = 1, orange = 2 and red = 3 or more. A red dot above a residue indicates a poor fit to the electron density ($RSRZ > 2$). Stretches of 2 or more consecutive residues without any outlier are shown as a green connector. Residues present in the sample, but not in the model, are shown in grey.

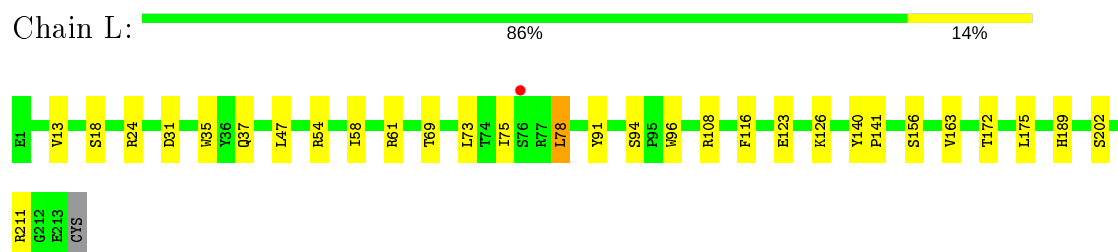
- Molecule 1: HCV envelope glycoprotein E2



- Molecule 2: AR3X Heavy Chain



- Molecule 3: AR3X Light Chain



- Molecule 4: 2-acetamido-2-deoxy-beta-D-glucopyranose-(1-4)-2-acetamido-2-deoxy-beta-D-glucopyranose





- Molecule 5: alpha-D-mannopyranose-(1-6)-beta-D-mannopyranose-(1-3)-2-acetamido-2-deoxy-beta-D-glucopyranose-(1-4)-2-acetamido-2-deoxy-beta-D-glucopyranose



- Molecule 6: alpha-D-mannopyranose-(1-6)-beta-D-mannopyranose-(1-4)-2-acetamido-2-deoxy-beta-D-glucopyranose-(1-4)-2-acetamido-2-deoxy-beta-D-glucopyranose



- Molecule 7: alpha-D-mannopyranose-(1-3)-[alpha-D-mannopyranose-(1-6)]alpha-D-mannopyranose-(1-6)-[alpha-D-mannopyranose-(1-3)]beta-D-mannopyranose-(1-4)-2-acetamido-2-deoxy-beta-D-glucopyranose-(1-4)-2-acetamido-2-deoxy-beta-D-glucopyranose



4 Data and refinement statistics

Property	Value	Source
Space group	P 21 21 21	Depositor
Cell constants a, b, c, α , β , γ	64.73 Å 69.23 Å 176.70 Å 90.00° 90.00° 90.00°	Depositor
Resolution (Å)	54.49 – 2.20 54.49 – 2.20	Depositor EDS
% Data completeness (in resolution range)	99.2 (54.49-2.20) 99.2 (54.49-2.20)	Depositor EDS
R_{merge}	0.11	Depositor
R_{sym}	(Not available)	Depositor
$\langle I/\sigma(I) \rangle$ ¹	1.52 (at 2.20 Å)	Xtriage
Refinement program	PHENIX 1.13 _2998	Depositor
R, R_{free}	0.186 , 0.233 0.187 , 0.232	Depositor DCC
R_{free} test set	1965 reflections (4.81%)	wwPDB-VP
Wilson B-factor (Å ²)	44.4	Xtriage
Anisotropy	0.172	Xtriage
Bulk solvent k_{sol} (e/Å ³), B_{sol} (Å ²)	0.32 , 42.0	EDS
L-test for twinning ²	$\langle L \rangle = 0.49$, $\langle L^2 \rangle = 0.32$	Xtriage
Estimated twinning fraction	No twinning to report.	Xtriage
F_o, F_c correlation	0.96	EDS
Total number of atoms	5124	wwPDB-VP
Average B, all atoms (Å ²)	58.0	wwPDB-VP

Xtriage's analysis on translational NCS is as follows: *The largest off-origin peak in the Patterson function is 3.79% of the height of the origin peak. No significant pseudotranslation is detected.*

¹Intensities estimated from amplitudes.

²Theoretical values of $\langle |L| \rangle$, $\langle L^2 \rangle$ for acentric reflections are 0.5, 0.333 respectively for untwinned datasets, and 0.375, 0.2 for perfectly twinned datasets.

5 Model quality [i](#)

5.1 Standard geometry [i](#)

Bond lengths and bond angles in the following residue types are not validated in this section: BMA, NAG, MAN

The Z score for a bond length (or angle) is the number of standard deviations the observed value is removed from the expected value. A bond length (or angle) with $|Z| > 5$ is considered an outlier worth inspection. RMSZ is the root-mean-square of all Z scores of the bond lengths (or angles).

Mol	Chain	Bond lengths		Bond angles	
		RMSZ	$\# Z > 5$	RMSZ	$\# Z > 5$
1	C	0.39	0/1299	0.61	1/1778 (0.1%)
2	H	0.42	0/1862	0.60	1/2528 (0.0%)
3	L	0.38	0/1659	0.56	0/2256
All	All	0.40	0/4820	0.59	2/6562 (0.0%)

Chiral center outliers are detected by calculating the chiral volume of a chiral center and verifying if the center is modelled as a planar moiety or with the opposite hand. A planarity outlier is detected by checking planarity of atoms in a peptide group, atoms in a mainchain group or atoms of a sidechain that are expected to be planar.

Mol	Chain	#Chirality outliers	#Planarity outliers
1	C	0	1

There are no bond length outliers.

All (2) bond angle outliers are listed below:

Mol	Chain	Res	Type	Atoms	Z	Observed(°)	Ideal(°)
1	C	510	THR	C-N-CD	-5.52	108.45	120.60
2	H	178	LEU	CA-CB-CG	5.34	127.59	115.30

There are no chirality outliers.

All (1) planarity outliers are listed below:

Mol	Chain	Res	Type	Group
1	C	510	THR	Peptide

5.2 Too-close contacts ⓘ

In the following table, the Non-H and H(model) columns list the number of non-hydrogen atoms and hydrogen atoms in the chain respectively. The H(added) column lists the number of hydrogen atoms added and optimized by MolProbity. The Clashes column lists the number of clashes within the asymmetric unit, whereas Symm-Clashes lists symmetry related clashes.

Mol	Chain	Non-H	H(model)	H(added)	Clashes	Symm-Clashes
1	C	1255	0	1166	27	0
2	H	1819	0	1771	14	0
3	L	1623	0	1573	17	0
4	A	28	0	25	0	0
5	B	50	0	43	1	0
6	D	50	0	43	0	0
7	E	83	0	70	0	0
8	C	14	0	13	0	0
9	C	40	0	0	2	0
9	H	91	0	0	1	0
9	L	71	0	0	1	0
All	All	5124	0	4704	57	0

The all-atom clashscore is defined as the number of clashes found per 1000 atoms (including hydrogen atoms). The all-atom clashscore for this structure is 7.

All (57) close contacts within the same asymmetric unit are listed below, sorted by their clash magnitude.

Atom-1	Atom-2	Interatomic distance (Å)	Clash overlap (Å)
2:H:28:THR:HG22	2:H:30:SER:H	1.37	0.89
3:L:13:VAL:HG21	3:L:78:LEU:HD13	1.58	0.85
1:C:507:TYR:OH	9:C:4401:HOH:O	2.04	0.76
2:H:5:GLU:OE2	2:H:25:SER:HB3	1.87	0.74
2:H:123:PRO:HD3	2:H:209:LYS:HE3	1.72	0.72
3:L:189:HIS:O	3:L:211:ARG:NH1	2.23	0.71
1:C:530:GLY:O	9:C:4402:HOH:O	2.10	0.70
1:C:511:PRO:HD3	1:C:549:TRP:CG	2.27	0.69
3:L:37:GLN:HB2	3:L:47:LEU:HD11	1.74	0.68
3:L:211:ARG:HB3	3:L:211:ARG:HH11	1.59	0.67
2:H:127:SER:OG	9:H:301:HOH:O	2.15	0.64
1:C:543:ARG:NH1	1:C:547:GLY:O	2.26	0.63
3:L:54:ARG:NH1	3:L:58:ILE:O	2.33	0.61
3:L:211:ARG:NH1	3:L:211:ARG:HB3	2.17	0.60
1:C:569:CYS:HB3	1:C:597:CYS:N	2.18	0.59
1:C:510:THR:O	1:C:510:THR:OG1	2.23	0.56

Continued on next page...

Continued from previous page...

Atom-1	Atom-2	Interatomic distance (Å)	Clash overlap (Å)
1:C:609:VAL:HG13	1:C:640:LEU:HD13	1.88	0.56
1:C:549:TRP:CH2	1:C:567:PRO:HB3	2.41	0.56
2:H:11:VAL:HG11	2:H:147:PRO:HG3	1.88	0.55
1:C:565:GLY:HA2	1:C:600:GLY:H	1.70	0.55
3:L:163:VAL:HG22	3:L:175:LEU:HD12	1.90	0.53
3:L:13:VAL:CG2	3:L:78:LEU:HD13	2.34	0.52
2:H:4:LEU:HD13	2:H:102:MET:HG2	1.93	0.51
2:H:130:SER:HA	3:L:116:PHE:HD1	1.76	0.51
1:C:421:HIS:CE1	1:C:422:ILE:HG22	2.45	0.50
1:C:511:PRO:HD3	1:C:549:TRP:CD1	2.47	0.49
1:C:633:VAL:O	1:C:636:VAL:HG22	2.13	0.49
3:L:172:THR:HG23	9:L:357:HOH:O	2.12	0.48
1:C:422:ILE:HG13	1:C:529:TRP:CH2	2.47	0.48
2:H:28:THR:HG22	2:H:30:SER:N	2.18	0.47
3:L:91:TYR:HA	3:L:96:TRP:CE3	2.49	0.47
1:C:519:THR:HG22	1:C:525:PRO:HA	1.96	0.47
3:L:47:LEU:HA	3:L:58:ILE:HG13	1.97	0.47
2:H:2:VAL:HB	2:H:26:GLY:HA3	1.96	0.46
1:C:432:SER:HA	2:H:99:ARG:CZ	2.46	0.46
1:C:569:CYS:O	1:C:597:CYS:N	2.49	0.46
1:C:509:PHE:HE1	1:C:553:THR:HG22	1.81	0.46
2:H:13:LYS:O	2:H:16:SER:HB3	2.16	0.46
3:L:35:TRP:CE2	3:L:73:LEU:HB2	2.51	0.46
1:C:549:TRP:CE3	1:C:568:PRO:HD2	2.53	0.44
1:C:422:ILE:HG13	1:C:529:TRP:HH2	1.83	0.44
3:L:123:GLU:O	3:L:126:LYS:HG2	2.18	0.44
1:C:491:PRO:HB2	1:C:492:ARG:H	1.71	0.44
1:C:493:GLN:HG3	1:C:494:CYS:H	1.83	0.43
1:C:516:VAL:HG22	1:C:542:THR:HG21	2.01	0.43
2:H:154:TRP:HB3	2:H:159:LEU:HD21	2.00	0.42
1:C:502:VAL:HG21	1:C:537:LEU:HD13	2.00	0.42
2:H:127:SER:O	2:H:131:THR:HG23	2.20	0.41
5:B:3:BMA:H62	5:B:4:MAN:H2	1.36	0.41
1:C:511:PRO:HD3	1:C:549:TRP:HB3	2.03	0.41
1:C:521:ARG:HG2	1:C:521:ARG:H	1.64	0.41
2:H:127:SER:HB3	2:H:214:LYS:HD3	2.01	0.41
1:C:510:THR:C	1:C:512:SER:N	2.75	0.40
3:L:140:TYR:CD2	3:L:141:PRO:HA	2.56	0.40
3:L:18:SER:HA	3:L:75:ILE:O	2.21	0.40
1:C:549:TRP:CZ2	1:C:603:LEU:HD23	2.56	0.40
3:L:24:ARG:HA	3:L:69:THR:O	2.22	0.40

There are no symmetry-related clashes.

5.3 Torsion angles [i](#)

5.3.1 Protein backbone [i](#)

In the following table, the Percentiles column shows the percent Ramachandran outliers of the chain as a percentile score with respect to all X-ray entries followed by that with respect to entries of similar resolution.

The Analysed column shows the number of residues for which the backbone conformation was analysed, and the total number of residues.

Mol	Chain	Analysed	Favoured	Allowed	Outliers	Percentiles	
1	C	155/264 (59%)	150 (97%)	4 (3%)	1 (1%)	25	26
2	H	240/254 (94%)	233 (97%)	7 (3%)	0	100	100
3	L	211/214 (99%)	203 (96%)	8 (4%)	0	100	100
All	All	606/732 (83%)	586 (97%)	19 (3%)	1 (0%)	47	55

All (1) Ramachandran outliers are listed below:

Mol	Chain	Res	Type
1	C	511	PRO

5.3.2 Protein sidechains [i](#)

In the following table, the Percentiles column shows the percent sidechain outliers of the chain as a percentile score with respect to all X-ray entries followed by that with respect to entries of similar resolution.

The Analysed column shows the number of residues for which the sidechain conformation was analysed, and the total number of residues.

Mol	Chain	Analysed	Rotameric	Outliers	Percentiles	
1	C	137/220 (62%)	134 (98%)	3 (2%)	52	65
2	H	203/215 (94%)	202 (100%)	1 (0%)	88	94
3	L	182/183 (100%)	175 (96%)	7 (4%)	33	42
All	All	522/618 (84%)	511 (98%)	11 (2%)	53	67

All (11) residues with a non-rotameric sidechain are listed below:

Mol	Chain	Res	Type
1	C	437	PHE
1	C	521	ARG
1	C	599	SER
2	H	132	SER
3	L	31	ASP
3	L	61	ARG
3	L	78	LEU
3	L	94	SER
3	L	108	ARG
3	L	156	SER
3	L	202	SER

Some sidechains can be flipped to improve hydrogen bonding and reduce clashes. There are no such sidechains identified.

5.3.3 RNA ⓘ

There are no RNA molecules in this entry.

5.4 Non-standard residues in protein, DNA, RNA chains ⓘ

There are no non-standard protein/DNA/RNA residues in this entry.

5.5 Carbohydrates ⓘ

17 monosaccharides are modelled in this entry.

In the following table, the Counts columns list the number of bonds (or angles) for which Mogul statistics could be retrieved, the number of bonds (or angles) that are observed in the model and the number of bonds (or angles) that are defined in the Chemical Component Dictionary. The Link column lists molecule types, if any, to which the group is linked. The Z score for a bond length (or angle) is the number of standard deviations the observed value is removed from the expected value. A bond length (or angle) with $|Z| > 2$ is considered an outlier worth inspection. RMSZ is the root-mean-square of all Z scores of the bond lengths (or angles).

Mol	Type	Chain	Res	Link	Bond lengths			Bond angles		
					Counts	RMSZ	$\# Z > 2$	Counts	RMSZ	$\# Z > 2$
4	NAG	A	1	1,4	14,14,15	0.33	0	17,19,21	1.05	1 (5%)
4	NAG	A	2	4	14,14,15	0.39	0	17,19,21	0.76	0
5	NAG	B	1	1,5	14,14,15	0.28	0	17,19,21	0.96	1 (5%)
5	NAG	B	2	5	14,14,15	0.30	0	17,19,21	2.11	3 (17%)

Mol	Type	Chain	Res	Link	Bond lengths			Bond angles		
					Counts	RMSZ	# Z > 2	Counts	RMSZ	# Z > 2
5	BMA	B	3	5	11,11,12	0.41	0	15,15,17	2.18	4 (26%)
5	MAN	B	4	5	11,11,12	1.62	2 (18%)	15,15,17	1.42	2 (13%)
6	NAG	D	1	1,6	14,14,15	0.27	0	17,19,21	0.71	0
6	NAG	D	2	6	14,14,15	0.40	0	17,19,21	0.63	0
6	BMA	D	3	6	11,11,12	0.32	0	15,15,17	0.80	1 (6%)
6	MAN	D	4	6	11,11,12	1.11	1 (9%)	15,15,17	1.06	1 (6%)
7	NAG	E	1	1,7	14,14,15	0.35	0	17,19,21	0.93	1 (5%)
7	NAG	E	2	7	14,14,15	0.43	0	17,19,21	0.88	0
7	BMA	E	3	7	11,11,12	0.35	0	15,15,17	0.84	0
7	MAN	E	4	7	11,11,12	0.89	0	15,15,17	1.38	1 (6%)
7	MAN	E	5	7	11,11,12	1.12	1 (9%)	15,15,17	0.97	0
7	MAN	E	6	7	11,11,12	0.88	0	15,15,17	1.05	1 (6%)
7	MAN	E	7	7	11,11,12	0.82	0	15,15,17	1.05	2 (13%)

In the following table, the Chirals column lists the number of chiral outliers, the number of chiral centers analysed, the number of these observed in the model and the number defined in the Chemical Component Dictionary. Similar counts are reported in the Torsion and Rings columns. '-' means no outliers of that kind were identified.

Mol	Type	Chain	Res	Link	Chirals	Torsions	Rings
4	NAG	A	1	1,4	-	4/6/23/26	0/1/1/1
4	NAG	A	2	4	-	4/6/23/26	0/1/1/1
5	NAG	B	1	1,5	-	2/6/23/26	0/1/1/1
5	NAG	B	2	5	-	0/6/23/26	0/1/1/1
5	BMA	B	3	5	-	2/2/19/22	0/1/1/1
5	MAN	B	4	5	-	1/2/19/22	0/1/1/1
6	NAG	D	1	1,6	-	0/6/23/26	0/1/1/1
6	NAG	D	2	6	-	2/6/23/26	0/1/1/1
6	BMA	D	3	6	-	1/2/19/22	0/1/1/1
6	MAN	D	4	6	-	0/2/19/22	0/1/1/1
7	NAG	E	1	1,7	-	2/6/23/26	0/1/1/1
7	NAG	E	2	7	-	0/6/23/26	0/1/1/1
7	BMA	E	3	7	-	0/2/19/22	0/1/1/1
7	MAN	E	4	7	-	0/2/19/22	0/1/1/1
7	MAN	E	5	7	-	2/2/19/22	0/1/1/1
7	MAN	E	6	7	-	0/2/19/22	0/1/1/1
7	MAN	E	7	7	-	0/2/19/22	0/1/1/1

All (4) bond length outliers are listed below:

Mol	Chain	Res	Type	Atoms	Z	Observed(Å)	Ideal(Å)
5	B	4	MAN	C1-C2	3.97	1.61	1.52
5	B	4	MAN	C2-C3	2.93	1.56	1.52
6	D	4	MAN	C2-C3	2.27	1.55	1.52
7	E	5	MAN	C2-C3	2.07	1.55	1.52

All (18) bond angle outliers are listed below:

Mol	Chain	Res	Type	Atoms	Z	Observed(°)	Ideal(°)
5	B	2	NAG	O3-C3-C2	-7.54	93.87	109.47
5	B	3	BMA	C1-O5-C5	-6.99	102.73	112.19
7	E	4	MAN	C1-O5-C5	3.97	117.57	112.19
5	B	4	MAN	C1-C2-C3	3.31	113.74	109.67
5	B	3	BMA	C1-C2-C3	-2.92	106.08	109.67
7	E	1	NAG	C1-O5-C5	2.84	116.05	112.19
5	B	4	MAN	C1-O5-C5	2.82	116.01	112.19
7	E	6	MAN	C1-O5-C5	2.77	115.94	112.19
5	B	2	NAG	C3-C4-C5	2.51	114.71	110.24
5	B	2	NAG	C6-C5-C4	-2.40	107.39	113.00
7	E	7	MAN	O2-C2-C3	-2.38	105.36	110.14
7	E	7	MAN	C1-O5-C5	2.35	115.38	112.19
5	B	3	BMA	O4-C4-C3	-2.29	105.05	110.35
5	B	1	NAG	C1-O5-C5	2.21	115.18	112.19
6	D	3	BMA	O5-C1-C2	-2.12	107.49	110.77
6	D	4	MAN	C1-O5-C5	2.10	115.04	112.19
5	B	3	BMA	O5-C5-C6	2.09	110.49	107.20
4	A	1	NAG	C2-N2-C7	2.01	125.76	122.90

There are no chirality outliers.

All (20) torsion outliers are listed below:

Mol	Chain	Res	Type	Atoms
4	A	2	NAG	C8-C7-N2-C2
4	A	2	NAG	O7-C7-N2-C2
5	B	3	BMA	O5-C5-C6-O6
5	B	3	BMA	C4-C5-C6-O6
6	D	2	NAG	O5-C5-C6-O6
5	B	1	NAG	C8-C7-N2-C2
5	B	1	NAG	O7-C7-N2-C2
5	B	4	MAN	O5-C5-C6-O6
6	D	3	BMA	O5-C5-C6-O6
4	A	1	NAG	C4-C5-C6-O6
4	A	2	NAG	C4-C5-C6-O6

Continued on next page...

Continued from previous page...

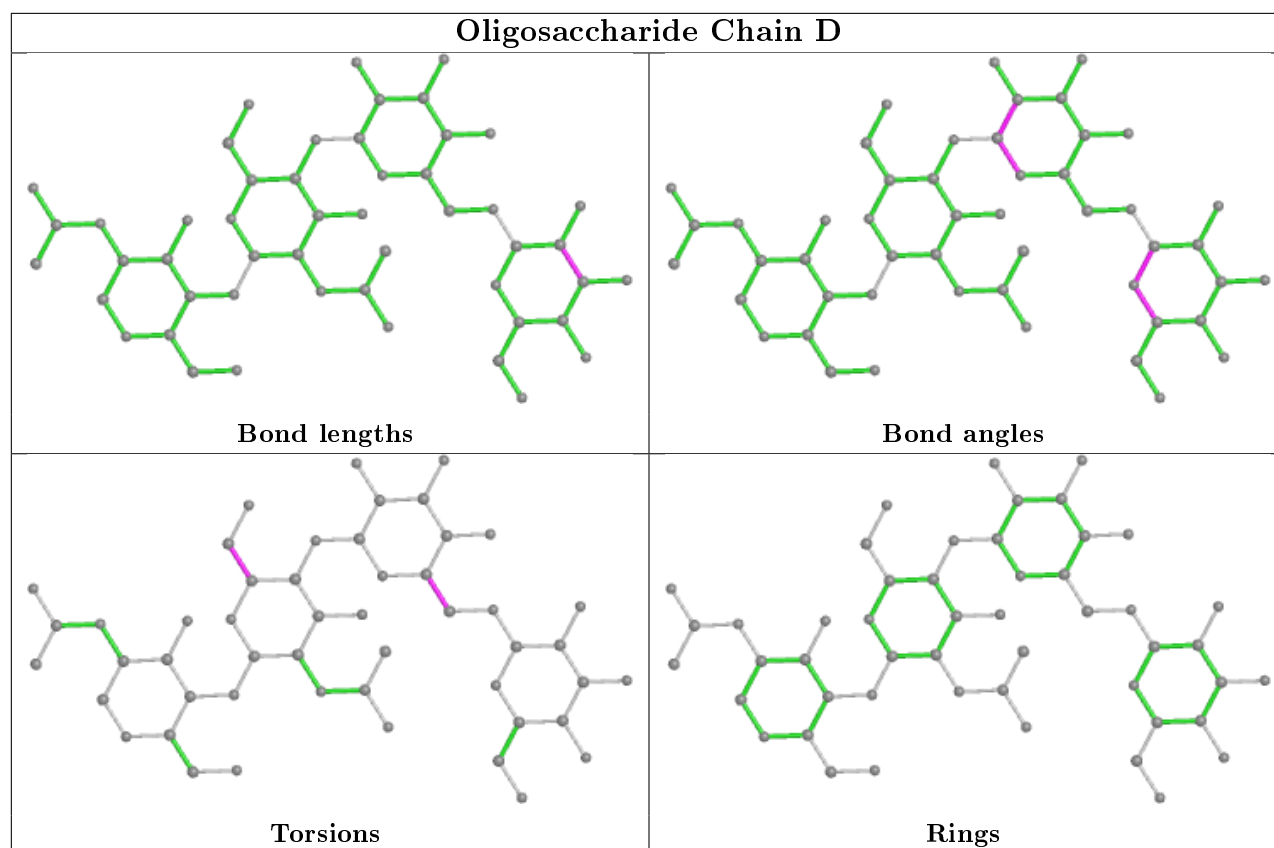
Mol	Chain	Res	Type	Atoms
7	E	5	MAN	C4-C5-C6-O6
4	A	1	NAG	O5-C5-C6-O6
7	E	5	MAN	O5-C5-C6-O6
4	A	2	NAG	O5-C5-C6-O6
7	E	1	NAG	C8-C7-N2-C2
7	E	1	NAG	O7-C7-N2-C2
6	D	2	NAG	C4-C5-C6-O6
4	A	1	NAG	C1-C2-N2-C7
4	A	1	NAG	C3-C2-N2-C7

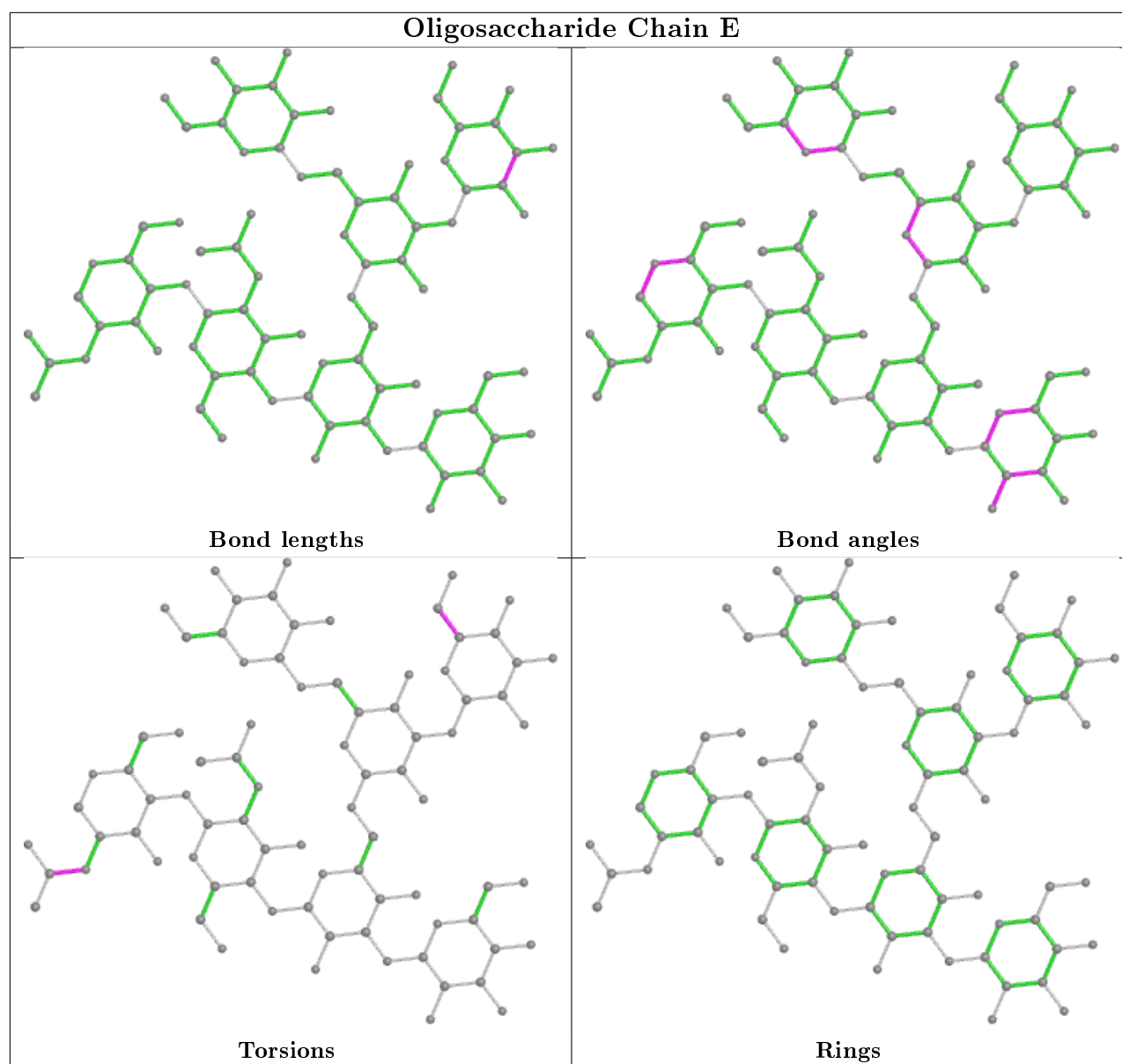
There are no ring outliers.

2 monomers are involved in 1 short contact:

Mol	Chain	Res	Type	Clashes	Symm-Clashes
5	B	3	BMA	1	0
5	B	4	MAN	1	0

The following is a two-dimensional graphical depiction of Mogul quality analysis of bond lengths, bond angles, torsion angles, and ring geometry for oligosaccharide.





5.6 Ligand geometry [i](#)

1 ligand is modelled in this entry.

In the following table, the Counts columns list the number of bonds (or angles) for which Mogul statistics could be retrieved, the number of bonds (or angles) that are observed in the model and the number of bonds (or angles) that are defined in the Chemical Component Dictionary. The Link column lists molecule types, if any, to which the group is linked. The Z score for a bond length (or angle) is the number of standard deviations the observed value is removed from the expected value. A bond length (or angle) with $|Z| > 2$ is considered an outlier worth inspection. RMSZ is the root-mean-square of all Z scores of the bond lengths (or angles).

Mol	Type	Chain	Res	Link	Bond lengths			Bond angles		
					Counts	RMSZ	# Z > 2	Counts	RMSZ	# Z > 2
8	NAG	C	4318	1	14,14,15	1.44	3 (21%)	17,19,21	3.48	7 (41%)

In the following table, the Chirals column lists the number of chiral outliers, the number of chiral centers analysed, the number of these observed in the model and the number defined in the Chemical Component Dictionary. Similar counts are reported in the Torsion and Rings columns. '-' means no outliers of that kind were identified.

Mol	Type	Chain	Res	Link	Chirals	Torsions	Rings
8	NAG	C	4318	1	-	2/6/23/26	0/1/1/1

All (3) bond length outliers are listed below:

Mol	Chain	Res	Type	Atoms	Z	Observed(Å)	Ideal(Å)
8	C	4318	NAG	C2-N2	-2.69	1.41	1.46
8	C	4318	NAG	C3-C2	-2.43	1.47	1.52
8	C	4318	NAG	O5-C1	-2.01	1.40	1.43

All (7) bond angle outliers are listed below:

Mol	Chain	Res	Type	Atoms	Z	Observed(°)	Ideal(°)
8	C	4318	NAG	C2-N2-C7	-7.86	111.71	122.90
8	C	4318	NAG	O5-C5-C6	6.10	116.77	107.20
8	C	4318	NAG	C3-C4-C5	-5.45	100.52	110.24
8	C	4318	NAG	C1-C2-N2	-5.20	101.60	110.49
8	C	4318	NAG	C1-O5-C5	-4.85	105.62	112.19
8	C	4318	NAG	O7-C7-C8	2.77	127.20	122.06
8	C	4318	NAG	O4-C4-C3	-2.04	105.64	110.35

There are no chirality outliers.

All (2) torsion outliers are listed below:

Mol	Chain	Res	Type	Atoms
8	C	4318	NAG	C8-C7-N2-C2
8	C	4318	NAG	O7-C7-N2-C2

There are no ring outliers.

No monomer is involved in short contacts.

5.7 Other polymers

There are no such residues in this entry.

5.8 Polymer linkage issues

There are no chain breaks in this entry.

6 Fit of model and data

6.1 Protein, DNA and RNA chains

In the following table, the column labelled ‘#RSRZ > 2’ contains the number (and percentage) of RSRZ outliers, followed by percent RSRZ outliers for the chain as percentile scores relative to all X-ray entries and entries of similar resolution. The OWAB column contains the minimum, median, 95th percentile and maximum values of the occupancy-weighted average B-factor per residue. The column labelled ‘Q < 0.9’ lists the number of (and percentage) of residues with an average occupancy less than 0.9.

Mol	Chain	Analysed	<RSRZ>	#RSRZ>2	OWAB(Å ²)	Q<0.9
1	C	161/264 (60%)	0.20	14 (8%) 10 8	37, 61, 114, 151	0
2	H	242/254 (95%)	-0.16	6 (2%) 57 55	29, 47, 77, 105	0
3	L	213/214 (99%)	-0.17	1 (0%) 91 90	31, 55, 84, 108	1 (0%)
All	All	616/732 (84%)	-0.07	21 (3%) 45 43	29, 53, 90, 151	1 (0%)

All (21) RSRZ outliers are listed below:

Mol	Chain	Res	Type	RSRZ
2	H	26	GLY	5.7
2	H	2	VAL	5.6
1	C	569	CYS	5.0
1	C	597	CYS	4.5
1	C	450	SER	3.6
1	C	449	ALA	3.0
2	H	3	GLN	2.8
2	H	27	GLY	2.8
1	C	546	GLN	2.7
1	C	451	GLY	2.6
1	C	492	ARG	2.5
1	C	420	TRP	2.5
1	C	491	PRO	2.5
1	C	567	PRO	2.5
1	C	452	CYS	2.5
1	C	634	GLY	2.4
3	L	76	SER	2.3
2	H	73	GLU	2.2
1	C	448	ASN	2.1
2	H	24	ALA	2.1
1	C	545	PRO	2.0

6.2 Non-standard residues in protein, DNA, RNA chains ⓘ

There are no non-standard protein/DNA/RNA residues in this entry.

6.3 Carbohydrates ⓘ

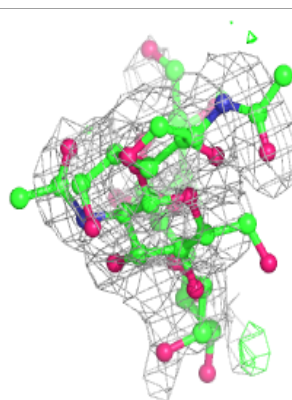
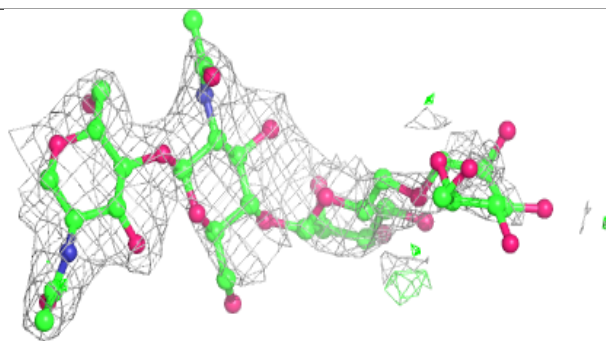
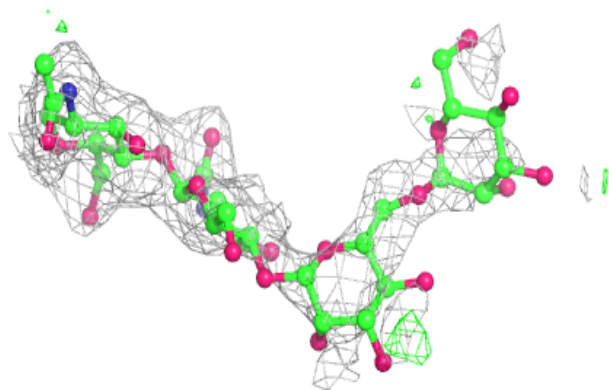
In the following table, the Atoms column lists the number of modelled atoms in the group and the number defined in the chemical component dictionary. The B-factors column lists the minimum, median, 95th percentile and maximum values of B factors of atoms in the group. The column labelled 'Q< 0.9' lists the number of atoms with occupancy less than 0.9.

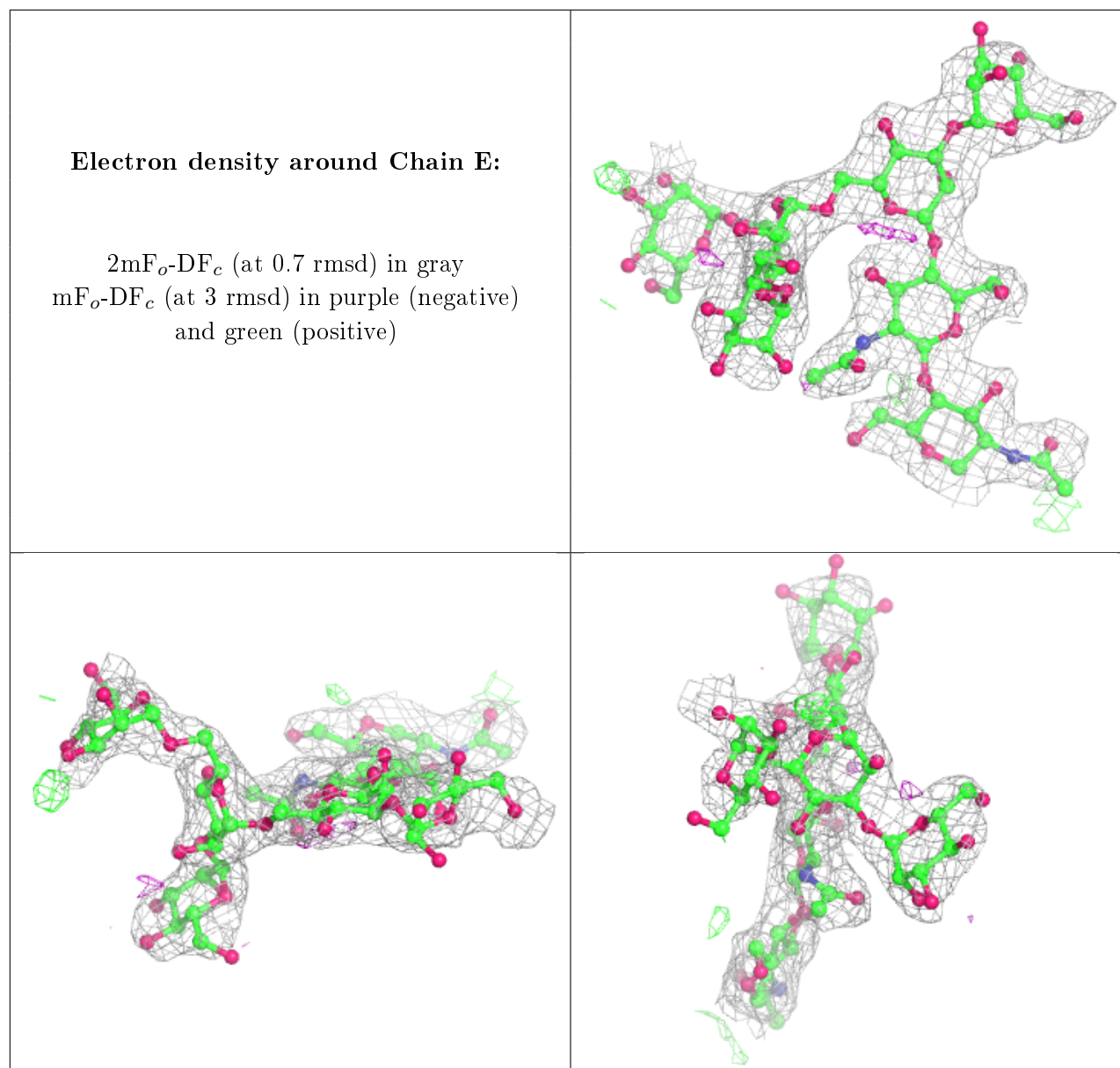
Mol	Type	Chain	Res	Atoms	RSCC	RSR	B-factors(Å ²)	Q<0.9
6	MAN	D	4	11/12	0.46	0.41	135,145,149,151	0
5	BMA	B	3	11/12	0.49	0.28	129,141,153,155	0
5	MAN	B	4	11/12	0.50	0.54	139,154,157,157	0
4	NAG	A	2	14/15	0.66	0.37	110,130,139,140	0
6	NAG	D	2	14/15	0.74	0.24	90,117,136,147	0
7	MAN	E	6	11/12	0.74	0.26	102,116,123,125	0
6	BMA	D	3	11/12	0.77	0.27	148,151,154,156	0
7	MAN	E	7	11/12	0.87	0.21	87,107,122,124	0
5	NAG	B	2	14/15	0.88	0.16	82,101,107,111	0
6	NAG	D	1	14/15	0.89	0.12	63,80,91,102	0
4	NAG	A	1	14/15	0.91	0.11	60,84,96,112	0
7	MAN	E	4	11/12	0.92	0.13	58,68,79,93	0
7	BMA	E	3	11/12	0.92	0.12	62,68,78,90	0
7	MAN	E	5	11/12	0.92	0.17	73,83,90,97	0
5	NAG	B	1	14/15	0.94	0.12	52,66,78,78	0
7	NAG	E	2	14/15	0.96	0.10	46,49,61,68	0
7	NAG	E	1	14/15	0.97	0.10	44,51,65,69	0

The following is a graphical depiction of the model fit to experimental electron density for oligosaccharide. Each fit is shown from different orientation to approximate a three-dimensional view.

Electron density around Chain D:

$2mF_o-DF_c$ (at 0.7 rmsd) in gray
 mF_o-DF_c (at 3 rmsd) in purple (negative)
and green (positive)





6.4 Ligands [i](#)

In the following table, the Atoms column lists the number of modelled atoms in the group and the number defined in the chemical component dictionary. The B-factors column lists the minimum, median, 95th percentile and maximum values of B factors of atoms in the group. The column labelled 'Q< 0.9' lists the number of atoms with occupancy less than 0.9.

Mol	Type	Chain	Res	Atoms	RSCC	RSR	B-factors(Å ²)	Q<0.9
8	NAG	C	4318	14/15	0.70	0.26	74,93,100,101	0

6.5 Other polymers [i](#)

There are no such residues in this entry.