



# wwPDB X-ray Structure Validation Summary Report ⓘ

Sep 21, 2020 – 04:48 PM BST

PDB ID : 1USX  
Title : Crystal structure of the Newcastle disease virus hemagglutinin-neuraminidase complexed with thiosialoside  
Authors : Zaitsev, V.; Itzstein, M.; Groves, D.; Kiefel, M.; Takimoto, T.; Portner, A.; Taylor, G.  
Deposited on : 2003-12-01  
Resolution : 2.70 Å(reported)

This is a wwPDB X-ray Structure Validation Summary Report for a publicly released PDB entry.

We welcome your comments at [validation@mail.wwpdb.org](mailto:validation@mail.wwpdb.org)

A user guide is available at

<https://www.wwpdb.org/validation/2017/XrayValidationReportHelp>

with specific help available everywhere you see the ⓘ symbol.

---

The following versions of software and data (see [references ⓘ](#)) were used in the production of this report:

MolProbity	:	4.02b-467
Mogul	:	1.8.5 (274361), CSD as541be (2020)
Xtriage (Phenix)	:	NOT EXECUTED
EDS	:	NOT EXECUTED
buster-report	:	1.1.7 (2018)
Percentile statistics	:	20191225.v01 (using entries in the PDB archive December 25th 2019)
Ideal geometry (proteins)	:	Engh & Huber (2001)
Ideal geometry (DNA, RNA)	:	Parkinson et al. (1996)
Validation Pipeline (wwPDB-VP)	:	2.14.6

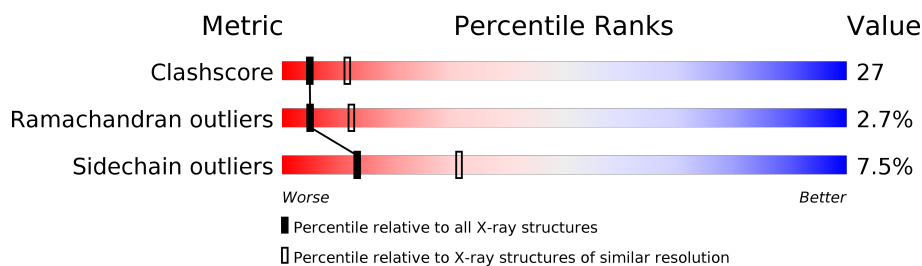
# 1 Overall quality at a glance

The following experimental techniques were used to determine the structure:

*X-RAY DIFFRACTION*

The reported resolution of this entry is 2.70 Å.

Percentile scores (ranging between 0-100) for global validation metrics of the entry are shown in the following graphic. The table shows the number of entries on which the scores are based.



Metric	Whole archive (#Entries)	Similar resolution (#Entries, resolution range(Å))
Clashscore	141614	3122 (2.70-2.70)
Ramachandran outliers	138981	3069 (2.70-2.70)
Sidechain outliers	138945	3069 (2.70-2.70)

The table below summarises the geometric issues observed across the polymeric chains and their fit to the electron density. The red, orange, yellow and green segments on the lower bar indicate the fraction of residues that contain outliers for  $\geq 3$ , 2, 1 and 0 types of geometric quality criteria respectively. A grey segment represents the fraction of residues that are not modelled. The numeric value for each fraction is indicated below the corresponding segment, with a dot representing fractions  $\leq 5\%$ .

Note EDS was not executed.

Mol	Chain	Length	Quality of chain
1	A	454	
1	B	454	
1	C	454	
2	D	2	
2	E	2	
2	F	2	

## 2 Entry composition

There are 3 unique types of molecules in this entry. The entry contains 10497 atoms, of which 0 are hydrogens and 0 are deuteriums.

In the tables below, the ZeroOcc column contains the number of atoms modelled with zero occupancy, the AltConf column contains the number of residues with at least one atom in alternate conformation and the Trace column contains the number of residues modelled with at most 2 atoms.

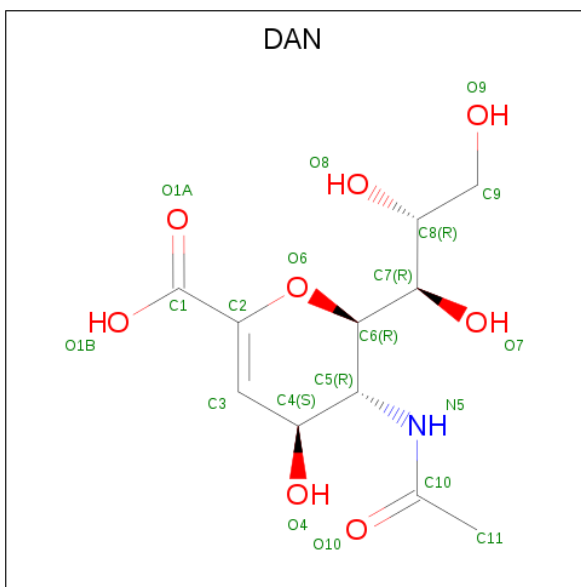
- Molecule 1 is a protein called HEMAGGLUTININ-NEURAMINIDASE GLYCOPROTEIN.

Mol	Chain	Residues	Atoms					ZeroOcc	AltConf	Trace
1	A	447	Total	C	N	O	S	0	0	1
			3446	2172	588	667	19			
1	B	447	Total	C	N	O	S	0	0	1
			3446	2172	588	667	19			
1	C	447	Total	C	N	O	S	0	0	1
			3446	2172	588	667	19			

- Molecule 2 is an oligosaccharide called N-acetyl-alpha-neuraminic acid-(2-6)-methyl 6-thio-beta-D-galactopyranoside.

Mol	Chain	Residues	Atoms					ZeroOcc	AltConf	Trace
2	D	2	Total	C	N	O	S	0	0	0
			33	18	1	13	1			
2	E	2	Total	C	N	O	S	0	0	0
			33	18	1	13	1			
2	F	2	Total	C	N	O	S	0	0	0
			33	18	1	13	1			

- Molecule 3 is 2-DEOXY-2,3-DEHYDRO-N-ACETYL-NEURAMINIC ACID (three-letter code: DAN) (formula: C<sub>11</sub>H<sub>17</sub>NO<sub>8</sub>).



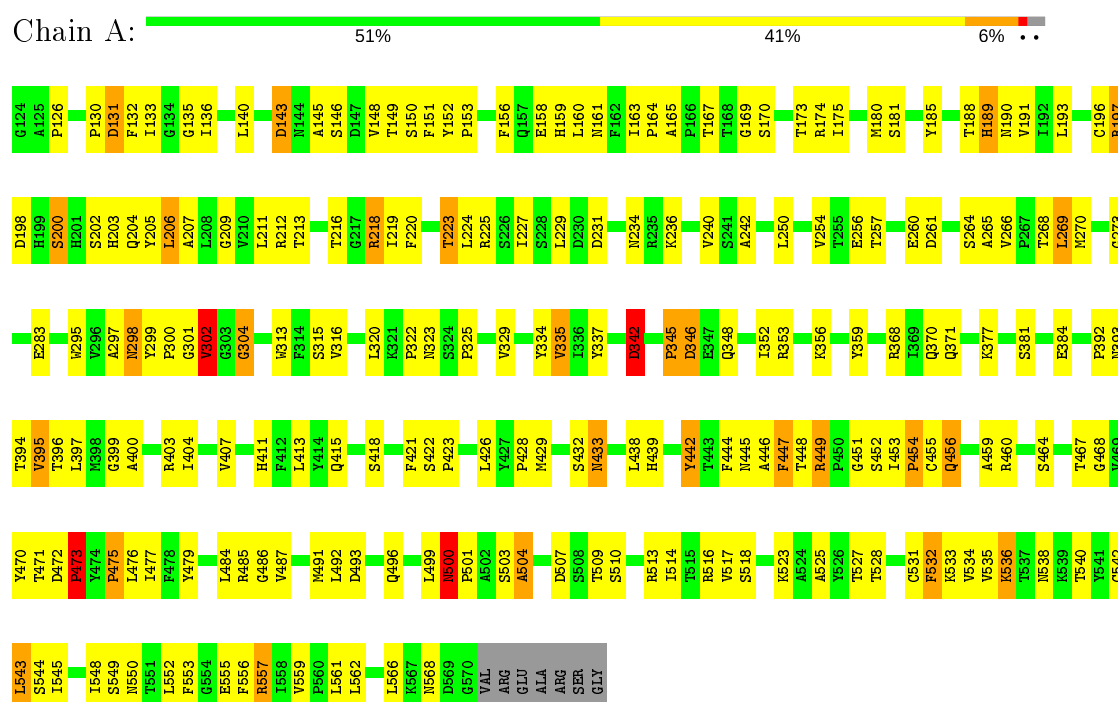
Mol	Chain	Residues	Atoms				ZeroOcc	AltConf
3	A	1	Total	C	N	O	0	0
			20	11	1	8		
3	B	1	Total	C	N	O	0	0
			20	11	1	8		
3	C	1	Total	C	N	O	0	0
			20	11	1	8		

### 3 Residue-property plots

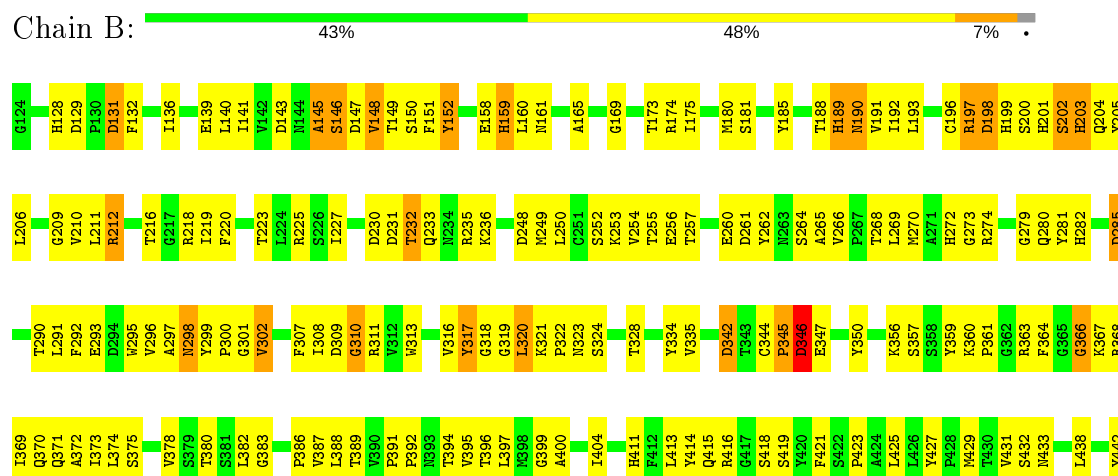
These plots are drawn for all protein, RNA, DNA and oligosaccharide chains in the entry. The first graphic for a chain summarises the proportions of the various outlier classes displayed in the second graphic. The second graphic shows the sequence view annotated by issues in geometry. Residues are color-coded according to the number of geometric quality criteria for which they contain at least one outlier: green = 0, yellow = 1, orange = 2 and red = 3 or more. Stretches of 2 or more consecutive residues without any outlier are shown as a green connector. Residues present in the sample, but not in the model, are shown in grey.

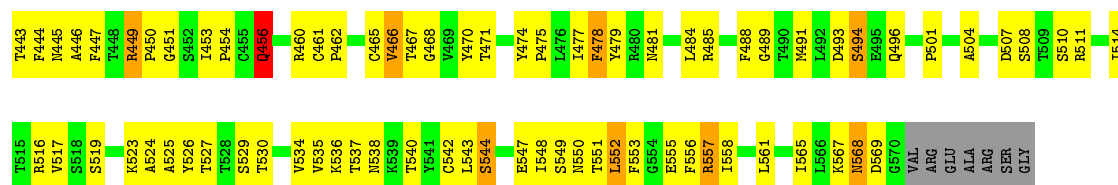
Note EDS was not executed.

#### • Molecule 1: HEMAGGLUTININ-NEURAMINIDASE GLYCOPROTEIN



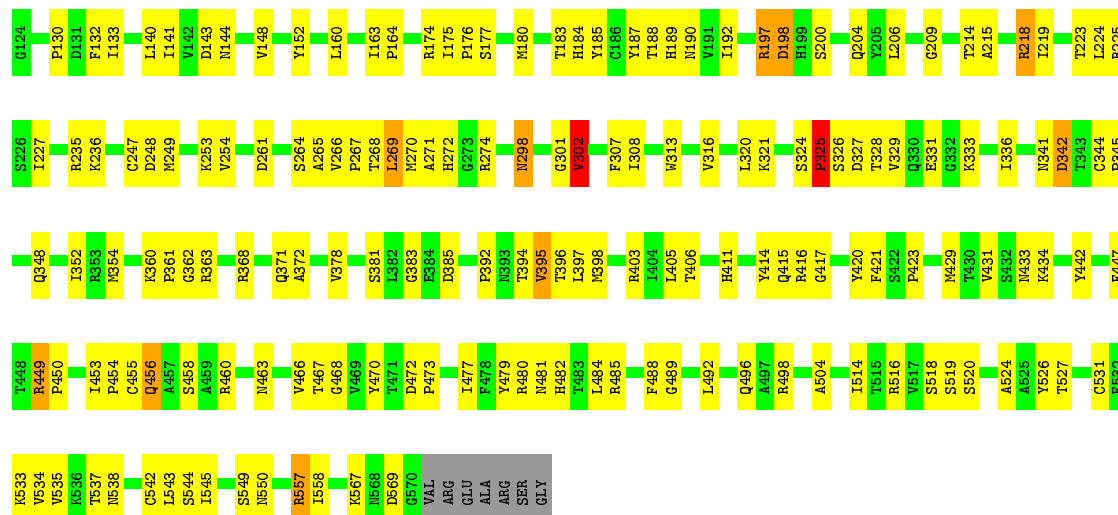
#### • Molecule 1: HEMAGGLUTININ-NEURAMINIDASE GLYCOPROTEIN





• Molecule 1: HEMAGGLUTININ-NEURAMINIDASE GLYCOPROTEIN

Chain C: 61% 34%



• Molecule 2: N-acetyl-alpha-neuraminic acid-(2-6)-methyl 6-thio-beta-D-galactopyranoside

Chain D: 50% 50%



• Molecule 2: N-acetyl-alpha-neuraminic acid-(2-6)-methyl 6-thio-beta-D-galactopyranoside

Chain E: 100%



• Molecule 2: N-acetyl-alpha-neuraminic acid-(2-6)-methyl 6-thio-beta-D-galactopyranoside

Chain F: 100%



## 4 Data and refinement statistics

Xtriage (Phenix) and EDS were not executed - this section is therefore incomplete.

Property	Value	Source
Space group	P 41 21 2	Depositor
Cell constants a, b, c, $\alpha$ , $\beta$ , $\gamma$	115.07Å 115.07Å 283.96Å 90.00° 90.00° 90.00°	Depositor
Resolution (Å)	12.00 – 2.70	Depositor
% Data completeness (in resolution range)	79.6 (12.00-2.70)	Depositor
$R_{merge}$	0.08	Depositor
$R_{sym}$	(Not available)	Depositor
Refinement program	CNS 1.1	Depositor
R, $R_{free}$	0.225 , 0.289	Depositor
Estimated twinning fraction	No twinning to report.	Xtriage
Total number of atoms	10497	wwPDB-VP
Average B, all atoms (Å <sup>2</sup> )	30.0	wwPDB-VP

## 5 Model quality [i](#)

### 5.1 Standard geometry [i](#)

Bond lengths and bond angles in the following residue types are not validated in this section: SIA, DAN, WIA

The Z score for a bond length (or angle) is the number of standard deviations the observed value is removed from the expected value. A bond length (or angle) with  $|Z| > 5$  is considered an outlier worth inspection. RMSZ is the root-mean-square of all Z scores of the bond lengths (or angles).

Mol	Chain	Bond lengths		Bond angles	
		RMSZ	# Z  >5	RMSZ	# Z  >5
1	A	0.40	0/3531	0.68	1/4804 (0.0%)
1	B	0.43	0/3531	0.69	0/4804
1	C	0.40	0/3531	0.71	0/4804
All	All	0.41	0/10593	0.69	1/14412 (0.0%)

There are no bond length outliers.

All (1) bond angle outliers are listed below:

Mol	Chain	Res	Type	Atoms	Z	Observed(°)	Ideal(°)
1	A	442	TYR	N-CA-C	-5.28	96.76	111.00

There are no chirality outliers.

There are no planarity outliers.

### 5.2 Too-close contacts [i](#)

In the following table, the Non-H and H(model) columns list the number of non-hydrogen atoms and hydrogen atoms in the chain respectively. The H(added) column lists the number of hydrogen atoms added and optimized by MolProbity. The Clashes column lists the number of clashes within the asymmetric unit, whereas Symm-Clashes lists symmetry related clashes.

Mol	Chain	Non-H	H(model)	H(added)	Clashes	Symm-Clashes
1	A	3446	0	3342	184	0
1	B	3446	0	3342	253	0
1	C	3446	0	3342	147	0
2	D	33	0	27	2	0
2	E	33	0	24	0	0
2	F	33	0	24	1	0
3	A	20	0	16	0	0

*Continued on next page...*



*Continued from previous page...*

Mol	Chain	Non-H	H(model)	H(added)	Clashes	Symm-Clashes
3	B	20	0	16	1	0
3	C	20	0	16	1	0
All	All	10497	0	10149	567	0

The all-atom clashscore is defined as the number of clashes found per 1000 atoms (including hydrogen atoms). The all-atom clashscore for this structure is 27.

The worst 5 of 567 close contacts within the same asymmetric unit are listed below, sorted by their clash magnitude.

Atom-1	Atom-2	Interatomic distance (Å)	Clash overlap (Å)
1:A:219:ILE:HD11	1:A:562:LEU:HD21	1.43	1.00
1:B:456:GLN:H	1:B:456:GLN:NE2	1.58	1.00
1:A:550:ASN:HB2	1:A:557:ARG:HG2	1.44	0.99
1:A:500:ASN:HB3	1:A:516:ARG:HH22	1.29	0.96
1:C:268:THR:H	1:C:298:ASN:HD21	1.13	0.93

There are no symmetry-related clashes.

## 5.3 Torsion angles [i](#)

### 5.3.1 Protein backbone [i](#)

In the following table, the Percentiles column shows the percent Ramachandran outliers of the chain as a percentile score with respect to all X-ray entries followed by that with respect to entries of similar resolution.

The Analysed column shows the number of residues for which the backbone conformation was analysed, and the total number of residues.

Mol	Chain	Analysed	Favoured	Allowed	Outliers	Percentiles	
1	A	445/454 (98%)	391 (88%)	39 (9%)	15 (3%)	3	8
1	B	445/454 (98%)	376 (84%)	52 (12%)	17 (4%)	3	7
1	C	445/454 (98%)	394 (88%)	47 (11%)	4 (1%)	17	40
All	All	1335/1362 (98%)	1161 (87%)	138 (10%)	36 (3%)	5	12

5 of 36 Ramachandran outliers are listed below:

Mol	Chain	Res	Type
1	A	200	SER

*Continued on next page...*

*Continued from previous page...*

Mol	Chain	Res	Type
1	A	302	VAL
1	A	346	ASP
1	B	146	SER
1	B	552	LEU

### 5.3.2 Protein sidechains ⓘ

In the following table, the Percentiles column shows the percent sidechain outliers of the chain as a percentile score with respect to all X-ray entries followed by that with respect to entries of similar resolution.

The Analysed column shows the number of residues for which the sidechain conformation was analysed, and the total number of residues.

Mol	Chain	Analysed	Rotameric	Outliers	Percentiles	
1	A	387/392 (99%)	353 (91%)	34 (9%)	10	23
1	B	387/392 (99%)	356 (92%)	31 (8%)	12	27
1	C	387/392 (99%)	365 (94%)	22 (6%)	20	44
All	All	1161/1176 (99%)	1074 (92%)	87 (8%)	13	31

5 of 87 residues with a non-rotameric sidechain are listed below:

Mol	Chain	Res	Type
1	B	189	HIS
1	B	285	ASP
1	C	433	ASN
1	B	190	ASN
1	B	212	ARG

Some sidechains can be flipped to improve hydrogen bonding and reduce clashes. 5 of 26 such sidechains are listed below:

Mol	Chain	Res	Type
1	B	199	HIS
1	B	280	GLN
1	C	463	ASN
1	B	204	GLN
1	B	233	GLN

### 5.3.3 RNA ⓘ

There are no RNA molecules in this entry.

## 5.4 Non-standard residues in protein, DNA, RNA chains ⓘ

There are no non-standard protein/DNA/RNA residues in this entry.

## 5.5 Carbohydrates ⓘ

6 monosaccharides are modelled in this entry.

In the following table, the Counts columns list the number of bonds (or angles) for which Mogul statistics could be retrieved, the number of bonds (or angles) that are observed in the model and the number of bonds (or angles) that are defined in the Chemical Component Dictionary. The Link column lists molecule types, if any, to which the group is linked. The Z score for a bond length (or angle) is the number of standard deviations the observed value is removed from the expected value. A bond length (or angle) with  $|Z| > 2$  is considered an outlier worth inspection. RMSZ is the root-mean-square of all Z scores of the bond lengths (or angles).

Mol	Type	Chain	Res	Link	Bond lengths			Bond angles		
					Counts	RMSZ	# $ Z  > 2$	Counts	RMSZ	# $ Z  > 2$
2	WIA	D	1	2	13,13,13	3.83	5 (38%)	18,18,18	1.68	3 (16%)
2	SIA	D	2	2	17,20,21	5.35	12 (70%)	21,28,31	2.45	9 (42%)
2	WIA	E	1	2	13,13,13	3.71	8 (61%)	18,18,18	1.49	3 (16%)
2	SIA	E	2	2	17,20,21	5.61	11 (64%)	21,28,31	2.64	9 (42%)
2	WIA	F	1	2	13,13,13	3.81	4 (30%)	18,18,18	1.65	2 (11%)
2	SIA	F	2	2	17,20,21	5.44	9 (52%)	21,28,31	2.55	10 (47%)

In the following table, the Chirals column lists the number of chiral outliers, the number of chiral centers analysed, the number of these observed in the model and the number defined in the Chemical Component Dictionary. Similar counts are reported in the Torsion and Rings columns. '-' means no outliers of that kind were identified.

Mol	Type	Chain	Res	Link	Chirals	Torsions	Rings
2	WIA	D	1	2	-	1/4/24/24	0/1/1/1
2	SIA	D	2	2	-	2/14/34/38	0/1/1/1
2	WIA	E	1	2	-	4/4/24/24	0/1/1/1
2	SIA	E	2	2	-	5/14/34/38	0/1/1/1
2	WIA	F	1	2	-	1/4/24/24	0/1/1/1
2	SIA	F	2	2	-	4/14/34/38	0/1/1/1

The worst 5 of 49 bond length outliers are listed below:

Mol	Chain	Res	Type	Atoms	Z	Observed(Å)	Ideal(Å)
2	E	2	SIA	O8-C8	-16.46	1.08	1.43
2	D	2	SIA	O8-C8	-15.99	1.09	1.43
2	F	2	SIA	O8-C8	-15.72	1.10	1.43
2	F	1	WIA	C6-S6	-12.08	1.56	1.81
2	E	2	SIA	C11-C10	-11.86	1.25	1.50

The worst 5 of 36 bond angle outliers are listed below:

Mol	Chain	Res	Type	Atoms	Z	Observed(°)	Ideal(°)
2	D	1	WIA	O1-C1-C2	5.63	114.75	108.15
2	F	2	SIA	C9-C8-C7	-5.36	100.79	112.41
2	D	2	SIA	C9-C8-C7	-5.33	100.85	112.41
2	E	2	SIA	C8-C7-C6	-5.29	102.99	113.03
2	F	1	WIA	O1-C1-C2	5.20	114.24	108.15

There are no chirality outliers.

5 of 17 torsion outliers are listed below:

Mol	Chain	Res	Type	Atoms
2	F	1	WIA	O5-C5-C6-S6
2	E	2	SIA	O8-C8-C9-O9
2	D	2	SIA	C7-C8-C9-O9
2	D	2	SIA	O8-C8-C9-O9
2	E	1	WIA	C4-C5-C6-S6

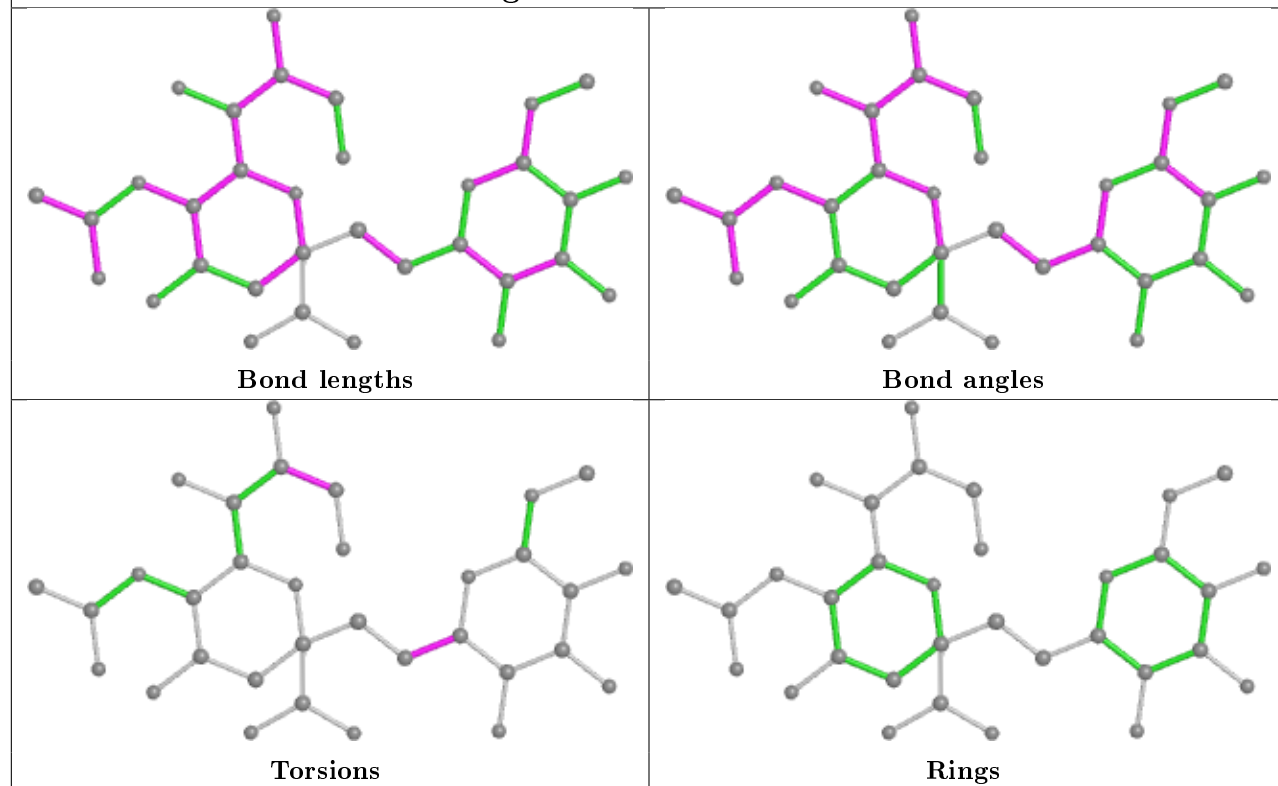
There are no ring outliers.

3 monomers are involved in 3 short contacts:

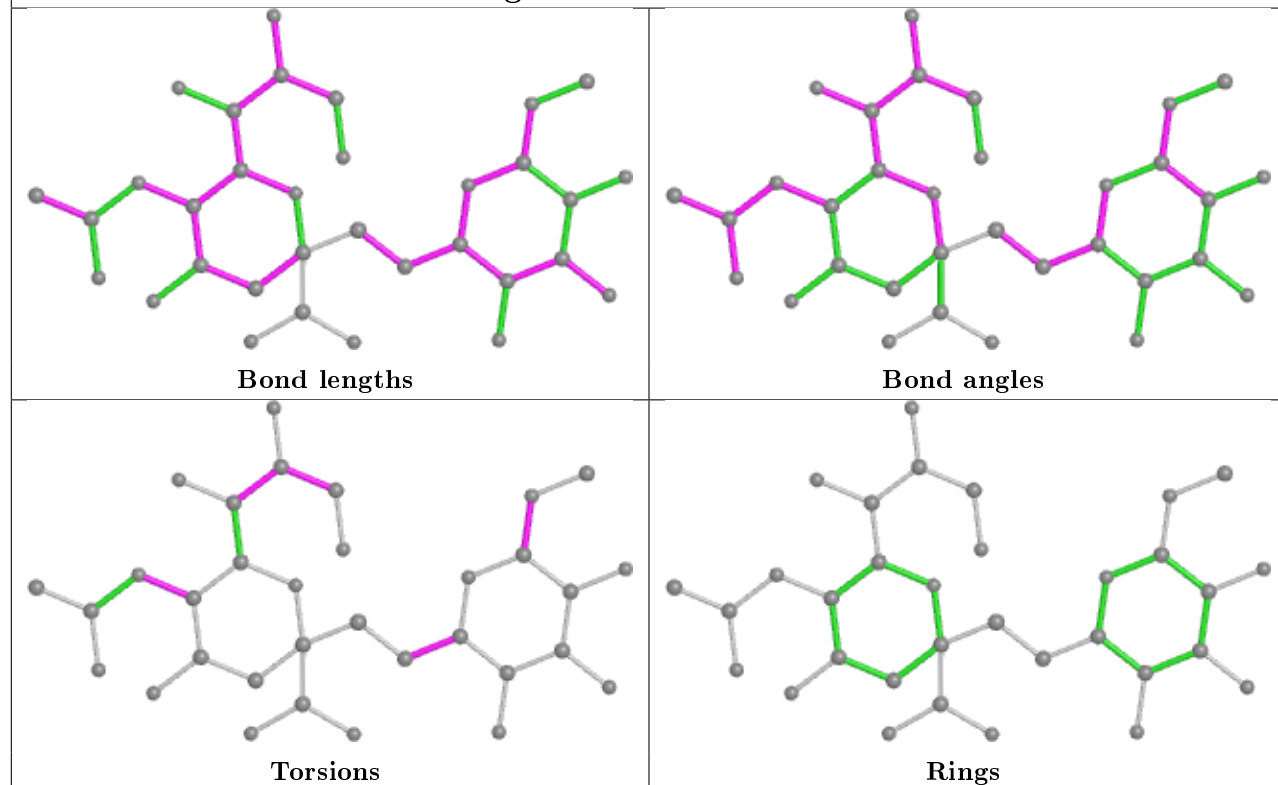
Mol	Chain	Res	Type	Clashes	Symm-Clashes
2	F	1	WIA	1	0
2	F	2	SIA	1	0
2	D	2	SIA	2	0

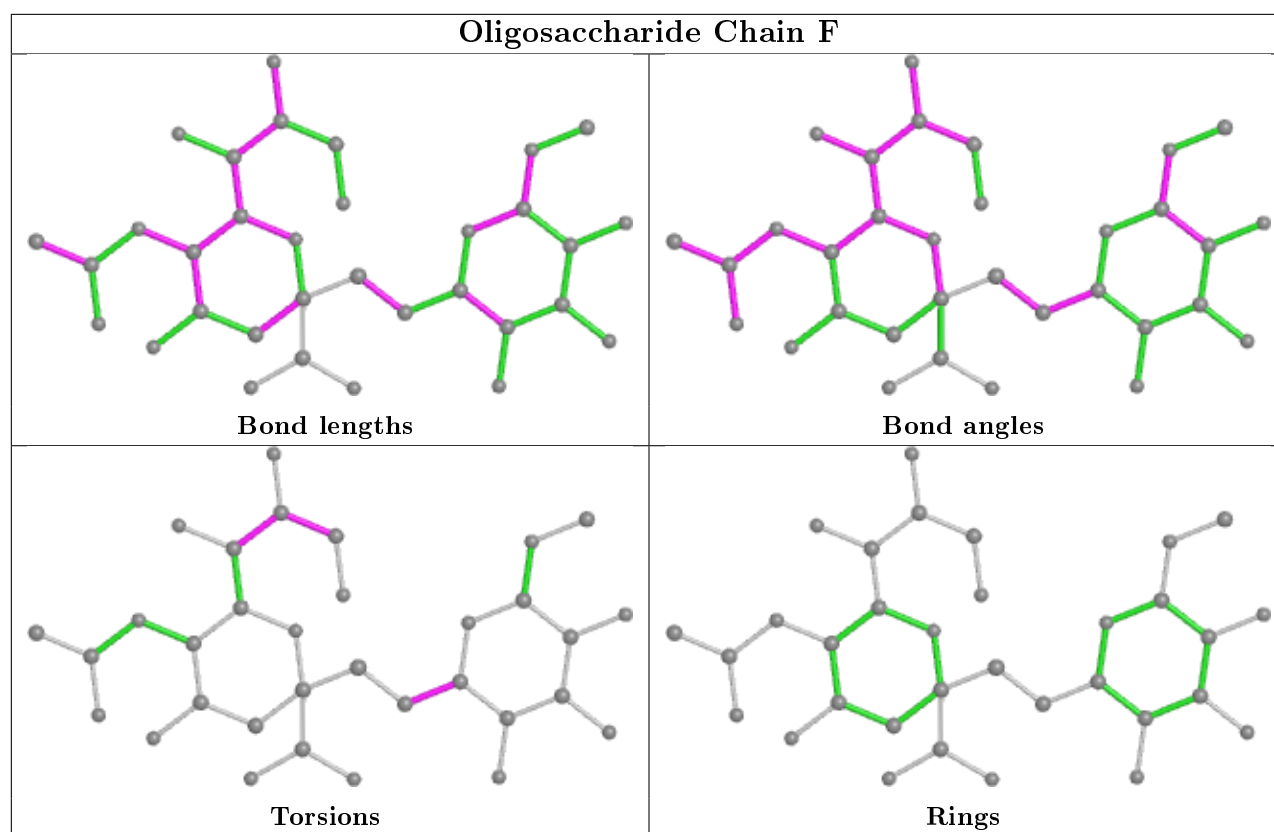
The following is a two-dimensional graphical depiction of Mogul quality analysis of bond lengths, bond angles, torsion angles, and ring geometry for oligosaccharide.

## Oligosaccharide Chain D



## Oligosaccharide Chain E





## 5.6 Ligand geometry [i](#)

3 ligands are modelled in this entry.

In the following table, the Counts columns list the number of bonds (or angles) for which Mogul statistics could be retrieved, the number of bonds (or angles) that are observed in the model and the number of bonds (or angles) that are defined in the Chemical Component Dictionary. The Link column lists molecule types, if any, to which the group is linked. The Z score for a bond length (or angle) is the number of standard deviations the observed value is removed from the expected value. A bond length (or angle) with  $|Z| > 2$  is considered an outlier worth inspection. RMSZ is the root-mean-square of all Z scores of the bond lengths (or angles).

Mol	Type	Chain	Res	Link	Bond lengths			Bond angles		
					Counts	RMSZ	$\# Z  > 2$	Counts	RMSZ	$\# Z  > 2$
3	DAN	B	1572	-	17,20,20	1.54	3 (17%)	18,28,28	1.78	3 (16%)
3	DAN	C	1572	-	17,20,20	1.81	2 (11%)	18,28,28	1.37	2 (11%)
3	DAN	A	1570	-	17,20,20	1.82	2 (11%)	18,28,28	1.36	2 (11%)

In the following table, the Chirals column lists the number of chiral outliers, the number of chiral centers analysed, the number of these observed in the model and the number defined in the Chemical Component Dictionary. Similar counts are reported in the Torsion and Rings columns. '-' means no outliers of that kind were identified.

Mol	Type	Chain	Res	Link	Chirals	Torsions	Rings
3	DAN	B	1572	-	-	1/14/34/34	0/1/1/1
3	DAN	C	1572	-	-	0/14/34/34	0/1/1/1
3	DAN	A	1570	-	-	0/14/34/34	0/1/1/1

The worst 5 of 7 bond length outliers are listed below:

Mol	Chain	Res	Type	Atoms	Z	Observed(Å)	Ideal(Å)
3	A	1570	DAN	C3-C2	6.17	1.40	1.32
3	C	1572	DAN	C3-C2	6.17	1.40	1.32
3	B	1572	DAN	C3-C2	3.28	1.36	1.32
3	B	1572	DAN	O8-C8	3.11	1.49	1.43
3	B	1572	DAN	O6-C6	-2.84	1.41	1.46

The worst 5 of 7 bond angle outliers are listed below:

Mol	Chain	Res	Type	Atoms	Z	Observed(°)	Ideal(°)
3	B	1572	DAN	C4-C3-C2	-4.98	113.18	121.60
3	C	1572	DAN	O4-C4-C3	-4.07	100.16	109.31
3	A	1570	DAN	O4-C4-C3	-4.06	100.17	109.31
3	B	1572	DAN	C8-C7-C6	-3.08	107.19	113.03
3	B	1572	DAN	O6-C2-C3	2.68	127.96	124.33

There are no chirality outliers.

All (1) torsion outliers are listed below:

Mol	Chain	Res	Type	Atoms
3	B	1572	DAN	O8-C8-C9-O9

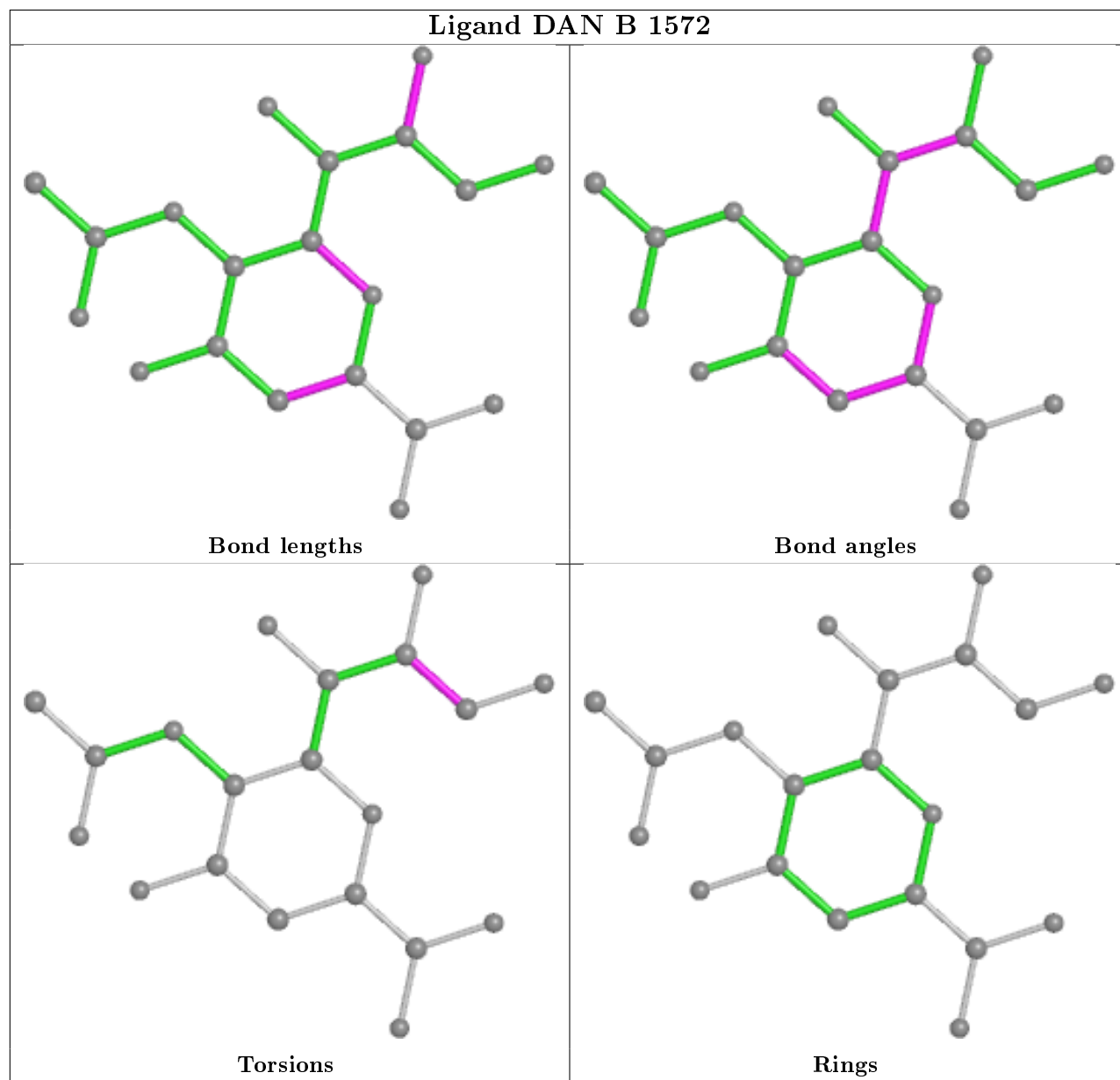
There are no ring outliers.

2 monomers are involved in 2 short contacts:

Mol	Chain	Res	Type	Clashes	Symm-Clashes
3	B	1572	DAN	1	0
3	C	1572	DAN	1	0

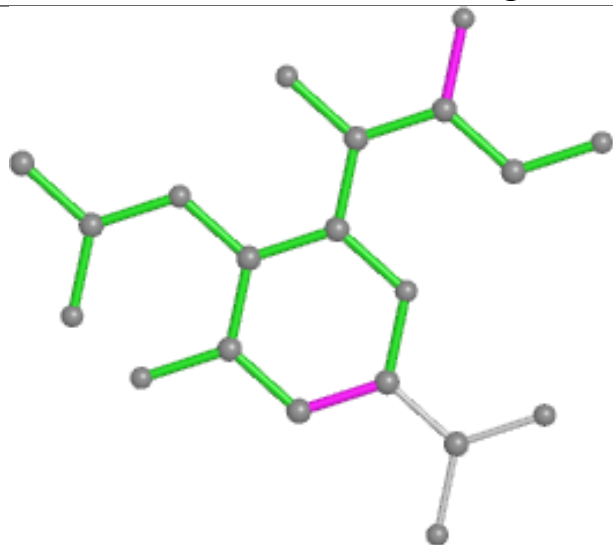
The following is a two-dimensional graphical depiction of Mogul quality analysis of bond lengths, bond angles, torsion angles, and ring geometry for all instances of the Ligand of Interest. In addition, ligands with molecular weight > 250 and outliers as shown on the validation Tables will also be included. For torsion angles, if less than 5% of the Mogul distribution of torsion angles is within 10 degrees of the torsion angle in question, then that torsion angle is considered an outlier. Any bond that is central to one or more torsion angles identified as an outlier by Mogul will be highlighted in the graph. For rings, the root-mean-square deviation (RMSD) between the ring

in question and similar rings identified by Mogul is calculated over all ring torsion angles. If the average RMSD is greater than 60 degrees and the minimal RMSD between the ring in question and any Mogul-identified rings is also greater than 60 degrees, then that ring is considered an outlier. The outliers are highlighted in purple. The color gray indicates Mogul did not find sufficient equivalents in the CSD to analyse the geometry.

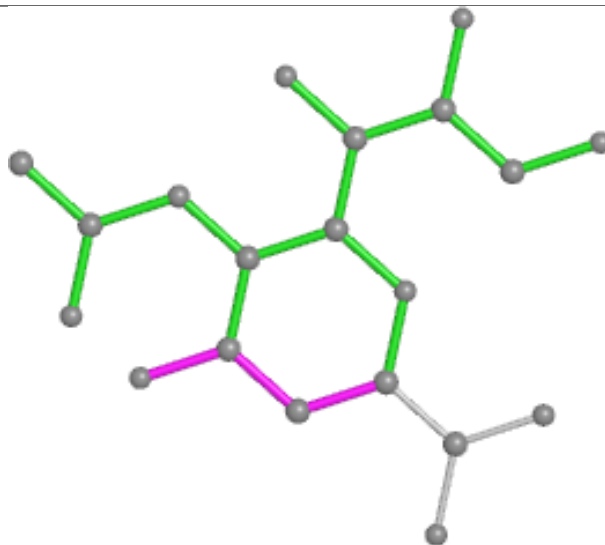




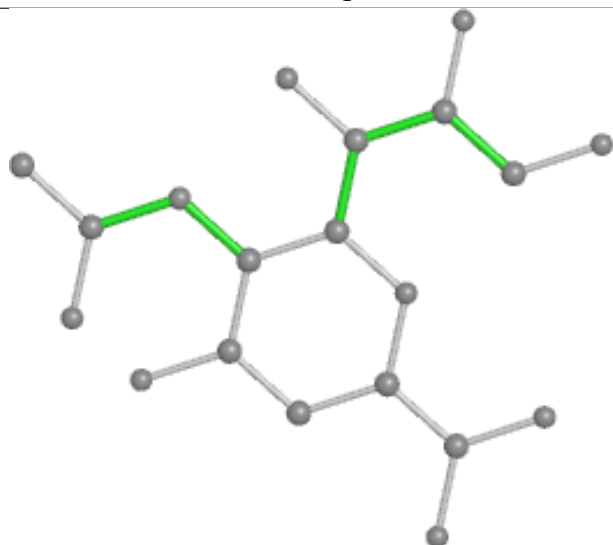
## Ligand DAN C 1572



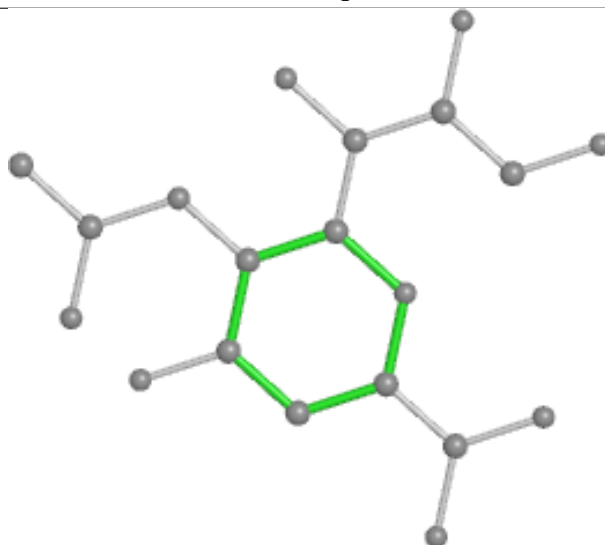
Bond lengths



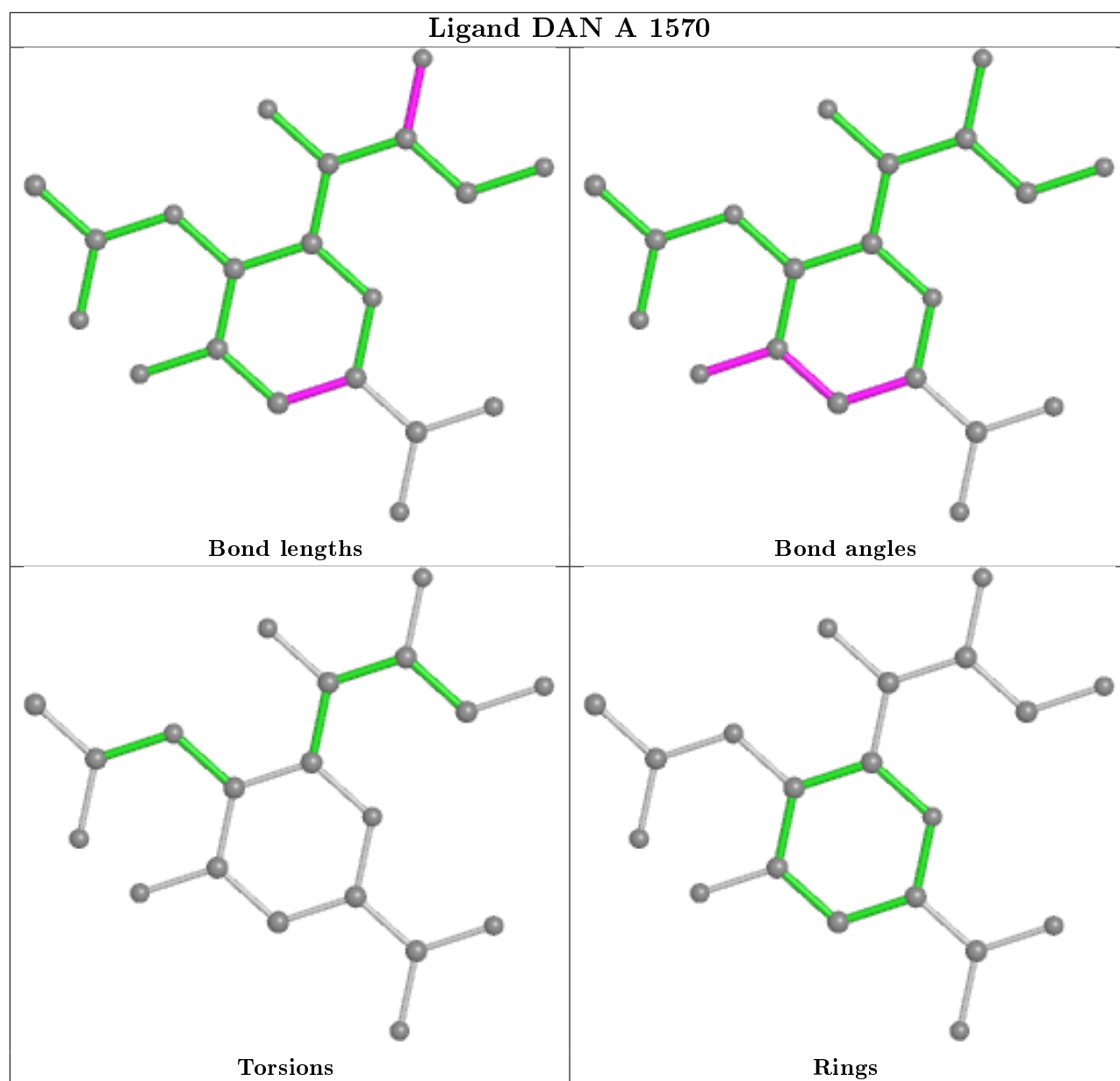
Bond angles



Torsions



Rings



## 5.7 Other polymers [i](#)

There are no such residues in this entry.

## 5.8 Polymer linkage issues [i](#)

There are no chain breaks in this entry.

## 6 Fit of model and data ⓘ

### 6.1 Protein, DNA and RNA chains ⓘ

EDS was not executed - this section is therefore empty.

### 6.2 Non-standard residues in protein, DNA, RNA chains ⓘ

EDS was not executed - this section is therefore empty.

### 6.3 Carbohydrates ⓘ

EDS was not executed - this section is therefore empty.

### 6.4 Ligands ⓘ

EDS was not executed - this section is therefore empty.

### 6.5 Other polymers ⓘ

EDS was not executed - this section is therefore empty.