



Full wwPDB X-ray Structure Validation Report ⓘ

Jul 5, 2022 – 04:49 PM EDT

PDB ID : 7US7
Title : Structure of human neuronal nitric oxide synthase R354A/G357D mutant heme domain in complex with 6-(4-(dimethylamino)but-1-yn-1-yl)-4-methylpyridin-2-amine
Authors : Li, H.; Poulos, T.L.
Deposited on : 2022-04-23
Resolution : 1.93 Å(reported)

This is a Full wwPDB X-ray Structure Validation Report for a publicly released PDB entry.

We welcome your comments at validation@mail.wwpdb.org

A user guide is available at

<https://www.wwpdb.org/validation/2017/XrayValidationReportHelp>

with specific help available everywhere you see the ⓘ symbol.

The types of validation reports are described at <http://www.wwpdb.org/validation/2017/FAQs#types>.

The following versions of software and data (see [references ⓘ](#)) were used in the production of this report:

MolProbity	:	4.02b-467
Mogul	:	1.8.5 (274361), CSD as541be (2020)
Xtriage (Phenix)	:	1.13
EDS	:	2.29
buster-report	:	1.1.7 (2018)
Percentile statistics	:	20191225.v01 (using entries in the PDB archive December 25th 2019)
Refmac	:	5.8.0158
CCP4	:	7.0.044 (Gargrove)
Ideal geometry (proteins)	:	Engh & Huber (2001)
Ideal geometry (DNA, RNA)	:	Parkinson et al. (1996)
Validation Pipeline (wwPDB-VP)	:	2.29

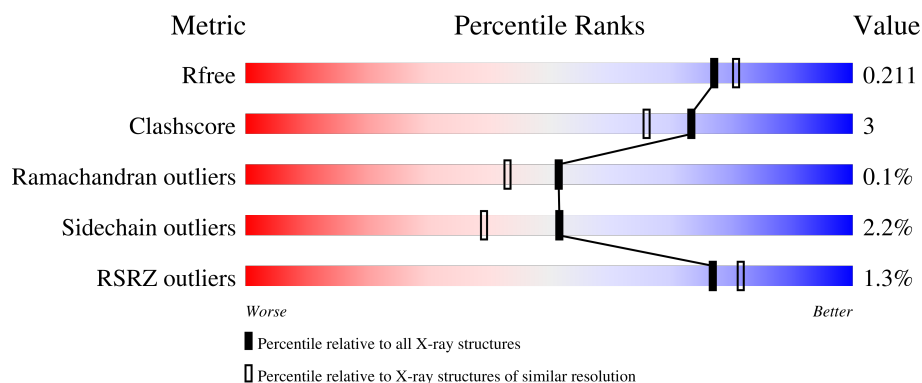
1 Overall quality at a glance

The following experimental techniques were used to determine the structure:

X-RAY DIFFRACTION

The reported resolution of this entry is 1.93 Å.

Percentile scores (ranging between 0-100) for global validation metrics of the entry are shown in the following graphic. The table shows the number of entries on which the scores are based.



Metric	Whole archive (#Entries)	Similar resolution (#Entries, resolution range(Å))
R_{free}	130704	4310 (1.96-1.92)
Clashscore	141614	1023 (1.94-1.94)
Ramachandran outliers	138981	1007 (1.94-1.94)
Sidechain outliers	138945	1007 (1.94-1.94)
RSRZ outliers	127900	4250 (1.96-1.92)

The table below summarises the geometric issues observed across the polymeric chains and their fit to the electron density. The red, orange, yellow and green segments of the lower bar indicate the fraction of residues that contain outliers for ≥ 3 , 2, 1 and 0 types of geometric quality criteria respectively. A grey segment represents the fraction of residues that are not modelled. The numeric value for each fraction is indicated below the corresponding segment, with a dot representing fractions $\leq 5\%$. The upper red bar (where present) indicates the fraction of residues that have poor fit to the electron density. The numeric value is given above the bar.

Mol	Chain	Length	Quality of chain
1	A	423	<div> <div>0%</div> <div> <div></div> <div>89%</div> <div>9%</div> <div>.</div> </div> </div>
1	B	423	<div> <div>0%</div> <div> <div></div> <div>91%</div> <div>6%</div> <div>..</div> </div> </div>
1	C	423	<div> <div>2%</div> <div> <div></div> <div>89%</div> <div>8%</div> <div>..</div> </div> </div>
1	D	423	<div> <div>0%</div> <div> <div></div> <div>87%</div> <div>12%</div> <div>.</div> </div> </div>

2 Entry composition

There are 7 unique types of molecules in this entry. The entry contains 15197 atoms, of which 0 are hydrogens and 0 are deuteriums.

In the tables below, the ZeroOcc column contains the number of atoms modelled with zero occupancy, the AltConf column contains the number of residues with at least one atom in alternate conformation and the Trace column contains the number of residues modelled with at most 2 atoms.

- Molecule 1 is a protein called Nitric oxide synthase, brain.

Mol	Chain	Residues	Atoms					ZeroOcc	AltConf	Trace
1	A	418	Total	C	N	O	S	0	4	0
			3420	2188	585	625	22			
1	B	414	Total	C	N	O	S	0	2	0
			3379	2165	575	618	21			
1	C	413	Total	C	N	O	S	0	5	0
			3384	2169	575	618	22			
1	D	418	Total	C	N	O	S	0	3	0
			3420	2188	585	626	21			

There are 16 discrepancies between the modelled and reference sequences:

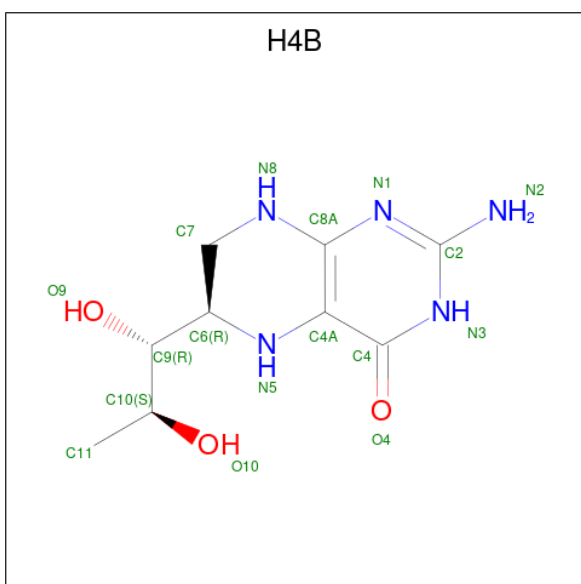
Chain	Residue	Modelled	Actual	Comment	Reference
A	354	ALA	ARG	engineered mutation	UNP P29475
A	357	ASP	GLY	engineered mutation	UNP P29475
A	723	LEU	-	expression tag	UNP P29475
A	724	VAL	-	expression tag	UNP P29475
B	354	ALA	ARG	engineered mutation	UNP P29475
B	357	ASP	GLY	engineered mutation	UNP P29475
B	723	LEU	-	expression tag	UNP P29475
B	724	VAL	-	expression tag	UNP P29475
C	354	ALA	ARG	engineered mutation	UNP P29475
C	357	ASP	GLY	engineered mutation	UNP P29475
C	723	LEU	-	expression tag	UNP P29475
C	724	VAL	-	expression tag	UNP P29475
D	354	ALA	ARG	engineered mutation	UNP P29475
D	357	ASP	GLY	engineered mutation	UNP P29475
D	723	LEU	-	expression tag	UNP P29475
D	724	VAL	-	expression tag	UNP P29475

- Molecule 2 is PROTOPORPHYRIN IX CONTAINING FE (three-letter code: HEM) (formula: $C_{34}H_{32}FeN_4O_4$).



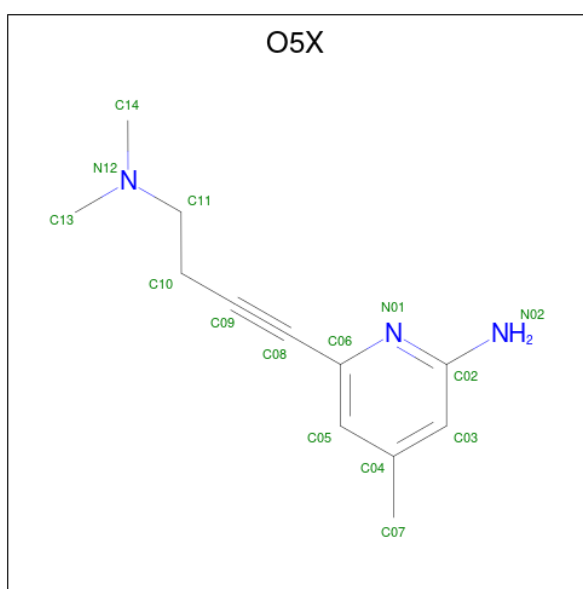
Mol	Chain	Residues	Atoms					ZeroOcc	AltConf
2	A	1	Total 43	C 34	Fe 1	N 4	O 4	0	0
2	B	1	Total 43	C 34	Fe 1	N 4	O 4	0	0
2	C	1	Total 43	C 34	Fe 1	N 4	O 4	0	0
2	D	1	Total 43	C 34	Fe 1	N 4	O 4	0	0

- Molecule 3 is 5,6,7,8-TETRAHYDROBIOPTERIN (three-letter code: H4B) (formula: $\text{C}_9\text{H}_{15}\text{N}_5\text{O}_3$).



Mol	Chain	Residues	Atoms	ZeroOcc	AltConf
3	A	1	Total C N O 17 9 5 3	0	0
3	B	1	Total C N O 17 9 5 3	0	0
3	C	1	Total C N O 17 9 5 3	0	0
3	D	1	Total C N O 17 9 5 3	0	0

- Molecule 4 is 6-[4-(dimethylamino)but-1-yn-1-yl]-4-methylpyridin-2-amine (three-letter code: O5X) (formula: C₁₂H₁₇N₃) (labeled as "Ligand of Interest" by depositor).



Mol	Chain	Residues	Atoms	ZeroOcc	AltConf
4	A	1	Total C N 15 12 3	0	0
4	B	1	Total C N 15 12 3	0	0
4	C	1	Total C N 15 12 3	0	0
4	D	1	Total C N 15 12 3	0	0

- Molecule 5 is GLYCEROL (three-letter code: GOL) (formula: C₃H₈O₃).



Mol	Chain	Residues	Atoms			ZeroOcc	AltConf
5	A	1	Total	C	O	0	0
			6	3	3		
5	A	1	Total	C	O	0	0
			6	3	3		
5	B	1	Total	C	O	0	0
			6	3	3		
5	C	1	Total	C	O	0	0
			6	3	3		
5	C	1	Total	C	O	0	0
			6	3	3		
5	C	1	Total	C	O	0	0
			6	3	3		
5	D	1	Total	C	O	0	0
			6	3	3		

- Molecule 6 is ZINC ION (three-letter code: ZN) (formula: Zn).

Mol	Chain	Residues	Atoms		ZeroOcc	AltConf
6	A	1	Total	Zn	0	0
			1	1		
6	C	1	Total	Zn	0	0
			1	1		

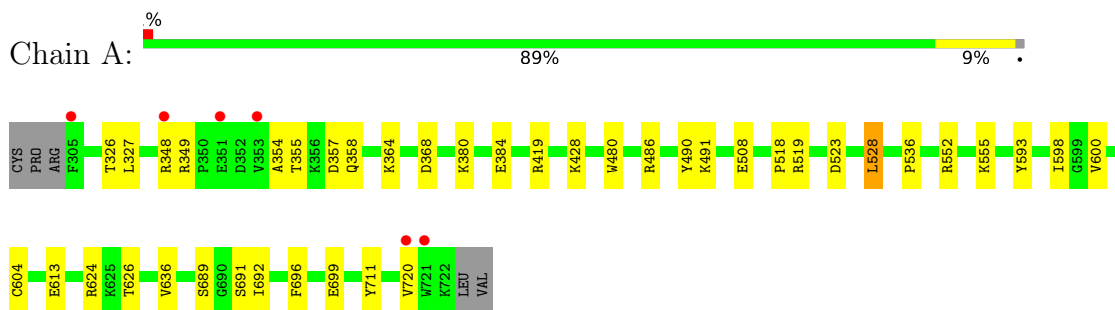
- Molecule 7 is water.

Mol	Chain	Residues	Atoms		ZeroOcc	AltConf
7	A	296	Total 296	O 296	0	0
7	B	326	Total 326	O 326	0	0
7	C	338	Total 338	O 338	0	0
7	D	290	Total 290	O 290	0	0

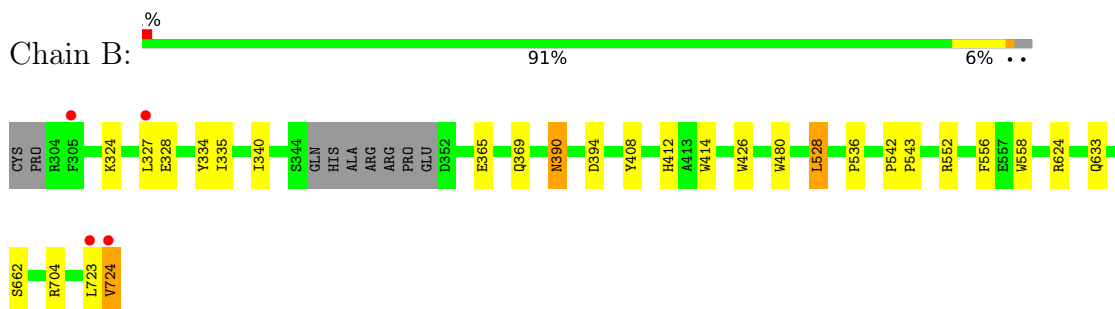
3 Residue-property plots [i](#)

These plots are drawn for all protein, RNA, DNA and oligosaccharide chains in the entry. The first graphic for a chain summarises the proportions of the various outlier classes displayed in the second graphic. The second graphic shows the sequence view annotated by issues in geometry and electron density. Residues are color-coded according to the number of geometric quality criteria for which they contain at least one outlier: green = 0, yellow = 1, orange = 2 and red = 3 or more. A red dot above a residue indicates a poor fit to the electron density ($RSRZ > 2$). Stretches of 2 or more consecutive residues without any outlier are shown as a green connector. Residues present in the sample, but not in the model, are shown in grey.

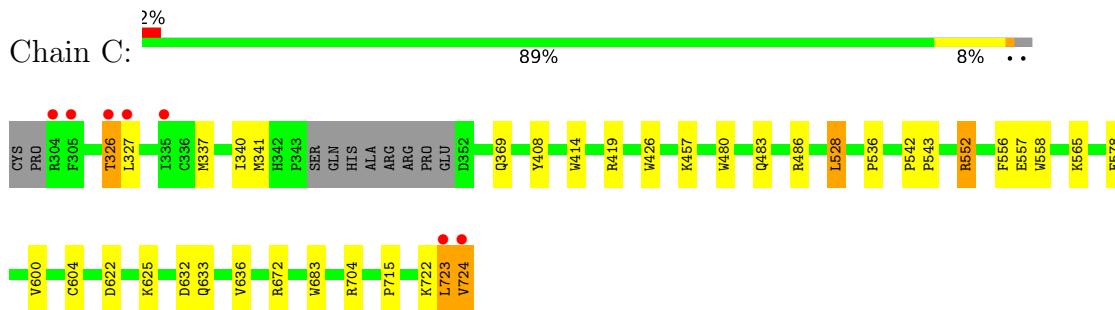
- Molecule 1: Nitric oxide synthase, brain



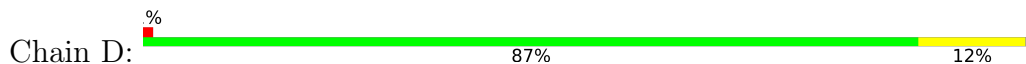
- Molecule 1: Nitric oxide synthase, brain

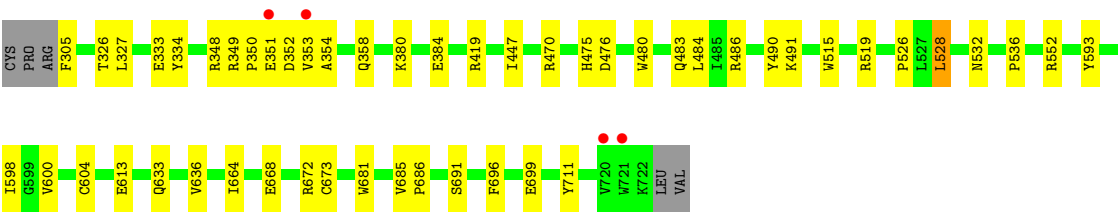


- Molecule 1: Nitric oxide synthase, brain



- Molecule 1: Nitric oxide synthase, brain





4 Data and refinement statistics

Property	Value	Source
Space group	P 1 21 1	Depositor
Cell constants a, b, c, α , β , γ	52.38Å 117.78Å 165.30Å 90.00° 90.00° 90.00°	Depositor
Resolution (Å)	39.14 – 1.93 39.14 – 1.93	Depositor EDS
% Data completeness (in resolution range)	98.0 (39.14-1.93) 98.5 (39.14-1.93)	Depositor EDS
R_{merge}	0.10	Depositor
R_{sym}	(Not available)	Depositor
$\langle I/\sigma(I) \rangle$ ¹	1.65 (at 1.94Å)	Xtriage
Refinement program	PHENIX 1.20.1_4487	Depositor
R, R_{free}	0.175 , 0.214 0.171 , 0.211	Depositor DCC
R_{free} test set	7459 reflections (5.04%)	wwPDB-VP
Wilson B-factor (Å ²)	31.9	Xtriage
Anisotropy	0.526	Xtriage
Bulk solvent k_{sol} (e/Å ³), B_{sol} (Å ²)	0.34 , 37.0	EDS
L-test for twinning ²	$\langle L \rangle = 0.50$, $\langle L^2 \rangle = 0.34$	Xtriage
Estimated twinning fraction	0.477 for h,-k,-l	Xtriage
F_o, F_c correlation	0.97	EDS
Total number of atoms	15197	wwPDB-VP
Average B, all atoms (Å ²)	39.0	wwPDB-VP

Xtriage's analysis on translational NCS is as follows: *The largest off-origin peak in the Patterson function is 4.15% of the height of the origin peak. No significant pseudotranslation is detected.*

¹Intensities estimated from amplitudes.

²Theoretical values of $\langle |L| \rangle$, $\langle L^2 \rangle$ for acentric reflections are 0.5, 0.333 respectively for untwinned datasets, and 0.375, 0.2 for perfectly twinned datasets.

5 Model quality [i](#)

5.1 Standard geometry [i](#)

Bond lengths and bond angles in the following residue types are not validated in this section: GOL, O5X, ZN, HEM, H4B

The Z score for a bond length (or angle) is the number of standard deviations the observed value is removed from the expected value. A bond length (or angle) with $|Z| > 5$ is considered an outlier worth inspection. RMSZ is the root-mean-square of all Z scores of the bond lengths (or angles).

Mol	Chain	Bond lengths		Bond angles	
		RMSZ	$\# Z > 5$	RMSZ	$\# Z > 5$
1	A	0.36	0/3530	0.55	0/4791
1	B	0.39	0/3480	0.57	0/4721
1	C	0.38	0/3494	0.56	0/4740
1	D	0.37	0/3527	0.54	0/4787
All	All	0.38	0/14031	0.56	0/19039

There are no bond length outliers.

There are no bond angle outliers.

There are no chirality outliers.

There are no planarity outliers.

5.2 Too-close contacts [i](#)

In the following table, the Non-H and H(model) columns list the number of non-hydrogen atoms and hydrogen atoms in the chain respectively. The H(added) column lists the number of hydrogen atoms added and optimized by MolProbity. The Clashes column lists the number of clashes within the asymmetric unit, whereas Symm-Clashes lists symmetry-related clashes.

Mol	Chain	Non-H	H(model)	H(added)	Clashes	Symm-Clashes
1	A	3420	0	3332	22	0
1	B	3379	0	3295	17	0
1	C	3384	0	3306	24	0
1	D	3420	0	3328	26	0
2	A	43	0	30	2	0
2	B	43	0	30	2	0
2	C	43	0	30	2	0
2	D	43	0	30	2	0
3	A	17	0	15	0	0

Continued on next page...

Continued from previous page...

Mol	Chain	Non-H	H(model)	H(added)	Clashes	Symm-Clashes
3	B	17	0	15	0	0
3	C	17	0	15	0	0
3	D	17	0	15	0	0
4	A	15	0	0	0	0
4	B	15	0	0	0	0
4	C	15	0	0	0	0
4	D	15	0	0	0	0
5	A	12	0	16	1	0
5	B	6	0	8	0	0
5	C	18	0	24	2	0
5	D	6	0	8	0	0
6	A	1	0	0	0	0
6	C	1	0	0	0	0
7	A	296	0	0	5	0
7	B	326	0	0	3	0
7	C	338	0	0	3	0
7	D	290	0	0	0	0
All	All	15197	0	13497	91	0

The all-atom clashscore is defined as the number of clashes found per 1000 atoms (including hydrogen atoms). The all-atom clashscore for this structure is 3.

All (91) close contacts within the same asymmetric unit are listed below, sorted by their clash magnitude.

Atom-1	Atom-2	Interatomic distance (Å)	Clash overlap (Å)
1:C:327:LEU:HB3	1:C:704:ARG:HD3	1.53	0.91
1:A:528:LEU:HD22	1:A:536:PRO:HB2	1.62	0.81
1:D:528:LEU:HD22	1:D:536:PRO:HB2	1.66	0.78
1:B:528:LEU:HD22	1:B:536:PRO:HB2	1.69	0.73
1:B:662[B]:SER:OG	7:B:901:HOH:O	2.04	0.73
2:A:801:HEM:HMC2	2:A:801:HEM:HBC2	1.71	0.72
1:D:327:LEU:HD21	1:D:348:ARG:HG3	1.72	0.72
1:C:578:GLU:OE2	7:C:901:HOH:O	2.06	0.72
1:C:528:LEU:HD22	1:C:536:PRO:HB2	1.72	0.71
1:A:624:ARG:NH2	7:A:901:HOH:O	2.22	0.71
2:D:801:HEM:HBC2	2:D:801:HEM:HMC2	1.74	0.69
1:D:664:ILE:O	1:D:668[B]:GLU:HG2	1.93	0.68
1:A:355:THR:HG21	5:A:806:GOL:H32	1.77	0.67
2:B:801:HEM:HMC2	2:B:801:HEM:HBC2	1.80	0.64
2:A:801:HEM:HBB2	2:A:801:HEM:HHC	1.80	0.64
1:B:390:ASN:ND2	7:B:904:HOH:O	2.30	0.61

Continued on next page...

Continued from previous page...

Atom-1	Atom-2	Interatomic distance (Å)	Clash overlap (Å)
1:B:624:ARG:NH1	7:B:906:HOH:O	2.32	0.61
2:C:801:HEM:HBC2	2:C:801:HEM:HMC2	1.83	0.60
1:A:419:ARG:NH1	1:A:711:TYR:OH	2.35	0.59
1:C:723:LEU:HD23	1:C:724:VAL:H	1.70	0.56
2:D:801:HEM:HBB2	2:D:801:HEM:HHC	1.88	0.56
1:C:552:ARG:HH21	5:C:804:GOL:H12	1.71	0.56
1:C:636:VAL:HG11	1:D:633:GLN:HG2	1.88	0.56
1:C:480:TRP:HB2	1:C:528:LEU:HB3	1.89	0.54
1:A:354:ALA:HB1	1:A:358:GLN:HB2	1.89	0.53
2:B:801:HEM:HBB2	2:B:801:HEM:HHC	1.90	0.53
1:B:480:TRP:HB2	1:B:528:LEU:HB3	1.90	0.53
1:D:668[A]:GLU:OE2	1:D:672:ARG:NH2	2.42	0.52
1:B:624:ARG:HB2	1:B:624:ARG:HH11	1.75	0.52
1:C:565:LYS:NZ	7:C:902:HOH:O	2.32	0.52
1:A:699:GLU:HB3	1:B:340:ILE:HD13	1.91	0.51
2:C:801:HEM:HHC	2:C:801:HEM:HBB2	1.92	0.51
1:A:518:PRO:HG2	1:A:523:ASP:CG	2.31	0.51
1:D:380:LYS:O	1:D:384:GLU:HG3	2.12	0.50
1:A:428:LYS:HE2	1:A:428:LYS:HB3	1.67	0.49
1:A:490:TYR:CE2	1:A:519:ARG:HA	2.48	0.49
1:B:327:LEU:HB3	1:B:704:ARG:HD3	1.94	0.49
1:C:633:GLN:HG3	1:D:636:VAL:HG11	1.95	0.49
1:C:556:PHE:HB3	1:C:558:TRP:CE2	2.47	0.49
1:D:483:GLN:HB2	1:D:486:ARG:HG3	1.95	0.49
1:C:340:ILE:HD13	1:D:699:GLU:HB3	1.95	0.48
1:B:723:LEU:HD12	1:B:724:VAL:H	1.78	0.48
1:C:722:LYS:NZ	7:C:913:HOH:O	2.47	0.47
1:D:333:GLU:HG3	1:D:334:TYR:CD2	2.49	0.47
1:A:555:LYS:NZ	7:A:904:HOH:O	2.33	0.46
1:C:480:TRP:CE2	1:C:715:PRO:HB2	2.51	0.46
1:D:480:TRP:HB2	1:D:528:LEU:HB3	1.98	0.46
1:A:364:LYS:NZ	1:A:368:ASP:OD2	2.48	0.46
1:C:552:ARG:HE	5:C:804:GOL:H2	1.79	0.46
1:C:414:TRP:CE3	1:C:426:TRP:HA	2.51	0.46
1:D:419:ARG:NH1	1:D:711:TYR:OH	2.49	0.46
1:D:600:VAL:O	1:D:604:CYS:HB2	2.17	0.45
1:A:357:ASP:HB3	1:D:673:CYS:O	2.16	0.45
1:B:414:TRP:CE3	1:B:426:TRP:HA	2.52	0.45
1:A:689:SER:HB3	1:A:692:ILE:HD11	1.98	0.45
7:A:907:HOH:O	1:B:633:GLN:NE2	2.42	0.45
1:A:380:LYS:O	1:A:384:GLU:HG3	2.16	0.45

Continued on next page...

Continued from previous page...

Atom-1	Atom-2	Interatomic distance (Å)	Clash overlap (Å)
1:B:556:PHE:HB3	1:B:558:TRP:CE2	2.51	0.44
1:C:369:GLN:HG2	1:C:408:TYR:OH	2.17	0.44
1:A:600:VAL:O	1:A:604:CYS:HB2	2.18	0.44
1:D:593:TYR:CD2	1:D:598:ILE:HD11	2.53	0.43
1:D:681:TRP:CE2	1:D:685:VAL:HG21	2.53	0.43
1:D:668[B]:GLU:HG2	1:D:668[B]:GLU:H	1.70	0.43
1:D:691:SER:HA	1:D:696:PHE:CG	2.54	0.43
1:B:408:TYR:CE2	1:B:412:HIS:CE1	3.07	0.43
1:C:542:PRO:HA	1:C:543:PRO:HD3	1.93	0.43
1:A:327:LEU:HD11	1:A:348:ARG:HG3	1.99	0.43
1:A:480:TRP:HB2	1:A:528:LEU:HB3	2.00	0.43
1:C:419:ARG:HD3	1:C:683:TRP:CD2	2.54	0.43
1:C:723:LEU:HD23	1:C:724:VAL:N	2.33	0.43
1:B:327:LEU:HG	1:B:328:GLU:H	1.84	0.42
1:C:622:ASP:OD2	1:C:625:LYS:HE3	2.19	0.42
1:C:337:MET:HB3	1:C:340:ILE:HG13	2.02	0.42
1:D:354:ALA:HB1	1:D:358:GLN:HB2	2.01	0.42
1:B:542:PRO:HA	1:B:543:PRO:HD3	1.93	0.42
1:C:483:GLN:HB2	1:C:486:ARG:HG3	2.00	0.42
1:D:470:ARG:NH2	1:D:476:ASP:OD2	2.51	0.42
1:A:508:GLU:HG3	7:A:1026:HOH:O	2.20	0.42
1:A:691:SER:HA	1:A:696:PHE:CG	2.55	0.42
1:D:475:HIS:HB3	1:D:532:ASN:OD1	2.20	0.42
1:D:490:TYR:CE2	1:D:519:ARG:HA	2.54	0.42
1:D:352:ASP:HB3	1:D:353:VAL:H	1.58	0.41
1:D:685:VAL:HA	1:D:686:PRO:HD3	1.95	0.41
1:C:326:THR:OG1	1:C:327:LEU:N	2.51	0.41
1:A:593:TYR:CD2	1:A:598:ILE:HD11	2.56	0.41
1:D:515:TRP:CE2	1:D:526:PRO:HD3	2.55	0.41
1:C:600:VAL:O	1:C:604:CYS:HB2	2.20	0.41
1:A:626:THR:HG22	7:A:1164:HOH:O	2.21	0.41
1:A:636:VAL:HG11	1:B:633:GLN:HG3	2.03	0.41
1:D:447:ILE:HG23	1:D:484:LEU:HD13	2.03	0.41
1:B:334:TYR:C	1:B:335:ILE:HG13	2.41	0.40

There are no symmetry-related clashes.

5.3 Torsion angles [i](#)

5.3.1 Protein backbone [i](#)

In the following table, the Percentiles column shows the percent Ramachandran outliers of the chain as a percentile score with respect to all X-ray entries followed by that with respect to entries of similar resolution.

The Analysed column shows the number of residues for which the backbone conformation was analysed, and the total number of residues.

Mol	Chain	Analysed	Favoured	Allowed	Outliers	Percentiles	
1	A	420/423 (99%)	411 (98%)	9 (2%)	0	100	100
1	B	412/423 (97%)	405 (98%)	7 (2%)	0	100	100
1	C	414/423 (98%)	409 (99%)	5 (1%)	0	100	100
1	D	419/423 (99%)	408 (97%)	9 (2%)	2 (0%)	29	17
All	All	1665/1692 (98%)	1633 (98%)	30 (2%)	2 (0%)	51	43

All (2) Ramachandran outliers are listed below:

Mol	Chain	Res	Type
1	D	351	GLU
1	D	350	PRO

5.3.2 Protein sidechains [i](#)

In the following table, the Percentiles column shows the percent sidechain outliers of the chain as a percentile score with respect to all X-ray entries followed by that with respect to entries of similar resolution.

The Analysed column shows the number of residues for which the sidechain conformation was analysed, and the total number of residues.

Mol	Chain	Analysed	Rotameric	Outliers	Percentiles	
1	A	377/378 (100%)	369 (98%)	8 (2%)	53	41
1	B	372/378 (98%)	364 (98%)	8 (2%)	52	39
1	C	374/378 (99%)	364 (97%)	10 (3%)	44	31
1	D	376/378 (100%)	369 (98%)	7 (2%)	57	45
All	All	1499/1512 (99%)	1466 (98%)	33 (2%)	52	39

All (33) residues with a non-rotameric sidechain are listed below:

Mol	Chain	Res	Type
1	A	326	THR
1	A	349	ARG
1	A	486	ARG
1	A	491	LYS
1	A	528	LEU
1	A	552	ARG
1	A	613	GLU
1	A	720	VAL
1	B	324	LYS
1	B	365	GLU
1	B	369	GLN
1	B	390	ASN
1	B	394	ASP
1	B	528	LEU
1	B	552	ARG
1	B	724	VAL
1	C	326	THR
1	C	341	MET
1	C	457	LYS
1	C	528	LEU
1	C	552	ARG
1	C	557	GLU
1	C	632	ASP
1	C	672	ARG
1	C	723	LEU
1	C	724	VAL
1	D	305	PHE
1	D	326	THR
1	D	349	ARG
1	D	491	LYS
1	D	528	LEU
1	D	552	ARG
1	D	613	GLU

Sometimes sidechains can be flipped to improve hydrogen bonding and reduce clashes. All (1) such sidechains are listed below:

Mol	Chain	Res	Type
1	A	513	GLN

5.3.3 RNA ⓘ

There are no RNA molecules in this entry.

5.4 Non-standard residues in protein, DNA, RNA chains [i](#)

There are no non-standard protein/DNA/RNA residues in this entry.

5.5 Carbohydrates [i](#)

There are no monosaccharides in this entry.

5.6 Ligand geometry [i](#)

Of 21 ligands modelled in this entry, 2 are monoatomic - leaving 19 for Mogul analysis.

In the following table, the Counts columns list the number of bonds (or angles) for which Mogul statistics could be retrieved, the number of bonds (or angles) that are observed in the model and the number of bonds (or angles) that are defined in the Chemical Component Dictionary. The Link column lists molecule types, if any, to which the group is linked. The Z score for a bond length (or angle) is the number of standard deviations the observed value is removed from the expected value. A bond length (or angle) with $|Z| > 2$ is considered an outlier worth inspection. RMSZ is the root-mean-square of all Z scores of the bond lengths (or angles).

Mol	Type	Chain	Res	Link	Bond lengths			Bond angles		
					Counts	RMSZ	# $ Z > 2$	Counts	RMSZ	# $ Z > 2$
5	GOL	A	806	-	5,5,5	0.97	0	5,5,5	0.98	0
2	HEM	A	801	1	41,50,50	1.54	6 (14%)	45,82,82	1.77	6 (13%)
5	GOL	A	804	-	5,5,5	0.79	0	5,5,5	1.24	1 (20%)
4	O5X	B	803	-	15,15,15	2.45	1 (6%)	19,19,19	1.62	3 (15%)
4	O5X	D	803	-	15,15,15	2.34	1 (6%)	19,19,19	1.46	4 (21%)
2	HEM	B	801	1	41,50,50	1.48	4 (9%)	45,82,82	1.61	6 (13%)
5	GOL	C	804	-	5,5,5	1.06	0	5,5,5	1.01	0
2	HEM	D	801	1	41,50,50	1.55	6 (14%)	45,82,82	1.72	8 (17%)
3	H4B	A	802	-	16,18,18	0.89	0	11,26,26	2.48	6 (54%)
3	H4B	B	802	-	16,18,18	1.04	1 (6%)	11,26,26	2.61	4 (36%)
5	GOL	C	805	-	5,5,5	0.93	0	5,5,5	1.12	0
5	GOL	D	804	-	5,5,5	0.84	0	5,5,5	0.95	0
3	H4B	D	802	-	16,18,18	1.07	1 (6%)	11,26,26	2.63	5 (45%)
4	O5X	C	803	-	15,15,15	2.30	1 (6%)	19,19,19	1.69	5 (26%)
5	GOL	B	804	-	5,5,5	1.09	0	5,5,5	0.88	0
3	H4B	C	802	-	16,18,18	0.93	1 (6%)	11,26,26	2.54	4 (36%)
5	GOL	C	806	-	5,5,5	0.94	0	5,5,5	0.88	0
4	O5X	A	803	-	15,15,15	2.27	1 (6%)	19,19,19	1.69	5 (26%)
2	HEM	C	801	1	41,50,50	1.52	4 (9%)	45,82,82	1.67	9 (20%)

In the following table, the Chirals column lists the number of chiral outliers, the number of chiral centers analysed, the number of these observed in the model and the number defined in the Chemical Component Dictionary. Similar counts are reported in the Torsion and Rings columns. '-' means no outliers of that kind were identified.

Mol	Type	Chain	Res	Link	Chirals	Torsions	Rings
5	GOL	A	806	-	-	2/4/4/4	-
2	HEM	A	801	1	-	1/12/54/54	-
5	GOL	A	804	-	-	2/4/4/4	-
4	O5X	B	803	-	-	2/6/7/7	0/1/1/1
4	O5X	D	803	-	-	3/6/7/7	0/1/1/1
2	HEM	B	801	1	-	2/12/54/54	-
5	GOL	C	804	-	-	2/4/4/4	-
2	HEM	D	801	1	-	0/12/54/54	-
3	H4B	A	802	-	-	0/8/17/17	0/2/2/2
3	H4B	B	802	-	-	0/8/17/17	0/2/2/2
5	GOL	C	805	-	-	1/4/4/4	-
5	GOL	D	804	-	-	3/4/4/4	-
3	H4B	D	802	-	-	0/8/17/17	0/2/2/2
4	O5X	C	803	-	-	2/6/7/7	0/1/1/1
5	GOL	B	804	-	-	2/4/4/4	-
3	H4B	C	802	-	-	0/8/17/17	0/2/2/2
5	GOL	C	806	-	-	0/4/4/4	-
4	O5X	A	803	-	-	1/6/7/7	0/1/1/1
2	HEM	C	801	1	-	2/12/54/54	-

All (27) bond length outliers are listed below:

Mol	Chain	Res	Type	Atoms	Z	Observed(Å)	Ideal(Å)
4	B	803	O5X	C06-C08	-9.30	1.29	1.44
4	D	803	O5X	C06-C08	-8.91	1.29	1.44
4	C	803	O5X	C06-C08	-8.80	1.29	1.44
4	A	803	O5X	C06-C08	-8.61	1.30	1.44
2	D	801	HEM	C3C-CAC	4.13	1.56	1.47
2	C	801	HEM	C3C-CAC	4.01	1.56	1.47
2	A	801	HEM	C3C-CAC	3.91	1.55	1.47
2	B	801	HEM	C3C-C2C	-3.83	1.35	1.40
2	C	801	HEM	C3C-C2C	-3.79	1.35	1.40
2	B	801	HEM	C3C-CAC	3.72	1.55	1.47
2	D	801	HEM	C3C-C2C	-3.49	1.35	1.40
2	A	801	HEM	C3C-C2C	-3.41	1.35	1.40
2	A	801	HEM	CAB-C3B	3.41	1.56	1.47

Continued on next page...

Continued from previous page...

Mol	Chain	Res	Type	Atoms	Z	Observed(Å)	Ideal(Å)
2	B	801	HEM	CAB-C3B	3.14	1.56	1.47
3	B	802	H4B	C4A-C4	-3.05	1.37	1.41
2	C	801	HEM	CAB-C3B	3.04	1.55	1.47
2	D	801	HEM	CAB-C3B	2.96	1.55	1.47
2	B	801	HEM	FE-NB	2.66	2.10	1.96
2	D	801	HEM	FE-NB	2.62	2.09	1.96
2	C	801	HEM	FE-NB	2.35	2.08	1.96
2	A	801	HEM	CAA-C2A	2.29	1.55	1.52
3	C	802	H4B	C4A-C4	-2.21	1.38	1.41
2	D	801	HEM	CMD-C2D	2.21	1.55	1.50
2	D	801	HEM	CMC-C2C	2.19	1.56	1.51
3	D	802	H4B	C4A-C4	-2.10	1.38	1.41
2	A	801	HEM	C3B-C2B	-2.04	1.33	1.37
2	A	801	HEM	CMB-C2B	2.02	1.55	1.50

All (66) bond angle outliers are listed below:

Mol	Chain	Res	Type	Atoms	Z	Observed(°)	Ideal(°)
2	A	801	HEM	CBA-CAA-C2A	-5.83	102.66	112.62
3	B	802	H4B	C8A-C4A-C4	5.75	119.67	114.57
3	C	802	H4B	C8A-C4A-C4	5.73	119.66	114.57
2	B	801	HEM	CBA-CAA-C2A	-5.69	102.91	112.62
2	D	801	HEM	CBA-CAA-C2A	-5.55	103.14	112.62
2	C	801	HEM	CBA-CAA-C2A	-5.39	103.42	112.62
3	D	802	H4B	C8A-C4A-C4	4.67	118.72	114.57
2	A	801	HEM	C4B-CHC-C1C	4.64	128.69	122.56
3	A	802	H4B	C8A-C4A-C4	4.55	118.61	114.57
2	D	801	HEM	C4B-CHC-C1C	4.34	128.28	122.56
4	A	803	O5X	C08-C06-N01	4.13	123.23	116.55
4	C	803	O5X	C08-C06-N01	4.13	123.22	116.55
3	B	802	H4B	C2-N3-C4	3.97	122.23	115.93
3	D	802	H4B	C2-N3-C4	3.82	122.00	115.93
3	D	802	H4B	N1-C2-N3	-3.77	119.51	125.42
4	B	803	O5X	C05-C06-N01	-3.67	119.85	123.61
3	A	802	H4B	C2-N3-C4	3.61	121.67	115.93
2	C	801	HEM	C4B-CHC-C1C	3.56	127.25	122.56
3	C	802	H4B	C2-N3-C4	3.48	121.45	115.93
4	B	803	O5X	C08-C06-N01	3.41	122.06	116.55
4	D	803	O5X	C08-C06-N01	3.34	121.95	116.55
3	A	802	H4B	N1-C2-N3	-3.30	120.24	125.42
4	A	803	O5X	C05-C06-C08	-3.24	116.36	119.83
4	C	803	O5X	C05-C06-C08	-3.20	116.40	119.83

Continued on next page...

Continued from previous page...

Mol	Chain	Res	Type	Atoms	Z	Observed(°)	Ideal(°)
4	C	803	O5X	C05-C06-N01	-3.16	120.37	123.61
4	A	803	O5X	C05-C06-N01	-3.15	120.38	123.61
2	A	801	HEM	C4D-ND-C1D	3.06	108.23	105.07
2	A	801	HEM	C3B-C2B-C1B	3.04	108.74	106.49
3	B	802	H4B	N1-C2-N3	-2.97	120.76	125.42
4	D	803	O5X	C05-C06-N01	-2.96	120.58	123.61
2	B	801	HEM	CMA-C3A-C4A	-2.94	123.94	128.46
3	D	802	H4B	N2-C2-N1	2.89	121.75	117.25
2	D	801	HEM	C3B-C2B-C1B	2.82	108.58	106.49
3	C	802	H4B	N1-C2-N3	-2.82	121.00	125.42
2	C	801	HEM	C4D-ND-C1D	2.75	107.92	105.07
2	D	801	HEM	C4D-ND-C1D	2.75	107.92	105.07
2	B	801	HEM	C4B-CHC-C1C	2.72	126.15	122.56
2	D	801	HEM	CMA-C3A-C4A	-2.72	124.29	128.46
3	D	802	H4B	C2-N1-C8A	2.69	120.58	114.54
2	B	801	HEM	C4D-ND-C1D	2.69	107.85	105.07
2	D	801	HEM	C1B-NB-C4B	2.65	107.81	105.07
4	B	803	O5X	C06-C05-C04	2.63	121.17	119.08
2	A	801	HEM	C1B-NB-C4B	2.47	107.63	105.07
4	A	803	O5X	C06-N01-C02	2.37	120.76	116.90
3	A	802	H4B	C2-N1-C8A	2.37	119.85	114.54
2	A	801	HEM	C3D-C4D-ND	-2.37	107.53	110.17
4	D	803	O5X	C06-N01-C02	2.36	120.74	116.90
3	A	802	H4B	N2-C2-N1	2.36	120.92	117.25
4	A	803	O5X	N02-C02-N01	2.36	120.21	116.49
2	C	801	HEM	C3B-C2B-C1B	2.32	108.21	106.49
2	C	801	HEM	C1B-NB-C4B	2.31	107.45	105.07
2	C	801	HEM	C3D-C4D-ND	-2.29	107.61	110.17
2	B	801	HEM	C3B-C2B-C1B	2.27	108.17	106.49
2	C	801	HEM	CMA-C3A-C4A	-2.22	125.05	128.46
4	D	803	O5X	C05-C06-C08	-2.20	117.47	119.83
4	C	803	O5X	C06-N01-C02	2.19	120.47	116.90
3	B	802	H4B	C4A-C4-N3	-2.19	117.78	124.01
5	A	804	GOL	C3-C2-C1	-2.19	103.20	111.70
2	D	801	HEM	C3D-C4D-ND	-2.15	107.77	110.17
2	C	801	HEM	O1A-CGA-CBA	-2.15	116.17	123.08
2	D	801	HEM	CHC-C4B-C3B	2.15	127.86	124.57
2	B	801	HEM	C3D-C4D-ND	-2.13	107.79	110.17
3	A	802	H4B	C4-C4A-N5	2.12	120.90	119.12
2	C	801	HEM	O2D-CGD-CBD	2.04	120.59	114.03
4	C	803	O5X	C06-C05-C04	2.02	120.69	119.08
3	C	802	H4B	C4A-N5-C6	-2.02	115.66	121.16

There are no chirality outliers.

All (25) torsion outliers are listed below:

Mol	Chain	Res	Type	Atoms
4	D	803	O5X	C05-C06-C08-C09
5	A	806	GOL	O1-C1-C2-C3
5	B	804	GOL	O1-C1-C2-C3
4	A	803	O5X	C10-C11-N12-C13
4	C	803	O5X	C10-C11-N12-C13
5	A	804	GOL	O1-C1-C2-C3
5	D	804	GOL	O1-C1-C2-C3
4	D	803	O5X	C10-C11-N12-C13
2	A	801	HEM	C4B-C3B-CAB-CBB
5	A	806	GOL	O1-C1-C2-O2
5	B	804	GOL	O1-C1-C2-O2
5	C	805	GOL	O2-C2-C3-O3
5	C	804	GOL	O1-C1-C2-O2
5	D	804	GOL	C1-C2-C3-O3
4	B	803	O5X	C08-C09-C10-C11
4	C	803	O5X	C08-C09-C10-C11
5	A	804	GOL	O1-C1-C2-O2
5	D	804	GOL	O2-C2-C3-O3
5	C	804	GOL	O1-C1-C2-C3
4	B	803	O5X	N01-C06-C08-C09
4	D	803	O5X	N01-C06-C08-C09
2	C	801	HEM	CAD-CBD-CGD-O2D
2	B	801	HEM	CAD-CBD-CGD-O2D
2	B	801	HEM	CAD-CBD-CGD-O1D
2	C	801	HEM	CAD-CBD-CGD-O1D

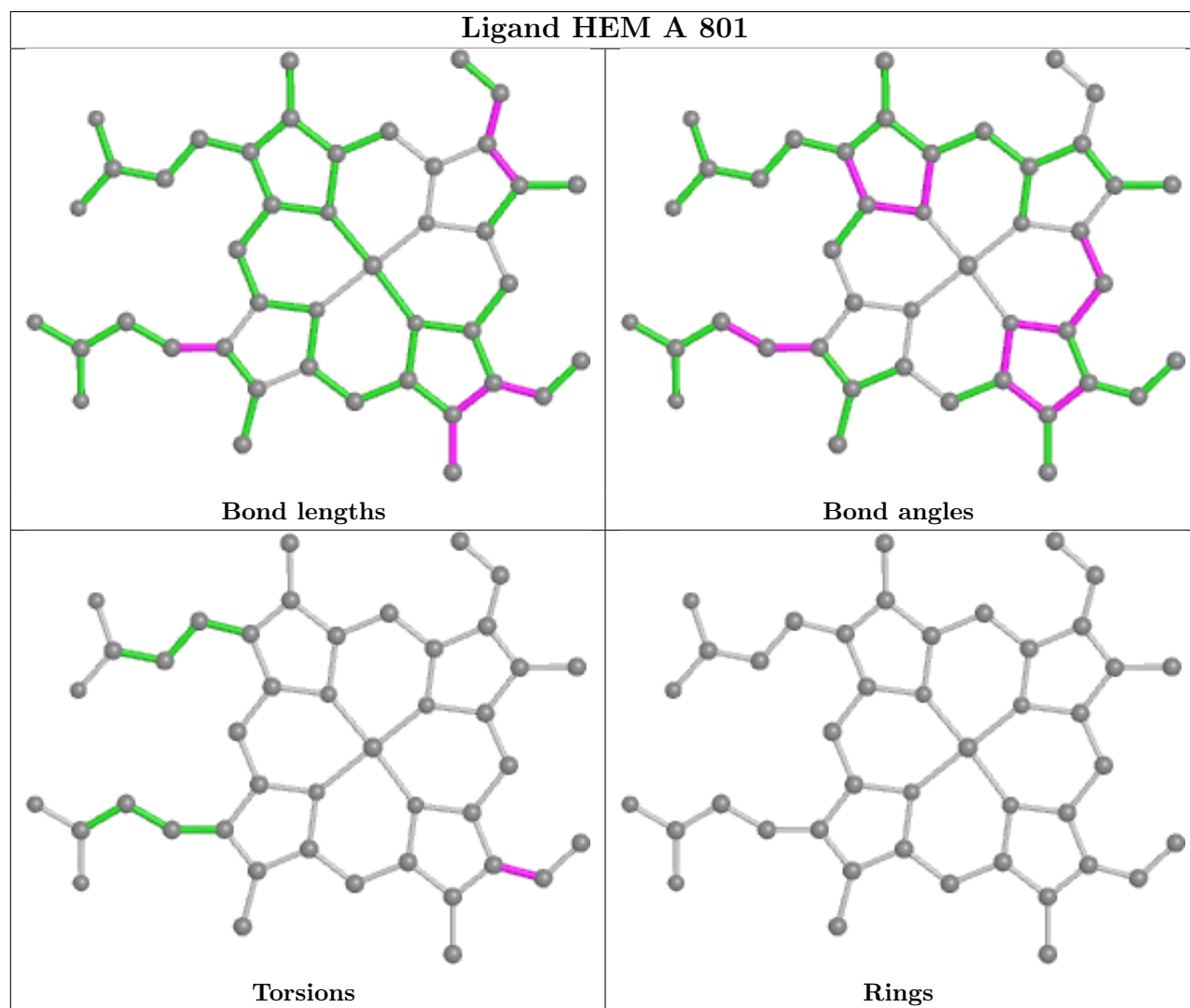
There are no ring outliers.

6 monomers are involved in 11 short contacts:

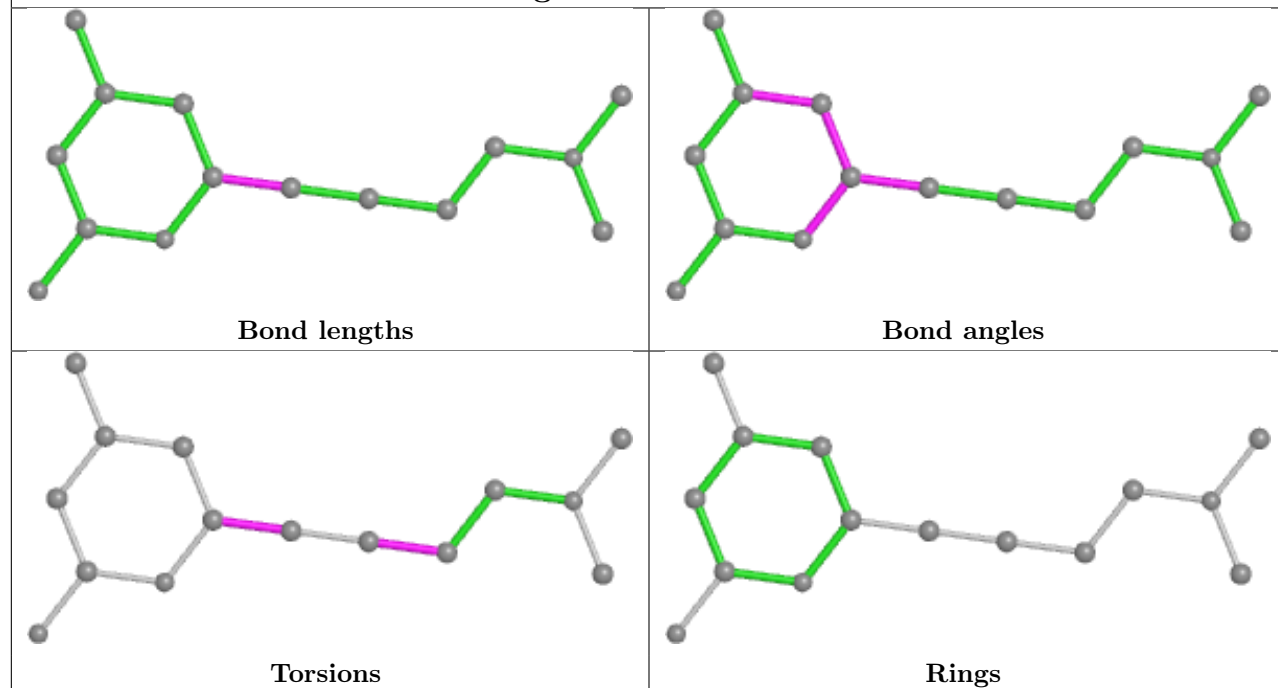
Mol	Chain	Res	Type	Clashes	Symm-Clashes
5	A	806	GOL	1	0
2	A	801	HEM	2	0
2	B	801	HEM	2	0
5	C	804	GOL	2	0
2	D	801	HEM	2	0
2	C	801	HEM	2	0

The following is a two-dimensional graphical depiction of Mogul quality analysis of bond lengths, bond angles, torsion angles, and ring geometry for all instances of the Ligand of Interest. In addition, ligands with molecular weight > 250 and outliers as shown on the validation Tables will

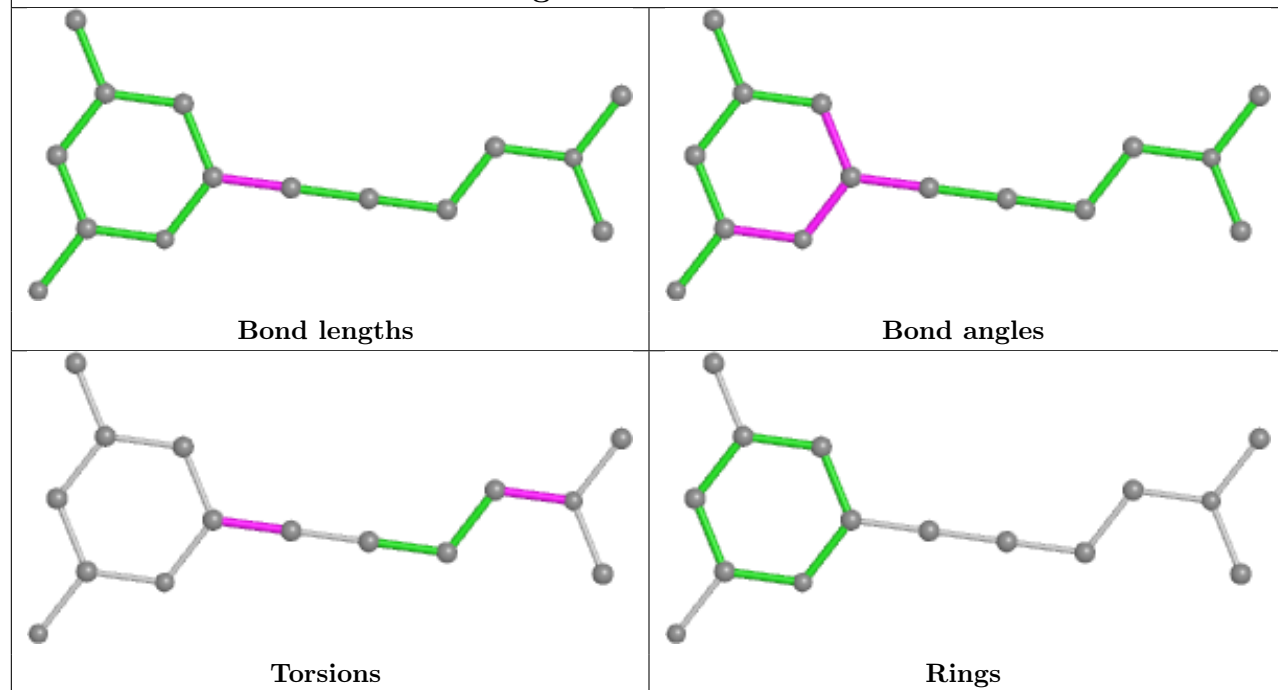
also be included. For torsion angles, if less than 5% of the Mogul distribution of torsion angles is within 10 degrees of the torsion angle in question, then that torsion angle is considered an outlier. Any bond that is central to one or more torsion angles identified as an outlier by Mogul will be highlighted in the graph. For rings, the root-mean-square deviation (RMSD) between the ring in question and similar rings identified by Mogul is calculated over all ring torsion angles. If the average RMSD is greater than 60 degrees and the minimal RMSD between the ring in question and any Mogul-identified rings is also greater than 60 degrees, then that ring is considered an outlier. The outliers are highlighted in purple. The color gray indicates Mogul did not find sufficient equivalents in the CSD to analyse the geometry.

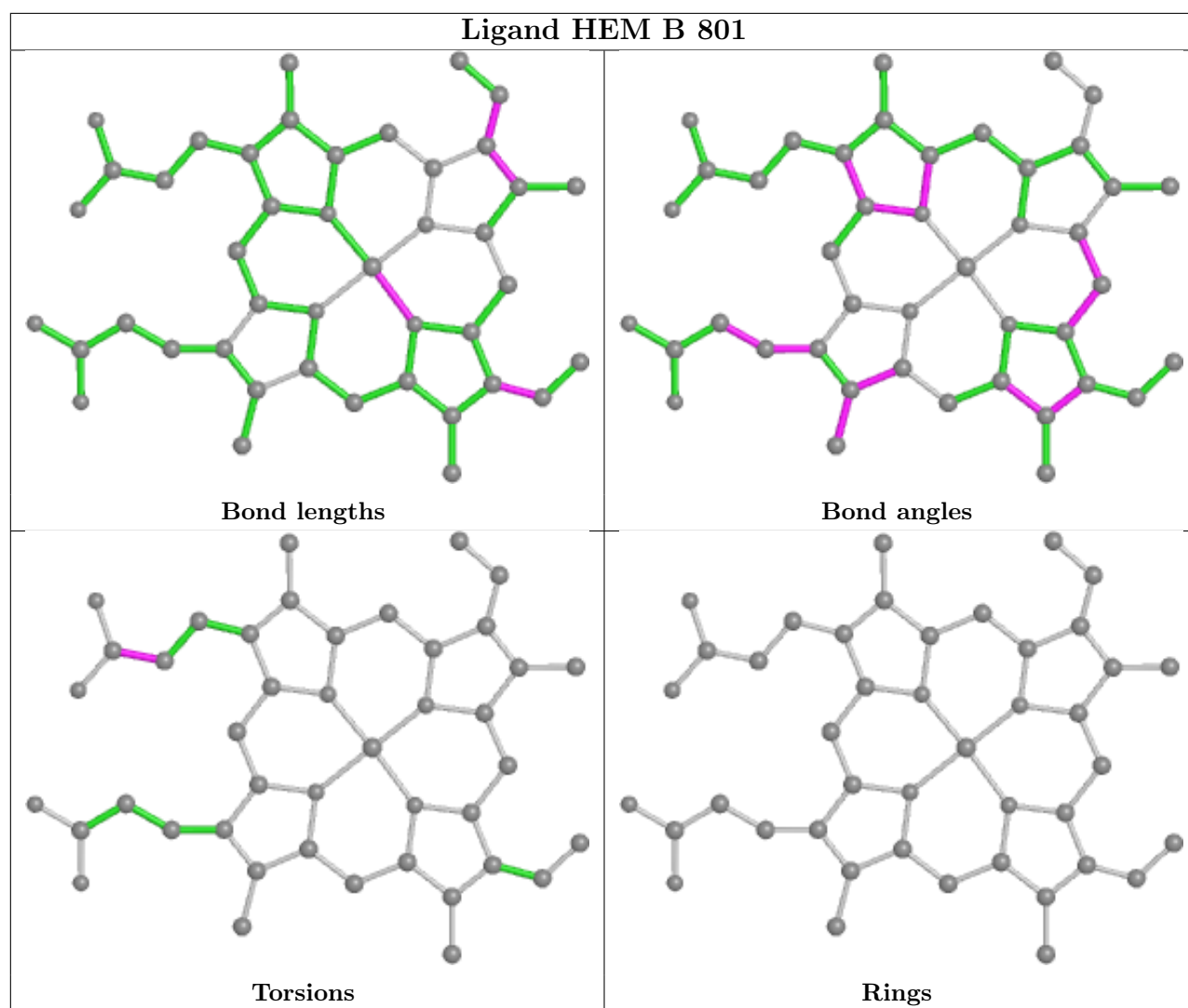


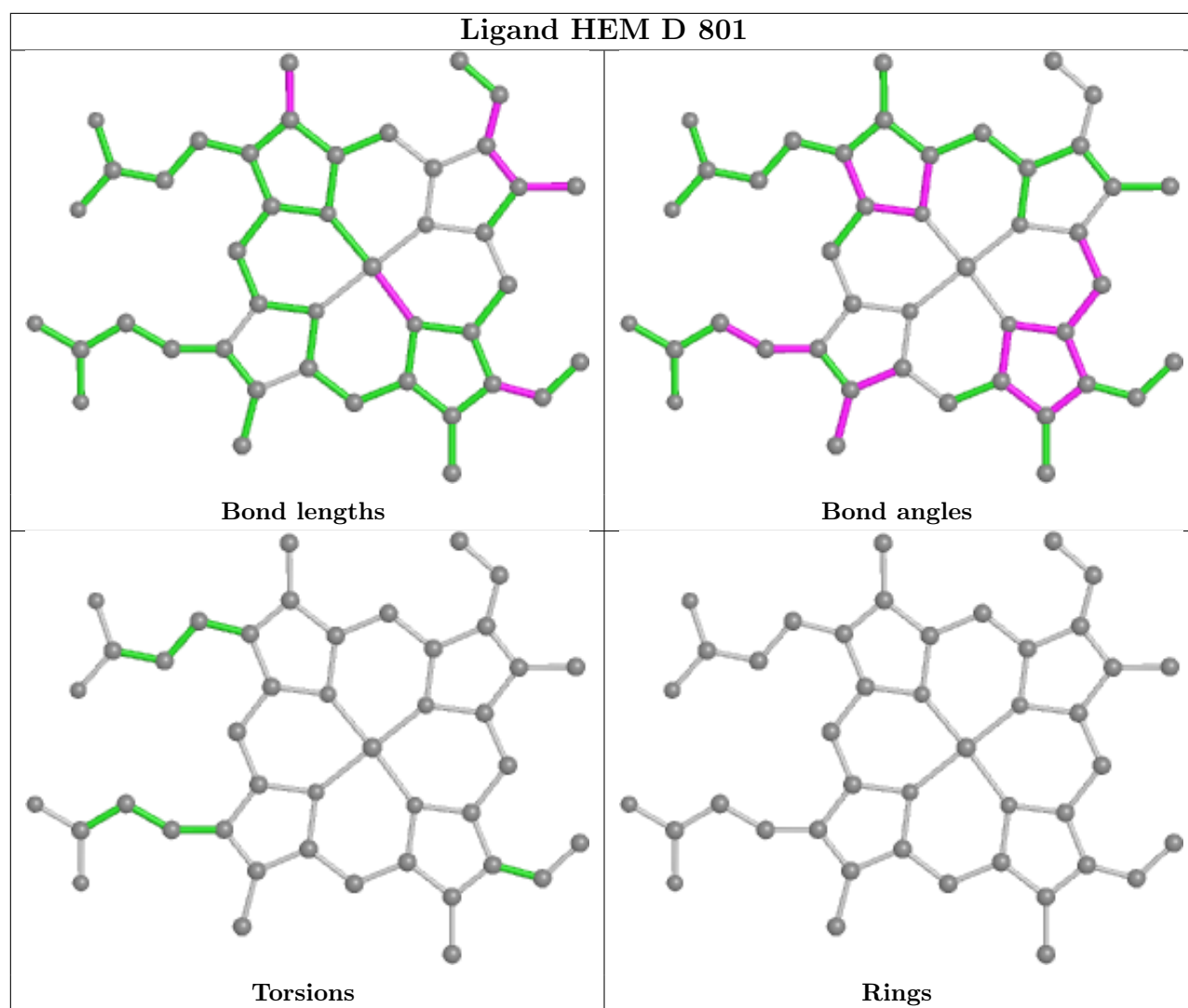
Ligand O5X B 803



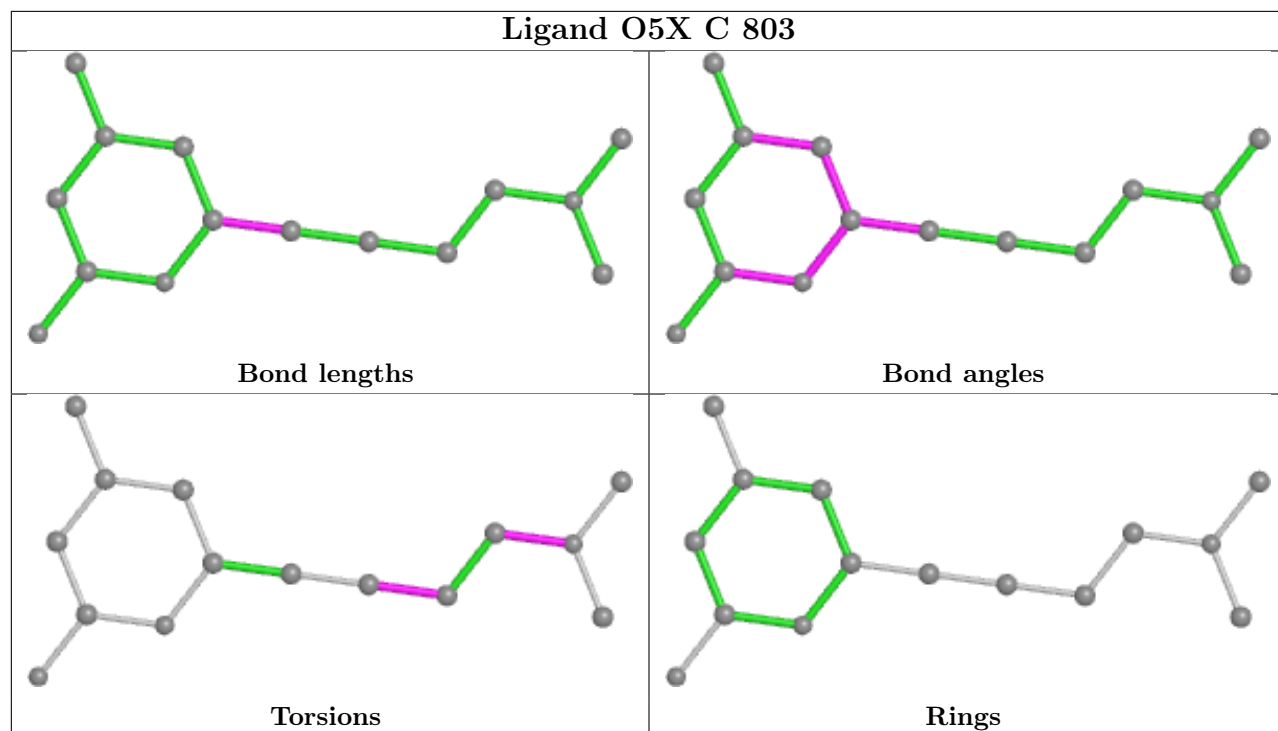
Ligand O5X D 803



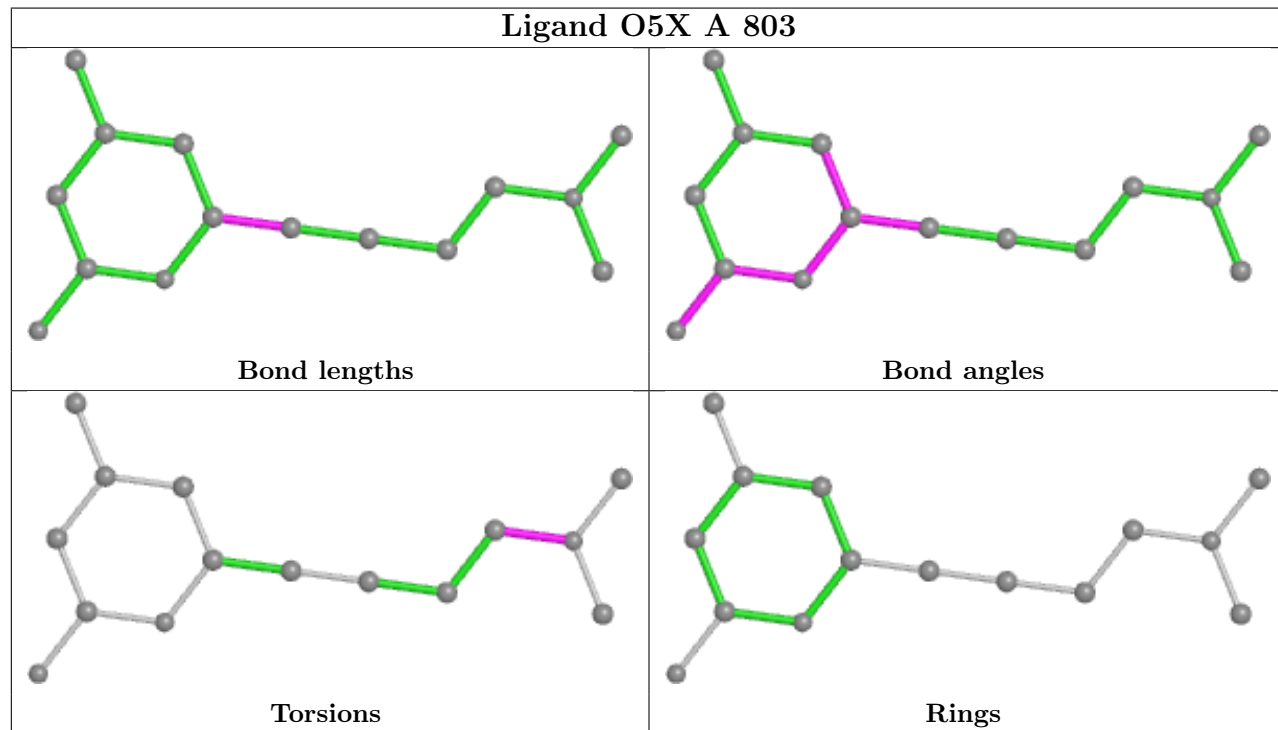


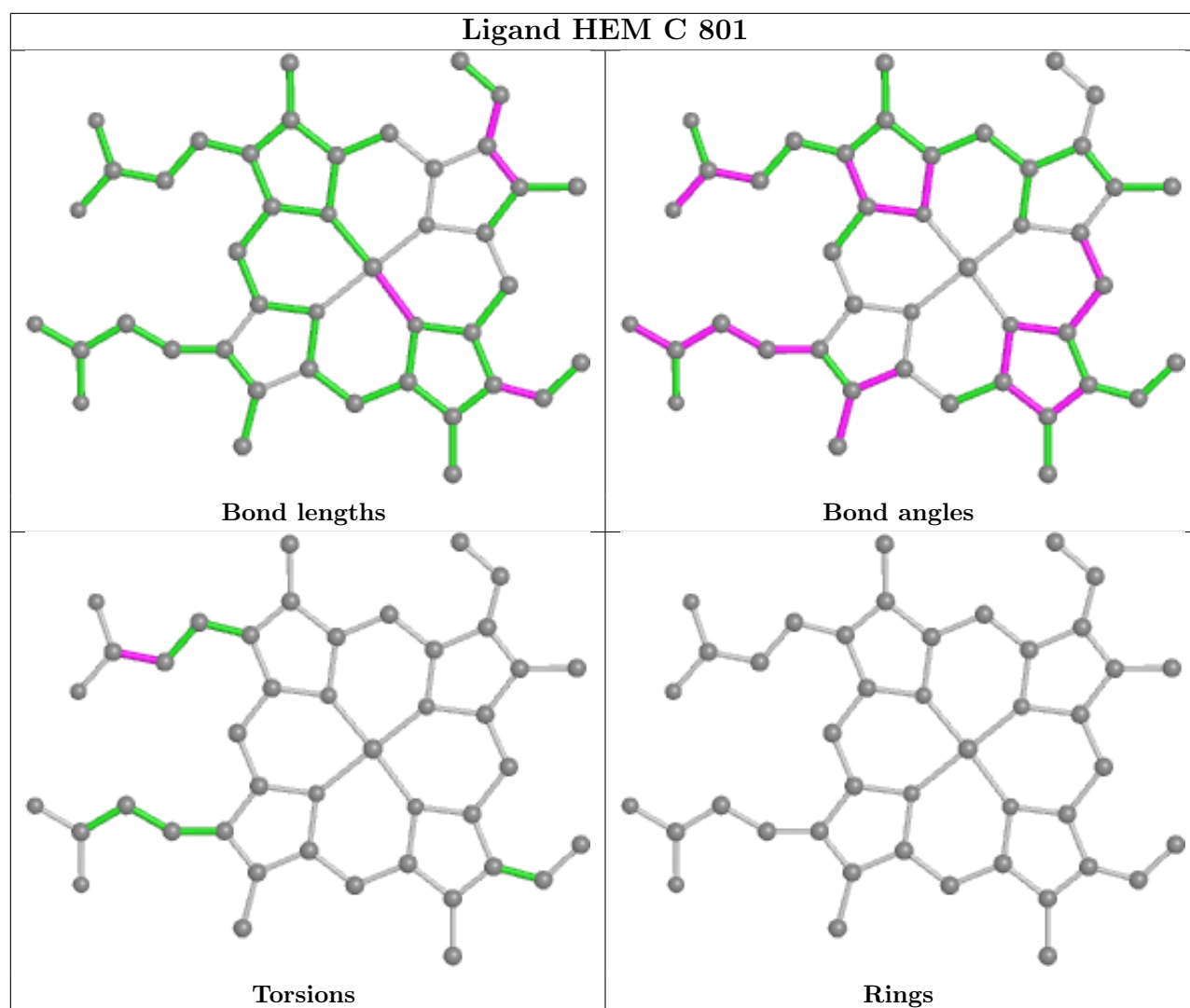


Ligand O5X C 803



Ligand O5X A 803





5.7 Other polymers [i](#)

There are no such residues in this entry.

5.8 Polymer linkage issues [i](#)

There are no chain breaks in this entry.

6 Fit of model and data

6.1 Protein, DNA and RNA chains

In the following table, the column labelled ‘#RSRZ > 2’ contains the number (and percentage) of RSRZ outliers, followed by percent RSRZ outliers for the chain as percentile scores relative to all X-ray entries and entries of similar resolution. The OWAB column contains the minimum, median, 95th percentile and maximum values of the occupancy-weighted average B-factor per residue. The column labelled ‘Q < 0.9’ lists the number of (and percentage) of residues with an average occupancy less than 0.9.

Mol	Chain	Analysed	<RSRZ>	#RSRZ>2	OWAB(Å ²)	Q<0.9
1	A	418/423 (98%)	-0.18	6 (1%) 75 80	25, 38, 66, 111	0
1	B	414/423 (97%)	-0.19	4 (0%) 82 86	23, 35, 58, 97	0
1	C	413/423 (97%)	-0.11	7 (1%) 70 75	23, 35, 58, 102	0
1	D	418/423 (98%)	-0.15	4 (0%) 82 86	24, 38, 65, 112	0
All	All	1663/1692 (98%)	-0.16	21 (1%) 77 81	23, 37, 63, 112	0

All (21) RSRZ outliers are listed below:

Mol	Chain	Res	Type	RSRZ
1	C	723	LEU	6.4
1	B	723	LEU	6.1
1	B	724	VAL	5.7
1	B	327	LEU	5.4
1	C	327	LEU	5.3
1	C	724	VAL	5.1
1	C	305	PHE	4.7
1	D	353	VAL	4.4
1	A	351	GLU	4.0
1	D	351	GLU	3.4
1	A	305	PHE	3.3
1	D	721	TRP	3.0
1	B	305	PHE	2.7
1	C	304	ARG	2.7
1	A	353	VAL	2.7
1	D	720	VAL	2.6
1	A	721	TRP	2.3
1	C	326	THR	2.3
1	A	348	ARG	2.1
1	A	720	VAL	2.1
1	C	335	ILE	2.0

6.2 Non-standard residues in protein, DNA, RNA chains [i](#)

There are no non-standard protein/DNA/RNA residues in this entry.

6.3 Carbohydrates [i](#)

There are no monosaccharides in this entry.

6.4 Ligands [i](#)

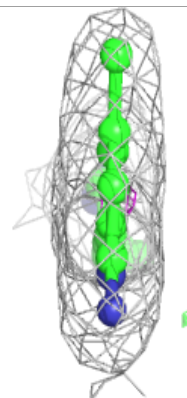
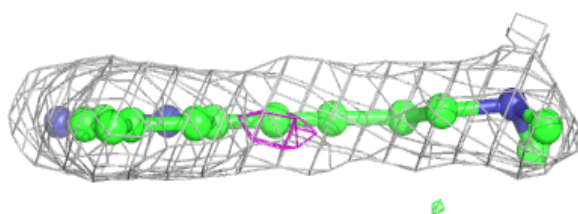
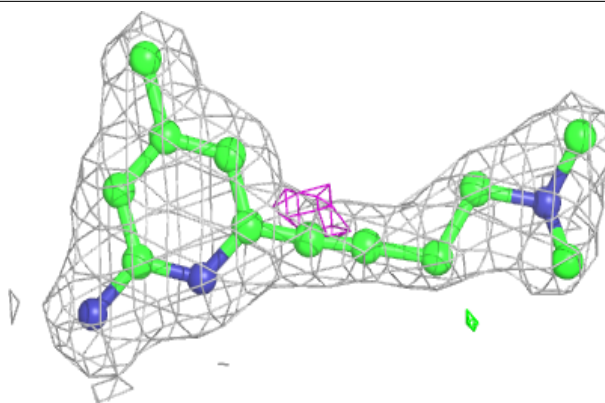
In the following table, the Atoms column lists the number of modelled atoms in the group and the number defined in the chemical component dictionary. The B-factors column lists the minimum, median, 95th percentile and maximum values of B factors of atoms in the group. The column labelled 'Q< 0.9' lists the number of atoms with occupancy less than 0.9.

Mol	Type	Chain	Res	Atoms	RSCC	RSR	B-factors(\AA^2)	Q<0.9
5	GOL	C	805	6/6	0.90	0.29	46,49,54,57	0
5	GOL	B	804	6/6	0.91	0.22	48,51,53,55	0
5	GOL	A	806	6/6	0.91	0.23	49,55,57,62	0
5	GOL	C	804	6/6	0.93	0.20	51,54,57,61	0
4	O5X	A	803	15/15	0.94	0.13	25,29,39,42	0
5	GOL	C	806	6/6	0.95	0.08	36,39,46,49	0
5	GOL	D	804	6/6	0.95	0.14	35,41,42,44	0
4	O5X	D	803	15/15	0.96	0.12	22,28,39,41	0
5	GOL	A	804	6/6	0.96	0.20	35,40,43,46	0
3	H4B	C	802	17/17	0.96	0.10	27,30,33,33	0
4	O5X	B	803	15/15	0.96	0.12	24,27,39,43	0
4	O5X	C	803	15/15	0.97	0.12	23,28,39,41	0
3	H4B	B	802	17/17	0.97	0.09	27,30,33,34	0
3	H4B	A	802	17/17	0.97	0.09	29,32,34,34	0
3	H4B	D	802	17/17	0.98	0.08	29,30,32,33	0
2	HEM	D	801	43/43	0.98	0.10	23,26,32,36	0
2	HEM	B	801	43/43	0.99	0.09	22,25,32,36	0
2	HEM	C	801	43/43	0.99	0.10	22,26,31,33	0
2	HEM	A	801	43/43	0.99	0.09	21,27,32,36	0
6	ZN	A	805	1/1	1.00	0.09	30,30,30,30	0
6	ZN	C	807	1/1	1.00	0.09	29,29,29,29	0

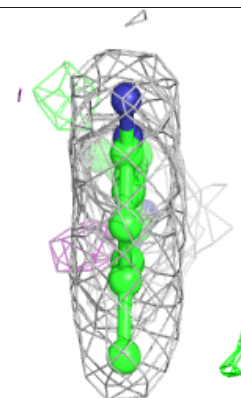
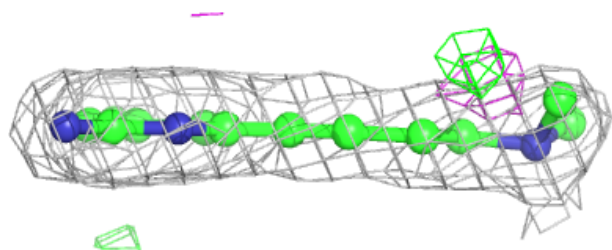
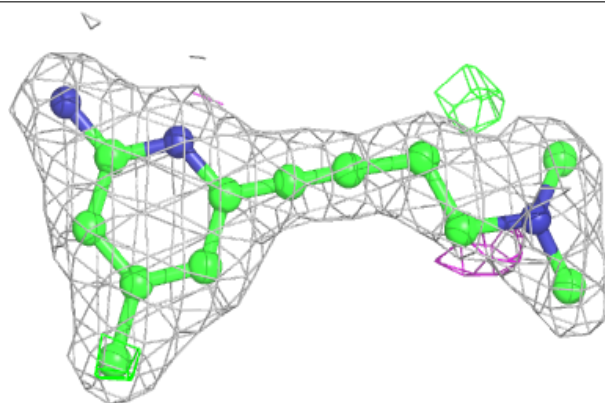
The following is a graphical depiction of the model fit to experimental electron density of all instances of the Ligand of Interest. In addition, ligands with molecular weight > 250 and outliers as shown on the geometry validation Tables will also be included. Each fit is shown from different orientation to approximate a three-dimensional view.

Electron density around O5X A 803:

$2mF_o-DF_c$ (at 0.7 rmsd) in gray
 mF_o-DF_c (at 3 rmsd) in purple (negative)
and green (positive)

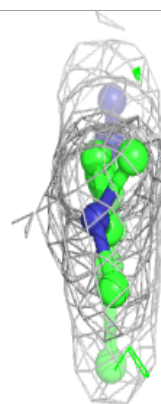
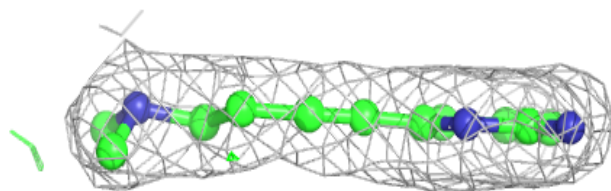
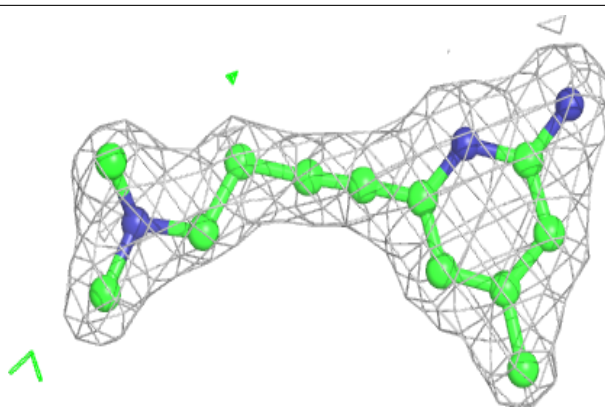
**Electron density around O5X D 803:**

$2mF_o-DF_c$ (at 0.7 rmsd) in gray
 mF_o-DF_c (at 3 rmsd) in purple (negative)
and green (positive)

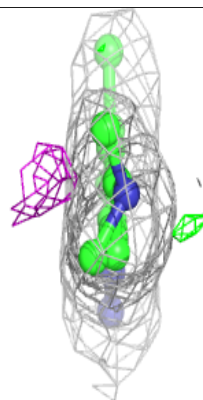
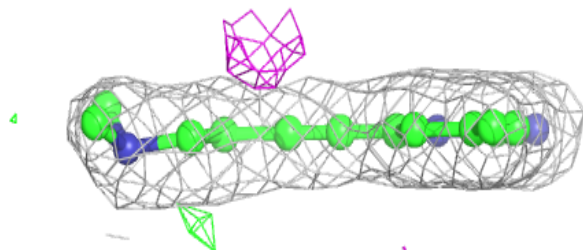
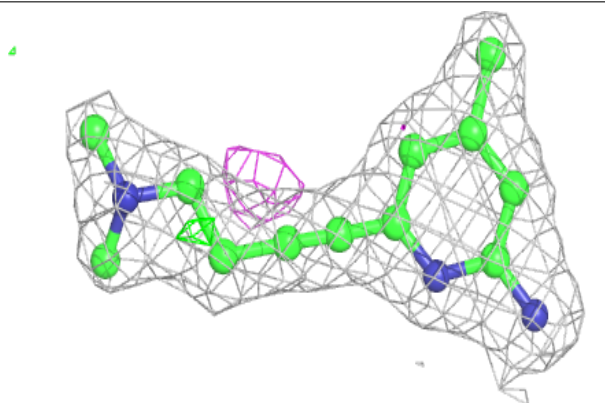


Electron density around O5X B 803:

$2mF_o-DF_c$ (at 0.7 rmsd) in gray
 mF_o-DF_c (at 3 rmsd) in purple (negative)
and green (positive)

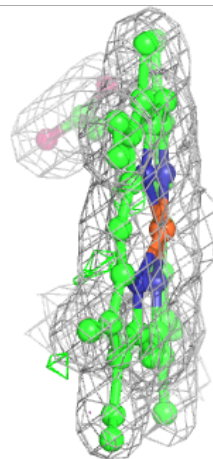
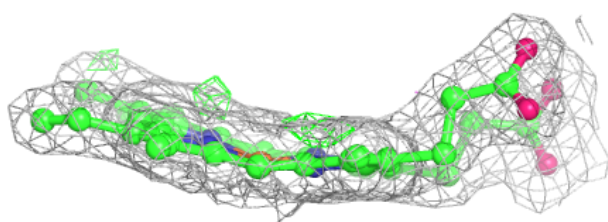
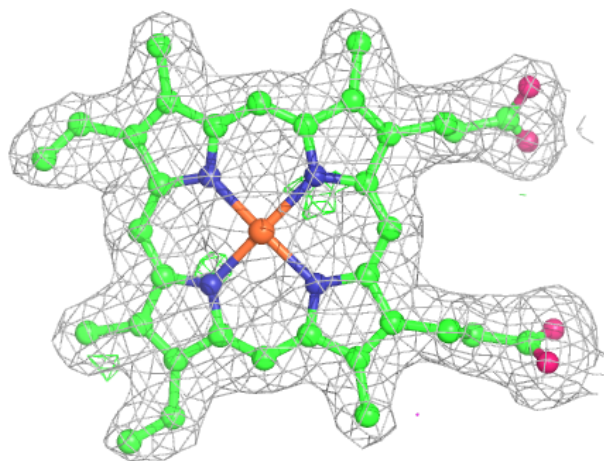
**Electron density around O5X C 803:**

$2mF_o-DF_c$ (at 0.7 rmsd) in gray
 mF_o-DF_c (at 3 rmsd) in purple (negative)
and green (positive)



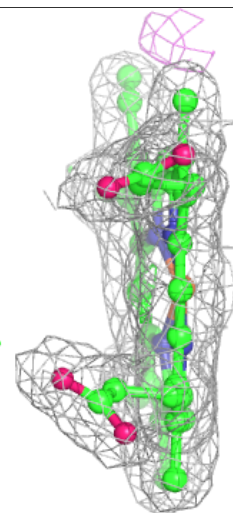
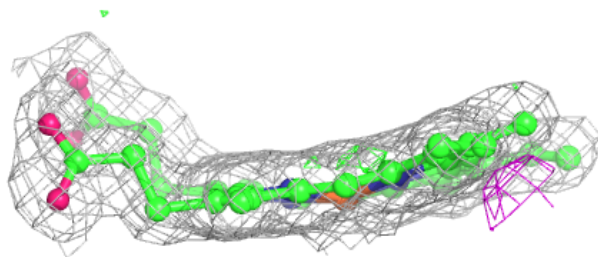
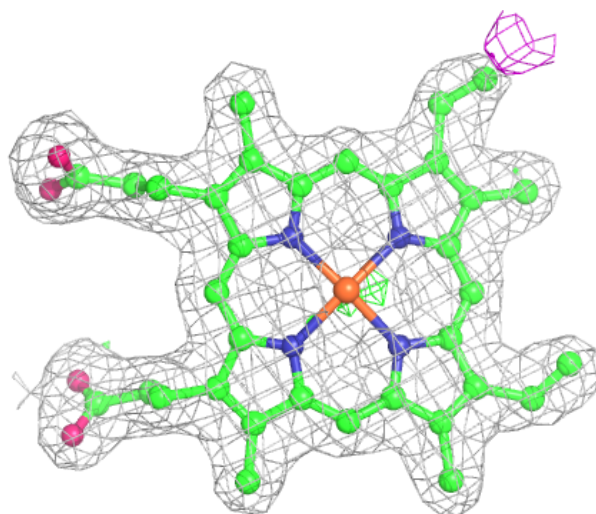
Electron density around HEM D 801:

$2mF_o-DF_c$ (at 0.7 rmsd) in gray
 mF_o-DF_c (at 3 rmsd) in purple (negative)
and green (positive)



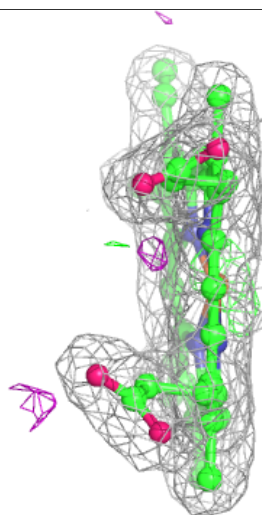
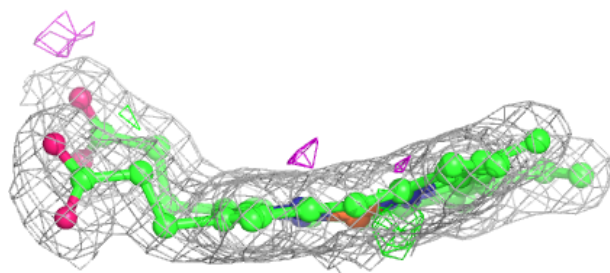
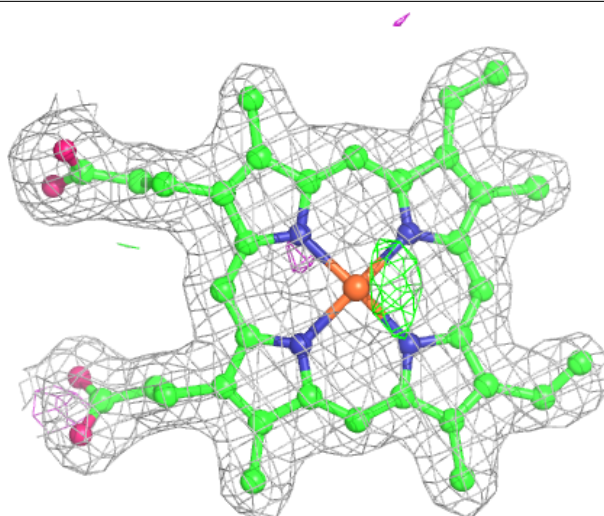
Electron density around HEM B 801:

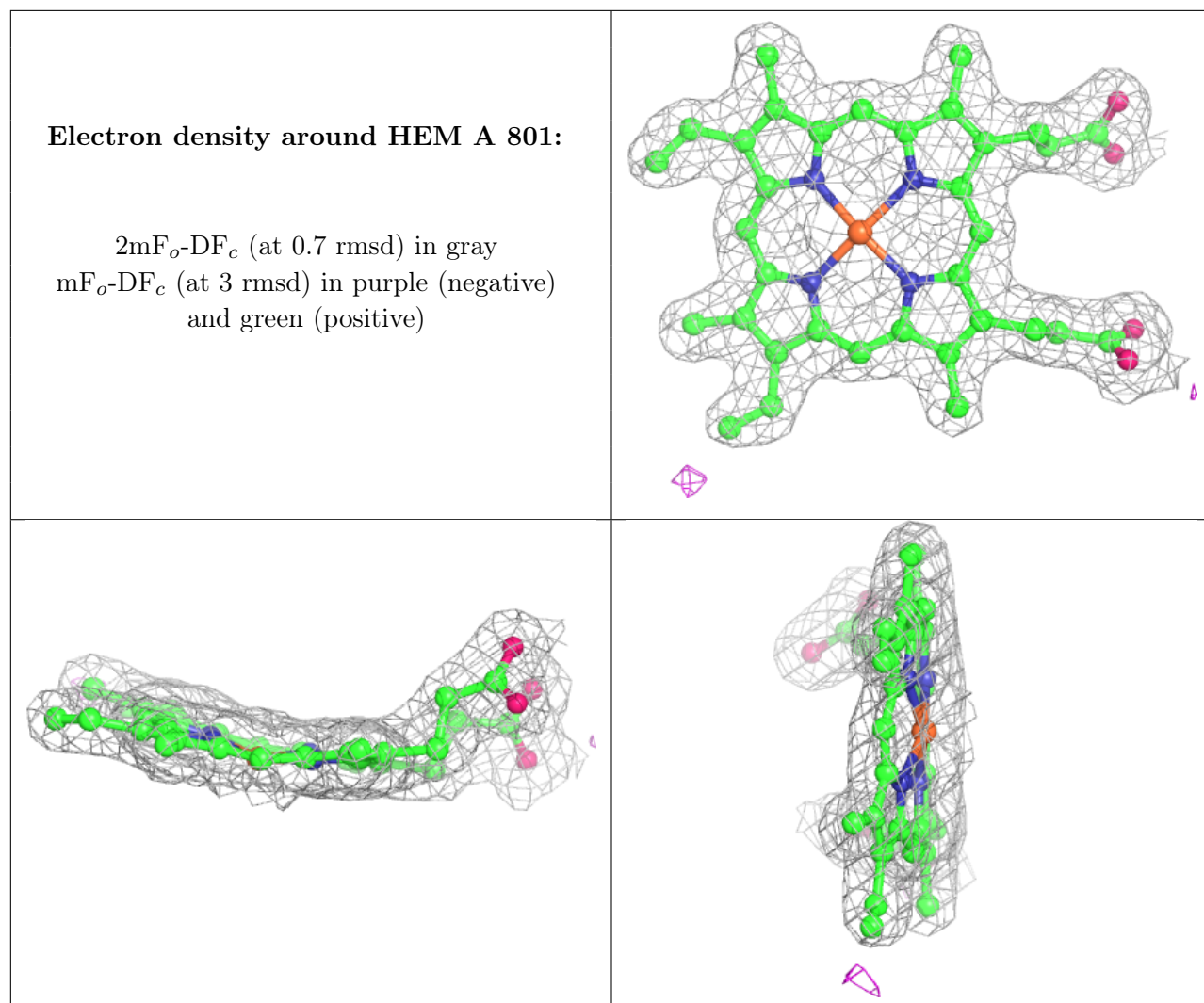
$2mF_o-DF_c$ (at 0.7 rmsd) in gray
 mF_o-DF_c (at 3 rmsd) in purple (negative)
and green (positive)



Electron density around HEM C 801:

$2mF_o-DF_c$ (at 0.7 rmsd) in gray
 mF_o-DF_c (at 3 rmsd) in purple (negative)
and green (positive)





6.5 Other polymers [i](#)

There are no such residues in this entry.