



# Full wwPDB X-ray Structure Validation Report ⓘ

Aug 21, 2020 – 03:14 PM BST

PDB ID : 5UTU  
Title : 2.65 Angstrom Resolution Crystal Structure of S-adenosylhomocysteinase from *Cryptosporidium parvum* in Complex with SAH and NAD  
Authors : Minasov, G.; Shuvalova, L.; Dubrovskaya, I.; Winsor, J.; Stam, J.; Kwon, K.; Anderson, W.F.; Center for Structural Genomics of Infectious Diseases (CS-GID)  
Deposited on : 2017-02-15  
Resolution : 2.65 Å (reported)

This is a Full wwPDB X-ray Structure Validation Report for a publicly released PDB entry.

We welcome your comments at [validation@mail.wwpdb.org](mailto:validation@mail.wwpdb.org)

A user guide is available at

<https://www.wwpdb.org/validation/2017/XrayValidationReportHelp>

with specific help available everywhere you see the ⓘ symbol.

---

The following versions of software and data (see [references ⓘ](#)) were used in the production of this report:

MolProbity : 4.02b-467  
Mogul : 1.8.5 (274361), CSD as541be (2020)  
Xtriage (Phenix) : 1.13  
EDS : 2.13.1  
buster-report : 1.1.7 (2018)  
Percentile statistics : 20191225.v01 (using entries in the PDB archive December 25th 2019)  
Refmac : 5.8.0158  
CCP4 : 7.0.044 (Gargrove)  
Ideal geometry (proteins) : Engh & Huber (2001)  
Ideal geometry (DNA, RNA) : Parkinson et al. (1996)  
Validation Pipeline (wwPDB-VP) : 2.13.1

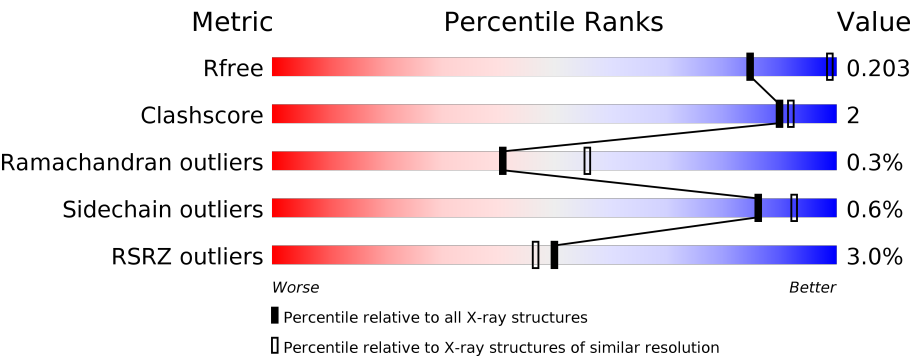
# 1 Overall quality at a glance i

The following experimental techniques were used to determine the structure:

*X-RAY DIFFRACTION*

The reported resolution of this entry is 2.65 Å.

Percentile scores (ranging between 0-100) for global validation metrics of the entry are shown in the following graphic. The table shows the number of entries on which the scores are based.



Metric	Whole archive (#Entries)	Similar resolution (#Entries, resolution range(Å))
$R_{free}$	130704	1332 (2.68-2.64)
Clashscore	141614	1374 (2.68-2.64)
Ramachandran outliers	138981	1349 (2.68-2.64)
Sidechain outliers	138945	1349 (2.68-2.64)
RSRZ outliers	127900	1318 (2.68-2.64)

The table below summarises the geometric issues observed across the polymeric chains and their fit to the electron density. The red, orange, yellow and green segments on the lower bar indicate the fraction of residues that contain outliers for  $\geq 3$ , 2, 1 and 0 types of geometric quality criteria respectively. A grey segment represents the fraction of residues that are not modelled. The numeric value for each fraction is indicated below the corresponding segment, with a dot representing fractions  $\leq 5\%$ . The upper red bar (where present) indicates the fraction of residues that have poor fit to the electron density. The numeric value is given above the bar.

Mol	Chain	Length	Quality of chain
1	A	498	<div><div>3%</div><div><div></div><div>93%</div><div>6%</div><div>.</div></div></div>
1	B	498	<div><div>5%</div><div><div></div><div>95%</div><div>.</div><div>.</div></div></div>
1	C	498	<div><div>2%</div><div><div></div><div>93%</div><div>6%</div><div>.</div></div></div>
1	D	498	<div><div>3%</div><div><div></div><div>93%</div><div>5%</div><div>.</div></div></div>
1	E	498	<div><div>2%</div><div><div></div><div>93%</div><div>6%</div><div>.</div></div></div>
1	F	498	<div><div>3%</div><div><div></div><div>92%</div><div>6%</div><div>..</div></div></div>

Continued on next page...

Continued from previous page...

Mol	Chain	Length	Quality of chain
1	G	498	<div><div></div><div>2%</div><div>92%</div><div>6% ..</div></div>
1	H	498	<div><div></div><div>2%</div><div>91%</div><div>6% ..</div></div>

## 2 Entry composition

There are 10 unique types of molecules in this entry. The entry contains 33201 atoms, of which 0 are hydrogens and 0 are deuteriums.

In the tables below, the ZeroOcc column contains the number of atoms modelled with zero occupancy, the AltConf column contains the number of residues with at least one atom in alternate conformation and the Trace column contains the number of residues modelled with at most 2 atoms.

- Molecule 1 is a protein called Adenosylhomocysteinase.

Mol	Chain	Residues	Atoms					ZeroOcc	AltConf	Trace
1	A	494	Total	C	N	O	S	0	8	0
			3979	2528	666	756	29			
1	B	494	Total	C	N	O	S	0	0	0
			3902	2478	654	742	28			
1	C	491	Total	C	N	O	S	0	0	0
			3877	2464	650	735	28			
1	D	493	Total	C	N	O	S	0	1	0
			3901	2477	653	742	29			
1	E	494	Total	C	N	O	S	0	5	0
			3950	2507	665	749	29			
1	F	493	Total	C	N	O	S	0	6	0
			3943	2503	660	751	29			
1	G	495	Total	C	N	O	S	0	4	0
			3949	2511	660	749	29			
1	H	487	Total	C	N	O	S	0	9	0
			3922	2495	654	744	29			

There are 24 discrepancies between the modelled and reference sequences:

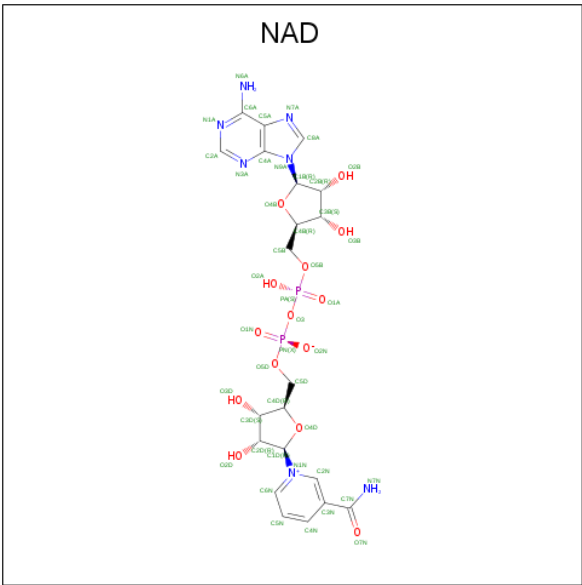
Chain	Residue	Modelled	Actual	Comment	Reference
A	-2	SER	-	expression tag	UNP Q5CPH1
A	-1	ASN	-	expression tag	UNP Q5CPH1
A	0	ALA	-	expression tag	UNP Q5CPH1
B	-2	SER	-	expression tag	UNP Q5CPH1
B	-1	ASN	-	expression tag	UNP Q5CPH1
B	0	ALA	-	expression tag	UNP Q5CPH1
C	-2	SER	-	expression tag	UNP Q5CPH1
C	-1	ASN	-	expression tag	UNP Q5CPH1
C	0	ALA	-	expression tag	UNP Q5CPH1
D	-2	SER	-	expression tag	UNP Q5CPH1
D	-1	ASN	-	expression tag	UNP Q5CPH1
D	0	ALA	-	expression tag	UNP Q5CPH1
E	-2	SER	-	expression tag	UNP Q5CPH1

*Continued on next page...*

Continued from previous page...

Chain	Residue	Modelled	Actual	Comment	Reference
E	-1	ASN	-	expression tag	UNP Q5CPH1
E	0	ALA	-	expression tag	UNP Q5CPH1
F	-2	SER	-	expression tag	UNP Q5CPH1
F	-1	ASN	-	expression tag	UNP Q5CPH1
F	0	ALA	-	expression tag	UNP Q5CPH1
G	-2	SER	-	expression tag	UNP Q5CPH1
G	-1	ASN	-	expression tag	UNP Q5CPH1
G	0	ALA	-	expression tag	UNP Q5CPH1
H	-2	SER	-	expression tag	UNP Q5CPH1
H	-1	ASN	-	expression tag	UNP Q5CPH1
H	0	ALA	-	expression tag	UNP Q5CPH1

- Molecule 2 is NICOTINAMIDE-ADENINE-DINUCLEOTIDE (three-letter code: NAD) (formula: C<sub>21</sub>H<sub>27</sub>N<sub>7</sub>O<sub>14</sub>P<sub>2</sub>).



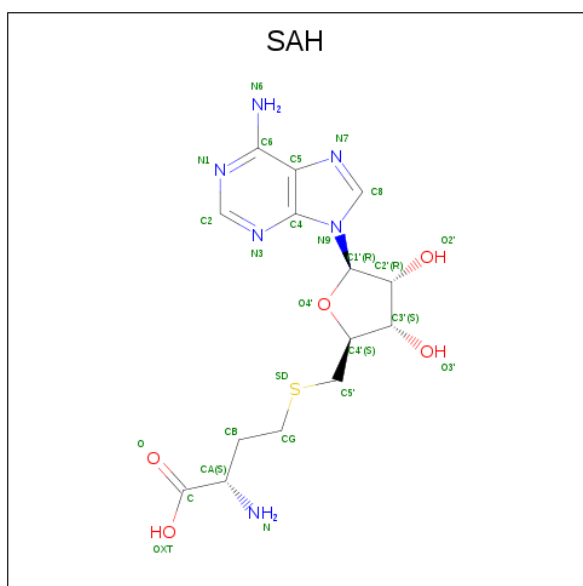
Mol	Chain	Residues	Atoms					ZeroOcc	AltConf
2	A	1	Total	C	N	O	P	0	0
			44	21	7	14	2		
2	B	1	Total	C	N	O	P	0	0
			44	21	7	14	2		
2	C	1	Total	C	N	O	P	0	0
			44	21	7	14	2		
2	D	1	Total	C	N	O	P	0	0
			44	21	7	14	2		
2	E	1	Total	C	N	O	P	0	0
			44	21	7	14	2		

Continued on next page...

Continued from previous page...

Mol	Chain	Residues	Atoms					ZeroOcc	AltConf
2	F	1	Total	C	N	O	P	0	0
			44	21	7	14	2		
2	G	1	Total	C	N	O	P	0	0
			44	21	7	14	2		
2	H	1	Total	C	N	O	P	0	0
			44	21	7	14	2		

- Molecule 3 is S-ADENOSYL-L-HOMOCYSTEINE (three-letter code: SAH) (formula:  $C_{14}H_{20}N_6O_5S$ ).

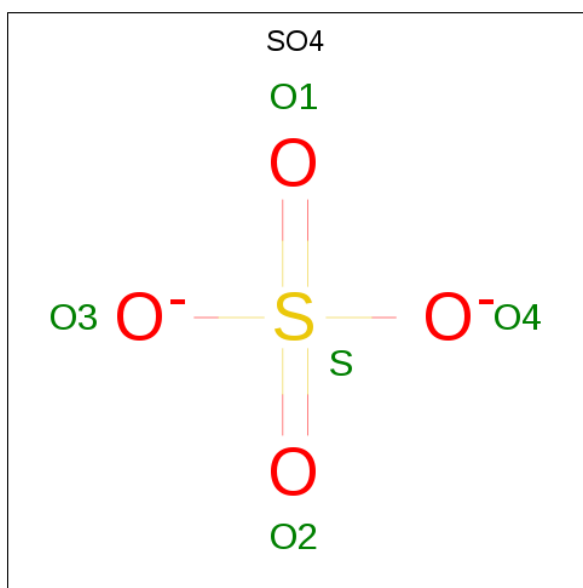


Mol	Chain	Residues	Atoms					ZeroOcc	AltConf
3	A	1	Total	C	N	O	S	0	0
			26	14	6	5	1		
3	B	1	Total	C	N	O	S	0	0
			26	14	6	5	1		
3	C	1	Total	C	N	O	S	0	0
			26	14	6	5	1		
3	D	1	Total	C	N	O	S	0	0
			26	14	6	5	1		
3	E	1	Total	C	N	O	S	0	0
			26	14	6	5	1		
3	F	1	Total	C	N	O	S	0	1
			26	14	6	5	1		
3	G	1	Total	C	N	O	S	0	0
			26	14	6	5	1		
3	H	1	Total	C	N	O	S	0	1
			26	14	6	5	1		

- Molecule 4 is CHLORIDE ION (three-letter code: CL) (formula: Cl).

Mol	Chain	Residues	Atoms		ZeroOcc	AltConf
4	G	2	Total	Cl	0	0
			2	2		
4	D	1	Total	Cl	0	0
			1	1		
4	E	2	Total	Cl	0	0
			2	2		
4	H	1	Total	Cl	0	0
			1	1		
4	B	2	Total	Cl	0	0
			2	2		
4	C	1	Total	Cl	0	0
			1	1		
4	A	1	Total	Cl	0	0
			1	1		
4	F	1	Total	Cl	0	0
			1	1		

- Molecule 5 is SULFATE ION (three-letter code: SO4) (formula: O<sub>4</sub>S).



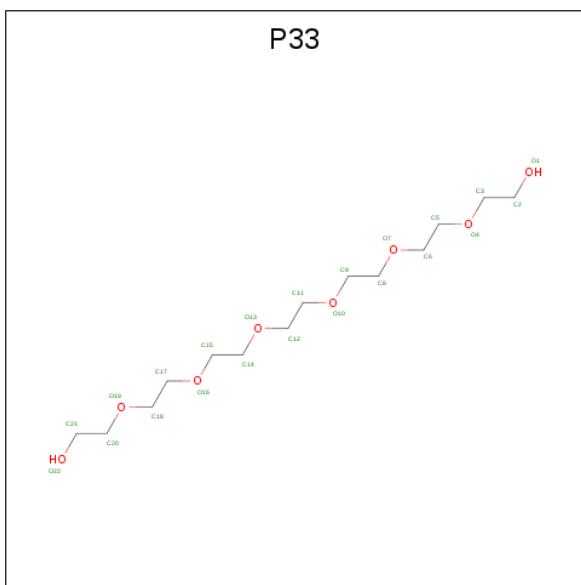
Mol	Chain	Residues	Atoms			ZeroOcc	AltConf
5	A	1	Total	O	S	0	0
			5	4	1		
5	A	1	Total	O	S	0	0
			5	4	1		
5	A	1	Total	O	S	0	0
			5	4	1		

*Continued on next page...*

*Continued from previous page...*

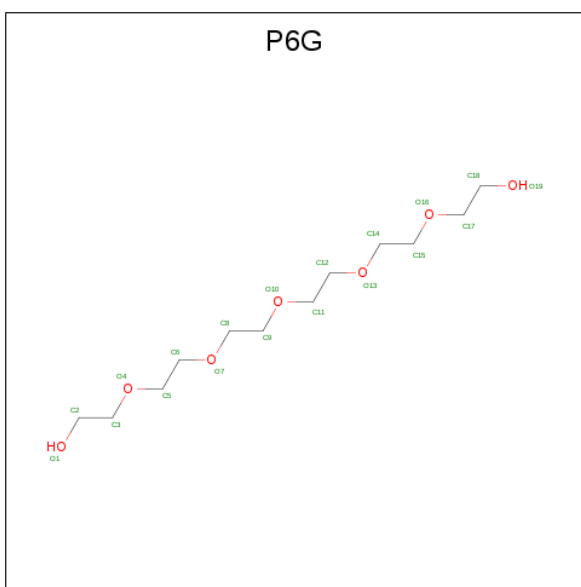
Mol	Chain	Residues	Atoms			ZeroOcc	AltConf
5	A	1	Total	O	S	0	0
			5	4	1		
5	B	1	Total	O	S	0	0
			5	4	1		
5	B	1	Total	O	S	0	0
			5	4	1		
5	C	1	Total	O	S	0	0
			5	4	1		
5	C	1	Total	O	S	0	0
			5	4	1		
5	C	1	Total	O	S	0	0
			5	4	1		
5	C	1	Total	O	S	0	0
			5	4	1		
5	D	1	Total	O	S	0	0
			5	4	1		
5	D	1	Total	O	S	0	0
			5	4	1		
5	D	1	Total	O	S	0	0
			5	4	1		
5	E	1	Total	O	S	0	0
			5	4	1		
5	E	1	Total	O	S	0	0
			5	4	1		
5	F	1	Total	O	S	0	0
			5	4	1		
5	F	1	Total	O	S	0	0
			5	4	1		
5	G	1	Total	O	S	0	0
			5	4	1		
5	G	1	Total	O	S	0	0
			5	4	1		
5	G	1	Total	O	S	0	0
			5	4	1		
5	H	1	Total	O	S	0	0
			5	4	1		
5	H	1	Total	O	S	0	0
			5	4	1		

- Molecule 6 is 3,6,9,12,15,18-HEXAOXAICOSANE-1,20-DIOL (three-letter code: P33) (formula: C<sub>14</sub>H<sub>30</sub>O<sub>8</sub>).



Mol	Chain	Residues	Atoms			ZeroOcc	AltConf
6	A	1	Total 22	C 14	O 8	0	0
6	B	1	Total 22	C 14	O 8	0	0
6	H	1	Total 22	C 14	O 8	0	0

- Molecule 7 is HEXAETHYLENE GLYCOL (three-letter code: P6G) (formula:  $\text{C}_{12}\text{H}_{26}\text{O}_7$ ).



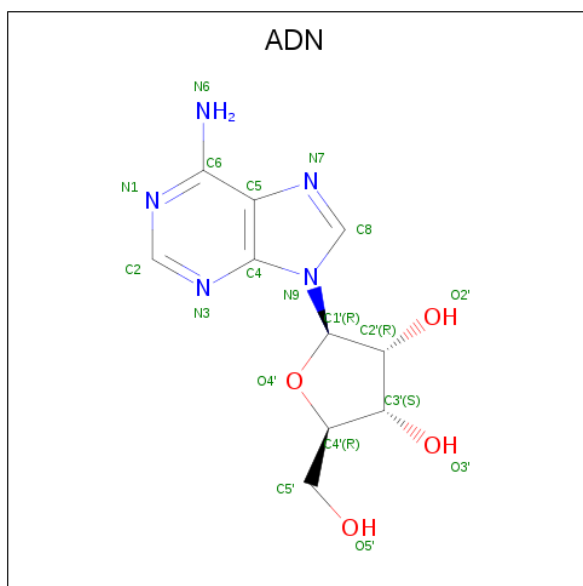
Mol	Chain	Residues	Atoms			ZeroOcc	AltConf
7	D	1	Total	C	O	0	0
			19	12	7		

*Continued on next page...*

*Continued from previous page...*

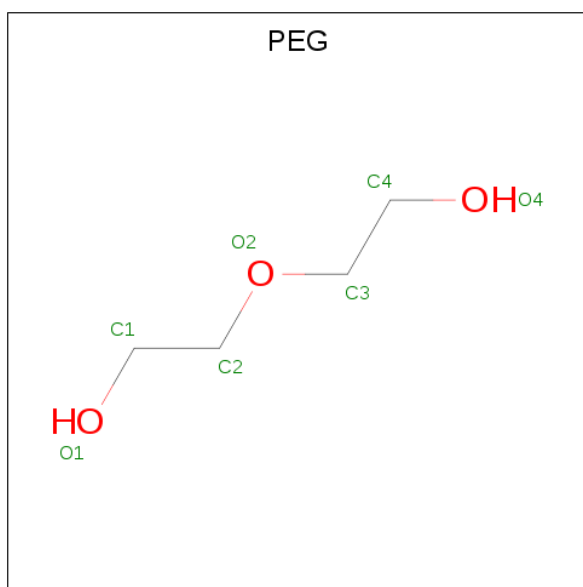
Mol	Chain	Residues	Atoms			ZeroOcc	AltConf
7	F	1	Total	C	O	0	0
			19	12	7		

- Molecule 8 is ADENOSINE (three-letter code: ADN) (formula:  $C_{10}H_{13}N_5O_4$ ).



Mol	Chain	Residues	Atoms				ZeroOcc	AltConf
8	F	1	Total	C	N	O	0	1
			19	10	5	4		
8	H	1	Total	C	N	O	0	1
			19	10	5	4		

- Molecule 9 is DI(HYDROXYETHYL)ETHER (three-letter code: PEG) (formula:  $C_4H_{10}O_3$ ).



Mol	Chain	Residues	Atoms			ZeroOcc	AltConf
9	G	1	Total	C	O	0	0
			7	4	3		
9	G	1	Total	C	O	0	0
			7	4	3		

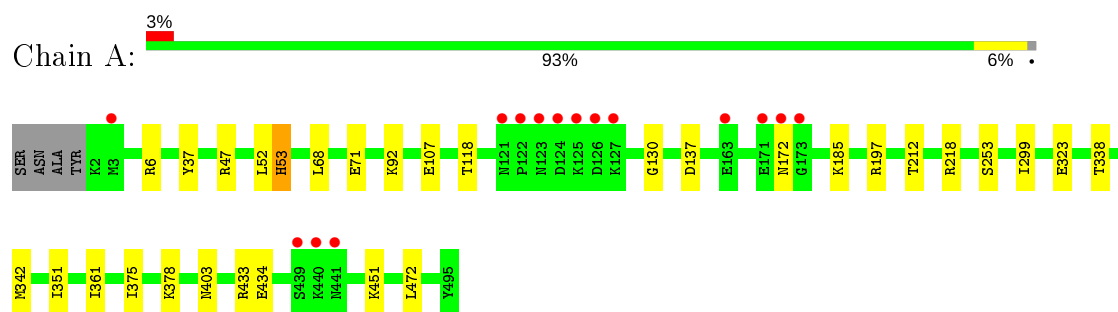
- Molecule 10 is water.

Mol	Chain	Residues	Atoms		ZeroOcc	AltConf
10	A	157	Total	O	0	2
			159	159		
10	B	84	Total	O	0	1
			85	85		
10	C	128	Total	O	0	2
			130	130		
10	D	103	Total	O	0	1
			104	104		
10	E	146	Total	O	0	2
			148	148		
10	F	90	Total	O	0	1
			91	91		
10	G	123	Total	O	0	0
			123	123		
10	H	100	Total	O	0	2
			101	101		

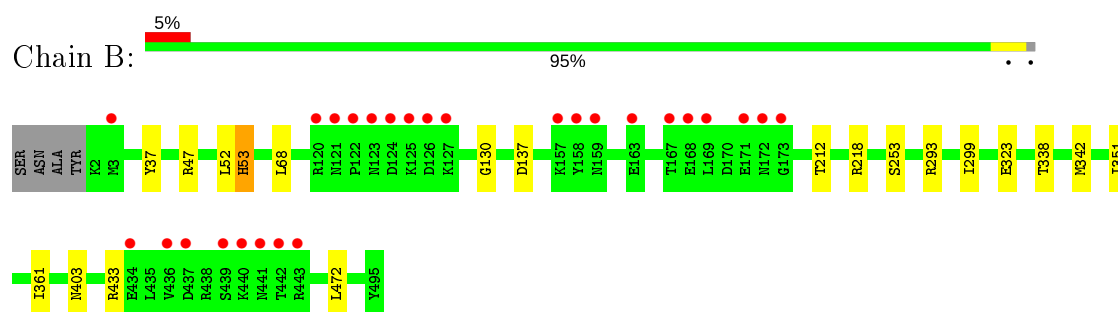
### 3 Residue-property plots [i](#)

These plots are drawn for all protein, RNA, DNA and oligosaccharide chains in the entry. The first graphic for a chain summarises the proportions of the various outlier classes displayed in the second graphic. The second graphic shows the sequence view annotated by issues in geometry and electron density. Residues are color-coded according to the number of geometric quality criteria for which they contain at least one outlier: green = 0, yellow = 1, orange = 2 and red = 3 or more. A red dot above a residue indicates a poor fit to the electron density ( $RSRZ > 2$ ). Stretches of 2 or more consecutive residues without any outlier are shown as a green connector. Residues present in the sample, but not in the model, are shown in grey.

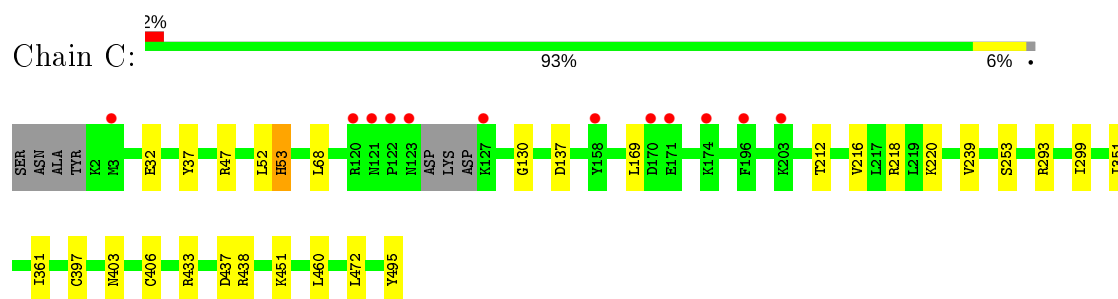
- Molecule 1: Adenosylhomocysteinase



- Molecule 1: Adenosylhomocysteinase

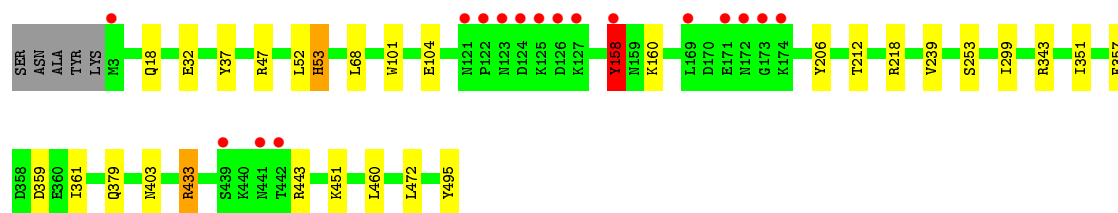


- Molecule 1: Adenosylhomocysteinase

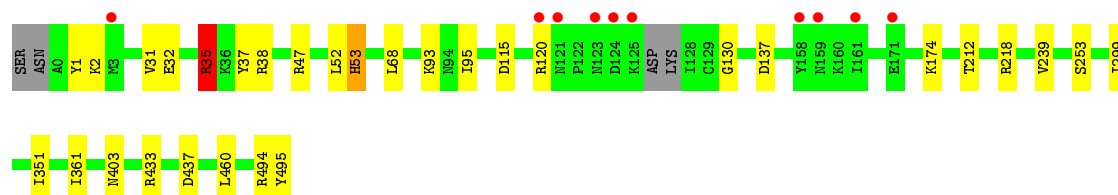
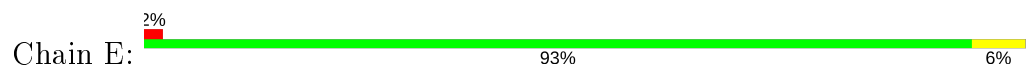


- Molecule 1: Adenosylhomocysteinase

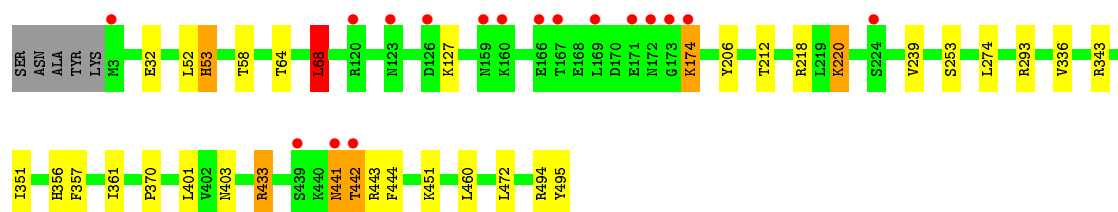
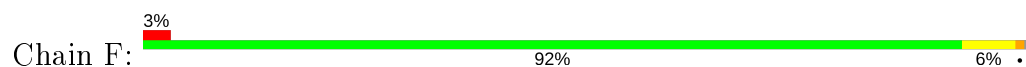




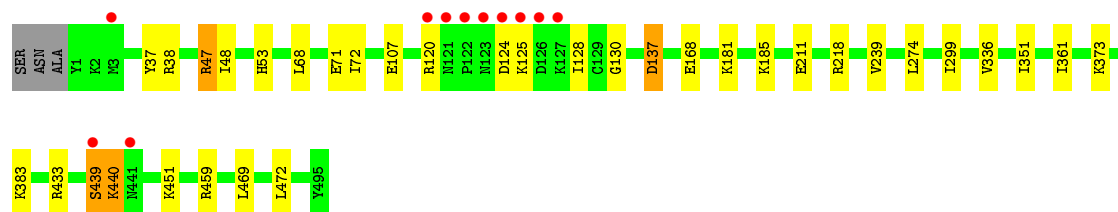
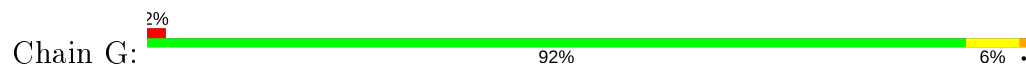
● Molecule 1: Adenosylhomocysteinase



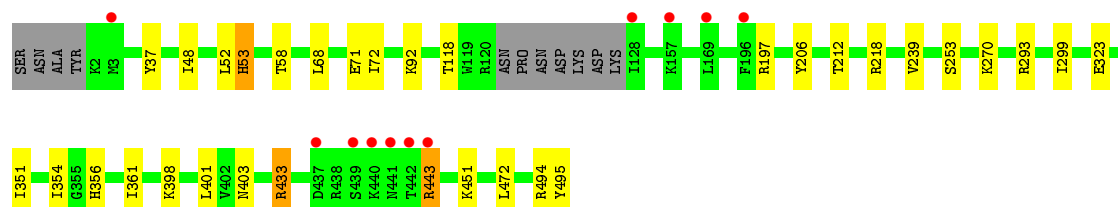
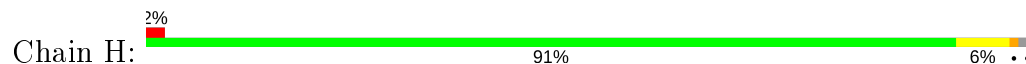
● Molecule 1: Adenosylhomocysteinase



● Molecule 1: Adenosylhomocysteinase



● Molecule 1: Adenosylhomocysteinase



## 4 Data and refinement statistics

Property	Value	Source
Space group	P 1 21 1	Depositor
Cell constants a, b, c, $\alpha$ , $\beta$ , $\gamma$	107.91Å 185.83Å 121.62Å 90.00° 97.98° 90.00°	Depositor
Resolution (Å)	30.00 – 2.65 29.76 – 2.65	Depositor EDS
% Data completeness (in resolution range)	99.9 (30.00-2.65) 100.0 (29.76-2.65)	Depositor EDS
$R_{merge}$	0.10	Depositor
$R_{sym}$	0.10	Depositor
$\langle I/\sigma(I) \rangle$ <sup>1</sup>	3.13 (at 2.64Å)	Xtriage
Refinement program	REFMAC 5.8.0158	Depositor
R, $R_{free}$	0.170 , 0.202 0.172 , 0.203	Depositor DCC
$R_{free}$ test set	6930 reflections (5.05%)	wwPDB-VP
Wilson B-factor (Å <sup>2</sup> )	45.4	Xtriage
Anisotropy	0.032	Xtriage
Bulk solvent $k_{sol}$ (e/Å <sup>3</sup> ), $B_{sol}$ (Å <sup>2</sup> )	0.30 , 51.0	EDS
L-test for twinning <sup>2</sup>	$\langle  L  \rangle = 0.50$ , $\langle L^2 \rangle = 0.34$	Xtriage
Estimated twinning fraction	No twinning to report.	Xtriage
$F_o, F_c$ correlation	0.96	EDS
Total number of atoms	33201	wwPDB-VP
Average B, all atoms (Å <sup>2</sup> )	53.0	wwPDB-VP

Xtriage's analysis on translational NCS is as follows: *The largest off-origin peak in the Patterson function is 2.66% of the height of the origin peak. No significant pseudotranslation is detected.*

<sup>1</sup>Intensities estimated from amplitudes.

<sup>2</sup>Theoretical values of  $\langle |L| \rangle$ ,  $\langle L^2 \rangle$  for acentric reflections are 0.5, 0.333 respectively for untwinned datasets, and 0.375, 0.2 for perfectly twinned datasets.

## 5 Model quality ⓘ

### 5.1 Standard geometry ⓘ

Bond lengths and bond angles in the following residue types are not validated in this section: SAH, NAD, CL, SO4, P6G, ADN, P33, PEG

The Z score for a bond length (or angle) is the number of standard deviations the observed value is removed from the expected value. A bond length (or angle) with  $|Z| > 5$  is considered an outlier worth inspection. RMSZ is the root-mean-square of all Z scores of the bond lengths (or angles).

Mol	Chain	Bond lengths		Bond angles	
		RMSZ	# Z  >5	RMSZ	# Z  >5
1	A	0.47	0/4045	0.77	6/5451 (0.1%)
1	B	0.44	0/3966	0.74	5/5348 (0.1%)
1	C	0.48	0/3940	0.74	6/5312 (0.1%)
1	D	0.47	1/3965 (0.0%)	0.79	10/5347 (0.2%)
1	E	0.48	0/4014	0.77	7/5410 (0.1%)
1	F	0.48	0/4009	0.76	8/5406 (0.1%)
1	G	0.50	0/4015	0.84	13/5414 (0.2%)
1	H	0.47	0/3987	0.73	4/5374 (0.1%)
All	All	0.48	1/31941 (0.0%)	0.77	59/43062 (0.1%)

All (1) bond length outliers are listed below:

Mol	Chain	Res	Type	Atoms	Z	Observed(Å)	Ideal(Å)
1	D	359	ASP	CB-CG	-6.50	1.38	1.51

All (59) bond angle outliers are listed below:

Mol	Chain	Res	Type	Atoms	Z	Observed(°)	Ideal(°)
1	G	47	ARG	NE-CZ-NH1	-16.30	112.15	120.30
1	G	459	ARG	NE-CZ-NH2	15.01	127.80	120.30
1	D	359	ASP	CB-CA-C	-14.08	82.23	110.40
1	E	35[A]	ARG	CG-CD-NE	-10.33	90.11	111.80
1	E	35[B]	ARG	CG-CD-NE	-10.33	90.11	111.80
1	G	451	LYS	CD-CE-NZ	-9.88	88.98	111.70
1	C	451	LYS	CD-CE-NZ	-9.78	89.20	111.70
1	D	451	LYS	CD-CE-NZ	-9.66	89.48	111.70
1	C	433	ARG	CG-CD-NE	-9.18	92.53	111.80
1	B	218	ARG	NE-CZ-NH1	-8.93	115.84	120.30
1	B	433	ARG	CG-CD-NE	-8.85	93.22	111.80
1	A	218	ARG	NE-CZ-NH1	-7.95	116.33	120.30

*Continued on next page...*

*Continued from previous page...*

Mol	Chain	Res	Type	Atoms	Z	Observed(°)	Ideal(°)
1	E	218	ARG	NE-CZ-NH1	-7.80	116.40	120.30
1	G	459	ARG	NE-CZ-NH1	-7.74	116.43	120.30
1	A	92	LYS	CB-CG-CD	7.35	130.70	111.60
1	G	47	ARG	NE-CZ-NH2	7.15	123.88	120.30
1	F	343	ARG	NE-CZ-NH2	7.10	123.85	120.30
1	F	293	ARG	NE-CZ-NH1	-7.00	116.80	120.30
1	B	293	ARG	NE-CZ-NH1	-6.74	116.93	120.30
1	C	293	ARG	NE-CZ-NH1	-6.64	116.98	120.30
1	C	438	ARG	NE-CZ-NH1	6.59	123.59	120.30
1	D	47	ARG	NE-CZ-NH2	6.48	123.54	120.30
1	C	293	ARG	NE-CZ-NH2	6.46	123.53	120.30
1	G	218	ARG	NE-CZ-NH1	6.36	123.48	120.30
1	D	343	ARG	CG-CD-NE	6.35	125.13	111.80
1	E	433	ARG	NE-CZ-NH1	-6.34	117.13	120.30
1	G	124	ASP	CB-CG-OD2	-6.25	112.68	118.30
1	A	433	ARG	NE-CZ-NH1	-6.16	117.22	120.30
1	H	218	ARG	NE-CZ-NH1	6.10	123.35	120.30
1	G	433	ARG	NE-CZ-NH1	-6.05	117.27	120.30
1	A	218	ARG	NE-CZ-NH2	6.00	123.30	120.30
1	C	437	ASP	CB-CG-OD1	5.92	123.63	118.30
1	F	451	LYS	CD-CE-NZ	5.87	125.20	111.70
1	D	443	ARG	CG-CD-NE	5.84	124.06	111.80
1	B	218	ARG	NE-CZ-NH2	5.80	123.20	120.30
1	G	439	SER	N-CA-C	-5.74	95.49	111.00
1	A	433	ARG	NE-CZ-NH2	5.74	123.17	120.30
1	D	218	ARG	NE-CZ-NH1	5.72	123.16	120.30
1	D	343	ARG	NE-CZ-NH2	-5.72	117.44	120.30
1	E	437	ASP	CB-CG-OD1	5.68	123.41	118.30
1	H	433	ARG	CB-CA-C	-5.66	99.07	110.40
1	E	433	ARG	NE-CZ-NH2	5.58	123.09	120.30
1	D	47	ARG	NE-CZ-NH1	-5.57	117.52	120.30
1	D	433	ARG	CB-CA-C	-5.55	99.29	110.40
1	G	137	ASP	CB-CG-OD2	5.46	123.21	118.30
1	G	383	LYS	CD-CE-NZ	5.40	124.13	111.70
1	E	218	ARG	NE-CZ-NH2	5.38	122.99	120.30
1	F	433	ARG	CB-CA-C	-5.34	99.73	110.40
1	G	433	ARG	NE-CZ-NH2	5.28	122.94	120.30
1	F	218	ARG	NE-CZ-NH1	5.25	122.93	120.30
1	F	68	LEU	CB-CG-CD1	5.21	119.86	111.00
1	G	47	ARG	CD-NE-CZ	5.20	130.88	123.60
1	D	158	TYR	CA-CB-CG	5.16	123.21	113.40
1	A	451	LYS	CD-CE-NZ	5.12	123.48	111.70

*Continued on next page...*

*Continued from previous page...*

Mol	Chain	Res	Type	Atoms	Z	Observed(°)	Ideal(°)
1	H	443	ARG	CB-CG-CD	5.10	124.86	111.60
1	H	451	LYS	CD-CE-NZ	5.10	123.42	111.70
1	B	218	ARG	CB-CG-CD	5.08	124.80	111.60
1	F	343	ARG	CG-CD-NE	5.07	122.45	111.80
1	F	220	LYS	CA-CB-CG	5.02	124.44	113.40

There are no chirality outliers.

There are no planarity outliers.

## 5.2 Too-close contacts

In the following table, the Non-H and H(model) columns list the number of non-hydrogen atoms and hydrogen atoms in the chain respectively. The H(added) column lists the number of hydrogen atoms added and optimized by MolProbity. The Clashes column lists the number of clashes within the asymmetric unit, whereas Symm-Clashes lists symmetry related clashes.

Mol	Chain	Non-H	H(model)	H(added)	Clashes	Symm-Clashes
1	A	3979	0	4024	17	0
1	B	3902	0	3961	11	0
1	C	3877	0	3939	13	0
1	D	3901	0	3956	15	0
1	E	3950	0	4004	18	0
1	F	3943	0	3983	22	0
1	G	3949	0	4004	18	0
1	H	3922	0	3965	17	0
2	A	44	0	26	0	0
2	B	44	0	26	0	0
2	C	44	0	26	0	0
2	D	44	0	26	0	0
2	E	44	0	26	0	0
2	F	44	0	26	1	0
2	G	44	0	26	0	0
2	H	44	0	26	0	0
3	A	26	0	19	0	0
3	B	26	0	19	2	0
3	C	26	0	19	0	0
3	D	26	0	19	1	0
3	E	26	0	19	0	0
3	F	26	0	19	3	0
3	G	26	0	19	0	0
3	H	26	0	19	1	0

*Continued on next page...*

*Continued from previous page...*

Mol	Chain	Non-H	H(model)	H(added)	Clashes	Symm-Clashes
4	A	1	0	0	0	0
4	B	2	0	0	0	0
4	C	1	0	0	0	0
4	D	1	0	0	0	0
4	E	2	0	0	0	0
4	F	1	0	0	0	0
4	G	2	0	0	0	0
4	H	1	0	0	0	0
5	A	20	0	0	0	0
5	B	10	0	0	0	0
5	C	20	0	0	0	0
5	D	15	0	0	0	0
5	E	10	0	0	0	0
5	F	10	0	0	0	0
5	G	15	0	0	0	0
5	H	10	0	0	0	0
6	A	22	0	30	0	0
6	B	22	0	30	0	0
6	H	22	0	30	0	0
7	D	19	0	26	0	0
7	F	19	0	26	0	0
8	F	19	0	13	1	0
8	H	19	0	13	0	0
9	G	14	0	20	0	0
10	A	159	0	0	0	0
10	B	85	0	0	0	0
10	C	130	0	0	0	0
10	D	104	0	0	0	0
10	E	148	0	0	0	0
10	F	91	0	0	0	0
10	G	123	0	0	0	0
10	H	101	0	0	0	0
All	All	33201	0	32384	119	0

The all-atom clashscore is defined as the number of clashes found per 1000 atoms (including hydrogen atoms). The all-atom clashscore for this structure is 2.

All (119) close contacts within the same asymmetric unit are listed below, sorted by their clash magnitude.

Atom-1	Atom-2	Interatomic distance (Å)	Clash overlap (Å)
1:H:118:THR:OG1	1:H:197:ARG:NH2	2.09	0.85

*Continued on next page...*

*Continued from previous page...*

Atom-1	Atom-2	Interatomic distance (Å)	Clash overlap (Å)
1:A:118:THR:OG1	1:A:197:ARG:NH1	2.09	0.84
1:E:2:LYS:HE2	1:E:115:ASP:OD2	1.81	0.79
1:E:35[B]:ARG:HG2	1:E:38[B]:ARG:HH21	1.52	0.74
1:E:47:ARG:NH1	1:E:130:GLY:O	2.21	0.73
1:A:47:ARG:NH1	1:A:130:GLY:O	2.21	0.73
1:B:47:ARG:NH1	1:B:130:GLY:O	2.21	0.73
1:C:47:ARG:NH1	1:C:130:GLY:O	2.21	0.72
1:E:35[B]:ARG:HG2	1:E:38[B]:ARG:NH2	2.04	0.71
1:G:48:ILE:HB	1:G:72:ILE:HD13	1.75	0.68
1:H:48:ILE:HB	1:H:72:ILE:HD13	1.75	0.68
1:G:47:ARG:NH1	1:G:130:GLY:O	2.27	0.66
1:F:442:THR:HG23	1:F:444:PHE:CE2	2.33	0.64
1:A:71[A]:GLU:OE1	1:A:71[A]:GLU:HA	1.99	0.61
1:E:93:LYS:HE3	1:E:95:ILE:HD11	1.83	0.61
1:A:107:GLU:HG3	1:A:185:LYS:HE3	1.84	0.59
1:G:137:ASP:OD1	1:G:211:GLU:HG2	2.03	0.59
1:D:158:TYR:CZ	1:D:160:LYS:HB2	2.38	0.58
1:F:442:THR:HG23	1:F:444:PHE:HE2	1.68	0.58
1:F:274:LEU:CD2	1:F:336:VAL:HG12	2.34	0.58
1:G:120:ARG:HD2	1:G:125:LYS:HG3	1.85	0.57
1:G:439:SER:O	1:G:440:LYS:CB	2.53	0.56
1:B:212:THR:HG21	3:B:502:SAH:HG1	1.87	0.56
1:A:172:ASN:HB3	1:F:370:PRO:HG2	1.87	0.56
1:H:92:LYS:O	1:H:92:LYS:HD3	2.06	0.56
1:D:158:TYR:CE2	1:D:160:LYS:HB2	2.42	0.55
1:E:31:VAL:O	1:E:35[B]:ARG:HG3	2.07	0.54
1:H:356[B]:HIS:HA	1:H:401:LEU:HD21	1.90	0.53
1:F:351:ILE:HG22	1:F:361:ILE:HD13	1.90	0.53
1:A:351:ILE:HG22	1:A:361:ILE:HD13	1.91	0.53
1:G:274:LEU:CD2	1:G:336[B]:VAL:HG12	2.38	0.52
1:F:274:LEU:HD22	1:F:336:VAL:HG12	1.92	0.52
1:H:351:ILE:HG22	1:H:361:ILE:HD13	1.92	0.51
1:D:351:ILE:HG22	1:D:361:ILE:HD13	1.92	0.51
1:G:168:GLU:HG3	1:G:181:LYS:HE2	1.93	0.51
1:A:299:ILE:HD13	1:B:472:LEU:HD21	1.91	0.51
1:C:351:ILE:HG22	1:C:361:ILE:HD13	1.92	0.51
1:E:351:ILE:HG22	1:E:361:ILE:HD13	1.92	0.51
1:G:351:ILE:HG22	1:G:361:ILE:HD13	1.92	0.51
1:C:472:LEU:HD21	1:D:299:ILE:HD13	1.93	0.51
1:F:64:THR:O	1:F:68:LEU:HD13	2.11	0.50
1:D:37:TYR:HB2	1:D:68:LEU:HD22	1.94	0.50

*Continued on next page...*

*Continued from previous page...*

Atom-1	Atom-2	Interatomic distance (Å)	Clash overlap (Å)
1:G:299:ILE:HD13	1:H:472:LEU:HD21	1.93	0.50
1:B:351:ILE:HG22	1:B:361:ILE:HD13	1.92	0.50
1:B:37:TYR:HB2	1:B:68:LEU:HD22	1.94	0.50
1:C:37:TYR:HB2	1:C:68:LEU:HD22	1.93	0.50
1:C:299:ILE:HD13	1:D:472:LEU:HD21	1.94	0.49
1:F:174:LYS:N	1:F:174:LYS:HD2	2.27	0.49
1:A:323[B]:GLU:HA	1:A:323[B]:GLU:OE1	2.13	0.49
1:A:37:TYR:HB2	1:A:68:LEU:HD22	1.94	0.49
1:G:128:ILE:HD12	1:G:128:ILE:O	2.12	0.49
1:G:274:LEU:HD23	1:G:336[B]:VAL:HG12	1.95	0.49
1:C:169:LEU:N	1:C:169:LEU:HD12	2.28	0.49
1:G:107:GLU:HG3	1:G:185:LYS:HE2	1.94	0.49
1:C:137:ASP:OD1	1:C:212:THR:CG2	2.61	0.49
1:H:37:TYR:HB2	1:H:68:LEU:HD22	1.93	0.49
1:A:375:ILE:HD12	1:D:18:GLN:NE2	2.28	0.49
1:E:37:TYR:HB2	1:E:68:LEU:HD22	1.94	0.48
1:G:37:TYR:HB2	1:G:68:LEU:HD22	1.94	0.48
1:E:137:ASP:OD1	1:E:212:THR:CG2	2.61	0.48
1:A:137:ASP:OD1	1:A:212:THR:CG2	2.61	0.48
1:B:137:ASP:OD1	1:B:212:THR:CG2	2.61	0.48
1:G:472:LEU:HD21	1:H:299:ILE:HD13	1.96	0.48
1:E:299:ILE:HD13	1:F:472:LEU:HD21	1.95	0.47
1:B:137:ASP:OD1	3:B:502:SAH:HG1	2.15	0.47
3:F:502[A]:SAH:HN1	3:F:502[A]:SAH:HG1	1.42	0.46
1:C:397:CYS:HG	1:C:406:CYS:HG	1.64	0.46
1:H:354[B]:ILE:HG12	1:H:354[B]:ILE:O	2.16	0.46
1:C:32:GLU:HG2	1:C:460:LEU:HD22	1.98	0.46
1:H:71:GLU:C	1:H:72:ILE:HG12	2.36	0.46
1:A:472:LEU:HD21	1:B:299:ILE:HD13	1.97	0.46
1:H:58:THR:OG1	3:H:502[A]:SAH:H2	2.17	0.45
1:E:1:TYR:CZ	1:E:120:ARG:HB2	2.51	0.45
1:G:71:GLU:C	1:G:72:ILE:HG12	2.36	0.45
1:E:239:VAL:HG22	1:F:494:ARG:CZ	2.46	0.45
1:A:172:ASN:CB	1:F:370:PRO:HG2	2.47	0.45
1:F:356[B]:HIS:HA	1:F:401:LEU:HD21	1.99	0.44
1:F:274:LEU:HD23	1:F:336:VAL:HG12	1.99	0.44
1:F:441:ASN:O	1:F:443:ARG:N	2.50	0.44
1:F:32:GLU:HG2	1:F:460:LEU:HD22	1.99	0.43
1:E:32:GLU:HG2	1:E:460:LEU:HD22	2.00	0.43
1:H:206:TYR:CD2	1:H:433:ARG:HG2	2.53	0.43
1:F:239:VAL:HG21	1:F:495:TYR:CE1	2.53	0.43

*Continued on next page...*

*Continued from previous page...*

Atom-1	Atom-2	Interatomic distance (Å)	Clash overlap (Å)
1:G:439:SER:O	1:G:440:LYS:HB3	2.17	0.43
1:C:253:SER:HB2	1:C:403:ASN:HB2	2.01	0.43
1:D:239:VAL:HG21	1:D:495:TYR:CE1	2.54	0.43
1:B:253:SER:HB2	1:B:403:ASN:HB2	2.01	0.43
1:H:253:SER:HB2	1:H:403:ASN:HB2	2.01	0.43
1:A:375:ILE:HD12	1:D:18:GLN:CD	2.39	0.42
1:E:253:SER:HB2	1:E:403:ASN:HB2	2.01	0.42
1:D:206:TYR:CD2	1:D:433:ARG:HG2	2.55	0.42
1:C:239:VAL:HG21	1:C:495:TYR:CE1	2.55	0.42
1:G:239:VAL:HG22	1:H:494:ARG:CZ	2.50	0.42
1:F:58:THR:OG1	3:F:502[A]:SAH:H2	2.20	0.42
1:E:93:LYS:CE	1:E:95:ILE:HD11	2.49	0.41
1:F:357[A]:PHE:N	3:F:502[A]:SAH:OXT	2.53	0.41
1:C:216:VAL:HG12	1:C:220:LYS:HE2	2.02	0.41
1:D:52:LEU:O	1:D:53:HIS:C	2.59	0.41
1:D:32:GLU:HG2	1:D:460:LEU:HD22	2.03	0.41
1:E:239:VAL:HG21	1:E:495:TYR:CE1	2.55	0.41
1:A:253:SER:HB2	1:A:403:ASN:HB2	2.02	0.41
1:D:253:SER:HB2	1:D:403:ASN:HB2	2.02	0.41
1:H:52:LEU:O	1:H:53:HIS:C	2.59	0.41
1:F:206:TYR:CD2	1:F:433:ARG:HG2	2.56	0.41
1:A:52:LEU:O	1:A:53:HIS:C	2.59	0.41
1:F:253:SER:HB2	1:F:403:ASN:HB2	2.01	0.41
1:G:469:LEU:HA	1:G:469:LEU:HD12	1.92	0.41
1:H:239:VAL:HG21	1:H:495:TYR:CE1	2.56	0.41
1:B:52:LEU:O	1:B:53:HIS:C	2.59	0.41
1:D:357:PHE:N	3:D:502:SAH:OXT	2.52	0.40
2:F:501:NAD:C4N	8:F:503[B]:ADN:H3'	2.51	0.40
1:A:338:THR:O	1:A:342:MET:HG3	2.21	0.40
1:E:52:LEU:O	1:E:53:HIS:C	2.59	0.40
1:F:52:LEU:O	1:F:53:HIS:C	2.59	0.40
1:B:338:THR:O	1:B:342:MET:HG3	2.21	0.40
1:D:101:TRP:O	1:D:104:GLU:HG3	2.22	0.40
1:E:494:ARG:CZ	1:F:239:VAL:HG22	2.51	0.40
1:C:52:LEU:O	1:C:53:HIS:C	2.59	0.40
1:H:270:LYS:HD2	1:H:293:ARG:NH2	2.37	0.40

There are no symmetry-related clashes.

## 5.3 Torsion angles

### 5.3.1 Protein backbone

In the following table, the Percentiles column shows the percent Ramachandran outliers of the chain as a percentile score with respect to all X-ray entries followed by that with respect to entries of similar resolution.

The Analysed column shows the number of residues for which the backbone conformation was analysed, and the total number of residues.

Mol	Chain	Analysed	Favoured	Allowed	Outliers	Percentiles	
1	A	500/498 (100%)	486 (97%)	13 (3%)	1 (0%)	47	64
1	B	492/498 (99%)	477 (97%)	14 (3%)	1 (0%)	47	64
1	C	487/498 (98%)	473 (97%)	13 (3%)	1 (0%)	47	64
1	D	492/498 (99%)	478 (97%)	13 (3%)	1 (0%)	47	64
1	E	495/498 (99%)	480 (97%)	14 (3%)	1 (0%)	47	64
1	F	497/498 (100%)	484 (97%)	10 (2%)	3 (1%)	25	37
1	G	497/498 (100%)	482 (97%)	13 (3%)	2 (0%)	34	48
1	H	492/498 (99%)	479 (97%)	12 (2%)	1 (0%)	47	64
All	All	3952/3984 (99%)	3839 (97%)	102 (3%)	11 (0%)	41	56

All (11) Ramachandran outliers are listed below:

Mol	Chain	Res	Type
1	G	440	LYS
1	F	442	THR
1	A	53	HIS
1	B	53	HIS
1	C	53	HIS
1	D	53	HIS
1	E	53	HIS
1	F	53	HIS
1	G	53	HIS
1	H	53	HIS
1	F	441	ASN

### 5.3.2 Protein sidechains

In the following table, the Percentiles column shows the percent sidechain outliers of the chain as a percentile score with respect to all X-ray entries followed by that with respect to entries of similar resolution.

The Analysed column shows the number of residues for which the sidechain conformation was analysed, and the total number of residues.

Mol	Chain	Analysed	Rotameric	Outliers	Percentiles	
1	A	440/435 (101%)	437 (99%)	3 (1%)	84	91
1	B	432/435 (99%)	431 (100%)	1 (0%)	93	97
1	C	429/435 (99%)	428 (100%)	1 (0%)	93	97
1	D	432/435 (99%)	429 (99%)	3 (1%)	84	91
1	E	436/435 (100%)	433 (99%)	3 (1%)	84	91
1	F	436/435 (100%)	431 (99%)	5 (1%)	73	85
1	G	437/435 (100%)	435 (100%)	2 (0%)	88	94
1	H	433/435 (100%)	429 (99%)	4 (1%)	78	87
All	All	3475/3480 (100%)	3453 (99%)	22 (1%)	86	92

All (22) residues with a non-rotameric sidechain are listed below:

Mol	Chain	Res	Type
1	A	6	ARG
1	A	378	LYS
1	A	434	GLU
1	B	323	GLU
1	C	218	ARG
1	D	158	TYR
1	D	212	THR
1	D	379	GLN
1	E	35[A]	ARG
1	E	35[B]	ARG
1	E	174	LYS
1	F	68	LEU
1	F	127	LYS
1	F	174	LYS
1	F	212	THR
1	F	220	LYS
1	G	38	ARG
1	G	373	LYS
1	H	212	THR
1	H	323	GLU
1	H	398	LYS
1	H	443	ARG

Some sidechains can be flipped to improve hydrogen bonding and reduce clashes. There are no such sidechains identified.

### 5.3.3 RNA ⓘ

There are no RNA molecules in this entry.

## 5.4 Non-standard residues in protein, DNA, RNA chains ⓘ

There are no non-standard protein/DNA/RNA residues in this entry.

## 5.5 Carbohydrates ⓘ

There are no monosaccharides in this entry.

## 5.6 Ligand geometry ⓘ

Of 58 ligands modelled in this entry, 11 are monoatomic - leaving 47 for Mogul analysis.

In the following table, the Counts columns list the number of bonds (or angles) for which Mogul statistics could be retrieved, the number of bonds (or angles) that are observed in the model and the number of bonds (or angles) that are defined in the Chemical Component Dictionary. The Link column lists molecule types, if any, to which the group is linked. The Z score for a bond length (or angle) is the number of standard deviations the observed value is removed from the expected value. A bond length (or angle) with  $|Z| > 2$  is considered an outlier worth inspection. RMSZ is the root-mean-square of all Z scores of the bond lengths (or angles).

Mol	Type	Chain	Res	Link	Bond lengths			Bond angles		
					Counts	RMSZ	$\# Z  > 2$	Counts	RMSZ	$\# Z  > 2$
5	SO4	G	505	-	4,4,4	0.35	0	6,6,6	0.20	0
6	P33	H	507	-	21,21,21	0.52	0	20,20,20	0.31	0
5	SO4	C	507	-	4,4,4	0.35	0	6,6,6	0.13	0
8	ADN	H	503[B]	-	18,21,21	0.97	1 (5%)	18,31,31	1.53	3 (16%)
5	SO4	A	504	-	4,4,4	0.34	0	6,6,6	0.14	0
5	SO4	E	505	-	4,4,4	0.36	0	6,6,6	0.09	0
5	SO4	A	506	-	4,4,4	0.36	0	6,6,6	0.17	0
3	SAH	F	502[A]	-	21,28,28	1.08	2 (9%)	20,40,40	1.58	4 (20%)
5	SO4	G	506	-	4,4,4	0.38	0	6,6,6	0.23	0
7	P6G	D	507	-	18,18,18	0.53	0	17,17,17	0.29	0
3	SAH	G	502	-	21,28,28	1.05	1 (4%)	20,40,40	1.52	4 (20%)
5	SO4	D	504	-	4,4,4	0.39	0	6,6,6	0.11	0
5	SO4	H	506	-	4,4,4	0.34	0	6,6,6	0.09	0
5	SO4	G	507	-	4,4,4	0.39	0	6,6,6	0.10	0
3	SAH	B	502	-	21,28,28	1.10	1 (4%)	20,40,40	1.61	5 (25%)
5	SO4	B	506	-	4,4,4	0.37	0	6,6,6	0.08	0
5	SO4	D	505	-	4,4,4	0.37	0	6,6,6	0.20	0

Mol	Type	Chain	Res	Link	Bond lengths			Bond angles		
					Counts	RMSZ	# Z  > 2	Counts	RMSZ	# Z  > 2
5	SO4	C	505	-	4,4,4	0.37	0	6,6,6	0.14	0
5	SO4	D	506	-	4,4,4	0.35	0	6,6,6	0.10	0
5	SO4	B	505	-	4,4,4	0.33	0	6,6,6	0.18	0
5	SO4	H	505	-	4,4,4	0.36	0	6,6,6	0.09	0
3	SAH	D	502	-	21,28,28	1.14	2 (9%)	20,40,40	1.74	5 (25%)
6	P33	B	507	-	21,21,21	0.55	0	20,20,20	0.26	0
2	NAD	F	501	-	42,48,48	0.87	3 (7%)	50,73,73	1.33	6 (12%)
3	SAH	C	502	-	21,28,28	0.93	1 (4%)	20,40,40	1.50	5 (25%)
8	ADN	F	503[B]	-	18,21,21	1.06	2 (11%)	18,31,31	1.58	2 (11%)
5	SO4	C	506	-	4,4,4	0.35	0	6,6,6	0.10	0
2	NAD	A	501	-	42,48,48	0.81	2 (4%)	50,73,73	1.16	3 (6%)
2	NAD	E	501	-	42,48,48	0.88	3 (7%)	50,73,73	1.18	4 (8%)
5	SO4	C	504	-	4,4,4	0.35	0	6,6,6	0.11	0
5	SO4	F	505	-	4,4,4	0.37	0	6,6,6	0.07	0
2	NAD	H	501	-	42,48,48	0.81	2 (4%)	50,73,73	1.25	6 (12%)
3	SAH	E	502	-	21,28,28	0.99	1 (4%)	20,40,40	1.49	4 (20%)
2	NAD	B	501	-	42,48,48	0.82	2 (4%)	50,73,73	1.25	5 (10%)
5	SO4	E	506	-	4,4,4	0.39	0	6,6,6	0.14	0
7	P6G	F	507	-	18,18,18	0.53	0	17,17,17	0.25	0
3	SAH	A	502	-	21,28,28	1.01	1 (4%)	20,40,40	1.62	5 (25%)
2	NAD	D	501	-	42,48,48	0.81	1 (2%)	50,73,73	1.19	4 (8%)
5	SO4	A	507	-	4,4,4	0.34	0	6,6,6	0.26	0
9	PEG	G	509	-	6,6,6	0.52	0	5,5,5	0.26	0
2	NAD	G	501	-	42,48,48	0.80	2 (4%)	50,73,73	1.26	5 (10%)
5	SO4	F	506	-	4,4,4	0.34	0	6,6,6	0.14	0
6	P33	A	508	-	21,21,21	0.58	0	20,20,20	0.24	0
3	SAH	H	502[A]	-	21,28,28	1.03	1 (4%)	20,40,40	1.57	3 (15%)
2	NAD	C	501	-	42,48,48	0.92	3 (7%)	50,73,73	1.32	8 (16%)
5	SO4	A	505	-	4,4,4	0.37	0	6,6,6	0.14	0
9	PEG	G	508	-	6,6,6	0.52	0	5,5,5	0.24	0

In the following table, the Chirals column lists the number of chiral outliers, the number of chiral centers analysed, the number of these observed in the model and the number defined in the Chemical Component Dictionary. Similar counts are reported in the Torsion and Rings columns. '-' means no outliers of that kind were identified.

Mol	Type	Chain	Res	Link	Chirals	Torsions	Rings
6	P33	H	507	-	-	9/19/19/19	-
8	ADN	H	503[B]	-	-	1/2/22/22	0/3/3/3

*Continued on next page...*

Continued from previous page...

Mol	Type	Chain	Res	Link	Chirals	Torsions	Rings
3	SAH	F	502[A]	-	-	6/7/31/31	0/3/3/3
9	PEG	G	508	-	-	1/4/4/4	-
7	P6G	D	507	-	-	7/16/16/16	-
3	SAH	G	502	-	-	3/7/31/31	0/3/3/3
3	SAH	B	502	-	-	1/7/31/31	0/3/3/3
3	SAH	D	502	-	-	6/7/31/31	0/3/3/3
6	P33	B	507	-	-	9/19/19/19	-
2	NAD	F	501	-	-	5/26/62/62	0/5/5/5
3	SAH	C	502	-	-	2/7/31/31	0/3/3/3
8	ADN	F	503[B]	-	-	2/2/22/22	0/3/3/3
2	NAD	A	501	-	-	5/26/62/62	0/5/5/5
2	NAD	E	501	-	-	5/26/62/62	0/5/5/5
2	NAD	H	501	-	-	5/26/62/62	0/5/5/5
3	SAH	E	502	-	-	2/7/31/31	0/3/3/3
2	NAD	B	501	-	-	6/26/62/62	0/5/5/5
7	P6G	F	507	-	-	7/16/16/16	-
3	SAH	A	502	-	-	2/7/31/31	0/3/3/3
2	NAD	D	501	-	-	5/26/62/62	0/5/5/5
9	PEG	G	509	-	-	3/4/4/4	-
2	NAD	G	501	-	-	5/26/62/62	0/5/5/5
6	P33	A	508	-	-	8/19/19/19	-
3	SAH	H	502[A]	-	-	4/7/31/31	0/3/3/3
2	NAD	C	501	-	-	5/26/62/62	0/5/5/5

All (31) bond length outliers are listed below:

Mol	Chain	Res	Type	Atoms	Z	Observed(Å)	Ideal(Å)
2	C	501	NAD	O4D-C1D	2.61	1.44	1.41
2	F	501	NAD	O4D-C1D	2.51	1.44	1.41
3	G	502	SAH	C5-C4	2.41	1.47	1.40
3	D	502	SAH	O4'-C1'	2.40	1.44	1.41
2	G	501	NAD	C2A-N3A	2.38	1.35	1.32
8	F	503[B]	ADN	C5-C4	2.37	1.47	1.40
3	B	502	SAH	C5-C4	2.36	1.47	1.40
3	F	502[A]	SAH	C5-C4	2.31	1.47	1.40
3	H	502[A]	SAH	C5-C4	2.29	1.47	1.40
2	C	501	NAD	C2A-N3A	2.29	1.35	1.32

Continued on next page...

*Continued from previous page...*

Mol	Chain	Res	Type	Atoms	Z	Observed(Å)	Ideal(Å)
2	A	501	NAD	C5A-C4A	2.27	1.46	1.40
3	E	502	SAH	C5-C4	2.26	1.46	1.40
3	D	502	SAH	C5-C4	2.25	1.46	1.40
2	B	501	NAD	C5A-C4A	2.22	1.46	1.40
2	G	501	NAD	C5A-C4A	2.21	1.46	1.40
2	F	501	NAD	C5A-C4A	2.21	1.46	1.40
3	A	502	SAH	C5-C4	2.18	1.46	1.40
2	D	501	NAD	O4D-C1D	2.18	1.44	1.41
2	H	501	NAD	C5A-C4A	2.17	1.46	1.40
2	B	501	NAD	C2A-N3A	2.17	1.35	1.32
8	H	503[B]	ADN	C5-C4	2.15	1.46	1.40
2	E	501	NAD	C5A-C4A	2.14	1.46	1.40
2	H	501	NAD	C2A-N3A	2.12	1.35	1.32
2	F	501	NAD	C2A-N3A	2.12	1.35	1.32
3	F	502[A]	SAH	O4'-C1'	2.10	1.44	1.41
2	E	501	NAD	O4B-C1B	2.10	1.44	1.41
2	C	501	NAD	C5A-C4A	2.06	1.46	1.40
3	C	502	SAH	C5-C4	2.02	1.46	1.40
2	E	501	NAD	C2A-N3A	2.01	1.35	1.32
8	F	503[B]	ADN	O4'-C1'	2.01	1.43	1.41
2	A	501	NAD	C2A-N3A	2.01	1.35	1.32

All (81) bond angle outliers are listed below:

Mol	Chain	Res	Type	Atoms	Z	Observed(°)	Ideal(°)
2	F	501	NAD	N3A-C2A-N1A	-4.11	122.25	128.68
2	D	501	NAD	N3A-C2A-N1A	-3.93	122.54	128.68
2	A	501	NAD	N3A-C2A-N1A	-3.87	122.62	128.68
2	B	501	NAD	PN-O3-PA	-3.78	119.86	132.83
3	E	502	SAH	N3-C2-N1	-3.69	122.90	128.68
3	C	502	SAH	N3-C2-N1	-3.64	122.98	128.68
2	H	501	NAD	N3A-C2A-N1A	-3.64	122.98	128.68
3	A	502	SAH	N3-C2-N1	-3.61	123.04	128.68
2	H	501	NAD	PN-O3-PA	-3.58	120.54	132.83
2	F	501	NAD	PN-O3-PA	-3.58	120.56	132.83
2	G	501	NAD	N3A-C2A-N1A	-3.57	123.10	128.68
2	E	501	NAD	N3A-C2A-N1A	-3.57	123.11	128.68
2	G	501	NAD	PN-O3-PA	-3.56	120.61	132.83
2	B	501	NAD	N3A-C2A-N1A	-3.52	123.17	128.68
3	B	502	SAH	N3-C2-N1	-3.51	123.19	128.68
3	G	502	SAH	N3-C2-N1	-3.50	123.20	128.68
2	C	501	NAD	C4A-C5A-N7A	-3.48	105.77	109.40

*Continued on next page...*

*Continued from previous page...*

Mol	Chain	Res	Type	Atoms	Z	Observed(°)	Ideal(°)
2	E	501	NAD	PN-O3-PA	-3.48	120.89	132.83
8	F	503[B]	ADN	N3-C2-N1	-3.47	123.25	128.68
3	D	502	SAH	O4'-C4'-C5'	3.44	117.69	108.83
3	D	502	SAH	N3-C2-N1	-3.43	123.32	128.68
2	C	501	NAD	N3A-C2A-N1A	-3.42	123.33	128.68
8	F	503[B]	ADN	C4-C5-N7	-3.34	105.92	109.40
8	H	503[B]	ADN	N3-C2-N1	-3.30	123.52	128.68
2	C	501	NAD	PN-O3-PA	-3.25	121.68	132.83
3	F	502[A]	SAH	C4-C5-N7	-3.22	106.04	109.40
8	H	503[B]	ADN	C4-C5-N7	-3.19	106.08	109.40
3	H	502[A]	SAH	C3'-C2'-C1'	3.18	105.77	100.98
3	A	502	SAH	CB-CG-SD	-3.17	106.20	113.31
2	E	501	NAD	C4A-C5A-N7A	-3.11	106.16	109.40
3	F	502[A]	SAH	N3-C2-N1	-3.11	123.81	128.68
3	H	502[A]	SAH	N3-C2-N1	-3.09	123.86	128.68
3	H	502[A]	SAH	C4-C5-N7	-3.08	106.19	109.40
3	D	502	SAH	C4-C5-N7	-3.05	106.22	109.40
2	D	501	NAD	PN-O3-PA	-2.88	122.93	132.83
3	B	502	SAH	C4-C5-N7	-2.86	106.42	109.40
3	B	502	SAH	O4'-C4'-C5'	2.83	116.11	108.83
2	F	501	NAD	C3N-C7N-N7N	2.81	121.13	117.75
2	A	501	NAD	PN-O3-PA	-2.76	123.35	132.83
3	C	502	SAH	C3'-C2'-C1'	2.72	105.08	100.98
2	H	501	NAD	C4A-C5A-N7A	-2.70	106.59	109.40
3	F	502[A]	SAH	C3'-C2'-C1'	2.69	105.02	100.98
3	D	502	SAH	C3'-C2'-C1'	2.58	104.87	100.98
3	E	502	SAH	C4-C5-N7	-2.53	106.76	109.40
2	G	501	NAD	C4A-C5A-N7A	-2.50	106.79	109.40
3	G	502	SAH	C1'-N9-C4	-2.47	122.30	126.64
3	A	502	SAH	C1'-N9-C4	-2.46	122.31	126.64
3	E	502	SAH	C3'-C2'-C1'	2.44	104.65	100.98
2	D	501	NAD	C4A-C5A-N7A	-2.44	106.86	109.40
2	D	501	NAD	C1B-N9A-C4A	-2.42	122.39	126.64
2	B	501	NAD	C6N-N1N-C2N	-2.39	119.80	121.97
3	C	502	SAH	C4-C5-N7	-2.39	106.91	109.40
2	F	501	NAD	O4B-C1B-C2B	-2.39	103.44	106.93
3	G	502	SAH	C4-C5-N7	-2.37	106.92	109.40
2	C	501	NAD	C3N-C2N-N1N	2.37	122.74	120.43
2	E	501	NAD	C1B-N9A-C4A	-2.37	122.48	126.64
2	C	501	NAD	C3N-C7N-N7N	2.35	120.57	117.75
2	C	501	NAD	O4B-C1B-C2B	-2.34	103.50	106.93
2	G	501	NAD	C3N-C7N-N7N	2.34	120.56	117.75

*Continued on next page...*

*Continued from previous page...*

Mol	Chain	Res	Type	Atoms	Z	Observed(°)	Ideal(°)
2	H	501	NAD	C3N-C7N-N7N	2.29	120.50	117.75
2	F	501	NAD	C1B-N9A-C4A	-2.29	122.62	126.64
3	A	502	SAH	C4-C5-N7	-2.28	107.03	109.40
2	B	501	NAD	C4A-C5A-N7A	-2.26	107.05	109.40
3	B	502	SAH	C3'-C2'-C1'	2.24	104.34	100.98
3	G	502	SAH	C2-N1-C6	2.22	122.55	118.75
2	F	501	NAD	C4A-C5A-N7A	-2.21	107.09	109.40
2	A	501	NAD	C4A-C5A-N7A	-2.17	107.14	109.40
3	C	502	SAH	C1'-N9-C4	-2.15	122.87	126.64
3	E	502	SAH	C2-N1-C6	2.12	122.38	118.75
2	G	501	NAD	C1B-N9A-C4A	-2.11	122.94	126.64
2	B	501	NAD	C3N-C7N-N7N	2.10	120.28	117.75
2	C	501	NAD	C6N-N1N-C2N	-2.09	120.07	121.97
2	H	501	NAD	O4B-C1B-C2B	-2.09	103.87	106.93
3	F	502[A]	SAH	O4'-C4'-C5'	2.07	114.17	108.83
3	C	502	SAH	C2-N1-C6	2.07	122.29	118.75
8	H	503[B]	ADN	C3'-C2'-C1'	2.06	104.09	100.98
3	B	502	SAH	C2-N1-C6	2.05	122.26	118.75
3	D	502	SAH	C2-N1-C6	2.04	122.25	118.75
3	A	502	SAH	C3'-C2'-C1'	2.04	104.05	100.98
2	C	501	NAD	O7N-C7N-N7N	-2.01	119.72	122.58
2	H	501	NAD	C1B-N9A-C4A	-2.00	123.13	126.64

There are no chirality outliers.

All (114) torsion outliers are listed below:

Mol	Chain	Res	Type	Atoms
3	F	502[A]	SAH	N-CA-CB-CG
3	F	502[A]	SAH	C-CA-CB-CG
3	F	502[A]	SAH	O4'-C4'-C5'-SD
3	F	502[A]	SAH	C3'-C4'-C5'-SD
3	G	502	SAH	O4'-C4'-C5'-SD
3	G	502	SAH	C3'-C4'-C5'-SD
3	D	502	SAH	C-CA-CB-CG
3	D	502	SAH	O4'-C4'-C5'-SD
3	D	502	SAH	C3'-C4'-C5'-SD
2	F	501	NAD	O4D-C1D-N1N-C2N
2	F	501	NAD	O4D-C1D-N1N-C6N
2	F	501	NAD	C2D-C1D-N1N-C2N
2	F	501	NAD	C2D-C1D-N1N-C6N
3	C	502	SAH	C3'-C4'-C5'-SD
2	A	501	NAD	O4D-C1D-N1N-C2N

*Continued on next page...*

*Continued from previous page...*

Mol	Chain	Res	Type	Atoms
2	A	501	NAD	O4D-C1D-N1N-C6N
2	A	501	NAD	C2D-C1D-N1N-C2N
2	A	501	NAD	C2D-C1D-N1N-C6N
2	E	501	NAD	O4D-C1D-N1N-C2N
2	E	501	NAD	O4D-C1D-N1N-C6N
2	E	501	NAD	C2D-C1D-N1N-C2N
2	E	501	NAD	C2D-C1D-N1N-C6N
2	H	501	NAD	O4D-C1D-N1N-C2N
2	H	501	NAD	O4D-C1D-N1N-C6N
2	H	501	NAD	C2D-C1D-N1N-C2N
2	H	501	NAD	C2D-C1D-N1N-C6N
2	B	501	NAD	O4D-C1D-N1N-C2N
2	B	501	NAD	O4D-C1D-N1N-C6N
2	B	501	NAD	C2D-C1D-N1N-C2N
2	B	501	NAD	C2D-C1D-N1N-C6N
3	A	502	SAH	O4'-C4'-C5'-SD
3	A	502	SAH	C3'-C4'-C5'-SD
2	D	501	NAD	O4D-C1D-N1N-C2N
2	D	501	NAD	O4D-C1D-N1N-C6N
2	D	501	NAD	C2D-C1D-N1N-C2N
2	D	501	NAD	C2D-C1D-N1N-C6N
2	G	501	NAD	O4D-C1D-N1N-C2N
2	G	501	NAD	O4D-C1D-N1N-C6N
2	G	501	NAD	C2D-C1D-N1N-C2N
2	G	501	NAD	C2D-C1D-N1N-C6N
3	H	502[A]	SAH	N-CA-CB-CG
3	H	502[A]	SAH	C-CA-CB-CG
2	C	501	NAD	O4D-C1D-N1N-C2N
2	C	501	NAD	O4D-C1D-N1N-C6N
2	C	501	NAD	C2D-C1D-N1N-C2N
2	C	501	NAD	C2D-C1D-N1N-C6N
8	F	503[B]	ADN	O4'-C4'-C5'-O5'
8	F	503[B]	ADN	C3'-C4'-C5'-O5'
7	D	507	P6G	O7-C8-C9-O10
6	B	507	P33	O7-C8-C9-O10
6	H	507	P33	O7-C8-C9-O10
6	B	507	P33	O16-C17-C18-O19
7	F	507	P6G	O13-C14-C15-O16
6	H	507	P33	O10-C11-C12-O13
7	F	507	P6G	O16-C17-C18-O19
6	A	508	P33	O10-C11-C12-O13
7	F	507	P6G	O4-C5-C6-O7

*Continued on next page...*

*Continued from previous page...*

Mol	Chain	Res	Type	Atoms
6	A	508	P33	O4-C5-C6-O7
6	H	507	P33	O13-C14-C15-O16
3	D	502	SAH	CA-CB-CG-SD
7	D	507	P6G	O16-C17-C18-O19
3	F	502[A]	SAH	CA-CB-CG-SD
9	G	509	PEG	O2-C3-C4-O4
6	A	508	P33	O19-C20-C21-O22
7	D	507	P6G	O4-C5-C6-O7
9	G	508	PEG	O2-C3-C4-O4
6	B	507	P33	O13-C14-C15-O16
3	B	502	SAH	CA-CB-CG-SD
6	B	507	P33	O19-C20-C21-O22
6	B	507	P33	O1-C2-C3-O4
7	F	507	P6G	O1-C2-C3-O4
6	H	507	P33	O4-C5-C6-O7
6	B	507	P33	O4-C5-C6-O7
6	B	507	P33	C14-C15-O16-C17
2	B	501	NAD	O4B-C4B-C5B-O5B
9	G	509	PEG	O1-C1-C2-O2
7	F	507	P6G	C2-C3-O4-C5
7	F	507	P6G	C11-C12-O13-C14
6	A	508	P33	C12-C11-O10-C9
6	B	507	P33	C12-C11-O10-C9
7	D	507	P6G	C9-C8-O7-C6
6	H	507	P33	C11-C12-O13-C14
6	A	508	P33	C14-C15-O16-C17
3	D	502	SAH	N-CA-CB-CG
3	E	502	SAH	C3'-C4'-C5'-SD
9	G	509	PEG	C1-C2-O2-C3
7	F	507	P6G	O10-C11-C12-O13
6	H	507	P33	C21-C20-O19-C18
3	C	502	SAH	O4'-C4'-C5'-SD
3	E	502	SAH	O4'-C4'-C5'-SD
3	H	502[A]	SAH	O4'-C4'-C5'-SD
6	A	508	P33	C11-C12-O13-C14
3	F	502[A]	SAH	CB-CG-SD-C5'
6	B	507	P33	C6-C5-O4-C3
7	D	507	P6G	C6-C5-O4-C3
3	H	502[A]	SAH	CB-CG-SD-C5'
6	H	507	P33	C2-C3-O4-C5
7	D	507	P6G	C15-C14-O13-C12
2	A	501	NAD	O4B-C4B-C5B-O5B

*Continued on next page...*

*Continued from previous page...*

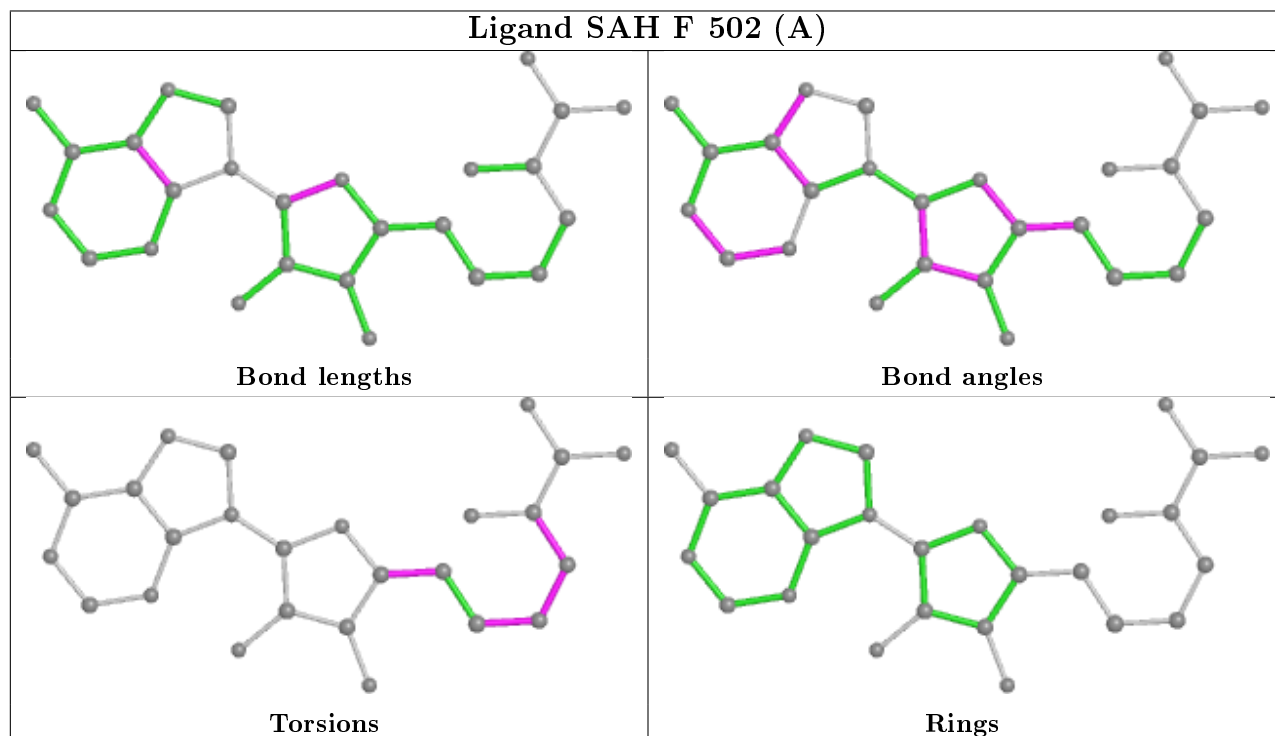
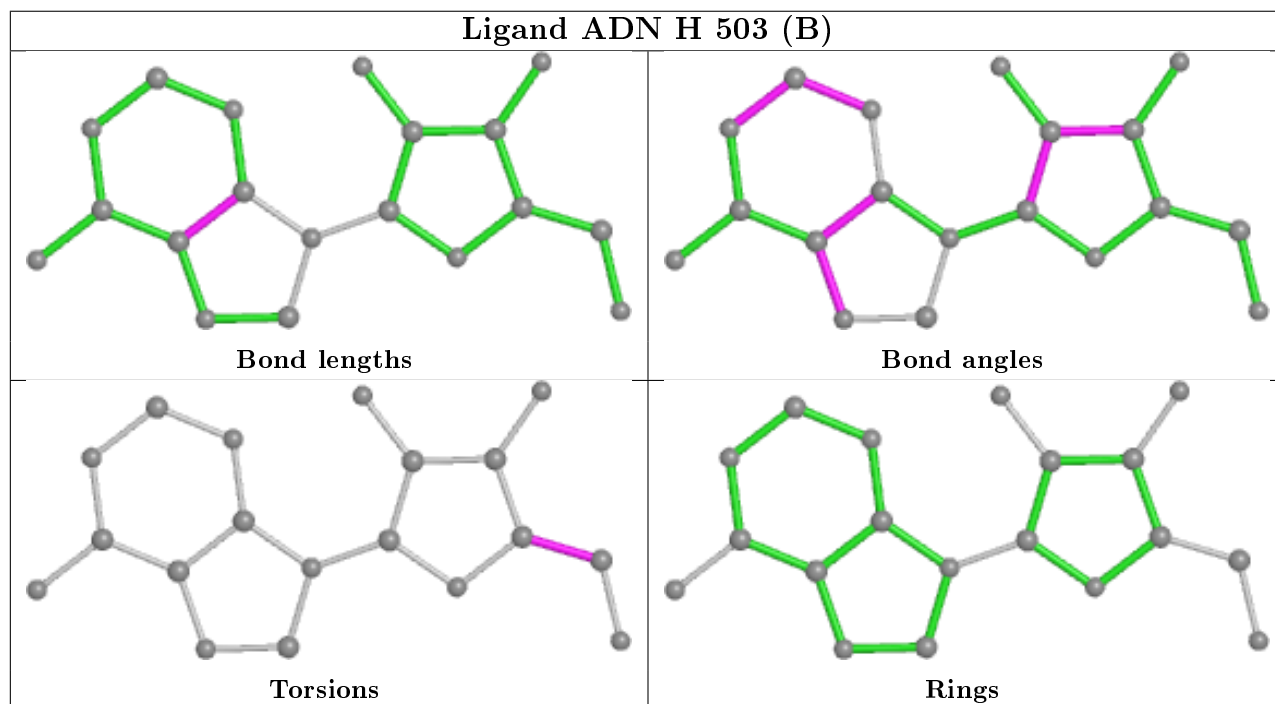
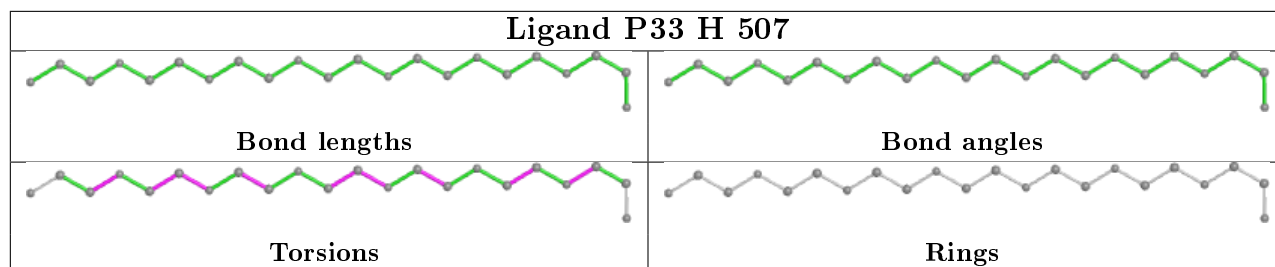
Mol	Chain	Res	Type	Atoms
8	H	503[B]	ADN	C3'-C4'-C5'-O5'
2	H	501	NAD	O4B-C4B-C5B-O5B
2	D	501	NAD	O4B-C4B-C5B-O5B
2	G	501	NAD	O4B-C4B-C5B-O5B
3	G	502	SAH	N-CA-CB-CG
6	H	507	P33	C5-C6-O7-C8
2	F	501	NAD	O4B-C4B-C5B-O5B
3	D	502	SAH	CB-CG-SD-C5'
2	E	501	NAD	O4B-C4B-C5B-O5B
2	B	501	NAD	C3B-C4B-C5B-O5B
2	C	501	NAD	O4B-C4B-C5B-O5B
6	H	507	P33	O16-C17-C18-O19
6	A	508	P33	O16-C17-C18-O19
7	D	507	P6G	C5-C6-O7-C8
6	A	508	P33	C9-C8-O7-C6

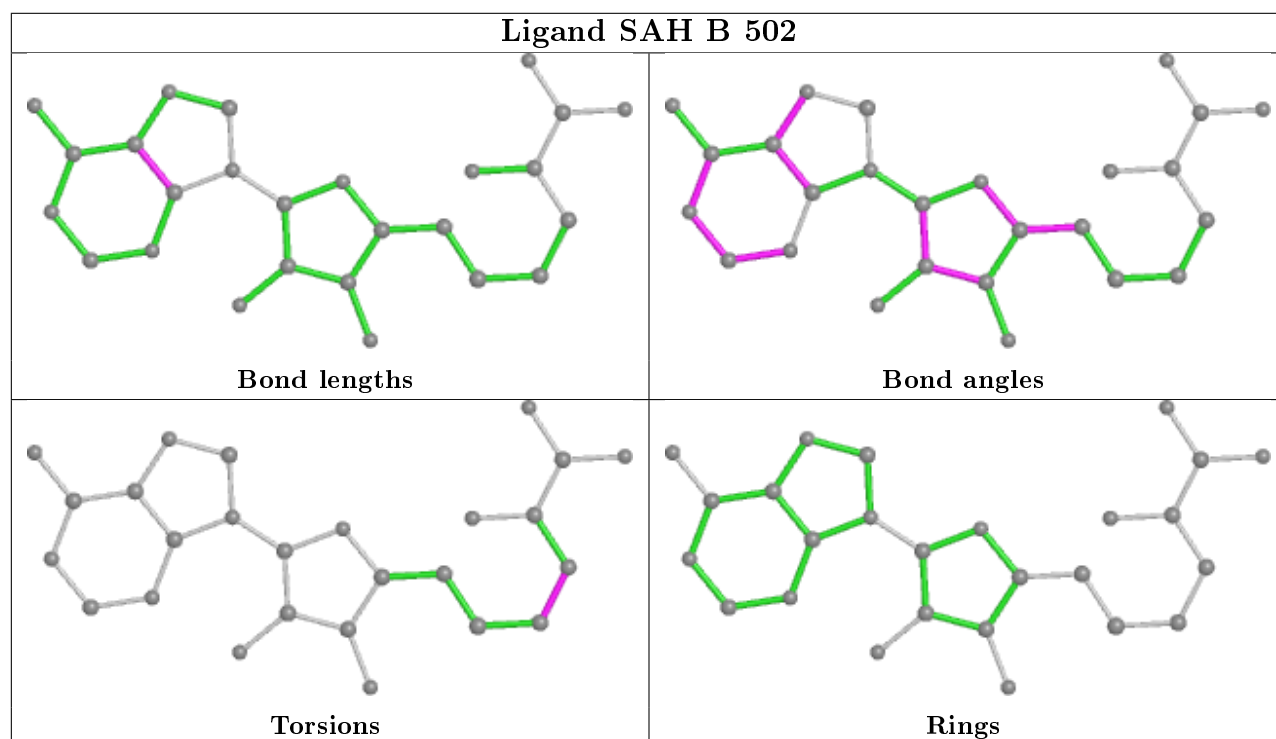
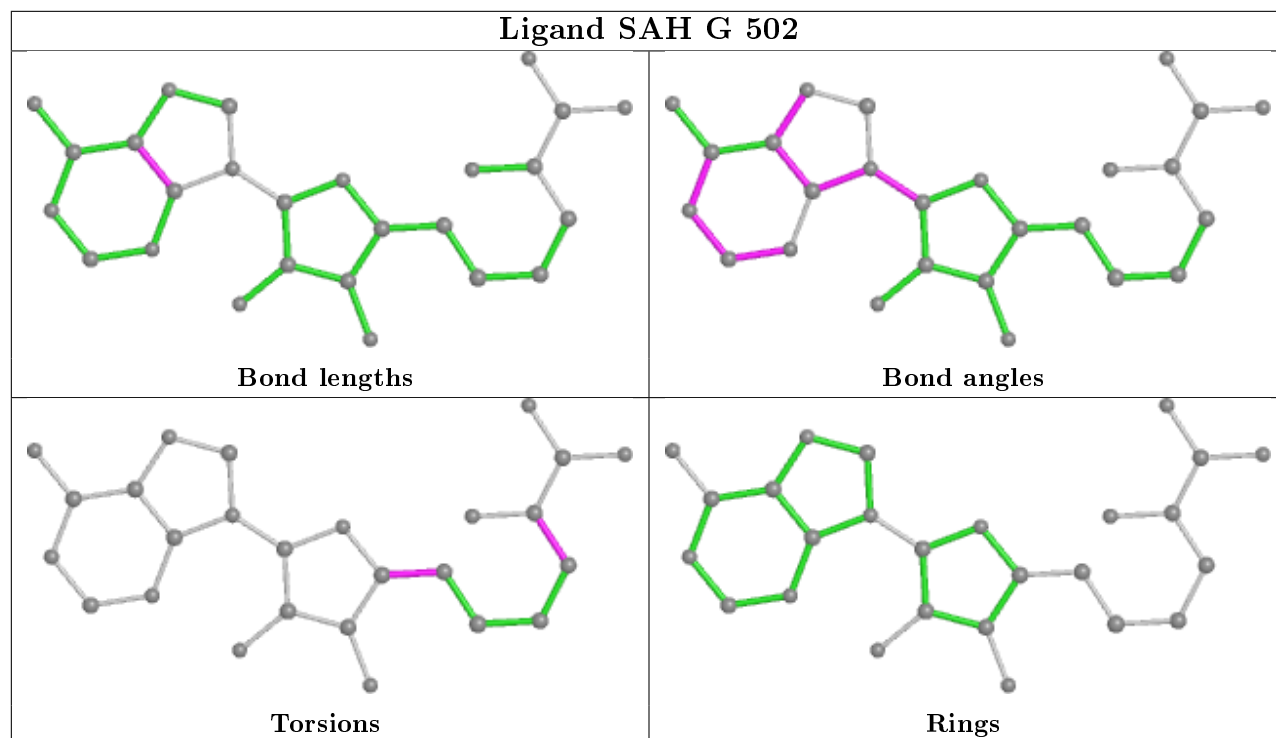
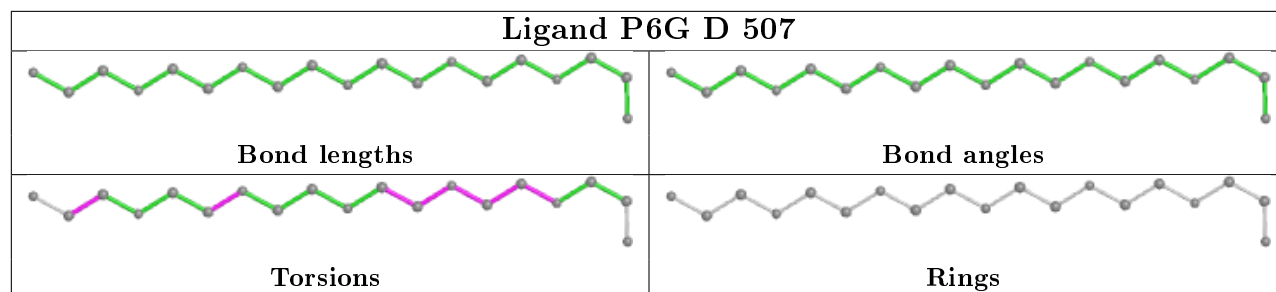
There are no ring outliers.

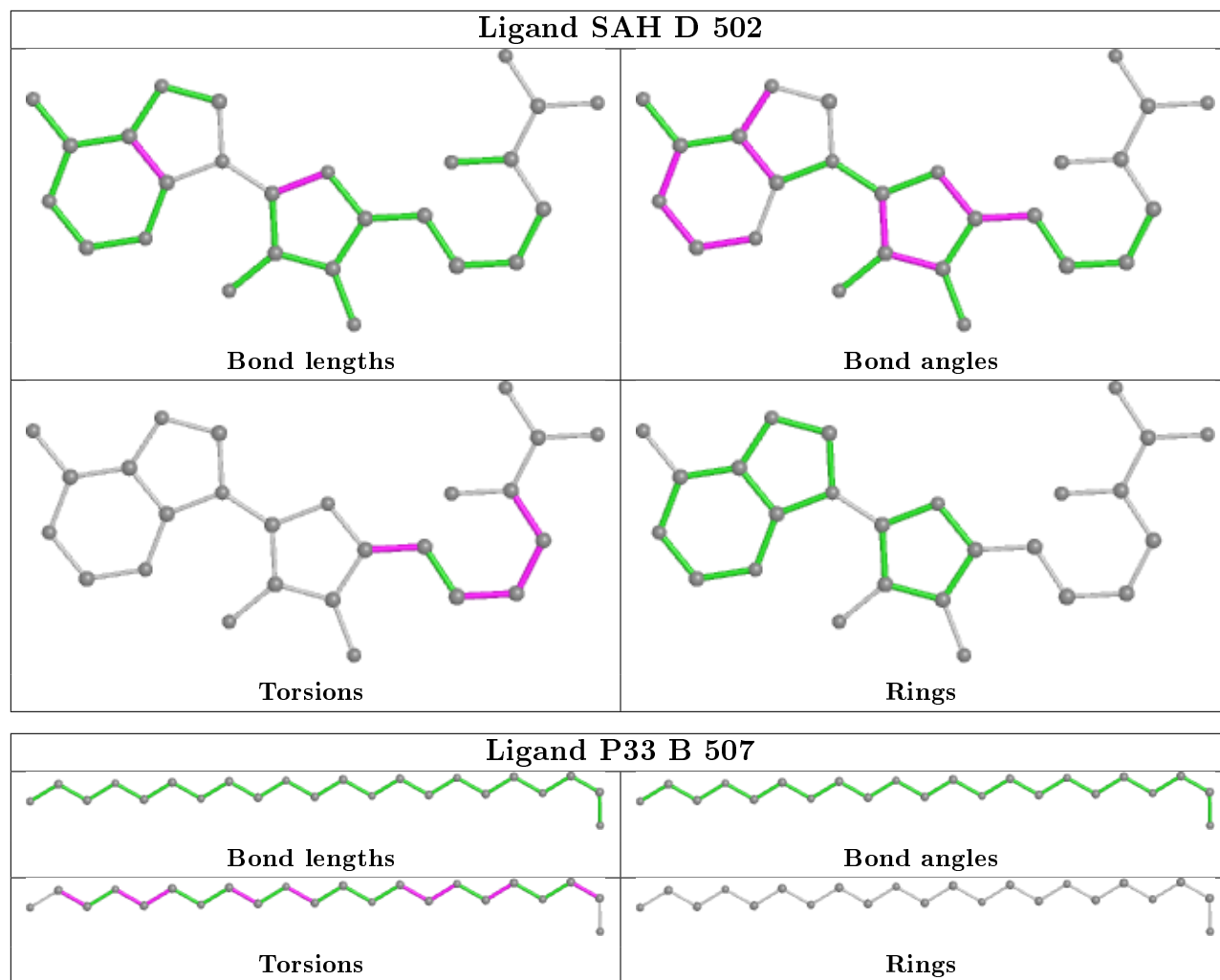
6 monomers are involved in 8 short contacts:

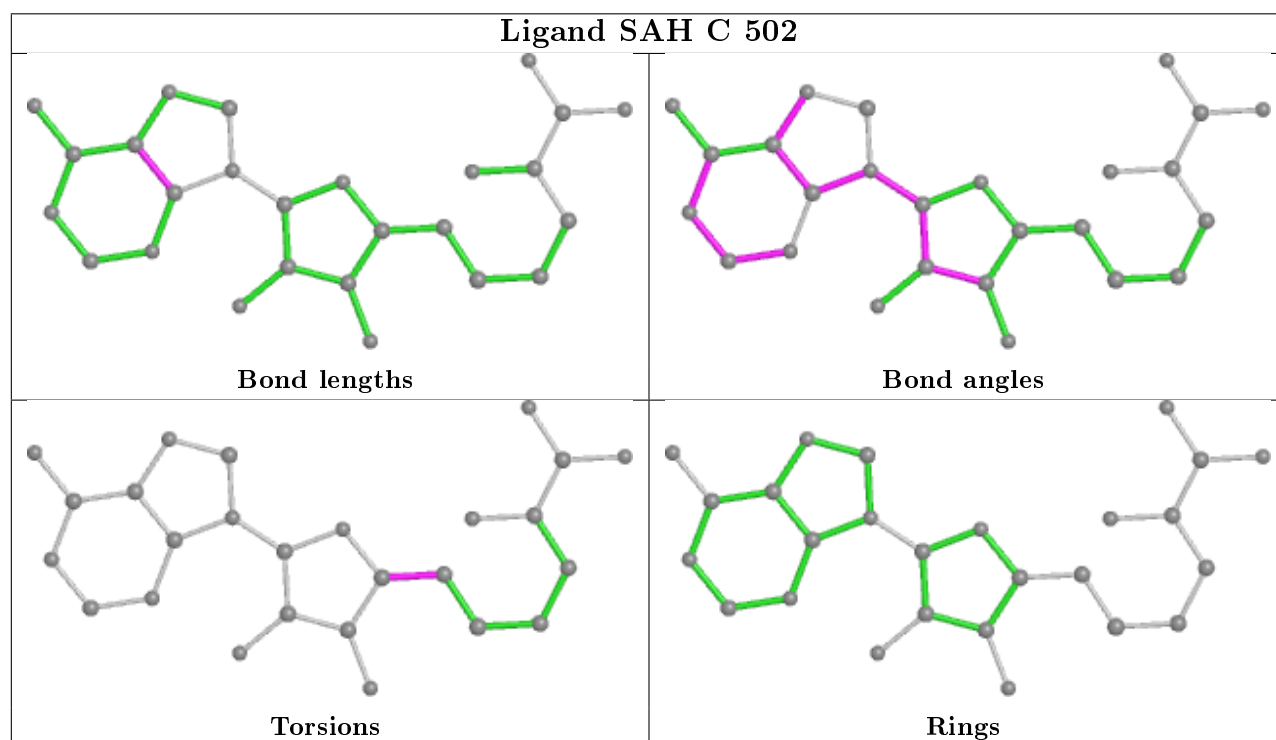
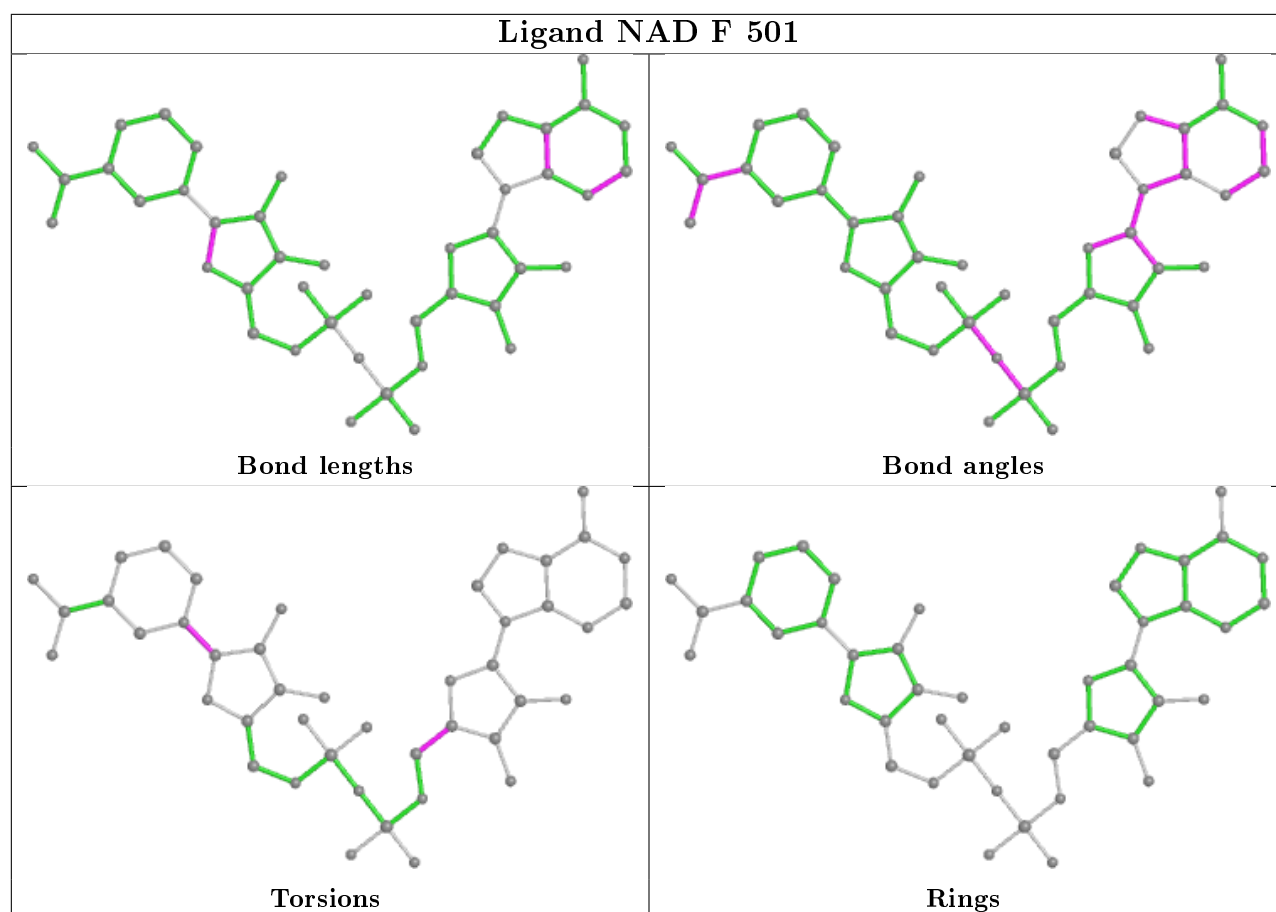
Mol	Chain	Res	Type	Clashes	Symm-Clashes
3	F	502[A]	SAH	3	0
3	B	502	SAH	2	0
3	D	502	SAH	1	0
2	F	501	NAD	1	0
8	F	503[B]	ADN	1	0
3	H	502[A]	SAH	1	0

The following is a two-dimensional graphical depiction of Mogul quality analysis of bond lengths, bond angles, torsion angles, and ring geometry for all instances of the Ligand of Interest. In addition, ligands with molecular weight > 250 and outliers as shown on the validation Tables will also be included. For torsion angles, if less than 5% of the Mogul distribution of torsion angles is within 10 degrees of the torsion angle in question, then that torsion angle is considered an outlier. Any bond that is central to one or more torsion angles identified as an outlier by Mogul will be highlighted in the graph. For rings, the root-mean-square deviation (RMSD) between the ring in question and similar rings identified by Mogul is calculated over all ring torsion angles. If the average RMSD is greater than 60 degrees and the minimal RMSD between the ring in question and any Mogul-identified rings is also greater than 60 degrees, then that ring is considered an outlier. The outliers are highlighted in purple. The color gray indicates Mogul did not find sufficient equivalents in the CSD to analyse the geometry.

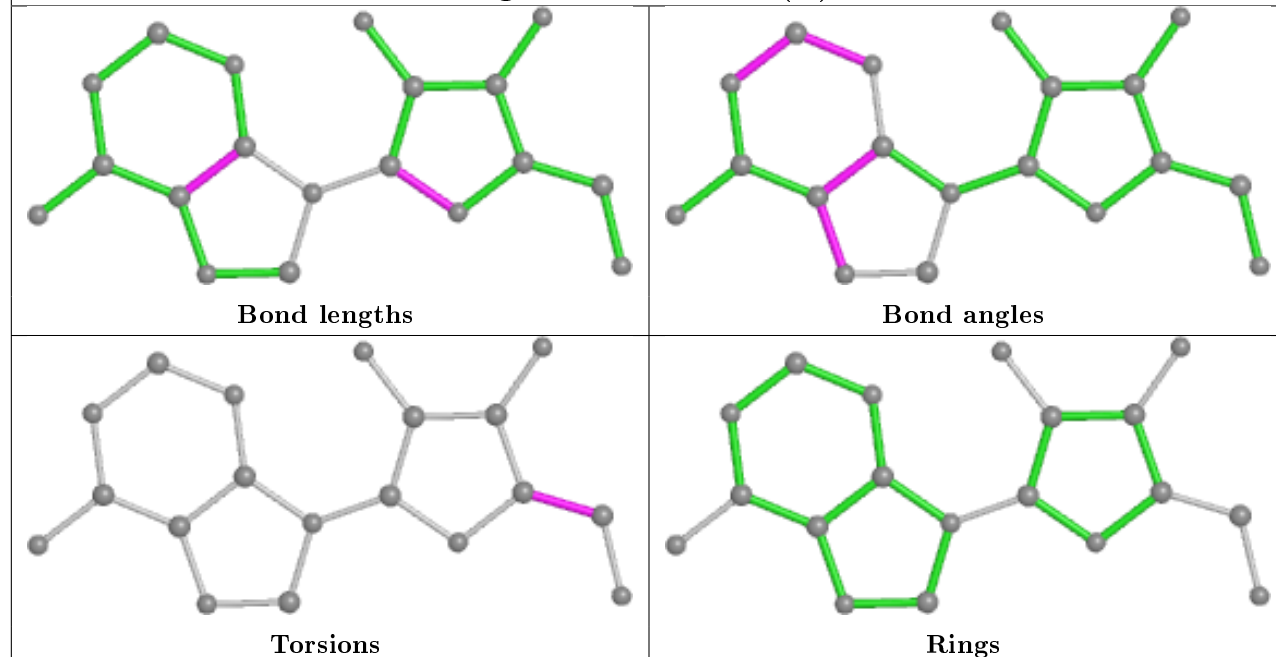




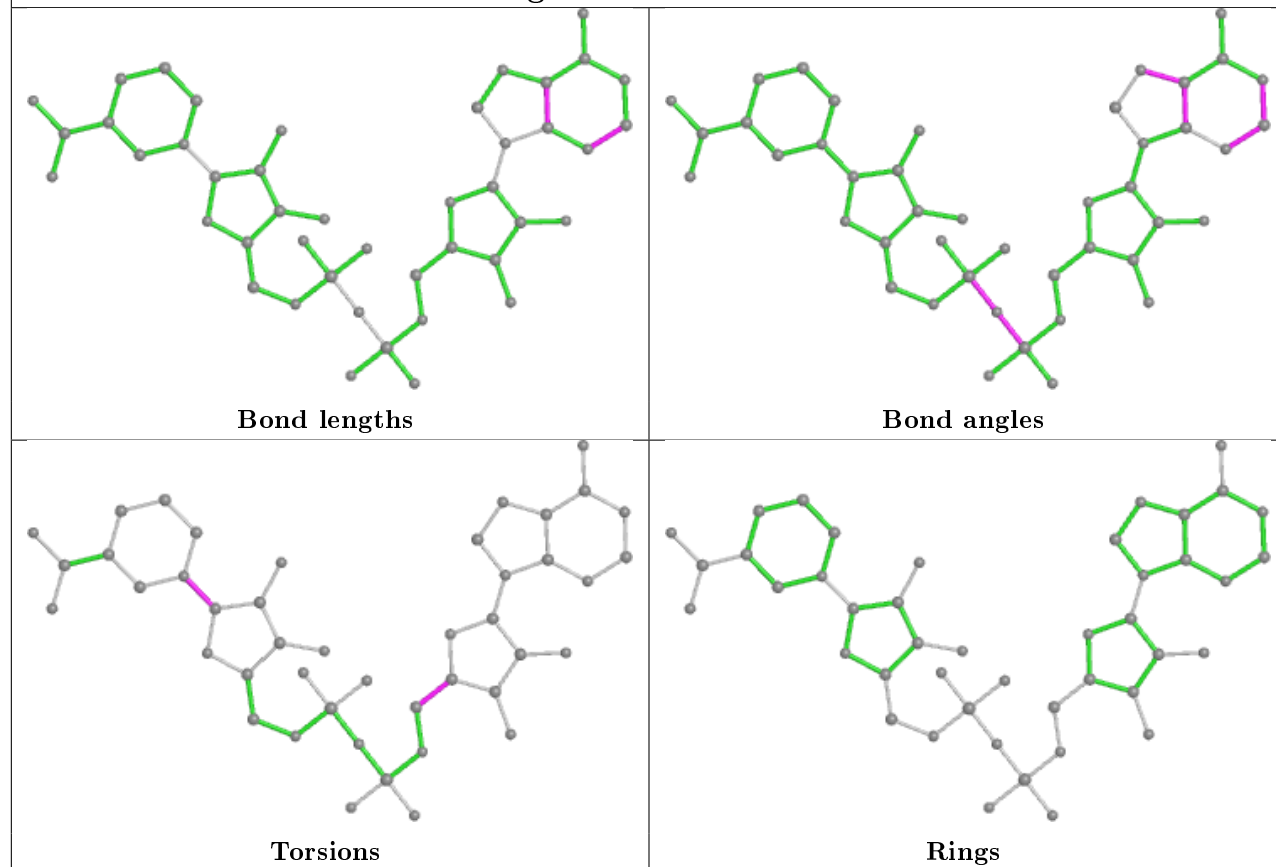


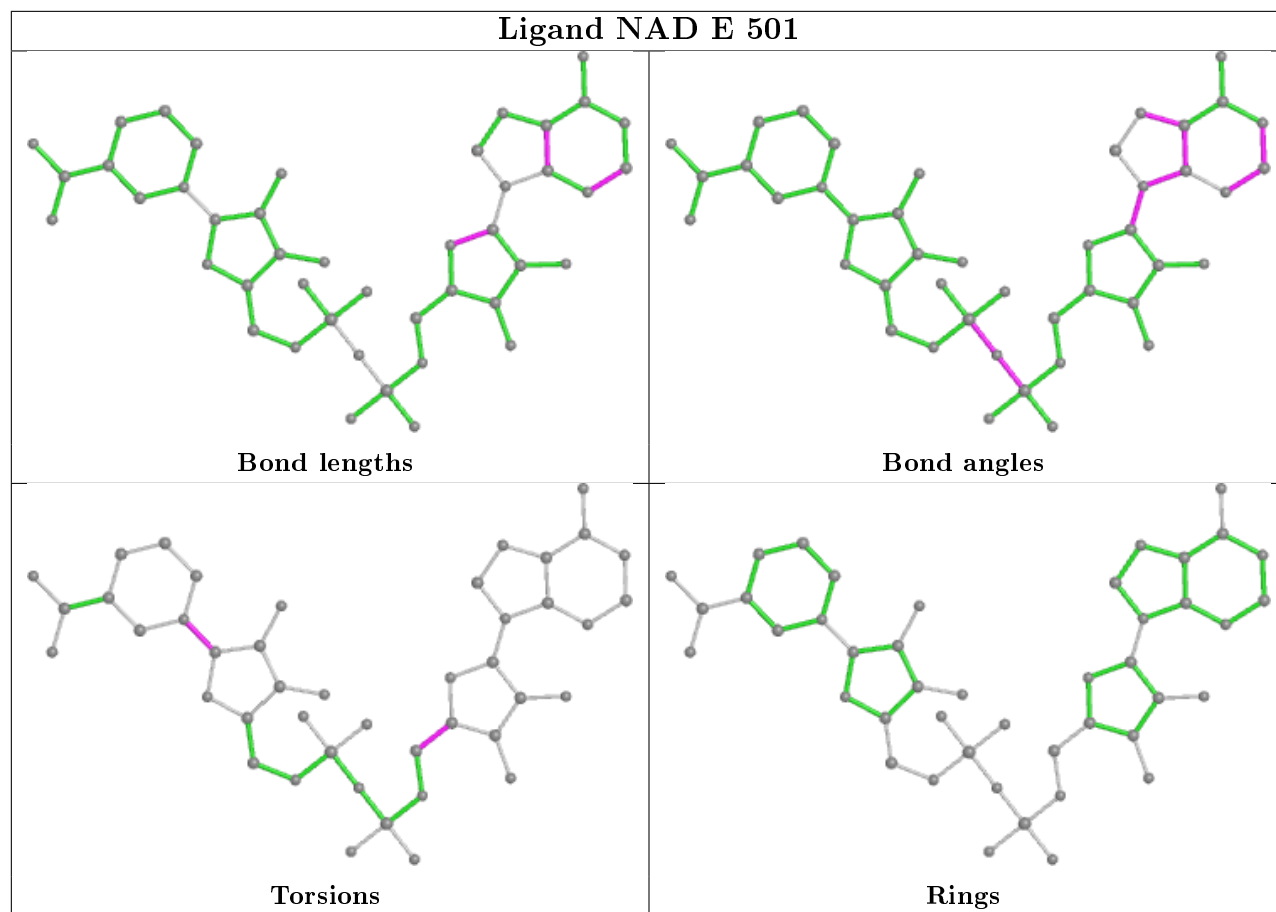


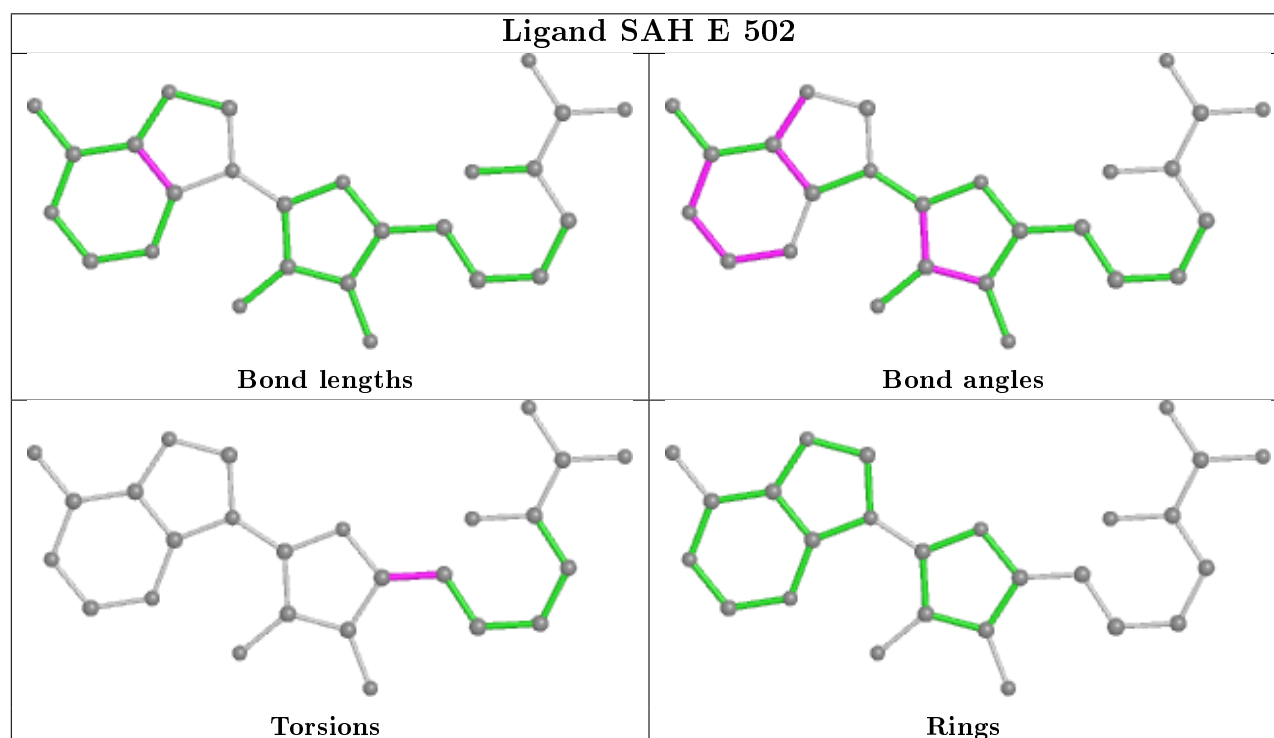
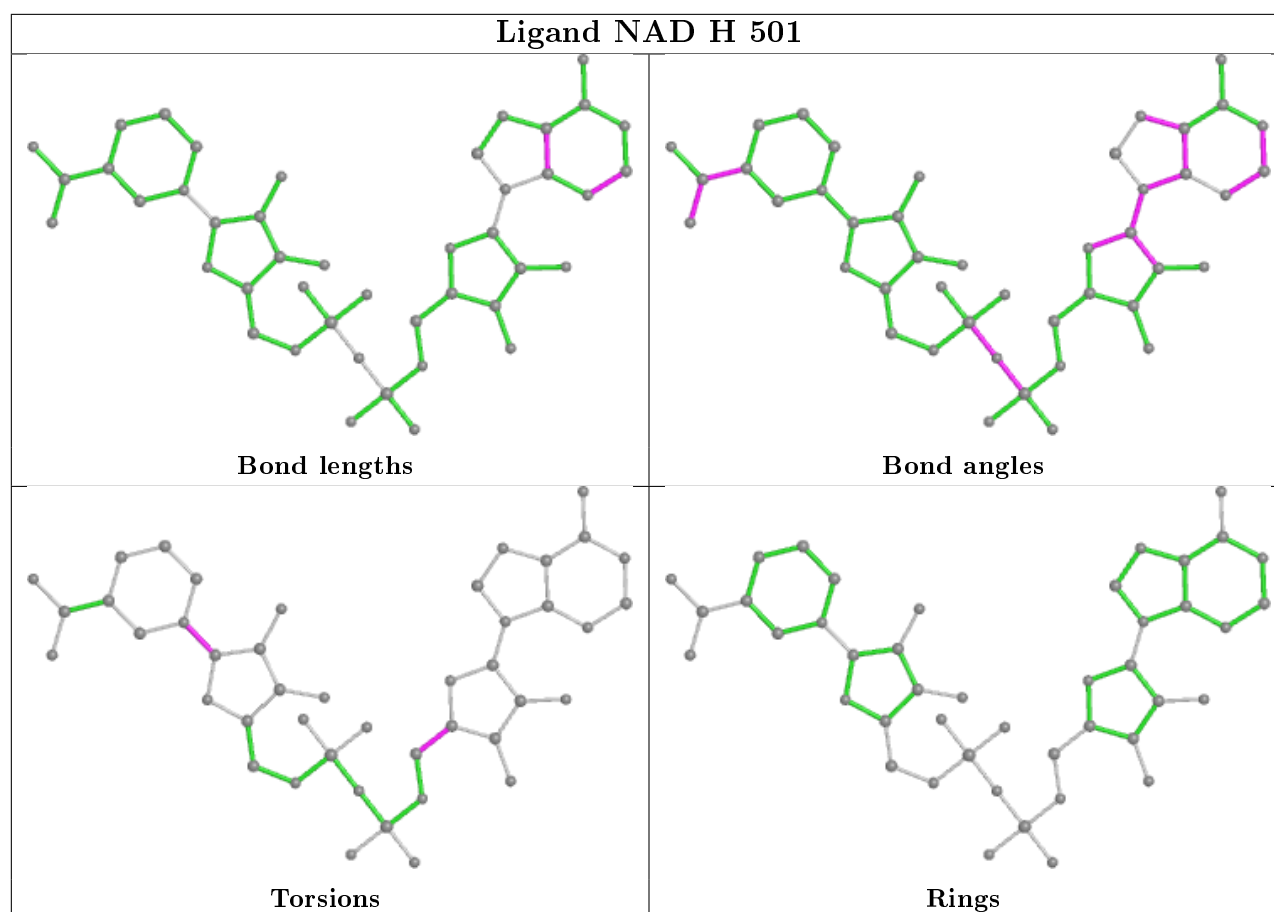
## Ligand ADN F 503 (B)

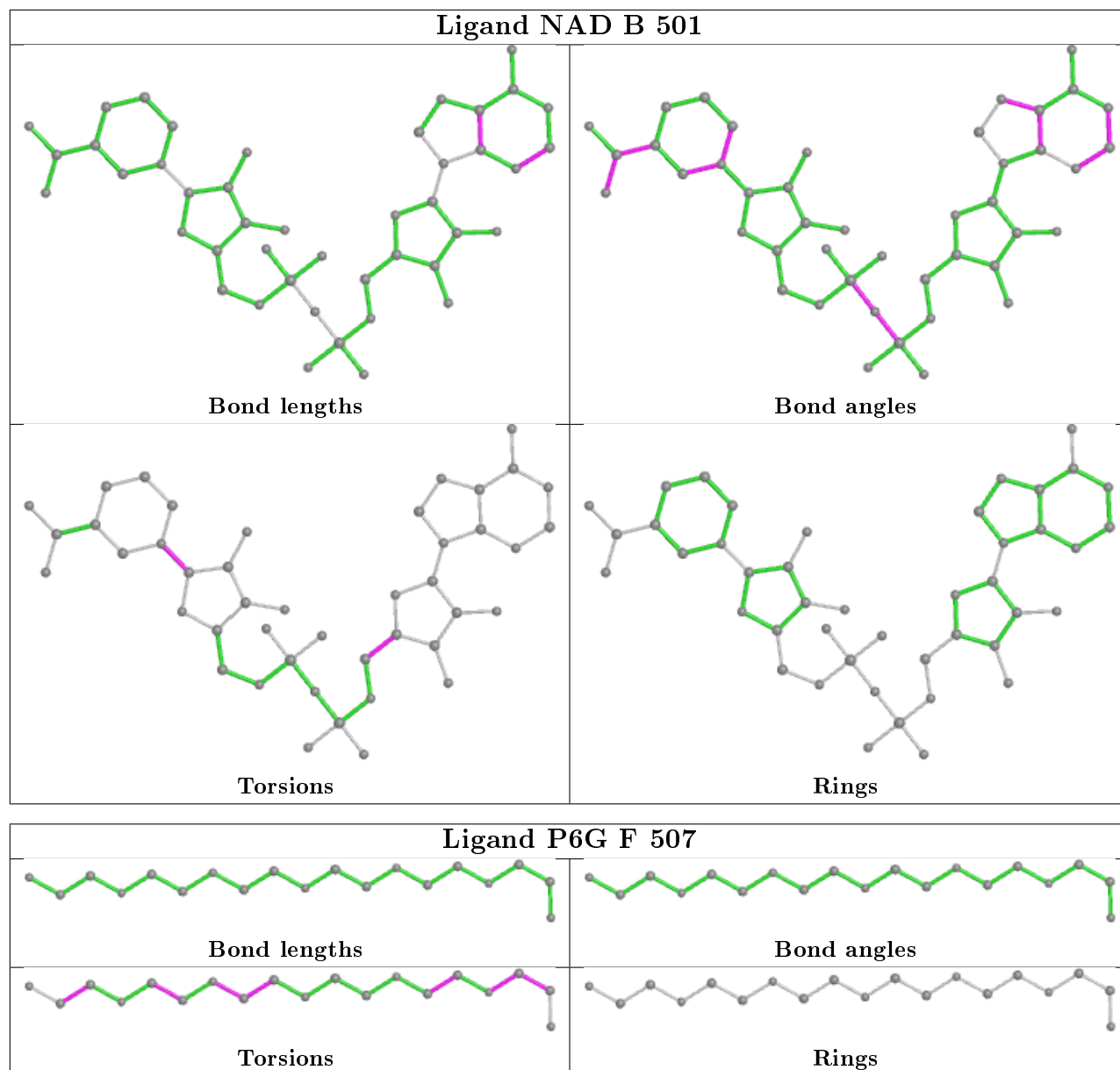


## Ligand NAD A 501

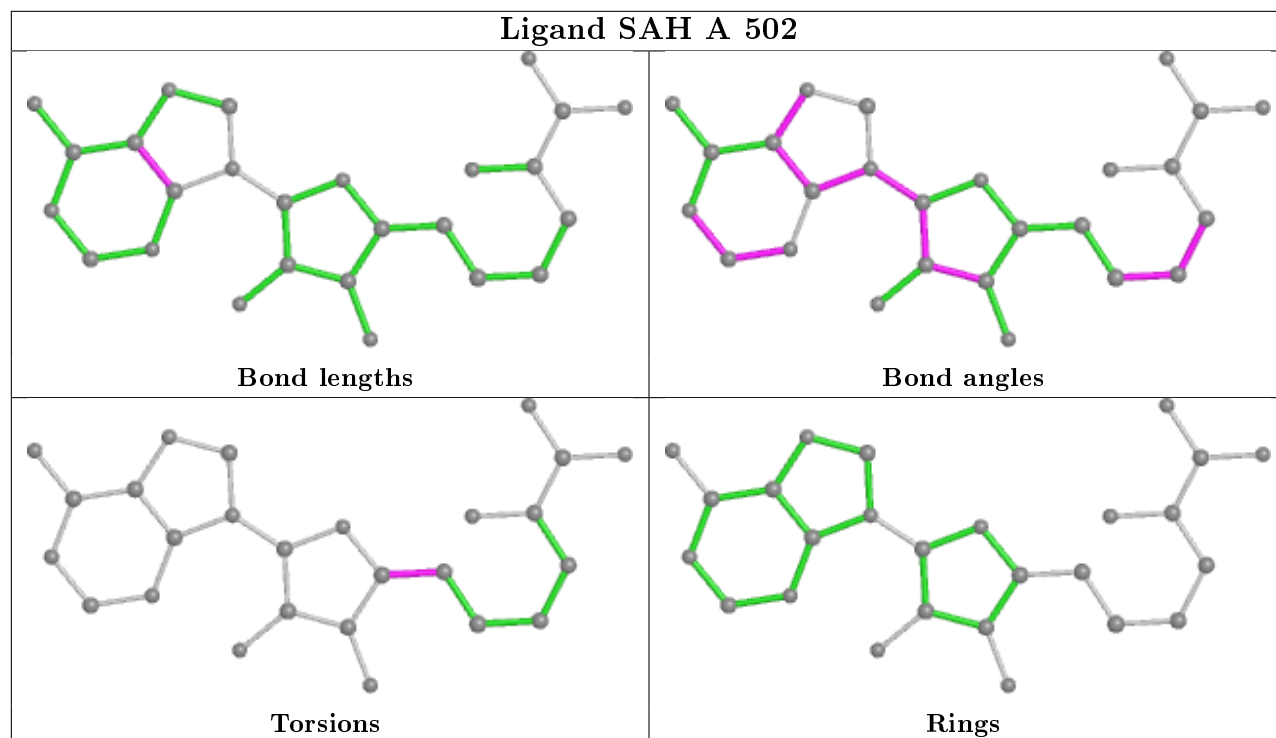




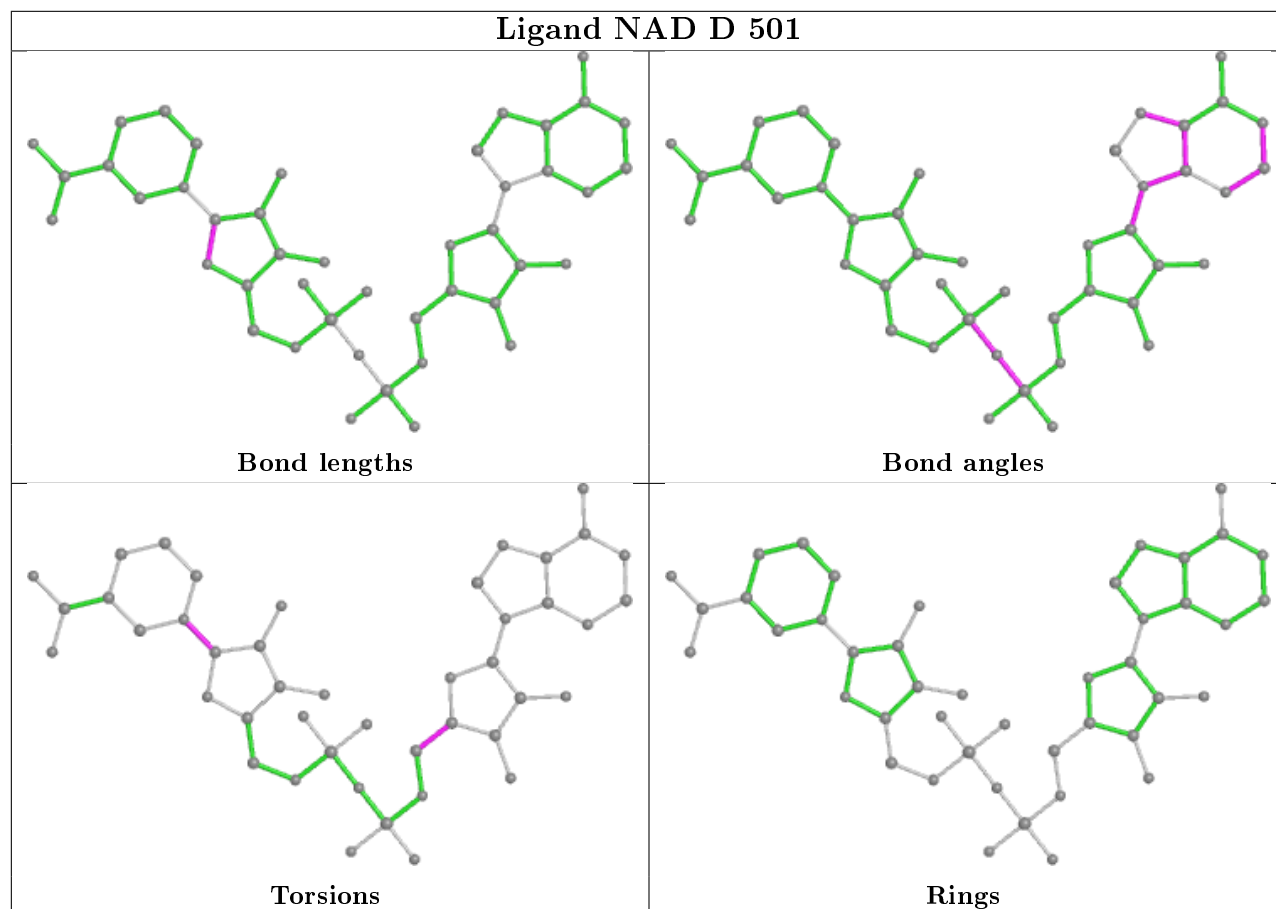


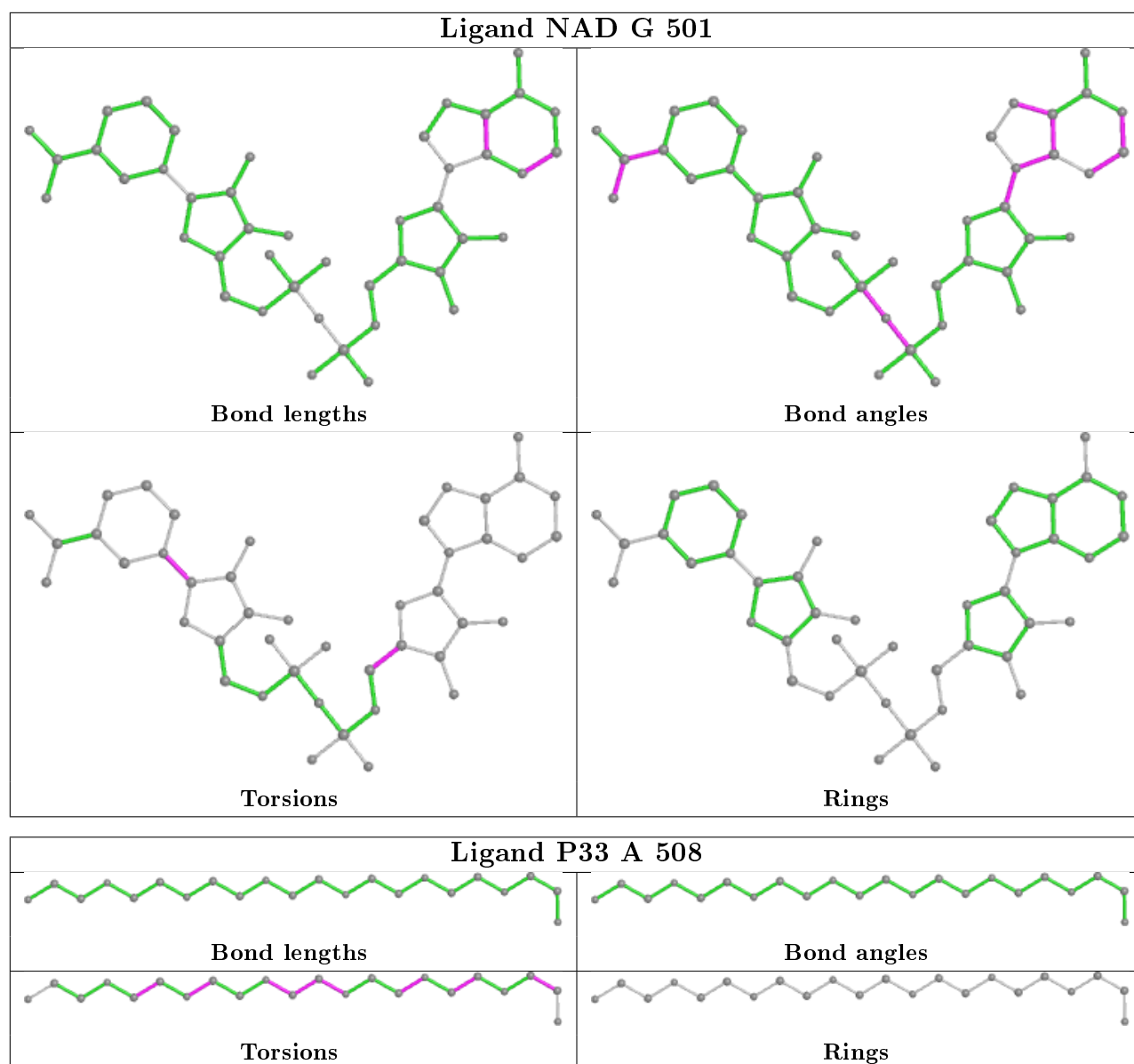


## Ligand SAH A 502

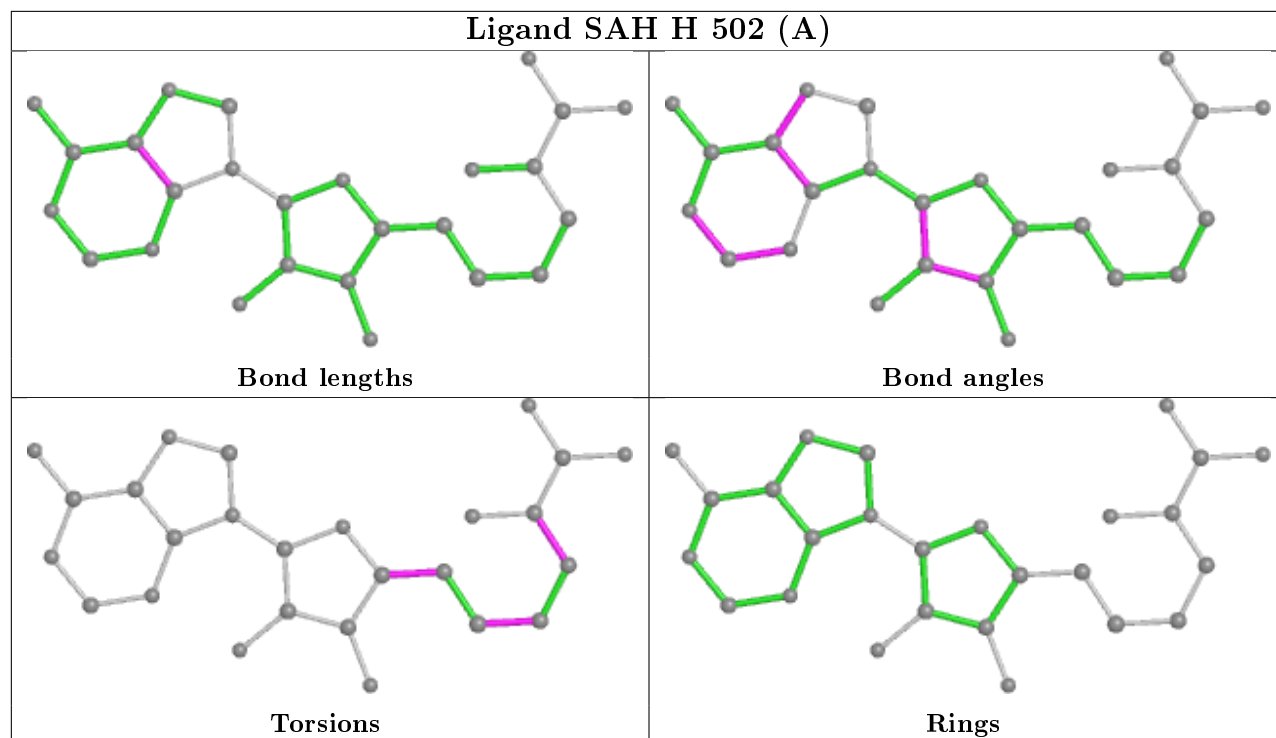


## Ligand NAD D 501

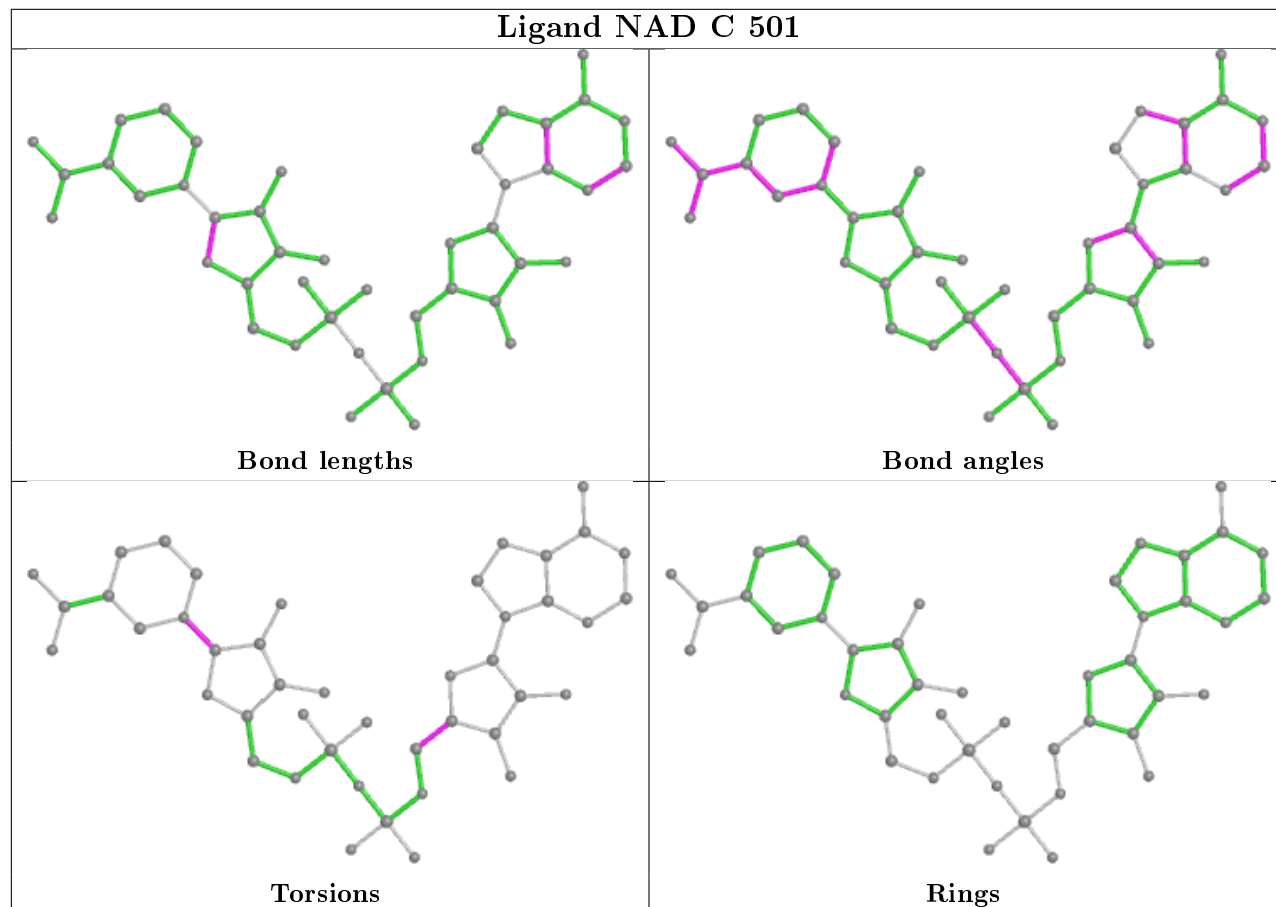




## Ligand SAH H 502 (A)



## Ligand NAD C 501



## 5.7 Other polymers [i](#)

There are no such residues in this entry.

## 5.8 Polymer linkage issues [i](#)

There are no chain breaks in this entry.

## 6 Fit of model and data ⓘ

### 6.1 Protein, DNA and RNA chains ⓘ

In the following table, the column labelled ‘#RSRZ> 2’ contains the number (and percentage) of RSRZ outliers, followed by percent RSRZ outliers for the chain as percentile scores relative to all X-ray entries and entries of similar resolution. The OWAB column contains the minimum, median, 95<sup>th</sup> percentile and maximum values of the occupancy-weighted average B-factor per residue. The column labelled ‘Q< 0.9’ lists the number of (and percentage) of residues with an average occupancy less than 0.9.

Mol	Chain	Analysed	<RSRZ>	#RSRZ>2			OWAB(Å <sup>2</sup> )	Q<0.9
1	A	494/498 (99%)	-0.41	15 (3%)	50	47	30, 44, 84, 143	0
1	B	494/498 (99%)	-0.21	27 (5%)	25	21	30, 54, 117, 170	0
1	C	491/498 (98%)	-0.43	12 (2%)	59	54	31, 45, 86, 151	0
1	D	493/498 (98%)	-0.31	17 (3%)	45	41	29, 50, 105, 157	0
1	E	494/498 (99%)	-0.45	10 (2%)	65	60	30, 44, 85, 143	0
1	F	493/498 (98%)	-0.27	17 (3%)	45	41	27, 49, 105, 128	0
1	G	495/498 (99%)	-0.43	11 (2%)	62	57	28, 42, 85, 140	0
1	H	487/498 (97%)	-0.39	11 (2%)	60	56	29, 52, 95, 136	0
All	All	3941/3984 (98%)	-0.36	120 (3%)	50	47	27, 47, 97, 170	0

All (120) RSRZ outliers are listed below:

Mol	Chain	Res	Type	RSRZ
1	D	3	MET	7.1
1	D	126	ASP	6.8
1	B	3	MET	6.2
1	F	442	THR	6.0
1	C	123	ASN	5.9
1	B	126	ASP	5.9
1	G	123	ASN	5.6
1	G	122	PRO	5.5
1	D	173	GLY	5.4
1	A	3	MET	5.2
1	D	127	LYS	5.1
1	G	3	MET	5.0
1	F	174	LYS	4.9
1	C	3	MET	4.8
1	G	124	ASP	4.7
1	D	123	ASN	4.7

*Continued on next page...*

*Continued from previous page...*

Mol	Chain	Res	Type	RSRZ
1	B	439	SER	4.7
1	A	123	ASN	4.6
1	E	3	MET	4.6
1	H	441	ASN	4.6
1	E	158	TYR	4.4
1	F	3	MET	4.2
1	C	121	ASN	4.2
1	A	125	LYS	4.1
1	C	174	LYS	3.9
1	B	124	ASP	3.9
1	G	121	ASN	3.9
1	H	439	SER	3.9
1	E	123	ASN	3.8
1	G	126	ASP	3.7
1	B	441	ASN	3.7
1	D	122	PRO	3.7
1	B	157	LYS	3.7
1	E	124	ASP	3.6
1	B	440	LYS	3.6
1	D	174	LYS	3.6
1	H	3	MET	3.5
1	D	439	SER	3.5
1	H	440	LYS	3.5
1	B	121	ASN	3.5
1	G	441	ASN	3.5
1	C	171	GLU	3.5
1	A	124	ASP	3.4
1	F	441	ASN	3.4
1	A	122	PRO	3.4
1	E	159	ASN	3.3
1	F	159	ASN	3.3
1	B	122	PRO	3.3
1	F	169	LEU	3.2
1	A	172	ASN	3.2
1	A	171	GLU	3.1
1	B	163	GLU	3.1
1	B	169	LEU	3.1
1	F	126	ASP	3.1
1	D	124	ASP	3.0
1	F	166	GLU	3.0
1	D	441	ASN	3.0
1	D	442	THR	3.0

*Continued on next page...*

*Continued from previous page...*

Mol	Chain	Res	Type	RSRZ
1	B	434	GLU	2.9
1	B	167	THR	2.9
1	D	169	LEU	2.8
1	B	125	LYS	2.8
1	G	120	ARG	2.8
1	E	125	LYS	2.8
1	B	436	VAL	2.7
1	A	441	ASN	2.7
1	A	439	SER	2.7
1	B	168	GLU	2.7
1	F	173	GLY	2.7
1	F	439	SER	2.7
1	F	172	ASN	2.7
1	A	126	ASP	2.7
1	D	171	GLU	2.7
1	B	123	ASN	2.7
1	B	173	GLY	2.7
1	G	127	LYS	2.7
1	D	158	TYR	2.6
1	B	127	LYS	2.6
1	D	125	LYS	2.6
1	C	120	ARG	2.6
1	F	171	GLU	2.6
1	H	443	ARG	2.6
1	C	196	PHE	2.5
1	B	442	THR	2.5
1	H	437	ASP	2.5
1	C	122	PRO	2.5
1	E	161	ILE	2.5
1	A	440	LYS	2.5
1	C	158	TYR	2.5
1	C	127	LYS	2.4
1	D	121	ASN	2.4
1	E	171	GLU	2.4
1	H	128	ILE	2.4
1	B	159	ASN	2.4
1	F	123	ASN	2.4
1	F	120	ARG	2.4
1	H	157	LYS	2.4
1	F	224	SER	2.4
1	F	160	LYS	2.4
1	H	442	THR	2.3

*Continued on next page...*

*Continued from previous page...*

Mol	Chain	Res	Type	RSRZ
1	B	120	ARG	2.3
1	B	172	ASN	2.3
1	A	163	GLU	2.3
1	A	127	LYS	2.3
1	B	443	ARG	2.3
1	D	172	ASN	2.3
1	F	167	THR	2.3
1	B	171	GLU	2.3
1	B	437	ASP	2.3
1	G	439	SER	2.2
1	E	120	ARG	2.2
1	A	173	GLY	2.2
1	B	158	TYR	2.2
1	C	203	LYS	2.2
1	C	170	ASP	2.2
1	A	121	ASN	2.1
1	H	169	LEU	2.1
1	E	121	ASN	2.0
1	G	125	LYS	2.0
1	H	196[A]	PHE	2.0

## 6.2 Non-standard residues in protein, DNA, RNA chains [i](#)

There are no non-standard protein/DNA/RNA residues in this entry.

## 6.3 Carbohydrates [i](#)

There are no monosaccharides in this entry.

## 6.4 Ligands [i](#)

In the following table, the Atoms column lists the number of modelled atoms in the group and the number defined in the chemical component dictionary. The B-factors column lists the minimum, median, 95<sup>th</sup> percentile and maximum values of B factors of atoms in the group. The column labelled 'Q< 0.9' lists the number of atoms with occupancy less than 0.9.

Mol	Type	Chain	Res	Atoms	RSCC	RSR	B-factors(Å <sup>2</sup> )	Q<0.9
4	CL	B	504	1/1	0.63	0.15	84,84,84,84	0
4	CL	G	503	1/1	0.69	0.18	71,71,71,71	0
9	PEG	G	509	7/7	0.73	0.35	82,94,103,104	0

*Continued on next page...*

*Continued from previous page...*

Mol	Type	Chain	Res	Atoms	RSCC	RSR	B-factors( $\text{\AA}^2$ )	Q<0.9
5	SO4	H	505	5/5	0.74	0.20	93,101,109,119	0
4	CL	D	503	1/1	0.77	0.34	80,80,80,80	0
5	SO4	B	506	5/5	0.78	0.21	101,102,116,118	0
4	CL	A	503	1/1	0.81	0.19	86,86,86,86	0
4	CL	F	504	1/1	0.82	0.27	80,80,80,80	0
5	SO4	C	506	5/5	0.83	0.30	102,108,115,119	0
9	PEG	G	508	7/7	0.83	0.20	62,67,73,76	0
5	SO4	B	505	5/5	0.84	0.39	99,107,116,123	0
5	SO4	A	506	5/5	0.84	0.33	91,98,105,107	0
4	CL	G	504	1/1	0.85	0.09	65,65,65,65	0
6	P33	A	508	22/22	0.85	0.25	62,77,84,90	0
5	SO4	D	506	5/5	0.86	0.28	47,50,57,58	5
5	SO4	F	505	5/5	0.86	0.30	85,91,97,106	0
5	SO4	A	505	5/5	0.86	0.19	80,82,86,98	0
8	ADN	F	503[B]	19/19	0.86	0.26	40,52,58,60	19
5	SO4	C	507	5/5	0.88	0.28	94,99,104,106	0
3	SAH	F	502[A]	26/26	0.88	0.27	37,65,72,73	26
5	SO4	G	507	5/5	0.88	0.15	74,81,87,95	0
4	CL	C	503	1/1	0.89	0.23	74,74,74,74	0
6	P33	H	507	22/22	0.90	0.22	53,66,69,71	0
4	CL	E	503	1/1	0.91	0.11	66,66,66,66	0
6	P33	B	507	22/22	0.91	0.23	51,66,71,75	0
7	P6G	F	507	19/19	0.91	0.18	48,59,70,71	0
5	SO4	G	505	5/5	0.92	0.36	77,80,87,94	0
4	CL	H	504	1/1	0.92	0.09	67,67,67,67	0
8	ADN	H	503[B]	19/19	0.92	0.18	29,35,37,37	19
3	SAH	H	502[A]	26/26	0.93	0.19	47,93,98,100	26
5	SO4	C	504	5/5	0.93	0.41	95,96,97,116	0
3	SAH	B	502	26/26	0.93	0.18	42,52,80,96	0
3	SAH	D	502	26/26	0.94	0.19	48,57,64,72	0
7	P6G	D	507	19/19	0.94	0.16	46,62,69,70	0
5	SO4	H	506	5/5	0.94	0.16	81,94,99,101	0
5	SO4	E	505	5/5	0.95	0.34	86,91,96,101	0
5	SO4	D	504	5/5	0.95	0.13	85,86,90,100	0
5	SO4	D	505	5/5	0.95	0.16	73,75,76,78	0
5	SO4	A	504	5/5	0.96	0.37	80,83,94,98	0
3	SAH	A	502	26/26	0.96	0.16	32,38,45,54	0
5	SO4	F	506	5/5	0.96	0.15	74,74,77,87	0
3	SAH	E	502	26/26	0.96	0.16	38,47,59,63	0
5	SO4	C	505	5/5	0.97	0.21	72,72,82,83	0
5	SO4	G	506	5/5	0.97	0.15	58,61,71,74	0
5	SO4	A	507	5/5	0.97	0.24	64,65,66,77	0

*Continued on next page...*

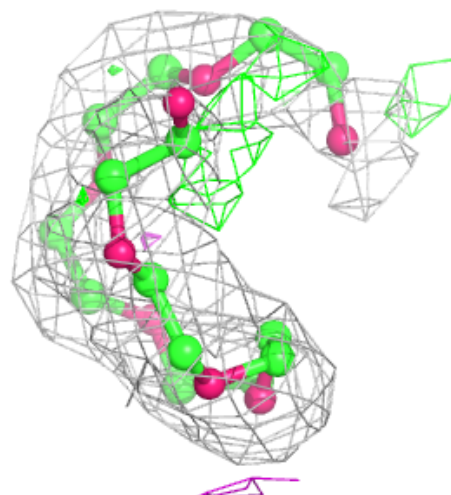
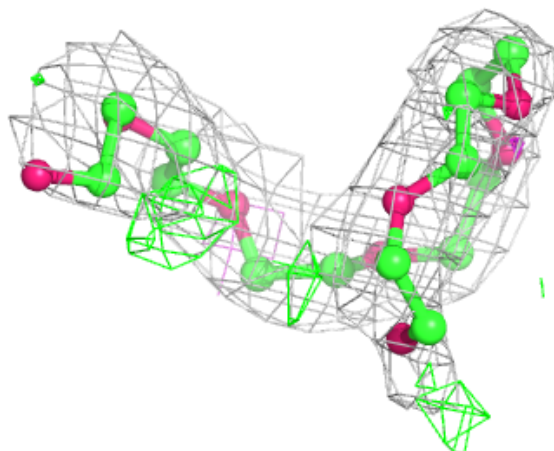
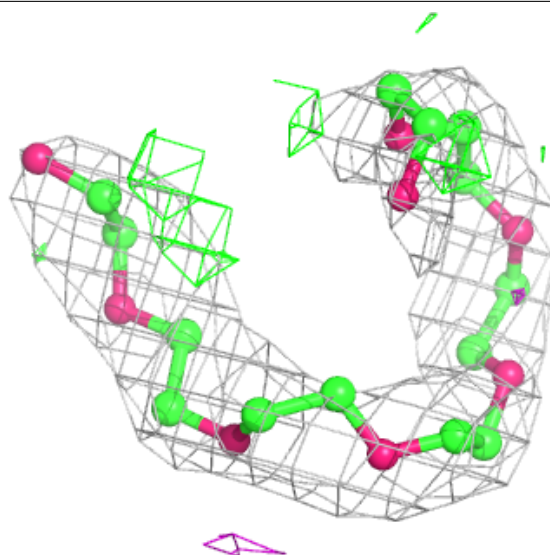
*Continued from previous page...*

Mol	Type	Chain	Res	Atoms	RSCC	RSR	B-factors( $\text{\AA}^2$ )	Q<0.9
3	SAH	C	502	26/26	0.97	0.15	29,41,63,66	0
2	NAD	C	501	44/44	0.97	0.13	31,36,40,43	0
4	CL	B	503	1/1	0.97	0.09	52,52,52,52	0
3	SAH	G	502	26/26	0.97	0.15	29,41,56,60	0
2	NAD	D	501	44/44	0.98	0.13	27,31,35,37	0
2	NAD	F	501	44/44	0.98	0.11	26,30,34,36	0
2	NAD	B	501	44/44	0.98	0.10	30,35,40,43	0
5	SO4	E	506	5/5	0.98	0.10	62,70,71,75	0
2	NAD	A	501	44/44	0.98	0.12	29,32,36,37	0
2	NAD	E	501	44/44	0.98	0.13	29,35,39,42	0
4	CL	E	504	1/1	0.99	0.04	65,65,65,65	0
2	NAD	G	501	44/44	0.99	0.11	27,31,34,39	0
2	NAD	H	501	44/44	0.99	0.09	33,36,38,40	0

The following is a graphical depiction of the model fit to experimental electron density of all instances of the Ligand of Interest. In addition, ligands with molecular weight > 250 and outliers as shown on the geometry validation Tables will also be included. Each fit is shown from different orientation to approximate a three-dimensional view.

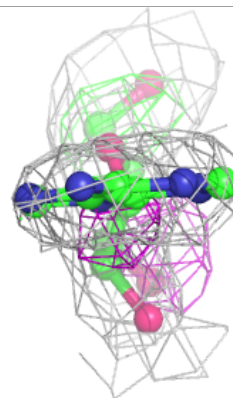
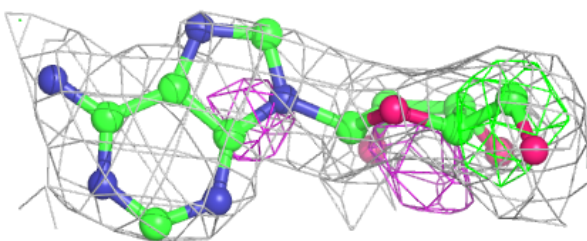
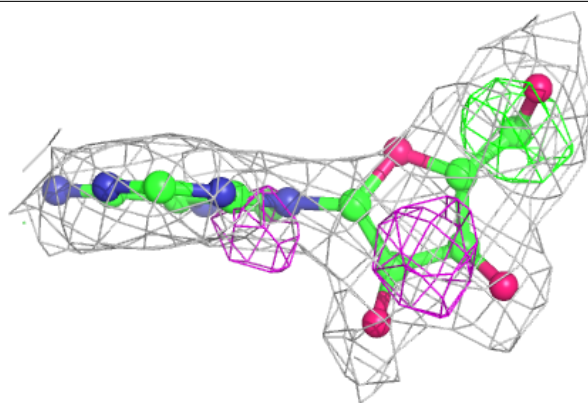
**Electron density around P33 A 508:**

$2mF_o-DF_c$  (at 0.7 rmsd) in gray  
 $mF_o-DF_c$  (at 3 rmsd) in purple (negative)  
and green (positive)

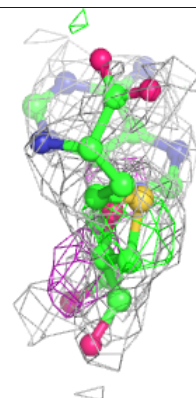
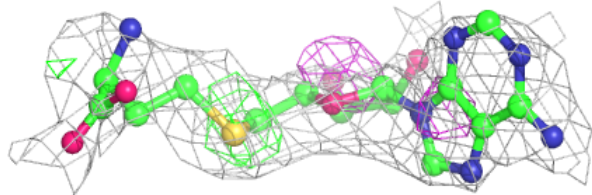
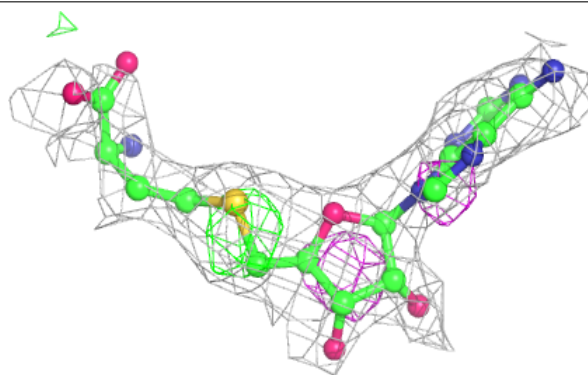


**Electron density around ADN F 503 (B):**

$2mF_o-DF_c$  (at 0.7 rmsd) in gray  
 $mF_o-DF_c$  (at 3 rmsd) in purple (negative)  
and green (positive)

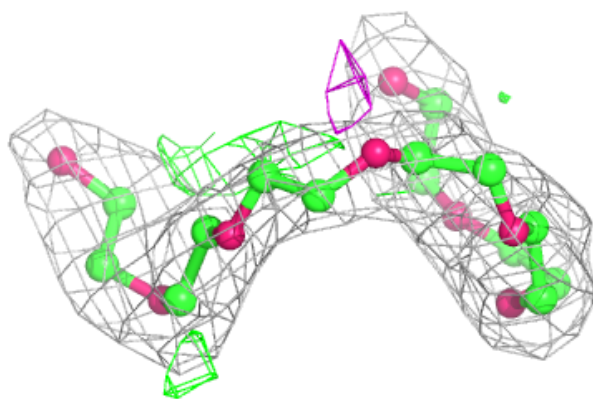
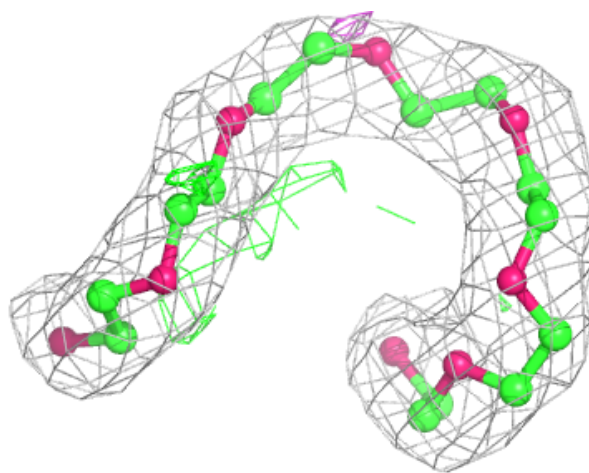
**Electron density around SAH F 502 (A):**

$2mF_o-DF_c$  (at 0.7 rmsd) in gray  
 $mF_o-DF_c$  (at 3 rmsd) in purple (negative)  
and green (positive)



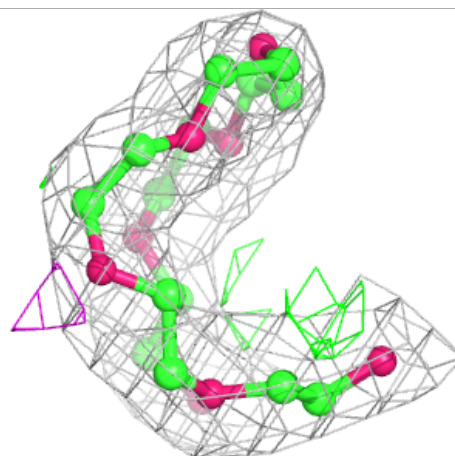
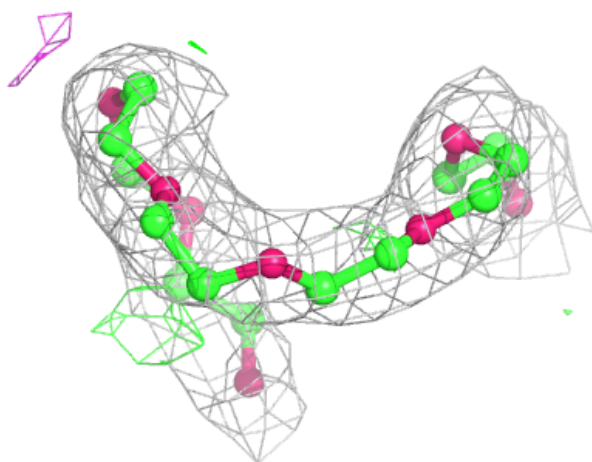
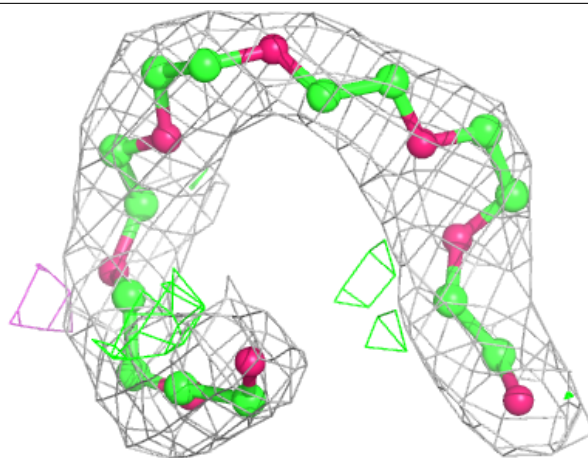
**Electron density around P33 H 507:**

$2mF_o-DF_c$  (at 0.7 rmsd) in gray  
 $mF_o-DF_c$  (at 3 rmsd) in purple (negative)  
and green (positive)



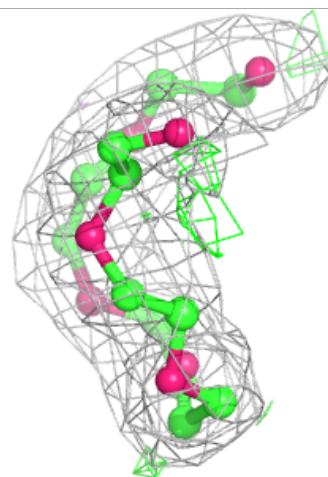
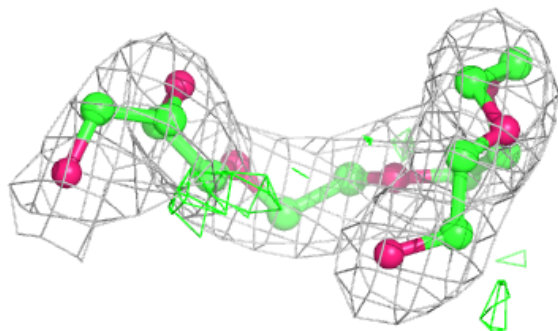
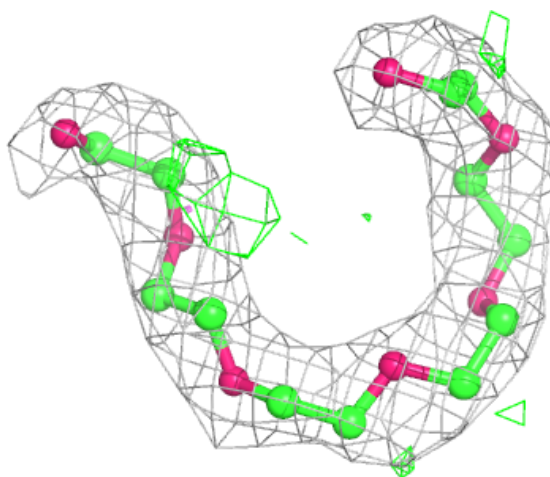
**Electron density around P33 B 507:**

$2mF_o-DF_c$  (at 0.7 rmsd) in gray  
 $mF_o-DF_c$  (at 3 rmsd) in purple (negative)  
and green (positive)



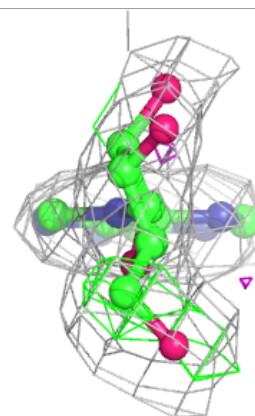
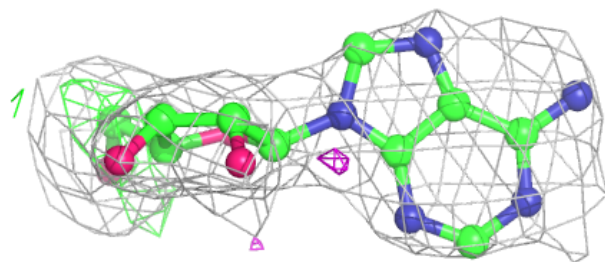
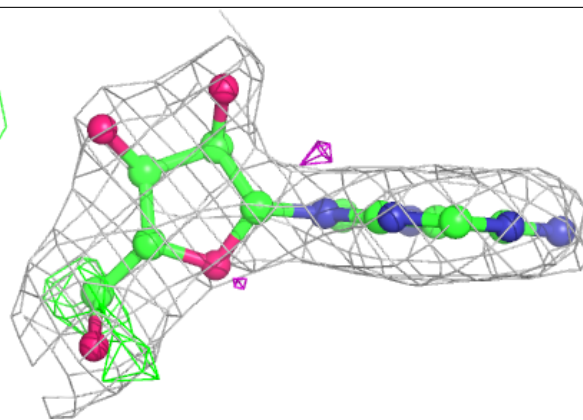
**Electron density around P6G F 507:**

$2mF_o-DF_c$  (at 0.7 rmsd) in gray  
 $mF_o-DF_c$  (at 3 rmsd) in purple (negative)  
and green (positive)

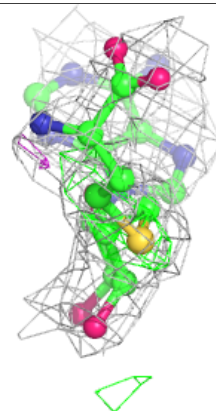
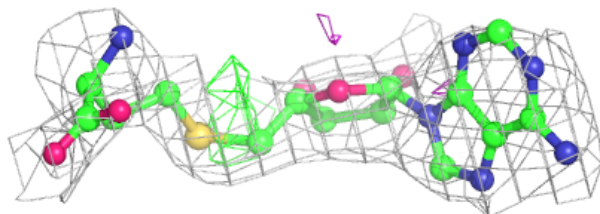
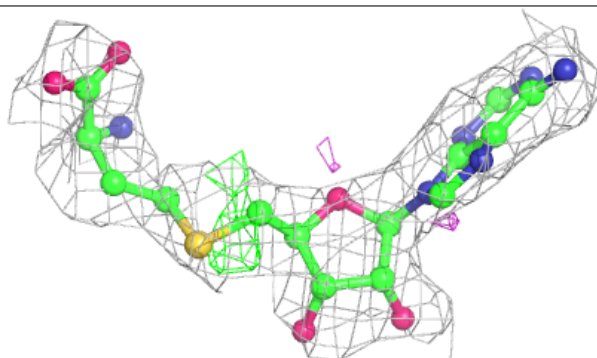


**Electron density around ADN H 503 (B):**

$2mF_o-DF_c$  (at 0.7 rmsd) in gray  
 $mF_o-DF_c$  (at 3 rmsd) in purple (negative)  
and green (positive)

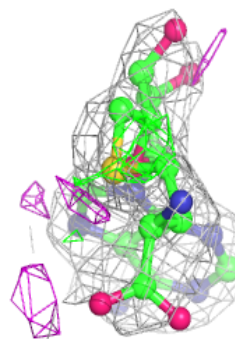
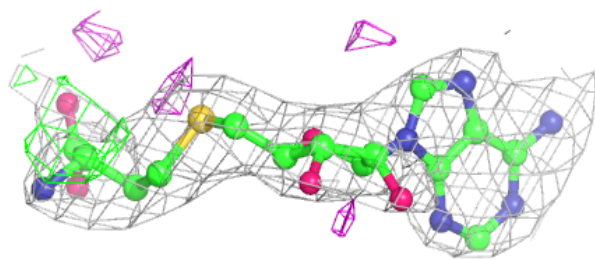
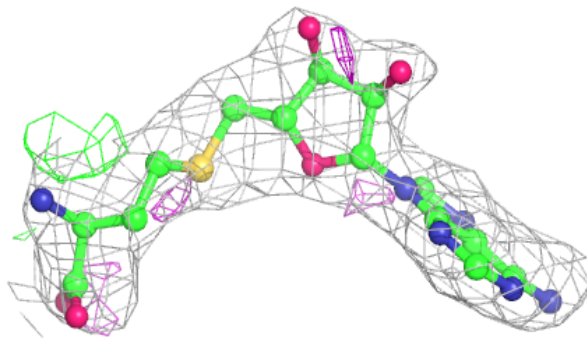
**Electron density around SAH H 502 (A):**

$2mF_o-DF_c$  (at 0.7 rmsd) in gray  
 $mF_o-DF_c$  (at 3 rmsd) in purple (negative)  
and green (positive)

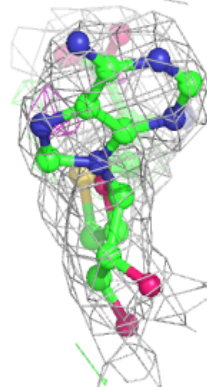
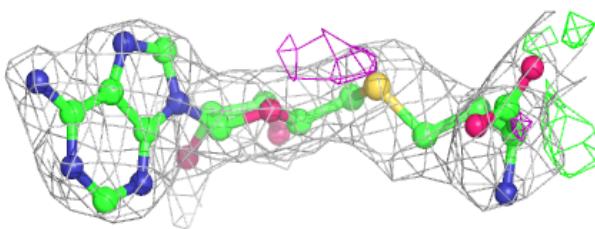
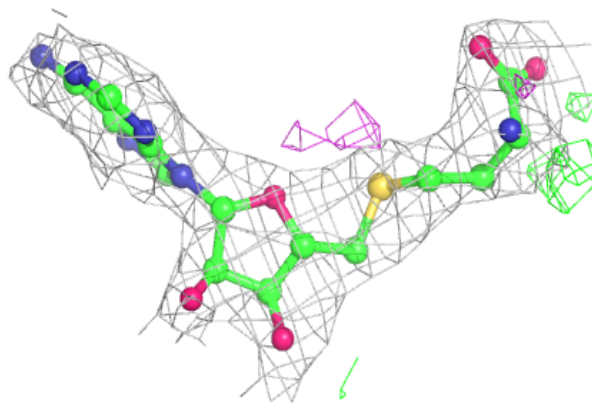


**Electron density around SAH B 502:**

$2mF_o-DF_c$  (at 0.7 rmsd) in gray  
 $mF_o-DF_c$  (at 3 rmsd) in purple (negative)  
and green (positive)

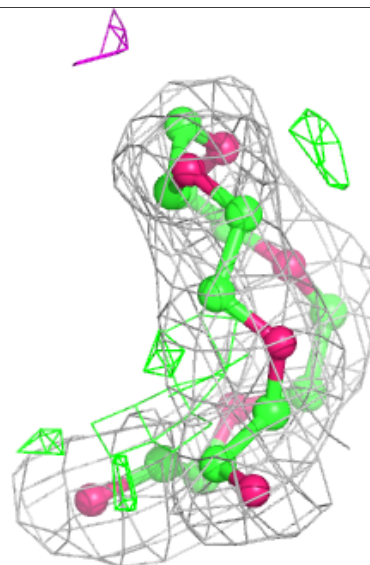
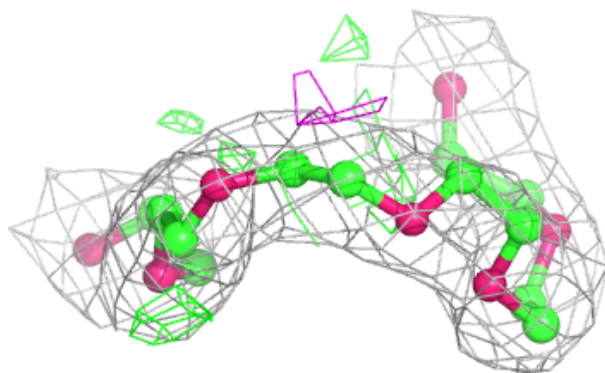
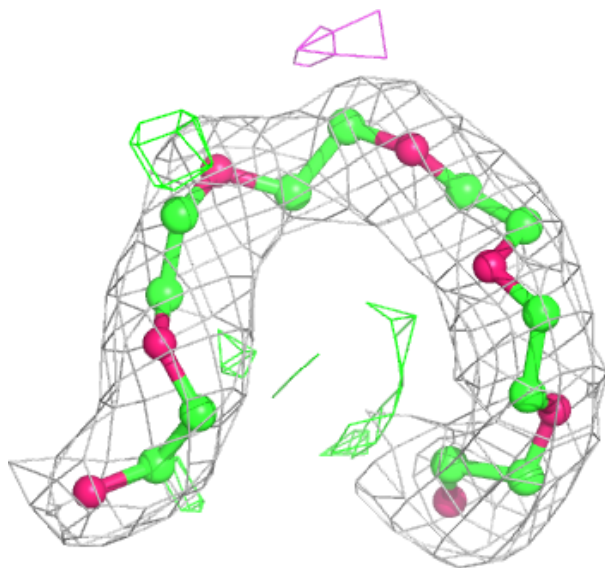
**Electron density around SAH D 502:**

$2mF_o-DF_c$  (at 0.7 rmsd) in gray  
 $mF_o-DF_c$  (at 3 rmsd) in purple (negative)  
and green (positive)



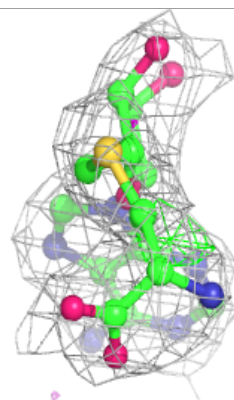
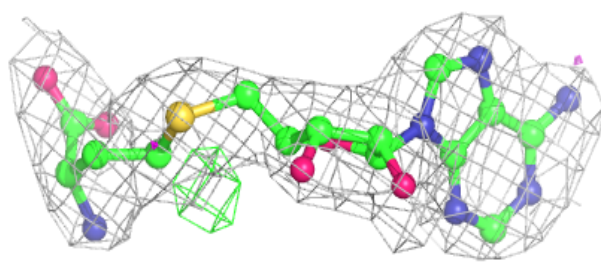
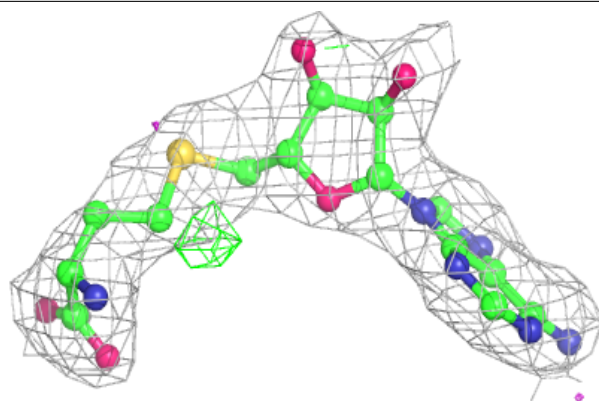
**Electron density around P6G D 507:**

$2mF_o-DF_c$  (at 0.7 rmsd) in gray  
 $mF_o-DF_c$  (at 3 rmsd) in purple (negative)  
and green (positive)

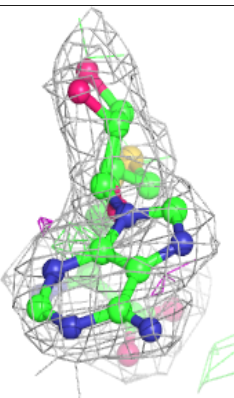
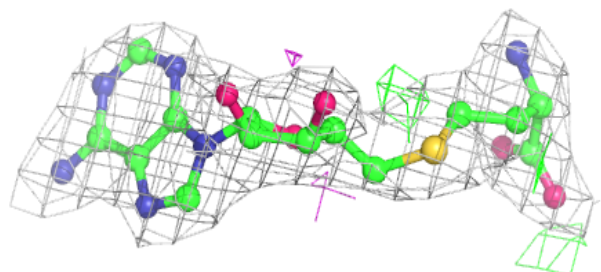
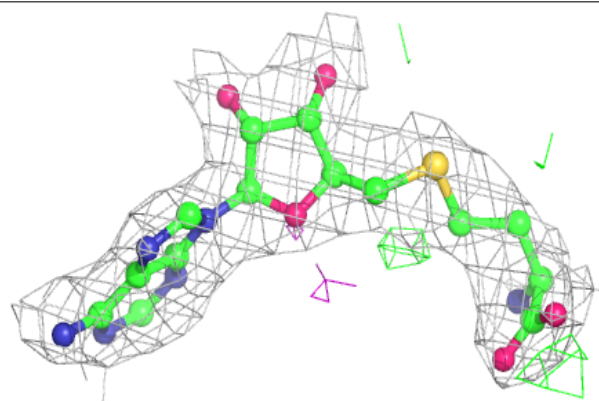


**Electron density around SAH A 502:**

$2mF_o-DF_c$  (at 0.7 rmsd) in gray  
 $mF_o-DF_c$  (at 3 rmsd) in purple (negative)  
and green (positive)

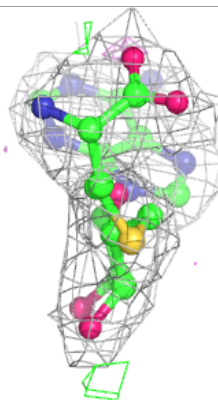
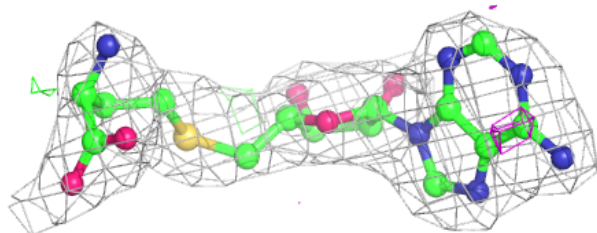
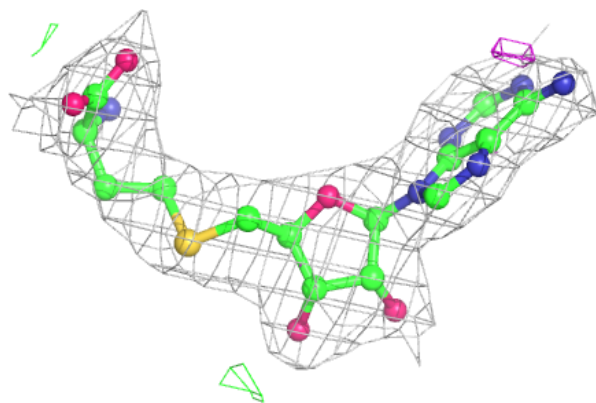
**Electron density around SAH E 502:**

$2mF_o-DF_c$  (at 0.7 rmsd) in gray  
 $mF_o-DF_c$  (at 3 rmsd) in purple (negative)  
and green (positive)

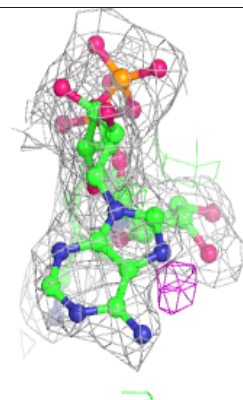
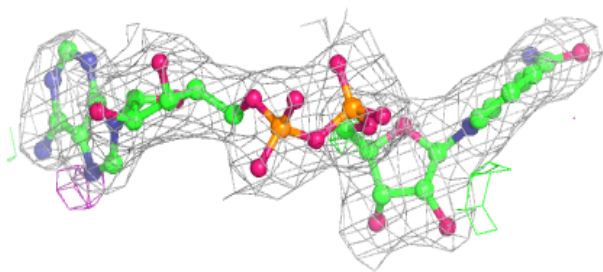
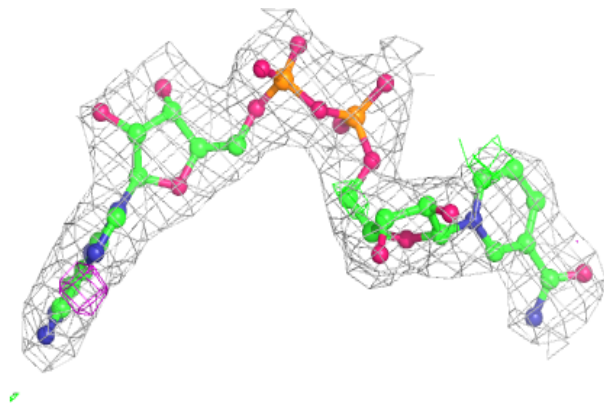


**Electron density around SAH C 502:**

$2mF_o-DF_c$  (at 0.7 rmsd) in gray  
 $mF_o-DF_c$  (at 3 rmsd) in purple (negative)  
and green (positive)

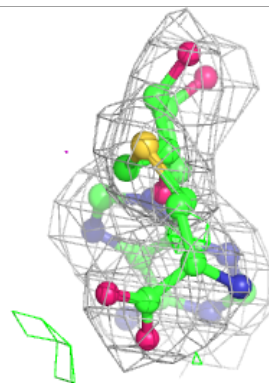
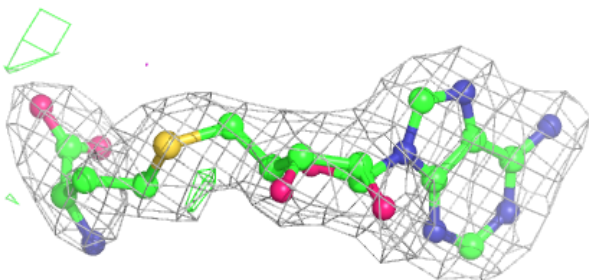
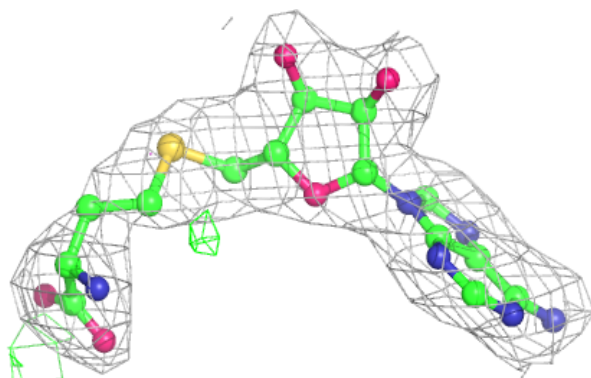
**Electron density around NAD C 501:**

$2mF_o-DF_c$  (at 0.7 rmsd) in gray  
 $mF_o-DF_c$  (at 3 rmsd) in purple (negative)  
and green (positive)

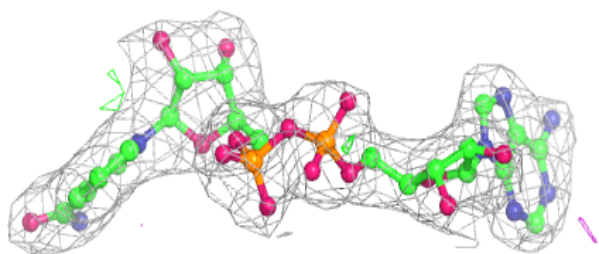
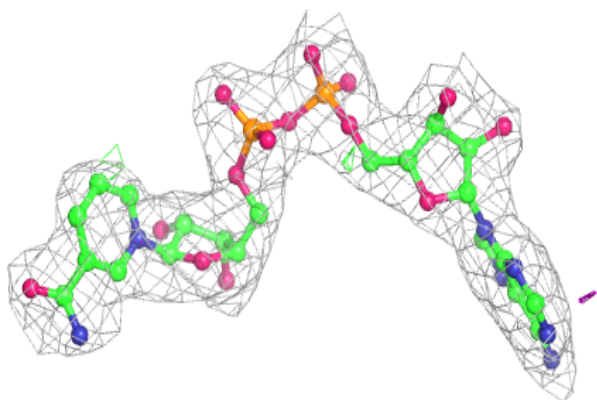


**Electron density around SAH G 502:**

$2mF_o-DF_c$  (at 0.7 rmsd) in gray  
 $mF_o-DF_c$  (at 3 rmsd) in purple (negative)  
and green (positive)

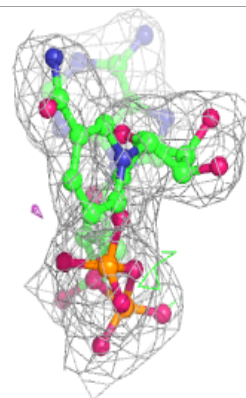
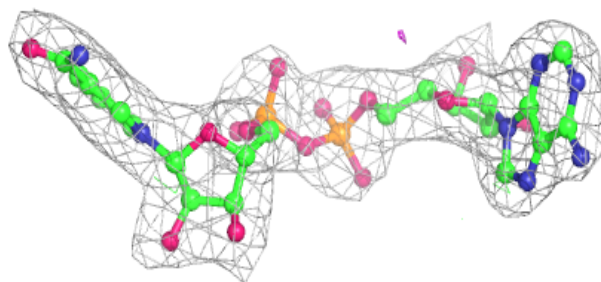
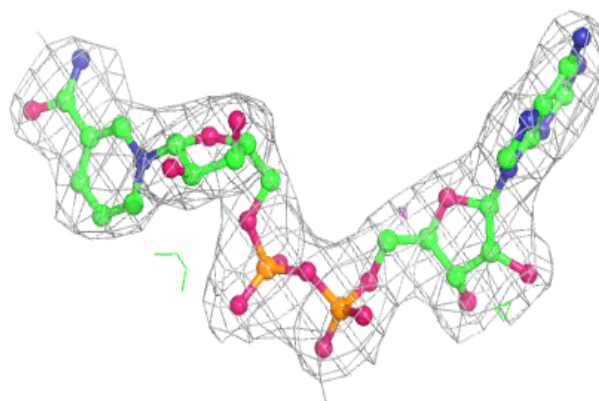
**Electron density around NAD D 501:**

$2mF_o-DF_c$  (at 0.7 rmsd) in gray  
 $mF_o-DF_c$  (at 3 rmsd) in purple (negative)  
and green (positive)

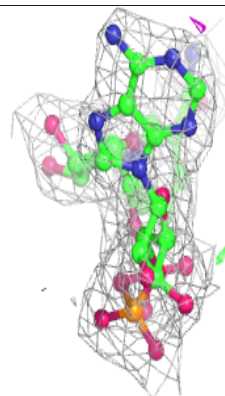
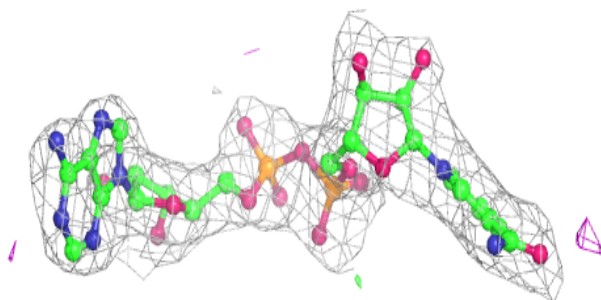
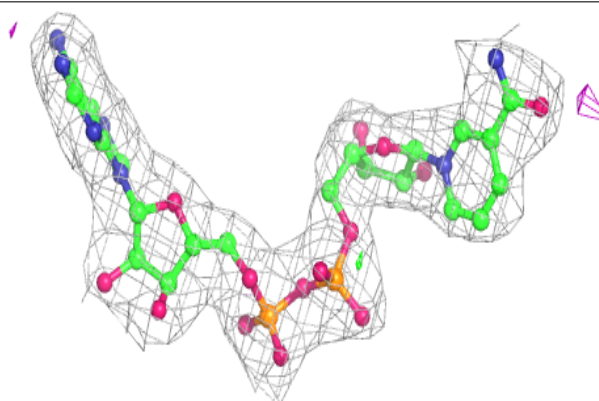


**Electron density around NAD F 501:**

$2mF_o-DF_c$  (at 0.7 rmsd) in gray  
 $mF_o-DF_c$  (at 3 rmsd) in purple (negative)  
and green (positive)

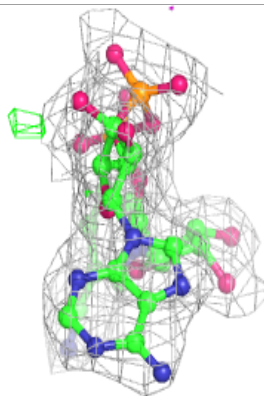
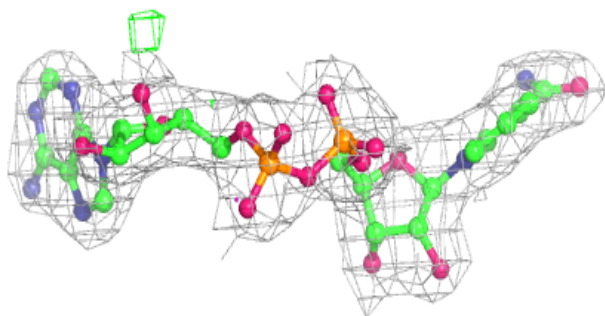
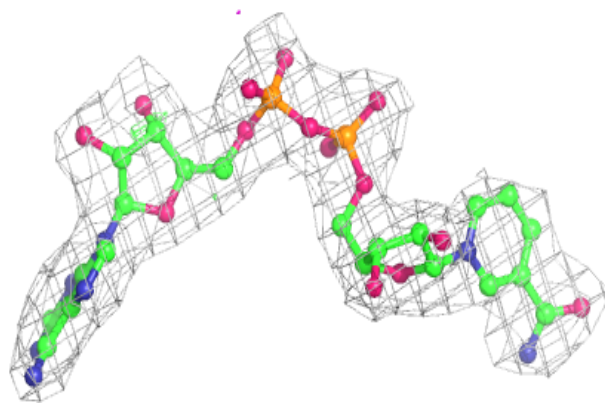
**Electron density around NAD B 501:**

$2mF_o-DF_c$  (at 0.7 rmsd) in gray  
 $mF_o-DF_c$  (at 3 rmsd) in purple (negative)  
and green (positive)

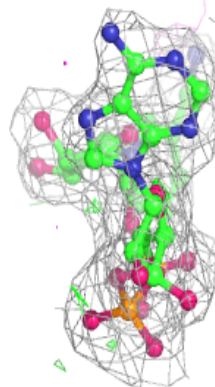
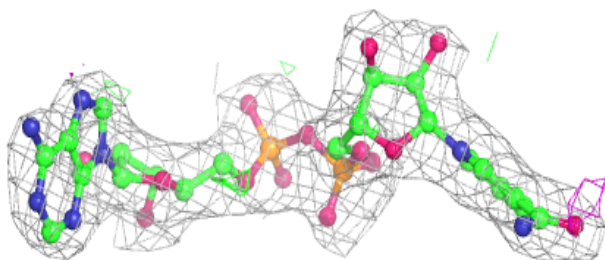
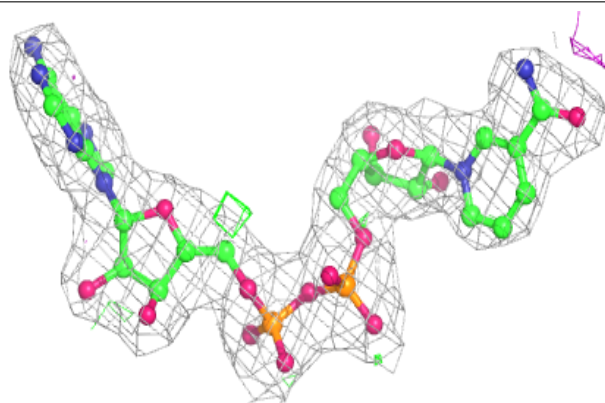


**Electron density around NAD A 501:**

$2mF_o-DF_c$  (at 0.7 rmsd) in gray  
 $mF_o-DF_c$  (at 3 rmsd) in purple (negative)  
and green (positive)

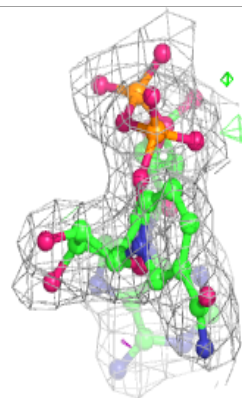
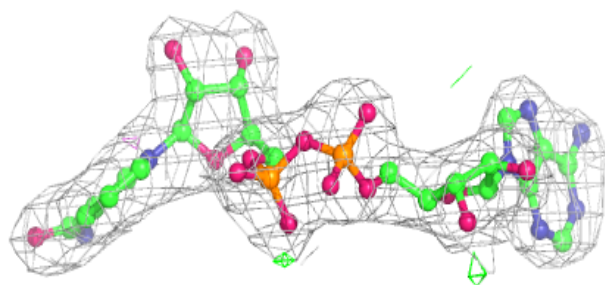
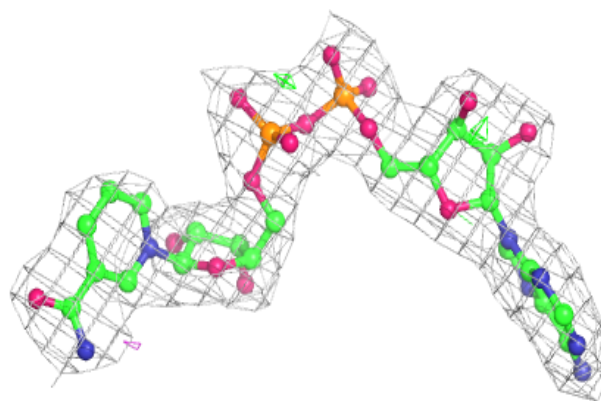
**Electron density around NAD E 501:**

$2mF_o-DF_c$  (at 0.7 rmsd) in gray  
 $mF_o-DF_c$  (at 3 rmsd) in purple (negative)  
and green (positive)

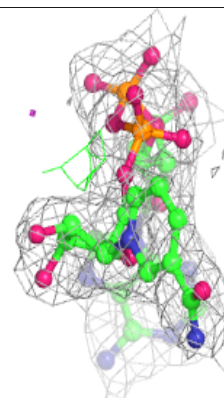
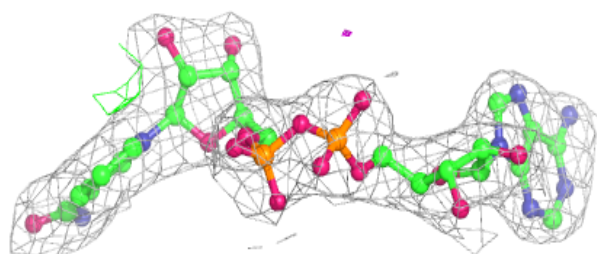
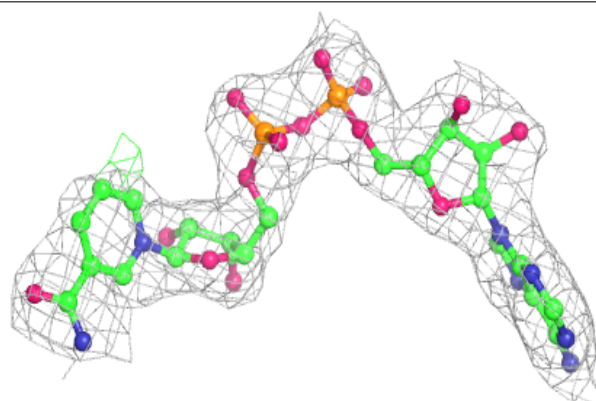


**Electron density around NAD G 501:**

$2mF_o-DF_c$  (at 0.7 rmsd) in gray  
 $mF_o-DF_c$  (at 3 rmsd) in purple (negative)  
and green (positive)

**Electron density around NAD H 501:**

$2mF_o-DF_c$  (at 0.7 rmsd) in gray  
 $mF_o-DF_c$  (at 3 rmsd) in purple (negative)  
and green (positive)



## 6.5 Other polymers [i](#)

There are no such residues in this entry.