



Full wwPDB X-ray Structure Validation Report ⓘ

Aug 9, 2020 – 12:44 PM BST

PDB ID : 6UT0
Title : Identification of the Clinical Development Candidate MRTX849, a Covalent KRASG12C Inhibitor for the Treatment of Cancer
Authors : Vigers, G.P.; Smith, D.J.
Deposited on : 2019-10-29
Resolution : 1.94 Å(reported)

This is a Full wwPDB X-ray Structure Validation Report for a publicly released PDB entry.

We welcome your comments at validation@mail.wwpdb.org

A user guide is available at

<https://www.wwpdb.org/validation/2017/XrayValidationReportHelp>

with specific help available everywhere you see the ⓘ symbol.

The following versions of software and data (see [references ⓘ](#)) were used in the production of this report:

MolProbity : 4.02b-467
Mogul : 1.8.5 (274361), CSD as541be (2020)
Xtriage (Phenix) : 1.13
EDS : 2.13.1
buster-report : 1.1.7 (2018)
Percentile statistics : 20191225.v01 (using entries in the PDB archive December 25th 2019)
Refmac : 5.8.0158
CCP4 : 7.0.044 (Gargrove)
Ideal geometry (proteins) : Engh & Huber (2001)
Ideal geometry (DNA, RNA) : Parkinson et al. (1996)
Validation Pipeline (wwPDB-VP) : 2.13.1

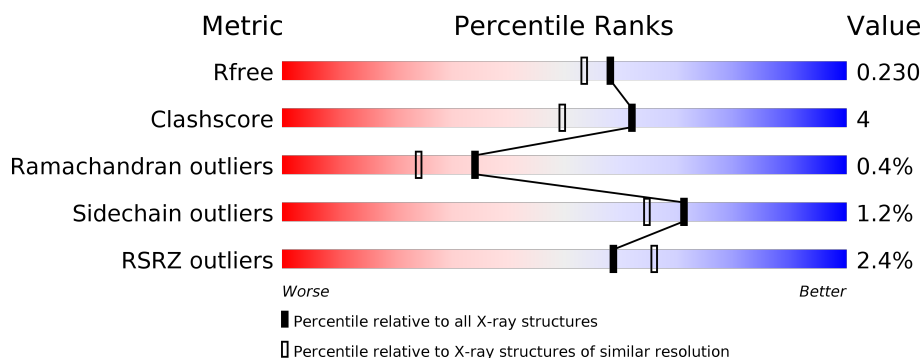
1 Overall quality at a glance

The following experimental techniques were used to determine the structure:

X-RAY DIFFRACTION

The reported resolution of this entry is 1.94 Å.

Percentile scores (ranging between 0-100) for global validation metrics of the entry are shown in the following graphic. The table shows the number of entries on which the scores are based.



Metric	Whole archive (#Entries)	Similar resolution (#Entries, resolution range(Å))
R_{free}	130704	4310 (1.96-1.92)
Clashscore	141614	1023 (1.94-1.94)
Ramachandran outliers	138981	1007 (1.94-1.94)
Sidechain outliers	138945	1007 (1.94-1.94)
RSRZ outliers	127900	4250 (1.96-1.92)

The table below summarises the geometric issues observed across the polymeric chains and their fit to the electron density. The red, orange, yellow and green segments on the lower bar indicate the fraction of residues that contain outliers for ≥ 3 , 2, 1 and 0 types of geometric quality criteria respectively. A grey segment represents the fraction of residues that are not modelled. The numeric value for each fraction is indicated below the corresponding segment, with a dot representing fractions $\leq 5\%$. The upper red bar (where present) indicates the fraction of residues that have poor fit to the electron density. The numeric value is given above the bar.

Mol	Chain	Length	Quality of chain
1	A	170	<div> <div>3%</div> <div> <div></div> <div>93%</div> <div>6% ..</div> </div> </div>
1	B	170	<div> <div>2%</div> <div> <div></div> <div>90%</div> <div>9% .</div> </div> </div>
1	C	170	<div> <div>2%</div> <div> <div></div> <div>89%</div> <div>11%</div> </div> </div>
1	D	170	<div> <div>3%</div> <div> <div></div> <div>89%</div> <div>11%</div> </div> </div>

2 Entry composition

There are 5 unique types of molecules in this entry. The entry contains 11583 atoms, of which 5426 are hydrogens and 0 are deuteriums.

In the tables below, the ZeroOcc column contains the number of atoms modelled with zero occupancy, the AltConf column contains the number of residues with at least one atom in alternate conformation and the Trace column contains the number of residues modelled with at most 2 atoms.

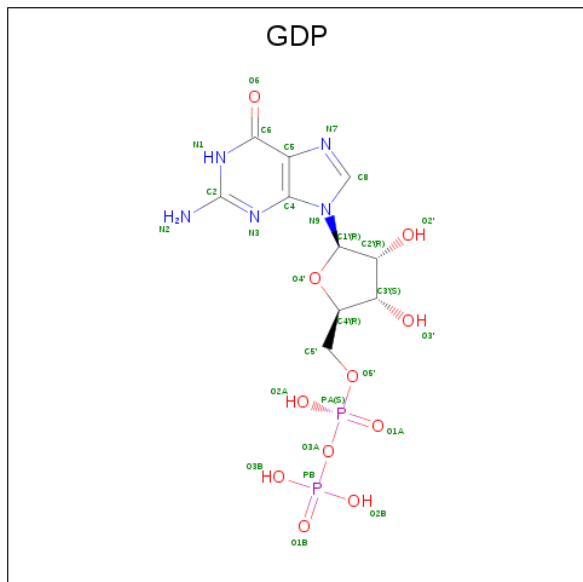
- Molecule 1 is a protein called GTPase KRas.

Mol	Chain	Residues	Atoms						ZeroOcc	AltConf	Trace
1	A	169	Total	C	H	N	O	S	64	0	0
			2699	849	1344	232	269	5			
1	B	168	Total	C	H	N	O	S	64	1	0
			2678	843	1333	230	267	5			
1	C	170	Total	C	H	N	O	S	64	1	0
			2716	854	1352	233	272	5			
1	D	170	Total	C	H	N	O	S	64	0	0
			2708	851	1349	233	270	5			

There are 20 discrepancies between the modelled and reference sequences:

Chain	Residue	Modelled	Actual	Comment	Reference
A	0	GLY	-	expression tag	UNP P01116
A	12	CYS	GLY	variant	UNP P01116
A	51	SER	CYS	engineered mutation	UNP P01116
A	80	LEU	CYS	engineered mutation	UNP P01116
A	118	SER	CYS	engineered mutation	UNP P01116
B	0	GLY	-	expression tag	UNP P01116
B	12	CYS	GLY	variant	UNP P01116
B	51	SER	CYS	engineered mutation	UNP P01116
B	80	LEU	CYS	engineered mutation	UNP P01116
B	118	SER	CYS	engineered mutation	UNP P01116
C	0	GLY	-	expression tag	UNP P01116
C	12	CYS	GLY	variant	UNP P01116
C	51	SER	CYS	engineered mutation	UNP P01116
C	80	LEU	CYS	engineered mutation	UNP P01116
C	118	SER	CYS	engineered mutation	UNP P01116
D	0	GLY	-	expression tag	UNP P01116
D	12	CYS	GLY	variant	UNP P01116
D	51	SER	CYS	engineered mutation	UNP P01116
D	80	LEU	CYS	engineered mutation	UNP P01116
D	118	SER	CYS	engineered mutation	UNP P01116

- Molecule 2 is GUANOSINE-5'-DIPHOSPHATE (three-letter code: GDP) (formula: $C_{10}H_{15}N_5O_{11}P_2$).

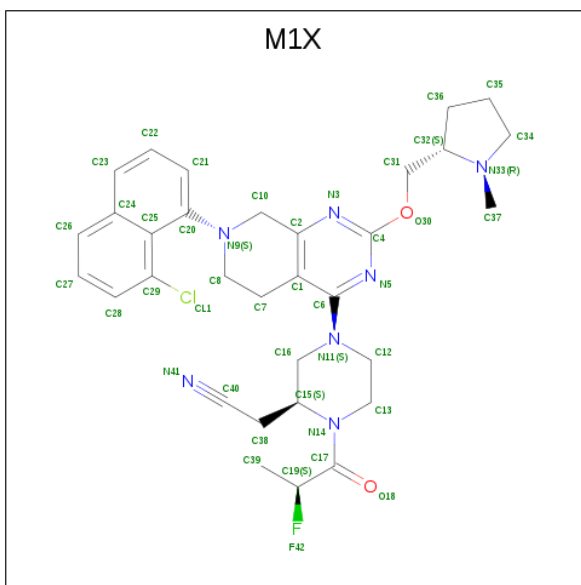


Mol	Chain	Residues	Atoms						ZeroOcc	AltConf
2	A	1	Total	C	H	N	O	P	2	0
			40	10	12	5	11	2		
2	B	1	Total	C	H	N	O	P	2	0
			40	10	12	5	11	2		
2	C	1	Total	C	H	N	O	P	2	0
			40	10	12	5	11	2		
2	D	1	Total	C	H	N	O	P	2	0
			40	10	12	5	11	2		

- Molecule 3 is MAGNESIUM ION (three-letter code: MG) (formula: Mg).

Mol	Chain	Residues	Atoms		ZeroOcc	AltConf
3	B	1	Total	Mg	0	0
			1	1		
3	A	1	Total	Mg	0	0
			1	1		
3	D	1	Total	Mg	0	0
			1	1		
3	C	1	Total	Mg	0	0
			1	1		

- Molecule 4 is {(2S)-4-[7-(8-chloronaphthalen-1-yl)-2-[[[(2S)-1-methylpyrrolidin-2-yl]methoxy]-5,6,7,8-tetrahydropyrido[3,4-d]pyrimidin-4-yl]-1-[(2S)-2-fluoropropanoyl]piperazin-2-yl}acetonitrile (three-letter code: M1X) (formula: $C_{32}H_{37}ClFN_7O_2$) (labeled as "Ligand of Interest" by author).



Mol	Chain	Residues	Atoms						ZeroOcc	AltConf
4	A	1	Total 43	C 32	Cl 1	F 1	N 7	O 2	0	0
4	B	1	Total 43	C 32	Cl 1	F 1	N 7	O 2	0	0
4	C	1	Total 43	C 32	Cl 1	F 1	N 7	O 2	0	0
4	D	1	Total 43	C 32	Cl 1	F 1	N 7	O 2	0	0

- Molecule 5 is water.

Mol	Chain	Residues	Atoms	ZeroOcc	AltConf
5	A	108	Total O 108 108	0	0
5	B	125	Total O 125 125	0	0
5	C	130	Total O 130 130	0	0
5	D	83	Total O 83 83	0	0

3 Residue-property plots [i](#)

These plots are drawn for all protein, RNA, DNA and oligosaccharide chains in the entry. The first graphic for a chain summarises the proportions of the various outlier classes displayed in the second graphic. The second graphic shows the sequence view annotated by issues in geometry and electron density. Residues are color-coded according to the number of geometric quality criteria for which they contain at least one outlier: green = 0, yellow = 1, orange = 2 and red = 3 or more. A red dot above a residue indicates a poor fit to the electron density ($RSRZ > 2$). Stretches of 2 or more consecutive residues without any outlier are shown as a green connector. Residues present in the sample, but not in the model, are shown in grey.

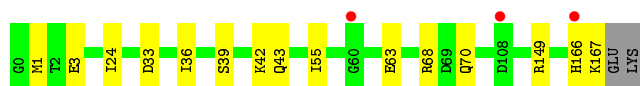
- Molecule 1: GTPase KRas

Chain A: 

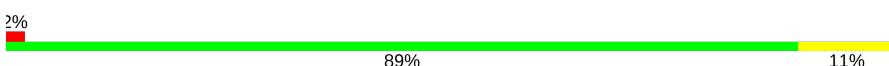


- Molecule 1: GTPase KRas

Chain B: 




- Molecule 1: GTPase KRas

Chain C: 



- Molecule 1: GTPase KRas

Chain D: 



4 Data and refinement statistics

Property	Value	Source
Space group	P 1 21 1	Depositor
Cell constants a, b, c, α , β , γ	74.92Å 61.80Å 76.05Å 90.00° 111.37° 90.00°	Depositor
Resolution (Å)	28.32 – 1.94 28.32 – 1.94	Depositor EDS
% Data completeness (in resolution range)	96.3 (28.32-1.94) 96.4 (28.32-1.94)	Depositor EDS
R_{merge}	0.08	Depositor
R_{sym}	(Not available)	Depositor
$\langle I/\sigma(I) \rangle$ ¹	4.35 (at 1.93Å)	Xtriage
Refinement program	REFMAC 5.8.0253	Depositor
R, R_{free}	0.175 , 0.222 0.185 , 0.230	Depositor DCC
R_{free} test set	2375 reflections (5.12%)	wwPDB-VP
Wilson B-factor (Å ²)	14.9	Xtriage
Anisotropy	0.464	Xtriage
Bulk solvent k_{sol} (e/Å ³), B_{sol} (Å ²)	0.43 , 45.2	EDS
L-test for twinning ²	$\langle L \rangle = 0.49$, $\langle L^2 \rangle = 0.33$	Xtriage
Estimated twinning fraction	0.017 for l,-k,h	Xtriage
F_o, F_c correlation	0.95	EDS
Total number of atoms	11583	wwPDB-VP
Average B, all atoms (Å ²)	22.0	wwPDB-VP

Xtriage's analysis on translational NCS is as follows: *The largest off-origin peak in the Patterson function is 16.86% of the height of the origin peak. No significant pseudotranslation is detected.*

¹Intensities estimated from amplitudes.

²Theoretical values of $\langle |L| \rangle$, $\langle L^2 \rangle$ for acentric reflections are 0.5, 0.333 respectively for untwinned datasets, and 0.375, 0.2 for perfectly twinned datasets.

5 Model quality [i](#)

5.1 Standard geometry [i](#)

Bond lengths and bond angles in the following residue types are not validated in this section: GDP, M1X, MG

The Z score for a bond length (or angle) is the number of standard deviations the observed value is removed from the expected value. A bond length (or angle) with $|Z| > 5$ is considered an outlier worth inspection. RMSZ is the root-mean-square of all Z scores of the bond lengths (or angles).

Mol	Chain	Bond lengths		Bond angles	
		RMSZ	$\# Z > 5$	RMSZ	$\# Z > 5$
1	A	0.74	0/1376	0.88	1/1854 (0.1%)
1	B	0.74	0/1369	0.90	0/1847
1	C	0.76	0/1388	0.92	2/1870 (0.1%)
1	D	0.70	0/1380	0.87	2/1859 (0.1%)
All	All	0.74	0/5513	0.89	5/7430 (0.1%)

There are no bond length outliers.

All (5) bond angle outliers are listed below:

Mol	Chain	Res	Type	Atoms	Z	Observed(°)	Ideal(°)
1	D	137	TYR	CB-CG-CD2	-5.76	117.54	121.00
1	D	137	TYR	CB-CG-CD1	5.46	124.28	121.00
1	A	68	ARG	NE-CZ-NH1	-5.33	117.64	120.30
1	C	137	TYR	CB-CG-CD1	5.25	124.15	121.00
1	C	157	TYR	CB-CG-CD2	-5.09	117.95	121.00

There are no chirality outliers.

There are no planarity outliers.

5.2 Too-close contacts [i](#)

In the following table, the Non-H and H(model) columns list the number of non-hydrogen atoms and hydrogen atoms in the chain respectively. The H(added) column lists the number of hydrogen atoms added and optimized by MolProbity. The Clashes column lists the number of clashes within the asymmetric unit, whereas Symm-Clashes lists symmetry related clashes.

Mol	Chain	Non-H	H(model)	H(added)	Clashes	Symm-Clashes
1	A	1355	1344	1340	7	0
1	B	1345	1333	1328	14	1

Continued on next page...

Continued from previous page...

Mol	Chain	Non-H	H(model)	H(added)	Clashes	Symm-Clashes
1	C	1364	1352	1347	9	1
1	D	1359	1349	1343	11	0
2	A	28	12	12	0	0
2	B	28	12	12	0	0
2	C	28	12	12	0	0
2	D	28	12	12	0	0
3	A	1	0	0	0	0
3	B	1	0	0	0	0
3	C	1	0	0	0	0
3	D	1	0	0	0	0
4	A	43	0	0	2	0
4	B	43	0	0	2	0
4	C	43	0	0	4	0
4	D	43	0	0	1	0
5	A	108	0	0	3	0
5	B	125	0	0	9	0
5	C	130	0	0	2	0
5	D	83	0	0	3	0
All	All	6157	5426	5406	49	1

The all-atom clashscore is defined as the number of clashes found per 1000 atoms (including hydrogen atoms). The all-atom clashscore for this structure is 4.

All (49) close contacts within the same asymmetric unit are listed below, sorted by their clash magnitude.

Atom-1	Atom-2	Interatomic distance (Å)	Clash overlap (Å)
1:D:164:ARG:O	1:D:168:GLU:HG2	1.79	0.82
1:A:126:ASP:HB3	5:A:379:HOH:O	1.83	0.77
1:C:42:LYS:HE3	1:C:44:VAL:CG1	2.18	0.73
1:C:41:ARG:HD2	5:C:419:HOH:O	1.93	0.68
5:C:331:HOH:O	1:D:2:THR:HG22	1.93	0.68
1:D:38:ASP:HB2	5:D:302:HOH:O	1.92	0.68
1:B:149:ARG:CZ	5:B:301:HOH:O	2.44	0.66
1:B:149:ARG:HG2	5:B:312:HOH:O	1.96	0.64
1:A:37:GLU:OE1	1:A:68:ARG:NH1	2.31	0.63
1:B:149:ARG:NH1	5:B:301:HOH:O	2.31	0.62
1:C:32:TYR:HH	1:C:40:TYR:HH	1.50	0.60
4:A:203:M1X:C16	4:A:203:M1X:C7	2.84	0.56
4:C:203:M1X:C13	4:C:203:M1X:F42	2.47	0.52
1:C:42:LYS:HE3	1:C:44:VAL:HG11	1.89	0.52
1:B:166:HIS:CD2	5:B:384:HOH:O	2.63	0.52

Continued on next page...

Continued from previous page...

Atom-1	Atom-2	Interatomic distance (Å)	Clash overlap (Å)
1:C:24:ILE:HD11	1:C:55:ILE:HD12	1.91	0.52
1:D:1:MET:CE	1:D:43:GLN:NE2	2.73	0.52
1:B:70:GLN:HG3	5:B:377:HOH:O	2.10	0.51
4:C:203:M1X:N9	4:C:203:M1X:CL1	2.81	0.51
1:A:123:ARG:HB2	5:A:306:HOH:O	2.11	0.50
4:C:203:M1X:C7	4:C:203:M1X:C16	2.89	0.50
1:B:149:ARG:CG	5:B:312:HOH:O	2.59	0.49
1:A:131:GLN:NE2	5:A:305:HOH:O	2.46	0.49
1:B:63:GLU:OE2	1:B:68:ARG:HD3	2.13	0.48
4:A:203:M1X:CL1	4:A:203:M1X:N9	2.84	0.47
1:D:39:SER:HA	1:D:55:ILE:O	2.15	0.46
4:B:203:M1X:CL1	4:B:203:M1X:N9	2.85	0.46
4:D:203:M1X:C7	4:D:203:M1X:C16	2.93	0.46
1:B:63:GLU:OE2	1:B:68:ARG:HB2	2.16	0.45
1:D:42:LYS:HE3	1:D:44:VAL:HG12	1.99	0.45
1:B:39:SER:HA	1:B:55:ILE:O	2.17	0.45
1:A:56:LEU:HD22	1:A:71:TYR:CE2	2.52	0.45
1:B:24:ILE:HD13	1:B:42:LYS:HB2	1.98	0.44
1:C:39:SER:HA	1:C:55:ILE:O	2.17	0.44
1:D:42:LYS:HE3	1:D:44:VAL:CG1	2.47	0.44
1:B:33:ASP:HB3	1:B:36:ILE:HD12	1.99	0.44
1:C:20:THR:O	1:C:24:ILE:HG12	2.17	0.44
1:B:167:LYS:C	5:B:349:HOH:O	2.55	0.44
1:D:109:VAL:HG23	5:D:363:HOH:O	2.18	0.43
4:B:203:M1X:C16	4:B:203:M1X:C7	2.97	0.42
4:C:203:M1X:C10	4:C:203:M1X:CL1	3.05	0.42
1:A:142:ILE:HD11	1:C:70:GLN:NE2	2.35	0.42
1:B:166:HIS:CG	5:B:384:HOH:O	2.72	0.41
1:D:52:LEU:HD13	1:D:52:LEU:C	2.40	0.41
1:B:43:GLN:NE2	5:B:308:HOH:O	2.48	0.40
1:D:3:GLU:HG2	5:D:336:HOH:O	2.22	0.40
1:A:63:GLU:OE2	1:A:68:ARG:HD2	2.20	0.40
1:C:23:LEU:HD22	1:C:156:PHE:CG	2.57	0.40
1:D:101:LYS:HE3	1:D:107:GLU:OE1	2.21	0.40

All (1) symmetry-related close contacts are listed below. The label for Atom-2 includes the symmetry operator and encoded unit-cell translations to be applied.

Atom-1	Atom-2	Interatomic distance (Å)	Clash overlap (Å)
1:B:3:GLU:OE2	1:C:27:HIS:HE2[2_545]	1.59	0.01

5.3 Torsion angles

5.3.1 Protein backbone

In the following table, the Percentiles column shows the percent Ramachandran outliers of the chain as a percentile score with respect to all X-ray entries followed by that with respect to entries of similar resolution.

The Analysed column shows the number of residues for which the backbone conformation was analysed, and the total number of residues.

Mol	Chain	Analysed	Favoured	Allowed	Outliers	Percentiles	
1	A	167/170 (98%)	163 (98%)	3 (2%)	1 (1%)	25	13
1	B	167/170 (98%)	161 (96%)	6 (4%)	0	100	100
1	C	169/170 (99%)	165 (98%)	3 (2%)	1 (1%)	25	13
1	D	168/170 (99%)	160 (95%)	7 (4%)	1 (1%)	25	13
All	All	671/680 (99%)	649 (97%)	19 (3%)	3 (0%)	34	24

All (3) Ramachandran outliers are listed below:

Mol	Chain	Res	Type
1	A	59	ALA
1	C	59	ALA
1	D	59	ALA

5.3.2 Protein sidechains

In the following table, the Percentiles column shows the percent sidechain outliers of the chain as a percentile score with respect to all X-ray entries followed by that with respect to entries of similar resolution.

The Analysed column shows the number of residues for which the sidechain conformation was analysed, and the total number of residues.

Mol	Chain	Analysed	Rotameric	Outliers	Percentiles	
1	A	150/150 (100%)	148 (99%)	2 (1%)	69	62
1	B	149/150 (99%)	148 (99%)	1 (1%)	84	81
1	C	151/150 (101%)	149 (99%)	2 (1%)	69	62
1	D	150/150 (100%)	148 (99%)	2 (1%)	69	62
All	All	600/600 (100%)	593 (99%)	7 (1%)	71	64

All (7) residues with a non-rotameric sidechain are listed below:

Mol	Chain	Res	Type
1	A	31	GLU
1	A	68	ARG
1	B	1	MET
1	C	1	MET
1	C	101	LYS
1	D	27	HIS
1	D	30	ASP

Some sidechains can be flipped to improve hydrogen bonding and reduce clashes. All (7) such sidechains are listed below:

Mol	Chain	Res	Type
1	A	43	GLN
1	A	131	GLN
1	B	43	GLN
1	B	131	GLN
1	B	166	HIS
1	D	43	GLN
1	D	131	GLN

5.3.3 RNA [i](#)

There are no RNA molecules in this entry.

5.4 Non-standard residues in protein, DNA, RNA chains [i](#)

There are no non-standard protein/DNA/RNA residues in this entry.

5.5 Carbohydrates [i](#)

There are no monosaccharides in this entry.

5.6 Ligand geometry [i](#)

Of 12 ligands modelled in this entry, 4 are monoatomic - leaving 8 for Mogul analysis.

In the following table, the Counts columns list the number of bonds (or angles) for which Mogul statistics could be retrieved, the number of bonds (or angles) that are observed in the model and the number of bonds (or angles) that are defined in the Chemical Component Dictionary. The Link column lists molecule types, if any, to which the group is linked. The Z score for a bond length (or angle) is the number of standard deviations the observed value is removed from the

expected value. A bond length (or angle) with $|Z| > 2$ is considered an outlier worth inspection. RMSZ is the root-mean-square of all Z scores of the bond lengths (or angles).

Mol	Type	Chain	Res	Link	Bond lengths			Bond angles		
					Counts	RMSZ	# $ Z > 2$	Counts	RMSZ	# $ Z > 2$
2	GDP	B	201	3	24,30,30	1.45	3 (12%)	31,47,47	1.82	7 (22%)
4	M1X	B	203	1	47,48,48	1.53	9 (19%)	53,69,69	2.09	15 (28%)
4	M1X	D	203	1	47,48,48	1.65	8 (17%)	53,69,69	2.19	15 (28%)
2	GDP	D	201	3	24,30,30	1.10	2 (8%)	31,47,47	2.04	11 (35%)
4	M1X	A	203	1	47,48,48	1.37	7 (14%)	53,69,69	1.92	14 (26%)
2	GDP	C	201	3	24,30,30	1.21	3 (12%)	31,47,47	2.21	8 (25%)
4	M1X	C	203	1	47,48,48	1.45	8 (17%)	53,69,69	2.00	18 (33%)
2	GDP	A	201	3	24,30,30	1.13	1 (4%)	31,47,47	2.25	6 (19%)

In the following table, the Chirals column lists the number of chiral outliers, the number of chiral centers analysed, the number of these observed in the model and the number defined in the Chemical Component Dictionary. Similar counts are reported in the Torsion and Rings columns. '-' means no outliers of that kind were identified.

Mol	Type	Chain	Res	Link	Chirals	Torsions	Rings
2	GDP	B	201	3	-	3/12/32/32	0/3/3/3
4	M1X	B	203	1	-	5/23/56/56	0/6/6/6
4	M1X	D	203	1	-	2/23/56/56	0/6/6/6
2	GDP	D	201	3	-	1/12/32/32	0/3/3/3
4	M1X	A	203	1	-	4/23/56/56	0/6/6/6
2	GDP	C	201	3	-	0/12/32/32	0/3/3/3
4	M1X	C	203	1	-	2/23/56/56	0/6/6/6
2	GDP	A	201	3	-	1/12/32/32	0/3/3/3

All (41) bond length outliers are listed below:

Mol	Chain	Res	Type	Atoms	Z	Observed(Å)	Ideal(Å)
4	D	203	M1X	F42-C19	-4.82	1.33	1.40
4	B	203	M1X	O30-C4	4.66	1.39	1.34
2	B	201	GDP	C6-C5	4.48	1.49	1.41
4	D	203	M1X	O30-C4	4.26	1.39	1.34
4	C	203	M1X	C32-N33	4.03	1.53	1.48
4	B	203	M1X	F42-C19	-3.95	1.34	1.40
4	D	203	M1X	C32-N33	3.95	1.53	1.48
4	C	203	M1X	C6-N11	3.28	1.45	1.37
4	D	203	M1X	C6-N11	3.20	1.45	1.37

Continued on next page...

Continued from previous page...

Mol	Chain	Res	Type	Atoms	Z	Observed(Å)	Ideal(Å)
4	A	203	M1X	F42-C19	-3.17	1.36	1.40
4	D	203	M1X	C38-C40	3.10	1.52	1.46
2	D	201	GDP	C6-C5	3.07	1.46	1.41
2	C	201	GDP	C2'-C1'	-2.99	1.49	1.53
4	A	203	M1X	C6-N11	2.98	1.45	1.37
2	A	201	GDP	C6-C5	2.94	1.46	1.41
4	A	203	M1X	O30-C4	2.91	1.37	1.34
4	A	203	M1X	C37-N33	2.87	1.52	1.46
4	C	203	M1X	C13-N14	2.80	1.51	1.47
2	B	201	GDP	O4'-C1'	2.70	1.44	1.41
2	D	201	GDP	C5-C4	2.63	1.47	1.40
4	B	203	M1X	C37-N33	2.63	1.52	1.46
4	D	203	M1X	C37-N33	2.62	1.52	1.46
2	B	201	GDP	C5-C4	2.61	1.47	1.40
4	A	203	M1X	C32-N33	2.58	1.51	1.48
4	A	203	M1X	C39-C19	2.56	1.54	1.50
4	C	203	M1X	C7-C1	2.55	1.55	1.51
4	C	203	M1X	C28-C29	2.46	1.42	1.36
2	C	201	GDP	C5-C4	2.33	1.47	1.40
4	B	203	M1X	C21-C20	2.32	1.42	1.38
4	B	203	M1X	C34-N33	2.32	1.53	1.46
4	A	203	M1X	C34-N33	2.25	1.53	1.46
2	C	201	GDP	C2-N2	2.23	1.38	1.33
4	D	203	M1X	C28-C29	2.13	1.41	1.36
4	B	203	M1X	C39-C19	2.13	1.53	1.50
4	C	203	M1X	C37-N33	2.12	1.51	1.46
4	B	203	M1X	C22-C23	2.09	1.41	1.36
4	C	203	M1X	C22-C23	2.09	1.41	1.36
4	B	203	M1X	C31-C32	2.05	1.57	1.52
4	B	203	M1X	C32-N33	2.05	1.51	1.48
4	D	203	M1X	C34-N33	2.04	1.52	1.46
4	C	203	M1X	C39-C19	2.02	1.53	1.50

All (94) bond angle outliers are listed below:

Mol	Chain	Res	Type	Atoms	Z	Observed(°)	Ideal(°)
4	D	203	M1X	C10-N9-C20	-6.79	105.64	117.38
4	D	203	M1X	F42-C19-C39	6.71	114.37	108.70
4	B	203	M1X	C10-N9-C20	-6.45	106.23	117.38
4	A	203	M1X	C10-N9-C20	-6.26	106.55	117.38
4	B	203	M1X	C29-C25-C24	6.06	117.71	114.93
2	A	201	GDP	C6-C5-C4	-5.86	115.21	120.80

Continued on next page...

Continued from previous page...

Mol	Chain	Res	Type	Atoms	Z	Observed(°)	Ideal(°)
2	C	201	GDP	C6-N1-C2	5.83	125.19	115.93
2	A	201	GDP	C6-N1-C2	5.53	124.71	115.93
4	C	203	M1X	C10-N9-C20	-5.24	108.31	117.38
2	C	201	GDP	N3-C2-N1	-5.17	120.33	127.22
4	C	203	M1X	C6-C1-C2	5.04	118.33	115.80
2	C	201	GDP	C5-C6-N1	-4.94	116.68	123.43
2	B	201	GDP	C5-C6-N1	-4.91	116.72	123.43
2	D	201	GDP	C6-N1-C2	4.79	123.54	115.93
2	D	201	GDP	C5-C6-N1	-4.70	117.00	123.43
2	A	201	GDP	C2-N3-C4	4.67	120.69	115.36
4	A	203	M1X	C29-C25-C24	4.67	117.07	114.93
2	D	201	GDP	C6-C5-C4	-4.63	116.38	120.80
2	A	201	GDP	N3-C2-N1	-4.57	121.12	127.22
2	A	201	GDP	C5-C6-N1	-4.47	117.32	123.43
2	B	201	GDP	C6-N1-C2	4.45	123.01	115.93
4	D	203	M1X	C21-C20-N9	-4.13	116.54	122.18
2	C	201	GDP	C2-N3-C4	3.99	119.92	115.36
4	D	203	M1X	C6-C1-C2	3.81	117.71	115.80
4	C	203	M1X	C39-C19-C17	-3.81	105.39	110.88
4	B	203	M1X	C12-C13-N14	-3.79	103.40	110.46
4	C	203	M1X	C1-C2-N3	-3.76	120.32	123.49
4	B	203	M1X	C1-C2-N3	-3.71	120.36	123.49
2	B	201	GDP	C6-C5-C4	-3.69	117.28	120.80
4	D	203	M1X	C7-C8-N9	-3.64	98.83	110.63
4	A	203	M1X	C8-C7-C1	-3.63	105.66	111.63
2	C	201	GDP	C6-C5-C4	-3.61	117.35	120.80
4	A	203	M1X	C21-C20-N9	-3.51	117.39	122.18
2	D	201	GDP	N3-C2-N1	-3.44	122.63	127.22
4	A	203	M1X	F42-C19-C39	3.39	111.57	108.70
4	D	203	M1X	C26-C24-C23	-3.27	115.53	123.19
4	A	203	M1X	C7-C1-C2	3.23	124.10	121.08
4	D	203	M1X	C7-C1-C2	-3.22	118.07	121.08
4	B	203	M1X	C6-C1-C2	3.16	117.38	115.80
4	C	203	M1X	C12-N11-C6	-3.10	108.27	119.05
4	B	203	M1X	C21-C20-N9	-3.09	117.97	122.18
4	C	203	M1X	C13-N14-C15	2.99	119.53	115.36
4	D	203	M1X	C26-C24-C25	2.93	124.14	118.27
2	B	201	GDP	C2-N3-C4	2.93	118.70	115.36
4	B	203	M1X	F42-C19-C39	2.90	111.15	108.70
4	A	203	M1X	C31-O30-C4	2.87	121.62	117.83
4	C	203	M1X	C10-C2-N3	2.85	121.50	116.44
4	C	203	M1X	C31-C32-N33	-2.72	104.52	111.33

Continued on next page...

Continued from previous page...

Mol	Chain	Res	Type	Atoms	Z	Observed(°)	Ideal(°)
4	B	203	M1X	C31-O30-C4	2.72	121.42	117.83
4	D	203	M1X	C28-C29-CL1	-2.66	112.05	118.57
2	D	201	GDP	C1'-N9-C4	-2.66	121.97	126.64
4	D	203	M1X	C1-C6-N5	-2.64	118.54	122.61
4	C	203	M1X	C10-C2-C1	-2.61	118.10	121.38
2	C	201	GDP	C4-C5-N7	-2.61	106.68	109.40
4	D	203	M1X	C1-C2-N3	-2.60	121.29	123.49
2	C	201	GDP	O3B-PB-O2B	2.56	117.44	107.64
4	B	203	M1X	C15-C16-N11	2.56	112.91	109.57
4	C	203	M1X	C12-N11-C16	2.55	119.98	112.55
4	C	203	M1X	C7-C1-C2	-2.54	118.70	121.08
2	D	201	GDP	C2-N3-C4	2.53	118.25	115.36
4	C	203	M1X	C7-C8-N9	-2.53	102.42	110.63
4	A	203	M1X	C35-C36-C32	2.53	110.56	104.68
4	B	203	M1X	C31-C32-N33	-2.47	105.16	111.33
4	C	203	M1X	C26-C27-C28	-2.43	117.11	120.99
4	C	203	M1X	C28-C29-CL1	-2.43	112.62	118.57
4	A	203	M1X	N3-C4-N5	-2.43	122.95	127.63
4	B	203	M1X	C26-C24-C23	-2.42	117.54	123.19
2	B	201	GDP	O4'-C4'-C3'	2.39	109.84	105.11
2	D	201	GDP	N2-C2-N1	2.38	120.96	117.25
4	B	203	M1X	C13-C12-N11	-2.38	106.08	110.70
4	C	203	M1X	C21-C20-N9	-2.37	118.95	122.18
2	B	201	GDP	N3-C2-N1	-2.32	124.13	127.22
4	D	203	M1X	N3-C4-N5	-2.31	123.18	127.63
4	A	203	M1X	C12-N11-C16	2.30	119.26	112.55
2	D	201	GDP	O3'-C3'-C4'	-2.29	104.41	111.05
4	B	203	M1X	C28-C29-CL1	-2.28	112.99	118.57
4	D	203	M1X	C16-N11-C6	-2.27	111.15	119.06
2	C	201	GDP	C1'-N9-C4	-2.23	122.72	126.64
2	A	201	GDP	O2A-PA-O1A	2.22	123.22	112.24
4	A	203	M1X	C16-N11-C6	-2.22	111.33	119.06
4	B	203	M1X	N3-C4-N5	-2.22	123.37	127.63
4	D	203	M1X	C31-C32-N33	-2.20	105.84	111.33
4	C	203	M1X	N5-C6-N11	2.20	120.37	116.80
4	C	203	M1X	C27-C26-C24	2.19	123.86	120.44
2	D	201	GDP	O5'-PA-O1A	2.15	117.45	109.07
2	B	201	GDP	PA-O3A-PB	-2.14	125.48	132.83
4	B	203	M1X	C7-C8-N9	-2.13	103.74	110.63
4	C	203	M1X	F42-C19-C39	2.12	110.49	108.70
2	D	201	GDP	C4-C5-N7	-2.09	107.22	109.40
2	D	201	GDP	O2'-C2'-C3'	2.06	118.50	111.82

Continued on next page...

Continued from previous page...

Mol	Chain	Res	Type	Atoms	Z	Observed(°)	Ideal(°)
4	A	203	M1X	O18-C17-N14	-2.06	117.71	121.38
4	A	203	M1X	C13-N14-C15	2.04	118.20	115.36
4	D	203	M1X	C12-N11-C6	-2.01	112.05	119.05
4	A	203	M1X	C26-C24-C23	-2.01	118.49	123.19

There are no chirality outliers.

All (18) torsion outliers are listed below:

Mol	Chain	Res	Type	Atoms
4	B	203	M1X	N14-C17-C19-F42
4	D	203	M1X	N14-C17-C19-F42
4	A	203	M1X	N14-C17-C19-F42
4	C	203	M1X	N14-C17-C19-F42
4	C	203	M1X	O18-C17-N14-C15
4	B	203	M1X	C21-C20-N9-C10
4	B	203	M1X	C21-C20-N9-C8
4	A	203	M1X	C21-C20-N9-C8
2	D	201	GDP	PA-O3A-PB-O3B
2	A	201	GDP	PA-O3A-PB-O2B
4	B	203	M1X	C25-C20-N9-C10
4	A	203	M1X	C25-C20-N9-C8
4	A	203	M1X	C21-C20-N9-C10
4	B	203	M1X	C25-C20-N9-C8
2	B	201	GDP	PA-O3A-PB-O2B
2	B	201	GDP	PA-O3A-PB-O3B
4	D	203	M1X	C21-C20-N9-C10
2	B	201	GDP	PA-O3A-PB-O1B

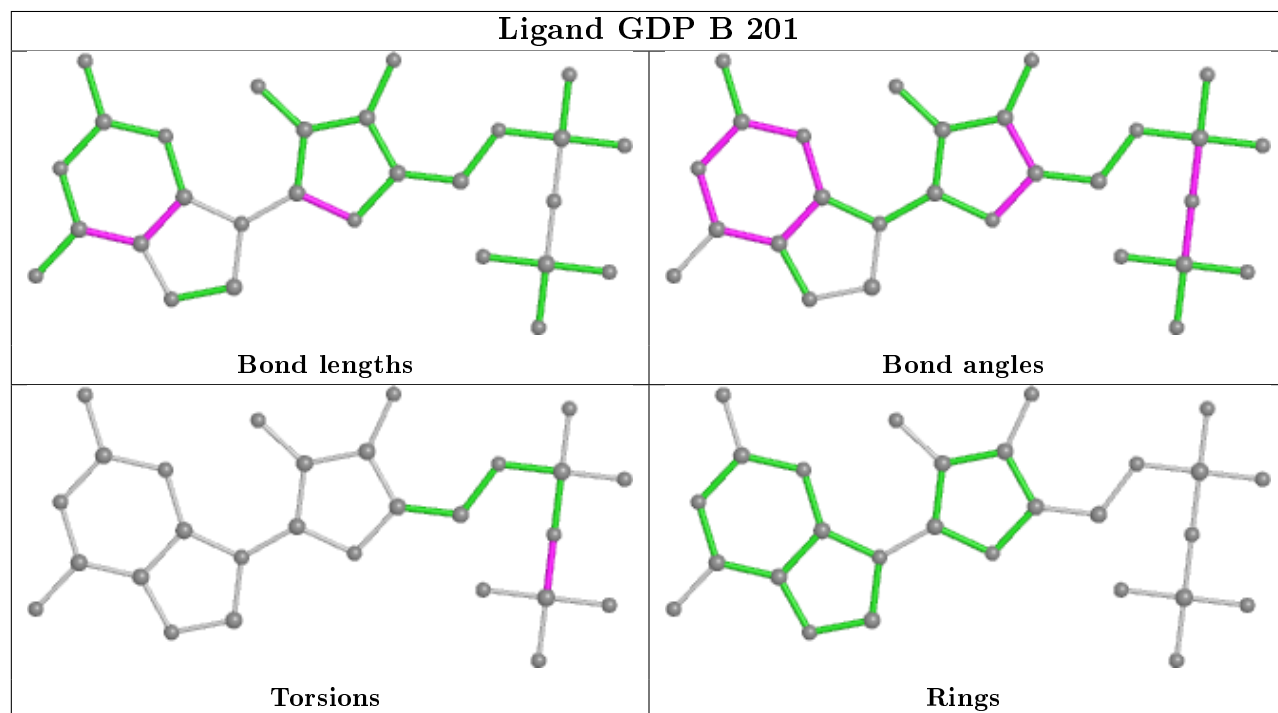
There are no ring outliers.

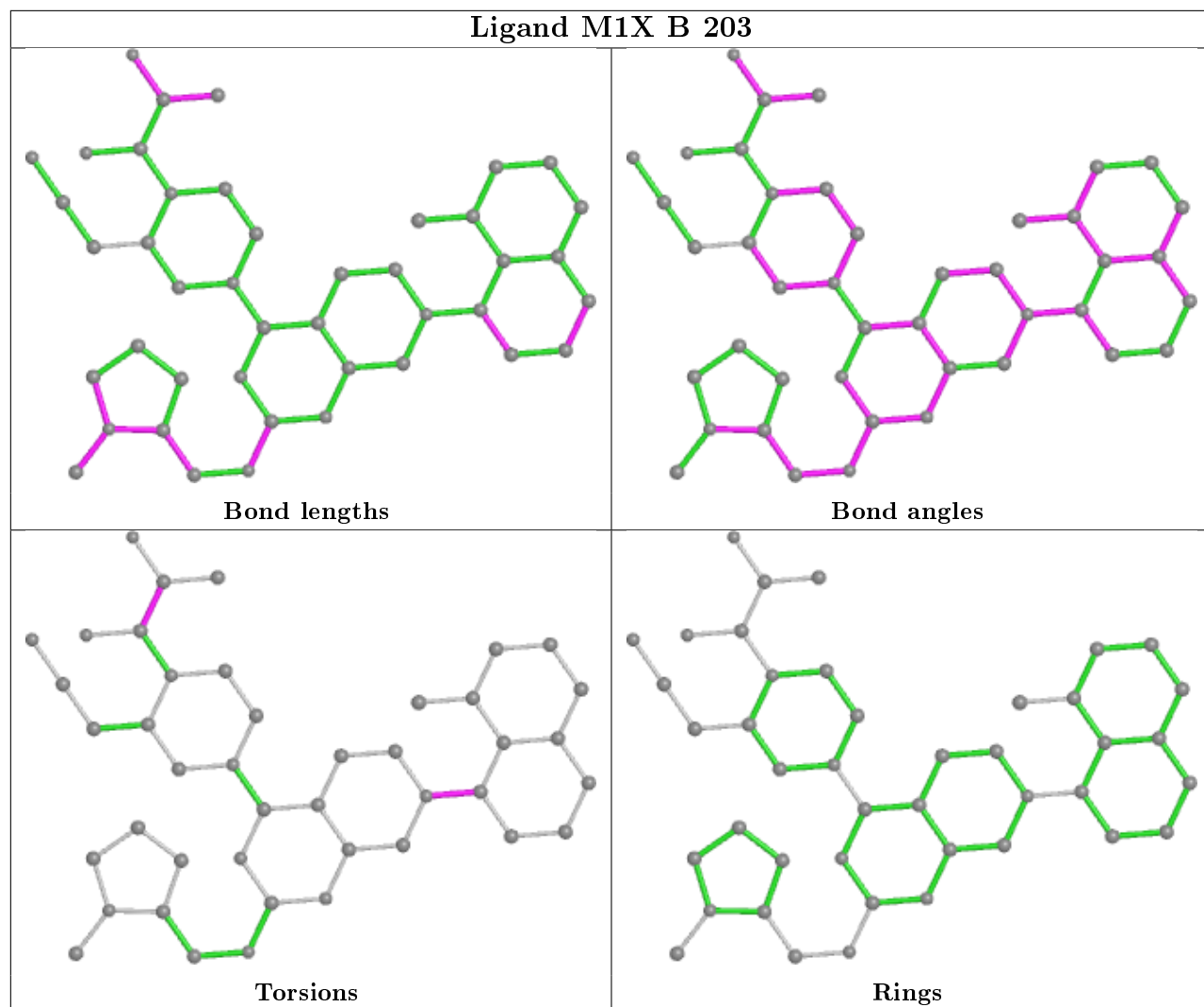
4 monomers are involved in 9 short contacts:

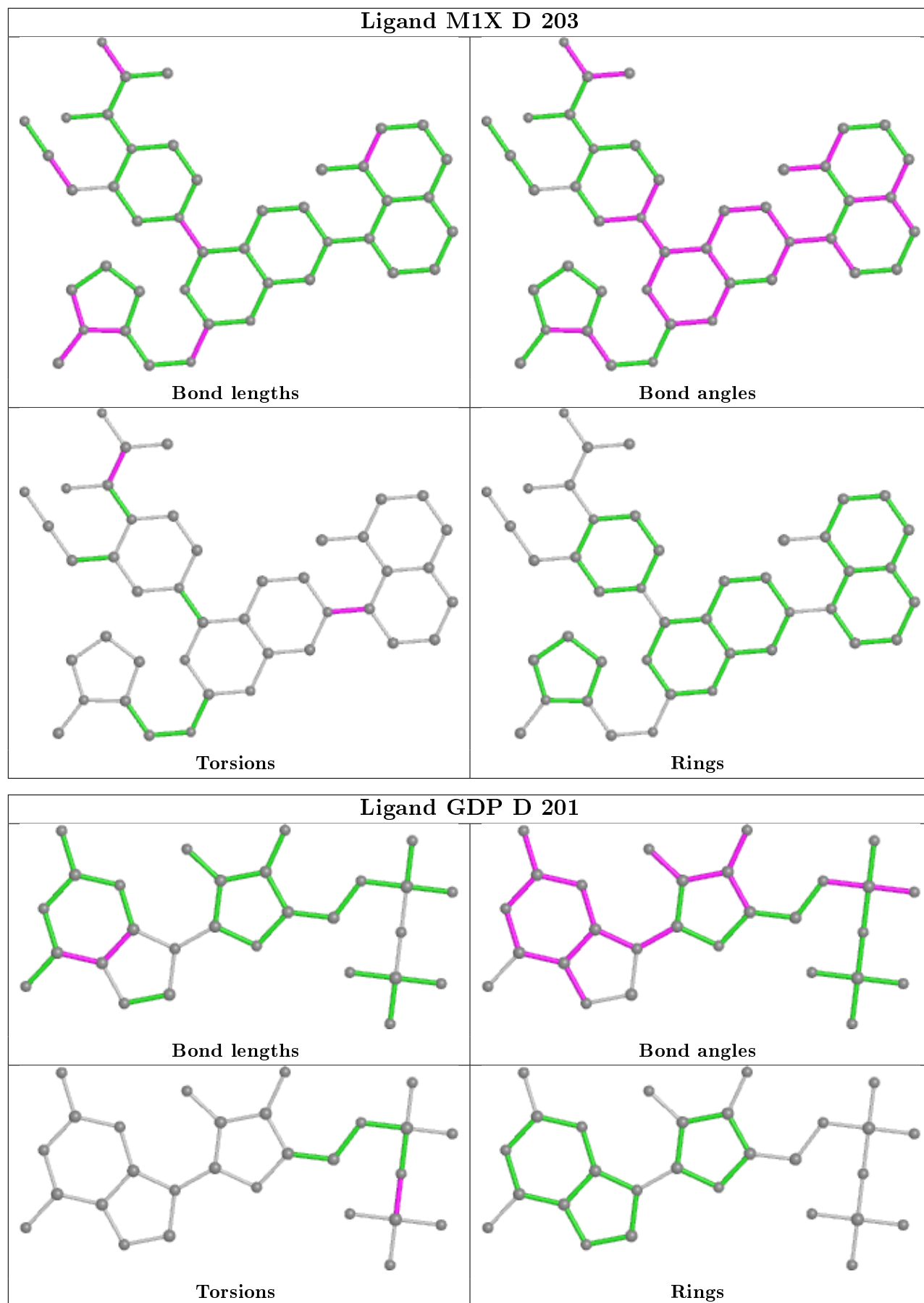
Mol	Chain	Res	Type	Clashes	Symm-Clashes
4	B	203	M1X	2	0
4	D	203	M1X	1	0
4	A	203	M1X	2	0
4	C	203	M1X	4	0

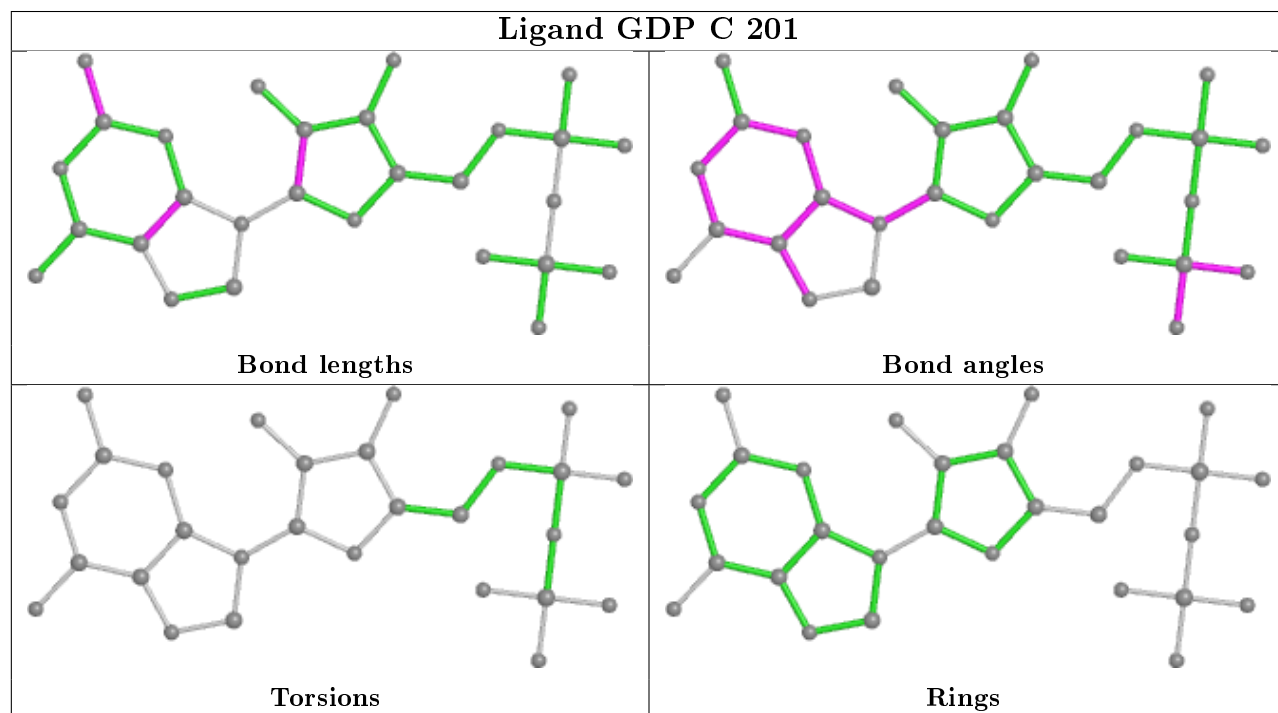
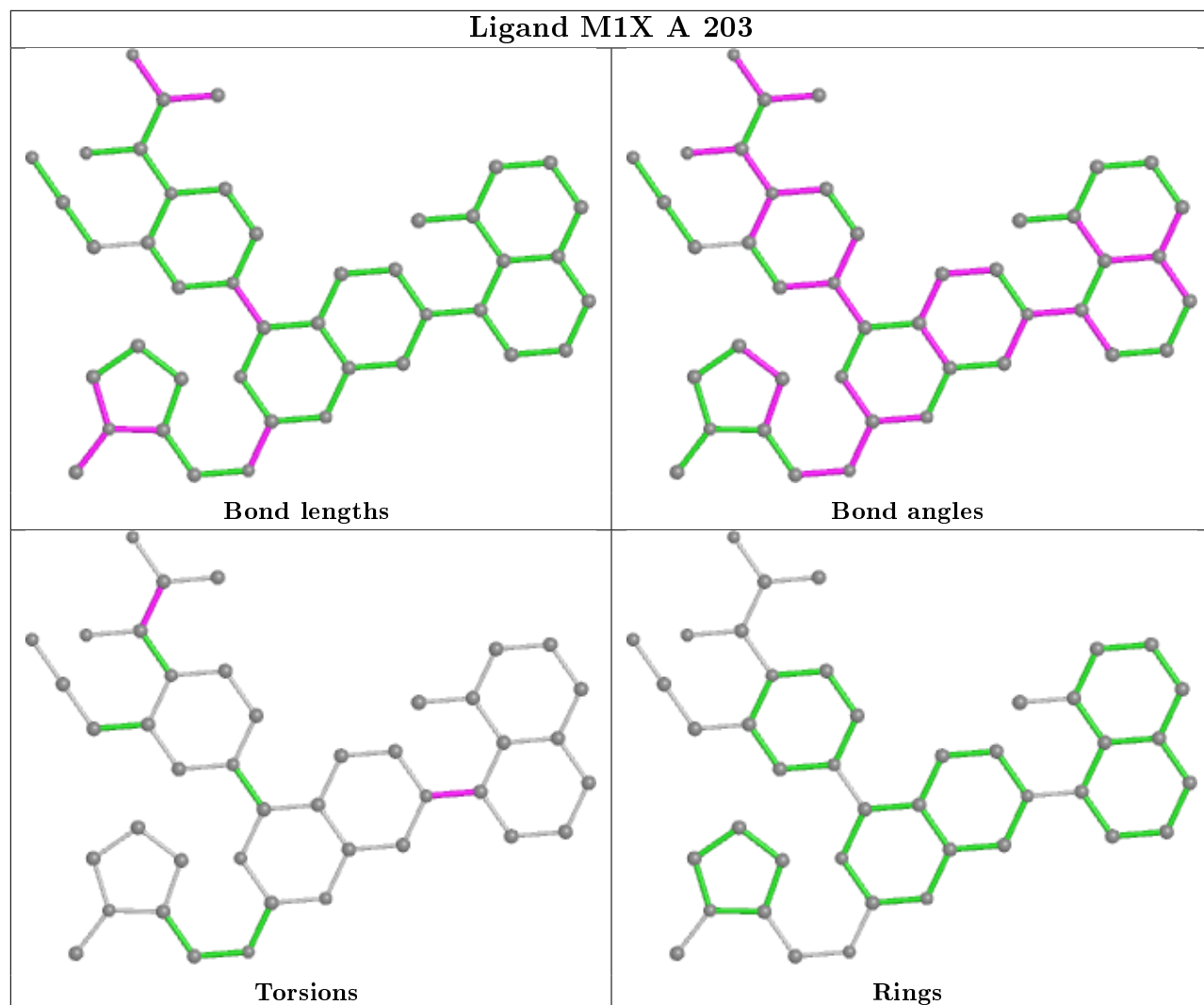
The following is a two-dimensional graphical depiction of Mogul quality analysis of bond lengths, bond angles, torsion angles, and ring geometry for all instances of the Ligand of Interest. In addition, ligands with molecular weight > 250 and outliers as shown on the validation Tables will also be included. For torsion angles, if less than 5% of the Mogul distribution of torsion angles is within 10 degrees of the torsion angle in question, then that torsion angle is considered an outlier.

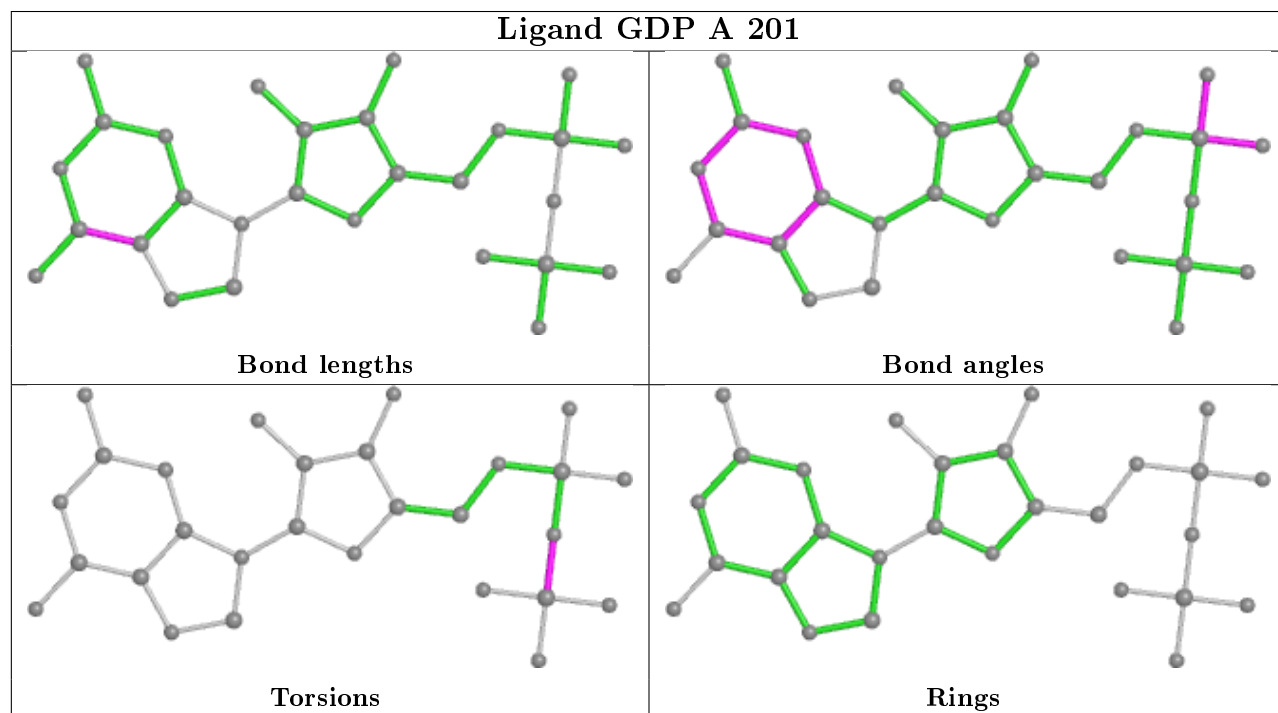
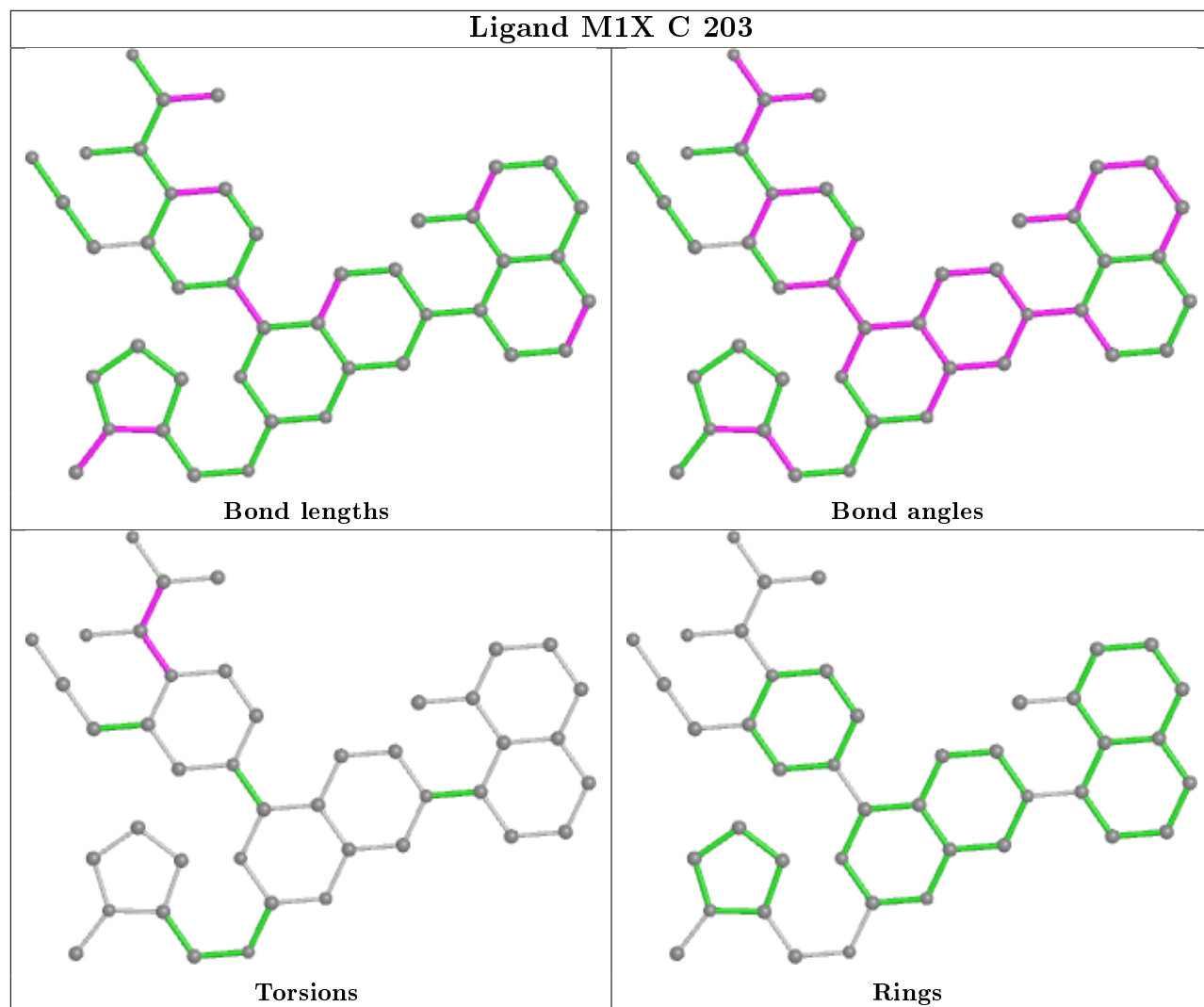
Any bond that is central to one or more torsion angles identified as an outlier by Mogul will be highlighted in the graph. For rings, the root-mean-square deviation (RMSD) between the ring in question and similar rings identified by Mogul is calculated over all ring torsion angles. If the average RMSD is greater than 60 degrees and the minimal RMSD between the ring in question and any Mogul-identified rings is also greater than 60 degrees, then that ring is considered an outlier. The outliers are highlighted in purple. The color gray indicates Mogul did not find sufficient equivalents in the CSD to analyse the geometry.











5.7 Other polymers

There are no such residues in this entry.

5.8 Polymer linkage issues

There are no chain breaks in this entry.

6 Fit of model and data ⓘ

6.1 Protein, DNA and RNA chains ⓘ

In the following table, the column labelled ‘#RSRZ> 2’ contains the number (and percentage) of RSRZ outliers, followed by percent RSRZ outliers for the chain as percentile scores relative to all X-ray entries and entries of similar resolution. The OWAB column contains the minimum, median, 95th percentile and maximum values of the occupancy-weighted average B-factor per residue. The column labelled ‘Q< 0.9’ lists the number of (and percentage) of residues with an average occupancy less than 0.9.

Mol	Chain	Analysed	<RSRZ>	#RSRZ>2			OWAB(Å ²)	Q<0.9
1	A	169/170 (99%)	0.11	5 (2%)	50	57	13, 20, 39, 46	0
1	B	168/170 (98%)	0.04	3 (1%)	68	74	12, 18, 32, 46	0
1	C	170/170 (100%)	-0.07	3 (1%)	68	74	11, 16, 32, 46	0
1	D	170/170 (100%)	0.17	5 (2%)	51	59	12, 22, 41, 56	0
All	All	677/680 (99%)	0.06	16 (2%)	59	66	11, 19, 38, 56	0

All (16) RSRZ outliers are listed below:

Mol	Chain	Res	Type	RSRZ
1	B	60	GLY	4.4
1	D	121	PRO	3.4
1	C	169	LYS	3.0
1	D	122	SER	2.9
1	D	30	ASP	2.7
1	B	166	HIS	2.7
1	A	50	THR	2.6
1	A	45	VAL	2.5
1	D	118	SER	2.4
1	B	108	ASP	2.4
1	D	31	GLU	2.3
1	C	121	PRO	2.2
1	A	121	PRO	2.2
1	C	108	ASP	2.1
1	A	52	LEU	2.1
1	A	48	GLY	2.0

6.2 Non-standard residues in protein, DNA, RNA chains ⓘ

There are no non-standard protein/DNA/RNA residues in this entry.

6.3 Carbohydrates ⓘ

There are no monosaccharides in this entry.

6.4 Ligands ⓘ

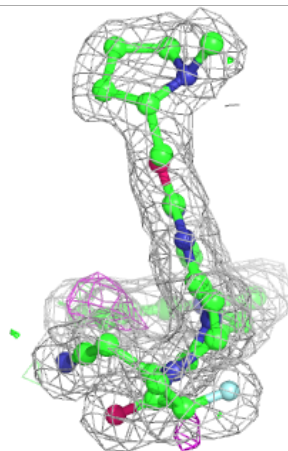
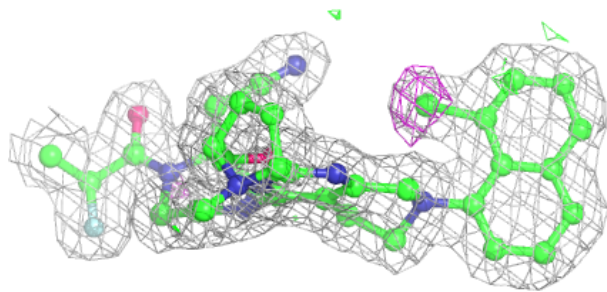
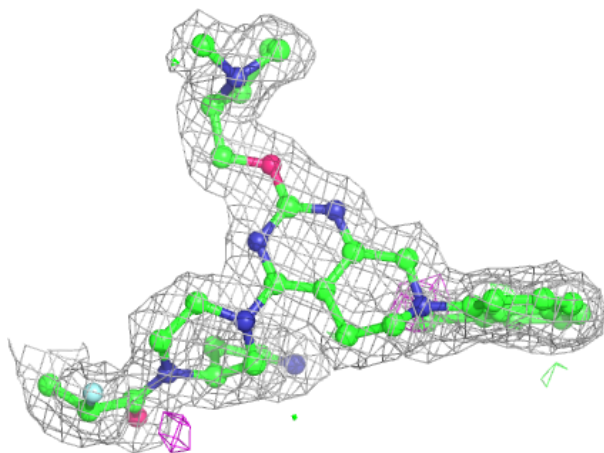
In the following table, the Atoms column lists the number of modelled atoms in the group and the number defined in the chemical component dictionary. The B-factors column lists the minimum, median, 95th percentile and maximum values of B factors of atoms in the group. The column labelled 'Q< 0.9' lists the number of atoms with occupancy less than 0.9.

Mol	Type	Chain	Res	Atoms	RSCC	RSR	B-factors(Å ²)	Q<0.9
4	M1X	C	203	43/43	0.93	0.10	11,16,19,31	0
4	M1X	A	203	43/43	0.94	0.10	15,20,26,36	0
4	M1X	D	203	43/43	0.94	0.10	15,19,23,30	0
4	M1X	B	203	43/43	0.95	0.11	13,16,19,25	0
2	GDP	D	201	28/28	0.95	0.10	18,26,30,31	2
2	GDP	A	201	28/28	0.97	0.09	15,17,26,26	2
2	GDP	C	201	28/28	0.98	0.08	13,15,18,18	2
2	GDP	B	201	28/28	0.98	0.07	14,17,18,18	2
3	MG	C	202	1/1	0.98	0.08	14,14,14,14	0
3	MG	D	202	1/1	0.98	0.08	19,19,19,19	0
3	MG	B	202	1/1	0.99	0.08	17,17,17,17	0
3	MG	A	202	1/1	0.99	0.11	15,15,15,15	0

The following is a graphical depiction of the model fit to experimental electron density of all instances of the Ligand of Interest. In addition, ligands with molecular weight > 250 and outliers as shown on the geometry validation Tables will also be included. Each fit is shown from different orientation to approximate a three-dimensional view.

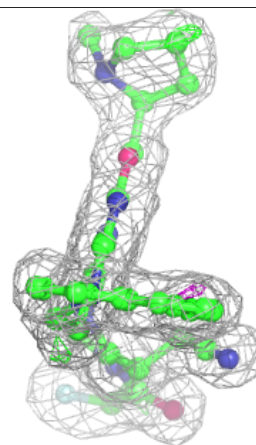
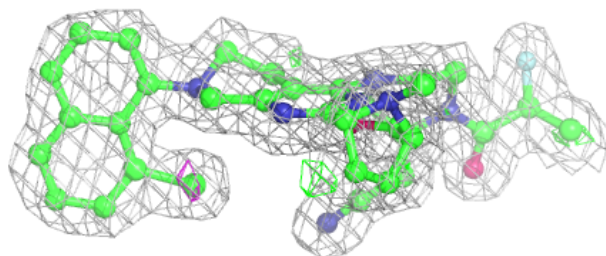
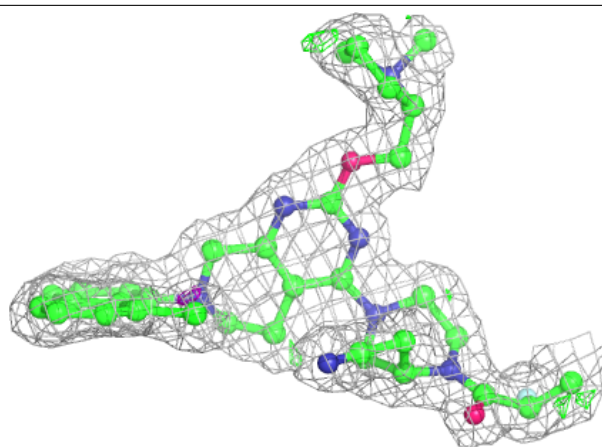
Electron density around M1X C 203:

$2mF_o-DF_c$ (at 0.7 rmsd) in gray
 mF_o-DF_c (at 3 rmsd) in purple (negative)
and green (positive)



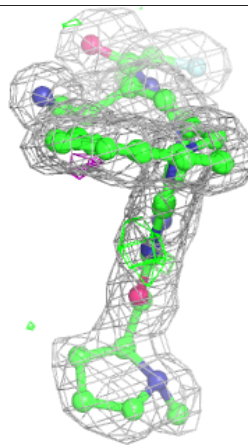
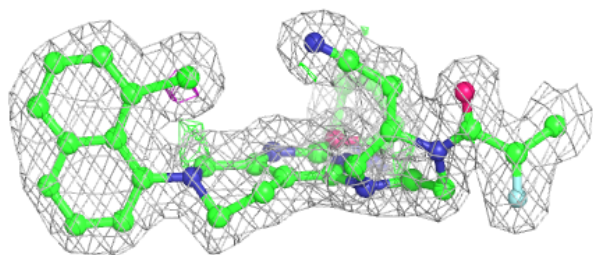
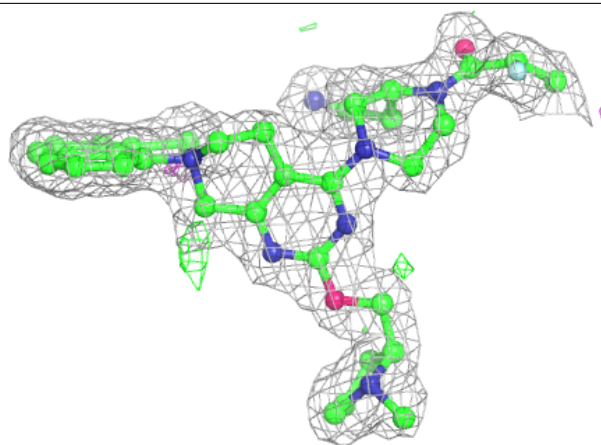
Electron density around M1X A 203:

$2mF_o-DF_c$ (at 0.7 rmsd) in gray
 mF_o-DF_c (at 3 rmsd) in purple (negative)
and green (positive)



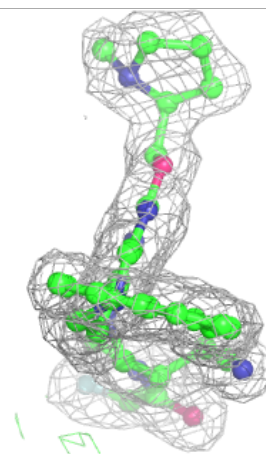
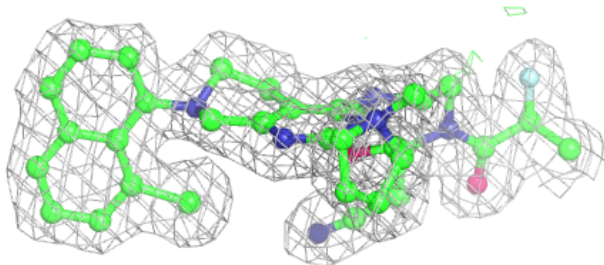
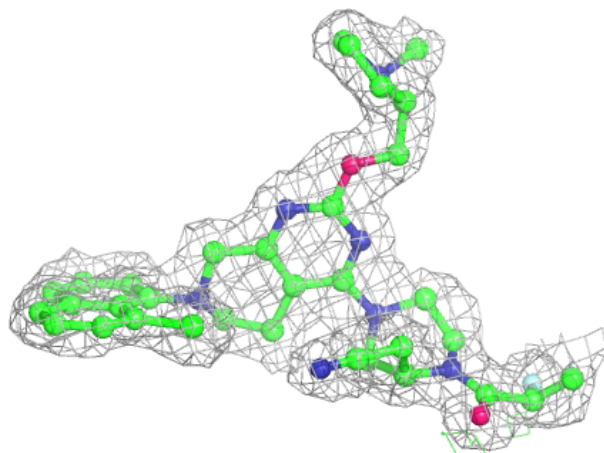
Electron density around M1X D 203:

$2mF_o-DF_c$ (at 0.7 rmsd) in gray
 mF_o-DF_c (at 3 rmsd) in purple (negative)
and green (positive)



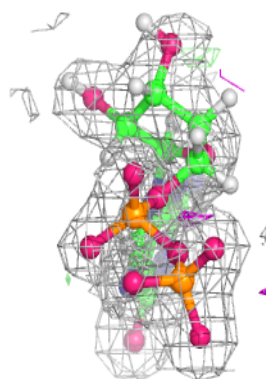
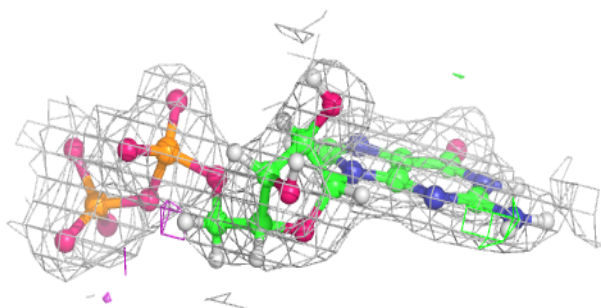
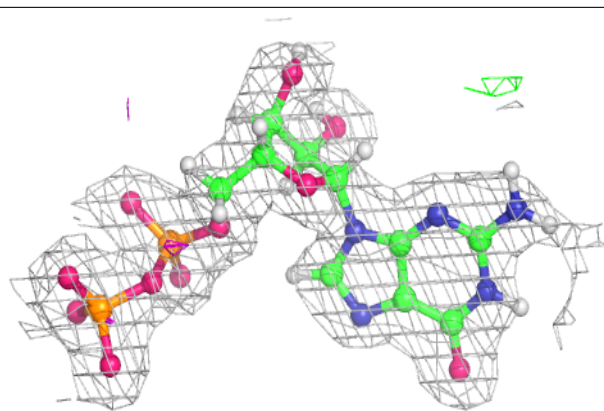
Electron density around M1X B 203:

$2mF_o-DF_c$ (at 0.7 rmsd) in gray
 mF_o-DF_c (at 3 rmsd) in purple (negative)
and green (positive)

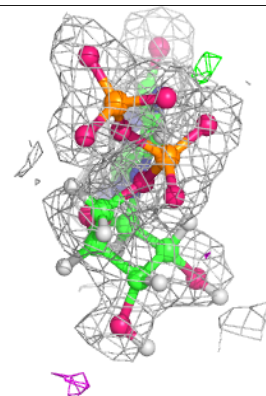
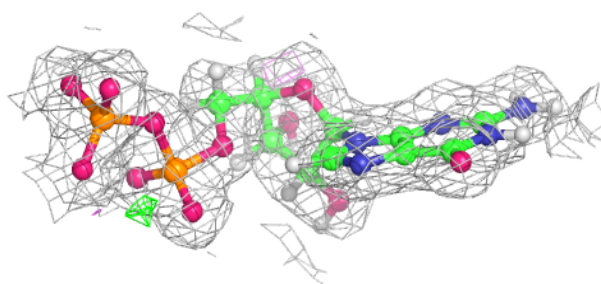
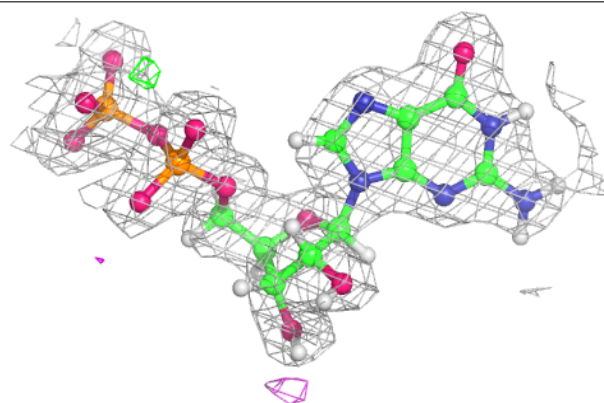


Electron density around GDP D 201:

$2mF_o-DF_c$ (at 0.7 rmsd) in gray
 mF_o-DF_c (at 3 rmsd) in purple (negative)
and green (positive)

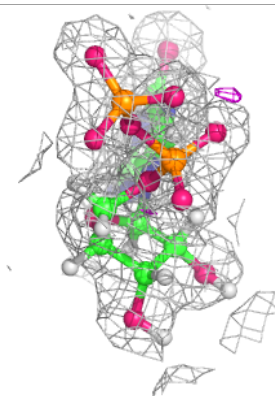
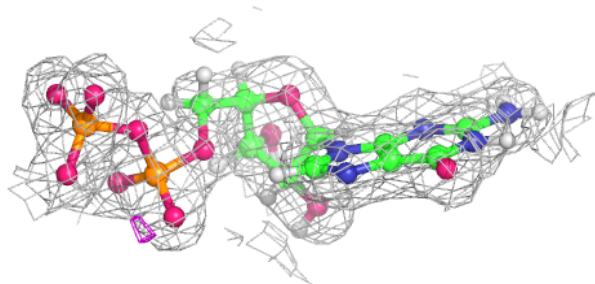
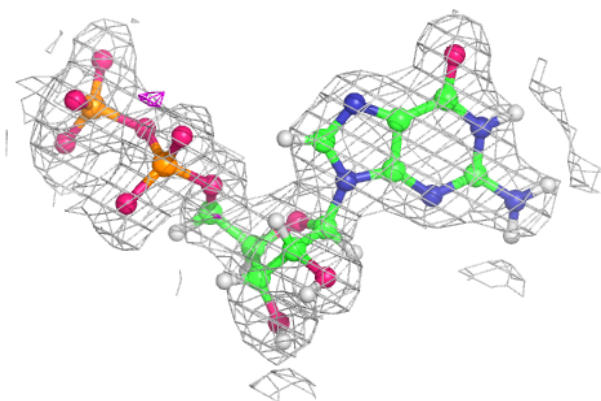
**Electron density around GDP A 201:**

$2mF_o-DF_c$ (at 0.7 rmsd) in gray
 mF_o-DF_c (at 3 rmsd) in purple (negative)
and green (positive)

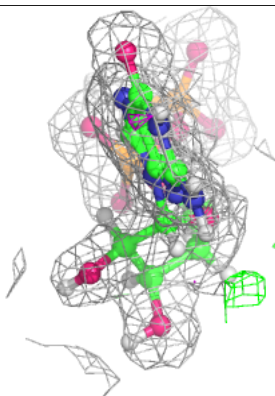
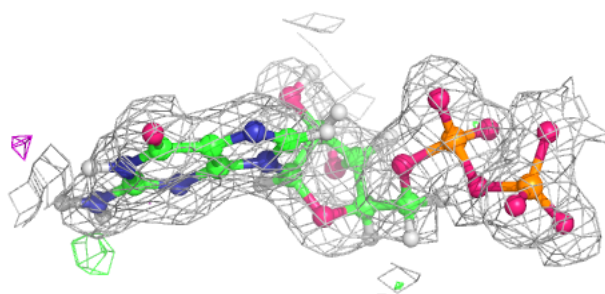
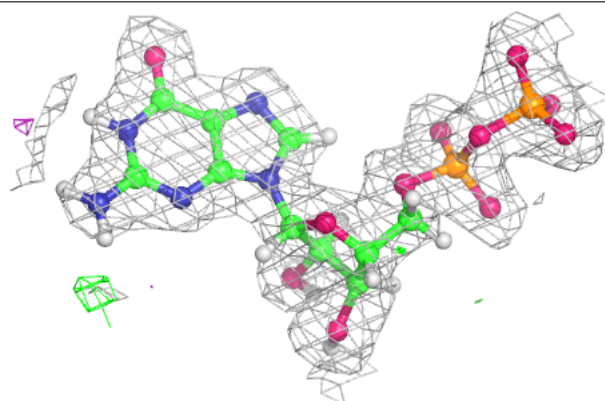


Electron density around GDP C 201:

$2mF_o-DF_c$ (at 0.7 rmsd) in gray
 mF_o-DF_c (at 3 rmsd) in purple (negative)
and green (positive)

**Electron density around GDP B 201:**

$2mF_o-DF_c$ (at 0.7 rmsd) in gray
 mF_o-DF_c (at 3 rmsd) in purple (negative)
and green (positive)



6.5 Other polymers

There are no such residues in this entry.