



Full wwPDB X-ray Structure Validation Report ⓘ

May 13, 2020 – 07:48 am BST

PDB ID : 3UUW
Title : 1.63 Angstrom Resolution Crystal Structure of Dehydrogenase (MviM) from *Clostridium difficile*.
Authors : Minasov, G.; Wawrzak, Z.; Kudritska, M.; Grimshaw, S.; Papazisi, L.; Savchenko, A.; Anderson, W.F.; Center for Structural Genomics of Infectious Diseases (CSGID)
Deposited on : 2011-11-28
Resolution : 1.63 Å(reported)

This is a Full wwPDB X-ray Structure Validation Report for a publicly released PDB entry.

We welcome your comments at validation@mail.wwpdb.org

A user guide is available at

<https://www.wwpdb.org/validation/2017/XrayValidationReportHelp>

with specific help available everywhere you see the ⓘ symbol.

The following versions of software and data (see [references ⓘ](#)) were used in the production of this report:

MolProbity : 4.02b-467
Mogul : 1.8.5 (274361), CSD as541be (2020)
Xtriage (Phenix) : 1.13
EDS : 2.11
Percentile statistics : 20191225.v01 (using entries in the PDB archive December 25th 2019)
Refmac : 5.8.0158
CCP4 : 7.0.044 (Gargrove)
Ideal geometry (proteins) : Engh & Huber (2001)
Ideal geometry (DNA, RNA) : Parkinson et al. (1996)
Validation Pipeline (wwPDB-VP) : 2.11

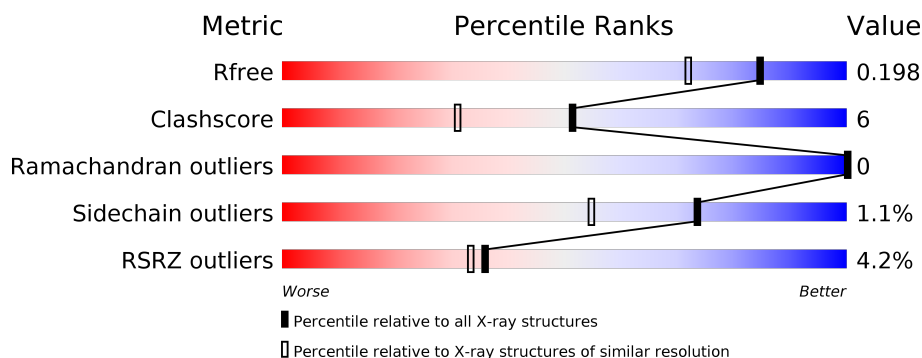
1 Overall quality at a glance

The following experimental techniques were used to determine the structure:

X-RAY DIFFRACTION

The reported resolution of this entry is 1.63 Å.

Percentile scores (ranging between 0-100) for global validation metrics of the entry are shown in the following graphic. The table shows the number of entries on which the scores are based.



Metric	Whole archive (#Entries)	Similar resolution (#Entries, resolution range(Å))
R_{free}	130704	3122 (1.66-1.62)
Clashscore	141614	3268 (1.66-1.62)
Ramachandran outliers	138981	3215 (1.66-1.62)
Sidechain outliers	138945	3215 (1.66-1.62)
RSRZ outliers	127900	3079 (1.66-1.62)

The table below summarises the geometric issues observed across the polymeric chains and their fit to the electron density. The red, orange, yellow and green segments on the lower bar indicate the fraction of residues that contain outliers for ≥ 3 , 2, 1 and 0 types of geometric quality criteria respectively. A grey segment represents the fraction of residues that are not modelled. The numeric value for each fraction is indicated below the corresponding segment, with a dot representing fractions $\leq 5\%$. The upper red bar (where present) indicates the fraction of residues that have poor fit to the electron density. The numeric value is given above the bar.

Mol	Chain	Length	Quality of chain
1	A	308	<div> <div>4%</div> <div>91%</div> <div>7%</div> <div>•</div> </div>
1	B	308	<div> <div>4%</div> <div>91%</div> <div>7%</div> <div>•</div> </div>
1	C	308	<div> <div>3%</div> <div>91%</div> <div>7%</div> <div>•</div> </div>
1	D	308	<div> <div>6%</div> <div>88%</div> <div>9%</div> <div>••</div> </div>

The following table lists non-polymeric compounds, carbohydrate monomers and non-standard residues in protein, DNA, RNA chains that are outliers for geometric or electron-density-fit crite-

ria:

Mol	Type	Chain	Res	Chirality	Geometry	Clashes	Electron density
4	PEG	A	311	-	-	X	-
4	PEG	C	311	-	-	X	-
5	1PE	A	312	-	-	X	-

2 Entry composition

There are 7 unique types of molecules in this entry. The entry contains 11499 atoms, of which 0 are hydrogens and 0 are deuteriums.

In the tables below, the ZeroOcc column contains the number of atoms modelled with zero occupancy, the AltConf column contains the number of residues with at least one atom in alternate conformation and the Trace column contains the number of residues modelled with at most 2 atoms.

- Molecule 1 is a protein called Putative oxidoreductase with NAD(P)-binding Rossmann-fold domain.

Mol	Chain	Residues	Atoms					ZeroOcc	AltConf	Trace
1	A	304	Total	C	N	O	S	0	13	0
			2525	1607	432	472	14			
1	B	303	Total	C	N	O	S	0	17	0
			2542	1618	434	477	13			
1	C	303	Total	C	N	O	S	0	18	0
			2553	1626	438	476	13			
1	D	303	Total	C	N	O	S	0	19	0
			2559	1621	439	485	14			

There are 12 discrepancies between the modelled and reference sequences:

Chain	Residue	Modelled	Actual	Comment	Reference
A	-2	SER	-	EXPRESSION TAG	UNP Q180U8
A	-1	ASN	-	EXPRESSION TAG	UNP Q180U8
A	0	ALA	-	EXPRESSION TAG	UNP Q180U8
B	-2	SER	-	EXPRESSION TAG	UNP Q180U8
B	-1	ASN	-	EXPRESSION TAG	UNP Q180U8
B	0	ALA	-	EXPRESSION TAG	UNP Q180U8
C	-2	SER	-	EXPRESSION TAG	UNP Q180U8
C	-1	ASN	-	EXPRESSION TAG	UNP Q180U8
C	0	ALA	-	EXPRESSION TAG	UNP Q180U8
D	-2	SER	-	EXPRESSION TAG	UNP Q180U8
D	-1	ASN	-	EXPRESSION TAG	UNP Q180U8
D	0	ALA	-	EXPRESSION TAG	UNP Q180U8

- Molecule 2 is CHLORIDE ION (three-letter code: CL) (formula: Cl).

Mol	Chain	Residues	Atoms		ZeroOcc	AltConf
2	B	3	Total	Cl	0	0
			3	3		
2	A	4	Total	Cl	0	0
			4	4		

Continued on next page...

Continued from previous page...

Mol	Chain	Residues	Atoms		ZeroOcc	AltConf
2	D	3	Total	Cl	0	0
			3	3		
2	C	3	Total	Cl	0	0
			3	3		

- Molecule 3 is GLYCEROL (three-letter code: GOL) (formula: $C_3H_8O_3$).



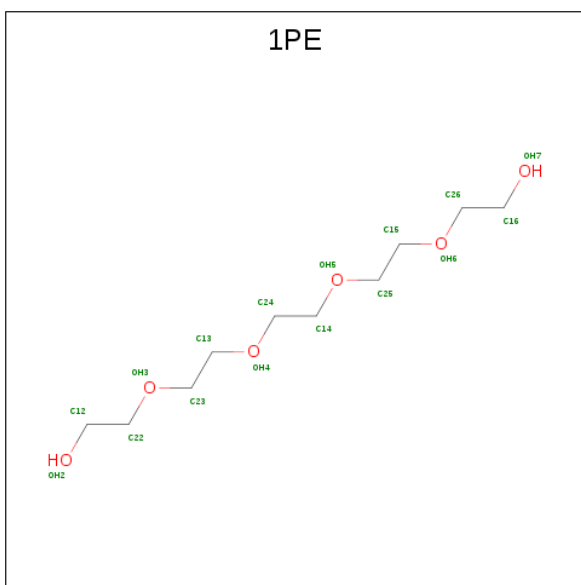
Mol	Chain	Residues	Atoms			ZeroOcc	AltConf
3	A	1	Total	C	O	0	0
			6	3	3		
3	B	1	Total	C	O	0	0
			6	3	3		
3	C	1	Total	C	O	0	0
			6	3	3		
3	D	1	Total	C	O	0	0
			6	3	3		

- Molecule 4 is DI(HYDROXYETHYL)ETHER (three-letter code: PEG) (formula: $C_4H_{10}O_3$).



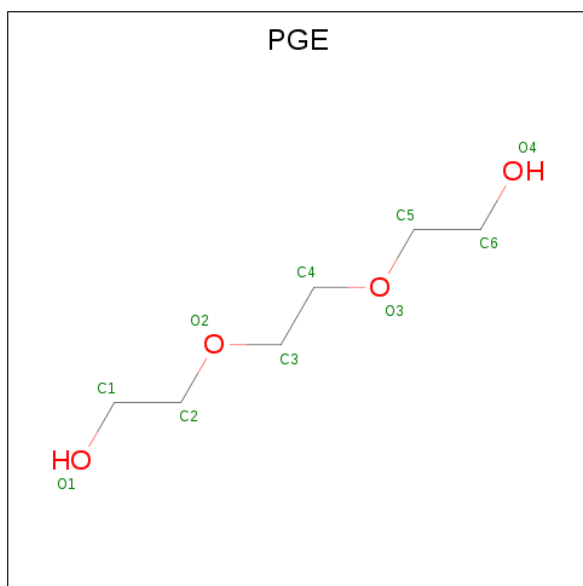
Mol	Chain	Residues	Atoms			ZeroOcc	AltConf
4	A	1	Total	C	O	0	0
			7	4	3		
4	B	1	Total	C	O	0	0
			7	4	3		
4	C	1	Total	C	O	0	0
			7	4	3		
4	D	1	Total	C	O	0	0
			7	4	3		

- Molecule 5 is PENTAETHYLENE GLYCOL (three-letter code: 1PE) (formula: $C_{10}H_{22}O_6$).



Mol	Chain	Residues	Atoms			ZeroOcc	AltConf
5	A	1	Total	C	O	0	0
			16	10	6		

- Molecule 6 is TRIETHYLENE GLYCOL (three-letter code: PGE) (formula: $C_6H_{14}O_4$).



Mol	Chain	Residues	Atoms			ZeroOcc	AltConf
6	C	1	Total	C	O	0	0
			10	6	4		

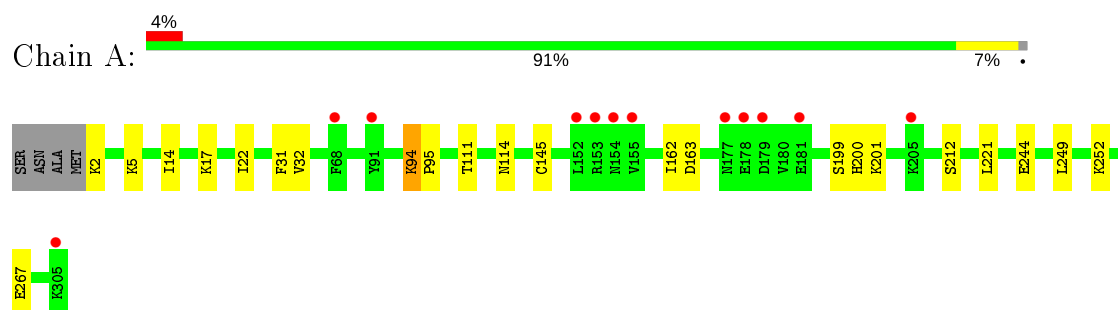
- Molecule 7 is water.

Mol	Chain	Residues	Atoms		ZeroOcc	AltConf
7	A	318	Total	O	0	13
			329	329		
7	B	302	Total	O	0	14
			312	312		
7	C	287	Total	O	0	11
			296	296		
7	D	284	Total	O	0	12
			292	292		

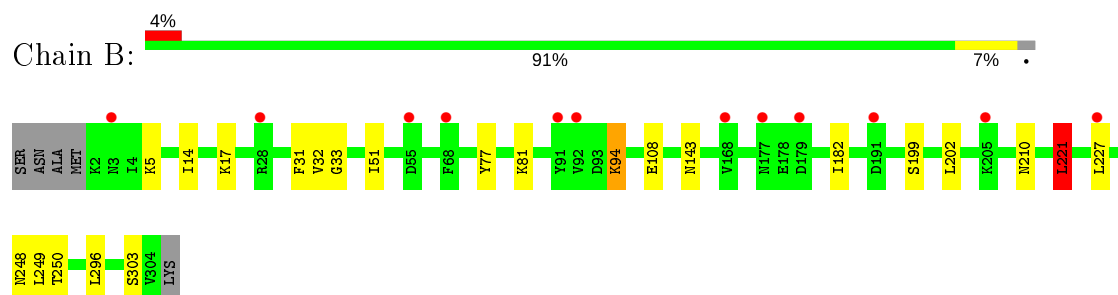
3 Residue-property plots [i](#)

These plots are drawn for all protein, RNA and DNA chains in the entry. The first graphic for a chain summarises the proportions of the various outlier classes displayed in the second graphic. The second graphic shows the sequence view annotated by issues in geometry and electron density. Residues are color-coded according to the number of geometric quality criteria for which they contain at least one outlier: green = 0, yellow = 1, orange = 2 and red = 3 or more. A red dot above a residue indicates a poor fit to the electron density ($\text{RSRZ} > 2$). Stretches of 2 or more consecutive residues without any outlier are shown as a green connector. Residues present in the sample, but not in the model, are shown in grey.

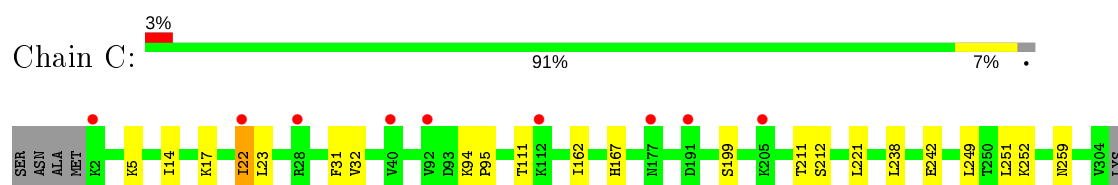
- Molecule 1: Putative oxidoreductase with NAD(P)-binding Rossmann-fold domain



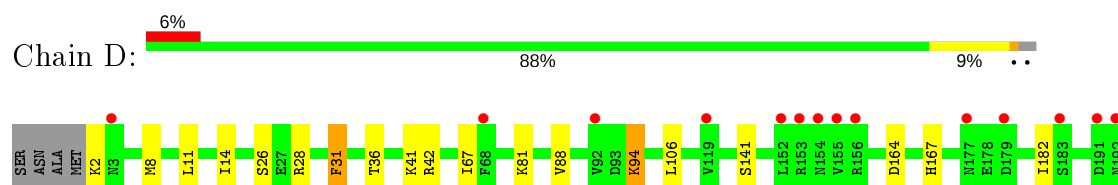
- Molecule 1: Putative oxidoreductase with NAD(P)-binding Rossmann-fold domain

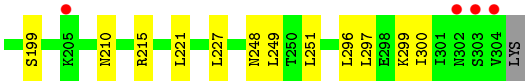


- Molecule 1: Putative oxidoreductase with NAD(P)-binding Rossmann-fold domain



- Molecule 1: Putative oxidoreductase with NAD(P)-binding Rossmann-fold domain





4 Data and refinement statistics

Property	Value	Source
Space group	P 1	Depositor
Cell constants a, b, c, α , β , γ	69.52Å 69.53Å 83.10Å 98.10° 106.97° 115.73°	Depositor
Resolution (Å)	29.97 – 1.63 29.45 – 1.63	Depositor EDS
% Data completeness (in resolution range)	97.1 (29.97-1.63) 97.1 (29.45-1.63)	Depositor EDS
R_{merge}	0.07	Depositor
R_{sym}	(Not available)	Depositor
$\langle I/\sigma(I) \rangle$ ¹	2.87 (at 1.63Å)	Xtriage
Refinement program	REFMAC 5.5.0102	Depositor
R, R_{free}	0.158 , 0.195 0.166 , 0.198	Depositor DCC
R_{free} test set	7763 reflections (5.03%)	wwPDB-VP
Wilson B-factor (Å ²)	20.1	Xtriage
Anisotropy	0.363	Xtriage
Bulk solvent k_{sol} (e/Å ³), B_{sol} (Å ²)	0.40 , 57.1	EDS
L-test for twinning ²	$\langle L \rangle = 0.50$, $\langle L^2 \rangle = 0.33$	Xtriage
Estimated twinning fraction	0.069 for k,h,-h-k-l	Xtriage
F_o, F_c correlation	0.97	EDS
Total number of atoms	11499	wwPDB-VP
Average B, all atoms (Å ²)	25.0	wwPDB-VP

Xtriage's analysis on translational NCS is as follows: *The largest off-origin peak in the Patterson function is 5.37% of the height of the origin peak. No significant pseudotranslation is detected.*

¹Intensities estimated from amplitudes.

²Theoretical values of $\langle |L| \rangle$, $\langle L^2 \rangle$ for acentric reflections are 0.5, 0.333 respectively for untwinned datasets, and 0.375, 0.2 for perfectly twinned datasets.

5 Model quality [i](#)

5.1 Standard geometry [i](#)

Bond lengths and bond angles in the following residue types are not validated in this section: PEG, GOL, PGE, 1PE, CL

The Z score for a bond length (or angle) is the number of standard deviations the observed value is removed from the expected value. A bond length (or angle) with $|Z| > 5$ is considered an outlier worth inspection. RMSZ is the root-mean-square of all Z scores of the bond lengths (or angles).

Mol	Chain	Bond lengths		Bond angles	
		RMSZ	# Z >5	RMSZ	# Z >5
1	A	0.55	0/2561	0.64	0/3440
1	B	0.55	0/2581	0.65	1/3469 (0.0%)
1	C	0.54	0/2589	0.64	0/3480
1	D	0.54	0/2595	0.66	0/3489
All	All	0.55	0/10326	0.65	1/13878 (0.0%)

There are no bond length outliers.

All (1) bond angle outliers are listed below:

Mol	Chain	Res	Type	Atoms	Z	Observed(°)	Ideal(°)
1	B	221	LEU	CA-CB-CG	5.67	128.34	115.30

There are no chirality outliers.

There are no planarity outliers.

5.2 Too-close contacts [i](#)

In the following table, the Non-H and H(model) columns list the number of non-hydrogen atoms and hydrogen atoms in the chain respectively. The H(added) column lists the number of hydrogen atoms added and optimized by MolProbity. The Clashes column lists the number of clashes within the asymmetric unit, whereas Symm-Clashes lists symmetry related clashes.

Mol	Chain	Non-H	H(model)	H(added)	Clashes	Symm-Clashes
1	A	2525	0	2606	28	0
1	B	2542	0	2619	29	0
1	C	2553	0	2634	26	0
1	D	2559	0	2608	31	0
2	A	4	0	0	1	0
2	B	3	0	0	0	0

Continued on next page...

Continued from previous page...

Mol	Chain	Non-H	H(model)	H(added)	Clashes	Symm-Clashes
2	C	3	0	0	0	0
2	D	3	0	0	0	0
3	A	6	0	8	0	0
3	B	6	0	8	0	0
3	C	6	0	8	0	0
3	D	6	0	8	0	0
4	A	7	0	10	9	0
4	B	7	0	10	0	0
4	C	7	0	10	8	0
4	D	7	0	10	2	0
5	A	16	0	22	16	0
6	C	10	0	14	2	0
7	A	329	0	0	7	0
7	B	312	0	0	4	0
7	C	296	0	0	3	0
7	D	292	0	0	3	0
All	All	11499	0	10575	118	0

The all-atom clashscore is defined as the number of clashes found per 1000 atoms (including hydrogen atoms). The all-atom clashscore for this structure is 6.

All (118) close contacts within the same asymmetric unit are listed below, sorted by their clash magnitude.

Atom-1	Atom-2	Interatomic distance (Å)	Clash overlap (Å)
1:B:249[B]:LEU:HD23	1:C:251[B]:LEU:HD12	1.34	1.07
1:C:5[A]:LYS:HE2	1:C:32:VAL:HG21	1.49	0.91
1:B:182[B]:ILE:HD11	1:B:296:LEU:HG	1.59	0.85
1:D:182[A]:ILE:HD11	1:D:296:LEU:CD1	2.08	0.83
1:D:182[A]:ILE:HD11	1:D:296:LEU:HG	1.61	0.83
5:A:312:1PE:H232	7:B:338:HOH:O	1.78	0.82
4:A:311:PEG:C1	1:B:227[B]:LEU:HD11	2.15	0.77
1:A:221[B]:LEU:HD23	1:A:221[B]:LEU:O	1.85	0.76
1:A:221[B]:LEU:HD23	1:A:221[B]:LEU:C	2.06	0.75
1:B:249[B]:LEU:CD2	1:C:251[B]:LEU:HD12	2.16	0.74
1:B:5:LYS:HE2	1:B:32:VAL:HG21	1.70	0.73
1:D:182[A]:ILE:HD11	1:D:296:LEU:CG	2.17	0.73
1:B:182[B]:ILE:CD1	1:B:296:LEU:HG	2.17	0.73
1:A:201:LYS:HZ1	5:A:312:1PE:H121	1.54	0.73
1:C:249[A]:LEU:C	1:C:249[A]:LEU:HD23	2.14	0.68
4:A:311:PEG:H11	1:B:227[B]:LEU:HD11	1.75	0.68
1:C:167:HIS:CE1	6:C:310:PGE:H4	2.29	0.67

Continued on next page...

Continued from previous page...

Atom-1	Atom-2	Interatomic distance (Å)	Clash overlap (Å)
1:A:201:LYS:NZ	5:A:312:1PE:H121	2.09	0.67
1:D:67:ILE:HG12	1:D:88[A]:VAL:HG11	1.80	0.64
1:C:5[A]:LYS:HE2	1:C:32:VAL:CG2	2.24	0.64
4:A:311:PEG:H12	1:B:227[B]:LEU:HD11	1.81	0.62
1:C:212:SER:HB3	4:C:311:PEG:H11	1.81	0.62
1:D:8[B]:MET:HE3	1:D:31:PHE:HZ	1.65	0.62
1:D:199:SER:HB2	4:D:310:PEG:H11	1.83	0.60
1:D:249[A]:LEU:HD23	1:D:249[A]:LEU:C	2.22	0.60
1:A:162[B]:ILE:HD12	1:A:162[B]:ILE:C	2.22	0.60
1:C:22[A]:ILE:C	1:C:22[A]:ILE:HD12	2.22	0.59
1:A:5:LYS:HE2	1:A:32:VAL:HG21	1.85	0.59
1:B:5:LYS:HE2	1:B:32:VAL:CG2	2.33	0.59
1:B:182[B]:ILE:HG23	1:B:202:LEU:CD2	2.34	0.58
1:C:199:SER:HB2	4:C:311:PEG:H32	1.87	0.57
1:D:296:LEU:HD12	1:D:299:LYS:NZ	2.19	0.57
1:D:249[B]:LEU:HG	1:D:251[B]:LEU:HD11	1.87	0.57
1:A:201:LYS:HZ1	5:A:312:1PE:C12	2.17	0.56
1:C:95:PRO:HG3	1:C:162[A]:ILE:CG2	2.35	0.56
1:C:242:GLU:HG2	1:C:251[B]:LEU:CD2	2.36	0.55
1:B:303:SER:HB3	7:B:330:HOH:O	2.06	0.54
1:B:249[A]:LEU:HD23	1:B:249[A]:LEU:C	2.27	0.54
1:D:2:LYS:NZ	7:D:930:HOH:O	2.40	0.54
1:A:200:HIS:O	5:A:312:1PE:H261	2.08	0.54
5:A:312:1PE:C25	7:A:348:HOH:O	2.56	0.54
1:A:95:PRO:HG3	1:A:162[B]:ILE:HD13	1.90	0.54
1:B:14:ILE:HD13	1:B:17:LYS:HE2	1.88	0.54
1:A:221[B]:LEU:CD2	1:A:221[B]:LEU:C	2.76	0.53
5:A:312:1PE:H221	1:B:199:SER:HB2	1.91	0.52
1:A:5:LYS:HE2	1:A:32:VAL:CG2	2.40	0.52
4:A:311:PEG:H22	1:B:143:ASN:HD21	1.74	0.52
1:D:182[A]:ILE:HD11	1:D:296:LEU:HD11	1.90	0.52
1:D:94:LYS:HE2	1:D:167:HIS:NE2	2.25	0.51
1:D:249[B]:LEU:HG	1:D:251[B]:LEU:CD1	2.41	0.51
1:B:182[B]:ILE:HG23	1:B:202:LEU:HD23	1.93	0.51
5:A:312:1PE:H231	7:A:718:HOH:O	2.09	0.51
4:A:311:PEG:H11	1:B:227[B]:LEU:CD1	2.41	0.50
1:D:164:ASP:OD2	1:D:215:ARG:NH1	2.40	0.50
1:D:221:LEU:C	1:D:221:LEU:HD12	2.32	0.49
1:D:251[B]:LEU:HD12	1:D:251[B]:LEU:N	2.27	0.49
4:A:311:PEG:C1	1:B:227[B]:LEU:CD1	2.89	0.49
1:B:33:GLY:HA2	1:B:51[B]:ILE:HG22	1.96	0.48

Continued on next page...

Continued from previous page...

Atom-1	Atom-2	Interatomic distance (Å)	Clash overlap (Å)
1:B:77:TYR:CZ	1:B:81[B]:LYS:HD2	2.47	0.48
1:B:221:LEU:C	1:B:221:LEU:HD23	2.35	0.48
1:C:212:SER:CB	4:C:311:PEG:H11	2.44	0.48
1:A:221[B]:LEU:CD2	1:A:221[B]:LEU:O	2.61	0.47
1:A:14:ILE:HD13	1:A:17:LYS:HE2	1.96	0.47
1:D:36:THR:HG22	1:D:42:ARG:HB2	1.96	0.47
1:A:2:LYS:NZ	7:A:1135:HOH:O	2.47	0.47
5:A:312:1PE:H252	7:A:348:HOH:O	2.13	0.46
1:A:94:LYS:HE3	1:A:94:LYS:O	2.16	0.46
1:C:242:GLU:HG2	1:C:251[B]:LEU:HD22	1.97	0.46
1:C:167:HIS:CE1	6:C:310:PGE:C4	2.99	0.45
1:C:211:THR:O	4:C:311:PEG:H32	2.15	0.45
5:A:312:1PE:H132	7:B:338:HOH:O	2.17	0.45
4:C:311:PEG:H41	7:D:385:HOH:O	2.16	0.45
1:A:145:CYS:SG	4:A:311:PEG:C4	3.05	0.44
4:C:311:PEG:H22	1:D:210:ASN:OD1	2.18	0.44
1:A:244:GLU:HG2	1:A:249:LEU:HD13	1.99	0.44
1:A:252[B]:LYS:HD3	1:D:248:ASN:OD1	2.17	0.44
4:C:311:PEG:H21	4:C:311:PEG:H42	1.87	0.44
1:B:249[A]:LEU:HD23	1:B:250:THR:N	2.33	0.44
1:A:111:THR:HG21	7:A:407:HOH:O	2.17	0.44
1:B:5:LYS:HB3	1:B:32:VAL:HG21	2.00	0.44
1:C:221[B]:LEU:HD21	7:C:1104:HOH:O	2.18	0.44
1:A:201:LYS:NZ	5:A:312:1PE:C12	2.77	0.43
1:B:108[B]:GLU:HG2	7:B:349:HOH:O	2.17	0.43
1:A:199[A]:SER:OG	5:A:312:1PE:H262	2.19	0.43
4:A:311:PEG:H12	1:B:227[B]:LEU:CD1	2.47	0.43
1:A:212[A]:SER:HB2	5:A:312:1PE:H252	2.00	0.43
1:C:14:ILE:HD13	1:C:17:LYS:HE2	1.99	0.43
1:A:145:CYS:SG	4:A:311:PEG:H41	2.58	0.43
1:D:297:LEU:HD23	1:D:300:ILE:HD12	2.00	0.43
1:D:8[B]:MET:HE2	1:D:8[B]:MET:HB2	1.80	0.43
5:A:312:1PE:H251	7:A:348:HOH:O	2.17	0.43
1:C:95:PRO:HG3	1:C:162[A]:ILE:HG22	1.99	0.43
1:B:94:LYS:O	1:B:94:LYS:HE3	2.19	0.43
1:D:11:LEU:O	1:D:41:LYS:HE2	2.18	0.43
1:A:162[B]:ILE:HD12	1:A:163:ASP:N	2.34	0.42
1:D:141:SER:HB3	1:D:227[B]:LEU:HD12	2.01	0.42
1:C:111:THR:OG1	7:C:893:HOH:O	2.21	0.42
1:D:182[A]:ILE:CD1	1:D:296:LEU:HD11	2.48	0.42
1:D:210:ASN:HB3	4:D:310:PEG:H12	2.01	0.42

Continued on next page...

Continued from previous page...

Atom-1	Atom-2	Interatomic distance (Å)	Clash overlap (Å)
1:D:8[B]:MET:CE	1:D:31:PHE:HZ	2.32	0.42
1:C:249[A]:LEU:CD2	1:C:249[A]:LEU:C	2.85	0.42
1:A:221[B]:LEU:HG	7:A:1128[B]:HOH:O	2.20	0.41
1:D:94:LYS:C	1:D:94:LYS:HD2	2.41	0.41
5:A:312:1PE:H222	1:B:210:ASN:HB3	2.02	0.41
1:B:248:ASN:OD1	1:C:252:LYS:HG2	2.21	0.41
1:D:81[B]:LYS:HG3	1:D:106:LEU:HD21	2.03	0.41
1:C:5[A]:LYS:HB3	1:C:32:VAL:HG21	2.01	0.41
1:D:28[A]:ARG:HG3	7:D:480:HOH:O	2.20	0.41
1:C:238:LEU:N	1:C:238:LEU:HD12	2.35	0.41
1:A:199[A]:SER:OG	5:A:312:1PE:OH6	2.38	0.41
1:C:252:LYS:HG3	7:C:455:HOH:O	2.21	0.41
1:C:22[A]:ILE:HG13	1:C:23:LEU:N	2.36	0.41
1:A:22:ILE:HD12	1:A:267:GLU:HA	2.04	0.40
2:A:306:CL:CL	1:C:259:ASN:HB2	2.59	0.40
1:B:51[A]:ILE:HD13	1:B:51[A]:ILE:HA	1.83	0.40
4:C:311:PEG:C2	1:D:210:ASN:OD1	2.70	0.40
1:A:5:LYS:HB3	1:A:32:VAL:HG21	2.02	0.40
1:D:2:LYS:NZ	1:D:26:SER:O	2.51	0.40

There are no symmetry-related clashes.

5.3 Torsion angles [i](#)

5.3.1 Protein backbone [i](#)

In the following table, the Percentiles column shows the percent Ramachandran outliers of the chain as a percentile score with respect to all X-ray entries followed by that with respect to entries of similar resolution.

The Analysed column shows the number of residues for which the backbone conformation was analysed, and the total number of residues.

Mol	Chain	Analysed	Favoured	Allowed	Outliers	Percentiles	
1	A	315/308 (102%)	308 (98%)	7 (2%)	0	100	100
1	B	318/308 (103%)	311 (98%)	7 (2%)	0	100	100
1	C	319/308 (104%)	312 (98%)	7 (2%)	0	100	100
1	D	320/308 (104%)	317 (99%)	3 (1%)	0	100	100
All	All	1272/1232 (103%)	1248 (98%)	24 (2%)	0	100	100

There are no Ramachandran outliers to report.

5.3.2 Protein sidechains ⓘ

In the following table, the Percentiles column shows the percent sidechain outliers of the chain as a percentile score with respect to all X-ray entries followed by that with respect to entries of similar resolution.

The Analysed column shows the number of residues for which the sidechain conformation was analysed, and the total number of residues.

Mol	Chain	Analysed	Rotameric	Outliers	Percentiles	
1	A	289/279 (104%)	286 (99%)	3 (1%)	76	59
1	B	291/279 (104%)	288 (99%)	3 (1%)	76	59
1	C	293/279 (105%)	289 (99%)	4 (1%)	67	45
1	D	293/279 (105%)	290 (99%)	3 (1%)	76	59
All	All	1166/1116 (104%)	1153 (99%)	13 (1%)	73	55

All (13) residues with a non-rotameric sidechain are listed below:

Mol	Chain	Res	Type
1	A	31	PHE
1	A	94	LYS
1	A	114	ASN
1	B	31	PHE
1	B	94	LYS
1	B	221	LEU
1	C	22[A]	ILE
1	C	22[B]	ILE
1	C	31	PHE
1	C	94	LYS
1	D	14	ILE
1	D	31	PHE
1	D	94	LYS

Some sidechains can be flipped to improve hydrogen bonding and reduce clashes. There are no such sidechains identified.

5.3.3 RNA ⓘ

There are no RNA molecules in this entry.

5.4 Non-standard residues in protein, DNA, RNA chains [i](#)

There are no non-standard protein/DNA/RNA residues in this entry.

5.5 Carbohydrates [i](#)

There are no carbohydrates in this entry.

5.6 Ligand geometry [i](#)

Of 23 ligands modelled in this entry, 13 are monoatomic - leaving 10 for Mogul analysis.

In the following table, the Counts columns list the number of bonds (or angles) for which Mogul statistics could be retrieved, the number of bonds (or angles) that are observed in the model and the number of bonds (or angles) that are defined in the Chemical Component Dictionary. The Link column lists molecule types, if any, to which the group is linked. The Z score for a bond length (or angle) is the number of standard deviations the observed value is removed from the expected value. A bond length (or angle) with $|Z| > 2$ is considered an outlier worth inspection. RMSZ is the root-mean-square of all Z scores of the bond lengths (or angles).

Mol	Type	Chain	Res	Link	Bond lengths			Bond angles		
					Counts	RMSZ	$\# Z > 2$	Counts	RMSZ	$\# Z > 2$
3	GOL	A	310	-	5,5,5	0.54	0	5,5,5	0.33	0
3	GOL	B	309	-	5,5,5	0.42	0	5,5,5	0.59	0
5	1PE	A	312	-	15,15,15	0.36	0	14,14,14	0.80	0
3	GOL	D	309	-	5,5,5	0.47	0	5,5,5	0.61	0
4	PEG	C	311	-	6,6,6	0.58	0	5,5,5	1.00	0
6	PGE	C	310	-	9,9,9	0.58	0	8,8,8	0.39	0
4	PEG	D	310	-	6,6,6	0.60	0	5,5,5	0.38	0
4	PEG	A	311	-	6,6,6	0.59	0	5,5,5	0.46	0
4	PEG	B	310	-	6,6,6	0.66	0	5,5,5	0.41	0
3	GOL	C	309	-	5,5,5	0.57	0	5,5,5	0.64	0

In the following table, the Chirals column lists the number of chiral outliers, the number of chiral centers analysed, the number of these observed in the model and the number defined in the Chemical Component Dictionary. Similar counts are reported in the Torsion and Rings columns. '-' means no outliers of that kind were identified.

Mol	Type	Chain	Res	Link	Chirals	Torsions	Rings
3	GOL	A	310	-	-	4/4/4/4	-
3	GOL	B	309	-	-	0/4/4/4	-
5	1PE	A	312	-	-	9/13/13/13	-
3	GOL	D	309	-	-	2/4/4/4	-

Continued on next page...

Continued from previous page...

Mol	Type	Chain	Res	Link	Chirals	Torsions	Rings
4	PEG	C	311	-	-	2/4/4/4	-
6	PGE	C	310	-	-	6/7/7/7	-
4	PEG	D	310	-	-	3/4/4/4	-
4	PEG	A	311	-	-	2/4/4/4	-
4	PEG	B	310	-	-	2/4/4/4	-
3	GOL	C	309	-	-	0/4/4/4	-

There are no bond length outliers.

There are no bond angle outliers.

There are no chirality outliers.

All (30) torsion outliers are listed below:

Mol	Chain	Res	Type	Atoms
5	A	312	1PE	C16-C26-OH6-C15
6	C	310	PGE	O2-C3-C4-O3
4	C	311	PEG	C4-C3-O2-C2
5	A	312	1PE	OH6-C15-C25-OH5
3	A	310	GOL	O2-C2-C3-O3
6	C	310	PGE	O1-C1-C2-O2
6	C	310	PGE	O3-C5-C6-O4
3	A	310	GOL	C1-C2-C3-O3
3	D	309	GOL	C1-C2-C3-O3
4	D	310	PEG	O1-C1-C2-O2
4	C	311	PEG	O1-C1-C2-O2
5	A	312	1PE	OH4-C13-C23-OH3
5	A	312	1PE	OH7-C16-C26-OH6
4	A	311	PEG	O2-C3-C4-O4
4	D	310	PEG	O2-C3-C4-O4
4	B	310	PEG	C4-C3-O2-C2
5	A	312	1PE	C25-C15-OH6-C26
5	A	312	1PE	C14-C24-OH4-C13
3	A	310	GOL	O1-C1-C2-O2
6	C	310	PGE	C3-C4-O3-C5
5	A	312	1PE	C24-C14-OH5-C25
6	C	310	PGE	C4-C3-O2-C2
4	B	310	PEG	C1-C2-O2-C3
4	D	310	PEG	C1-C2-O2-C3
4	A	311	PEG	C1-C2-O2-C3
3	D	309	GOL	O2-C2-C3-O3
5	A	312	1PE	OH5-C14-C24-OH4

Continued on next page...

Continued from previous page...

Mol	Chain	Res	Type	Atoms
3	A	310	GOL	O1-C1-C2-C3
6	C	310	PGE	C1-C2-O2-C3
5	A	312	1PE	C23-C13-OH4-C24

There are no ring outliers.

5 monomers are involved in 37 short contacts:

Mol	Chain	Res	Type	Clashes	Symm-Clashes
5	A	312	1PE	16	0
4	C	311	PEG	8	0
6	C	310	PGE	2	0
4	D	310	PEG	2	0
4	A	311	PEG	9	0

5.7 Other polymers [i](#)

There are no such residues in this entry.

5.8 Polymer linkage issues [i](#)

There are no chain breaks in this entry.

6 Fit of model and data ⓘ

6.1 Protein, DNA and RNA chains ⓘ

In the following table, the column labelled ‘#RSRZ> 2’ contains the number (and percentage) of RSRZ outliers, followed by percent RSRZ outliers for the chain as percentile scores relative to all X-ray entries and entries of similar resolution. The OWAB column contains the minimum, median, 95th percentile and maximum values of the occupancy-weighted average B-factor per residue. The column labelled ‘Q< 0.9’ lists the number of (and percentage) of residues with an average occupancy less than 0.9.

Mol	Chain	Analysed	<RSRZ>	#RSRZ>2	OWAB(Å ²)	Q<0.9
1	A	304/308 (98%)	0.08	12 (3%) 39 37	14, 21, 38, 54	0
1	B	303/308 (98%)	0.03	12 (3%) 38 36	13, 22, 34, 44	0
1	C	303/308 (98%)	0.03	9 (2%) 50 48	14, 23, 36, 46	0
1	D	303/308 (98%)	0.14	18 (5%) 22 20	14, 22, 41, 56	0
All	All	1213/1232 (98%)	0.07	51 (4%) 36 33	13, 22, 38, 56	0

All (51) RSRZ outliers are listed below:

Mol	Chain	Res	Type	RSRZ
1	D	153	ARG	5.9
1	A	305	LYS	5.6
1	A	153	ARG	5.3
1	D	154	ASN	5.3
1	D	304	VAL	5.1
1	A	152	LEU	4.8
1	D	155	VAL	4.5
1	C	205	LYS	3.7
1	D	177	ASN	3.6
1	D	303	SER	3.5
1	B	177	ASN	3.5
1	A	205	LYS	3.4
1	D	152	LEU	3.4
1	C	22[A]	ILE	3.4
1	A	154	ASN	3.3
1	C	177	ASN	3.2
1	C	40	VAL	3.2
1	D	302	ASN	3.1
1	D	179	ASP	3.0
1	A	177	ASN	2.8
1	A	155	VAL	2.8

Continued on next page...

Continued from previous page...

Mol	Chain	Res	Type	RSRZ
1	B	227[A]	LEU	2.8
1	B	205	LYS	2.8
1	D	192[A]	ASN	2.7
1	B	179	ASP	2.6
1	B	68	PHE	2.6
1	D	3	ASN	2.5
1	B	92	VAL	2.4
1	C	191	ASP	2.4
1	C	28	ARG	2.4
1	C	2	LYS	2.4
1	D	119	VAL	2.4
1	D	92	VAL	2.3
1	B	3	ASN	2.3
1	B	191	ASP	2.3
1	D	205	LYS	2.3
1	A	179	ASP	2.3
1	B	91	TYR	2.3
1	A	178	GLU	2.2
1	A	181	GLU	2.2
1	B	28	ARG	2.2
1	D	156	ARG	2.2
1	D	183[A]	SER	2.2
1	D	68	PHE	2.1
1	A	68	PHE	2.1
1	D	191	ASP	2.1
1	C	112	LYS	2.1
1	B	55	ASP	2.1
1	A	91	TYR	2.0
1	B	168	VAL	2.0
1	C	92	VAL	2.0

6.2 Non-standard residues in protein, DNA, RNA chains ⓘ

There are no non-standard protein/DNA/RNA residues in this entry.

6.3 Carbohydrates ⓘ

There are no carbohydrates in this entry.

6.4 Ligands [i](#)

In the following table, the Atoms column lists the number of modelled atoms in the group and the number defined in the chemical component dictionary. The B-factors column lists the minimum, median, 95th percentile and maximum values of B factors of atoms in the group. The column labelled 'Q<0.9' lists the number of atoms with occupancy less than 0.9.

Mol	Type	Chain	Res	Atoms	RSCC	RSR	B-factors(Å ²)	Q<0.9
4	PEG	B	310	7/7	0.60	0.23	40,42,44,46	0
4	PEG	D	310	7/7	0.74	0.24	41,41,44,44	0
6	PGE	C	310	10/10	0.75	0.23	31,44,46,47	0
4	PEG	C	311	7/7	0.77	0.23	34,41,42,43	0
4	PEG	A	311	7/7	0.78	0.26	38,41,43,43	0
5	1PE	A	312	16/16	0.86	0.27	39,43,44,46	0
3	GOL	B	309	6/6	0.88	0.11	29,31,33,33	0
3	GOL	D	309	6/6	0.91	0.10	29,33,36,37	0
2	CL	D	308	1/1	0.92	0.11	46,46,46,46	0
3	GOL	C	309	6/6	0.93	0.09	28,30,32,32	0
3	GOL	A	310	6/6	0.95	0.10	29,34,35,36	0
2	CL	C	308	1/1	0.95	0.11	47,47,47,47	0
2	CL	A	308	1/1	0.96	0.07	35,35,35,35	0
2	CL	A	309	1/1	0.97	0.07	38,38,38,38	0
2	CL	B	306	1/1	0.98	0.08	19,19,19,19	0
2	CL	D	307	1/1	0.98	0.09	36,36,36,36	0
2	CL	C	307	1/1	0.98	0.07	31,31,31,31	0
2	CL	B	307	1/1	0.99	0.09	31,31,31,31	0
2	CL	C	306	1/1	0.99	0.15	31,31,31,31	0
2	CL	D	306	1/1	0.99	0.12	31,31,31,31	0
2	CL	A	306	1/1	0.99	0.07	18,18,18,18	0
2	CL	B	308	1/1	0.99	0.10	44,44,44,44	0
2	CL	A	307	1/1	0.99	0.13	31,31,31,31	0

6.5 Other polymers [i](#)

There are no such residues in this entry.