



Full wwPDB X-ray Structure Validation Report ⓘ

Jun 15, 2020 – 07:44 am BST

PDB ID : 4UUI
Title : A case study for twinned data analysis: multiple crystal forms of the enzyme
N-acetyl-neuraminic lyase
Authors : Campeotto, I.; Phillips, S.E.V.; Pearson, A.R.
Deposited on : 2014-07-29
Resolution : 1.79 Å(reported)

This is a Full wwPDB X-ray Structure Validation Report for a publicly released PDB entry.

We welcome your comments at validation@mail.wwpdb.org

A user guide is available at

<https://www.wwpdb.org/validation/2017/XrayValidationReportHelp>

with specific help available everywhere you see the ⓘ symbol.

The following versions of software and data (see [references ⓘ](#)) were used in the production of this report:

MolProbity : 4.02b-467
Mogul : 1.8.5 (274361), CSD as541be (2020)
Xtriage (Phenix) : 1.13
EDS : 2.11
Percentile statistics : 20191225.v01 (using entries in the PDB archive December 25th 2019)
Refmac : 5.8.0158
CCP4 : 7.0.044 (Gargrove)
Ideal geometry (proteins) : Engh & Huber (2001)
Ideal geometry (DNA, RNA) : Parkinson et al. (1996)
Validation Pipeline (wwPDB-VP) : 2.11

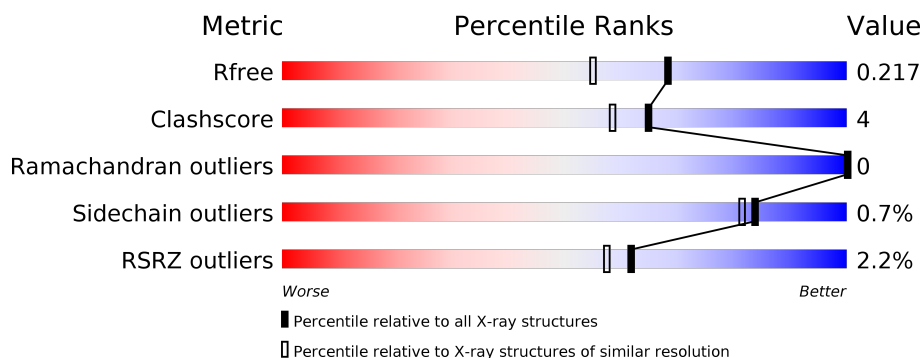
1 Overall quality at a glance

The following experimental techniques were used to determine the structure:

X-RAY DIFFRACTION

The reported resolution of this entry is 1.79 Å.

Percentile scores (ranging between 0-100) for global validation metrics of the entry are shown in the following graphic. The table shows the number of entries on which the scores are based.



Metric	Whole archive (#Entries)	Similar resolution (#Entries, resolution range(Å))
R_{free}	130704	5950 (1.80-1.80)
Clashscore	141614	6793 (1.80-1.80)
Ramachandran outliers	138981	6697 (1.80-1.80)
Sidechain outliers	138945	6696 (1.80-1.80)
RSRZ outliers	127900	5850 (1.80-1.80)

The table below summarises the geometric issues observed across the polymeric chains and their fit to the electron density. The red, orange, yellow and green segments on the lower bar indicate the fraction of residues that contain outliers for ≥ 3 , 2, 1 and 0 types of geometric quality criteria respectively. A grey segment represents the fraction of residues that are not modelled. The numeric value for each fraction is indicated below the corresponding segment, with a dot representing fractions $\leq 5\%$. The upper red bar (where present) indicates the fraction of residues that have poor fit to the electron density. The numeric value is given above the bar.

Mol	Chain	Length	Quality of chain
1	A	304	<div> <div>2%</div> <div> <div></div> <div>88%</div> <div>10%</div> <div></div> </div> </div>
1	B	304	<div> <div>3%</div> <div> <div></div> <div>88%</div> <div>11%</div> <div></div> </div> </div>
1	C	304	<div> <div>2%</div> <div> <div></div> <div>89%</div> <div>9%</div> <div></div> </div> </div>
1	D	304	<div> <div>2%</div> <div> <div></div> <div>91%</div> <div>7%</div> <div></div> </div> </div>

2 Entry composition

There are 5 unique types of molecules in this entry. The entry contains 10169 atoms, of which 0 are hydrogens and 0 are deuteriums.

In the tables below, the ZeroOcc column contains the number of atoms modelled with zero occupancy, the AltConf column contains the number of residues with at least one atom in alternate conformation and the Trace column contains the number of residues modelled with at most 2 atoms.

- Molecule 1 is a protein called N-ACETYLNEURAMINATE LYASE.

Mol	Chain	Residues	Atoms					ZeroOcc	AltConf	Trace
1	A	300	Total	C	N	O	S	0	6	0
			2357	1503	402	441	11			
1	B	298	Total	C	N	O	S	0	4	0
			2336	1489	400	435	12			
1	C	299	Total	C	N	O	S	0	6	0
			2352	1499	403	439	11			
1	D	299	Total	C	N	O	S	0	4	0
			2338	1489	399	439	11			

There are 40 discrepancies between the modelled and reference sequences:

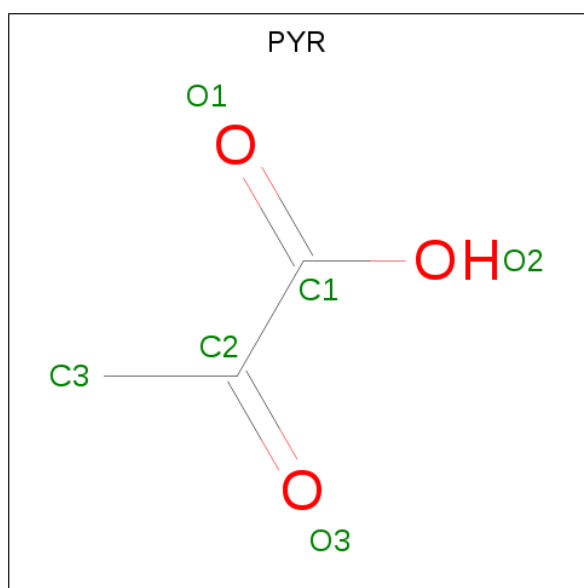
Chain	Residue	Modelled	Actual	Comment	Reference
A	-6	MET	-	expression tag	UNP P0A6L4
A	-5	GLU	-	expression tag	UNP P0A6L4
A	-4	HIS	-	expression tag	UNP P0A6L4
A	-3	HIS	-	expression tag	UNP P0A6L4
A	-2	HIS	-	expression tag	UNP P0A6L4
A	-1	HIS	-	expression tag	UNP P0A6L4
A	0	HIS	-	expression tag	UNP P0A6L4
A	1	HIS	-	expression tag	UNP P0A6L4
A	137	PHE	TYR	engineered mutation	UNP P0A6L4
A	192	ASN	GLU	engineered mutation	UNP P0A6L4
B	-6	MET	-	expression tag	UNP P0A6L4
B	-5	GLU	-	expression tag	UNP P0A6L4
B	-4	HIS	-	expression tag	UNP P0A6L4
B	-3	HIS	-	expression tag	UNP P0A6L4
B	-2	HIS	-	expression tag	UNP P0A6L4
B	-1	HIS	-	expression tag	UNP P0A6L4
B	0	HIS	-	expression tag	UNP P0A6L4
B	1	HIS	-	expression tag	UNP P0A6L4
B	137	PHE	TYR	engineered mutation	UNP P0A6L4
B	192	ASN	GLU	engineered mutation	UNP P0A6L4
C	-6	MET	-	expression tag	UNP P0A6L4

Continued on next page...

Continued from previous page...

Chain	Residue	Modelled	Actual	Comment	Reference
C	-5	GLU	-	expression tag	UNP P0A6L4
C	-4	HIS	-	expression tag	UNP P0A6L4
C	-3	HIS	-	expression tag	UNP P0A6L4
C	-2	HIS	-	expression tag	UNP P0A6L4
C	-1	HIS	-	expression tag	UNP P0A6L4
C	0	HIS	-	expression tag	UNP P0A6L4
C	1	HIS	-	expression tag	UNP P0A6L4
C	137	PHE	TYR	engineered mutation	UNP P0A6L4
C	192	ASN	GLU	engineered mutation	UNP P0A6L4
D	-6	MET	-	expression tag	UNP P0A6L4
D	-5	GLU	-	expression tag	UNP P0A6L4
D	-4	HIS	-	expression tag	UNP P0A6L4
D	-3	HIS	-	expression tag	UNP P0A6L4
D	-2	HIS	-	expression tag	UNP P0A6L4
D	-1	HIS	-	expression tag	UNP P0A6L4
D	0	HIS	-	expression tag	UNP P0A6L4
D	1	HIS	-	expression tag	UNP P0A6L4
D	137	PHE	TYR	engineered mutation	UNP P0A6L4
D	192	ASN	GLU	engineered mutation	UNP P0A6L4

- Molecule 2 is PYRUVIC ACID (three-letter code: PYR) (formula: $C_3H_4O_3$).



Mol	Chain	Residues	Atoms			ZeroOcc	AltConf
2	A	1	Total	C	O	0	0
			6	3	3		
2	B	1	Total	C	O	0	0
			6	3	3		

Continued on next page...

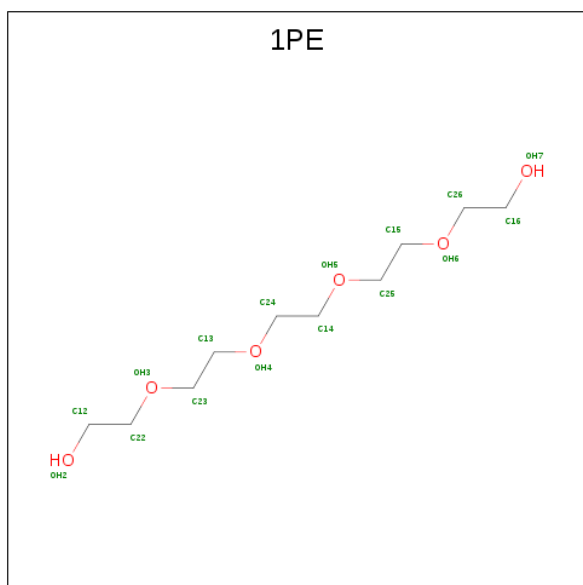
Continued from previous page...

Mol	Chain	Residues	Atoms			ZeroOcc	AltConf
2	C	1	Total	C	O	0	0
			6	3	3		
2	D	1	Total	C	O	0	0
			6	3	3		

- Molecule 3 is SODIUM ION (three-letter code: NA) (formula: Na).

Mol	Chain	Residues	Atoms			ZeroOcc	AltConf
3	B	1	Total	Na		0	0
			1	1			

- Molecule 4 is PENTAETHYLENE GLYCOL (three-letter code: 1PE) (formula: C₁₀H₂₂O₆).



Mol	Chain	Residues	Atoms			ZeroOcc	AltConf
4	B	1	Total	C	O	0	0
			8	5	3		
4	D	1	Total	C	O	0	0
			8	5	3		

- Molecule 5 is water.

Mol	Chain	Residues	Atoms			ZeroOcc	AltConf
5	A	210	Total	O		0	0
			210	210			
5	B	188	Total	O		0	0
			188	188			

Continued on next page...

Continued from previous page...

Mol	Chain	Residues	Atoms		ZeroOcc	AltConf
5	C	172	Total	O	0	0
			172	172		
5	D	175	Total	O	0	0
			175	175		

• Molecule 1: N-ACETYLNEURAMINATE LYASE



4 Data and refinement statistics

Property	Value	Source
Space group	P 1 21 1	Depositor
Cell constants a, b, c, α , β , γ	77.98Å 116.67Å 83.68Å 90.00° 118.06° 90.00°	Depositor
Resolution (Å)	73.85 – 1.79 73.84 – 1.79	Depositor EDS
% Data completeness (in resolution range)	98.4 (73.85-1.79) 98.8 (73.84-1.79)	Depositor EDS
R_{merge}	0.12	Depositor
R_{sym}	(Not available)	Depositor
$\langle I/\sigma(I) \rangle$ ¹	2.84 (at 1.80Å)	Xtriage
Refinement program	REFMAC 5.6.0105	Depositor
R, R_{free}	0.155 , 0.184 0.189 , 0.217	Depositor DCC
R_{free} test set	6165 reflections (5.04%)	wwPDB-VP
Wilson B-factor (Å ²)	15.7	Xtriage
Anisotropy	0.042	Xtriage
Bulk solvent k_{sol} (e/Å ³), B_{sol} (Å ²)	0.36 , 43.8	EDS
L-test for twinning ²	$\langle L \rangle = 0.52$, $\langle L^2 \rangle = 0.36$	Xtriage
Estimated twinning fraction	0.106 for h,-k,-h-l	Xtriage
F_o, F_c correlation	0.94	EDS
Total number of atoms	10169	wwPDB-VP
Average B, all atoms (Å ²)	16.0	wwPDB-VP

Xtriage's analysis on translational NCS is as follows: *The largest off-origin peak in the Patterson function is 4.15% of the height of the origin peak. No significant pseudotranslation is detected.*

¹Intensities estimated from amplitudes.

²Theoretical values of $\langle |L| \rangle$, $\langle L^2 \rangle$ for acentric reflections are 0.5, 0.333 respectively for untwinned datasets, and 0.375, 0.2 for perfectly twinned datasets.

5 Model quality [i](#)

5.1 Standard geometry [i](#)

Bond lengths and bond angles in the following residue types are not validated in this section: KPI, PYR, 1PE, NA

The Z score for a bond length (or angle) is the number of standard deviations the observed value is removed from the expected value. A bond length (or angle) with $|Z| > 5$ is considered an outlier worth inspection. RMSZ is the root-mean-square of all Z scores of the bond lengths (or angles).

Mol	Chain	Bond lengths		Bond angles	
		RMSZ	$\# Z > 5$	RMSZ	$\# Z > 5$
1	A	0.43	1/2404 (0.0%)	0.60	2/3253 (0.1%)
1	B	0.40	0/2376	0.58	0/3213
1	C	0.41	0/2398	0.57	0/3243
1	D	0.42	0/2378	0.60	0/3217
All	All	0.41	1/9556 (0.0%)	0.59	2/12926 (0.0%)

All (1) bond length outliers are listed below:

Mol	Chain	Res	Type	Atoms	Z	Observed(Å)	Ideal(Å)
1	A	218	GLN	CA-C	5.01	1.66	1.52

All (2) bond angle outliers are listed below:

Mol	Chain	Res	Type	Atoms	Z	Observed(°)	Ideal(°)
1	A	218	GLN	CA-C-N	-6.20	103.80	116.20
1	A	218	GLN	CA-C-O	5.95	132.59	120.10

There are no chirality outliers.

There are no planarity outliers.

5.2 Too-close contacts [i](#)

In the following table, the Non-H and H(model) columns list the number of non-hydrogen atoms and hydrogen atoms in the chain respectively. The H(added) column lists the number of hydrogen atoms added and optimized by MolProbity. The Clashes column lists the number of clashes within the asymmetric unit, whereas Symm-Clashes lists symmetry related clashes.

Mol	Chain	Non-H	H(model)	H(added)	Clashes	Symm-Clashes
1	A	2357	0	2381	22	0

Continued on next page...

Continued from previous page...

Mol	Chain	Non-H	H(model)	H(added)	Clashes	Symm-Clashes
1	B	2336	0	2363	21	0
1	C	2352	0	2381	18	0
1	D	2338	0	2355	19	0
2	A	6	0	3	0	0
2	B	6	0	3	2	0
2	C	6	0	3	0	0
2	D	6	0	3	0	0
3	B	1	0	0	0	0
4	B	8	0	9	2	0
4	D	8	0	9	0	0
5	A	210	0	0	1	0
5	B	188	0	0	1	0
5	C	172	0	0	1	0
5	D	175	0	0	1	0
All	All	10169	0	9510	77	0

The all-atom clashscore is defined as the number of clashes found per 1000 atoms (including hydrogen atoms). The all-atom clashscore for this structure is 4.

All (77) close contacts within the same asymmetric unit are listed below, sorted by their clash magnitude.

Atom-1	Atom-2	Interatomic distance (Å)	Clash overlap (Å)
1:D:9[B]:MET:CE	1:D:77:ILE:HD11	1.97	0.95
1:D:20:GLN:HE22	1:D:272:LYS:H	1.19	0.90
1:D:9[B]:MET:HE2	1:D:77:ILE:HD11	1.60	0.83
1:A:223:ALA:HB1	1:A:231[A]:THR:HG23	1.71	0.73
1:A:4:ASN:HD22	1:A:75:LYS:NZ	1.88	0.71
1:A:224:LEU:O	1:C:229:ILE:HD12	1.92	0.69
1:D:9[B]:MET:CE	1:D:77:ILE:CD1	2.70	0.69
1:C:173:GLN:HA	1:C:176:GLN:HE21	1.59	0.67
1:A:223:ALA:CB	1:A:231[A]:THR:HG23	2.26	0.66
1:D:9[B]:MET:HE2	1:D:77:ILE:CD1	2.26	0.65
1:C:79:HIS:HE1	1:C:106:VAL:H	1.43	0.64
1:D:9[B]:MET:HE3	1:D:77:ILE:HD11	1.80	0.62
1:A:79:HIS:HE1	1:A:106:VAL:H	1.47	0.62
1:A:173:GLN:HA	1:A:176:GLN:HE21	1.64	0.62
1:B:79:HIS:HE1	1:B:106:VAL:H	1.49	0.60
1:D:173:GLN:HA	1:D:176:GLN:HE21	1.68	0.59
1:A:4:ASN:HD22	1:A:75:LYS:HZ1	1.52	0.57
1:D:9[B]:MET:HE3	1:D:77:ILE:CD1	2.34	0.57
1:C:165:KPI:H1B	5:C:2114:HOH:O	2.05	0.57

Continued on next page...

Continued from previous page...

Atom-1	Atom-2	Interatomic distance (Å)	Clash overlap (Å)
1:A:171:LEU:HD12	1:C:171:LEU:HD12	1.86	0.56
1:B:38:GLY:O	1:B:218[B]:GLN:NE2	2.39	0.55
1:A:223:ALA:HB1	1:A:231[A]:THR:CG2	2.35	0.55
1:C:156:VAL:HA	1:C:161:VAL:HG11	1.89	0.54
1:C:86:ALA:HA	1:C:89:GLN:HE21	1.73	0.54
1:D:20:GLN:HE22	1:D:272:LYS:N	1.96	0.53
1:D:79:HIS:HE1	1:D:106:VAL:H	1.56	0.53
1:D:194:PHE:CE2	1:D:198:LEU:HD11	2.44	0.52
1:B:242:VAL:HG13	1:B:288:LEU:HD21	1.91	0.52
1:A:4:ASN:HD22	1:A:75:LYS:HZ2	1.57	0.50
1:C:192:ASN:HA	1:C:240:ASN:HD21	1.78	0.49
1:A:135:VAL:HG22	1:A:163:ALA:HB3	1.95	0.49
1:B:144:GLY:HA2	4:B:1298:1PE:H122	1.95	0.48
1:D:236:GLN:HE21	1:D:240:ASN:ND2	2.12	0.48
1:C:218[B]:GLN:HA	1:C:218[B]:GLN:HE21	1.79	0.48
1:A:120:ASP:OD1	1:A:123:ARG:NH1	2.46	0.48
1:A:166:GLN:HA	1:A:166:GLN:HE21	1.77	0.48
1:B:236:GLN:HE21	1:B:240:ASN:HD21	1.61	0.47
1:B:251:VAL:HG21	2:B:1299:PYR:H31	1.96	0.47
1:C:108:PRO:HD2	1:C:118:HIS:HD2	1.79	0.47
1:C:153:ASN:OD1	1:C:181:HIS:HE1	1.98	0.46
1:B:192:ASN:HA	1:B:240:ASN:HD21	1.81	0.46
2:B:1299:PYR:H32	5:B:2155:HOH:O	2.16	0.46
1:B:236:GLN:HE21	1:B:240:ASN:ND2	2.14	0.45
1:B:96:LYS:HD3	1:B:132:LEU:HD13	1.99	0.45
1:B:153:ASN:OD1	1:B:181:HIS:HE1	1.99	0.45
1:D:165:KPI:H1B	5:D:2120:HOH:O	2.15	0.45
1:C:194:PHE:CE2	1:C:198:LEU:HD11	2.53	0.44
1:D:192:ASN:HA	1:D:240:ASN:HD21	1.83	0.44
1:C:135:VAL:HG22	1:C:163:ALA:HB3	1.98	0.44
1:B:39:ILE:HA	1:B:218[B]:GLN:NE2	2.33	0.44
1:B:39:ILE:HA	1:B:218[B]:GLN:HE22	1.82	0.44
1:C:79:HIS:CE1	1:C:106:VAL:H	2.31	0.44
1:B:86:ALA:HA	1:B:89:GLN:HE21	1.83	0.44
1:B:135:VAL:HG22	1:B:163:ALA:HB3	1.99	0.43
1:A:165:KPI:H1B	5:A:2141:HOH:O	2.16	0.43
1:A:156:VAL:HA	1:A:161:VAL:HG11	2.00	0.43
1:A:56:LEU:HD11	1:A:87:GLU:HG2	2.01	0.43
1:C:242:VAL:HG13	1:C:288:LEU:HD21	2.00	0.43
1:D:0:HIS:O	1:D:3:THR:HG23	2.19	0.43
1:B:253:ARG:HG3	1:B:277:VAL:HG22	2.00	0.42

Continued on next page...

Continued from previous page...

Atom-1	Atom-2	Interatomic distance (Å)	Clash overlap (Å)
1:B:171:LEU:HD12	1:D:171:LEU:HD12	2.01	0.42
1:A:179:ARG:HD3	1:C:237:THR:HG23	2.01	0.42
1:A:228:ASP:CG	1:A:231[A]:THR:HG22	2.39	0.42
1:C:166:GLN:HE21	1:C:166:GLN:HA	1.85	0.42
1:C:236:GLN:HE21	1:C:240:ASN:ND2	2.17	0.42
1:A:192:ASN:HA	1:A:240:ASN:HD21	1.84	0.42
1:B:215:TRP:CE3	1:B:296:ARG:HD3	2.55	0.42
1:D:108:PRO:HD2	1:D:118:HIS:HD2	1.85	0.41
1:A:194:PHE:CE2	1:A:198:LEU:HD11	2.55	0.41
1:A:236:GLN:HE21	1:A:240:ASN:ND2	2.18	0.41
1:B:156:VAL:HA	1:B:161:VAL:HG11	2.01	0.41
1:B:9[B]:MET:HE2	1:B:77:ILE:HD12	2.02	0.41
1:B:144:GLY:CA	4:B:1298:1PE:H122	2.51	0.41
1:A:45:GLY:O	1:A:51:ALA:HB2	2.21	0.40

There are no symmetry-related clashes.

5.3 Torsion angles [i](#)

5.3.1 Protein backbone [i](#)

In the following table, the Percentiles column shows the percent Ramachandran outliers of the chain as a percentile score with respect to all X-ray entries followed by that with respect to entries of similar resolution.

The Analysed column shows the number of residues for which the backbone conformation was analysed, and the total number of residues.

Mol	Chain	Analysed	Favoured	Allowed	Outliers	Percentiles	
1	A	303/304 (100%)	299 (99%)	4 (1%)	0	100	100
1	B	299/304 (98%)	295 (99%)	4 (1%)	0	100	100
1	C	302/304 (99%)	297 (98%)	5 (2%)	0	100	100
1	D	300/304 (99%)	294 (98%)	6 (2%)	0	100	100
All	All	1204/1216 (99%)	1185 (98%)	19 (2%)	0	100	100

There are no Ramachandran outliers to report.

5.3.2 Protein sidechains ⓘ

In the following table, the Percentiles column shows the percent sidechain outliers of the chain as a percentile score with respect to all X-ray entries followed by that with respect to entries of similar resolution.

The Analysed column shows the number of residues for which the sidechain conformation was analysed, and the total number of residues.

Mol	Chain	Analysed	Rotameric	Outliers	Percentiles	
1	A	252/250 (101%)	250 (99%)	2 (1%)	81	78
1	B	249/250 (100%)	247 (99%)	2 (1%)	81	78
1	C	251/250 (100%)	249 (99%)	2 (1%)	81	78
1	D	249/250 (100%)	248 (100%)	1 (0%)	91	89
All	All	1001/1000 (100%)	994 (99%)	7 (1%)	84	81

All (7) residues with a non-rotameric sidechain are listed below:

Mol	Chain	Res	Type
1	A	166	GLN
1	A	263	ASP
1	B	166	GLN
1	B	182	PRO
1	C	166	GLN
1	C	263	ASP
1	D	166	GLN

Some sidechains can be flipped to improve hydrogen bonding and reduce clashes. All (34) such sidechains are listed below:

Mol	Chain	Res	Type
1	A	4	ASN
1	A	18	GLN
1	A	79	HIS
1	A	118	HIS
1	A	138	ASN
1	A	166	GLN
1	A	176	GLN
1	A	240	ASN
1	B	37	GLN
1	B	79	HIS
1	B	89	GLN
1	B	118	HIS

Continued on next page...

Continued from previous page...

Mol	Chain	Res	Type
1	B	138	ASN
1	B	166	GLN
1	B	181	HIS
1	B	240	ASN
1	C	79	HIS
1	C	89	GLN
1	C	118	HIS
1	C	138	ASN
1	C	166	GLN
1	C	176	GLN
1	C	181	HIS
1	C	240	ASN
1	C	294	GLN
1	D	20	GLN
1	D	37	GLN
1	D	79	HIS
1	D	118	HIS
1	D	138	ASN
1	D	166	GLN
1	D	176	GLN
1	D	181	HIS
1	D	240	ASN

5.3.3 RNA ⓘ

There are no RNA molecules in this entry.

5.4 Non-standard residues in protein, DNA, RNA chains ⓘ

4 non-standard protein/DNA/RNA residues are modelled in this entry.

In the following table, the Counts columns list the number of bonds (or angles) for which Mogul statistics could be retrieved, the number of bonds (or angles) that are observed in the model and the number of bonds (or angles) that are defined in the Chemical Component Dictionary. The Link column lists molecule types, if any, to which the group is linked. The Z score for a bond length (or angle) is the number of standard deviations the observed value is removed from the expected value. A bond length (or angle) with $|Z| > 2$ is considered an outlier worth inspection. RMSZ is the root-mean-square of all Z scores of the bond lengths (or angles).

Mol	Type	Chain	Res	Link	Bond lengths			Bond angles		
					Counts	RMSZ	$\# Z > 2$	Counts	RMSZ	$\# Z > 2$
1	KPI	C	165	1	10,13,14	0.90	0	6,15,17	0.97	0

Mol	Type	Chain	Res	Link	Bond lengths			Bond angles		
					Counts	RMSZ	# Z > 2	Counts	RMSZ	# Z > 2
1	KPI	A	165	1	10,13,14	0.94	0	6,15,17	1.12	1 (16%)
1	KPI	D	165	1	10,13,14	0.93	0	6,15,17	0.79	0
1	KPI	B	165	1	10,13,14	0.81	0	6,15,17	1.24	1 (16%)

In the following table, the Chirals column lists the number of chiral outliers, the number of chiral centers analysed, the number of these observed in the model and the number defined in the Chemical Component Dictionary. Similar counts are reported in the Torsion and Rings columns. '-' means no outliers of that kind were identified.

Mol	Type	Chain	Res	Link	Chirals	Torsions	Rings
1	KPI	C	165	1	-	1/9/14/16	-
1	KPI	A	165	1	-	2/9/14/16	-
1	KPI	D	165	1	-	2/9/14/16	-
1	KPI	B	165	1	-	0/9/14/16	-

There are no bond length outliers.

All (2) bond angle outliers are listed below:

Mol	Chain	Res	Type	Atoms	Z	Observed(°)	Ideal(°)
1	B	165	KPI	C1-CX1-CX2	2.59	120.79	117.92
1	A	165	KPI	C1-CX1-CX2	2.56	120.76	117.92

There are no chirality outliers.

All (5) torsion outliers are listed below:

Mol	Chain	Res	Type	Atoms
1	A	165	KPI	C1-CX1-NZ-CE
1	A	165	KPI	CX2-CX1-NZ-CE
1	D	165	KPI	C1-CX1-NZ-CE
1	D	165	KPI	CX2-CX1-NZ-CE
1	C	165	KPI	C1-CX1-NZ-CE

There are no ring outliers.

3 monomers are involved in 3 short contacts:

Mol	Chain	Res	Type	Clashes	Symm-Clashes
1	C	165	KPI	1	0
1	A	165	KPI	1	0
1	D	165	KPI	1	0

5.5 Carbohydrates

There are no carbohydrates in this entry.

5.6 Ligand geometry

Of 7 ligands modelled in this entry, 1 is monoatomic - leaving 6 for Mogul analysis.

In the following table, the Counts columns list the number of bonds (or angles) for which Mogul statistics could be retrieved, the number of bonds (or angles) that are observed in the model and the number of bonds (or angles) that are defined in the Chemical Component Dictionary. The Link column lists molecule types, if any, to which the group is linked. The Z score for a bond length (or angle) is the number of standard deviations the observed value is removed from the expected value. A bond length (or angle) with $|Z| > 2$ is considered an outlier worth inspection. RMSZ is the root-mean-square of all Z scores of the bond lengths (or angles).

Mol	Type	Chain	Res	Link	Bond lengths			Bond angles		
					Counts	RMSZ	# Z > 2	Counts	RMSZ	# Z > 2
4	1PE	D	1298	-	7,7,15	0.65	0	6,6,14	0.69	0
2	PYR	C	1298	-	2,5,5	2.15	1 (50%)	2,6,6	0.05	0
2	PYR	A	1298	-	2,5,5	2.03	1 (50%)	2,6,6	0.17	0
2	PYR	B	1299	-	2,5,5	2.03	1 (50%)	2,6,6	0.50	0
4	1PE	B	1298	-	7,7,15	0.64	0	6,6,14	0.39	0
2	PYR	D	1299	-	2,5,5	1.94	1 (50%)	2,6,6	0.35	0

In the following table, the Chirals column lists the number of chiral outliers, the number of chiral centers analysed, the number of these observed in the model and the number defined in the Chemical Component Dictionary. Similar counts are reported in the Torsion and Rings columns. '-' means no outliers of that kind were identified.

Mol	Type	Chain	Res	Link	Chirals	Torsions	Rings
4	1PE	D	1298	-	-	4/5/5/13	-
2	PYR	C	1298	-	-	0/0/4/4	-
2	PYR	A	1298	-	-	0/0/4/4	-
2	PYR	B	1299	-	-	0/0/4/4	-
4	1PE	B	1298	-	-	3/5/5/13	-
2	PYR	D	1299	-	-	0/0/4/4	-

All (4) bond length outliers are listed below:

Mol	Chain	Res	Type	Atoms	Z	Observed(Å)	Ideal(Å)
2	C	1298	PYR	O3-C2	3.01	1.32	1.22
2	B	1299	PYR	O3-C2	2.87	1.31	1.22

Continued on next page...

Continued from previous page...

Mol	Chain	Res	Type	Atoms	Z	Observed(Å)	Ideal(Å)
2	A	1298	PYR	O3-C2	2.85	1.31	1.22
2	D	1299	PYR	O3-C2	2.74	1.31	1.22

There are no bond angle outliers.

There are no chirality outliers.

All (7) torsion outliers are listed below:

Mol	Chain	Res	Type	Atoms
4	B	1298	1PE	C13-C23-OH3-C22
4	D	1298	1PE	OH4-C13-C23-OH3
4	D	1298	1PE	OH2-C12-C22-OH3
4	D	1298	1PE	C12-C22-OH3-C23
4	B	1298	1PE	C12-C22-OH3-C23
4	B	1298	1PE	OH4-C13-C23-OH3
4	D	1298	1PE	C13-C23-OH3-C22

There are no ring outliers.

2 monomers are involved in 4 short contacts:

Mol	Chain	Res	Type	Clashes	Symm-Clashes
2	B	1299	PYR	2	0
4	B	1298	1PE	2	0

5.7 Other polymers [i](#)

There are no such residues in this entry.

5.8 Polymer linkage issues [i](#)

There are no chain breaks in this entry.

6 Fit of model and data ⓘ

6.1 Protein, DNA and RNA chains ⓘ

In the following table, the column labelled ‘#RSRZ> 2’ contains the number (and percentage) of RSRZ outliers, followed by percent RSRZ outliers for the chain as percentile scores relative to all X-ray entries and entries of similar resolution. The OWAB column contains the minimum, median, 95th percentile and maximum values of the occupancy-weighted average B-factor per residue. The column labelled ‘Q< 0.9’ lists the number of (and percentage) of residues with an average occupancy less than 0.9.

Mol	Chain	Analysed	<RSRZ>	#RSRZ>2	OWAB(Å ²)	Q<0.9
1	A	299/304 (98%)	-0.04	5 (1%) 70 66	8, 14, 30, 47	2 (0%)
1	B	297/304 (97%)	0.00	9 (3%) 50 44	8, 15, 29, 52	2 (0%)
1	C	298/304 (98%)	-0.04	6 (2%) 65 61	8, 13, 29, 55	0
1	D	298/304 (98%)	-0.02	6 (2%) 65 61	9, 14, 27, 52	0
All	All	1192/1216 (98%)	-0.02	26 (2%) 62 57	8, 14, 29, 55	4 (0%)

All (26) RSRZ outliers are listed below:

Mol	Chain	Res	Type	RSRZ
1	B	0	HIS	6.8
1	C	1	HIS	5.6
1	D	3	THR	5.3
1	A	0	HIS	5.0
1	D	0	HIS	4.8
1	B	1	HIS	4.5
1	D	1	HIS	4.4
1	A	3	THR	4.4
1	C	0	HIS	3.6
1	D	296	ARG	3.3
1	B	3	THR	3.3
1	C	296	ARG	3.2
1	A	1	HIS	2.9
1	C	3	THR	2.9
1	C	290	GLN	2.7
1	A	297	GLY	2.6
1	B	294	GLN	2.6
1	A	35[A]	ILE	2.5
1	C	297	GLY	2.4
1	B	229	ILE	2.3
1	B	22	LEU	2.2

Continued on next page...

Continued from previous page...

Mol	Chain	Res	Type	RSRZ
1	D	230	GLN	2.1
1	B	146	LYS	2.1
1	B	6	ARG	2.1
1	D	4	ASN	2.1
1	B	293[A]	MET	2.0

6.2 Non-standard residues in protein, DNA, RNA chains [i](#)

In the following table, the Atoms column lists the number of modelled atoms in the group and the number defined in the chemical component dictionary. The B-factors column lists the minimum, median, 95th percentile and maximum values of B factors of atoms in the group. The column labelled 'Q< 0.9' lists the number of atoms with occupancy less than 0.9.

Mol	Type	Chain	Res	Atoms	RSCC	RSR	B-factors(Å ²)	Q<0.9
1	KPI	C	165	14/15	0.95	0.09	9,10,11,12	0
1	KPI	D	165	14/15	0.95	0.09	11,12,13,15	0
1	KPI	B	165	14/15	0.95	0.08	11,12,13,13	0
1	KPI	A	165	14/15	0.96	0.09	11,12,13,14	0

6.3 Carbohydrates [i](#)

There are no carbohydrates in this entry.

6.4 Ligands [i](#)

In the following table, the Atoms column lists the number of modelled atoms in the group and the number defined in the chemical component dictionary. The B-factors column lists the minimum, median, 95th percentile and maximum values of B factors of atoms in the group. The column labelled 'Q< 0.9' lists the number of atoms with occupancy less than 0.9.

Mol	Type	Chain	Res	Atoms	RSCC	RSR	B-factors(Å ²)	Q<0.9
3	NA	B	1297	1/1	0.73	0.13	30,30,30,30	0
2	PYR	D	1299	6/6	0.75	0.19	32,35,37,40	0
2	PYR	A	1298	6/6	0.76	0.16	24,26,27,28	0
4	1PE	B	1298	8/16	0.77	0.16	28,29,30,33	0
2	PYR	C	1298	6/6	0.78	0.16	32,34,36,36	0
2	PYR	B	1299	6/6	0.83	0.15	28,31,32,33	0
4	1PE	D	1298	8/16	0.88	0.12	27,28,30,32	0

6.5 Other polymers [i](#)

There are no such residues in this entry.