



Full wwPDB X-ray Structure Validation Report ⓘ

May 21, 2020 – 07:12 pm BST

PDB ID : 5UWI
Title : Crystal Structure of HDAC5 NES Peptide in complex with CRM1-Ran-RanBP1
Authors : Fung, H.Y.J.; Chook, Y.M.
Deposited on : 2017-02-21
Resolution : 2.14 Å(reported)

This is a Full wwPDB X-ray Structure Validation Report for a publicly released PDB entry.

We welcome your comments at validation@mail.wwpdb.org

A user guide is available at

<https://www.wwpdb.org/validation/2017/XrayValidationReportHelp>

with specific help available everywhere you see the ⓘ symbol.

The following versions of software and data (see [references ⓘ](#)) were used in the production of this report:

MolProbity : 4.02b-467
Mogul : 1.8.5 (274361), CSD as541be (2020)
Xtriage (Phenix) : 1.13
EDS : 2.11
buster-report : 1.1.7 (2018)
Percentile statistics : 20191225.v01 (using entries in the PDB archive December 25th 2019)
Refmac : 5.8.0158
CCP4 : 7.0.044 (Gargrove)
Ideal geometry (proteins) : Engh & Huber (2001)
Ideal geometry (DNA, RNA) : Parkinson et al. (1996)
Validation Pipeline (wwPDB-VP) : 2.11

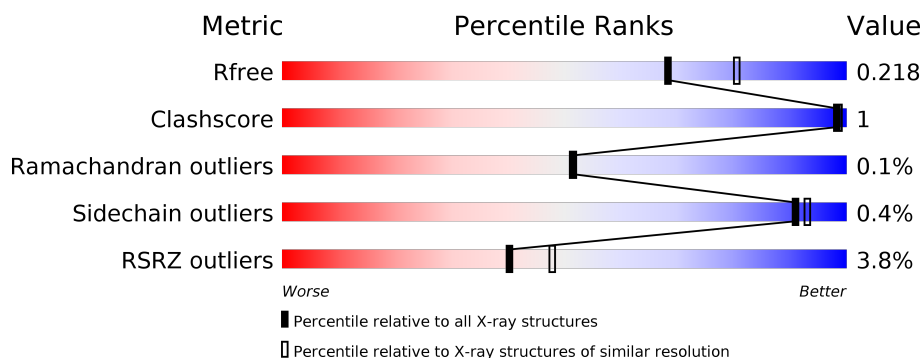
1 Overall quality at a glance ⓘ

The following experimental techniques were used to determine the structure:

X-RAY DIFFRACTION

The reported resolution of this entry is 2.14 Å.

Percentile scores (ranging between 0-100) for global validation metrics of the entry are shown in the following graphic. The table shows the number of entries on which the scores are based.



Metric	Whole archive (#Entries)	Similar resolution (#Entries, resolution range(Å))
R_{free}	130704	2523 (2.16-2.12)
Clashscore	141614	2653 (2.16-2.12)
Ramachandran outliers	138981	2618 (2.16-2.12)
Sidechain outliers	138945	2617 (2.16-2.12)
RSRZ outliers	127900	2485 (2.16-2.12)

The table below summarises the geometric issues observed across the polymeric chains and their fit to the electron density. The red, orange, yellow and green segments on the lower bar indicate the fraction of residues that contain outliers for ≥ 3 , 2, 1 and 0 types of geometric quality criteria respectively. A grey segment represents the fraction of residues that are not modelled. The numeric value for each fraction is indicated below the corresponding segment, with a dot representing fractions $\leq 5\%$. The upper red bar (where present) indicates the fraction of residues that have poor fit to the electron density. The numeric value is given above the bar.

Mol	Chain	Length	Quality of chain
1	A	237	<div> <div>5%</div> <div>87%</div> <div>12%</div> </div>
2	B	143	<div> <div>6%</div> <div>87%</div> <div>10%</div> </div>
3	C	1024	<div> <div>2%</div> <div>96%</div> <div>• •</div> </div>
4	D	18	<div> <div>44%</div> <div>89%</div> <div>11%</div> </div>

2 Entry composition [i](#)

There are 8 unique types of molecules in this entry. The entry contains 23038 atoms, of which 11201 are hydrogens and 0 are deuteriums.

In the tables below, the ZeroOcc column contains the number of atoms modelled with zero occupancy, the AltConf column contains the number of residues with at least one atom in alternate conformation and the Trace column contains the number of residues modelled with at most 2 atoms.

- Molecule 1 is a protein called GTP-binding nuclear protein Ran.

Mol	Chain	Residues	Atoms						ZeroOcc	AltConf	Trace
			Total	C	H	N	O	S			
1	A	208	3374	1087	1691	287	302	7	0	4	0

There are 21 discrepancies between the modelled and reference sequences:

Chain	Residue	Modelled	Actual	Comment	Reference
A	-20	MET	-	expression tag	UNP P62826
A	-19	GLU	-	expression tag	UNP P62826
A	-18	THR	-	expression tag	UNP P62826
A	-17	GLY	-	expression tag	UNP P62826
A	-16	SER	-	expression tag	UNP P62826
A	-15	SER	-	expression tag	UNP P62826
A	-14	HIS	-	expression tag	UNP P62826
A	-13	HIS	-	expression tag	UNP P62826
A	-12	HIS	-	expression tag	UNP P62826
A	-11	HIS	-	expression tag	UNP P62826
A	-10	HIS	-	expression tag	UNP P62826
A	-9	HIS	-	expression tag	UNP P62826
A	-8	SER	-	expression tag	UNP P62826
A	-7	SER	-	expression tag	UNP P62826
A	-6	GLY	-	expression tag	UNP P62826
A	-5	LEU	-	expression tag	UNP P62826
A	-4	PRO	-	expression tag	UNP P62826
A	-3	ARG	-	expression tag	UNP P62826
A	-2	GLY	-	expression tag	UNP P62826
A	-1	SER	-	expression tag	UNP P62826
A	0	HIS	-	expression tag	UNP P62826

- Molecule 2 is a protein called Ran-specific GTPase-activating protein 1.

Mol	Chain	Residues	Atoms						ZeroOcc	AltConf	Trace
2	B	129	Total	C	H	N	O	S	0	0	0
			2112	672	1054	184	197	5			

There are 3 discrepancies between the modelled and reference sequences:

Chain	Residue	Modelled	Actual	Comment	Reference
B	59	GLY	-	expression tag	UNP P41920
B	60	GLY	-	expression tag	UNP P41920
B	61	SER	-	expression tag	UNP P41920

- Molecule 3 is a protein called Exportin-1.

Mol	Chain	Residues	Atoms						ZeroOcc	AltConf	Trace
3	C	1001	Total	C	H	N	O	S	0	31	0
			16493	5257	8302	1352	1539	43			

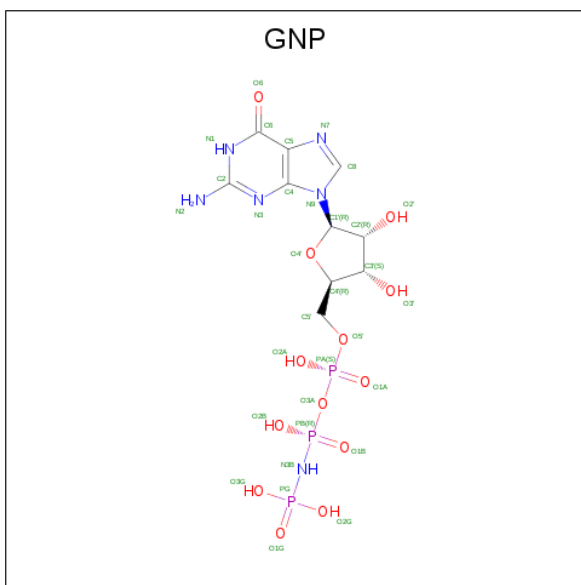
There are 9 discrepancies between the modelled and reference sequences:

Chain	Residue	Modelled	Actual	Comment	Reference
C	-2	GLY	-	expression tag	UNP P30822
C	-1	GLY	-	expression tag	UNP P30822
C	0	SER	-	expression tag	UNP P30822
C	441	ASP	VAL	conflict	UNP P30822
C	537	GLY	ASP	conflict	UNP P30822
C	539	CYS	THR	conflict	UNP P30822
C	540	GLU	VAL	conflict	UNP P30822
C	541	GLN	LYS	conflict	UNP P30822
C	1022	CYS	TYR	conflict	UNP P30822

- Molecule 4 is a protein called Histone deacetylase 5.

Mol	Chain	Residues	Atoms						ZeroOcc	AltConf	Trace
4	D	16	Total	C	H	N	O	S	0	0	0
			223	70	110	16	26	1			

- Molecule 5 is PHOSPHOAMINOPHOSPHONIC ACID-GUANYLATE ESTER (three-letter code: GNP) (formula: C₁₀H₁₇N₆O₁₃P₃).

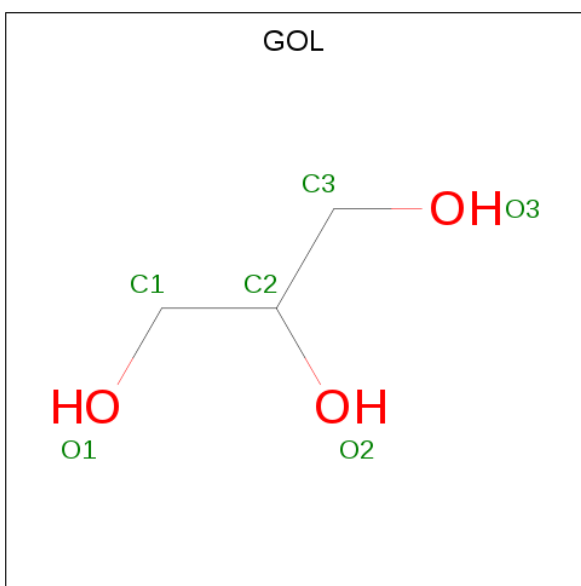


Mol	Chain	Residues	Atoms						ZeroOcc	AltConf
5	A	1	Total	C	H	N	O	P	0	0
			44	10	12	6	13	3		

- Molecule 6 is MAGNESIUM ION (three-letter code: MG) (formula: Mg).

Mol	Chain	Residues	Atoms	ZeroOcc	AltConf
6	A	1	Total Mg 1 1	0	0

- Molecule 7 is GLYCEROL (three-letter code: GOL) (formula: $\text{C}_3\text{H}_8\text{O}_3$).



Mol	Chain	Residues	Atoms	ZeroOcc	AltConf
7	A	1	Total C H O 14 3 8 3	0	0
7	C	1	Total C H O 14 3 8 3	0	0
7	C	1	Total C H O 14 3 8 3	0	0
7	C	1	Total C H O 14 3 8 3	0	0

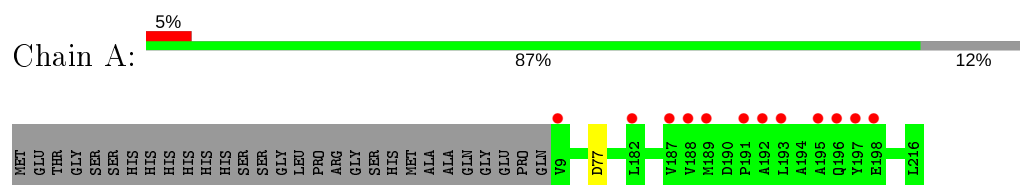
- Molecule 8 is water.

Mol	Chain	Residues	Atoms	ZeroOcc	AltConf
8	A	151	Total O 151 151	0	0
8	B	29	Total O 29 29	0	0
8	C	555	Total O 555 555	0	0

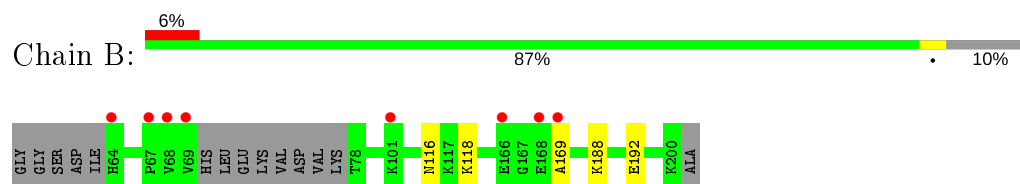
3 Residue-property plots [i](#)

These plots are drawn for all protein, RNA and DNA chains in the entry. The first graphic for a chain summarises the proportions of the various outlier classes displayed in the second graphic. The second graphic shows the sequence view annotated by issues in geometry and electron density. Residues are color-coded according to the number of geometric quality criteria for which they contain at least one outlier: green = 0, yellow = 1, orange = 2 and red = 3 or more. A red dot above a residue indicates a poor fit to the electron density ($RSRZ > 2$). Stretches of 2 or more consecutive residues without any outlier are shown as a green connector. Residues present in the sample, but not in the model, are shown in grey.

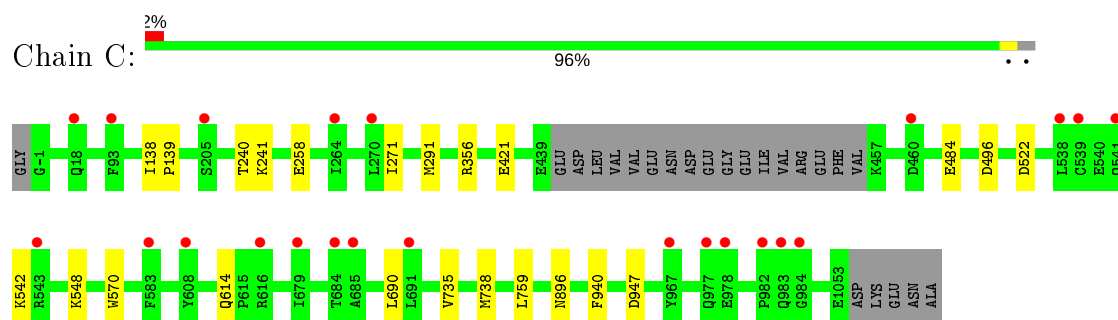
- Molecule 1: GTP-binding nuclear protein Ran



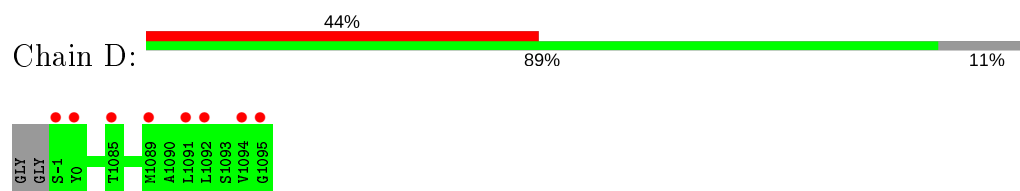
- Molecule 2: Ran-specific GTPase-activating protein 1



- Molecule 3: Exportin-1



- Molecule 4: Histone deacetylase 5



4 Data and refinement statistics

Property	Value	Source
Space group	P 43 21 2	Depositor
Cell constants a, b, c, α , β , γ	106.39Å 106.39Å 304.72Å 90.00° 90.00° 90.00°	Depositor
Resolution (Å)	40.29 – 2.14 47.12 – 2.14	Depositor EDS
% Data completeness (in resolution range)	98.1 (40.29-2.14) 98.1 (47.12-2.14)	Depositor EDS
R_{merge}	0.07	Depositor
R_{sym}	(Not available)	Depositor
$\langle I/\sigma(I) \rangle$ ¹	2.23 (at 2.14Å)	Xtriage
Refinement program	PHENIX (1.11.1 _2575: ???)	Depositor
R, R_{free}	0.183 , 0.218 0.183 , 0.218	Depositor DCC
R_{free} test set	2000 reflections (2.11%)	wwPDB-VP
Wilson B-factor (Å ²)	25.3	Xtriage
Anisotropy	0.058	Xtriage
Bulk solvent k_{sol} (e/Å ³), B_{sol} (Å ²)	0.38 , 45.5	EDS
L-test for twinning ²	$\langle L \rangle = 0.48$, $\langle L^2 \rangle = 0.32$	Xtriage
Estimated twinning fraction	No twinning to report.	Xtriage
F_o, F_c correlation	0.95	EDS
Total number of atoms	23038	wwPDB-VP
Average B, all atoms (Å ²)	41.0	wwPDB-VP

Xtriage's analysis on translational NCS is as follows: *The largest off-origin peak in the Patterson function is 3.69% of the height of the origin peak. No significant pseudotranslation is detected.*

¹Intensities estimated from amplitudes.

²Theoretical values of $\langle |L| \rangle$, $\langle L^2 \rangle$ for acentric reflections are 0.5, 0.333 respectively for untwinned datasets, and 0.375, 0.2 for perfectly twinned datasets.

5 Model quality [i](#)

5.1 Standard geometry [i](#)

Bond lengths and bond angles in the following residue types are not validated in this section: GOL, GNP, MG

The Z score for a bond length (or angle) is the number of standard deviations the observed value is removed from the expected value. A bond length (or angle) with $|Z| > 5$ is considered an outlier worth inspection. RMSZ is the root-mean-square of all Z scores of the bond lengths (or angles).

Mol	Chain	Bond lengths		Bond angles	
		RMSZ	$\# Z > 5$	RMSZ	$\# Z > 5$
1	A	0.25	0/1745	0.46	0/2365
2	B	0.24	0/1077	0.44	0/1439
3	C	0.24	0/8465	0.42	0/11465
4	D	0.30	0/113	0.43	0/151
All	All	0.25	0/11400	0.42	0/15420

There are no bond length outliers.

There are no bond angle outliers.

There are no chirality outliers.

There are no planarity outliers.

5.2 Too-close contacts [i](#)

In the following table, the Non-H and H(model) columns list the number of non-hydrogen atoms and hydrogen atoms in the chain respectively. The H(added) column lists the number of hydrogen atoms added and optimized by MolProbity. The Clashes column lists the number of clashes within the asymmetric unit, whereas Symm-Clashes lists symmetry related clashes.

Mol	Chain	Non-H	H(model)	H(added)	Clashes	Symm-Clashes
1	A	1683	1691	1667	1	0
2	B	1058	1054	1054	2	0
3	C	8191	8302	8169	11	0
4	D	113	110	112	0	0
5	A	32	12	12	0	0
6	A	1	0	0	0	0
7	A	6	8	8	0	0
7	C	18	24	24	0	0
8	A	151	0	0	1	0

Continued on next page...

Continued from previous page...

Mol	Chain	Non-H	H(model)	H(added)	Clashes	Symm-Clashes
8	B	29	0	0	0	0
8	C	555	0	0	3	0
All	All	11837	11201	11046	14	0

The all-atom clashscore is defined as the number of clashes found per 1000 atoms (including hydrogen atoms). The all-atom clashscore for this structure is 1.

All (14) close contacts within the same asymmetric unit are listed below, sorted by their clash magnitude.

Atom-1	Atom-2	Interatomic distance (Å)	Clash overlap (Å)
1:A:77:ASP:OD2	8:A:401:HOH:O	2.02	0.76
3:C:484:GLU:OE1	8:C:1202:HOH:O	2.13	0.66
3:C:896:ASN:ND2	3:C:947:ASP:O	2.37	0.56
2:B:188:LYS:NZ	2:B:192:GLU:OE1	2.39	0.55
3:C:542:LYS:O	3:C:548:LYS:NZ	2.43	0.48
3:C:570:TRP:CG	3:C:614:GLN:HG2	2.49	0.47
2:B:116:ASN:OD1	2:B:118:LYS:N	2.45	0.47
3:C:138:ILE:HB	3:C:139:PRO:HD3	1.98	0.45
3:C:258:GLU:OE1	8:C:1204:HOH:O	2.21	0.44
3:C:421:GLU:OE2	8:C:1203:HOH:O	2.21	0.43
3:C:690:LEU:HB2	3:C:738:MET:SD	2.58	0.42
3:C:496:ASP:OD1	3:C:496:ASP:C	2.57	0.42
3:C:240:THR:OG1	3:C:241:LYS:N	2.51	0.42
3:C:735[B]:VAL:HG13	3:C:759:LEU:HB3	2.04	0.40

There are no symmetry-related clashes.

5.3 Torsion angles [i](#)

5.3.1 Protein backbone [i](#)

In the following table, the Percentiles column shows the percent Ramachandran outliers of the chain as a percentile score with respect to all X-ray entries followed by that with respect to entries of similar resolution.

The Analysed column shows the number of residues for which the backbone conformation was analysed, and the total number of residues.

Mol	Chain	Analysed	Favoured	Allowed	Outliers	Percentiles
1	A	210/237 (89%)	204 (97%)	6 (3%)	0	100 100

Continued on next page...

Continued from previous page...

Mol	Chain	Analysed	Favoured	Allowed	Outliers	Percentiles	
2	B	125/143 (87%)	118 (94%)	6 (5%)	1 (1%)	19	11
3	C	1028/1024 (100%)	1009 (98%)	19 (2%)	0	100	100
4	D	14/18 (78%)	13 (93%)	1 (7%)	0	100	100
All	All	1377/1422 (97%)	1344 (98%)	32 (2%)	1 (0%)	51	51

All (1) Ramachandran outliers are listed below:

Mol	Chain	Res	Type
2	B	169	ALA

5.3.2 Protein sidechains ⓘ

In the following table, the Percentiles column shows the percent sidechain outliers of the chain as a percentile score with respect to all X-ray entries followed by that with respect to entries of similar resolution.

The Analysed column shows the number of residues for which the sidechain conformation was analysed, and the total number of residues.

Mol	Chain	Analysed	Rotameric	Outliers	Percentiles	
1	A	184/203 (91%)	184 (100%)	0	100	100
2	B	111/122 (91%)	111 (100%)	0	100	100
3	C	943/933 (101%)	938 (100%)	5 (0%)	88	91
4	D	12/12 (100%)	12 (100%)	0	100	100
All	All	1250/1270 (98%)	1245 (100%)	5 (0%)	91	93

All (5) residues with a non-rotameric sidechain are listed below:

Mol	Chain	Res	Type
3	C	271	ILE
3	C	291	MET
3	C	356	ARG
3	C	522	ASP
3	C	940	PHE

Some sidechains can be flipped to improve hydrogen bonding and reduce clashes. There are no such sidechains identified.

5.3.3 RNA ⓘ

There are no RNA molecules in this entry.

5.4 Non-standard residues in protein, DNA, RNA chains ⓘ

There are no non-standard protein/DNA/RNA residues in this entry.

5.5 Carbohydrates ⓘ

There are no carbohydrates in this entry.

5.6 Ligand geometry ⓘ

Of 6 ligands modelled in this entry, 1 is monoatomic - leaving 5 for Mogul analysis.

In the following table, the Counts columns list the number of bonds (or angles) for which Mogul statistics could be retrieved, the number of bonds (or angles) that are observed in the model and the number of bonds (or angles) that are defined in the Chemical Component Dictionary. The Link column lists molecule types, if any, to which the group is linked. The Z score for a bond length (or angle) is the number of standard deviations the observed value is removed from the expected value. A bond length (or angle) with $|Z| > 2$ is considered an outlier worth inspection. RMSZ is the root-mean-square of all Z scores of the bond lengths (or angles).

Mol	Type	Chain	Res	Link	Bond lengths			Bond angles		
					Counts	RMSZ	# Z > 2	Counts	RMSZ	# Z > 2
7	GOL	C	1101	-	5,5,5	0.39	0	5,5,5	0.17	0
7	GOL	C	1102	-	5,5,5	0.38	0	5,5,5	0.18	0
7	GOL	A	303	-	5,5,5	0.35	0	5,5,5	0.25	0
5	GNP	A	301	6	28,34,34	4.31	19 (67%)	30,54,54	1.32	4 (13%)
7	GOL	C	1103	-	5,5,5	0.36	0	5,5,5	0.22	0

In the following table, the Chirals column lists the number of chiral outliers, the number of chiral centers analysed, the number of these observed in the model and the number defined in the Chemical Component Dictionary. Similar counts are reported in the Torsion and Rings columns. '-' means no outliers of that kind were identified.

Mol	Type	Chain	Res	Link	Chirals	Torsions	Rings
7	GOL	C	1101	-	-	2/4/4/4	-
7	GOL	C	1102	-	-	3/4/4/4	-
7	GOL	A	303	-	-	2/4/4/4	-
5	GNP	A	301	6	-	4/17/38/38	0/3/3/3

Continued on next page...

Continued from previous page...

Mol	Type	Chain	Res	Link	Chirals	Torsions	Rings
7	GOL	C	1103	-	-	2/4/4/4	-

All (19) bond length outliers are listed below:

Mol	Chain	Res	Type	Atoms	Z	Observed(Å)	Ideal(Å)
5	A	301	GNP	C4-N9	-10.53	1.33	1.47
5	A	301	GNP	C5-C6	-8.75	1.37	1.52
5	A	301	GNP	O4'-C1'	8.30	1.61	1.42
5	A	301	GNP	C2'-C1'	-6.69	1.32	1.53
5	A	301	GNP	PB-O3A	6.21	1.66	1.59
5	A	301	GNP	PG-O1G	5.57	1.55	1.46
5	A	301	GNP	PB-O1B	5.56	1.55	1.46
5	A	301	GNP	O4'-C4'	-5.39	1.33	1.45
5	A	301	GNP	O2'-C2'	4.13	1.52	1.43
5	A	301	GNP	C2-N2	3.58	1.54	1.36
5	A	301	GNP	C5-C4	-3.06	1.34	1.53
5	A	301	GNP	O3'-C3'	-2.92	1.36	1.43
5	A	301	GNP	C8-N9	-2.60	1.36	1.45
5	A	301	GNP	PB-N3B	2.58	1.70	1.63
5	A	301	GNP	O6-C6	-2.36	1.18	1.23
5	A	301	GNP	PG-N3B	2.16	1.69	1.63
5	A	301	GNP	PA-O5'	2.14	1.68	1.59
5	A	301	GNP	C2-N1	-2.07	1.35	1.44
5	A	301	GNP	PB-O2B	-2.05	1.51	1.56

All (4) bond angle outliers are listed below:

Mol	Chain	Res	Type	Atoms	Z	Observed(°)	Ideal(°)
5	A	301	GNP	C4-C5-N7	4.25	108.09	102.46
5	A	301	GNP	PA-O3A-PB	-2.40	124.15	132.62
5	A	301	GNP	O6-C6-N1	-2.18	119.77	122.69
5	A	301	GNP	O1G-PG-N3B	-2.08	108.71	111.77

There are no chirality outliers.

All (13) torsion outliers are listed below:

Mol	Chain	Res	Type	Atoms
5	A	301	GNP	PG-N3B-PB-O1B
5	A	301	GNP	C5'-O5'-PA-O1A
5	A	301	GNP	C2'-C1'-N9-C4
7	C	1103	GOL	O1-C1-C2-C3

Continued on next page...

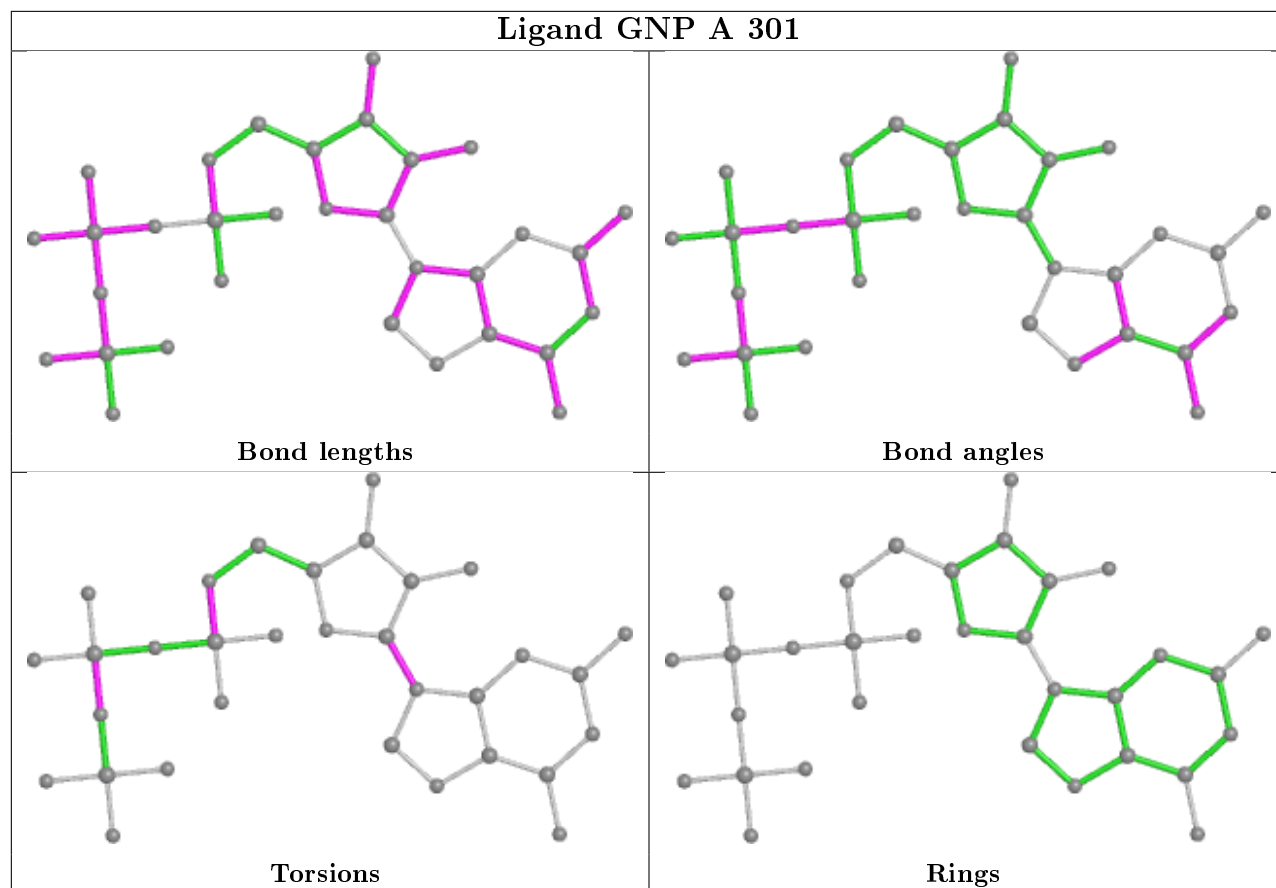
Continued from previous page...

Mol	Chain	Res	Type	Atoms
7	A	303	GOL	O1-C1-C2-O2
7	A	303	GOL	O1-C1-C2-C3
7	C	1101	GOL	C1-C2-C3-O3
7	C	1102	GOL	O1-C1-C2-C3
7	C	1101	GOL	O2-C2-C3-O3
7	C	1103	GOL	O1-C1-C2-O2
7	C	1102	GOL	O1-C1-C2-O2
5	A	301	GNP	PG-N3B-PB-O3A
7	C	1102	GOL	C1-C2-C3-O3

There are no ring outliers.

No monomer is involved in short contacts.

The following is a two-dimensional graphical depiction of Mogul quality analysis of bond lengths, bond angles, torsion angles, and ring geometry for all instances of the Ligand of Interest. In addition, ligands with molecular weight > 250 and outliers as shown on the validation Tables will also be included. For torsion angles, if less than 5% of the Mogul distribution of torsion angles is within 10 degrees of the torsion angle in question, then that torsion angle is considered an outlier. Any bond that is central to one or more torsion angles identified as an outlier by Mogul will be highlighted in the graph. For rings, the root-mean-square deviation (RMSD) between the ring in question and similar rings identified by Mogul is calculated over all ring torsion angles. If the average RMSD is greater than 60 degrees and the minimal RMSD between the ring in question and any Mogul-identified rings is also greater than 60 degrees, then that ring is considered an outlier. The outliers are highlighted in purple. The color gray indicates Mogul did not find sufficient equivalents in the CSD to analyse the geometry.



5.7 Other polymers [i](#)

There are no such residues in this entry.

5.8 Polymer linkage issues [i](#)

There are no chain breaks in this entry.

6 Fit of model and data

6.1 Protein, DNA and RNA chains

In the following table, the column labelled ‘#RSRZ> 2’ contains the number (and percentage) of RSRZ outliers, followed by percent RSRZ outliers for the chain as percentile scores relative to all X-ray entries and entries of similar resolution. The OWAB column contains the minimum, median, 95th percentile and maximum values of the occupancy-weighted average B-factor per residue. The column labelled ‘Q< 0.9’ lists the number of (and percentage) of residues with an average occupancy less than 0.9.

Mol	Chain	Analysed	<RSRZ>	#RSRZ>2	OWAB(Å ²)	Q<0.9
1	A	208/237 (87%)	0.14	12 (5%) 23 29	12, 29, 75, 119	0
2	B	129/143 (90%)	0.33	8 (6%) 20 25	33, 47, 81, 101	0
3	C	1001/1024 (97%)	-0.01	23 (2%) 60 67	12, 33, 67, 105	0
4	D	16/18 (88%)	2.22	8 (50%) 0 0	55, 65, 103, 115	0
All	All	1354/1422 (95%)	0.07	51 (3%) 40 48	12, 34, 74, 119	0

All (51) RSRZ outliers are listed below:

Mol	Chain	Res	Type	RSRZ
4	D	1095	GLY	5.9
4	D	0	TYR	5.9
1	A	189	MET	5.9
1	A	195	ALA	5.1
3	C	543	ARG	4.6
1	A	188	VAL	4.6
2	B	69	VAL	4.4
1	A	192	ALA	4.3
2	B	67	PRO	4.2
3	C	264	ILE	3.7
3	C	977	GLN	3.6
1	A	191	PRO	3.6
1	A	187	VAL	3.6
1	A	197	TYR	3.6
1	A	182	LEU	3.4
1	A	193	LEU	3.4
4	D	-1	SER	3.4
4	D	1094	VAL	3.3
3	C	978	GLU	3.2
3	C	691	LEU	3.2
4	D	1091	LEU	3.2

Continued on next page...

Continued from previous page...

Mol	Chain	Res	Type	RSRZ
1	A	9	VAL	3.1
2	B	169	ALA	3.0
4	D	1085	THR	3.0
3	C	967	TYR	2.9
2	B	68	VAL	2.8
3	C	679	ILE	2.7
3	C	983	GLN	2.7
3	C	685	ALA	2.7
3	C	684	THR	2.7
2	B	64	HIS	2.6
2	B	168	GLU	2.6
3	C	205	SER	2.6
3	C	538	LEU	2.5
3	C	270	LEU	2.5
3	C	616	ARG	2.5
3	C	984	GLY	2.4
1	A	196	GLN	2.2
3	C	18	GLN	2.2
3	C	539	CYS	2.2
3	C	541	GLN	2.2
3	C	93	PHE	2.2
3	C	583	PHE	2.2
4	D	1089	MET	2.2
1	A	198	GLU	2.1
3	C	460	ASP	2.1
2	B	166	GLU	2.1
2	B	101	LYS	2.1
3	C	608	TYR	2.1
3	C	982	PRO	2.0
4	D	1092	LEU	2.0

6.2 Non-standard residues in protein, DNA, RNA chains ⓘ

There are no non-standard protein/DNA/RNA residues in this entry.

6.3 Carbohydrates ⓘ

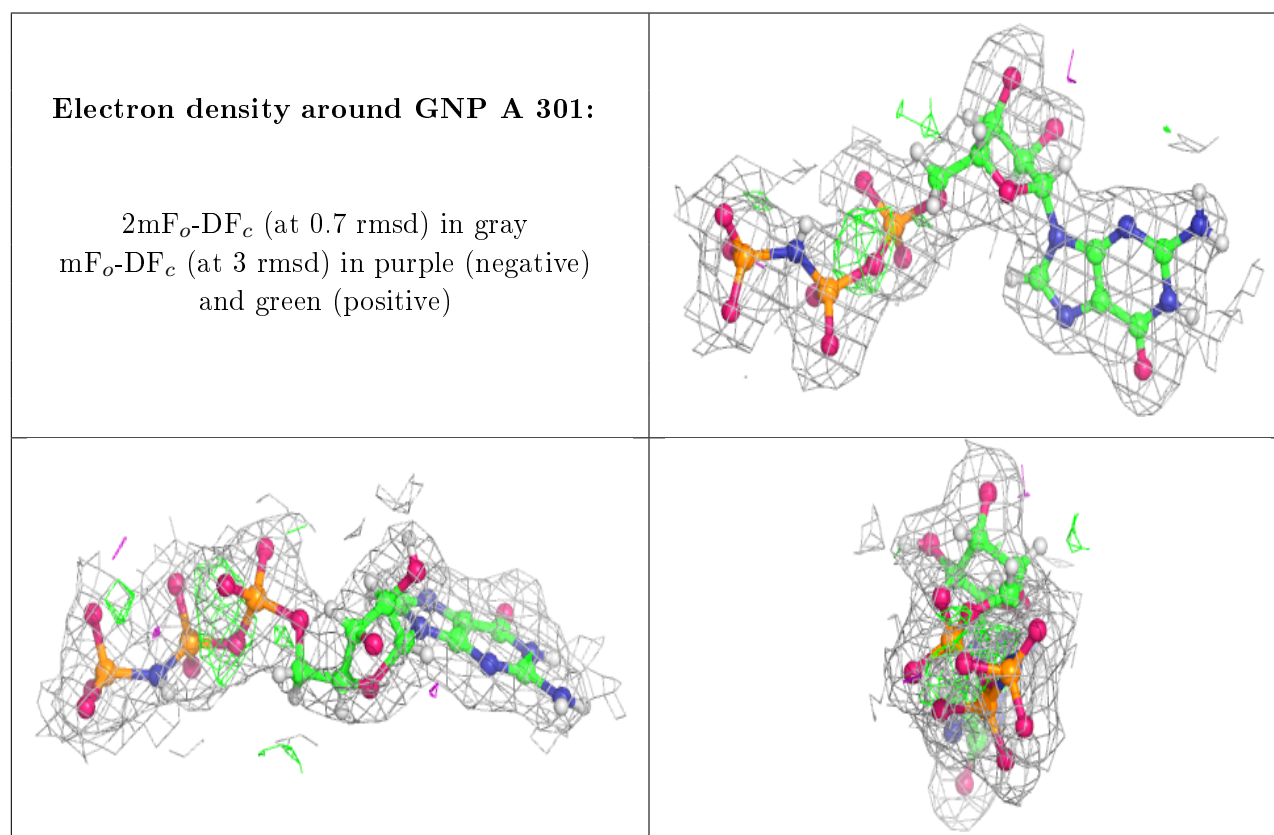
There are no carbohydrates in this entry.

6.4 Ligands [i](#)

In the following table, the Atoms column lists the number of modelled atoms in the group and the number defined in the chemical component dictionary. The B-factors column lists the minimum, median, 95th percentile and maximum values of B factors of atoms in the group. The column labelled 'Q<0.9' lists the number of atoms with occupancy less than 0.9.

Mol	Type	Chain	Res	Atoms	RSCC	RSR	B-factors(\AA^2)	Q<0.9
7	GOL	C	1102	6/6	0.66	0.32	77,93,102,103	0
7	GOL	C	1101	6/6	0.70	0.29	61,73,78,79	0
7	GOL	A	303	6/6	0.81	0.19	53,63,68,70	0
7	GOL	C	1103	6/6	0.84	0.24	43,55,65,68	0
5	GNP	A	301	32/32	0.97	0.12	20,23,29,31	0
6	MG	A	302	1/1	0.99	0.05	12,12,12,12	0

The following is a graphical depiction of the model fit to experimental electron density of all instances of the Ligand of Interest. In addition, ligands with molecular weight > 250 and outliers as shown on the geometry validation Tables will also be included. Each fit is shown from different orientation to approximate a three-dimensional view.



6.5 Other polymers [i](#)

There are no such residues in this entry.