



Full wwPDB X-ray Structure Validation Report ⓘ

May 22, 2020 – 05:58 am BST

PDB ID : 4UX3
Title : cohesin Smc3-HD:Scc1-N complex from yeast
Authors : Gligoris, T.G.; Nasmyth, K.; Lowe, J.
Deposited on : 2014-08-18
Resolution : 3.30 Å(reported)

This is a Full wwPDB X-ray Structure Validation Report for a publicly released PDB entry.

We welcome your comments at validation@mail.wwpdb.org

A user guide is available at

<https://www.wwpdb.org/validation/2017/XrayValidationReportHelp>

with specific help available everywhere you see the ⓘ symbol.

The following versions of software and data (see [references ⓘ](#)) were used in the production of this report:

MolProbity : 4.02b-467
Mogul : 1.8.5 (274361), CSD as541be (2020)
Xtriage (Phenix) : 1.13
EDS : 2.11
buster-report : 1.1.7 (2018)
Percentile statistics : 20191225.v01 (using entries in the PDB archive December 25th 2019)
Refmac : 5.8.0158
CCP4 : 7.0.044 (Gargrove)
Ideal geometry (proteins) : Engh & Huber (2001)
Ideal geometry (DNA, RNA) : Parkinson et al. (1996)
Validation Pipeline (wwPDB-VP) : 2.11

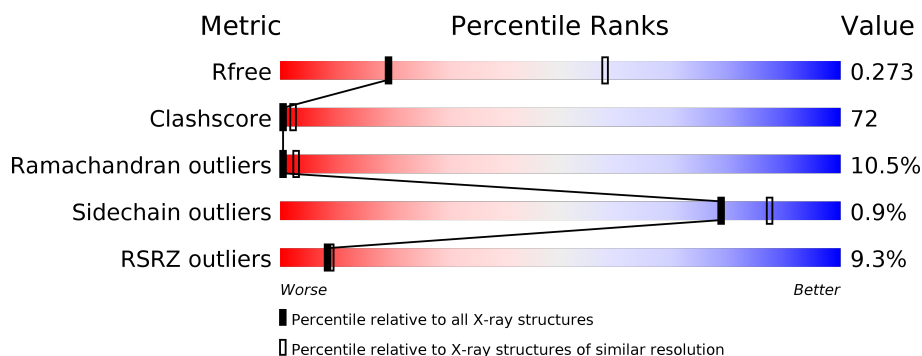
1 Overall quality at a glance

The following experimental techniques were used to determine the structure:

X-RAY DIFFRACTION

The reported resolution of this entry is 3.30 Å.

Percentile scores (ranging between 0-100) for global validation metrics of the entry are shown in the following graphic. The table shows the number of entries on which the scores are based.



Metric	Whole archive (#Entries)	Similar resolution (#Entries, resolution range(Å))
R_{free}	130704	1149 (3.34-3.26)
Clashscore	141614	1205 (3.34-3.26)
Ramachandran outliers	138981	1183 (3.34-3.26)
Sidechain outliers	138945	1182 (3.34-3.26)
RSRZ outliers	127900	1115 (3.34-3.26)

The table below summarises the geometric issues observed across the polymeric chains and their fit to the electron density. The red, orange, yellow and green segments on the lower bar indicate the fraction of residues that contain outliers for ≥ 3 , 2, 1 and 0 types of geometric quality criteria respectively. A grey segment represents the fraction of residues that are not modelled. The numeric value for each fraction is indicated below the corresponding segment, with a dot representing fractions $\leq 5\%$. The upper red bar (where present) indicates the fraction of residues that have poor fit to the electron density. The numeric value is given above the bar.

Mol	Chain	Length	Quality of chain
1	A	543	<div> <div>7%</div> <div>23%</div> <div>49%</div> <div>8%</div> <div>20%</div> </div>
2	B	121	<div> <div>7%</div> <div>15%</div> <div>36%</div> <div>7%</div> <div>41%</div> </div>

The following table lists non-polymeric compounds, carbohydrate monomers and non-standard residues in protein, DNA, RNA chains that are outliers for geometric or electron-density-fit criteria:

Mol	Type	Chain	Res	Chirality	Geometry	Clashes	Electron density
4	AGS	A	9999	-	-	X	-

2 Entry composition

There are 4 unique types of molecules in this entry. The entry contains 4098 atoms, of which 0 are hydrogens and 0 are deuteriums.

In the tables below, the ZeroOcc column contains the number of atoms modelled with zero occupancy, the AltConf column contains the number of residues with at least one atom in alternate conformation and the Trace column contains the number of residues modelled with at most 2 atoms.

- Molecule 1 is a protein called STRUCTURAL MAINTENANCE OF CHROMOSOMES PROTEIN 3.

Mol	Chain	Residues	Atoms					ZeroOcc	AltConf	Trace
1	A	436	Total	C	N	O	S	0	0	0
			3521	2211	620	678	12			

There are 22 discrepancies between the modelled and reference sequences:

Chain	Residue	Modelled	Actual	Comment	Reference
A	0	MET	-	expression tag	UNP P47037
A	1	ALA	-	expression tag	UNP P47037
A	262	SER	-	linker	UNP P47037
A	263	SER	-	linker	UNP P47037
A	264	LYS	-	linker	UNP P47037
A	265	HIS	-	linker	UNP P47037
A	266	PRO	-	linker	UNP P47037
A	267	THR	-	linker	UNP P47037
A	268	SER	-	linker	UNP P47037
A	269	LEU	-	linker	UNP P47037
A	270	VAL	-	linker	UNP P47037
A	271	PRO	-	linker	UNP P47037
A	272	ARG	-	linker	UNP P47037
A	273	GLY	-	linker	UNP P47037
A	1231	TRP	-	expression tag	UNP P47037
A	1232	SER	-	expression tag	UNP P47037
A	1233	HIS	-	expression tag	UNP P47037
A	1234	PRO	-	expression tag	UNP P47037
A	1235	GLN	-	expression tag	UNP P47037
A	1236	PHE	-	expression tag	UNP P47037
A	1237	GLU	-	expression tag	UNP P47037
A	1238	LYS	-	expression tag	UNP P47037

- Molecule 2 is a protein called MITOTIC CHROMOSOME DETERMINANT-RELATED PROTEIN.

Mol	Chain	Residues	Atoms					ZeroOcc	AltConf	Trace
2	B	71	Total	C	N	O	S	0	0	0
			545	339	90	113	3			

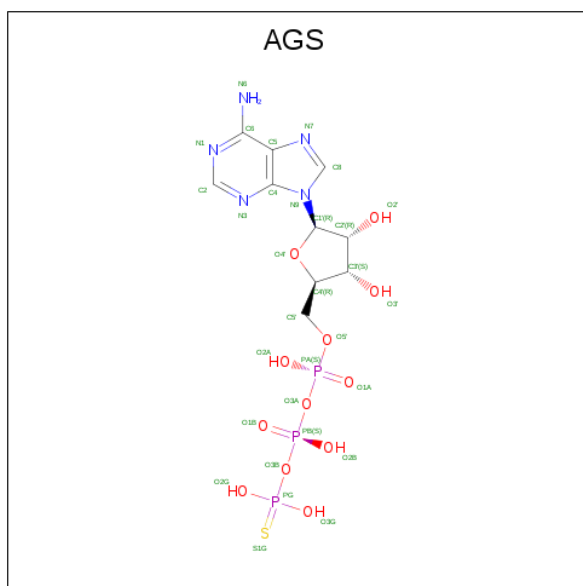
There are 6 discrepancies between the modelled and reference sequences:

Chain	Residue	Modelled	Actual	Comment	Reference
B	116	HIS	-	expression tag	UNP A6ZXW3
B	117	HIS	-	expression tag	UNP A6ZXW3
B	118	HIS	-	expression tag	UNP A6ZXW3
B	119	HIS	-	expression tag	UNP A6ZXW3
B	120	HIS	-	expression tag	UNP A6ZXW3
B	121	HIS	-	expression tag	UNP A6ZXW3

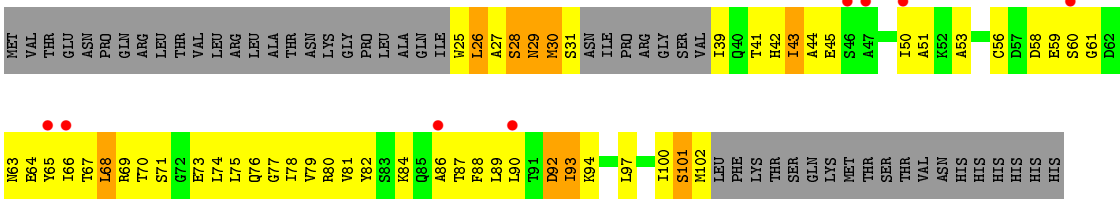
- Molecule 3 is MAGNESIUM ION (three-letter code: MG) (formula: Mg).

Mol	Chain	Residues	Atoms		ZeroOcc	AltConf
3	A	1	Total	Mg	0	0
			1	1		

- Molecule 4 is PHOSPHOTHIOPHOSPHORIC ACID-ADENYLATE ESTER (three-letter code: AGS) (formula: C₁₀H₁₆N₅O₁₂P₃S).



Mol	Chain	Residues	Atoms						ZeroOcc	AltConf
4	A	1	Total	C	N	O	P	S	0	0
			31	10	5	12	3	1		



4 Data and refinement statistics

Property	Value	Source
Space group	I 2 2 2	Depositor
Cell constants a, b, c, α , β , γ	73.15Å 94.80Å 284.77Å 90.00° 90.00° 90.00°	Depositor
Resolution (Å)	30.00 – 3.30 48.82 – 3.00	Depositor EDS
% Data completeness (in resolution range)	99.8 (30.00-3.30) 82.2 (48.82-3.00)	Depositor EDS
R_{merge}	0.11	Depositor
R_{sym}	(Not available)	Depositor
$\langle I/\sigma(I) \rangle$ ¹	1.13 (at 3.01Å)	Xtriage
Refinement program	REFMAC 5.8.0073	Depositor
R, R_{free}	0.274 , 0.329 0.286 , 0.273	Depositor DCC
R_{free} test set	928 reflections (4.90%)	wwPDB-VP
Wilson B-factor (Å ²)	123.9	Xtriage
Anisotropy	0.508	Xtriage
Bulk solvent k_{sol} (e/Å ³), B_{sol} (Å ²)	0.29 , 142.7	EDS
L-test for twinning ²	$\langle L \rangle = 0.48$, $\langle L^2 \rangle = 0.31$	Xtriage
Estimated twinning fraction	No twinning to report.	Xtriage
F_o, F_c correlation	0.90	EDS
Total number of atoms	4098	wwPDB-VP
Average B, all atoms (Å ²)	182.0	wwPDB-VP

Xtriage's analysis on translational NCS is as follows: *The largest off-origin peak in the Patterson function is 5.80% of the height of the origin peak. No significant pseudotranslation is detected.*

¹Intensities estimated from amplitudes.

²Theoretical values of $\langle |L| \rangle$, $\langle L^2 \rangle$ for acentric reflections are 0.5, 0.333 respectively for untwinned datasets, and 0.375, 0.2 for perfectly twinned datasets.

5 Model quality

5.1 Standard geometry

Bond lengths and bond angles in the following residue types are not validated in this section: MG, AGS

The Z score for a bond length (or angle) is the number of standard deviations the observed value is removed from the expected value. A bond length (or angle) with $|Z| > 5$ is considered an outlier worth inspection. RMSZ is the root-mean-square of all Z scores of the bond lengths (or angles).

Mol	Chain	Bond lengths		Bond angles	
		RMSZ	$\# Z > 5$	RMSZ	$\# Z > 5$
1	A	0.57	3/3559 (0.1%)	0.88	5/4765 (0.1%)
2	B	0.53	0/549	0.81	1/738 (0.1%)
All	All	0.56	3/4108 (0.1%)	0.87	6/5503 (0.1%)

Chiral center outliers are detected by calculating the chiral volume of a chiral center and verifying if the center is modelled as a planar moiety or with the opposite hand. A planarity outlier is detected by checking planarity of atoms in a peptide group, atoms in a mainchain group or atoms of a sidechain that are expected to be planar.

Mol	Chain	#Chirality outliers	#Planarity outliers
1	A	0	7
2	B	0	1
All	All	0	8

All (3) bond length outliers are listed below:

Mol	Chain	Res	Type	Atoms	Z	Observed(Å)	Ideal(Å)
1	A	147	PRO	CA-C	8.27	1.69	1.52
1	A	121	ARG	CG-CD	8.04	1.72	1.51
1	A	121	ARG	NE-CZ	-7.12	1.23	1.33

All (6) bond angle outliers are listed below:

Mol	Chain	Res	Type	Atoms	Z	Observed(°)	Ideal(°)
1	A	121	ARG	NE-CZ-NH2	-16.99	111.80	120.30
1	A	121	ARG	NE-CZ-NH1	8.43	124.52	120.30
1	A	150	LYS	N-CA-C	-7.87	89.76	111.00
1	A	151	ILE	CB-CA-C	5.92	123.44	111.60
1	A	154	LEU	CB-CG-CD2	-5.67	101.36	111.00
2	B	29	ASN	N-CA-C	5.28	125.26	111.00

There are no chirality outliers.

All (8) planarity outliers are listed below:

Mol	Chain	Res	Type	Group
1	A	1120	GLN	Peptide
1	A	121	ARG	Sidechain
1	A	138	SER	Peptide
1	A	146	VAL	Peptide
1	A	148	GLN	Peptide
1	A	151	ILE	Peptide
1	A	2	TYR	Peptide
2	B	28	SER	Peptide

5.2 Too-close contacts

In the following table, the Non-H and H(model) columns list the number of non-hydrogen atoms and hydrogen atoms in the chain respectively. The H(added) column lists the number of hydrogen atoms added and optimized by MolProbity. The Clashes column lists the number of clashes within the asymmetric unit, whereas Symm-Clashes lists symmetry related clashes.

Mol	Chain	Non-H	H(model)	H(added)	Clashes	Symm-Clashes
1	A	3521	0	3581	507	1
2	B	545	0	545	102	0
3	A	1	0	0	0	0
4	A	31	0	12	13	0
All	All	4098	0	4138	596	1

The all-atom clashscore is defined as the number of clashes found per 1000 atoms (including hydrogen atoms). The all-atom clashscore for this structure is 72.

All (596) close contacts within the same asymmetric unit are listed below, sorted by their clash magnitude.

Atom-1	Atom-2	Interatomic distance (Å)	Clash overlap (Å)
2:B:65:TYR:CZ	2:B:66:ILE:HG12	1.31	1.60
1:A:22:ASN:HB2	1:A:23:PHE:CG	1.47	1.50
1:A:22:ASN:HB2	1:A:23:PHE:CD1	1.64	1.30
1:A:116:TYR:CE2	1:A:125:LYS:HG2	1.67	1.30
2:B:65:TYR:CE2	2:B:66:ILE:HG12	1.69	1.25
1:A:1197:PHE:HB3	1:A:1216:GLU:OE1	1.35	1.24
2:B:65:TYR:CZ	2:B:66:ILE:CG1	2.20	1.24
2:B:84:LYS:HE2	2:B:88:PHE:CZ	1.75	1.21
1:A:1196:LYS:O	1:A:1197:PHE:CD1	1.96	1.19

Continued on next page...

Continued from previous page...

Atom-1	Atom-2	Interatomic distance (Å)	Clash overlap (Å)
1:A:150:LYS:O	1:A:154:LEU:HD13	1.03	1.18
1:A:152:VAL:O	1:A:154:LEU:N	1.76	1.18
1:A:1194:ALA:HB3	1:A:1197:PHE:CE1	1.81	1.14
1:A:150:LYS:O	1:A:154:LEU:CD1	1.97	1.13
2:B:75:LEU:O	2:B:78:ILE:HG22	1.49	1.13
1:A:975:ASP:OD1	1:A:976:GLN:OE1	1.62	1.12
1:A:31:ILE:HG21	1:A:1220:PHE:CZ	1.86	1.10
1:A:22:ASN:CB	1:A:23:PHE:CD1	2.34	1.10
1:A:1194:ALA:HB3	1:A:1197:PHE:HE1	1.15	1.09
1:A:116:TYR:HB3	1:A:118:LEU:HG	1.09	1.09
1:A:57:LYS:HA	1:A:61:ARG:NH1	1.67	1.09
1:A:145:ILE:HG12	1:A:146:VAL:H	1.10	1.09
1:A:1194:ALA:CB	1:A:1197:PHE:HE1	1.64	1.09
2:B:41:THR:HG22	2:B:42:HIS:H	1.11	1.08
1:A:23:PHE:HB3	1:A:1196:LYS:HE2	1.23	1.08
1:A:24:SER:HB3	1:A:25:PRO:HD2	1.14	1.07
1:A:28:ASN:OD1	1:A:1196:LYS:HD2	1.56	1.06
1:A:1212:VAL:HG13	1:A:1216:GLU:HB2	1.09	1.05
1:A:135:ALA:CB	1:A:136:GLY:HA2	1.87	1.05
1:A:186:MET:HE1	1:A:1026:ILE:HG21	1.35	1.05
1:A:1056:PHE:CZ	1:A:1113:PHE:CE1	2.44	1.04
1:A:147:PRO:CB	1:A:148:GLN:HA	1.83	1.04
1:A:148:GLN:HG3	1:A:150:LYS:HB2	1.06	1.04
1:A:20:ILE:HG21	1:A:1209:VAL:O	1.56	1.04
1:A:31:ILE:HG21	1:A:1220:PHE:HZ	0.94	1.04
1:A:135:ALA:HB3	1:A:136:GLY:HA2	1.08	1.04
2:B:65:TYR:CE2	2:B:66:ILE:CG1	2.38	1.04
1:A:1212:VAL:HG21	1:A:1215:GLU:HG3	1.39	1.03
1:A:22:ASN:CB	1:A:23:PHE:CG	2.43	1.02
1:A:116:TYR:HE2	1:A:125:LYS:HG2	0.87	1.01
1:A:147:PRO:HB2	1:A:148:GLN:CA	1.91	1.00
1:A:1056:PHE:CZ	1:A:1113:PHE:HE1	1.78	1.00
1:A:111:LEU:HD12	1:A:111:LEU:O	1.61	1.00
1:A:148:GLN:HG3	1:A:150:LYS:CB	1.90	0.99
1:A:116:TYR:HE2	1:A:125:LYS:CG	1.75	0.99
1:A:148:GLN:CG	1:A:150:LYS:HB2	1.92	0.98
1:A:145:ILE:HG12	1:A:146:VAL:N	1.78	0.98
1:A:973:THR:O	1:A:977:LEU:HD13	1.61	0.98
1:A:116:TYR:CD1	1:A:118:LEU:HD21	2.00	0.96
1:A:1186:PHE:HE2	1:A:1187:ARG:NH1	1.63	0.96
1:A:1212:VAL:HG13	1:A:1216:GLU:CB	1.94	0.96

Continued on next page...

Continued from previous page...

Atom-1	Atom-2	Interatomic distance (Å)	Clash overlap (Å)
1:A:995:ASN:OD1	1:A:995:ASN:O	1.84	0.95
1:A:147:PRO:HB2	1:A:148:GLN:HA	0.96	0.95
1:A:57:LYS:HA	1:A:61:ARG:HH12	1.26	0.95
1:A:116:TYR:CB	1:A:118:LEU:HG	1.95	0.94
1:A:23:PHE:HB3	1:A:1196:LYS:CE	1.97	0.93
1:A:152:VAL:HG12	1:A:153:ALA:N	1.82	0.93
2:B:41:THR:HG22	2:B:42:HIS:N	1.80	0.93
1:A:23:PHE:HZ	1:A:1211:GLU:OE1	1.51	0.92
1:A:24:SER:HB3	1:A:25:PRO:CD	1.99	0.92
1:A:1186:PHE:CE2	1:A:1187:ARG:NH1	2.36	0.92
1:A:172:ALA:O	1:A:175:PHE:HB3	1.69	0.92
1:A:1199:ARG:NH2	1:A:1219:GLY:HA3	1.85	0.92
2:B:65:TYR:CG	2:B:66:ILE:N	2.32	0.91
2:B:65:TYR:CE1	2:B:66:ILE:HG12	2.05	0.91
2:B:65:TYR:OH	2:B:66:ILE:HD11	1.71	0.91
1:A:152:VAL:HG12	1:A:153:ALA:H	1.35	0.91
2:B:41:THR:CG2	2:B:42:HIS:H	1.83	0.91
1:A:1127:SER:HB3	1:A:1130:GLN:HB2	1.51	0.90
2:B:25:TRP:O	2:B:27:ALA:N	2.04	0.90
2:B:84:LYS:HE2	2:B:88:PHE:CE2	2.06	0.90
1:A:116:TYR:HB3	1:A:118:LEU:CG	2.00	0.90
1:A:1120:GLN:HG2	1:A:1121:LEU:N	1.86	0.89
2:B:65:TYR:CD2	2:B:66:ILE:N	2.40	0.89
1:A:23:PHE:CZ	1:A:1211:GLU:OE1	2.25	0.88
1:A:1161:ASP:CG	1:A:1162:LYS:H	1.75	0.88
1:A:41:PHE:O	1:A:44:ALA:HB3	1.73	0.88
1:A:145:ILE:CG1	1:A:146:VAL:H	1.87	0.87
2:B:97:LEU:O	2:B:100:ILE:HG13	1.74	0.87
1:A:80:ILE:O	1:A:105:ILE:N	2.07	0.86
1:A:132:LEU:HD12	1:A:139:MET:HE3	1.58	0.85
2:B:84:LYS:HE2	2:B:88:PHE:HZ	1.37	0.85
2:B:65:TYR:OH	2:B:66:ILE:CD1	2.25	0.85
1:A:1199:ARG:HH22	1:A:1219:GLY:HA3	1.42	0.85
1:A:31:ILE:CG2	1:A:1220:PHE:HZ	1.85	0.85
1:A:214:ARG:HB2	1:A:999:PHE:CE1	2.12	0.84
1:A:1212:VAL:CG2	1:A:1215:GLU:HG3	2.06	0.84
1:A:55:ASN:O	1:A:61:ARG:NH2	2.11	0.84
4:A:9999:AGS:O2B	4:A:9999:AGS:O3G	1.96	0.84
1:A:23:PHE:CD2	1:A:1198:PHE:HZ	1.95	0.84
1:A:1056:PHE:HZ	1:A:1113:PHE:CE1	1.96	0.83
1:A:116:TYR:CE2	1:A:125:LYS:CG	2.56	0.83

Continued on next page...

Continued from previous page...

Atom-1	Atom-2	Interatomic distance (Å)	Clash overlap (Å)
1:A:174:SER:O	1:A:177:VAL:HG12	1.79	0.82
1:A:207:LEU:HD21	1:A:1005:PHE:O	1.80	0.82
1:A:1058:ARG:HD3	1:A:1171:LEU:HD12	1.62	0.82
1:A:1194:ALA:CB	1:A:1197:PHE:CE1	2.52	0.82
1:A:6:VAL:HA	1:A:79:GLU:O	1.80	0.81
1:A:219:LYS:O	1:A:222:GLU:HB3	1.81	0.81
1:A:22:ASN:HB2	1:A:23:PHE:CD2	2.13	0.80
1:A:1197:PHE:CB	1:A:1216:GLU:OE1	2.26	0.80
1:A:7:ILE:CG2	1:A:19:ILE:HA	2.12	0.80
2:B:66:ILE:O	2:B:66:ILE:HG13	1.79	0.80
2:B:84:LYS:CE	2:B:88:PHE:CZ	2.63	0.79
1:A:35:GLY:HA2	4:A:9999:AGS:O3A	1.83	0.79
1:A:135:ALA:HB3	1:A:136:GLY:CA	2.02	0.78
1:A:1056:PHE:CE2	1:A:1113:PHE:HE1	2.00	0.78
1:A:234:LEU:CD1	1:A:977:LEU:HD23	2.14	0.78
1:A:991:LEU:HD12	1:A:991:LEU:O	1.83	0.78
1:A:1127:SER:HB3	1:A:1130:GLN:CB	2.13	0.78
1:A:44:ALA:O	1:A:47:PHE:HB3	1.83	0.78
1:A:24:SER:CB	1:A:25:PRO:HD2	2.06	0.78
2:B:59:GLU:O	2:B:59:GLU:HG2	1.84	0.77
1:A:15:ARG:HB3	1:A:1206:ILE:HG22	1.63	0.77
1:A:148:GLN:H	1:A:150:LYS:CB	1.97	0.77
1:A:7:ILE:HG22	1:A:19:ILE:HA	1.65	0.77
1:A:981:LEU:O	1:A:981:LEU:HD23	1.85	0.77
2:B:78:ILE:O	2:B:81:VAL:HG12	1.84	0.77
1:A:23:PHE:CB	1:A:1196:LYS:HE2	2.11	0.77
1:A:163:LEU:HD21	1:A:1108:SER:HB2	1.67	0.76
1:A:148:GLN:N	1:A:150:LYS:HB3	2.00	0.76
1:A:234:LEU:HD11	1:A:977:LEU:HD23	1.66	0.75
1:A:1045:PHE:CD1	1:A:1069:ILE:HD12	2.22	0.75
1:A:234:LEU:HD11	1:A:977:LEU:CD2	2.17	0.75
1:A:128:ILE:HG13	1:A:131:MET:HB3	1.68	0.74
1:A:152:VAL:CG1	1:A:153:ALA:H	1.99	0.74
1:A:1160:LEU:HD11	1:A:1165:ARG:HG3	1.67	0.74
1:A:228:LYS:O	1:A:232:PHE:HD1	1.70	0.74
1:A:166:LEU:O	1:A:169:VAL:HG12	1.88	0.74
1:A:15:ARG:HG3	1:A:66:HIS:HE1	1.53	0.74
1:A:1151:TYR:CD2	1:A:1181:PHE:HE1	2.05	0.73
1:A:65:ILE:HG21	1:A:73:VAL:O	1.88	0.73
2:B:67:THR:HB	2:B:70:THR:HG23	1.70	0.73
2:B:67:THR:C	2:B:69:ARG:H	1.90	0.73

Continued on next page...

Continued from previous page...

Atom-1	Atom-2	Interatomic distance (Å)	Clash overlap (Å)
1:A:148:GLN:H	1:A:150:LYS:HB3	1.53	0.73
1:A:23:PHE:CD2	1:A:1198:PHE:CZ	2.77	0.73
1:A:186:MET:HE1	1:A:1026:ILE:CG2	2.17	0.73
1:A:12:LYS:HG2	4:A:9999:AGS:HN61	1.54	0.73
1:A:1196:LYS:O	1:A:1197:PHE:HD1	1.71	0.72
1:A:1194:ALA:HB3	1:A:1197:PHE:CZ	2.24	0.72
1:A:49:LEU:HD21	1:A:144:ASN:HD21	1.54	0.72
1:A:196:ILE:HA	2:B:90:LEU:HD13	1.70	0.72
1:A:1212:VAL:HG21	1:A:1215:GLU:CG	2.18	0.71
1:A:1212:VAL:CG2	1:A:1215:GLU:CG	2.67	0.71
1:A:132:LEU:CD1	1:A:139:MET:HE3	2.20	0.71
1:A:214:ARG:HB2	1:A:999:PHE:HE1	1.56	0.71
1:A:115:ASP:CG	1:A:116:TYR:H	1.94	0.71
1:A:1165:ARG:NH2	1:A:1187:ARG:NE	2.38	0.71
1:A:17:GLU:OE2	1:A:19:ILE:HG23	1.91	0.71
2:B:31:SER:HB2	2:B:77:GLY:HA2	1.73	0.71
1:A:1194:ALA:HB1	1:A:1197:PHE:HE1	1.55	0.70
1:A:148:GLN:N	1:A:150:LYS:CB	2.54	0.70
1:A:217:LEU:HD22	1:A:999:PHE:CE2	2.26	0.70
1:A:121:ARG:O	1:A:122:ASN:CB	2.40	0.70
1:A:183:LEU:HD23	1:A:183:LEU:O	1.91	0.70
1:A:982:ASN:C	1:A:984:MET:H	1.94	0.70
1:A:148:GLN:HG3	1:A:150:LYS:HD3	1.74	0.70
1:A:1022:SER:HB2	2:B:43:ILE:HB	1.73	0.69
1:A:125:LYS:O	1:A:129:VAL:HG23	1.91	0.69
1:A:1165:ARG:HD3	1:A:1189:ASP:OD2	1.93	0.69
2:B:65:TYR:CE2	2:B:66:ILE:HG13	2.28	0.69
1:A:22:ASN:CG	1:A:23:PHE:CD1	2.60	0.69
1:A:975:ASP:HA	1:A:978:LEU:HD12	1.75	0.69
1:A:12:LYS:HG2	4:A:9999:AGS:N6	2.07	0.69
1:A:1045:PHE:CE1	1:A:1069:ILE:HD12	2.28	0.68
1:A:57:LYS:CA	1:A:61:ARG:HH12	2.04	0.68
1:A:159:ASP:N	1:A:162:ARG:NH1	2.40	0.68
1:A:214:ARG:HB2	1:A:999:PHE:CD1	2.28	0.68
1:A:140:ASN:O	1:A:142:PRO:HD3	1.93	0.68
1:A:1161:ASP:CG	1:A:1162:LYS:N	2.46	0.68
1:A:1186:PHE:HE2	1:A:1187:ARG:HH12	1.41	0.68
2:B:100:ILE:O	2:B:102:MET:N	2.23	0.68
1:A:8:ILE:CD1	1:A:14:TYR:HB3	2.24	0.67
1:A:239:LEU:O	1:A:243:ILE:HG13	1.95	0.67
1:A:1018:GLU:OE1	1:A:1019:LEU:HD12	1.94	0.67

Continued on next page...

Continued from previous page...

Atom-1	Atom-2	Interatomic distance (Å)	Clash overlap (Å)
2:B:67:THR:O	2:B:69:ARG:N	2.27	0.67
2:B:65:TYR:OH	2:B:66:ILE:CG1	2.41	0.66
1:A:975:ASP:HA	1:A:978:LEU:CD1	2.26	0.65
1:A:62:GLN:HG3	1:A:63:GLY:N	2.11	0.65
2:B:84:LYS:CE	2:B:88:PHE:HZ	2.05	0.65
1:A:65:ILE:O	1:A:66:HIS:HB3	1.94	0.65
1:A:163:LEU:HA	1:A:1109:ILE:HD12	1.77	0.65
2:B:42:HIS:ND1	2:B:45:GLU:HB2	2.12	0.65
1:A:135:ALA:CB	1:A:136:GLY:CA	2.68	0.65
1:A:1058:ARG:CD	1:A:1171:LEU:HD12	2.26	0.65
1:A:1202:TYR:OH	1:A:1204:ASN:O	2.14	0.65
1:A:240:ASN:HA	1:A:243:ILE:HD12	1.78	0.65
2:B:78:ILE:HG23	2:B:79:VAL:N	2.12	0.64
1:A:120:ASP:OD1	1:A:121:ARG:N	2.28	0.64
1:A:138:SER:HB2	1:A:140:ASN:HB2	1.80	0.64
1:A:1191:LEU:HD11	1:A:1220:PHE:CE2	2.32	0.64
1:A:124:THR:HG22	1:A:125:LYS:N	2.13	0.64
1:A:231:GLN:HG2	1:A:235:TYR:CE2	2.33	0.64
1:A:12:LYS:HA	4:A:9999:AGS:C6	2.27	0.64
1:A:1068:ILE:HG23	1:A:1110:SER:HB2	1.79	0.64
1:A:217:LEU:CD2	1:A:999:PHE:CE2	2.81	0.63
1:A:1015:ARG:HH22	2:B:89:LEU:HA	1.63	0.63
1:A:1202:TYR:HD1	1:A:1207:SER:OG	1.82	0.63
1:A:231:GLN:O	1:A:235:TYR:CD2	2.50	0.63
2:B:65:TYR:HH	2:B:66:ILE:HD11	1.63	0.63
1:A:152:VAL:CG1	1:A:153:ALA:N	2.51	0.63
1:A:227:ARG:CA	1:A:984:MET:SD	2.87	0.63
1:A:227:ARG:HA	1:A:984:MET:SD	2.39	0.63
1:A:119:ASN:O	1:A:120:ASP:OD1	2.16	0.63
2:B:81:VAL:HG13	2:B:82:TYR:N	2.14	0.62
1:A:186:MET:CE	1:A:1026:ILE:HG21	2.21	0.62
1:A:174:SER:HB3	2:B:69:ARG:NH1	2.14	0.62
2:B:41:THR:CG2	2:B:42:HIS:N	2.50	0.62
1:A:1139:ILE:O	1:A:1143:GLN:HG3	2.00	0.62
1:A:982:ASN:O	1:A:984:MET:N	2.33	0.62
1:A:1165:ARG:NH2	1:A:1187:ARG:HE	1.97	0.62
2:B:63:ASN:OD1	2:B:64:GLU:N	2.33	0.62
1:A:152:VAL:C	1:A:154:LEU:H	1.94	0.61
1:A:154:LEU:O	1:A:157:ALA:HB3	1.99	0.61
1:A:217:LEU:HD23	1:A:217:LEU:O	2.00	0.61
1:A:147:PRO:HB3	1:A:1154:ASP:HB2	1.82	0.61

Continued on next page...

Continued from previous page...

Atom-1	Atom-2	Interatomic distance (Å)	Clash overlap (Å)
1:A:228:LYS:O	1:A:232:PHE:CD1	2.53	0.61
1:A:982:ASN:O	1:A:986:THR:HG23	2.01	0.61
1:A:1186:PHE:HA	1:A:1220:PHE:CE1	2.36	0.61
1:A:1212:VAL:CG1	1:A:1216:GLU:HB2	2.05	0.60
1:A:148:GLN:CG	1:A:150:LYS:HD3	2.30	0.60
2:B:92:ASP:O	2:B:93:ILE:C	2.38	0.60
1:A:1068:ILE:CG2	1:A:1110:SER:HB2	2.30	0.60
1:A:1120:GLN:O	1:A:1121:LEU:CD1	2.49	0.60
1:A:147:PRO:O	1:A:150:LYS:HB3	2.00	0.60
1:A:200:MET:HE1	1:A:1013:ALA:HB2	1.83	0.60
2:B:65:TYR:CZ	2:B:66:ILE:CD1	2.82	0.60
1:A:115:ASP:OD1	1:A:116:TYR:N	2.32	0.60
1:A:228:LYS:O	1:A:228:LYS:HG2	2.02	0.60
1:A:982:ASN:C	1:A:984:MET:N	2.55	0.59
1:A:1176:SER:O	1:A:1177:LYS:C	2.40	0.59
1:A:152:VAL:C	1:A:154:LEU:N	2.55	0.59
1:A:1156:ILE:HG12	1:A:1156:ILE:O	2.02	0.59
1:A:1165:ARG:CZ	1:A:1187:ARG:HD2	2.33	0.59
1:A:980:ARG:NH1	1:A:984:MET:HG3	2.17	0.59
1:A:1212:VAL:HG22	1:A:1213:ASN:N	2.17	0.59
1:A:224:GLU:HG3	1:A:227:ARG:HH21	1.67	0.59
1:A:137:PHE:HD1	1:A:1148:ALA:HA	1.67	0.58
1:A:218:GLU:N	1:A:999:PHE:HZ	2.01	0.58
1:A:224:GLU:O	1:A:224:GLU:HG2	2.04	0.58
1:A:240:ASN:O	1:A:243:ILE:HB	2.04	0.58
1:A:1134:CYS:O	1:A:1135:ALA:C	2.42	0.58
2:B:67:THR:C	2:B:69:ARG:N	2.57	0.58
2:B:74:LEU:O	2:B:75:LEU:C	2.41	0.58
1:A:1136:ILE:O	1:A:1137:ALA:C	2.41	0.58
1:A:1160:LEU:HD12	1:A:1161:ASP:O	2.04	0.58
2:B:29:ASN:O	2:B:30:MET:C	2.39	0.58
2:B:51:ALA:HB1	2:B:56:CYS:HB2	1.86	0.58
1:A:1023:LYS:O	1:A:1025:SER:N	2.37	0.58
1:A:160:LYS:HA	1:A:163:LEU:HD13	1.86	0.58
1:A:178:LYS:O	1:A:179:LEU:C	2.42	0.58
1:A:980:ARG:HH12	1:A:984:MET:HG3	1.68	0.58
1:A:119:ASN:O	1:A:121:ARG:N	2.36	0.58
1:A:20:ILE:CG2	1:A:1209:VAL:O	2.42	0.58
1:A:138:SER:HB2	1:A:140:ASN:H	1.69	0.58
1:A:200:MET:CE	1:A:1013:ALA:HB2	2.34	0.57
1:A:20:ILE:O	1:A:20:ILE:HG22	2.02	0.57

Continued on next page...

Continued from previous page...

Atom-1	Atom-2	Interatomic distance (Å)	Clash overlap (Å)
1:A:1173:LYS:HD2	1:A:1193:VAL:O	2.04	0.57
1:A:43:ALA:O	1:A:47:PHE:HB2	2.03	0.57
1:A:233:THR:O	1:A:237:ARG:N	2.25	0.57
1:A:1142:ILE:O	1:A:1145:VAL:HG12	2.04	0.57
1:A:164:GLN:O	1:A:165:LEU:C	2.43	0.57
1:A:202:GLU:HG3	2:B:97:LEU:HD11	1.86	0.57
2:B:53:ALA:O	2:B:66:ILE:HG23	2.05	0.57
1:A:1012:LEU:O	1:A:1015:ARG:N	2.38	0.57
1:A:1191:LEU:C	1:A:1193:VAL:H	2.07	0.56
1:A:145:ILE:HG13	1:A:1152:LEU:HD12	1.88	0.56
1:A:143:TYR:HB3	1:A:1143:GLN:HG2	1.88	0.56
1:A:1151:TYR:HD2	1:A:1181:PHE:HE1	1.49	0.56
1:A:110:GLY:H	1:A:114:ASP:HB2	1.71	0.56
1:A:1201:LYS:O	1:A:1207:SER:HA	2.06	0.56
1:A:194:ILE:HG13	1:A:195:GLN:N	2.19	0.56
1:A:1120:GLN:HG2	1:A:1121:LEU:CA	2.36	0.55
1:A:1138:LEU:O	1:A:1141:ALA:HB3	2.06	0.55
1:A:23:PHE:HB3	1:A:1196:LYS:CD	2.36	0.55
1:A:25:PRO:O	1:A:26:HIS:HB2	2.05	0.55
1:A:62:GLN:CG	1:A:63:GLY:N	2.70	0.55
1:A:1058:ARG:HD3	1:A:1171:LEU:CD1	2.35	0.55
1:A:222:GLU:OE1	1:A:223:LEU:HD23	2.07	0.55
1:A:244:ASN:C	1:A:246:MET:H	2.09	0.55
1:A:1158:ALA:HA	1:A:1186:PHE:CZ	2.42	0.55
1:A:1019:LEU:HD21	2:B:86:ALA:HB2	1.88	0.55
1:A:30:ILE:CD1	1:A:1182:ILE:HG23	2.37	0.55
1:A:173:LYS:HD2	1:A:176:GLU:CB	2.37	0.55
2:B:97:LEU:O	2:B:100:ILE:CG1	2.52	0.55
1:A:177:VAL:HG13	1:A:178:LYS:N	2.22	0.55
1:A:49:LEU:O	1:A:139:MET:HE1	2.06	0.55
1:A:148:GLN:CD	1:A:150:LYS:HD3	2.28	0.54
1:A:207:LEU:HD21	1:A:1006:ASN:HA	1.89	0.54
1:A:40:ASN:O	1:A:43:ALA:HB3	2.08	0.54
1:A:147:PRO:C	1:A:150:LYS:HB3	2.27	0.54
1:A:154:LEU:HA	1:A:157:ALA:HB2	1.90	0.54
1:A:39:SER:N	4:A:9999:AGS:O1B	2.30	0.54
1:A:1005:PHE:CD2	2:B:100:ILE:HG22	2.43	0.54
1:A:59:GLU:HG3	1:A:62:GLN:NE2	2.22	0.54
1:A:148:GLN:HG3	1:A:150:LYS:CG	2.37	0.54
1:A:1120:GLN:HG2	1:A:1121:LEU:HA	1.90	0.54
1:A:1022:SER:HB2	2:B:43:ILE:CB	2.38	0.54

Continued on next page...

Continued from previous page...

Atom-1	Atom-2	Interatomic distance (Å)	Clash overlap (Å)
1:A:1120:GLN:O	1:A:1121:LEU:HB2	2.08	0.54
1:A:20:ILE:O	1:A:21:ASP:OD1	2.25	0.54
1:A:111:LEU:O	1:A:111:LEU:CD1	2.47	0.53
1:A:236:ASP:O	1:A:240:ASN:N	2.38	0.53
2:B:66:ILE:C	2:B:68:LEU:H	2.11	0.53
1:A:121:ARG:O	1:A:122:ASN:HB2	2.09	0.53
1:A:151:ILE:HD13	1:A:1156:ILE:HG13	1.89	0.53
1:A:159:ASP:N	1:A:162:ARG:HH11	2.05	0.53
1:A:31:ILE:HD12	1:A:32:GLY:N	2.23	0.53
1:A:62:GLN:CG	1:A:63:GLY:H	2.22	0.53
2:B:78:ILE:CG2	2:B:79:VAL:N	2.72	0.53
1:A:238:GLU:OE2	1:A:978:LEU:HD21	2.08	0.53
1:A:159:ASP:HA	1:A:162:ARG:HH11	1.73	0.53
1:A:1150:PHE:HD1	1:A:1180:GLN:CG	2.22	0.52
2:B:81:VAL:HG13	2:B:82:TYR:H	1.74	0.52
1:A:148:GLN:N	1:A:150:LYS:HB2	2.24	0.52
1:A:155:THR:OG1	1:A:156:ASN:N	2.42	0.52
1:A:23:PHE:CZ	1:A:1211:GLU:CD	2.82	0.52
2:B:68:LEU:HA	2:B:71:SER:HB2	1.92	0.52
1:A:1056:PHE:HZ	1:A:1113:PHE:CZ	2.26	0.52
1:A:1127:SER:N	1:A:1130:GLN:HB3	2.24	0.52
1:A:1165:ARG:HH21	1:A:1187:ARG:HE	1.57	0.52
1:A:118:LEU:HB2	1:A:123:VAL:H	1.74	0.52
1:A:12:LYS:NZ	1:A:64:LEU:HD23	2.25	0.52
1:A:239:LEU:O	1:A:239:LEU:HD23	2.10	0.52
1:A:196:ILE:HA	2:B:90:LEU:CD1	2.36	0.52
2:B:66:ILE:C	2:B:68:LEU:N	2.62	0.52
2:B:75:LEU:O	2:B:78:ILE:CG2	2.41	0.52
1:A:1137:ALA:O	1:A:1138:LEU:C	2.47	0.52
1:A:189:THR:HG21	2:B:82:TYR:CE1	2.45	0.52
1:A:148:GLN:HG3	1:A:150:LYS:CD	2.39	0.52
1:A:8:ILE:HD11	1:A:14:TYR:HB3	1.92	0.52
2:B:67:THR:HG22	2:B:67:THR:O	2.09	0.52
1:A:1135:ALA:O	1:A:1138:LEU:HB3	2.10	0.52
1:A:23:PHE:CE2	1:A:1198:PHE:CE2	2.98	0.52
1:A:74:MET:O	1:A:110:GLY:HA2	2.09	0.52
1:A:27:GLN:O	1:A:1195:ASP:HB3	2.09	0.52
1:A:62:GLN:HG3	1:A:63:GLY:H	1.75	0.52
1:A:30:ILE:HD11	1:A:1182:ILE:HG23	1.91	0.52
1:A:1120:GLN:CG	1:A:1121:LEU:N	2.66	0.51
1:A:128:ILE:HA	1:A:131:MET:HB3	1.92	0.51

Continued on next page...

Continued from previous page...

Atom-1	Atom-2	Interatomic distance (Å)	Clash overlap (Å)
1:A:41:PHE:O	1:A:44:ALA:CB	2.53	0.51
1:A:1129:GLY:O	1:A:1132:THR:HB	2.10	0.51
1:A:40:ASN:HD21	4:A:9999:AGS:H5'2	1.76	0.51
1:A:1160:LEU:HD11	1:A:1165:ARG:CG	2.37	0.51
1:A:1026:ILE:O	1:A:1029:LEU:N	2.42	0.51
1:A:1161:ASP:OD1	1:A:1162:LYS:HG2	2.11	0.51
1:A:145:ILE:O	1:A:146:VAL:HG23	2.11	0.51
1:A:979:GLN:CD	1:A:979:GLN:H	2.12	0.51
2:B:50:ILE:O	2:B:53:ALA:N	2.44	0.51
1:A:1057:GLU:OE1	1:A:1063:GLY:O	2.29	0.51
1:A:26:HIS:NE2	1:A:1177:LYS:HA	2.25	0.51
1:A:8:ILE:HD13	1:A:14:TYR:HB3	1.93	0.51
1:A:22:ASN:CB	1:A:23:PHE:HA	2.40	0.51
1:A:65:ILE:O	1:A:65:ILE:HG22	2.11	0.51
1:A:116:TYR:CD1	1:A:118:LEU:CD2	2.85	0.51
1:A:137:PHE:HE1	1:A:1147:PRO:O	1.93	0.51
1:A:224:GLU:HG3	1:A:227:ARG:NH2	2.25	0.50
2:B:100:ILE:C	2:B:102:MET:H	2.10	0.50
1:A:203:LEU:HD23	1:A:1009:ARG:HG3	1.92	0.50
1:A:991:LEU:O	1:A:991:LEU:CD1	2.58	0.50
1:A:995:ASN:OD1	1:A:995:ASN:C	2.49	0.50
1:A:1113:PHE:CZ	1:A:1115:SER:OG	2.60	0.50
1:A:193:LYS:HA	1:A:196:ILE:HD12	1.93	0.50
1:A:220:TYR:CE1	1:A:988:ILE:HG23	2.47	0.50
1:A:49:LEU:HD21	1:A:144:ASN:ND2	2.25	0.50
1:A:1032:LYS:O	1:A:1036:GLN:HG2	2.12	0.50
1:A:1162:LYS:O	1:A:1164:TYR:N	2.45	0.50
1:A:1160:LEU:CD1	1:A:1165:ARG:HG3	2.36	0.50
1:A:146:VAL:HG21	1:A:1143:GLN:NE2	2.27	0.50
1:A:147:PRO:CB	1:A:148:GLN:CA	2.68	0.50
1:A:1013:ALA:HA	1:A:1016:ALA:HB3	1.93	0.49
1:A:15:ARG:HG3	1:A:66:HIS:CE1	2.40	0.49
1:A:66:HIS:HA	4:A:9999:AGS:N1	2.27	0.49
1:A:1200:VAL:HA	1:A:1208:THR:O	2.12	0.49
1:A:10:GLY:HA2	1:A:15:ARG:O	2.11	0.49
1:A:1120:GLN:C	1:A:1121:LEU:HD12	2.33	0.49
1:A:220:TYR:HE1	1:A:988:ILE:HG23	1.77	0.49
1:A:115:ASP:CG	1:A:116:TYR:N	2.65	0.49
1:A:169:VAL:C	1:A:171:GLY:H	2.15	0.49
1:A:124:THR:HG22	1:A:125:LYS:H	1.77	0.49
1:A:1147:PRO:HA	1:A:1151:TYR:OH	2.13	0.49

Continued on next page...

Continued from previous page...

Atom-1	Atom-2	Interatomic distance (Å)	Clash overlap (Å)
1:A:11:PHE:CZ	1:A:12:LYS:NZ	2.72	0.49
2:B:25:TRP:HB3	2:B:26:LEU:HD12	1.93	0.49
2:B:25:TRP:C	2:B:27:ALA:N	2.65	0.49
1:A:1212:VAL:HG22	1:A:1213:ASN:H	1.75	0.49
1:A:121:ARG:O	1:A:122:ASN:HB3	2.11	0.49
1:A:137:PHE:CD1	1:A:1148:ALA:HA	2.47	0.49
1:A:1140:LEU:O	1:A:1144:MET:HG2	2.11	0.48
1:A:1161:ASP:CG	1:A:1162:LYS:HG2	2.33	0.48
1:A:1171:LEU:O	1:A:1175:LEU:HG	2.12	0.48
1:A:26:HIS:HE2	1:A:1177:LYS:HA	1.78	0.48
2:B:74:LEU:O	2:B:77:GLY:N	2.46	0.48
1:A:223:LEU:O	1:A:225:ARG:N	2.46	0.48
1:A:65:ILE:CG2	1:A:65:ILE:O	2.60	0.48
1:A:1160:LEU:HD13	1:A:1164:TYR:HB2	1.94	0.48
1:A:193:LYS:O	1:A:196:ILE:HB	2.13	0.48
1:A:979:GLN:OE1	1:A:979:GLN:N	2.39	0.48
1:A:40:ASN:N	4:A:9999:AGS:O2A	2.32	0.48
2:B:58:ASP:CG	2:B:58:ASP:O	2.52	0.48
1:A:174:SER:O	1:A:177:VAL:CG1	2.55	0.48
1:A:50:SER:HA	1:A:139:MET:CE	2.44	0.48
1:A:214:ARG:CB	1:A:999:PHE:HE1	2.23	0.48
1:A:1191:LEU:HD11	1:A:1220:PHE:CD2	2.48	0.48
1:A:207:LEU:CD2	1:A:1006:ASN:HA	2.42	0.48
1:A:1213:ASN:O	1:A:1216:GLU:HB3	2.13	0.48
1:A:973:THR:HA	1:A:976:GLN:OE1	2.12	0.48
1:A:974:SER:O	1:A:978:LEU:HG	2.14	0.48
1:A:111:LEU:O	1:A:112:LYS:CB	2.61	0.48
1:A:31:ILE:HG22	1:A:1185:THR:O	2.13	0.48
1:A:49:LEU:O	1:A:139:MET:CE	2.62	0.48
1:A:170:VAL:C	1:A:172:ALA:H	2.16	0.48
2:B:26:LEU:O	2:B:27:ALA:C	2.52	0.48
1:A:146:VAL:O	1:A:146:VAL:HG12	2.14	0.48
1:A:22:ASN:HB3	1:A:23:PHE:HA	1.95	0.48
2:B:81:VAL:CG1	2:B:82:TYR:N	2.77	0.47
1:A:1199:ARG:O	1:A:1209:VAL:HA	2.15	0.47
1:A:1142:ILE:O	1:A:1143:GLN:C	2.52	0.47
1:A:1161:ASP:O	1:A:1165:ARG:HG3	2.13	0.47
1:A:1113:PHE:C	1:A:1120:GLN:HG3	2.34	0.47
1:A:148:GLN:H	1:A:150:LYS:HB2	1.76	0.47
1:A:19:ILE:O	1:A:20:ILE:HD13	2.13	0.47
1:A:128:ILE:HG12	1:A:132:LEU:HG	1.97	0.47

Continued on next page...

Continued from previous page...

Atom-1	Atom-2	Interatomic distance (Å)	Clash overlap (Å)
2:B:92:ASP:O	2:B:94:LYS:N	2.46	0.47
1:A:203:LEU:O	1:A:206:LYS:N	2.48	0.47
1:A:227:ARG:N	1:A:984:MET:SD	2.88	0.47
1:A:38:LYS:O	1:A:41:PHE:HB3	2.14	0.47
1:A:204:ASN:OD1	1:A:1009:ARG:HD2	2.13	0.47
1:A:59:GLU:HA	1:A:62:GLN:CD	2.34	0.47
1:A:1041:VAL:O	1:A:1043:SER:N	2.48	0.47
1:A:132:LEU:HB3	1:A:138:SER:HA	1.96	0.47
1:A:1056:PHE:CE2	1:A:1113:PHE:CE1	2.89	0.47
1:A:1184:THR:HG22	1:A:1185:THR:N	2.29	0.47
1:A:22:ASN:CB	1:A:23:PHE:CA	2.92	0.47
1:A:997:ARG:O	1:A:1000:GLU:N	2.44	0.47
2:B:100:ILE:C	2:B:102:MET:N	2.68	0.47
1:A:163:LEU:HD11	1:A:1108:SER:CA	2.45	0.47
2:B:59:GLU:O	2:B:59:GLU:CG	2.53	0.46
1:A:7:ILE:CD1	1:A:19:ILE:HG22	2.45	0.46
1:A:1127:SER:O	1:A:1128:GLY:C	2.52	0.46
1:A:234:LEU:HD11	1:A:977:LEU:HD22	1.94	0.46
1:A:234:LEU:HD13	1:A:977:LEU:HD23	1.95	0.46
1:A:124:THR:CG2	1:A:125:LYS:N	2.78	0.46
1:A:188:GLU:O	1:A:189:THR:C	2.54	0.46
1:A:25:PRO:HB2	1:A:26:HIS:ND1	2.31	0.46
1:A:59:GLU:HA	1:A:62:GLN:HG2	1.98	0.46
1:A:1154:ASP:O	1:A:1155:GLU:C	2.53	0.46
1:A:23:PHE:CE2	1:A:1198:PHE:CZ	3.03	0.46
1:A:1216:GLU:O	1:A:1219:GLY:N	2.48	0.46
1:A:150:LYS:HA	1:A:153:ALA:HB3	1.98	0.46
1:A:26:HIS:CD2	1:A:1177:LYS:HA	2.50	0.46
1:A:62:GLN:O	1:A:63:GLY:C	2.53	0.46
1:A:186:MET:CE	1:A:1026:ILE:CG2	2.89	0.46
1:A:1026:ILE:O	1:A:1029:LEU:HB3	2.16	0.46
1:A:163:LEU:HD11	1:A:1108:SER:N	2.31	0.46
1:A:31:ILE:CG2	1:A:1220:PHE:CZ	2.75	0.46
1:A:223:LEU:C	1:A:225:ARG:H	2.19	0.46
1:A:1012:LEU:O	1:A:1014:GLU:N	2.48	0.46
1:A:1035:GLN:O	1:A:1038:VAL:HG22	2.16	0.46
1:A:15:ARG:NH1	1:A:1205:LYS:HE3	2.30	0.46
1:A:15:ARG:CB	1:A:1206:ILE:HG22	2.41	0.46
1:A:152:VAL:O	1:A:155:THR:N	2.49	0.46
1:A:154:LEU:HA	1:A:157:ALA:CB	2.46	0.46
1:A:1005:PHE:CE2	2:B:100:ILE:HG22	2.50	0.46

Continued on next page...

Continued from previous page...

Atom-1	Atom-2	Interatomic distance (Å)	Clash overlap (Å)
1:A:1214:ARG:O	1:A:1218:ILE:HG12	2.15	0.46
1:A:1218:ILE:HG22	1:A:1222:ARG:HE	1.81	0.46
1:A:178:LYS:O	1:A:181:ALA:N	2.49	0.46
1:A:217:LEU:HD22	1:A:999:PHE:CD2	2.51	0.46
1:A:217:LEU:HD23	1:A:999:PHE:CE2	2.51	0.45
1:A:6:VAL:O	1:A:7:ILE:HG23	2.17	0.45
1:A:1041:VAL:O	1:A:1044:THR:N	2.49	0.45
1:A:1120:GLN:O	1:A:1121:LEU:HD13	2.16	0.45
1:A:1169:ALA:HB1	1:A:1190:MET:HA	1.98	0.45
2:B:67:THR:HB	2:B:70:THR:CG2	2.41	0.45
2:B:78:ILE:HG23	2:B:79:VAL:HG23	1.99	0.45
2:B:81:VAL:CG1	2:B:82:TYR:H	2.30	0.45
1:A:142:PRO:HG2	1:A:143:TYR:CD2	2.51	0.45
1:A:7:ILE:HG21	1:A:19:ILE:HA	1.98	0.45
1:A:211:GLU:O	1:A:214:ARG:HG2	2.16	0.45
1:A:22:ASN:HB2	1:A:23:PHE:CA	2.46	0.45
1:A:22:ASN:CB	1:A:23:PHE:CD2	2.91	0.45
1:A:196:ILE:CA	2:B:90:LEU:HD13	2.41	0.45
2:B:89:LEU:C	2:B:89:LEU:HD23	2.37	0.45
1:A:161:GLU:O	1:A:164:GLN:HB2	2.16	0.45
1:A:40:ASN:HD21	4:A:9999:AGS:C5'	2.29	0.45
2:B:82:TYR:C	2:B:82:TYR:CD1	2.88	0.45
1:A:231:GLN:O	1:A:235:TYR:CG	2.70	0.45
1:A:57:LYS:CA	1:A:61:ARG:NH1	2.59	0.45
1:A:5:ARG:O	1:A:80:ILE:HA	2.16	0.45
1:A:145:ILE:CG1	1:A:146:VAL:N	2.52	0.45
1:A:1140:LEU:O	1:A:1141:ALA:C	2.53	0.45
1:A:1186:PHE:HA	1:A:1220:PHE:HE1	1.79	0.45
1:A:227:ARG:HB2	1:A:984:MET:SD	2.57	0.45
1:A:1052:PHE:CD2	1:A:1067:LEU:CD1	3.00	0.44
1:A:30:ILE:CD1	1:A:1182:ILE:CG2	2.94	0.44
1:A:163:LEU:HA	1:A:1109:ILE:CD1	2.45	0.44
1:A:65:ILE:O	1:A:66:HIS:CB	2.63	0.44
2:B:31:SER:HB2	2:B:77:GLY:CA	2.42	0.44
2:B:88:PHE:O	2:B:89:LEU:C	2.55	0.44
1:A:1191:LEU:C	1:A:1193:VAL:N	2.70	0.44
1:A:17:GLU:OE2	1:A:19:ILE:CG2	2.65	0.44
2:B:25:TRP:O	2:B:26:LEU:C	2.54	0.44
2:B:75:LEU:O	2:B:76:GLN:C	2.56	0.44
1:A:116:TYR:HD1	1:A:118:LEU:HD21	1.69	0.44
1:A:118:LEU:CD1	1:A:124:THR:O	2.66	0.44

Continued on next page...

Continued from previous page...

Atom-1	Atom-2	Interatomic distance (Å)	Clash overlap (Å)
1:A:39:SER:HB2	4:A:9999:AGS:O2B	2.17	0.44
2:B:51:ALA:HB1	2:B:56:CYS:SG	2.58	0.44
1:A:1029:LEU:O	1:A:1032:LYS:HB2	2.17	0.44
1:A:1202:TYR:CD1	1:A:1207:SER:OG	2.66	0.44
1:A:12:LYS:HA	4:A:9999:AGS:N6	2.33	0.44
1:A:111:LEU:O	1:A:112:LYS:HB3	2.18	0.44
1:A:1127:SER:O	1:A:1128:GLY:O	2.35	0.44
1:A:161:GLU:O	1:A:165:LEU:HG	2.18	0.44
1:A:1113:PHE:HZ	1:A:1115:SER:HG	1.58	0.44
1:A:1136:ILE:O	1:A:1139:ILE:N	2.51	0.44
1:A:1120:GLN:O	1:A:1121:LEU:HD12	2.17	0.43
1:A:1132:THR:HG21	1:A:1159:ALA:O	2.19	0.43
1:A:1214:ARG:NH1	1:A:1218:ILE:CD1	2.81	0.43
1:A:196:ILE:CG1	2:B:90:LEU:HD13	2.49	0.43
1:A:23:PHE:HD2	1:A:1198:PHE:HZ	1.59	0.43
1:A:996:LYS:O	1:A:996:LYS:HG2	2.17	0.43
2:B:78:ILE:CG2	2:B:79:VAL:H	2.32	0.43
1:A:1041:VAL:C	1:A:1043:SER:N	2.71	0.43
1:A:1173:LYS:O	1:A:1176:SER:HB3	2.18	0.43
1:A:185:LYS:HA	1:A:188:GLU:HB3	2.01	0.43
1:A:244:ASN:C	1:A:246:MET:N	2.72	0.43
2:B:29:ASN:OD1	2:B:29:ASN:C	2.57	0.43
1:A:1196:LYS:C	1:A:1197:PHE:CD1	2.85	0.43
1:A:138:SER:HB2	1:A:140:ASN:N	2.33	0.43
1:A:189:THR:HG21	2:B:82:TYR:HE1	1.80	0.43
1:A:1058:ARG:O	1:A:1061:PRO:HD3	2.19	0.43
1:A:42:PHE:CD2	1:A:1154:ASP:OD1	2.72	0.43
1:A:115:ASP:OD1	1:A:116:TYR:CD2	2.72	0.43
1:A:1197:PHE:O	1:A:1211:GLU:HG3	2.18	0.43
1:A:1015:ARG:HH22	2:B:89:LEU:CA	2.31	0.42
1:A:19:ILE:HG13	1:A:19:ILE:O	2.19	0.42
1:A:42:PHE:CD1	1:A:45:ILE:HD12	2.54	0.42
1:A:1023:LYS:C	1:A:1025:SER:H	2.22	0.42
1:A:1060:VAL:C	1:A:1062:ARG:H	2.22	0.42
1:A:1121:LEU:HB3	1:A:1122:HIS:H	1.68	0.42
1:A:232:PHE:HA	1:A:235:TYR:CD2	2.54	0.42
1:A:23:PHE:HE2	1:A:1198:PHE:HE2	1.67	0.42
1:A:57:LYS:HG2	1:A:61:ARG:HH12	1.84	0.42
2:B:43:ILE:HG22	2:B:44:ALA:N	2.33	0.42
1:A:1164:TYR:O	1:A:1165:ARG:C	2.57	0.42
1:A:214:ARG:HG3	1:A:215:LYS:N	2.34	0.42

Continued on next page...

Continued from previous page...

Atom-1	Atom-2	Interatomic distance (Å)	Clash overlap (Å)
1:A:230:TYR:HE2	1:A:984:MET:CE	2.32	0.42
1:A:1053:GLU:O	1:A:1054:ALA:C	2.56	0.42
2:B:63:ASN:CG	2:B:64:GLU:H	2.22	0.42
1:A:163:LEU:CA	1:A:1109:ILE:HD12	2.45	0.42
1:A:1126:LEU:HD23	1:A:1126:LEU:HA	1.87	0.42
1:A:1164:TYR:O	1:A:1167:ALA:N	2.52	0.42
1:A:184:LYS:O	1:A:188:GLU:N	2.53	0.42
1:A:1053:GLU:O	1:A:1056:PHE:N	2.52	0.42
1:A:1154:ASP:O	1:A:1156:ILE:N	2.53	0.42
1:A:148:GLN:CB	1:A:150:LYS:HB2	2.49	0.42
1:A:1196:LYS:O	1:A:1197:PHE:CE1	2.65	0.42
1:A:1214:ARG:HH12	1:A:1218:ILE:HD13	1.85	0.42
4:A:9999:AGS:O2B	4:A:9999:AGS:O1A	2.38	0.42
2:B:79:VAL:O	2:B:80:ARG:C	2.58	0.42
1:A:1040:ALA:O	1:A:1044:THR:HG23	2.19	0.42
1:A:203:LEU:O	1:A:204:ASN:C	2.58	0.42
2:B:87:THR:O	2:B:88:PHE:C	2.57	0.42
1:A:1151:TYR:CD2	1:A:1181:PHE:CE1	2.97	0.41
1:A:1019:LEU:O	1:A:1020:ASP:C	2.58	0.41
1:A:215:LYS:O	1:A:218:GLU:HB3	2.20	0.41
2:B:58:ASP:O	2:B:58:ASP:OD1	2.38	0.41
2:B:60:SER:HA	2:B:61:GLY:HA2	1.89	0.41
2:B:101:SER:C	2:B:102:MET:HG3	2.40	0.41
2:B:78:ILE:HG23	2:B:79:VAL:H	1.84	0.41
1:A:1028:ASP:O	1:A:1031:VAL:HG22	2.20	0.41
1:A:1051:ASN:O	1:A:1054:ALA:HB3	2.19	0.41
1:A:1218:ILE:O	1:A:1222:ARG:HG3	2.21	0.41
1:A:190:GLU:CD	1:A:190:GLU:O	2.59	0.41
1:A:1113:PHE:CE2	1:A:1115:SER:OG	2.66	0.41
1:A:1059:LEU:CD1	1:A:1171:LEU:HD13	2.50	0.41
1:A:1192:GLN:C	1:A:1193:VAL:HG23	2.41	0.41
1:A:1173:LYS:HD2	1:A:1193:VAL:HG12	2.02	0.41
2:B:81:VAL:O	2:B:84:LYS:N	2.53	0.41
1:A:1023:LYS:C	1:A:1025:SER:N	2.74	0.41
1:A:42:PHE:CD2	1:A:1152:LEU:HD13	2.56	0.41
1:A:1214:ARG:HH12	1:A:1218:ILE:CD1	2.34	0.41
1:A:156:ASN:HD22	1:A:156:ASN:H	1.68	0.41
1:A:159:ASP:CA	1:A:162:ARG:HH11	2.32	0.41
1:A:203:LEU:HD12	1:A:203:LEU:HA	1.83	0.41
1:A:1150:PHE:HD1	1:A:1180:GLN:HG2	1.86	0.41
1:A:229:ILE:HD12	1:A:232:PHE:HB2	2.02	0.41

Continued on next page...

Continued from previous page...

Atom-1	Atom-2	Interatomic distance (Å)	Clash overlap (Å)
1:A:1131:LYS:O	1:A:1133:VAL:N	2.54	0.41
1:A:162:ARG:O	1:A:163:LEU:C	2.60	0.41
2:B:77:GLY:O	2:B:78:ILE:C	2.60	0.41
1:A:1120:GLN:O	1:A:1121:LEU:CB	2.68	0.40
2:B:51:ALA:O	2:B:56:CYS:HB2	2.21	0.40
1:A:1161:ASP:OD2	1:A:1162:LYS:HG2	2.22	0.40
1:A:219:LYS:HA	1:A:219:LYS:HD2	1.89	0.40
1:A:224:GLU:O	1:A:224:GLU:CG	2.70	0.40
1:A:27:GLN:HE21	1:A:1173:LYS:HA	1.87	0.40
1:A:169:VAL:CG1	1:A:170:VAL:N	2.85	0.40
1:A:226:ASN:ND2	1:A:984:MET:HE2	2.36	0.40
2:B:29:ASN:O	2:B:29:ASN:OD1	2.39	0.40
2:B:73:GLU:O	2:B:76:GLN:HB3	2.21	0.40

All (1) symmetry-related close contacts are listed below. The label for Atom-2 includes the symmetry operator and encoded unit-cell translations to be applied.

Atom-1	Atom-2	Interatomic distance (Å)	Clash overlap (Å)
1:A:236:ASP:OD1	1:A:236:ASP:OD1[4_5310]	1.81	0.39

5.3 Torsion angles [i](#)

5.3.1 Protein backbone [i](#)

In the following table, the Percentiles column shows the percent Ramachandran outliers of the chain as a percentile score with respect to all X-ray entries followed by that with respect to entries of similar resolution.

The Analysed column shows the number of residues for which the backbone conformation was analysed, and the total number of residues.

Mol	Chain	Analysed	Favoured	Allowed	Outliers	Percentiles	
1	A	428/543 (79%)	287 (67%)	96 (22%)	45 (10%)	0	3
2	B	67/121 (55%)	36 (54%)	24 (36%)	7 (10%)	0	3
All	All	495/664 (74%)	323 (65%)	120 (24%)	52 (10%)	0	3

All (52) Ramachandran outliers are listed below:

Mol	Chain	Res	Type
1	A	26	HIS
1	A	120	ASP
1	A	122	ASN
1	A	152	VAL
1	A	153	ALA
1	A	159	ASP
1	A	172	ALA
1	A	1121	LEU
1	A	1132	THR
1	A	1135	ALA
1	A	1204	ASN
2	B	26	LEU
2	B	93	ILE
1	A	22	ASN
1	A	58	ARG
1	A	112	LYS
1	A	147	PRO
1	A	983	ASP
1	A	1013	ALA
1	A	1024	ASP
1	A	1128	GLY
1	A	1136	ILE
1	A	1163	GLN
1	A	1192	GLN
1	A	1193	VAL
2	B	28	SER
2	B	43	ILE
2	B	101	SER
1	A	121	ARG
1	A	123	VAL
1	A	150	LYS
1	A	186	MET
1	A	190	GLU
1	A	224	GLU
1	A	1118	ASN
1	A	1137	ALA
1	A	1177	LYS
2	B	68	LEU
1	A	51	ASP
1	A	111	LEU
1	A	179	LEU
1	A	204	ASN
1	A	1134	CYS

Continued on next page...

Continued from previous page...

Mol	Chain	Res	Type
1	A	1155	GLU
1	A	1042	ASP
1	A	1162	LYS
1	A	31	ILE
1	A	56	LEU
1	A	135	ALA
2	B	92	ASP
1	A	63	GLY
1	A	1133	VAL

5.3.2 Protein sidechains ⓘ

In the following table, the Percentiles column shows the percent sidechain outliers of the chain as a percentile score with respect to all X-ray entries followed by that with respect to entries of similar resolution.

The Analysed column shows the number of residues for which the sidechain conformation was analysed, and the total number of residues.

Mol	Chain	Analysed	Rotameric	Outliers	Percentiles	
1	A	392/488 (80%)	390 (100%)	2 (0%)	88	93
2	B	61/107 (57%)	59 (97%)	2 (3%)	38	66
All	All	453/595 (76%)	449 (99%)	4 (1%)	78	87

All (4) residues with a non-rotameric sidechain are listed below:

Mol	Chain	Res	Type
1	A	156	ASN
1	A	246	MET
2	B	30	MET
2	B	39	ILE

Some sidechains can be flipped to improve hydrogen bonding and reduce clashes. All (11) such sidechains are listed below:

Mol	Chain	Res	Type
1	A	27	GLN
1	A	62	GLN
1	A	66	HIS
1	A	144	ASN
1	A	148	GLN

Continued on next page...

Continued from previous page...

Mol	Chain	Res	Type
1	A	156	ASN
1	A	195	GLN
1	A	226	ASN
1	A	1120	GLN
1	A	1143	GLN
1	A	1180	GLN

5.3.3 RNA ⓘ

There are no RNA molecules in this entry.

5.4 Non-standard residues in protein, DNA, RNA chains ⓘ

There are no non-standard protein/DNA/RNA residues in this entry.

5.5 Carbohydrates ⓘ

There are no carbohydrates in this entry.

5.6 Ligand geometry ⓘ

Of 2 ligands modelled in this entry, 1 is monoatomic - leaving 1 for Mogul analysis.

In the following table, the Counts columns list the number of bonds (or angles) for which Mogul statistics could be retrieved, the number of bonds (or angles) that are observed in the model and the number of bonds (or angles) that are defined in the Chemical Component Dictionary. The Link column lists molecule types, if any, to which the group is linked. The Z score for a bond length (or angle) is the number of standard deviations the observed value is removed from the expected value. A bond length (or angle) with $|Z| > 2$ is considered an outlier worth inspection. RMSZ is the root-mean-square of all Z scores of the bond lengths (or angles).

Mol	Type	Chain	Res	Link	Bond lengths			Bond angles		
					Counts	RMSZ	$\# Z > 2$	Counts	RMSZ	$\# Z > 2$
4	AGS	A	9999	3	26,33,33	1.89	5 (19%)	26,52,52	2.09	5 (19%)

In the following table, the Chirals column lists the number of chiral outliers, the number of chiral centers analysed, the number of these observed in the model and the number defined in the Chemical Component Dictionary. Similar counts are reported in the Torsion and Rings columns. '-' means no outliers of that kind were identified.

Mol	Type	Chain	Res	Link	Chirals	Torsions	Rings
4	AGS	A	9999	3	-	6/17/38/38	0/3/3/3

All (5) bond length outliers are listed below:

Mol	Chain	Res	Type	Atoms	Z	Observed(Å)	Ideal(Å)
4	A	9999	AGS	PG-S1G	7.38	2.06	1.90
4	A	9999	AGS	C5-C4	2.83	1.48	1.40
4	A	9999	AGS	PG-O2G	-2.44	1.47	1.54
4	A	9999	AGS	PG-O3G	2.29	1.62	1.54
4	A	9999	AGS	C2-N3	2.09	1.35	1.32

All (5) bond angle outliers are listed below:

Mol	Chain	Res	Type	Atoms	Z	Observed(°)	Ideal(°)
4	A	9999	AGS	PA-O3A-PB	-7.78	106.14	132.83
4	A	9999	AGS	N3-C2-N1	-3.26	123.59	128.68
4	A	9999	AGS	C3'-C2'-C1'	3.23	105.84	100.98
4	A	9999	AGS	C4-C5-N7	-2.88	106.40	109.40
4	A	9999	AGS	O3G-PG-O3B	2.05	111.50	104.64

There are no chirality outliers.

All (6) torsion outliers are listed below:

Mol	Chain	Res	Type	Atoms
4	A	9999	AGS	PB-O3B-PG-O2G
4	A	9999	AGS	PB-O3B-PG-O3G
4	A	9999	AGS	C5'-O5'-PA-O2A
4	A	9999	AGS	C5'-O5'-PA-O3A
4	A	9999	AGS	C3'-C4'-C5'-O5'
4	A	9999	AGS	PG-O3B-PB-O2B

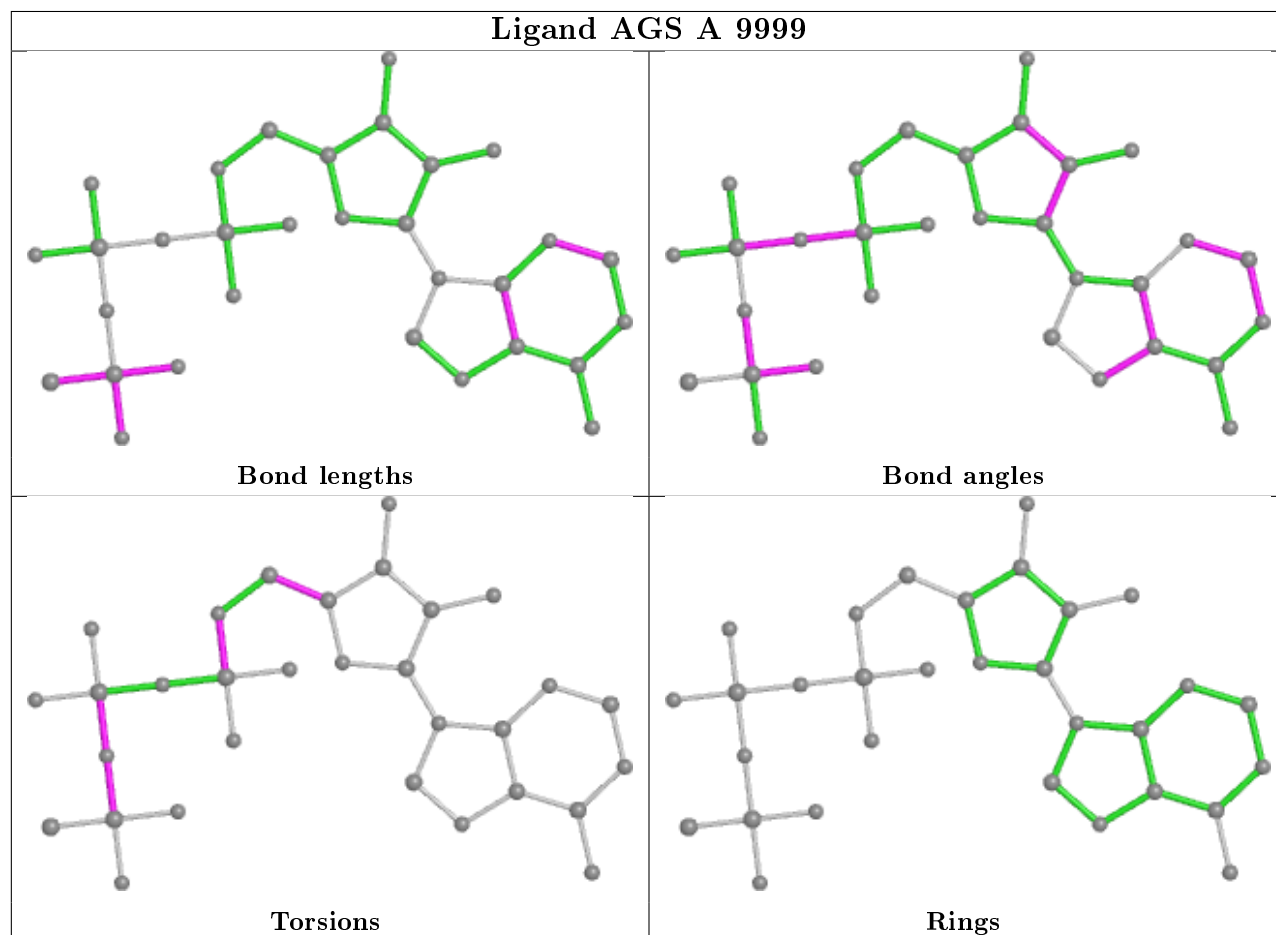
There are no ring outliers.

1 monomer is involved in 13 short contacts:

Mol	Chain	Res	Type	Clashes	Symm-Clashes
4	A	9999	AGS	13	0

The following is a two-dimensional graphical depiction of Mogul quality analysis of bond lengths, bond angles, torsion angles, and ring geometry for all instances of the Ligand of Interest. In addition, ligands with molecular weight > 250 and outliers as shown on the validation Tables will also be included. For torsion angles, if less than 5% of the Mogul distribution of torsion angles is within 10 degrees of the torsion angle in question, then that torsion angle is considered an outlier.

Any bond that is central to one or more torsion angles identified as an outlier by Mogul will be highlighted in the graph. For rings, the root-mean-square deviation (RMSD) between the ring in question and similar rings identified by Mogul is calculated over all ring torsion angles. If the average RMSD is greater than 60 degrees and the minimal RMSD between the ring in question and any Mogul-identified rings is also greater than 60 degrees, then that ring is considered an outlier. The outliers are highlighted in purple. The color gray indicates Mogul did not find sufficient equivalents in the CSD to analyse the geometry.



5.7 Other polymers [i](#)

There are no such residues in this entry.

5.8 Polymer linkage issues [i](#)

There are no chain breaks in this entry.

6 Fit of model and data

6.1 Protein, DNA and RNA chains

In the following table, the column labelled ‘#RSRZ> 2’ contains the number (and percentage) of RSRZ outliers, followed by percent RSRZ outliers for the chain as percentile scores relative to all X-ray entries and entries of similar resolution. The OWAB column contains the minimum, median, 95th percentile and maximum values of the occupancy-weighted average B-factor per residue. The column labelled ‘Q< 0.9’ lists the number of (and percentage) of residues with an average occupancy less than 0.9.

Mol	Chain	Analysed	<RSRZ>	#RSRZ>2	OWAB(Å ²)	Q<0.9
1	A	436/543 (80%)	0.48	39 (8%) 9 10	73, 177, 240, 307	0
2	B	71/121 (58%)	0.61	8 (11%) 5 5	116, 174, 280, 295	0
All	All	507/664 (76%)	0.50	47 (9%) 8 9	73, 176, 249, 307	0

All (47) RSRZ outliers are listed below:

Mol	Chain	Res	Type	RSRZ
1	A	111	LEU	7.4
1	A	235	TYR	5.8
2	B	47	ALA	5.1
1	A	29	VAL	4.3
1	A	112	LYS	4.1
1	A	19	ILE	4.0
2	B	65	TYR	4.0
1	A	130	ARG	4.0
1	A	232	PHE	3.9
1	A	5	ARG	3.6
1	A	2	TYR	3.4
1	A	1190	MET	3.4
1	A	24	SER	3.4
1	A	106	ARG	3.3
1	A	231	GLN	3.2
1	A	65	ILE	3.2
1	A	30	ILE	3.2
1	A	1182	ILE	3.2
2	B	50	ILE	2.9
1	A	1067	LEU	2.9
1	A	1118	ASN	2.8
1	A	1210	ILE	2.7
1	A	1198	PHE	2.7
1	A	1209	VAL	2.6

Continued on next page...

Continued from previous page...

Mol	Chain	Res	Type	RSRZ
1	A	74	MET	2.5
1	A	116	TYR	2.5
1	A	41	PHE	2.5
2	B	86	ALA	2.4
2	B	66	ILE	2.4
1	A	1029	LEU	2.4
1	A	78	VAL	2.3
1	A	21	ASP	2.3
1	A	161	GLU	2.3
1	A	17	GLU	2.3
1	A	238	GLU	2.2
1	A	31	ILE	2.2
1	A	75	SER	2.2
2	B	46	SER	2.2
1	A	1108	SER	2.2
1	A	1113	PHE	2.2
2	B	60	SER	2.2
1	A	994	VAL	2.2
1	A	158	LYS	2.1
2	B	90	LEU	2.1
1	A	45	ILE	2.0
1	A	977	LEU	2.0
1	A	27	GLN	2.0

6.2 Non-standard residues in protein, DNA, RNA chains [i](#)

There are no non-standard protein/DNA/RNA residues in this entry.

6.3 Carbohydrates [i](#)

There are no carbohydrates in this entry.

6.4 Ligands [i](#)

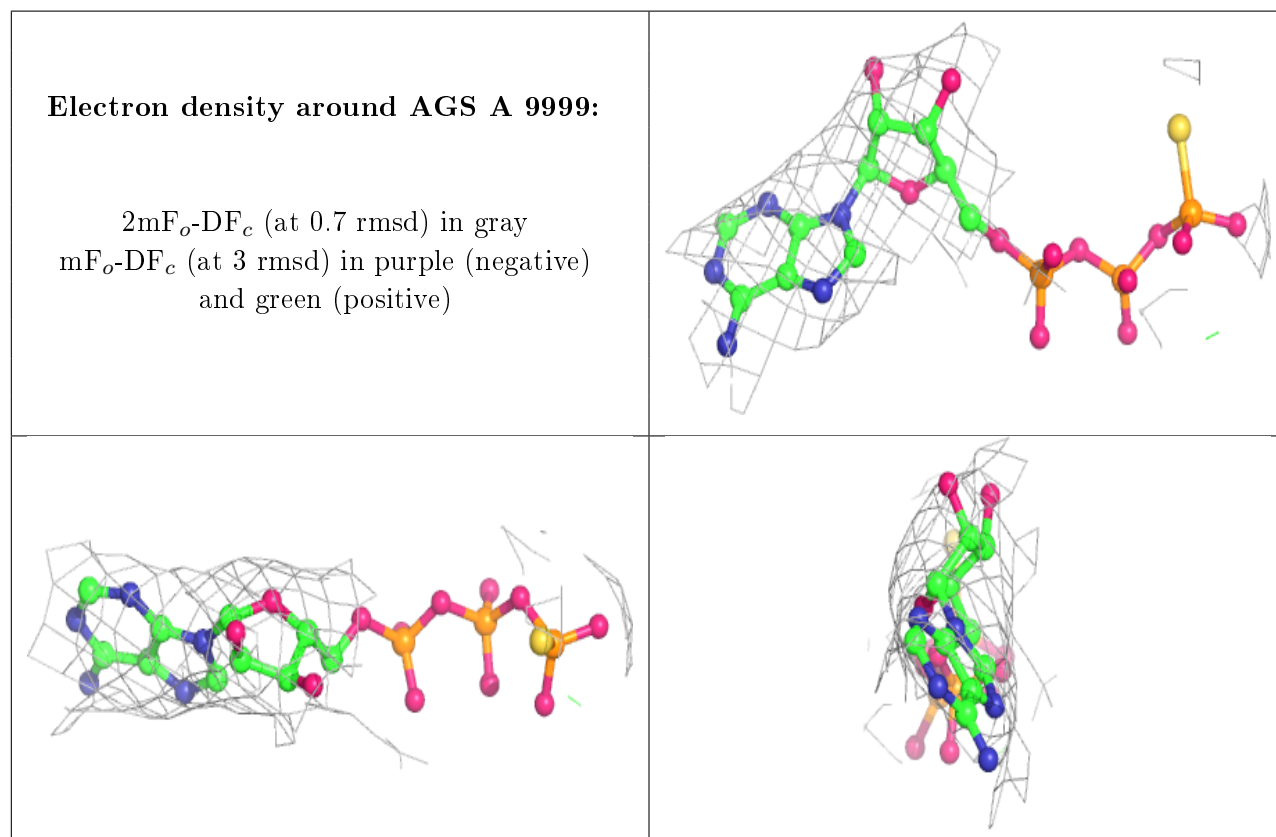
In the following table, the Atoms column lists the number of modelled atoms in the group and the number defined in the chemical component dictionary. The B-factors column lists the minimum, median, 95th percentile and maximum values of B factors of atoms in the group. The column labelled 'Q< 0.9' lists the number of atoms with occupancy less than 0.9.

Continued on next page...

Continued from previous page...

Mol	Type	Chain	Res	Atoms	RSCC	RSR	B-factors(\AA^2)	Q<0.9
4	AGS	A	9999	31/31	0.96	0.23	114,148,160,166	0
3	MG	A	8999	1/1	0.96	0.52	118,118,118,118	0

The following is a graphical depiction of the model fit to experimental electron density of all instances of the Ligand of Interest. In addition, ligands with molecular weight > 250 and outliers as shown on the geometry validation Tables will also be included. Each fit is shown from different orientation to approximate a three-dimensional view.



6.5 Other polymers [i](#)

There are no such residues in this entry.