



# wwPDB X-ray Structure Validation Summary Report ⓘ

Jun 15, 2020 – 07:43 am BST

PDB ID : 4UXX  
Title : Structure of delta4-DgkA with AMPPCP in 9.9 MAG  
Authors : Li, D.; Vogeley, L.; Caffrey, M.  
Deposited on : 2014-08-27  
Resolution : 2.70 Å(reported)

This is a wwPDB X-ray Structure Validation Summary Report for a publicly released PDB entry.

We welcome your comments at [validation@mail.wwpdb.org](mailto:validation@mail.wwpdb.org)

A user guide is available at

<https://www.wwpdb.org/validation/2017/XrayValidationReportHelp>

with specific help available everywhere you see the ⓘ symbol.

---

The following versions of software and data (see [references ⓘ](#)) were used in the production of this report:

MolProbity : 4.02b-467  
Mogul : 1.8.5 (274361), CSD as541be (2020)  
Xtriage (Phenix) : 1.13  
EDS : 2.11  
buster-report : 1.1.7 (2018)  
Percentile statistics : 20191225.v01 (using entries in the PDB archive December 25th 2019)  
Refmac : 5.8.0158  
CCP4 : 7.0.044 (Gargrove)  
Ideal geometry (proteins) : Engh & Huber (2001)  
Ideal geometry (DNA, RNA) : Parkinson et al. (1996)  
Validation Pipeline (wwPDB-VP) : 2.11

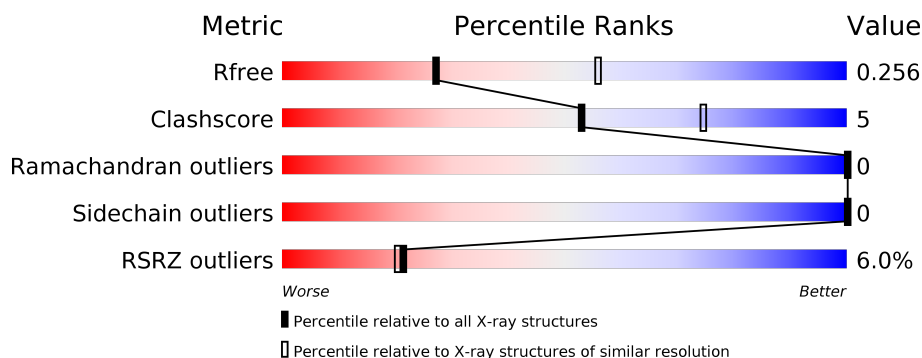
# 1 Overall quality at a glance

The following experimental techniques were used to determine the structure:

## *X-RAY DIFFRACTION*

The reported resolution of this entry is 2.70 Å.

Percentile scores (ranging between 0-100) for global validation metrics of the entry are shown in the following graphic. The table shows the number of entries on which the scores are based.



Metric	Whole archive (#Entries)	Similar resolution (#Entries, resolution range(Å))
$R_{free}$	130704	2808 (2.70-2.70)
Clashscore	141614	3122 (2.70-2.70)
Ramachandran outliers	138981	3069 (2.70-2.70)
Sidechain outliers	138945	3069 (2.70-2.70)
RSRZ outliers	127900	2737 (2.70-2.70)

The table below summarises the geometric issues observed across the polymeric chains and their fit to the electron density. The red, orange, yellow and green segments on the lower bar indicate the fraction of residues that contain outliers for  $\geq 3$ , 2, 1 and 0 types of geometric quality criteria respectively. A grey segment represents the fraction of residues that are not modelled. The numeric value for each fraction is indicated below the corresponding segment, with a dot representing fractions  $\leq 5\%$ . The upper red bar (where present) indicates the fraction of residues that have poor fit to the electron density. The numeric value is given above the bar.

Mol	Chain	Length	Quality of chain
1	A	130	<div> <div>5%</div> <div> <div></div> <div>82%</div> <div>7%</div> <div>12%</div> </div> </div>
1	B	130	<div> <div>4%</div> <div> <div></div> <div>83%</div> <div>6%</div> <div>11%</div> </div> </div>
1	C	130	<div> <div>7%</div> <div> <div></div> <div>67%</div> <div>14%</div> <div>19%</div> </div> </div>

The following table lists non-polymeric compounds, carbohydrate monomers and non-standard residues in protein, DNA, RNA chains that are outliers for geometric or electron-density-fit criteria:

Mol	Type	Chain	Res	Chirality	Geometry	Clashes	Electron density
2	CL	A	1121	-	-	-	X
4	ACT	A	1123	-	-	-	X
4	ACT	B	1125	-	-	-	X
5	OLC	A	1124	-	-	-	X
5	OLC	A	1125	-	-	-	X
5	OLC	B	1124	-	-	-	X
5	OLC	C	1125	-	-	-	X
6	MPD	B	1122	-	-	-	X

## 2 Entry composition

There are 9 unique types of molecules in this entry. The entry contains 2804 atoms, of which 0 are hydrogens and 0 are deuteriums.

In the tables below, the ZeroOcc column contains the number of atoms modelled with zero occupancy, the AltConf column contains the number of residues with at least one atom in alternate conformation and the Trace column contains the number of residues modelled with at most 2 atoms.

- Molecule 1 is a protein called DIACYLGLYCEROL KINASE.

Mol	Chain	Residues	Atoms					ZeroOcc	AltConf	Trace
1	A	115	Total	C	N	O	S	0	0	1
			879	574	148	152	5			
1	B	116	Total	C	N	O	S	0	0	0
			887	578	149	155	5			
1	C	105	Total	C	N	O	S	0	1	0
			818	534	135	143	6			

There are 39 discrepancies between the modelled and reference sequences:

Chain	Residue	Modelled	Actual	Comment	Reference
A	-8	GLY	-	expression tag	UNP P0ABN1
A	-7	HIS	-	expression tag	UNP P0ABN1
A	-6	HIS	-	expression tag	UNP P0ABN1
A	-5	HIS	-	expression tag	UNP P0ABN1
A	-4	HIS	-	expression tag	UNP P0ABN1
A	-3	HIS	-	expression tag	UNP P0ABN1
A	-2	HIS	-	expression tag	UNP P0ABN1
A	-1	GLU	-	expression tag	UNP P0ABN1
A	0	LEU	-	expression tag	UNP P0ABN1
A	53	CYS	ILE	engineered mutation	UNP P0ABN1
A	70	LEU	ILE	engineered mutation	UNP P0ABN1
A	96	LEU	MET	engineered mutation	UNP P0ABN1
A	107	ASP	VAL	engineered mutation	UNP P0ABN1
B	-8	GLY	-	expression tag	UNP P0ABN1
B	-7	HIS	-	expression tag	UNP P0ABN1
B	-6	HIS	-	expression tag	UNP P0ABN1
B	-5	HIS	-	expression tag	UNP P0ABN1
B	-4	HIS	-	expression tag	UNP P0ABN1
B	-3	HIS	-	expression tag	UNP P0ABN1
B	-2	HIS	-	expression tag	UNP P0ABN1
B	-1	GLU	-	expression tag	UNP P0ABN1
B	0	LEU	-	expression tag	UNP P0ABN1
B	53	CYS	ILE	engineered mutation	UNP P0ABN1

*Continued on next page...*

*Continued from previous page...*

Chain	Residue	Modelled	Actual	Comment	Reference
B	70	LEU	ILE	engineered mutation	UNP P0ABN1
B	96	LEU	MET	engineered mutation	UNP P0ABN1
B	107	ASP	VAL	engineered mutation	UNP P0ABN1
C	-8	GLY	-	expression tag	UNP P0ABN1
C	-7	HIS	-	expression tag	UNP P0ABN1
C	-6	HIS	-	expression tag	UNP P0ABN1
C	-5	HIS	-	expression tag	UNP P0ABN1
C	-4	HIS	-	expression tag	UNP P0ABN1
C	-3	HIS	-	expression tag	UNP P0ABN1
C	-2	HIS	-	expression tag	UNP P0ABN1
C	-1	GLU	-	expression tag	UNP P0ABN1
C	0	LEU	-	expression tag	UNP P0ABN1
C	53	CYS	ILE	engineered mutation	UNP P0ABN1
C	70	LEU	ILE	engineered mutation	UNP P0ABN1
C	96	LEU	MET	engineered mutation	UNP P0ABN1
C	107	ASP	VAL	engineered mutation	UNP P0ABN1

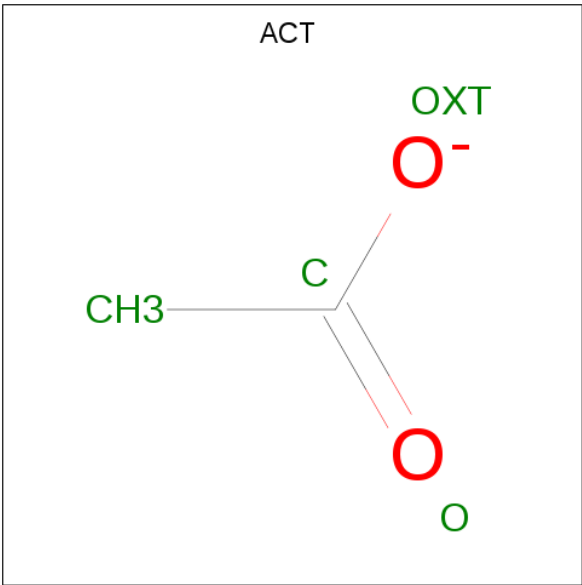
- Molecule 2 is CHLORIDE ION (three-letter code: CL) (formula: Cl).

Mol	Chain	Residues	Atoms	ZeroOcc	AltConf
2	A	1	Total Cl 1 1	0	0

- Molecule 3 is SODIUM ION (three-letter code: NA) (formula: Na).

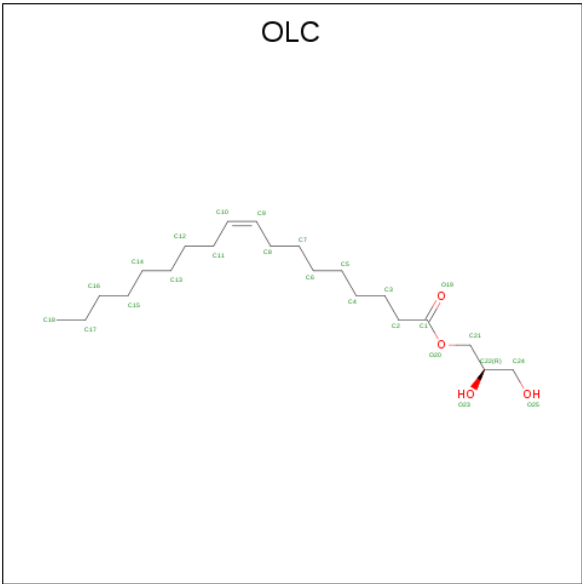
Mol	Chain	Residues	Atoms	ZeroOcc	AltConf
3	B	1	Total Na 1 1	0	0
3	A	1	Total Na 1 1	0	0
3	C	1	Total Na 1 1	0	0

- Molecule 4 is ACETATE ION (three-letter code: ACT) (formula: C<sub>2</sub>H<sub>3</sub>O<sub>2</sub>).



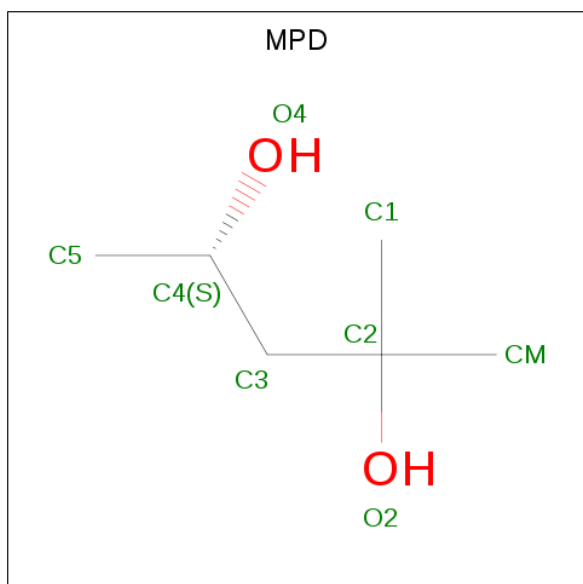
Mol	Chain	Residues	Atoms			ZeroOcc	AltConf
4	A	1	Total	C	O	0	0
			4	2	2		
4	A	1	Total	C	O	0	0
			4	2	2		
4	B	1	Total	C	O	0	0
			4	2	2		

- Molecule 5 is (2R)-2,3-dihydroxypropyl (9Z)-octadec-9-enoate (three-letter code: OLC) (formula: C<sub>21</sub>H<sub>40</sub>O<sub>4</sub>).



Mol	Chain	Residues	Atoms			ZeroOcc	AltConf
5	A	1	Total	C	O	0	0
			25	21	4		
5	A	1	Total	C	O	0	0
			25	21	4		
5	B	1	Total	C	O	0	0
			25	21	4		
5	B	1	Total	C	O	0	0
			25	21	4		
5	C	1	Total	C	O	0	0
			25	21	4		
5	C	1	Total	C	O	0	0
			25	21	4		

- Molecule 6 is (4S)-2-METHYL-2,4-PENTANEDIOL (three-letter code: MPD) (formula:  $C_6H_{14}O_2$ ).



Mol	Chain	Residues	Atoms			ZeroOcc	AltConf
6	B	1	Total	C	O	0	0
			8	6	2		

- Molecule 7 is ZINC ION (three-letter code: ZN) (formula:  $Zn$ ).

Mol	Chain	Residues	Atoms		ZeroOcc	AltConf
7	C	2	Total	Zn	0	0
			2	2		

- Molecule 8 is PHOSPHOMETHYLPHOSPHONIC ACID ADENYLATE ESTER (three-

# ACP

The chemical structure of Adenosine Cyclic Phosphate (ACP) is shown. It consists of a 2,6-dichloro-4-aminopyrimidin-5-yl group (labeled N1, N3, N7, C2, C3, C4, C5, C6, Cl, NH2) attached to a ribose sugar (labeled C1', C2', C3', C4', C5', O4', O5'). This ribose is linked via a 5',3'-cyclic phosphate (labeled O5', O3', P1, O1A, O1B) to another ribose sugar (labeled C1'', C2'', C3'', C4'', C5'', O4'', O5''). This second ribose is linked via a 5',3'-cyclic phosphate (labeled O5'', O3'', P2, O2A, O2B) to a third ribose sugar (labeled C1''', C2''', C3''', C4''', C5''', O4''', O5'''). The structure is labeled with atom names and numbers.

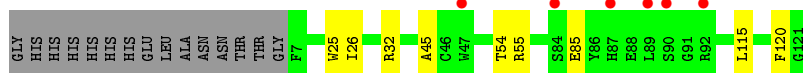
- Molecule 9 is water.

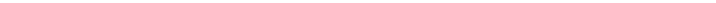
Mol	Chain	Residues	Atoms	ZeroOcc	AltConf
9	A	6	Total O 6 6	0	0
9	B	3	Total O 3 3	0	0
9	C	4	Total O 4 4	0	0

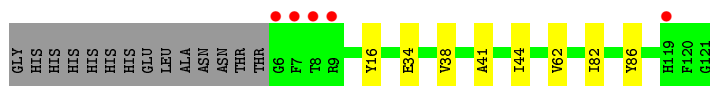




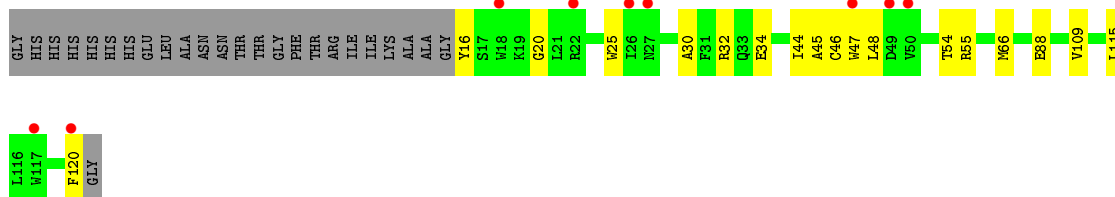
- Molecule 1: DIACYLGLYCEROL KINASE



Chain B: 



Chain C:  7% 67% 14% 19%



## 4 Data and refinement statistics

Property	Value	Source
Space group	P 31 2 1	Depositor
Cell constants a, b, c, $\alpha$ , $\beta$ , $\gamma$	72.94Å 72.94Å 195.76Å 90.00° 90.00° 120.00°	Depositor
Resolution (Å)	53.08 – 2.70 53.07 – 2.70	Depositor EDS
% Data completeness (in resolution range)	99.2 (53.08-2.70) 99.3 (53.07-2.70)	Depositor EDS
$R_{merge}$	0.12	Depositor
$R_{sym}$	(Not available)	Depositor
$\langle I/\sigma(I) \rangle$ <sup>1</sup>	1.66 (at 2.69Å)	Xtriage
Refinement program	PHENIX (PHENIX.REFINE)	Depositor
R, $R_{free}$	0.219 , 0.258 0.230 , 0.256	Depositor DCC
$R_{free}$ test set	850 reflections (4.95%)	wwPDB-VP
Wilson B-factor (Å <sup>2</sup> )	68.7	Xtriage
Anisotropy	0.365	Xtriage
Bulk solvent $k_{sol}$ (e/Å <sup>3</sup> ), $B_{sol}$ (Å <sup>2</sup> )	0.31 , 73.9	EDS
L-test for twinning <sup>2</sup>	$\langle  L  \rangle = 0.49$ , $\langle L^2 \rangle = 0.33$	Xtriage
Estimated twinning fraction	0.042 for -h,-k,l	Xtriage
$F_o, F_c$ correlation	0.93	EDS
Total number of atoms	2804	wwPDB-VP
Average B, all atoms (Å <sup>2</sup> )	92.0	wwPDB-VP

Xtriage's analysis on translational NCS is as follows: *The largest off-origin peak in the Patterson function is 5.52% of the height of the origin peak. No significant pseudotranslation is detected.*

<sup>1</sup>Intensities estimated from amplitudes.

<sup>2</sup>Theoretical values of  $\langle |L| \rangle$ ,  $\langle L^2 \rangle$  for acentric reflections are 0.5, 0.333 respectively for untwinned datasets, and 0.375, 0.2 for perfectly twinned datasets.

## 5 Model quality [i](#)

### 5.1 Standard geometry [i](#)

Bond lengths and bond angles in the following residue types are not validated in this section: ZN, OLC, CL, NA, MPD, ACP, ACT

The Z score for a bond length (or angle) is the number of standard deviations the observed value is removed from the expected value. A bond length (or angle) with  $|Z| > 5$  is considered an outlier worth inspection. RMSZ is the root-mean-square of all Z scores of the bond lengths (or angles).

Mol	Chain	Bond lengths		Bond angles	
		RMSZ	$\# Z  > 5$	RMSZ	$\# Z  > 5$
1	A	0.27	1/895 (0.1%)	0.45	0/1220
1	B	0.23	0/903	0.43	0/1228
1	C	0.24	0/833	0.46	0/1136
All	All	0.25	1/2631 (0.0%)	0.45	0/3584

All (1) bond length outliers are listed below:

Mol	Chain	Res	Type	Atoms	Z	Observed(Å)	Ideal(Å)
1	A	120	PHE	C-N	-5.30	1.23	1.33

There are no bond angle outliers.

There are no chirality outliers.

There are no planarity outliers.

### 5.2 Too-close contacts [i](#)

In the following table, the Non-H and H(model) columns list the number of non-hydrogen atoms and hydrogen atoms in the chain respectively. The H(added) column lists the number of hydrogen atoms added and optimized by MolProbity. The Clashes column lists the number of clashes within the asymmetric unit, whereas Symm-Clashes lists symmetry related clashes.

Mol	Chain	Non-H	H(model)	H(added)	Clashes	Symm-Clashes
1	A	879	0	912	7	0
1	B	887	0	918	8	0
1	C	818	0	843	15	0
2	A	1	0	0	1	0
3	A	1	0	0	0	0
3	B	1	0	0	0	0
3	C	1	0	0	0	0

*Continued on next page...*

*Continued from previous page...*

Mol	Chain	Non-H	H(model)	H(added)	Clashes	Symm-Clashes
4	A	8	0	6	0	0
4	B	4	0	3	0	0
5	A	50	0	80	3	0
5	B	50	0	80	2	0
5	C	50	0	80	2	0
6	B	8	0	14	0	0
7	C	2	0	0	0	0
8	C	31	0	14	3	0
9	A	6	0	0	0	0
9	B	3	0	0	0	0
9	C	4	0	0	0	0
All	All	2804	0	2950	31	0

The all-atom clashscore is defined as the number of clashes found per 1000 atoms (including hydrogen atoms). The all-atom clashscore for this structure is 5.

The worst 5 of 31 close contacts within the same asymmetric unit are listed below, sorted by their clash magnitude.

Atom-1	Atom-2	Interatomic distance (Å)	Clash overlap (Å)
1:A:32:ARG:NH2	2:A:1121:CL:CL	2.53	0.77
1:A:26:ILE:HD11	5:A:1124:OLC:H24A	1.80	0.64
1:C:44:ILE:O	1:C:48:LEU:HG	2.00	0.61
1:B:38:VAL:HG13	1:B:62:VAL:HG12	1.83	0.60
1:A:25:TRP:O	1:A:32:ARG:NH1	2.34	0.59

There are no symmetry-related clashes.

## 5.3 Torsion angles [i](#)

### 5.3.1 Protein backbone [i](#)

In the following table, the Percentiles column shows the percent Ramachandran outliers of the chain as a percentile score with respect to all X-ray entries followed by that with respect to entries of similar resolution.

The Analysed column shows the number of residues for which the backbone conformation was analysed, and the total number of residues.

Mol	Chain	Analysed	Favoured	Allowed	Outliers	Percentiles
1	A	113/130 (87%)	112 (99%)	1 (1%)	0	<b>100</b> <b>100</b>

*Continued on next page...*

*Continued from previous page...*

Mol	Chain	Analysed	Favoured	Allowed	Outliers	Percentiles	
1	B	114/130 (88%)	113 (99%)	1 (1%)	0	100	100
1	C	104/130 (80%)	103 (99%)	1 (1%)	0	100	100
All	All	331/390 (85%)	328 (99%)	3 (1%)	0	100	100

There are no Ramachandran outliers to report.

### 5.3.2 Protein sidechains [i](#)

In the following table, the Percentiles column shows the percent sidechain outliers of the chain as a percentile score with respect to all X-ray entries followed by that with respect to entries of similar resolution.

The Analysed column shows the number of residues for which the sidechain conformation was analysed, and the total number of residues.

Mol	Chain	Analysed	Rotameric	Outliers	Percentiles	
1	A	91/103 (88%)	91 (100%)	0	100	100
1	B	91/103 (88%)	91 (100%)	0	100	100
1	C	86/103 (84%)	86 (100%)	0	100	100
All	All	268/309 (87%)	268 (100%)	0	100	100

There are no protein residues with a non-rotameric sidechain to report.

Some sidechains can be flipped to improve hydrogen bonding and reduce clashes. All (1) such sidechains are listed below:

Mol	Chain	Res	Type
1	C	119	HIS

### 5.3.3 RNA [i](#)

There are no RNA molecules in this entry.

## 5.4 Non-standard residues in protein, DNA, RNA chains [i](#)

There are no non-standard protein/DNA/RNA residues in this entry.

## 5.5 Carbohydrates [i](#)

There are no carbohydrates in this entry.

## 5.6 Ligand geometry [i](#)

Of 17 ligands modelled in this entry, 6 are monoatomic - leaving 11 for Mogul analysis.

In the following table, the Counts columns list the number of bonds (or angles) for which Mogul statistics could be retrieved, the number of bonds (or angles) that are observed in the model and the number of bonds (or angles) that are defined in the Chemical Component Dictionary. The Link column lists molecule types, if any, to which the group is linked. The Z score for a bond length (or angle) is the number of standard deviations the observed value is removed from the expected value. A bond length (or angle) with  $|Z| > 2$  is considered an outlier worth inspection. RMSZ is the root-mean-square of all Z scores of the bond lengths (or angles).

Mol	Type	Chain	Res	Link	Bond lengths			Bond angles		
					Counts	RMSZ	$\# Z  > 2$	Counts	RMSZ	$\# Z  > 2$
5	OLC	C	1124	-	24,24,24	0.19	0	25,25,25	0.28	0
5	OLC	A	1124	-	24,24,24	0.26	0	25,25,25	0.20	0
6	MPD	B	1122	-	7,7,7	0.26	0	9,10,10	0.39	0
8	ACP	C	1123	7	27,33,33	0.70	0	32,52,52	0.83	2 (6%)
4	ACT	A	1123	3	1,3,3	0.68	0	0,3,3	0.00	-
5	OLC	A	1125	-	24,24,24	0.17	0	25,25,25	0.14	0
5	OLC	C	1125	-	24,24,24	0.20	0	25,25,25	0.21	0
4	ACT	B	1125	3	1,3,3	0.62	0	0,3,3	0.00	-
5	OLC	B	1123	-	24,24,24	0.17	0	25,25,25	0.24	0
5	OLC	B	1124	-	24,24,24	0.17	0	25,25,25	0.30	0
4	ACT	A	1126	-	1,3,3	0.63	0	0,3,3	0.00	-

In the following table, the Chirals column lists the number of chiral outliers, the number of chiral centers analysed, the number of these observed in the model and the number defined in the Chemical Component Dictionary. Similar counts are reported in the Torsion and Rings columns. '-' means no outliers of that kind were identified.

Mol	Type	Chain	Res	Link	Chirals	Torsions	Rings
5	OLC	C	1124	-	-	10/24/24/24	-
5	OLC	A	1124	-	-	9/24/24/24	-
8	ACP	C	1123	7	-	2/15/38/38	0/3/3/3
5	OLC	A	1125	-	-	8/24/24/24	-
5	OLC	C	1125	-	-	10/24/24/24	-
6	MPD	B	1122	-	-	5/5/5/5	-
5	OLC	B	1123	-	-	7/24/24/24	-

*Continued on next page...*

*Continued from previous page...*

Mol	Type	Chain	Res	Link	Chirals	Torsions	Rings
5	OLC	B	1124	-	-	6/24/24/24	-

There are no bond length outliers.

All (2) bond angle outliers are listed below:

Mol	Chain	Res	Type	Atoms	Z	Observed(°)	Ideal(°)
8	C	1123	ACP	O1B-PB-C3B	2.87	116.66	109.07
8	C	1123	ACP	C5-C6-N6	2.35	123.92	120.35

There are no chirality outliers.

5 of 57 torsion outliers are listed below:

Mol	Chain	Res	Type	Atoms
5	C	1124	OLC	C21-C22-C24-O25
5	C	1124	OLC	O20-C21-C22-C24
5	C	1124	OLC	O20-C21-C22-O23
5	A	1124	OLC	O20-C21-C22-C24
6	B	1122	MPD	O2-C2-C3-C4

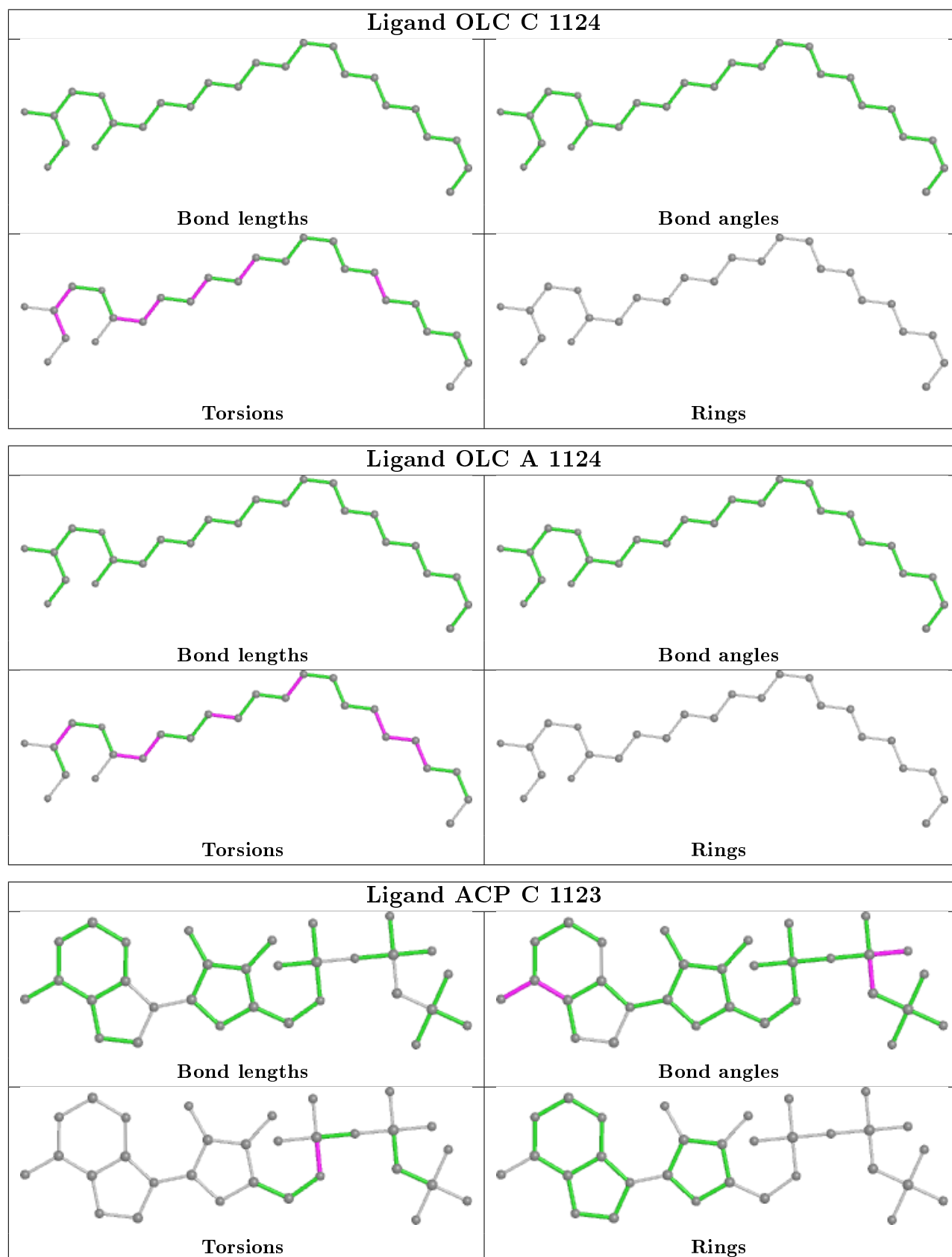
There are no ring outliers.

7 monomers are involved in 10 short contacts:

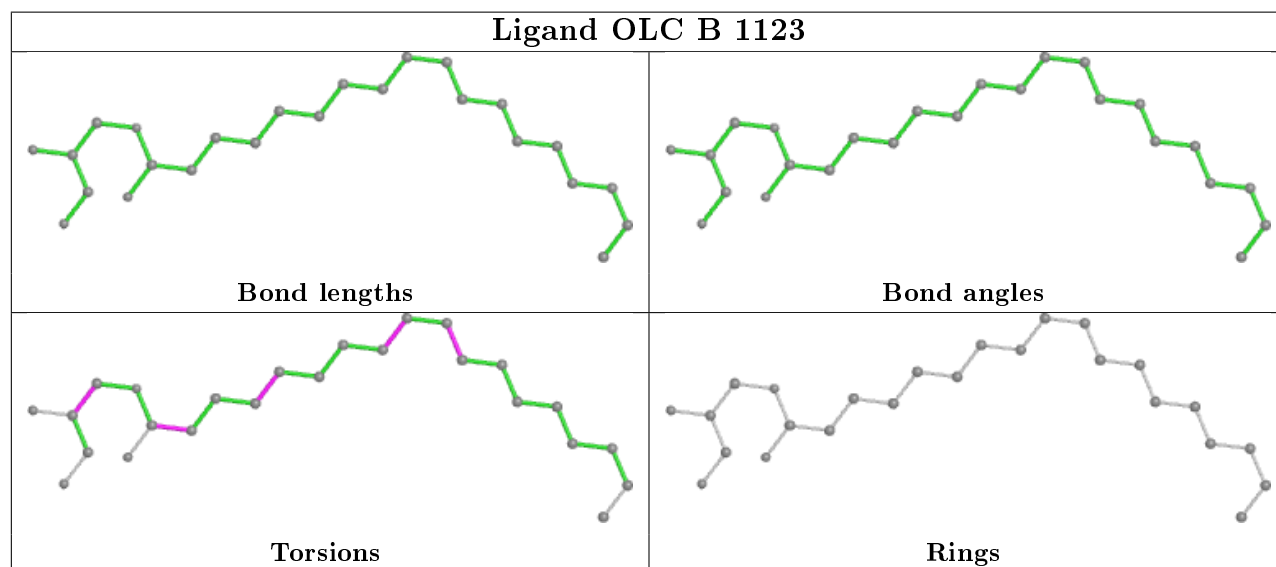
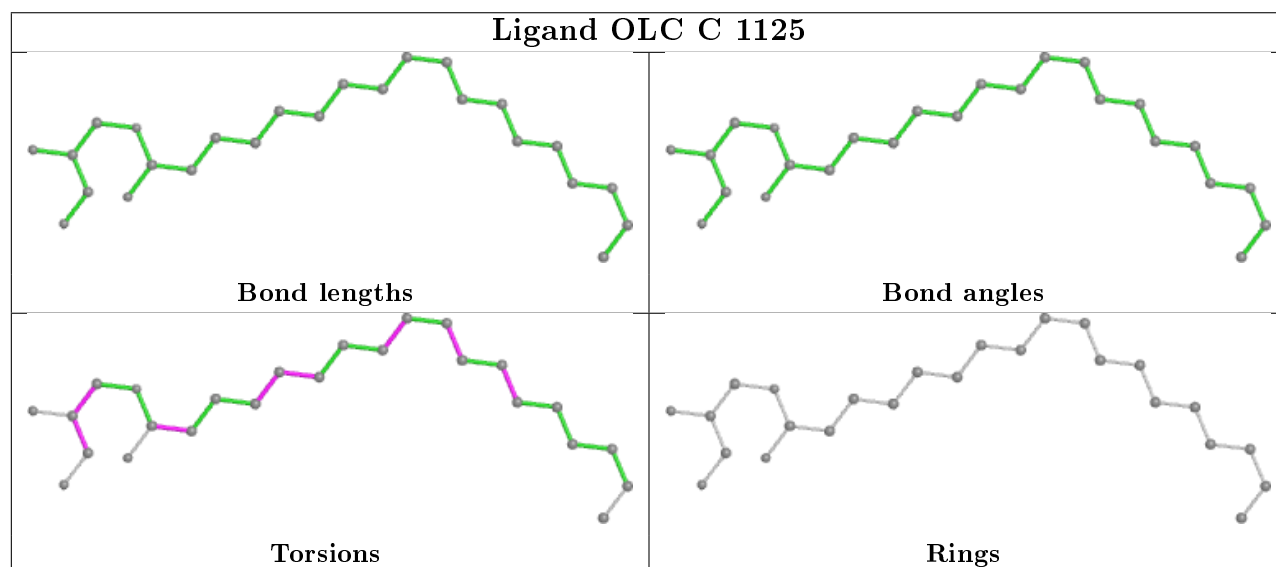
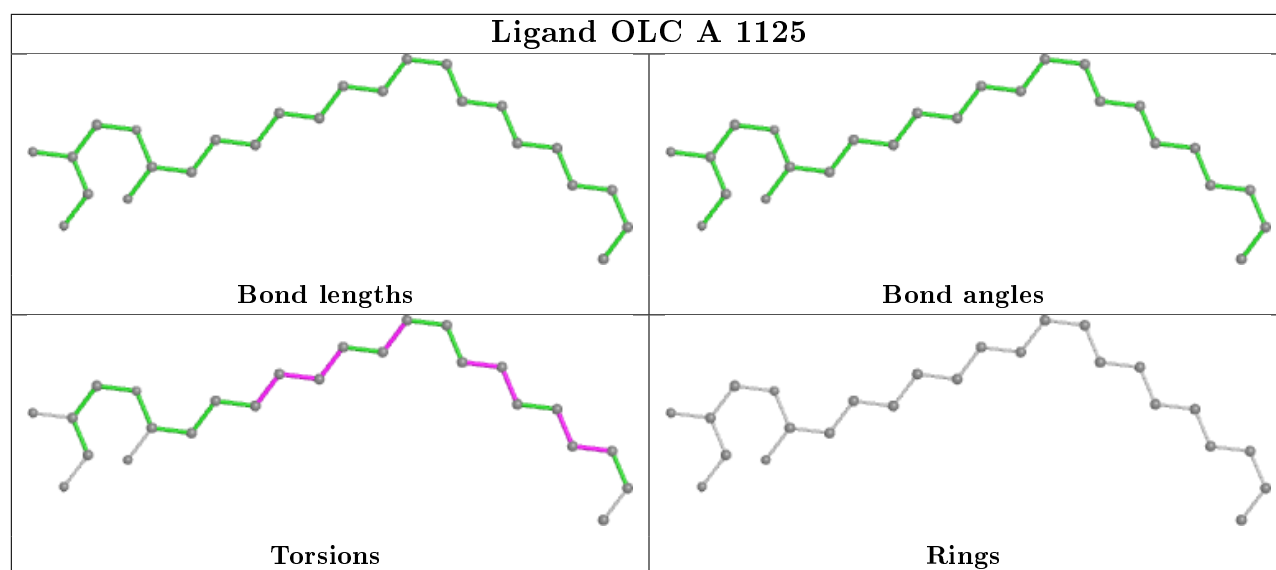
Mol	Chain	Res	Type	Clashes	Symm-Clashes
5	C	1124	OLC	1	0
5	A	1124	OLC	2	0
8	C	1123	ACP	3	0
5	A	1125	OLC	1	0
5	C	1125	OLC	1	0
5	B	1123	OLC	1	0
5	B	1124	OLC	1	0

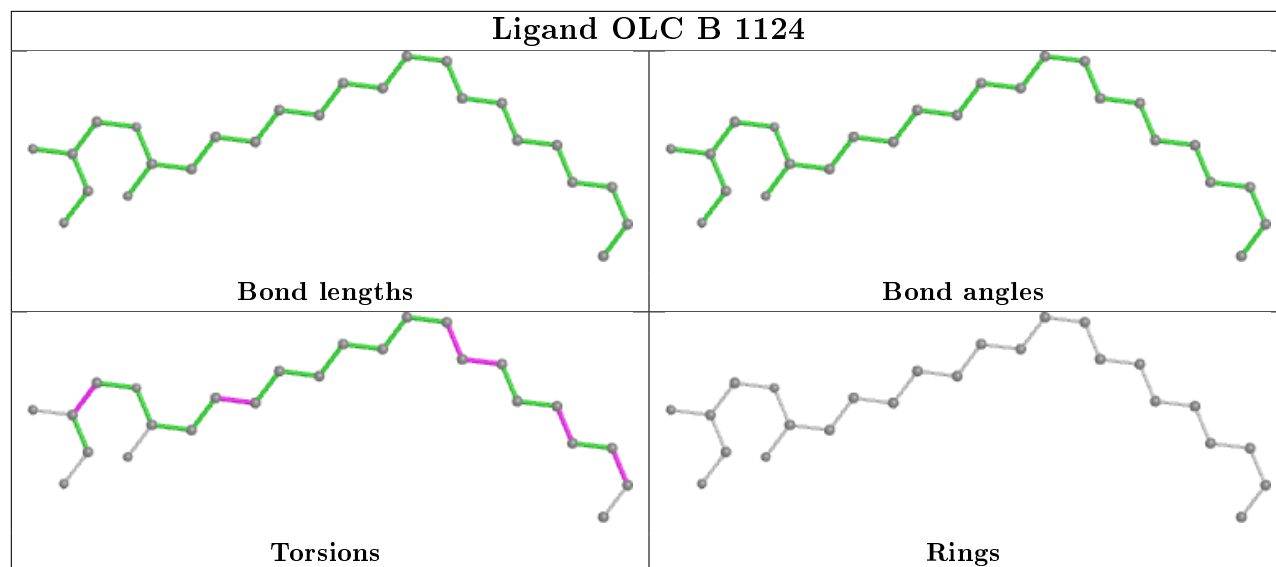
The following is a two-dimensional graphical depiction of Mogul quality analysis of bond lengths, bond angles, torsion angles, and ring geometry for all instances of the Ligand of Interest. In addition, ligands with molecular weight > 250 and outliers as shown on the validation Tables will also be included. For torsion angles, if less than 5% of the Mogul distribution of torsion angles is within 10 degrees of the torsion angle in question, then that torsion angle is considered an outlier. Any bond that is central to one or more torsion angles identified as an outlier by Mogul will be highlighted in the graph. For rings, the root-mean-square deviation (RMSD) between the ring in question and similar rings identified by Mogul is calculated over all ring torsion angles. If the average RMSD is greater than 60 degrees and the minimal RMSD between the ring in question and any Mogul-identified rings is also greater than 60 degrees, then that ring is considered an outlier.

The outliers are highlighted in purple. The color gray indicates Mogul did not find sufficient equivalents in the CSD to analyse the geometry.









## 5.7 Other polymers [i](#)

There are no such residues in this entry.

## 5.8 Polymer linkage issues [i](#)

There are no chain breaks in this entry.

## 6 Fit of model and data [i](#)

### 6.1 Protein, DNA and RNA chains [i](#)

In the following table, the column labelled ‘#RSRZ> 2’ contains the number (and percentage) of RSRZ outliers, followed by percent RSRZ outliers for the chain as percentile scores relative to all X-ray entries and entries of similar resolution. The OWAB column contains the minimum, median, 95<sup>th</sup> percentile and maximum values of the occupancy-weighted average B-factor per residue. The column labelled ‘Q< 0.9’ lists the number of (and percentage) of residues with an average occupancy less than 0.9.

Mol	Chain	Analysed	<RSRZ>	#RSRZ>2		OWAB(Å <sup>2</sup> )	Q<0.9
1	A	115/130 (88%)	0.30	6 (5%)	27 25	54, 77, 140, 189	0
1	B	116/130 (89%)	0.24	5 (4%)	35 33	54, 80, 136, 166	0
1	C	105/130 (80%)	0.17	9 (8%)	10 8	58, 88, 150, 209	0
All	All	336/390 (86%)	0.24	20 (5%)	21 20	54, 81, 145, 209	0

The worst 5 of 20 RSRZ outliers are listed below:

Mol	Chain	Res	Type	RSRZ
1	A	89	LEU	7.0
1	C	120	PHE	6.7
1	A	92	ARG	5.6
1	B	7	PHE	4.6
1	B	8	THR	3.7

### 6.2 Non-standard residues in protein, DNA, RNA chains [i](#)

There are no non-standard protein/DNA/RNA residues in this entry.

### 6.3 Carbohydrates [i](#)

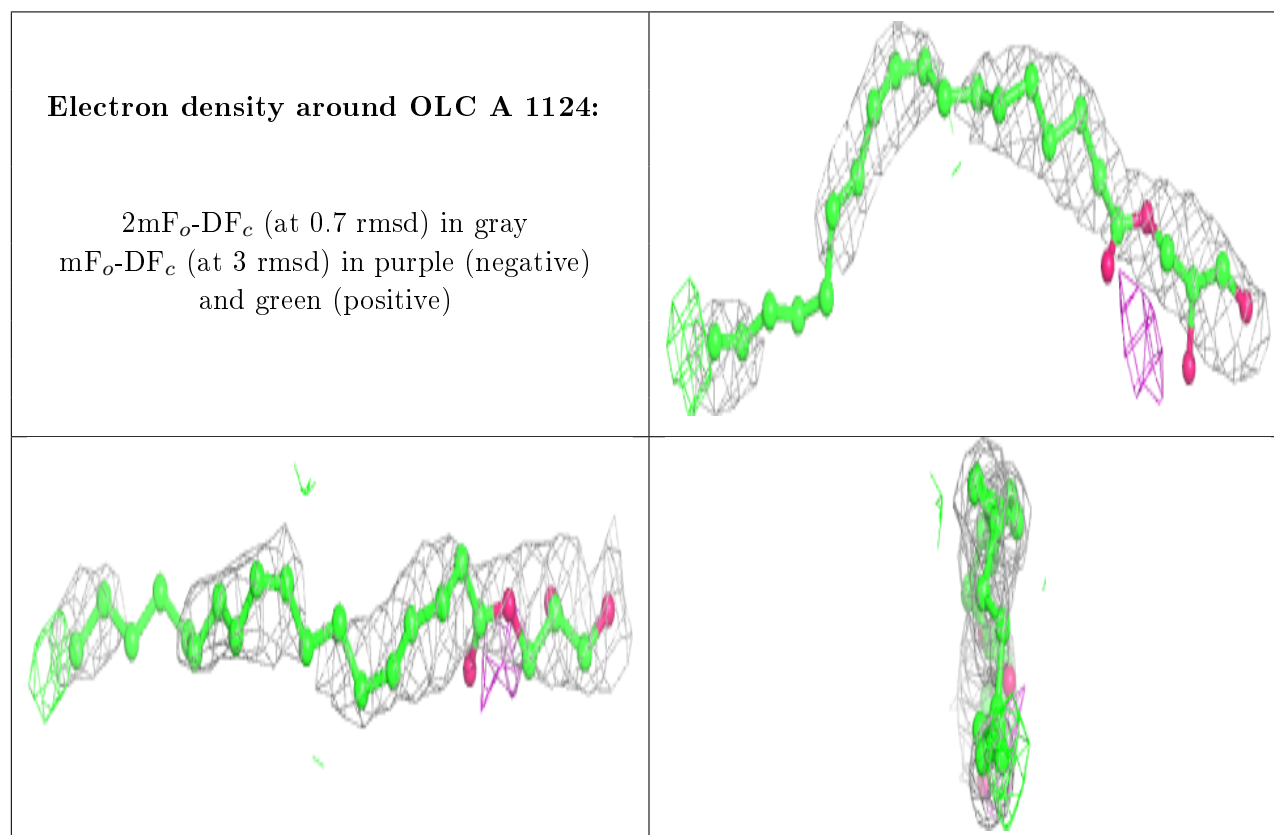
There are no carbohydrates in this entry.

### 6.4 Ligands [i](#)

In the following table, the Atoms column lists the number of modelled atoms in the group and the number defined in the chemical component dictionary. The B-factors column lists the minimum, median, 95<sup>th</sup> percentile and maximum values of B factors of atoms in the group. The column labelled ‘Q< 0.9’ lists the number of atoms with occupancy less than 0.9.

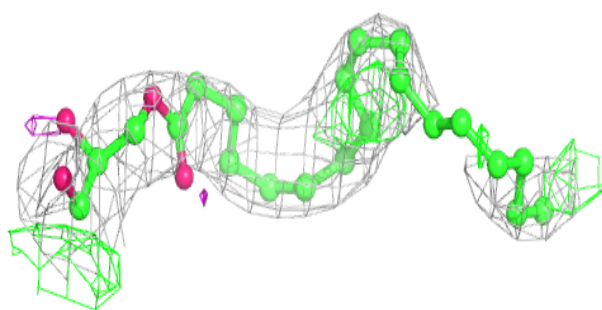
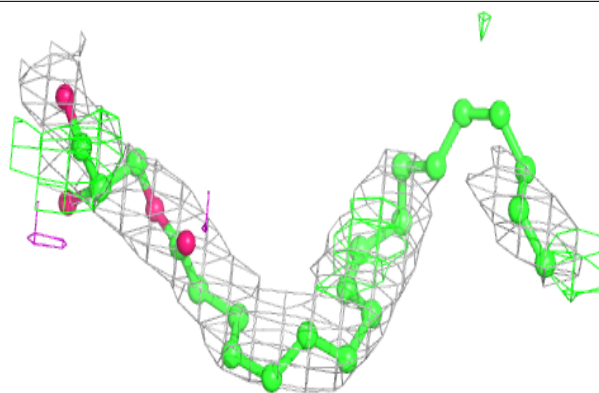
Mol	Type	Chain	Res	Atoms	RSCC	RSR	B-factors( $\text{\AA}^2$ )	Q<0.9
3	NA	C	1126	1/1	0.57	0.32	88,88,88,88	1
2	CL	A	1121	1/1	0.58	0.47	179,179,179,179	0
7	ZN	C	1121	1/1	0.66	0.06	175,175,175,175	1
6	MPD	B	1122	8/8	0.67	0.69	123,136,147,151	0
5	OLC	A	1124	25/25	0.67	0.47	77,106,133,146	0
3	NA	A	1122	1/1	0.68	0.15	164,164,164,164	0
5	OLC	A	1125	25/25	0.69	0.42	93,107,131,142	0
5	OLC	C	1125	25/25	0.73	0.63	95,122,140,151	0
4	ACT	B	1125	4/4	0.73	0.56	121,132,133,140	0
5	OLC	B	1124	25/25	0.73	0.40	70,96,119,120	0
7	ZN	C	1122	1/1	0.76	0.06	108,108,108,108	1
5	OLC	B	1123	25/25	0.77	0.35	69,97,104,105	0
4	ACT	A	1123	4/4	0.77	0.40	152,155,155,157	0
3	NA	B	1126	1/1	0.83	0.19	139,139,139,139	0
4	ACT	A	1126	4/4	0.86	0.25	105,105,106,109	0
5	OLC	C	1124	25/25	0.87	0.48	90,122,136,140	0
8	ACP	C	1123	31/31	0.88	0.17	69,90,174,176	31

The following is a graphical depiction of the model fit to experimental electron density of all instances of the Ligand of Interest. In addition, ligands with molecular weight > 250 and outliers as shown on the geometry validation Tables will also be included. Each fit is shown from different orientation to approximate a three-dimensional view.

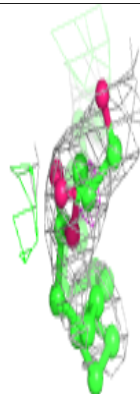
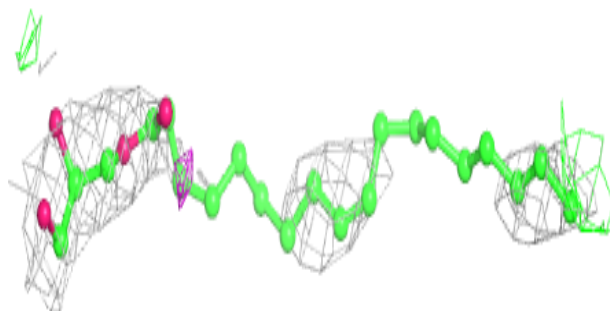
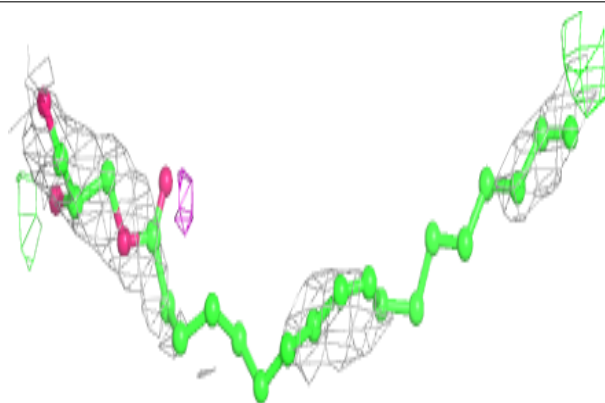


**Electron density around OLC A 1125:**

$2mF_o-DF_c$  (at 0.7 rmsd) in gray  
 $mF_o-DF_c$  (at 3 rmsd) in purple (negative)  
and green (positive)

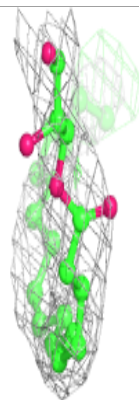
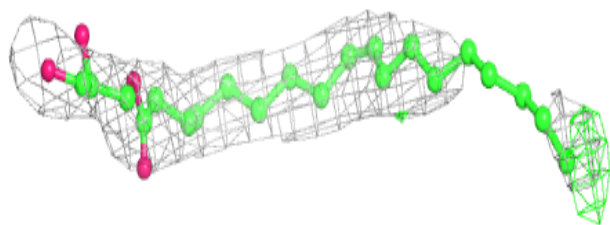
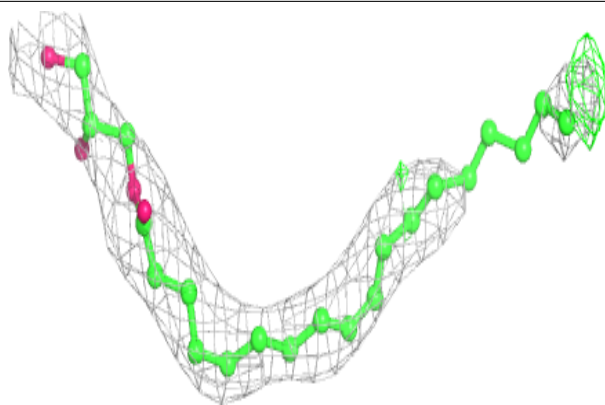
**Electron density around OLC C 1125:**

$2mF_o-DF_c$  (at 0.7 rmsd) in gray  
 $mF_o-DF_c$  (at 3 rmsd) in purple (negative)  
and green (positive)

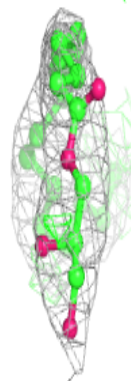
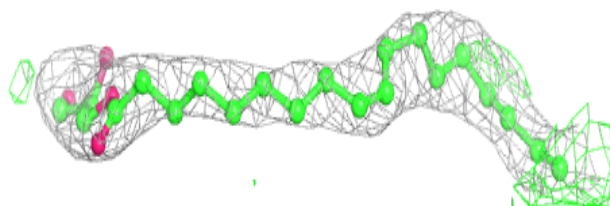
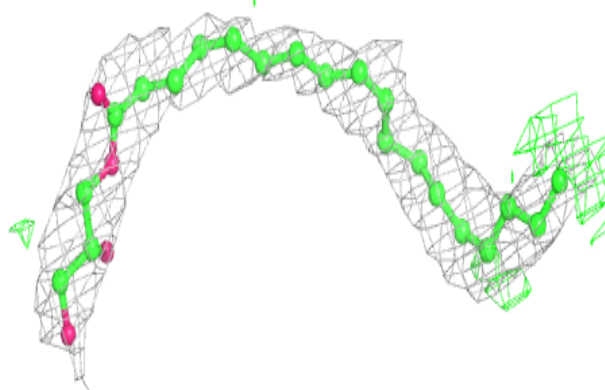


**Electron density around OLC B 1124:**

$2mF_o-DF_c$  (at 0.7 rmsd) in gray  
 $mF_o-DF_c$  (at 3 rmsd) in purple (negative)  
and green (positive)

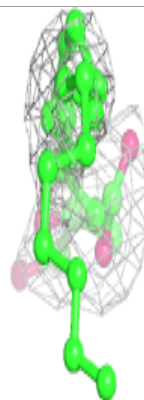
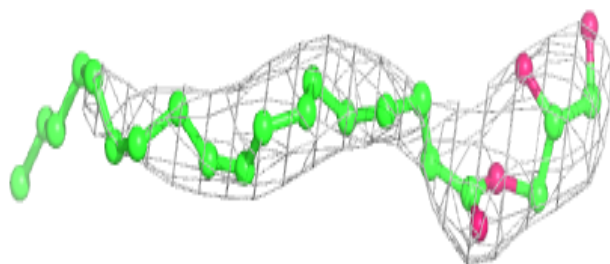
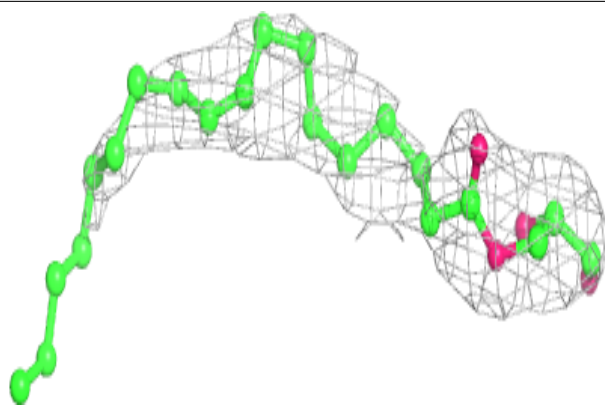
**Electron density around OLC B 1123:**

$2mF_o-DF_c$  (at 0.7 rmsd) in gray  
 $mF_o-DF_c$  (at 3 rmsd) in purple (negative)  
and green (positive)

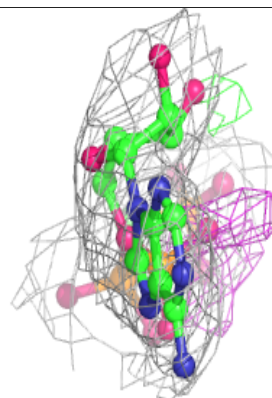
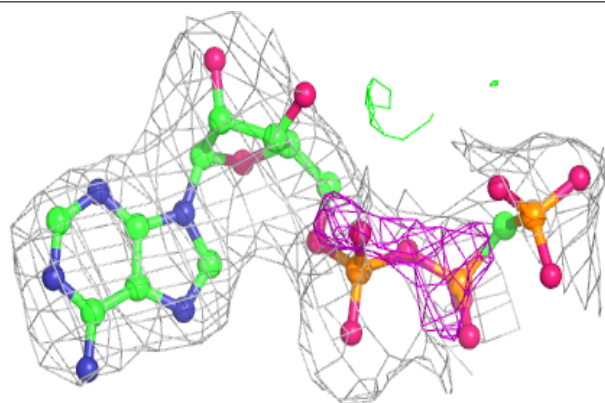


**Electron density around OLC C 1124:**

$2mF_o-DF_c$  (at 0.7 rmsd) in gray  
 $mF_o-DF_c$  (at 3 rmsd) in purple (negative)  
and green (positive)

**Electron density around ACP C 1123:**

$2mF_o-DF_c$  (at 0.7 rmsd) in gray  
 $mF_o-DF_c$  (at 3 rmsd) in purple (negative)  
and green (positive)



## 6.5 Other polymers [i](#)

There are no such residues in this entry.