



# Full wwPDB X-ray Structure Validation Report ⓘ

Aug 7, 2020 – 03:05 PM BST

PDB ID : 6UYF  
Title : Structure of Hepatitis C Virus Envelope Glycoprotein E2mc3-v1 redesigned core from genotype 6a bound to broadly neutralizing antibody AR3B  
Authors : Tzarum, N.; Wilson, I.A.; Zhu, J.  
Deposited on : 2019-11-13  
Resolution : 2.06 Å(reported)

This is a Full wwPDB X-ray Structure Validation Report for a publicly released PDB entry.

We welcome your comments at [validation@mail.wwpdb.org](mailto:validation@mail.wwpdb.org)

A user guide is available at

<https://www.wwpdb.org/validation/2017/XrayValidationReportHelp>

with specific help available everywhere you see the ⓘ symbol.

---

The following versions of software and data (see [references ⓘ](#)) were used in the production of this report:

MolProbity : 4.02b-467  
Mogul : 1.8.5 (274361), CSD as541be (2020)  
Xtriage (Phenix) : 1.13  
EDS : 2.13.1  
buster-report : 1.1.7 (2018)  
Percentile statistics : 20191225.v01 (using entries in the PDB archive December 25th 2019)  
Refmac : 5.8.0158  
CCP4 : 7.0.044 (Gargrove)  
Ideal geometry (proteins) : Engh & Huber (2001)  
Ideal geometry (DNA, RNA) : Parkinson et al. (1996)  
Validation Pipeline (wwPDB-VP) : 2.13.1

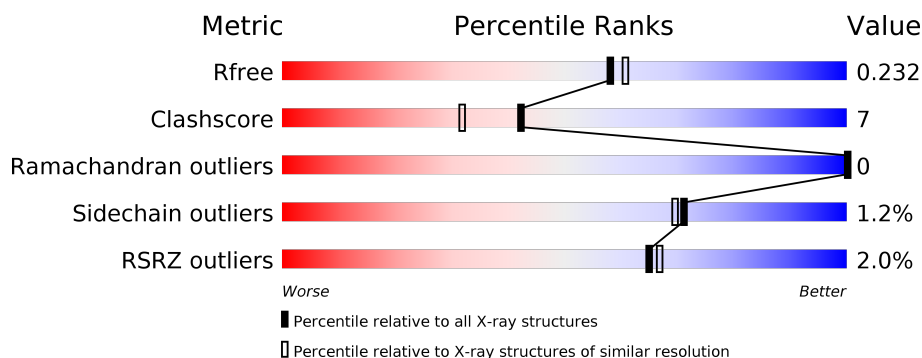
# 1 Overall quality at a glance

The following experimental techniques were used to determine the structure:

*X-RAY DIFFRACTION*

The reported resolution of this entry is 2.06 Å.

Percentile scores (ranging between 0-100) for global validation metrics of the entry are shown in the following graphic. The table shows the number of entries on which the scores are based.



Metric	Whole archive (#Entries)	Similar resolution (#Entries, resolution range(Å))
$R_{free}$	130704	2684 (2.08-2.04)
Clashscore	141614	2801 (2.08-2.04)
Ramachandran outliers	138981	2768 (2.08-2.04)
Sidechain outliers	138945	2768 (2.08-2.04)
RSRZ outliers	127900	2646 (2.08-2.04)

The table below summarises the geometric issues observed across the polymeric chains and their fit to the electron density. The red, orange, yellow and green segments on the lower bar indicate the fraction of residues that contain outliers for  $\geq 3$ , 2, 1 and 0 types of geometric quality criteria respectively. A grey segment represents the fraction of residues that are not modelled. The numeric value for each fraction is indicated below the corresponding segment, with a dot representing fractions  $\leq 5\%$ . The upper red bar (where present) indicates the fraction of residues that have poor fit to the electron density. The numeric value is given above the bar.

Mol	Chain	Length	Quality of chain
1	H	230	<div> <div style="width: 100%; height: 10px; background: linear-gradient(to right, red 1%, orange 1%, yellow 13%, green 81%, grey 5%);"></div> <div style="display: flex; justify-content: space-between; width: 100%;"> <span>1%</span> <span>81%</span> <span>13%</span> <span>5%</span> </div> </div>
2	L	215	<div> <div style="width: 100%; height: 10px; background: linear-gradient(to right, green 85%, yellow 14%);"></div> <div style="display: flex; justify-content: space-between; width: 100%;"> <span>85%</span> <span>14%</span> </div> </div>
3	E	177	<div> <div style="width: 100%; height: 10px; background: linear-gradient(to right, red 6%, orange 1%, yellow 14%, green 73%, grey 13%);"></div> <div style="display: flex; justify-content: space-between; width: 100%;"> <span>6%</span> <span>73%</span> <span>14%</span> <span>13%</span> </div> </div>
4	A	2	<div> <div style="width: 100%; height: 10px; background: linear-gradient(to right, green 100%);"></div> <div style="display: flex; justify-content: space-between; width: 100%;"> <span>100%</span> </div> </div>
4	B	2	<div> <div style="width: 100%; height: 10px; background: linear-gradient(to right, green 50%, yellow 50%);"></div> <div style="display: flex; justify-content: space-between; width: 100%;"> <span>50%</span> <span>50%</span> </div> </div>
5	C	4	<div> <div style="width: 100%; height: 10px; background: linear-gradient(to right, green 50%, yellow 50%);"></div> <div style="display: flex; justify-content: space-between; width: 100%;"> <span>50%</span> <span>50%</span> </div> </div>

The following table lists non-polymeric compounds, carbohydrate monomers and non-standard residues in protein, DNA, RNA chains that are outliers for geometric or electron-density-fit criteria:

Mol	Type	Chain	Res	Chirality	Geometry	Clashes	Electron density
5	MAN	C	4	-	-	-	X

## 2 Entry composition [i](#)

There are 7 unique types of molecules in this entry. The entry contains 4901 atoms, of which 0 are hydrogens and 0 are deuteriums.

In the tables below, the ZeroOcc column contains the number of atoms modelled with zero occupancy, the AltConf column contains the number of residues with at least one atom in alternate conformation and the Trace column contains the number of residues modelled with at most 2 atoms.

- Molecule 1 is a protein called Fab AR3B heavy chain.

Mol	Chain	Residues	Atoms					ZeroOcc	AltConf	Trace
1	H	218	Total	C	N	O	S	0	0	0
			1620	1032	268	314	6			

- Molecule 2 is a protein called Fab AR3B light chain.

Mol	Chain	Residues	Atoms					ZeroOcc	AltConf	Trace
2	L	214	Total	C	N	O	S	0	0	0
			1640	1022	278	336	4			

- Molecule 3 is a protein called Envelope glycoprotein E2.

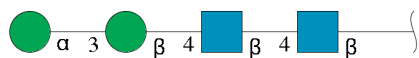
Mol	Chain	Residues	Atoms					ZeroOcc	AltConf	Trace
3	E	154	Total	C	N	O	S	0	0	0
			1215	776	205	221	13			

- Molecule 4 is an oligosaccharide called 2-acetamido-2-deoxy-beta-D-glucopyranose-(1-4)-2-acetamido-2-deoxy-beta-D-glucopyranose.



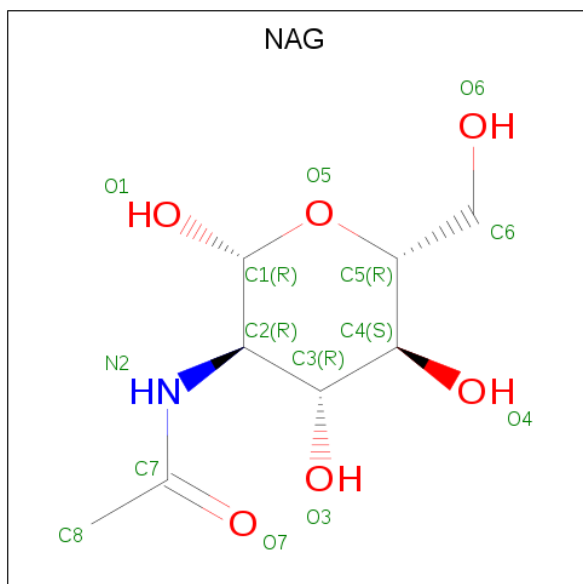
Mol	Chain	Residues	Atoms				ZeroOcc	AltConf	Trace
4	A	2	Total	C	N	O	0	0	0
			28	16	2	10			
4	B	2	Total	C	N	O	0	0	0
			28	16	2	10			

- Molecule 5 is an oligosaccharide called alpha-D-mannopyranose-(1-3)-beta-D-mannopyranose-(1-4)-2-acetamido-2-deoxy-beta-D-glucopyranose-(1-4)-2-acetamido-2-deoxy-beta-D-glucopyranose.



Mol	Chain	Residues	Atoms				ZeroOcc	AltConf	Trace
5	C	4	Total	C	N	O	0	0	0
			50	28	2	20			

- Molecule 6 is 2-acetamido-2-deoxy-beta-D-glucopyranose (three-letter code: NAG) (formula:  $C_8H_{15}NO_6$ ) (labeled as "Ligand of Interest" by author).



Mol	Chain	Residues	Atoms				ZeroOcc	AltConf
6	E	1	Total	C	N	O	0	0
			14	8	1	5		

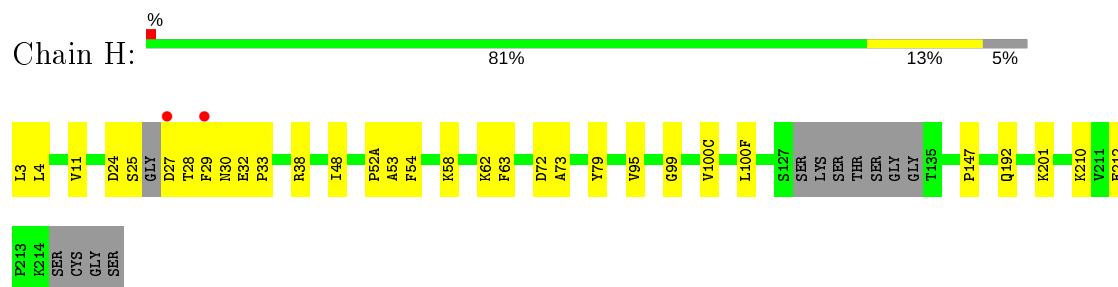
- Molecule 7 is water.

Mol	Chain	Residues	Atoms		ZeroOcc	AltConf
7	H	125	Total	O	0	0
			125	125		
7	L	136	Total	O	0	0
			136	136		
7	E	45	Total	O	0	0
			45	45		

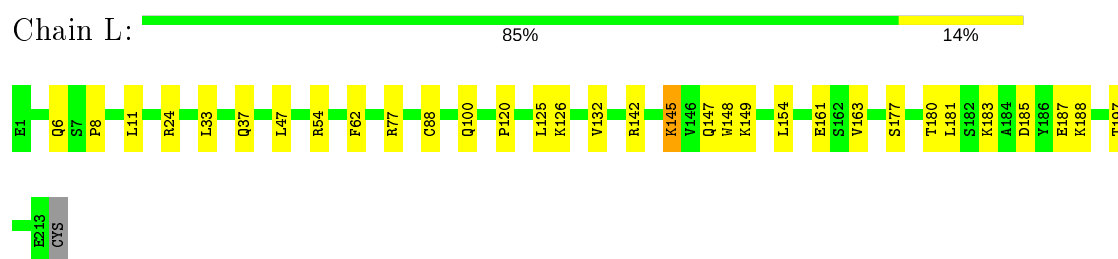
### 3 Residue-property plots [i](#)

These plots are drawn for all protein, RNA, DNA and oligosaccharide chains in the entry. The first graphic for a chain summarises the proportions of the various outlier classes displayed in the second graphic. The second graphic shows the sequence view annotated by issues in geometry and electron density. Residues are color-coded according to the number of geometric quality criteria for which they contain at least one outlier: green = 0, yellow = 1, orange = 2 and red = 3 or more. A red dot above a residue indicates a poor fit to the electron density ( $RSRZ > 2$ ). Stretches of 2 or more consecutive residues without any outlier are shown as a green connector. Residues present in the sample, but not in the model, are shown in grey.

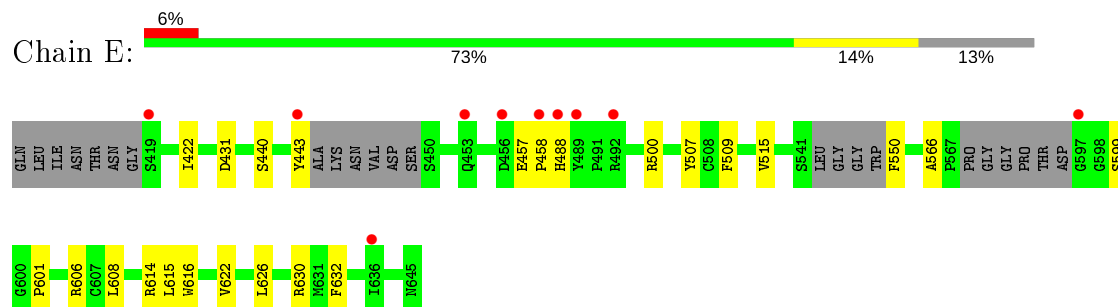
- Molecule 1: Fab AR3B heavy chain



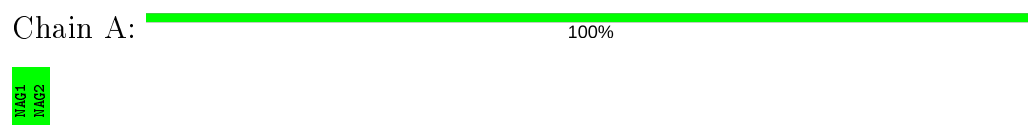
- Molecule 2: Fab AR3B light chain



- Molecule 3: Envelope glycoprotein E2



- Molecule 4: 2-acetamido-2-deoxy-beta-D-glucopyranose-(1-4)-2-acetamido-2-deoxy-beta-D-glucopyranose



- Molecule 4: 2-acetamido-2-deoxy-beta-D-glucopyranose-(1-4)-2-acetamido-2-deoxy-beta-D-glucopyranose

Chain B:  50% 50%

 UAG1  
UAG2

- Molecule 5: alpha-D-mannopyranose-(1-3)-beta-D-mannopyranose-(1-4)-2-acetamido-2-deoxy-beta-D-glucopyranose-(1-4)-2-acetamido-2-deoxy-beta-D-glucopyranose

Chain C:  50% 50%

 UAG1  
UAG2  
BMA3  
MAN4

## 4 Data and refinement statistics

Property	Value	Source
Space group	C 1 2 1	Depositor
Cell constants a, b, c, $\alpha$ , $\beta$ , $\gamma$	175.21Å 54.04Å 71.49Å 90.00° 94.74° 90.00°	Depositor
Resolution (Å)	43.65 – 2.06 43.65 – 2.06	Depositor EDS
% Data completeness (in resolution range)	93.8 (43.65-2.06) 93.8 (43.65-2.06)	Depositor EDS
$R_{merge}$	(Not available)	Depositor
$R_{sym}$	(Not available)	Depositor
$\langle I/\sigma(I) \rangle$ <sup>1</sup>	3.16 (at 2.06Å)	Xtriage
Refinement program	PHENIX 1.17.1 _3660	Depositor
R, $R_{free}$	0.189 , 0.232 0.189 , 0.232	Depositor DCC
$R_{free}$ test set	2003 reflections (5.16%)	wwPDB-VP
Wilson B-factor (Å <sup>2</sup> )	29.9	Xtriage
Anisotropy	0.687	Xtriage
Bulk solvent $k_{sol}$ (e/Å <sup>3</sup> ), $B_{sol}$ (Å <sup>2</sup> )	0.32 , 45.5	EDS
L-test for twinning <sup>2</sup>	$\langle  L  \rangle = 0.49$ , $\langle L^2 \rangle = 0.32$	Xtriage
Estimated twinning fraction	No twinning to report.	Xtriage
$F_o, F_c$ correlation	0.95	EDS
Total number of atoms	4901	wwPDB-VP
Average B, all atoms (Å <sup>2</sup> )	35.0	wwPDB-VP

Xtriage's analysis on translational NCS is as follows: *The largest off-origin peak in the Patterson function is 5.30% of the height of the origin peak. No significant pseudotranslation is detected.*

<sup>1</sup>Intensities estimated from amplitudes.

<sup>2</sup>Theoretical values of  $\langle |L| \rangle$ ,  $\langle L^2 \rangle$  for acentric reflections are 0.5, 0.333 respectively for untwinned datasets, and 0.375, 0.2 for perfectly twinned datasets.



## 5 Model quality [i](#)

### 5.1 Standard geometry [i](#)

Bond lengths and bond angles in the following residue types are not validated in this section: BMA, NAG, MAN

The Z score for a bond length (or angle) is the number of standard deviations the observed value is removed from the expected value. A bond length (or angle) with  $|Z| > 5$  is considered an outlier worth inspection. RMSZ is the root-mean-square of all Z scores of the bond lengths (or angles).

Mol	Chain	Bond lengths		Bond angles	
		RMSZ	$\# Z  > 5$	RMSZ	$\# Z  > 5$
1	H	0.31	0/1657	0.60	0/2259
2	L	0.32	0/1675	0.58	1/2273 (0.0%)
3	E	0.30	0/1256	0.60	0/1716
All	All	0.31	0/4588	0.59	1/6248 (0.0%)

There are no bond length outliers.

All (1) bond angle outliers are listed below:

Mol	Chain	Res	Type	Atoms	Z	Observed(°)	Ideal(°)
2	L	88	CYS	O-C-N	-5.13	114.49	122.70

There are no chirality outliers.

There are no planarity outliers.

### 5.2 Too-close contacts [i](#)

In the following table, the Non-H and H(model) columns list the number of non-hydrogen atoms and hydrogen atoms in the chain respectively. The H(added) column lists the number of hydrogen atoms added and optimized by MolProbity. The Clashes column lists the number of clashes within the asymmetric unit, whereas Symm-Clashes lists symmetry related clashes.

Mol	Chain	Non-H	H(model)	H(added)	Clashes	Symm-Clashes
1	H	1620	0	1618	23	0
2	L	1640	0	1587	22	0
3	E	1215	0	1115	21	0
4	A	28	0	25	0	0
4	B	28	0	25	0	0
5	C	50	0	43	0	0
6	E	14	0	13	0	0

*Continued on next page...*

*Continued from previous page...*

Mol	Chain	Non-H	H(model)	H(added)	Clashes	Symm-Clashes
7	E	45	0	0	1	0
7	H	125	0	0	1	0
7	L	136	0	0	2	0
All	All	4901	0	4426	62	0

The all-atom clashscore is defined as the number of clashes found per 1000 atoms (including hydrogen atoms). The all-atom clashscore for this structure is 7.

All (62) close contacts within the same asymmetric unit are listed below, sorted by their clash magnitude.

Atom-1	Atom-2	Interatomic distance (Å)	Clash overlap (Å)
2:L:188:LYS:NZ	7:L:301:HOH:O	1.70	0.89
2:L:149:LYS:NZ	7:L:302:HOH:O	2.07	0.86
1:H:11:VAL:HG21	1:H:147:PRO:HG3	1.58	0.86
3:E:630:ARG:HH11	3:E:632:PHE:HZ	1.24	0.83
1:H:201:LYS:HE2	1:H:201:LYS:HA	1.62	0.81
1:H:192:GLN:NE2	7:H:301:HOH:O	2.19	0.76
2:L:6:GLN:H	2:L:100:GLN:HE22	1.33	0.76
1:H:210:LYS:HE3	1:H:212:GLU:OE2	1.89	0.73
1:H:4:LEU:HD23	1:H:24:ASP:HB3	1.72	0.72
2:L:145:LYS:HD3	2:L:147:GLN:HG3	1.70	0.71
1:H:4:LEU:CD2	1:H:24:ASP:HB3	2.24	0.68
3:E:630:ARG:NH1	3:E:632:PHE:HZ	1.91	0.67
1:H:100(C):VAL:HG13	3:E:500:ARG:HH12	1.61	0.65
3:E:550:PHE:HD1	3:E:566:ALA:O	1.80	0.64
3:E:550:PHE:CD1	3:E:566:ALA:O	2.52	0.63
2:L:6:GLN:H	2:L:100:GLN:NE2	1.97	0.62
2:L:145:LYS:CD	2:L:147:GLN:HG3	2.30	0.61
1:H:25:SER:O	1:H:27:ASP:N	2.33	0.60
2:L:148:TRP:O	2:L:154:LEU:HD12	2.01	0.60
3:E:615:LEU:HD22	3:E:622:VAL:HA	1.82	0.59
1:H:4:LEU:HD23	1:H:24:ASP:CB	2.32	0.59
1:H:38:ARG:HB3	1:H:48:ILE:HD11	1.85	0.59
3:E:458:PRO:HA	3:E:599:SER:HB3	1.86	0.58
3:E:615:LEU:CD2	3:E:622:VAL:HA	2.35	0.57
2:L:37:GLN:HB2	2:L:47:LEU:HD11	1.89	0.55
3:E:440:SER:HB2	3:E:616:TRP:CD1	2.43	0.53
1:H:100(C):VAL:HG13	3:E:500:ARG:NH1	2.24	0.52
3:E:626:LEU:HD12	3:E:626:LEU:N	2.24	0.52
1:H:62:LYS:HG3	1:H:63:PHE:CD2	2.46	0.51
3:E:500:ARG:HG2	7:E:802:HOH:O	2.10	0.51

*Continued on next page...*

Continued from previous page...

Atom-1	Atom-2	Interatomic distance (Å)	Clash overlap (Å)
2:L:6:GLN:N	2:L:100:GLN:HE22	2.05	0.50
2:L:180:THR:O	2:L:181:LEU:HD23	2.11	0.50
2:L:142:ARG:NH2	2:L:163:VAL:HG11	2.27	0.50
2:L:183:LYS:O	2:L:187:GLU:HG3	2.12	0.50
3:E:608:LEU:HD11	3:E:614:ARG:HD2	1.93	0.49
1:H:58:LYS:HG3	1:H:100(F):LEU:HG	1.94	0.49
2:L:161:GLU:HG2	2:L:177:SER:HB2	1.95	0.49
3:E:457:GLU:HB3	3:E:488:HIS:NE2	2.27	0.49
3:E:509:PHE:CZ	3:E:601:PRO:HB3	2.49	0.47
3:E:608:LEU:HD11	3:E:614:ARG:CD	2.44	0.47
2:L:145:LYS:HE3	2:L:197:THR:HB	1.96	0.47
2:L:8:PRO:HG3	2:L:11:LEU:HD13	1.97	0.47
1:H:28:THR:HB	1:H:32:GLU:OE1	2.15	0.47
3:E:457:GLU:HB3	3:E:488:HIS:CE1	2.50	0.46
1:H:33:PRO:HB2	1:H:95:VAL:HB	1.97	0.46
2:L:125:LEU:O	2:L:183:LYS:HD2	2.17	0.45
2:L:145:LYS:HB3	2:L:145:LYS:HE3	1.70	0.44
1:H:29:PHE:CE2	1:H:73:ALA:HA	2.53	0.44
1:H:30:ASN:HA	1:H:52(A):PRO:HB2	2.00	0.43
1:H:54:PHE:HD1	3:E:422:ILE:HD11	1.83	0.43
1:H:72:ASP:HB2	1:H:79:TYR:HE2	1.81	0.43
1:H:3:LEU:HA	1:H:3:LEU:HD23	1.81	0.43
3:E:507:TYR:CZ	3:E:515:VAL:HG22	2.54	0.43
1:H:30:ASN:HB3	1:H:53:ALA:HB2	2.00	0.43
2:L:185:ASP:OD2	2:L:188:LYS:NZ	2.48	0.43
2:L:126:LYS:HG2	2:L:126:LYS:O	2.19	0.43
2:L:145:LYS:O	2:L:145:LYS:HE3	2.19	0.43
1:H:62:LYS:HG3	1:H:63:PHE:CE2	2.54	0.42
2:L:54:ARG:HD3	2:L:62:PHE:O	2.20	0.42
2:L:120:PRO:HD3	2:L:132:VAL:HG22	2.02	0.41
1:H:99:GLY:HA2	3:E:431:ASP:O	2.21	0.41
3:E:500:ARG:HA	3:E:500:ARG:HE	1.87	0.40

There are no symmetry-related clashes.

## 5.3 Torsion angles [i](#)

### 5.3.1 Protein backbone [i](#)

In the following table, the Percentiles column shows the percent Ramachandran outliers of the chain as a percentile score with respect to all X-ray entries followed by that with respect to entries

of similar resolution.

The Analysed column shows the number of residues for which the backbone conformation was analysed, and the total number of residues.

Mol	Chain	Analysed	Favoured	Allowed	Outliers	Percentiles	
1	H	212/230 (92%)	209 (99%)	3 (1%)	0	100	100
2	L	212/215 (99%)	206 (97%)	6 (3%)	0	100	100
3	E	146/177 (82%)	140 (96%)	6 (4%)	0	100	100
All	All	570/622 (92%)	555 (97%)	15 (3%)	0	100	100

There are no Ramachandran outliers to report.

### 5.3.2 Protein sidechains ⓘ

In the following table, the Percentiles column shows the percent sidechain outliers of the chain as a percentile score with respect to all X-ray entries followed by that with respect to entries of similar resolution.

The Analysed column shows the number of residues for which the sidechain conformation was analysed, and the total number of residues.

Mol	Chain	Analysed	Rotameric	Outliers	Percentiles	
1	H	182/190 (96%)	182 (100%)	0	100	100
2	L	185/186 (100%)	181 (98%)	4 (2%)	52	46
3	E	135/152 (89%)	133 (98%)	2 (2%)	65	62
All	All	502/528 (95%)	496 (99%)	6 (1%)	71	69

All (6) residues with a non-rotameric sidechain are listed below:

Mol	Chain	Res	Type
2	L	24	ARG
2	L	33	LEU
2	L	77	ARG
2	L	145	LYS
3	E	443	TYR
3	E	606	ARG

Some sidechains can be flipped to improve hydrogen bonding and reduce clashes. All (2) such sidechains are listed below:

Mol	Chain	Res	Type
1	H	204	ASN
3	E	453	GLN

### 5.3.3 RNA ⓘ

There are no RNA molecules in this entry.

## 5.4 Non-standard residues in protein, DNA, RNA chains ⓘ

There are no non-standard protein/DNA/RNA residues in this entry.

## 5.5 Carbohydrates ⓘ

8 monosaccharides are modelled in this entry.

In the following table, the Counts columns list the number of bonds (or angles) for which Mogul statistics could be retrieved, the number of bonds (or angles) that are observed in the model and the number of bonds (or angles) that are defined in the Chemical Component Dictionary. The Link column lists molecule types, if any, to which the group is linked. The Z score for a bond length (or angle) is the number of standard deviations the observed value is removed from the expected value. A bond length (or angle) with  $|Z| > 2$  is considered an outlier worth inspection. RMSZ is the root-mean-square of all Z scores of the bond lengths (or angles).

Mol	Type	Chain	Res	Link	Bond lengths			Bond angles		
					Counts	RMSZ	# $ Z  > 2$	Counts	RMSZ	# $ Z  > 2$
4	NAG	A	1	3,4	14,14,15	0.27	0	17,19,21	0.42	0
4	NAG	A	2	4	14,14,15	0.30	0	17,19,21	0.45	0
4	NAG	B	1	3,4	14,14,15	0.20	0	17,19,21	0.42	0
4	NAG	B	2	4	14,14,15	0.25	0	17,19,21	0.61	1 (5%)
5	NAG	C	1	3,5	14,14,15	0.49	0	17,19,21	0.77	1 (5%)
5	NAG	C	2	5	14,14,15	0.24	0	17,19,21	0.44	0
5	BMA	C	3	5	11,11,12	0.84	0	15,15,17	0.99	0
5	MAN	C	4	5	11,11,12	0.81	1 (9%)	15,15,17	1.16	2 (13%)

In the following table, the Chirals column lists the number of chiral outliers, the number of chiral centers analysed, the number of these observed in the model and the number defined in the Chemical Component Dictionary. Similar counts are reported in the Torsion and Rings columns. '-' means no outliers of that kind were identified.

Mol	Type	Chain	Res	Link	Chirals	Torsions	Rings
4	NAG	A	1	3,4	-	0/6/23/26	0/1/1/1

*Continued on next page...*

*Continued from previous page...*

Mol	Type	Chain	Res	Link	Chirals	Torsions	Rings
4	NAG	A	2	4	-	2/6/23/26	0/1/1/1
4	NAG	B	1	3,4	-	0/6/23/26	0/1/1/1
4	NAG	B	2	4	-	0/6/23/26	0/1/1/1
5	NAG	C	1	3,5	-	0/6/23/26	0/1/1/1
5	NAG	C	2	5	-	0/6/23/26	0/1/1/1
5	BMA	C	3	5	-	2/2/19/22	0/1/1/1
5	MAN	C	4	5	-	2/2/19/22	0/1/1/1

All (1) bond length outliers are listed below:

Mol	Chain	Res	Type	Atoms	Z	Observed(Å)	Ideal(Å)
5	C	4	MAN	C1-C2	2.40	1.57	1.52

All (4) bond angle outliers are listed below:

Mol	Chain	Res	Type	Atoms	Z	Observed(°)	Ideal(°)
5	C	4	MAN	C1-O5-C5	2.47	115.53	112.19
5	C	4	MAN	O2-C2-C3	-2.46	105.20	110.14
5	C	1	NAG	O4-C4-C3	-2.22	105.22	110.35
4	B	2	NAG	C1-O5-C5	2.13	115.08	112.19

There are no chirality outliers.

All (6) torsion outliers are listed below:

Mol	Chain	Res	Type	Atoms
5	C	4	MAN	O5-C5-C6-O6
5	C	4	MAN	C4-C5-C6-O6
4	A	2	NAG	O5-C5-C6-O6
4	A	2	NAG	C4-C5-C6-O6
5	C	3	BMA	C4-C5-C6-O6
5	C	3	BMA	O5-C5-C6-O6

There are no ring outliers.

No monomer is involved in short contacts.

## 5.6 Ligand geometry ⓘ

1 ligand is modelled in this entry.

In the following table, the Counts columns list the number of bonds (or angles) for which Mogul

statistics could be retrieved, the number of bonds (or angles) that are observed in the model and the number of bonds (or angles) that are defined in the Chemical Component Dictionary. The Link column lists molecule types, if any, to which the group is linked. The Z score for a bond length (or angle) is the number of standard deviations the observed value is removed from the expected value. A bond length (or angle) with  $|Z| > 2$  is considered an outlier worth inspection. RMSZ is the root-mean-square of all Z scores of the bond lengths (or angles).

Mol	Type	Chain	Res	Link	Bond lengths			Bond angles		
					Counts	RMSZ	$\# Z  > 2$	Counts	RMSZ	$\# Z  > 2$
6	NAG	E	701	3	14,14,15	0.36	0	17,19,21	0.54	0

In the following table, the Chirals column lists the number of chiral outliers, the number of chiral centers analysed, the number of these observed in the model and the number defined in the Chemical Component Dictionary. Similar counts are reported in the Torsion and Rings columns. '-' means no outliers of that kind were identified.

Mol	Type	Chain	Res	Link	Chirals	Torsions	Rings
6	NAG	E	701	3	-	4/6/23/26	0/1/1/1

There are no bond length outliers.

There are no bond angle outliers.

There are no chirality outliers.

All (4) torsion outliers are listed below:

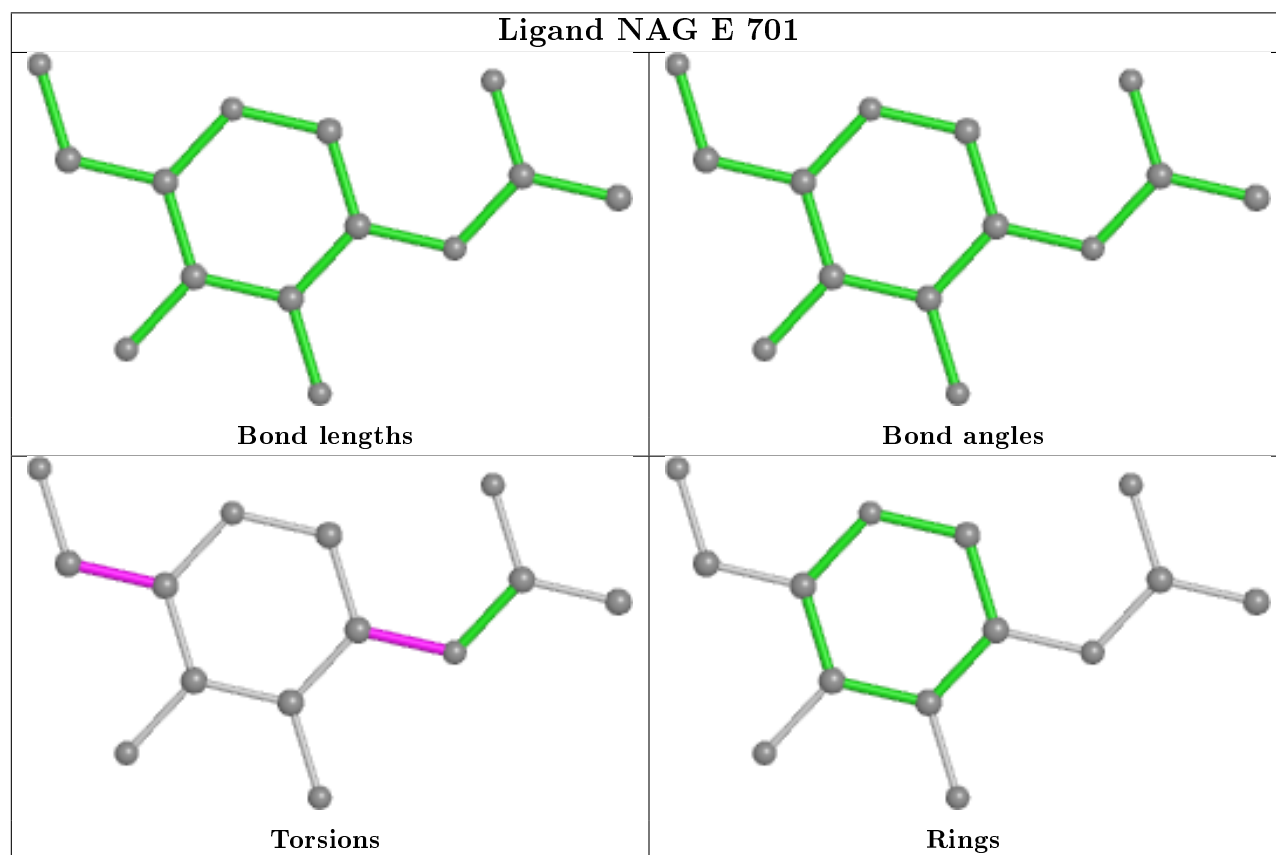
Mol	Chain	Res	Type	Atoms
6	E	701	NAG	C4-C5-C6-O6
6	E	701	NAG	O5-C5-C6-O6
6	E	701	NAG	C3-C2-N2-C7
6	E	701	NAG	C1-C2-N2-C7

There are no ring outliers.

No monomer is involved in short contacts.

The following is a two-dimensional graphical depiction of Mogul quality analysis of bond lengths, bond angles, torsion angles, and ring geometry for all instances of the Ligand of Interest. In addition, ligands with molecular weight  $> 250$  and outliers as shown on the validation Tables will also be included. For torsion angles, if less than 5% of the Mogul distribution of torsion angles is within 10 degrees of the torsion angle in question, then that torsion angle is considered an outlier. Any bond that is central to one or more torsion angles identified as an outlier by Mogul will be highlighted in the graph. For rings, the root-mean-square deviation (RMSD) between the ring in question and similar rings identified by Mogul is calculated over all ring torsion angles. If the average RMSD is greater than 60 degrees and the minimal RMSD between the ring in question and any Mogul-identified rings is also greater than 60 degrees, then that ring is considered an outlier.

The outliers are highlighted in purple. The color gray indicates Mogul did not find sufficient equivalents in the CSD to analyse the geometry.



## 5.7 Other polymers [i](#)

There are no such residues in this entry.

## 5.8 Polymer linkage issues [i](#)

There are no chain breaks in this entry.



## 6 Fit of model and data [i](#)

### 6.1 Protein, DNA and RNA chains [i](#)

In the following table, the column labelled ‘#RSRZ> 2’ contains the number (and percentage) of RSRZ outliers, followed by percent RSRZ outliers for the chain as percentile scores relative to all X-ray entries and entries of similar resolution. The OWAB column contains the minimum, median, 95<sup>th</sup> percentile and maximum values of the occupancy-weighted average B-factor per residue. The column labelled ‘Q< 0.9’ lists the number of (and percentage) of residues with an average occupancy less than 0.9.

Mol	Chain	Analysed	<RSRZ>	#RSRZ>2	OWAB(Å <sup>2</sup> )	Q<0.9
1	H	218/230 (94%)	-0.23	2 (0%) 84 85	21, 29, 56, 73	0
2	L	214/215 (99%)	-0.22	0 100 100	21, 31, 46, 72	0
3	E	154/177 (87%)	0.15	10 (6%) 18 19	23, 34, 68, 86	0
All	All	586/622 (94%)	-0.13	12 (2%) 65 67	21, 31, 59, 86	0

All (12) RSRZ outliers are listed below:

Mol	Chain	Res	Type	RSRZ
3	E	443	TYR	5.2
3	E	488	HIS	4.4
3	E	636	ILE	4.3
3	E	458	PRO	3.7
3	E	456	ASP	3.0
3	E	489	TYR	2.7
1	H	29	PHE	2.7
3	E	453	GLN	2.4
1	H	27	ASP	2.4
3	E	597	GLY	2.2
3	E	419	SER	2.1
3	E	492	ARG	2.1

### 6.2 Non-standard residues in protein, DNA, RNA chains [i](#)

There are no non-standard protein/DNA/RNA residues in this entry.

### 6.3 Carbohydrates [i](#)

In the following table, the Atoms column lists the number of modelled atoms in the group and the number defined in the chemical component dictionary. The B-factors column lists the minimum,

median, 95<sup>th</sup> percentile and maximum values of B factors of atoms in the group. The column labelled 'Q< 0.9' lists the number of atoms with occupancy less than 0.9.

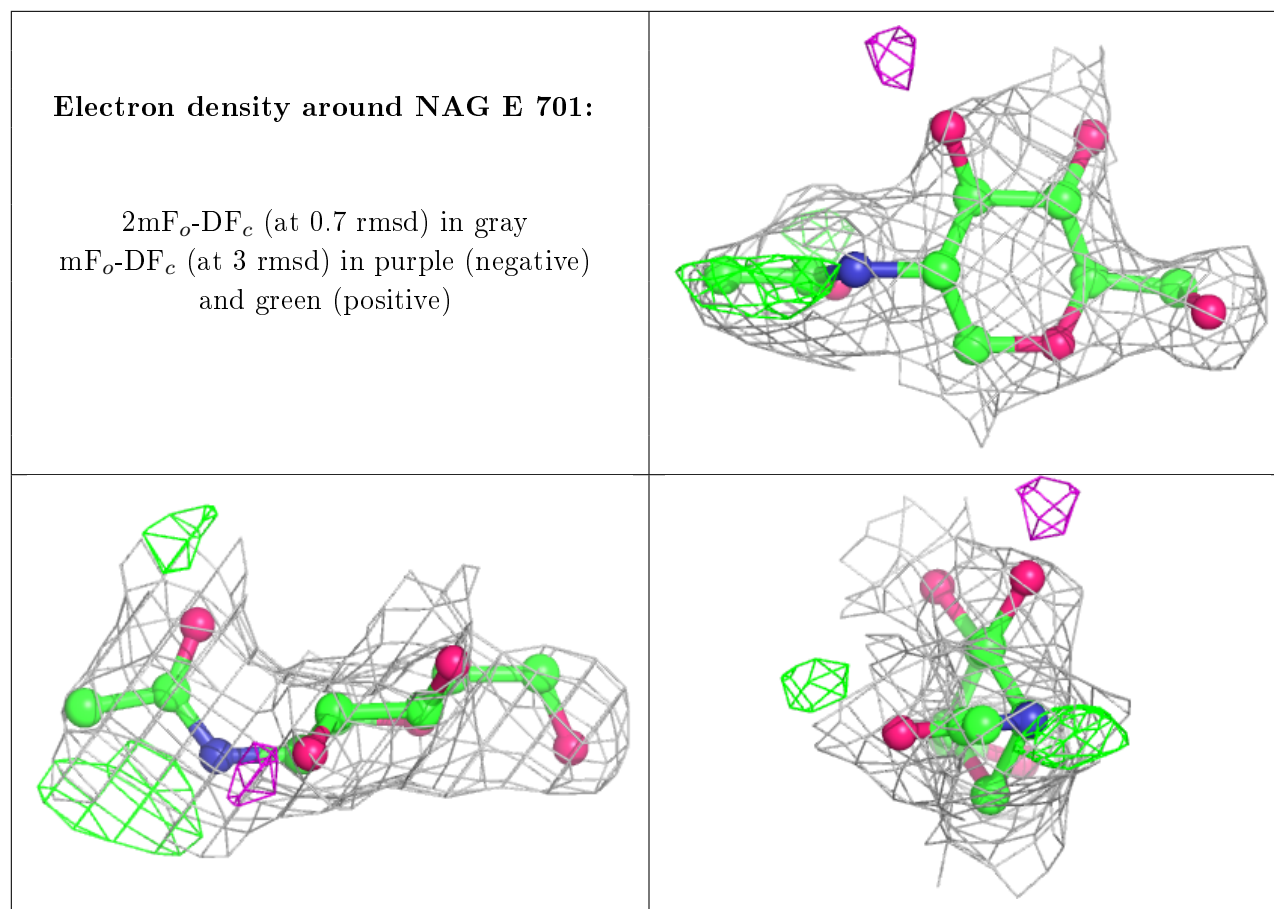
Mol	Type	Chain	Res	Atoms	RSCC	RSR	B-factors(Å <sup>2</sup> )	Q<0.9
5	MAN	C	4	11/12	0.77	0.40	67,79,98,98	0
5	BMA	C	3	11/12	0.79	0.27	69,77,94,112	0
4	NAG	B	2	14/15	0.84	0.14	40,65,81,88	0
5	NAG	C	1	14/15	0.84	0.23	44,62,76,80	0
5	NAG	C	2	14/15	0.87	0.42	63,79,91,94	0
4	NAG	A	2	14/15	0.92	0.17	49,59,76,100	0
4	NAG	B	1	14/15	0.94	0.10	37,42,51,54	0
4	NAG	A	1	14/15	0.95	0.10	31,40,49,51	0

## 6.4 Ligands

In the following table, the Atoms column lists the number of modelled atoms in the group and the number defined in the chemical component dictionary. The B-factors column lists the minimum, median, 95<sup>th</sup> percentile and maximum values of B factors of atoms in the group. The column labelled 'Q< 0.9' lists the number of atoms with occupancy less than 0.9.

Mol	Type	Chain	Res	Atoms	RSCC	RSR	B-factors(Å <sup>2</sup> )	Q<0.9
6	NAG	E	701	14/15	0.76	0.20	36,54,61,69	0

The following is a graphical depiction of the model fit to experimental electron density of all instances of the Ligand of Interest. In addition, ligands with molecular weight > 250 and outliers as shown on the geometry validation Tables will also be included. Each fit is shown from different orientation to approximate a three-dimensional view.



## 6.5 Other polymers ⓘ

There are no such residues in this entry.