



Full wwPDB EM Validation Report ⓘ

Nov 12, 2022 – 06:44 AM EST

PDB ID : 6UZB
EMDB ID : EMD-20955
Title : Anthrax toxin protective antigen channels bound to edema factor
Authors : Hardenbrook, N.J.; Liu, S.; Zhou, K.; Zhou, Z.H.; Krantz, B.A.
Deposited on : 2019-11-14
Resolution : 3.20 Å(reported)

This is a Full wwPDB EM Validation Report for a publicly released PDB entry.

We welcome your comments at validation@mail.wwpdb.org

A user guide is available at

<https://www.wwpdb.org/validation/2017/EMValidationReportHelp>

with specific help available everywhere you see the ⓘ symbol.

The types of validation reports are described at

<http://www.wwpdb.org/validation/2017/FAQs#types>.

The following versions of software and data (see [references ⓘ](#)) were used in the production of this report:

EMDB validation analysis : 0.0.1.dev43
MolProbity : 4.02b-467
Percentile statistics : 20191225.v01 (using entries in the PDB archive December 25th 2019)
MapQ : 1.9.9
Ideal geometry (proteins) : Engh & Huber (2001)
Ideal geometry (DNA, RNA) : Parkinson et al. (1996)
Validation Pipeline (wwPDB-VP) : 2.31.2

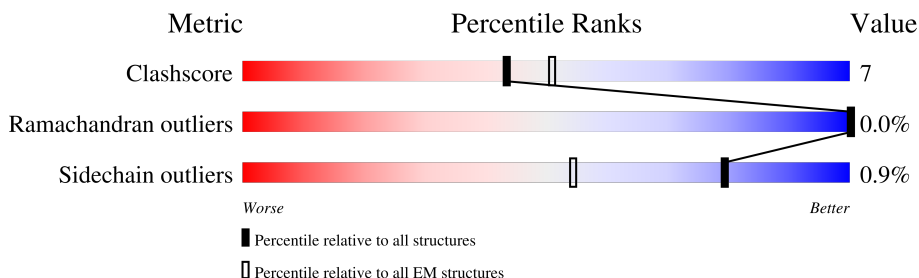
1 Overall quality at a glance

The following experimental techniques were used to determine the structure:

ELECTRON MICROSCOPY

The reported resolution of this entry is 3.20 Å.

Percentile scores (ranging between 0-100) for global validation metrics of the entry are shown in the following graphic. The table shows the number of entries on which the scores are based.



Metric	Whole archive (#Entries)	EM structures (#Entries)
Clashscore	158937	4297
Ramachandran outliers	154571	4023
Sidechain outliers	154315	3826

The table below summarises the geometric issues observed across the polymeric chains and their fit to the map. The red, orange, yellow and green segments of the bar indicate the fraction of residues that contain outliers for ≥ 3 , 2, 1 and 0 types of geometric quality criteria respectively. A grey segment represents the fraction of residues that are not modelled. The numeric value for each fraction is indicated below the corresponding segment, with a dot representing fractions $\leq 5\%$. The upper red bar (where present) indicates the fraction of residues that have poor fit to the EM map (all-atom inclusion $< 40\%$). The numeric value is given above the bar.

Mol	Chain	Length	Quality of chain
1	A	735	<div> <div>24%</div> <div>66%</div> <div>11%</div> <div>24%</div> </div>
1	B	735	<div> <div>23%</div> <div>65%</div> <div>11%</div> <div>24%</div> </div>
1	C	735	<div> <div>24%</div> <div>65%</div> <div>11%</div> <div>24%</div> </div>
1	D	735	<div> <div>25%</div> <div>64%</div> <div>13%</div> <div>24%</div> </div>
1	E	735	<div> <div>26%</div> <div>67%</div> <div>9%</div> <div>24%</div> </div>
1	F	735	<div> <div>25%</div> <div>65%</div> <div>11%</div> <div>24%</div> </div>
1	G	735	<div> <div>25%</div> <div>67%</div> <div>10%</div> <div>24%</div> </div>
2	H	767	<div> <div>52%</div> <div>70%</div> <div>22%</div> <div>6%</div> </div>

2 Entry composition [i](#)

There are 3 unique types of molecules in this entry. The entry contains 36951 atoms, of which 0 are hydrogens and 0 are deuteriums.

In the tables below, the AltConf column contains the number of residues with at least one atom in alternate conformation and the Trace column contains the number of residues modelled with at most 2 atoms.

- Molecule 1 is a protein called Protective antigen.

Mol	Chain	Residues	Atoms					AltConf	Trace
1	A	562	Total	C	N	O	S	0	0
			4438	2772	765	895	6		
1	B	562	Total	C	N	O	S	0	0
			4438	2772	765	895	6		
1	C	562	Total	C	N	O	S	0	0
			4438	2772	765	895	6		
1	D	562	Total	C	N	O	S	0	0
			4438	2772	765	895	6		
1	E	562	Total	C	N	O	S	0	0
			4438	2772	765	895	6		
1	F	562	Total	C	N	O	S	0	0
			4438	2772	765	895	6		
1	G	562	Total	C	N	O	S	0	0
			4438	2772	765	895	6		

- Molecule 2 is a protein called Calmodulin-sensitive adenylyate cyclase.

Mol	Chain	Residues	Atoms					AltConf	Trace
2	H	720	Total	C	N	O	S	0	0
			5871	3749	975	1141	6		

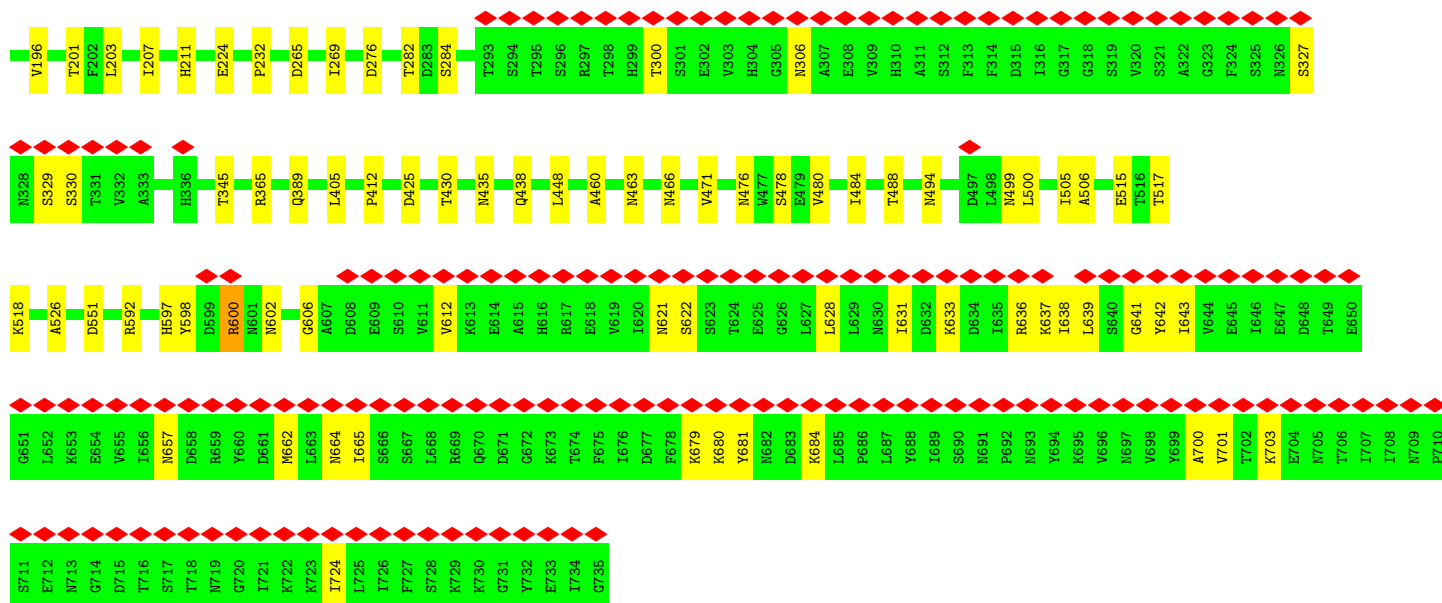
- Molecule 3 is CALCIUM ION (three-letter code: CA) (formula: Ca).

Mol	Chain	Residues	Atoms		AltConf
3	A	2	Total	Ca	0
			2	2	
3	B	2	Total	Ca	0
			2	2	
3	C	2	Total	Ca	0
			2	2	
3	D	2	Total	Ca	0
			2	2	
3	E	2	Total	Ca	0
			2	2	

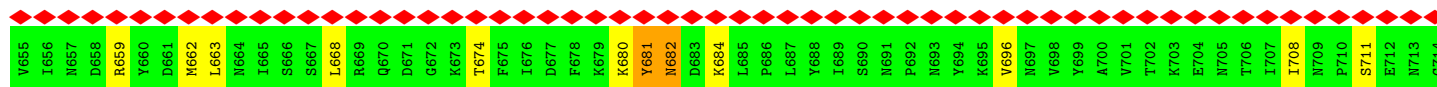
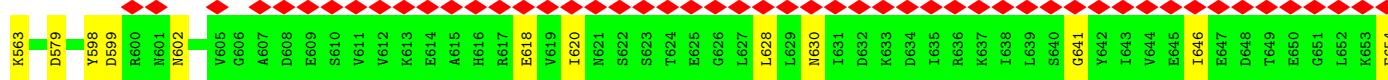
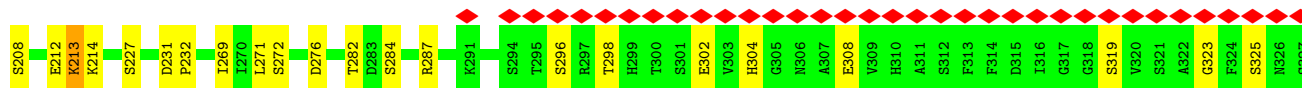
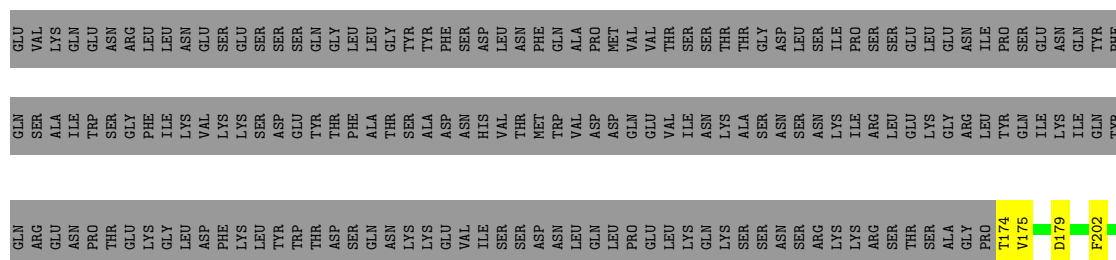
Continued on next page...

Continued from previous page...

Mol	Chain	Residues	Atoms		AltConf
3	F	2	Total 2	Ca 2	0
3	G	2	Total 2	Ca 2	0

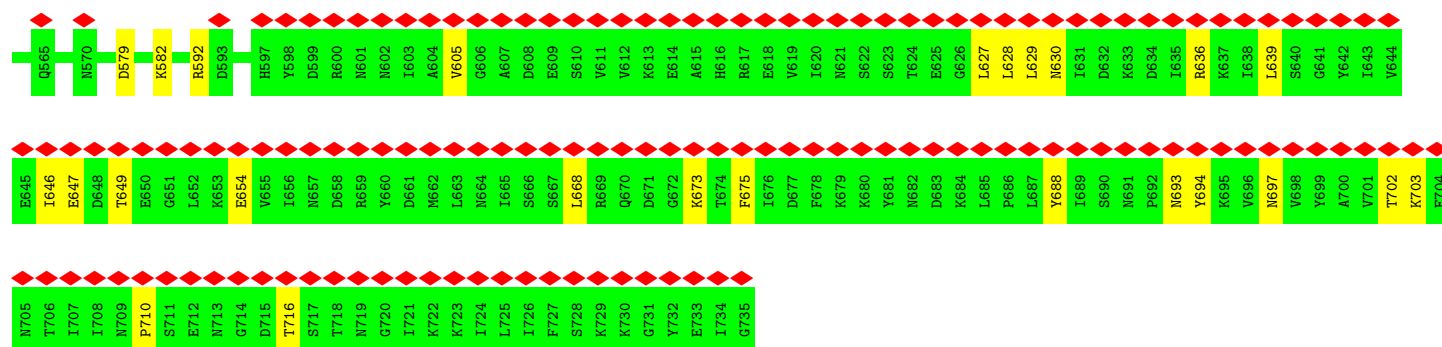


• Molecule 1: Protective antigen

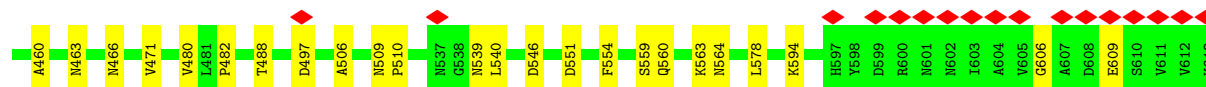
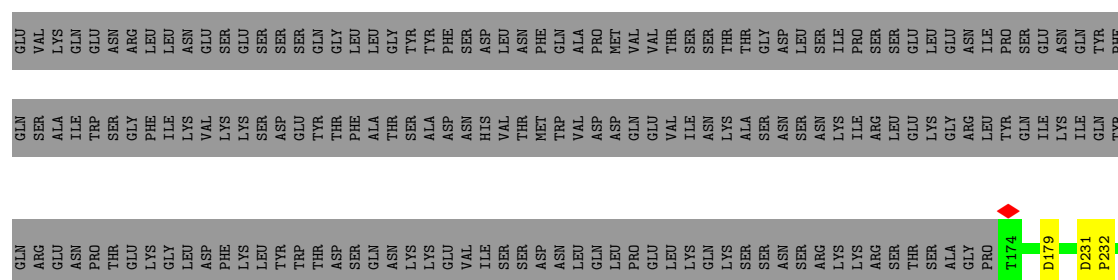


• Molecule 1: Protective antigen

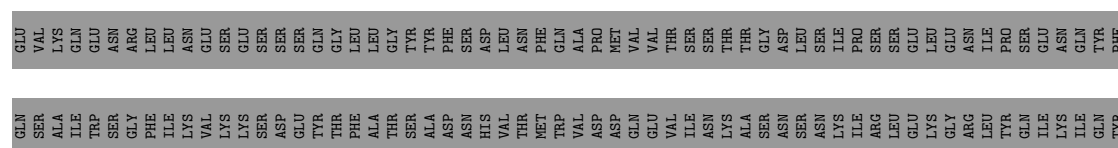


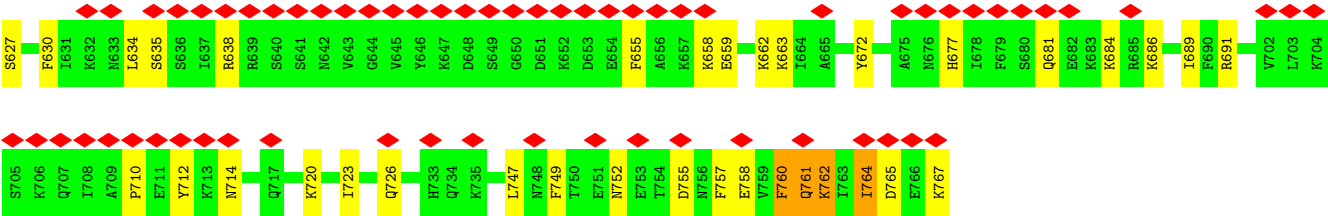


• Molecule 1: Protective antigen



• Molecule 1: Protective antigen





4 Experimental information

Property	Value	Source
EM reconstruction method	SINGLE PARTICLE	Depositor
Imposed symmetry	POINT, C1	Depositor
Number of particles used	333455	Depositor
Resolution determination method	FSC 0.143 CUT-OFF	Depositor
CTF correction method	PHASE FLIPPING AND AMPLITUDE CORRECTION	Depositor
Microscope	FEI TITAN KRIOS	Depositor
Voltage (kV)	300	Depositor
Electron dose ($e^-/\text{\AA}^2$)	62.9	Depositor
Minimum defocus (nm)	Not provided	
Maximum defocus (nm)	Not provided	
Magnification	Not provided	
Image detector	GATAN K2 SUMMIT (4k x 4k)	Depositor
Maximum map value	0.207	Depositor
Minimum map value	-0.079	Depositor
Average map value	0.000	Depositor
Map value standard deviation	0.006	Depositor
Recommended contour level	0.03	Depositor
Map size (Å)	321.00003, 321.00003, 321.00003	wwPDB
Map dimensions	300, 300, 300	wwPDB
Map angles (°)	90.0, 90.0, 90.0	wwPDB
Pixel spacing (Å)	1.07, 1.07, 1.07	Depositor

5 Model quality [i](#)

5.1 Standard geometry [i](#)

Bond lengths and bond angles in the following residue types are not validated in this section: CA

The Z score for a bond length (or angle) is the number of standard deviations the observed value is removed from the expected value. A bond length (or angle) with $|Z| > 5$ is considered an outlier worth inspection. RMSZ is the root-mean-square of all Z scores of the bond lengths (or angles).

Mol	Chain	Bond lengths		Bond angles	
		RMSZ	# Z >5	RMSZ	# Z >5
1	A	0.53	0/4515	0.58	0/6125
1	B	0.52	0/4515	0.58	0/6125
1	C	0.50	0/4515	0.57	0/6125
1	D	0.45	0/4515	0.56	0/6125
1	E	0.43	0/4515	0.56	0/6125
1	F	0.46	0/4515	0.54	0/6125
1	G	0.49	0/4515	0.57	0/6125
2	H	0.35	0/5976	0.54	0/8024
All	All	0.47	0/37581	0.56	0/50899

There are no bond length outliers.

There are no bond angle outliers.

There are no chirality outliers.

There are no planarity outliers.

5.2 Too-close contacts [i](#)

In the following table, the Non-H and H(model) columns list the number of non-hydrogen atoms and hydrogen atoms in the chain respectively. The H(added) column lists the number of hydrogen atoms added and optimized by MolProbity. The Clashes column lists the number of clashes within the asymmetric unit, whereas Symm-Clashes lists symmetry-related clashes.

Mol	Chain	Non-H	H(model)	H(added)	Clashes	Symm-Clashes
1	A	4438	0	4378	64	0
1	B	4438	0	4378	55	0
1	C	4438	0	4378	57	0
1	D	4438	0	4378	58	0
1	E	4438	0	4378	43	0

Continued on next page...

Continued from previous page...

Mol	Chain	Non-H	H(model)	H(added)	Clashes	Symm-Clashes
1	F	4438	0	4378	58	0
1	G	4438	0	4378	49	0
2	H	5871	0	5890	149	0
3	A	2	0	0	0	0
3	B	2	0	0	0	0
3	C	2	0	0	0	0
3	D	2	0	0	0	0
3	E	2	0	0	0	0
3	F	2	0	0	0	0
3	G	2	0	0	0	0
All	All	36951	0	36536	514	0

The all-atom clashscore is defined as the number of clashes found per 1000 atoms (including hydrogen atoms). The all-atom clashscore for this structure is 7.

All (514) close contacts within the same asymmetric unit are listed below, sorted by their clash magnitude.

Atom-1	Atom-2	Interatomic distance (Å)	Clash overlap (Å)
2:H:294:LEU:CD1	2:H:562:ILE:HD13	1.42	1.48
2:H:294:LEU:HD12	2:H:562:ILE:CD1	1.57	1.35
2:H:686:LYS:HD3	2:H:764:ILE:CG2	1.67	1.24
1:F:609:GLU:HG2	1:F:724:ILE:CD1	1.66	1.23
2:H:294:LEU:HD23	2:H:463:ALA:HB3	1.19	1.19
2:H:686:LYS:CD	2:H:764:ILE:HG21	1.75	1.16
1:F:609:GLU:HG2	1:F:724:ILE:HD13	1.09	1.09
2:H:294:LEU:CD1	2:H:562:ILE:CD1	2.24	1.07
1:C:662:MET:HG2	1:C:681:TYR:HE2	1.13	1.07
1:G:646:ILE:HD11	1:G:687:LEU:HD23	1.35	1.06
1:C:662:MET:HG2	1:C:681:TYR:CE2	1.89	1.05
2:H:757:PHE:O	2:H:761:GLN:HB2	1.55	1.05
1:F:609:GLU:CG	1:F:724:ILE:CD1	2.35	1.03
1:E:210:ILE:HA	1:E:213:LYS:HE2	1.44	1.00
2:H:294:LEU:HD11	2:H:562:ILE:HD13	1.44	0.99
2:H:375:LEU:HD12	2:H:378:GLU:HB3	1.45	0.96
2:H:294:LEU:CD2	2:H:463:ALA:HB3	1.97	0.95
2:H:375:LEU:CD1	2:H:378:GLU:HB3	1.95	0.94
1:C:662:MET:CG	1:C:681:TYR:HE2	1.81	0.93
2:H:686:LYS:HD3	2:H:764:ILE:HG21	0.90	0.88
2:H:294:LEU:HD12	2:H:562:ILE:HD13	0.90	0.88
2:H:164:LYS:HE3	2:H:192:ILE:HG21	1.55	0.88
1:F:609:GLU:CG	1:F:724:ILE:HD11	2.05	0.86

Continued on next page...

Continued from previous page...

Atom-1	Atom-2	Interatomic distance (Å)	Clash overlap (Å)
2:H:40:ASN:ND2	2:H:43:LEU:HB2	1.91	0.85
1:G:646:ILE:HD11	1:G:687:LEU:CD2	2.05	0.84
1:B:600:ARG:NH1	1:B:600:ARG:HA	1.92	0.84
1:C:662:MET:CG	1:C:681:TYR:CE2	2.59	0.82
1:B:600:ARG:HA	1:B:600:ARG:CZ	2.11	0.80
1:G:646:ILE:CD1	1:G:687:LEU:HD23	2.11	0.80
1:F:609:GLU:HG3	1:F:724:ILE:HD11	1.65	0.78
2:H:164:LYS:HZ1	2:H:192:ILE:HG12	1.52	0.74
2:H:686:LYS:HD2	2:H:761:GLN:OE1	1.89	0.72
1:B:679:LYS:HB3	1:B:684:LYS:HA	1.70	0.71
2:H:757:PHE:CE2	2:H:761:GLN:HG2	2.26	0.70
2:H:294:LEU:HD12	2:H:562:ILE:HD12	1.67	0.70
1:F:628:LEU:HD11	1:F:669:ARG:HH22	1.57	0.69
1:A:627:LEU:HB2	1:A:678:PHE:CZ	2.28	0.68
2:H:375:LEU:CD1	2:H:378:GLU:CB	2.70	0.68
2:H:164:LYS:HE3	2:H:192:ILE:CG2	2.23	0.67
1:F:696:VAL:HG21	1:F:734:ILE:HD11	1.75	0.67
1:C:213:LYS:HD3	1:C:214:LYS:HG3	1.77	0.67
1:F:647:GLU:HB3	1:F:695:LYS:HB2	1.77	0.67
2:H:367:LYS:HD2	2:H:442:GLU:HB2	1.77	0.66
2:H:375:LEU:HD12	2:H:378:GLU:CB	2.23	0.66
2:H:375:LEU:HD11	2:H:378:GLU:HB3	1.76	0.66
2:H:315:LEU:HG	2:H:544:HIS:HB2	1.77	0.65
1:A:626:GLY:N	1:A:678:PHE:HE1	1.95	0.65
2:H:757:PHE:O	2:H:761:GLN:CB	2.40	0.65
1:F:628:LEU:HD21	1:F:673:LYS:CG	2.27	0.64
2:H:764:ILE:N	2:H:764:ILE:HD13	2.13	0.64
2:H:761:GLN:OE1	2:H:761:GLN:HA	1.98	0.64
1:G:621:ASN:HB3	1:G:628:LEU:H	1.62	0.63
2:H:461:LEU:HB3	2:H:546:THR:HG22	1.79	0.63
2:H:583:GLU:HA	2:H:587:THR:HB	1.81	0.63
1:A:623:SER:O	1:A:678:PHE:CZ	2.51	0.63
2:H:413:ILE:HG12	2:H:420:VAL:HG22	1.80	0.63
1:C:646:ILE:HB	1:C:654:GLU:HB2	1.81	0.62
2:H:375:LEU:HD12	2:H:375:LEU:O	2.00	0.62
2:H:659:GLU:HA	2:H:662:LYS:HE2	1.82	0.61
1:A:626:GLY:CA	1:A:678:PHE:CE1	2.84	0.61
1:G:679:LYS:HB3	1:G:684:LYS:HA	1.83	0.61
1:B:300:THR:HB	1:B:327:SER:HB3	1.83	0.61
1:C:232:PRO:HD3	1:C:480:VAL:HG11	1.83	0.61
1:F:628:LEU:HD21	1:F:673:LYS:HG2	1.82	0.61

Continued on next page...

Continued from previous page...

Atom-1	Atom-2	Interatomic distance (Å)	Clash overlap (Å)
1:A:698:VAL:HB	1:A:727:PHE:HB3	1.83	0.60
1:E:710:PRO:HB3	1:E:716:THR:HA	1.84	0.60
1:D:463:ASN:ND2	1:D:466:ASN:OD1	2.35	0.60
1:G:731:GLY:HA2	1:G:734:ILE:HD12	1.84	0.60
1:D:290:SER:HB3	1:D:337:SER:HB3	1.84	0.60
1:F:642:TYR:HA	1:F:700:ALA:HA	1.83	0.60
1:D:327:SER:HB3	1:E:302:GLU:HG3	1.84	0.60
1:C:711:SER:HB2	1:C:715:ASP:HB3	1.84	0.59
2:H:686:LYS:CG	2:H:764:ILE:HG21	2.31	0.59
2:H:689:ILE:HG13	2:H:760:PHE:HZ	1.66	0.59
1:C:618:GLU:HB3	1:C:630:ASN:HB3	1.85	0.59
1:D:425:ASP:HB2	1:D:430:THR:HB	1.84	0.59
1:F:705:ASN:ND2	1:F:722:LYS:O	2.36	0.59
2:H:39:THR:O	2:H:39:THR:HG23	2.03	0.59
1:A:679:LYS:CE	1:A:685:LEU:HA	2.32	0.59
1:F:269:ILE:HG21	1:F:448:LEU:HD23	1.85	0.58
1:F:698:VAL:HB	1:F:727:PHE:HB3	1.86	0.58
1:E:463:ASN:ND2	1:E:466:ASN:OD1	2.36	0.58
1:B:478:SER:HB2	1:C:404:ILE:HD11	1.86	0.58
1:F:648:ASP:HB3	1:F:651:GLY:H	1.69	0.58
1:G:425:ASP:HB2	1:G:430:THR:HB	1.85	0.58
1:B:282:THR:HB	1:B:345:THR:HB	1.84	0.58
1:A:647:GLU:HB3	1:A:695:LYS:HB2	1.86	0.57
1:D:276:ASP:OD1	1:D:276:ASP:N	2.36	0.57
1:C:463:ASN:ND2	1:C:466:ASN:OD1	2.38	0.57
1:E:300:THR:HB	1:E:327:SER:HB3	1.87	0.57
2:H:562:ILE:HG23	2:H:570:ILE:HB	1.87	0.57
1:A:666:SER:HA	1:A:676:ILE:HA	1.86	0.57
2:H:620:LYS:O	2:H:726:GLN:NE2	2.38	0.57
1:A:595:ARG:NH2	1:A:634:ASP:OD2	2.38	0.57
1:F:482:PRO:HG2	1:G:404:ILE:HD13	1.87	0.57
2:H:479:GLU:HG3	2:H:499:LEU:HD11	1.87	0.57
1:A:597:HIS:ND1	1:A:606:GLY:O	2.38	0.56
1:B:499:ASN:OD1	1:B:637:LYS:NZ	2.38	0.56
1:F:463:ASN:ND2	1:F:466:ASN:OD1	2.37	0.56
1:F:539:ASN:ND2	1:F:546:ASP:OD2	2.37	0.56
1:G:630:ASN:HA	1:G:673:LYS:HD2	1.87	0.56
2:H:752:ASN:ND2	2:H:755:ASP:OD1	2.38	0.56
1:F:292:ASN:HB3	1:F:335:ASP:HB3	1.87	0.56
1:G:463:ASN:ND2	1:G:466:ASN:OD1	2.38	0.56
1:A:626:GLY:HA2	1:A:678:PHE:CE1	2.41	0.55

Continued on next page...

Continued from previous page...

Atom-1	Atom-2	Interatomic distance (Å)	Clash overlap (Å)
2:H:373:ASP:HB3	2:H:376:ARG:HB2	1.86	0.55
2:H:145:SER:OG	2:H:205:GLN:NE2	2.37	0.55
2:H:290:ASN:HA	2:H:565:PRO:HB3	1.88	0.55
1:C:662:MET:CB	1:C:681:TYR:HE2	2.19	0.55
2:H:93:ASN:HB2	2:H:101:LYS:HD3	1.89	0.55
2:H:548:GLN:HB2	2:H:596:ASN:HB2	1.89	0.55
1:B:592:ARG:NH1	1:B:602:ASN:OD1	2.36	0.55
1:C:329:SER:HA	1:D:300:THR:HA	1.88	0.55
1:D:551:ASP:OD1	1:D:551:ASP:N	2.39	0.55
2:H:365:ILE:HD11	2:H:444:MET:HB3	1.88	0.55
2:H:368:ILE:HD12	2:H:452:LEU:HG	1.89	0.55
1:D:667:SER:HB2	1:D:675:PHE:HB3	1.89	0.55
1:D:699:TYR:HB3	1:D:723:LYS:HB3	1.89	0.55
1:D:234:SER:HB3	1:D:237:GLU:HG3	1.89	0.54
1:D:616:HIS:HD2	1:D:631:ILE:HG12	1.71	0.54
1:B:484:ILE:O	1:B:488:THR:OG1	2.25	0.54
1:C:662:MET:HA	1:C:681:TYR:CE2	2.42	0.54
2:H:559:GLU:HB2	2:H:571:LEU:HD11	1.89	0.54
2:H:677:HIS:HB3	2:H:684:LYS:HD2	1.89	0.54
1:A:625:GLU:O	1:A:678:PHE:HD1	1.90	0.54
1:A:626:GLY:N	1:A:678:PHE:CE1	2.75	0.54
1:B:662:MET:HG3	1:B:681:TYR:HD2	1.71	0.54
1:G:365:ARG:NH1	1:G:412:PRO:O	2.40	0.54
1:A:425:ASP:HB2	1:A:430:THR:HB	1.90	0.54
1:F:631:ILE:O	1:F:636:ARG:NH2	2.37	0.54
2:H:403:GLU:OE1	2:H:407:GLN:NE2	2.40	0.54
2:H:475:ILE:HD11	2:H:480:TRP:HE1	1.73	0.54
1:F:627:LEU:HB3	1:F:676:ILE:HB	1.88	0.54
2:H:624:ILE:O	2:H:672:TYR:OH	2.25	0.54
2:H:635:SER:HA	2:H:638:ARG:HG2	1.89	0.54
1:A:232:PRO:HD3	1:A:480:VAL:HG11	1.90	0.53
1:B:633:LYS:HA	1:B:636:ARG:HB2	1.90	0.53
1:G:312:SER:HB2	1:G:315:ASP:HB2	1.90	0.53
1:B:389:GLN:HE21	1:B:438:GLN:HE21	1.56	0.53
1:G:698:VAL:HB	1:G:727:PHE:HB3	1.89	0.53
1:A:174:THR:OG1	1:A:175:VAL:N	2.41	0.53
1:G:232:PRO:HD3	1:G:480:VAL:HG11	1.90	0.53
1:G:646:ILE:CG1	1:G:687:LEU:HD23	2.39	0.53
1:B:600:ARG:HA	1:B:600:ARG:HH11	1.73	0.53
1:G:179:ASP:N	1:G:179:ASP:OD1	2.38	0.53
2:H:66:GLU:HG2	2:H:250:LEU:HB3	1.89	0.53

Continued on next page...

Continued from previous page...

Atom-1	Atom-2	Interatomic distance (Å)	Clash overlap (Å)
1:A:678:PHE:CD1	1:A:678:PHE:N	2.73	0.53
1:B:435:ASN:ND2	1:C:272:SER:OG	2.41	0.53
1:D:179:ASP:OD1	1:D:179:ASP:N	2.33	0.53
1:F:642:TYR:HB2	1:F:665:ILE:HD11	1.91	0.53
1:G:592:ARG:NH1	1:G:602:ASN:OD1	2.42	0.53
1:C:646:ILE:HG23	1:C:696:VAL:HG12	1.91	0.53
1:E:649:THR:OG1	1:E:693:ASN:ND2	2.42	0.53
1:B:276:ASP:OD1	1:B:276:ASP:N	2.39	0.52
1:C:336:HIS:O	1:D:292:ASN:ND2	2.42	0.52
1:D:665:ILE:HA	1:D:680:LYS:HE3	1.89	0.52
1:G:309:VAL:HA	1:G:318:GLY:HA2	1.91	0.52
2:H:377:ILE:HG23	2:H:413:ILE:HD12	1.91	0.52
1:A:296:SER:HB3	1:A:331:THR:HB	1.92	0.52
2:H:77:ASP:OD1	2:H:77:ASP:N	2.33	0.52
2:H:286:ALA:HB1	2:H:565:PRO:HA	1.91	0.52
2:H:152:ASP:OD1	2:H:152:ASP:N	2.39	0.52
1:A:365:ARG:NH1	1:A:412:PRO:O	2.42	0.52
1:A:715:ASP:OD2	1:A:719:ASN:ND2	2.42	0.52
1:B:598:TYR:HB3	1:B:602:ASN:HA	1.91	0.52
2:H:747:LEU:HD21	2:H:760:PHE:HB2	1.92	0.52
1:C:620:ILE:HB	1:C:628:LEU:HB3	1.92	0.52
2:H:275:VAL:HB	2:H:278:HIS:HB2	1.92	0.52
1:B:269:ILE:HG21	1:B:448:LEU:HD23	1.91	0.52
1:C:484:ILE:O	1:C:488:THR:OG1	2.25	0.52
1:D:627:LEU:HD23	1:D:676:ILE:HG13	1.91	0.52
2:H:689:ILE:HG13	2:H:760:PHE:CZ	2.44	0.52
1:B:642:TYR:O	1:B:657:ASN:ND2	2.44	0.51
2:H:430:THR:HG22	2:H:432:LEU:H	1.76	0.51
2:H:294:LEU:CD1	2:H:294:LEU:N	2.73	0.51
2:H:513:LYS:HD3	2:H:521:LYS:HG2	1.92	0.51
2:H:517:SER:O	2:H:521:LYS:N	2.40	0.51
1:B:621:ASN:HB2	1:B:628:LEU:H	1.75	0.51
1:D:315:ASP:N	1:D:315:ASP:OD1	2.40	0.51
1:A:178:ARG:NH1	1:A:224:GLU:OE2	2.44	0.51
1:E:482:PRO:HG2	1:F:404:ILE:HD13	1.92	0.51
2:H:370:LEU:HD13	2:H:420:VAL:H	1.75	0.51
1:A:679:LYS:HE2	1:A:685:LEU:HA	1.92	0.51
2:H:634:LEU:O	2:H:712:TYR:OH	2.27	0.51
2:H:281:ALA:HA	2:H:284:LYS:HE2	1.91	0.51
1:A:623:SER:O	1:A:678:PHE:HZ	1.92	0.51
1:D:523:LEU:HD13	1:D:583:LEU:HD21	1.93	0.51

Continued on next page...

Continued from previous page...

Atom-1	Atom-2	Interatomic distance (Å)	Clash overlap (Å)
1:F:232:PRO:HD3	1:F:480:VAL:HG11	1.93	0.51
1:F:628:LEU:CD1	1:F:669:ARG:HH22	2.24	0.51
2:H:40:ASN:HD22	2:H:43:LEU:HD22	1.76	0.51
2:H:312:THR:HA	2:H:456:THR:H	1.76	0.51
2:H:764:ILE:N	2:H:764:ILE:CD1	2.73	0.50
1:G:626:GLY:HA2	1:G:677:ASP:HA	1.92	0.50
2:H:60:VAL:HG13	2:H:144:ILE:HD13	1.92	0.50
2:H:425:LYS:HB2	2:H:428:LYS:HG2	1.93	0.50
2:H:515:THR:OG1	2:H:549:ASP:OD2	2.29	0.50
1:F:337:SER:OG	1:F:338:LEU:N	2.44	0.50
2:H:40:ASN:HD22	2:H:43:LEU:HB2	1.73	0.50
1:D:625:GLU:HG3	1:D:686:PRO:HB3	1.93	0.50
1:E:207:ILE:O	1:E:211:HIS:ND1	2.45	0.50
1:E:628:LEU:HG	1:E:675:PHE:HB2	1.93	0.50
2:H:710:PRO:O	2:H:714:ASN:ND2	2.44	0.50
1:G:368:ASN:HB2	1:G:405:LEU:HG	1.93	0.50
1:B:463:ASN:ND2	1:B:466:ASN:OD1	2.45	0.50
1:D:287:ARG:HG2	1:D:340:LEU:HD22	1.93	0.50
1:A:276:ASP:OD1	1:A:276:ASP:N	2.42	0.49
2:H:294:LEU:HB3	2:H:462:PHE:HB3	1.94	0.49
1:A:312:SER:HB2	1:A:315:ASP:HB2	1.94	0.49
1:D:222:SER:HB3	1:D:225:LYS:HB2	1.93	0.49
1:G:711:SER:HB2	1:G:715:ASP:HB3	1.93	0.49
1:B:224:GLU:HG3	1:B:517:THR:HG21	1.93	0.49
1:B:551:ASP:OD1	1:B:551:ASP:N	2.44	0.49
1:C:304:HIS:N	1:C:323:GLY:O	2.45	0.49
1:D:482:PRO:HG2	1:E:404:ILE:HD13	1.95	0.49
2:H:312:THR:HG22	2:H:456:THR:HB	1.94	0.49
1:C:662:MET:CB	1:C:681:TYR:CE2	2.96	0.49
1:D:595:ARG:HH11	1:D:611:VAL:HG21	1.77	0.49
1:A:679:LYS:CE	1:A:685:LEU:CA	2.90	0.49
1:E:627:LEU:HB3	1:E:629:LEU:HD23	1.93	0.49
2:H:294:LEU:N	2:H:294:LEU:HD13	2.26	0.49
2:H:375:LEU:HD11	2:H:378:GLU:CB	2.42	0.49
1:B:643:ILE:HA	1:B:657:ASN:HD21	1.78	0.49
1:F:646:ILE:HD11	1:F:687:LEU:HG	1.94	0.49
1:G:627:LEU:HB3	1:G:676:ILE:HG13	1.94	0.49
1:A:269:ILE:HD11	1:A:360:LEU:HD22	1.94	0.49
1:A:659:ARG:HD3	1:A:661:ASP:HB2	1.95	0.49
1:B:665:ILE:HG22	1:B:680:LYS:HD3	1.94	0.49
1:D:622:SER:HA	1:D:627:LEU:HD12	1.95	0.49

Continued on next page...

Continued from previous page...

Atom-1	Atom-2	Interatomic distance (Å)	Clash overlap (Å)
1:E:647:GLU:HB2	1:E:697:ASN:HD21	1.78	0.49
2:H:323:ASP:OD1	2:H:323:ASP:N	2.43	0.49
1:C:551:ASP:OD1	1:C:551:ASP:N	2.45	0.48
1:E:210:ILE:O	1:E:213:LYS:HG3	2.12	0.48
1:F:179:ASP:OD1	1:F:179:ASP:N	2.42	0.48
1:F:648:ASP:HB2	1:F:652:LEU:HB2	1.94	0.48
1:G:616:HIS:HB3	1:G:629:LEU:HD21	1.94	0.48
1:D:232:PRO:HD3	1:D:480:VAL:HG11	1.94	0.48
2:H:412:ARG:HD2	2:H:423:LYS:HG2	1.94	0.48
2:H:572:THR:HG21	2:H:578:THR:HG22	1.93	0.48
1:B:505:ILE:HD13	1:B:526:ALA:HB1	1.95	0.48
1:G:425:ASP:OD2	1:G:429:SER:OG	2.30	0.48
1:A:299:HIS:O	1:G:330:SER:N	2.43	0.48
1:C:269:ILE:HG21	1:C:448:LEU:HD23	1.94	0.48
2:H:448:VAL:HB	2:H:451:VAL:HB	1.96	0.48
1:D:711:SER:HB2	1:D:715:ASP:HB3	1.95	0.48
1:G:276:ASP:OD1	1:G:276:ASP:N	2.41	0.48
1:G:616:HIS:HE2	1:G:642:TYR:HH	1.62	0.48
2:H:757:PHE:O	2:H:761:GLN:N	2.39	0.48
1:B:265:ASP:OD1	1:B:265:ASP:N	2.46	0.48
1:E:250:GLU:OE2	1:E:503:ARG:NH2	2.46	0.48
1:F:425:ASP:OD2	1:F:429:SER:OG	2.32	0.48
1:G:627:LEU:HD22	1:G:676:ILE:HD11	1.95	0.48
1:C:335:ASP:N	1:C:335:ASP:OD1	2.47	0.48
1:B:476:ASN:ND2	1:B:478:SER:OG	2.46	0.48
1:E:639:LEU:HA	1:E:702:THR:HA	1.96	0.48
1:F:460:ALA:HB2	1:F:471:VAL:HG22	1.95	0.48
2:H:292:TYR:O	2:H:294:LEU:HD13	2.13	0.48
2:H:148:ILE:HG21	2:H:238:LEU:HD21	1.95	0.47
1:A:629:LEU:HB3	1:A:631:ILE:HG13	1.96	0.47
1:B:179:ASP:N	1:B:179:ASP:OD1	2.37	0.47
1:A:679:LYS:HE3	1:A:685:LEU:C	2.34	0.47
1:B:642:TYR:HB2	1:B:665:ILE:HD11	1.96	0.47
1:C:227:SER:OG	1:C:231:ASP:OD1	2.31	0.47
1:C:298:THR:HB	1:C:329:SER:HB3	1.97	0.47
1:D:425:ASP:OD2	1:D:429:SER:OG	2.33	0.47
1:F:331:THR:HG23	1:G:298:THR:HG22	1.96	0.47
1:D:612:VAL:HG11	1:D:724:ILE:HD12	1.97	0.47
1:E:605:VAL:HG23	1:E:703:LYS:HE3	1.97	0.47
2:H:367:LYS:HA	2:H:367:LYS:HD3	1.63	0.47
2:H:368:ILE:HG12	2:H:445:ALA:HB2	1.96	0.47

Continued on next page...

Continued from previous page...

Atom-1	Atom-2	Interatomic distance (Å)	Clash overlap (Å)
1:C:287:ARG:HG2	1:C:340:LEU:HD22	1.97	0.47
1:F:488:THR:HG22	1:F:506:ALA:HA	1.97	0.47
1:F:497:ASP:O	1:F:637:LYS:NZ	2.43	0.47
1:B:638:ILE:HG13	1:B:639:LEU:HD22	1.96	0.47
2:H:185:LEU:CD1	2:H:196:PHE:HE2	2.28	0.47
2:H:202:THR:OG1	2:H:203:GLU:OE2	2.33	0.47
1:F:276:ASP:OD1	1:F:276:ASP:N	2.37	0.47
1:F:554:PHE:HB2	1:F:559:SER:HB3	1.97	0.47
1:E:269:ILE:HD11	1:E:360:LEU:HD22	1.97	0.47
2:H:458:ASP:OD1	2:H:458:ASP:N	2.48	0.47
1:A:271:LEU:HD13	1:A:439:PHE:HE1	1.81	0.46
2:H:385:ILE:O	2:H:405:ASN:ND2	2.41	0.46
1:C:659:ARG:HA	1:C:716:THR:O	2.15	0.46
2:H:54:LYS:HB3	2:H:767:LYS:HD2	1.98	0.46
2:H:407:GLN:HE21	2:H:425:LYS:HE2	1.80	0.46
1:A:343:GLU:OE2	1:B:284:SER:OG	2.34	0.46
1:B:494:ASN:HB3	1:B:500:LEU:HD23	1.98	0.46
1:D:326:ASN:H	1:E:303:VAL:HB	1.79	0.46
1:E:183:ILE:HD12	1:E:203:LEU:HD11	1.98	0.46
1:G:597:HIS:ND1	1:G:606:GLY:O	2.43	0.46
2:H:268:ALA:HB2	2:H:571:LEU:HB2	1.98	0.46
2:H:288:GLU:OE2	2:H:526:ARG:NH2	2.49	0.46
1:A:659:ARG:HA	1:A:717:SER:HA	1.97	0.46
1:C:682:ASN:C	1:C:684:LYS:N	2.69	0.46
1:D:222:SER:OG	1:D:517:THR:OG1	2.34	0.46
1:E:636:ARG:HH22	1:E:668:LEU:HD23	1.80	0.46
1:G:600:ARG:HA	1:G:600:ARG:HD3	1.68	0.46
1:A:323:GLY:HA3	1:B:306:ASN:HA	1.96	0.46
1:C:308:GLU:HB2	1:C:319:SER:HB3	1.98	0.45
1:C:598:TYR:HB3	1:C:602:ASN:HA	1.97	0.45
1:E:179:ASP:N	1:E:179:ASP:OD1	2.46	0.45
1:F:699:TYR:HA	1:F:726:ILE:HB	1.99	0.45
1:B:631:ILE:HB	1:B:636:ARG:HG3	1.97	0.45
1:F:702:THR:OG1	1:F:703:LYS:N	2.50	0.45
2:H:466:PRO:HG2	2:H:471:ILE:HD11	1.96	0.45
2:H:564:ASN:OD1	2:H:568:GLU:N	2.49	0.45
1:A:645:GLU:HB2	1:A:655:VAL:HA	1.98	0.45
1:E:460:ALA:HB2	1:E:471:VAL:HG22	1.98	0.45
2:H:109:VAL:HG11	2:H:136:VAL:HG22	1.98	0.45
2:H:627:SER:HA	2:H:630:PHE:HB3	1.98	0.45
1:G:494:ASN:HB3	1:G:500:LEU:HD23	1.97	0.45

Continued on next page...

Continued from previous page...

Atom-1	Atom-2	Interatomic distance (Å)	Clash overlap (Å)
2:H:115:GLU:HG2	2:H:116:THR:HG22	1.99	0.45
1:A:494:ASN:HB3	1:A:500:LEU:HD23	1.97	0.45
1:A:616:HIS:HE2	1:A:642:TYR:HH	1.62	0.45
1:A:665:ILE:HA	1:A:681:TYR:HE2	1.80	0.45
1:A:679:LYS:HE2	1:A:685:LEU:CA	2.46	0.45
1:A:715:ASP:OD1	1:A:715:ASP:N	2.48	0.45
1:C:723:LYS:HB3	1:C:723:LYS:HE3	1.81	0.45
1:A:626:GLY:HA2	1:A:678:PHE:CD1	2.52	0.45
1:C:460:ALA:HB2	1:C:471:VAL:HG22	1.99	0.45
2:H:84:LEU:HD23	2:H:104:PHE:HZ	1.81	0.45
1:B:232:PRO:HD3	1:B:480:VAL:HG11	1.99	0.45
1:C:302:GLU:HG3	1:C:325:SER:HB2	1.98	0.45
1:D:292:ASN:HB3	1:D:335:ASP:HB3	1.98	0.45
1:D:554:PHE:HB2	1:D:559:SER:HB3	1.98	0.45
1:E:630:ASN:HA	1:E:673:LYS:HA	1.99	0.45
1:A:625:GLU:HG3	1:A:686:PRO:HB3	1.99	0.45
2:H:747:LEU:CD2	2:H:760:PHE:HB2	2.47	0.45
1:C:641:GLY:HA3	1:C:663:LEU:HB3	1.99	0.45
2:H:499:LEU:O	2:H:503:TYR:HB2	2.17	0.45
1:C:579:ASP:OD1	1:C:579:ASP:N	2.48	0.45
1:D:302:GLU:OE2	1:D:325:SER:OG	2.34	0.45
1:D:618:GLU:HB3	1:D:630:ASN:HB3	1.98	0.45
1:E:539:ASN:N	1:E:539:ASN:OD1	2.48	0.45
1:G:573:ASN:HB3	1:G:576:THR:HG23	1.99	0.45
1:E:554:PHE:HB2	1:E:559:SER:HB3	1.98	0.44
1:A:624:THR:HB	1:A:687:LEU:HB3	1.98	0.44
1:C:668:LEU:HA	1:C:674:THR:HA	1.99	0.44
2:H:104:PHE:HA	2:H:107:ARG:HG3	1.99	0.44
1:E:232:PRO:HD3	1:E:480:VAL:HG11	1.99	0.44
2:H:394:ASP:OD1	2:H:412:ARG:NH2	2.51	0.44
2:H:583:GLU:OE2	2:H:622:ASN:ND2	2.43	0.44
1:A:620:ILE:HG13	1:A:621:ASN:H	1.83	0.44
1:C:174:THR:OG1	1:C:175:VAL:N	2.50	0.44
1:D:596:PHE:HA	1:D:607:ALA:HA	1.99	0.44
2:H:408:VAL:HG21	2:H:431:VAL:HG13	1.99	0.44
1:A:554:PHE:HB3	1:A:558:THR:HB	2.00	0.44
1:C:284:SER:HB3	1:C:343:GLU:HB3	2.00	0.44
1:B:425:ASP:HB2	1:B:430:THR:HB	2.00	0.44
1:B:515:GLU:HG3	1:B:518:LYS:HE2	2.00	0.44
1:B:664:ASN:OD1	1:B:680:LYS:NZ	2.37	0.44
1:C:296:SER:O	1:C:331:THR:N	2.51	0.44

Continued on next page...

Continued from previous page...

Atom-1	Atom-2	Interatomic distance (Å)	Clash overlap (Å)
1:C:365:ARG:NH1	1:C:413:SER:O	2.50	0.44
1:C:444:LYS:HB3	1:C:444:LYS:HE2	1.79	0.44
1:F:639:LEU:HD23	1:F:702:THR:HB	2.00	0.44
2:H:155:LEU:HD22	2:H:160:LEU:HD13	2.00	0.44
2:H:479:GLU:OE2	2:H:503:TYR:OH	2.25	0.44
1:B:203:LEU:HD22	2:H:34:VAL:HG12	1.99	0.43
1:B:612:VAL:HG11	1:B:724:ILE:HD12	1.99	0.43
1:B:641:GLY:O	1:B:701:VAL:N	2.51	0.43
1:E:423:ALA:HB1	1:E:428:SER:HA	1.99	0.43
1:A:368:ASN:HB2	1:A:405:LEU:HG	1.99	0.43
1:F:711:SER:OG	1:F:712:GLU:N	2.51	0.43
2:H:185:LEU:HD13	2:H:196:PHE:HE2	1.83	0.43
2:H:760:PHE:CD1	2:H:760:PHE:C	2.91	0.43
1:B:700:ALA:HB3	1:B:724:ILE:HG13	2.00	0.43
1:A:183:ILE:HG23	1:A:203:LEU:HD21	2.00	0.43
1:G:537:ASN:N	1:G:537:ASN:OD1	2.51	0.43
1:B:329:SER:OG	1:B:330:SER:N	2.50	0.43
1:E:494:ASN:HD21	1:E:592:ARG:HG2	1.84	0.43
1:F:540:LEU:HD12	1:F:540:LEU:HA	1.90	0.43
2:H:182:LYS:HE3	2:H:182:LYS:HB2	1.81	0.43
1:D:646:ILE:HB	1:D:654:GLU:HB3	2.01	0.43
1:E:325:SER:OG	1:F:303:VAL:O	2.33	0.43
1:F:560:GLN:OE1	1:F:564:ASN:ND2	2.51	0.43
1:G:579:ASP:OD1	1:G:579:ASP:N	2.41	0.43
1:F:646:ILE:HG12	1:F:696:VAL:HG12	2.00	0.43
2:H:587:THR:O	2:H:684:LYS:NZ	2.52	0.43
2:H:590:ASP:OD1	2:H:681:GLN:NE2	2.52	0.43
1:D:590:LEU:HD21	1:D:602:ASN:HD21	1.83	0.43
1:D:616:HIS:CD2	1:D:631:ILE:HG12	2.51	0.43
2:H:145:SER:OG	2:H:146:LEU:N	2.52	0.43
2:H:315:LEU:HB2	2:H:511:SER:HB3	2.00	0.43
2:H:392:GLU:HB2	2:H:401:LEU:HD22	2.00	0.43
2:H:447:ASN:OD1	2:H:447:ASN:N	2.50	0.43
1:A:722:LYS:HG3	1:A:724:ILE:HG13	2.00	0.42
1:F:643:ILE:HB	1:F:699:TYR:HB2	2.01	0.42
2:H:112:LYS:O	2:H:118:LYS:N	2.48	0.42
2:H:292:TYR:HB3	2:H:562:ILE:HD11	2.01	0.42
2:H:752:ASN:OD1	2:H:752:ASN:N	2.50	0.42
1:A:731:GLY:HA2	1:A:734:ILE:HD12	2.01	0.42
1:F:653:LYS:HG3	1:F:655:VAL:HG13	2.01	0.42
1:A:626:GLY:CA	1:A:678:PHE:HE1	2.29	0.42

Continued on next page...

Continued from previous page...

Atom-1	Atom-2	Interatomic distance (Å)	Clash overlap (Å)
1:A:642:TYR:HE2	1:A:726:ILE:HG21	1.84	0.42
1:A:642:TYR:HB2	1:A:665:ILE:HG12	2.02	0.42
1:D:717:SER:OG	1:D:718:THR:N	2.52	0.42
1:G:617:ARG:HA	1:G:617:ARG:HD3	1.80	0.42
2:H:445:ALA:HA	2:H:454:PRO:HA	2.00	0.42
1:A:679:LYS:NZ	1:A:686:PRO:HD3	2.34	0.42
1:B:178:ARG:HH22	1:C:202:PHE:HE1	1.67	0.42
1:F:627:LEU:HD23	1:F:676:ILE:HD12	2.01	0.42
1:G:616:HIS:NE2	1:G:642:TYR:OH	2.46	0.42
2:H:301:LEU:HA	2:H:376:ARG:HH22	1.84	0.42
2:H:596:ASN:OD1	2:H:596:ASN:N	2.46	0.42
1:E:380:THR:HB	1:E:454:GLN:HG2	2.02	0.42
1:E:582:LYS:HA	1:E:582:LYS:HD3	1.88	0.42
1:G:335:ASP:O	1:G:336:HIS:ND1	2.52	0.42
2:H:188:ASN:O	2:H:191:SER:HB2	2.19	0.42
1:C:282:THR:HB	1:C:345:THR:HB	2.01	0.42
1:G:658:ASP:OD1	1:G:717:SER:OG	2.37	0.42
2:H:655:PHE:HA	2:H:658:LYS:HB3	2.01	0.42
1:B:365:ARG:NH1	1:B:412:PRO:O	2.53	0.42
1:C:213:LYS:HD3	1:C:214:LYS:CG	2.47	0.42
1:C:271:LEU:HD13	1:C:439:PHE:HE1	1.85	0.42
1:C:708:ILE:H	1:C:708:ILE:HG13	1.63	0.42
1:F:648:ASP:OD1	1:F:649:THR:N	2.53	0.42
2:H:499:LEU:HA	2:H:502:LYS:HE3	2.02	0.42
1:B:207:ILE:H	1:B:211:HIS:CE1	2.38	0.42
1:A:671:ASP:O	1:A:673:LYS:NZ	2.38	0.42
1:A:679:LYS:HE3	1:A:685:LEU:CA	2.50	0.42
1:B:488:THR:HG22	1:B:506:ALA:HA	2.02	0.42
1:F:551:ASP:HB3	1:F:594:LYS:HE3	2.02	0.42
2:H:391:LYS:HG3	2:H:398:LYS:HE2	2.00	0.42
2:H:663:LYS:HA	2:H:663:LYS:HD3	1.77	0.42
2:H:618:LYS:HE2	2:H:618:LYS:HB2	1.92	0.42
1:C:599:ASP:OD1	1:C:599:ASP:N	2.41	0.41
1:D:327:SER:HA	1:E:302:GLU:HA	2.02	0.41
1:E:702:THR:OG1	1:E:703:LYS:N	2.53	0.41
1:G:199:LYS:HA	1:G:199:LYS:HD3	1.83	0.41
2:H:343:GLN:HB3	2:H:346:ALA:HB3	2.01	0.41
1:D:295:THR:HG22	1:D:332:VAL:HG13	2.03	0.41
1:E:365:ARG:NH1	1:E:412:PRO:O	2.53	0.41
1:F:231:ASP:OD1	1:F:231:ASP:N	2.50	0.41
1:G:484:ILE:O	1:G:488:THR:OG1	2.28	0.41

Continued on next page...

Continued from previous page...

Atom-1	Atom-2	Interatomic distance (Å)	Clash overlap (Å)
1:G:648:ASP:HB2	1:G:652:LEU:HB2	2.01	0.41
2:H:275:VAL:HA	2:H:276:PRO:HD3	1.96	0.41
1:B:196:VAL:HG22	1:B:201:THR:HG22	2.02	0.41
1:B:642:TYR:HA	1:B:700:ALA:HA	2.02	0.41
1:D:730:LYS:HD2	1:D:730:LYS:HA	1.87	0.41
1:E:688:TYR:O	1:E:694:TYR:OH	2.37	0.41
1:F:640:SER:N	1:F:701:VAL:O	2.52	0.41
1:F:647:GLU:N	1:F:695:LYS:O	2.53	0.41
1:A:679:LYS:HE3	1:A:686:PRO:N	2.35	0.41
1:B:405:LEU:HD12	1:B:405:LEU:HA	1.89	0.41
1:B:622:SER:O	1:B:622:SER:OG	2.35	0.41
1:C:563:LYS:HD3	1:C:563:LYS:HA	1.75	0.41
1:D:282:THR:HB	1:D:345:THR:HB	2.01	0.41
1:E:534:ASN:OD1	1:E:534:ASN:N	2.52	0.41
1:F:606:GLY:HA3	1:F:704:GLU:HB2	2.02	0.41
1:F:609:GLU:N	1:F:609:GLU:OE2	2.52	0.41
2:H:468:LEU:HD22	2:H:677:HIS:HE1	1.86	0.41
1:C:179:ASP:OD1	1:C:179:ASP:N	2.33	0.41
1:C:276:ASP:OD1	1:C:276:ASP:N	2.45	0.41
1:C:395:LYS:O	1:C:397:LYS:NZ	2.44	0.41
1:A:404:ILE:HD13	1:G:482:PRO:HG2	2.01	0.41
1:D:365:ARG:NH1	1:D:412:PRO:O	2.53	0.41
1:D:545:LYS:NZ	1:D:549:GLU:OE1	2.40	0.41
1:D:612:VAL:HG22	1:D:635:ILE:HD11	2.02	0.41
1:F:578:LEU:HD23	1:F:578:LEU:HA	1.90	0.41
1:G:711:SER:CB	1:G:715:ASP:HB3	2.51	0.41
2:H:307:LYS:HB3	2:H:307:LYS:HE2	1.84	0.41
2:H:720:LYS:HA	2:H:723:ILE:HG22	2.03	0.41
1:D:677:ASP:O	1:D:680:LYS:NZ	2.40	0.41
1:E:524:LYS:HD3	1:E:579:ASP:HB3	2.02	0.41
2:H:75:ASP:HB3	2:H:123:ILE:HD11	2.03	0.41
2:H:681:GLN:HG3	2:H:684:LYS:HD3	2.03	0.41
1:A:659:ARG:HH11	1:A:661:ASP:HB2	1.86	0.41
1:D:183:ILE:HA	1:D:184:PRO:HD3	1.85	0.41
1:D:623:SER:OG	1:D:626:GLY:O	2.30	0.41
1:A:657:ASN:OD1	1:A:657:ASN:N	2.54	0.41
1:A:678:PHE:HD1	1:A:678:PHE:H	1.63	0.41
1:C:684:LYS:HB3	1:C:684:LYS:HE3	1.88	0.41
1:E:222:SER:HG	1:E:517:THR:HG1	1.69	0.41
1:E:540:LEU:HB3	1:E:547:ILE:HB	2.02	0.41
1:E:646:ILE:HB	1:E:654:GLU:HB2	2.02	0.41

Continued on next page...

Continued from previous page...

Atom-1	Atom-2	Interatomic distance (Å)	Clash overlap (Å)
1:F:509:ASN:HA	1:F:510:PRO:HD3	1.93	0.41
1:G:632:ASP:HB3	1:G:635:ILE:HG22	2.03	0.41
2:H:164:LYS:HD2	2:H:164:LYS:HA	1.75	0.41
2:H:330:TYR:HE2	2:H:372:LEU:HB3	1.86	0.41
2:H:480:TRP:HA	2:H:483:VAL:HG12	2.02	0.41
2:H:691:ARG:HA	2:H:691:ARG:HD3	1.91	0.41
1:A:470:ARG:HD3	1:A:470:ARG:HA	1.88	0.41
1:B:460:ALA:HB2	1:B:471:VAL:HG22	2.02	0.41
1:C:208:SER:OG	1:C:212:GLU:OE1	2.39	0.41
1:D:627:LEU:HB3	1:D:676:ILE:HB	2.02	0.41
1:E:183:ILE:HA	1:E:184:PRO:HD3	1.90	0.41
1:B:638:ILE:O	1:B:703:LYS:NZ	2.54	0.40
1:E:209:ASN:OD1	1:E:209:ASN:N	2.53	0.40
1:A:179:ASP:OD1	1:A:179:ASP:N	2.36	0.40
1:A:335:ASP:N	1:A:335:ASP:OD1	2.53	0.40
1:B:183:ILE:HA	1:B:184:PRO:HD3	1.92	0.40
1:B:597:HIS:ND1	1:B:606:GLY:O	2.45	0.40
1:D:307:ALA:HA	1:D:320:VAL:HG12	2.03	0.40
1:E:327:SER:HB2	1:F:302:GLU:HB2	2.03	0.40
1:G:611:VAL:HA	1:G:614:GLU:HB2	2.04	0.40
2:H:444:MET:N	2:H:444:MET:SD	2.94	0.40
2:H:507:ARG:HD3	2:H:507:ARG:HA	1.88	0.40
1:D:357:THR:HG21	1:D:436:TYR:HD1	1.86	0.40
1:D:374:ILE:HG12	1:D:377:VAL:HG22	2.03	0.40
1:D:494:ASN:HB3	1:D:500:LEU:HD23	2.03	0.40
1:G:476:ASN:OD1	1:G:476:ASN:N	2.53	0.40
1:G:618:GLU:HG2	1:G:630:ASN:HB2	2.03	0.40
2:H:557:ASP:OD1	2:H:557:ASP:N	2.49	0.40
1:D:222:SER:HB2	1:D:228:THR:HG23	2.02	0.40
1:D:613:LYS:HA	1:D:726:ILE:HG22	2.03	0.40
1:D:661:ASP:OD1	1:D:661:ASP:N	2.52	0.40
1:F:644:VAL:HG11	1:F:678:PHE:HZ	1.85	0.40
2:H:312:THR:HB	2:H:458:ASP:HB3	2.03	0.40
2:H:758:GLU:O	2:H:762:LYS:HB2	2.22	0.40
1:C:389:GLN:HE21	1:C:438:GLN:HE21	1.70	0.40
1:C:423:ALA:HB1	1:C:428:SER:HA	2.03	0.40
1:C:488:THR:HG22	1:C:506:ALA:HA	2.04	0.40
1:D:488:THR:HG22	1:D:506:ALA:HA	2.03	0.40
1:D:537:ASN:OD1	1:D:537:ASN:N	2.52	0.40
1:G:620:ILE:HG21	1:G:628:LEU:HD23	2.03	0.40

There are no symmetry-related clashes.

5.3 Torsion angles

5.3.1 Protein backbone

In the following table, the Percentiles column shows the percent Ramachandran outliers of the chain as a percentile score with respect to all PDB entries followed by that with respect to all EM entries.

The Analysed column shows the number of residues for which the backbone conformation was analysed, and the total number of residues.

Mol	Chain	Analysed	Favoured	Allowed	Outliers	Percentiles	
1	A	560/735 (76%)	524 (94%)	36 (6%)	0	100	100
1	B	560/735 (76%)	528 (94%)	32 (6%)	0	100	100
1	C	560/735 (76%)	527 (94%)	32 (6%)	1 (0%)	47	79
1	D	560/735 (76%)	522 (93%)	38 (7%)	0	100	100
1	E	560/735 (76%)	523 (93%)	37 (7%)	0	100	100
1	F	560/735 (76%)	521 (93%)	39 (7%)	0	100	100
1	G	560/735 (76%)	530 (95%)	30 (5%)	0	100	100
2	H	714/767 (93%)	663 (93%)	50 (7%)	1 (0%)	51	83
All	All	4634/5912 (78%)	4338 (94%)	294 (6%)	2 (0%)	100	100

All (2) Ramachandran outliers are listed below:

Mol	Chain	Res	Type
1	C	682	ASN
2	H	192	ILE

5.3.2 Protein sidechains

In the following table, the Percentiles column shows the percent sidechain outliers of the chain as a percentile score with respect to all PDB entries followed by that with respect to all EM entries.

The Analysed column shows the number of residues for which the sidechain conformation was analysed, and the total number of residues.

Mol	Chain	Analysed	Rotameric	Outliers	Percentiles	
1	A	501/661 (76%)	496 (99%)	5 (1%)	76	90
1	B	501/661 (76%)	500 (100%)	1 (0%)	93	98
1	C	501/661 (76%)	497 (99%)	4 (1%)	81	93

Continued on next page...

Continued from previous page...

Mol	Chain	Analysed	Rotameric	Outliers	Percentiles	
1	D	501/661 (76%)	499 (100%)	2 (0%)	91	95
1	E	501/661 (76%)	500 (100%)	1 (0%)	93	98
1	F	501/661 (76%)	497 (99%)	4 (1%)	81	93
1	G	501/661 (76%)	500 (100%)	1 (0%)	93	98
2	H	651/698 (93%)	632 (97%)	19 (3%)	42	74
All	All	4158/5325 (78%)	4121 (99%)	37 (1%)	79	91

All (37) residues with a non-rotameric sidechain are listed below:

Mol	Chain	Res	Type
1	A	200	ARG
1	A	213	LYS
1	A	678	PHE
1	A	679	LYS
1	A	680	LYS
1	B	600	ARG
1	C	213	LYS
1	C	496	LYS
1	C	680	LYS
1	C	681	TYR
1	D	303	VAL
1	D	636	ARG
1	E	309	VAL
1	F	563	LYS
1	F	659	ARG
1	F	669	ARG
1	F	696	VAL
1	G	287	ARG
2	H	39	THR
2	H	164	LYS
2	H	189	ASN
2	H	190	LYS
2	H	194	ILE
2	H	196	PHE
2	H	197	ILE
2	H	198	LYS
2	H	270	LYS
2	H	294	LEU
2	H	375	LEU
2	H	447	ASN

Continued on next page...

Continued from previous page...

Mol	Chain	Res	Type
2	H	626	THR
2	H	749	PHE
2	H	760	PHE
2	H	761	GLN
2	H	762	LYS
2	H	764	ILE
2	H	765	ASP

Sometimes sidechains can be flipped to improve hydrogen bonding and reduce clashes. All (54) such sidechains are listed below:

Mol	Chain	Res	Type
1	A	363	ASN
1	A	389	GLN
1	A	437	ASN
1	A	630	ASN
1	B	304	HIS
1	B	363	ASN
1	B	389	GLN
1	B	399	ASN
1	B	435	ASN
1	B	437	ASN
1	B	463	ASN
1	B	476	ASN
1	C	363	ASN
1	C	389	GLN
1	C	463	ASN
1	C	560	GLN
1	C	601	ASN
1	C	657	ASN
1	C	697	ASN
1	C	713	ASN
1	D	389	GLN
1	D	553	ASN
1	D	602	ASN
1	D	616	HIS
1	E	363	ASN
1	E	389	GLN
1	E	424	GLN
1	E	494	ASN
1	E	584	ASN
1	E	602	ASN
1	E	682	ASN

Continued on next page...

Continued from previous page...

Mol	Chain	Res	Type
1	E	691	ASN
1	E	693	ASN
1	E	719	ASN
1	F	304	HIS
1	F	363	ASN
1	F	389	GLN
1	F	557	GLN
1	F	560	GLN
1	F	564	ASN
1	F	719	ASN
1	G	363	ASN
1	G	389	GLN
1	G	437	ASN
1	G	584	ASN
2	H	188	ASN
2	H	205	GLN
2	H	354	ASN
2	H	406	ASN
2	H	528	ASN
2	H	642	ASN
2	H	677	HIS
2	H	714	ASN
2	H	726	GLN

5.3.3 RNA [i](#)

There are no RNA molecules in this entry.

5.4 Non-standard residues in protein, DNA, RNA chains [i](#)

There are no non-standard protein/DNA/RNA residues in this entry.

5.5 Carbohydrates [i](#)

There are no monosaccharides in this entry.

5.6 Ligand geometry [i](#)

Of 14 ligands modelled in this entry, 14 are monoatomic - leaving 0 for Mogul analysis.

There are no bond length outliers.

There are no bond angle outliers.

There are no chirality outliers.

There are no torsion outliers.

There are no ring outliers.

No monomer is involved in short contacts.

5.7 Other polymers [i](#)

There are no such residues in this entry.

5.8 Polymer linkage issues [i](#)

There are no chain breaks in this entry.

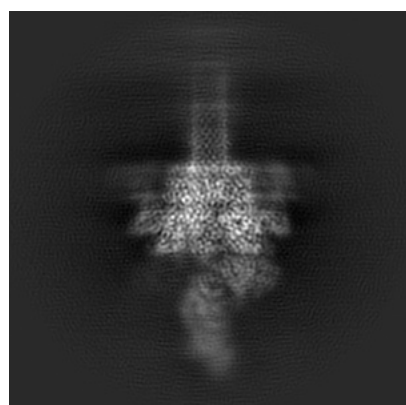
6 Map visualisation [i](#)

This section contains visualisations of the EMDB entry EMD-20955. These allow visual inspection of the internal detail of the map and identification of artifacts.

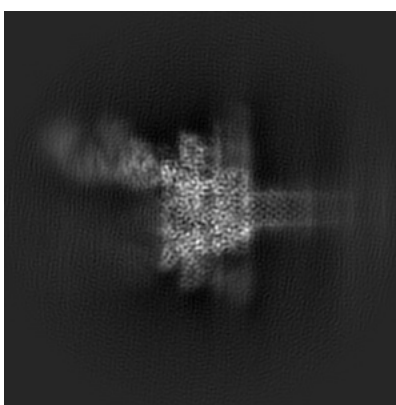
No raw map or half-maps were deposited for this entry and therefore no images, graphs, etc. pertaining to the raw map can be shown.

6.1 Orthogonal projections [i](#)

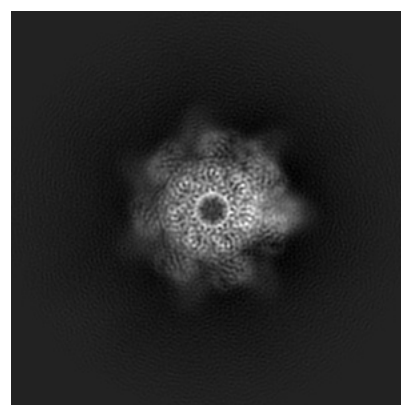
6.1.1 Primary map



X



Y

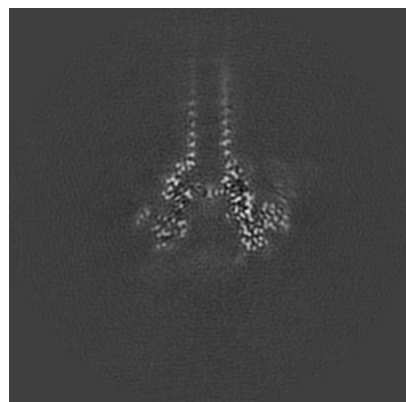


Z

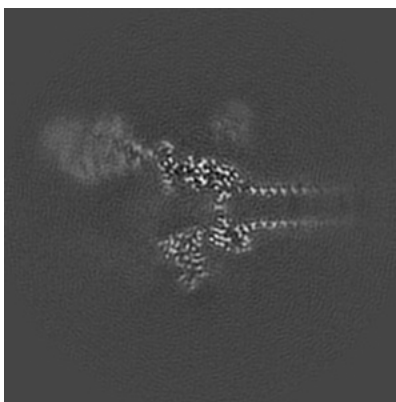
The images above show the map projected in three orthogonal directions.

6.2 Central slices [i](#)

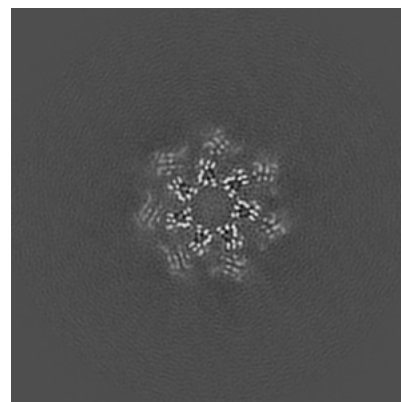
6.2.1 Primary map



X Index: 150



Y Index: 150

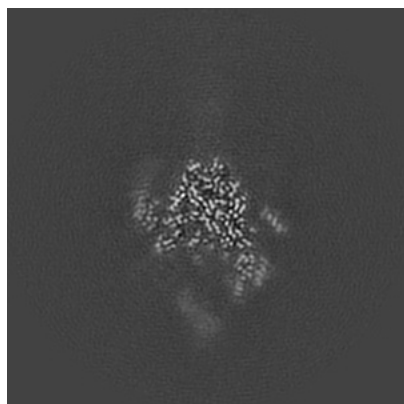


Z Index: 150

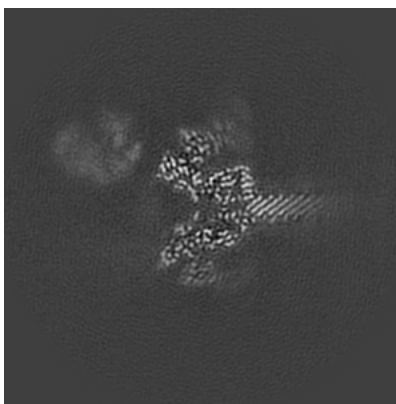
The images above show central slices of the map in three orthogonal directions.

6.3 Largest variance slices [i](#)

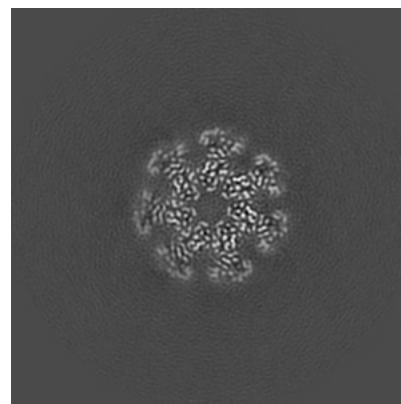
6.3.1 Primary map



X Index: 171



Y Index: 138



Z Index: 144

The images above show the largest variance slices of the map in three orthogonal directions.

6.4 Orthogonal surface views [i](#)

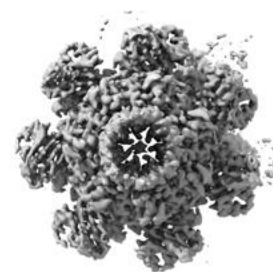
6.4.1 Primary map



X



Y



Z

The images above show the 3D surface view of the map at the recommended contour level 0.03. These images, in conjunction with the slice images, may facilitate assessment of whether an appropriate contour level has been provided.

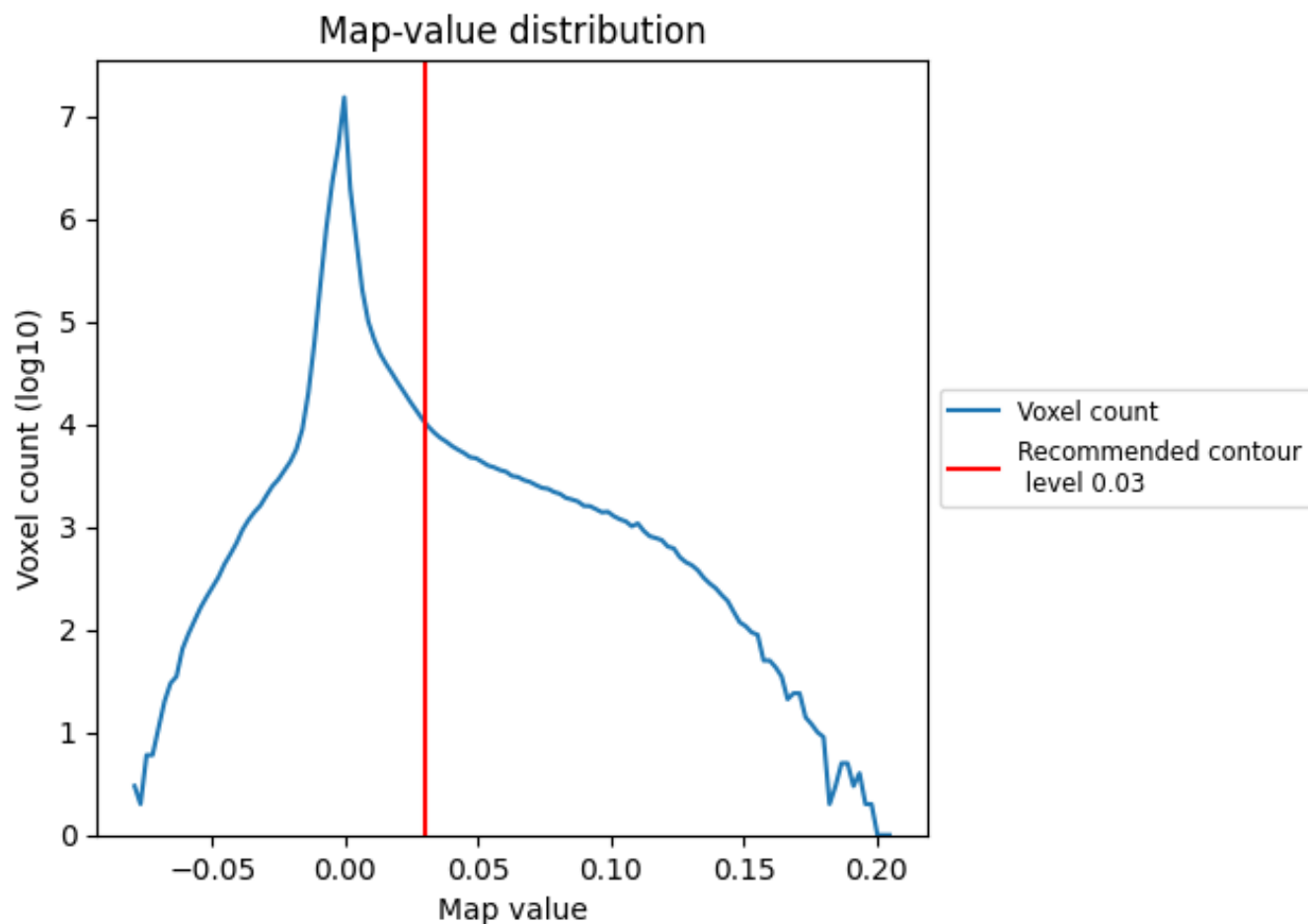
6.5 Mask visualisation

This section was not generated. No masks/segmentation were deposited.

7 Map analysis [i](#)

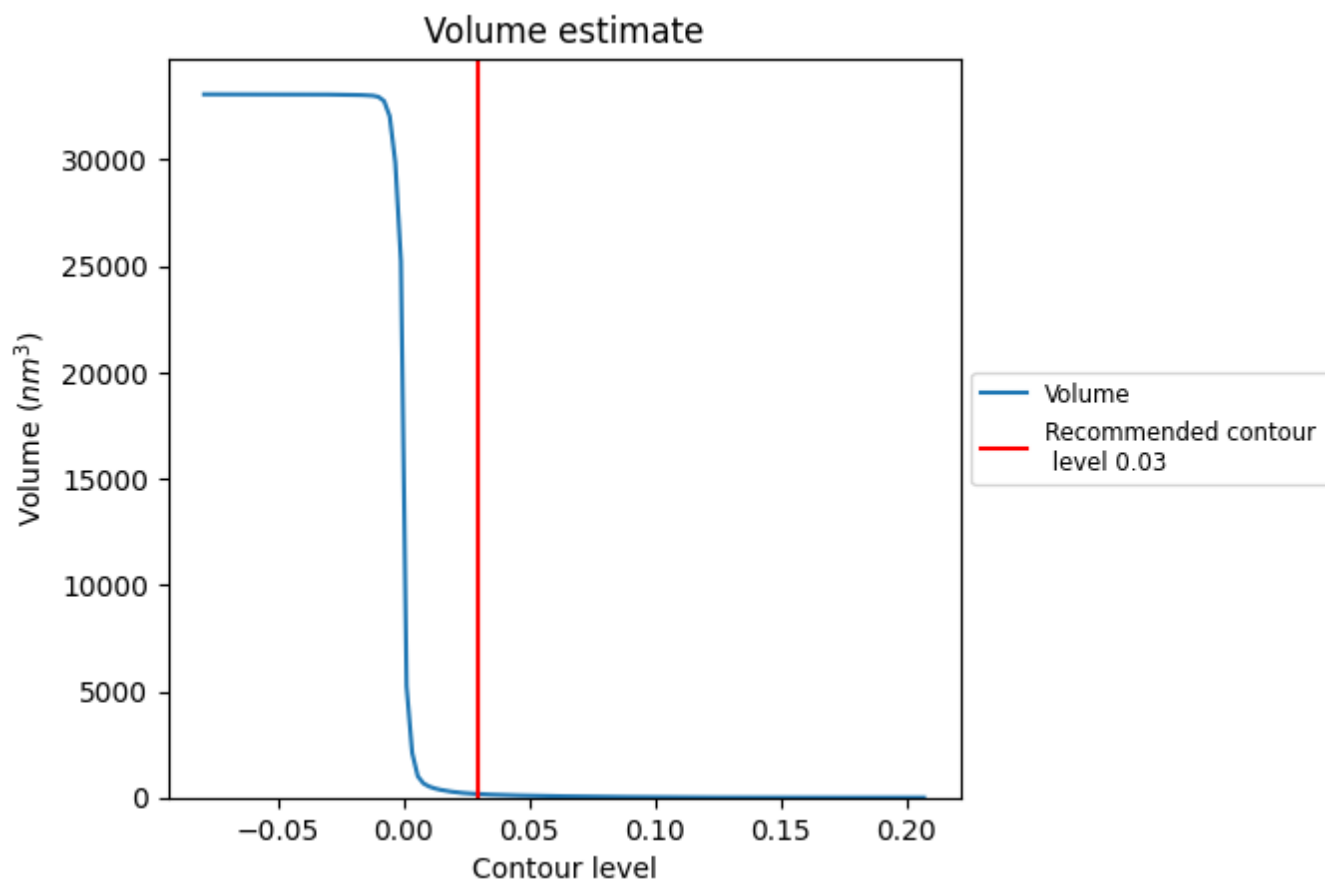
This section contains the results of statistical analysis of the map.

7.1 Map-value distribution [i](#)



The map-value distribution is plotted in 128 intervals along the x-axis. The y-axis is logarithmic. A spike in this graph at zero usually indicates that the volume has been masked.

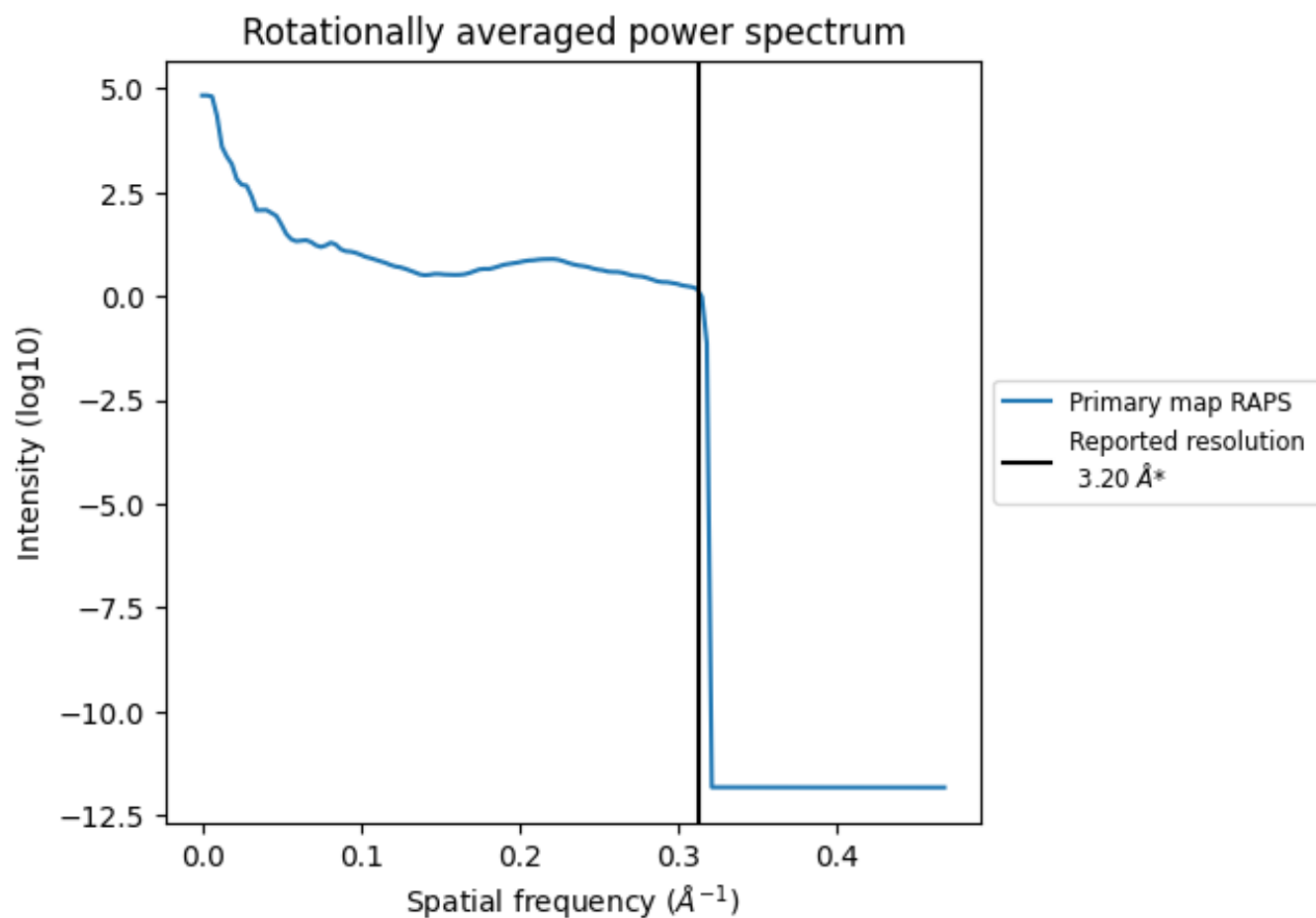
7.2 Volume estimate [i](#)



The volume at the recommended contour level is 165 nm^3 ; this corresponds to an approximate mass of 149 kDa.

The volume estimate graph shows how the enclosed volume varies with the contour level. The recommended contour level is shown as a vertical line and the intersection between the line and the curve gives the volume of the enclosed surface at the given level.

7.3 Rotationally averaged power spectrum ⓘ



*Reported resolution corresponds to spatial frequency of 0.312 Å⁻¹

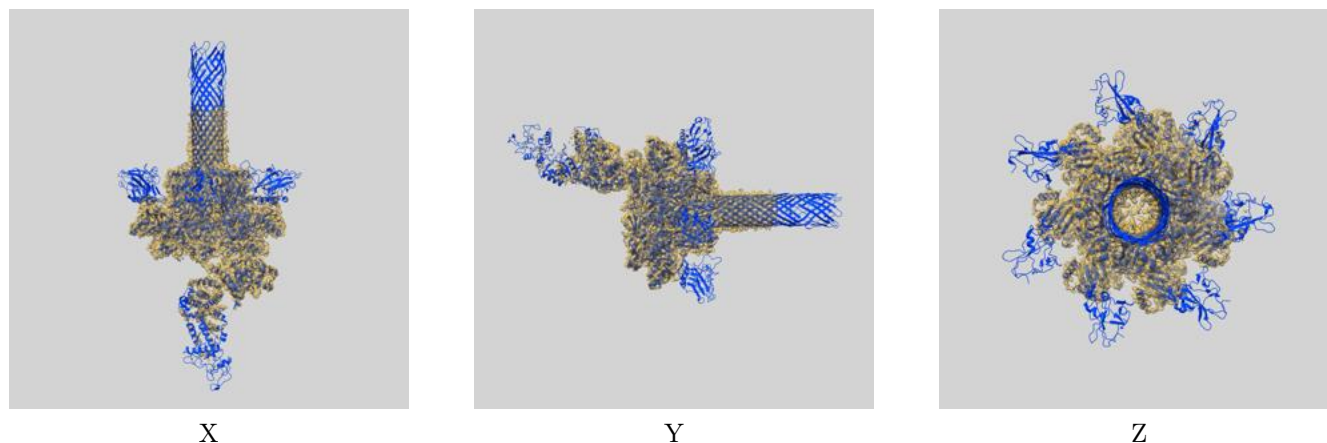
8 Fourier-Shell correlation ⓘ

This section was not generated. No FSC curve or half-maps provided.

9 Map-model fit [i](#)

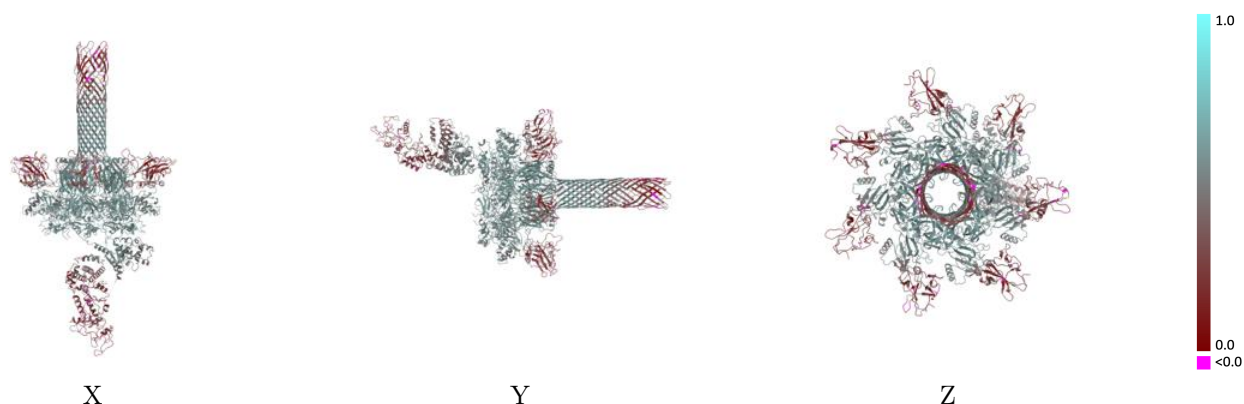
This section contains information regarding the fit between EMDB map EMD-20955 and PDB model 6UZB. Per-residue inclusion information can be found in section 3 on page 5.

9.1 Map-model overlay [i](#)



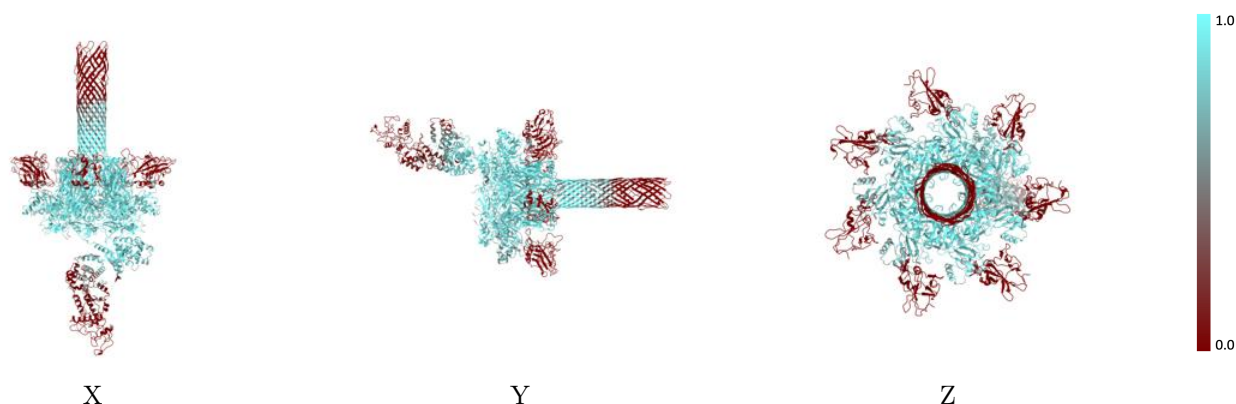
The images above show the 3D surface view of the map at the recommended contour level 0.03 at 50% transparency in yellow overlaid with a ribbon representation of the model coloured in blue. These images allow for the visual assessment of the quality of fit between the atomic model and the map.

9.2 Q-score mapped to coordinate model [i](#)



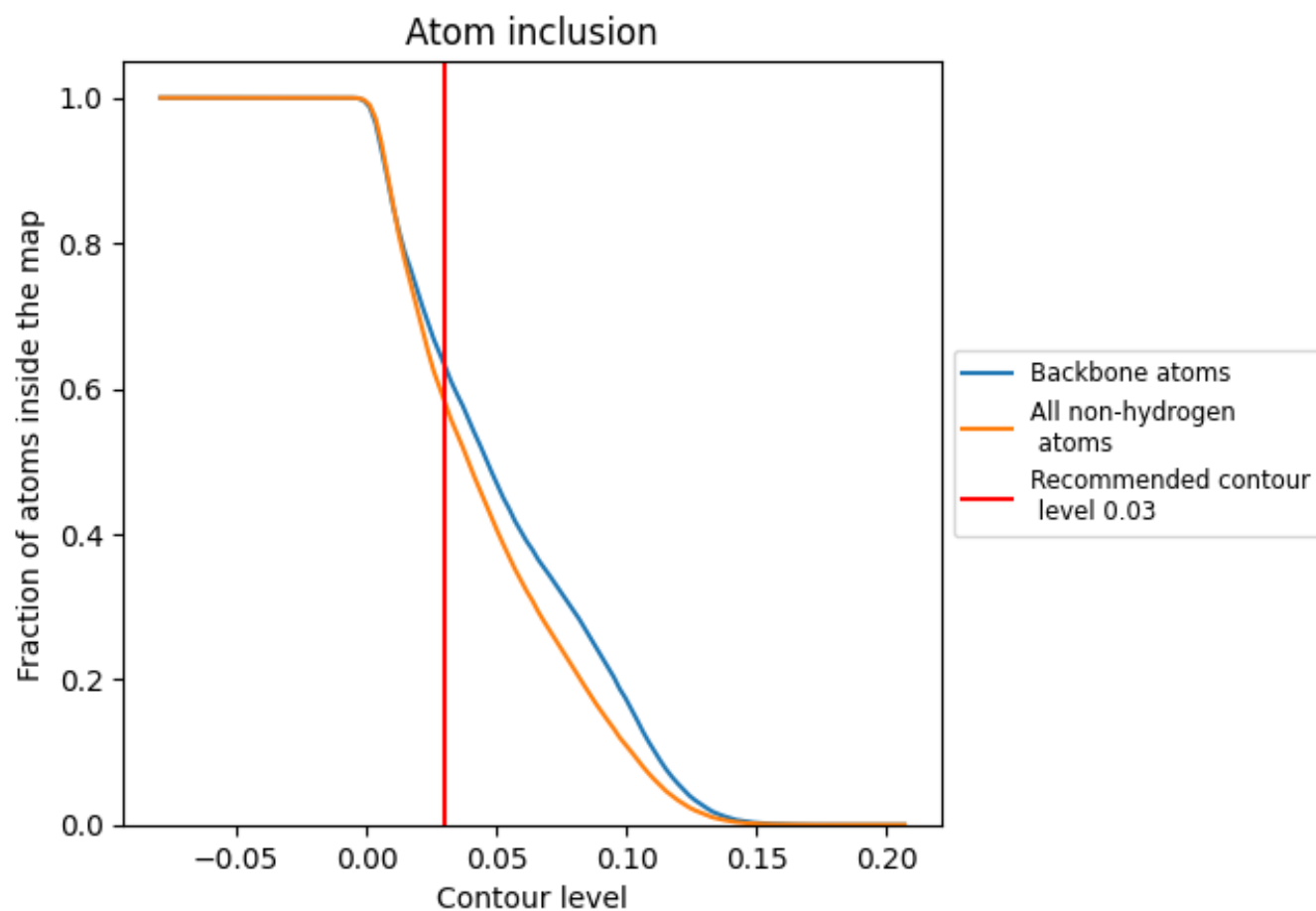
The images above show the model with each residue coloured according to its Q-score. This shows their resolvability in the map with higher Q-score values reflecting better resolvability. Please note: Q-score is calculating the resolvability of atoms, and thus high values are only expected at resolutions at which atoms can be resolved. Low Q-score values may therefore be expected for many entries.

9.3 Atom inclusion mapped to coordinate model [i](#)



The images above show the model with each residue coloured according to its atom inclusion. This shows to what extent they are inside the map at the recommended contour level (0.03).

9.4 Atom inclusion [i](#)



At the recommended contour level, 63% of all backbone atoms, 58% of all non-hydrogen atoms, are inside the map.

9.5 Map-model fit summary ⓘ

The table lists the average atom inclusion at the recommended contour level (0.03) and Q-score for the entire model and for each chain.

Chain	Atom inclusion	Q-score
All	<div></div> 0.5834	<div></div> 0.4660
A	<div></div> 0.6539	<div></div> 0.4950
B	<div></div> 0.6525	<div></div> 0.4910
C	<div></div> 0.6232	<div></div> 0.4880
D	<div></div> 0.5967	<div></div> 0.4810
E	<div></div> 0.5827	<div></div> 0.4740
F	<div></div> 0.6060	<div></div> 0.4790
G	<div></div> 0.6303	<div></div> 0.4830
H	<div></div> 0.3861	<div></div> 0.3660

