



Full wwPDB X-ray Structure Validation Report ⓘ

Jun 15, 2020 – 07:34 am BST

PDB ID : 4V06
Title : Crystal structure of human tryptophan hydroxylase 2 (TPH2), catalytic domain
Authors : Kopec, J.; Oberholzer, A.; Fitzpatrick, F.; Newman, J.; Tallant, C.; Kiyani, W.; Shrestha, L.; Burgess-Brown, N.; von Delft, F.; Arrowsmith, C.; Edwards, A.; Bountra, C.; Yue, W.W.
Deposited on : 2014-09-11
Resolution : 2.63 Å(reported)

This is a Full wwPDB X-ray Structure Validation Report for a publicly released PDB entry.

We welcome your comments at validation@mail.wwpdb.org

A user guide is available at

<https://www.wwpdb.org/validation/2017/XrayValidationReportHelp>

with specific help available everywhere you see the ⓘ symbol.

The following versions of software and data (see [references ⓘ](#)) were used in the production of this report:

MolProbity : 4.02b-467
Mogul : 1.8.5 (274361), CSD as541be (2020)
Xtriage (Phenix) : 1.13
EDS : 2.11
Percentile statistics : 20191225.v01 (using entries in the PDB archive December 25th 2019)
Refmac : 5.8.0158
CCP4 : 7.0.044 (Gargrove)
Ideal geometry (proteins) : Engh & Huber (2001)
Ideal geometry (DNA, RNA) : Parkinson et al. (1996)
Validation Pipeline (wwPDB-VP) : 2.11

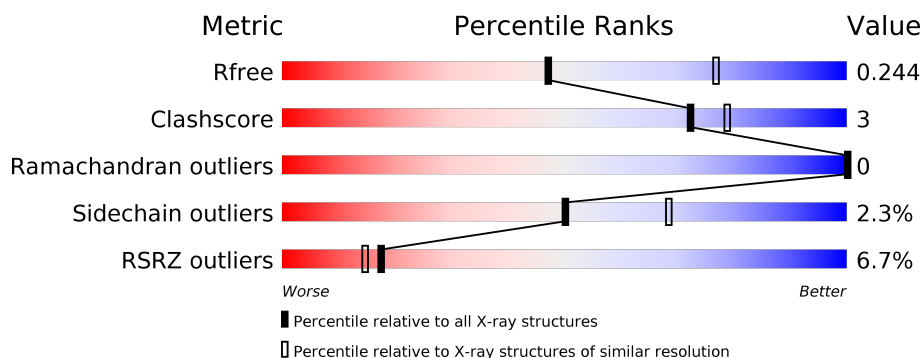
1 Overall quality at a glance

The following experimental techniques were used to determine the structure:

X-RAY DIFFRACTION

The reported resolution of this entry is 2.63 Å.

Percentile scores (ranging between 0-100) for global validation metrics of the entry are shown in the following graphic. The table shows the number of entries on which the scores are based.



Metric	Whole archive (#Entries)	Similar resolution (#Entries, resolution range(Å))
R_{free}	130704	1426 (2.66-2.62)
Clashscore	141614	1472 (2.66-2.62)
Ramachandran outliers	138981	1446 (2.66-2.62)
Sidechain outliers	138945	1446 (2.66-2.62)
RSRZ outliers	127900	1408 (2.66-2.62)

The table below summarises the geometric issues observed across the polymeric chains and their fit to the electron density. The red, orange, yellow and green segments on the lower bar indicate the fraction of residues that contain outliers for ≥ 3 , 2, 1 and 0 types of geometric quality criteria respectively. A grey segment represents the fraction of residues that are not modelled. The numeric value for each fraction is indicated below the corresponding segment, with a dot representing fractions $\leq 5\%$. The upper red bar (where present) indicates the fraction of residues that have poor fit to the electron density. The numeric value is given above the bar.

Mol	Chain	Length	Quality of chain
1	A	349	<div> <div>2%</div> <div> <div></div> <div>91%</div> <div>9%</div> </div> </div>
1	B	349	<div> <div>11%</div> <div> <div></div> <div>88%</div> <div>9%</div> <div>••</div> </div> </div>

2 Entry composition

There are 4 unique types of molecules in this entry. The entry contains 5335 atoms, of which 0 are hydrogens and 0 are deuteriums.

In the tables below, the ZeroOcc column contains the number of atoms modelled with zero occupancy, the AltConf column contains the number of residues with at least one atom in alternate conformation and the Trace column contains the number of residues modelled with at most 2 atoms.

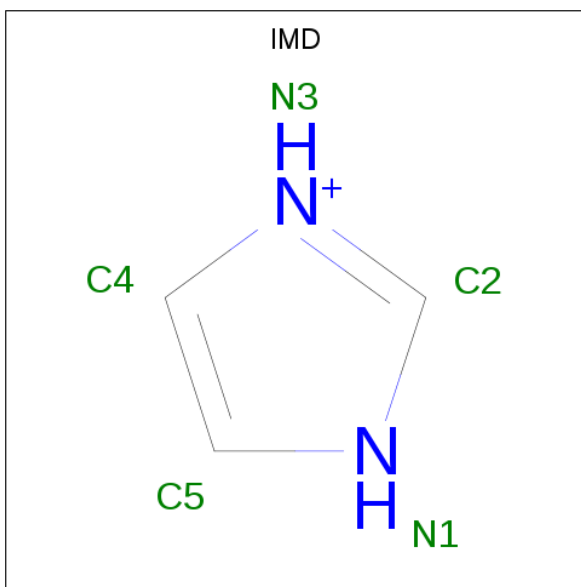
- Molecule 1 is a protein called TRYPTOPHAN 5-HYDROXYLASE 2.

Mol	Chain	Residues	Atoms					ZeroOcc	AltConf	Trace
1	A	349	Total	C	N	O	S	0	0	0
			2744	1761	453	514	16			
1	B	341	Total	C	N	O	S	0	0	0
			2468	1583	411	461	13			

There are 12 discrepancies between the modelled and reference sequences:

Chain	Residue	Modelled	Actual	Comment	Reference
A	142	LEU	-	expression tag	UNP Q8IWU9
A	143	TYR	-	expression tag	UNP Q8IWU9
A	144	PHE	-	expression tag	UNP Q8IWU9
A	145	GLN	-	expression tag	UNP Q8IWU9
A	146	SER	-	expression tag	UNP Q8IWU9
A	147	MET	-	expression tag	UNP Q8IWU9
B	142	LEU	-	expression tag	UNP Q8IWU9
B	143	TYR	-	expression tag	UNP Q8IWU9
B	144	PHE	-	expression tag	UNP Q8IWU9
B	145	GLN	-	expression tag	UNP Q8IWU9
B	146	SER	-	expression tag	UNP Q8IWU9
B	147	MET	-	expression tag	UNP Q8IWU9

- Molecule 2 is IMIDAZOLE (three-letter code: IMD) (formula: C₃H₅N₂).



Mol	Chain	Residues	Atoms			ZeroOcc	AltConf
2	A	1	Total	C	N	0	0
			5	3	2		
2	B	1	Total	C	N	0	0
			5	3	2		

- Molecule 3 is FE (III) ION (three-letter code: FE) (formula: Fe).

Mol	Chain	Residues	Atoms		ZeroOcc	AltConf
3	B	1	Total	Fe	0	0
			1	1		
3	A	1	Total	Fe	0	0
			1	1		

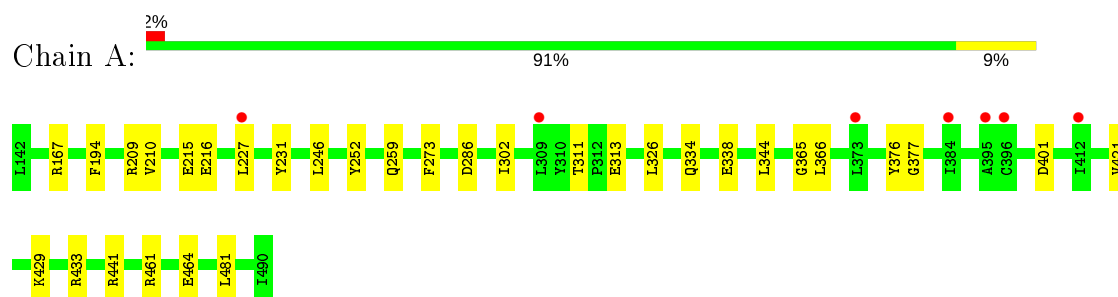
- Molecule 4 is water.

Mol	Chain	Residues	Atoms		ZeroOcc	AltConf
4	A	85	Total	O	0	0
			85	85		
4	B	26	Total	O	0	0
			26	26		

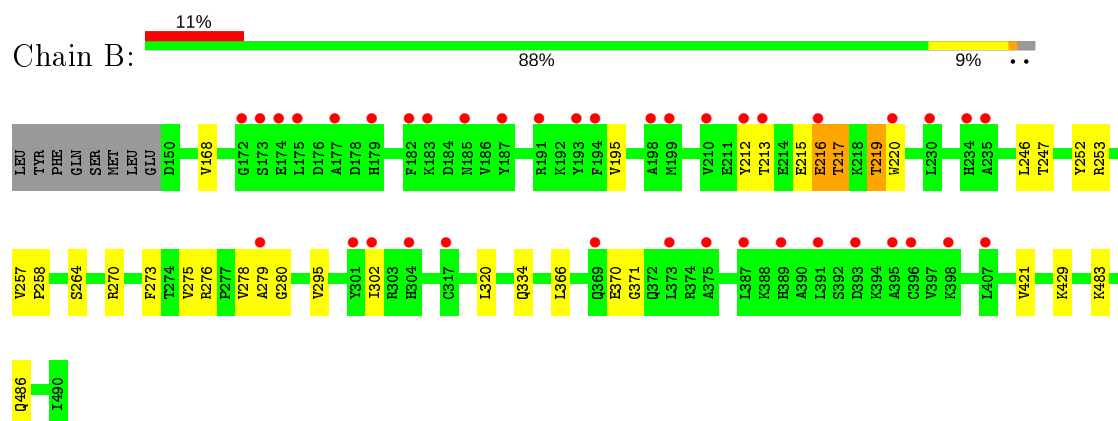
3 Residue-property plots [i](#)

These plots are drawn for all protein, RNA and DNA chains in the entry. The first graphic for a chain summarises the proportions of the various outlier classes displayed in the second graphic. The second graphic shows the sequence view annotated by issues in geometry and electron density. Residues are color-coded according to the number of geometric quality criteria for which they contain at least one outlier: green = 0, yellow = 1, orange = 2 and red = 3 or more. A red dot above a residue indicates a poor fit to the electron density ($RSRZ > 2$). Stretches of 2 or more consecutive residues without any outlier are shown as a green connector. Residues present in the sample, but not in the model, are shown in grey.

• Molecule 1: TRYPTOPHAN 5-HYDROXYLASE 2



• Molecule 1: TRYPTOPHAN 5-HYDROXYLASE 2



4 Data and refinement statistics

Property	Value	Source
Space group	P 21 21 2	Depositor
Cell constants a, b, c, α , β , γ	95.96Å 100.20Å 89.01Å 90.00° 90.00° 90.00°	Depositor
Resolution (Å)	44.50 – 2.63 44.50 – 2.63	Depositor EDS
% Data completeness (in resolution range)	99.8 (44.50-2.63) 99.8 (44.50-2.63)	Depositor EDS
R_{merge}	0.12	Depositor
R_{sym}	(Not available)	Depositor
$\langle I/\sigma(I) \rangle$ ¹	2.27 (at 2.61Å)	Xtriage
Refinement program	PHENIX (PHENIX.REFINE)	Depositor
R, R_{free}	0.198 , 0.242 0.200 , 0.244	Depositor DCC
R_{free} test set	1301 reflections (4.98%)	wwPDB-VP
Wilson B-factor (Å ²)	58.8	Xtriage
Anisotropy	0.048	Xtriage
Bulk solvent k_{sol} (e/Å ³), B_{sol} (Å ²)	0.29 , 67.7	EDS
L-test for twinning ²	$\langle L \rangle = 0.49$, $\langle L^2 \rangle = 0.32$	Xtriage
Estimated twinning fraction	0.024 for k,h,-l	Xtriage
F_o, F_c correlation	0.94	EDS
Total number of atoms	5335	wwPDB-VP
Average B, all atoms (Å ²)	79.0	wwPDB-VP

Xtriage's analysis on translational NCS is as follows: *The largest off-origin peak in the Patterson function is 4.37% of the height of the origin peak. No significant pseudotranslation is detected.*

¹Intensities estimated from amplitudes.

²Theoretical values of $\langle |L| \rangle$, $\langle L^2 \rangle$ for acentric reflections are 0.5, 0.333 respectively for untwinned datasets, and 0.375, 0.2 for perfectly twinned datasets.

5 Model quality

5.1 Standard geometry

Bond lengths and bond angles in the following residue types are not validated in this section: IMD, FE

The Z score for a bond length (or angle) is the number of standard deviations the observed value is removed from the expected value. A bond length (or angle) with $|Z| > 5$ is considered an outlier worth inspection. RMSZ is the root-mean-square of all Z scores of the bond lengths (or angles).

Mol	Chain	Bond lengths		Bond angles	
		RMSZ	$\# Z > 5$	RMSZ	$\# Z > 5$
1	A	0.22	0/2816	0.35	0/3828
1	B	0.21	0/2528	0.35	0/3454
All	All	0.22	0/5344	0.35	0/7282

There are no bond length outliers.

There are no bond angle outliers.

There are no chirality outliers.

There are no planarity outliers.

5.2 Too-close contacts

In the following table, the Non-H and H(model) columns list the number of non-hydrogen atoms and hydrogen atoms in the chain respectively. The H(added) column lists the number of hydrogen atoms added and optimized by MolProbity. The Clashes column lists the number of clashes within the asymmetric unit, whereas Symm-Clashes lists symmetry related clashes.

Mol	Chain	Non-H	H(model)	H(added)	Clashes	Symm-Clashes
1	A	2744	0	2577	15	0
1	B	2468	0	2181	19	0
2	A	5	0	4	0	0
2	B	5	0	4	0	0
3	A	1	0	0	0	0
3	B	1	0	0	0	0
4	A	85	0	0	2	0
4	B	26	0	0	1	0
All	All	5335	0	4766	34	0

The all-atom clashscore is defined as the number of clashes found per 1000 atoms (including hydrogen atoms). The all-atom clashscore for this structure is 3.

All (34) close contacts within the same asymmetric unit are listed below, sorted by their clash magnitude.

Atom-1	Atom-2	Interatomic distance (Å)	Clash overlap (Å)
1:B:258:PRO:HG2	1:B:320:LEU:HD13	1.72	0.72
1:B:216:GLU:HB3	1:B:302:ILE:HD12	1.76	0.68
1:A:326:LEU:HD21	1:A:376:TYR:HB2	1.76	0.66
1:B:168:VAL:HG21	1:B:279:ALA:HB3	1.79	0.64
1:A:216:GLU:HB3	1:A:302:ILE:HG13	1.80	0.63
1:B:276:ARG:HH11	1:B:295:VAL:HG11	1.65	0.61
1:B:215:GLU:O	1:B:219:THR:OG1	2.19	0.59
1:B:366:LEU:HB2	1:B:421:VAL:HG22	1.87	0.56
1:A:167:ARG:NH2	1:A:286:ASP:OD1	2.41	0.53
1:B:370:GLU:N	1:B:371:GLY:HA3	2.24	0.53
1:A:209:ARG:HH11	1:A:259:GLN:HG3	1.74	0.53
1:B:334:GLN:HG2	1:B:429:LYS:HD2	1.91	0.53
1:A:338:GLU:OE2	1:A:433:ARG:NH1	2.42	0.51
4:A:2071:HOH:O	1:B:486:GLN:NE2	2.43	0.51
1:A:366:LEU:HB2	1:A:421:VAL:HG22	1.93	0.51
1:B:217:THR:HG23	1:B:257:VAL:HG23	1.93	0.50
1:B:278:VAL:HG22	1:B:280:GLY:H	1.76	0.50
1:B:264:SER:HB2	1:B:275:VAL:HG22	1.94	0.49
1:A:194:PHE:HE1	1:A:210:VAL:HG11	1.78	0.48
1:A:227:LEU:HB3	1:A:231:TYR:CZ	2.49	0.48
1:A:338:GLU:OE2	1:A:429:LYS:NZ	2.47	0.47
1:B:276:ARG:NH2	4:B:2003:HOH:O	2.49	0.46
4:A:2070:HOH:O	1:B:483:LYS:NZ	2.44	0.46
1:A:311:THR:OG1	1:A:313:GLU:O	2.33	0.46
1:B:220:TRP:NE1	1:B:253:ARG:O	2.42	0.45
1:A:344:LEU:O	1:A:441:ARG:NH1	2.45	0.44
1:A:334:GLN:O	1:A:338:GLU:HG2	2.17	0.44
1:B:195:VAL:HG13	1:B:279:ALA:HB1	1.99	0.44
1:A:246:LEU:HB3	1:A:252:TYR:CD1	2.54	0.43
1:B:247:THR:HA	1:B:252:TYR:H	1.83	0.42
1:B:246:LEU:HB3	1:B:252:TYR:CD1	2.55	0.42
1:A:401:ASP:OD1	1:A:401:ASP:N	2.53	0.41
1:A:365:GLY:H	1:A:377:GLY:HA3	1.87	0.40
1:B:276:ARG:HD2	1:B:295:VAL:HG11	2.03	0.40

There are no symmetry-related clashes.

5.3 Torsion angles

5.3.1 Protein backbone

In the following table, the Percentiles column shows the percent Ramachandran outliers of the chain as a percentile score with respect to all X-ray entries followed by that with respect to entries of similar resolution.

The Analysed column shows the number of residues for which the backbone conformation was analysed, and the total number of residues.

Mol	Chain	Analysed	Favoured	Allowed	Outliers	Percentiles	
1	A	347/349 (99%)	340 (98%)	7 (2%)	0	100	100
1	B	339/349 (97%)	327 (96%)	12 (4%)	0	100	100
All	All	686/698 (98%)	667 (97%)	19 (3%)	0	100	100

There are no Ramachandran outliers to report.

5.3.2 Protein sidechains

In the following table, the Percentiles column shows the percent sidechain outliers of the chain as a percentile score with respect to all X-ray entries followed by that with respect to entries of similar resolution.

The Analysed column shows the number of residues for which the sidechain conformation was analysed, and the total number of residues.

Mol	Chain	Analysed	Rotameric	Outliers	Percentiles	
1	A	286/310 (92%)	281 (98%)	5 (2%)	60	76
1	B	226/310 (73%)	219 (97%)	7 (3%)	40	58
All	All	512/620 (83%)	500 (98%)	12 (2%)	50	68

All (12) residues with a non-rotameric sidechain are listed below:

Mol	Chain	Res	Type
1	A	215	GLU
1	A	273	PHE
1	A	461	ARG
1	A	464	GLU
1	A	481	LEU
1	B	212	TYR
1	B	213	THR
1	B	216	GLU

Continued on next page...

Continued from previous page...

Mol	Chain	Res	Type
1	B	217	THR
1	B	219	THR
1	B	270	ARG
1	B	273	PHE

Some sidechains can be flipped to improve hydrogen bonding and reduce clashes. There are no such sidechains identified.

5.3.3 RNA ⓘ

There are no RNA molecules in this entry.

5.4 Non-standard residues in protein, DNA, RNA chains ⓘ

There are no non-standard protein/DNA/RNA residues in this entry.

5.5 Carbohydrates ⓘ

There are no carbohydrates in this entry.

5.6 Ligand geometry ⓘ

Of 4 ligands modelled in this entry, 2 are monoatomic - leaving 2 for Mogul analysis.

In the following table, the Counts columns list the number of bonds (or angles) for which Mogul statistics could be retrieved, the number of bonds (or angles) that are observed in the model and the number of bonds (or angles) that are defined in the Chemical Component Dictionary. The Link column lists molecule types, if any, to which the group is linked. The Z score for a bond length (or angle) is the number of standard deviations the observed value is removed from the expected value. A bond length (or angle) with $|Z| > 2$ is considered an outlier worth inspection. RMSZ is the root-mean-square of all Z scores of the bond lengths (or angles).

Mol	Type	Chain	Res	Link	Bond lengths			Bond angles		
					Counts	RMSZ	$\# Z > 2$	Counts	RMSZ	$\# Z > 2$
2	IMD	B	600	3	3,5,5	0.41	0	4,5,5	0.66	0
2	IMD	A	600	3	3,5,5	0.38	0	4,5,5	0.98	0

In the following table, the Chirals column lists the number of chiral outliers, the number of chiral centers analysed, the number of these observed in the model and the number defined in the Chemical Component Dictionary. Similar counts are reported in the Torsion and Rings columns.

'-' means no outliers of that kind were identified.

Mol	Type	Chain	Res	Link	Chirals	Torsions	Rings
2	IMD	B	600	3	-	-	0/1/1/1
2	IMD	A	600	3	-	-	0/1/1/1

There are no bond length outliers.

There are no bond angle outliers.

There are no chirality outliers.

There are no torsion outliers.

There are no ring outliers.

No monomer is involved in short contacts.

5.7 Other polymers [i](#)

There are no such residues in this entry.

5.8 Polymer linkage issues [i](#)

There are no chain breaks in this entry.

6 Fit of model and data ⓘ

6.1 Protein, DNA and RNA chains ⓘ

In the following table, the column labelled ‘#RSRZ> 2’ contains the number (and percentage) of RSRZ outliers, followed by percent RSRZ outliers for the chain as percentile scores relative to all X-ray entries and entries of similar resolution. The OWAB column contains the minimum, median, 95th percentile and maximum values of the occupancy-weighted average B-factor per residue. The column labelled ‘Q< 0.9’ lists the number of (and percentage) of residues with an average occupancy less than 0.9.

Mol	Chain	Analysed	<RSRZ>	#RSRZ>2	OWAB(Å ²)	Q<0.9
1	A	349/349 (100%)	0.05	7 (2%) 65 61	33, 63, 108, 169	0
1	B	341/349 (97%)	0.58	39 (11%) 5 3	34, 96, 162, 200	0
All	All	690/698 (98%)	0.31	46 (6%) 17 15	33, 76, 148, 200	0

All (46) RSRZ outliers are listed below:

Mol	Chain	Res	Type	RSRZ
1	B	172	GLY	7.4
1	B	194	PHE	6.4
1	B	302	ILE	5.5
1	B	173	SER	5.3
1	B	235	ALA	4.4
1	B	395	ALA	4.2
1	B	212	TYR	4.2
1	B	177	ALA	3.5
1	B	193	TYR	3.5
1	B	175	LEU	3.4
1	B	174	GLU	3.4
1	B	187	TYR	3.1
1	B	185	ASN	3.0
1	B	407	LEU	3.0
1	B	210	VAL	2.8
1	B	183	LYS	2.7
1	B	387	LEU	2.6
1	B	216	GLU	2.6
1	B	213	THR	2.6
1	B	393	ASP	2.6
1	B	301	TYR	2.6
1	A	384	ILE	2.6
1	B	304	HIS	2.5
1	A	227	LEU	2.5

Continued on next page...

Continued from previous page...

Mol	Chain	Res	Type	RSRZ
1	B	317	CYS	2.5
1	B	398	LYS	2.5
1	A	373	LEU	2.5
1	A	395	ALA	2.5
1	B	279	ALA	2.5
1	B	182	PHE	2.5
1	B	375	ALA	2.4
1	B	179	HIS	2.4
1	B	389	HIS	2.3
1	B	191	ARG	2.3
1	A	309	LEU	2.3
1	B	234	HIS	2.2
1	B	199	MET	2.2
1	B	396	CYS	2.2
1	A	412	ILE	2.1
1	B	369	GLN	2.1
1	B	391	LEU	2.1
1	B	230	LEU	2.1
1	B	373	LEU	2.1
1	B	220	TRP	2.1
1	A	396	CYS	2.0
1	B	198	ALA	2.0

6.2 Non-standard residues in protein, DNA, RNA chains [i](#)

There are no non-standard protein/DNA/RNA residues in this entry.

6.3 Carbohydrates [i](#)

There are no carbohydrates in this entry.

6.4 Ligands [i](#)

In the following table, the Atoms column lists the number of modelled atoms in the group and the number defined in the chemical component dictionary. The B-factors column lists the minimum, median, 95th percentile and maximum values of B factors of atoms in the group. The column labelled 'Q< 0.9' lists the number of atoms with occupancy less than 0.9.

Mol	Type	Chain	Res	Atoms	RSCC	RSR	B-factors(\AA^2)	Q<0.9
3	FE	B	1491	1/1	0.91	0.16	89,89,89,89	0

Continued on next page...

Continued from previous page...

Mol	Type	Chain	Res	Atoms	RSCC	RSR	B-factors(\AA^2)	Q<0.9
2	IMD	B	600	5/5	0.96	0.20	79,87,92,94	0
2	IMD	A	600	5/5	0.97	0.25	80,84,94,97	0
3	FE	A	1491	1/1	0.97	0.21	62,62,62,62	0

6.5 Other polymers [i](#)

There are no such residues in this entry.