



Full wwPDB X-ray Structure Validation Report ⓘ

Mar 30, 2022 – 12:04 AM JST

PDB ID : 7V2B
Title : Crystal Structure of VpsR display novel dimeric architecture and c-di-GMP binding: mechanistic implications in oligomerization, ATPase activity and DNA binding.
Authors : Chakraborty, T.; Sen, U.
Deposited on : 2021-08-08
Resolution : 3.20 Å(reported)

This is a Full wwPDB X-ray Structure Validation Report for a publicly released PDB entry.

We welcome your comments at validation@mail.wwpdb.org

A user guide is available at

<https://www.wwpdb.org/validation/2017/XrayValidationReportHelp>

with specific help available everywhere you see the ⓘ symbol.

The following versions of software and data (see [references ⓘ](#)) were used in the production of this report:

MolProbity : 4.02b-467
Mogul : 1.8.5 (274361), CSD as541be (2020)
Xtriage (Phenix) : 1.13
EDS : 2.27
buster-report : 1.1.7 (2018)
Percentile statistics : 20191225.v01 (using entries in the PDB archive December 25th 2019)
Refmac : 5.8.0158
CCP4 : 7.0.044 (Gargrove)
Ideal geometry (proteins) : Engh & Huber (2001)
Ideal geometry (DNA, RNA) : Parkinson et al. (1996)
Validation Pipeline (wwPDB-VP) : 2.27

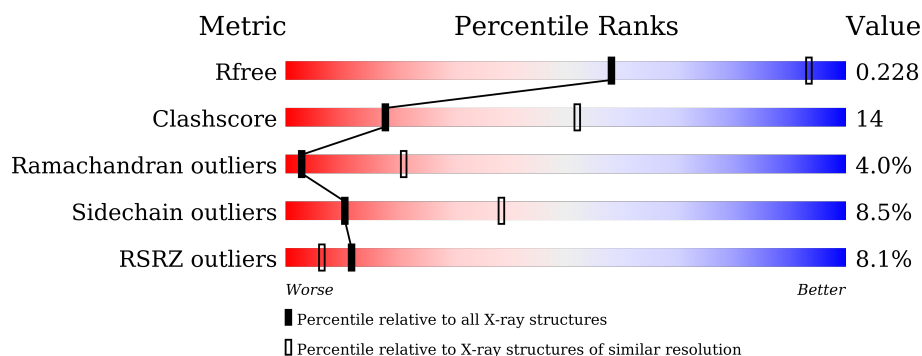
1 Overall quality at a glance

The following experimental techniques were used to determine the structure:

X-RAY DIFFRACTION

The reported resolution of this entry is 3.20 Å.

Percentile scores (ranging between 0-100) for global validation metrics of the entry are shown in the following graphic. The table shows the number of entries on which the scores are based.



Metric	Whole archive (#Entries)	Similar resolution (#Entries, resolution range(Å))
R_{free}	130704	1133 (3.20-3.20)
Clashscore	141614	1253 (3.20-3.20)
Ramachandran outliers	138981	1234 (3.20-3.20)
Sidechain outliers	138945	1233 (3.20-3.20)
RSRZ outliers	127900	1095 (3.20-3.20)

The table below summarises the geometric issues observed across the polymeric chains and their fit to the electron density. The red, orange, yellow and green segments of the lower bar indicate the fraction of residues that contain outliers for ≥ 3 , 2, 1 and 0 types of geometric quality criteria respectively. A grey segment represents the fraction of residues that are not modelled. The numeric value for each fraction is indicated below the corresponding segment, with a dot representing fractions $\leq 5\%$. The upper red bar (where present) indicates the fraction of residues that have poor fit to the electron density. The numeric value is given above the bar.

Mol	Chain	Length	Quality of chain
1	A	399	<div> <div>7%</div> <div>56%</div> <div>34%</div> <div>•</div> <div>6%</div> </div>
1	D	399	<div> <div>8%</div> <div>61%</div> <div>28%</div> <div>5%</div> <div>6%</div> </div>

2 Entry composition

There are 2 unique types of molecules in this entry. The entry contains 5951 atoms, of which 0 are hydrogens and 0 are deuteriums.

In the tables below, the ZeroOcc column contains the number of atoms modelled with zero occupancy, the AltConf column contains the number of residues with at least one atom in alternate conformation and the Trace column contains the number of residues modelled with at most 2 atoms.

- Molecule 1 is a protein called VpsR.

Mol	Chain	Residues	Atoms					ZeroOcc	AltConf	Trace
1	A	375	Total	C	N	O	S	0	0	0
			2941	1866	511	552	12			
1	D	376	Total	C	N	O	S	0	0	0
			2946	1869	512	553	12			

There are 34 discrepancies between the modelled and reference sequences:

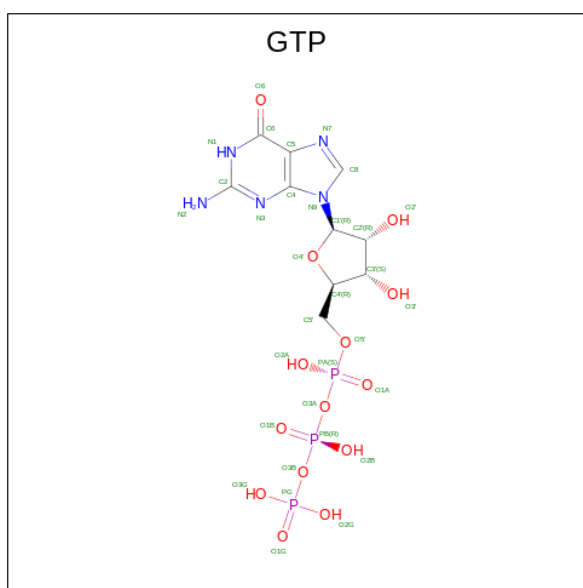
Chain	Residue	Modelled	Actual	Comment	Reference
A	-16	HIS	-	expression tag	UNP Q9AAQ41
A	-15	HIS	-	expression tag	UNP Q9AAQ41
A	-14	HIS	-	expression tag	UNP Q9AAQ41
A	-13	HIS	-	expression tag	UNP Q9AAQ41
A	-12	HIS	-	expression tag	UNP Q9AAQ41
A	-11	HIS	-	expression tag	UNP Q9AAQ41
A	-10	SER	-	expression tag	UNP Q9AAQ41
A	-9	SER	-	expression tag	UNP Q9AAQ41
A	-8	GLY	-	expression tag	UNP Q9AAQ41
A	-7	LEU	-	expression tag	UNP Q9AAQ41
A	-6	VAL	-	expression tag	UNP Q9AAQ41
A	-5	PRO	-	expression tag	UNP Q9AAQ41
A	-4	ARG	-	expression tag	UNP Q9AAQ41
A	-3	GLY	-	expression tag	UNP Q9AAQ41
A	-2	SER	-	expression tag	UNP Q9AAQ41
A	-1	HIS	-	expression tag	UNP Q9AAQ41
A	0	MET	-	expression tag	UNP Q9AAQ41
D	-16	HIS	-	expression tag	UNP Q9AAQ41
D	-15	HIS	-	expression tag	UNP Q9AAQ41
D	-14	HIS	-	expression tag	UNP Q9AAQ41
D	-13	HIS	-	expression tag	UNP Q9AAQ41
D	-12	HIS	-	expression tag	UNP Q9AAQ41
D	-11	HIS	-	expression tag	UNP Q9AAQ41
D	-10	SER	-	expression tag	UNP Q9AAQ41
D	-9	SER	-	expression tag	UNP Q9AAQ41

Continued on next page...

Continued from previous page...

Chain	Residue	Modelled	Actual	Comment	Reference
D	-8	GLY	-	expression tag	UNP Q9AQ41
D	-7	LEU	-	expression tag	UNP Q9AQ41
D	-6	VAL	-	expression tag	UNP Q9AQ41
D	-5	PRO	-	expression tag	UNP Q9AQ41
D	-4	ARG	-	expression tag	UNP Q9AQ41
D	-3	GLY	-	expression tag	UNP Q9AQ41
D	-2	SER	-	expression tag	UNP Q9AQ41
D	-1	HIS	-	expression tag	UNP Q9AQ41
D	0	MET	-	expression tag	UNP Q9AQ41

- Molecule 2 is GUANOSINE-5'-TRIPHOSPHATE (three-letter code: GTP) (formula: $C_{10}H_{16}N_5O_{14}P_3$) (labeled as "Ligand of Interest" by depositor).

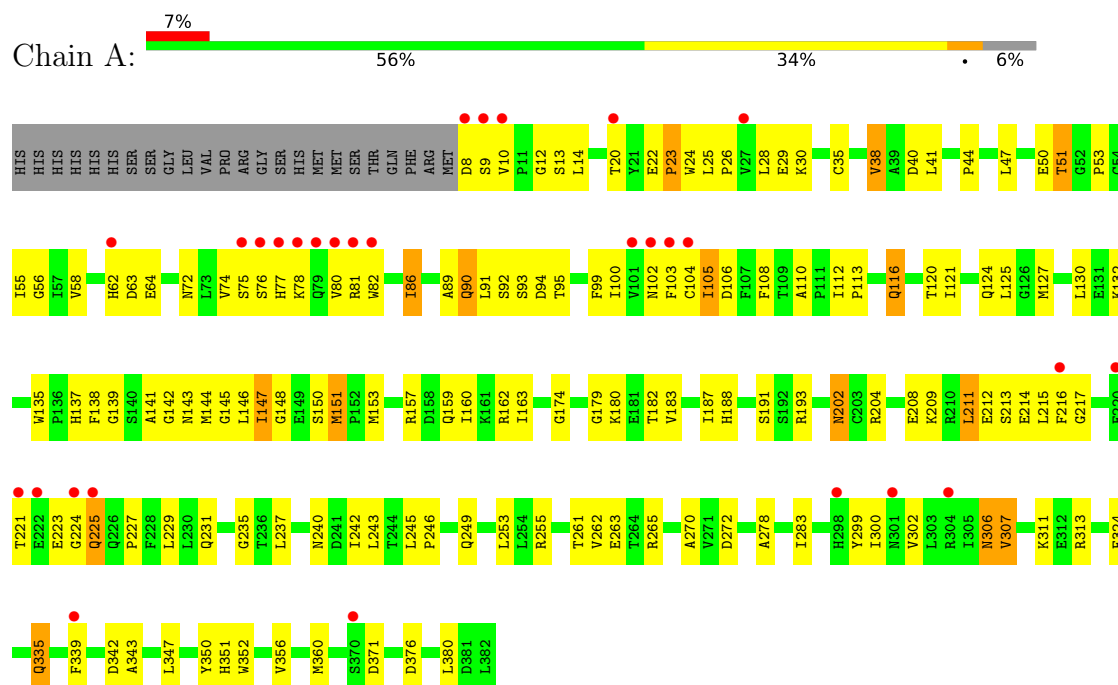


Mol	Chain	Residues	Atoms					ZeroOcc	AltConf
2	A	1	Total	C	N	O	P	0	0
			32	10	5	14	3		
2	D	1	Total	C	N	O	P	0	0
			32	10	5	14	3		

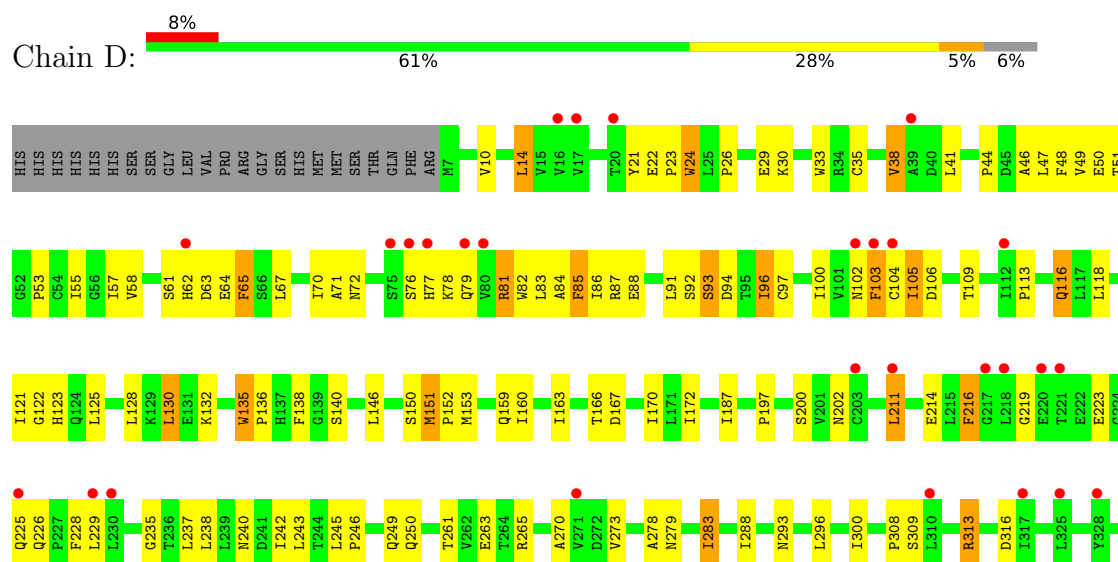
3 Residue-property plots [i](#)

These plots are drawn for all protein, RNA, DNA and oligosaccharide chains in the entry. The first graphic for a chain summarises the proportions of the various outlier classes displayed in the second graphic. The second graphic shows the sequence view annotated by issues in geometry and electron density. Residues are color-coded according to the number of geometric quality criteria for which they contain at least one outlier: green = 0, yellow = 1, orange = 2 and red = 3 or more. A red dot above a residue indicates a poor fit to the electron density ($RSRZ > 2$). Stretches of 2 or more consecutive residues without any outlier are shown as a green connector. Residues present in the sample, but not in the model, are shown in grey.

• Molecule 1: VpsR



• Molecule 1: VpsR





4 Data and refinement statistics

Property	Value	Source
Space group	P 31	Depositor
Cell constants a, b, c, α , β , γ	118.64Å 118.64Å 78.25Å 90.00° 90.00° 120.00°	Depositor
Resolution (Å)	47.27 – 3.20 47.27 – 3.15	Depositor EDS
% Data completeness (in resolution range)	90.3 (47.27-3.20) 98.5 (47.27-3.15)	Depositor EDS
R_{merge}	0.09	Depositor
R_{sym}	(Not available)	Depositor
$\langle I/\sigma(I) \rangle$ ¹	1.44 (at 3.12Å)	Xtriage
Refinement program	PHENIX 1.9_1692	Depositor
R, R_{free}	0.214 , 0.264 0.225 , 0.228	Depositor DCC
R_{free} test set	2005 reflections (9.55%)	wwPDB-VP
Wilson B-factor (Å ²)	132.7	Xtriage
Anisotropy	0.295	Xtriage
Bulk solvent k_{sol} (e/Å ³), B_{sol} (Å ²)	0.33 , 150.4	EDS
L-test for twinning ²	$\langle L \rangle = 0.49$, $\langle L^2 \rangle = 0.32$	Xtriage
Estimated twinning fraction	0.018 for -h,-k,l 0.032 for h,-h-k,-l 0.019 for -k,-h,-l	Xtriage
F_o, F_c correlation	0.95	EDS
Total number of atoms	5951	wwPDB-VP
Average B, all atoms (Å ²)	163.0	wwPDB-VP

Xtriage's analysis on translational NCS is as follows: *The largest off-origin peak in the Patterson function is 3.32% of the height of the origin peak. No significant pseudotranslation is detected.*

¹Intensities estimated from amplitudes.

²Theoretical values of $\langle |L| \rangle$, $\langle L^2 \rangle$ for acentric reflections are 0.5, 0.333 respectively for untwinned datasets, and 0.375, 0.2 for perfectly twinned datasets.

5 Model quality

5.1 Standard geometry

Bond lengths and bond angles in the following residue types are not validated in this section: GTP

The Z score for a bond length (or angle) is the number of standard deviations the observed value is removed from the expected value. A bond length (or angle) with $|Z| > 5$ is considered an outlier worth inspection. RMSZ is the root-mean-square of all Z scores of the bond lengths (or angles).

Mol	Chain	Bond lengths		Bond angles	
		RMSZ	$\# Z > 5$	RMSZ	$\# Z > 5$
1	A	0.27	0/2995	0.52	0/4054
1	D	0.26	0/3000	0.51	1/4061 (0.0%)
All	All	0.26	0/5995	0.52	1/8115 (0.0%)

There are no bond length outliers.

All (1) bond angle outliers are listed below:

Mol	Chain	Res	Type	Atoms	Z	Observed(°)	Ideal(°)
1	D	130	LEU	CA-CB-CG	6.07	129.26	115.30

There are no chirality outliers.

There are no planarity outliers.

5.2 Too-close contacts

In the following table, the Non-H and H(model) columns list the number of non-hydrogen atoms and hydrogen atoms in the chain respectively. The H(added) column lists the number of hydrogen atoms added and optimized by MolProbity. The Clashes column lists the number of clashes within the asymmetric unit, whereas Symm-Clashes lists symmetry-related clashes.

Mol	Chain	Non-H	H(model)	H(added)	Clashes	Symm-Clashes
1	A	2941	0	2969	99	0
1	D	2946	0	2971	70	0
2	A	32	0	11	1	0
2	D	32	0	12	0	0
All	All	5951	0	5963	162	0

The all-atom clashscore is defined as the number of clashes found per 1000 atoms (including hydrogen atoms). The all-atom clashscore for this structure is 14.

All (162) close contacts within the same asymmetric unit are listed below, sorted by their clash magnitude.

Atom-1	Atom-2	Interatomic distance (Å)	Clash overlap (Å)
1:A:56:GLY:HA3	1:A:82:TRP:HE1	1.32	0.93
1:A:132:LYS:HA	1:A:135:TRP:HB3	1.65	0.79
1:D:160:ILE:HG23	1:D:187:ILE:HG22	1.66	0.78
1:A:221:THR:HB	1:A:223:GLU:HB2	1.69	0.75
1:D:240:ASN:HA	1:D:278:ALA:HB3	1.70	0.71
1:A:216:PHE:HB3	1:A:263:GLU:HB3	1.71	0.71
1:A:90:GLN:H	1:A:110:ALA:HB2	1.56	0.70
1:A:306:ASN:N	1:A:306:ASN:OD1	2.24	0.70
1:A:26:PRO:HA	1:A:29:GLU:HB3	1.73	0.70
1:A:160:ILE:HG23	1:A:187:ILE:HG22	1.74	0.69
1:D:61:SER:HA	1:D:88:GLU:HA	1.74	0.69
1:A:22:GLU:HG2	1:A:26:PRO:HD3	1.73	0.68
1:D:22:GLU:O	1:D:24:TRP:N	2.27	0.68
1:A:174:GLY:HA3	1:A:307:VAL:HG23	1.74	0.68
1:A:22:GLU:O	1:A:24:TRP:N	2.27	0.67
1:D:14:LEU:HB2	1:D:57:ILE:HB	1.77	0.67
1:D:122:GLY:HA2	1:D:125:LEU:HD13	1.76	0.67
1:A:240:ASN:HA	1:A:278:ALA:HB3	1.76	0.67
1:A:179:GLY:N	2:A:501:GTP:O2B	2.29	0.66
1:A:148:GLY:O	1:A:157:ARG:NH1	2.28	0.65
1:A:86:ILE:HG21	1:A:99:PHE:HE2	1.62	0.64
1:A:113:PRO:HB2	1:A:116:GLN:HB3	1.78	0.64
1:D:250:GLN:HE22	1:D:293:ASN:H	1.45	0.64
1:A:8:ASP:HA	1:A:132:LYS:HZ2	1.64	0.63
1:A:102:ASN:O	1:A:104:CYS:N	2.32	0.63
1:A:90:GLN:HB3	1:A:91:LEU:HD12	1.81	0.62
1:D:376:ASP:OD1	1:D:379:GLN:NE2	2.26	0.62
1:A:223:GLU:HG3	1:A:225:GLN:HB2	1.82	0.61
1:A:104:CYS:O	1:A:106:ASP:N	2.34	0.61
1:D:38:VAL:HG21	1:D:44:PRO:HB3	1.82	0.61
1:A:335:GLN:HE21	1:A:371:ASP:HA	1.67	0.60
1:A:130:LEU:HD11	1:D:97:CYS:HB3	1.83	0.59
1:D:113:PRO:HB2	1:D:116:GLN:HB3	1.85	0.59
1:D:81:ARG:NH2	1:D:81:ARG:O	2.36	0.58
1:A:108:PHE:HZ	1:A:121:ILE:HD11	1.68	0.58
1:A:351:HIS:HB3	1:D:288:ILE:HD11	1.85	0.58
1:D:279:ASN:HD21	1:D:283:ILE:HG12	1.69	0.58
1:A:202:ASN:OD1	1:A:202:ASN:N	2.34	0.57
1:A:229:LEU:HD23	1:A:237:LEU:HD13	1.87	0.57
1:D:211:LEU:HB3	1:D:249:GLN:HG3	1.87	0.57

Continued on next page...

Continued from previous page...

Atom-1	Atom-2	Interatomic distance (Å)	Clash overlap (Å)
1:D:82:TRP:HE1	1:D:84:ALA:HB2	1.70	0.57
1:A:105:ILE:HD12	1:D:105:ILE:HD11	1.87	0.57
1:D:376:ASP:OD2	1:D:378:SER:OG	2.18	0.56
1:D:87:ARG:NH1	1:D:109:THR:O	2.39	0.56
1:A:72:ASN:O	1:A:76:SER:N	2.39	0.55
1:A:74:VAL:HG13	1:A:82:TRP:HZ3	1.69	0.55
1:A:22:GLU:O	1:A:25:LEU:N	2.23	0.54
1:A:53:PRO:HA	1:A:81:ARG:O	2.08	0.53
1:A:216:PHE:HD1	1:A:227:PRO:HG3	1.73	0.53
1:D:151:MET:HB3	1:D:152:PRO:HD3	1.91	0.53
1:A:142:GLY:HA3	1:A:157:ARG:HD3	1.90	0.53
1:D:48:PHE:HB3	1:D:78:LYS:HD2	1.90	0.53
1:D:214:GLU:HG2	1:D:228:PHE:HB2	1.89	0.53
1:A:208:GLU:HB3	1:A:246:PRO:HG2	1.90	0.52
1:A:38:VAL:HG21	1:A:44:PRO:HB3	1.91	0.52
1:A:223:GLU:HG3	1:A:224:GLY:H	1.73	0.52
1:D:242:ILE:HG23	1:D:243:LEU:HD12	1.90	0.52
1:D:337:ARG:HG3	1:D:373:VAL:HG23	1.91	0.51
1:D:26:PRO:HA	1:D:29:GLU:HB2	1.93	0.51
1:A:81:ARG:HB3	1:A:162:ARG:NH2	2.25	0.51
1:A:86:ILE:HG21	1:A:99:PHE:CE2	2.43	0.51
1:A:93:SER:O	1:A:95:THR:N	2.44	0.50
1:D:88:GLU:HB2	1:D:91:LEU:HD13	1.92	0.50
1:D:150:SER:OG	1:D:316:ASP:OD1	2.20	0.50
1:A:215:LEU:N	1:A:216:PHE:HA	2.28	0.49
1:D:55:ILE:HG12	1:D:128:LEU:HD12	1.93	0.49
1:A:145:GLY:O	1:A:147:ILE:N	2.46	0.49
1:A:24:TRP:O	1:A:28:LEU:HG	2.13	0.49
1:A:74:VAL:HG22	1:A:82:TRP:CH2	2.48	0.49
1:D:58:VAL:HB	1:D:86:ILE:HG22	1.95	0.49
1:A:150:SER:OG	1:A:151:MET:N	2.44	0.49
1:A:242:ILE:HD12	1:A:245:LEU:HD13	1.95	0.49
1:D:333:ASN:O	1:D:333:ASN:ND2	2.36	0.48
1:A:180:LYS:HD2	1:A:278:ALA:HB1	1.95	0.48
1:A:58:VAL:HB	1:A:86:ILE:HG22	1.95	0.48
1:D:29:GLU:HG3	1:D:35:CYS:SG	2.53	0.48
1:A:100:ILE:HG23	1:A:104:CYS:HB2	1.96	0.48
1:A:135:TRP:O	1:A:137:HIS:N	2.46	0.48
1:A:223:GLU:CG	1:A:225:GLN:HB2	2.43	0.48
1:D:21:TYR:HB3	1:D:24:TRP:CH2	2.49	0.48
1:D:100:ILE:HG23	1:D:104:CYS:HB2	1.96	0.47

Continued on next page...

Continued from previous page...

Atom-1	Atom-2	Interatomic distance (Å)	Clash overlap (Å)
1:A:75:SER:O	1:A:77:HIS:N	2.46	0.47
1:A:261:THR:HG22	1:A:270:ALA:HB2	1.96	0.47
1:A:13:SER:O	1:A:56:GLY:HA2	2.13	0.47
1:A:56:GLY:CA	1:A:82:TRP:HE1	2.17	0.47
1:A:159:GLN:O	1:A:163:ILE:HG12	2.14	0.47
1:A:261:THR:HA	1:A:270:ALA:HA	1.97	0.47
1:A:127:MET:HE1	1:D:100:ILE:HG22	1.96	0.47
1:A:74:VAL:HG22	1:A:82:TRP:HH2	1.80	0.47
1:D:229:LEU:HD23	1:D:237:LEU:HD13	1.96	0.47
1:A:44:PRO:HA	1:A:47:LEU:HB3	1.97	0.46
1:A:224:GLY:HA2	1:A:265:ARG:HD2	1.97	0.46
1:D:33:TRP:CZ2	1:D:125:LEU:HD11	2.50	0.46
1:D:72:ASN:O	1:D:76:SER:N	2.48	0.46
1:A:339:PHE:HB3	1:A:343:ALA:HB3	1.97	0.46
1:D:46:ALA:O	1:D:49:VAL:HG12	2.16	0.46
1:D:53:PRO:HG2	1:D:132:LYS:HD3	1.98	0.46
1:A:74:VAL:HG21	1:A:99:PHE:CZ	2.50	0.46
1:A:216:PHE:CD1	1:A:227:PRO:HG3	2.51	0.46
1:A:145:GLY:HA3	1:A:157:ARG:HH11	1.81	0.46
1:A:243:LEU:HD11	1:A:283:ILE:HD13	1.97	0.46
1:A:9:SER:H	1:A:132:LYS:NZ	2.14	0.46
1:A:120:THR:HG22	1:D:123:HIS:CD2	2.50	0.45
1:A:212:GLU:O	1:A:217:GLY:HA3	2.16	0.45
1:D:309:SER:OG	1:D:355:ASN:ND2	2.49	0.45
1:A:350:TYR:HB3	1:A:352:TRP:NE1	2.32	0.45
1:D:61:SER:OG	1:D:62:HIS:N	2.50	0.45
1:A:153:MET:HE1	1:A:313:ARG:CZ	2.46	0.45
1:A:20:THR:C	1:A:22:GLU:H	2.20	0.45
1:A:193:ARG:NH2	1:A:272:ASP:OD1	2.49	0.45
1:A:324:PHE:CE2	1:A:360:MET:HG2	2.52	0.45
1:A:55:ILE:HD11	1:A:124:GLN:HB3	1.99	0.44
1:A:41:LEU:HA	1:A:41:LEU:HD12	1.73	0.44
1:A:188:HIS:O	1:A:191:SER:OG	2.32	0.44
1:D:65:PHE:HB2	1:D:70:ILE:HD11	1.98	0.44
1:D:96:ILE:H	1:D:96:ILE:HD12	1.82	0.44
1:A:74:VAL:HG13	1:A:82:TRP:CZ3	2.51	0.44
1:A:311:LYS:HD2	1:D:288:ILE:HD12	1.99	0.44
1:D:93:SER:N	1:D:97:CYS:SG	2.90	0.44
1:A:213:SER:OG	1:A:214:GLU:OE1	2.35	0.44
1:D:116:GLN:HB3	1:D:116:GLN:HE21	1.62	0.44
1:A:23:PRO:HB3	1:A:112:ILE:HD11	1.98	0.43

Continued on next page...

Continued from previous page...

Atom-1	Atom-2	Interatomic distance (Å)	Clash overlap (Å)
1:A:193:ARG:NH1	1:A:235:GLY:O	2.41	0.43
1:D:308:PRO:HG2	1:D:313:ARG:HD2	1.98	0.43
1:A:335:GLN:HG3	1:A:371:ASP:O	2.18	0.43
1:D:250:GLN:HB3	1:D:296:LEU:HD22	2.00	0.43
1:D:261:THR:HA	1:D:270:ALA:HA	1.99	0.43
1:A:74:VAL:HG21	1:A:99:PHE:HZ	1.82	0.43
1:D:172:ILE:O	1:D:278:ALA:HA	2.18	0.43
1:D:67:LEU:HD23	1:D:67:LEU:HA	1.90	0.43
1:D:102:ASN:O	1:D:104:CYS:N	2.51	0.43
1:D:245:LEU:HA	1:D:246:PRO:HD3	1.89	0.43
1:A:302:VAL:HG11	1:D:71:ALA:HB1	2.00	0.43
1:D:200:SER:HA	1:D:238:LEU:HB3	2.01	0.43
1:D:105:ILE:HD12	1:D:105:ILE:HA	1.63	0.42
1:D:376:ASP:OD2	1:D:379:GLN:HG3	2.19	0.42
1:A:76:SER:O	1:A:78:LYS:HE2	2.19	0.42
1:A:142:GLY:O	1:A:144:MET:N	2.50	0.42
1:D:24:TRP:CZ2	1:D:87:ARG:HG2	2.55	0.42
1:D:159:GLN:HG2	1:D:163:ILE:HD13	2.02	0.42
1:A:121:ILE:O	1:A:125:LEU:N	2.50	0.42
1:A:12:GLY:O	1:A:35:CYS:HA	2.20	0.42
1:A:188:HIS:NE2	1:A:193:ARG:O	2.53	0.42
1:D:85:PHE:CE2	1:D:121:ILE:HG12	2.54	0.41
1:A:62:HIS:NE2	1:A:89:ALA:HB3	2.35	0.41
1:D:216:PHE:HB2	1:D:263:GLU:HB3	2.01	0.41
1:A:356:VAL:O	1:A:360:MET:HG3	2.20	0.41
1:A:147:ILE:HD12	1:A:147:ILE:HA	1.74	0.41
1:A:227:PRO:O	1:A:231:GLN:HG3	2.21	0.41
1:A:183:VAL:HG21	1:A:307:VAL:CG1	2.51	0.41
1:A:211:LEU:HD23	1:A:249:GLN:HG3	2.03	0.41
1:D:135:TRP:N	1:D:136:PRO:HD2	2.36	0.41
1:D:197:PRO:O	1:D:235:GLY:HA3	2.21	0.41
1:D:30:LYS:HA	1:D:30:LYS:HD2	1.74	0.41
1:D:237:LEU:HB2	1:D:273:VAL:HG11	2.03	0.41
1:D:166:THR:O	1:D:167:ASP:HB2	2.21	0.40
1:D:170:ILE:HD12	1:D:187:ILE:HD12	2.02	0.40
1:A:343:ALA:O	1:A:347:LEU:N	2.54	0.40
1:D:47:LEU:O	1:D:51:THR:HG23	2.21	0.40
1:D:150:SER:H	1:D:153:MET:HB2	1.86	0.40
1:A:30:LYS:HD2	1:A:30:LYS:HA	1.79	0.40
1:A:50:GLU:HG3	1:A:51:THR:N	2.37	0.40

There are no symmetry-related clashes.

5.3 Torsion angles

5.3.1 Protein backbone

In the following table, the Percentiles column shows the percent Ramachandran outliers of the chain as a percentile score with respect to all X-ray entries followed by that with respect to entries of similar resolution.

The Analysed column shows the number of residues for which the backbone conformation was analysed, and the total number of residues.

Mol	Chain	Analysed	Favoured	Allowed	Outliers	Percentiles	
1	A	373/399 (94%)	309 (83%)	50 (13%)	14 (4%)	3	22
1	D	374/399 (94%)	310 (83%)	48 (13%)	16 (4%)	2	20
All	All	747/798 (94%)	619 (83%)	98 (13%)	30 (4%)	3	21

All (30) Ramachandran outliers are listed below:

Mol	Chain	Res	Type
1	A	23	PRO
1	A	94	ASP
1	A	103	PHE
1	A	146	LEU
1	A	147	ILE
1	D	23	PRO
1	D	83	LEU
1	D	103	PHE
1	A	63	ASP
1	A	90	GLN
1	A	92	SER
1	A	138	PHE
1	A	151	MET
1	D	92	SER
1	D	96	ILE
1	D	219	GLY
1	A	105	ILE
1	A	141	ALA
1	D	63	ASP
1	D	146	LEU
1	D	216	PHE
1	D	226	GLN
1	D	77	HIS
1	D	151	MET
1	D	223	GLU

Continued on next page...

Continued from previous page...

Mol	Chain	Res	Type
1	A	143	ASN
1	D	65	PHE
1	D	93	SER
1	D	140	SER
1	A	139	GLY

5.3.2 Protein sidechains ⓘ

In the following table, the Percentiles column shows the percent sidechain outliers of the chain as a percentile score with respect to all X-ray entries followed by that with respect to entries of similar resolution.

The Analysed column shows the number of residues for which the sidechain conformation was analysed, and the total number of residues.

Mol	Chain	Analysed	Rotameric	Outliers	Percentiles	
1	A	325/348 (93%)	299 (92%)	26 (8%)	12	42
1	D	325/348 (93%)	296 (91%)	29 (9%)	9	35
All	All	650/696 (93%)	595 (92%)	55 (8%)	10	38

All (55) residues with a non-rotameric sidechain are listed below:

Mol	Chain	Res	Type
1	A	10	VAL
1	A	14	LEU
1	A	38	VAL
1	A	40	ASP
1	A	51	THR
1	A	64	GLU
1	A	80	VAL
1	A	86	ILE
1	A	116	GLN
1	A	182	THR
1	A	202	ASN
1	A	204	ARG
1	A	209	LYS
1	A	211	LEU
1	A	225	GLN
1	A	253	LEU
1	A	255	ARG
1	A	262	VAL

Continued on next page...

Continued from previous page...

Mol	Chain	Res	Type
1	A	299	TYR
1	A	300	ILE
1	A	306	ASN
1	A	307	VAL
1	A	335	GLN
1	A	342	ASP
1	A	376	ASP
1	A	380	LEU
1	D	10	VAL
1	D	14	LEU
1	D	24	TRP
1	D	38	VAL
1	D	41	LEU
1	D	50	GLU
1	D	64	GLU
1	D	79	GLN
1	D	81	ARG
1	D	85	PHE
1	D	94	ASP
1	D	103	PHE
1	D	105	ILE
1	D	106	ASP
1	D	116	GLN
1	D	118	LEU
1	D	130	LEU
1	D	135	TRP
1	D	138	PHE
1	D	202	ASN
1	D	211	LEU
1	D	225	GLN
1	D	265	ARG
1	D	283	ILE
1	D	300	ILE
1	D	313	ARG
1	D	333	ASN
1	D	335	GLN
1	D	371	ASP

Sometimes sidechains can be flipped to improve hydrogen bonding and reduce clashes. All (19) such sidechains are listed below:

Mol	Chain	Res	Type
1	A	68	ASN

Continued on next page...

Continued from previous page...

Mol	Chain	Res	Type
1	A	90	GLN
1	A	98	GLN
1	A	102	ASN
1	A	159	GLN
1	A	225	GLN
1	A	335	GLN
1	A	355	ASN
1	A	361	ASN
1	A	362	GLN
1	D	37	GLN
1	D	77	HIS
1	D	79	GLN
1	D	116	GLN
1	D	226	GLN
1	D	250	GLN
1	D	335	GLN
1	D	355	ASN
1	D	362	GLN

5.3.3 RNA [i](#)

There are no RNA molecules in this entry.

5.4 Non-standard residues in protein, DNA, RNA chains [i](#)

There are no non-standard protein/DNA/RNA residues in this entry.

5.5 Carbohydrates [i](#)

There are no monosaccharides in this entry.

5.6 Ligand geometry [i](#)

2 ligands are modelled in this entry.

In the following table, the Counts columns list the number of bonds (or angles) for which Mogul statistics could be retrieved, the number of bonds (or angles) that are observed in the model and the number of bonds (or angles) that are defined in the Chemical Component Dictionary. The Link column lists molecule types, if any, to which the group is linked. The Z score for a bond length (or angle) is the number of standard deviations the observed value is removed from the

expected value. A bond length (or angle) with $|Z| > 2$ is considered an outlier worth inspection. RMSZ is the root-mean-square of all Z scores of the bond lengths (or angles).

Mol	Type	Chain	Res	Link	Bond lengths			Bond angles		
					Counts	RMSZ	$\# Z > 2$	Counts	RMSZ	$\# Z > 2$
2	GTP	D	501	-	26,34,34	3.84	14 (53%)	33,54,54	1.85	7 (21%)
2	GTP	A	501	-	26,34,34	3.84	12 (46%)	33,54,54	1.98	7 (21%)

In the following table, the Chirals column lists the number of chiral outliers, the number of chiral centers analysed, the number of these observed in the model and the number defined in the Chemical Component Dictionary. Similar counts are reported in the Torsion and Rings columns. '-' means no outliers of that kind were identified.

Mol	Type	Chain	Res	Link	Chirals	Torsions	Rings
2	GTP	D	501	-	-	4/18/38/38	0/3/3/3
2	GTP	A	501	-	-	6/18/38/38	0/3/3/3

All (26) bond length outliers are listed below:

Mol	Chain	Res	Type	Atoms	Z	Observed(Å)	Ideal(Å)
2	A	501	GTP	C2'-C3'	-10.36	1.25	1.53
2	D	501	GTP	C2'-C3'	-10.27	1.25	1.53
2	A	501	GTP	C2'-C1'	6.69	1.63	1.53
2	A	501	GTP	O4'-C1'	-6.57	1.31	1.41
2	D	501	GTP	C2'-C1'	6.56	1.63	1.53
2	D	501	GTP	O4'-C1'	-6.56	1.31	1.41
2	D	501	GTP	C4-N3	6.04	1.45	1.35
2	A	501	GTP	C4-N3	5.96	1.45	1.35
2	D	501	GTP	C5-C6	5.86	1.51	1.41
2	A	501	GTP	C5-C6	5.71	1.51	1.41
2	A	501	GTP	C2-N1	5.57	1.45	1.35
2	D	501	GTP	C2-N1	5.51	1.45	1.35
2	D	501	GTP	C2-N2	4.60	1.43	1.33
2	A	501	GTP	C2-N2	4.54	1.43	1.33
2	A	501	GTP	C6-N1	4.04	1.40	1.33
2	D	501	GTP	C6-N1	4.00	1.40	1.33
2	A	501	GTP	C5'-C4'	-3.57	1.40	1.51
2	D	501	GTP	C5'-C4'	-3.40	1.41	1.51
2	D	501	GTP	O3'-C3'	3.23	1.50	1.43
2	A	501	GTP	O3'-C3'	3.21	1.50	1.43
2	D	501	GTP	C3'-C4'	2.83	1.60	1.53
2	D	501	GTP	O6-C6	-2.73	1.17	1.24
2	A	501	GTP	O6-C6	-2.72	1.17	1.24
2	A	501	GTP	C3'-C4'	2.60	1.59	1.53

Continued on next page...

Continued from previous page...

Mol	Chain	Res	Type	Atoms	Z	Observed(Å)	Ideal(Å)
2	D	501	GTP	O4'-C4'	2.01	1.49	1.45
2	D	501	GTP	C2-N3	2.01	1.44	1.34

All (14) bond angle outliers are listed below:

Mol	Chain	Res	Type	Atoms	Z	Observed(°)	Ideal(°)
2	A	501	GTP	N3-C2-N1	-5.42	119.99	127.22
2	D	501	GTP	N3-C2-N1	-5.32	120.13	127.22
2	A	501	GTP	C3'-C2'-C1'	4.82	108.23	100.98
2	D	501	GTP	C2-N3-C4	4.26	120.22	115.36
2	A	501	GTP	PB-O3B-PG	-4.18	118.47	132.83
2	A	501	GTP	C2-N3-C4	4.09	120.03	115.36
2	D	501	GTP	C3'-C2'-C1'	3.75	106.62	100.98
2	D	501	GTP	PA-O3A-PB	-2.77	123.31	132.83
2	A	501	GTP	C5-C6-N1	-2.66	119.79	123.43
2	D	501	GTP	PB-O3B-PG	-2.64	123.78	132.83
2	D	501	GTP	C5-C6-N1	-2.59	119.89	123.43
2	A	501	GTP	C2-N1-C6	2.46	119.84	115.93
2	D	501	GTP	C2-N1-C6	2.34	119.65	115.93
2	A	501	GTP	PA-O3A-PB	-2.22	125.22	132.83

There are no chirality outliers.

All (10) torsion outliers are listed below:

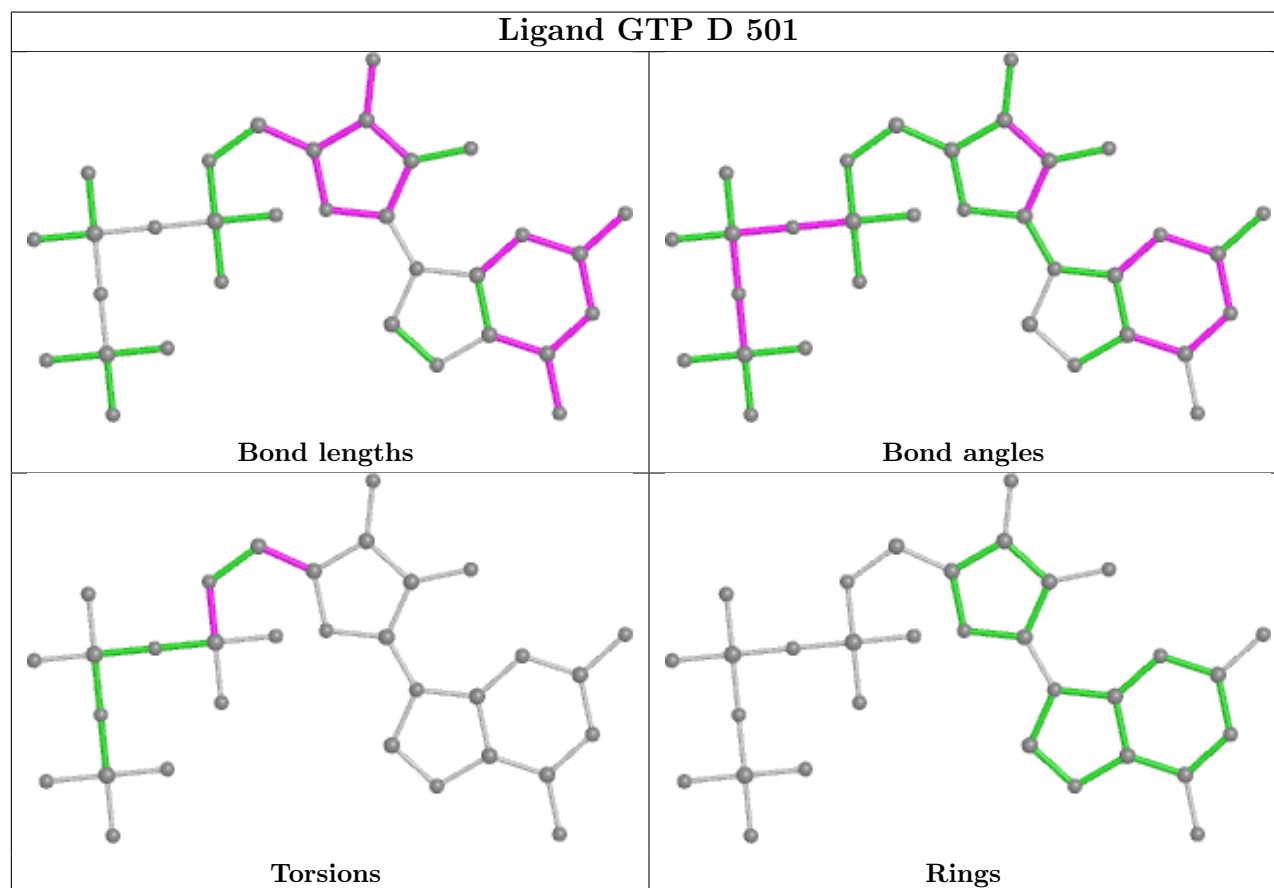
Mol	Chain	Res	Type	Atoms
2	A	501	GTP	C5'-O5'-PA-O3A
2	A	501	GTP	C5'-O5'-PA-O2A
2	D	501	GTP	C3'-C4'-C5'-O5'
2	A	501	GTP	C4'-C5'-O5'-PA
2	D	501	GTP	O4'-C4'-C5'-O5'
2	A	501	GTP	C3'-C4'-C5'-O5'
2	A	501	GTP	O4'-C4'-C5'-O5'
2	D	501	GTP	C5'-O5'-PA-O3A
2	A	501	GTP	C5'-O5'-PA-O1A
2	D	501	GTP	C5'-O5'-PA-O2A

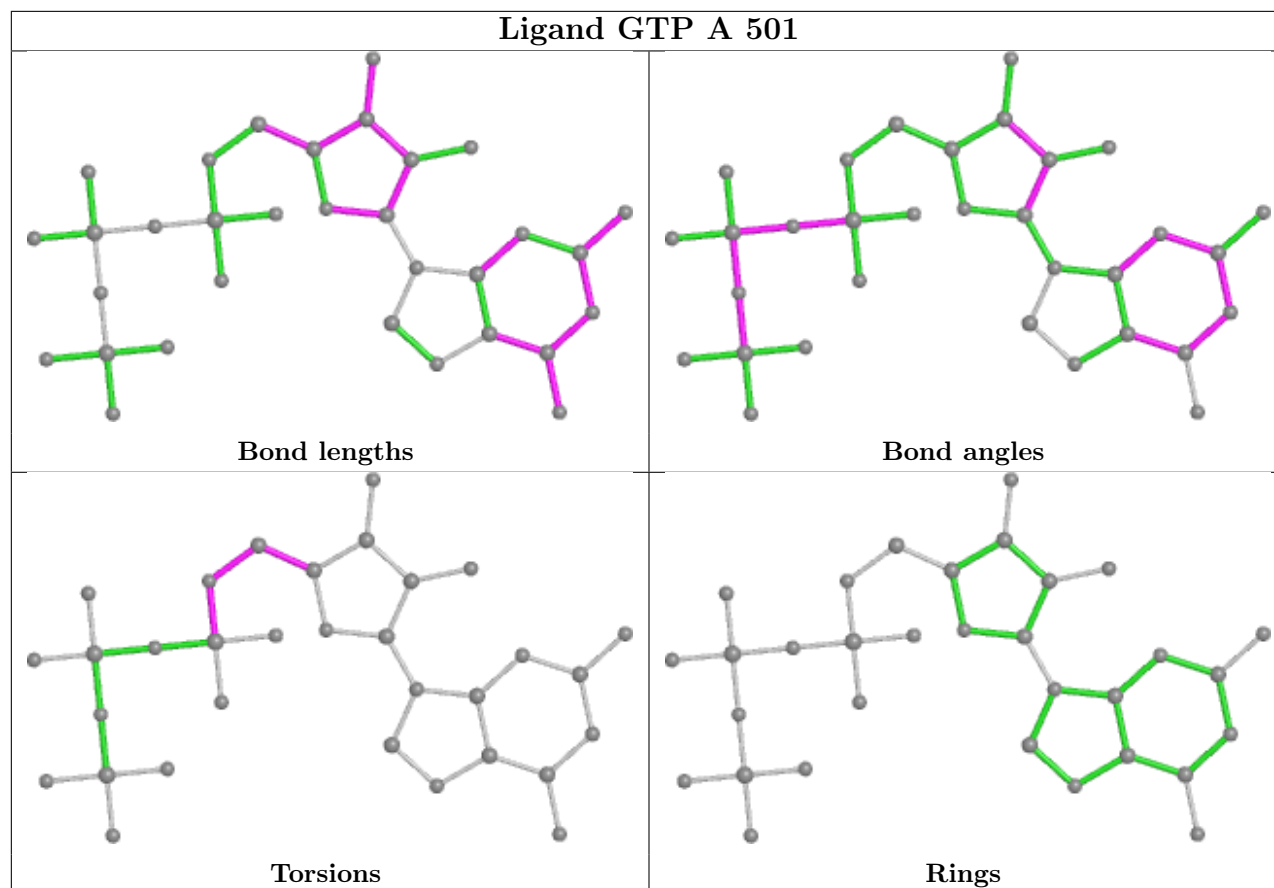
There are no ring outliers.

1 monomer is involved in 1 short contact:

Mol	Chain	Res	Type	Clashes	Symm-Clashes
2	A	501	GTP	1	0

The following is a two-dimensional graphical depiction of Mogul quality analysis of bond lengths, bond angles, torsion angles, and ring geometry for all instances of the Ligand of Interest. In addition, ligands with molecular weight > 250 and outliers as shown on the validation Tables will also be included. For torsion angles, if less than 5% of the Mogul distribution of torsion angles is within 10 degrees of the torsion angle in question, then that torsion angle is considered an outlier. Any bond that is central to one or more torsion angles identified as an outlier by Mogul will be highlighted in the graph. For rings, the root-mean-square deviation (RMSD) between the ring in question and similar rings identified by Mogul is calculated over all ring torsion angles. If the average RMSD is greater than 60 degrees and the minimal RMSD between the ring in question and any Mogul-identified rings is also greater than 60 degrees, then that ring is considered an outlier. The outliers are highlighted in purple. The color gray indicates Mogul did not find sufficient equivalents in the CSD to analyse the geometry.





5.7 Other polymers [i](#)

There are no such residues in this entry.

5.8 Polymer linkage issues [i](#)

There are no chain breaks in this entry.

6 Fit of model and data

6.1 Protein, DNA and RNA chains

In the following table, the column labelled ‘#RSRZ > 2’ contains the number (and percentage) of RSRZ outliers, followed by percent RSRZ outliers for the chain as percentile scores relative to all X-ray entries and entries of similar resolution. The OWAB column contains the minimum, median, 95th percentile and maximum values of the occupancy-weighted average B-factor per residue. The column labelled ‘Q < 0.9’ lists the number of (and percentage) of residues with an average occupancy less than 0.9.

Mol	Chain	Analysed	<RSRZ>	#RSRZ>2	OWAB(Å ²)	Q<0.9
1	A	375/399 (93%)	0.30	29 (7%) 13 7	96, 150, 258, 348	0
1	D	376/399 (94%)	0.37	32 (8%) 10 6	101, 152, 243, 345	0
All	All	751/798 (94%)	0.34	61 (8%) 12 6	96, 151, 252, 348	0

All (61) RSRZ outliers are listed below:

Mol	Chain	Res	Type	RSRZ
1	A	77	HIS	11.2
1	A	79	GLN	6.9
1	D	77	HIS	6.7
1	D	217	GLY	5.9
1	D	79	GLN	5.8
1	A	225	GLN	5.6
1	A	76	SER	5.4
1	A	216	PHE	5.1
1	A	8	ASP	4.7
1	D	112	ILE	4.7
1	A	370	SER	4.2
1	D	230	LEU	4.1
1	D	62	HIS	4.0
1	D	339	PHE	4.0
1	D	103	PHE	3.9
1	A	62	HIS	3.9
1	D	17	VAL	3.7
1	A	220	GLU	3.6
1	D	218	LEU	3.5
1	D	229	LEU	3.5
1	A	339	PHE	3.5
1	A	9	SER	3.4
1	A	221	THR	3.4
1	A	103	PHE	3.4

Continued on next page...

Continued from previous page...

Mol	Chain	Res	Type	RSRZ
1	A	222	GLU	3.4
1	A	10	VAL	3.3
1	A	80	VAL	3.2
1	D	225	GLN	3.1
1	A	78	LYS	2.9
1	A	224	GLY	2.9
1	D	347	LEU	2.9
1	D	75	SER	2.8
1	A	102	ASN	2.8
1	D	310	LEU	2.6
1	D	80	VAL	2.6
1	D	375	LEU	2.5
1	D	39	ALA	2.5
1	D	20	THR	2.5
1	A	81	ARG	2.4
1	A	304	ARG	2.4
1	D	102	ASN	2.4
1	A	104	CYS	2.4
1	D	325	LEU	2.4
1	D	328	TYR	2.3
1	A	301	ASN	2.3
1	A	101	VAL	2.3
1	D	203	CYS	2.2
1	D	104	CYS	2.2
1	D	76	SER	2.2
1	D	271	VAL	2.2
1	A	298	HIS	2.2
1	A	75	SER	2.2
1	A	82	TRP	2.1
1	D	221	THR	2.1
1	D	332	TYR	2.1
1	D	220	GLU	2.1
1	D	16	VAL	2.1
1	D	211	LEU	2.1
1	A	20	THR	2.0
1	D	317	ILE	2.0
1	A	27	VAL	2.0

6.2 Non-standard residues in protein, DNA, RNA chains

There are no non-standard protein/DNA/RNA residues in this entry.

6.3 Carbohydrates [i](#)

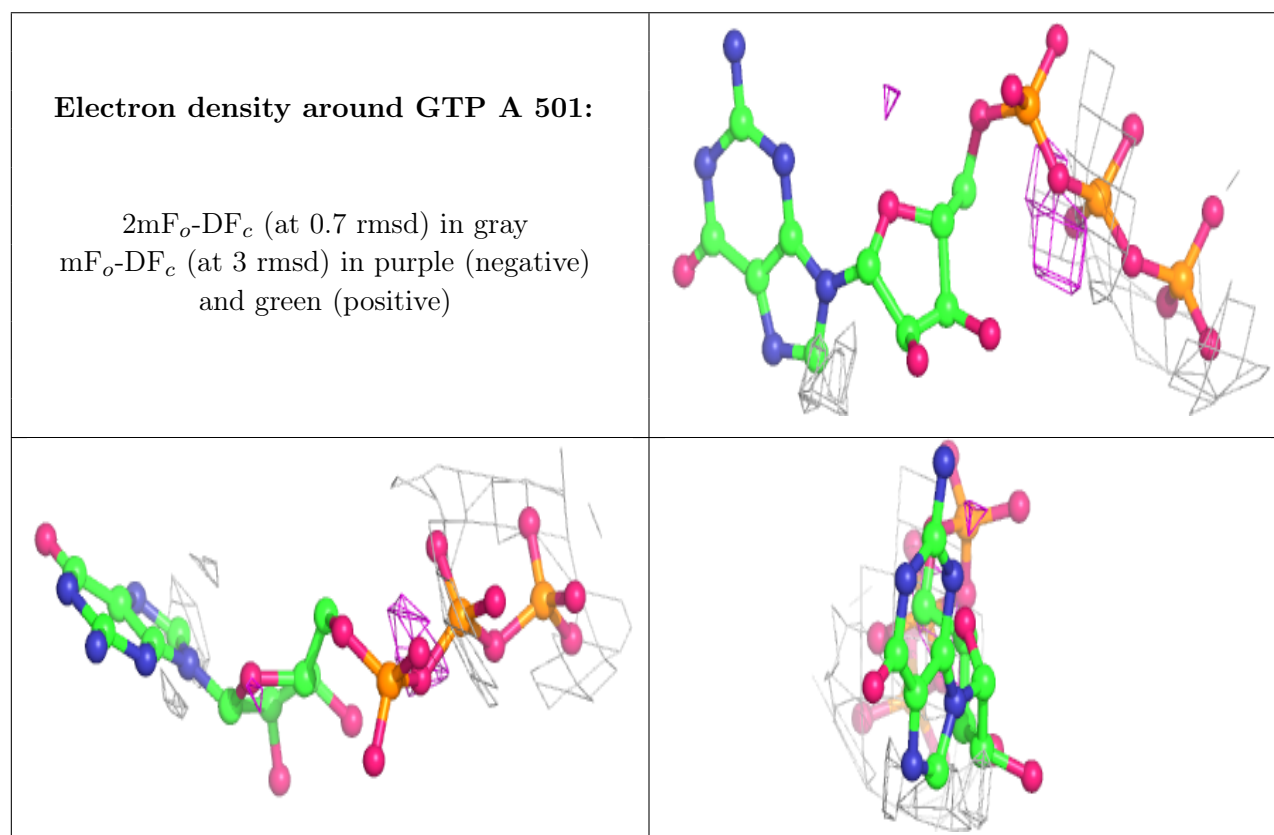
There are no monosaccharides in this entry.

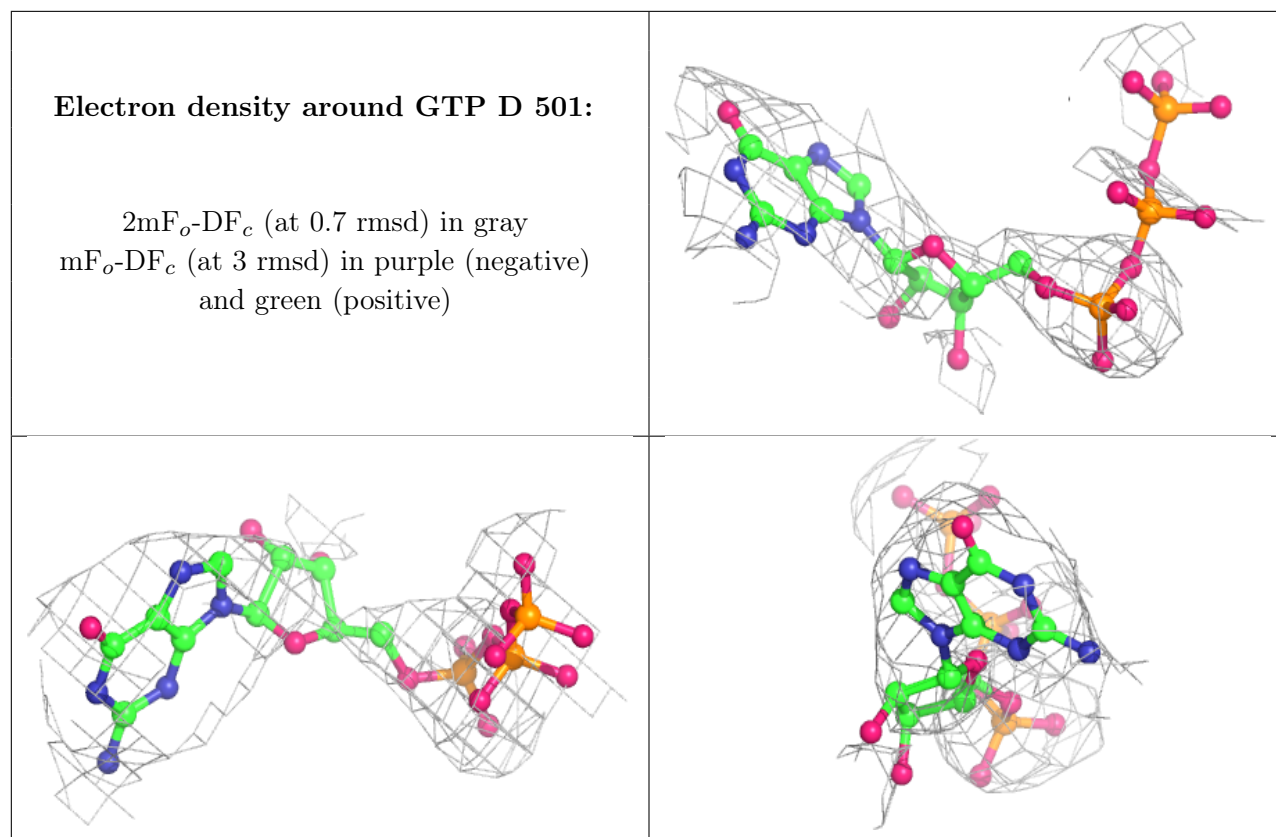
6.4 Ligands [i](#)

In the following table, the Atoms column lists the number of modelled atoms in the group and the number defined in the chemical component dictionary. The B-factors column lists the minimum, median, 95th percentile and maximum values of B factors of atoms in the group. The column labelled 'Q< 0.9' lists the number of atoms with occupancy less than 0.9.

Mol	Type	Chain	Res	Atoms	RSCC	RSR	B-factors(Å ²)	Q<0.9
2	GTP	A	501	32/32	0.86	0.41	110,322,464,465	0
2	GTP	D	501	32/32	0.87	0.22	121,233,491,542	0

The following is a graphical depiction of the model fit to experimental electron density of all instances of the Ligand of Interest. In addition, ligands with molecular weight > 250 and outliers as shown on the geometry validation Tables will also be included. Each fit is shown from different orientation to approximate a three-dimensional view.





6.5 Other polymers [i](#)

There are no such residues in this entry.