



Full wwPDB X-ray Structure Validation Report ⓘ

Jun 15, 2020 – 11:17 pm BST

PDB ID : 4V3C
Title : The structure of alpha2,3-sialyltransferase variant 2 from Pasteurella dagmatis in complex with the donor product CMP
Authors : Pavkov-Keller, T.; Schmoelzer, K.; Czabany, T.; Luley-Goedl, C.; Ribitsch, D.; Schwab, H.; Nidetzky, B.; Gruber, K.
Deposited on : 2014-10-17
Resolution : 1.84 Å(reported)

This is a Full wwPDB X-ray Structure Validation Report for a publicly released PDB entry.

We welcome your comments at validation@mail.wwpdb.org

A user guide is available at

<https://www.wwpdb.org/validation/2017/XrayValidationReportHelp>

with specific help available everywhere you see the ⓘ symbol.

The following versions of software and data (see [references ⓘ](#)) were used in the production of this report:

MolProbity	:	4.02b-467
Xtriage (Phenix)	:	1.13
EDS	:	2.11
Percentile statistics	:	20191225.v01 (using entries in the PDB archive December 25th 2019)
Refmac	:	5.8.0158
CCP4	:	7.0.044 (Gargrove)
Ideal geometry (proteins)	:	Engh & Huber (2001)
Ideal geometry (DNA, RNA)	:	Parkinson et al. (1996)
Validation Pipeline (wwPDB-VP)	:	2.11

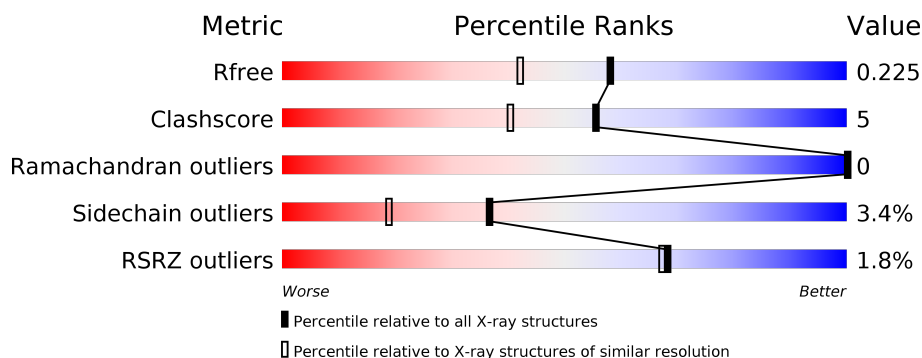
1 Overall quality at a glance

The following experimental techniques were used to determine the structure:

X-RAY DIFFRACTION

The reported resolution of this entry is 1.84 Å.

Percentile scores (ranging between 0-100) for global validation metrics of the entry are shown in the following graphic. The table shows the number of entries on which the scores are based.



Metric	Whole archive (#Entries)	Similar resolution (#Entries, resolution range(Å))
R_{free}	130704	4003 (1.86-1.82)
Clashscore	141614	4233 (1.86-1.82)
Ramachandran outliers	138981	4185 (1.86-1.82)
Sidechain outliers	138945	4186 (1.86-1.82)
RSRZ outliers	127900	3957 (1.86-1.82)

The table below summarises the geometric issues observed across the polymeric chains and their fit to the electron density. The red, orange, yellow and green segments on the lower bar indicate the fraction of residues that contain outliers for ≥ 3 , 2, 1 and 0 types of geometric quality criteria respectively. A grey segment represents the fraction of residues that are not modelled. The numeric value for each fraction is indicated below the corresponding segment, with a dot representing fractions $\leq 5\%$. The upper red bar (where present) indicates the fraction of residues that have poor fit to the electron density. The numeric value is given above the bar.

Mol	Chain	Length	Quality of chain
1	A	388	<div> <div>2%</div> <div>86%</div> <div>12%</div> </div>

2 Entry composition [i](#)

There are 3 unique types of molecules in this entry. The entry contains 3566 atoms, of which 0 are hydrogens and 0 are deuteriums.

In the tables below, the ZeroOcc column contains the number of atoms modelled with zero occupancy, the AltConf column contains the number of residues with at least one atom in alternate conformation and the Trace column contains the number of residues modelled with at most 2 atoms.

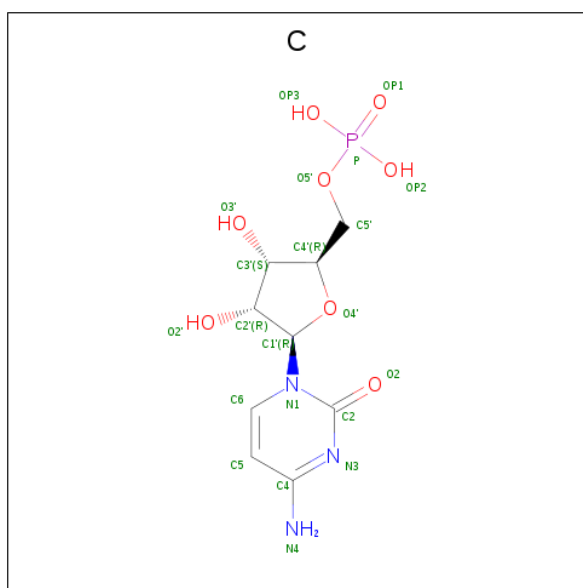
- Molecule 1 is a protein called SIALYLTRANSFERASE.

Mol	Chain	Residues	Atoms					ZeroOcc	AltConf	Trace
1	A	388	Total	C	N	O	S	0	3	0
			3248	2107	530	605	6			

There are 6 discrepancies between the modelled and reference sequences:

Chain	Residue	Modelled	Actual	Comment	Reference
A	-2	SER	-	expression tag	UNP K9UUI6
A	-1	LYS	-	expression tag	UNP K9UUI6
A	0	THR	-	expression tag	UNP K9UUI6
A	1	ILE	-	expression tag	UNP K9UUI6
A	7	HIS	PRO	engineered mutation	UNP K9UUI6
A	117	ALA	MET	engineered mutation	UNP K9UUI6

- Molecule 2 is CYTIDINE-5'-MONOPHOSPHATE (three-letter code: C) (formula: $C_9H_{14}N_3O_8P$).



Mol	Chain	Residues	Atoms					ZeroOcc	AltConf
2	A	1	Total	C	N	O	P	0	0
			21	9	3	8	1		

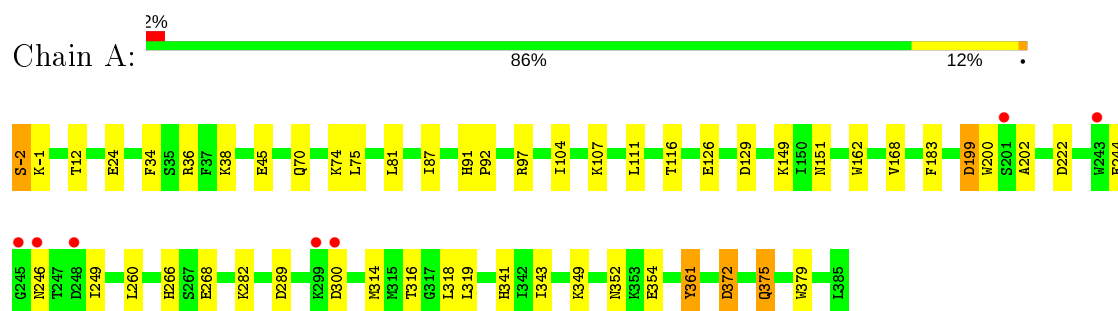
- Molecule 3 is water.

Mol	Chain	Residues	Atoms		ZeroOcc	AltConf
3	A	297	Total	O	0	0
			297	297		

3 Residue-property plots

These plots are drawn for all protein, RNA and DNA chains in the entry. The first graphic for a chain summarises the proportions of the various outlier classes displayed in the second graphic. The second graphic shows the sequence view annotated by issues in geometry and electron density. Residues are color-coded according to the number of geometric quality criteria for which they contain at least one outlier: green = 0, yellow = 1, orange = 2 and red = 3 or more. A red dot above a residue indicates a poor fit to the electron density ($RSRZ > 2$). Stretches of 2 or more consecutive residues without any outlier are shown as a green connector. Residues present in the sample, but not in the model, are shown in grey.

• Molecule 1: SIALYLTRANSFERASE



4 Data and refinement statistics

Property	Value	Source
Space group	P 65	Depositor
Cell constants a, b, c, α , β , γ	111.75Å 111.75Å 65.19Å 90.00° 90.00° 120.00°	Depositor
Resolution (Å)	96.00 – 1.84 42.42 – 1.84	Depositor EDS
% Data completeness (in resolution range)	99.7 (96.00-1.84) 99.7 (42.42-1.84)	Depositor EDS
R_{merge}	0.06	Depositor
R_{sym}	(Not available)	Depositor
$\langle I/\sigma(I) \rangle$ ¹	2.10 (at 1.84Å)	Xtriage
Refinement program	REFMAC 5.8.0073	Depositor
R, R_{free}	0.173 , 0.218 0.183 , 0.225	Depositor DCC
R_{free} test set	2006 reflections (4.99%)	wwPDB-VP
Wilson B-factor (Å ²)	33.6	Xtriage
Anisotropy	0.068	Xtriage
Bulk solvent k_{sol} (e/Å ³), B_{sol} (Å ²)	0.34 , 42.4	EDS
L-test for twinning ²	$\langle L \rangle = 0.49$, $\langle L^2 \rangle = 0.32$	Xtriage
Estimated twinning fraction	0.043 for h,-h-k,-l	Xtriage
F_o, F_c correlation	0.97	EDS
Total number of atoms	3566	wwPDB-VP
Average B, all atoms (Å ²)	41.0	wwPDB-VP

Xtriage's analysis on translational NCS is as follows: *The largest off-origin peak in the Patterson function is 3.79% of the height of the origin peak. No significant pseudotranslation is detected.*

¹Intensities estimated from amplitudes.

²Theoretical values of $\langle |L| \rangle$, $\langle L^2 \rangle$ for acentric reflections are 0.5, 0.333 respectively for untwinned datasets, and 0.375, 0.2 for perfectly twinned datasets.

5 Model quality [i](#)

5.1 Standard geometry [i](#)

The Z score for a bond length (or angle) is the number of standard deviations the observed value is removed from the expected value. A bond length (or angle) with $|Z| > 5$ is considered an outlier worth inspection. RMSZ is the root-mean-square of all Z scores of the bond lengths (or angles).

Mol	Chain	Bond lengths		Bond angles	
		RMSZ	$\# Z > 5$	RMSZ	$\# Z > 5$
1	A	0.72	0/3330	0.81	2/4497 (0.0%)

Chiral center outliers are detected by calculating the chiral volume of a chiral center and verifying if the center is modelled as a planar moiety or with the opposite hand. A planarity outlier is detected by checking planarity of atoms in a peptide group, atoms in a mainchain group or atoms of a sidechain that are expected to be planar.

Mol	Chain	#Chirality outliers	#Planarity outliers
1	A	0	1

There are no bond length outliers.

All (2) bond angle outliers are listed below:

Mol	Chain	Res	Type	Atoms	Z	Observed($^{\circ}$)	Ideal($^{\circ}$)
1	A	36	ARG	NE-CZ-NH2	-5.95	117.32	120.30
1	A	129	ASP	CB-CG-OD1	5.28	123.05	118.30

There are no chirality outliers.

All (1) planarity outliers are listed below:

Mol	Chain	Res	Type	Group
1	A	-2	SER	Peptide

5.2 Too-close contacts [i](#)

In the following table, the Non-H and H(model) columns list the number of non-hydrogen atoms and hydrogen atoms in the chain respectively. The H(added) column lists the number of hydrogen atoms added and optimized by MolProbity. The Clashes column lists the number of clashes within the asymmetric unit, whereas Symm-Clashes lists symmetry related clashes.

Mol	Chain	Non-H	H(model)	H(added)	Clashes	Symm-Clashes
1	A	3248	0	3231	33	0
2	A	21	0	12	0	0
3	A	297	0	0	11	0
All	All	3566	0	3243	33	0

The all-atom clashscore is defined as the number of clashes found per 1000 atoms (including hydrogen atoms). The all-atom clashscore for this structure is 5.

All (33) close contacts within the same asymmetric unit are listed below, sorted by their clash magnitude.

Atom-1	Atom-2	Interatomic distance (Å)	Clash overlap (Å)
1:A:70:GLN:HG2	3:A:2075:HOH:O	1.89	0.73
1:A:202:ALA:N	3:A:2189:HOH:O	2.23	0.70
1:A:97:ARG:NH1	1:A:104:ILE:O	2.29	0.65
1:A:200:TRP:HB2	1:A:314:MET:HE1	1.78	0.63
1:A:107:LYS:HE2	3:A:2081:HOH:O	2.01	0.61
1:A:200:TRP:HB2	1:A:314:MET:CE	2.31	0.60
1:A:316:THR:OG1	1:A:318:LEU:HD13	2.03	0.58
1:A:75:LEU:HD12	1:A:104:ILE:CD1	2.36	0.55
1:A:246:ASN:N	3:A:2221:HOH:O	2.38	0.55
1:A:314:MET:HB2	1:A:319:LEU:HD21	1.89	0.55
1:A:91:HIS:HB3	1:A:92:PRO:HD3	1.88	0.55
1:A:349:LYS:O	3:A:2284:HOH:O	2.19	0.53
1:A:116:THR:HG21	1:A:361:TYR:OH	2.09	0.53
1:A:199:ASP:HB3	3:A:2189:HOH:O	2.08	0.53
1:A:126:GLU:HA	1:A:183:PHE:CD2	2.44	0.52
1:A:244:GLU:HG2	1:A:249:ILE:HD12	1.92	0.51
1:A:260:LEU:HD11	1:A:343:ILE:HG13	1.93	0.51
1:A:352:ASN:OD1	1:A:354:GLU:HG2	2.12	0.50
1:A:314:MET:HG3	1:A:319:LEU:HD11	1.95	0.49
1:A:300:ASP:CG	3:A:2250:HOH:O	2.53	0.47
1:A:12:THR:HG21	1:A:38:LYS:HE2	1.98	0.46
1:A:34:PHE:CD1	1:A:38:LYS:HD3	2.52	0.44
1:A:151:ASN:HB2	3:A:2146:HOH:O	2.18	0.44
1:A:-2:SER:HA	1:A:74:LYS:O	2.17	0.44
1:A:75:LEU:HD12	1:A:104:ILE:HD12	2.00	0.43
1:A:111:LEU:HD12	1:A:168:VAL:CG2	2.48	0.43
1:A:200:TRP:CB	1:A:314:MET:CE	2.97	0.43
1:A:87[A]:ILE:HD13	1:A:162:TRP:CZ2	2.54	0.42
1:A:-1:LYS:NZ	3:A:2002:HOH:O	2.51	0.42
1:A:268:GLU:H	1:A:268:GLU:CD	2.23	0.42
1:A:222:ASP:HB3	3:A:2202:HOH:O	2.19	0.42

Continued on next page...

Continued from previous page...

Atom-1	Atom-2	Interatomic distance (Å)	Clash overlap (Å)
1:A:372:ASP:O	1:A:375:GLN:HG3	2.20	0.41
1:A:24:GLU:HG2	3:A:2027:HOH:O	2.19	0.41

There are no symmetry-related clashes.

5.3 Torsion angles [i](#)

5.3.1 Protein backbone [i](#)

In the following table, the Percentiles column shows the percent Ramachandran outliers of the chain as a percentile score with respect to all X-ray entries followed by that with respect to entries of similar resolution.

The Analysed column shows the number of residues for which the backbone conformation was analysed, and the total number of residues.

Mol	Chain	Analysed	Favoured	Allowed	Outliers	Percentiles	
1	A	389/388 (100%)	382 (98%)	7 (2%)	0	100	100

There are no Ramachandran outliers to report.

5.3.2 Protein sidechains [i](#)

In the following table, the Percentiles column shows the percent sidechain outliers of the chain as a percentile score with respect to all X-ray entries followed by that with respect to entries of similar resolution.

The Analysed column shows the number of residues for which the sidechain conformation was analysed, and the total number of residues.

Mol	Chain	Analysed	Rotameric	Outliers	Percentiles	
1	A	360/357 (101%)	348 (97%)	12 (3%)	38	20

All (12) residues with a non-rotameric sidechain are listed below:

Mol	Chain	Res	Type
1	A	45	GLU
1	A	81	LEU
1	A	149	LYS
1	A	199	ASP

Continued on next page...

Continued from previous page...

Mol	Chain	Res	Type
1	A	266	HIS
1	A	282	LYS
1	A	289	ASP
1	A	341	HIS
1	A	361	TYR
1	A	372	ASP
1	A	375	GLN
1	A	379	TRP

Some sidechains can be flipped to improve hydrogen bonding and reduce clashes. All (1) such sidechains are listed below:

Mol	Chain	Res	Type
1	A	127	ASN

5.3.3 RNA ⓘ

There are no RNA molecules in this entry.

5.4 Non-standard residues in protein, DNA, RNA chains ⓘ

There are no non-standard protein/DNA/RNA residues in this entry.

5.5 Carbohydrates ⓘ

There are no carbohydrates in this entry.

5.6 Ligand geometry ⓘ

1 ligand is modelled in this entry.

There are no bond length outliers.

There are no bond angle outliers.

There are no chirality outliers.

There are no torsion outliers.

There are no ring outliers.

No monomer is involved in short contacts.

5.7 Other polymers

There are no such residues in this entry.

5.8 Polymer linkage issues

There are no chain breaks in this entry.

6 Fit of model and data ⓘ

6.1 Protein, DNA and RNA chains ⓘ

In the following table, the column labelled ‘#RSRZ> 2’ contains the number (and percentage) of RSRZ outliers, followed by percent RSRZ outliers for the chain as percentile scores relative to all X-ray entries and entries of similar resolution. The OWAB column contains the minimum, median, 95th percentile and maximum values of the occupancy-weighted average B-factor per residue. The column labelled ‘Q< 0.9’ lists the number of (and percentage) of residues with an average occupancy less than 0.9.

Mol	Chain	Analysed	<RSRZ>	#RSRZ>2	OWAB(Å ²)	Q<0.9
1	A	388/388 (100%)	-0.21	7 (1%) 68 67	24, 37, 65, 92	0

All (7) RSRZ outliers are listed below:

Mol	Chain	Res	Type	RSRZ
1	A	243	TRP	4.1
1	A	300	ASP	3.8
1	A	246	ASN	2.9
1	A	299	LYS	2.9
1	A	248	ASP	2.5
1	A	201	SER	2.3
1	A	245	GLY	2.1

6.2 Non-standard residues in protein, DNA, RNA chains ⓘ

There are no non-standard protein/DNA/RNA residues in this entry.

6.3 Carbohydrates ⓘ

There are no carbohydrates in this entry.

6.4 Ligands ⓘ

In the following table, the Atoms column lists the number of modelled atoms in the group and the number defined in the chemical component dictionary. The B-factors column lists the minimum, median, 95th percentile and maximum values of B factors of atoms in the group. The column labelled ‘Q< 0.9’ lists the number of atoms with occupancy less than 0.9.

Mol	Type	Chain	Res	Atoms	RSCC	RSR	B-factors(Å ²)	Q<0.9
2	C	A	1386	21/21	0.99	0.09	25,28,30,30	0

6.5 Other polymers [i](#)

There are no such residues in this entry.