



# Full wwPDB X-ray Structure Validation Report ⓘ

Apr 7, 2022 – 03:40 PM EDT

PDB ID : 3V4E  
Title : Crystal Structure of the galactoside O-acetyltransferase in complex with CoA  
Authors : Knapik, A.A.; Shumilin, I.A.; Luo, H.-B.; Chruszcz, M.; Zimmerman, M.D.; Cymborowski, M.; Anderson, W.F.; Minor, W.; Center for Structural Genomics of Infectious Diseases (CSGID)  
Deposited on : 2011-12-14  
Resolution : 1.95 Å(reported)

This is a Full wwPDB X-ray Structure Validation Report for a publicly released PDB entry.

We welcome your comments at [validation@mail.wwpdb.org](mailto:validation@mail.wwpdb.org)

A user guide is available at

<https://www.wwpdb.org/validation/2017/XrayValidationReportHelp>

with specific help available everywhere you see the ⓘ symbol.

---

The following versions of software and data (see [references ⓘ](#)) were used in the production of this report:

MolProbity	:	4.02b-467
Mogul	:	1.8.5 (274361), CSD as541be (2020)
Xtriage (Phenix)	:	1.13
EDS	:	2.27
buster-report	:	1.1.7 (2018)
Percentile statistics	:	20191225.v01 (using entries in the PDB archive December 25th 2019)
Refmac	:	5.8.0158
CCP4	:	7.0.044 (Gargrove)
Ideal geometry (proteins)	:	Engh & Huber (2001)
Ideal geometry (DNA, RNA)	:	Parkinson et al. (1996)
Validation Pipeline (wwPDB-VP)	:	2.27

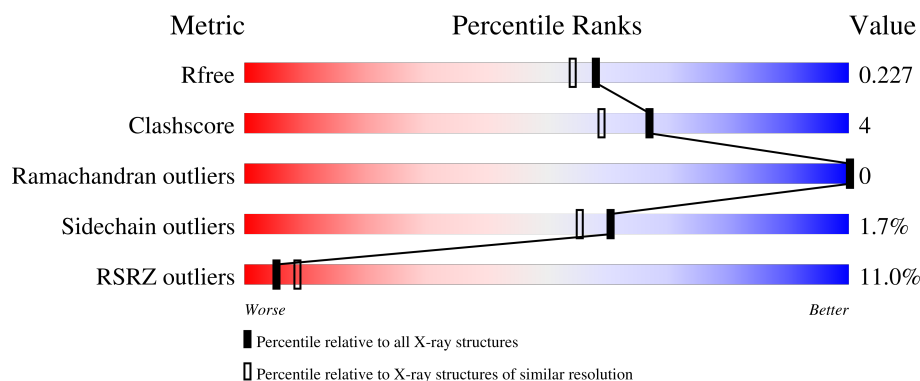
# 1 Overall quality at a glance

The following experimental techniques were used to determine the structure:

*X-RAY DIFFRACTION*

The reported resolution of this entry is 1.95 Å.

Percentile scores (ranging between 0-100) for global validation metrics of the entry are shown in the following graphic. The table shows the number of entries on which the scores are based.



Metric	Whole archive (#Entries)	Similar resolution (#Entries, resolution range(Å))
$R_{free}$	130704	2580 (1.96-1.96)
Clashscore	141614	2705 (1.96-1.96)
Ramachandran outliers	138981	2678 (1.96-1.96)
Sidechain outliers	138945	2678 (1.96-1.96)
RSRZ outliers	127900	2539 (1.96-1.96)

The table below summarises the geometric issues observed across the polymeric chains and their fit to the electron density. The red, orange, yellow and green segments of the lower bar indicate the fraction of residues that contain outliers for  $\geq 3$ , 2, 1 and 0 types of geometric quality criteria respectively. A grey segment represents the fraction of residues that are not modelled. The numeric value for each fraction is indicated below the corresponding segment, with a dot representing fractions  $\leq 5\%$ . The upper red bar (where present) indicates the fraction of residues that have poor fit to the electron density. The numeric value is given above the bar.

Mol	Chain	Length	Quality of chain
1	A	202	<div> <div>10%</div> <div>82%</div> <div>11%</div> <div>7%</div> </div>
1	B	202	<div> <div>11%</div> <div>84%</div> <div>9%</div> <div>7%</div> </div>
1	C	202	<div> <div>9%</div> <div>84%</div> <div>9%</div> <div>7%</div> </div>

## 2 Entry composition

There are 6 unique types of molecules in this entry. The entry contains 4762 atoms, of which 0 are hydrogens and 0 are deuteriums.

In the tables below, the ZeroOcc column contains the number of atoms modelled with zero occupancy, the AltConf column contains the number of residues with at least one atom in alternate conformation and the Trace column contains the number of residues modelled with at most 2 atoms.

- Molecule 1 is a protein called Galactoside O-acetyltransferase.

Mol	Chain	Residues	Atoms					ZeroOcc	AltConf	Trace
1	A	188	Total	C	N	O	S	0	1	0
			1473	933	254	279	7			
1	B	188	Total	C	N	O	S	0	0	0
			1462	926	254	275	7			
1	C	188	Total	C	N	O	S	0	0	0
			1461	926	253	275	7			

There are 9 discrepancies between the modelled and reference sequences:

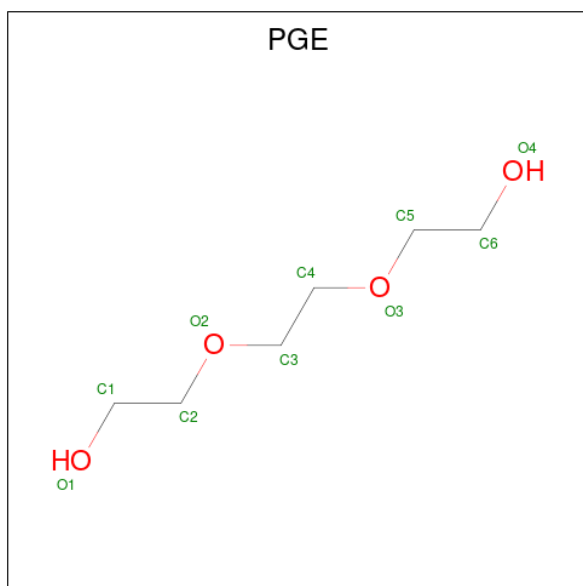
Chain	Residue	Modelled	Actual	Comment	Reference
A	-2	SER	-	expression tag	UNP Q5HCZ5
A	-1	ASN	-	expression tag	UNP Q5HCZ5
A	0	ALA	-	expression tag	UNP Q5HCZ5
B	-2	SER	-	expression tag	UNP Q5HCZ5
B	-1	ASN	-	expression tag	UNP Q5HCZ5
B	0	ALA	-	expression tag	UNP Q5HCZ5
C	-2	SER	-	expression tag	UNP Q5HCZ5
C	-1	ASN	-	expression tag	UNP Q5HCZ5
C	0	ALA	-	expression tag	UNP Q5HCZ5

- Molecule 2 is DI(HYDROXYETHYL)ETHER (three-letter code: PEG) (formula: C<sub>4</sub>H<sub>10</sub>O<sub>3</sub>).



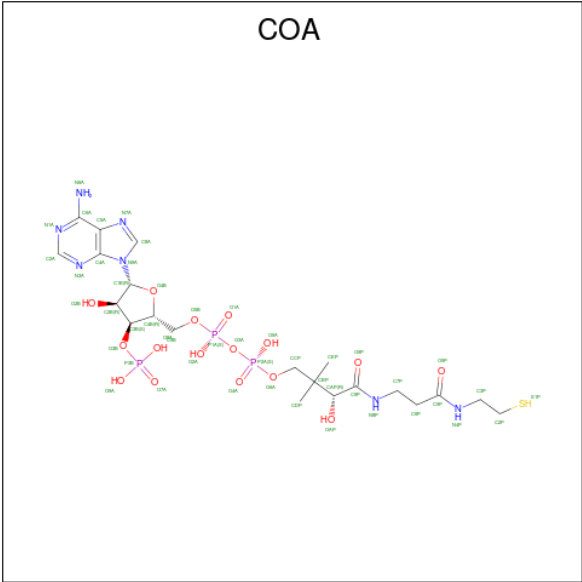
Mol	Chain	Residues	Atoms			ZeroOcc	AltConf
2	A	1	Total	C	O	0	0
			7	4	3		

- Molecule 3 is TRIETHYLENE GLYCOL (three-letter code: PGE) (formula:  $C_6H_{14}O_4$ ).



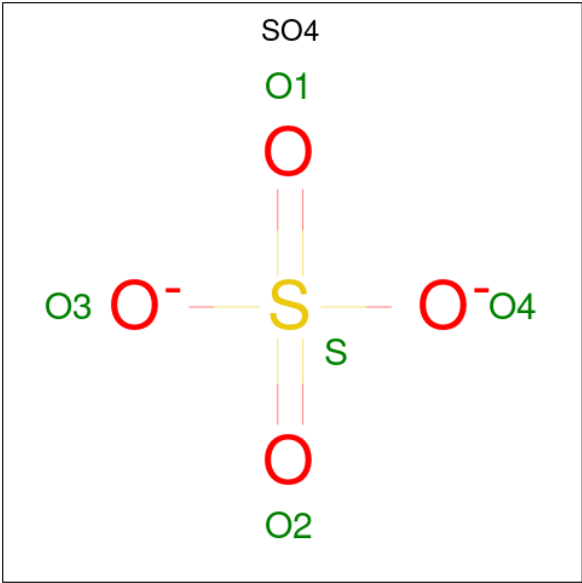
Mol	Chain	Residues	Atoms			ZeroOcc	AltConf
3	A	1	Total	C	O	0	0
			10	6	4		

- Molecule 4 is COENZYME A (three-letter code: COA) (formula:  $C_{21}H_{36}N_7O_{16}P_3S$ ).



Mol	Chain	Residues	Atoms					ZeroOcc	AltConf	
4	A	1	Total	C	N	O	P	S	0	0
			48	21	7	16	3	1		
4	B	1	Total	C	N	O	P	S	0	0
			48	21	7	16	3	1		
4	B	1	Total	C	N	O	P	S	0	0
			48	21	7	16	3	1		

- Molecule 5 is SULFATE ION (three-letter code: SO4) (formula: O<sub>4</sub>S).



Mol	Chain	Residues	Atoms			ZeroOcc	AltConf
5	A	1	Total	O	S	0	0
			5	4	1		

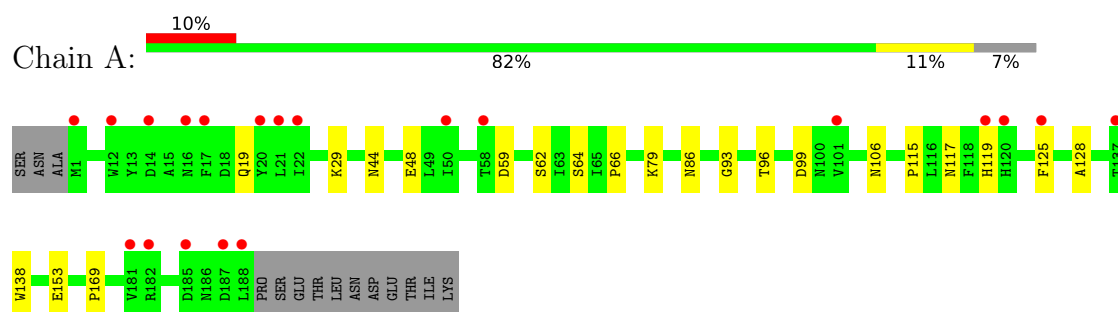
- Molecule 6 is water.

Mol	Chain	Residues	Atoms		ZeroOcc	AltConf
6	A	59	Total 59	O 59	0	0
6	B	73	Total 73	O 73	0	0
6	C	68	Total 68	O 68	0	0

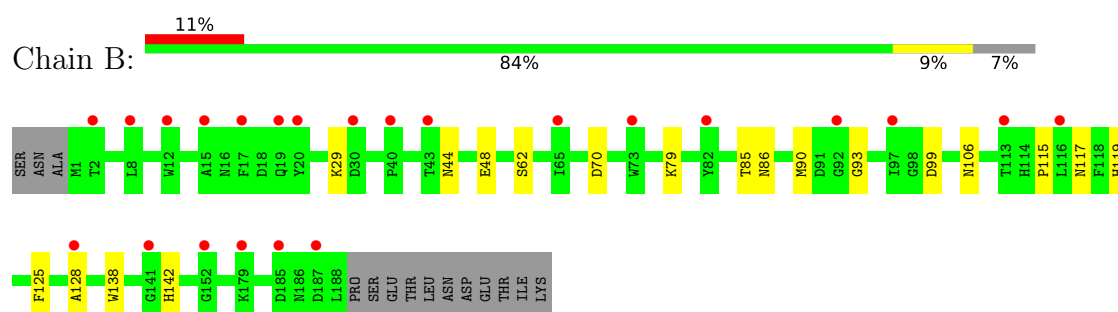
### 3 Residue-property plots [i](#)

These plots are drawn for all protein, RNA, DNA and oligosaccharide chains in the entry. The first graphic for a chain summarises the proportions of the various outlier classes displayed in the second graphic. The second graphic shows the sequence view annotated by issues in geometry and electron density. Residues are color-coded according to the number of geometric quality criteria for which they contain at least one outlier: green = 0, yellow = 1, orange = 2 and red = 3 or more. A red dot above a residue indicates a poor fit to the electron density ( $RSRZ > 2$ ). Stretches of 2 or more consecutive residues without any outlier are shown as a green connector. Residues present in the sample, but not in the model, are shown in grey.

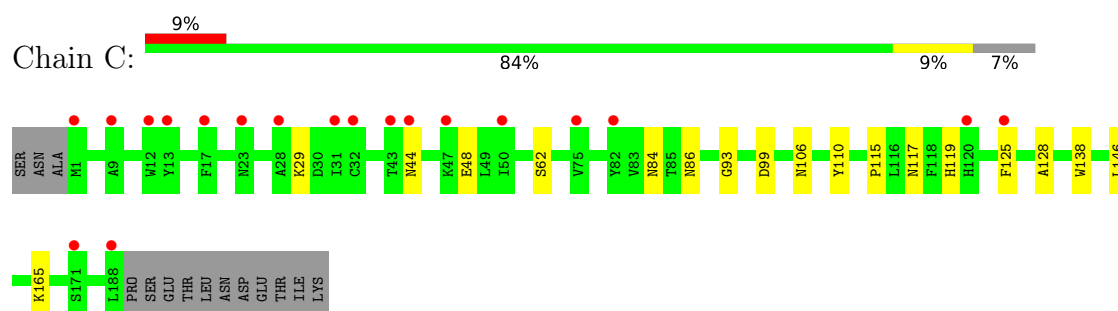
- Molecule 1: Galactoside O-acetyltransferase



- Molecule 1: Galactoside O-acetyltransferase



- Molecule 1: Galactoside O-acetyltransferase



## 4 Data and refinement statistics

Property	Value	Source
Space group	P 1	Depositor
Cell constants a, b, c, $\alpha$ , $\beta$ , $\gamma$	53.42Å 53.46Å 53.48Å 89.75° 89.78° 89.94°	Depositor
Resolution (Å)	50.00 – 1.95 37.89 – 1.95	Depositor EDS
% Data completeness (in resolution range)	92.2 (50.00-1.95) 91.6 (37.89-1.95)	Depositor EDS
$R_{merge}$	0.03	Depositor
$R_{sym}$	0.03	Depositor
$\langle I/\sigma(I) \rangle$ <sup>1</sup>	9.23 (at 1.95Å)	Xtriage
Refinement program	REFMAC 5.6.0117	Depositor
R, $R_{free}$	0.180 , 0.222 0.187 , 0.227	Depositor DCC
$R_{free}$ test set	2000 reflections (5.02%)	wwPDB-VP
Wilson B-factor (Å <sup>2</sup> )	25.9	Xtriage
Anisotropy	0.036	Xtriage
Bulk solvent $k_{sol}$ (e/Å <sup>3</sup> ), $B_{sol}$ (Å <sup>2</sup> )	0.35 , 50.9	EDS
L-test for twinning <sup>2</sup>	$\langle  L  \rangle = 0.41$ , $\langle L^2 \rangle = 0.23$	Xtriage

*Continued on next page...*

<sup>1</sup>Intensities estimated from amplitudes.

<sup>2</sup>Theoretical values of  $\langle |L| \rangle$ ,  $\langle L^2 \rangle$  for acentric reflections are 0.5, 0.333 respectively for untwinned datasets, and 0.375, 0.2 for perfectly twinned datasets.



*Continued from previous page...*

Property	Value	Source
Estimated twinning fraction	0.085 for h,l,-k	Xtriage
	0.085 for h,-l,k	
	0.108 for -l,k,h	
	0.108 for l,k,-h	
	0.116 for k,-h,l	
	0.116 for -k,h,l	
	0.420 for k,l,h	
	0.420 for l,h,k	
	0.077 for l,-h,-k	
	0.077 for -k,-l,h	
	0.095 for -l,-h,k	
	0.095 for -k,l,-h	
	0.087 for k,-l,-h	
	0.087 for -l,h,-k	
	0.078 for h,-k,-l	
	0.090 for -h,k,-l	
	0.078 for -h,-k,l	
	0.077 for k,h,-l	
	0.107 for -k,-h,-l	
	0.088 for l,-k,h	
	0.105 for -l,-k,-h	
	0.149 for -h,l,k	
	0.105 for -h,-l,-k	
$F_o, F_c$ correlation	0.94	EDS
Total number of atoms	4762	wwPDB-VP
Average B, all atoms ( $\text{\AA}^2$ )	34.0	wwPDB-VP

Xtriage's analysis on translational NCS is as follows: *The largest off-origin peak in the Patterson function is 5.49% of the height of the origin peak. No significant pseudotranslation is detected.*

## 5 Model quality

### 5.1 Standard geometry

Bond lengths and bond angles in the following residue types are not validated in this section: SO4, COA, PEG, PGE

The Z score for a bond length (or angle) is the number of standard deviations the observed value is removed from the expected value. A bond length (or angle) with  $|Z| > 5$  is considered an outlier worth inspection. RMSZ is the root-mean-square of all Z scores of the bond lengths (or angles).

Mol	Chain	Bond lengths		Bond angles	
		RMSZ	# Z  >5	RMSZ	# Z  >5
1	A	0.95	1/1513 (0.1%)	0.90	2/2055 (0.1%)
1	B	0.93	1/1499 (0.1%)	0.92	1/2037 (0.0%)
1	C	0.95	1/1498 (0.1%)	0.90	1/2036 (0.0%)
All	All	0.94	3/4510 (0.1%)	0.91	4/6128 (0.1%)

All (3) bond length outliers are listed below:

Mol	Chain	Res	Type	Atoms	Z	Observed(Å)	Ideal(Å)
1	B	138	TRP	CD2-CE2	7.11	1.49	1.41
1	C	138	TRP	CD2-CE2	5.62	1.48	1.41
1	A	138	TRP	CD2-CE2	5.58	1.48	1.41

All (4) bond angle outliers are listed below:

Mol	Chain	Res	Type	Atoms	Z	Observed(°)	Ideal(°)
1	C	99	ASP	CB-CG-OD1	5.57	123.32	118.30
1	B	99	ASP	CB-CG-OD1	5.36	123.12	118.30
1	A	59	ASP	CB-CG-OD1	5.01	122.81	118.30
1	A	99	ASP	CB-CG-OD1	5.00	122.80	118.30

There are no chirality outliers.

There are no planarity outliers.

### 5.2 Too-close contacts

In the following table, the Non-H and H(model) columns list the number of non-hydrogen atoms and hydrogen atoms in the chain respectively. The H(added) column lists the number of hydrogen atoms added and optimized by MolProbity. The Clashes column lists the number of clashes within the asymmetric unit, whereas Symm-Clashes lists symmetry-related clashes.

Mol	Chain	Non-H	H(model)	H(added)	Clashes	Symm-Clashes
1	A	1473	0	1416	12	0
1	B	1462	0	1403	8	0
1	C	1461	0	1399	11	0
2	A	7	0	10	1	0
3	A	10	0	14	3	0
4	A	48	0	32	2	0
4	B	96	0	64	2	0
5	A	5	0	0	1	0
6	A	59	0	0	1	0
6	B	73	0	0	1	0
6	C	68	0	0	1	0
All	All	4762	0	4338	35	0

The all-atom clashscore is defined as the number of clashes found per 1000 atoms (including hydrogen atoms). The all-atom clashscore for this structure is 4.

All (35) close contacts within the same asymmetric unit are listed below, sorted by their clash magnitude.

Atom-1	Atom-2	Interatomic distance (Å)	Clash overlap (Å)
1:A:66:PRO:HG2	1:A:86:ASN:OD1	1.59	1.01
1:A:19:GLN:H	1:A:19:GLN:CD	1.83	0.77
1:A:66:PRO:CG	1:A:86:ASN:OD1	2.37	0.68
1:B:106:ASN:ND2	6:B:213:HOH:O	2.32	0.59
1:A:64:SER:HB3	2:A:200:PEG:H21	1.85	0.57
1:C:86:ASN:ND2	1:C:106:ASN:OD1	2.39	0.56
1:C:106:ASN:ND2	6:C:214:HOH:O	2.33	0.56
5:A:203:SO4:O3	1:C:84:ASN:ND2	2.39	0.55
1:A:106:ASN:ND2	6:A:239:HOH:O	2.37	0.54
1:B:44:ASN:OD1	1:B:48:GLU:OE2	2.26	0.53
1:B:85:THR:O	1:B:86:ASN:HB2	2.08	0.53
1:A:44:ASN:OD1	1:A:48:GLU:OE2	2.28	0.51
1:C:44:ASN:OD1	1:C:48:GLU:OE2	2.28	0.51
4:A:202:COA:N8P	4:A:202:COA:CEP	2.74	0.50
3:A:201:PGE:H22	3:A:201:PGE:C5	2.43	0.48
1:C:146:LEU:HD23	1:C:146:LEU:N	2.29	0.48
1:B:93:GLY:N	1:B:128:ALA:HB1	2.28	0.48
4:B:201:COA:H133	4:B:201:COA:N7A	2.29	0.47
1:C:115:PRO:HD3	1:C:125:PHE:O	2.14	0.47
4:A:202:COA:N8P	4:A:202:COA:H142	2.30	0.47
1:A:115:PRO:HD3	1:A:125:PHE:O	2.16	0.46
1:B:142:HIS:ND1	1:C:110:TYR:OH	2.47	0.45
1:C:117:ASN:OD1	1:C:119:HIS:HB2	2.16	0.45

*Continued on next page...*

*Continued from previous page...*

Atom-1	Atom-2	Interatomic distance (Å)	Clash overlap (Å)
1:A:96:THR:CG2	3:A:201:PGE:H42	2.47	0.44
1:A:117:ASN:OD1	1:A:119:HIS:HB2	2.17	0.44
1:A:93:GLY:N	1:A:128:ALA:HB1	2.33	0.44
1:A:93:GLY:CA	1:A:128:ALA:HB1	2.48	0.44
1:B:115:PRO:HD3	1:B:125:PHE:O	2.19	0.43
1:B:117:ASN:OD1	1:B:119:HIS:HB2	2.18	0.43
1:C:93:GLY:CA	1:C:128:ALA:HB1	2.50	0.42
4:B:200:COA:O9A	1:C:165:LYS:NZ	2.33	0.42
3:A:201:PGE:H22	3:A:201:PGE:H52	2.02	0.42
1:A:153:GLU:HG2	1:A:169:PRO:HB3	2.01	0.41
1:B:70:ASP:OD2	1:B:90:MET:HG3	2.22	0.40
1:C:93:GLY:N	1:C:128:ALA:HB1	2.36	0.40

There are no symmetry-related clashes.

## 5.3 Torsion angles ⓘ

### 5.3.1 Protein backbone ⓘ

In the following table, the Percentiles column shows the percent Ramachandran outliers of the chain as a percentile score with respect to all X-ray entries followed by that with respect to entries of similar resolution.

The Analysed column shows the number of residues for which the backbone conformation was analysed, and the total number of residues.

Mol	Chain	Analysed	Favoured	Allowed	Outliers	Percentiles	
1	A	187/202 (93%)	183 (98%)	4 (2%)	0	100	100
1	B	186/202 (92%)	182 (98%)	4 (2%)	0	100	100
1	C	186/202 (92%)	183 (98%)	3 (2%)	0	100	100
All	All	559/606 (92%)	548 (98%)	11 (2%)	0	100	100

There are no Ramachandran outliers to report.

### 5.3.2 Protein sidechains ⓘ

In the following table, the Percentiles column shows the percent sidechain outliers of the chain as a percentile score with respect to all X-ray entries followed by that with respect to entries of similar resolution.

The Analysed column shows the number of residues for which the sidechain conformation was analysed, and the total number of residues.

Mol	Chain	Analysed	Rotameric	Outliers	Percentiles	
1	A	159/173 (92%)	156 (98%)	3 (2%)	57	50
1	B	156/173 (90%)	153 (98%)	3 (2%)	57	50
1	C	156/173 (90%)	154 (99%)	2 (1%)	69	65
All	All	471/519 (91%)	463 (98%)	8 (2%)	60	55

All (8) residues with a non-rotameric sidechain are listed below:

Mol	Chain	Res	Type
1	A	29	LYS
1	A	62	SER
1	A	79	LYS
1	B	29	LYS
1	B	62	SER
1	B	79	LYS
1	C	29	LYS
1	C	62	SER

Sometimes sidechains can be flipped to improve hydrogen bonding and reduce clashes. There are no such sidechains identified.

### 5.3.3 RNA [i](#)

There are no RNA molecules in this entry.

## 5.4 Non-standard residues in protein, DNA, RNA chains [i](#)

There are no non-standard protein/DNA/RNA residues in this entry.

## 5.5 Carbohydrates [i](#)

There are no monosaccharides in this entry.

## 5.6 Ligand geometry [i](#)

6 ligands are modelled in this entry.

In the following table, the Counts columns list the number of bonds (or angles) for which Mogul statistics could be retrieved, the number of bonds (or angles) that are observed in the model and the number of bonds (or angles) that are defined in the Chemical Component Dictionary. The Link column lists molecule types, if any, to which the group is linked. The Z score for a bond length (or angle) is the number of standard deviations the observed value is removed from the expected value. A bond length (or angle) with  $|Z| > 2$  is considered an outlier worth inspection. RMSZ is the root-mean-square of all Z scores of the bond lengths (or angles).

Mol	Type	Chain	Res	Link	Bond lengths			Bond angles		
					Counts	RMSZ	# $ Z  > 2$	Counts	RMSZ	# $ Z  > 2$
2	PEG	A	200	-	6,6,6	0.48	0	5,5,5	0.26	0
5	SO4	A	203	-	4,4,4	0.32	0	6,6,6	0.48	0
3	PGE	A	201	-	9,9,9	0.77	0	8,8,8	1.14	0
4	COA	B	200	-	41,50,50	1.02	4 (9%)	52,75,75	1.96	14 (26%)
4	COA	B	201	-	41,50,50	1.05	3 (7%)	52,75,75	1.92	10 (19%)
4	COA	A	202	-	41,50,50	0.91	2 (4%)	52,75,75	1.77	15 (28%)

In the following table, the Chirals column lists the number of chiral outliers, the number of chiral centers analysed, the number of these observed in the model and the number defined in the Chemical Component Dictionary. Similar counts are reported in the Torsion and Rings columns. '-' means no outliers of that kind were identified.

Mol	Type	Chain	Res	Link	Chirals	Torsions	Rings
2	PEG	A	200	-	-	4/4/4/4	-
3	PGE	A	201	-	-	4/7/7/7	-
4	COA	B	200	-	-	16/44/64/64	0/3/3/3
4	COA	B	201	-	-	16/44/64/64	0/3/3/3
4	COA	A	202	-	-	13/44/64/64	0/3/3/3

All (9) bond length outliers are listed below:

Mol	Chain	Res	Type	Atoms	Z	Observed(Å)	Ideal(Å)
4	B	201	COA	OAP-CAP	3.26	1.48	1.42
4	A	202	COA	OAP-CAP	2.77	1.47	1.42
4	B	200	COA	C5A-C4A	2.55	1.47	1.40
4	B	200	COA	C2A-N3A	2.52	1.36	1.32
4	B	201	COA	C2A-N3A	2.41	1.36	1.32
4	B	200	COA	OAP-CAP	2.35	1.46	1.42
4	B	201	COA	P3B-O3B	2.22	1.63	1.59
4	A	202	COA	C5A-C4A	2.11	1.46	1.40
4	B	200	COA	P3B-O3B	2.05	1.63	1.59

All (39) bond angle outliers are listed below:

Mol	Chain	Res	Type	Atoms	Z	Observed(°)	Ideal(°)
4	B	200	COA	C7P-C6P-C5P	-7.50	99.87	112.36
4	B	201	COA	C7P-C6P-C5P	-5.46	103.26	112.36
4	A	202	COA	N3A-C2A-N1A	-4.72	121.30	128.68
4	B	200	COA	N6A-C6A-N1A	4.24	127.37	118.57
4	B	201	COA	P2A-O3A-P1A	-4.24	118.29	132.83
4	B	201	COA	OAP-CAP-CBP	3.91	119.46	110.25
4	B	201	COA	N3A-C2A-N1A	-3.90	122.58	128.68
4	B	200	COA	N3A-C2A-N1A	-3.83	122.69	128.68
4	A	202	COA	C7P-C6P-C5P	-3.80	106.02	112.36
4	B	201	COA	CAP-C9P-N8P	-3.63	109.35	116.58
4	B	201	COA	C1B-N9A-C4A	-3.43	120.61	126.64
4	B	201	COA	N6A-C6A-N1A	3.42	125.67	118.57
4	A	202	COA	CAP-C9P-N8P	-3.35	109.90	116.58
4	B	200	COA	C5A-C6A-N6A	-3.32	115.30	120.35
4	B	201	COA	C5A-C6A-N6A	-3.25	115.41	120.35
4	A	202	COA	C1B-N9A-C4A	-3.15	121.11	126.64
4	A	202	COA	P2A-O3A-P1A	-3.11	122.14	132.83
4	B	200	COA	P2A-O3A-P1A	-3.03	122.42	132.83
4	B	201	COA	C3P-N4P-C5P	-2.97	117.33	122.84
4	B	200	COA	C3P-N4P-C5P	-2.95	117.36	122.84
4	A	202	COA	OAP-CAP-CBP	2.89	117.06	110.25
4	A	202	COA	O6A-CCP-CBP	-2.79	106.05	110.55
4	B	200	COA	OAP-CAP-CBP	2.78	116.79	110.25
4	A	202	COA	C2A-N1A-C6A	2.76	123.48	118.75
4	B	200	COA	C7P-N8P-C9P	-2.62	117.91	122.59
4	A	202	COA	C3P-N4P-C5P	-2.51	118.18	122.84
4	A	202	COA	N6A-C6A-N1A	2.47	123.71	118.57
4	A	202	COA	O5P-C5P-C6P	-2.47	117.51	122.02
4	B	200	COA	OAP-CAP-C9P	-2.44	97.68	109.42
4	B	201	COA	OAP-CAP-C9P	-2.38	97.96	109.42
4	A	202	COA	C2B-C3B-C4B	2.34	107.37	103.22
4	B	200	COA	C2A-N1A-C6A	2.32	122.73	118.75
4	B	200	COA	O9A-P3B-O8A	2.28	116.36	107.64
4	A	202	COA	OAP-CAP-C9P	-2.28	98.44	109.42
4	B	200	COA	C1B-N9A-C4A	-2.26	122.67	126.64
4	B	200	COA	C2B-C3B-C4B	2.12	106.98	103.22
4	A	202	COA	C6P-C5P-N4P	2.10	119.95	116.42
4	B	200	COA	O2B-C2B-C3B	2.06	117.00	111.17
4	A	202	COA	O5A-P2A-O4A	2.01	122.19	112.24

There are no chirality outliers.

All (53) torsion outliers are listed below:

Mol	Chain	Res	Type	Atoms
4	A	202	COA	O4B-C4B-C5B-O5B
4	A	202	COA	C5B-O5B-P1A-O3A
4	A	202	COA	CCP-O6A-P2A-O4A
4	A	202	COA	CCP-O6A-P2A-O5A
4	A	202	COA	CEP-CBP-CCP-O6A
4	A	202	COA	CAP-CBP-CCP-O6A
4	A	202	COA	N8P-C9P-CAP-OAP
4	A	202	COA	C5P-C6P-C7P-N8P
4	B	200	COA	C5B-O5B-P1A-O1A
4	B	200	COA	OAP-CAP-CBP-CCP
4	B	200	COA	C9P-CAP-CBP-CCP
4	B	200	COA	OAP-CAP-CBP-CDP
4	B	200	COA	C9P-CAP-CBP-CDP
4	B	200	COA	OAP-CAP-CBP-CEP
4	B	200	COA	C9P-CAP-CBP-CEP
4	B	200	COA	C5P-C6P-C7P-N8P
4	B	201	COA	C5B-O5B-P1A-O1A
4	B	201	COA	C5B-O5B-P1A-O2A
4	B	201	COA	OAP-CAP-CBP-CCP
4	B	201	COA	C9P-CAP-CBP-CCP
4	B	201	COA	C9P-CAP-CBP-CDP
4	B	201	COA	OAP-CAP-CBP-CEP
4	B	201	COA	C9P-CAP-CBP-CEP
4	B	201	COA	C5P-C6P-C7P-N8P
3	A	201	PGE	O1-C1-C2-O2
3	A	201	PGE	C3-C4-O3-C5
4	A	202	COA	C3B-C4B-C5B-O5B
2	A	200	PEG	O1-C1-C2-O2
3	A	201	PGE	O3-C5-C6-O4
4	B	200	COA	O4B-C4B-C5B-O5B
4	A	202	COA	CDP-CBP-CCP-O6A
4	B	200	COA	C4B-C3B-O3B-P3B
4	A	202	COA	O9P-C9P-CAP-OAP
4	B	201	COA	OAP-CAP-CBP-CDP
2	A	200	PEG	O2-C3-C4-O4
4	B	201	COA	C4B-C3B-O3B-P3B
2	A	200	PEG	C1-C2-O2-C3
3	A	201	PGE	C6-C5-O3-C4
4	B	200	COA	CCP-O6A-P2A-O3A
4	A	202	COA	C5B-O5B-P1A-O2A
4	B	200	COA	C3B-C4B-C5B-O5B
4	B	200	COA	C6P-C7P-N8P-C9P
4	B	201	COA	CDP-CBP-CCP-O6A

*Continued on next page...*



*Continued from previous page...*

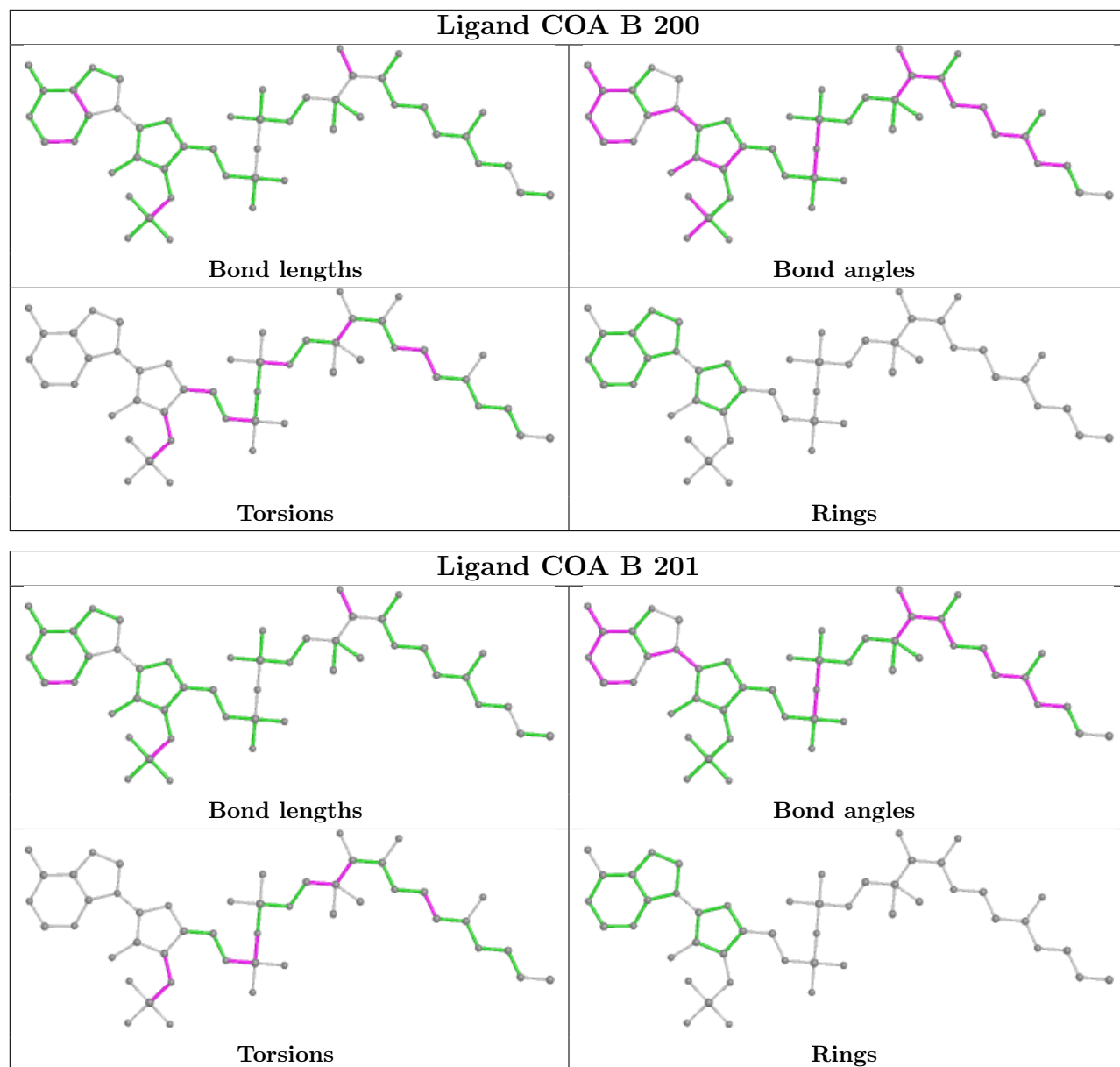
Mol	Chain	Res	Type	Atoms
2	A	200	PEG	C4-C3-O2-C2
4	B	200	COA	C3B-O3B-P3B-O7A
4	B	201	COA	C3B-O3B-P3B-O7A
4	B	200	COA	C2B-C3B-O3B-P3B
4	A	202	COA	CCP-O6A-P2A-O3A
4	B	200	COA	C5B-O5B-P1A-O3A
4	B	201	COA	C5B-O5B-P1A-O3A
4	B	201	COA	P2A-O3A-P1A-O2A
4	B	201	COA	C2B-C3B-O3B-P3B
4	B	201	COA	CEP-CBP-CCP-O6A

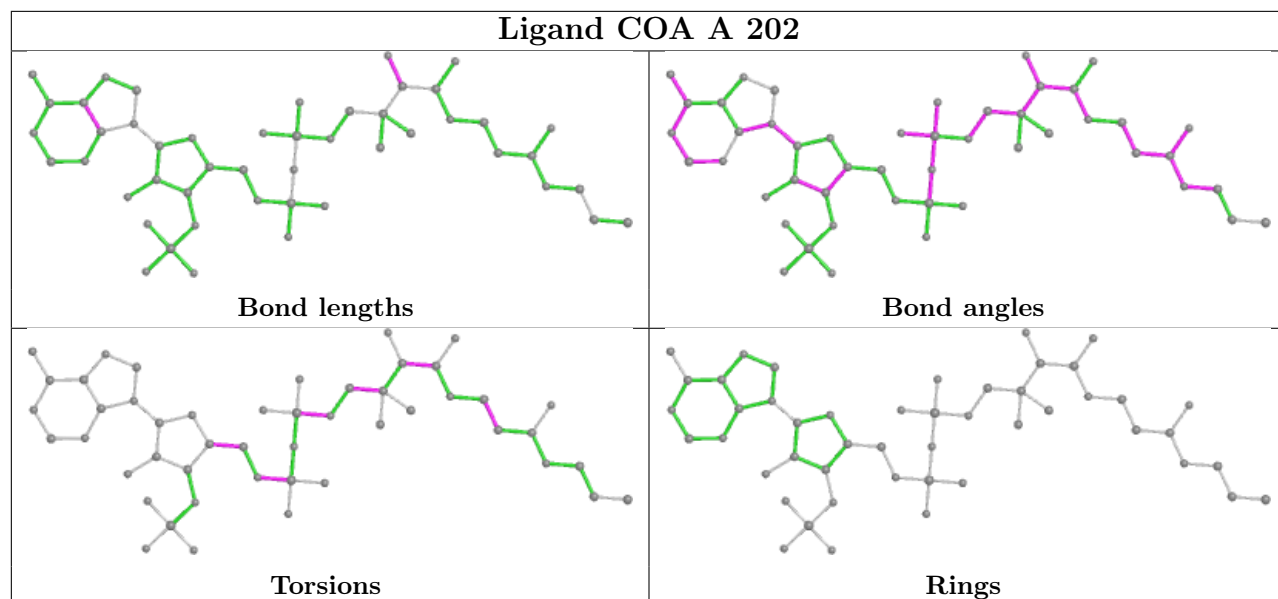
There are no ring outliers.

6 monomers are involved in 9 short contacts:

Mol	Chain	Res	Type	Clashes	Symm-Clashes
2	A	200	PEG	1	0
5	A	203	SO4	1	0
3	A	201	PGE	3	0
4	B	200	COA	1	0
4	B	201	COA	1	0
4	A	202	COA	2	0

The following is a two-dimensional graphical depiction of Mogul quality analysis of bond lengths, bond angles, torsion angles, and ring geometry for all instances of the Ligand of Interest. In addition, ligands with molecular weight > 250 and outliers as shown on the validation Tables will also be included. For torsion angles, if less than 5% of the Mogul distribution of torsion angles is within 10 degrees of the torsion angle in question, then that torsion angle is considered an outlier. Any bond that is central to one or more torsion angles identified as an outlier by Mogul will be highlighted in the graph. For rings, the root-mean-square deviation (RMSD) between the ring in question and similar rings identified by Mogul is calculated over all ring torsion angles. If the average RMSD is greater than 60 degrees and the minimal RMSD between the ring in question and any Mogul-identified rings is also greater than 60 degrees, then that ring is considered an outlier. The outliers are highlighted in purple. The color gray indicates Mogul did not find sufficient equivalents in the CSD to analyse the geometry.





## 5.7 Other polymers [i](#)

There are no such residues in this entry.

## 5.8 Polymer linkage issues [i](#)

There are no chain breaks in this entry.

## 6 Fit of model and data ⓘ

### 6.1 Protein, DNA and RNA chains ⓘ

In the following table, the column labelled ‘#RSRZ > 2’ contains the number (and percentage) of RSRZ outliers, followed by percent RSRZ outliers for the chain as percentile scores relative to all X-ray entries and entries of similar resolution. The OWAB column contains the minimum, median, 95<sup>th</sup> percentile and maximum values of the occupancy-weighted average B-factor per residue. The column labelled ‘Q < 0.9’ lists the number of (and percentage) of residues with an average occupancy less than 0.9.

Mol	Chain	Analysed	<RSRZ>	#RSRZ>2	OWAB(Å <sup>2</sup> )	Q<0.9
1	A	188/202 (93%)	0.99	20 (10%) 6 10	22, 31, 48, 73	1 (0%)
1	B	188/202 (93%)	1.04	23 (12%) 4 6	22, 31, 45, 63	1 (0%)
1	C	188/202 (93%)	0.98	19 (10%) 7 11	21, 31, 45, 66	1 (0%)
All	All	564/606 (93%)	1.00	62 (10%) 5 9	21, 31, 46, 73	3 (0%)

All (62) RSRZ outliers are listed below:

Mol	Chain	Res	Type	RSRZ
1	C	12	TRP	4.8
1	A	17	PHE	4.6
1	B	15	ALA	4.6
1	C	31	ILE	4.4
1	A	187	ASP	4.2
1	B	116	LEU	4.2
1	C	1	MET	3.8
1	B	8	LEU	3.6
1	A	120	HIS	3.5
1	A	185	ASP	3.4
1	C	17	PHE	3.4
1	C	125	PHE	3.3
1	A	125	PHE	3.3
1	C	9	ALA	3.2
1	B	82	TYR	3.1
1	A	21	LEU	3.1
1	B	43	THR	3.1
1	C	23	ASN	3.1
1	B	40	PRO	3.0
1	B	65	ILE	3.0
1	B	97	ILE	3.0
1	B	19	GLN	3.0
1	B	92	GLY	3.0

*Continued on next page...*

*Continued from previous page...*

Mol	Chain	Res	Type	RSRZ
1	C	13	TYR	3.0
1	B	73	TRP	2.9
1	B	152	GLY	2.9
1	A	16	ASN	2.8
1	A	188	LEU	2.8
1	C	47	LYS	2.8
1	B	30	ASP	2.8
1	B	2	THR	2.8
1	C	44	ASN	2.8
1	C	188	LEU	2.7
1	B	141	GLY	2.7
1	B	17	PHE	2.6
1	A	137	THR	2.6
1	A	1	MET	2.6
1	C	171	SER	2.5
1	A	58	THR	2.4
1	B	20	TYR	2.4
1	C	50	ILE	2.4
1	B	113	THR	2.4
1	A	181	VAL	2.4
1	B	128	ALA	2.4
1	B	179	LYS	2.3
1	A	12	TRP	2.3
1	B	187	ASP	2.2
1	C	32	CYS	2.2
1	A	119	HIS	2.2
1	A	182	ARG	2.2
1	C	43	THR	2.2
1	C	82	TYR	2.2
1	A	101	VAL	2.2
1	A	50	ILE	2.1
1	B	12	TRP	2.1
1	A	22	ILE	2.1
1	B	185	ASP	2.1
1	C	120	HIS	2.1
1	A	14	ASP	2.0
1	A	20	TYR	2.0
1	C	75	VAL	2.0
1	C	28	ALA	2.0

## 6.2 Non-standard residues in protein, DNA, RNA chains [i](#)

There are no non-standard protein/DNA/RNA residues in this entry.

## 6.3 Carbohydrates [i](#)

There are no monosaccharides in this entry.

## 6.4 Ligands [i](#)

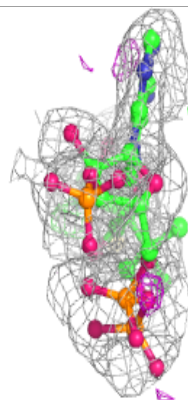
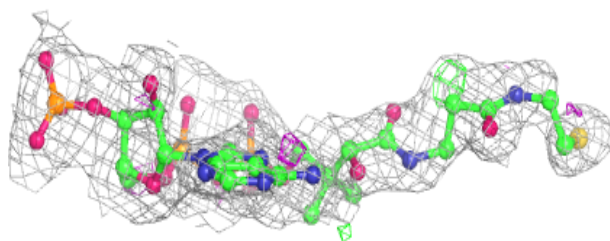
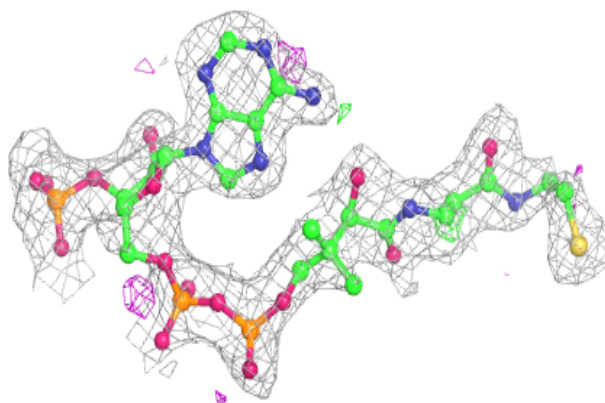
In the following table, the Atoms column lists the number of modelled atoms in the group and the number defined in the chemical component dictionary. The B-factors column lists the minimum, median, 95<sup>th</sup> percentile and maximum values of B factors of atoms in the group. The column labelled 'Q< 0.9' lists the number of atoms with occupancy less than 0.9.

Mol	Type	Chain	Res	Atoms	RSCC	RSR	B-factors( $\text{\AA}^2$ )	Q<0.9
3	PGE	A	201	10/10	0.74	0.18	35,49,57,58	0
4	COA	B	200	48/48	0.76	0.21	27,51,72,77	0
2	PEG	A	200	7/7	0.77	0.21	40,47,49,50	0
4	COA	B	201	48/48	0.78	0.19	27,48,77,84	0
4	COA	A	202	48/48	0.81	0.19	26,50,76,88	0
5	SO4	A	203	5/5	0.81	0.26	59,70,74,79	0

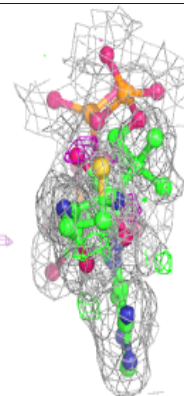
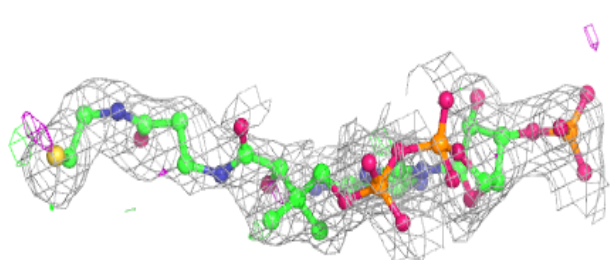
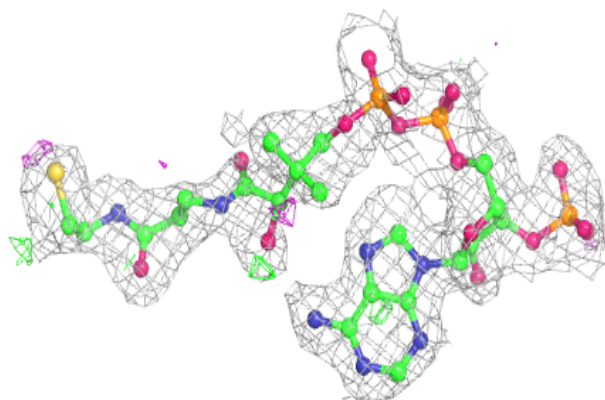
The following is a graphical depiction of the model fit to experimental electron density of all instances of the Ligand of Interest. In addition, ligands with molecular weight > 250 and outliers as shown on the geometry validation Tables will also be included. Each fit is shown from different orientation to approximate a three-dimensional view.

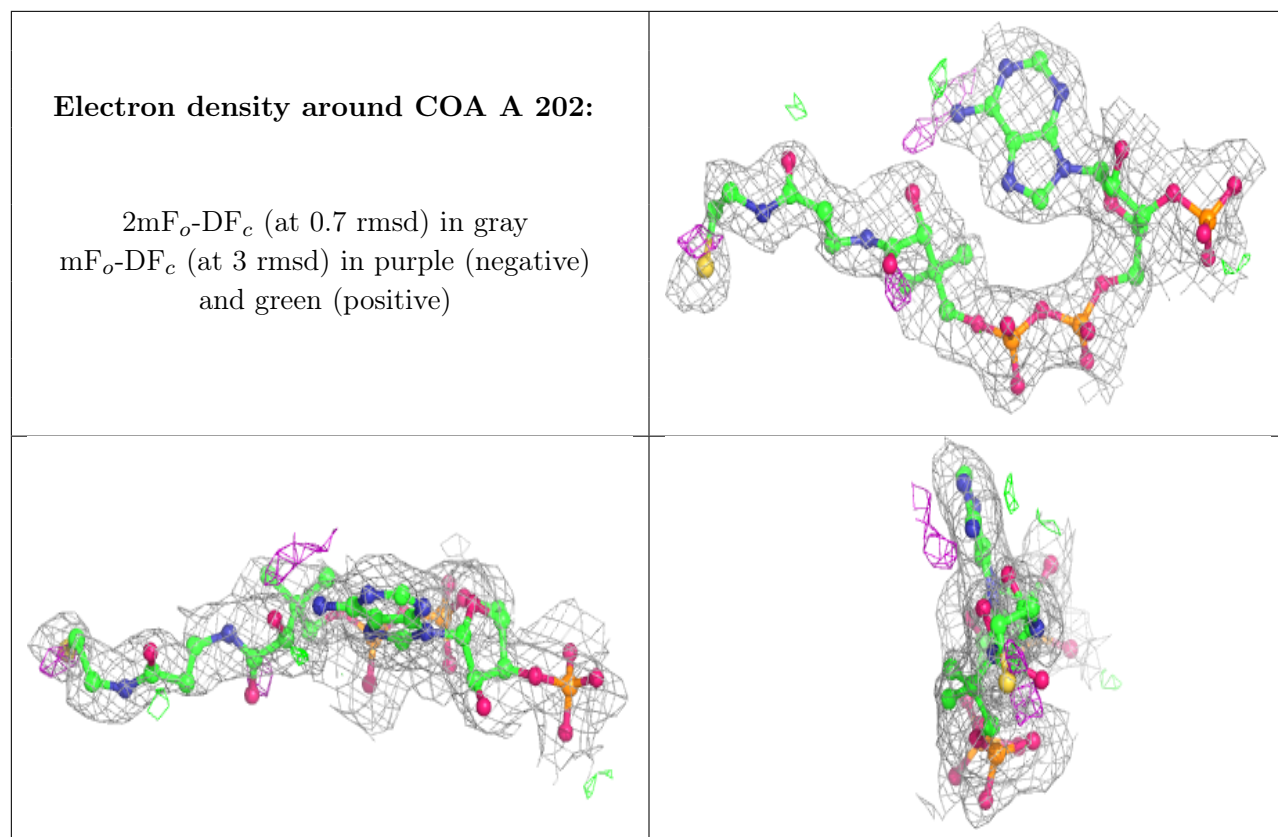
**Electron density around COA B 200:**

$2mF_o-DF_c$  (at 0.7 rmsd) in gray  
 $mF_o-DF_c$  (at 3 rmsd) in purple (negative)  
and green (positive)

**Electron density around COA B 201:**

$2mF_o-DF_c$  (at 0.7 rmsd) in gray  
 $mF_o-DF_c$  (at 3 rmsd) in purple (negative)  
and green (positive)





## 6.5 Other polymers [i](#)

There are no such residues in this entry.