



Full wwPDB X-ray Structure Validation Report ⓘ

May 23, 2020 – 03:05 am BST

PDB ID : 3V5J
Title : Crystal Structure of Interleukin-2 Inducible T-cell Kinase Itk Catalytic Domain with Thienopyrazolyindole Inhibitor 090
Authors : McLean, L.R.; Zhang, Y.
Deposited on : 2011-12-16
Resolution : 2.59 Å(reported)

This is a Full wwPDB X-ray Structure Validation Report for a publicly released PDB entry.

We welcome your comments at validation@mail.wwpdb.org

A user guide is available at

<https://www.wwpdb.org/validation/2017/XrayValidationReportHelp>

with specific help available everywhere you see the ⓘ symbol.

The following versions of software and data (see [references ⓘ](#)) were used in the production of this report:

MolProbity : 4.02b-467
Mogul : 1.8.5 (274361), CSD as541be (2020)
Xtriage (Phenix) : 1.13
EDS : 2.11
buster-report : 1.1.7 (2018)
Percentile statistics : 20191225.v01 (using entries in the PDB archive December 25th 2019)
Refmac : 5.8.0158
CCP4 : 7.0.044 (Gargrove)
Ideal geometry (proteins) : Engh & Huber (2001)
Ideal geometry (DNA, RNA) : Parkinson et al. (1996)
Validation Pipeline (wwPDB-VP) : 2.11

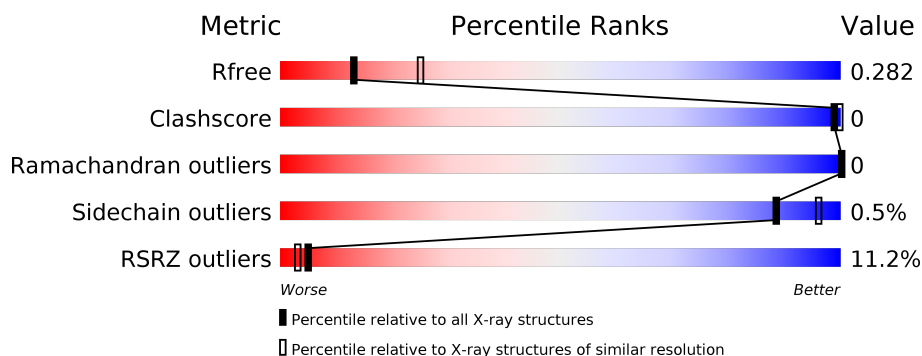
1 Overall quality at a glance

The following experimental techniques were used to determine the structure:

X-RAY DIFFRACTION

The reported resolution of this entry is 2.59 Å.

Percentile scores (ranging between 0-100) for global validation metrics of the entry are shown in the following graphic. The table shows the number of entries on which the scores are based.



Metric	Whole archive (#Entries)	Similar resolution (#Entries, resolution range(Å))
R_{free}	130704	3163 (2.60-2.60)
Clashscore	141614	3518 (2.60-2.60)
Ramachandran outliers	138981	3455 (2.60-2.60)
Sidechain outliers	138945	3455 (2.60-2.60)
RSRZ outliers	127900	3104 (2.60-2.60)

The table below summarises the geometric issues observed across the polymeric chains and their fit to the electron density. The red, orange, yellow and green segments on the lower bar indicate the fraction of residues that contain outliers for ≥ 3 , 2, 1 and 0 types of geometric quality criteria respectively. A grey segment represents the fraction of residues that are not modelled. The numeric value for each fraction is indicated below the corresponding segment, with a dot representing fractions $\leq 5\%$. The upper red bar (where present) indicates the fraction of residues that have poor fit to the electron density. The numeric value is given above the bar.

Mol	Chain	Length	Quality of chain
1	A	266	<div> <div>8%</div> <div> <div></div> <div>89%</div> <div>9%</div> </div> </div>
1	B	266	<div> <div>12%</div> <div> <div></div> <div>89%</div> <div>9%</div> </div> </div>

2 Entry composition [i](#)

There are 4 unique types of molecules in this entry. The entry contains 3807 atoms, of which 0 are hydrogens and 0 are deuteriums.

In the tables below, the ZeroOcc column contains the number of atoms modelled with zero occupancy, the AltConf column contains the number of residues with at least one atom in alternate conformation and the Trace column contains the number of residues modelled with at most 2 atoms.

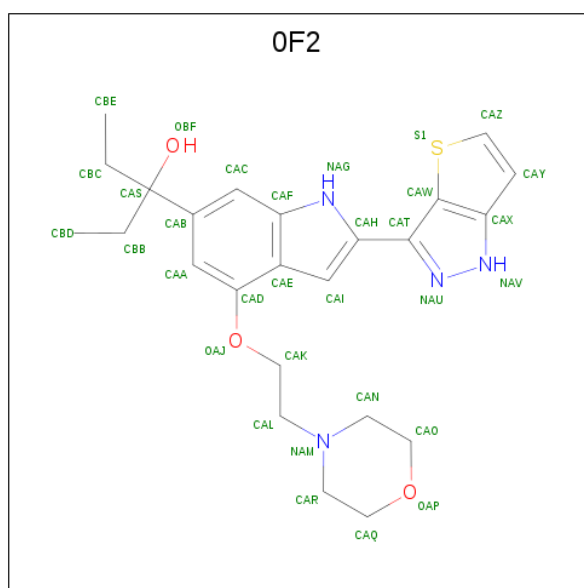
- Molecule 1 is a protein called Tyrosine-protein kinase ITK/TSK.

Mol	Chain	Residues	Atoms					ZeroOcc	AltConf	Trace
1	A	241	Total	C	N	O	S	0	0	0
			1836	1179	307	335	15			
1	B	241	Total	C	N	O	S	0	0	0
			1843	1185	302	341	15			

There are 4 discrepancies between the modelled and reference sequences:

Chain	Residue	Modelled	Actual	Comment	Reference
A	355	GLY	-	expression tag	UNP Q08881
A	356	SER	-	expression tag	UNP Q08881
B	355	GLY	-	expression tag	UNP Q08881
B	356	SER	-	expression tag	UNP Q08881

- Molecule 2 is 3-[4-(2-morpholin-4-ylethoxy)-2-(1 {H}-thieno[3,2-c]pyrazol-3-yl)-1 {H}-indol-6-yl]pentan-3-ol (three-letter code: 0F2) (formula: C₂₄H₃₀N₄O₃S).



Mol	Chain	Residues	Atoms					ZeroOcc	AltConf
2	A	1	Total	C	N	O	S	0	0
			32	24	4	3	1		
2	B	1	Total	C	N	O	S	0	0
			32	24	4	3	1		

- Molecule 3 is SULFATE ION (three-letter code: SO4) (formula: O₄S).



Mol	Chain	Residues	Atoms			ZeroOcc	AltConf
3	A	1	Total	O	S	0	0
			5	4	1		
3	B	1	Total	O	S	0	0
			5	4	1		

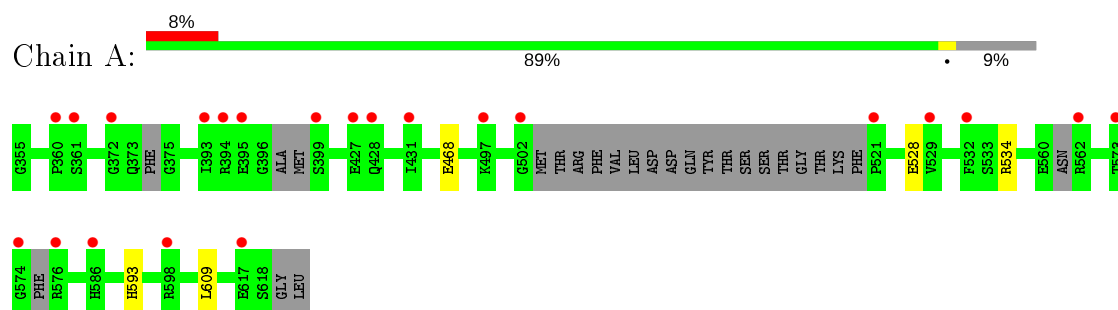
- Molecule 4 is water.

Mol	Chain	Residues	Atoms		ZeroOcc	AltConf
4	A	27	Total	O	0	0
			27	27		
4	B	27	Total	O	0	0
			27	27		

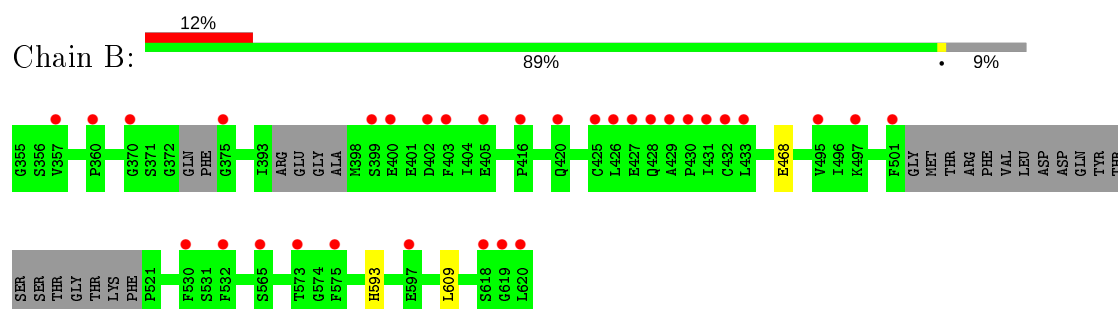
3 Residue-property plots [i](#)

These plots are drawn for all protein, RNA and DNA chains in the entry. The first graphic for a chain summarises the proportions of the various outlier classes displayed in the second graphic. The second graphic shows the sequence view annotated by issues in geometry and electron density. Residues are color-coded according to the number of geometric quality criteria for which they contain at least one outlier: green = 0, yellow = 1, orange = 2 and red = 3 or more. A red dot above a residue indicates a poor fit to the electron density ($RSRZ > 2$). Stretches of 2 or more consecutive residues without any outlier are shown as a green connector. Residues present in the sample, but not in the model, are shown in grey.

- Molecule 1: Tyrosine-protein kinase ITK/TSK



- Molecule 1: Tyrosine-protein kinase ITK/TSK



4 Data and refinement statistics

Property	Value	Source
Space group	C 1 2 1	Depositor
Cell constants a, b, c, α , β , γ	146.13Å 69.51Å 68.24Å 90.00° 107.33° 90.00°	Depositor
Resolution (Å)	38.65 – 2.59 38.65 – 2.59	Depositor EDS
% Data completeness (in resolution range)	99.0 (38.65-2.59) 99.0 (38.65-2.59)	Depositor EDS
R_{merge}	0.12	Depositor
R_{sym}	(Not available)	Depositor
$\langle I/\sigma(I) \rangle$ ¹	2.17 (at 2.58Å)	Xtriage
Refinement program	BUSTER-TNT BUSTER 2.9.1, BUSTER 2.9.1	Depositor
R, R_{free}	0.245 , 0.270 0.253 , 0.282	Depositor DCC
R_{free} test set	1039 reflections (5.12%)	wwPDB-VP
Wilson B-factor (Å ²)	44.4	Xtriage
Anisotropy	0.451	Xtriage
Bulk solvent k_{sol} (e/Å ³), B_{sol} (Å ²)	0.35 , 52.9	EDS
L-test for twinning ²	$\langle L \rangle = 0.50$, $\langle L^2 \rangle = 0.33$	Xtriage
Estimated twinning fraction	No twinning to report.	Xtriage
F_o, F_c correlation	0.91	EDS
Total number of atoms	3807	wwPDB-VP
Average B, all atoms (Å ²)	48.0	wwPDB-VP

Xtriage's analysis on translational NCS is as follows: *The largest off-origin peak in the Patterson function is 5.53% of the height of the origin peak. No significant pseudotranslation is detected.*

¹Intensities estimated from amplitudes.

²Theoretical values of $\langle |L| \rangle$, $\langle L^2 \rangle$ for acentric reflections are 0.5, 0.333 respectively for untwinned datasets, and 0.375, 0.2 for perfectly twinned datasets.

5 Model quality

5.1 Standard geometry

Bond lengths and bond angles in the following residue types are not validated in this section: 0F2, SO4

The Z score for a bond length (or angle) is the number of standard deviations the observed value is removed from the expected value. A bond length (or angle) with $|Z| > 5$ is considered an outlier worth inspection. RMSZ is the root-mean-square of all Z scores of the bond lengths (or angles).

Mol	Chain	Bond lengths		Bond angles	
		RMSZ	$\# Z > 5$	RMSZ	$\# Z > 5$
1	A	0.37	0/1874	0.56	0/2535
1	B	0.37	0/1884	0.55	0/2552
All	All	0.37	0/3758	0.56	0/5087

There are no bond length outliers.

There are no bond angle outliers.

There are no chirality outliers.

There are no planarity outliers.

5.2 Too-close contacts

In the following table, the Non-H and H(model) columns list the number of non-hydrogen atoms and hydrogen atoms in the chain respectively. The H(added) column lists the number of hydrogen atoms added and optimized by MolProbity. The Clashes column lists the number of clashes within the asymmetric unit, whereas Symm-Clashes lists symmetry related clashes.

Mol	Chain	Non-H	H(model)	H(added)	Clashes	Symm-Clashes
1	A	1836	0	1729	2	0
1	B	1843	0	1742	1	0
2	A	32	0	30	0	0
2	B	32	0	30	0	0
3	A	5	0	0	0	0
3	B	5	0	0	0	0
4	A	27	0	0	0	0
4	B	27	0	0	0	0
All	All	3807	0	3531	3	0

The all-atom clashscore is defined as the number of clashes found per 1000 atoms (including hydrogen atoms). The all-atom clashscore for this structure is 0.

All (3) close contacts within the same asymmetric unit are listed below, sorted by their clash magnitude.

Atom-1	Atom-2	Interatomic distance (Å)	Clash overlap (Å)
1:B:468:GLU:HG3	1:B:609:LEU:HD11	1.89	0.55
1:A:468:GLU:HG3	1:A:609:LEU:HD11	1.98	0.46
1:A:528:GLU:HB3	1:A:534:ARG:HB2	2.00	0.43

There are no symmetry-related clashes.

5.3 Torsion angles [i](#)

5.3.1 Protein backbone [i](#)

In the following table, the Percentiles column shows the percent Ramachandran outliers of the chain as a percentile score with respect to all X-ray entries followed by that with respect to entries of similar resolution.

The Analysed column shows the number of residues for which the backbone conformation was analysed, and the total number of residues.

Mol	Chain	Analysed	Favoured	Allowed	Outliers	Percentiles	
1	A	229/266 (86%)	224 (98%)	5 (2%)	0	100	100
1	B	233/266 (88%)	229 (98%)	4 (2%)	0	100	100
All	All	462/532 (87%)	453 (98%)	9 (2%)	0	100	100

There are no Ramachandran outliers to report.

5.3.2 Protein sidechains [i](#)

In the following table, the Percentiles column shows the percent sidechain outliers of the chain as a percentile score with respect to all X-ray entries followed by that with respect to entries of similar resolution.

The Analysed column shows the number of residues for which the sidechain conformation was analysed, and the total number of residues.

Mol	Chain	Analysed	Rotameric	Outliers	Percentiles	
1	A	185/233 (79%)	184 (100%)	1 (0%)	88	96
1	B	190/233 (82%)	189 (100%)	1 (0%)	88	96
All	All	375/466 (80%)	373 (100%)	2 (0%)	88	96

All (2) residues with a non-rotameric sidechain are listed below:

Mol	Chain	Res	Type
1	A	593	HIS
1	B	593	HIS

Some sidechains can be flipped to improve hydrogen bonding and reduce clashes. All (2) such sidechains are listed below:

Mol	Chain	Res	Type
1	A	592	ASN
1	B	592	ASN

5.3.3 RNA ⓘ

There are no RNA molecules in this entry.

5.4 Non-standard residues in protein, DNA, RNA chains ⓘ

There are no non-standard protein/DNA/RNA residues in this entry.

5.5 Carbohydrates ⓘ

There are no carbohydrates in this entry.

5.6 Ligand geometry ⓘ

4 ligands are modelled in this entry.

In the following table, the Counts columns list the number of bonds (or angles) for which Mogul statistics could be retrieved, the number of bonds (or angles) that are observed in the model and the number of bonds (or angles) that are defined in the Chemical Component Dictionary. The Link column lists molecule types, if any, to which the group is linked. The Z score for a bond length (or angle) is the number of standard deviations the observed value is removed from the expected value. A bond length (or angle) with $|Z| > 2$ is considered an outlier worth inspection. RMSZ is the root-mean-square of all Z scores of the bond lengths (or angles).

Mol	Type	Chain	Res	Link	Bond lengths			Bond angles		
					Counts	RMSZ	$\# Z > 2$	Counts	RMSZ	$\# Z > 2$
3	SO4	B	702	-	4,4,4	0.18	0	6,6,6	0.05	0
3	SO4	A	702	-	4,4,4	0.14	0	6,6,6	0.06	0
2	0F2	A	701	-	30,36,36	2.66	3 (10%)	30,52,52	1.14	2 (6%)
2	0F2	B	701	-	30,36,36	2.68	3 (10%)	30,52,52	1.09	1 (3%)

In the following table, the Chirals column lists the number of chiral outliers, the number of chiral centers analysed, the number of these observed in the model and the number defined in the Chemical Component Dictionary. Similar counts are reported in the Torsion and Rings columns. '-' means no outliers of that kind were identified.

Mol	Type	Chain	Res	Link	Chirals	Torsions	Rings
2	0F2	A	701	-	-	4/18/30/30	0/5/5/5
2	0F2	B	701	-	-	10/18/30/30	0/5/5/5

All (6) bond length outliers are listed below:

Mol	Chain	Res	Type	Atoms	Z	Observed(Å)	Ideal(Å)
2	B	701	0F2	CAT-CAH	-11.69	1.39	1.50
2	A	701	0F2	CAT-CAH	-11.45	1.40	1.50
2	A	701	0F2	NAV-NAU	-7.02	1.24	1.37
2	B	701	0F2	NAV-NAU	-6.99	1.24	1.37
2	A	701	0F2	CAI-CAH	-3.22	1.34	1.39
2	B	701	0F2	CAI-CAH	-3.22	1.34	1.39

All (3) bond angle outliers are listed below:

Mol	Chain	Res	Type	Atoms	Z	Observed(°)	Ideal(°)
2	A	701	0F2	CAY-CAX-CAW	3.76	113.36	110.62
2	B	701	0F2	CAY-CAX-CAW	3.46	113.15	110.62
2	A	701	0F2	CAH-NAG-CAF	2.16	108.95	104.45

There are no chirality outliers.

All (14) torsion outliers are listed below:

Mol	Chain	Res	Type	Atoms
2	B	701	0F2	CAB-CAS-CBB-CBD
2	B	701	0F2	CBC-CAS-CBB-CBD
2	B	701	0F2	OBF-CAS-CBB-CBD
2	B	701	0F2	CAB-CAS-CBC-CBE
2	B	701	0F2	CBB-CAS-CBC-CBE
2	A	701	0F2	CAE-CAD-OAJ-CAK
2	A	701	0F2	CAA-CAD-OAJ-CAK
2	A	701	0F2	OAJ-CAK-CAL-NAM
2	B	701	0F2	OBF-CAS-CBC-CBE
2	B	701	0F2	CAA-CAD-OAJ-CAK
2	B	701	0F2	CAK-CAL-NAM-CAR
2	B	701	0F2	CAK-CAL-NAM-CAN
2	B	701	0F2	CAE-CAD-OAJ-CAK

Continued on next page...

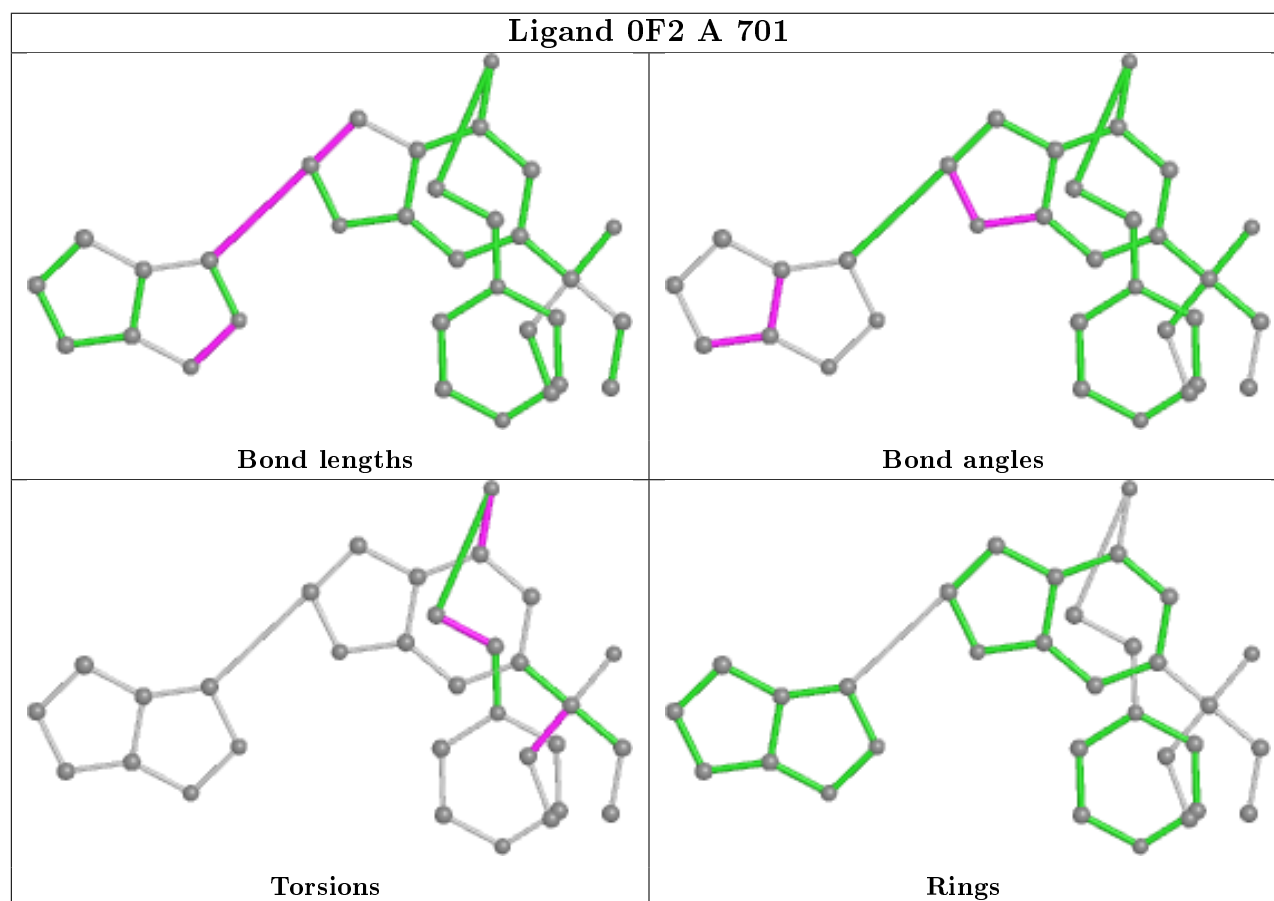
Continued from previous page...

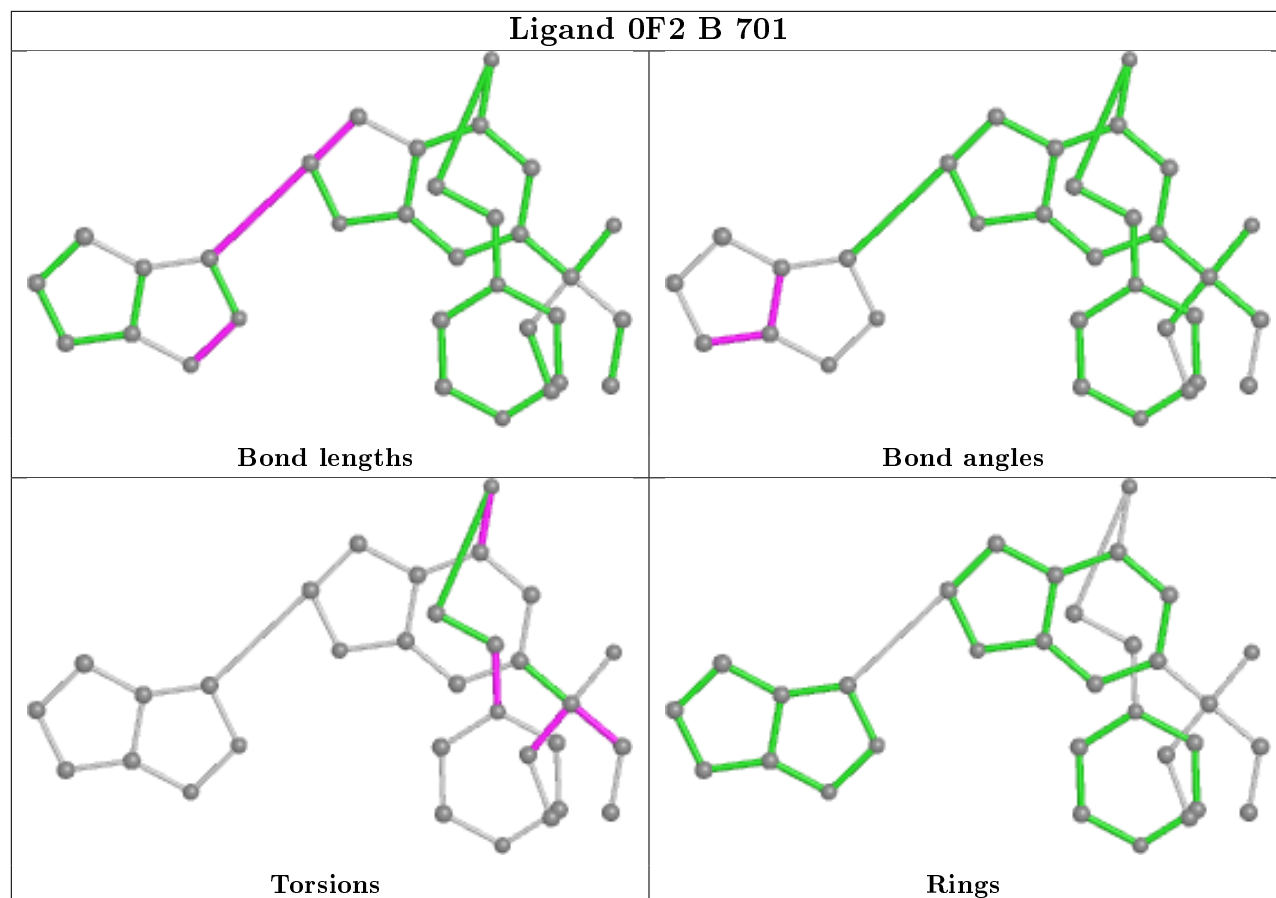
Mol	Chain	Res	Type	Atoms
2	A	701	0F2	CAB-CAS-CBB-CBD

There are no ring outliers.

No monomer is involved in short contacts.

The following is a two-dimensional graphical depiction of Mogul quality analysis of bond lengths, bond angles, torsion angles, and ring geometry for all instances of the Ligand of Interest. In addition, ligands with molecular weight > 250 and outliers as shown on the validation Tables will also be included. For torsion angles, if less than 5% of the Mogul distribution of torsion angles is within 10 degrees of the torsion angle in question, then that torsion angle is considered an outlier. Any bond that is central to one or more torsion angles identified as an outlier by Mogul will be highlighted in the graph. For rings, the root-mean-square deviation (RMSD) between the ring in question and similar rings identified by Mogul is calculated over all ring torsion angles. If the average RMSD is greater than 60 degrees and the minimal RMSD between the ring in question and any Mogul-identified rings is also greater than 60 degrees, then that ring is considered an outlier. The outliers are highlighted in purple. The color gray indicates Mogul did not find sufficient equivalents in the CSD to analyse the geometry.





5.7 Other polymers [i](#)

There are no such residues in this entry.

5.8 Polymer linkage issues [i](#)

There are no chain breaks in this entry.

6 Fit of model and data ⓘ

6.1 Protein, DNA and RNA chains ⓘ

In the following table, the column labelled ‘#RSRZ> 2’ contains the number (and percentage) of RSRZ outliers, followed by percent RSRZ outliers for the chain as percentile scores relative to all X-ray entries and entries of similar resolution. The OWAB column contains the minimum, median, 95th percentile and maximum values of the occupancy-weighted average B-factor per residue. The column labelled ‘Q< 0.9’ lists the number of (and percentage) of residues with an average occupancy less than 0.9.

Mol	Chain	Analysed	<RSRZ>	#RSRZ>2	OWAB(Å ²)	Q<0.9
1	A	241/266 (90%)	0.75	22 (9%) 9 6	33, 47, 75, 93	0
1	B	241/266 (90%)	0.83	32 (13%) 3 2	32, 46, 68, 94	0
All	All	482/532 (90%)	0.79	54 (11%) 5 3	32, 47, 74, 94	0

All (54) RSRZ outliers are listed below:

Mol	Chain	Res	Type	RSRZ
1	B	429	ALA	6.0
1	A	532	PHE	5.8
1	A	574	GLY	5.2
1	B	619	GLY	4.8
1	B	403	PHE	4.8
1	B	431	ILE	4.7
1	A	395	GLU	3.7
1	A	427	GLU	3.7
1	A	393	ILE	3.4
1	B	428	GLN	3.4
1	B	425	CYS	3.2
1	B	370	GLY	3.2
1	B	375	GLY	3.1
1	B	430	PRO	3.0
1	A	617	GLU	3.0
1	A	394	ARG	2.9
1	B	427	GLU	2.9
1	B	618	SER	2.9
1	B	402	ASP	2.9
1	A	428	GLN	2.7
1	A	529	VAL	2.7
1	B	501	PHE	2.7
1	B	575	PHE	2.7
1	A	372	GLY	2.6

Continued on next page...

Continued from previous page...

Mol	Chain	Res	Type	RSRZ
1	B	620	LEU	2.6
1	A	502	GLY	2.5
1	B	573	THR	2.5
1	B	426	LEU	2.5
1	B	565	SER	2.5
1	B	420	GLN	2.5
1	A	562	ARG	2.5
1	B	360	PRO	2.4
1	A	497	LYS	2.4
1	B	433	LEU	2.4
1	B	497	LYS	2.4
1	A	521	PRO	2.4
1	B	357	VAL	2.4
1	B	532	PHE	2.4
1	A	431	ILE	2.3
1	B	399	SER	2.3
1	A	361	SER	2.3
1	B	400	GLU	2.3
1	B	530	PHE	2.3
1	A	573	THR	2.3
1	A	576	ARG	2.2
1	B	432	CYS	2.2
1	A	586	HIS	2.1
1	A	598	ARG	2.1
1	B	405	GLU	2.1
1	B	495	VAL	2.1
1	A	360	PRO	2.1
1	A	399	SER	2.0
1	B	597	GLU	2.0
1	B	416	PRO	2.0

6.2 Non-standard residues in protein, DNA, RNA chains ⓘ

There are no non-standard protein/DNA/RNA residues in this entry.

6.3 Carbohydrates ⓘ

There are no carbohydrates in this entry.

6.4 Ligands

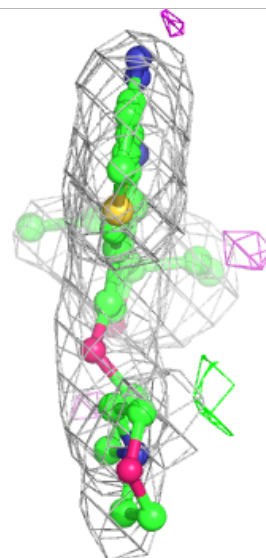
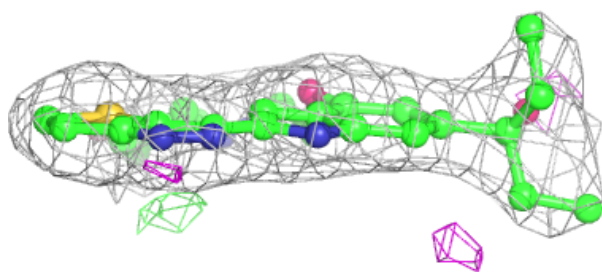
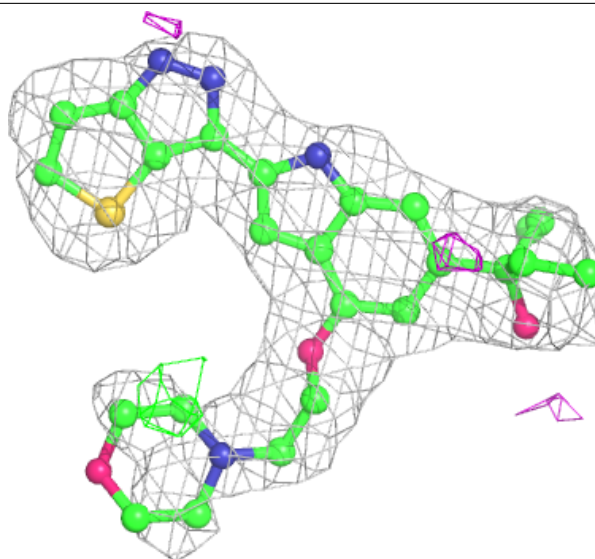
In the following table, the Atoms column lists the number of modelled atoms in the group and the number defined in the chemical component dictionary. The B-factors column lists the minimum, median, 95th percentile and maximum values of B factors of atoms in the group. The column labelled 'Q< 0.9' lists the number of atoms with occupancy less than 0.9.

Mol	Type	Chain	Res	Atoms	RSCC	RSR	B-factors(Å ²)	Q<0.9
3	SO4	A	702	5/5	0.86	0.17	104,109,110,110	0
2	0F2	A	701	32/32	0.96	0.16	12,38,101,212	0
2	0F2	B	701	32/32	0.96	0.15	16,48,114,149	0
3	SO4	B	702	5/5	0.98	0.12	47,52,52,53	0

The following is a graphical depiction of the model fit to experimental electron density of all instances of the Ligand of Interest. In addition, ligands with molecular weight > 250 and outliers as shown on the geometry validation Tables will also be included. Each fit is shown from different orientation to approximate a three-dimensional view.

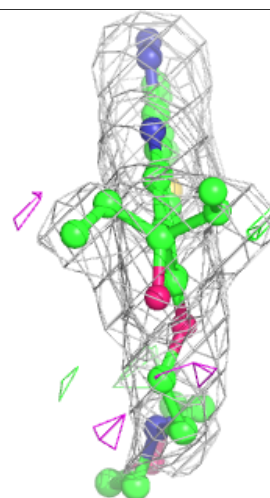
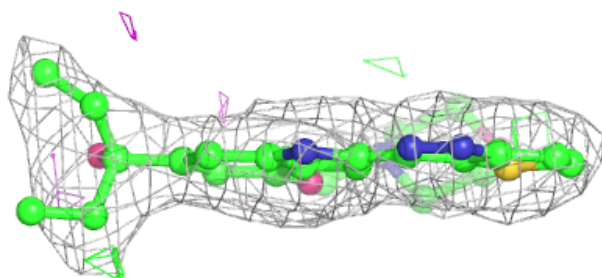
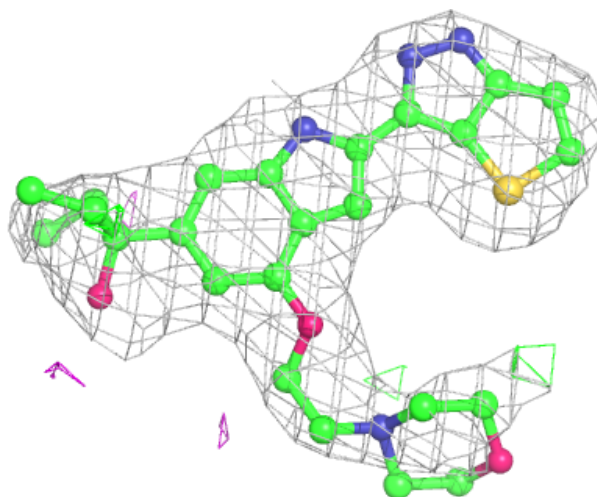
Electron density around 0F2 A 701:

$2mF_o-DF_c$ (at 0.7 rmsd) in gray
 mF_o-DF_c (at 3 rmsd) in purple (negative)
and green (positive)



Electron density around 0F2 B 701:

$2mF_o-DF_c$ (at 0.7 rmsd) in gray
 mF_o-DF_c (at 3 rmsd) in purple (negative)
and green (positive)



6.5 Other polymers ⓘ

There are no such residues in this entry.