



Full wwPDB EM Validation Report ⓘ

Nov 12, 2022 – 07:31 PM EST

PDB ID : 6V5B
EMDB ID : EMD-21051
Title : Human Drosha and DGCR8 in complex with Primary MicroRNA (MP/RNA complex) - Active state
Authors : Partin, A.; Zhang, K.; Jeong, B.; Herrell, E.; Li, S.; Chiu, W.; Nam, Y.
Deposited on : 2019-12-04
Resolution : 3.70 Å(reported)

This is a Full wwPDB EM Validation Report for a publicly released PDB entry.

We welcome your comments at validation@mail.wwpdb.org

A user guide is available at

<https://www.wwpdb.org/validation/2017/EMValidationReportHelp>
with specific help available everywhere you see the ⓘ symbol.

The types of validation reports are described at

<http://www.wwpdb.org/validation/2017/FAQs#types>.

The following versions of software and data (see [references ⓘ](#)) were used in the production of this report:

EMDB validation analysis : 0.0.1.dev43
MolProbity : 4.02b-467
Percentile statistics : 20191225.v01 (using entries in the PDB archive December 25th 2019)
MapQ : 1.9.9
Ideal geometry (proteins) : Engh & Huber (2001)
Ideal geometry (DNA, RNA) : Parkinson et al. (1996)
Validation Pipeline (wwPDB-VP) : 2.31.2

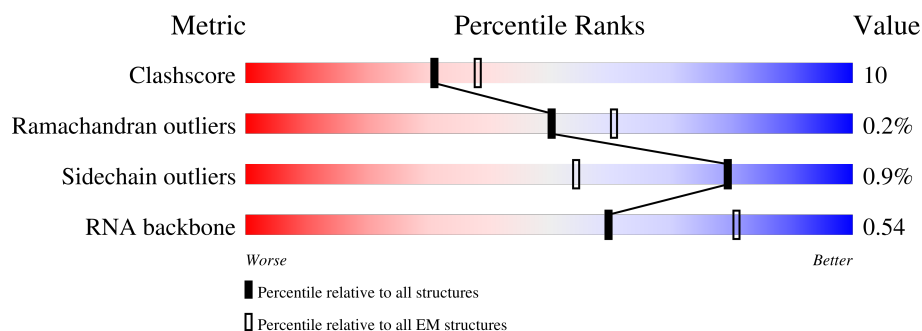
1 Overall quality at a glance

The following experimental techniques were used to determine the structure:

ELECTRON MICROSCOPY

The reported resolution of this entry is 3.70 Å.

Percentile scores (ranging between 0-100) for global validation metrics of the entry are shown in the following graphic. The table shows the number of entries on which the scores are based.



Metric	Whole archive (#Entries)	EM structures (#Entries)
Clashscore	158937	4297
Ramachandran outliers	154571	4023
Sidechain outliers	154315	3826
RNA backbone	4643	859

The table below summarises the geometric issues observed across the polymeric chains and their fit to the map. The red, orange, yellow and green segments of the bar indicate the fraction of residues that contain outliers for ≥ 3 , 2, 1 and 0 types of geometric quality criteria respectively. A grey segment represents the fraction of residues that are not modelled. The numeric value for each fraction is indicated below the corresponding segment, with a dot representing fractions $\leq 5\%$. The upper red bar (where present) indicates the fraction of residues that have poor fit to the EM map (all-atom inclusion $< 40\%$). The numeric value is given above the bar.

Mol	Chain	Length	Quality of chain
1	A	1016	 15% 30% 11% 59%
2	B	532	 21% 32% 8% 59%
2	C	532	 33% 32% 7% 26%

2 Entry composition

There are 5 unique types of molecules in this entry. The entry contains 12563 atoms, of which 0 are hydrogens and 0 are deuteriums.

In the tables below, the AltConf column contains the number of residues with at least one atom in alternate conformation and the Trace column contains the number of residues modelled with at most 2 atoms.

- Molecule 1 is a protein called Ribonuclease 3.

Mol	Chain	Residues	Atoms					AltConf	Trace
			Total	C	N	O	S		
1	A	908	7419	4726	1309	1334	50	0	0

There are 3 discrepancies between the modelled and reference sequences:

Chain	Residue	Modelled	Actual	Comment	Reference
A	350	GLY	-	expression tag	UNP Q9NRR4
A	351	SER	-	expression tag	UNP Q9NRR4
A	352	GLY	-	expression tag	UNP Q9NRR4

- Molecule 2 is a protein called Microprocessor complex subunit DGCR8.

Mol	Chain	Residues	Atoms					AltConf	Trace
			Total	C	N	O	S		
2	C	217	1750	1105	312	323	10	0	0
2	B	216	1739	1099	308	322	10	0	0

There are 6 discrepancies between the modelled and reference sequences:

Chain	Residue	Modelled	Actual	Comment	Reference
C	220	GLY	-	expression tag	UNP Q8WYQ5
C	221	SER	-	expression tag	UNP Q8WYQ5
C	222	GLY	-	expression tag	UNP Q8WYQ5
B	220	GLY	-	expression tag	UNP Q8WYQ5
B	221	SER	-	expression tag	UNP Q8WYQ5
B	222	GLY	-	expression tag	UNP Q8WYQ5

- Molecule 3 is a RNA chain called Pri-miR-16-2 (78-MER).

Mol	Chain	Residues	Atoms					AltConf	Trace
			Total	C	N	O	P		
3	D	78	1652	740	287	547	78	0	0

- Molecule 4 is ZINC ION (three-letter code: ZN) (formula: Zn) (labeled as "Ligand of Interest" by depositor).

Mol	Chain	Residues	Atoms		AltConf
4	A	2	Total 2	Zn 2	0

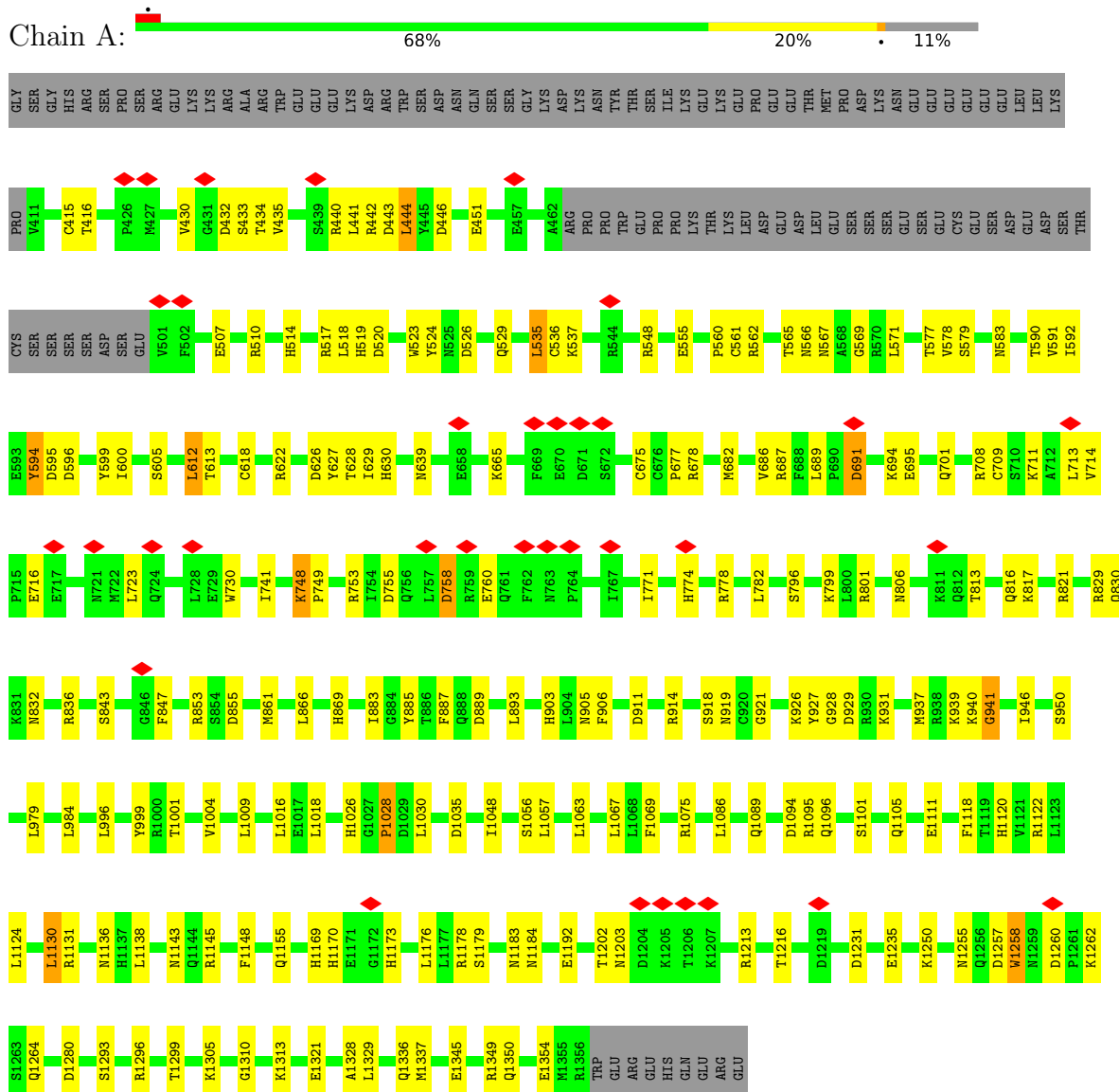
- Molecule 5 is CALCIUM ION (three-letter code: CA) (formula: Ca) (labeled as "Ligand of Interest" by depositor).

Mol	Chain	Residues	Atoms		AltConf
5	A	1	Total 1	Ca 1	0

3 Residue-property plots

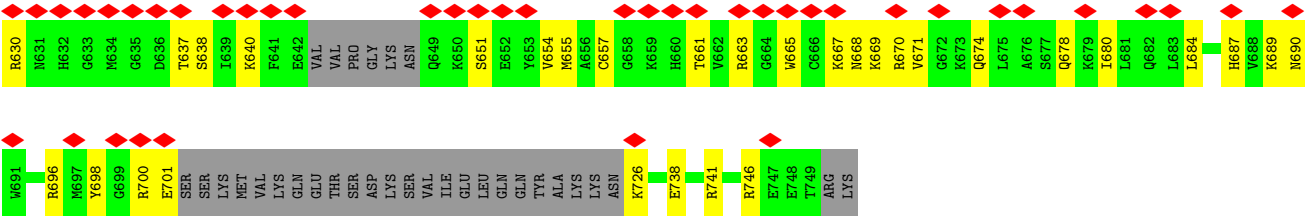
These plots are drawn for all protein, RNA, DNA and oligosaccharide chains in the entry. The first graphic for a chain summarises the proportions of the various outlier classes displayed in the second graphic. The second graphic shows the sequence view annotated by issues in geometry and atom inclusion in map density. Residues are color-coded according to the number of geometric quality criteria for which they contain at least one outlier: green = 0, yellow = 1, orange = 2 and red = 3 or more. A red diamond above a residue indicates a poor fit to the EM map for this residue (all-atom inclusion < 40%). Stretches of 2 or more consecutive residues without any outlier are shown as a green connector. Residues present in the sample, but not in the model, are shown in grey.

• Molecule 1: Ribonuclease 3

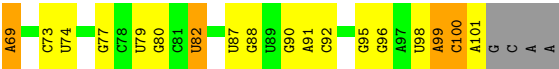
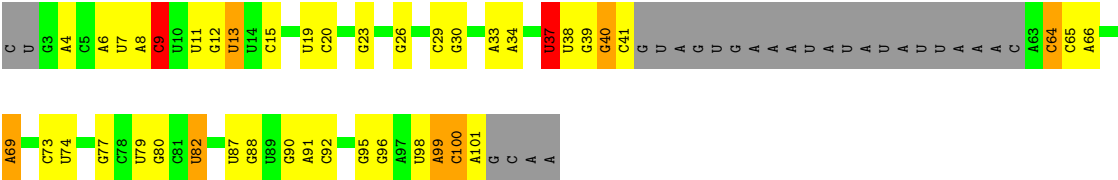
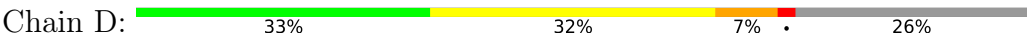


• Molecule 2: Microprocessor complex subunit DGCR8





• Molecule 3: Pri-miR-16-2 (78-MER)



4 Experimental information

Property	Value	Source
EM reconstruction method	SINGLE PARTICLE	Depositor
Imposed symmetry	POINT, C1	Depositor
Number of particles used	505640	Depositor
Resolution determination method	FSC 0.143 CUT-OFF	Depositor
CTF correction method	PHASE FLIPPING AND AMPLITUDE CORRECTION	Depositor
Microscope	FEI TITAN KRIOS	Depositor
Voltage (kV)	300	Depositor
Electron dose ($e^-/\text{\AA}^2$)	46.8	Depositor
Minimum defocus (nm)	1300	Depositor
Maximum defocus (nm)	3000	Depositor
Magnification	130000	Depositor
Image detector	GATAN K2 SUMMIT (4k x 4k)	Depositor
Maximum map value	3.387	Depositor
Minimum map value	-2.247	Depositor
Average map value	0.012	Depositor
Map value standard deviation	0.101	Depositor
Recommended contour level	0.6	Depositor
Map size (Å)	271.36, 271.36, 271.36	wwPDB
Map dimensions	256, 256, 256	wwPDB
Map angles (°)	90.0, 90.0, 90.0	wwPDB
Pixel spacing (Å)	1.06, 1.06, 1.06	Depositor

5 Model quality [i](#)

5.1 Standard geometry [i](#)

Bond lengths and bond angles in the following residue types are not validated in this section: ZN, CA

The Z score for a bond length (or angle) is the number of standard deviations the observed value is removed from the expected value. A bond length (or angle) with $|Z| > 5$ is considered an outlier worth inspection. RMSZ is the root-mean-square of all Z scores of the bond lengths (or angles).

Mol	Chain	Bond lengths		Bond angles	
		RMSZ	$\# Z > 5$	RMSZ	$\# Z > 5$
1	A	0.43	0/7603	0.63	9/10279 (0.1%)
2	B	0.37	1/1769 (0.1%)	0.64	4/2369 (0.2%)
2	C	0.31	0/1780	0.58	2/2383 (0.1%)
3	D	0.77	0/1844	1.23	15/2866 (0.5%)
All	All	0.47	1/12996 (0.0%)	0.75	30/17897 (0.2%)

Chiral center outliers are detected by calculating the chiral volume of a chiral center and verifying if the center is modelled as a planar moiety or with the opposite hand. A planarity outlier is detected by checking planarity of atoms in a peptide group, atoms in a mainchain group or atoms of a sidechain that are expected to be planar.

Mol	Chain	#Chirality outliers	#Planarity outliers
1	A	0	5
2	C	0	1
All	All	0	6

All (1) bond length outliers are listed below:

Mol	Chain	Res	Type	Atoms	Z	Observed(Å)	Ideal(Å)
2	B	609	TYR	CB-CG	5.86	1.60	1.51

All (30) bond angle outliers are listed below:

Mol	Chain	Res	Type	Atoms	Z	Observed(°)	Ideal(°)
1	A	855	ASP	CB-CG-OD1	10.33	127.60	118.30
1	A	596	ASP	CB-CG-OD1	8.10	125.59	118.30
3	D	29	C	C2-N1-C1'	6.60	126.06	118.80
3	D	37	U	N1-C2-O2	6.49	127.34	122.80
3	D	15	C	N1-C2-O2	6.39	122.74	118.90
3	D	9	C	N1-C2-O2	6.29	122.67	118.90

Continued on next page...

Continued from previous page...

Mol	Chain	Res	Type	Atoms	Z	Observed(°)	Ideal(°)
1	A	691	ASP	CB-CG-OD1	6.28	123.95	118.30
1	A	1138	LEU	CA-CB-CG	6.24	129.65	115.30
3	D	37	U	N3-C2-O2	-6.21	117.86	122.20
2	B	610	GLU	CA-C-N	-6.09	103.81	117.20
3	D	13	U	C2-N1-C1'	6.08	125.00	117.70
3	D	9	C	N3-C2-O2	-6.06	117.66	121.90
2	C	516	LEU	CA-CB-CG	5.99	129.07	115.30
2	B	610	GLU	N-CA-C	-5.82	95.29	111.00
3	D	82	U	N3-C2-O2	-5.78	118.16	122.20
1	A	1130	LEU	CA-CB-CG	5.73	128.48	115.30
1	A	535	LEU	CA-CB-CG	5.73	128.47	115.30
1	A	1231	ASP	CB-CG-OD1	5.52	123.27	118.30
2	C	549	ASP	CB-CG-OD1	5.51	123.26	118.30
2	B	608	VAL	O-C-N	-5.45	113.97	122.70
3	D	92	C	C2-N1-C1'	5.39	124.73	118.80
3	D	15	C	N3-C2-O2	-5.37	118.14	121.90
3	D	64	C	N1-C2-O2	5.35	122.11	118.90
3	D	9	C	C2-N1-C1'	5.34	124.67	118.80
2	B	516	LEU	CA-CB-CG	5.33	127.55	115.30
3	D	29	C	N1-C2-O2	5.32	122.09	118.90
3	D	82	U	N1-C2-O2	5.32	126.52	122.80
3	D	9	C	C6-N1-C2	-5.23	118.21	120.30
1	A	526	ASP	CB-CG-OD1	5.12	122.91	118.30
1	A	758	ASP	CB-CG-OD1	5.03	122.82	118.30

There are no chirality outliers.

All (6) planarity outliers are listed below:

Mol	Chain	Res	Type	Group
1	A	1028	PRO	Peptide
1	A	451	GLU	Peptide
1	A	714	VAL	Peptide
1	A	748	LYS	Peptide
1	A	941	GLY	Peptide
2	C	608	VAL	Mainchain

5.2 Too-close contacts [i](#)

In the following table, the Non-H and H(model) columns list the number of non-hydrogen atoms and hydrogen atoms in the chain respectively. The H(added) column lists the number of hydrogen atoms added and optimized by MolProbity. The Clashes column lists the number of clashes within

the asymmetric unit, whereas Symm-Clashes lists symmetry-related clashes.

Mol	Chain	Non-H	H(model)	H(added)	Clashes	Symm-Clashes
1	A	7419	0	7352	134	0
2	B	1739	0	1753	39	0
2	C	1750	0	1766	51	0
3	D	1652	0	837	28	0
4	A	2	0	0	0	0
5	A	1	0	0	0	0
All	All	12563	0	11708	236	0

The all-atom clashscore is defined as the number of clashes found per 1000 atoms (including hydrogen atoms). The all-atom clashscore for this structure is 10.

All (236) close contacts within the same asymmetric unit are listed below, sorted by their clash magnitude.

Atom-1	Atom-2	Interatomic distance (Å)	Clash overlap (Å)
2:C:609:TYR:HE2	2:C:674:GLN:OE1	1.16	1.25
2:C:609:TYR:HE2	2:C:674:GLN:CD	1.55	1.07
2:C:609:TYR:CE2	2:C:674:GLN:OE1	2.08	1.04
2:C:609:TYR:CE2	2:C:674:GLN:CD	2.32	1.03
2:C:609:TYR:CD1	2:C:620:PRO:CD	2.52	0.93
2:C:609:TYR:CD1	2:C:620:PRO:HD3	2.06	0.90
2:C:609:TYR:CE1	2:C:620:PRO:HD2	2.07	0.89
2:B:609:TYR:HA	2:B:612:THR:HG23	1.56	0.88
2:B:609:TYR:C	2:B:611:LEU:H	1.64	0.87
1:A:443:ASP:O	1:A:446:ASP:HB3	1.76	0.86
2:C:609:TYR:CE2	2:C:674:GLN:CG	2.63	0.82
2:C:609:TYR:CE1	2:C:620:PRO:CD	2.63	0.81
2:C:572:THR:O	2:C:576:LEU:HB2	1.86	0.76
2:C:609:TYR:CD1	2:C:620:PRO:HD2	2.22	0.72
2:C:609:TYR:CE2	2:C:674:GLN:CB	2.72	0.71
2:C:570:ARG:O	2:C:574:GLU:HB2	1.93	0.69
1:A:579:SER:HB2	1:A:628:THR:H	1.58	0.69
2:C:609:TYR:HE1	2:C:619:SER:HA	1.58	0.69
2:C:619:SER:H	2:C:622:GLN:HE21	1.39	0.68
1:A:771:ILE:HD11	1:A:843:SER:HB3	1.75	0.68
1:A:518:LEU:H	1:A:748:LYS:HG3	1.60	0.65
1:A:730:TRP:HZ2	1:A:758:ASP:HB3	1.62	0.65
1:A:629:ILE:HD12	1:A:866:LEU:HD12	1.79	0.64
1:A:1255:ASN:O	1:A:1258:TRP:NE1	2.32	0.63
2:C:609:TYR:HD1	2:C:620:PRO:HD3	1.58	0.62
2:B:598:PHE:O	2:B:690:ASN:ND2	2.33	0.62

Continued on next page...

Continued from previous page...

Atom-1	Atom-2	Interatomic distance (Å)	Clash overlap (Å)
1:A:836:ARG:NH2	3:D:99:A:N7	2.48	0.62
1:A:796:SER:OG	1:A:821:ARG:NH1	2.33	0.61
1:A:1035:ASP:N	1:A:1035:ASP:OD1	2.32	0.61
1:A:583:ASN:HD21	1:A:926:LYS:H	1.48	0.61
2:C:608:VAL:C	2:C:610:GLU:H	2.03	0.61
2:B:619:SER:HB3	2:B:622:GLN:HG2	1.83	0.60
2:C:541:PRO:HD2	2:C:559:SER:HA	1.83	0.60
1:A:415:CYS:SG	1:A:416:THR:N	2.74	0.60
2:C:609:TYR:CD2	2:C:674:GLN:HB3	2.37	0.59
2:C:609:TYR:CE1	2:C:620:PRO:HD3	2.34	0.59
2:B:605:ASP:O	2:B:674:GLN:NE2	2.36	0.59
2:B:609:TYR:CD1	2:B:612:THR:OG1	2.55	0.59
1:A:594:TYR:OH	1:A:701:GLN:NE2	2.37	0.58
1:A:806:ASN:HD21	1:A:1336:GLN:HE21	1.51	0.58
1:A:689:LEU:HD23	1:A:695:GLU:HG2	1.85	0.58
1:A:1155:GLN:OE1	1:A:1178:ARG:NH1	2.37	0.58
1:A:555:GLU:OE2	1:A:678:ARG:NH1	2.36	0.58
2:B:651:SER:O	2:B:665:TRP:HA	2.04	0.57
2:C:609:TYR:CE2	2:C:674:GLN:HB3	2.38	0.57
2:B:667:LYS:HB2	2:B:671:VAL:HG11	1.87	0.57
2:B:604:GLU:OE1	2:B:678:GLN:NE2	2.38	0.57
3:D:30:G:H22	3:D:74:U:H3	1.53	0.56
2:C:602:SER:OG	2:C:603:ILE:N	2.38	0.56
1:A:778:ARG:NH2	1:A:832:ASN:O	2.37	0.56
1:A:548:ARG:NH1	1:A:1026:HIS:O	2.38	0.56
1:A:561:CYS:SG	1:A:562:ARG:N	2.75	0.56
1:A:708:ARG:NH1	1:A:709:CYS:SG	2.79	0.56
1:A:753:ARG:NH1	1:A:921:GLY:O	2.39	0.55
2:B:655:MET:HG2	2:B:657:CYS:HB2	1.88	0.55
1:A:1299:THR:HG22	1:A:1313:LYS:HG2	1.89	0.54
3:D:79:U:H2'	3:D:80:G:H8	1.71	0.54
1:A:599:TYR:OH	1:A:687:ARG:NH1	2.38	0.54
1:A:1069:PHE:O	1:A:1075:ARG:NH2	2.40	0.54
1:A:548:ARG:HH11	1:A:1026:HIS:HB3	1.71	0.54
1:A:1145:ARG:O	1:A:1148:PHE:HB3	2.08	0.54
2:B:700:ARG:NH2	2:B:701:GLU:OE2	2.41	0.54
1:A:524:TYR:HA	1:A:749:PRO:HG3	1.89	0.53
1:A:583:ASN:OD1	1:A:627:TYR:OH	2.27	0.53
1:A:686:VAL:HG23	1:A:694:LYS:HB2	1.90	0.53
2:B:527:ARG:NH2	3:D:66:A:O2'	2.41	0.53
1:A:799:LYS:NZ	3:D:91:A:OP1	2.37	0.53

Continued on next page...

Continued from previous page...

Atom-1	Atom-2	Interatomic distance (Å)	Clash overlap (Å)
1:A:801:ARG:HH12	3:D:6:A:H62	1.56	0.53
1:A:1095:ARG:NH2	1:A:1111:GLU:OE2	2.38	0.53
1:A:753:ARG:HG2	1:A:774:HIS:CD2	2.44	0.52
2:C:603:ILE:O	2:C:678:GLN:NE2	2.42	0.52
1:A:524:TYR:HB3	1:A:748:LYS:HA	1.92	0.52
1:A:1202:THR:OG1	1:A:1203:ASN:N	2.42	0.52
1:A:548:ARG:HD3	1:A:1026:HIS:HB3	1.92	0.52
1:A:741:ILE:HD12	1:A:847:PHE:HB3	1.91	0.52
1:A:605:SER:N	1:A:682:MET:O	2.42	0.52
1:A:929:ASP:OD1	1:A:929:ASP:N	2.43	0.51
1:A:433:SER:OG	1:A:434:THR:N	2.43	0.51
1:A:535:LEU:HD23	1:A:536:CYS:HB2	1.91	0.51
1:A:440:ARG:HD2	1:A:442:ARG:HG3	1.91	0.51
1:A:432:ASP:HB2	1:A:569:GLY:HA3	1.93	0.51
1:A:590:THR:HB	1:A:853:ARG:HB2	1.91	0.51
1:A:1094:ASP:OD2	1:A:1122:ARG:N	2.43	0.51
2:C:623:ILE:HA	2:C:626:GLU:HG2	1.92	0.51
1:A:984:LEU:HB3	1:A:996:LEU:HD11	1.92	0.51
2:B:620:PRO:HA	2:B:623:ILE:HD12	1.92	0.51
2:B:570:ARG:NH2	2:B:574:GLU:OE2	2.44	0.51
1:A:1094:ASP:HB3	1:A:1120:HIS:HA	1.92	0.50
3:D:4:A:H61	3:D:100:C:H42	1.59	0.50
2:B:575:ILE:O	2:B:696:ARG:NE	2.43	0.50
2:C:691:TRP:HE1	2:C:695:LEU:HD13	1.75	0.50
2:B:605:ASP:OD1	2:B:605:ASP:N	2.44	0.50
1:A:817:LYS:HE3	1:A:821:ARG:HH21	1.76	0.50
2:B:527:ARG:HH22	3:D:66:A:H4'	1.77	0.50
1:A:595:ASP:OD1	1:A:595:ASP:N	2.45	0.49
1:A:1310:GLY:HA3	1:A:1328:ALA:HB2	1.94	0.49
1:A:618:CYS:SG	1:A:869:HIS:ND1	2.73	0.49
1:A:622:ARG:NH2	1:A:861:MET:O	2.43	0.49
1:A:612:LEU:HD12	1:A:613:THR:H	1.78	0.49
1:A:430:VAL:HG12	1:A:562:ARG:HH12	1.78	0.49
1:A:441:LEU:HA	1:A:444:LEU:HD21	1.94	0.49
1:A:578:VAL:HG12	1:A:629:ILE:HG22	1.95	0.49
1:A:626:ASP:HB2	1:A:931:LYS:HD3	1.95	0.49
1:A:918:SER:OG	1:A:919:ASN:N	2.45	0.49
1:A:1101:SER:OG	1:A:1105:GLN:OE1	2.26	0.49
1:A:1169:HIS:HB3	1:A:1173:HIS:HB2	1.94	0.49
1:A:1262:LYS:HD2	1:A:1321:GLU:HG2	1.95	0.48
1:A:723:LEU:HD22	1:A:760:GLU:HG2	1.94	0.48

Continued on next page...

Continued from previous page...

Atom-1	Atom-2	Interatomic distance (Å)	Clash overlap (Å)
2:B:687:HIS:O	2:B:689:LYS:NZ	2.43	0.48
2:B:609:TYR:OH	2:B:670:ARG:HD3	2.12	0.48
2:C:608:VAL:C	2:C:610:GLU:N	2.66	0.48
3:D:11:U:H2'	3:D:12:G:H8	1.79	0.48
2:B:609:TYR:CD2	2:B:610:GLU:HG3	2.49	0.47
2:C:560:SER:OG	2:C:561:LYS:N	2.46	0.47
1:A:519:HIS:O	1:A:748:LYS:NZ	2.47	0.47
1:A:1056:SER:OG	1:A:1057:LEU:N	2.47	0.47
1:A:1345:GLU:O	1:A:1349:ARG:NH1	2.46	0.47
2:C:608:VAL:O	2:C:610:GLU:N	2.48	0.47
2:B:626:GLU:HG3	2:B:698:TYR:HB3	1.96	0.47
1:A:432:ASP:OD1	1:A:432:ASP:N	2.39	0.47
1:A:883:ILE:HG22	1:A:885:TYR:H	1.80	0.47
1:A:1016:LEU:HB3	1:A:1018:LEU:HD23	1.96	0.47
2:C:522:ARG:HH22	3:D:37:U:H5'	1.79	0.47
1:A:562:ARG:HB2	1:A:567:ASN:HD21	1.79	0.47
1:A:1260:ASP:OD1	1:A:1264:GLN:NE2	2.40	0.47
1:A:1293:SER:HA	1:A:1296:ARG:HE	1.80	0.47
2:B:640:LYS:HE3	2:B:669:LYS:HE3	1.97	0.47
1:A:755:ASP:OD1	1:A:755:ASP:N	2.48	0.46
2:B:551:VAL:HG11	2:B:684:LEU:HB3	1.96	0.46
3:D:33:A:H2'	3:D:34:A:H8	1.80	0.46
1:A:433:SER:OG	1:A:566:ASN:OD1	2.28	0.46
1:A:517:ARG:HG3	1:A:748:LYS:HD3	1.98	0.46
1:A:905:ASN:N	1:A:905:ASN:OD1	2.46	0.46
1:A:939:LYS:HD2	1:A:940:LYS:HG3	1.98	0.46
1:A:1179:SER:O	1:A:1183:ASN:ND2	2.34	0.46
1:A:914:ARG:NH2	3:D:98:U:OP2	2.48	0.46
1:A:1257:ASP:OD1	1:A:1258:TRP:N	2.48	0.46
1:A:1048:ILE:HD13	1:A:1063:LEU:HD22	1.98	0.46
1:A:548:ARG:HD3	1:A:1026:HIS:H	1.81	0.46
1:A:665:LYS:HE2	1:A:677:PRO:HD3	1.97	0.46
1:A:1094:ASP:O	1:A:1096:GLN:N	2.49	0.46
1:A:903:HIS:HE1	3:D:9:C:H1'	1.80	0.46
1:A:1089:GLN:OE1	1:A:1122:ARG:NH1	2.49	0.46
2:C:508:ASN:ND2	2:C:614:LYS:O	2.49	0.46
2:C:512:GLU:HA	2:C:515:ILE:HD12	1.97	0.46
2:C:609:TYR:CD2	2:C:674:GLN:CB	2.98	0.45
1:A:443:ASP:N	1:A:443:ASP:OD1	2.47	0.45
2:C:508:ASN:OD1	2:C:508:ASN:N	2.49	0.45
2:C:619:SER:HB3	2:C:622:GLN:HG2	1.97	0.45

Continued on next page...

Continued from previous page...

Atom-1	Atom-2	Interatomic distance (Å)	Clash overlap (Å)
1:A:1001:THR:HA	1:A:1004:VAL:HG12	1.97	0.45
1:A:1086:LEU:HD22	1:A:1122:ARG:HB3	1.99	0.45
1:A:1030:LEU:HD23	1:A:1030:LEU:HA	1.87	0.45
2:C:521:GLN:HA	2:C:525:LYS:HA	1.99	0.45
2:B:610:GLU:O	2:B:614:LYS:HB2	2.16	0.45
1:A:507:GLU:OE2	1:A:510:ARG:NH1	2.50	0.45
2:B:610:GLU:O	2:B:614:LYS:HD3	2.16	0.45
2:B:655:MET:O	2:B:661:THR:HA	2.17	0.45
3:D:39:G:H2'	3:D:40:G:C8	2.52	0.45
3:D:95:G:H2'	3:D:96:G:H8	1.81	0.45
1:A:514:HIS:HB3	1:A:517:ARG:HB2	1.99	0.45
1:A:435:VAL:HG11	1:A:639:ASN:HA	1.99	0.45
1:A:577:THR:O	1:A:630:HIS:N	2.41	0.45
1:A:520:ASP:OD1	1:A:520:ASP:N	2.49	0.44
3:D:33:A:H2'	3:D:34:A:C8	2.51	0.44
1:A:560:PRO:HG3	1:A:675:CYS:HA	1.99	0.44
3:D:39:G:H2'	3:D:40:G:H8	1.82	0.44
1:A:713:LEU:HB3	1:A:716:GLU:HA	1.99	0.44
1:A:1184:ASN:N	3:D:20:C:OP1	2.42	0.44
3:D:38:U:H2'	3:D:39:G:H8	1.82	0.44
1:A:889:ASP:OD1	1:A:889:ASP:N	2.43	0.44
2:B:495:GLN:HA	2:B:502:GLU:HG3	1.99	0.44
2:B:609:TYR:HD2	2:B:610:GLU:HG3	1.82	0.44
1:A:1136:ASN:N	1:A:1136:ASN:OD1	2.50	0.43
1:A:1250:LYS:HA	1:A:1250:LYS:HD3	1.86	0.43
1:A:518:LEU:HB2	1:A:748:LYS:HG3	1.99	0.43
1:A:813:THR:HA	1:A:816:GLN:HB3	2.00	0.43
1:A:1176:LEU:HD23	1:A:1176:LEU:HA	1.83	0.43
1:A:979:LEU:HD23	1:A:979:LEU:HA	1.90	0.43
1:A:1350:GLN:O	1:A:1354:GLU:N	2.45	0.43
3:D:87:U:H2'	3:D:88:G:H8	1.84	0.43
2:C:513:VAL:HG11	2:C:565:LYS:HB3	2.00	0.43
2:C:516:LEU:HD11	2:C:569:ALA:HA	1.99	0.43
2:C:620:PRO:HA	2:C:623:ILE:HG12	2.00	0.43
1:A:435:VAL:O	1:A:565:THR:OG1	2.22	0.43
2:C:609:TYR:CZ	2:C:674:GLN:HG2	2.54	0.43
2:B:637:THR:OG1	2:B:638:SER:N	2.52	0.43
3:D:19:U:H2'	3:D:20:C:H6	1.84	0.43
3:D:38:U:H2'	3:D:39:G:C8	2.54	0.43
1:A:1235:GLU:HG3	2:B:746:ARG:HH12	1.83	0.42
1:A:591:VAL:HG23	1:A:600:ILE:HG13	2.00	0.42

Continued on next page...

Continued from previous page...

Atom-1	Atom-2	Interatomic distance (Å)	Clash overlap (Å)
1:A:937:MET:HB2	1:A:1170:HIS:CE1	2.55	0.42
2:C:609:TYR:CZ	2:C:674:GLN:CD	2.88	0.42
1:A:711:LYS:HD3	1:A:711:LYS:HA	1.83	0.42
1:A:1192:GLU:OE1	2:B:726:LYS:NZ	2.43	0.42
2:C:598:PHE:HE2	2:C:617:LEU:HD23	1.85	0.42
1:A:567:ASN:O	1:A:571:LEU:N	2.52	0.42
1:A:1067:LEU:HD12	1:A:1067:LEU:HA	1.88	0.42
1:A:1213:ARG:HB3	1:A:1216:THR:HG22	2.00	0.42
1:A:1009:LEU:HD23	1:A:1009:LEU:HA	1.92	0.42
2:C:506:ASN:OD1	2:C:506:ASN:N	2.53	0.42
2:C:527:ARG:HE	3:D:69:A:H4'	1.84	0.42
2:C:596:GLU:O	2:C:600:HIS:ND1	2.53	0.42
2:B:517:HIS:NE2	3:D:66:A:O2'	2.34	0.42
2:B:555:SER:OG	2:B:556:GLY:N	2.53	0.42
1:A:1118:PHE:HE2	1:A:1124:LEU:HD13	1.85	0.41
1:A:946:ILE:O	1:A:950:SER:OG	2.33	0.41
1:A:999:TYR:CG	2:C:735:LEU:HD12	2.55	0.41
1:A:592:ILE:HG23	1:A:599:TYR:HB2	2.02	0.41
2:C:630:ARG:HB2	2:C:698:TYR:HE1	1.85	0.41
3:D:79:U:H2'	3:D:80:G:C8	2.52	0.41
1:A:529:GLN:NE2	1:A:911:ASP:OD2	2.43	0.41
1:A:537:LYS:HD3	1:A:537:LYS:HA	1.76	0.41
1:A:1262:LYS:HE2	1:A:1262:LYS:HB3	1.81	0.41
2:B:668:ASN:OD1	2:B:669:LYS:N	2.53	0.41
2:B:738:GLU:OE2	2:B:741:ARG:NH2	2.54	0.41
1:A:927:TYR:HA	1:A:928:GLY:HA3	1.85	0.41
1:A:1329:LEU:HD11	1:A:1337:MET:HE2	2.03	0.41
3:D:73:C:H2'	3:D:74:U:H6	1.85	0.41
2:B:668:ASN:HB3	2:B:671:VAL:H	1.86	0.41
1:A:435:VAL:HG21	1:A:639:ASN:H	1.86	0.41
2:C:694:LEU:O	2:C:698:TYR:HB2	2.21	0.41
2:B:680:ILE:HD13	2:B:680:ILE:HA	1.93	0.41
1:A:829:ARG:O	1:A:830:GLN:NE2	2.54	0.41
1:A:1130:LEU:HA	1:A:1143:ASN:HD21	1.86	0.40
1:A:1131:ARG:HD2	1:A:1131:ARG:HA	1.95	0.40
2:C:561:LYS:H	2:C:561:LYS:HG2	1.66	0.40
2:C:598:PHE:O	2:C:692:GLY:N	2.50	0.40
2:C:607:ARG:HH11	2:C:611:LEU:HD11	1.87	0.40
1:A:523:TRP:HH2	1:A:782:LEU:HD13	1.87	0.40
1:A:887:PHE:HD2	1:A:893:LEU:HD22	1.86	0.40
1:A:1016:LEU:HD12	1:A:1016:LEU:HA	1.92	0.40

Continued on next page...

Continued from previous page...

Atom-1	Atom-2	Interatomic distance (Å)	Clash overlap (Å)
2:C:572:THR:O	2:C:576:LEU:CB	2.63	0.40
2:B:522:ARG:HG3	3:D:40:G:H4'	2.03	0.40
1:A:1280:ASP:OD2	1:A:1305:LYS:NZ	2.37	0.40
1:A:1293:SER:HB2	1:A:1296:ARG:HH11	1.86	0.40
2:B:503:PHE:HE2	3:D:39:G:H5''	1.86	0.40

There are no symmetry-related clashes.

5.3 Torsion angles [i](#)

5.3.1 Protein backbone [i](#)

In the following table, the Percentiles column shows the percent Ramachandran outliers of the chain as a percentile score with respect to all PDB entries followed by that with respect to all EM entries.

The Analysed column shows the number of residues for which the backbone conformation was analysed, and the total number of residues.

Mol	Chain	Analysed	Favoured	Allowed	Outliers	Percentiles	
1	A	904/1016 (89%)	775 (86%)	127 (14%)	2 (0%)	47	78
2	B	206/532 (39%)	192 (93%)	14 (7%)	0	100	100
2	C	207/532 (39%)	194 (94%)	13 (6%)	0	100	100
All	All	1317/2080 (63%)	1161 (88%)	154 (12%)	2 (0%)	50	78

All (2) Ramachandran outliers are listed below:

Mol	Chain	Res	Type
1	A	941	GLY
1	A	1028	PRO

5.3.2 Protein sidechains [i](#)

In the following table, the Percentiles column shows the percent sidechain outliers of the chain as a percentile score with respect to all PDB entries followed by that with respect to all EM entries.

The Analysed column shows the number of residues for which the sidechain conformation was analysed, and the total number of residues.

Mol	Chain	Analysed	Rotameric	Outliers	Percentiles	
1	A	812/916 (89%)	806 (99%)	6 (1%)	84	91
2	B	193/475 (41%)	189 (98%)	4 (2%)	53	74
2	C	194/475 (41%)	193 (100%)	1 (0%)	88	94
All	All	1199/1866 (64%)	1188 (99%)	11 (1%)	79	88

All (11) residues with a non-rotameric sidechain are listed below:

Mol	Chain	Res	Type
1	A	444	LEU
1	A	594	TYR
1	A	612	LEU
1	A	691	ASP
1	A	906	PHE
1	A	1258	TRP
2	C	610	GLU
2	B	610	GLU
2	B	630	ARG
2	B	654	VAL
2	B	663	ARG

Sometimes sidechains can be flipped to improve hydrogen bonding and reduce clashes. All (24) such sidechains are listed below:

Mol	Chain	Res	Type
1	A	567	ASN
1	A	614	ASN
1	A	701	GLN
1	A	744	ASN
1	A	830	GLN
1	A	888	GLN
1	A	1092	ASN
1	A	1096	GLN
1	A	1143	ASN
1	A	1170	HIS
1	A	1336	GLN
1	A	1340	GLN
2	C	495	GLN
2	C	531	ASN
2	C	566	ASN
2	C	599	ASN
2	C	622	GLN
2	C	668	ASN

Continued on next page...

Continued from previous page...

Mol	Chain	Res	Type
2	C	678	GLN
2	C	690	ASN
2	C	736	GLN
2	B	521	GLN
2	B	622	GLN
2	B	690	ASN

5.3.3 RNA ⓘ

Mol	Chain	Analysed	Backbone Outliers	Pucker Outliers
3	D	76/105 (72%)	18 (23%)	0

All (18) RNA backbone outliers are listed below:

Mol	Chain	Res	Type
3	D	7	U
3	D	8	A
3	D	9	C
3	D	13	U
3	D	23	G
3	D	26	G
3	D	37	U
3	D	40	G
3	D	41	C
3	D	64	C
3	D	65	C
3	D	69	A
3	D	77	G
3	D	82	U
3	D	90	G
3	D	99	A
3	D	100	C
3	D	101	A

There are no RNA pucker outliers to report.

5.4 Non-standard residues in protein, DNA, RNA chains ⓘ

There are no non-standard protein/DNA/RNA residues in this entry.

5.5 Carbohydrates [i](#)

There are no monosaccharides in this entry.

5.6 Ligand geometry [i](#)

Of 3 ligands modelled in this entry, 3 are monoatomic - leaving 0 for Mogul analysis.

There are no bond length outliers.

There are no bond angle outliers.

There are no chirality outliers.

There are no torsion outliers.

There are no ring outliers.

No monomer is involved in short contacts.

5.7 Other polymers [i](#)

There are no such residues in this entry.

5.8 Polymer linkage issues [i](#)

There are no chain breaks in this entry.

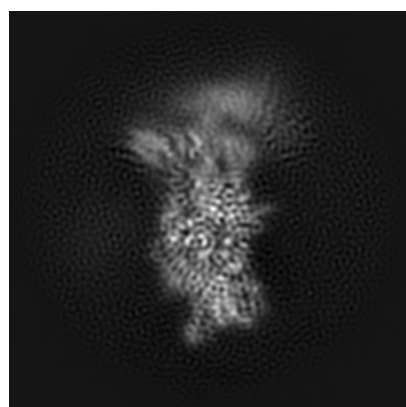
6 Map visualisation [i](#)

This section contains visualisations of the EMDB entry EMD-21051. These allow visual inspection of the internal detail of the map and identification of artifacts.

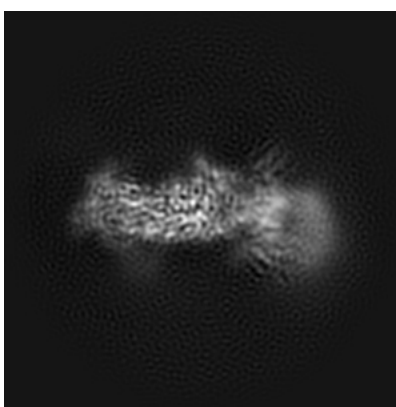
No raw map or half-maps were deposited for this entry and therefore no images, graphs, etc. pertaining to the raw map can be shown.

6.1 Orthogonal projections [i](#)

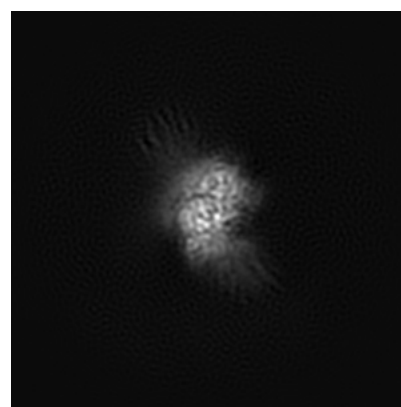
6.1.1 Primary map



X



Y

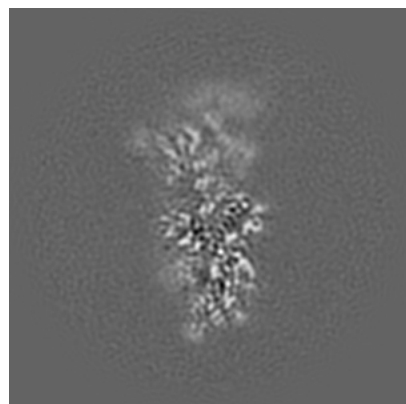


Z

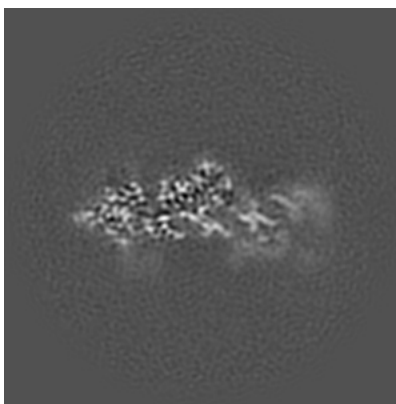
The images above show the map projected in three orthogonal directions.

6.2 Central slices [i](#)

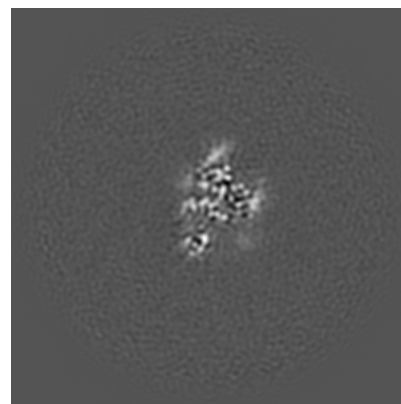
6.2.1 Primary map



X Index: 128



Y Index: 128

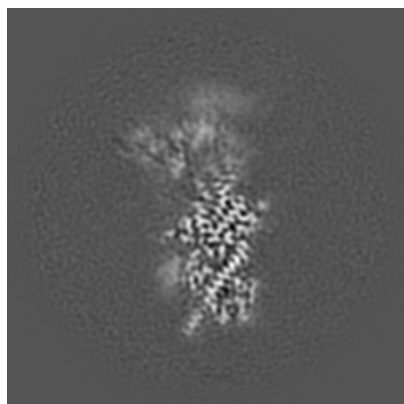


Z Index: 128

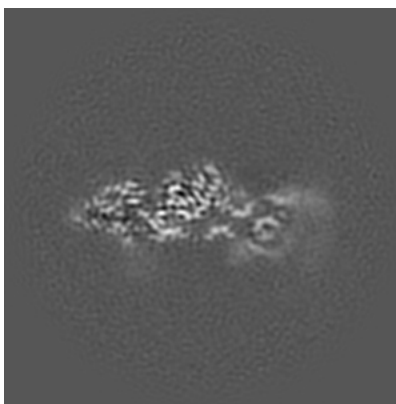
The images above show central slices of the map in three orthogonal directions.

6.3 Largest variance slices [i](#)

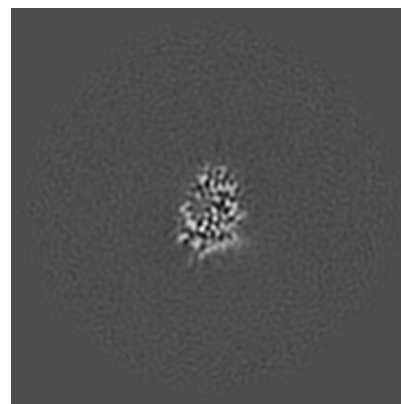
6.3.1 Primary map



X Index: 133



Y Index: 124



Z Index: 110

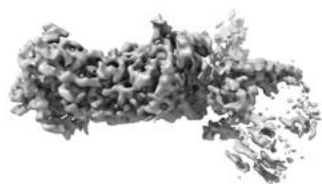
The images above show the largest variance slices of the map in three orthogonal directions.

6.4 Orthogonal surface views [i](#)

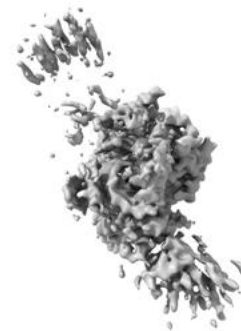
6.4.1 Primary map



X



Y



Z

The images above show the 3D surface view of the map at the recommended contour level 0.6. These images, in conjunction with the slice images, may facilitate assessment of whether an appropriate contour level has been provided.

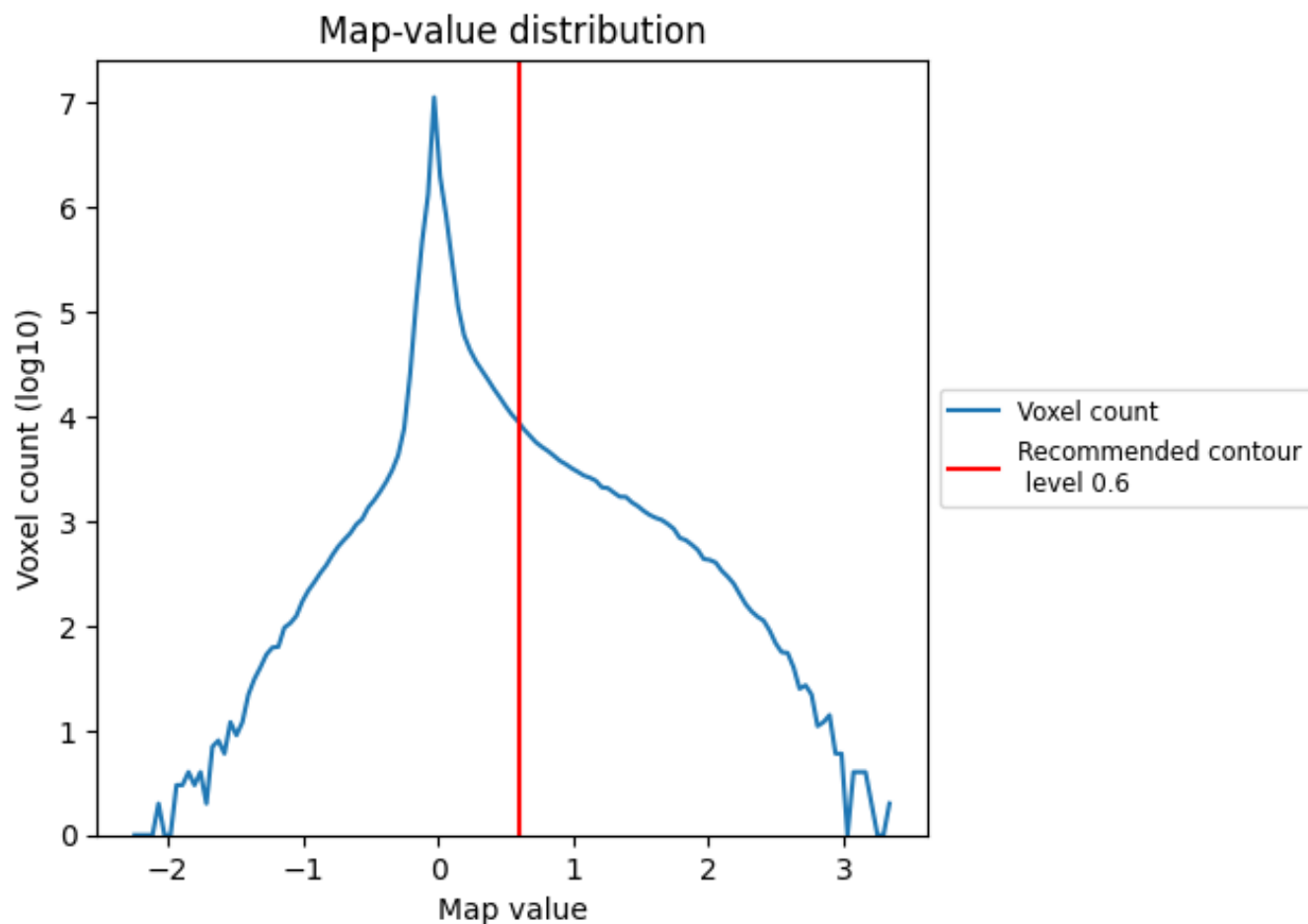
6.5 Mask visualisation

This section was not generated. No masks/segmentation were deposited.

7 Map analysis [i](#)

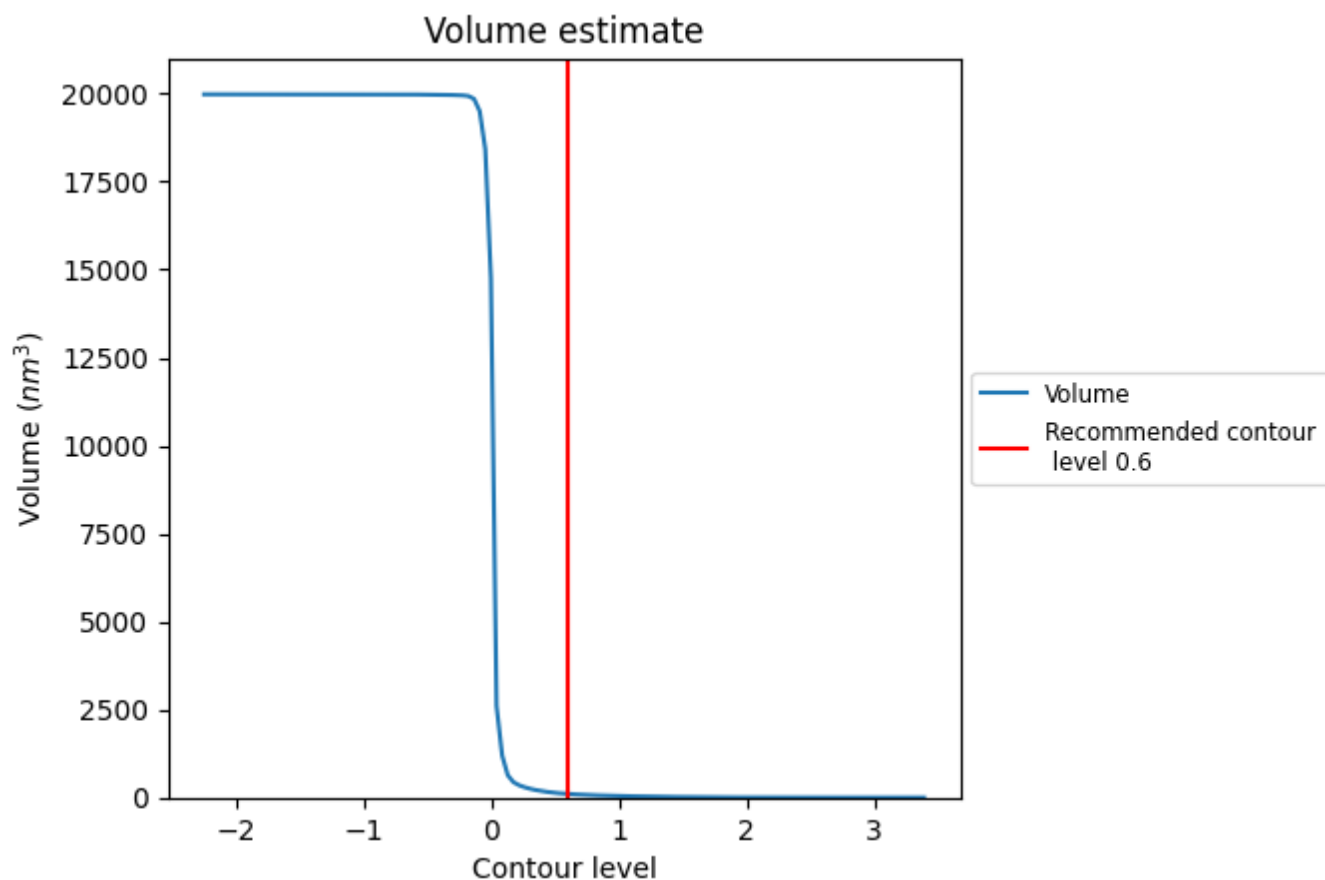
This section contains the results of statistical analysis of the map.

7.1 Map-value distribution [i](#)



The map-value distribution is plotted in 128 intervals along the x-axis. The y-axis is logarithmic. A spike in this graph at zero usually indicates that the volume has been masked.

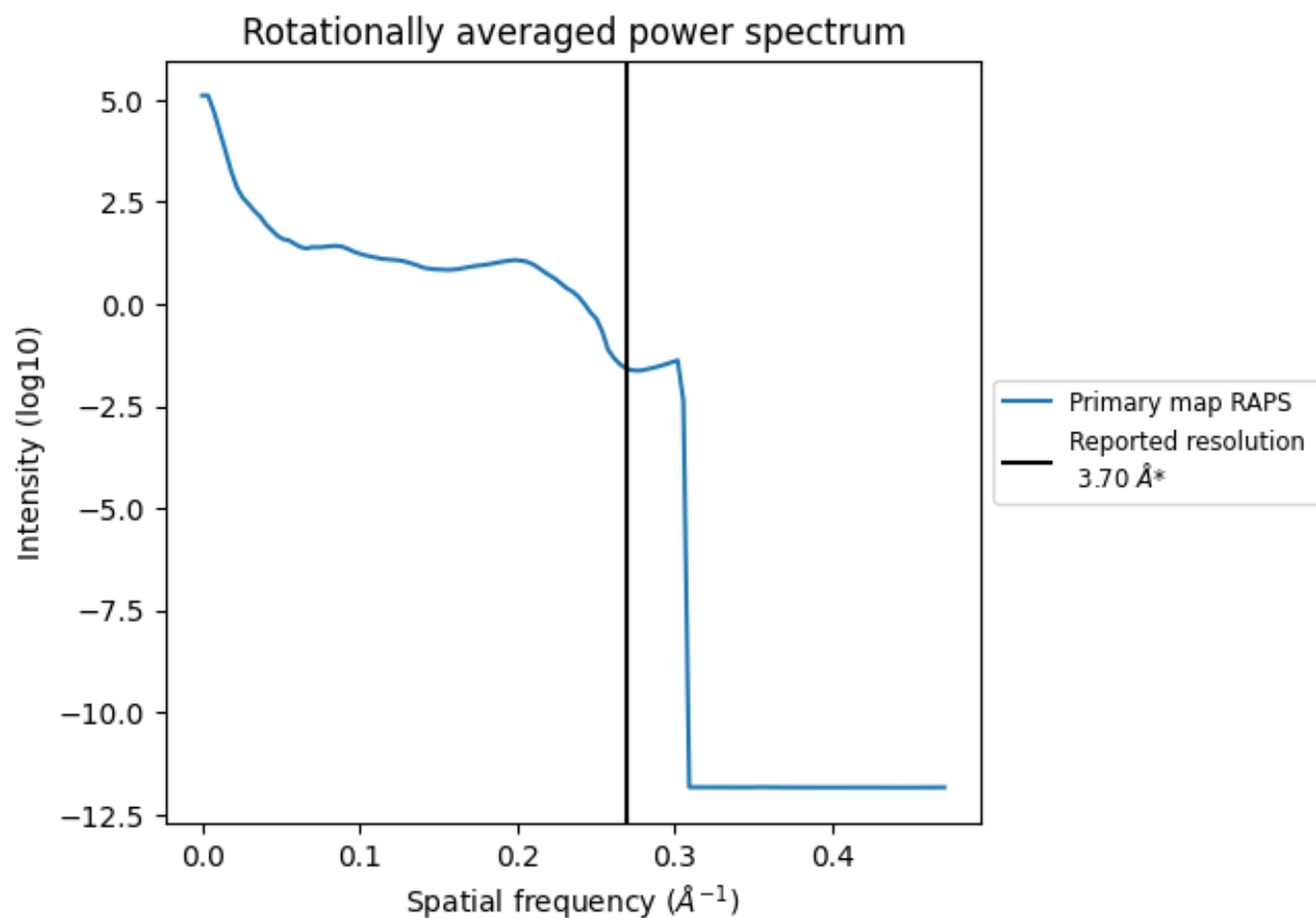
7.2 Volume estimate [i](#)



The volume at the recommended contour level is 103 nm³; this corresponds to an approximate mass of 93 kDa.

The volume estimate graph shows how the enclosed volume varies with the contour level. The recommended contour level is shown as a vertical line and the intersection between the line and the curve gives the volume of the enclosed surface at the given level.

7.3 Rotationally averaged power spectrum ⓘ



*Reported resolution corresponds to spatial frequency of 0.270 Å⁻¹

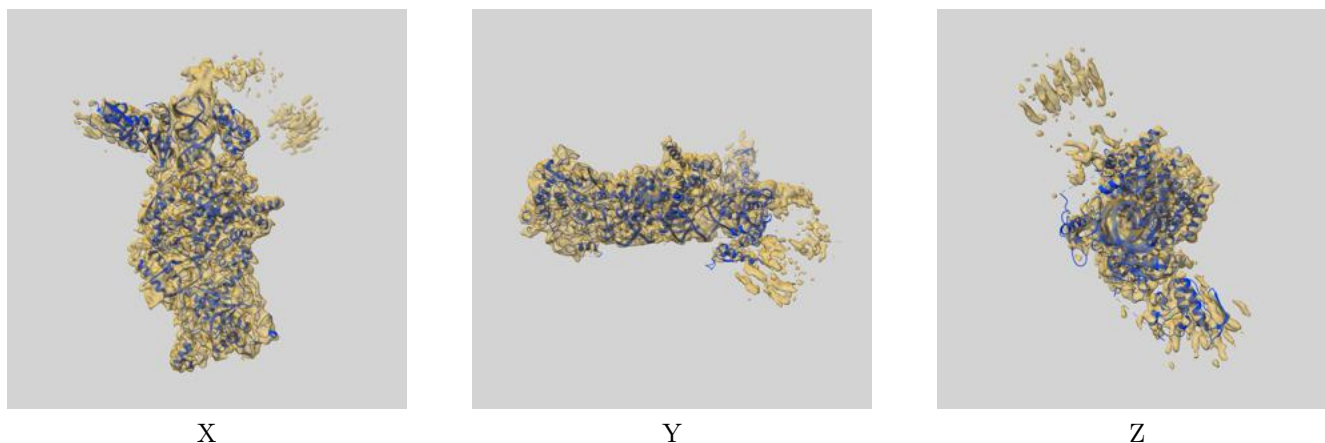
8 Fourier-Shell correlation ⓘ

This section was not generated. No FSC curve or half-maps provided.

9 Map-model fit [i](#)

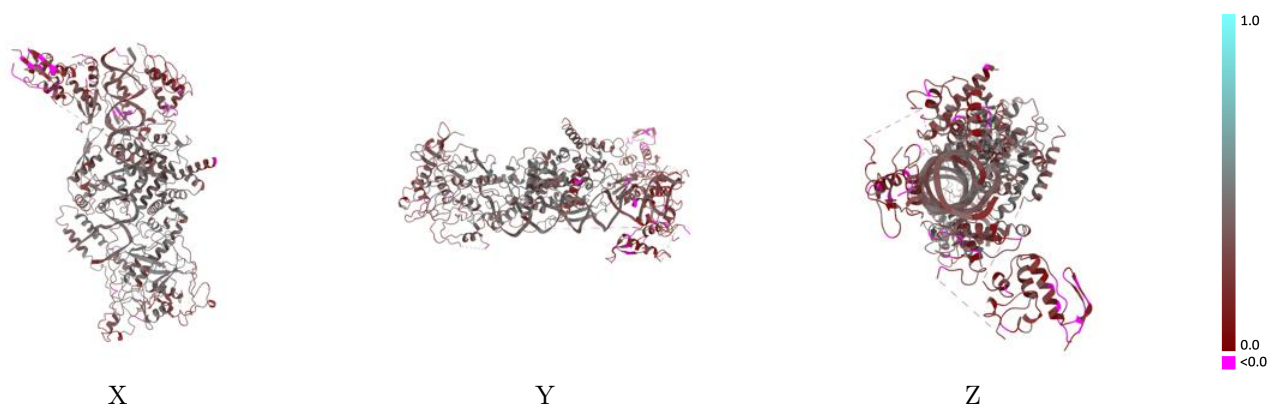
This section contains information regarding the fit between EMDB map EMD-21051 and PDB model 6V5B. Per-residue inclusion information can be found in section [3](#) on page [5](#).

9.1 Map-model overlay [i](#)



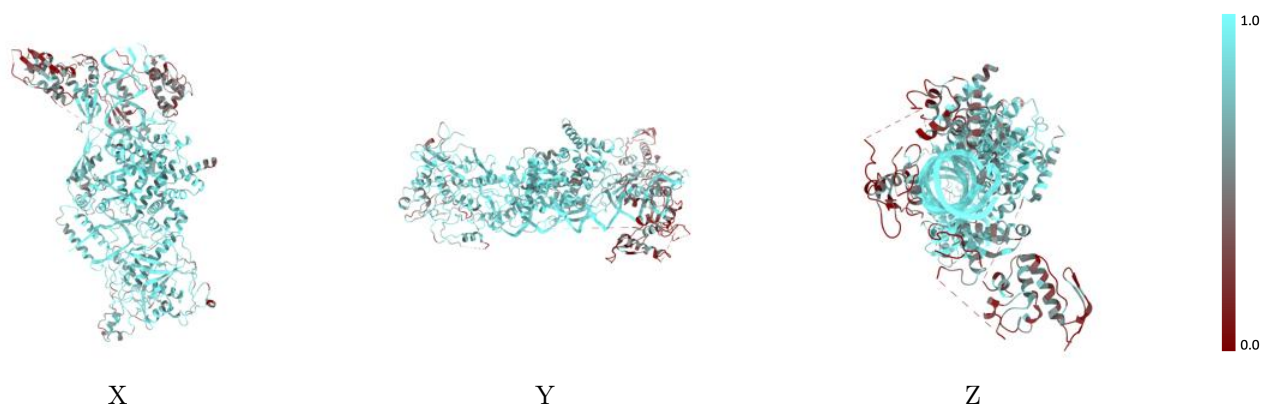
The images above show the 3D surface view of the map at the recommended contour level 0.6 at 50% transparency in yellow overlaid with a ribbon representation of the model coloured in blue. These images allow for the visual assessment of the quality of fit between the atomic model and the map.

9.2 Q-score mapped to coordinate model [i](#)



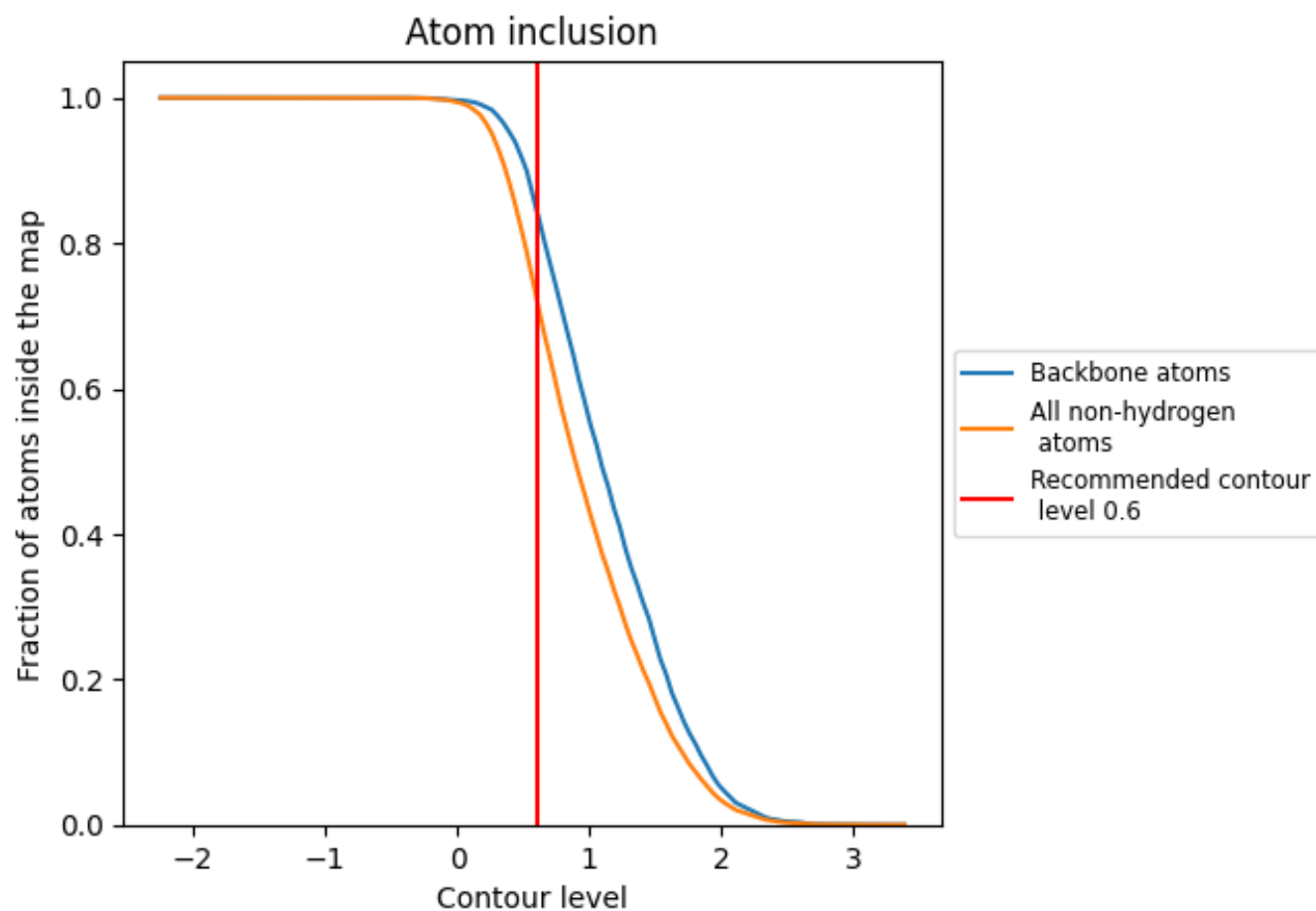
The images above show the model with each residue coloured according to its Q-score. This shows their resolvability in the map with higher Q-score values reflecting better resolvability. Please note: Q-score is calculating the resolvability of atoms, and thus high values are only expected at resolutions at which atoms can be resolved. Low Q-score values may therefore be expected for many entries.

9.3 Atom inclusion mapped to coordinate model [i](#)



The images above show the model with each residue coloured according to its atom inclusion. This shows to what extent they are inside the map at the recommended contour level (0.6).

9.4 Atom inclusion [i](#)



At the recommended contour level, 85% of all backbone atoms, 72% of all non-hydrogen atoms, are inside the map.

9.5 Map-model fit summary ⓘ

The table lists the average atom inclusion at the recommended contour level (0.6) and Q-score for the entire model and for each chain.

Chain	Atom inclusion	Q-score
All	<div></div> 0.7235	<div></div> 0.3370
A	<div></div> 0.8055	<div></div> 0.3870
B	<div></div> 0.4903	<div></div> 0.2190
C	<div></div> 0.3922	<div></div> 0.2100
D	<div></div> 0.9479	<div></div> 0.3750

